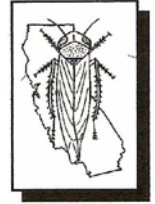


BEET CURLY TOP VIRUS GROWER ALERT



CURLY TOP VIRUS CONTROL PROGRAM

2895 N. Larkin, Suite A
Fresno, CA 93727
PHONE: (559) 294-2031
FAX: (559) 294-2037

May 4, 2016

Program-wide notice

- The Beet Curly Top Virus Control Program (BCTVCP) personnel noticed the hillside host plants have been revived from recent rainfall. Predominately filaree, but a lot of London rocket, some Russian thistle and *Plantago* are green and viable within previously treated fields. The cause for concern is that some BLH have remained in the hills and have produced another spring generation. When the host plants dry up, there could possibly be another migration of BLH to the valley floor.
- BLH counts were 3 adults and 7 nymphs per sweep in northern Fresno County. Surveys are still being conducted in previously treated areas, where there could be similar BLH counts.
- The Program is unable to spray the same hillsides again due to environmental restrictions. Continued monitoring of the hillside vegetation will be ongoing. As conditions change, the Program will send out additional alerts.
- The Program would also like to remind growers and PCA's that any fallow fields should be inspected for BLH prior to disking. If a BLH infestation is present, please use an insecticide first. The Program can be available for BLH surveys and, if needed, treatment of fallow fields where BLH counts reach the treatment threshold.