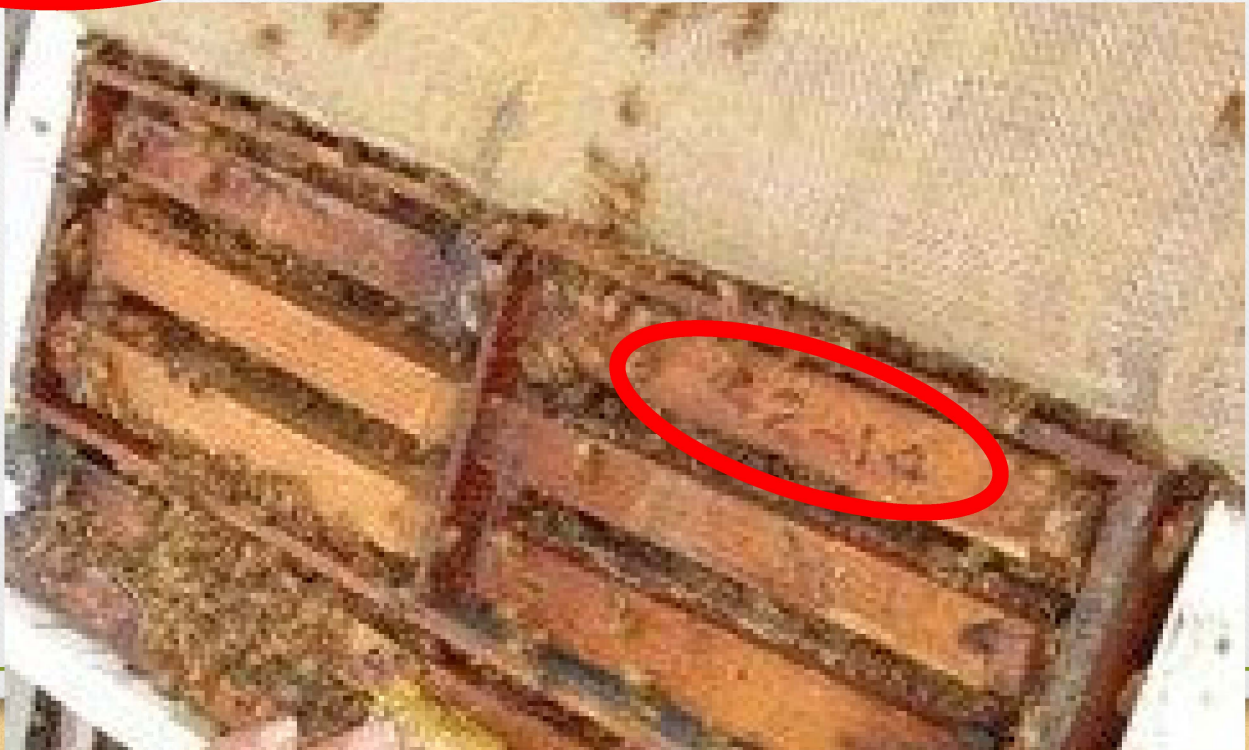


Apiary Brands

CDFA Apiary Protection
Program

September 19, 2023





Apiary Brand

- The Apiary Brand is optional/voluntary and is different than apiary markings
- The Apiary Brand is **in addition** to apiary markings

What is the Apiary Brand Program?

As provided in California Food and Agricultural Code [Sections 29049-29056](#), the owner of any apiary equipment may apply to the director for a serial number brand for use on apiary equipment which he or she owns. The application shall be accompanied by a fee, as established and periodically updated, by the director by regulation.

Beekeepers may obtain a transferable apiary brand number (fee \$25.00) by sending a completed [Apiary Brand Number Application](#) with the required fee to:

Cashier/Financial Services
California Department of Food and Agriculture
P.O. Box 942871
Sacramento, CA 94271-2871

This fee does **not** include the cost of the branding iron, which may be purchased directly from a manufacturer or obtained via transfer from the original owner.

What is the Apiary Brand Program? Continued

Brands may not be altered in any way. It is unlawful for any person to have apiary equipment branded with any serial number brand other than that which is registered and owned by them without a bill of sale.

Brand number and iron may be transferred (fee \$25) by submitting a [Bill of Sale](#) with the required fee to the address below. If the new owner already has a brand, they may have additional brand numbers transferred to their name without charge.

California Department of Food and Agriculture
Apiary Protection Program - IPC Branch
1220 N Street
Sacramento, CA 95814

Apiary registration forms, application forms for apiary brand numbers, and bill of sale forms are also available at [county agricultural commissioners' offices](#).

Apiary Brand List

- CDFA is working with CACASA to make this information available to County Agricultural Commissioners (CAC).
- If anyone has any questions about an apiary brand, please contact Jennifer Berger