

Agricultural Commodity Identification Aid Manual

Table of Contents

[Acknowledgements](#)

[Introduction](#)

[Index of Commodities by Name](#)

[Index of Commodities by Picture](#)

[References](#)

Acknowledgements

The following people have contributed to the production of this aid, both at the California Department of Food and Agriculture and the United States Department of Agriculture: Doug Barbe, Tad Bell, Naomi Britt, Jackie Chesi, Nick Condos, Suki Diaz, Jim Effenberger, Jeff Hillard, Sharon Ishikawa, Asif Maan, Dave Nelson, Ralph Percious, Sharlene Schaffer, Janamjeet Sohal, Trena Toney, Timothy Torbett, Steve Travis, Richard Wion, and the Plant Protection Officers of Los Angeles and San Francisco International Airports. The photographs in this aid are credited to Vince Arellano and Laurie Smith.

Introduction

As the growing demand for foreign or "exotic" agricultural commodities increases the risk of introducing unwanted pests, it concomitantly requires agricultural inspectors to make regulatory decisions on items not commonly seen in North America.

Thus, this pictorial index was created as an aid to assist inspectors with the identification of commodities not normally encountered in California. We stress the word "aid," as final determinations should be made by a qualified plant biologist or botanist.

Common names, scientific names, and descriptions were compiled from a list of references. Authorities cited to the scientific names were verified, where possible, through the United States Department of Agriculture's GRIN database. Descriptions are in the generic, as well as the pictures. Please be aware that varieties vary throughout the world. For example, there are hundreds of varieties of mangoes in the world; they vary in shape, size, and color. We have included a picture of a mango from Thailand. It might not look exactly like a mango from the Philippines. The same goes for eggplants, peppers, papayas, etc., from different sources and countries. We hope you get the picture (no pun intended). Origins, more appropriately common international origins, were compiled by personal interviews at California's international ports of entry.

We hope to periodically update this aid to include a range of commodities that may represent an increased risk of introducing new pests into California.

Agricultural Commodity Identification Aid Manual:

Commodities by Name Index

[A](#) | [B](#) | [C](#) | [D](#) | [E](#) | [F](#) | [G](#) | [H](#) | [I](#) | [J](#) | [K](#) | [L](#) | [M](#) | [N](#) | [O](#) | [P](#) | [Q](#) | [R](#) | [S](#) | [T](#) | [U](#) | [V](#) | [W](#) | [X](#) | [Y](#) | [Z](#)

A

- [Acalou](#)
- [Alemandro](#)
- [Ambarella](#)
- [American chestnut](#)
- [American ginseng](#)
- [Anacardium occidentale](#)
- [Annona](#)
- [Annona cherimola](#)
- [Annona muricata](#)
- [Annona reticulata](#)
- [Apple guava](#)
- [Apu](#)
- [Arbol de tomates](#)
- [Artocarpus heterophyllus](#)
- [Asian pear](#)
- [Aubergine](#)
- [Australian nut](#)
- [Averrhoa carambola](#)

[A](#) | [B](#) | [C](#) | [D](#) | [E](#) | [F](#) | [G](#) | [H](#) | [I](#) | [J](#) | [K](#) | [L](#) | [M](#) | [N](#) | [O](#) | [P](#) | [Q](#) | [R](#) | [S](#) | [T](#) | [U](#) | [V](#) | [W](#) | [X](#) | [Y](#) | [Z](#) | [Back to Top](#)

B

- [Badea](#)
- [Badinjan](#)
- [Balsam pear](#)
- [Bamboo](#)
- [Banana](#)
- [Barbadine](#)
- [Barley](#)
- [Bedara](#)
- [Belimbing manis](#)
- [Ber](#)
- [Beri](#)
- [Bidara](#)
- [Bitter cucumber](#)
- [Bitter gourd](#)
- [Bitter melon](#)
- [Brassica rapa](#)
- [Bread wheat](#)

- [Brinjal](#)
 - [Bullock's heart](#)
-

[A](#) | [B](#) | [C](#) | [D](#) | [E](#) | [F](#) | [G](#) | [H](#) | [I](#) | [J](#) | [K](#) | [L](#) | [M](#) | [N](#) | [O](#) | [P](#) | [Q](#) | [R](#) | [S](#) | [T](#) | [U](#) | [V](#) | [W](#) | [X](#) | [Y](#) | [Z](#) | [Back to Top](#)

C

- [Cafe](#)
 - [Caja mirim](#)
 - [Cajiul](#)
 - [Caju](#)
 - [Cajuguha](#)
 - [Cape-jasmine](#)
 - [Capsicum frutescens](#)
 - [Caramba](#)
 - [Carambola](#)
 - [Carica papaya](#)
 - [Cashew](#)
 - [Cashew apple](#)
 - [Cashew nut](#)
 - [Castenea crenata](#)
 - [Castenea dentata](#)
 - [Castenea sativa](#)
 - [Cayenne pepper](#)
 - [Ceku](#)
 - [Celery cabbage](#)
 - [Chayote](#)
 - [Cherimalla](#)
 - [Cherimola](#)
 - [Cherimoya](#)
 - [Cherimuyu](#)
 - [Chestnut](#)
 - [Chicle](#)
 - [Chico](#)
 - [Chico-sapote](#)
 - [Chico zapote](#)
 - [Chiku](#)
 - [Chili pepper](#)
 - [Chinese cabbage](#)
 - [Chinese date](#)
 - [Chinese ginseng](#)
 - [Chinese jujube](#)
 - [Chinese pear](#)
-

[Back to Top](#)

- [Chinese pepper](#)
- [Chirimolia](#)
- [Chirimoya](#)

- [Cho-cho](#)
- [Chouchou](#)
- [Choyote](#)
- [Christophine](#)
- [*Chrysophyllum oliviforme*](#)
- [Chuchu](#)
- [Circuela](#)
- [*Citrofortunela sp.*](#)
- [Citrus peel](#)
- [*Citrus sp.*](#)
- [*Citrus Hystrix, fruit*](#)
- [*Citrus Hystrix, leaf*](#)
- [*Citrus maxima*](#)
- [Cobnut](#)
- [Coco palm](#)
- [*Cocos nucifera*](#)
- [Coconut](#)
- [Coconut palm](#)
- [Cocotero](#)
- [*Coffea arabica*](#)
- [Coffee](#)
- [Coffee berries](#)
- [Common guava](#)
- [*Corylus avellana*](#)
- [Country gooseberry](#)
- [*Cucumis melo*](#)
- [*Curcuma domestica*](#)
- [Custard apple](#)
- [*Cymbopogon citratus*](#)
- [*Cyphmandra betacea*](#)

[A](#) | [B](#) | [C](#) | [D](#) | [E](#) | [F](#) | [G](#) | [H](#) | [I](#) | [J](#) | [K](#) | [L](#) | [M](#) | [N](#) | [O](#) | [P](#) | [Q](#) | [R](#) | [S](#) | [T](#) | [U](#) | [V](#) | [W](#) | [X](#) | [Y](#) | [Z](#) | [Back to Top](#)

D

- [Damson plum](#)
- [Djeruk purut](#)
- [Dragon's eye](#)
- [Durian](#)
- [*Durio zibethinus*](#)

[A](#) | [B](#) | [C](#) | [D](#) | [E](#) | [F](#) | [G](#) | [H](#) | [I](#) | [J](#) | [K](#) | [L](#) | [M](#) | [N](#) | [O](#) | [P](#) | [Q](#) | [R](#) | [S](#) | [T](#) | [U](#) | [V](#) | [W](#) | [X](#) | [Y](#) | [Z](#) | [Back to Top](#)

E

- [Eggplant](#)
- [*Euphoria Longan*](#)
- [European filbert](#)
- [European chestnut](#)

[A](#) | [B](#) | [C](#) | [D](#) | [E](#) | [F](#) | [G](#) | [H](#) | [I](#) | [J](#) | [K](#) | [L](#) | [M](#) | [N](#) | [O](#) | [P](#) | [Q](#) | [R](#) | [S](#) | [T](#) | [U](#) | [V](#) | [W](#) | [X](#) | [Y](#) | [Z](#) | [Back to Top](#)

F

- [Fever grass](#)
 - [Filbert](#)
 - [Five corner](#)
 - [Foo gwa](#)
 - [French jujube](#)
-

[A](#) | [B](#) | [C](#) | [D](#) | [E](#) | [F](#) | [G](#) | [H](#) | [I](#) | [J](#) | [K](#) | [L](#) | [M](#) | [N](#) | [O](#) | [P](#) | [Q](#) | [R](#) | [S](#) | [T](#) | [U](#) | [V](#) | [W](#) | [X](#) | [Y](#) | [Z](#) | [Back to Top](#)

G

- [Gajas](#)
 - [Garcinia mangostana](#)
 - [Gardenia](#)
 - [Gardenia jasminoides](#)
 - [Genip](#)
 - [Genipa](#)
 - [Genipe](#)
 - [Giant granadila](#)
 - [Ginger](#)
 - [Ginger root](#)
 - [Ginseng](#)
 - [Goiaba](#)
 - [Golden apple](#)
 - [Goyave](#)
 - [Goyavier](#)
 - [Guajava](#)
 - [Guanabana](#)
 - [Guava](#)
 - [Guava](#)
 - [Guayaba](#)
 - [Guyabe](#)
-

[A](#) | [B](#) | [C](#) | [D](#) | [E](#) | [F](#) | [G](#) | [H](#) | [I](#) | [J](#) | [K](#) | [L](#) | [M](#) | [N](#) | [O](#) | [P](#) | [Q](#) | [R](#) | [S](#) | [T](#) | [U](#) | [V](#) | [W](#) | [X](#) | [Y](#) | [Z](#) | [Back to Top](#)

H

- [Hazelnut](#)
 - [Hog plum](#)
 - [Honey flower](#)
 - [Honey protea](#)
 - [Honeyberry](#)
 - [Hordeum vulgare](#)
 - [Huachiao](#)
 - [Hylocereus polyrhizus](#)
 - [Hylocereus undulatus](#)
-

[A](#) | [B](#) | [C](#) | [D](#) | [E](#) | [F](#) | [G](#) | [H](#) | [I](#) | [J](#) | [K](#) | [L](#) | [M](#) | [N](#) | [O](#) | [P](#) | [Q](#) | [R](#) | [S](#) | [T](#) | [U](#) | [V](#) | [W](#) | [X](#) | [Y](#) | [Z](#) | [Back to Top](#)

I

- [Ichang lime](#)
 - [Ilantai](#)
 - [Indian jujube](#)
 - [Indian saffron](#)
-

[A](#) | [B](#) | [C](#) | [D](#) | [E](#) | [F](#) | [G](#) | [H](#) | [I](#) | [J](#) | [K](#) | [L](#) | [M](#) | [N](#) | [O](#) | [P](#) | [Q](#) | [R](#) | [S](#) | [T](#) | [U](#) | [V](#) | [W](#) | [X](#) | [Y](#) | [Z](#) | [Back to Top](#)

J

- [Jack](#)
 - [Jackfruit](#)
 - [Jakfruit](#)
 - [Jambu merah](#)
 - [Japan pepper](#)
 - [Japanese chestnut](#)
 - [Japanese pear](#)
 - [Jarilla](#)
 - [Jarilla caudata](#)
 - [Jew plum](#)
 - [Jew's apple](#)
 - [Jobo](#)
 - [Jujube](#)
-

[A](#) | [B](#) | [C](#) | [D](#) | [E](#) | [F](#) | [G](#) | [H](#) | [I](#) | [J](#) | [K](#) | [L](#) | [M](#) | [N](#) | [O](#) | [P](#) | [Q](#) | [R](#) | [S](#) | [T](#) | [U](#) | [V](#) | [W](#) | [X](#) | [Y](#) | [Z](#) | [Back to Top](#)

K

- [Kaffir lime](#)
 - [Kaffir lime leaves](#)
 - [Kamaranga](#)
 - [Kankole](#)
 - [Kap-pe](#)
 - [Karela](#)
 - [Kechapi](#)
 - [Ketrikai](#)
 - [King protea](#)
 - [Kopai](#)
 - [Kopi](#)
-

[A](#) | [B](#) | [C](#) | [D](#) | [E](#) | [F](#) | [G](#) | [H](#) | [I](#) | [J](#) | [K](#) | [L](#) | [M](#) | [N](#) | [O](#) | [P](#) | [Q](#) | [R](#) | [S](#) | [T](#) | [U](#) | [V](#) | [W](#) | [X](#) | [Y](#) | [Z](#) | [Back to Top](#)

L

- [La-Kwa](#)
- [Langsat](#)

- [Lansek](#)
- [Lansium domesticum](#)
- [Lanson](#)
- [Lanzon](#)
- [Lanzone](#)
- [Leechee](#)
- [Lemon grass](#)
- [Lemon guava](#)
- [Lichi](#)
- [Limoncillo](#)
- [Litchi](#)
- [Litchi chinensis](#)
- [Longan](#)
- [Longyen](#)
- [Lungan](#)
- [Lychee](#)

[A](#) | [B](#) | [C](#) | [D](#) | [E](#) | [F](#) | [G](#) | [H](#) | [I](#) | [J](#) | [K](#) | [L](#) | [M](#) | [N](#) | [O](#) | [P](#) | [Q](#) | [R](#) | [S](#) | [T](#) | [U](#) | [V](#) | [W](#) | [X](#) | [Y](#) | [Z](#) | [Back to Top](#)

M

- [Ma muang himma phan](#)
- [Ma-tan](#)
- [Ma-fu'ang](#)
- [Macadamia integrifolia](#)
- [Macadamia nut](#)
- [Mad apple](#)
- [Makrut](#)
- [Malay apple](#)
- [Malay rose apple](#)
- [Mamey colorado](#)
- [Mamey sapote](#)
- [Mammee](#)
- [Mamoncillo](#)
- [Manga](#)
- [Mangga](#)
- [Mangifera indica](#)
- [Mango](#)
- [Mangosteen](#)
- [Mangue](#)
- [Manilkara zapota](#)
- [Maracuja grande](#)
- [Maracuja manao](#)
- [Maracuja acu](#)
- [Maranon](#)
- [Marapa](#)
- [Markesa](#)
- [Marmalade fruit](#)
- [Marmalade plum](#)
- [Masan](#)
- [Melicoccus bijugatus](#)
- [Melon](#)

- [Melon poire](#)
- [Melon pear](#)
- [Melon tree](#)
- [Melongene](#)
- [Merey](#)
- [Mirliton](#)
- [Mombin jaune](#)
- [Momordica charantia](#)
- [Mountain apple](#)
- [Mundri maram](#)
- [Musa X paradisiaca](#)
- [Myrobalan](#)

[A](#) | [B](#) | [C](#) | [D](#) | [E](#) | [F](#) | [G](#) | [H](#) | [I](#) | [J](#) | [K](#) | [L](#) | [M](#) | [N](#) | [O](#) | [P](#) | [Q](#) | [R](#) | [S](#) | [T](#) | [U](#) | [V](#) | [W](#) | [X](#) | [Y](#) | [Z](#) | [Back to Top](#)

N

- [Nanqka](#)
- [Naseberry](#)
- [Nectarine](#)
- [Nephelium lappaceum](#)
- [Nispero](#)

[A](#) | [B](#) | [C](#) | [D](#) | [E](#) | [F](#) | [G](#) | [H](#) | [I](#) | [J](#) | [K](#) | [L](#) | [M](#) | [N](#) | [O](#) | [P](#) | [Q](#) | [R](#) | [S](#) | [T](#) | [U](#) | [V](#) | [W](#) | [X](#) | [Y](#) | [Z](#) | [Back to Top](#)

O

- [Olive plum](#)
- [Organ pipe cactus](#)
- [Oriental pear](#)
- [Oryza rufipogon](#)
- [Otaheite apple](#)

[A](#) | [B](#) | [C](#) | [D](#) | [E](#) | [F](#) | [G](#) | [H](#) | [I](#) | [J](#) | [K](#) | [L](#) | [M](#) | [N](#) | [O](#) | [P](#) | [Q](#) | [R](#) | [S](#) | [T](#) | [U](#) | [V](#) | [W](#) | [X](#) | [Y](#) | [Z](#) | [Back to Top](#)

P

- [Palo de tomate](#)
- [Panax ginseng](#)
- [Panax japonica](#)
- [Panax psuedoginseng](#)
- [Panax quinquefolius](#)
- [Papaya](#)
- [Papeta](#)
- [Pappali](#)
- [Pasionne](#)
- [Passiflora quadrangularis](#)
- [Pawpaw](#)
- [Pe-Tsai](#)
- [Peach](#)

- [Pear guava](#)
- [Pear guava](#)
- [Pepino](#)
- [Pepino dulce](#)
- [Phyllostachys vivax](#)
- [Piment](#)
- [Pimento](#)
- [Pineapple](#)
- [Pipenella](#)
- [Pitahaya](#)
- [Pitajaya](#)
- [Pitaya](#)
- [Plantain](#)
- [Pomegranate](#)
- [Pomelo](#)
- [Pomerac jambos](#)
- [Pommelo](#)
- [Pompelmous](#)
- [Potato](#)
- [Pouteria sapota](#)
- [Prickly custard apple](#)
- [Protea](#)
- [Protea cyanroides](#)
- [Protea mellifera](#)
- [Protea repens](#)
- [Prunus persica](#)
- [Psidium guajava](#)
- [Pummelo](#)
- [Punica granatum](#)
- [Pyrus pyrifolia](#)

[A](#) | [B](#) | [C](#) | [D](#) | [E](#) | [F](#) | [G](#) | [H](#) | [I](#) | [J](#) | [K](#) | [L](#) | [M](#) | [N](#) | [O](#) | [P](#) | [Q](#) | [R](#) | [S](#) | [T](#) | [U](#) | [V](#) | [W](#) | [X](#) | [Y](#) | [Z](#) | [Back to Top](#)

Q

- [Queensland nut](#)

[A](#) | [B](#) | [C](#) | [D](#) | [E](#) | [F](#) | [G](#) | [H](#) | [I](#) | [J](#) | [K](#) | [L](#) | [M](#) | [N](#) | [O](#) | [P](#) | [Q](#) | [R](#) | [S](#) | [T](#) | [U](#) | [V](#) | [W](#) | [X](#) | [Y](#) | [Z](#) | [Back to Top](#)

R

- [Rambutan](#)
- [Rampostan](#)
- [Rata-puhul](#)
- [Red rice](#)

[A](#) | [B](#) | [C](#) | [D](#) | [E](#) | [F](#) | [G](#) | [H](#) | [I](#) | [J](#) | [K](#) | [L](#) | [M](#) | [N](#) | [O](#) | [P](#) | [Q](#) | [R](#) | [S](#) | [T](#) | [U](#) | [V](#) | [W](#) | [X](#) | [Y](#) | [Z](#) | [Back to Top](#)

S

- [Saccharum officinarum](#)
- [Saccharum spontaneum](#)
- [Salacca edulis](#)
- [Salak](#)
- [San-ch'i](#)
- [Sand pear](#)
- [Sandoricum koetjape](#)
- [Santol](#)
- [Sapodilla](#)
- [Sapota](#)
- [Sapote](#)
- [Sapoti](#)
- [Satin leaf](#)
- [Sawo](#)
- [Sechium edule](#)
- [Sentul](#)
- [Shaddock](#)
- [Singapore almond](#)
- [Snakefruit](#)
- [Solanum melongena](#)
- [Solanum muricatum](#)
- [Solanum tuberosum](#)
- [Soursop](#)
- [Spanish lime](#)
- [Spanish plum](#)
- [Spondias dulcis](#)
- [Spondias mombin](#)
- [Spud](#)
- [Starfruit](#)
- [Strawberry pear](#)
- [Su-khata rot](#)
- [Sugar bush](#)
- [Sugarcane](#)
- [Sweet sop](#)
- [Sweet cucumber](#)
- [Syzygium malaccensis](#)
- [Szechuan pepper](#)

[A](#) | [B](#) | [C](#) | [D](#) | [E](#) | [F](#) | [G](#) | [H](#) | [I](#) | [J](#) | [K](#) | [L](#) | [M](#) | [N](#) | [O](#) | [P](#) | [Q](#) | [R](#) | [S](#) | [T](#) | [U](#) | [V](#) | [W](#) | [X](#) | [Y](#) | [Z](#) | [Back to Top](#)

T

- [Tabasco pepper](#)
- [Tabasco sauce pepper](#)
- [Tahiti mombin](#)
- [Tamarta](#)
- [Tapanima](#)
- [Taperiba](#)
- [Teli huhu'](#)
- [Terminalia catappa](#)
- [Terung](#)
- [Timon belanda](#)

- [Tochiba-ninjin](#)
- [Tomate d'arbe](#)
- [Tomate Frances](#)
- [Tree tomato](#)
- [Triticum sp.](#)
- [Tropical almond](#)
- [Tsao](#)
- [Tuber](#)
- [Turmeric](#)

[A](#) | [B](#) | [C](#) | [D](#) | [E](#) | [F](#) | [G](#) | [H](#) | [I](#) | [J](#) | [K](#) | [L](#) | [M](#) | [N](#) | [O](#) | [P](#) | [Q](#) | [R](#) | [S](#) | [T](#) | [U](#) | [V](#) | [W](#) | [X](#) | [Y](#) | [Z](#) | [Back to Top](#)

U

[A](#) | [B](#) | [C](#) | [D](#) | [E](#) | [F](#) | [G](#) | [H](#) | [I](#) | [J](#) | [K](#) | [L](#) | [M](#) | [N](#) | [O](#) | [P](#) | [Q](#) | [R](#) | [S](#) | [T](#) | [U](#) | [V](#) | [W](#) | [X](#) | [Y](#) | [Z](#) | [Back to Top](#)

V

- [Vegetable pear](#)

[A](#) | [B](#) | [C](#) | [D](#) | [E](#) | [F](#) | [G](#) | [H](#) | [I](#) | [J](#) | [K](#) | [L](#) | [M](#) | [N](#) | [O](#) | [P](#) | [Q](#) | [R](#) | [S](#) | [T](#) | [U](#) | [V](#) | [W](#) | [X](#) | [Y](#) | [Z](#) | [Back to Top](#)

W

- [Wambotu](#)
- [Wheat](#)
- [Wi tree](#)
- [Wild lime](#)

[A](#) | [B](#) | [C](#) | [D](#) | [E](#) | [F](#) | [G](#) | [H](#) | [I](#) | [J](#) | [K](#) | [L](#) | [M](#) | [N](#) | [O](#) | [P](#) | [Q](#) | [R](#) | [S](#) | [T](#) | [U](#) | [V](#) | [W](#) | [X](#) | [Y](#) | [Z](#) | [Back to Top](#)

X

[A](#) | [B](#) | [C](#) | [D](#) | [E](#) | [F](#) | [G](#) | [H](#) | [I](#) | [J](#) | [K](#) | [L](#) | [M](#) | [N](#) | [O](#) | [P](#) | [Q](#) | [R](#) | [S](#) | [T](#) | [U](#) | [V](#) | [W](#) | [X](#) | [Y](#) | [Z](#) | [Back to Top](#)

Y

- [Yautia](#)
- [Yellow guava](#)
- [Yellow guava](#)
- [Yellow mombin](#)

[A](#) | [B](#) | [C](#) | [D](#) | [E](#) | [F](#) | [G](#) | [H](#) | [I](#) | [J](#) | [K](#) | [L](#) | [M](#) | [N](#) | [O](#) | [P](#) | [Q](#) | [R](#) | [S](#) | [T](#) | [U](#) | [V](#) | [W](#) | [X](#) | [Y](#) | [Z](#) | [Back to Top](#)

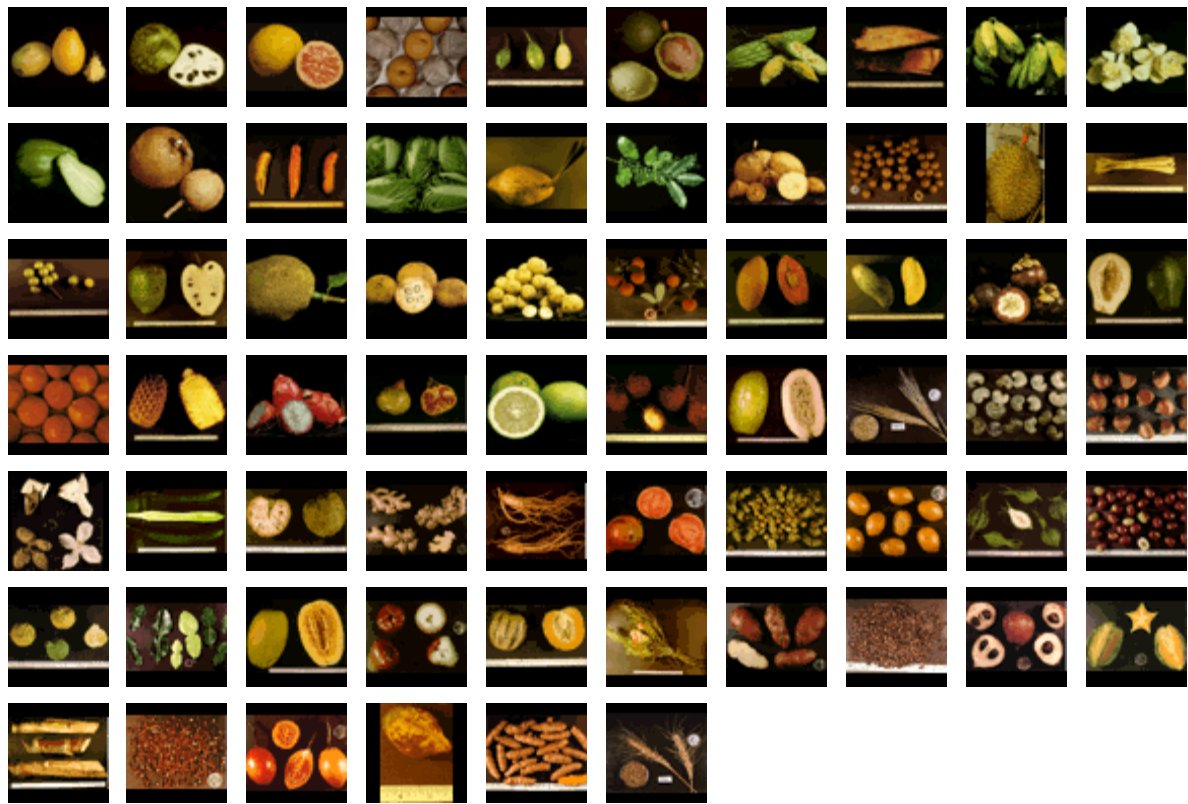
Z

- [*Zanthoxylum ailanthoides*](#)
 - [*Zanthoxylum fagara*](#)
 - [*Zanthoxylum pepertium*](#)
 - [*Zanthoxylum simulans*](#)
 - [*Zapota*](#)
 - [*Zingiber officinal*](#)
 - [*Ziziphus jujuba*](#)
 - [*Ziziphus mauritiana*](#)
-

[**Back to Agricultural ID Aid Manual**](#)

Agricultural Commodity Identification Aid Manual:

Commodities by Picture Index



[Back to Manual](#)

***Spondias dulcis* Sol. ex Parkinson.**



Common Names

Ambarella, Golden apple, Jew plum, Otaheite apple, Tahiti mombin, Wi tree

Description

Green or orange-yellow with brown spots, soft and fibrous white or yellowish flesh, ovoid, 1-5 large spiny leathery seeds, 2-4 inches long.

Origin

Asia, Cambodia, China, Hong Kong, Laos, Philippines, Vietnam

Comments

Host for fruit flies (including *Anastrepha* spp., *Bactrocera* spp., & *Ceratitis* spp.).

[Return to Manual](#)

Annona cherimola Miller



Common Names

Annona, Cerimalla, Cherimola, Cherimoya, Cherimuyu, Chirimolia, Chirimoya

Description

Pale-green with black spotting, cream flesh, soft skin covered in small oblong scale-like overlapping lobes, round or heart shaped, usually smooth, large seeds, up to 5 inches long.

Origin

El Salvador, Malaysia, Mexico, Philippines, Vietnam

Comments

Host for fruit flies (including *Anastrepha* spp. & *Ceratitis* spp.), moths (Tortricidae, Gelechiidae), scale and mealybugs.

[Return to the Agricultural ID Aid Manual](#)

Psidium guajava L.



Common Names

Apple guava, Guajava, Guava, Lemon guava, Pear guava, Yellow guava

Description

Greenish-white or yellow or brown skin, apple-like or pear-shaped, yellow, white, or pink flesh, pitted, 1-6 inches long, many small hard white seeds.

Origin

World-wide

Comments

Host for fruit flies (including *Anastrepha* spp., *Bactrocera* spp., & *Ceratitis* spp.), mealybugs, scale, beetles (Curculionidae), and moths (Pylalidae, Tortricidae).

[Return to the Agricultural ID Aid Manual](#)

Pyrus pyrifolia (Burm. f.) Nakai



Common Names

Asia pear, Chinese pear, Japanese pear, Oriental pear, Sand pear

Description

Brown, apple-shaped, very hard.

Origin

Japan, Korea, Taiwan

Comments

Host for species of fruit flies, moths (Tortricidae), and mealybugs.

[Return to the Agricultural ID Aid Manual](#)

Solanum melongena L.



Common Names

Aubergine, Badinjan, Brinjal, Eggplant, Jew's apple, Ketrikai, Mad apple, Melongene, Terung, Wambotu

Description

Green-yellow to purple-black, up to 6 inches long, angled, round, teardrop, or lobed.

Origin

Egypt, Ghana, Iran, Israel, Jordan, Nigeria, South America, Syria, Thailand, Vietnam

Comments

Host for fruit flies (including *Bactrocera* spp. & *Ceratitis capitata*), beetles (Curculionidae), moths (Gelechiidae, Pyralidae, Tortricidae), and scales.

[Return to the Agricultural ID Aid Manual](#)

***Macadamia integrifolia* Maiden & Betche**



Common Names

Australian nut, Macadamia nut, Queensland nut

Description

Nut with very hard shell, 1/2 inch to 1 inch diameter, glossy smooth husk.

Origin

Australia

Comments

Host for beetles (Anthribidae) and moths (Tortricidae).

[Return to the Agricultural ID Aid Manual](#)

***Momordica* L.**



Common Names

Balsam pear, Bitter cucumber, Bitter gourd, Bitter melon, Foo gwa, Karela, La-kwa

Description

Green, oblong, warty skin, 1-8 inches long, red arils, fibrous, seeds.

Origin

China, Hong Kong, Philippines, Taiwan

Comments

Host for fruit flies (including *Anastrepha suspensa*, *Bactrocera* spp., *Dacus* spp.), scale, and moths (Pylalidae).

[Return to the Agricultural ID Aid Manual](#)

Phyllostachys vivax McClure



Common Name

Bamboo

Description

Green internodes, strongly ribbed, creamy-buff sheaths, spotted brown, pendulous leaves, up to 8 inch long blades and 3/4 inch wide.

Origin

China, Taiwan, Vietnam

Comments

Host for species of mealybug and scale.

[Return to the Agricultural ID Aid Manual](#)

Musa X paradisiaca L.



Common Names

Banana, plantain

Description

Green or yellow-green, long with slight curve, lots of brown scars on skin.

Origin

Central America

Comments

Host for fruit flies (including *Bactrocera* spp.), thrips, scales, moths (Pyrilidae), and beetles (Curculionidae, Elateridae).

[Return to the Agricultural ID Aid Manual](#)

Gardenia jasminoides Ellis



Common Names

Cape-jasmine, Gardenia

Description

White corolla, up to 3 inches long.

Origin

China, Subtropics

Comments

Host for species of thrips, scale, aphids, and mealybugs.

[Return to Manual](#)

Sechium edule (Jacq.) Sw.



Common Names

Chayote, Cho-cho, Chouchou, Choyote, Chuchu, Christophine, Mirliton, Pipenella,
Vegetable pear

Description

Yellow-green or white, pear-shaped, wrinkled scabby skin, apex puckered over seed,
greenish- white flesh, 3-4 inches long.

Origin

Costa Rica, El Salvador, Guatemala, Mexico

Comments

Host for fruit flies (including *Bactrocera cucurbitae* & *Dacus* spp.), mealybugs, and moths
(Pyrilidae, Tortricidae, Gelechiidae).

[Return to the Agricultural ID Aid Manual](#)

***Manilkara zapota* (L.) P. Royen**



Common Names

Ceku, Chicle, Chico, Chico-sapote, Chico zapote, Chiku, Naseberry, Nispero, Sapodilla, Sapoti, Sawo

Description

Grayish-rusty-brown or orange, yellow-red-brown flesh, oval, thin but rough skin, 10-12 large black shiny seeds, 2-4 inch diameter.

Origin

Central America, Mexico, Philippines

Comments

Host for fruit flies (including *Anastrepha* spp., *Bactrocera* spp., & *Ceratitis* spp.), scales, and moths (Pylalidae).

[Return to the Agricultural ID Aid Manual](#)

Capsicum frutescens L.



Common Names

Cayenne pepper, Chili pepper, Piment, Pimento, Tabasco pepper, Tabasco-sauce pepper

Description

Green waxy, irregular shape, smooth and waxy skin, stem at top, seeds.

Origin

World-wide

Comments

Host for fruit flies (including *Bactrocera* spp., & *Ceratitis* spp.), leaf mining flies (Agromyzidae), moths (Noctuidae), and beetles (Curculionidae).

[Return to the Agricultural ID Aid Manual](#)

***Brassica rapa* L.**



Common Names

Celery cabbage, Chinese cabbage, Pe-tsai

Description

Green leaves with broad pale green petioles, thick dense puckered texture.

Origin

Asia, China

Comments

Host for species of aphid, scale, mealybugs, moths (Noctuidae, Gelechiidae), and leaf mining flies (Agromyzidae).

[Return to the Agricultural ID Aid Manual](#)

Cocos nucifera L.



Common Names

Coco palm, Coconut, Coconut palm, Cocotero

Description

Brown fibrous husk, oily fibrous white flesh, milky white liquid, round.

Origin

Mexico, Tahiti

Comments

Host for species of mealybugs, beetles (Curculionidae), and scales.

[Return to the Agricultural ID Aid Manual](#)

Coffea arabica L.



Common Names

Cafe, Coffee, Coffee berries, Kap-pe, Kopi, Kopai

Description

Dark green glossy leaves, elliptic, up to 6 inches long; green to red fruit 1/2 inch long

Origin

Central America, Brazil

Comments

Host for fruit flies (including *Anastrepha* spp., *Bactrocera* spp., & *Ceratitis* spp.), and scales (green scales).

[Return to the Agricultural ID Aid Manual](#)

Chrysophyllum oliviforme L.



Common Names

Damson plum, Olive plum, Satin leaf

Description

Green or brown or bright red or purple, round, 2 1/2 - 3 inch diameter, scaly skin, transparent seeds, lavender pulp.

Origin

Africa, China, Haiti, Israel, Jamaica, South America, Thailand

Comments

Host for fruit flies (including *Anastrepha suspensa*, *Bactrocera curcurbitae*, & *Ceratitis capitata*), moths (Pyralidae), and mealybugs.

[Return to the Agricultural ID Aid Manual](#)

Euphoria Longan (Lour.) Steud.



Common Names

Dragon's eye, Longan, Longyen, Lungan

Description

Similar to litchi, but yellow-brown to brown, 1 inch round, smooth skinned, whitish translucent pulp, single black seed.

Origin

Philippines, Taiwan, Thailand, Vietnam

Comments

Host for fruit flies (including *Bactrocera dorsalis*, & *Ceratitis capitata*), mealybugs, and scale.

[Return to the Agricultural ID Aid Manual](#)

***Durio zibethinus* Murray.**



Common Name

Durian

Description

Olive-green or gray-yellow, creamy yellow flesh, 6 large yellow-brown seeds, spines, up to 10 lbs., ovoid, foul odor.

Origin

Malaysia, Thailand, Vietnam

Comments

Host for mealybugs.

***Cymbopogon citratus* (DC ex Nees) Stapf.**



Common Names

Fever grass, Lemon grass

Description

Spikelets, concave on back, linear, seldom flowers, dense clumps to 3 feet long and 1/2 inch wide.

Origin

Bangladesh, Cambodia, India, Indonesia, Philippines, Vietnam

Comments

Host for moths (Pyralidae), aphids, thrips, and scales.

[Return to the Agricultural ID Aid Manual](#)

Melicoccus bijugatus Jacq.



Common Names

Genip, Genipa, Genipe, Honeyberry, Limoncillo, Mamoncillo, Spanish lime

Description

Green-yellow, round, leathery, yellow-pink translucent flesh, large brown seed.

Origin

Central America, El Salvador, Guatamala, Vietnam

Comments

Host for mealybugs.

[Return to the Agricultural ID Aid Manual](#)

Annona muricata L.



Common Names

Guanabana, Nanqka, Prickly custard apple, Soursop

Description

Green-brown or yellow-green, heart-shaped, warts, many long curved fleshy spines, hard brownish-black pip, many black seeds, white flesh, 6-9 inches long.

Origin

Philippines, South America, Vietnam

Comments

Host for fruit flies (including *Anastrepha* spp., *Bactrocera* spp., & *Ceratitis* spp.), scale, mealybugs, and moths (Gelechiidae, Lycaenidae).

[Return to the Agricultural ID Aid Manual](#)

Artocarpus heterophyllus Lam.



Common Names

Jack, Jackfruit, Jakfruit

Description

Yellow-green, white cream or pink flesh, ovate, prickles, warts, large brown flat seeds, fruit up to 3 feet in length, and 20 inch diameter.

Origin

Fiji, Philippines, Polynesia, Tahiti, Thailand, Vietnam

Comments

Host for fruit flies (including *Bactrocera* spp.), moths (Pyralidae), and scales.

[Return to the Agricultural ID Aid Manual](#)

Sandoricum koetjape (Burm. f.) Nakai



Common Names

Kechapi, Santol, Sentul

Description

Whitish translucent pulp.

Origin

Laos, Philippines, Thailand, Vietnam

Comments

Host for mealybugs and scale.

***Lansium domesticum* Corr.**



Common Names

Langsat, Lansek, Lanson, Lanzon, Lanzone

Description

Yellow-brown or greenish, round or oval, velvety, hairy, bitter and milky juice, translucent white flesh, 4 or 5 segments, with large green pips, 1-2 inches long.

Origin

Cambodia, China, Indonesia, Malaysia, Philippines, Vietnam

Comments

Host for fruitflies (including *Bactrocera* spp.), scale, mealybugs, moths (Gelechiidae), and beetles (Curculionidae).

[Return to the Agricultural ID Aid Manual](#)

Litchi chinensis Sonn.



Common Names

Leechee, Lichi, Litchi, Lychee

Description

Deep pink or brownish-yellow or bright red or purple-red, white translucent pulp, thin but tough scaly leathery skin, 1 seed, round, 1 1/2 inch diameter, clusters, brown pip.

Origin

China, Hong Kong, Mexico, Taiwan, Thailand, Vietnam

Comments

Host for fruit flies (including *Bactrocera* spp., *Dacus* spp., & *Ceratitis* spp.), moths (Tortricidae), beetles (Curculionidae), and mealybugs.

[Return to the Agricultural ID Aid Manual](#)

***Pouteria sapota* (Jacq.) H. Moore & Stearn**



Common Names

Mamey colorado, Mamey sapote, Mammee, Marmalade fruit, Marmalade plum, Sapota, Sapote, Zapote

Description

Brown, orange-red pulp, ovoid, rough, 1-4 seeds, 4-8 inches long.

Origin

Central America, El Salvador, Guatemala, Mexico

Comments

Host for fruit flies (including *Anastrepha* spp., *Bactrocera dorsalis*, & *Ceratitis capitata*), moths (Gelechiidae, Pyralidae), and mealybugs.

[Return to the Agricultural ID Aid Manual](#)

Mangifera indica L.



Common Names

Manga, Mangga, Mango, Mangué

Description

Green or yellow or orange or red or purple, pale yellow-orange flesh, stiff leathery skin, large flat seed, oval.

Origin

El Salvador, Guatamala, Mexico, Philippines, Vietnam, World-wide

Comments

Host for fruit flies (including *Anastrepha* spp., *Bactrocera* spp., & *Ceratitis* spp.), scale, mealybugs, moths (Tortricidae), and beetles (Curculionidae).

[Return to the Agricultural ID Aid Manual](#)

Garcinia mangostana L.



Common Names

Mangosteen

Description

Reddish-purple or dull purple-brown, smooth thick skin, 5-7 seeds, 2-3 inch diameter, round, 4 large sepals, 4-8 distinct white raised marks on bottom, waxy white syrupy flesh divided into sections.

Origin

Cambodia, China, Indonesia, Malaysia, Philippines, Singapore, Thailand, Vietnam

Comments

Host for fruit flies (including *Ceratitis* spp.), mealybugs, moths (Gelechiidae), and scales.

[Return to the Agricultural ID Aid Manual](#)

Carica papaya L.



Common Names

Melon tree, Papaya, Papeta, Pappali, Pawpaw

Description

Green-yellow to orange-red, pear-shaped, red-orange flesh, thin skin, small seeds, seeds black when ripe.

Origin

Mexico, Philippines, Vietnam

Comments

Host for fruit flies (including *Anastrepha* spp., *Bactrocera* spp., & *Ceratitis* spp.), scale, mealybugs, and moths (Gelechiidae, Pyralidae).

[Return to the Agricultural ID Aid Manual](#)

***Prunus persica* (L.) Batsch**



Common Names

Nectarine (variety), Peach

Description

Yellow-orange, golden pulp, round brown center stone.

Origin

Australia, China, France, Greece, Israel, Italy, Japan, South Africa, Spain

Comments

Host for fruit flies (including *Anastrepha* spp., *Bactrocera* spp., & *Ceratitis* spp.).

[Return to the Agricultural ID Aid Manual](#)

Ananas comosus (L.) Merr.



Common Names

Pineapple

Description

Yellow-brown-green skin, oval, spikes, crown of leaves at top.

Origin

Argentina, Brazil, Kenya, Paraguay, Tahiti, Uruguay

Comments

Host for various species of beetles (Curculionidae) and moths (Pyralidae, Tortricidae).

[Return to the Agricultural ID Aid Manual](#)

***Hylocereus polyhizus* (A. Webber) Britton
& Rose.**

***H. undulatus* (Haw.) Britton & Rose.**



Common Names

Pitahaya, Pitajaya, Pitaya, Organ pipe cactus, Strawberry pear

Description

Red, white spongy pulp with small black seeds, up to 4 inches long, thick skin.

Origin

Mexico

Comments

Host for mealybug and scale.

[Return to the Agricultural ID Aid Manual](#)

Punica granatum (L.)



Common Names

Pomegranate

Description

Pale pink-yellow or bright red, thick leathery skin, numerous seeds surrounded by sac of juice, tomato-shaped.

Origin

Europe, Iran, Israel, Middle East, Spain

Comments

Host for fruit flies (including *Anastrepha* spp., *Bactrocera* spp., & *Ceratitis* spp.), scale, mealybug, and moths (Tortricidae, Pyralidae).

[Return to the Agricultural ID Aid Manual](#)

***Citrus maxima* (Burman) Merr.**



Common Names

Pomelo, Pommelo, Pompelmous, Pummelo, Shaddock

Description

Green, yellow, or orange skin, pear shaped, large seed, divided green or pink flesh, thick skin.

Origin

Cambodia, Laos, Malaysia, Philippines, Tahiti, Taiwan, Thailand, Vietnam

Comments

Host for fruit flies (including *Anastrepha* spp., *Bactrocera* spp., & *Ceratitis* spp.).

[Return to the Agricultural ID Aid Manual](#)

Nephelium lappaceum L.



Common Names

Rambutan, Rampostan

Description

Red, pearly white pulp, red and green hair-like spines, shiny-brown seed.

Origin

Cambodia, China, Indonesia, Laos, Malaysia, Philippines, Singapore, Thailand, Vietnam

Comments

Host for fruit flies (including *Bactrocera* sp.) and moths (Lycaenidae, Pyralidae).

[Return to the Agricultural ID Aid Manual](#)

Passiflora quadrangularis L.



Family Name

Passifloraceae

Common Names

Badea, Giant granadilla, Barbadine, Maracuja acu, Maracuja grande, Maracuja manao, Markesa, Pasiona, Rata-puhul, Su-khatha rot, Timon belanda

Description

Yellow or yellowish-green fruit, oblong ovoid, often three grooved, sometimes with purple spots, 8 to 12 inches long.

Origin

Brazil, Indonesia, Venezeula

Comments

Host for *Anastrepha* spp. (Tephritidae), and scale (Diaspididae).

Hordeum vulgare L.



Family Name

Gramineae or Poaceae

Common Name

Barley

Description

Erect grass up to 4 ft. tall with flat blades, 1/4 - 5/8 in. wide, spike up to 4 in., with 2-6 rowed spikelets.

Origin

Worldwide in temperate climates

Comments

Host for noxious weed seed (*Avena* spp., others), fungi.

Anacardium occidentale L.



Family Name

Anacardiaceae

Common Names

Acalou, Apu, Caju, Cajugaha, Cajiul, Cashew, Cashew apple, Cashew nut, Gajas, Ma muang himma phan, Maranon, Merey, Mundri maram, Teli huhu'.

Description

Kidney shaped nut, tan in color, 1.5 inches long, fleshy fruit, bell shaped, 2-3 inches long, yellow-red in color.

Origin

India, El Salvador, Central America, thrives in hot, semi-arid climates.

Comments

Host for moths (Pyralidae), and beetles (Scolytidae). Fleshy fruit host for fruit flies, scale insects, and mealy bugs.

***Castanea dentata* (Marshal) Borkh.,
Castanea crenata Siebold and Zucc.,
Castanea sativa Miller**



Family Name

Fagaceae

Common Names

Chestnut, American chestnut, European chestnut, Japanese chestnut

Description

Shell 1 inch long, dark brown, cap broadly curved and course, pointed posteriorly.

Origin

Northern temperate regions.

Comments

Host for fruit flies (*Dacus* spp.), beetles, and moths (Tortricidae).

Citrus spp. L., Citrofortunela spp. L.



Family Name

Rutaceae

Common Name

Citrus peel

Description

Light orange to dark brown depending on state of dryness, fragrant.

Origin

World-wide (mostly seen as medicinal herb from Asia).

Comments

Host for beetles (Derestidae, and Anthribidae), scale, moths (Plutellidae), and plant pathogens (*Xanthomonas campestris*, and *Guignardia citricarpa*).

Anona reticulata L.



Family Name

Anonaceae

Common Names

Custard apple, Sweet sop, Bullock's heart

Description

Nearly spherical fruit with a lumpy surface, color reddish brown on a green background.

Origin

Peru, Ecuador

Comments

Host for fruit flies (including *Anastrepha* spp. & *Dacus* spp.), mealybugs, moths (Pyrilidae), scale insects, and thrips.

Zingiber officinale Roscoe.



Family Name

Zingiberaceae

Common Names

Ginger, Ginger root

Description

Tuberous, aromatic rhizome.

Origin

Many tropical and semi-tropical regions.

Comments

Host for Mealybug, scale (Diaspididae), moths, and beetles (Curculionidae and Chrysomelidae).

***Panax pseudoginseng* Wallich., *Panax ginseng* C. Meyer., *Panax japonica* (C. Meyer) H. Haro., *Panax quinquefolius* L.**



Family Name

Araliaceae

Common Names

Ginseng, San-ch'i, Chinese ginseng, Tochiba-ninjin, American Ginseng.

Description

Tapering root with variable number of lateral roots, 2-12 inches long, tan to reddish brown.

Origin

Eastern Asia, North America

Comments

Host for scale and moths (Pyralidae). American Ginseng regulated under CITES.

Psidium gaujava L.



Family Name

Myrtaceae

Common Names

Guava, Common guava, Goiaba, Goyavier, Guayaba, Goyave, Guyabe, Apple guava, Pear guava, Yellow guava.

Description

Fruits are round, pear-shaped, or lanceolate, with a green or yellow skin, very fragrant when ripe.

Origin

Tropical America

Comments

Host for fruit flies (*Anastrepha* spp., *Ceratitis* spp., *Dacus* spp., and *Rhagoletis* spp.), moths, thrips, and mealybugs.

Corylus avellana L.



Family Name

Corylaceae (Betulaceae)

Common Names

Hazelnut, Filbert, Cobnut, European Filbert

Description

Thick shelled, brownish red nut, 1/2 inch to 1 inch in diameter.

Origin

Widely distributed in the Northern Hemisphere.

Comments

Host for beetles (Curculionidae) and moths (Pyralidae & Tortricidae).

Spondias mombin L.



Family Name

Anacardiaceae

Common Names

Hog plum, Yellow mombin, Circuela, Jobo, Caja mirim, Mombin jaune, Marapa, Spanish plum, Taperiba

Description

An oval, yellow fruit with a large hard stone, distinct turpentine odor.

Origin

Central America, Central Africa

Comments

Host for fruit flies (*Anastrepha* spp., *Dacus* spp., and *Rhagoletis* spp.), mealybugs, and scale (Diaspididae).

Jarilla caudata



Family Name

Caricaceae

Common Name

Jarilla

Description

Fruit 3-4 inches long, oblong to elliptical, 4 or 5 spike-like projections, mottled green and white, pithy white center with many seeds.

Origin

Mexico, Central America

Comments

Host for fruit flies.

Ziziphus jujuba Miller, *Ziziphus mauritana* Lam.



Family Name

Rhamnaceae

Common Names

Jujube, Chinese jujube, Indian jujube, Chinese date, French jujube, Tsao, Kankole, Beri, Bedara, Ber, Bidara, Ilantai, Ma-tan, Masan

Description

Fruit obvoid to subglobose, yellow-green and sometimes mottled with brown, 1 inch.

Origin

Indonesia

Comments

Host for fruit flies (*Dacus dorsalis*), and moths (Carposinidae and Tortricidae).

Citrus hystrix L.



Family Name

Rutaceae

Common Names

Kaffir lime, Ichang lime, Makrut, Djeruk purut

Description

Fruit up to 2 in. wide, nearly spherical, skin yellow-brown to yellow-green and very wrinkled.

Origin

Thailand, Indonesia, many Asian countries.

Comments

Host for scale (*Parlatoria ziziphi*, Diaspididae), caterpillars (Papilionidae), and plant pathogens (*Xanthomonas campestris*, *Phomopsis* spp., *Guignardia* spp., and *Elsinoe* spp.).

[Return to the Agricultural ID Aid Manual](#)

Citrus hystrix L.



Family Name

Rutaceae

Common Names

Kaffir lime leaves

Description

Leaf and expanded petiole appear to be a single "pinched" leaf, up to 6 in. long and 2 in. wide, dark green on top, lighter on the bottom, very fragrant.

Origin

Thailand, Indonesia, Southeast Asia

Comments

Host for scale (Diaspididae and Margarodidae), beetles (Curculionidae), and plant pathogens (*Xanthomonas capestis*, and *Guignardia citricarpa*).

[Return to the Agricultural ID Aid Manual](#)

Cucumis melo L.



Family Name

Cucurbitaceae

Common Names

Melon

Description

Round, oval, or obvoid in shape, up to 12 inches long, smooth skin, grooved, ribbed or netted, varieties vary in color.

Origin

World-wide

Comments

Host for beetles, flies (Agromyzidae), seedbugs, moths, termites (Rhinotermitidae), crickets, thrips, grasshoppers (Acrididae), and planthoppers (Dictyopharidae).

[Return to the Agricultural ID Aid Manual](#)

Syzygium malaccensis (L.) Merr. & Perry



Family Name

Myrtaceae

Common Names

Mountain apple, Malay apple, Malay rose apple, Jambu merah, Pomerac jambos

Description

Bell-shaped, about 2 inches long, skin yellow-red to red when ripe, white flesh.

Origin

Malaysia, Thailand, Indonesia, Southeast Asia

Comments

Host for fruit flies (*Anastrepha* spp., *Ceratitis* spp., *Dacus* spp.), mealybugs, scale insects and moths.

[Return to the Agricultural ID Aid Manual](#)

***Solanum muricatum* Aiton.**



Family Name

Solanaceae

Common Names

Pepino, Pepino dulce, Melon pear, Melon piore, Sweet cucumber

Description

Violet-purple fruit, ovoid, 4 to 6 inches long, firm yellow flesh.

Origin

Brazil, Mexico

Comments

Host for beetles (Curculionidae), and moths (Pyralidae).

[Return to the Agricultural ID Aid Manual](#)

***Protea cyanriodes* L., *Protea repens* Thunb.,
Protea mellifera Thunb.**



Family Name

Proteaceae

Common Names

Protea, Boer honey pot, King protea, Honey flower, Sugar bush, Honey protea

Description

Elliptic leaves 3-5 inches long, terminal inflorescence, 5 inches long, shingled, smooth, shiny and silky, sticky bracts, varying in color from white to nearly red.

Origin

South Africa, Australia

Comments

Host for beetles, thrips (Aeolothripidae), moths, scales, mealybugs, and psyllids.

Solanum tuberosum L.



Family Name

Solanaceae

Common Names

Potato, Tuber, Spud

Description

Variable size & color "potato", tuber oval to round, oblong, varies by cultivar, skin smooth to netted, size small to large (less than 1 oz. up to 18 oz. or more), color normally tan/brown, white, red.

Origin

World-wide distribution

Comments

Host for beetles (Curculionidae, Chrysomelidae), moths (Gelechiidae), flies (Agromyzidae), nematodes (*Globodera* spp., and *Heterodera* spp.), disease organisms.

***Oryza rufipogon* Griffith.**



Family Name

Poacea

Common Names

Red rice

Description

Similar to *O. sativa*, slightly smaller, husk reddish to rust color.

Origin

Many Southeast Asian countries

Comments

Noxious weed, contaminant of *Oryza sativa*, herb imports, and other misc. seed shipments, usually for consumption.

Salacca edulis Reinw.



Family Name

Arecaceae

Common Names

Salak, Snakefruit

Description

Round shape, reddish-brown skin color, made up of snake-like scales.

Origin

Indonesia, Thailand

Comments

Host for beetles (Cerambycidae), scale insects, mealybugs.

Averrhoa carambola L.



Family Name

Averrhoaceae

Common Names

Starfruit, Carambola, Caramba, Country gooseberry, Kamaranga, Five corner, Ma-fu'ang, Tamarta, Tapanima, Belimbing manis.

Description

Yellow or golden-brown fruit, up to five inches long, with three to five deep ribs.

Origin

Australia, East Asia, Phillipines

Comments

Host for fruit flies (*Dacus* spp. & *Anastrepha* spp.), mealybugs, moths (Gelechiidae), and ants (*Solenopsis* spp.).

Saccharum officinarum L.



Family Name

Poaceae (Gramineae)

Common Names

Sugar cane

Description

Very tall, stout perennial grass up to 15 feet high, with solid yellowish-green canes 3/4 to 2 inches thick, rich green leaves, arching.

Origin

China, East Indies, Hawaii, many tropical and sub-tropical areas

Comments

Host for mealybugs, moths (Pyralidae), and beetles (Curculionidae). Sap is a major source of sugar.

Saccharum spontaneum L. is a listed FNW.

***Zanthoxylum simulans* Hance, *Zanthoxylum ailanthoides* Siebold & Zucc., *Zanthoxylum piperitum* DC., *Zanthoxylum fagara* (L.) Sarg.**



Family Name

Rutaceae

Common Names

Szechuan Pepper, Chinese Pepper, Huachiao, Japan Pepper, Wild Lime

Description

Round seed capsule, dehiscent, 1/4 inch in diameter, with shiny black seed.

Origin

China, Nepal, Korea, Japan, Africa, South America, and West Indies. Most commonly intercepted as Medicinal Herbs from Asian sources.

Comments

Host for whiteflies (Aleyrodidae), moths (Tortricidae), and citrus diseases.

***Cyphomandra betacea* (Cav.) Sendtner.**



Family Name

Solanaceae

Common Names

Tree tomato, Arbol de tomates, Palo de tomate, Tomate d'arbo, Tomate Frances

Description

Orange-red fruit, ovoid, approximately two inches long.

Origin

South America (tropical and sub-tropical)

Comments

Host for beetles (Curculionidae) and moths (Pyralidae).

Terminalia catappa L.



Family Name

Combretaceae

Common Names

Tropical almond, Singapore almond, Alemendro, Myrobalan

Description

Fruit approximately two inches long, flattened, greenish or reddish, one seed.

Origin

Malay Peninsula, World-wide in tropical areas

Comments

Host for fruit flies (*Anastrepha* spp., *Ceratis capitata*, and *Dacus* spp.), and scale (Diaspididae).

Curcuma domestica L.



Family Name

Zingiberaceae

Common Names

Turmeric, Indian saffron

Description

Rhizomes short, tuberous, yellow flesh.

Origin

India, Southeast Asia, tropics

Comments

Host for scale (Diaspididae) and moths (Pyralidae).

Triticum spp. L.



Family Name

Poaceae

Common Names

Wheat, Bread wheat

Description

Leaf blades flat, stems 1 to 4 feet tall, thick spikes, two to four sided.

Origin

World-wide

Comments

Host for beetles (Anobiidae, Curculionidae, and Dermestidae), smuts (*Neovossia indica*, and *Urocystus* spp.), rusts (*Puccinia* spp.), and sooty mold (*Cladosporium* spp.).

Agricultural Commodity Identification Aid Manual

References

- Bailey, Liberty Hyde and Ethel Zoe Bailey. 1976. **Hortus Third (A Concise Dictionary of Plants Cultivated in the United States and Canada)**. MacMillan Publishing Co., N.Y., N.Y., and Collier MacMillan Publishers, London.
- Facciola, Stephen. 1990. **Cornucopia, A Source Book of Edible Plants**. Kampong Publications, Vista, CA.
- Sharp, Jennifer L. and Guy J. Hallman. 1994. **Quarantine Treatments for Pest of Food Plants**. Westview Press, Inc., Boulder, Colorado.
- Terrell, Edward E. 1977. **A Checklist of Names of 3,000 Vascular Plants of Economic Importance**. Agricultural Research Service, United States Department of Agriculture.
- United States Department of Agriculture. **GRIN database**. Agricultural Research Service.
- United States Department of Agriculture. **List of Intercepted Plant Pests. 1984-87**. APHIS 82- 11 through 82-14. Animal and Plant Health Inspection Service, Plant Production and Quarantine.
- White, Ian and Marlene M. Elson-Harris. 1992. **Fruit Files of Economic Significance: Identification and Bionomics**. Redwood Press Ltd, Melksham, U.K.

[Back to Manual](#)

[Back to Top](#) | Copyright © 2008 State of California