

# Pest Exclusion Branch Updates: Cotton Seed Bug

NURSERY ADVISORY BOARD – 12/18/2025



# COTTON SEED BUG

- Cotton seed bug, *Oxycarenus hyalinipennis*
- A-rated; federally actionable
- Hosts include Malvaceae (primary crop of concern is cotton)
- Found in Florida (Key West) in 2010; declared eradicated in 2014
- First find in California on *Abutilon* in Los Angeles in 2019
- Detected in 8 counties to date



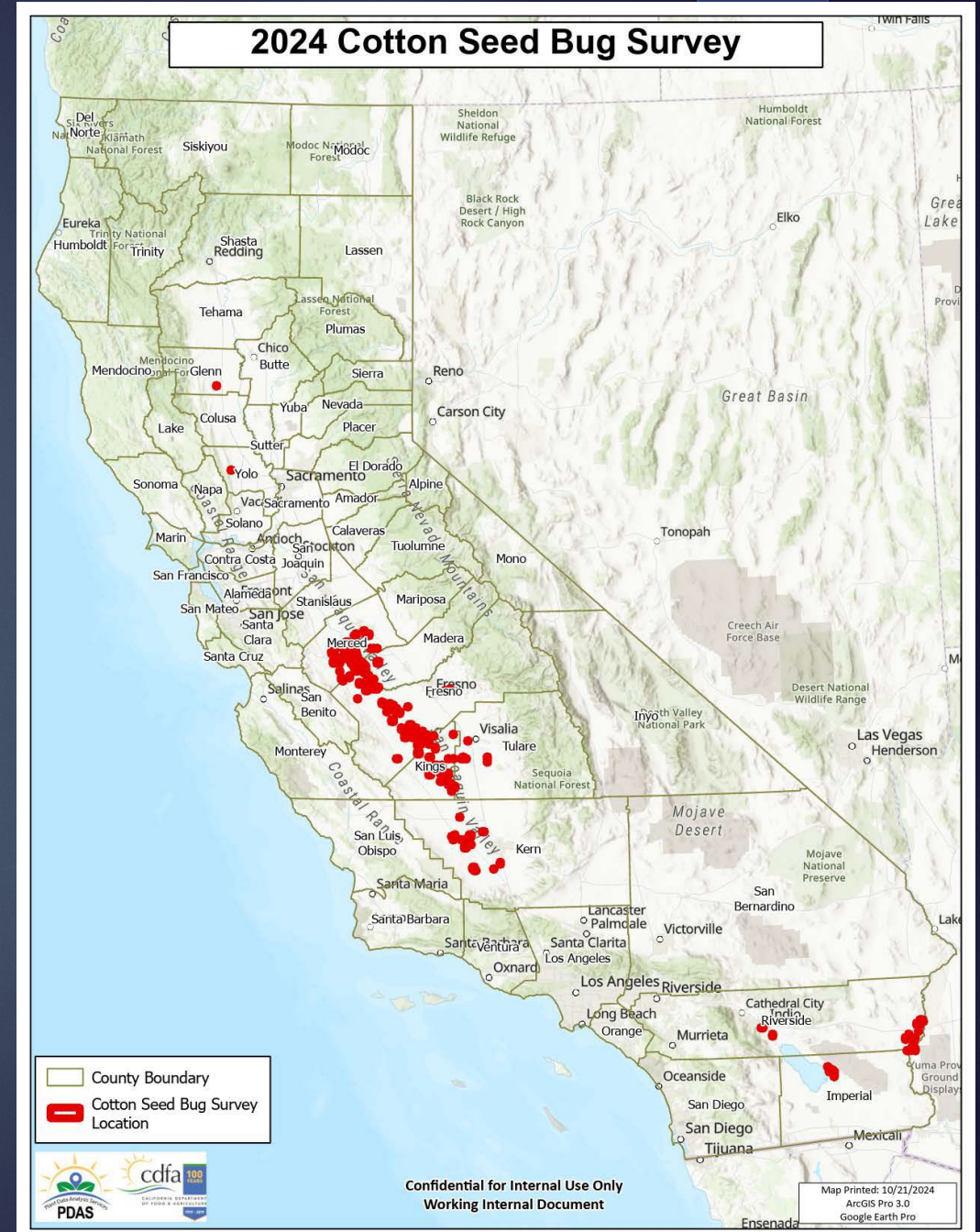


# COTTON SEED BUG

Annual survey of commercial cotton and okra fields by the Integrated Pest Control Branch – Cotton Pests Control Program

## 2024 CSB Commercial Cotton/Okra Survey

<b>Total fields surveyed</b>	<b>201</b>
Cotton acreage surveyed	14,073
Cotton boll samples collected	8,768
Okra acreage surveyed	694
<b>Total acreage surveyed</b>	<b>14,764</b>
<b>CSB detections</b>	<b>0</b>



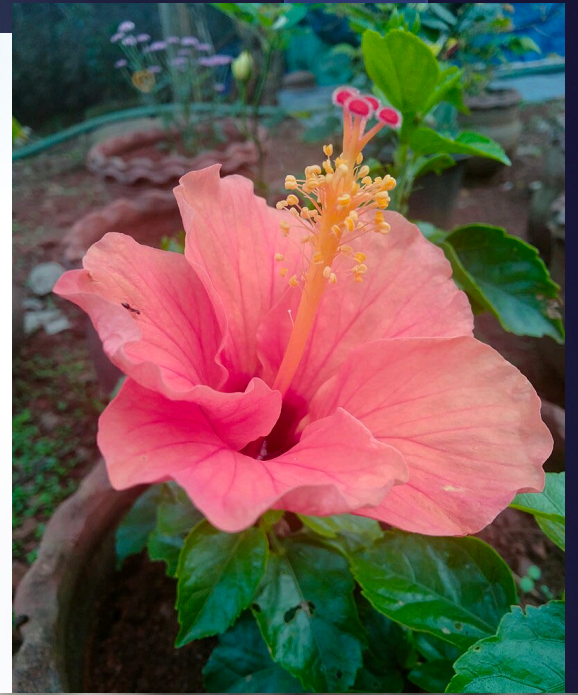
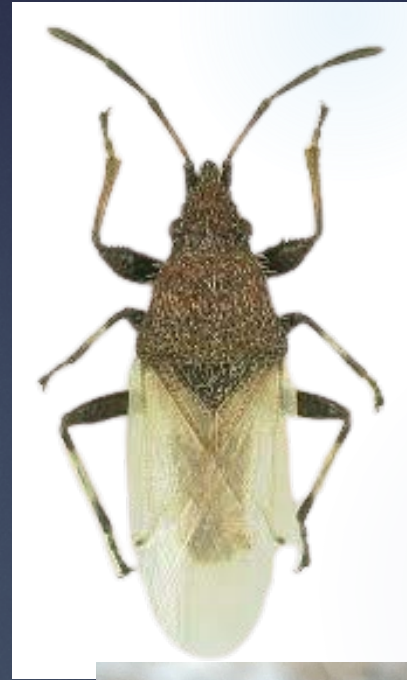


# COTTON SEED BUG

Survey of nurseries with CSB host plants by CACs and the Pest Detection / Emergency Projects Branch, funded via federal PPA 7721 Nursery Survey Project

Counties surveyed in 2025:

- Los Angeles
- Orange
- Riverside
- San Diego
- Santa Barbara
- Ventura
- Santa Clara





# COTTON SEED BUG

First known detections of CSB in a nursery setting in multiple counties in 2025

Primary hosts: *Hibiscus* & *Malva*

Total CSB specimens collected and confirmed from nurseries: 85

USDA published updated New Pest Response Guidelines in Nov 2025

- Includes recommended guidelines for nursery settings (Appendix A)

## **Nursery CSB Actions Summary (updated 12/17/25)**

<b>Status</b>	<b># of Nurseries</b>	<b>Total Plants</b>
<b>Treated &amp; Released*</b>	<b>10</b>	<b>8,608</b>
<b>Plants Destroyed</b>	<b>3</b>	<b>27</b>
<b>Treated &amp; On Hold</b>	<b>1</b>	<b>131</b>
<b>On Hold Pending Destruction</b>	<b>1</b>	<b>15</b>
<b>Total</b>	<b>15</b>	<b>8,781</b>

\* Nursery stock from CSB-positive lots may be released – after treatment and reinspection – for intrastate movement/sale

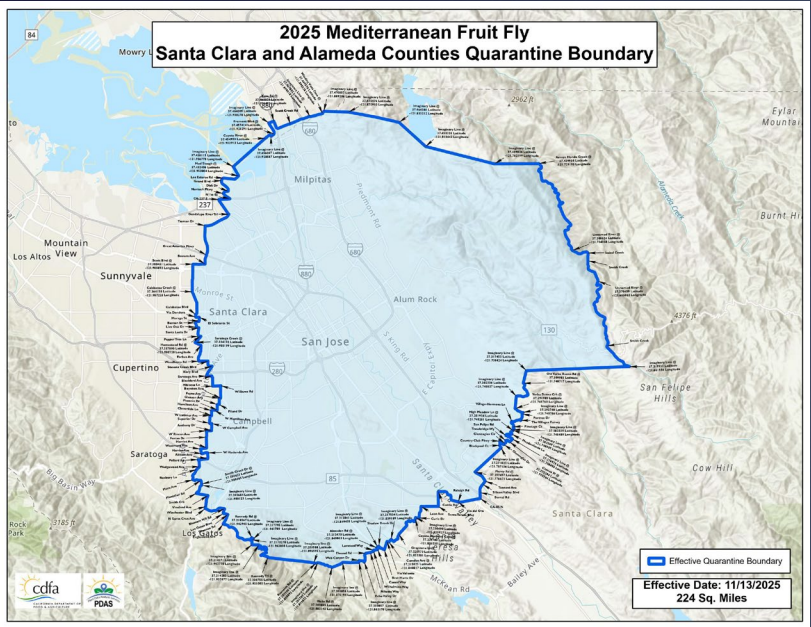


# Pest Exclusion Branch Updates: Quarantines Update

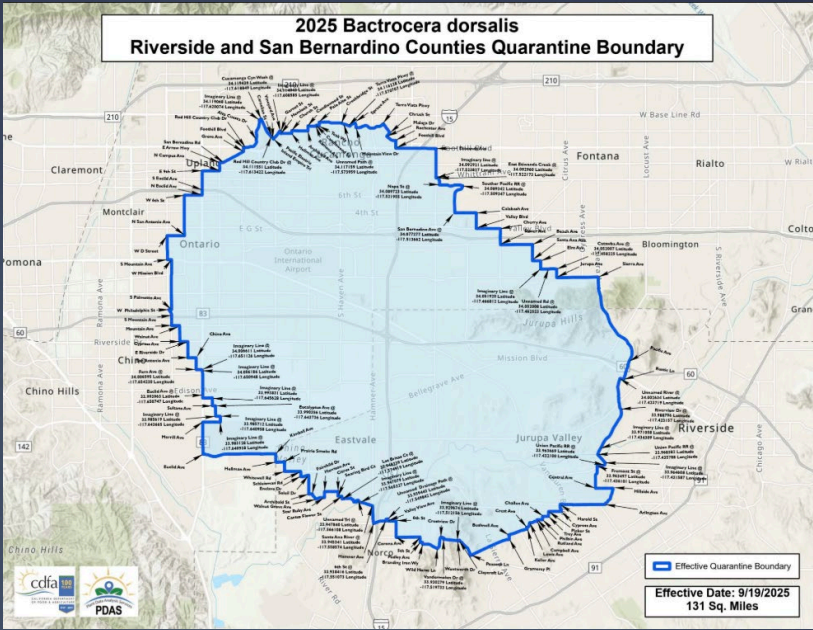
NURSERY ADVISORY BOARD – 12/18/2025



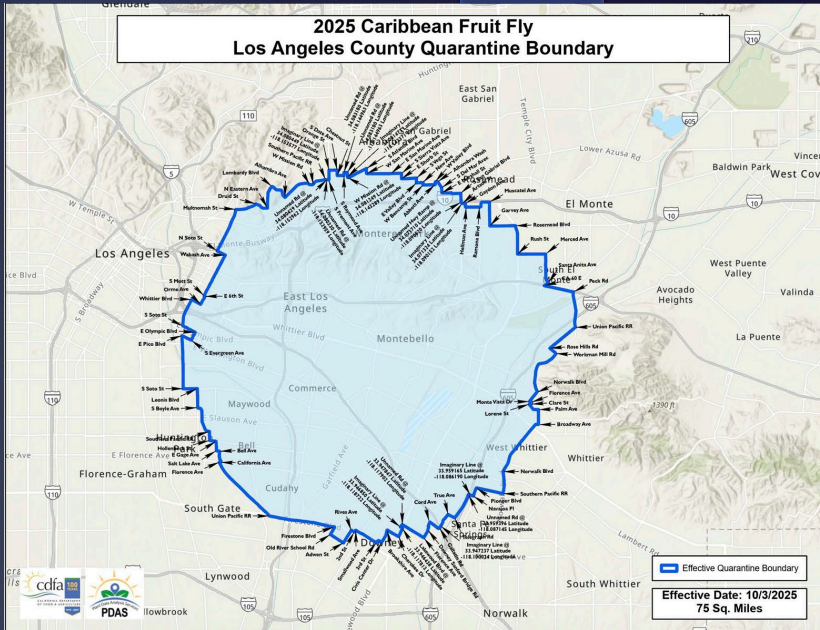
# 2025 IFF QUARANTINES



MedFly – San Jose – est. 8/19/2025



OFF – Jurupa Valley – est. 9/19/2025

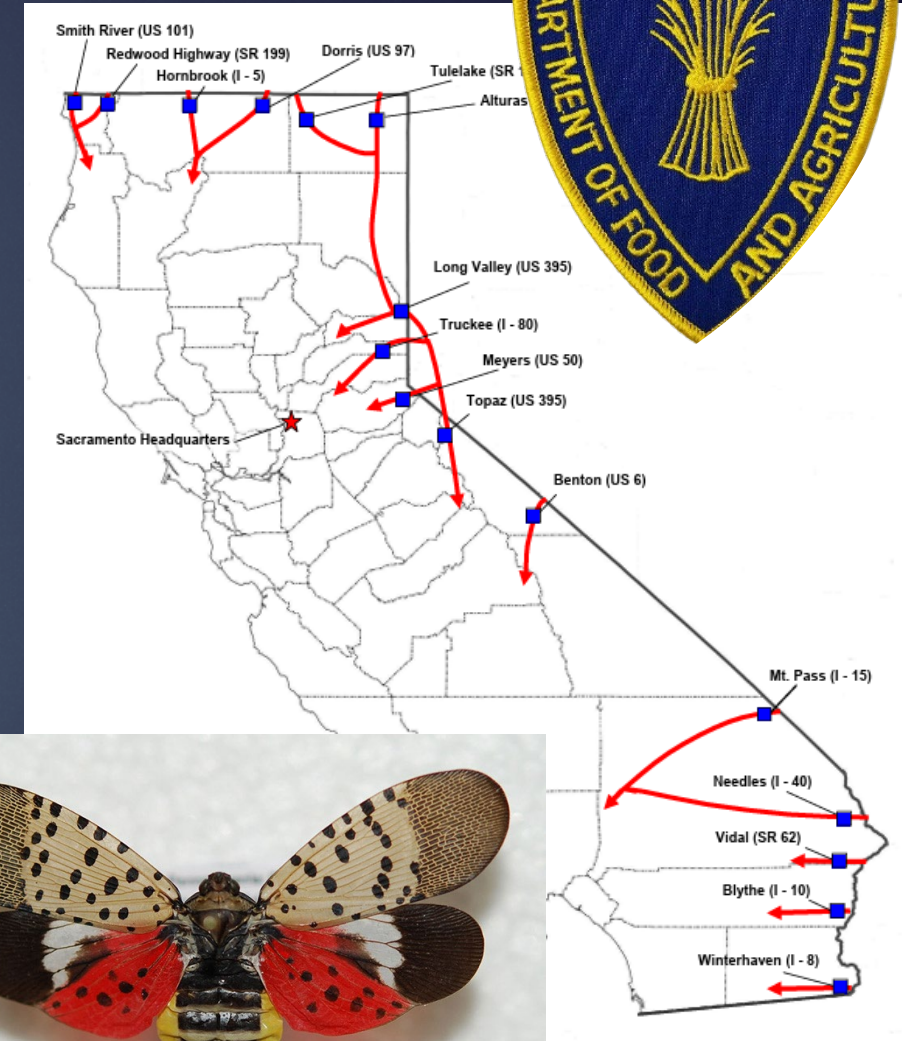


CFF – LA County – est. 10/3/2025



# OTHER QUARANTINE UPDATES

- Guava Root Knot Nematode State Exterior Quarantine (3 CCR § 3289)
  - New quarantine effective 7/1/2025
- Spotted Lanternfly State Exterior Quarantine (3 CCR § 3287)
  - Added South Carolina in August 2025
- Japanese Beetle State Exterior Quarantine (3 CCR § 3280)
  - Added Oregon, with enforcement starting in 2026
- Pink Bollworm State Interior Quarantine (3 CCR § 3409)
  - Enforcement ceased in December 2025; regulation repeal pending





# OTHER QUARANTINE UPDATES

- Modernization of IFF Eradication Regulations
  - Replaced 13 species-specific eradication regulations with one statewide Tephritidae eradication regulation (3 CCR § 3591.32)
  - Changes effective 12/9/2025
  - Note: no changes to IFF state interior quarantines
- Creation of a new Border Protection Stations Branch
  - Previously a program within Pest Exclusion
  - Acting Branch Chief rotation while recruitment is ongoing

