

Beet Curly Top Virus Control Board Fall 2022 Meeting



**California Department of Food and Agriculture
Fresno, California
November 10, 2022**

TABLE OF CONTENTS

November 10, 2022

	<u>Page #</u>
AGENDA	1-2
MINUTES	
BCTVCB Special Meeting October 20, 2022	3-7
BOARD MEMBERS	8
Vacancies	9
PROGRAM UPDATES	
BCTVCP Fall 2022 Update PowerPoint	10-25
Acres Sprayed by Calendar Year 2008-2022	26
FISCAL MATTERS	
BCTVCB FY 22/23 Actual Budget + FY 23/24 Proposed Budget	27-28
Past Actual Expenditures	29
Received & Projected Revenue by Month (FY 22/23)	30
FY 21 Comparison of PTAB Tonnages and Revenues Received	31
Fund Condition Statement	32
Proposed CDFA Fund Agreement (FY 22/23)	33-34

California Department of Food and Agriculture
Beet Curly Top Virus Control Board

BOARD MEETING AGENDA

Thursday, November 10, 2022 at 9:30 a.m.

California Department of Food and Agriculture
 Integrated Pest Control Branch, Fresno Office
 2895 N. Larkin Ave, Suite A
 Fresno, CA 93727

Zoom Meeting Information:

Link: <https://us02web.zoom.us/j/85864682196>

Meeting ID: 858 6468 2196

Passcode: fall_meet1

All matters noticed on this agenda may be considered for action. Items listed on the agenda may be considered in any order at the discretion of the Board Chair. Any item not so noticed will not be considered or discussed. Each of the agenda items may include discussion and possible action by the Board. Time will be allowed for members of the public to make comments on each agenda item. All meeting agendas and notices are available on the California Department of Food and Agriculture website at: <https://www.cdfa.ca.gov/plant/meetings/>

Note: Public comment is possible on any item contained in this agenda. Audience members may address the Board following each agenda item. Each speaker from the audience is limited to three minutes. For information, please contact the Integrated Pest Control Branch, 2895 N. Larkin Suite A, Fresno, CA 93727. (559) 294-2031.

- | | |
|--|-----------------------------|
| 1. Call to Order/Introductions | Chairman Darryl Bettencourt |
| 2. Roll Call | Kaitlyn Beames, CDFA |
| 3. Review of Minutes | Chairman Darryl Bettencourt |
| a. October 20, 2022 Meeting Minutes | |
| 4. Board Vacancy | Lauren Murphy, CDFA |
| 5. Program Update | Christopher Dillon, CDFA |
| 6. BCTVCP Staffing Update | Michelle Dennis, CDFA |
| 7. BCTVCP Samples | |
| a. LAMP Update | Michelle Dennis, CDFA |

- b. Outside Laboratories Update** Canh Nguyen, CDFA
- 8. BCTVCP Pest Tracking App Update** Lauren Murphy, CDFA
- 9. Public Outreach Update** Christopher Dillon, CDFA
- 10. Hemp as a New Commodity for Assessment Update** Michelle Dennis, CDFA
- 11. Subcommittees**
 - a. Financial Subcommittee Recommendations** Subcommittee Chairman, Ron Dalforno
 - b. Diagnostics Subcommittee Update** Lauren Murphy, CDFA
- 12. Fiscal Matters** Canh Nguyen, CDFA
 - a. 2022/2023 Actual Budget Expenditures**
 - b. 2022/2023 Received and Projected Revenue**
 - c. Fund Condition Statement**
 - d. 2022/2023 Fund Agreement**
 - e. 2023/2024 Proposed Budget**
- 13. Discussion of Assessment Rates** Chairman Darryl Bettencourt
- 14. Public Comments on Matters Not on the Agenda**
- 15. Agenda Items for Future Meetings**
- 16. Adjourn**

AMERICAN WITH DISABILITIES ACT

Persons needing a disability-related accommodation or modification in order to attend or participate in any Board or Committee meeting or other Board activity may request assistance by contacting Kaitlyn Beames at (559) 294-2031. Providing your request at least five (5) business days before the meeting will help ensure availability of the requested accommodation.

California Department of Food and Agriculture
Integrated Pest Control Branch
Beet Curly Top Virus Control Board
2895 N. Larkin Ave. Suite A
Fresno, CA 93727
Conference Room
October 20, 2022
DRAFT MINUTES

MEMBERS PRESENT

Zach Bagley
Darryl Bettencourt
Mario Caimotto*
Ron Dalforno
Joseph Nicholl*
Kyle Perez*
Jennifer Sanders*
Daniel Waterhouse*

MEMBERS ABSENT

Dan Burns

CDFA PERSONNEL

Kaitlyn Beames
Michelle Dennis*
Chris Dillon
Mark McLoughlin*
Colleen Murphy*
Lauren Murphy
Canh Nguyen
Chris Ogawa
Heather Scheck*

*Participated via zoom

GUESTS

Mike Montna, California Tomato Growers Association
Lynda Schrupf, Kings County Agricultural Commissioner's Office

INTRODUCTIONS

The Beet Curly Top Virus Control Board (Board) Meeting was convened at 9:30 am by Board Chairman, Darryl Bettencourt, and introductions were made.

BAGLEY-KEENE OPEN MEETING ACT

The meeting was held in compliance with the Bagley-Keene Open Meeting Act.

REVIEW OF MINUTES

The Board reviewed and approved the minutes from the Beet Curly Top Virus Control Board Special Meeting that took place on September 15, 2022.

MOTION:

Ron Dalforno moved that the Board approve the minutes from the September 15, 2022, Board meeting. The motion was seconded by Mario Caimotto and passed unanimously.

VOTES:**YES**

Zach Bagley

NO

None

ABSTENTION

None

Darryl Bettencourt
 Mario Caimotto
 Ron Dalforno
 Joseph Nicholl
 Kyle Perez
 Jennifer Sanders
 Daniel Waterhouse

BCTVCP PERSONNEL/STAFFING

Lauren Murphy provided an update on Beet Curly Top Virus Control Program (BCTVCP) Personnel/Staffing. She stated that the program filled two Agricultural Pest Control Specialist positions: one for Kern County and one for the Sacramento Valley region. Additionally, Canh Nguyen and Ms. Murphy attended the Fresno State Career Fair on October 5 and received considerable interest from several students in the possibility of working for CDFA.

BCTVCP SURVEY RESOURCES

Chris Ogawa presented an update on BCTVCP survey staffing resources. He presented quarterly breakdowns of the different types of surveys that are completed throughout the year, the different locations statewide that are surveyed, and the number of staff required to cover all surveys year-round. The presentation highlighted the fact that an additional 2.5 Agricultural Pest Control Specialist (APCS) and 8 Pest Prevention Assistant (PPA) positions in order to provide full year-round coverage for all statewide surveys.

Discussion followed.

WORKLOAD ANALYSIS

Mr. Nguyen provided an update on the workload analysis that the Program is currently putting together as justification for additional permanent positions for the BCTVCP.

Discussion followed.

MOTION:

Due to the increased presence of beet curly top virus in new, non-traditional areas since 2020, the Beet Curly Top Virus Control Board requests that the California Department of Food and Agriculture add 2.5 Agricultural Pest Control Specialist and 8 Pest Prevention Assistant positions to the Beet Curly Top Virus Control Program in order to cover statewide surveys to ensure that all commodities that are paying, and have been paying, assessments into this Program are provided services from this Program. The motion was moved by Ron Dalforno, seconded by Mario Caimotto, and passed unanimously.

VOTES:

YES

Zach Bagley
 Darryl Bettencourt
 Mario Caimotto
 Ron Dalforno

NO

None

ABSTENTION

None

Joseph Nicholl
Kyle Perez
Jennifer Sanders
Daniel Waterhouse

BCTVCP SAMPLES

LAMP UPDATE

Michelle Dennis provided an update on the status of the beet curly top virus (BCTV) loop-mediated amplification (LAMP) assay. She stated that the most recent update from the UC Davis laboratory is that they are still working on validation issues. The UC Davis lab researchers will meet with CDFA lab personnel soon and present the status of the LAMP assay, discuss any progress that has been made, and provide training for the new protocols.

Discussion followed.

OUTSIDE LABORATORIES UPDATE

Mr. Nguyen provided an update on the potential use of outside laboratories for testing plant and beet leafhopper (BLH) samples for BCTV. He stated that he reached out to California State University, Fresno and University of California, Riverside. He received communication back from Dr. Maggie Ellis with CSU Fresno, but she is currently working with the California Tomato Research Institute (CTRI) on a research proposal for BCTV samples. Mr. Nguyen received a proposal from Dr. Kerry Mauck, with UC Riverside, for an annual cost of \$60,000. Dr. Mauck stated that their lab would be able to process various amounts of samples year-round with a 1–2-week turnaround time.

Discussion followed.

PUBLIC OUTREACH UPDATE

Colleen Murphy from CDFA's Plant Data Analysis Services (PDAS) presented a demonstration of the Beet Leafhopper Sighting Report Application that is currently being developed for industry, growers, pest control advisors, etc., to collect information from the field regarding beet leafhoppers (BLH) and curly top virus (CTV) using their phones, tablets, or computers that will be submitted directly to the BCTVCP.

Discussion followed.

Chris Dillon provided a public outreach update. He stated that on October 12th he attended a melon and tomato crop meeting at the University of California West Side Research and Extension Center in Five Points where he presented a BCTVCP update to the group.

Mr. Dillon also stated that he is in discussions with representatives from Pesticide Applicators Professional Association (PAPA) and California Association of Pest Control Advisors (CAPCA) in order to schedule opportunities for the BCTVCP to provide outreach and awareness regarding BCTV and BLH at their upcoming meetings and seminars. He further stated that he is working with the University of California Cooperative Extension to develop an online educational module with content curated around BCTV and BLH.

Finally, Mr. Dillon announced that there is a new BCTVCP webpage that is now live. Ms. Murphy presented the new BCTVCP web page to the Board.

Discussion followed.

RESEARCH SUBCOMMITTEE

Ms. Murphy provided an update on what she was able to discover regarding previous BCTVCB subcommittees. She stated the Board previously established a Diagnostics Subcommittee that discussed and provided recommendations on items such as developing criteria for requests for proposals, directing funding for research efforts, etc. The Board decided there is a need to establish a new Diagnostics Subcommittee to take a deeper look into issues that are more prevalent to the BCTVCP today.

Discussion followed.

MOTION:

Beet Curly Top Virus Control Board Chairman Darryl Bettencourt requests the establishment of a Diagnostics Subcommittee. Chairman Bettencourt nominated Board member Ron Dalforno as Chairman of the Subcommittee. Board member Zach Bagley was nominated to sit on the Subcommittee. External subject matter experts Tom Turini, Vegetable Crops Advisor for University of California Agriculture and Natural Resources; Rebecca Creamer, Professor of Entomology, Plant Pathology, and Weed Science at New Mexico State University; and Carl Strausbaugh, Research Plant Pathologist for United States Department of Agriculture Agricultural Research Service, were also nominated to sit on the Subcommittee. The Subcommittee shall meet a minimum of twice a year, prior to each of the Beet Curly Top Virus Control Board spring and fall meetings. The Board reserves the right to add additional members, as needed. The motion was moved by Zach Bagley, seconded by Ron Dalforno, and passed unanimously.

VOTES:

YES

NO

ABSTENTION

Zach Bagley
Darryl Bettencourt
Mario Caimotto
Ron Dalforno
Joseph Nicholl
Kyle Perez
Jennifer Sanders
Daniel Waterhouse

None

None

PUBLIC COMMENTS ON MATTERS NOT ON THE AGENDA

None.

AGENDA ITEMS FOR FUTURE MEETINGS

Ms. Murphy reminded the board of future meeting dates:

- BCTVCB Financial Subcommittee Meeting: Thursday, October 27, 2022

- BCTVCB Fall Meeting: Thursday, November 10, 2022.

ADJOURN

Mr. Bettencourt adjourned the meeting at 11:50 am.

Lauren Murphy
Secretary to the Board

Beet Curly Top Virus Control Board

November 10, 2022

<u>MEMBER</u>	<u>DISTRICT</u>	
Zach Bagley	Public Member	_____
Darryl Bettencourt	District II	<u>Chairman</u>
Dan Burns	District II	_____
Mario Caimotto	District IV	_____
Ron Dalforno	District IV	_____
Joseph Nicholl	District II	_____
Kyle Perez	District II	_____
Jennifer Sanders	District III	_____
Dan Waterhouse	District II	_____
Vacant Position	District I	_____

CDFA ANNOUNCES VACANCY ON
THE BEET CURLY TOP VIRUS CONTROL PROGRAM ADVISORY BOARD

SACRAMENTO, November 10, 2022 - The California Department of Food and Agriculture (CDFA) Integrated Pest Control Branch is announcing one vacancy on the Beet Curly Top Virus Control Board. This Advisory Board makes recommendations to the CDFA Secretary on all matters pertaining to the Beet Curly Top Virus Control Program.

The term of office for a Board Member is unlimited. The Members receive no compensation, but are entitled to payment of necessary traveling expenses in accordance with the rules of the Department of Personnel Administration. Members are considered public officials and must be willing to comply with necessary disclosure requirements.

The vacancy is for a Southern California District Member, District I; representing beans, peppers, spinach, sugar beets, and/or tomatoes. Individuals interested in being considered for a Board appointment should send a brief resume by March 15, 2023 to

California Department of Food and Agriculture
Integrated Pest Control Branch
2895 N. Larkin Ave, Suite A
Fresno, CA 93727
Attention: Lauren Murphy

For additional information, visit the branch's web page at:
http://www.cdfa.ca.gov/plant/ipc/curlytopvirus/ctv_hp.htm; or contact: Michelle Dennis, Branch Chief of the Integrated Pest Control Branch at (916) 262-1102, by fax (916) 262-2020, or e-mail michelle.dennis@cdfa.ca.gov.



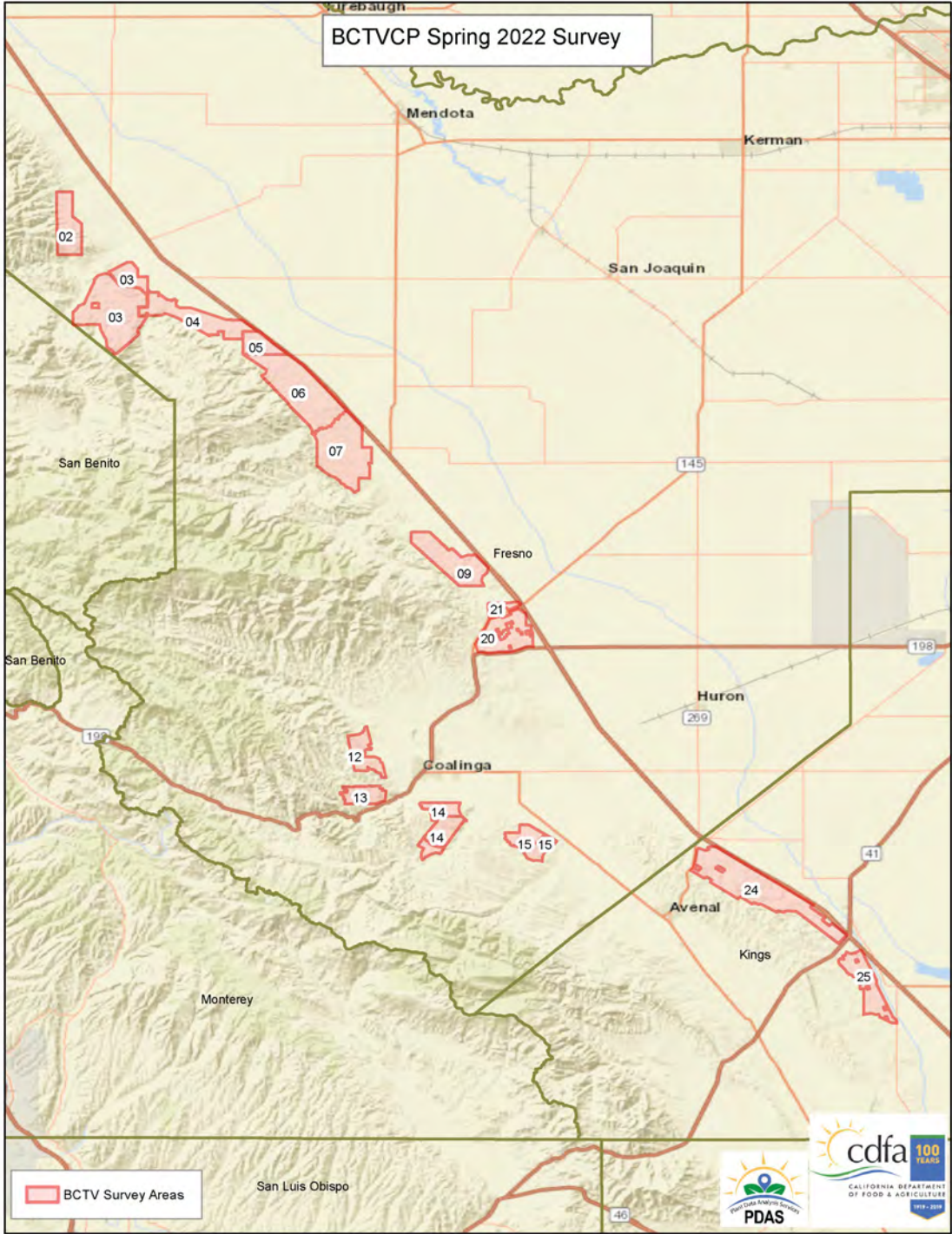
Beet Curly Top Virus Control Program

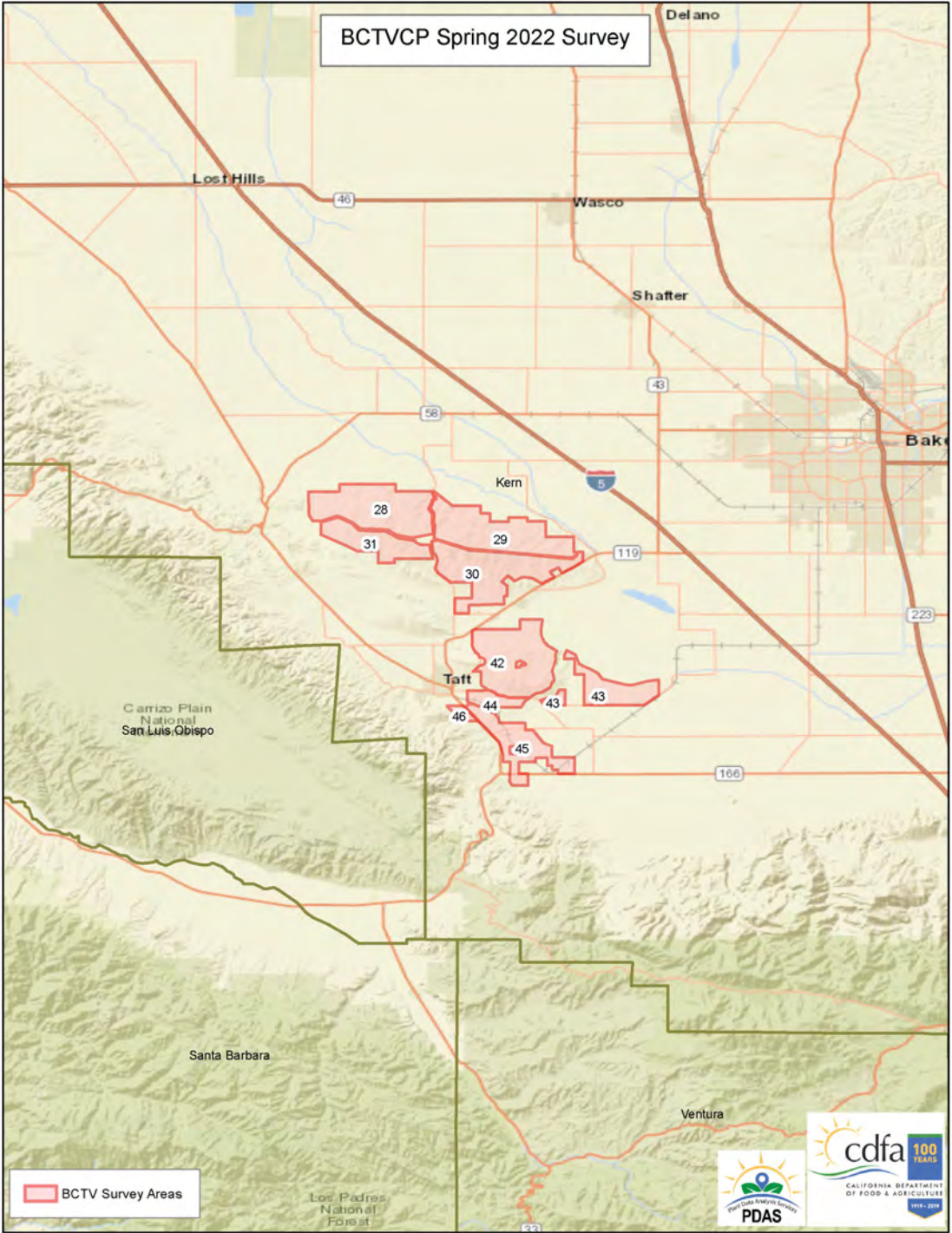
Christopher Dillon, Environmental Scientist
California Department of Food and Agriculture



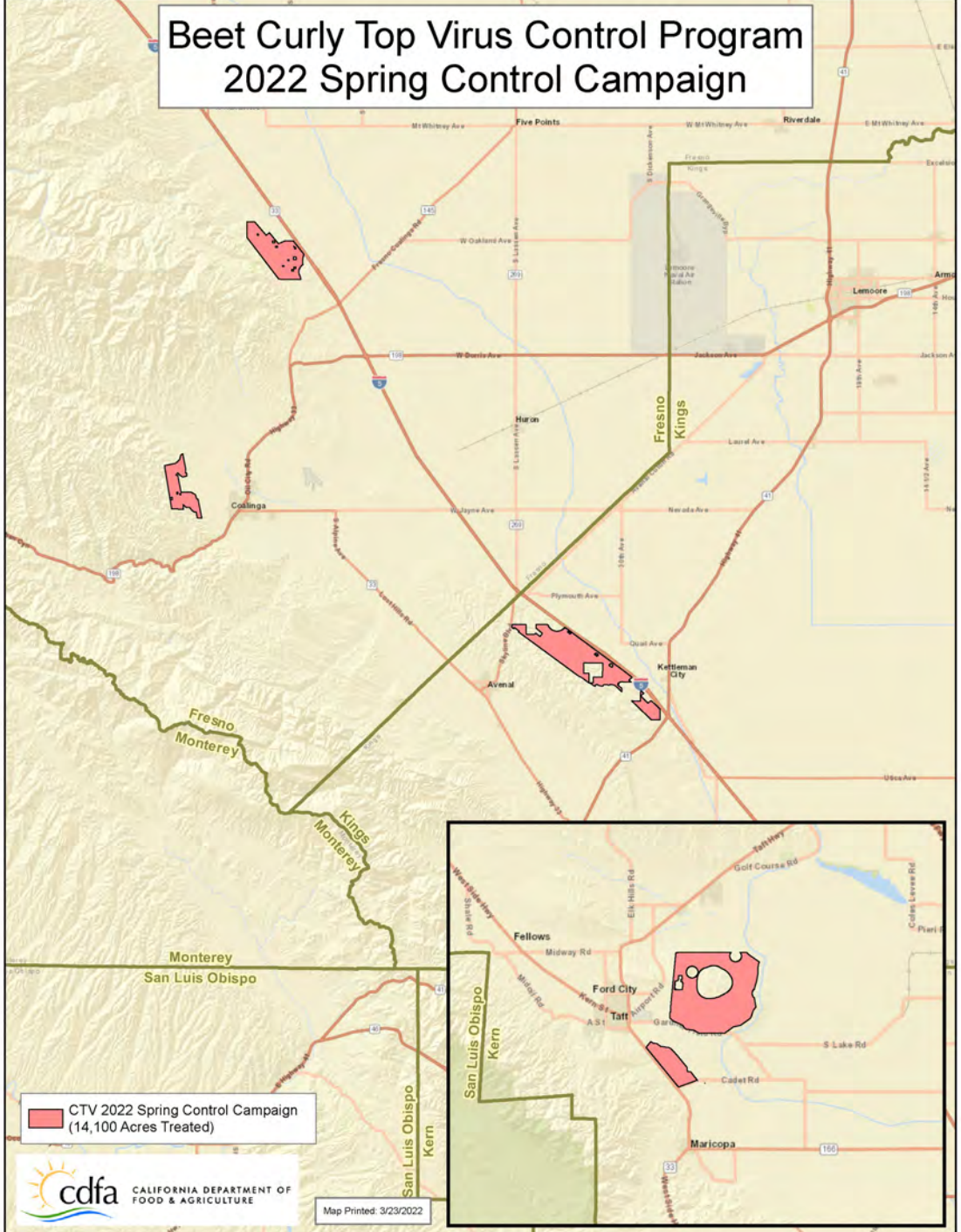
Program Summary – Spring 2022

- Personnel observed an increase in beet leafhopper (BLH) populations in select fallow fields and hillside hotspots in Fresno, Kings, and Kern Counties.
- Control operations were carried out on hillsides in Fresno, Kings, and Kern Counties and on fallow acreage in Kings County, southeast of Coalinga.
- Subsequent control efficacy checks were performed and showed a reduction in BLH populations in these problem areas.
- Vegetation and BLH samples were collected for viral analysis throughout the winter and spring months.
- Overall, BLH counts remained low in most survey areas of Fresno, Kings, and Kern Counties (0-2 BLH per net sweep).

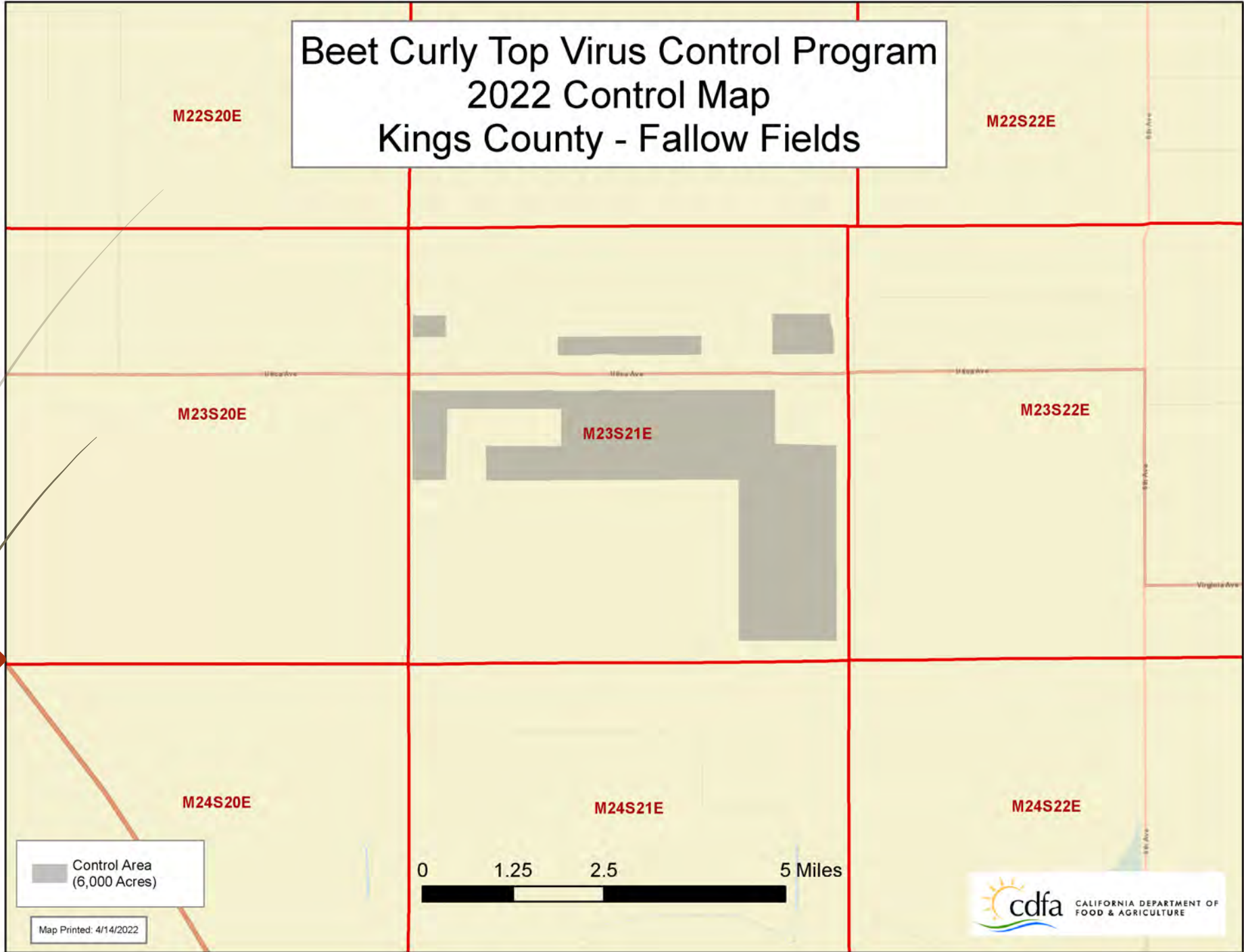




Beet Curly Top Virus Control Program 2022 Spring Control Campaign

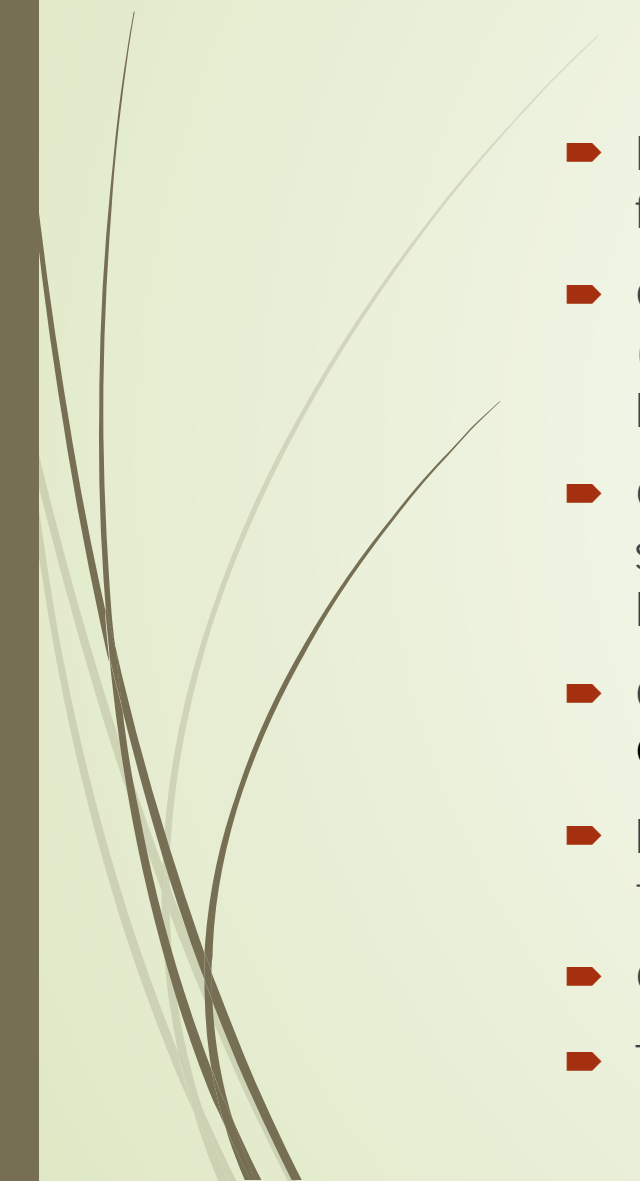


Beet Curly Top Virus Control Program 2022 Control Map Kings County - Fallow Fields

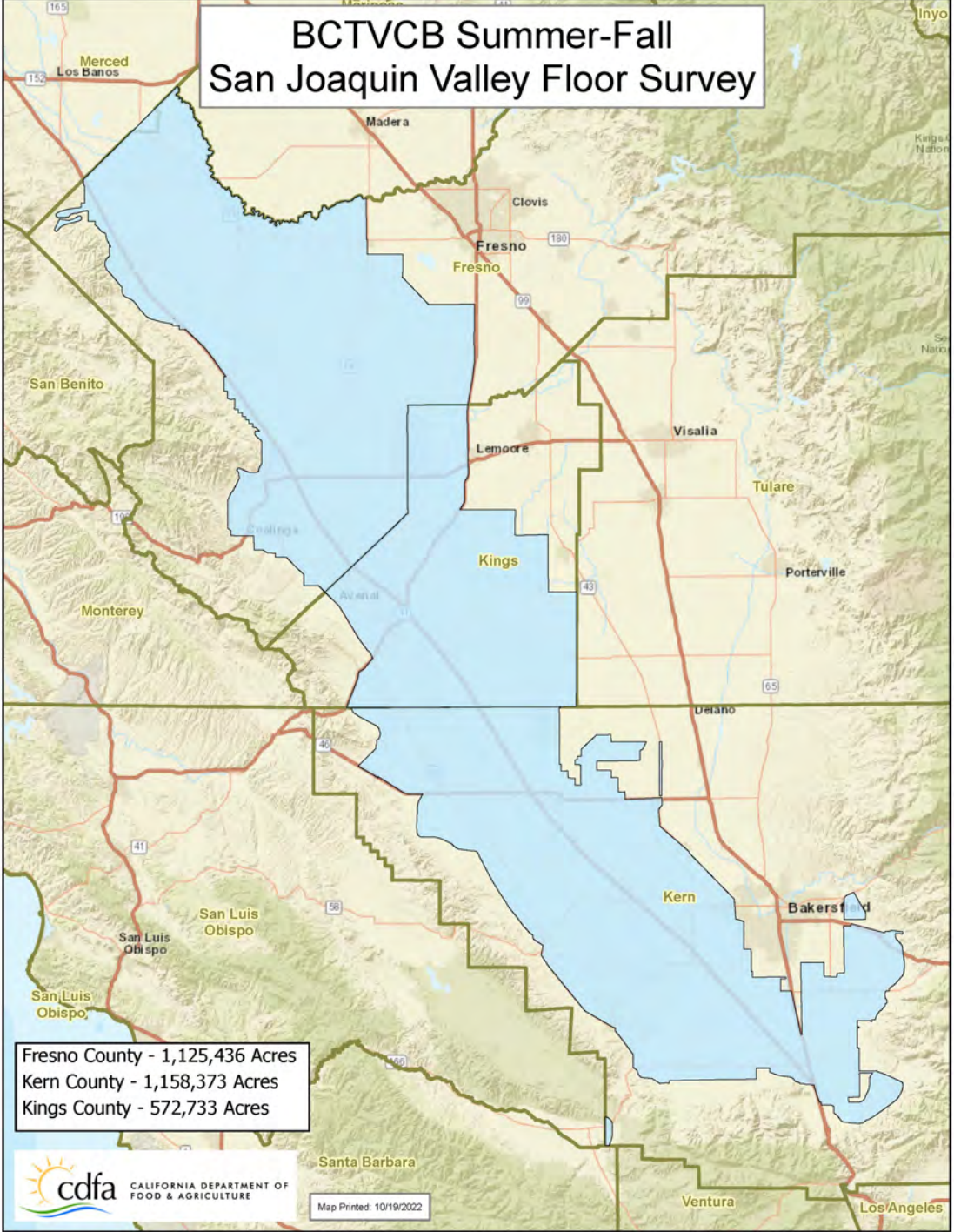




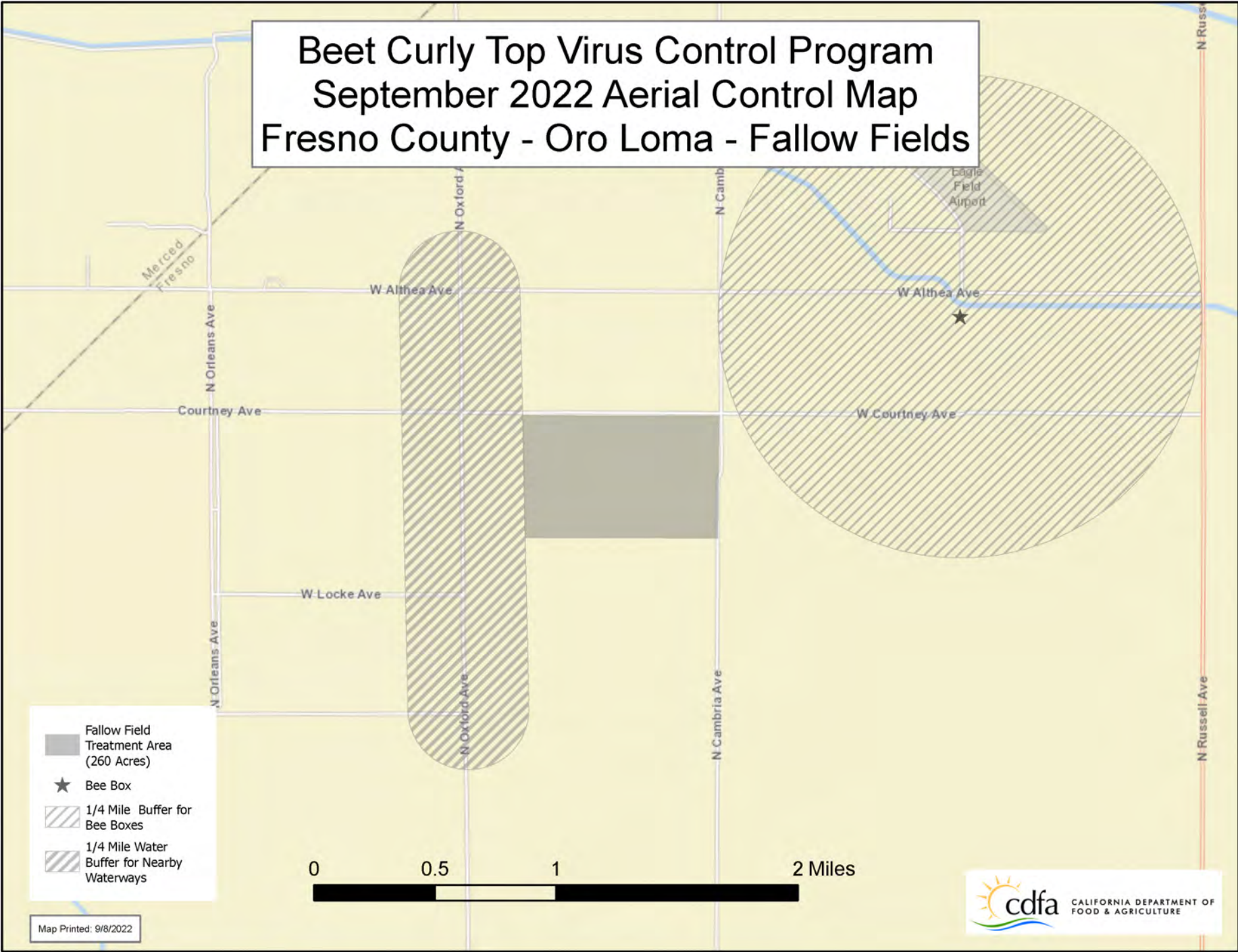
Program Summary – Summer 2022

- 
- Personnel observed an increase in beet leafhopper (BLH) populations in select fallow fields in the San Joaquin Valley.
 - Counts in these fields ranged from 25-30 nymph and adult BLH per net sweep (Oro Loma) and from 50-100 nymph and adult BLH per net sweep (near Firebaugh).
 - Ground and aerial control operations were conducted at both sites and subsequent control efficacy checks were performed and showed a reduction in BLH populations in these problem areas.
 - Overall, BLH counts remained low in most survey areas of Fresno, Kings, and Kern Counties (0-2 BLH per net sweep).
 - Increased late-season commodity damage was observed in northern counties that do not typically experience high beet curly top virus (BCTV) incidence.
 - Grower Alerts were sent out for the months of July and August.
 - The BCTVCP website has been redesigned and is live.

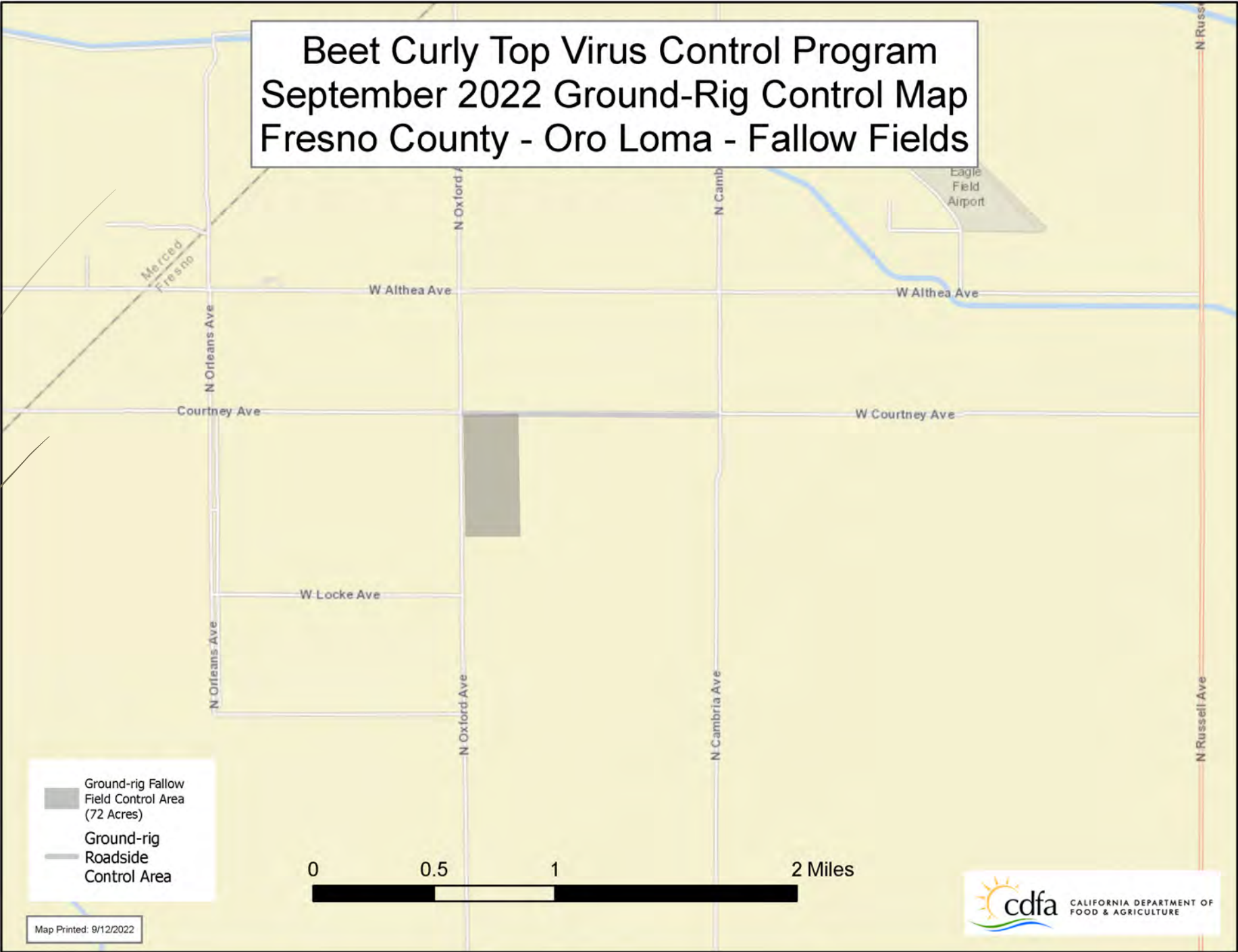
BCTVCB Summer-Fall San Joaquin Valley Floor Survey



Beet Curly Top Virus Control Program September 2022 Aerial Control Map Fresno County - Oro Loma - Fallow Fields



Beet Curly Top Virus Control Program
September 2022 Ground-Rig Control Map
Fresno County - Oro Loma - Fallow Fields





Ongoing Activities – Fall 2022

- Field staff are monitoring fallow fields and roadsides for potential fall control operations.
- Some limited survey activities have been carried out in Merced, Madera, Stanislaus, and San Joaquin Counties.
- The Program continues to collect samples of host vegetation and BLH insect specimens to test for the presence of beet curly top virus (BCTV).
- BLH activity remains very low in surveyed areas (0-1 BLH per sweep), with some activity in a fallow field in Kern County (7-11 BLH per sweep). This area will continue to be monitored for insect development.
- Lack of rainfall has stunted development of host vegetation on the western hillsides.
- Clearing of fallow acreage and roadside vegetation is ongoing throughout the SJV.
- Currently, fall control operations are unlikely.



Control Operations Summary 2022



- ▶ March 18: Fresno County, hillsides aerial control, 4,750 acres
- ▶ March 19: Kern County, hillsides aerial control, 4,100 acres
- ▶ March 22: Kings County, hillsides aerial control, 5,250 acres
- ▶ April 20: Kings County, fallow field aerial control, 6,000 acres
- ▶ July 13: Fresno County, fallow field ground rig control, 80 acres
- ▶ September 14: Fresno county, fallow field aerial control (260 acres) and ground-rig control (160 acres)

- ▶ Total control acreage Fresno County: 5,250 acres
- ▶ Total control acreage Kern County: 4,100 acres
- ▶ Total control acreage Kings County: 11,250 acres
- ▶ **Total control acreage all counties: 20,600 acres**

BCTV Laboratory Results – as of ~~September~~ **October** 2022

	Fresno	Kern	Kings	Merced	Madera
Positive BLH	30	8	39	0	0
Negative BLH	11	16	67	0	0
Positive Host Plant	2	1	1	0	0
Negative Host Plant	90	24	21	1	0
Positive Tomato	52	29	15	19	8
Negative Tomato	34	2	11	5	0



BCTV Laboratory Results – as of ~~September~~ October 2022

	Colusa	Monterrey	San Joaquin	Yolo	Stanislaus	Tulare	Imperial
Positive BLH	0	0	0	0	0	0	3
Negative BLH	1	1	0	0	0	0	1
Positive Host Plant	0	0	0	0	0	0	1
Negative Host Plant	0	6	0	0	0	0	0
Positive Tomato	7	0	9	3	27	3	2 (sugar beet)
Negative Tomato	3	0	0	0	1	0	4 (sugar beet)

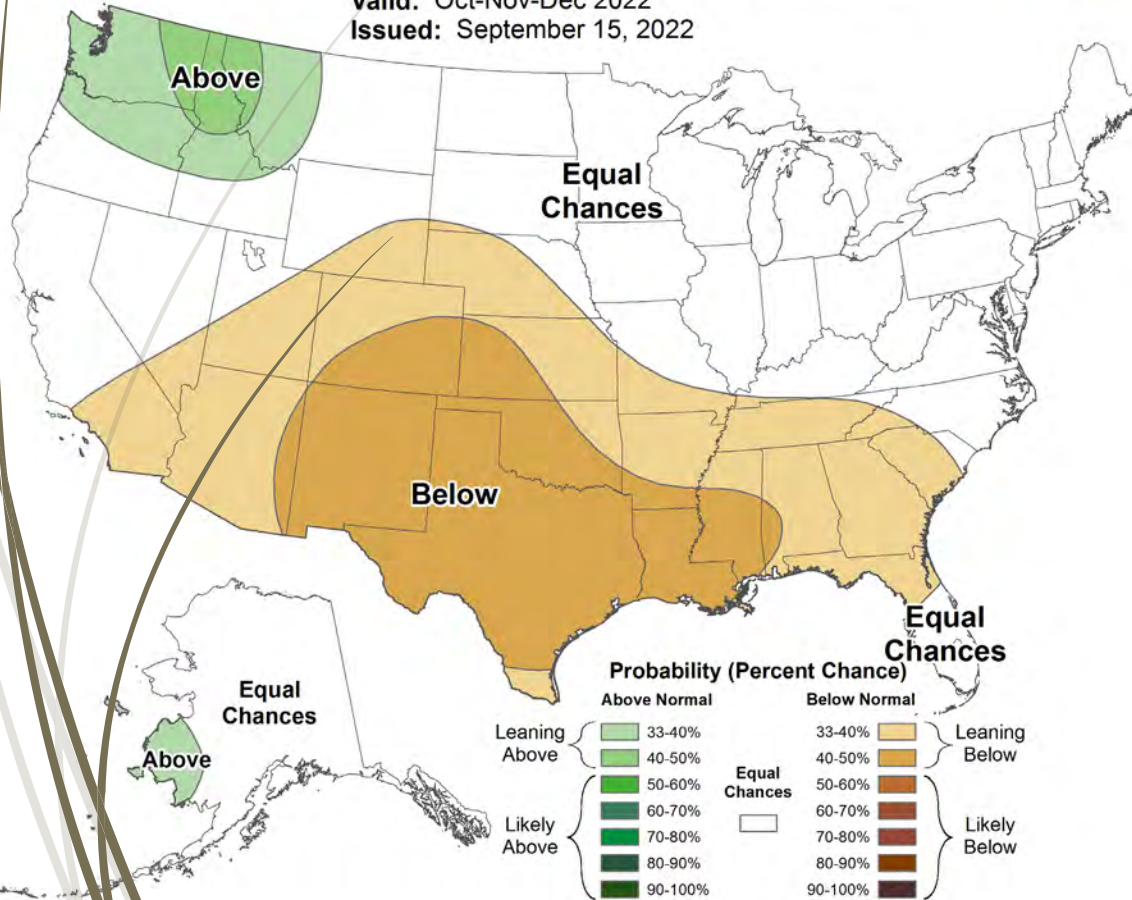


Fall Weather Outlooks



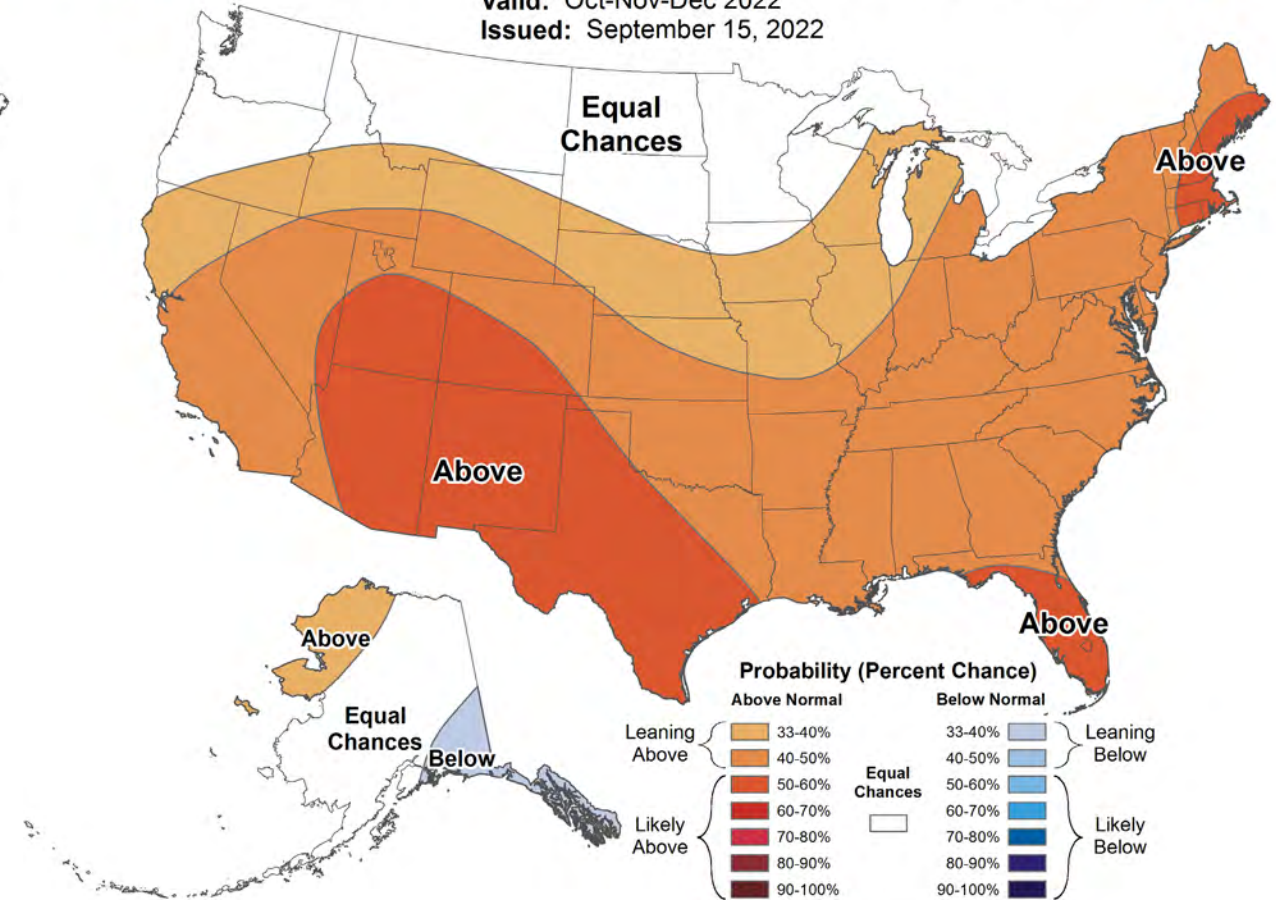
Seasonal Precipitation Outlook

Valid: Oct-Nov-Dec 2022
Issued: September 15, 2022



Seasonal Temperature Outlook

Valid: Oct-Nov-Dec 2022
Issued: September 15, 2022





Program Contact



Christopher Dillon

Environmental Scientist

California Department of Food and Agriculture

Beet Curly Top Virus Control Program

christopher.dillon@cdfa.ca.gov

(916) 823-1169

Acres Sprayed by Calendar Year 2008-2022
BEET CURLY TOP VIRUS CONTROL PROGRAM

	SAN JOAQUIN & COASTAL VALLEYS						IMPERIAL /PALO VERDE VALLEYS (Riverside/Imperial Co.)					
Calendar Year	WINTER		SPRING		FALL		All Seasons		YEARLY TOTALS		TOTAL ACRES SPRAYED	Acres Treated on BLM Lands
	Air	Ground	Air	Ground	Air	Ground	Air	Ground	Air	Ground		
2022	0	0	20,100	80	260	160	0	0	20,360	240	20,600	2,314
2021	0	0	6,170	1,520	0	0	0	0	6,170	1,520	7,690	158
2020	0	0	23,025	720	0	0	0	0	23,025	720	23,745	1,226
2019	0	0	9,875	1,320	2,250	0	0	0	12,125	1,320	13,445	944
2018	0	0	5,900	500	0	0	0	0	5,900	500	6,400	798
2017	0	0	4,000	960	0	320	0	0	4,000	1,280	5,280	1,207
2016	0	0	64,450	1,432	0	0	0	0	64,450	1,432	65,882	11,937
2015	13,000	0	71,925	4,320	0	0	0	0	84,925	4,320	89,245	12,876
2014	0	0	26,705	4,925	17,325	0	0	0	44,030	4,925	48,955	3,066
2013	0	0	38,950	2,220	10,100	1,060	0	0	49,050	3,280	52,330	8,203
2012	0	0	0	935	23,800	0	0	0	23,800	935	24,735	507
2011	0	0	8,450	290	4,730	80	0	240	13,180	610	13,790	4,331
2010	0	0	31,070	480	14,100	0	0	1,200	45,170	1,680	46,850	4,882
2009	0	0	34,995	400	7,200	0	0	960	42,195	1,360	43,555	4,847
2008*	0	0	0	0	0	0	0	0	0	0	0	0
AVERAGE	929	0	24,687	1,436	5,698	116	0	171	31,313	1,723	33,036	4,093

15-Year Average

* No treatments were performed in 2008. 2008 not computed in average.

BUDGET FY2022/2023

BEET CURLY TOP VIRUS CONTROL PROGRAM

OBJECT DESCRIPTION	BOARD APPROVED 2022/2023	FY 2022/2023 Year-to-Date Expenditures as of October 2022*	Available Balance	BOARD PROPOSED BUDGET 2023/2024	Budget Comments	BOARD PROPOSED BUDGET 2023/2024 with Staff Increase
Permanent Salaries	\$500,000	\$132,879	\$367,121	\$500,000	[11]	\$959,024
Temporary Salaries	\$150,000	\$5,284	\$144,716	\$150,000	[2]	\$150,000
Overtime/Other Pay		\$2,801	\$2,801			
Staff Benefits	\$300,000	\$61,360	\$238,640	\$300,000	[3]	\$566,234
Recovery		-\$103,336	\$103,336			
Unemployment and Worker's Comp	\$30,000	\$3,735	\$26,265	\$30,000	PA	\$30,000
TOTAL PERSONNEL SERVICES	\$980,000	\$102,723	\$877,277	\$980,000		\$1,705,258
General Expense	\$15,000	\$0	\$15,000	\$15,000	PA	\$15,000
Printing	\$300	\$0	\$300	\$300	PA	\$300
Communications	\$10,000	\$3,956	\$6,044	\$10,000	PA	\$10,000
Postage	\$2,000	\$506	\$1,494	\$2,000	PA	\$2,000
Insurance	\$10,000	\$0	\$10,000	\$10,000	PA	\$10,000
Travel In-State	\$9,000	\$802	\$8,198	\$9,000	PA	\$9,000
Travel Out-State	\$5,000	\$971	\$4,029	\$5,000	[4]	\$5,000
Training	\$2,500	\$200	\$2,300	\$2,500	PA	\$2,500
Facilities Operations	\$60,000	-\$3,464	\$63,464	\$60,000	PA	\$60,000
Utilities	\$15,000	\$6,975	\$8,025	\$15,000	PA	\$15,000
Consult/Pro Interdept'l						
Consult/Pro Svcs-External						
Direct Chrg-Dept Services	\$5,000	\$2,556	\$2,444	\$5,000	PA	\$5,000
ADMINISTRATIVE CHARGES:					[5]	
Indirect Costs Exec/Admin		\$56,044				
Indirect Costs-Division	\$250,000	\$12,157	\$181,799	\$250,000	PA	\$250,000
Indirect Legal			\$0			
Information Technology Direct & Indirect	\$110,000	\$28,048	\$81,952	\$110,000	PA	\$110,000
Central Adm. Services (Pro-rata)		\$0	\$0			
Equipment	\$0	\$0	\$0	\$0		\$0
OTHER ITEMS OF EXPENSE:						
Clothing & Personal Supplies	\$0	\$0	\$0	\$0		\$0
Misc Ag Services/Rentals (Aircraft)	\$300,000	\$54,855	\$245,145	\$400,000	[6]	\$400,000
Vehicle Purchase	\$60,000	\$0	\$60,000	\$60,000		\$60,000
Ag Supplies (Field Expenses)	\$1,000	\$1,543	-\$543	\$5,000	PA	\$5,000
Chem/Drugs/Lab Supplies	\$2,000	\$0	\$2,000	\$2,000	PA	\$2,000
Vehicle Operations	\$45,000	\$17,647	\$27,353	\$45,000	PA	\$45,000
Interest Penalties	\$0	\$0	\$0	\$0		\$0
Pesticide Purchases	\$200,000	\$0	\$200,000	\$0		\$0
Research Contracts/Univ	\$96,794	\$0	\$96,794	\$90,000		\$90,000
Total Other Items of Expense	\$704,794	\$74,046	\$630,748	\$602,000		\$602,000
OE&E Budget Adjustments	\$0	\$0		\$0		\$0
TOTAL OE&E	\$1,198,594	\$182,796	\$1,015,798	\$1,095,800		\$1,095,800
TOTAL PROGRAM	\$2,178,594	\$285,519	\$1,893,075	\$2,075,800		\$2,801,058
Agriculture Fund	\$2,178,594	\$285,519	\$1,893,075	\$2,075,800		\$2,801,058
Unclaimed Gas Tax Funds						
TOTAL =	\$2,178,594	\$285,519	\$1,893,075	\$2,075,800		\$2,801,058

Budget Comments

BEET CURLY TOP VIRUS CONTROL PROGRAM

PA = estimate based on past actual expenditures

- [1] Permanent Salaries:** Based on FY 21/22 projections.
- [2] Temp Help Salaries:** Based on FY 21/22 projections.
- [3] Staff Benefits:** Based on FY 21/22 projections.
- [4] Travel Out-State:** Place holder for annual Curly Top Virus Conference travel
- [5] ADMIN Charges:** From Budget Office-Past Actual
- [6] Aerial Contract:** New Aerial Contract in effect as of August 15, 2021; Contract allows for \$495,000 annually.
*Pesticide is included in new aerial contract.

ACTUAL BUDGET EXPENDITURES

Beet Curly Top Virus Control Program

FY 2018/2019 - FY 2022/2023

OBJECT DESCRIPTION	2018/2019 Fiscal Year	2019/2020 Fiscal Year	2020/2021* Fiscal Year	2021/2022* Fiscal Year	2022/2023* Fiscal Year
Permanent Salaries	\$683,809	\$741,164	\$499,194	\$515,745	\$132,879
Temporary Salaries	\$140,997	\$75,285	\$73,356	\$14,239	\$5,284
Overtime and other pay	\$5,073	\$332	\$26	\$0	\$2,801
Salary/Wage & Benefit Recovery	-\$394,436	-\$306,969	-\$126,438	-\$53,870	-\$103,336
Staff Benefits	\$457,915	\$261,216	\$228,965	\$218,741	\$61,360
Unemployment and Worker's Comp	\$28,109	\$33,626	\$14,804	\$10,468	\$3,735
TOTAL PERSONNEL SERVICES	\$921,466	\$804,654	\$689,908	\$705,323	\$102,723
General Expense	\$5,195	\$2,906	\$3,314	\$6,492	\$0
Printing	\$0	\$0	\$0	\$2,970	\$0
Communications	\$3,350	\$6,542	\$6,798	\$7,289	\$3,956
Postage	\$2,082	\$354	\$655	\$2,542	\$506
Insurance	\$9,954	\$9,002	\$7,056	\$10,399	\$0
Travel In-State	\$6,237	\$7,108	\$1,372	\$5,449	\$802
Travel Out-of-State	\$233	\$0	\$0	\$0	\$971
Training	\$1,420	\$555	\$2,140	\$1,940	\$200
Facilities Operations	\$60,343	\$62,982	\$60,054	\$72,649	-\$3,464
Utilities	\$10,173	\$10,987	\$13,303	\$15,441	\$6,975
Consult/Pro Interdept'l	\$0	\$0	\$0	\$0	\$0
Consult/Pro Svcs-External	\$0	\$0	\$0	\$0	\$0
Direct Chrg-Dept Services	\$4,678	\$3,526	\$4,561	\$1,046	\$2,556
ADMINISTRATIVE CHARGES:					
Department Indirect Exec/Adm	\$125,166	\$134,781	\$127,487	\$91,158	\$56,044
Division Indirect	\$70,630	\$79,614	\$75,287	\$72,673	\$12,157
Legal Indirect	\$744	\$0	\$0	\$0	\$0
Information Technology (Direct and Indirect)	\$108,660	\$141,200	\$124,083	\$165,674	\$28,048
State Admn Services-Pro-rata	\$2,704	\$0	\$0	\$0	\$0
Equipment	\$0	\$0	\$0	\$0	\$0
OTHER ITEMS OF EXPENSE:					
Clothing & Personal Supplies	\$0	\$0	\$0	\$0	\$0
Misc Ag Services/Rentals (airplane)	\$49,869	\$88,140	\$65,402	\$123,361	\$54,855
Ag Supplies (Field Expenses)	\$941	\$1,763	\$3,900	\$7,188	\$1,543
Chem/Drugs/Lab Supplies	\$3,760	\$0	\$1,770	\$172	\$0
Interest Penalties	\$0	\$0	\$0	\$0	\$0
Vehicle Operations	\$43,831	\$26,683	\$27,431	\$53,126	\$17,647
Pesticide Purchase	\$60,192	\$63,936	\$74,899	\$0	\$0
Research Contracts/Univ	\$0	\$0	\$0	\$0	\$0
TOTAL OTHER ITEMS OF EXPENSE	\$158,593	\$180,522	\$173,402	\$183,848	\$74,045
OE&E Budget Adjustments					
TOTAL OE&E	\$570,162	\$640,078	\$599,512	\$639,571	\$182,796
TOTAL BCTVCP EXPENDITURES	\$1,491,628	\$1,444,731	\$1,289,420	\$1,344,894	\$285,519
Fund Sources and Contributions:					
Unclaimed Gas Tax Funds	\$26,584	\$74,286	\$61,421	\$61,421	\$0
Required from Agriculture Fund	\$1,465,044	\$1,370,445	\$1,227,999	\$1,283,473	\$285,519
BCTVC Program Expenditures vs Proposed Budget:					
Total BCTVCP Expenditures =	\$1,491,628	\$1,444,731	\$1,289,420	\$1,344,894	\$285,519
BCTVC Board Approved BUDGET=	\$2,600,245	\$2,219,242	\$2,134,100	\$2,171,714	\$2,178,594
DIFFERENCE =	\$1,108,617	\$774,511	\$844,680	\$826,820	\$1,893,075

*Not Final

RECEIVED and PROJECTED REVENUE by MONTH (FY 22/23)
Monthly Interest Included In Each Month
Beet Curly Top Virus Control Program

<i>Actual Revenue Received</i>	<i>Actual Revenue Received</i>	TOTAL RECEIVED/ PROJECTED REVENUE Current Fiscal Year 2022/2023
	July 2022 - June 2023	
	Revenue	
	July \$25,356	\$25,356
	August \$809,184	\$809,184
	September \$80,393	\$80,393
	October \$664,795	\$664,795
	November	\$124,108
	December	\$16,003
	January	\$6,481
	February	\$533
	March	\$526
	April	\$667
	May	\$17,841
	June	\$81,638
Total	\$1,970,220	\$1,579,728
		\$1,827,526

FY 2021/2022 Revenues Received (from Tomatoes) Compared with 2021 PTAB Reported Tonnages

District	FY21 Tomato Tonnage Reported through Received Assessments	FY21 Revenues Received through Tomato Assessments	2021 PTAB Reported Tonnages	2021 Expected Revenues from Processing Tomatoes Based on PTAB Tonnages and Current Assessment Rates
1	7,275	\$3,586.54	6,999	\$3,450.51
2	4,671,987	\$1,079,228.79	7,045,626	\$1,627,539.61
3	3,261,614	\$114,156.49	3,507,249	\$122,753.72
4	228,840	\$26,545.46	200,647	\$23,275.05
Unknown	Unknown	\$577,805.36		
TOTAL	8,169,716	\$1,801,322.64	10,760,521	\$1,777,018.88

**Department of Food and Agriculture
Fund Condition Statement
Beet Curly Top Virus Control Program
October 14, 2022**

Bank of the West (B of W) Funds

	<i>Actual</i> <i>2021/22</i>	<i>Projected</i> <i>2022/23</i>	<i>Projected</i> <i>2023/24</i>	<i>Projected</i> <i>2024/25</i>	<i>Projected</i> <i>2025/26</i>
B of W BEGINNING BALANCE	1,144,564	1,912,293	2,213,852	2,615,411	3,016,970
Revenues deposited into B of W	1,974,403	2,000,000	2,100,000	2,100,000	2,100,000
Funds transferred to CDFA Account	-1,208,233	-1,700,000	-1,700,000	-1,700,000	-1,700,000
Money Market Account	743,815	743,815	743,815	743,815	743,815
Penalties	0	0	0	0	0
Bank Charges	0	0	0	0	0
Interest*	1,559	1,559	1,559	1,559	1,559
TOTAL B of W RESERVE	1,912,293	2,213,852	2,615,411	3,016,970	3,418,529

CDFA Fund Condition

	<i>Actual</i> <i>2021/22</i>	<i>Projected</i> <i>2022/23</i>	<i>Projected</i> <i>2023/24</i>	<i>Projected</i> <i>2024/25</i>	<i>Projected</i> <i>2025/26</i>
CDFA BEGINNING BALANCE	1,764,888	1,067,061	931,111	794,273	667,292
Prior Year Adjustments	-491,200				
Adjusted Balance	1,273,688	1,067,061	931,111	794,273	667,292
REVENUE:					
Transfer from B of W	1,208,233	1,700,000	1,700,000	1,700,000	1,700,000
SMIF Interest **	11,542	6,979	6,089	5,195	4,364
Interest from Loan					
Sale of Fixed Assets					
TOTAL REVENUE	1,219,775	1,706,979	1,706,091	1,705,199	1,704,368
TOTAL RESOURCES	2,493,463	2,774,040	2,637,202	2,499,472	2,371,660
EXPENDITURES:					
Paid in current year	1,283,473	1,700,000	1,700,000	1,700,000	1,700,000
Pro Rata (SB 836)	96,959	96,959	96,959	96,959	96,959
Pension Payment (SB 84)	45,970	45,970	45,970	35,221	35,221
Revenue transfer					
TOTAL EXPENDITURES	1,426,402	1,842,929	1,842,929	1,832,180	1,832,180
CDFA RESERVE	1,067,061	931,111	794,273	667,292	539,480

Combined Reserves

	<i>Actual</i> <i>2021/22</i>	<i>Projected</i> <i>2022/23</i>	<i>Projected</i> <i>2023/24</i>	<i>Projected</i> <i>2024/25</i>	<i>Projected</i> <i>2025/26</i>
TOTAL B of W RESERVE	1,912,293	2,213,852	2,615,411	3,016,970	3,418,529
CDFA RESERVE	1,067,061	931,111	794,273	667,292	539,480
TOTAL PROGRAM RESERVE	2,979,354	3,144,963	3,409,684	3,684,262	3,958,009

**SMIF Interest rate updated as of 6/30/22.

BEET CURLY TOP VIRUS CONTROL BOARD FUND AGREEMENT

As authorized by Food and Agricultural Code Section 227, the Beet Curly Top Virus Control Board (BCTVCB) has chosen to designate the Dreyfus Money Market account within Bank of the West as its depository for BCTVCB funds. The BCTVCB also authorizes the Secretary of the California Department of Food and Agriculture (CDFA) to establish an account for the **Beet Curly Top Virus Control** funds.

In order to comply with Section 227, the funds in the bank account shall be used exclusively to reimburse the Beet Curly Top Virus Control Program (Program) for Program operation expenses incurred.

Financial Services Branch will notify Dreyfus Money Market account within Bank of the West to transfer funds from the **Beet Curly Top Virus Control** Account # [REDACTED] to the **CDFA** General Checking Account # [REDACTED] on the following dates:

January 15, 2023	\$181,550.00
February 15, 2023	\$181,550.00
March 15, 2023	\$181,550.00
April 15, 2023	\$181,550.00
May 15, 2023	\$181,550.00
June 15, 2023	\$181,550.00

Funds deposited into the Dreyfus Money Market account within Bank of the West account will be audited at least every two (2) years by an auditor selected by the Program. The auditor shall provide the Program with a copy of the audit report within thirty (30) days of completion thereof.

Program expenses are those expenses incurred in implementing the **Beet Curly Top Virus Control** budget, as shown in the above schedule, and are paid from funds collected as industry fees.

The **Beet Curly Top Virus Control** account must maintain a balance sufficient to pay for expenses arising from unanticipated occurrences with the administration of the Program.

This agreement may only be changed by action of the Secretary or her designee.

The Program shall establish and maintain adequate reserves to fund the Program phase-out upon termination of CDFA's administration of the Program.

CERTIFICATION

The undersigned certifies as follows:

Pursuant to the authority duly delegated to me by the Secretary of the California Department of Food and Agriculture, in my official capacity as Director of Plant Health & Pest Prevention Services for the Department, I certify that the foregoing agreement is in full force and effect and has not been revoked or amended and does not exceed the objectives or powers of the Beet Curly Top Virus Control Board.

In witness whereof, I have executed this Certification on _____, 2022.

CALIFORNIA DEPARTMENT OF FOOD
AND AGRICULTURE

Mark A. McLoughlin, Director of Plant
Health & Pest Prevention Services

Pursuant to the authority duly delegated to me by the Secretary of the California Department of Food and Agriculture, in my official capacity as Director of Administrative Services for the Department, I certify that the foregoing agreement is in full force and effect and has not been revoked or amended and does not exceed the objectives or powers of the Beet Curly Top Virus Control Board.

In witness whereof, I have executed this Certification on _____, 2022.

CALIFORNIA DEPARTMENT OF FOOD
AND AGRICULTURE

Jody Lusby, Director of Administrative Services



Samples

Service vs Regulatory vs Research

Service Samples – Not part of CTV Program

- If this is purely for grower sampling and individual grower information
 - no need to consider this information as part of the Curly Top Virus Control Program.
- Growers are welcome to submit service samples to assist them with their farming practice to any laboratory of their choosing, including the CDFA laboratory.
- When submitted, these samples will be prioritized accordingly, there is a fee schedule for this service, and they are free to use the resulting data as they please.

Regulatory Samples

Justification for treatment

- State samples taken for the furtherance of data collection and to adjust or make recommendations to a state regulatory program or action.
- Considerations would be taken into account such as:
 - who would be taking the samples,
 - when/where they would be submitted,
 - authority was for utilizing these samples to make regulatory decisions
 - privacy concerns with data sharing.

Research Samples

- Samples for the purposes of knowledge gathering
- A cooperative partnership between the state and industry to assist in determination of the path forward as we continue to explore alternatives in how we conduct a comprehensive statewide program, as well as monitoring populations of pest/disease hot spots and migration patterns from the foothills into the agricultural areas
- A program lead project will allow the program to utilize multiple laboratories and partnerships to accomplish
- An external grant will have a more limited ability to adjust or change

Crops	Will the plant support a BLH life cycle	Is the crop a good host for BCTV	Preferred Beet leafhopper Host Plant	Stage of plant development when susceptible to BCTV infection	Recent Observed Natural Infection in Field	Susceptibility Factor	Justification
Tomato (Fresh Market)	No	Yes	No	All Stages	Every Season	(1) Very High	Tomatoes reported in literature to have the lowest resistance to BCTV, there are some sugar beet varieties but beets are a preferred BLH host and a significant San Joaquin Valley reservoir for BCTV
Tomato (Processing)	No	Yes	No	All Stages	Every Season		
Sugar beets	Yes	Yes	Yes	All Stages	Every Season		
Peppers	No	Yes	No	Symptoms prior to 8-leaf stage	Bell Peppers, Some Years	(0.320) Moderate	less damage to stand after late infection but have observed infection in field
Beans Green Snap	No	Young stages	No	Symptoms when there is early to mid infection	None	(0.160) Moderate Low	Snap beans were reported to be 2 to 7 times more susceptible than dry beans in literature observed from natural infection. There are BCTV resistant varieties
Beans Green Lima	No	Young Stages	No	Symptoms when there is early to mid infection	None	(0.117) Low	Dry beans reported in literature to be more resistant than green snap varieties. There are BCTV resistant varieties.
Beans (dry)	No		No	Symptoms when there is early to mid infection	None		
Muskmelon, Green Weight	No		No	Symptoms when there is infected prior to the 6 to 8-leaf stage	None		Several significant incidences of natural infection and loss found in literature. Death or BCTV symptoms reported when infected at cotyledon state or in 2-4 leaf stage. Varieties show varying resistance to BCTV. Natural infection not seen in recent years.
Muskmelon, Vine Seed	No		No				
Cucumber, Green Weight	Yes		No	Symptoms when there is early infection	None		
Cucumber, Vine Seed	Yes		No				
Squash, Green Weight	?		No	Symptoms and death when infection occurs in very early stage of growth	None		
Squash, Vine Seed	?		No				
Spinach	Yes	Very Young Stages	No	Death and BCTV symptoms when there is infected prior to 4-leaf stage	None	(0.067) Very Low	Few natural infections reported in literature for this group. Natural infection not seen in many years.
Watermelon, Green Weight	No		No	Early only	None		
Watermelon, Vine Seed	No		No	Early only	None		
Pumpkin, Green Weight	?		No	?	None		
Pumpkin, Vine Seed	?		No	?	None		