

California Quarantines

Exotic pests pose a threat to agriculture in both San Bernardino County and across California. On average, a new pest is introduced into California every 60 days. Each year, these insects and diseases cost our state's agricultural industry approximately \$3 billion in crop losses, export losses due to new quarantine restrictions, and pest control / eradication costs.

Please Help Keep California Pest Free!



“Kiwi” inspecting unmarked parcels for agricultural products.

California Agriculture

California is the top agricultural producer in the United States. Our State produces over 400 different commodities, which account for about half of the US grown fruit, nuts, and vegetables. Many specialty crops are only grown in California! Some of the fruits and vegetables you may have eaten today, either fresh or in a processed product, likely originated from California.



For more information, please contact:

San Bernardino County Dept. of
Agriculture / Weights & Measures
777 East Rialto Ave,
San Bernardino, CA 92415-0720

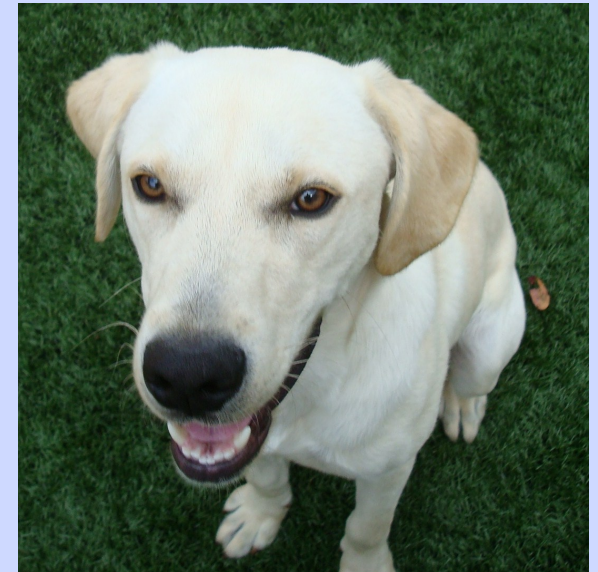
(909) 387-2105

<http://www.sbcounty.gov/awm>

The items below were removed from your package due to quarantine violations:

San Bernardino County
Department of
Agriculture / Weights
& Measures

Pest Exclusion
Canine Parcel
Inspection Team



(800) 734-9459



County of San Bernardino - Pest Exclusion Canine Parcel Inspection Team

San Bernardino County's Quarantine Exclusion Program

San Bernardino County has two detector dog teams inspecting packages at parcel delivery facilities like FedEx and UPS. When potentially illegal agricultural products are sent to California in un-marked packages, the only way we can find out whether they contain agricultural products is to employ a powerful nose.

Our detector canines, "Bishop" and "Kiwi" are animal shelter rescues. They are trained to inspect parcels and to detect the presence of agricultural products.

The dogs will scratch at parcels to alert our dog handler officers that the package contains agricultural products. The package is then opened and inspected to determine if the agricultural products inside are allowed entry into California.

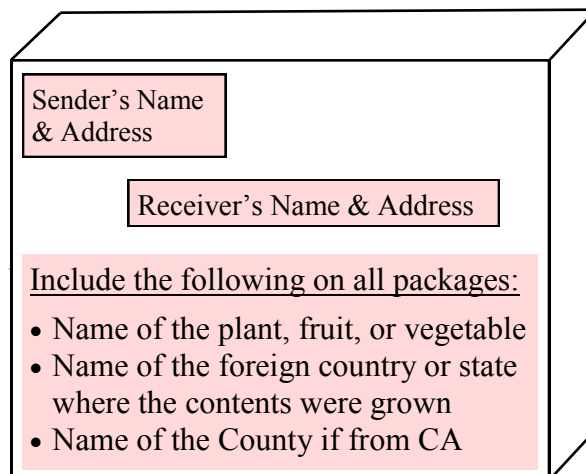


"Bishop" inspecting unmarked parcels for agricultural products.

Why was my parcel rejected?

Packages of agricultural products (plants, seeds, fruits, vegetables, cut flowers, certain animals, etc.) can harbor insects, diseases, invasive weeds, or can pose a threat to California's agriculture and native plants and animals. Your package could have been rejected for several reasons:

- 1) We detected a live pest, plant material with disease symptoms, or an illegal animal.
- 2) The shipment had the potential to carry a disease or harmful organism and did not have the required documentation or certificates to enter California.
- 3) The package did not have the required markings on the outside of the package identifying the name of the plant, fruit, or vegetable, and the location where the contents were grown (including the name of the County if grown in California).



What happens when my package is rejected?

If an agricultural product is rejected at a freight or mail facility, a Notice of Rejection is mailed to both the sender and receiver.

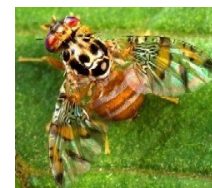
Even if you receive a Notice of Rejection only for "Markings", we still may have opened your package and inspected the agricultural products. If no pests are found, and this is your first violation, your package may be released to its destination.

Rejected packages are usually destroyed or, in some cases, may be allowed to be returned to the shipper at their own expense.

HOW YOU CAN HELP !

Please DO NOT send any "backyard" grown fruit or vegetables!

Fruit flies can lay their eggs inside fruit and vegetables and even though the fruit looks good on the outside, it could have an egg or maggot inside the fruit hitchhiking to California!



Quarantines vary from state to state so if you want to receive out-of-state plant products of any kind, please check California's quarantines to see if the products you want can enter. You can either call your County Agricultural Dept. or you can visit the California Department of Food and Agriculture website at:

<http://www.cdffa.ca.gov/plant/>