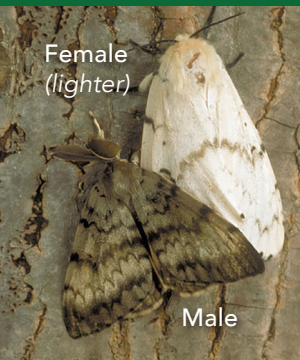


# ATTEND AN ONLINE INFORMATIONAL PUBLIC MEETING



The California Department of Food and Agriculture (CDFA) and the Los Angeles County Agricultural Commissioner have detected the **spongy moth** (SM), formerly known as gypsy moth, in your immediate neighborhood. This invasive species attacks a wide range of trees, including oaks, hardwoods, evergreens, cottonwood, willow, and others. When trees are repeatedly defoliated, they become more susceptible to other invasive species and disease, increasing potential for tree death, fire, and erosion.

**What is being done?** When spongy moths are detected in a new area, agricultural officials place additional traps to determine the extent of the infestation. The CDFA will conduct an extensive survey in the fall for evidence of egg masses, pupal cases, and moths. Staff will be in your neighborhood conducting visual inspections of trees, outdoor items, recreational vehicles, the bases of homes and fences, wood piles, and any item where an egg mass might be deposited.



Egg masses are laid in the summer and look like light brown felt. They can be laid on any kind of surface.

Have you traveled to these infested areas?



**How can I help?** Your cooperation with this program is critical. Please call our toll-free Pest Hotline at **1-800 491-1899** if you feel you've seen the spongy moth or would like to have items inspected especially if you have recently traveled to or had visitors from the infested area shown on the map. Two webinar meetings have been scheduled for your area on Tuesday, Sept. 16th to address the planned spongy moth survey activities. Additional material and meeting information can be found by visiting: [www.cdfa.ca.gov/plant/sm](http://www.cdfa.ca.gov/plant/sm)

Los funcionarios agrícolas pronto realizarán una inspección visual en su vecindario. Para obtener información sobre esta inspección, comuníquese con la Línea de Atención al Cliente al **1-800-491-1899**.



CALIFORNIA DEPARTMENT OF  
FOOD & AGRICULTURE

1220 N Street • Sacramento, CA 95814

## OFFICIAL NOTICE

### Webinar Public Meeting on Planned Survey Activities in Your Neighborhood

An infestation of the **spongy moth** has been found in your immediate neighborhood. This invasive species attacks a wide range of native and landscape trees growing here. Learn more about SM at [www.cdfa.ca.gov/plant/SM](http://www.cdfa.ca.gov/plant/SM)

**Public Meeting: Tuesday, Sept. 16, 2025 at Noon & 6:00 p.m.**

- **12:00 pm/Noon Zoom URL:** <https://tinyurl.com/vm4u6crw>
- **6:00 pm Zoom URL:** <https://tinyurl.com/3hd3d64z>

Passcode for both meetings: CDF@2025!

Meeting Document URL: [www.cdfa.ca.gov/plant/SM](http://www.cdfa.ca.gov/plant/SM)

