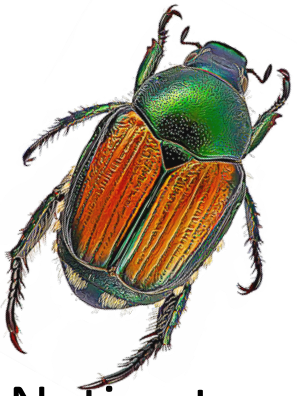


Help Us Protect Our Natural Resources, Neighborhood
Gardens, and Agriculture From Japanese Beetle



The Pest

Native to eastern Asia

Large (up to 15 mm long) & colorful

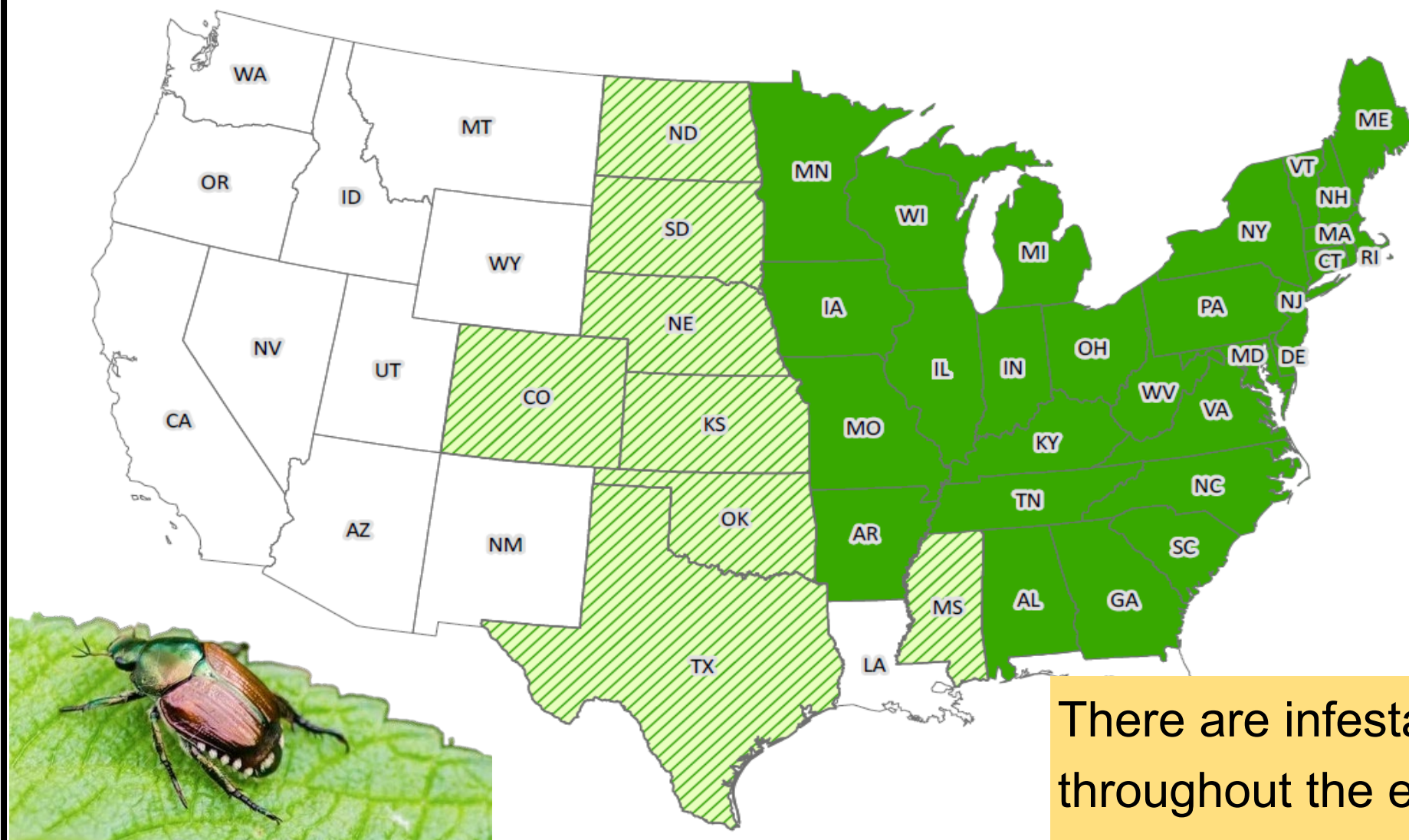
Lays eggs on/near soil surface

Adults prefer to feed on members of Rose family but will feed on a multitude of host plants (>300 different types), larvae prefer roots of various grasses.



California's climate
and plants are ideal for
a Japanese beetle
population to persist &
become permanently
established





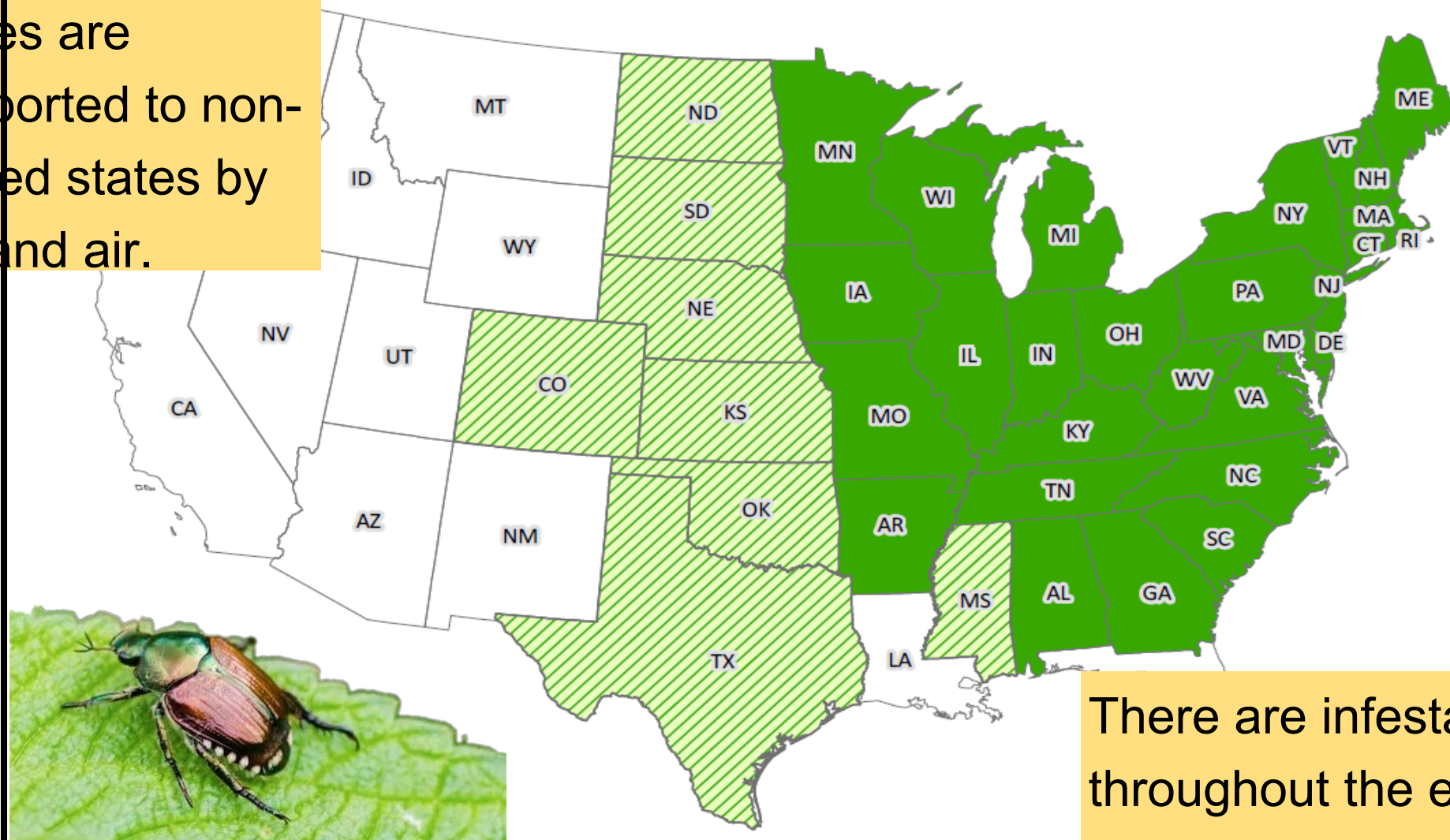
○ No Infestation ▨ Partial Infestation ● General Infestation



Document Path: G:\DART\GIS\JapaneseBeetle\Japanese_Beetle_Infestation.mxd Coordinate System: North America Albers Equal Area Conic

There are infestations throughout the eastern U.S. persisting without the natural predators of their native range

Beetles are transported to non-infested states by land and air.



○ No Infestation ▨ Partial Infestation ● General Infestation



Document Path: G:\DART\GIS\JapaneseBeetle\Japanese_Beetle_Infestation.mxd Coordinate System: North America Albers Equal Area Conic

There are infestations throughout the eastern U.S. persisting without the natural predators of their native range



Japanese Beetle Life Cycle



Japanese Beetle Larvae Damage



Adult Japanese Beetle Damage

Hosts Specific To Sacramento County

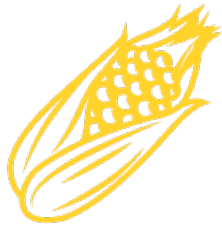
2019/2020 Gross Production Values (2 year average) of the Sacramento County Crops susceptible to Japanese Beetle damage



Walnuts
\$4 million



Grapes
\$166 million



Corn
\$20 million



Cherries
\$4.5 million



Alfalfa
\$16.5 million



Nursery
\$33 million

Common Landscape Trees & Plants Affected

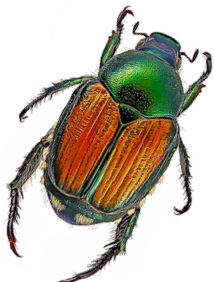
Roses
Common sunflower
Japanese maple
Crepe myrtle
Norway maple

California Privet
Butterfly bush
Hawthorn
Canna
Dahlia

Potential Export Implications



California is presently a “Category 1” **UNINFESTED STATE** set forth by USDA, the National Plant Board, and the regulated industry which affords nursery exports to other states unimpeded by regulations against Japanese beetle



A significant and repeated number of Japanese Beetle detections could threaten to move our county into a “Category 2” **PARTIALLY INFESTED STATUS** enacting strenuous protocols upon our nursery industry

(see [PQM 3280](#)) under the “[U.S. Domestic Japanese Beetle Harmonization Plan](#)”

Vehicle Inspection



Current Prevention Activities

**Statewide & High Risk
Detection Trapping**



Cargo Inspections





Eradication is Possible

Early Detection

Precision Delimitation

Science-Based Control

Strong Partnerships

Community Action

Trapping for Early Detection

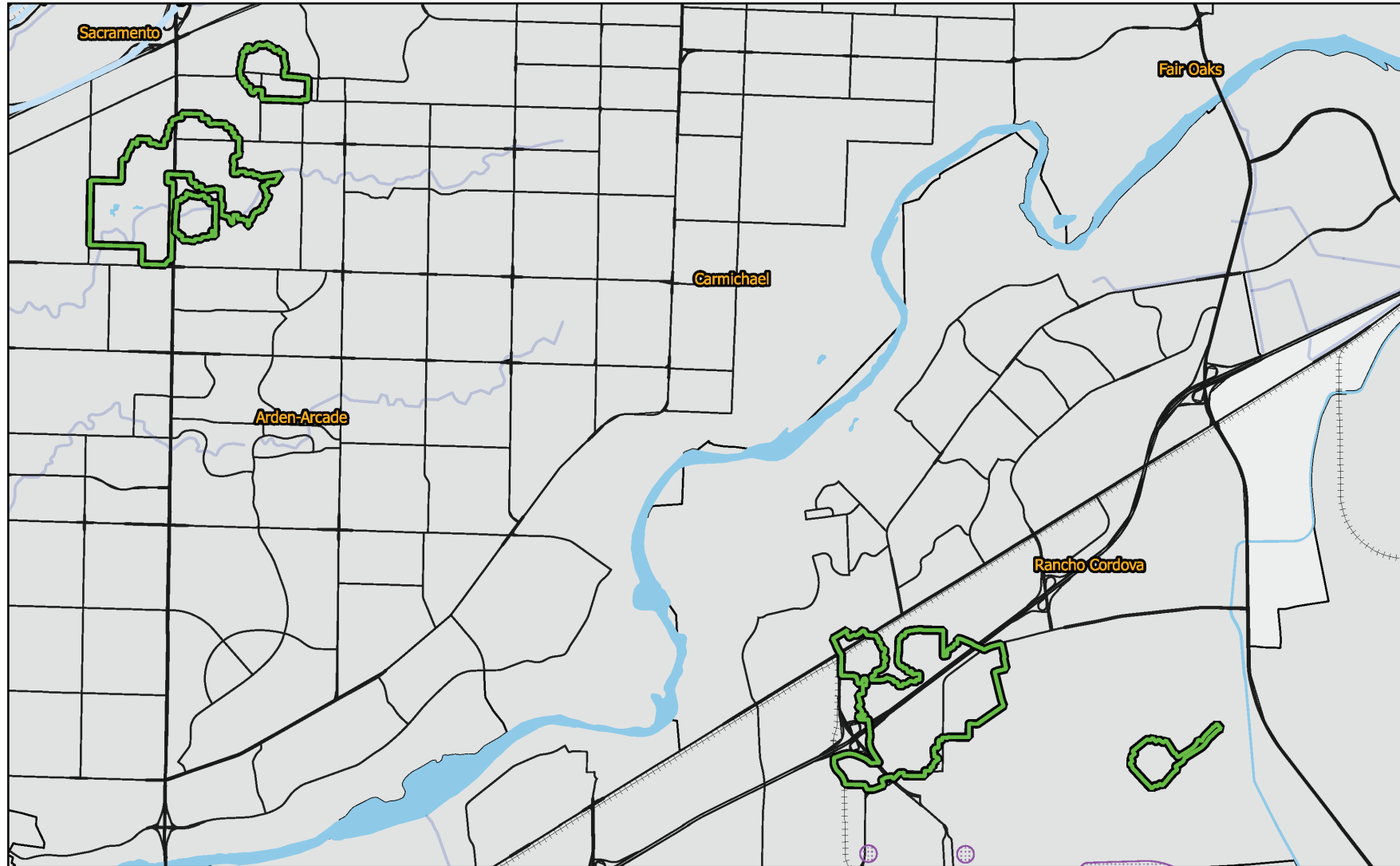


Precision Delimitation

- Specific determination of the extent of the infestation.
- Mapping (statewide trapping grid with trap placement, google earth, crop layers).
- Host proximity (adult & larvae).
- Biology of pests.
- Known lure attractiveness.
- Targeted Treatments



Japanese Beetle Eradication Project
Arden-Arcade and Rancho Cordova, Sacramento County
2022

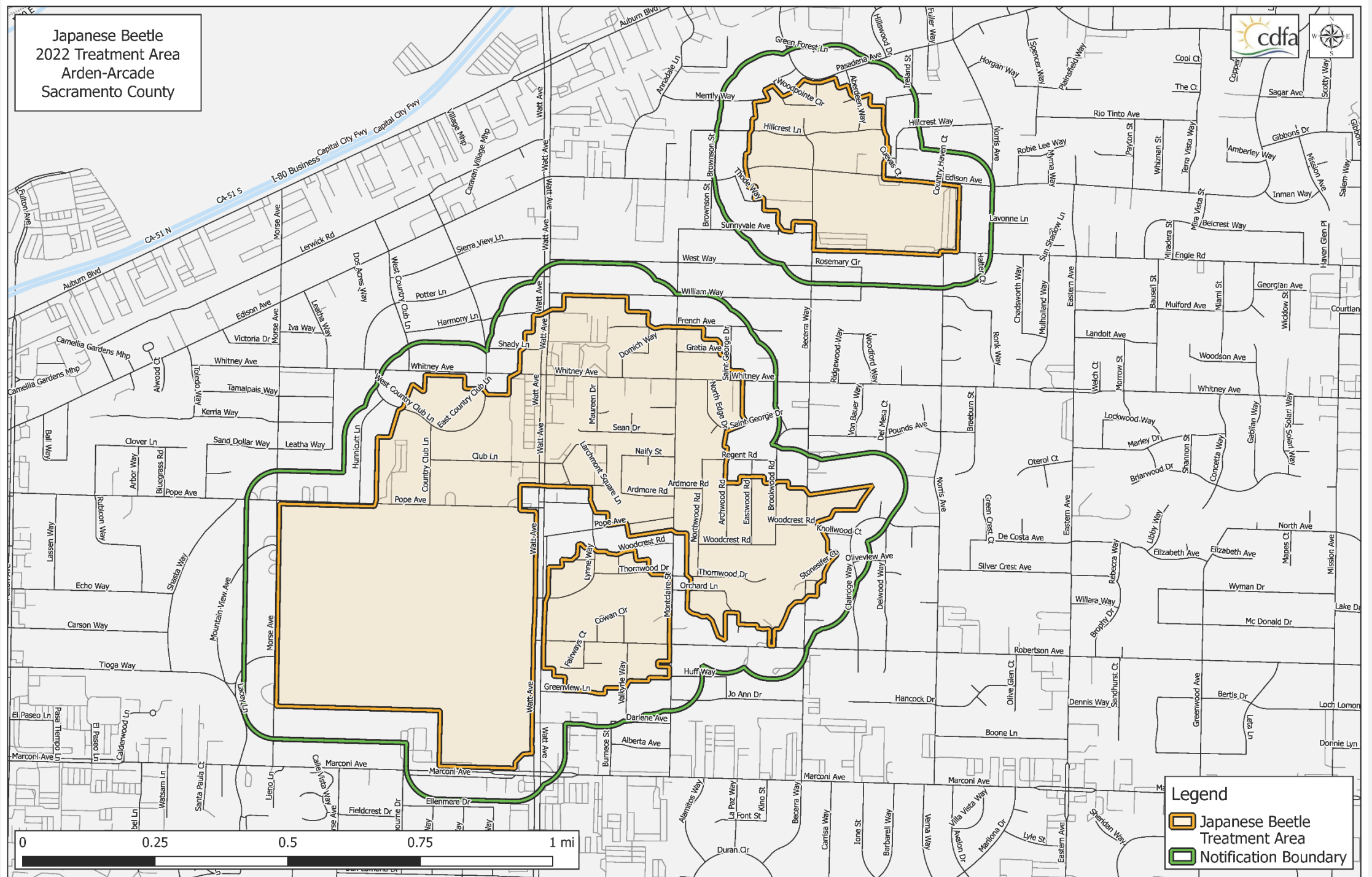


200 Meter
Treatment Area

Sensitive Environmental
Area/Treatment
Mitigations In Place



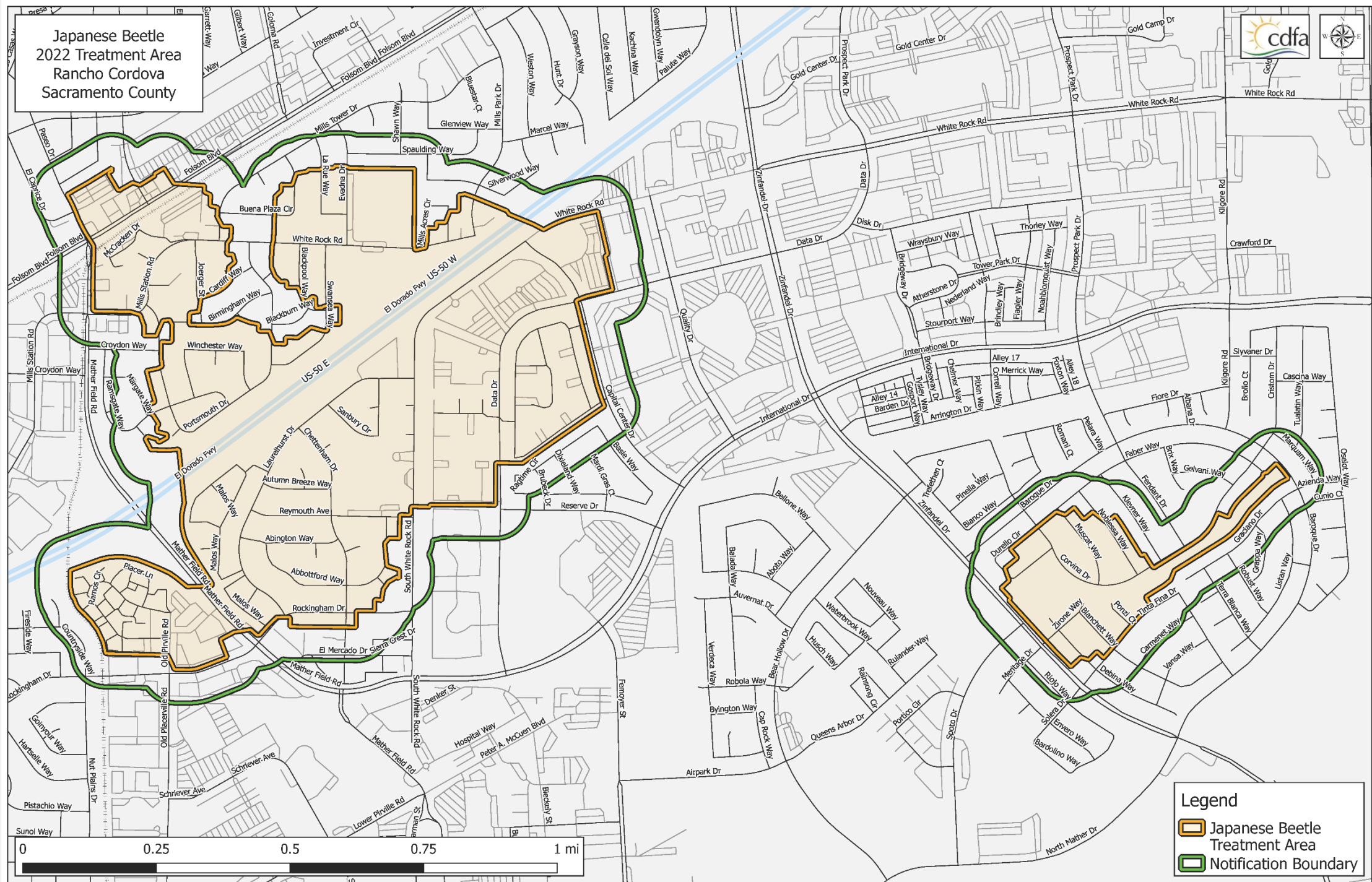
Japanese Beetle
2022 Treatment Area
Arden-Arcade
Sacramento County



Legend

- Japanese Beetle Treatment Area
- Notification Boundary

Japanese Beetle
2022 Treatment Area
Rancho Cordova
Sacramento County



Legend

- Japanese Beetle Treatment Area
- Notification Boundary

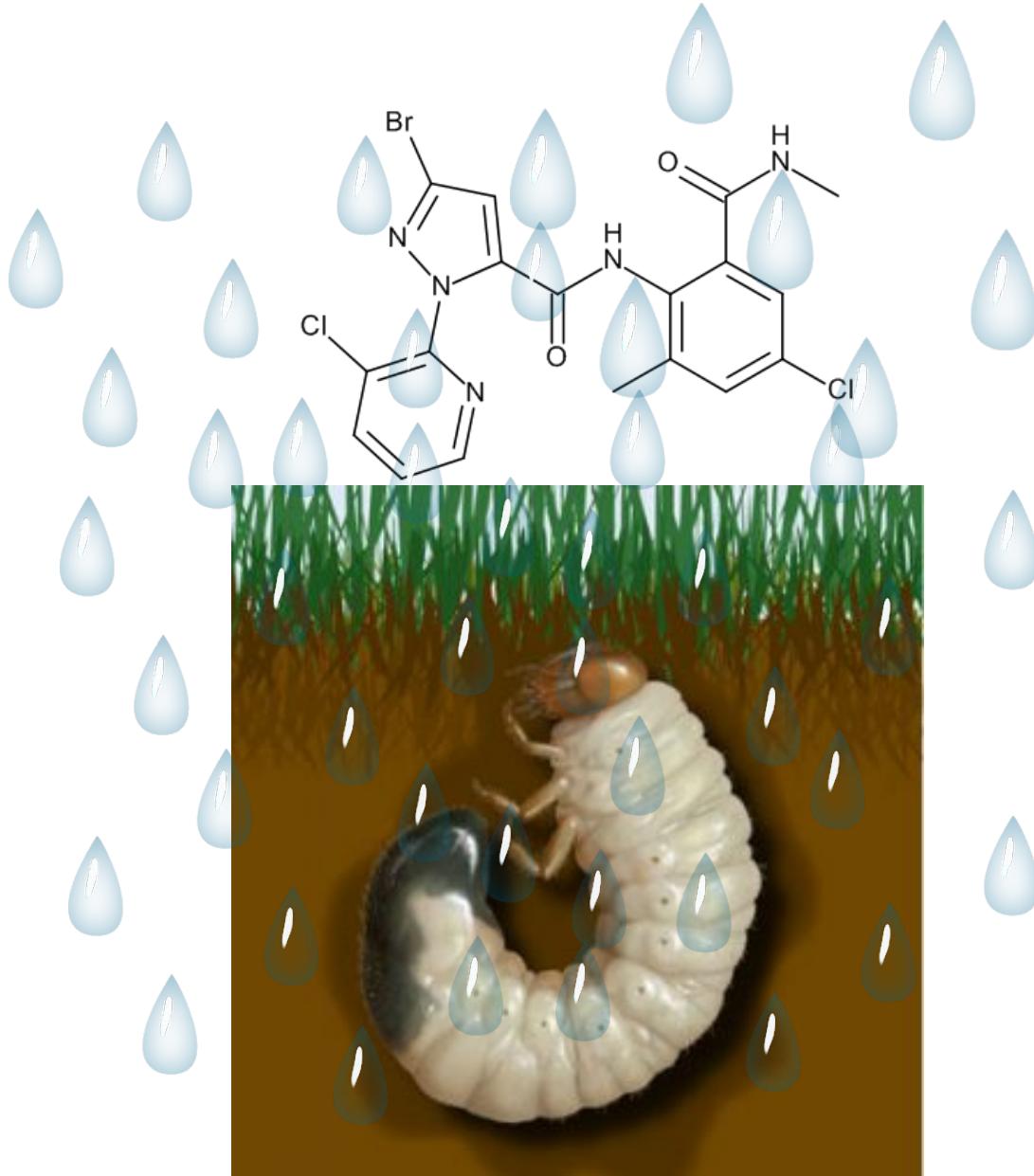


Science-Based Control Measures

Due to the number of detections, treatment will be needed in 2022

- One treatment per year - turf and lawns.
- Initial treatment will use liquid spray
- Could in the future be potentially spread by granular pellets





- Acelepryn is labeled as a “reduced risk” pesticide posing a lower risk to human health and the environment than other pesticides allowed for the same use.
- Acelepryn has a reduced risk for humans, pets (dogs & cats), and some beneficial insects.
- Ground applications of Acelepryn targets grubs that are developing in the soil.
- Targeted foliar treatments will only be needed if numerous adult beetles are detected in an area.



Photo Courtesy of CDFW

- **Consultations to not affect threatened /endangered species**
- **No treatments near bodies of water**



Photo Courtesy of CDFW

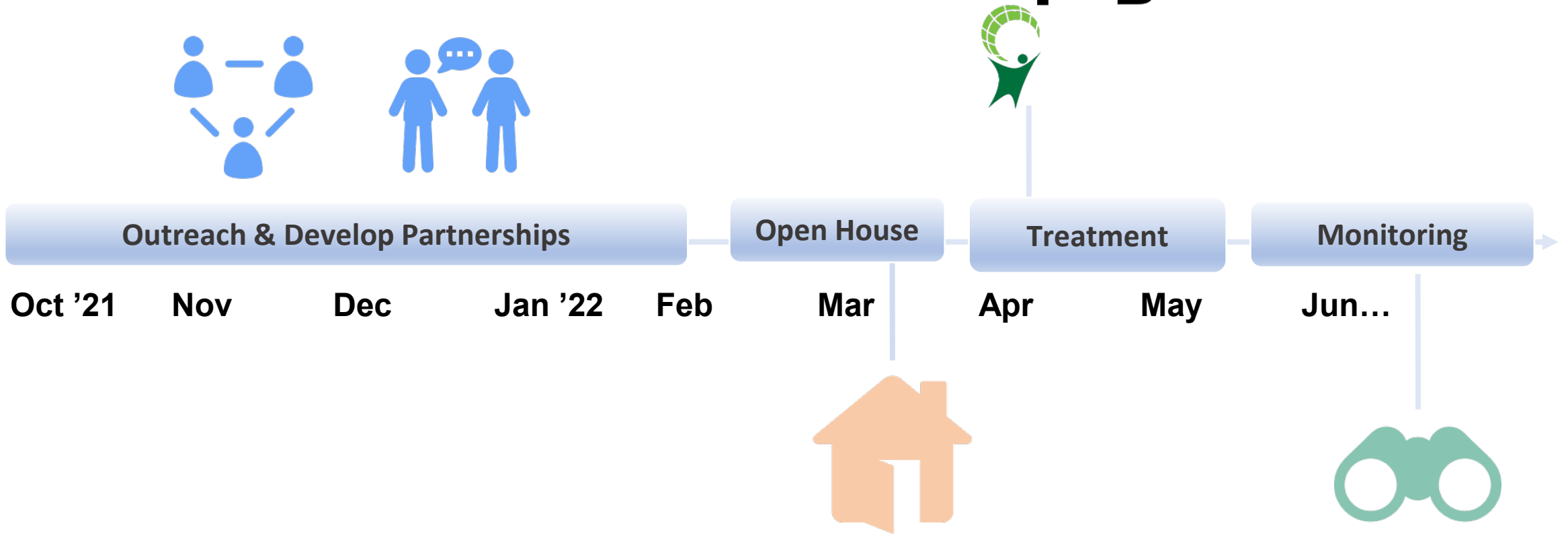
- **Consultations to not affect threatened /endangered species**
- **No treatments near bodies of water**



CDFW staff, in coordination with DPR, will ensure safe and proper treatment applications and post-treatment monitoring

Timeline of Activities

Acelepryn



What to Expect

Prior to treatment

- Residents will receive information including our 800 number for reporting beetles at the virtual open house.
- Residents will receive treatment information which also includes our 800 number.

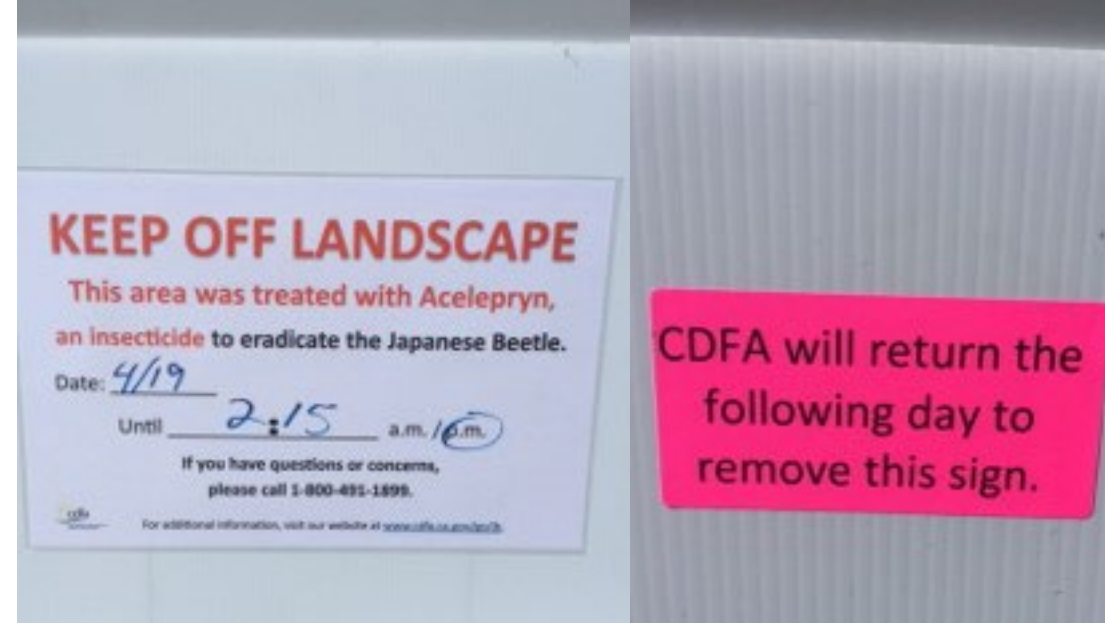
During treatment

- We will have scheduled treatment days; however, we will work around residents' schedules.
- Only professional staff in uniform with prominent ID badges will approach homes.
- We will never ask to come into the home.
- The treatment is free of charge.
- We will politely move toys and lawn furniture, if needed.

What to Expect

Post treatment

- Signs will be placed on treated lawns.
- Residents will be asked to stay off the lawn until it dries.
- Signs will be removed the following day.

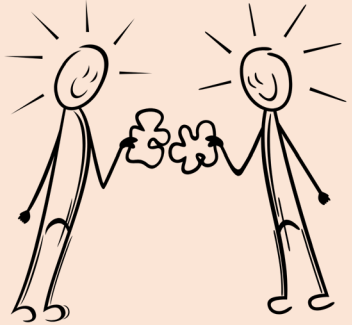




Partnerships



What Can Residents Do?

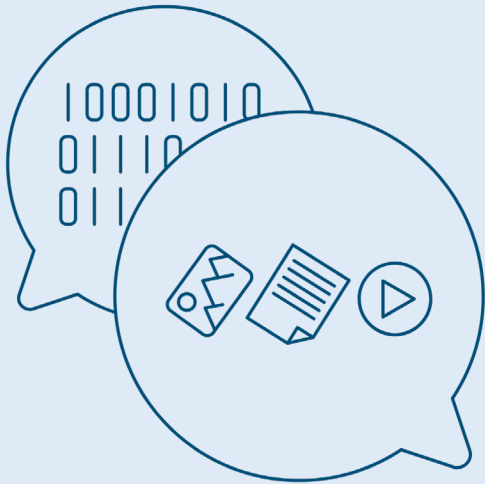


Cooperate with agricultural staff for treatments and identify places for survey traps. Keep an eye out for beetles and report them.

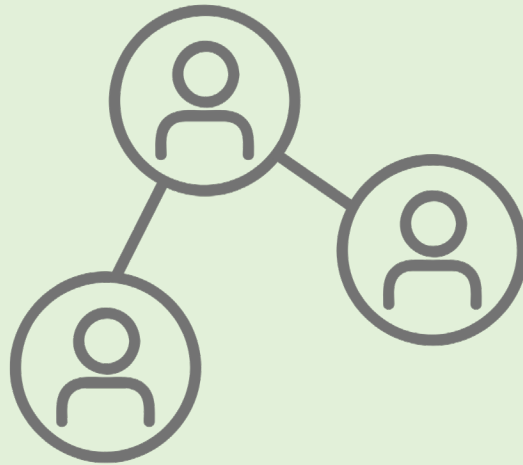


Report beetle presence and potential plant damage to the CDFA Pest Hotline: 800-491-1899

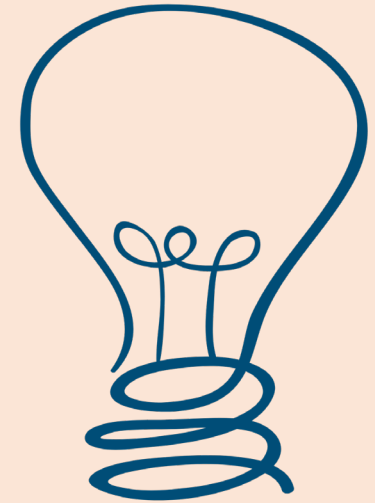
Requesting Your Partnership



Send out information to your constituents, neighbors, and community groups



Help us connect us with local community members and organizations



Do you have ideas to help with this project?



Thank you!



David Pegos

David.pegos@cdfa.ca.gov

916-654-0317

Dr. Jason Leathers

Jason.leathers@cdfa.ca.gov



Chrisandra (Chris) Flores

Sacramento County Agricultural Commissioner

florescj@saccounty.net

916-875-0538