

Beet Curly Top Virus Control Program

Monthly Report

California Department of Food and Agriculture
Plant Health and Pest Prevention Services
Integrated Pest Control Branch
2895 N. Larkin Ave, Suite A
Fresno, CA 93727
Phone: (559) 294-2031
Fax: (559) 294-2037



January 2026

Program Update

- In January, Beet Curly Top Virus Control Program (BCTVCP) personnel conducted beetle leafhopper (BLH) and vegetation surveys in the foothills on the westside of the San Joaquin and Sacramento Valleys in Butte, Colusa, Fresno, Glenn, Kern, Kings, Madera, Merced, Sacramento, San Joaquin, Solano, Stanislaus, Sutter, and Yolo counties.
- BLH counts remained low in all survey areas statewide (0-1 BLH per sweep set). A few hillside properties in the San Joaquin Valley averaged (1-2 BLH per sweep set).
- Staff continue to survey roadsides and fallow fields. Program staff have observed a high volume of non-target host due to warmer weather.
- Commonly observed host vegetation is Mallow, Filaree, Mustards, Plantago, London Rocket, and Peppergrass. Dense fog and warm weather conditions have increased the abundance of annual grasses, limiting ideal conditions for BLH development.
- The Program would like to remind growers and PCA's that any fallow fields or weedy areas adjacent to susceptible crops should be inspected for BLH prior to disking or mowing. The Program can be available for BLH surveys and, if needed, control of fallow fields and/or roadsides where BLH counts reach the threshold triggers for control.
- Please visit the Program's webpage to view Program reports and alerts. https://www.cdfa.ca.gov/plant/ipc/curlytopvirus/ctv_hp.htm
- The BCTVCP has deployed a Beet Leafhopper Sighting Report that industry can use to report BLH or CTV incidence in the field. This report is available using the following web browser link: <https://arcg.is/O9LyK> or by downloading the ArcGIS Survey123 app from the Google Play Store or Apple App Store and using the QR code below. A user guide for the BLH Sighting Report is available on the BCTVCP webpage.



- For program inquiries or questions regarding this report, please contact Kendra Tapia at kendra.tapia@cdfa.ca.gov or (916) 823-1169.

2026 Beet Curly Top Virus 3-Year Average BLH Counts

January County Average BLH Counts				
<u>County</u>	<u>2023</u>	<u>2024</u>	<u>2025</u>	<u>2026</u>
Fresno	0.2	4.9	0.2	0.2
Kings	0.05	0.9	0.4	0.2
Kern	0.05	0.2	0.1	0.1
Madera	-	-	-	0
Merced	0	0.5	0.02	0.03
Butte	-	0.01	0.03	0.1
Colusa	-	0.1	0.06	0.5
Glenn	-	-	-	0.1
Sacramento	-	0	0.02	0.1
San Joaquin	-	0.2	0.1	0.3
Stanislaus	-	0.5	-	0.03
Sutter	-	0	0.04	0.1
Solano	-	0	0.09	0.1
Yolo	-	0.02	0.02	0.3

2026 Beet Curly Top Virus Sample Results

January 2026- BCTV Sample Results by County														
	Fresno	Kings	Kern	Merced	Madera	Glenn	Yolo	Colusa	Sutter	Butte	Solano	Sacramento	Stanislaus	San Joaquin
Positive BLH	3	-	-	-	-	-	-	-	-	-	-	-	-	-
Negative BLH	1	-	-	-	-	-	-	-	-	-	-	-	-	-
Positive Host Plant	-	-	-	-	-	-	-	-	-	-	-	-	-	-
Negative Host Plant	7	-	48	-	-	-	6	1	2	2	2	3	-	-

County Reports

Fresno County

- BLH population surveys were conducted in the overwintering foothills as well as in fallow fields and roadsides within five miles of the foothills.
- Overall counts remained low throughout survey areas, averaging 0-1 BLH per sweep set.
- Host plant vegetation surveyed included Filaree, Peppergrass, Mallow, and Plantago.
- A map identifying the location of the BLH counts is provided at the end of the report.

Fresno County BLH Survey		
Location	Date	Average # of BLH per sweep set
Fresno Zone 02	1/1-1/31	0
Fresno Zone 04	1/1-1/31	0.1
Fresno Zone 05	1/1-1/31	0
Fresno Zone 07	1/1-1/31	0.02
Fresno Zone 09	1/1-1/31	0
Field 12	1/1-1/31	0.8
Field 20	1/1-1/31	0.1
Field 17	1/1-1/31	0.1
Field 9	1/1-1/31	0.1
Field 4	1/1-1/31	0.2
Field 14	1/1-1/31	0.3
Field 11	1/1-1/31	0.2

Field 21	1/1-1/31	0.2
Field 5	1/1-1/31	0
Field 2	1/1-1/31	0.3
Field 10	1/1-1/31	0.4
Field 3	1/1-1/31	0.2
Field 15	1/1-1/31	0.2
Field 18	1/1-1/31	0.02

Kern County

- BLH population surveys were conducted in the overwintering foothills as well as in fallow fields and roadsides within five miles of the foothills.
- Overall counts remained low throughout survey areas, averaging 0-1 BLH per sweep set.
- Host plant vegetation surveyed included Filaree, Mallow, Peppergrass, and London Rocket.
- A map identifying the location of the BLH counts is provided at the end of the report.

Kern County BLH Survey		
<u>Location</u>	<u>Date</u>	<u>Average # of BLH per sweep set</u>
Field 37	1/1-1/31	0.04
Field 42	1/1-1/31	0.1
Field 26	1/1-1/31	0.6
Field 28	1/1-1/31	0.1
Field 47	1/1-1/31	0.1
Field 44	1/1-1/31	0.1
Field 49	1/1-1/31	0.02
Field 45	1/1-1/31	0.1
Field 27	1/1-1/31	0.1
Field 32	1/1-1/31	0.1
Field 39	1/1-1/31	0.03
Field 38	1/1-1/31	0.1
Field 36	1/1-1/31	0.03
Field 34	1/1-1/31	0
Field 33	1/1-1/31	0.1
Field 35	1/1-1/31	0.1
Field 41	1/1-1/31	0
Field 40	1/1-1/31	0
Field 48	1/1-1/31	1.7

Kings County

- BLH population surveys were conducted in the overwintering foothills as well as in fallow fields and roadsides within five miles of the foothills.
- Overall counts remained low throughout survey areas, averaging 0-1 BLH per sweep set.
- Host plant vegetation surveyed included Mustards, Plantago, Peppergrass, Mallow, and Filaree.
- A map identifying the location of the BLH counts is provided at the end of the report.

Kings County BLH Survey		
<u>Location</u>	<u>Date</u>	<u>Average # of BLH per sweep set</u>
Field 26	1/1-1/31	0.2
Field 24	1/1-1/31	0.4
Field 25	1/1-1/31	0.2

Madera County

- BLH population surveys were conducted in fallow fields and roadsides within five miles of the foothills.
- No BLH was observed during survey in Madera County.
- Host Vegetation surveyed included Mallow, Mustards, and Goosefoot.

Merced County

- BLH population surveys were conducted in fallow fields and roadsides within five miles of the foothills.
- No BLH was observed during survey in Madera County.
- Host vegetation surveyed included Mustards, Filaree, Mallow, London Rocket, and Shepherd's Purse.
- A map identifying the location of BLH counts is provided at the end of the report.

Merced County BLH Survey		
<u>Location</u>	<u>Date</u>	<u>Average # of BLH per sweep set</u>
Merced Zone 01	1/1-1/31	0.03

Colusa County

- BLH population surveys were conducted in fallow fields and roadsides within five miles of the foothills.
- Overall counts remained low throughout the survey areas, averaging 0-1 BLH per sweep set.
- Host vegetation surveyed included Mallow, Mustards, Filaree, Lamb's Quarter, and Peppergrass.
- A map identifying the location of BLH counts is provided at the end of the report.

Colusa County BLH Survey		
<u>Location</u>	<u>Date</u>	<u>Average # of BLH per sweep set</u>
Colusa Zone 01	1/1-1/31	0.5

Yolo County

- BLH population surveys were conducted in fallow fields and roadsides within five miles of the foothills.
- Overall counts remained very low throughout the survey areas, averaging 0-1 BLH per sweep set.
- Host vegetation surveyed included Mallow, Filaree, Peppergrass, and Mustards.
- A map identifying the location of BLH counts is provided at the end of the report.

Yolo County BLH Survey		
<u>Location</u>	<u>Date</u>	<u>Average # of BLH per sweep set</u>
Yolo Zone 01	1/1-1/31	0.3

Sutter County

- BLH population surveys were conducted in fallow fields and roadsides within five miles of the foothills.
- Overall counts remained very low throughout the survey areas, averaging 0-1 BLH per sweep set.
- Host vegetation surveyed included Mallow, Mustards, and Filaree.
- A map identifying the location of BLH counts is provided at the end of the report.

Sutter County BLH Survey		
<u>Location</u>	<u>Date</u>	<u>Average # of BLH per sweep set</u>
Sutter Zone 01	1/1-1/31	0.1

Glenn County

- BLH population surveys were conducted in fallow fields and roadsides within five miles of the foothills.
- Overall counts remained very low throughout the survey areas, averaging 0-1 BLH per sweep set.
- Host vegetation surveyed included Mustards, Filaree, and Mallow.
- A map identifying the location of BLH counts is provided at the end of the report.

Glenn County BLH Survey		
<u>Location</u>	<u>Date</u>	<u>Average # of BLH per sweep set</u>
Glenn Zone 01	1/1-1/31	0.1

Butte County

- BLH population surveys were conducted in fallow fields and roadsides within five miles of the foothills.
- Overall counts remained very low throughout the survey areas, averaging 0-1 BLH per sweep set.
- Host vegetation surveyed included Filaree, Mustards, and Mallow.
- A map identifying the location of BLH counts is provided at the end of the report.

Butte County BLH Survey		
<u>Location</u>	<u>Date</u>	<u>Average # of BLH per sweep set</u>
Butte Zone 01	1/1-1/31	0.1

Solano County

- BLH population surveys were conducted in fallow fields and roadsides within five miles of the foothills.
- Overall counts remained very low throughout the survey areas, averaging 0-1 BLH per sweep set.
- Host vegetation surveyed included Filaree, Mustards, and Mallow.

- A map identifying the location of BLH counts is provided at the end of the report.

Solano County BLH Survey		
<u>Location</u>	<u>Date</u>	<u>Average # of BLH per sweep set</u>
Solano Zone 01	1/1-1/31	0.1

Stanislaus County

- BLH population surveys were conducted in fallow fields and roadsides within five miles of the foothills.
- Overall counts remained very low throughout the survey areas, averaging 0-1 BLH per sweep set.
- Host vegetation surveyed included Filaree, Salt Bush, Shepherd's Purse, and Mallow.
- A map identifying the location of BLH counts is provided at the end of the report.

Stanislaus County BLH Survey		
<u>Location</u>	<u>Date</u>	<u>Average # of BLH per sweep set</u>
Stanislaus Zone 01	1/1-1/31	0.03

Sacramento County

- BLH population surveys were conducted in fallow fields and roadsides within five miles of the foothills.
- Overall counts remained very low throughout the survey areas, averaging 0-1 BLH per sweep set.
- Host vegetation surveyed included Filaree, Mustards, and Mallow.
- A map identifying the location of BLH counts is provided at the end of the report.

Sacramento County BLH Survey		
<u>Location</u>	<u>Date</u>	<u>Average # of BLH per sweep set</u>
Sacramento Zone 01	1/1-1/31	0.1

San Joaquin County

- BLH population surveys were conducted in fallow fields and roadsides within five miles of the foothills.
- Overall counts remained very low throughout the survey areas, averaging 0-1 BLH per sweep set.

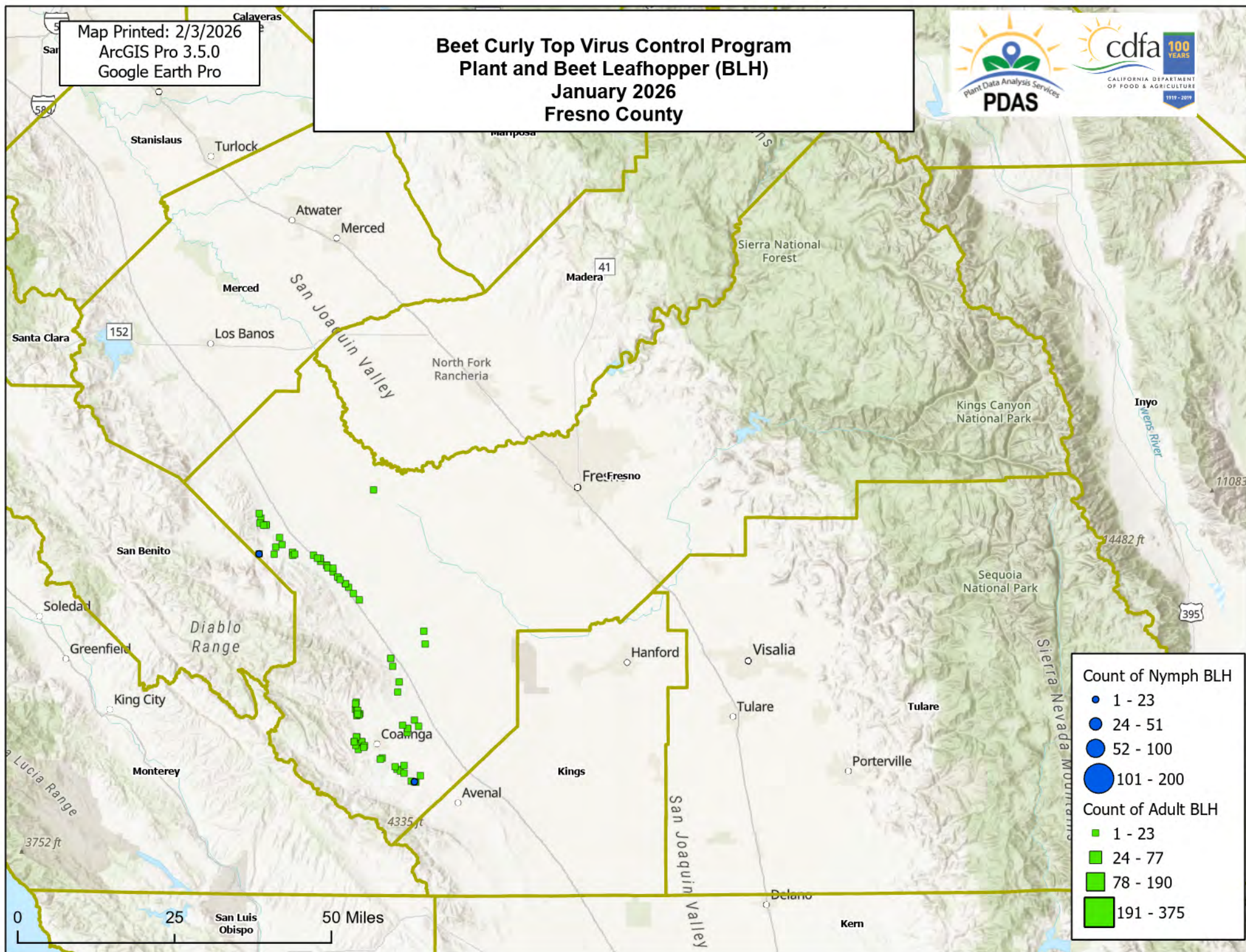
- Host vegetation surveyed included Russian thistle, Filaree, Mustards, Plantago, and Mallow.
- A map identifying the location of BLH counts is provided at the end of the report.

San Joaquin County BLH Survey		
<u>Location</u>	<u>Date</u>	<u>Average # of BLH per sweep set</u>
San Joaquin Zone 01	1/1-1/31	0.3

To subscribe to the BCTV monthly report, updates, and alerts, please use the link below:
www.cdfa.ca.gov/subscriptions/

Map Printed: 2/3/2026
ArcGIS Pro 3.5.0
Google Earth Pro

Beet Curly Top Virus Control Program Plant and Beet Leafhopper (BLH) January 2026 Fresno County



Count of Nymph BLH

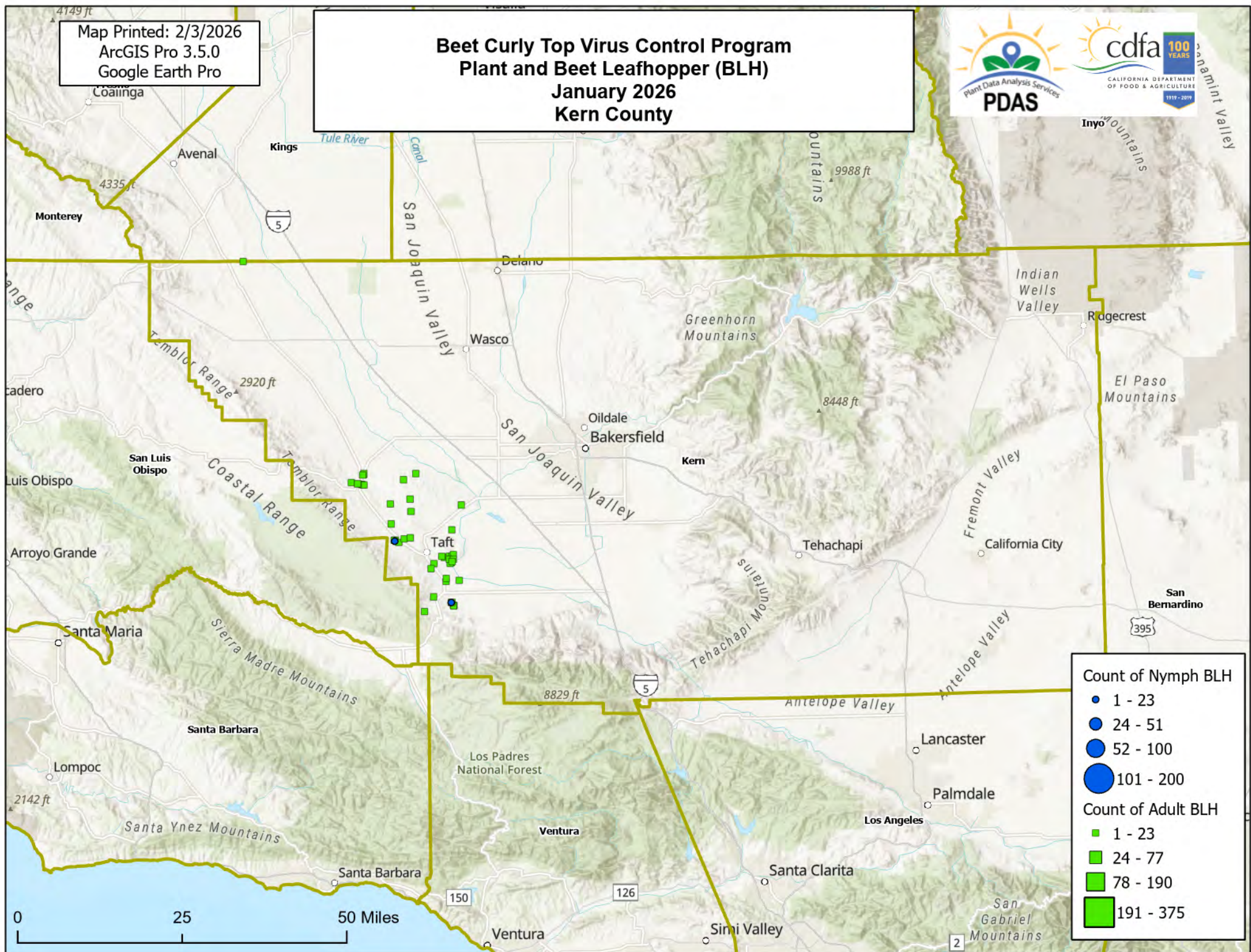
- 1 - 23
- 24 - 51
- 52 - 100
- 101 - 200

Count of Adult BLH

- 1 - 23
- 24 - 77
- 78 - 190
- 191 - 375

Map Printed: 2/3/2026
ArcGIS Pro 3.5.0
Google Earth Pro

Beet Curly Top Virus Control Program Plant and Beet Leafhopper (BLH) January 2026 Kern County



Count of Nymph BLH

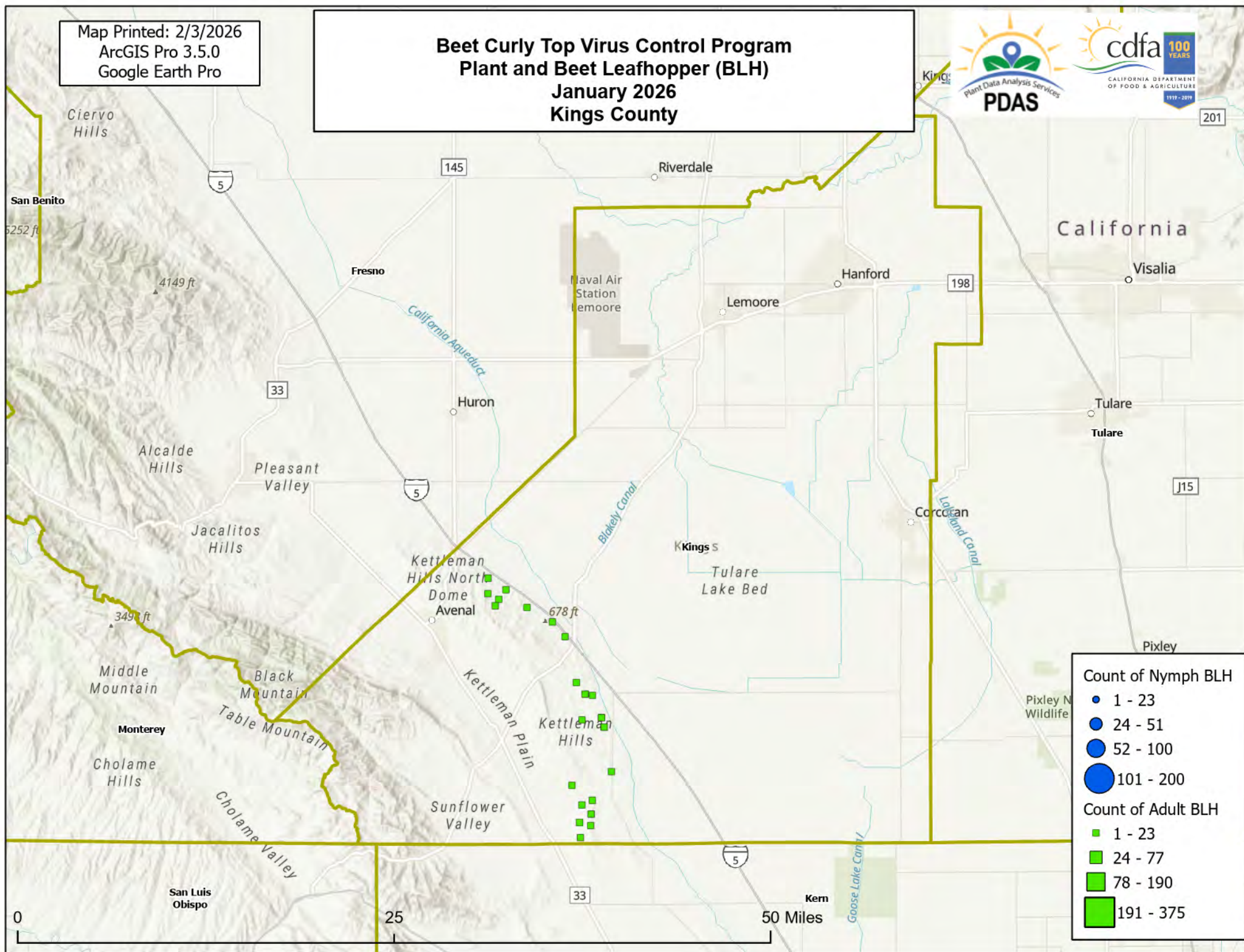
- 1 - 23
- 24 - 51
- 52 - 100
- 101 - 200

Count of Adult BLH

- 1 - 23
- 24 - 77
- 78 - 190
- 191 - 375

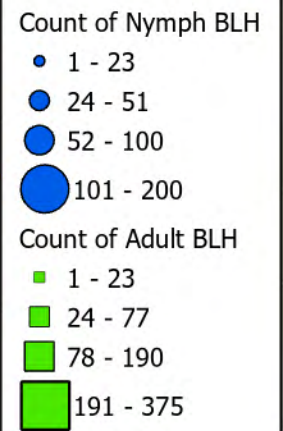
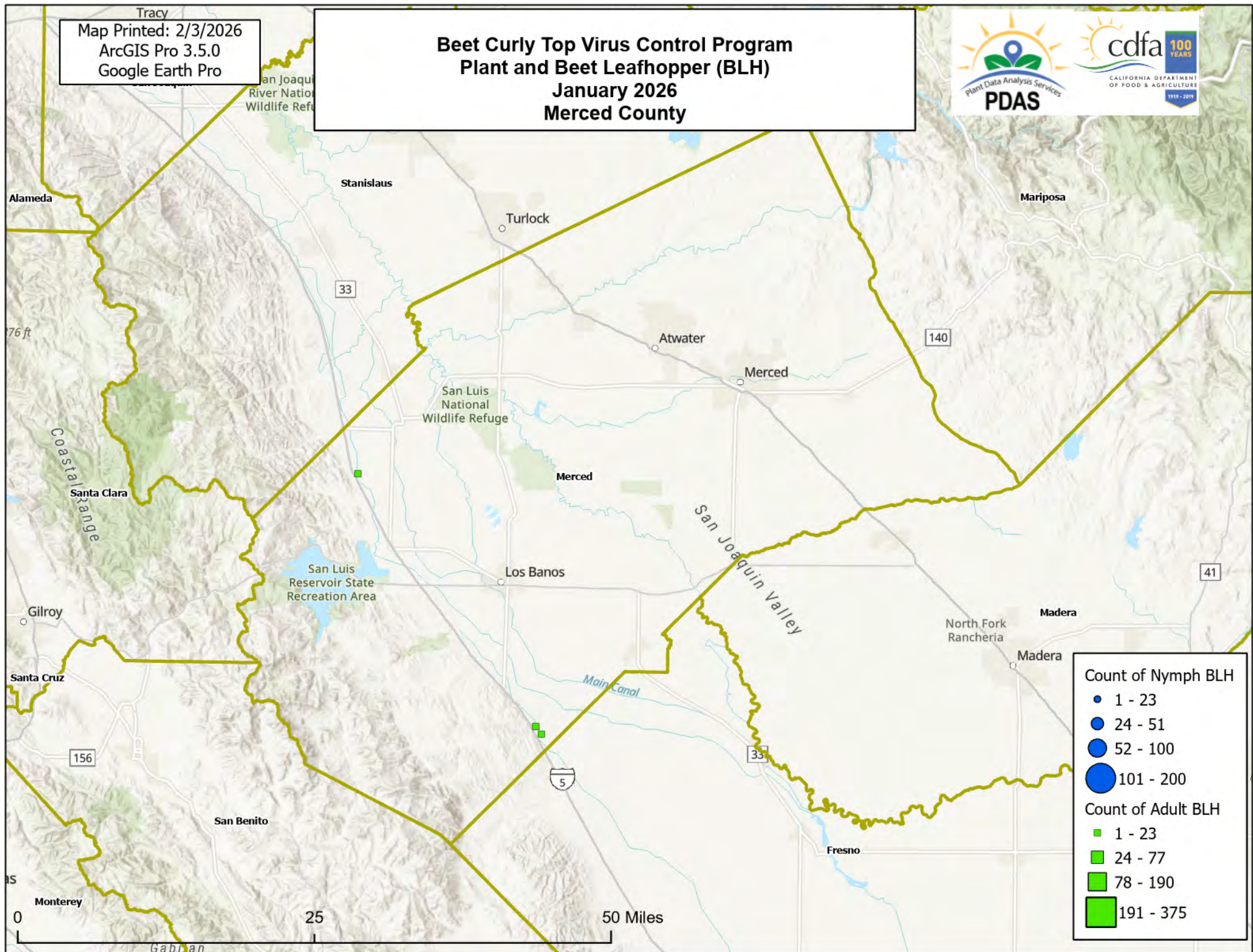
Map Printed: 2/3/2026
ArcGIS Pro 3.5.0
Google Earth Pro

Beet Curly Top Virus Control Program Plant and Beet Leafhopper (BLH) January 2026 Kings County



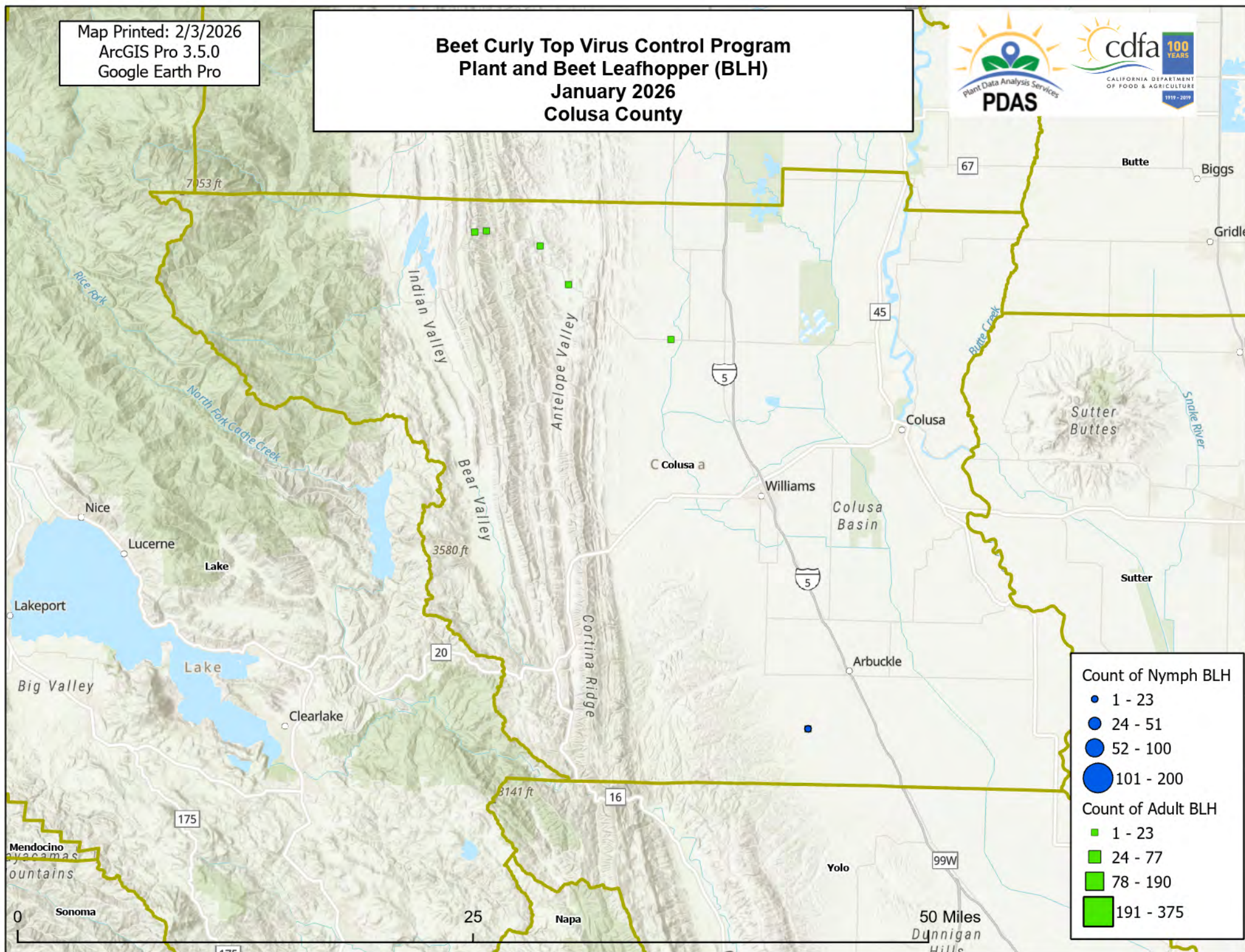
Map Printed: 2/3/2026
ArcGIS Pro 3.5.0
Google Earth Pro

Beet Curly Top Virus Control Program Plant and Beet Leafhopper (BLH) January 2026 Merced County



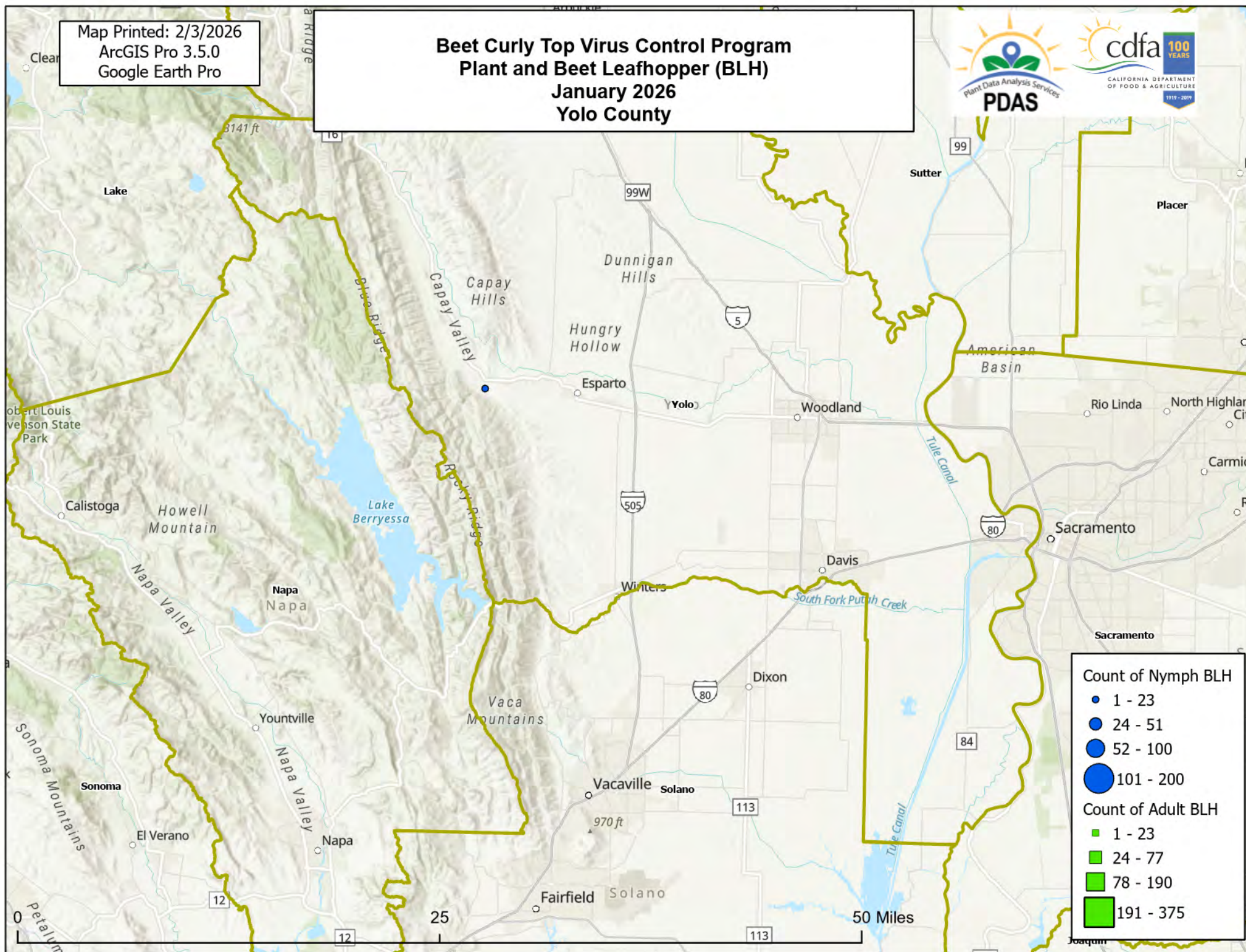
Map Printed: 2/3/2026
ArcGIS Pro 3.5.0
Google Earth Pro

Beet Curly Top Virus Control Program Plant and Beet Leafhopper (BLH) January 2026 Colusa County



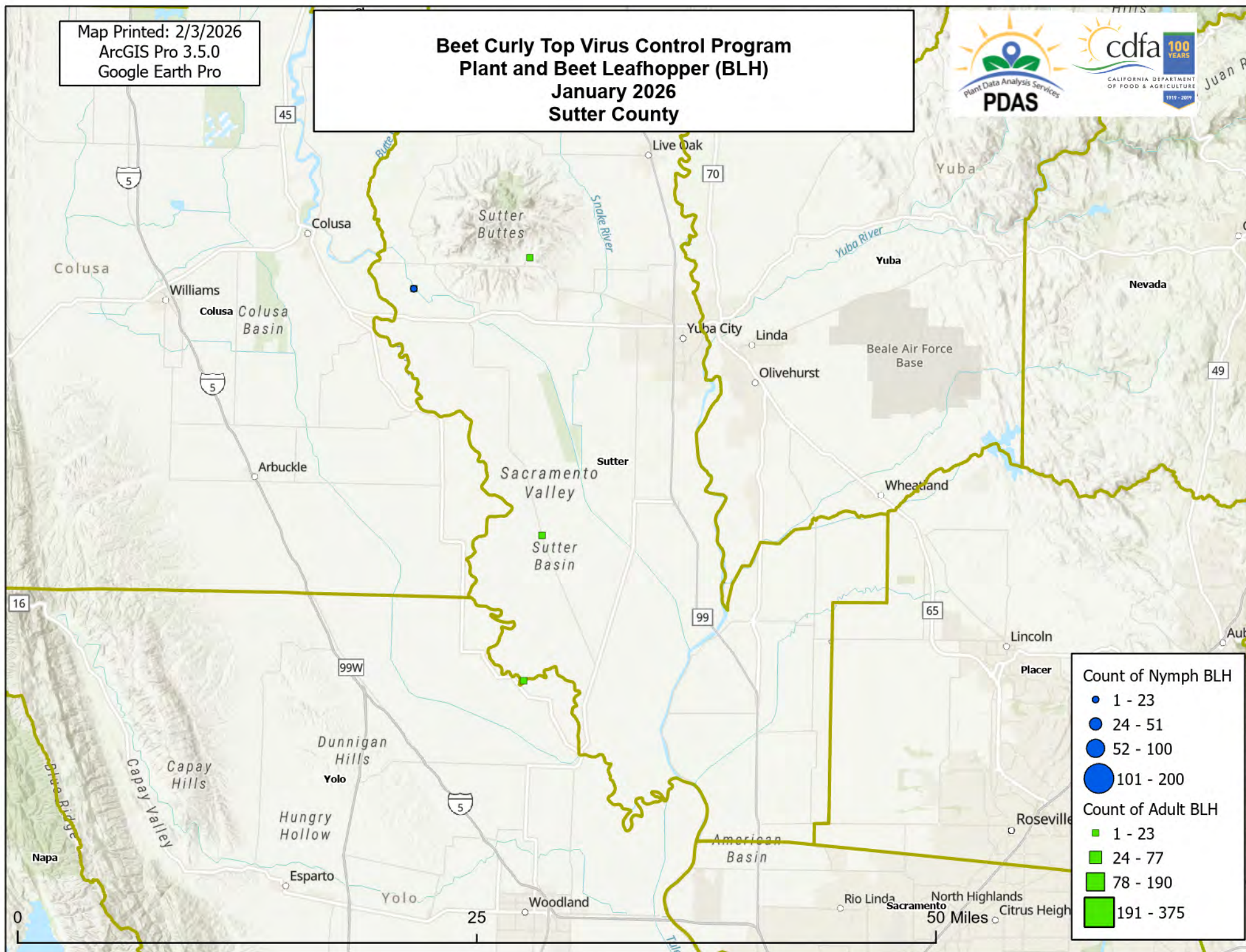
Map Printed: 2/3/2026
ArcGIS Pro 3.5.0
Google Earth Pro

Beet Curly Top Virus Control Program Plant and Beet Leafhopper (BLH) January 2026 Yolo County



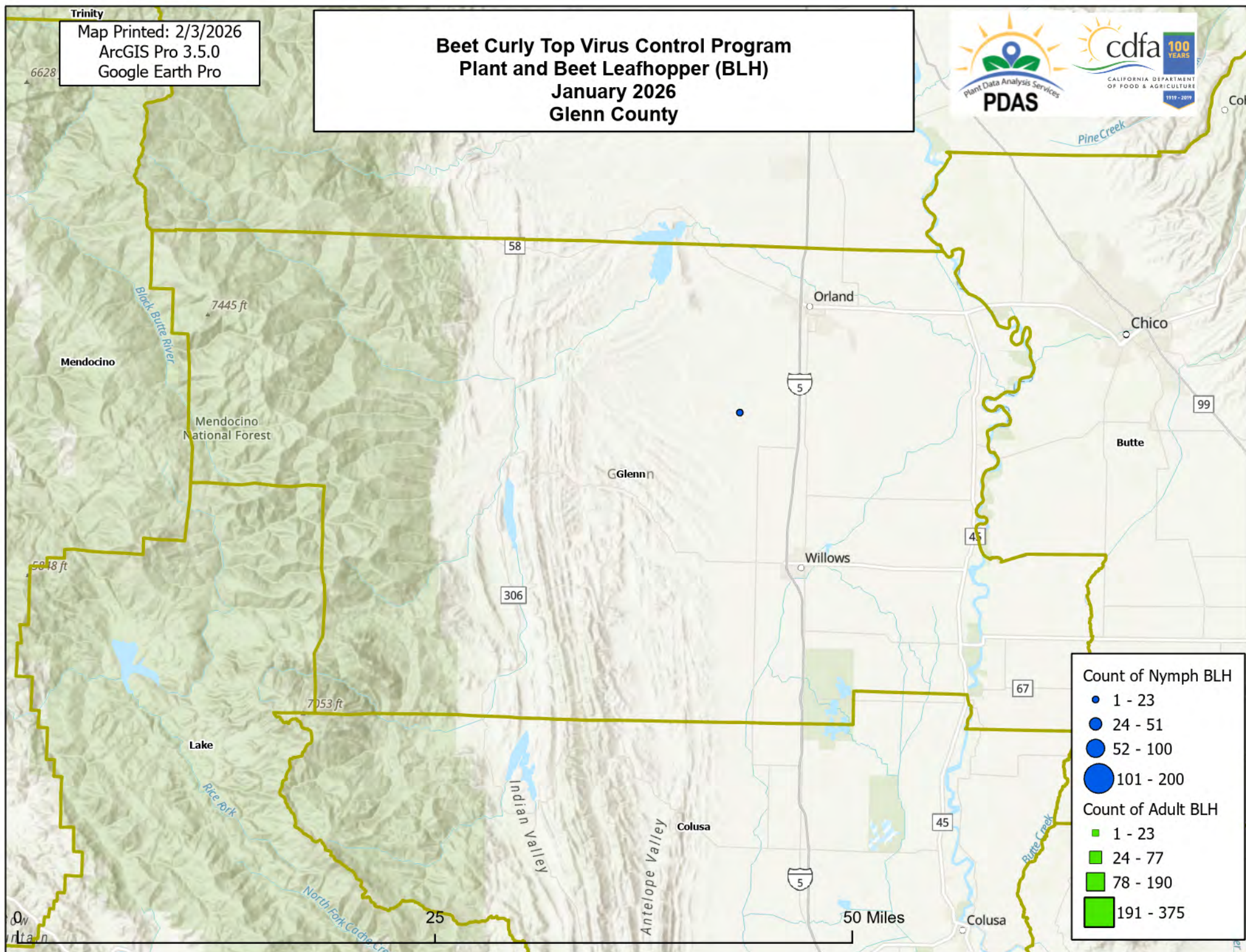
Map Printed: 2/3/2026
ArcGIS Pro 3.5.0
Google Earth Pro

Beet Curly Top Virus Control Program Plant and Beet Leafhopper (BLH) January 2026 Sutter County



Map Printed: 2/3/2026
ArcGIS Pro 3.5.0
Google Earth Pro

Beet Curly Top Virus Control Program Plant and Beet Leafhopper (BLH) January 2026 Glenn County



Count of Nymph BLH

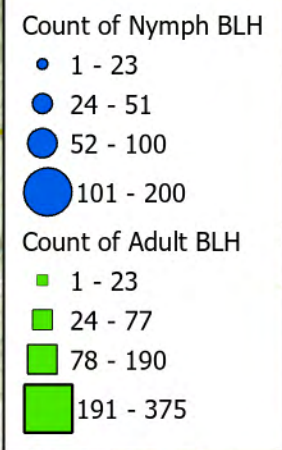
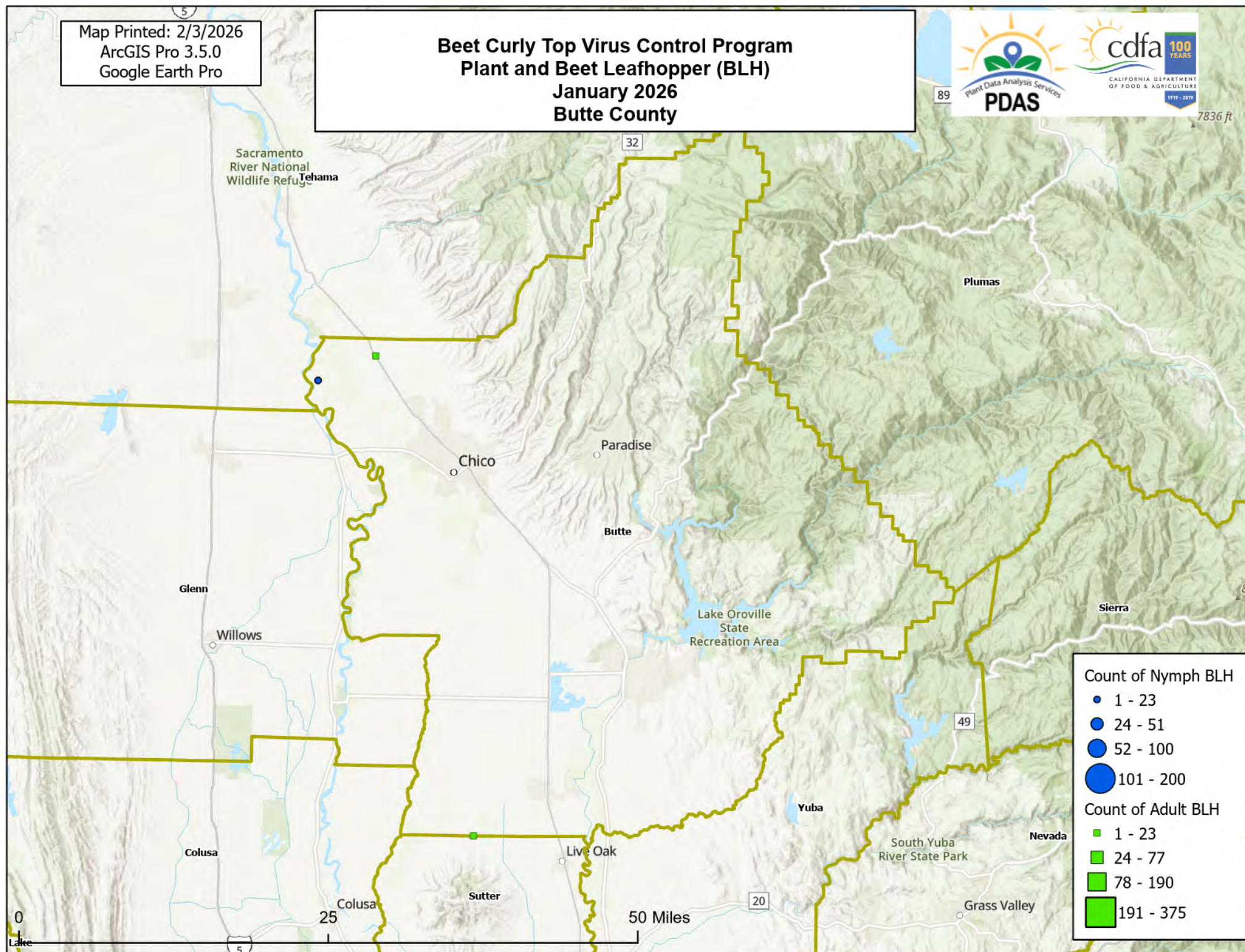
- 1 - 23
- 24 - 51
- 52 - 100
- 101 - 200

Count of Adult BLH

- 1 - 23
- 24 - 77
- 78 - 190
- 191 - 375

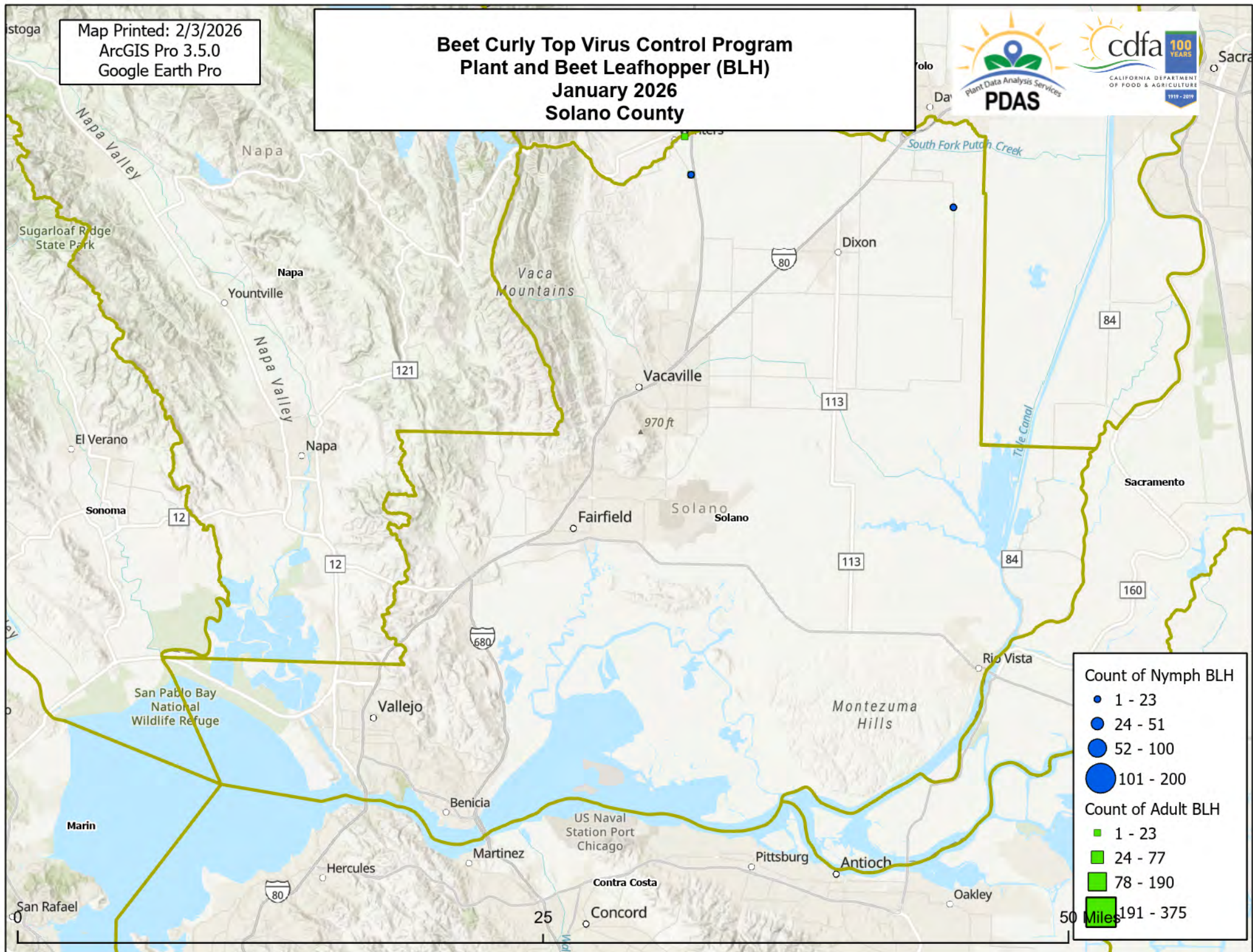
Map Printed: 2/3/2026
ArcGIS Pro 3.5.0
Google Earth Pro

Beet Curly Top Virus Control Program Plant and Beet Leafhopper (BLH) January 2026 Butte County



Map Printed: 2/3/2026
ArcGIS Pro 3.5.0
Google Earth Pro

Beet Curly Top Virus Control Program Plant and Beet Leafhopper (BLH) January 2026 Solano County



Count of Nymph BLH

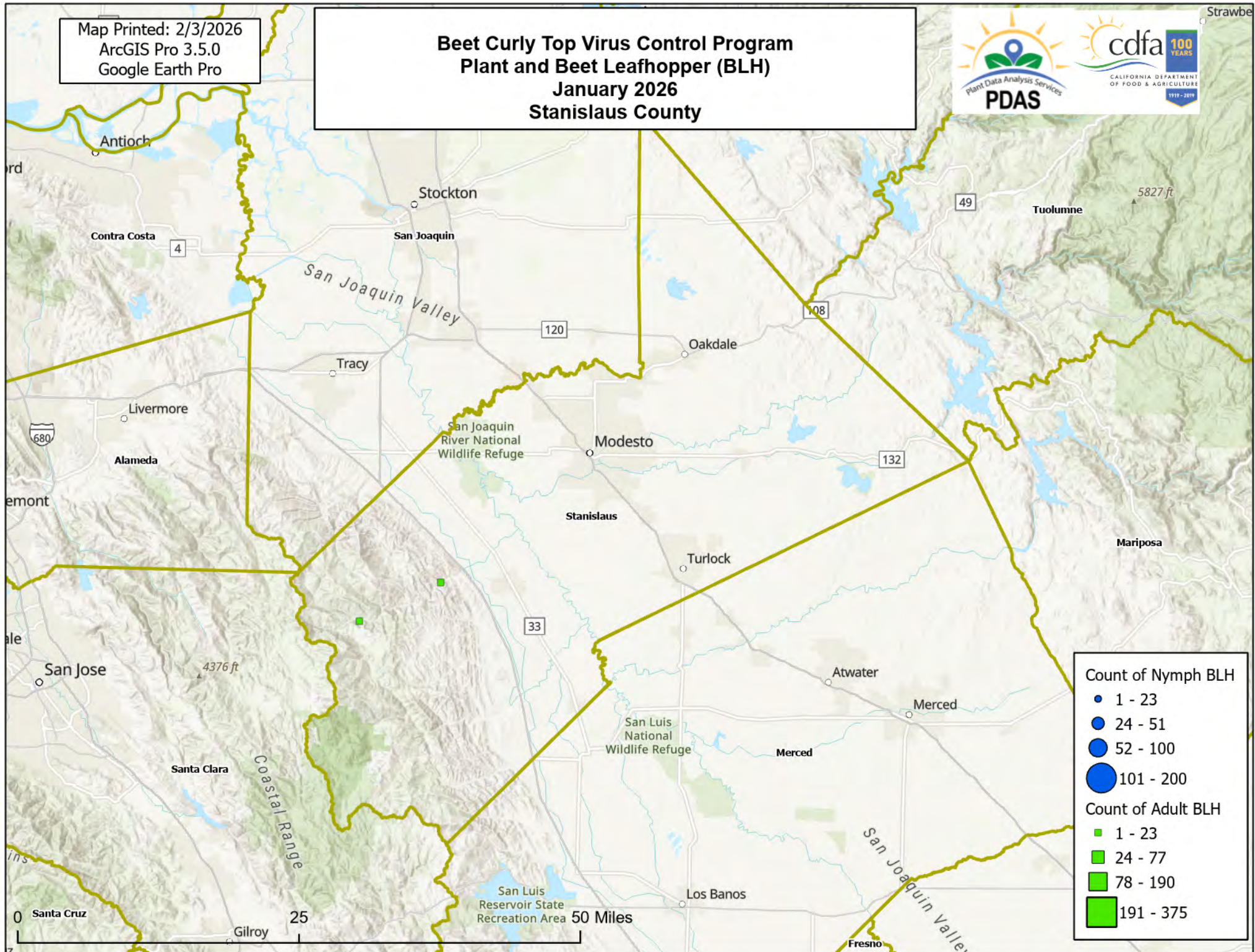
- 1 - 23
- 24 - 51
- 52 - 100
- 101 - 200

Count of Adult BLH

- 1 - 23
- 24 - 77
- 78 - 190
- 191 - 375

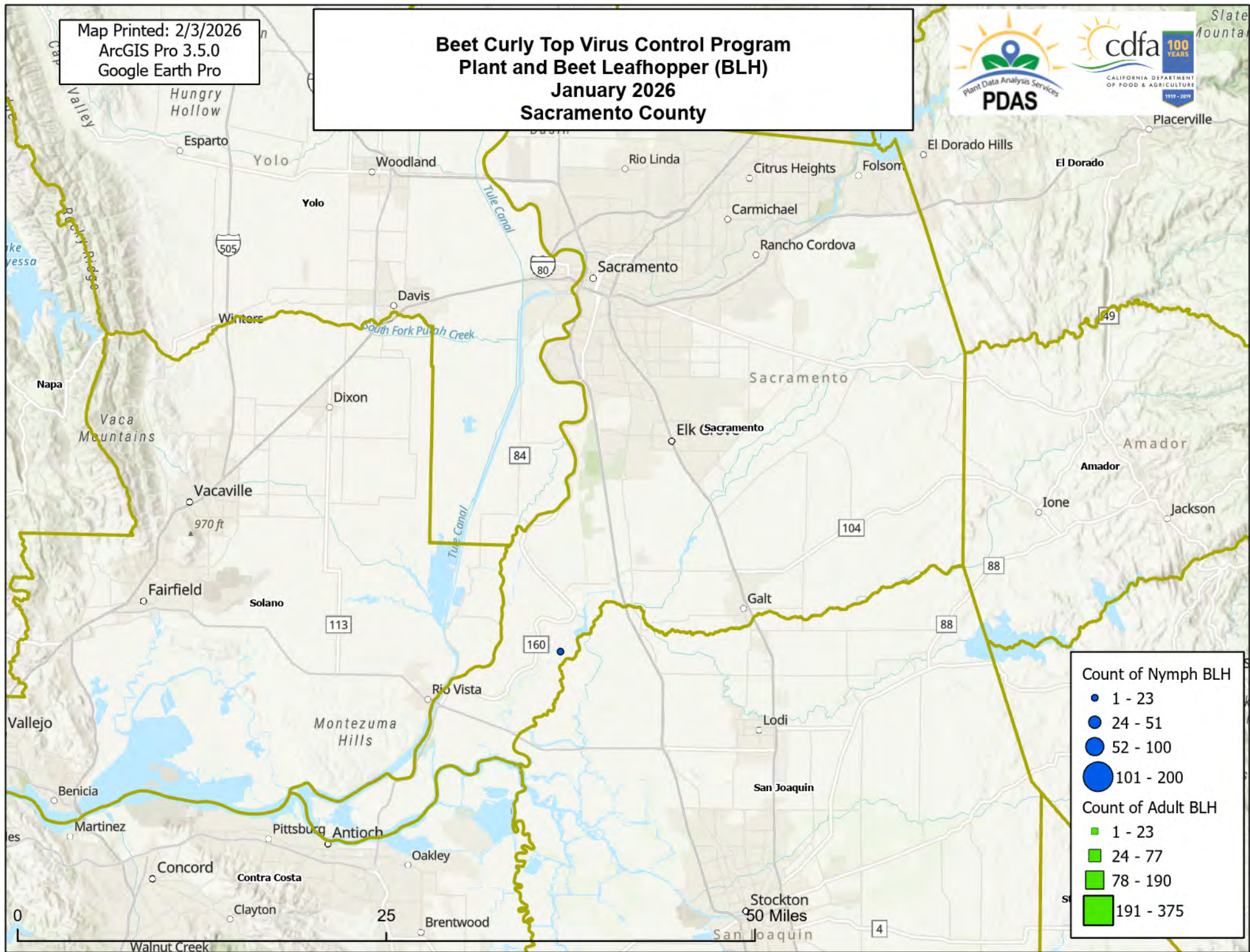
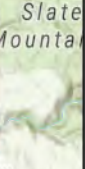
Map Printed: 2/3/2026
ArcGIS Pro 3.5.0
Google Earth Pro

Beet Curly Top Virus Control Program Plant and Beet Leafhopper (BLH) January 2026 Stanislaus County



Map Printed: 2/3/2026
ArcGIS Pro 3.5.0
Google Earth Pro

**Beet Curly Top Virus Control Program
Plant and Beet Leafhopper (BLH)
January 2026
Sacramento County**



Count of Nymph BLH

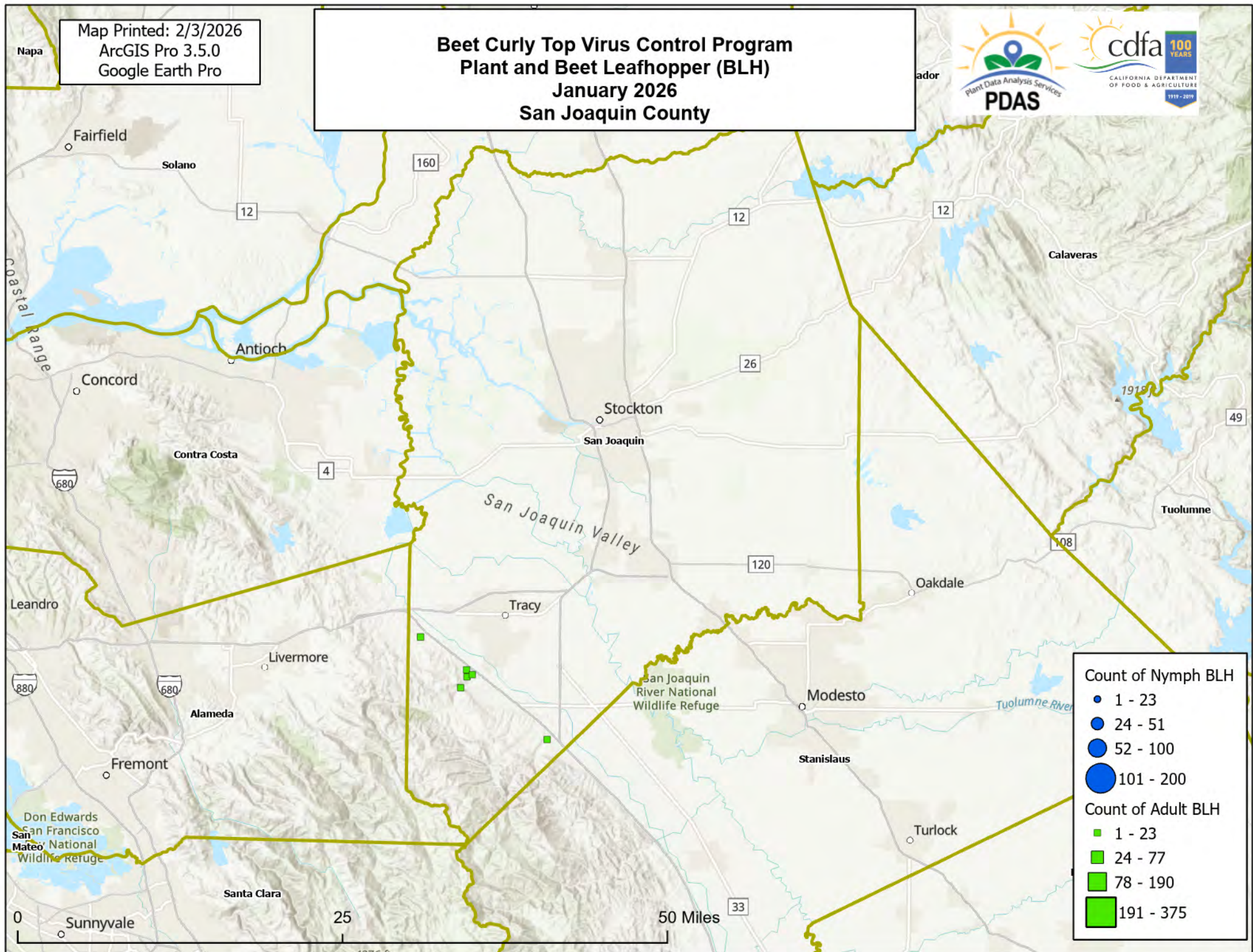
- 1 - 23
- 24 - 51
- 52 - 100
- 101 - 200

Count of Adult BLH

- 1 - 23
- 24 - 77
- 78 - 190
- 191 - 375

Map Printed: 2/3/2026
ArcGIS Pro 3.5.0
Google Earth Pro

Beet Curly Top Virus Control Program Plant and Beet Leafhopper (BLH) January 2026 San Joaquin County



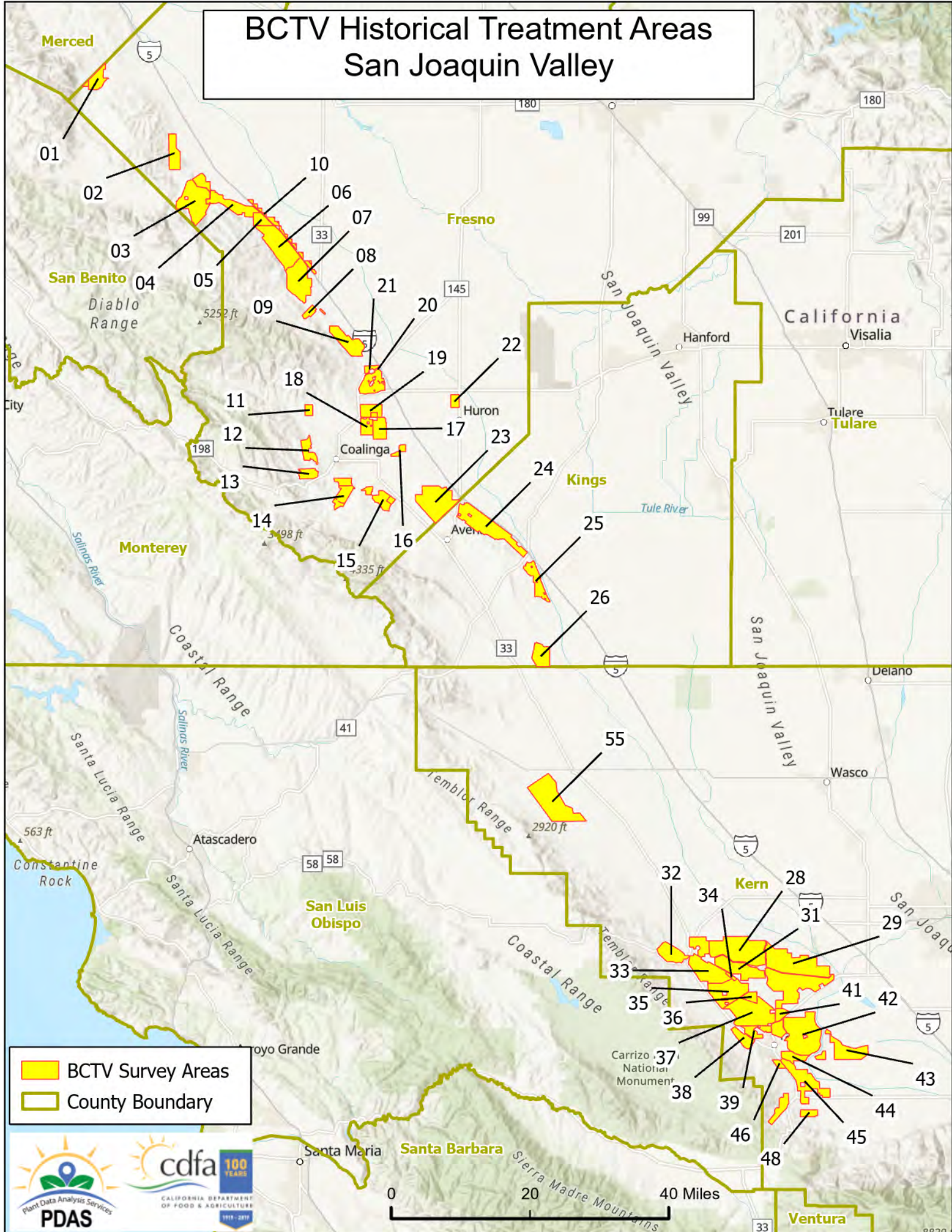
Count of Nymph BLH

- 1 - 23
- 24 - 51
- 52 - 100
- 101 - 200

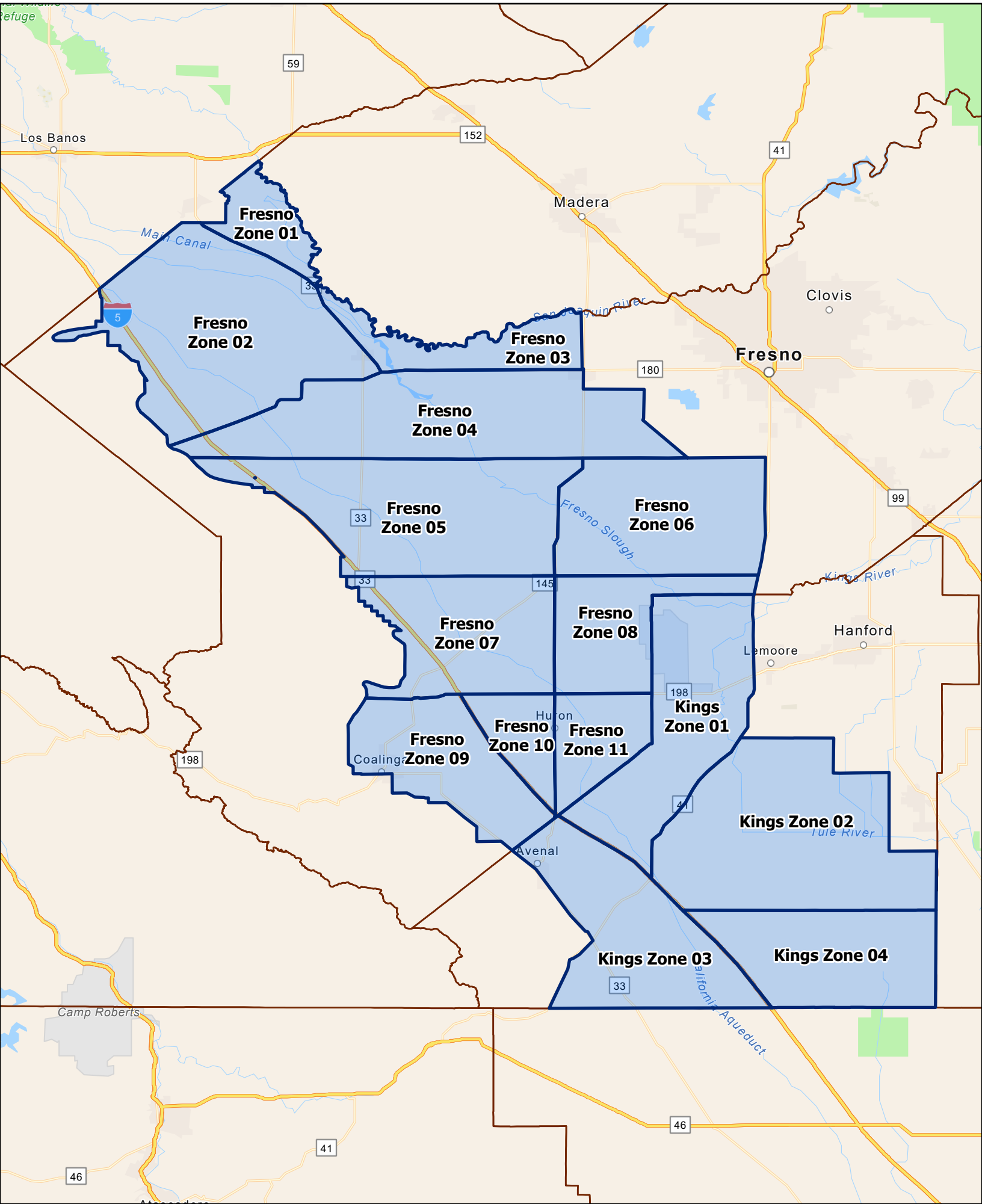
Count of Adult BLH

- 1 - 23
- 24 - 77
- 78 - 190
- 191 - 375

BCTV Historical Treatment Areas San Joaquin Valley



CTV Control Program Survey Zones Fresno & Kings Counties



CTV Control Program Survey Zones Kern County

