

# Beet Curly Top Virus Control Program

## Monthly Report

California Department of Food and Agriculture  
Plant Health and Pest Prevention Services  
Integrated Pest Control Branch  
2895 N. Larkin Ave, Suite A  
Fresno, CA 93727  
Phone: (559) 294-2031  
Fax: (559) 294-2037



---

---

September 2025

### Program Update

- In September, Beet Curly Top Virus Control Program (BCTVCP) personnel conducted beetle leafhopper (BLH) and vegetation surveys in the foothills on the westside of the San Joaquin and Sacramento Valleys in Butte, Colusa, Fresno, Glenn, Kern, Kings, Madera, Merced, Sacramento, San Joaquin, Solano, Stanislaus Sutter, and Yolo counties.
- BLH counts remained low in all survey areas statewide (0-1 BLH per sweep set).
- Commonly observed host vegetation is Bassia, Russian Thistle, Lamb's Quarter, Pig Weed, Mustard, Mallow, Salt Bush and Goosefoot that will be continuously monitored for BLH populations. Fallow fields and roadsides are being mapped for further monitoring and potential treatment for Fall.
- Program staff in Sacramento Valley surveyed Tomato and Cucumber and reported no damage from CTV. Commodities survey in the North will soon be finalized for the season.
- The Program would like to remind growers and PCA's that any fallow fields or weedy areas adjacent to susceptible crops should be inspected for BLH prior to disking or mowing. The Program can be available for BLH surveys and, if needed, control of fallow fields and/or roadsides where BLH counts reach the threshold triggers for control.
- Please visit the Program's webpage to view Program reports and alerts. [https://www.cdfa.ca.gov/plant/ipc/curlytopvirus/ctv\\_hp.htm](https://www.cdfa.ca.gov/plant/ipc/curlytopvirus/ctv_hp.htm)
- The BCTVCP has deployed a Beet Leafhopper Sighting Report that industry can use to report BLH or CTV incidence in the field. This report is available using the following web browser link: <https://arcg.is/O9LyK> or by downloading the ArcGIS Survey123 app from the Google Play Store or Apple App Store and using the QR code below. A user guide for the BLH Sighting Report is available on the BCTVCP webpage.



- For program inquiries or questions regarding this report, please contact Kendra Tapia at [kendra.tapia@cdfa.ca.gov](mailto:kendra.tapia@cdfa.ca.gov) or (916) 823-1169.

### 2025 Beet Curly Top Virus 3-Year Average BLH Counts

September County Average BLH Counts				
<u>County</u>	<u>2022</u>	<u>2023</u>	<u>2024</u>	<u>2025</u>
Fresno	0.6	0.5	0.5	0.06
Kings	0.3	0.3	0.1	0.1
Kern	0.2	0.07	0.03	0.05
Madera	-	-	0.1	0.2
Merced	0.3	-	0.2	0.1
Butte	-	0	0.1	0
Colusa	-	0.03	0.08	0.2
Glenn	-	0.04	0.1	0.3
Sacramento	-	-	0.4	0.03
San Joaquin	0.1	0.02	0.3	0.1
Stanislaus	0	0.1	0.1	0.1
Sutter	-	0.3	0.3	0.1
Solano	-	0.06	0.2	0.4
Yolo	-	0.08	0.3	0.1
Yuba	-	-	0.4	-

## 2025 Beet Curly Top Virus Sample Results

January 2025- BCTV Sample Results by County														
	Fresno	Kings	Kern	Merced	Madera	Glenn	Yolo	Colusa	Sutter	Butte	Solano	Sacramento	Stanislaus	San Joaquin
Positive BLH	-	1	-	-	-	-	-	-	-	-	-	-	-	-
Negative BLH	2	2	-	-	-	-	-	-	-	-	-	-	-	-
Positive Host Plant	1	-	-	-	-	-	-	-	-	-	-	-	-	-
Negative Host Plant	5	4	-	-	-	3	7	3	4	4	3	2	-	7

February 2025- BCTV Sample Results by County														
	Fresno	Kings	Kern	Merced	Madera	Glenn	Yolo	Colusa	Sutter	Butte	Solano	Sacramento	Stanislaus	San Joaquin
Positive BLH	6	3	1	-	-	-	-	-	-	-	-	-	-	-
Negative BLH	7	2	5	-	-	-	-	-	-	-	-	-	-	-
														-
Positive Host Plant	-	-	-	-	-	-	1	-	-	-	-	-	-	-
Negative Host Plant	72	21	27	12	10	10	6	4	6	2	10	2	9	7

[illegible]

April 2025- BCTV Sample Results by County														
	Fresno	Kings	Kern	Merced	Madera	Glenn	Yolo	Colusa	Sutter	Butte	Solano	Sacramento	Stanislaus	San Joaquin
Positive BLH	7	8	8	-	-	-	-	-	-	-	-	-	-	-
Negative BLH	2	1	-	-	-	-	-	-	-	-	-	-	1	-
Positive Host Plant	3	3	16	-	-	-	-	-	-	-	-	-	-	-
Negative Host Plant	27	14	81	2	-	7	6	6	6	5	6	4	7	8
Positive Tomato Plants	-	-	-	-	-	-	-	-	-	-	-	-	-	-
Negative Tomato Plants	-	-	-	-	-	-	2	3	5	-	2	-	-	-

May 2025- BCTV Sample Results by County																	
	Fresno	Kings	Kern	Merced	Madera	Glenn	Yolo	Colusa	Sutter	Butte	Solano	Sacramento	Stanislaus	San Joaquin	Imperial	Monterey	Riverside
Positive BLH	9	-	6	1	-	-	-	-	-	-	-	-	-	-	1	1	-
Negative BLH	-	-	-	-	-	-	-	-	-	-	-	-	1	-	-	-	2
Positive Host Plant	5	-	7	-	-	-	-	-	-	-	-	-	-	-	-	-	-
Negative Host Plant	9	-	24	1	1	2	3	2	5	2	4	-	3	6	5	2	4
Positive Tomato Plants	-	-	34	-	-	-	2	-	-	-	-	-	-	1	-	-	-
Negative Tomato Plants	14	3	23	-	-	3	14	7	14	-	6	-	8	2	1	-	-

June 2025- BCTV Sample Results by County															
	Fresno	Kings	Kern	Merced	Madera	Glenn	Yolo	Colusa	Sutter	Butte	Solano	Sacramento	Stanislaus	San Joaquin	Tulare
Positive BLH	-	-	5	-	1	-	-	-	-	-	-	-	1	-	-
Negative BLH	-	-	-	-	-	-	-	-	-	-	-	-	-	-	-
Positive Host Plant	4	-	11	-	1	-	-	-	-	-	-	-	1	-	-
Negative Host Plant	5	-	29	1	1	3	3	3	2	-	3	-	1	1	-
Positive Tomato Plants	40	13	38	15	1	-	-	1	-	-	-	-	10	9	-
Negative Tomato Plants	22	9	19	11	3		29	12	9	-	17	-	5	4	1

### July 2025- BCTV Sample Results by County

	Fresno	Kings	Kern	Merced	Madera	Glenn	Yolo	Colusa	Sutter	Butte	Solano	Sacramento	Stanislaus	San Joaquin	Tehama
Positive BLH	4	-	3	-	5	-	-	-	-	-	-	-	-	-	-
Negative BLH	2	-	-	-	-	-	-	-	-	-	-	-	-	-	-
Positive Host Plant	17	1	25	-	5	-	-	1	-	1	-	-	1	-	-
Negative Host Plant	13	6	23	6	9	1	5	-	2	2	-	-	2	1	2
Positive Tomato Plants	13	6	5	14	-	-	1	4	-	-	1	1	3	1	-
Negative Tomato Plants	3	1	3	5	-	2	16	12	3	-	4	1	-	9	3

### August 2025- BCTV Sample Results by County

	Fresno	Kings	Kern	Merced	Madera	Glenn	Yolo	Colusa	Sutter	Butte	Solano	Sacramento	Stanislaus	San Joaquin	Tehama
Positive BLH	-	-	-	-	-	-	-	-	-	-	-	-	1	-	-
Negative BLH	-	-	1	-	-	-	-	-	-	-	-	-	-	-	-
Positive Host Plant	3	-	19	2	1	-	-	-	-	-	-	-	8	-	-
Negative Host Plant	6	2	32	4	2	8	1	6	5	3	-	-	3	1	-
Positive Tomato Plants	2	-	-	-	-	-	-	-	1	-	-	-	-	4	-
Negative Tomato Plants	-	4	-	-	-	-	5	3	7	-	-	-	-	11	-

### September 2025- BCTV Sample Results by County

[illegible]

## County Reports

### Fresno County

- BLH population surveys were conducted in the overwintering foothills as well as in fallow fields and roadsides within five miles of the foothills.
- Overall counts remained low throughout survey areas, averaging 0-1 BLH per sweep set.
- Host plant vegetation surveyed included Russian Thistle and Bassia.
- A map identifying the location of the BLH counts is provided at the end of the report.

Fresno County BLH Survey		
<u>Location</u>	<u>Date</u>	<u>Average # of BLH per sweep set</u>
Fresno Zone 02	9/1-9/30	0.1
Fresno Zone 03	9/1-9/30	0.02
Fresno Zone 04	9/1-9/30	0.08
Fresno Zone 05	9/1-9/30	0.02
Fresno Zone 09	9/1-9/30	0.1

### Kern County

- BLH population surveys were conducted in the overwintering foothills as well as in fallow fields and roadsides within five miles of the foothills.
- Overall counts remained low throughout survey areas, averaging 0-1 BLH per sweep set.
- Host plant vegetation surveyed included Russian Thistle, Bassia, Mallow, Lamb's Quarter, Goosefoot, and Pig Weed.
- A map identifying the location of the BLH counts is provided at the end of the report.

Kern County BLH Survey		
<u>Location</u>	<u>Date</u>	<u>Average # of BLH per sweep set</u>
Kern Zone 01	9/1-9/30	0.1
Kern Zone 02	9/1-9/30	0.1
Kern Zone 04	9/1-9/30	0.04
Kern Zone 05	9/1-9/30	0.03
Kern Zone 09	9/1-9/30	0.1
Kern Zone 10	9/1-9/30	0.03
Kern Zone 11	9/1-9/30	0.1

### Kings County

- BLH population surveys were conducted in the overwintering foothills as well as in fallow fields and roadsides within five miles of the foothills.
- Overall counts remained low throughout survey areas, averaging 0-1 BLH per sweep set.
- Host plant vegetation surveyed included Russian Thistle and Bassia.
- A map identifying the location of the BLH counts is provided at the end of the report.

Kings County BLH Survey		
<u>Location</u>	<u>Date</u>	<u>Average # of BLH per sweep set</u>
Kings Zone 01	9/1-9/30	0.07
Kings Zone 02	9/1-9/30	0.03
Kings Zone 03	9/1-9/30	0.2
Kings Zone 04	9/1-9/30	0.1

### Madera County

- BLH population surveys were conducted in fallow fields and roadsides within five miles of the foothills.
- Overall counts remained low throughout the survey areas, averaging 0-1 BLH per sweep set.
- Host vegetation surveyed included Mallow, Lamb's Quarter, Salt Bush, Bassia, Kochia, Pig Weed, and Russian Thistle.
- A map identifying BLH counts is provided at the end of the report.

Madera County BLH Survey		
<u>Location</u>	<u>Date</u>	<u>Average # of BLH per sweep set</u>
Madera Zone 01	9/1-9/30	0.2

### Merced County

- BLH population surveys were conducted in fallow fields and roadsides within five miles of the foothills.
- Overall counts remained low throughout the survey areas, averaging 0-1 BLH per sweep set.
- Host vegetation surveyed included Bassia, Pig Weed, Kochia, Purslane, Mallow, Salt Bush, and Russian Thistle.
- A map identifying BLH counts is provided at the end of the report.

Merced County BLH Survey		
<u>Location</u>	<u>Date</u>	<u>Average # of BLH per sweep set</u>
Merced Zone 01	9/1-9/30	0.1

### San Joaquin County

- BLH population surveys were conducted in fallow fields and roadsides within five miles of the foothills.
- Overall counts remained low throughout the survey areas, averaging 0-1 BLH per sweep set.
- Host vegetation surveyed included Mallow, Lamb's Quarter, Medic, and Russian Thistle.
- A map identifying BLH counts is provided at the end of the report.

San Joaquin County BLH Survey		
<u>Location</u>	<u>Date</u>	<u>Average # of BLH per sweep set</u>
San Joaquin Zone 01	9/1-9/30	0.1

### Colusa County

- BLH population surveys were conducted in fallow fields and roadsides within five miles of the foothills.
- Overall counts remained low throughout the survey areas, averaging 0-1 BLH per sweep set.
- Host vegetation surveyed included Mallow, Bassia, Pig Weed, Bindweed, and Russian Thistle.
- A map identifying BLH counts is provided at the end of the report.

Colusa County BLH Survey		
<u>Location</u>	<u>Date</u>	<u>Average # of BLH per sweep set</u>
Colusa Zone 01	9/1-9/30	0.2

### Yolo County

- BLH population surveys were conducted in fallow fields and roadsides within five miles of the foothills.
- Overall counts remained very low throughout the survey areas, averaging 0-1 BLH per sweep set.
- Host vegetation surveyed included Mallow and Russian Thistle.



- A map identifying BLH counts is provided at the end of the report.

Yolo County BLH Survey		
<u>Location</u>	<u>Date</u>	<u>Average # of BLH per sweep set</u>
Yolo Zone 01	9/1-9/30	0.1

### Sutter County

- BLH population surveys were conducted in fallow fields and roadsides within five miles of the foothills.
- Overall counts remained very low throughout the survey areas, averaging 0-1 BLH per sweep set.
- Host vegetation surveyed included Mallow, Lamb's Quarter, Russian Thistle, and Salt Bush.
- A map identifying BLH counts is provided at the end of the report.

Sutter County BLH Survey		
<u>Location</u>	<u>Date</u>	<u>Average # of BLH per sweep set</u>
Sutter Zone 01	9/1-9/30	0.1

### Stanislaus County

- BLH population surveys were conducted in fallow fields and roadsides within five miles of the foothills.
- Overall counts remained very low throughout the survey areas, averaging 0-1 BLH per sweep set.
- Host vegetation surveyed included Kochia, Bassia, Mallow, Mustards, Pig Weed, Russian Thistle, and Salt Bush.
- A map identifying BLH counts is provided at the end of the report.

Stanislaus County BLH Survey		
<u>Location</u>	<u>Date</u>	<u>Average # of BLH per sweep set</u>
Stanislaus Zone 01	9/1-9/30	0.1

### Glenn County

- BLH population surveys were conducted in fallow fields and roadsides within five miles of the foothills.
- Overall counts remained very low throughout the survey areas, averaging 0-1

BLH per sweep set.

- Host vegetation surveyed included Russian Thistle, Pig Weed, Purslane, and Mallow.
- A map identifying BLH counts is provided at the end of the report.

Glenn County BLH Survey		
<u>Location</u>	<u>Date</u>	<u>Average # of BLH per sweep set</u>
Glenn Zone 01	9/1-9/30	0.3

### Butte County

- BLH population surveys were conducted in fallow fields and roadsides within five miles of the foothills.
- No BLH were observed in Butte County during survey.
- Host vegetation surveyed included Bindweed and Mallow.

### Sacramento County

- BLH population surveys were conducted in fallow fields and roadsides within five miles of the foothills.
- Overall counts remained very low throughout the survey areas, averaging 0-1 BLH per sweep set.
- Host vegetation surveyed included Mallow, Bassia, and Russian Thistle.
- A map identifying BLH counts is provided at the end of the report.

Sacramento County BLH Survey		
<u>Location</u>	<u>Date</u>	<u>Average # of BLH per sweep set</u>
Sacramento Zone 01	9/1-9/30	0.03

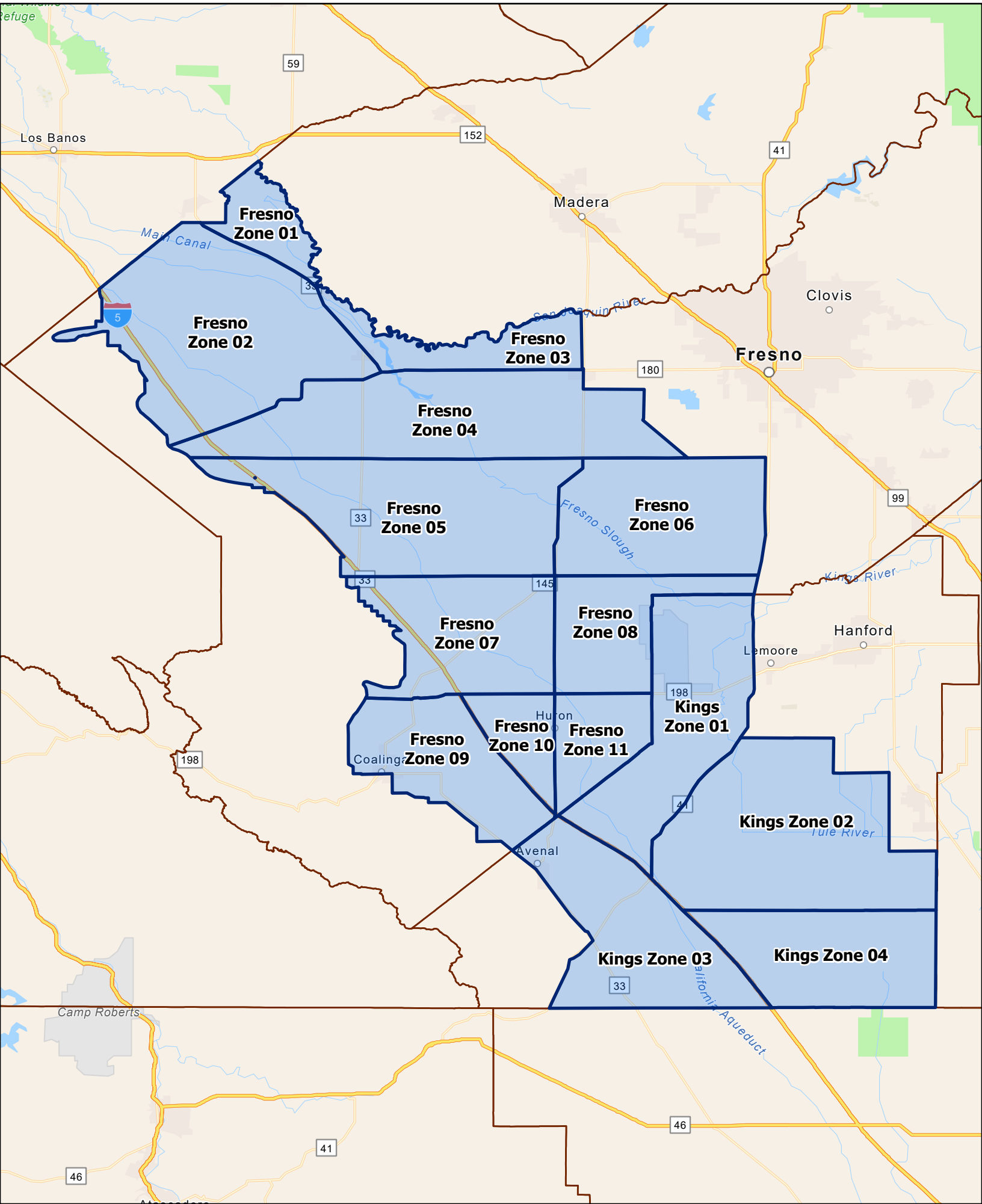
### Solano County

- BLH population surveys were conducted in fallow fields and roadsides within five miles of the foothills.
- Overall counts remained very low throughout the survey areas, averaging 0-1 BLH per sweep set.
- Host vegetation surveyed included Bassia, Lamb's Quarter, Mallow, Bindweed, Pig Weed, Purslane, and Russian Thistle.
- A map identifying BLH counts is provided at the end of the report.

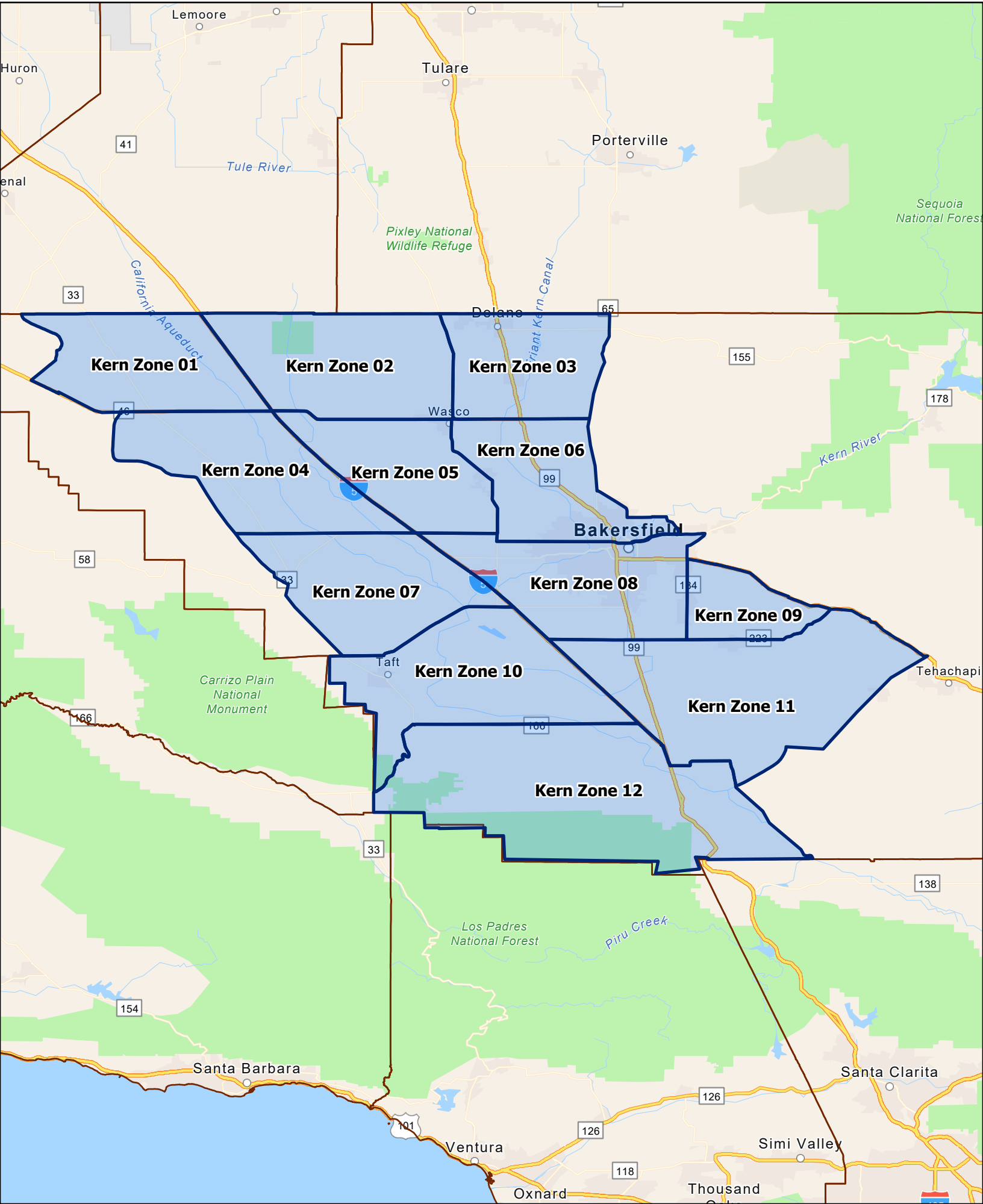
Solano County BLH Survey		
<u>Location</u>	<u>Date</u>	<u>Average # of BLH per sweep set</u>
Solano Zone 01	9/1-9/30	0.4

To subscribe to the BCTV monthly report, updates, and alerts, please use the link below:  
[www.cdfa.ca.gov/subscriptions/](http://www.cdfa.ca.gov/subscriptions/)

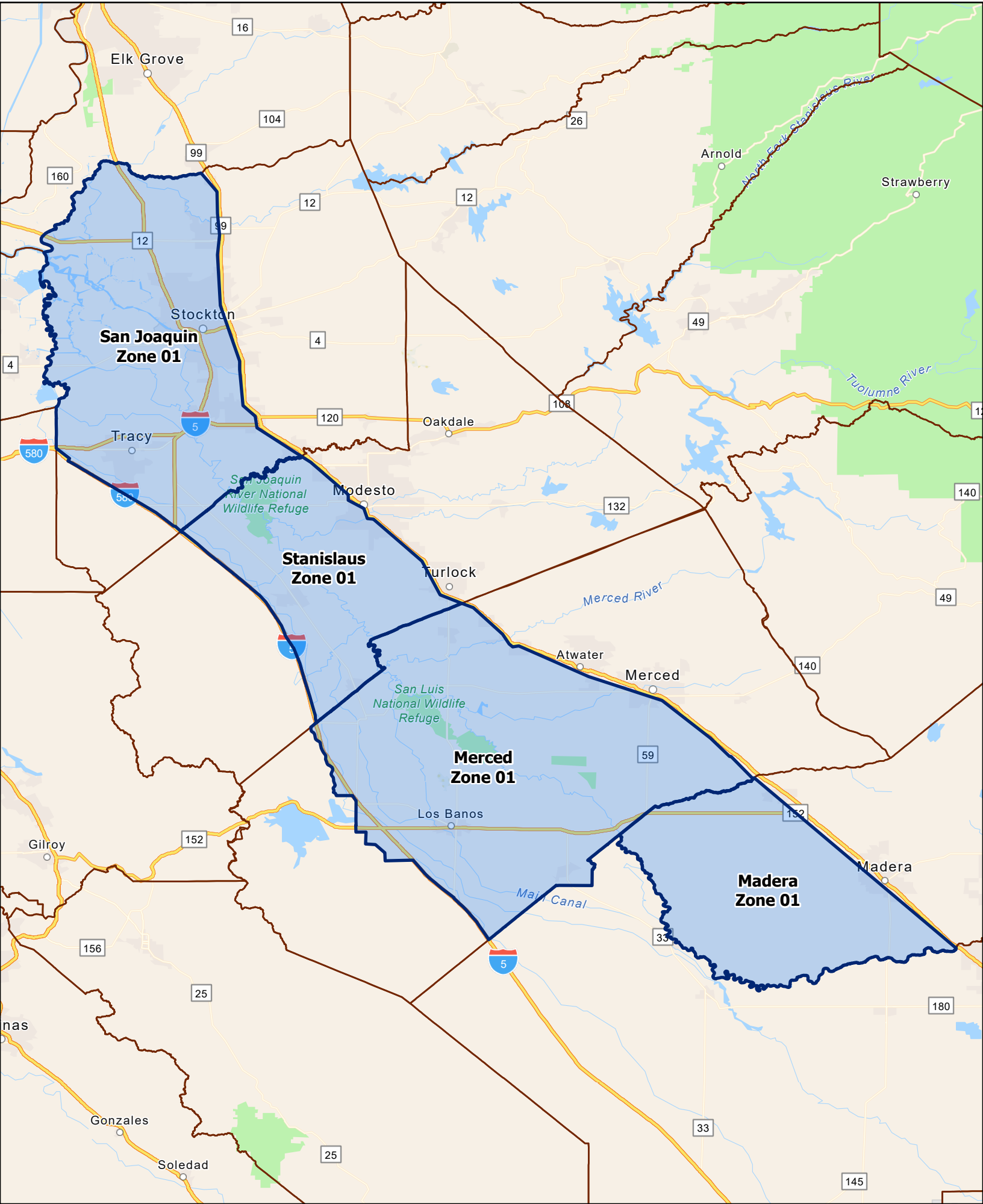
# CTV Control Program Survey Zones Fresno & Kings Counties

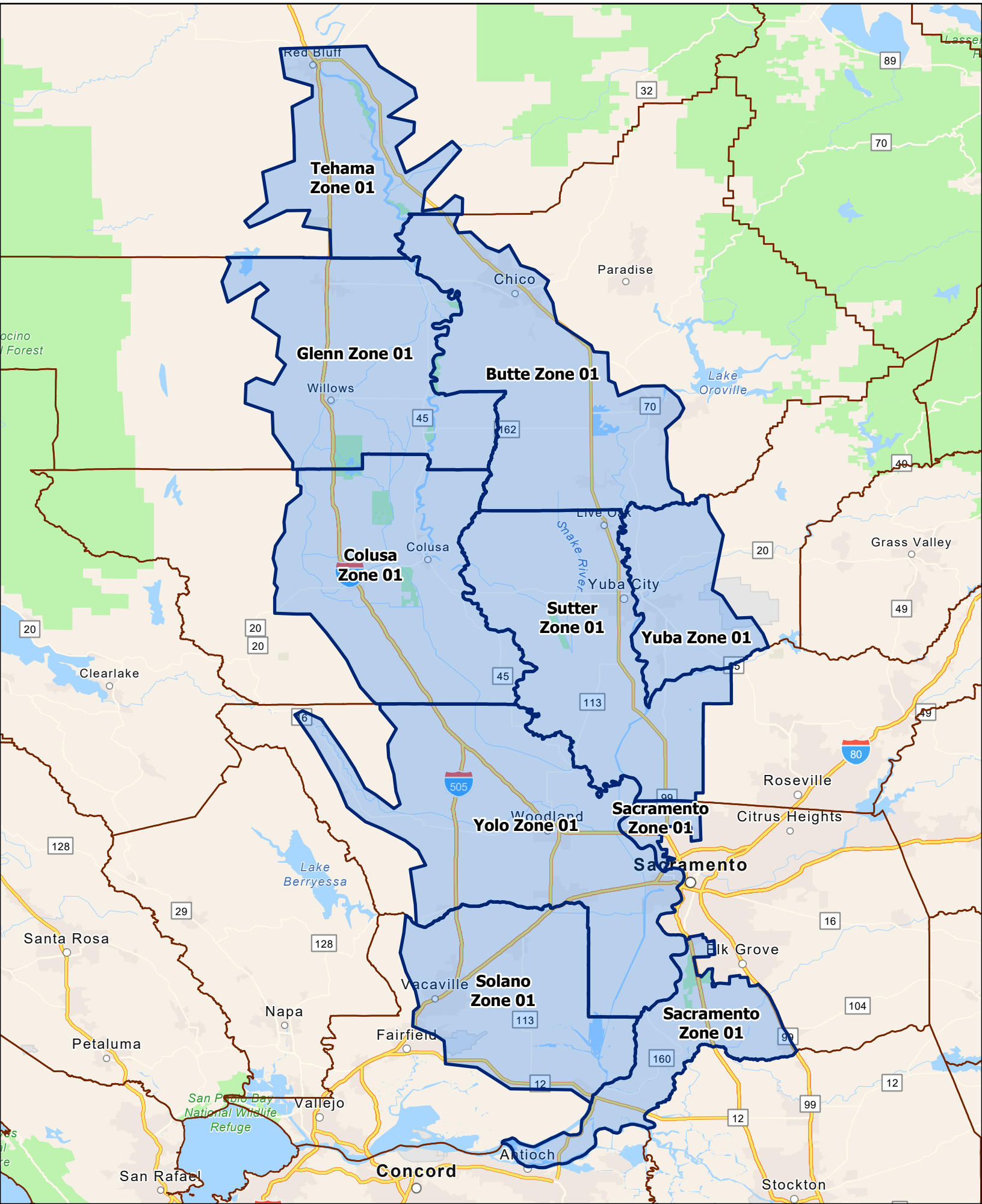


# CTV Control Program Survey Zones Kern County



CTV Control Program Survey Zones  
Madera, Merced, Stanislaus & San Joaquin Counties

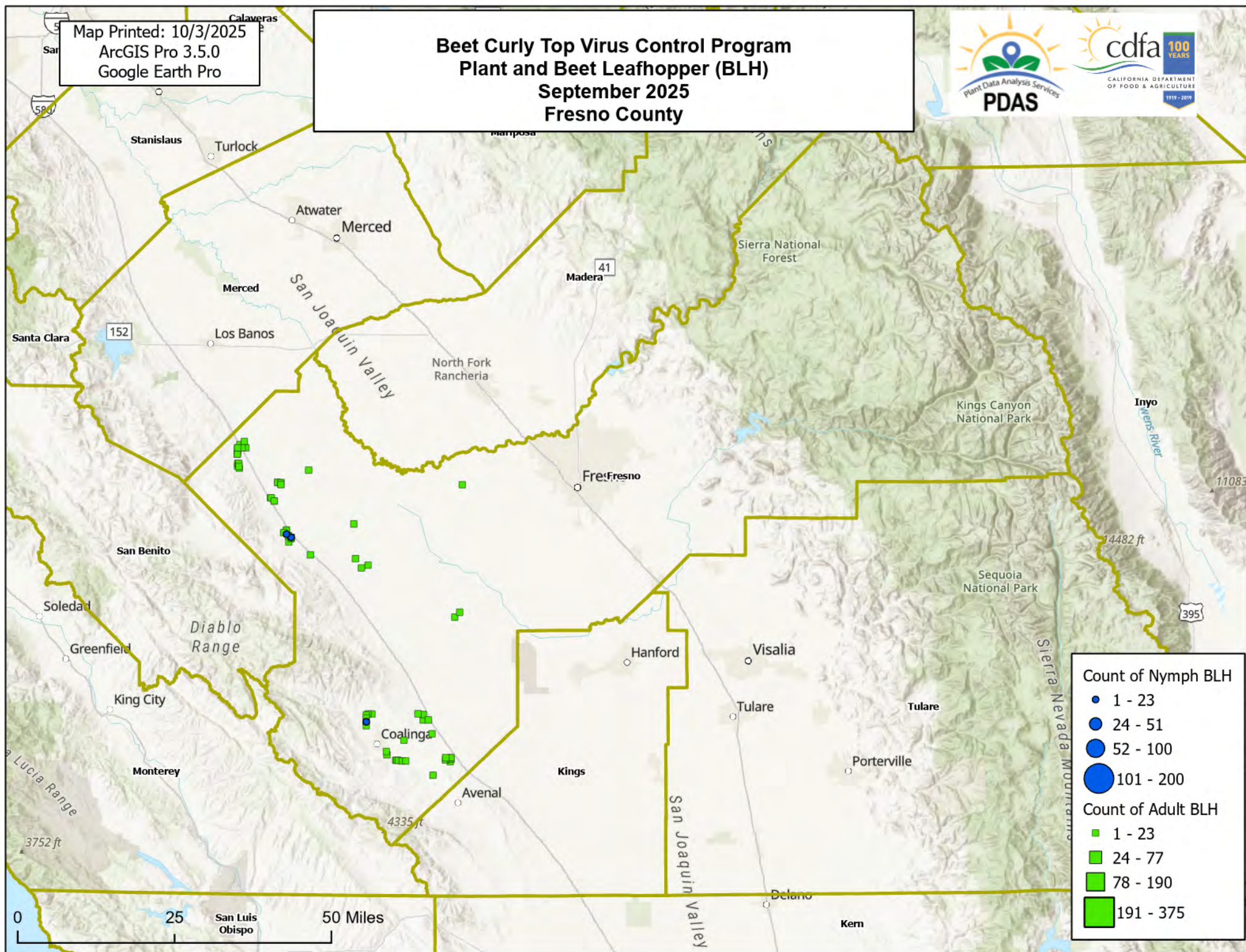






Map Printed: 10/3/2025  
ArcGIS Pro 3.5.0  
Google Earth Pro

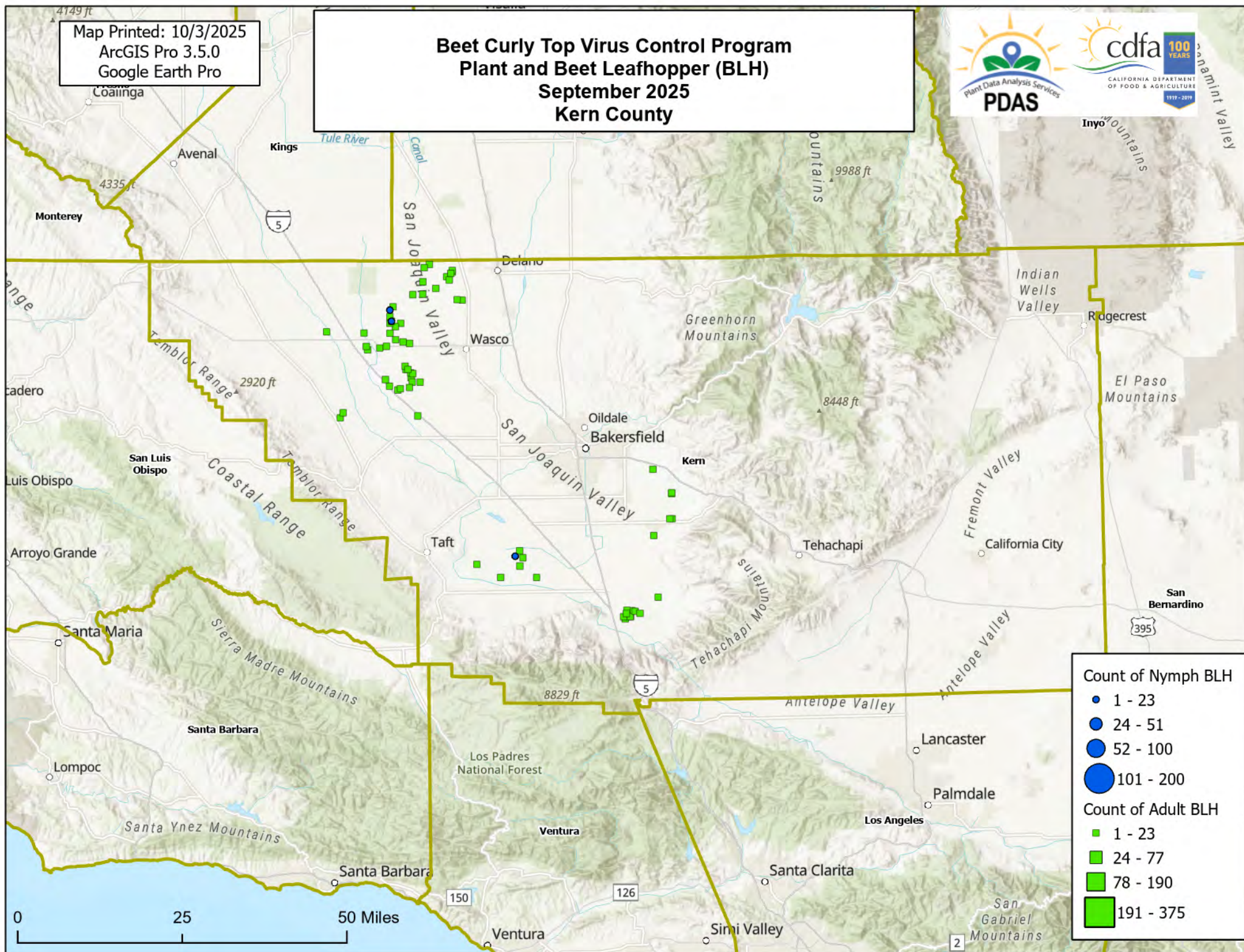
# Beet Curly Top Virus Control Program Plant and Beet Leafhopper (BLH) September 2025 Fresno County





Map Printed: 10/3/2025  
ArcGIS Pro 3.5.0  
Google Earth Pro

# Beet Curly Top Virus Control Program Plant and Beet Leafhopper (BLH) September 2025 Kern County



## Count of Nymph BLH

- 1 - 23
- 24 - 51
- 52 - 100
- 101 - 200

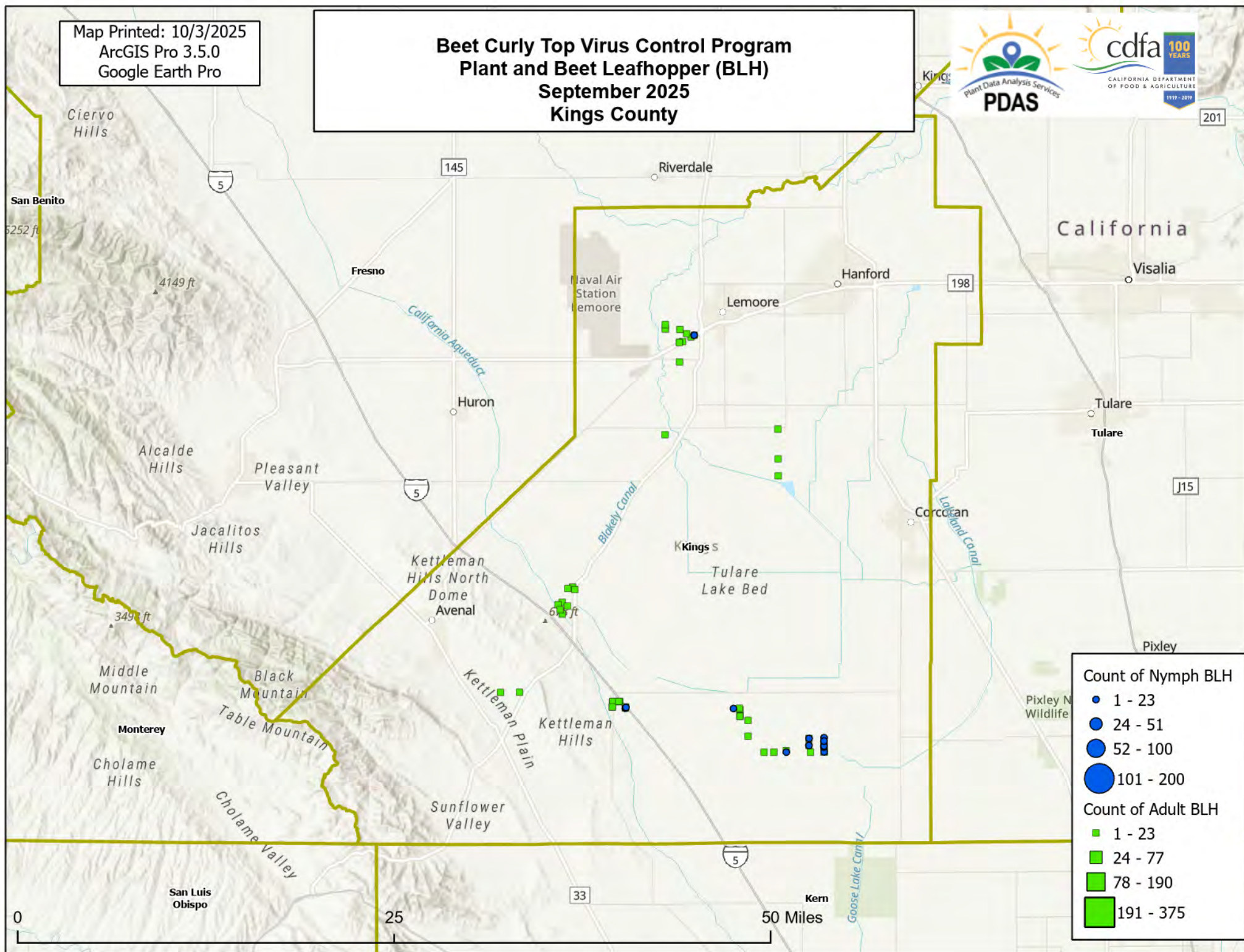
## Count of Adult BLH

- 1 - 23
- 24 - 77
- 78 - 190
- 191 - 375



Map Printed: 10/3/2025  
ArcGIS Pro 3.5.0  
Google Earth Pro

# Beet Curly Top Virus Control Program Plant and Beet Leafhopper (BLH) September 2025 Kings County



## Count of Nymph BLH

- 1 - 23
- 24 - 51
- 52 - 100
- 101 - 200

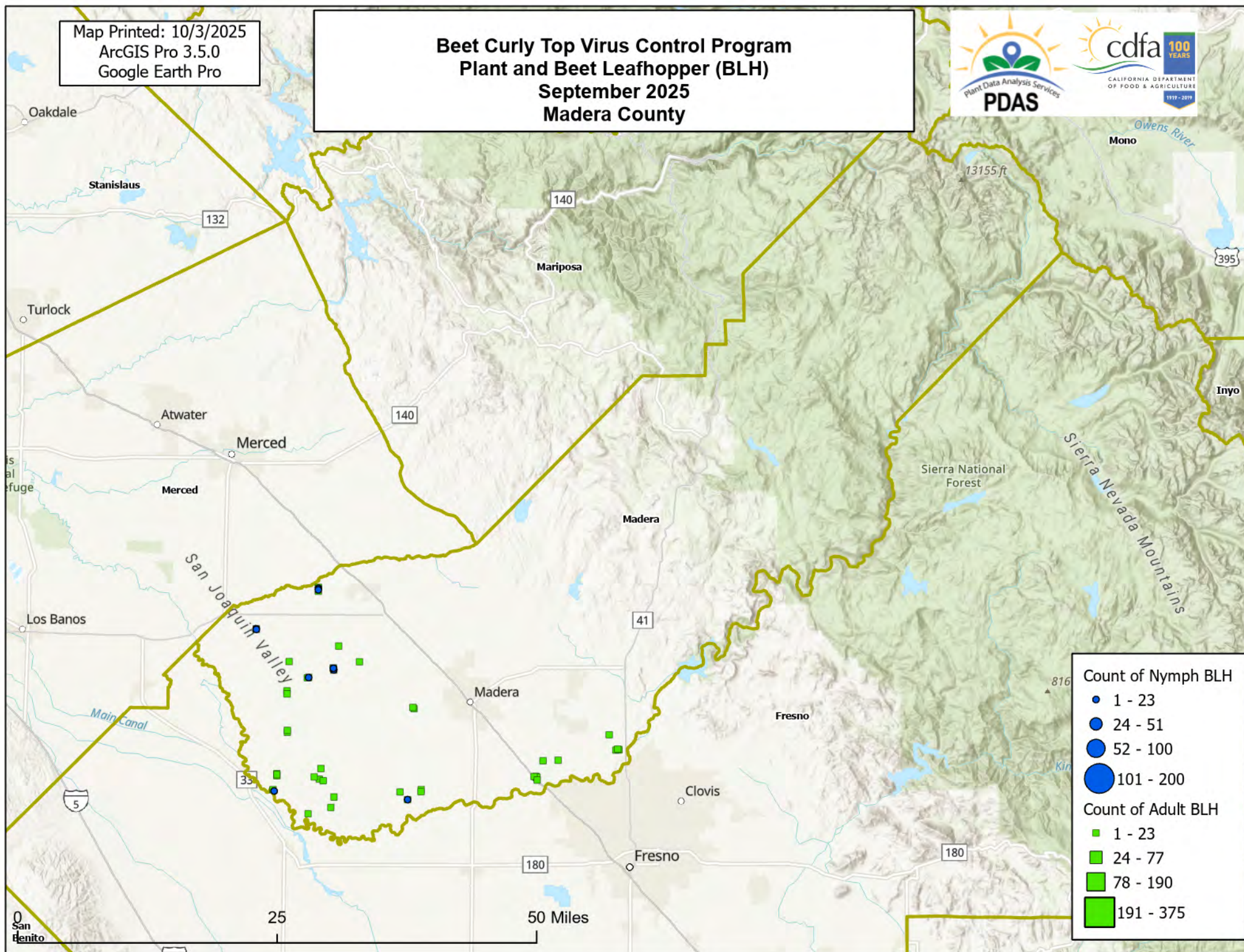
## Count of Adult BLH

- 1 - 23
- 24 - 77
- 78 - 190
- 191 - 375



Map Printed: 10/3/2025  
ArcGIS Pro 3.5.0  
Google Earth Pro

# Beet Curly Top Virus Control Program Plant and Beet Leafhopper (BLH) September 2025 Madera County



## Count of Nymph BLH

- 1 - 23
- 24 - 51
- 52 - 100
- 101 - 200

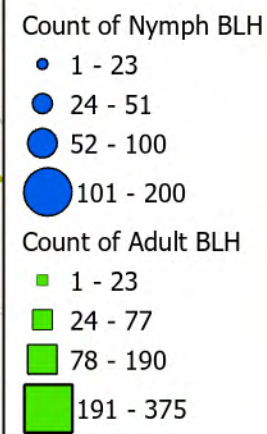
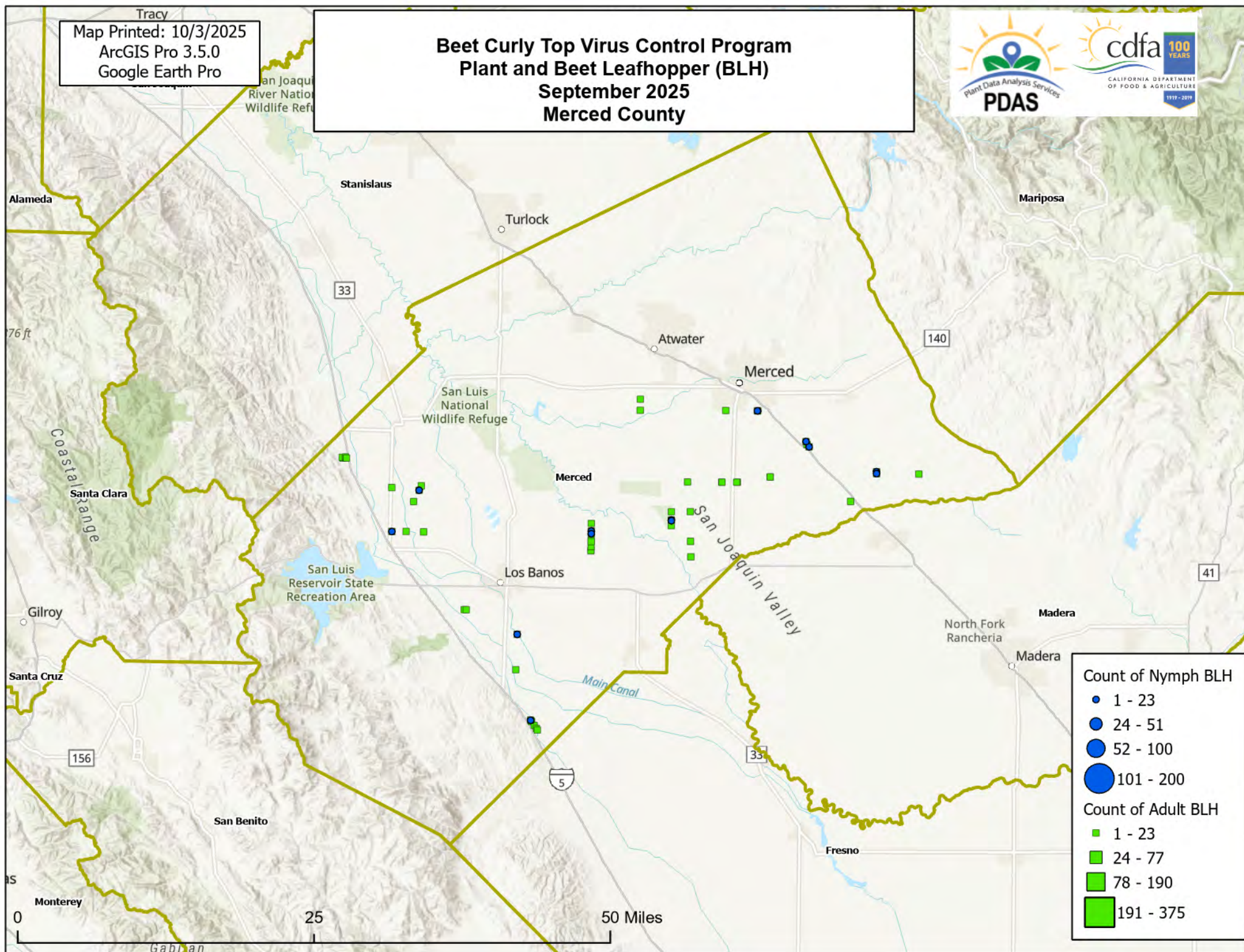
## Count of Adult BLH

- 1 - 23
- 24 - 77
- 78 - 190
- 191 - 375



Map Printed: 10/3/2025  
ArcGIS Pro 3.5.0  
Google Earth Pro

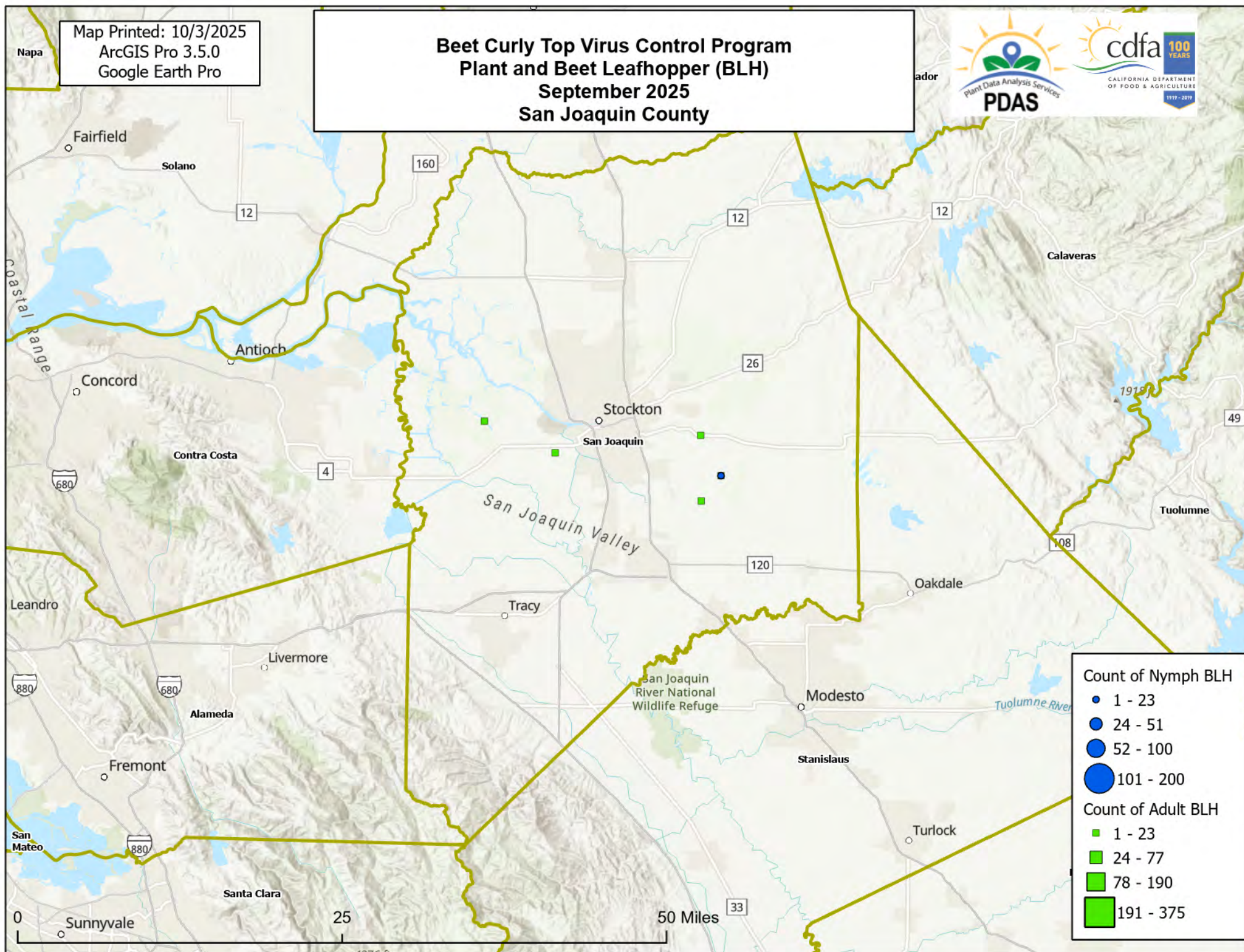
# Beet Curly Top Virus Control Program Plant and Beet Leafhopper (BLH) September 2025 Merced County





Map Printed: 10/3/2025  
ArcGIS Pro 3.5.0  
Google Earth Pro

# Beet Curly Top Virus Control Program Plant and Beet Leafhopper (BLH) September 2025 San Joaquin County



## Count of Nymph BLH

- 1 - 23
- 24 - 51
- 52 - 100
- 101 - 200

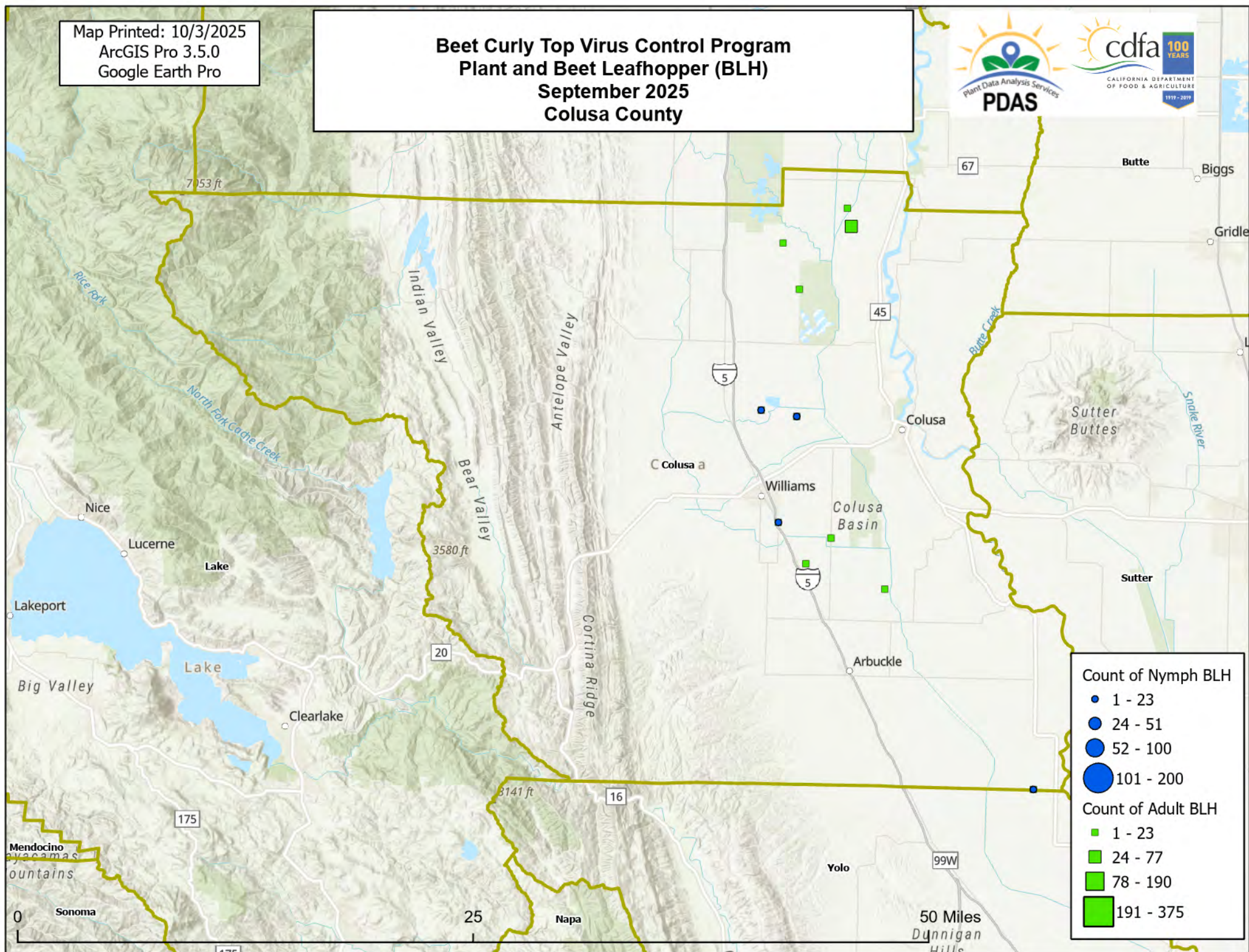
## Count of Adult BLH

- 1 - 23
- 24 - 77
- 78 - 190
- 191 - 375



Map Printed: 10/3/2025  
ArcGIS Pro 3.5.0  
Google Earth Pro

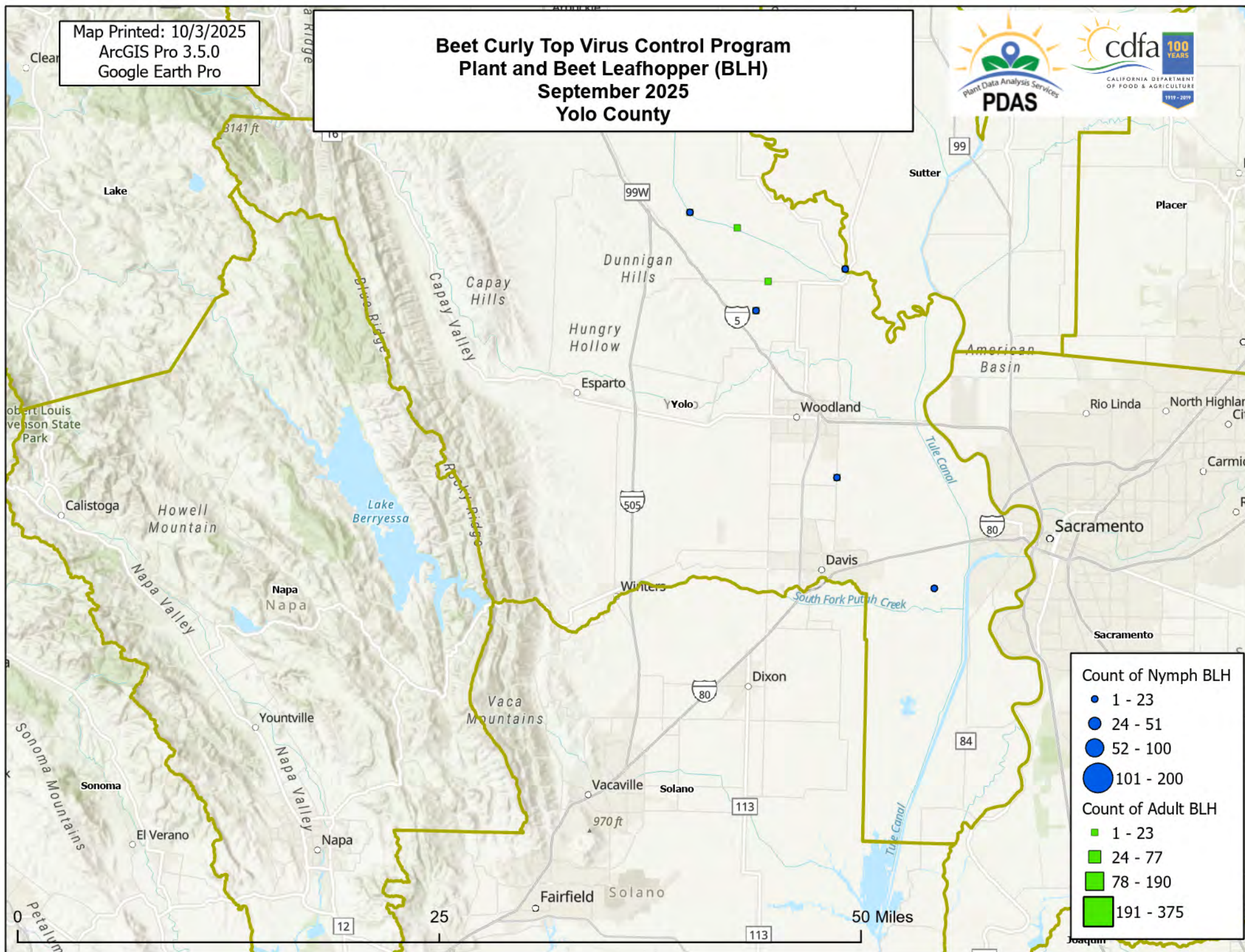
# Beet Curly Top Virus Control Program Plant and Beet Leafhopper (BLH) September 2025 Colusa County





Map Printed: 10/3/2025  
ArcGIS Pro 3.5.0  
Google Earth Pro

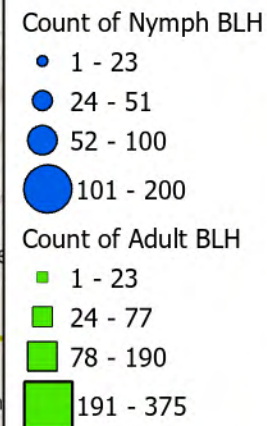
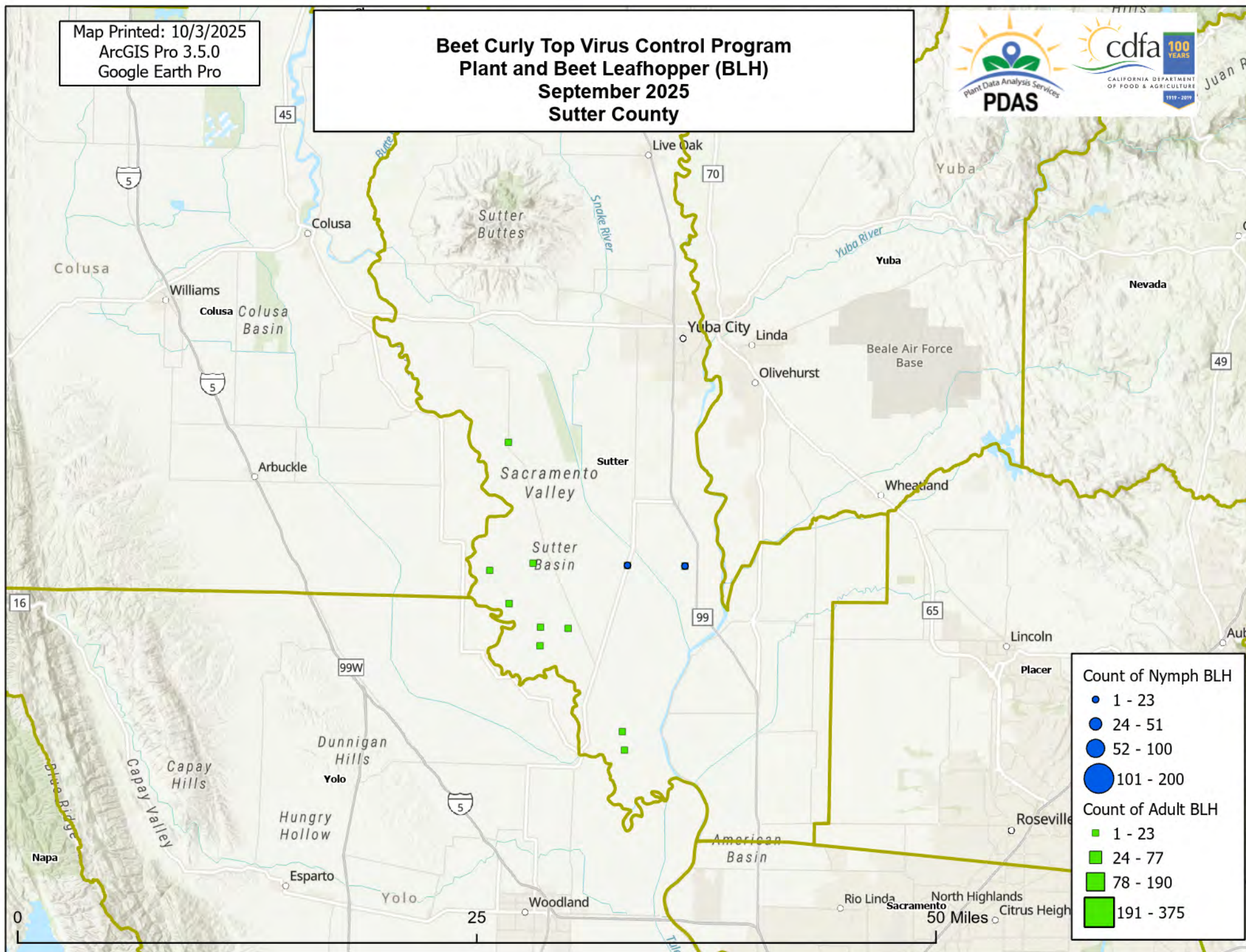
# Beet Curly Top Virus Control Program Plant and Beet Leafhopper (BLH) September 2025 Yolo County





Map Printed: 10/3/2025  
ArcGIS Pro 3.5.0  
Google Earth Pro

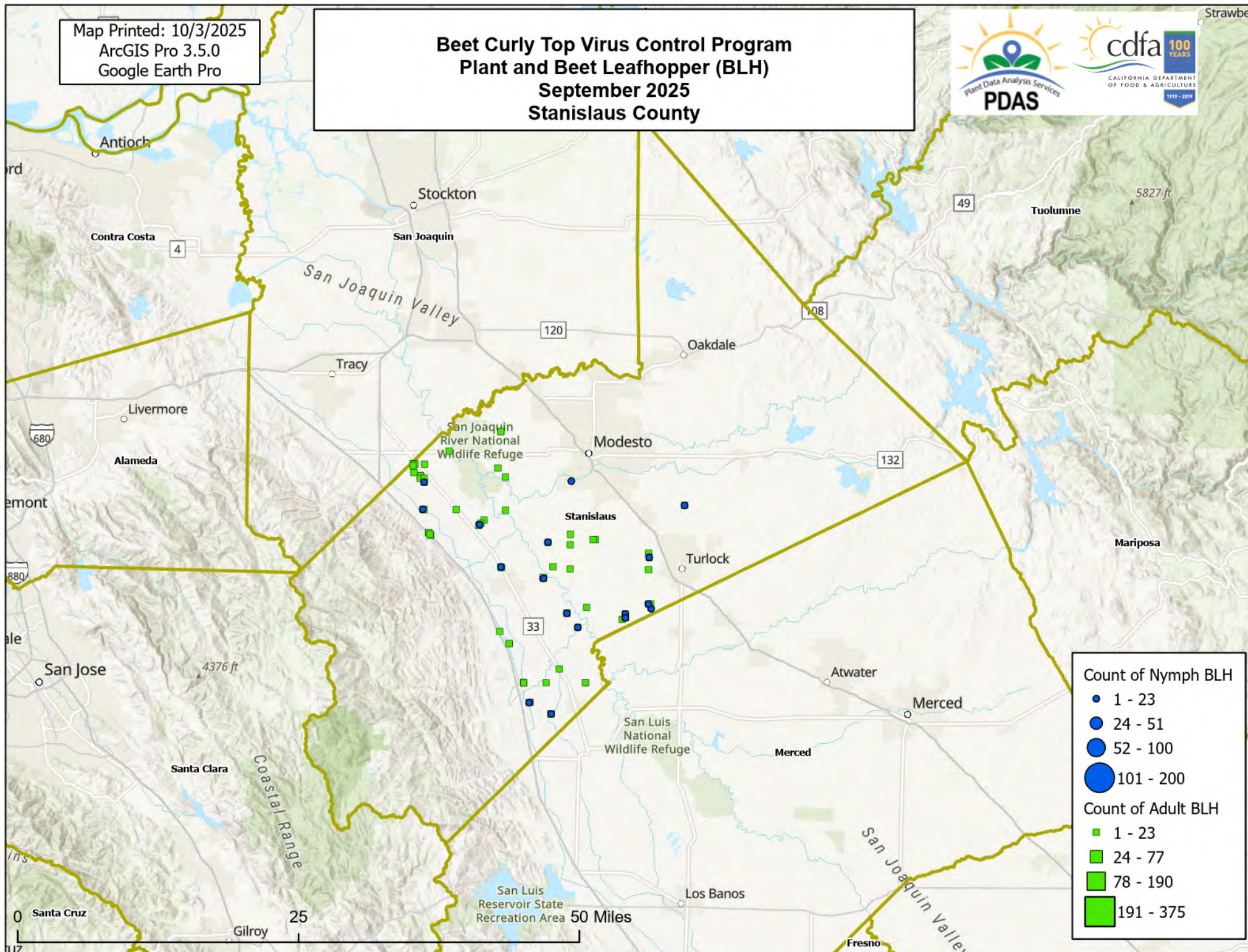
# Beet Curly Top Virus Control Program Plant and Beet Leafhopper (BLH) September 2025 Sutter County





Map Printed: 10/3/2025  
ArcGIS Pro 3.5.0  
Google Earth Pro

# Beet Curly Top Virus Control Program Plant and Beet Leafhopper (BLH) September 2025 Stanislaus County



## Count of Nymph BLH

- 1 - 23
- 24 - 51
- 52 - 100
- 101 - 200

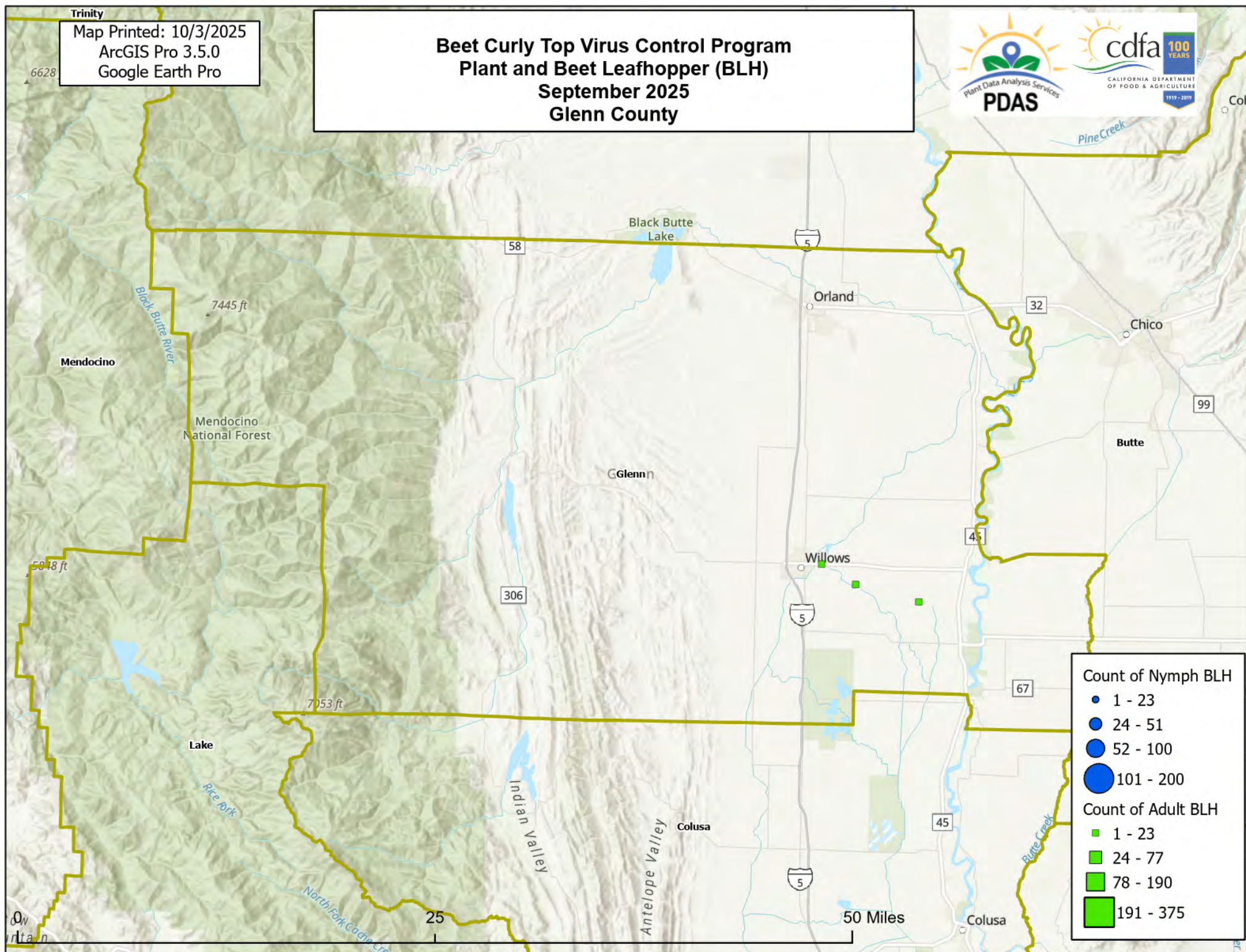
## Count of Adult BLH

- 1 - 23
- 24 - 77
- 78 - 190
- 191 - 375



Map Printed: 10/3/2025  
ArcGIS Pro 3.5.0  
Google Earth Pro

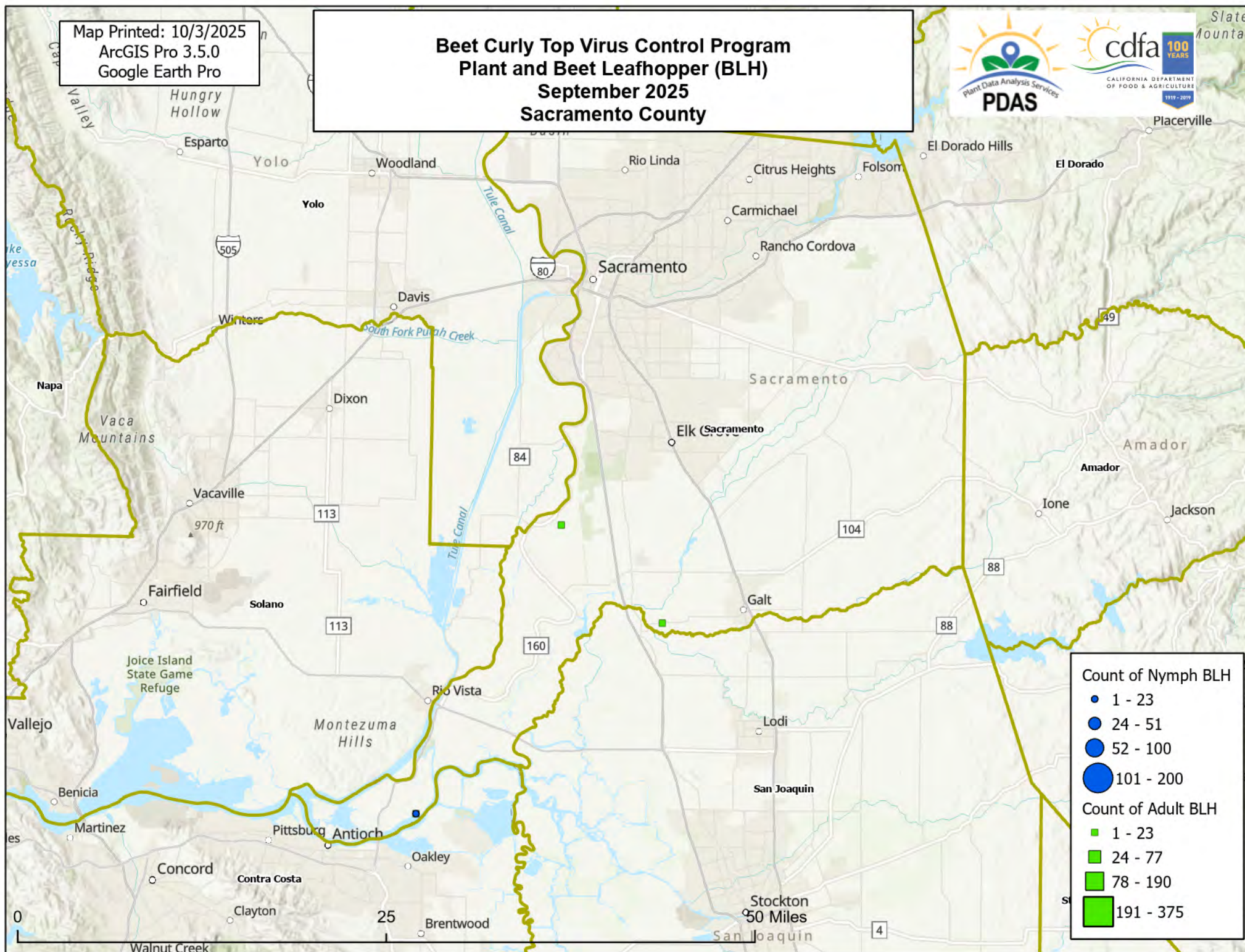
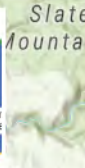
# Beet Curly Top Virus Control Program Plant and Beet Leafhopper (BLH) September 2025 Glenn County





Map Printed: 10/3/2025  
ArcGIS Pro 3.5.0  
Google Earth Pro

# Beet Curly Top Virus Control Program Plant and Beet Leafhopper (BLH) September 2025 Sacramento County





Map Printed: 10/3/2025  
ArcGIS Pro 3.5.0  
Google Earth Pro

# Beet Curly Top Virus Control Program Plant and Beet Leafhopper (BLH) September 2025 Solano County

