

Beet Curly Top Virus Control Program

Monthly Report

California Department of Food and Agriculture
Plant Health and Pest Prevention Services
Integrated Pest Control Branch
2895 N. Larkin Ave, Suite A
Fresno, CA 93727
Phone: (559) 294-2031
Fax: (559) 294-2037



November 2025

Program Update

- In November, Beet Curly Top Virus Control Program (BCTVCP) personnel conducted beetle leafhopper (BLH) and vegetation surveys in the foothills on the westside of the San Joaquin and Sacramento Valleys in Butte, Colusa, Fresno, Glenn, Kern, Kings, Madera, Merced, Solano, Stanislaus Sutter, and Yolo counties.
- BLH counts remained low in all survey areas statewide (0-1 BLH per sweep set).
- Commonly observed host vegetation is Russian Thistle, Mallow, Filaree, Mustards, Bassia.
- Program staff in the Northern and Southern counties have switched to Spring survey methods. Program staff the San Joaquin Valley continue working in 3-5 mile buffer zone from the hillsides surveying roadsides due to emerging vegetation.
- On November 19, the Beet Curly Top Virus Control Board (BCTVCB) held an annual Fall Meeting to review the Program budget, provide updates on current operations, and to review objectives for the 2026 growing season.
- The Program would like to remind growers and PCA's that any fallow fields or weedy areas adjacent to susceptible crops should be inspected for BLH prior to disking or mowing. The Program can be available for BLH surveys and, if needed, control of fallow fields and/or roadsides where BLH counts reach the threshold triggers for control.
- Please visit the Program's webpage to view Program reports and alerts.
https://www.cdafa.ca.gov/plant/ipc/curlytopvirus/ctv_hp.htm
- The BCTVCP has deployed a Beet Leafhopper Sighting Report that industry can use to report BLH or CTV incidence in the field. This report is available using the following web browser link: <https://arcg.is/O9LyK> or by downloading the ArcGIS Survey123 app from the Google Play Store or Apple App Store and using the QR code below. A user guide for the BLH Sighting Report is available on the BCTVCP webpage.



- For program inquiries or questions regarding this report, please contact Kendra Tapia at kendra.tapia@cdfa.ca.gov or (916) 823-1169.

2025 Beet Curly Top Virus 3-Year Average BLH Counts

November County Average BLH Counts				
<u>County</u>	<u>2022</u>	<u>2023</u>	<u>2024</u>	<u>2025</u>
Fresno	0.2	1.0	-	0.04
Kings	-	0.4	-	0.05
Kern	0.4	0.2	0.3	0.2
Madera	-	0	-	0.03
Merced	-	0.1	-	0.1
Butte	-	0	0	0
Colusa	-	0.04	0.1	0.2
Glenn	-	0.03	0.02	0.04
Sacramento	-	0.05	0.2	-
San Joaquin	-	0.08	0.3	-
Stanislaus	-	-	0.4	0.1
Sutter	-	0.1	0.2	0.05
Solano	-	0.04	0.5	0
Yolo	-	0.03	0.4	0.2
Yuba	-	-	-	-

2025 Beet Curly Top Virus Sample Results

January 2025- BCTV Sample Results by County														
	Fresno	Kings	Kern	Merced	Madera	Glenn	Yolo	Colusa	Sutter	Butte	Solano	Sacramento	Stanislaus	San Joaquin
Positive BLH	-	1	-	-	-	-	-	-	-	-	-	-	-	-
Negative BLH	2	2	-	-	-	-	-	-	-	-	-	-	-	-
Positive Host Plant	1	-	-	-	-	-	-	-	-	-	-	-	-	-
Negative Host Plant	5	4	-	-	-	3	7	3	4	4	3	2	-	7

February 2025- BCTV Sample Results by County														
	Fresno	Kings	Kern	Merced	Madera	Glenn	Yolo	Colusa	Sutter	Butte	Solano	Sacramento	Stanislaus	San Joaquin
Positive BLH	6	3	1	-	-	-	-	-	-	-	-	-	-	-
Negative BLH	7	2	5	-	-	-	-	-	-	-	-	-	-	-
														-
Positive Host Plant	-	-	-	-	-	-	1	-	-	-	-	-	-	-
Negative Host Plant	72	21	27	12	10	10	6	4	6	2	10	2	9	7

[illegible]

April 2025- BCTV Sample Results by County														
	Fresno	Kings	Kern	Merced	Madera	Glenn	Yolo	Colusa	Sutter	Butte	Solano	Sacramento	Stanislaus	San Joaquin
Positive BLH	7	8	8	-	-	-	-	-	-	-	-	-	-	-
Negative BLH	2	1	-	-	-	-	-	-	-	-	-	-	1	-
Positive Host Plant	3	3	16	-	-	-	-	-	-	-	-	-	-	-
Negative Host Plant	27	14	81	2	-	7	6	6	6	5	6	4	7	8
Positive Tomato Plants	-	-	-	-	-	-	-	-	-	-	-	-	-	-
Negative Tomato Plants	-	-	-	-	-	-	2	3	5	-	2	-	-	-

May 2025- BCTV Sample Results by County																	
	Fresno	Kings	Kern	Merced	Madera	Glenn	Yolo	Colusa	Sutter	Butte	Solano	Sacramento	Stanislaus	San Joaquin	Imperial	Monterey	Riverside
Positive BLH	9	-	6	1	-	-	-	-	-	-	-	-	-	-	1	1	-
Negative BLH	-	-	-	-	-	-	-	-	-	-	-	-	1	-	-	-	2
Positive Host Plant	5	-	7	-	-	-	-	-	-	-	-	-	-	-	-	-	-
Negative Host Plant	9	-	24	1	1	2	3	2	5	2	4	-	3	6	5	2	4
Positive Tomato Plants	-	-	34	-	-	-	2	-	-	-	-	-	-	1	-	-	-
Negative Tomato Plants	14	3	23	-	-	3	14	7	14	-	6	-	8	2	1	-	-

June 2025- BCTV Sample Results by County															
	Fresno	Kings	Kern	Merced	Madera	Glenn	Yolo	Colusa	Sutter	Butte	Solano	Sacramento	Stanislaus	San Joaquin	Tulare
Positive BLH	-	-	5	-	1	-	-	-	-	-	-	-	1	-	-
Negative BLH	-	-	-	-	-	-	-	-	-	-	-	-	-	-	-
Positive Host Plant	4	-	11	-	1	-	-	-	-	-	-	-	1	-	-
Negative Host Plant	5	-	29	1	1	3	3	3	2	-	3	-	1	1	-
Positive Tomato Plants	40	13	38	15	1	-	-	1	-	-	-	-	10	9	-
Negative Tomato Plants	22	9	19	11	3		29	12	9	-	17	-	5	4	1

July 2025- BCTV Sample Results by County															
	Fresno	Kings	Kern	Merced	Madera	Glenn	Yolo	Colusa	Sutter	Butte	Solano	Sacramento	Stanislaus	San Joaquin	Tehama
Positive BLH	4	-	3	-	5	-	-	-	-	-	-	-	-	-	-
Negative BLH	2	-	-	-	-	-	-	-	-	-	-	-	-	-	-
Positive Host Plant	17	1	25	-	5	-	-	1	-	1	-	-	1	-	-
Negative Host Plant	13	6	23	6	9	1	5	-	2	2	-	-	2	1	2
Positive Tomato Plants	13	6	5	14	-	-	1	4	-	-	1	1	3	1	-
Negative Tomato Plants	3	1	3	5	-	2	16	12	3	-	4	1	-	9	3

August 2025- BCTV Sample Results by County															
	Fresno	Kings	Kern	Merced	Madera	Glenn	Yolo	Colusa	Sutter	Butte	Solano	Sacramento	Stanislaus	San Joaquin	Tehama
Positive BLH	-	-	-	1	2	-	-	-	-	-	-	-	1	-	-
Negative BLH	-	-	1	-	-	-	-	-	-	-	-	-	-	-	-
Positive Host Plant	3	-	19	2	1	-	-	-	-	-	-	-	8	-	-
Negative Host Plant	6	2	32	4	2	8	1	7	5	3	-	-	3	1	-
Positive Tomato Plants	2	-	-	-	-	-	-	-	1	-	-	-	-	4	-
Negative Tomato Plants	-	4	-	-	-	-	5	5	8	-	-	-	-	12	-

September 2025- BCTV Sample Results by County															
	Fresno	Kings	Kern	Merced	Madera	Glenn	Yolo	Colusa	Sutter	Butte	Solano	Sacramento	Stanislaus	San Joaquin	Tehama
Positive BLH	-	-	1	3	5	-	-	-	-	-	-	-	3	-	-
Negative BLH	-	-	-	1	-	-	-	-	-	-	-	-	-	-	-
Positive Host Plant	-	-	20	1	5	-	-	-	-	-	-	-	8	-	-
Negative Host Plant	5	-	39	1	1	1	6	15	8	-	11	4	4	6	-
Positive Tomato Plants	-	-	-	-	-	-	-	-	-	-	-	-	-	-	-
Negative Tomato Plants	1	-	-	-	-	-	3	-	2	-	-	1	-	4	-

October 2025- BCTV Sample Results by County

[illegible]

November 2025- BCTV Sample Results by County

[illegible]

County Reports

Fresno County

- BLH population surveys were conducted in the overwintering foothills as well as in fallow fields and roadsides within five miles of the foothills.
- Overall counts remained low throughout survey areas, averaging 0-1 BLH per sweep set.
- Host plant vegetation surveyed included Russian Thistle, Mallow, Filaree, and Bassia.
- A map identifying the location of the BLH counts is provided at the end of the report.

Fresno County BLH Survey		
<u>Location</u>	<u>Date</u>	<u>Average # of BLH per sweep set</u>
Fresno Zone 02	11/1-11/30	0
Fresno Zone 04	11/1-11/30	0.04
Fresno Zone 05	11/1-11/30	0
Fresno Zone 09	11/1-11/30	0.08

Kern County

- BLH population surveys were conducted in the overwintering foothills as well as in fallow fields and roadsides within five miles of the foothills.
- Overall counts remained low throughout survey areas, averaging 0-1 BLH per sweep set.
- Host plant vegetation surveyed included Russian Thistle, Bassia, and Mallow.
- A map identifying the location of the BLH counts is provided at the end of the report.

Kern County BLH Survey		
<u>Location</u>	<u>Date</u>	<u>Average # of BLH per sweep set</u>
Kern Zone 07	11/1-11/30	0
Kern Zone 08	11/1-11/30	0.1
Kern Zone 09	11/1-11/30	0.05
Kern Zone 10	11/1-11/30	0.3
Kern Zone 11	11/1-11/30	0.1
Kern Zone 12	11/1-11/30	0

Kings County

- BLH population surveys were conducted in the overwintering foothills as well as in fallow fields and roadsides within five miles of the foothills.
- Overall counts remained low throughout survey areas, averaging 0-1 BLH per sweep set.
- Host plant vegetation surveyed included Russian Thistle, Mallow, and Bassia.
- A map identifying the location of the BLH counts is provided at the end of the report.

Kings County BLH Survey		
<u>Location</u>	<u>Date</u>	<u>Average # of BLH per sweep set</u>
Kings Zone 01	11/1-11/30	0.03
Kings Zone 02	11/1-11/30	0.2
Kings Zone 03	11/1-11/30	0.06
Kings Zone 04	11/1-11/30	0.04

Madera County

- BLH population surveys were conducted in fallow fields and roadsides within five miles of the foothills.
- Overall counts remained low throughout the survey areas, averaging 0-1 BLH per sweep set.
- Host vegetation surveyed included Pig Weed, Bassia, and Russian Thistle.
- A map identifying BLH counts is provided at the end of the report.

Madera County BLH Survey		
<u>Location</u>	<u>Date</u>	<u>Average # of BLH per sweep set</u>
Madera Zone 01	11/1-11/30	0.03

Merced County

- BLH population surveys were conducted in fallow fields and roadsides within five miles of the foothills.
- Overall counts remained low throughout the survey areas, averaging 0-1 BLH per sweep set.
- Host vegetation surveyed included Bassia, Filaree, Mallow, and Russian Thistle.
- A map identifying BLH counts is provided at the end of the report.

Merced County BLH Survey		
<u>Location</u>	<u>Date</u>	<u>Average # of BLH per sweep set</u>
Merced Zone 01	11/1-11/30	0.1

Colusa County

- BLH population surveys were conducted in fallow fields and roadsides within five miles of the foothills.
- Overall counts remained low throughout the survey areas, averaging 0-1 BLH per sweep set.
- Host vegetation surveyed included Mallow, Mustards, Filaree, and Russian Thistle.
- A map identifying BLH counts is provided at the end of the report.

Colusa County BLH Survey		
<u>Location</u>	<u>Date</u>	<u>Average # of BLH per sweep set</u>
Colusa Zone 01	11/1-11/30	0.2

Yolo County

- BLH population surveys were conducted in fallow fields and roadsides within five miles of the foothills.
- Overall counts remained very low throughout the survey areas, averaging 0-1 BLH per sweep set.
- Host vegetation surveyed included Mallow, Mustards, Filaree, and Russian Thistle.
- A map identifying BLH counts is provided at the end of the report.

Yolo County BLH Survey		
<u>Location</u>	<u>Date</u>	<u>Average # of BLH per sweep set</u>
Yolo Zone 01	11/1-11/30	0.2

Sutter County

- BLH population surveys were conducted in fallow fields and roadsides within five miles of the foothills.
- Overall counts remained very low throughout the survey areas, averaging 0-1 BLH per sweep set.

- Host vegetation surveyed included Mallow, Mustards and Filaree.
- A map identifying BLH counts is provided at the end of the report.

Sutter County BLH Survey		
<u>Location</u>	<u>Date</u>	<u>Average # of BLH per sweep set</u>
Sutter Zone 01	11/1-11/30	0.05

Stanislaus County

- BLH population surveys were conducted in fallow fields and roadsides within five miles of the foothills.
- Overall counts remained very low throughout the survey areas, averaging 0-1 BLH per sweep set.
- Host vegetation surveyed included Mallow and Russian Thistle.
- A map identifying BLH counts is provided at the end of the report.

Stanislaus County BLH Survey		
<u>Location</u>	<u>Date</u>	<u>Average # of BLH per sweep set</u>
Stanislaus Zone 01	11/1-11/30	0.1

Glenn County

- BLH population surveys were conducted in fallow fields and roadsides within five miles of the foothills.
- Overall counts remained very low throughout the survey areas, averaging 0-1 BLH per sweep set.
- Host vegetation surveyed included Russian Thistle, Filaree, and Mallow.
- A map identifying BLH counts is provided at the end of the report.

Glenn County BLH Survey		
<u>Location</u>	<u>Date</u>	<u>Average # of BLH per sweep set</u>
Glenn Zone 01	11/1-11/30	0.04

Butte County

- BLH population surveys were conducted in fallow fields and roadsides within five miles of the foothills.
- No BLH were observed during survey in Butte County.
- Host vegetation surveyed included Filaree, Mustards, and Mallow.

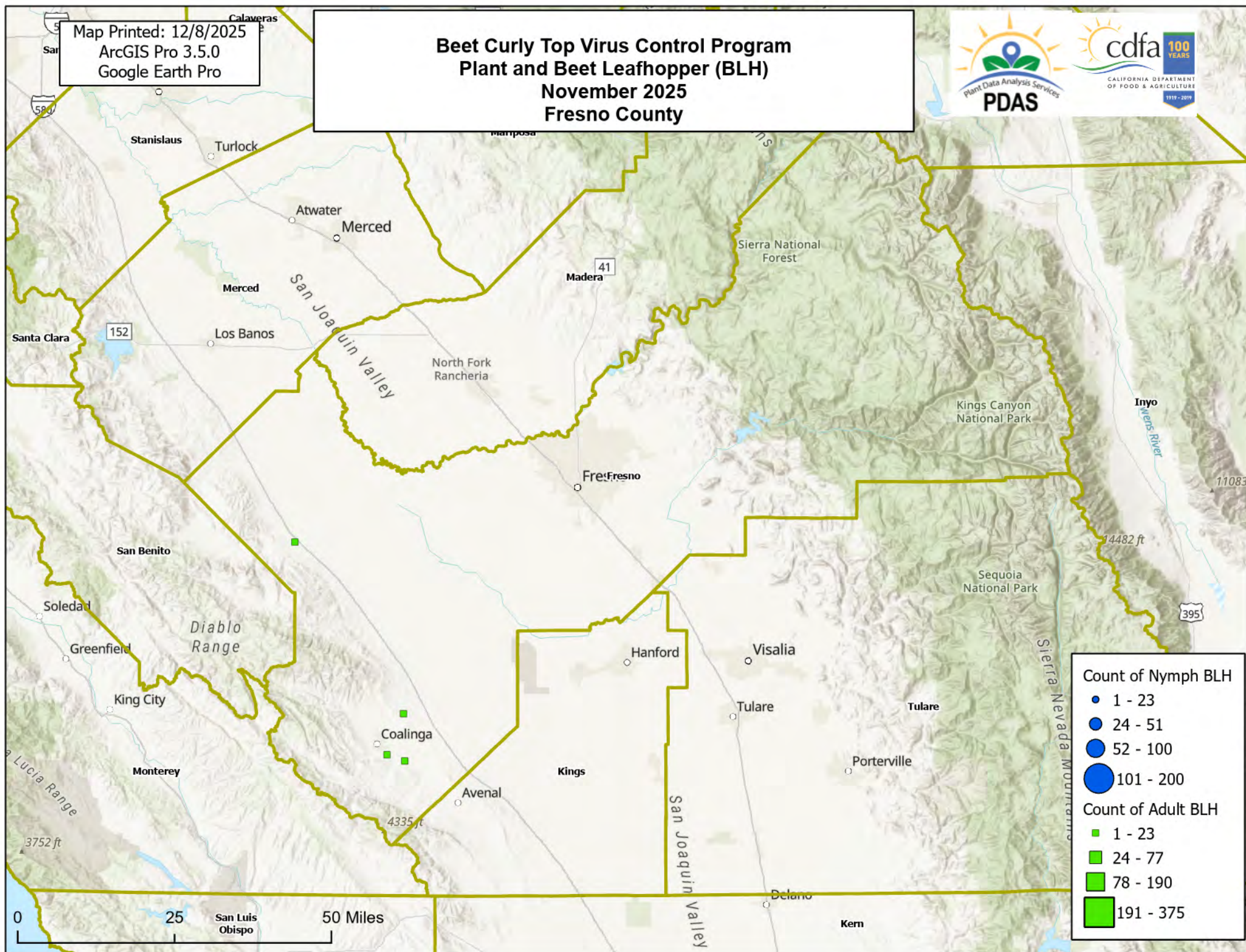
Solano County

- BLH population surveys were conducted in fallow fields and roadsides within five miles of the foothills.
- No BLH were observed during survey in Solano County.
- Host vegetation surveyed included Mallow and Mustards.

To subscribe to the BCTV monthly report, updates, and alerts, please use the link below:
www.cdfa.ca.gov/subscriptions/

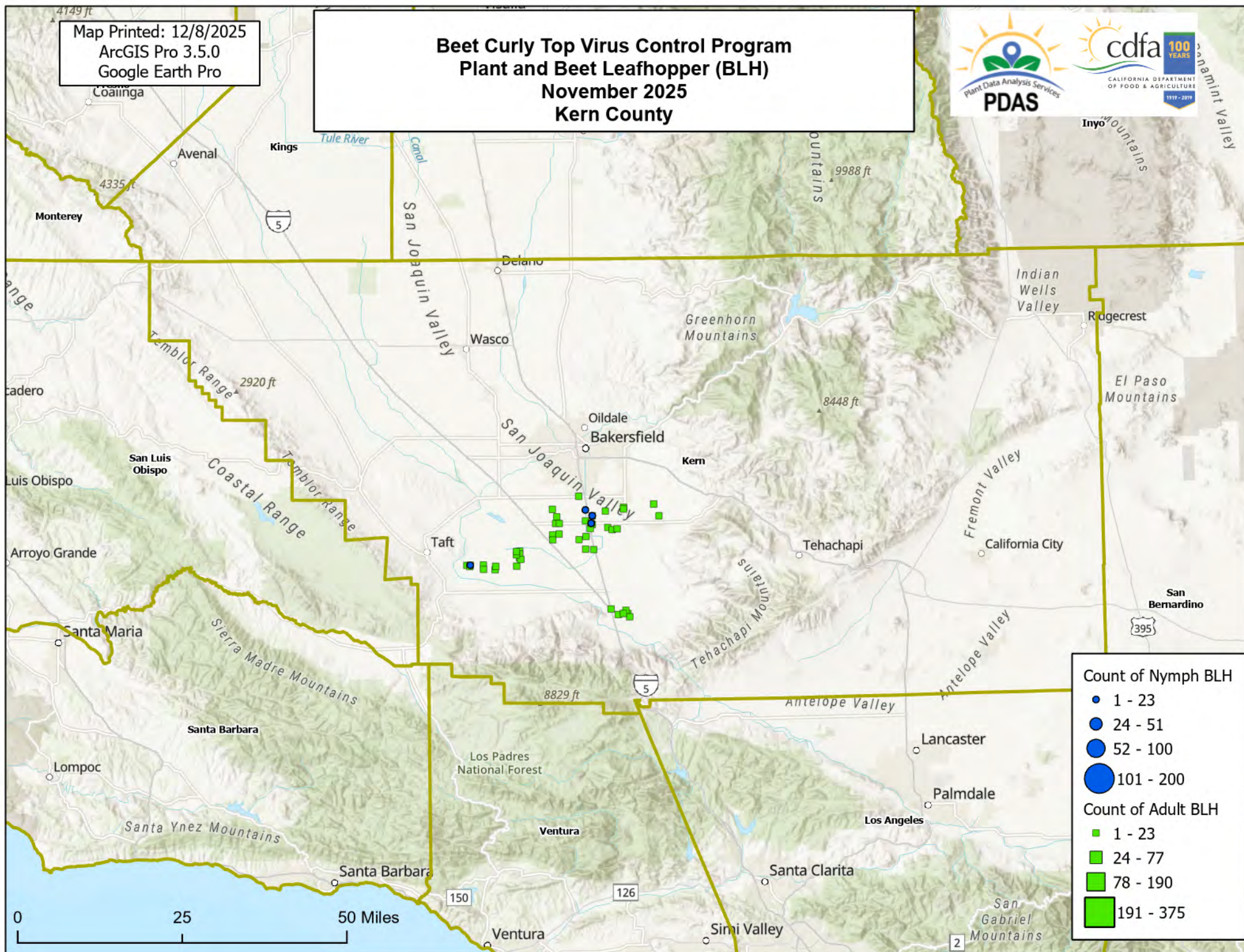
Map Printed: 12/8/2025
ArcGIS Pro 3.5.0
Google Earth Pro

Beet Curly Top Virus Control Program Plant and Beet Leafhopper (BLH) November 2025 Fresno County



Map Printed: 12/8/2025
ArcGIS Pro 3.5.0
Google Earth Pro

Beet Curly Top Virus Control Program Plant and Beet Leafhopper (BLH) November 2025 Kern County



Count of Nymph BLH

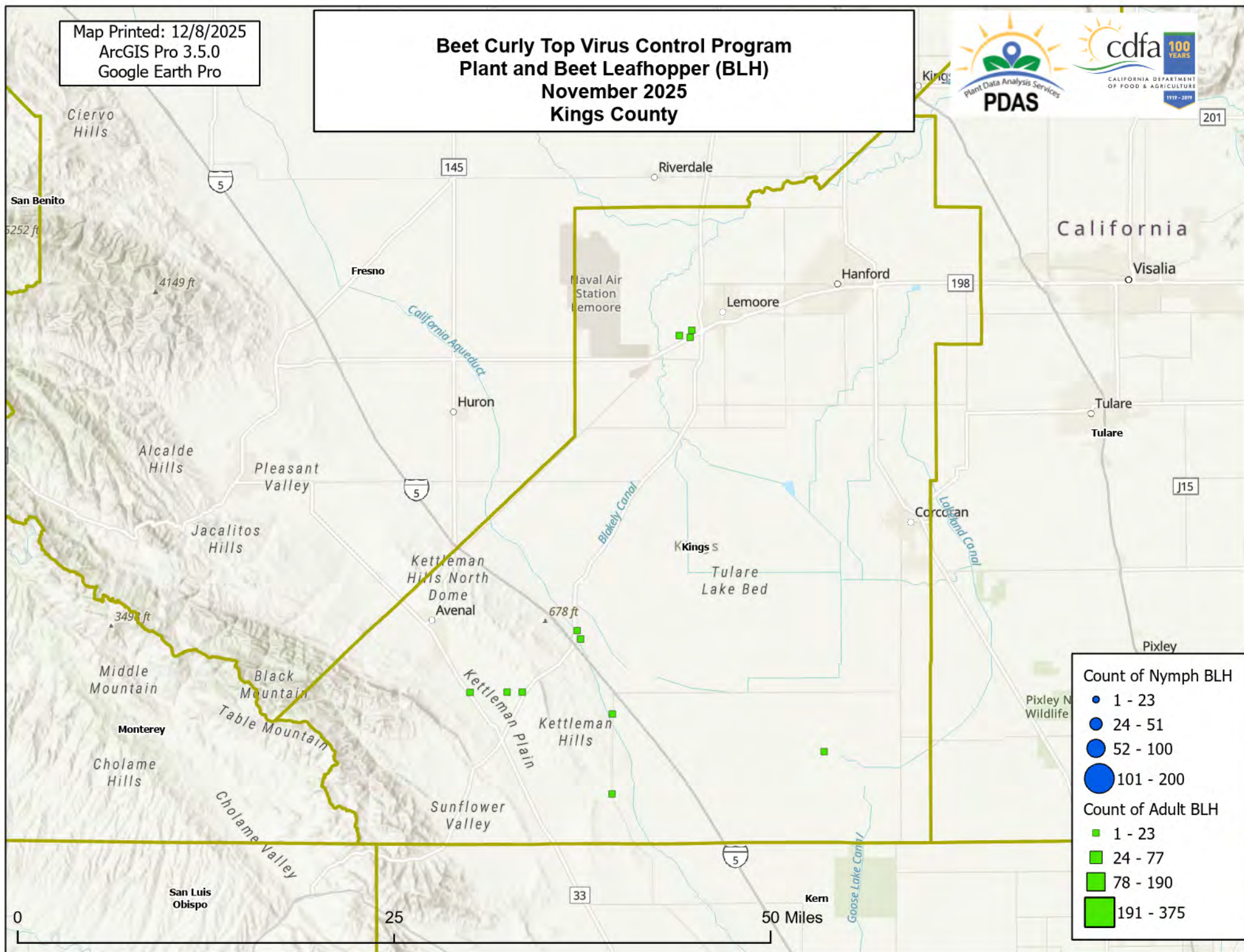
- 1 - 23
- 24 - 51
- 52 - 100
- 101 - 200

Count of Adult BLH

- 1 - 23
- 24 - 77
- 78 - 190
- 191 - 375

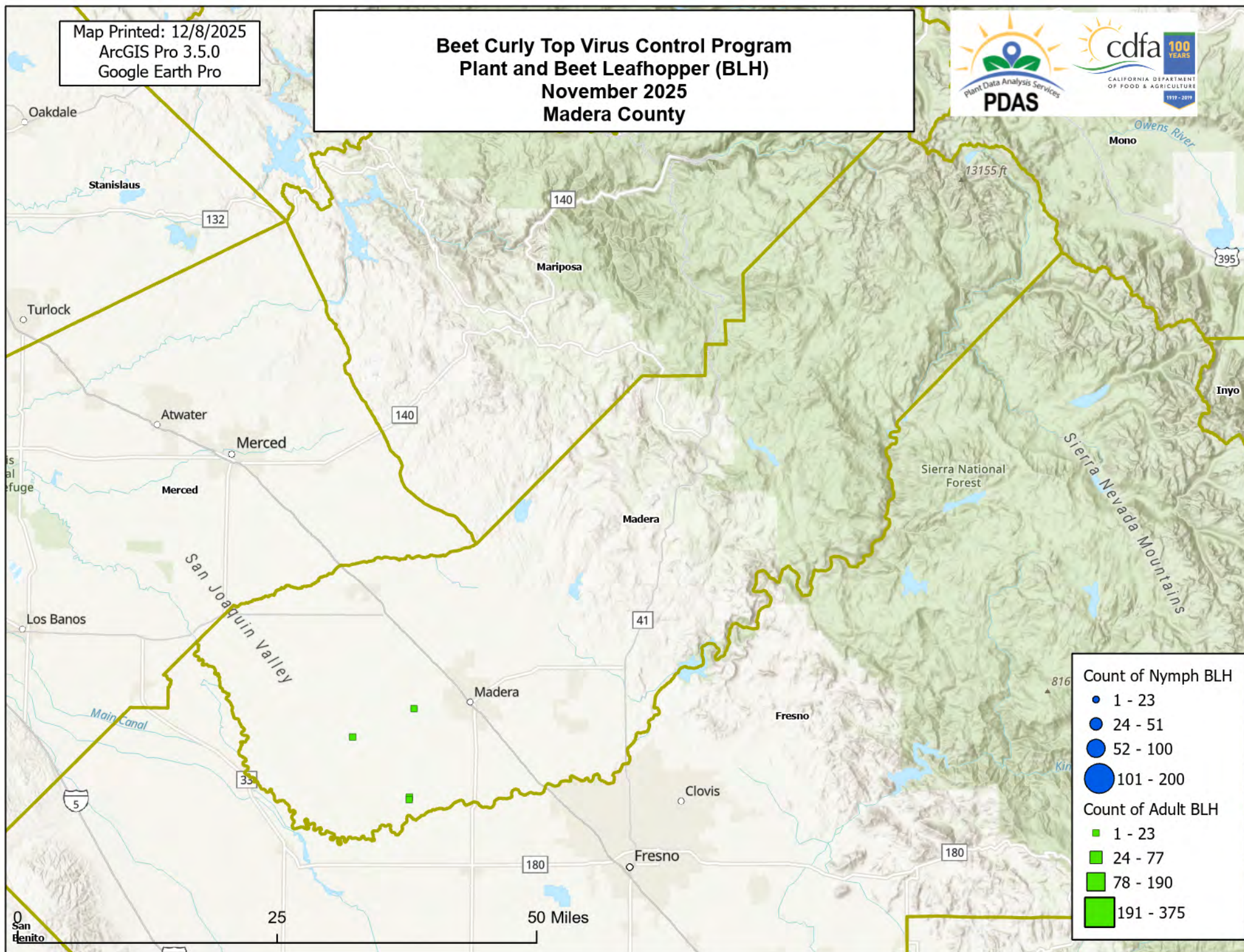
Map Printed: 12/8/2025
ArcGIS Pro 3.5.0
Google Earth Pro

Beet Curly Top Virus Control Program Plant and Beet Leafhopper (BLH) November 2025 Kings County



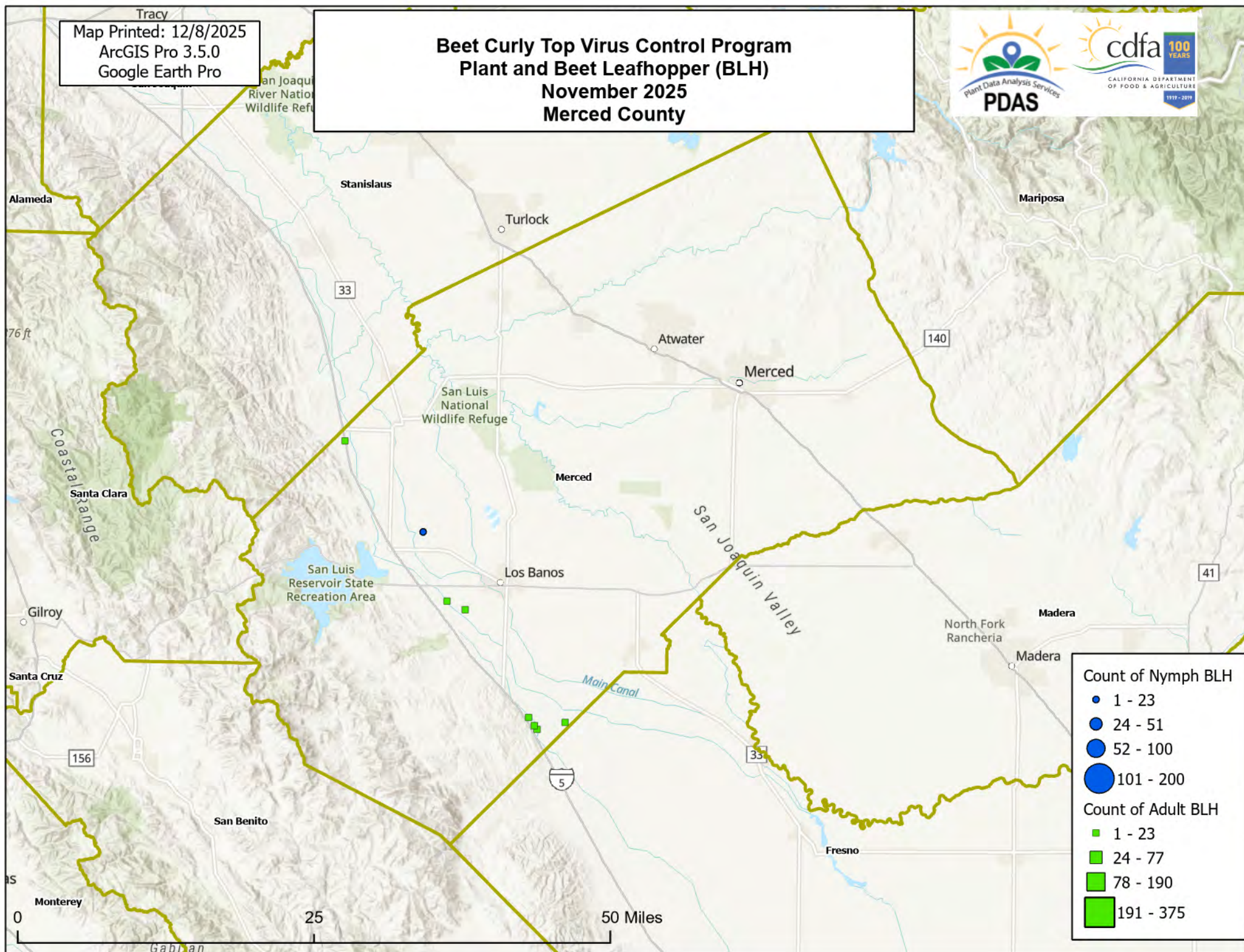
Map Printed: 12/8/2025
ArcGIS Pro 3.5.0
Google Earth Pro

Beet Curly Top Virus Control Program Plant and Beet Leafhopper (BLH) November 2025 Madera County



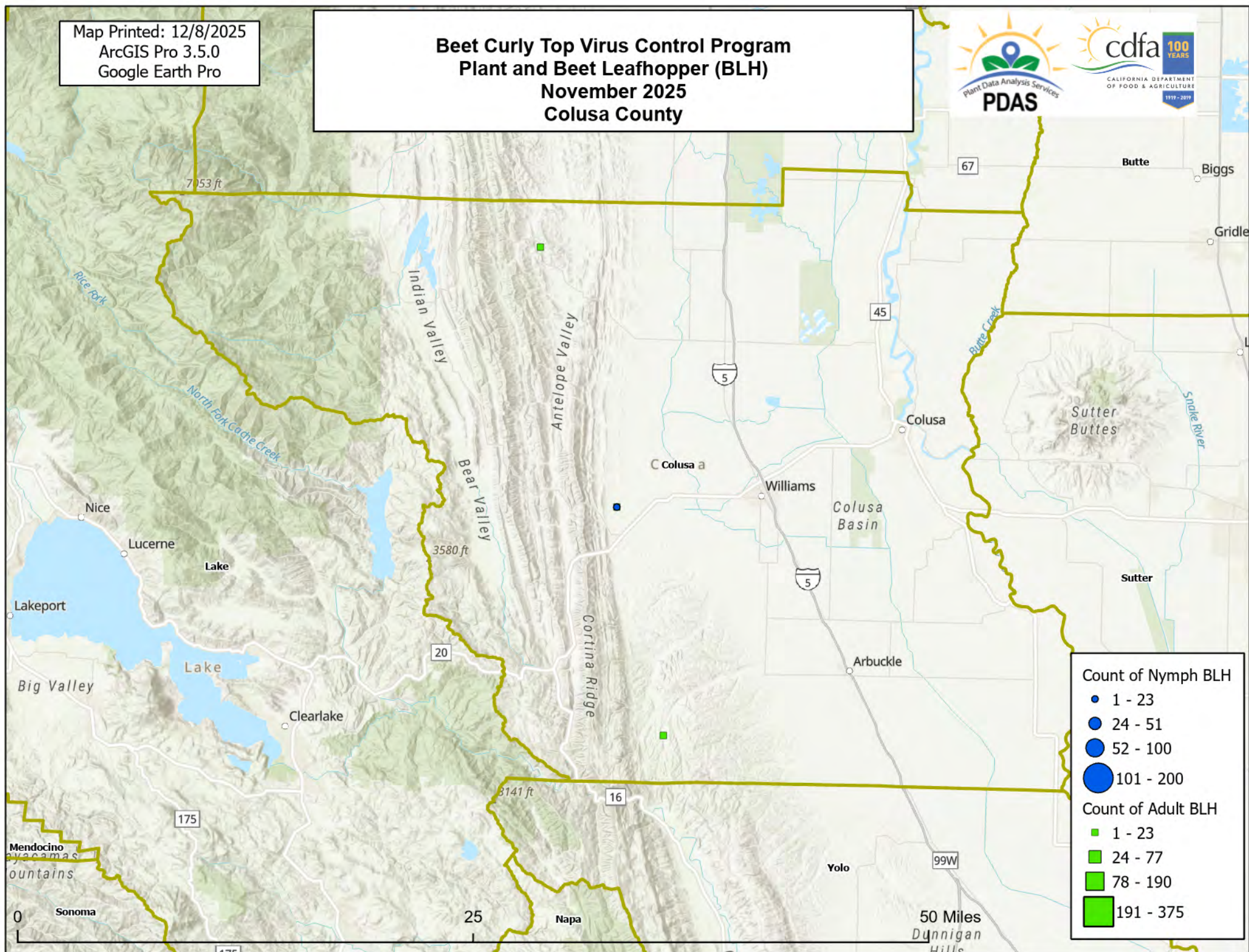
Map Printed: 12/8/2025
ArcGIS Pro 3.5.0
Google Earth Pro

Beet Curly Top Virus Control Program Plant and Beet Leafhopper (BLH) November 2025 Merced County



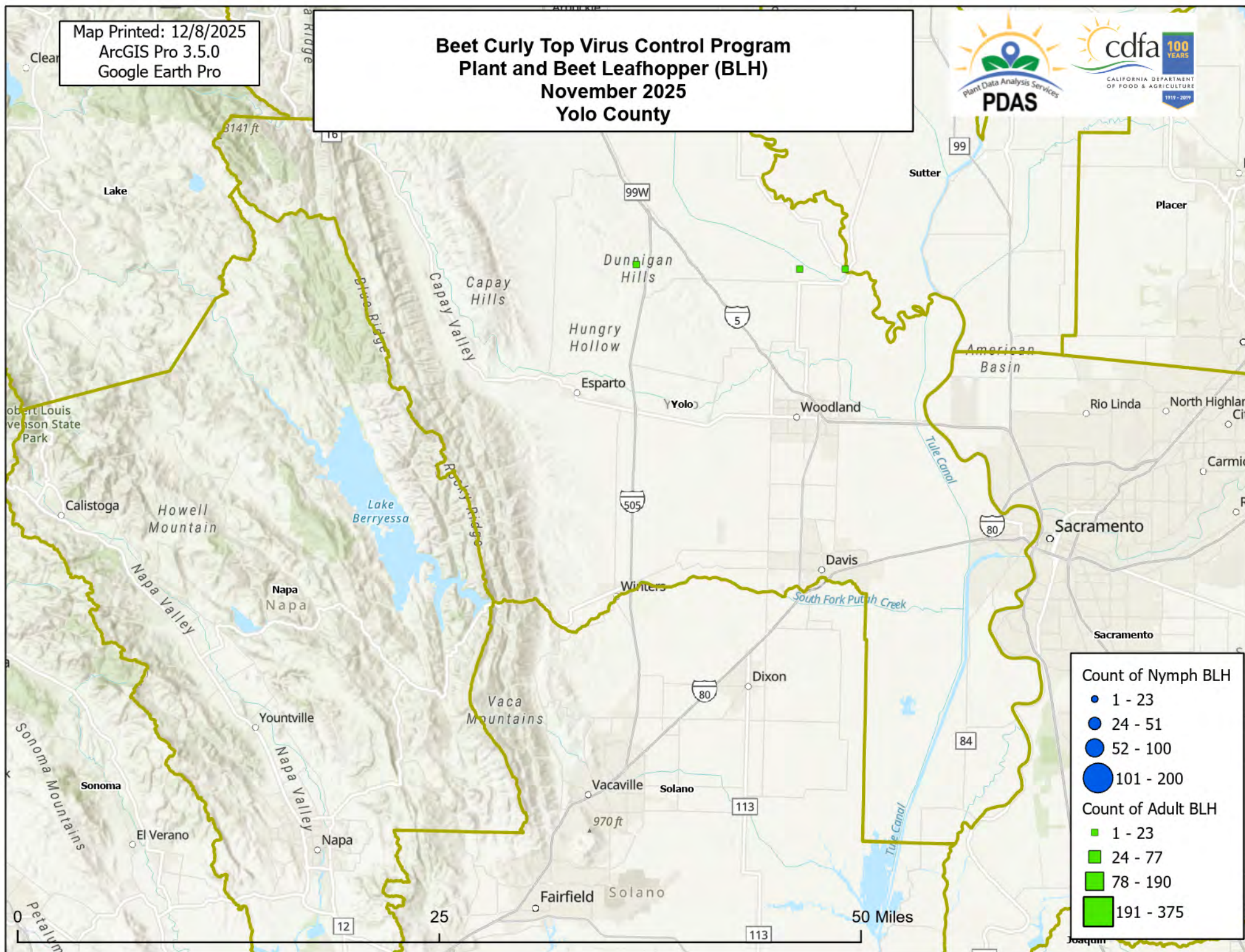
Map Printed: 12/8/2025
ArcGIS Pro 3.5.0
Google Earth Pro

Beet Curly Top Virus Control Program Plant and Beet Leafhopper (BLH) November 2025 Colusa County



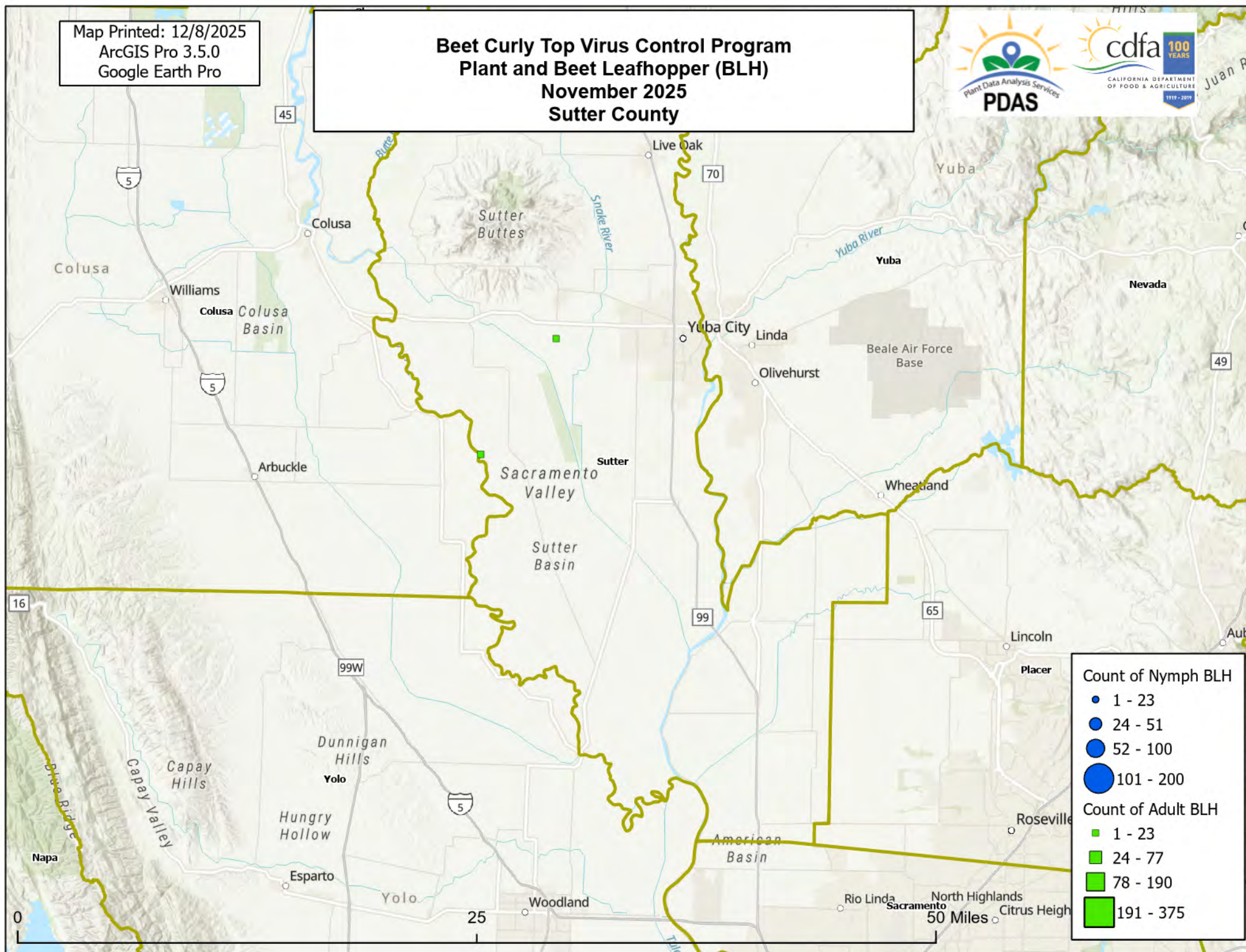
Map Printed: 12/8/2025
ArcGIS Pro 3.5.0
Google Earth Pro

Beet Curly Top Virus Control Program Plant and Beet Leafhopper (BLH) November 2025 Yolo County



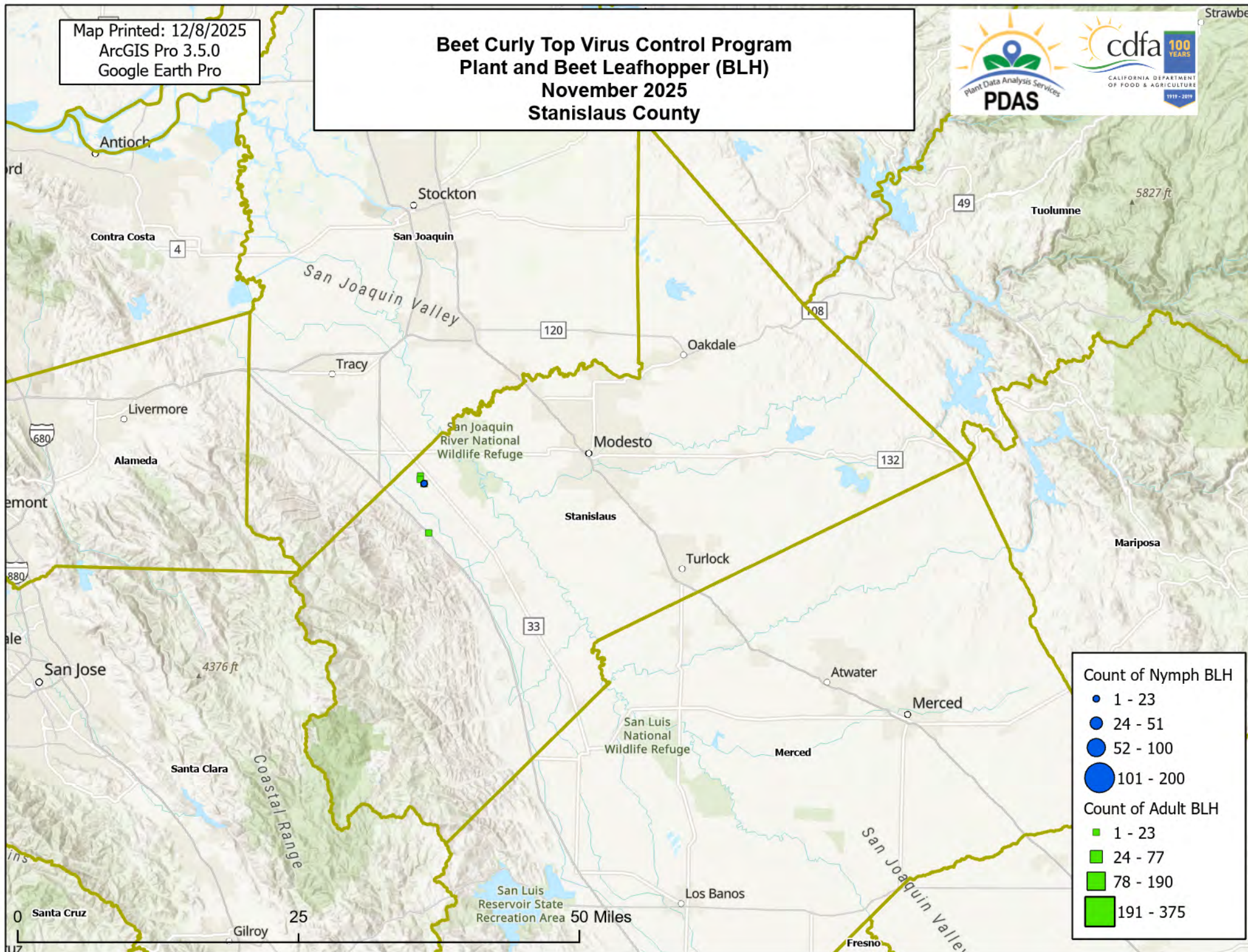
Map Printed: 12/8/2025
ArcGIS Pro 3.5.0
Google Earth Pro

Beet Curly Top Virus Control Program Plant and Beet Leafhopper (BLH) November 2025 Sutter County



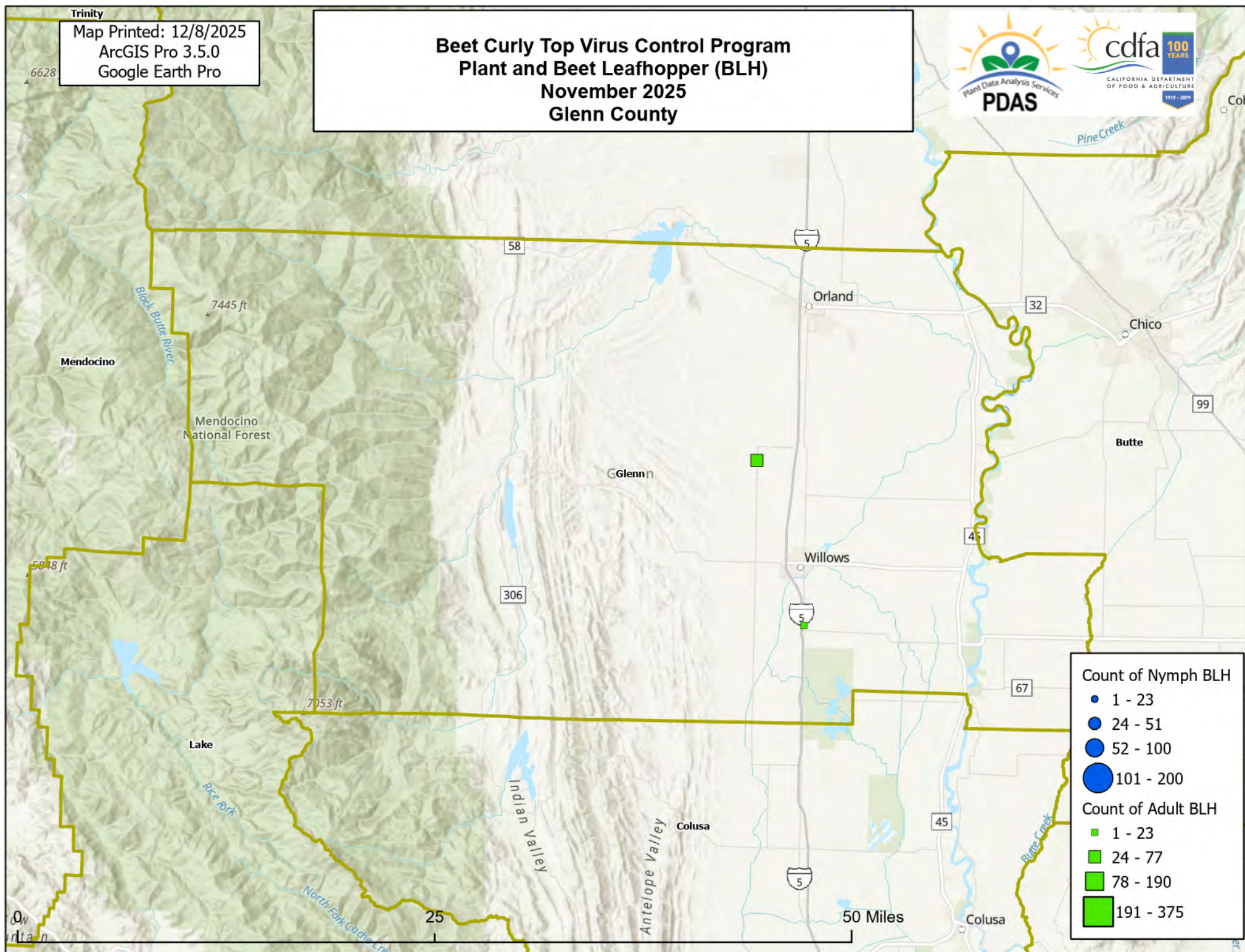
Map Printed: 12/8/2025
ArcGIS Pro 3.5.0
Google Earth Pro

Beet Curly Top Virus Control Program Plant and Beet Leafhopper (BLH) November 2025 Stanislaus County

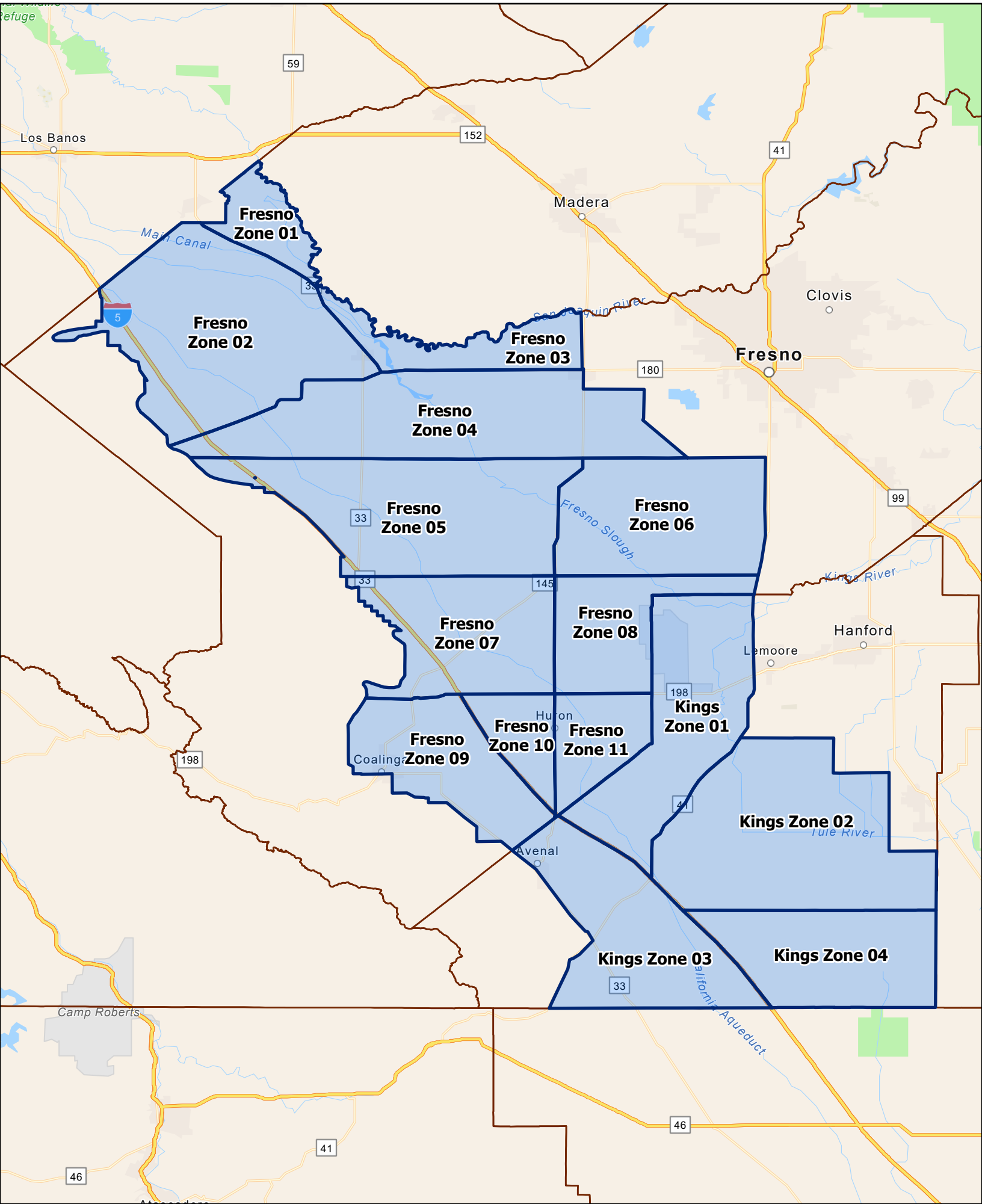


Map Printed: 12/8/2025
ArcGIS Pro 3.5.0
Google Earth Pro

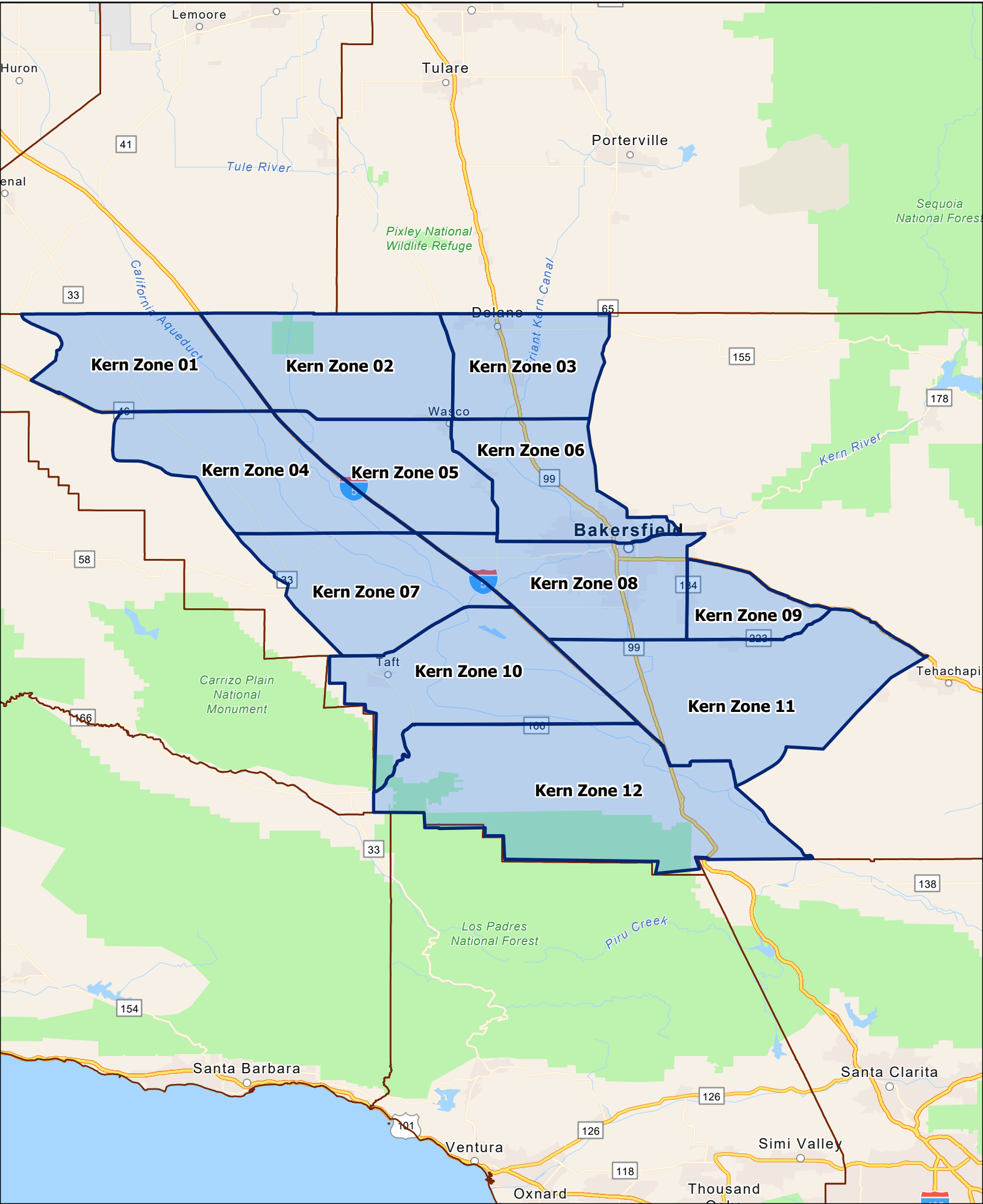
Beet Curly Top Virus Control Program Plant and Beet Leafhopper (BLH) November 2025 Glenn County



CTV Control Program Survey Zones Fresno & Kings Counties



CTV Control Program Survey Zones Kern County



CTV Control Program Survey Zones
Madera, Merced, Stanislaus & San Joaquin Counties

