

# Beet Curly Top Virus Control Program

## Monthly Report

California Department of Food and Agriculture  
Plant Health and Pest Prevention Services  
Integrated Pest Control Branch  
2895 N. Larkin Ave, Suite A  
Fresno, CA 93727  
Phone: (559) 294-2031  
Fax: (559) 294-2037



---

---

June 2025

### Program Update

- In June, Beet Curly Top Virus Control Program (BCTVCP) personnel conducted beet leafhopper (BLH) and vegetation surveys in the foothills on the westside of the San Joaquin and Sacramento Valleys in Fresno, Kern, Kings, Yolo, Sutter, Glenn, Merced, Stanislaus, Butte, Sacramento, San Joaquin, Madera, Tulare and Colusa counties.
- BLH counts remained low in all survey areas statewide (0-1 BLH per sweep set).
- Host vegetation is observed on private properties, highways, and orchards/vineyards. Commonly observed host vegetation is Bassia, Russian Thistle, and Goosefoot that will be continuously monitored for BLH populations.
- Commodity Surveys statewide have seen low damage and are under 0-2% average. The second round of commodity surveys are being conducted by BCTV staff.
- On June 11, The Program was invited to speak at the Visalia PAPA Seminar hosted by in Tulare County.
- On June 18, the Beet Curly Top Virus Control Board (BCTVCB) held a Diagnostic Subcommittee meeting to evaluate current and new research proposals, as well as to discuss updates on existing projects.
- On June 24, The Program was invited to speak at WERA 1007 Curly Top Multistate Project conference hosted by USDA Temperate Tree Fruit and Vegetable Research (TTFVRU) Center in Wapato, WA.
- The Program would like to remind growers and PCA's that any fallow fields or weedy areas adjacent to susceptible crops should be inspected for BLH prior to disking or mowing. The Program can be available for BLH surveys and, if needed, control of fallow fields and/or roadsides where BLH counts reach the control thresholds.
- Please visit the Program's webpage to view Program reports and alerts.  
[https://www.cdfa.ca.gov/plant/ipc/curlytopvirus/ctv\\_hp.htm](https://www.cdfa.ca.gov/plant/ipc/curlytopvirus/ctv_hp.htm)
- The BCTVCP has deployed a Beet Leafhopper Sighting Report that industry can use to report BLH or CTV incidence in the field. This report is available using the following

web browser link: <https://arcg.is/O9LyK> or by downloading the ArcGIS Survey123 app from the Google Play Store or Apple App Store and using the QR code below. A user guide for the BLH Sighting Report is available on the BCTVCP webpage.



- For program inquiries or questions regarding this report, please contact Kendra Tapia at [kendra.tapia@cdfa.ca.gov](mailto:kendra.tapia@cdfa.ca.gov) or (916) 823-1169.

### 2025 Beet Curly Top Virus 3-Year Average BLH Counts

June County Average BLH Counts				
<u>County</u>	<u>2022</u>	<u>2023</u>	<u>2024</u>	<u>2025</u>
Fresno	14.0	0.6	0.4	0.04
Kings	-	1.0	-	0.6
Kern	2.6	0.4	0.2	0.2
Madera	-	0.1	0.02	1.1
Merced	-	0.05	0	0.03
Butte	-	2.1	-	-
Colusa	-	1.7	-	0.7
Glenn	-	2.9	-	0.3
Sacramento	-	0.09	0.1	0
San Joaquin	-	0.02	0.05	0.08
Stanislaus	-	0.07	0.03	0.1
Sutter	-	2.0	-	0.2
Solano	-	0.2	0	0.3
Yolo	-	1.1	0	0.1
Tulare	-	-	-	-
Monterey	-	0.01	-	-
Tehama	-	-	0.2	-

## 2025 Beet Curly Top Virus Sample Results

January 2025- BCTV Sample Results by County														
	Fresno	Kings	Kern	Merced	Madera	Glenn	Yolo	Colusa	Sutter	Butte	Solano	Sacramento	Stanislaus	San Joaquin
Positive BLH	-	1	-	-	-	-	-	-	-	-	-	-	-	-
Negative BLH	2	2	-	-	-	-	-	-	-	-	-	-	-	-
Positive Host Plant	1	-	-	-	-	-	-	-	-	-	-	-	-	-
Negative Host Plant	5	4	-	-	-	3	7	3	4	4	3	2	-	7

February 2025- BCTV Sample Results by County														
	Fresno	Kings	Kern	Merced	Madera	Glenn	Yolo	Colusa	Sutter	Butte	Solano	Sacramento	Stanislaus	San Joaquin
Positive BLH	6	3	1	-	-	-	-	-	-	-	-	-	-	-
Negative BLH	7	2	5	-	-	-	-	-	-	-	-	-	-	-
														-
Positive Host Plant	-	-	-	-	-	-	1	-	-	-	-	-	-	-
Negative Host Plant	72	21	27	12	10	10	6	4	6	2	10	2	9	7

[illegible]

April 2025- BCTV Sample Results by County														
	Fresno	Kings	Kern	Merced	Madera	Glenn	Yolo	Colusa	Sutter	Butte	Solano	Sacramento	Stanislaus	San Joaquin
Positive BLH	7	8	8	-	-	-	-	-	-	-	-	-	-	-
Negative BLH	2	1	-	-	-	-	-	-	-	-	-	-	1	-
Positive Host Plant	3	3	16	-	-	-	-	-	-	-	-	-	-	-
Negative Host Plant	27	14	81	2	-	7	6	6	6	5	6	4	7	8
Positive Tomato Plants	-	-	-	-	-	-	-	-	-	-	-	-	-	-
Negative Tomato Plants	-	-	-	-	-	-	2	3	5	-	2	-	-	-

May 2025- BCTV Sample Results by County																	
	Fresno	Kings	Kern	Merced	Madera	Glenn	Yolo	Colusa	Sutter	Butte	Solano	Sacramento	Stanislaus	San Joaquin	Imperial	Monterey	Riverside
Positive BLH	9	-	6	1	-	-	-	-	-	-	-	-	-	-	1	1	-
Negative BLH	-	-	-	-	-	-	-	-	-	-	-	-	1	-	-	-	2
Positive Host Plant	5	-	7	-	-	-	-	-	-	-	-	-	-	-	-	-	-
Negative Host Plant	9	-	24	1	1	2	3	2	5	2	4	-	3	6	5	2	4
Positive Tomato Plants	-	-	34	-	-	-	2	-	-	-	-	-	-	1	-	-	-
Negative Tomato Plants	14	3	23	-	-	3	14	7	14	-	6	-	8	2	1	-	-

June 2025- BCTV Sample Results by County															
	Fresno	Kings	Kern	Merced	Madera	Glenn	Yolo	Colusa	Sutter	Butte	Solano	Sacramento	Stanislaus	San Joaquin	Tulare
Positive BLH	-	-	3	-	1	-	-	-	-	-	-	-	1	-	-
Negative BLH	-	-	-	-	-	-	-	-	-	-	-	-	-	-	-
Positive Host Plant	-	-	10	-	-	-	-	-	-	-	-	-	-	-	-
Negative Host Plant	3	-	24	-	-	-	-	1	2	-	1	-	1	1	-
Positive Tomato Plants	17	4	-	-	-	-	-	1	-	-	-	-	4	5	-
Negative Tomato Plants	19	6	15	7	3	-	29	7	8	-	15	-	3	1	-

## County Reports

### Fresno County

- BLH population surveys were conducted in the overwintering foothills as well as in fallow fields and roadsides within five miles of the foothills.
- Overall counts remained low throughout survey areas, averaging 0-1 BLH per sweep set.
- Host plant vegetation surveyed included Mustards, Russian Thistle, Salt Bush, Pig Weed, and Bassia.
- A map identifying the location of the BLH counts is provided at the end of the report.

Fresno County BLH Survey		
<u>Location</u>	<u>Date</u>	<u>Average # of BLH per sweep set</u>
Firebaugh	6/5/2025	0.1
Firebaugh	6/12/2025	0.2
Mendota	6/12/2025	0.1
Three rocks	6/19/2025	0.2
Mendota	6/19/2025	0.1
Firebaugh	6/24/2025	0.02

### Kern County

- BLH population surveys were conducted in the overwintering foothills as well as in fallow fields and roadsides within five miles of the foothills.
- Overall counts remained low throughout survey areas, averaging 0-1 BLH per sweep set.
- Host plant vegetation surveyed included Russian Thistle, Bassia, Mustards, Goosefoot, and Pig Weed.
- A map identifying the location of the BLH counts is provided at the end of the report.

Kern County BLH Survey		
<u>Location</u>	<u>Date</u>	<u>Average # of BLH per sweep set</u>
Lamont	6/3/2025	0.2
Lamont	6/4/2025	0.2
San Emidio	6/5/2025	0.2
Bowerbank	6/5/2025	0.3
Buttonwillow	6/10/2025	0.1

Lost Hills	6/10/2025	0.1
Buttonwillow	6/11/2025	0.5
Wheeler Ridge	6/11/2025	0.1
Lokern	6/12/2025	0.5
Spicer City	6/12/2025	0.05
San Emidio	6/16/2025	0.2
Spicer City	6/16/2025	0.2
Buttonwillow	6/17/2025	0.1
Buttonwillow	6/18/2025	0.1
San Emidio	6/18/2025	0.02
Spicer City	6/19/2025	0.3
Buttonwillow	6/24/2025	0.1
Bakersfield	6/25/2025	0.2
Wasco	6/26/2025	0.2

### Kings County

- BLH population surveys were conducted in the overwintering foothills as well as in fallow fields and roadsides within five miles of the foothills.
- Overall counts remained low throughout survey areas, averaging 0-1 BLH per sweep set.
- Host plant vegetation surveyed included Russian Thistle.
- A map identifying the location of the BLH counts is provided at the end of the report.

Kings County BLH Survey		
<u>Location</u>	<u>Date</u>	<u>Average # of BLH per sweep set</u>
Lemoore	6/9/2025	0.6

### Madera County

- BLH population surveys were conducted in fallow fields and roadsides within five miles of the foothills.
- Overall counts remained low throughout the survey areas, averaging 0-1 BLH per sweep set.
- Host vegetation surveyed included Mallow, Mustards, Salt Bush, Pig Weed, Bassia, and Russian Thistle.
- A map identifying BLH counts is provided at the end of the report.

Madera County BLH Survey		
<u>Location</u>	<u>Date</u>	<u>Average # of BLH per sweep set</u>
Dairyland	6/2/2025	2.4
Dairyland	6/19/2025	0.1

### Merced County

- BLH population surveys were conducted in fallow fields and roadsides within five miles of the foothills.
- Overall counts remained low throughout the survey areas, averaging 0-1 BLH per sweep set.
- Host vegetation surveyed included Mallow, Mustards, and Russian Thistle.
- A map identifying BLH counts is provided at the end of the report.

Merced County BLH Survey		
<u>Location</u>	<u>Date</u>	<u>Average # of BLH per sweep set</u>
Los Banos	6/16/2025	0.1

### San Joaquin County

- BLH population surveys were conducted in fallow fields and roadsides within five miles of the foothills.
- Overall counts remained low throughout the survey areas, averaging 0-1 BLH per sweep set.
- Host vegetation surveyed included Mallow and Russian Thistle.
- A map identifying BLH counts is provided at the end of the report.

San Joaquin County BLH Survey		
<u>Location</u>	<u>Date</u>	<u>Average # of BLH per sweep set</u>
Stockton	6/16/2025	0.05
Tracy	6/17/2025	0.2
Manteca	6/18/2025	0.05

### Colusa County

- BLH population surveys were conducted in fallow fields and roadsides within five miles of the foothills.

- Overall counts remained low throughout the survey areas, averaging 0-1 BLH per sweep set.
- Host vegetation surveyed included Russian Thistle, Mallow, and Mustards.
- A map identifying BLH counts is provided at the end of the report.

Colusa County BLH Survey		
<u>Location</u>	<u>Date</u>	<u>Average # of BLH per sweep set</u>
Harrington	6/10/2025	1.2
Grimes	6/10/2025	1.1
Stegeman	6/26/2025	0.7

### Yolo County

- BLH population surveys were conducted in fallow fields and roadsides within five miles of the foothills.
- Overall counts remained very low throughout the survey areas, averaging 0-1 BLH per sweep set.
- Host vegetation surveyed included Mallow and Russian Thistle.
- A map identifying BLH counts is provided at the end of the report.

Yolo County BLH Survey		
<u>Location</u>	<u>Date</u>	<u>Average # of BLH per sweep set</u>
Zamora	6/3/2025	0.1
Davis	6/16/2025	0.2

### Sutter County

- BLH population surveys were conducted in fallow fields and roadsides within five miles of the foothills.
- Overall counts remained very low throughout the survey areas, averaging 0-1 BLH per sweep set.
- Host vegetation surveyed included Mallow.
- A map identifying BLH counts is provided at the end of the report.



Sutter County BLH Survey		
<u>Location</u>	<u>Date</u>	<u>Average # of BLH per sweep set</u>
Ensley	6/9/2025	0.6

### Stanislaus County

- BLH population surveys were conducted in fallow fields and roadsides within five miles of the foothills.
- Overall counts remained very low throughout the survey areas, averaging 0-1 BLH per sweep set.
- Host vegetation surveyed included Mustards, Purslane, Russian Thistle, Lamb's Quarter, and Mallow.
- A map identifying BLH counts is provided at the end of the report.

Stanislaus County BLH Survey		
<u>Location</u>	<u>Date</u>	<u>Average # of BLH per sweep set</u>
Timba	6/9/2025	0.4
Jet	6/11/2025	0.1
Turlock	6/11/2025	0.03

### Glenn County

- BLH population surveys were conducted in fallow fields and roadsides within five miles of the foothills.
- Overall counts remained very low throughout the survey areas, averaging 0-1 BLH per sweep set.
- Host vegetation surveyed included Russian Thistle and Mallow.
- A map identifying BLH counts is provided at the end of the report.

Glenn County BLH Survey		
<u>Location</u>	<u>Date</u>	<u>Average # of BLH per sweep set</u>
Willows	6/12/2025	0.5
Artois	6/12/2025	0.1
Greenwood	6/12/2025	0.5

### Butte County

- BLH population surveys were conducted in fallow fields and roadsides within five miles of the foothills.
- No BLH were observed during survey in Butte County.

### Sacramento County

- BLH population surveys were conducted in fallow fields and roadsides within five miles of the foothills.
- No BLH were observed during survey in Sacramento County.
- Host vegetation surveyed included Mallow.

### Solano County

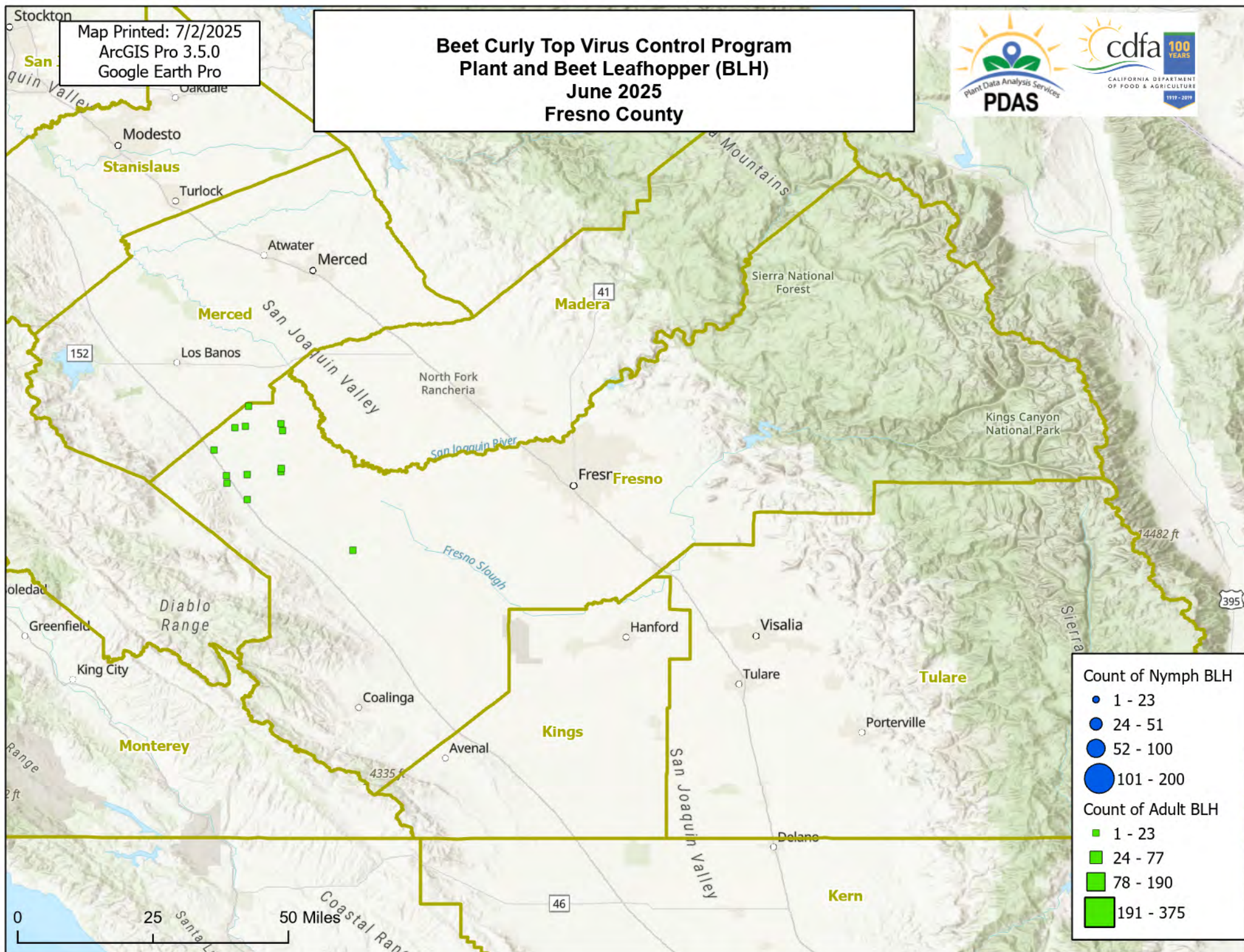
- BLH population surveys were conducted in fallow fields and roadsides within five miles of the foothills.
- Overall counts remained very low throughout the survey areas, averaging 0-1 BLH per sweep set.
- Host vegetation surveyed included Russian Thistle and Mallow.
- A map identifying BLH counts is provided at the end of the report.

Solano County BLH Survey		
<u>Location</u>	<u>Date</u>	<u>Average # of BLH per sweep set</u>
Dixon	6/4/2025	0.2
Dixon	6/24/2025	0.5

**To subscribe to the BCTV monthly report, updates, and alerts, please use the link below:**  
[www.cdfa.ca.gov/subscriptions/](http://www.cdfa.ca.gov/subscriptions/)

Map Printed: 7/2/2025  
ArcGIS Pro 3.5.0  
Google Earth Pro

# Beet Curly Top Virus Control Program Plant and Beet Leafhopper (BLH) June 2025 Fresno County



## Count of Nymph BLH

- 1 - 23
- 24 - 51
- 52 - 100
- 101 - 200

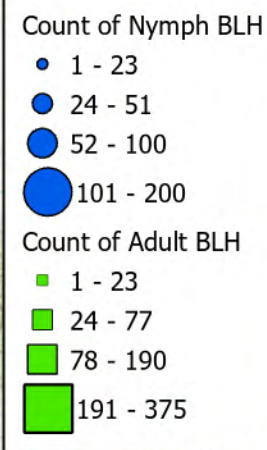
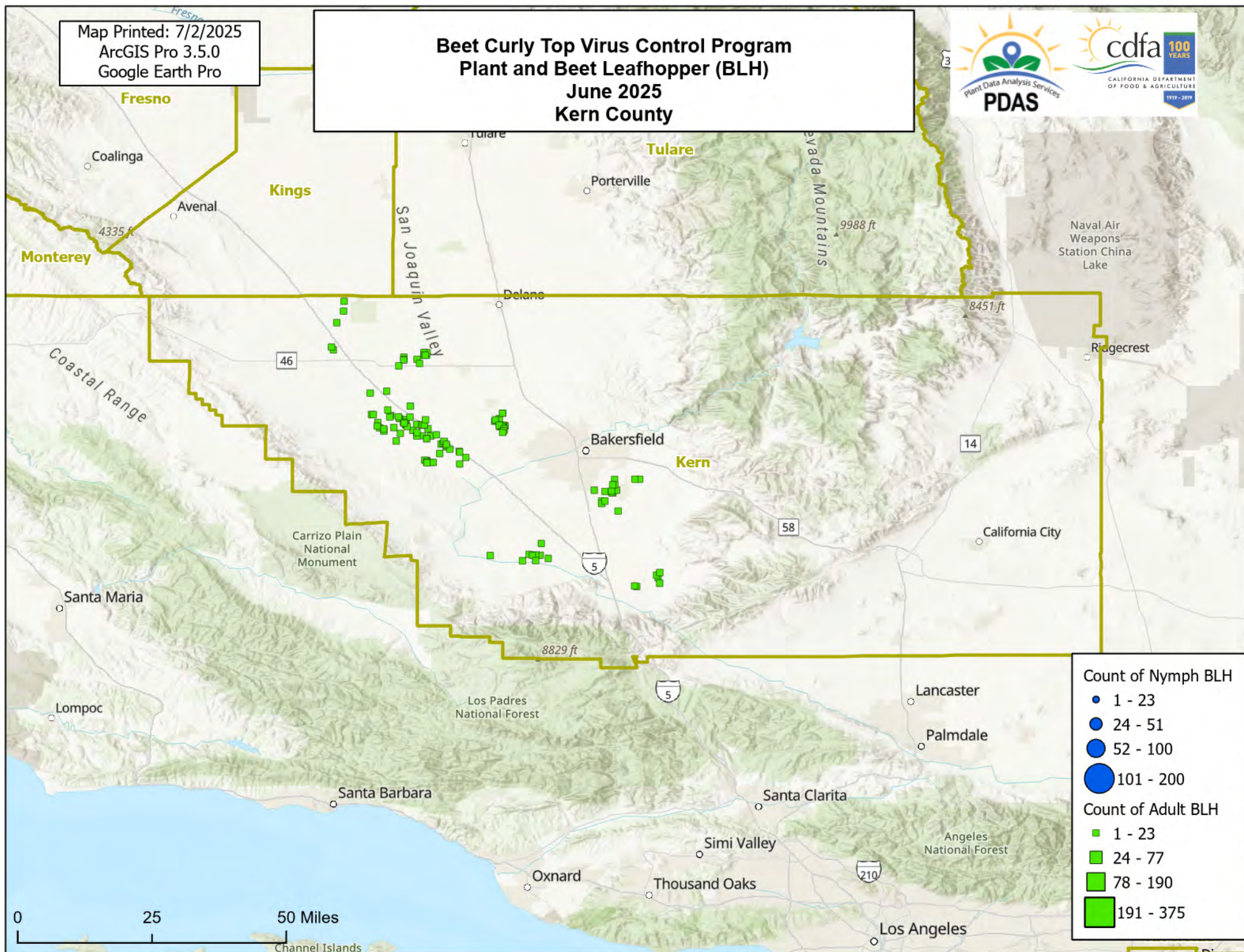
## Count of Adult BLH

- 1 - 23
- 24 - 77
- 78 - 190
- 191 - 375



Map Printed: 7/2/2025  
ArcGIS Pro 3.5.0  
Google Earth Pro

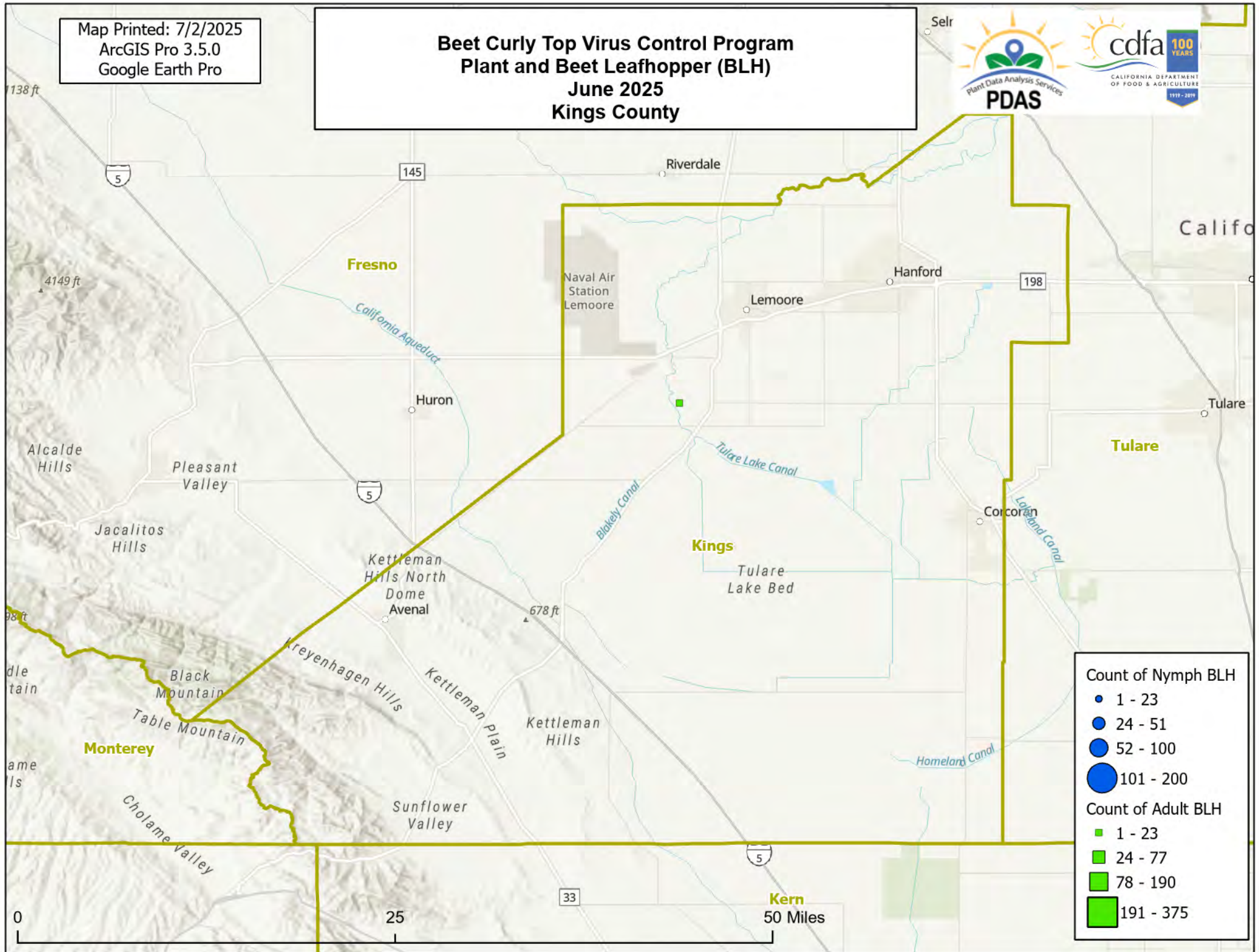
# Beet Curly Top Virus Control Program Plant and Beet Leafhopper (BLH) June 2025 Kern County





Map Printed: 7/2/2025  
ArcGIS Pro 3.5.0  
Google Earth Pro

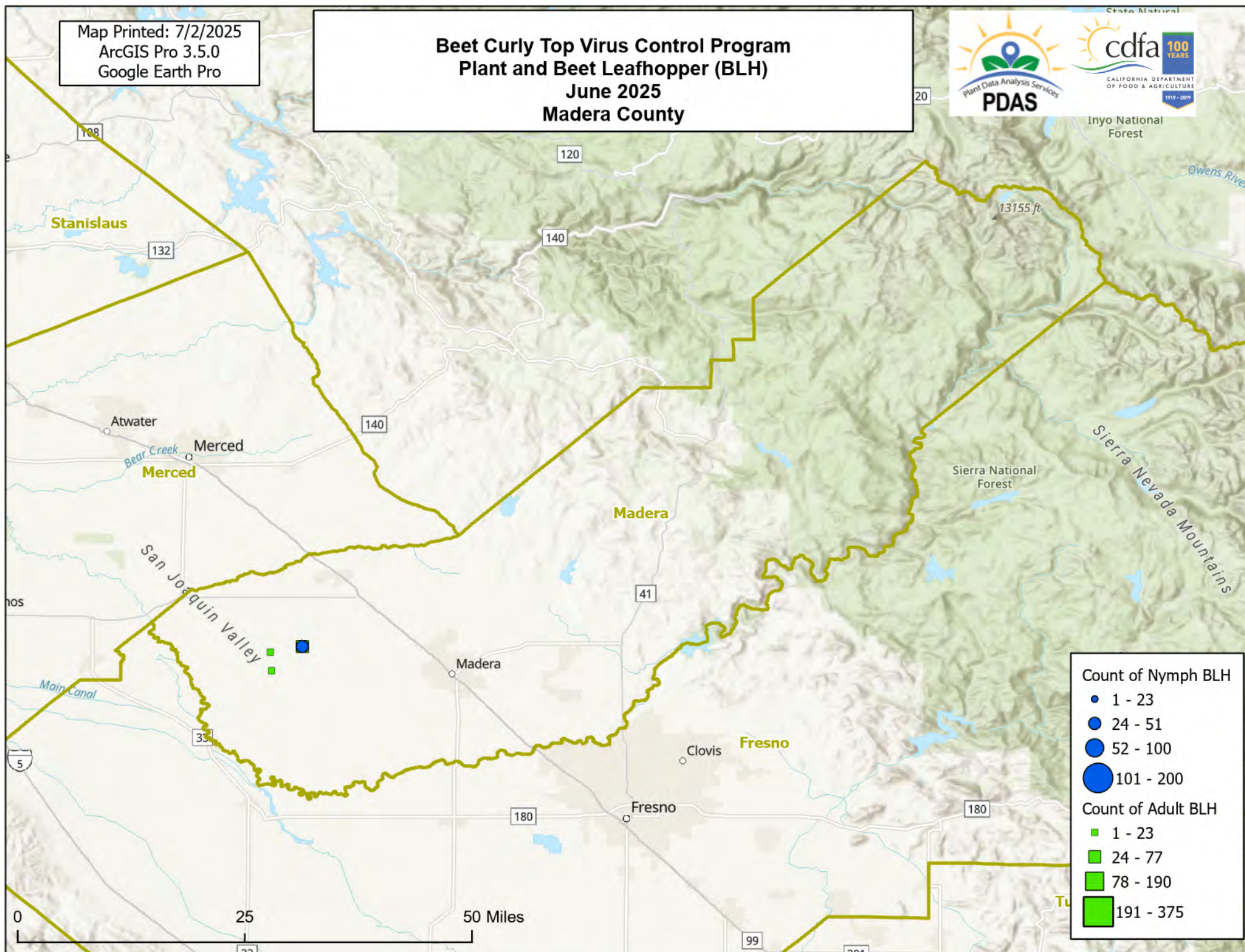
# Beet Curly Top Virus Control Program Plant and Beet Leafhopper (BLH) June 2025 Kings County



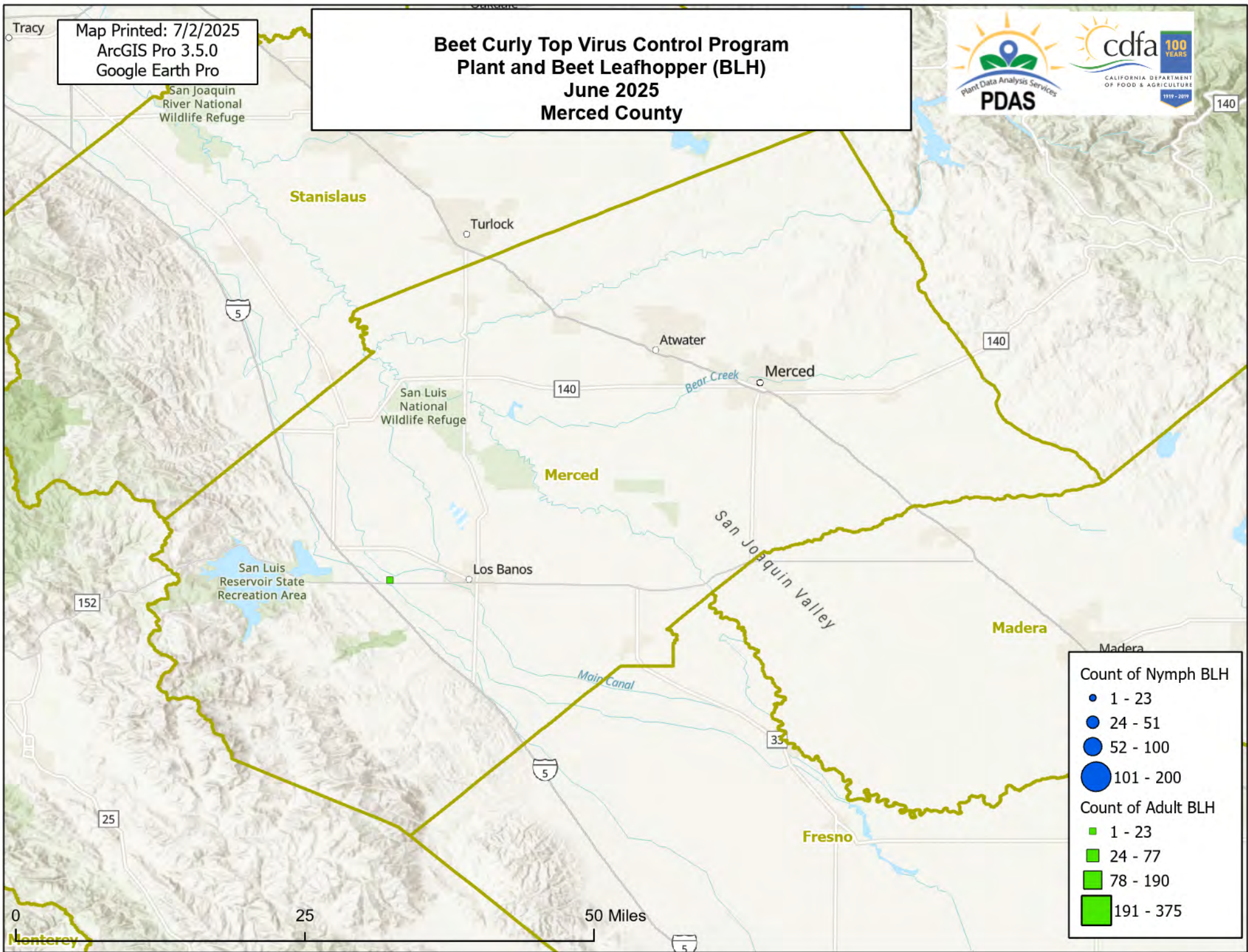


Map Printed: 7/2/2025  
ArcGIS Pro 3.5.0  
Google Earth Pro

# Beet Curly Top Virus Control Program Plant and Beet Leafhopper (BLH) June 2025 Madera County







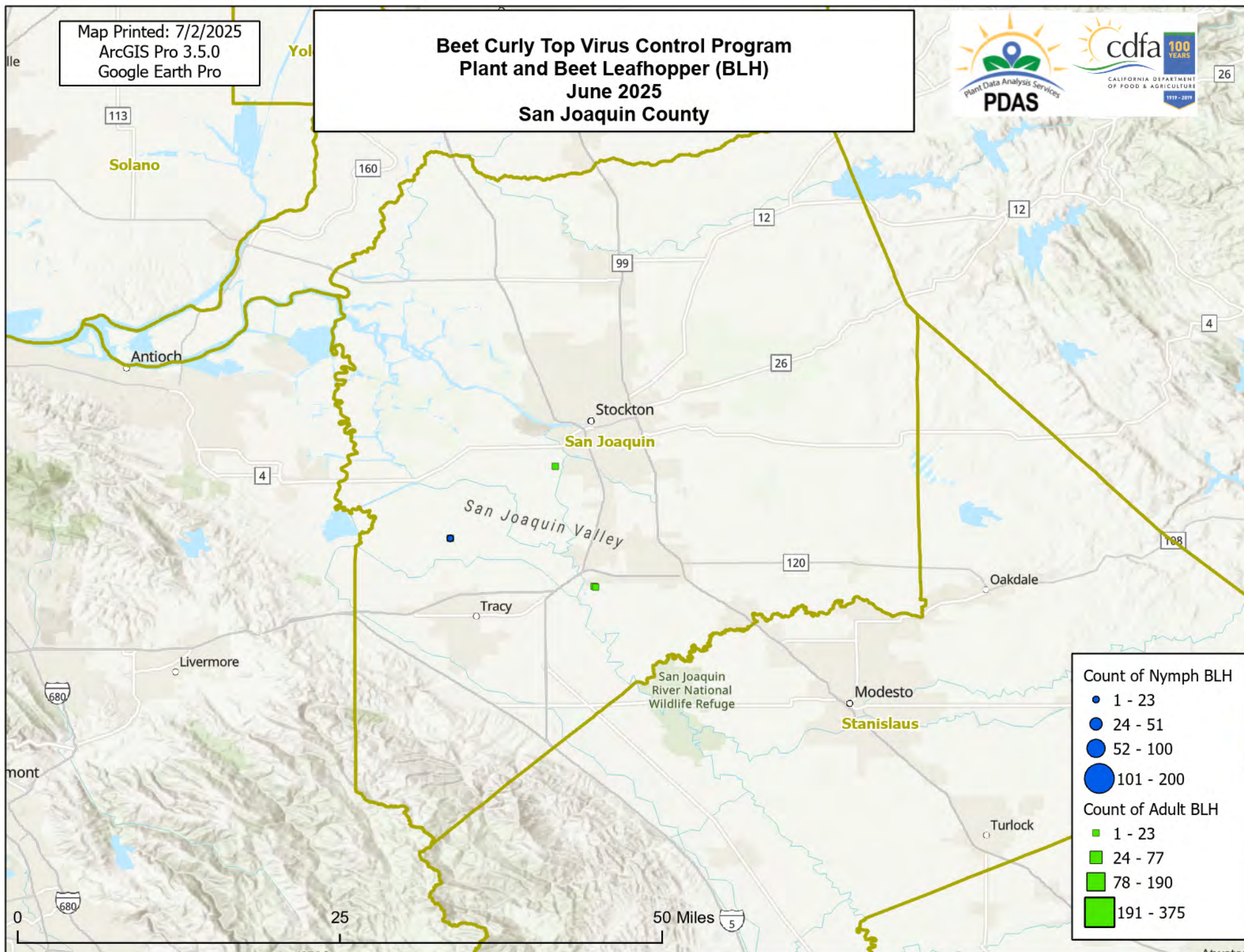


Map Printed: 7/2/2025  
ArcGIS Pro 3.5.0  
Google Earth Pro

# Beet Curly Top Virus Control Program Plant and Beet Leafhopper (BLH) June 2025 San Joaquin County



26



## Count of Nymph BLH

- 1 - 23
- 24 - 51
- 52 - 100
- 101 - 200

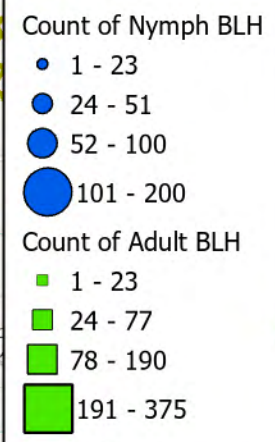
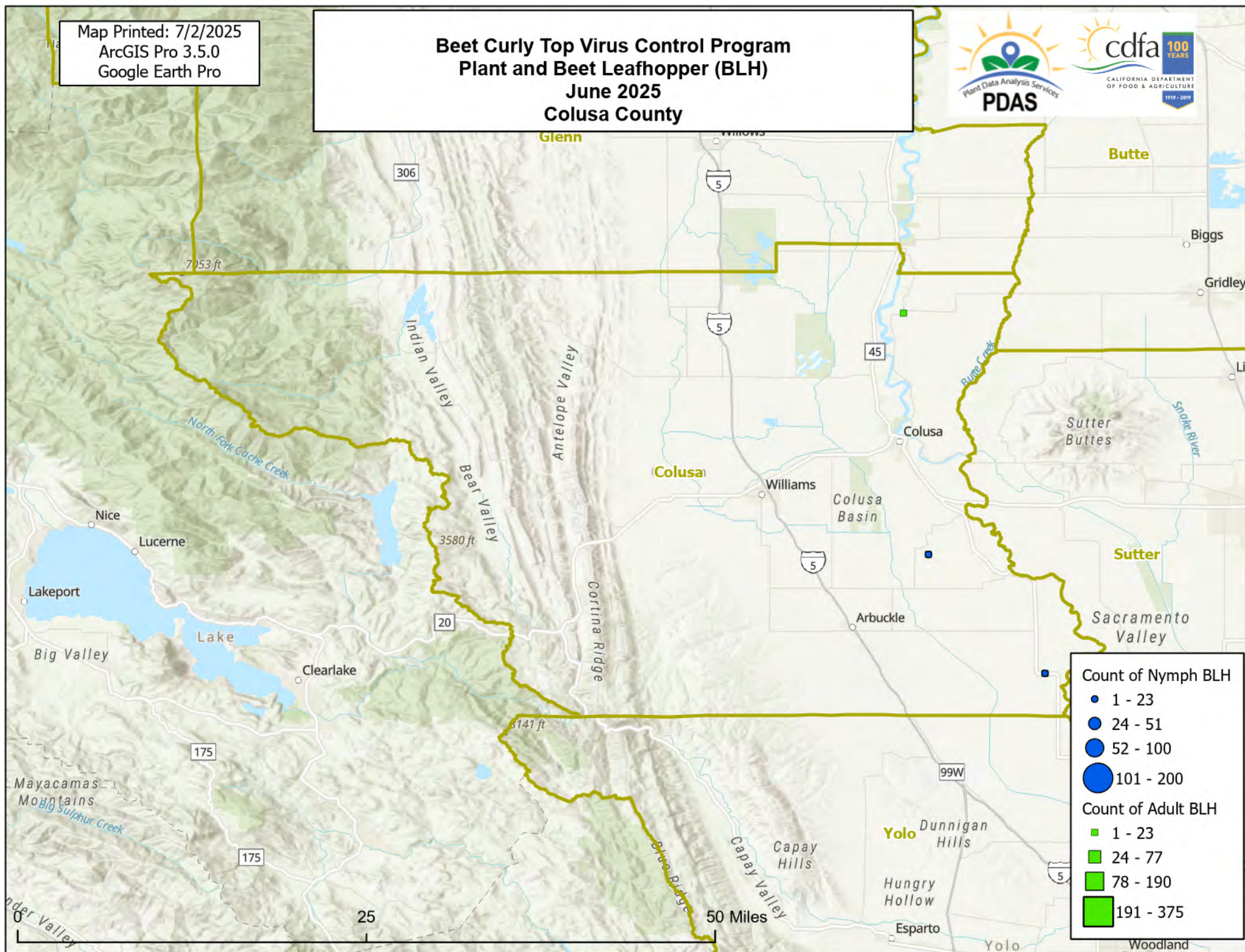
## Count of Adult BLH

- 1 - 23
- 24 - 77
- 78 - 190
- 191 - 375



Map Printed: 7/2/2025  
ArcGIS Pro 3.5.0  
Google Earth Pro

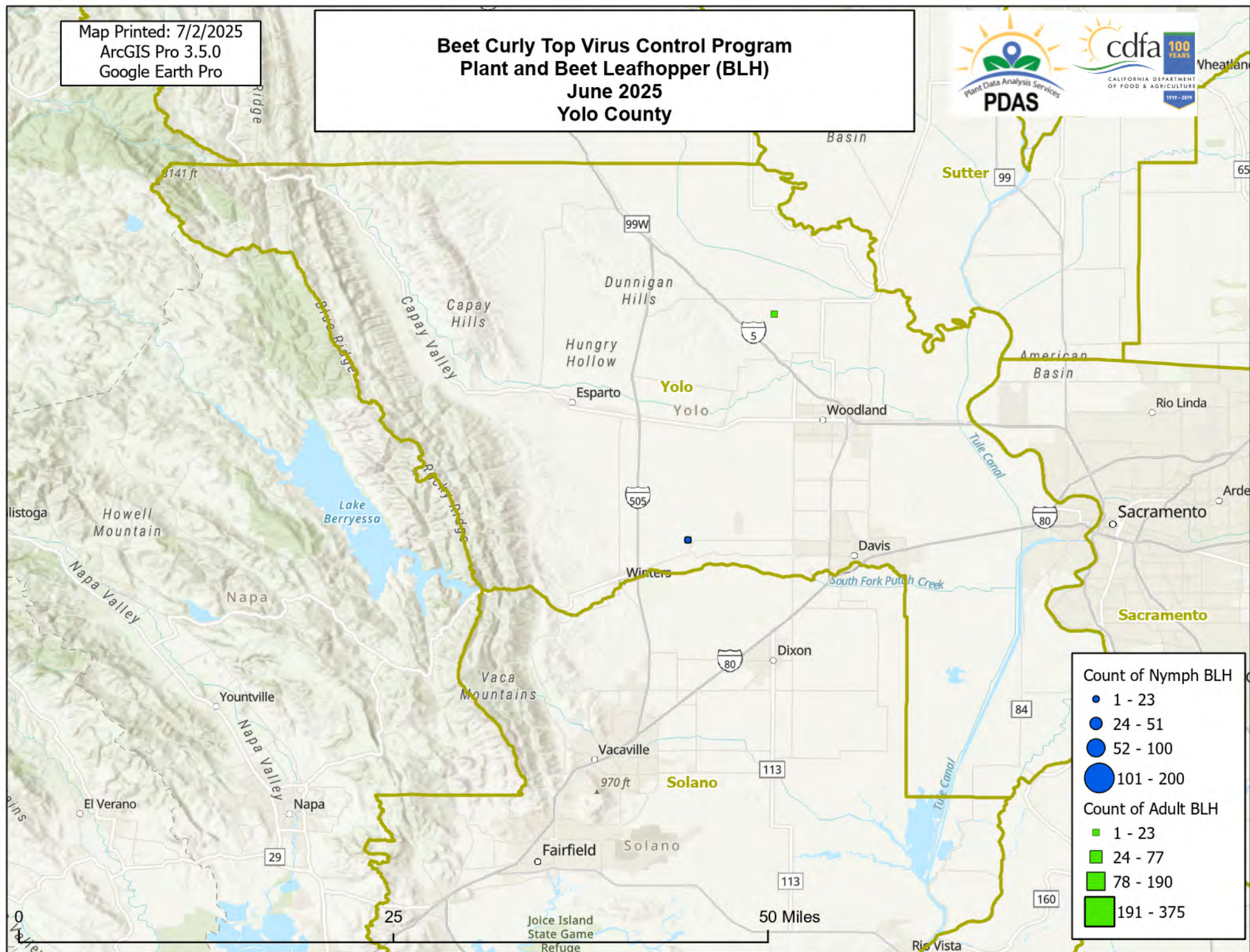
# Beet Curly Top Virus Control Program Plant and Beet Leafhopper (BLH) June 2025 Colusa County





Map Printed: 7/2/2025  
ArcGIS Pro 3.5.0  
Google Earth Pro

# Beet Curly Top Virus Control Program Plant and Beet Leafhopper (BLH) June 2025 Yolo County



## Count of Nymph BLH

- 1 - 23
- 24 - 51
- 52 - 100
- 101 - 200

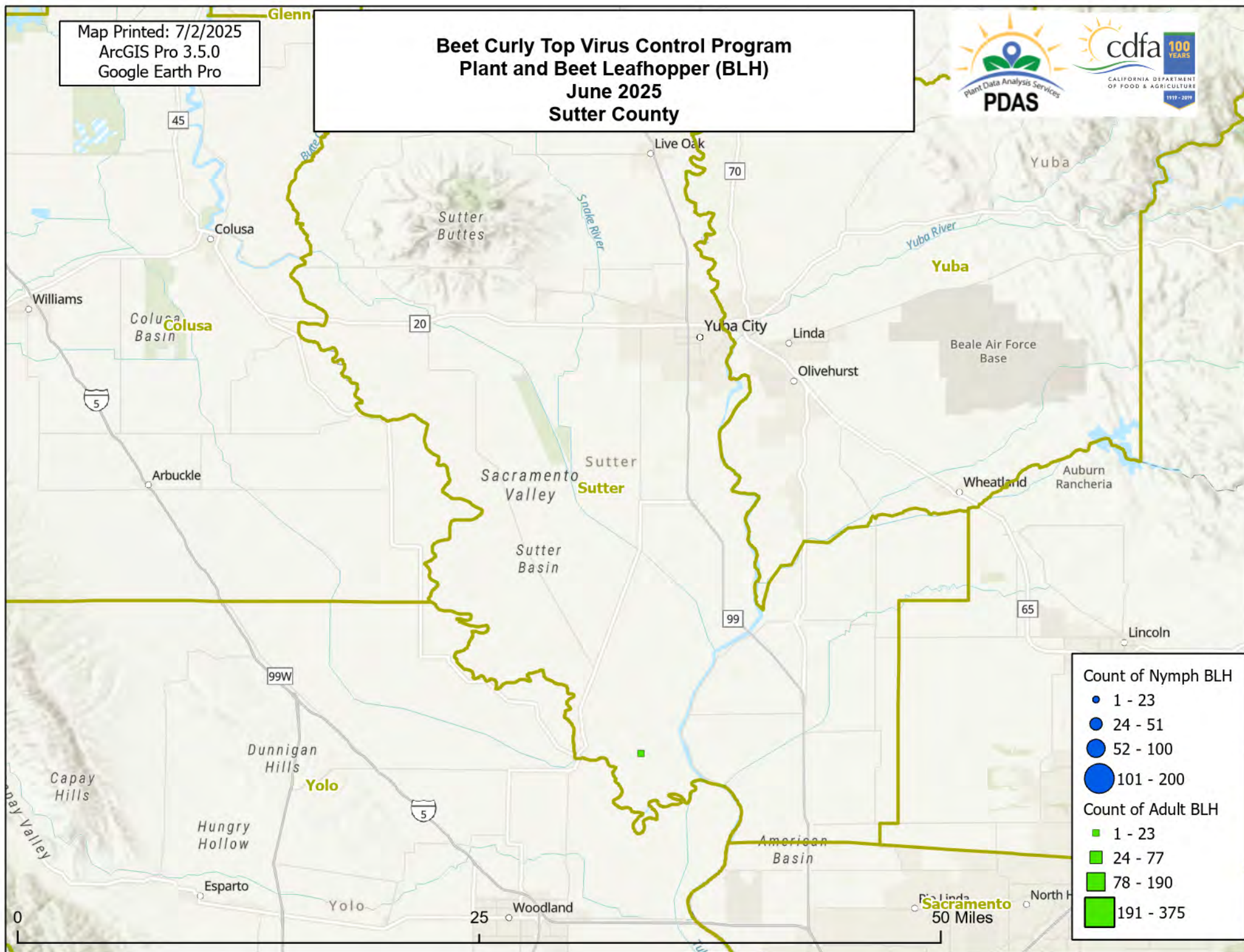
## Count of Adult BLH

- 1 - 23
- 24 - 77
- 78 - 190
- 191 - 375

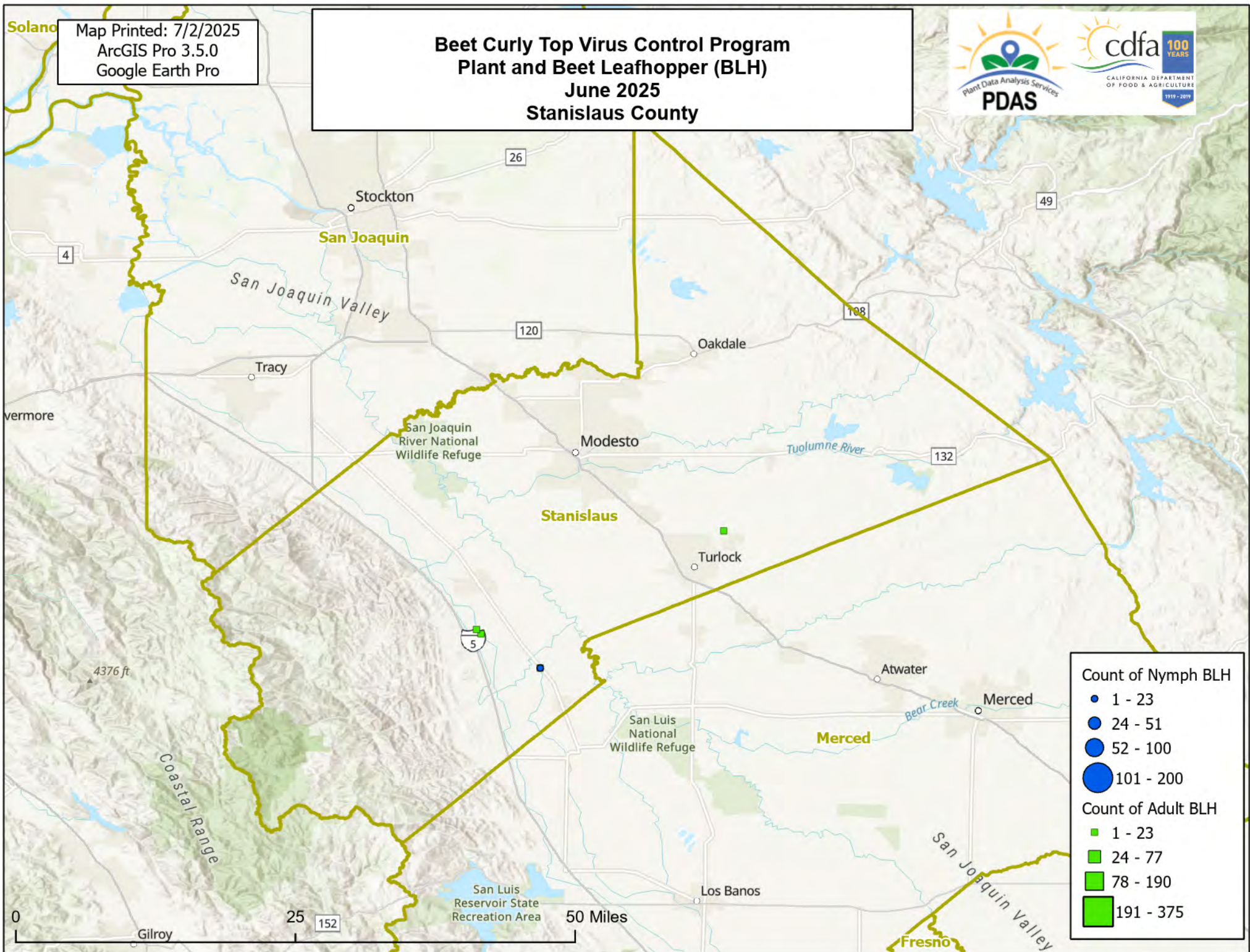


Map Printed: 7/2/2025  
ArcGIS Pro 3.5.0  
Google Earth Pro

# Beet Curly Top Virus Control Program Plant and Beet Leafhopper (BLH) June 2025 Sutter County









Map Printed: 7/2/2025  
ArcGIS Pro 3.5.0  
Google Earth Pro

# Beet Curly Top Virus Control Program Plant and Beet Leafhopper (BLH) June 2025 Glenn County



Tehama

Butte

Glenn

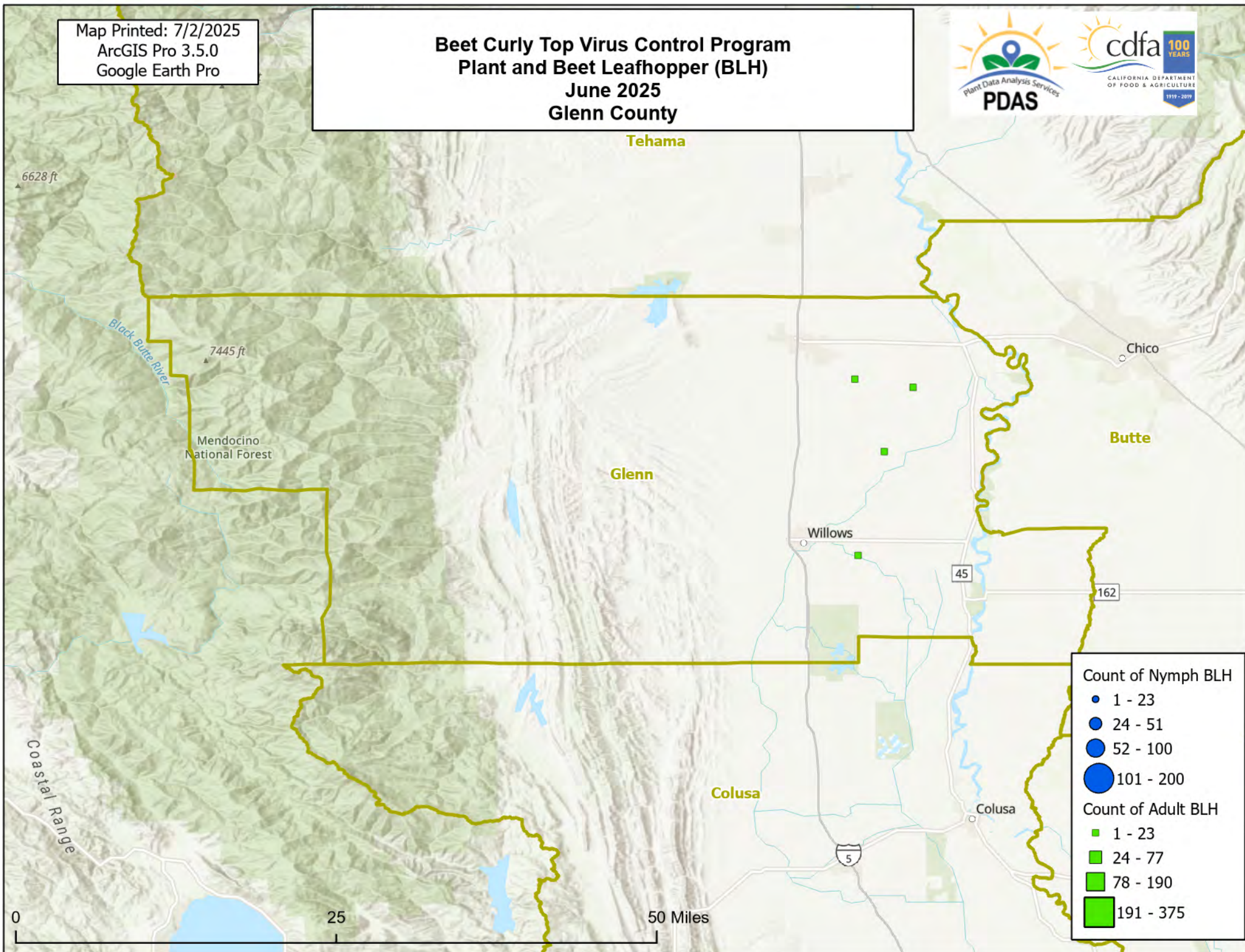
Colusa

## Count of Nymph BLH

- 1 - 23
- 24 - 51
- 52 - 100
- 101 - 200

## Count of Adult BLH

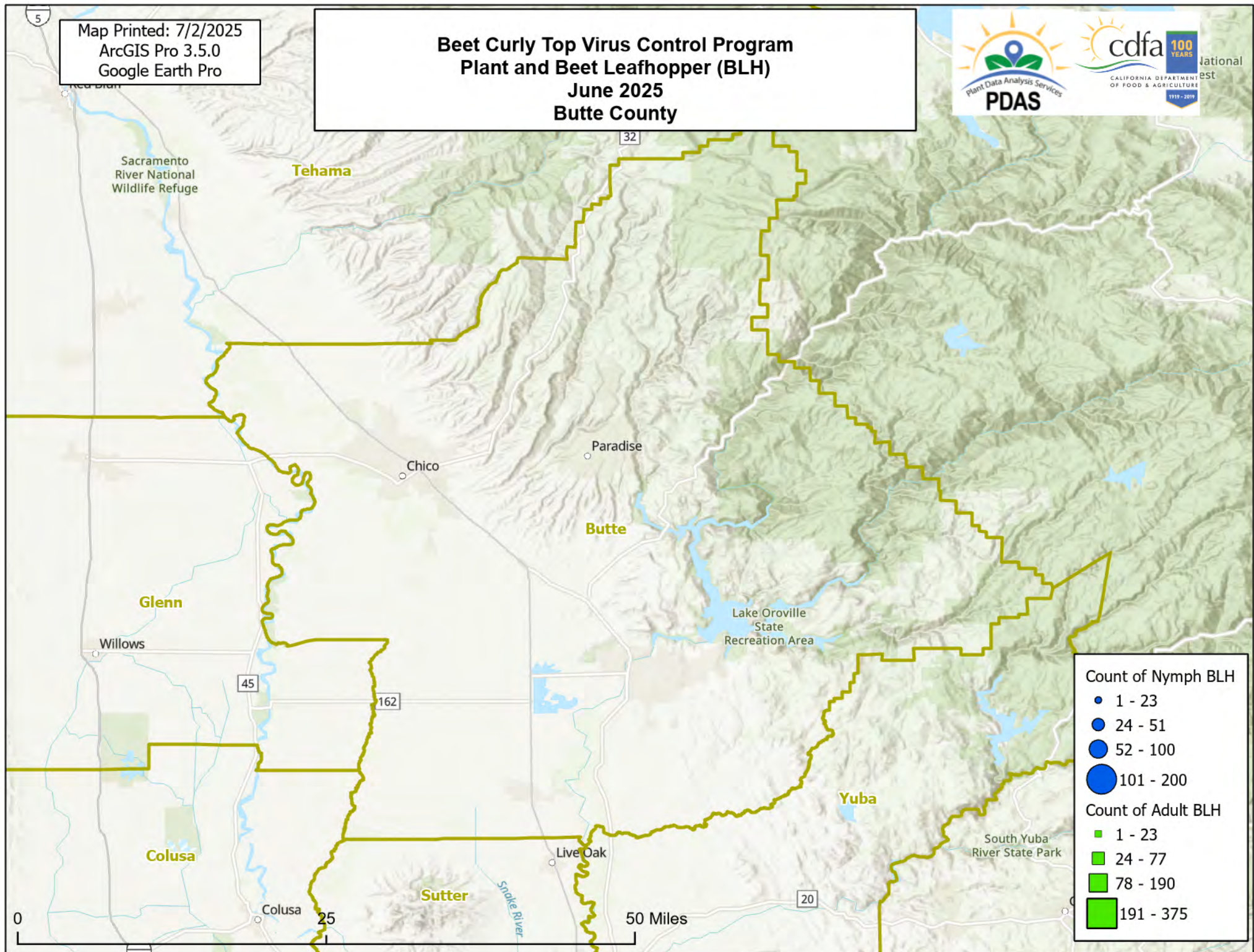
- 1 - 23
- 24 - 77
- 78 - 190
- 191 - 375





Map Printed: 7/2/2025  
ArcGIS Pro 3.5.0  
Google Earth Pro

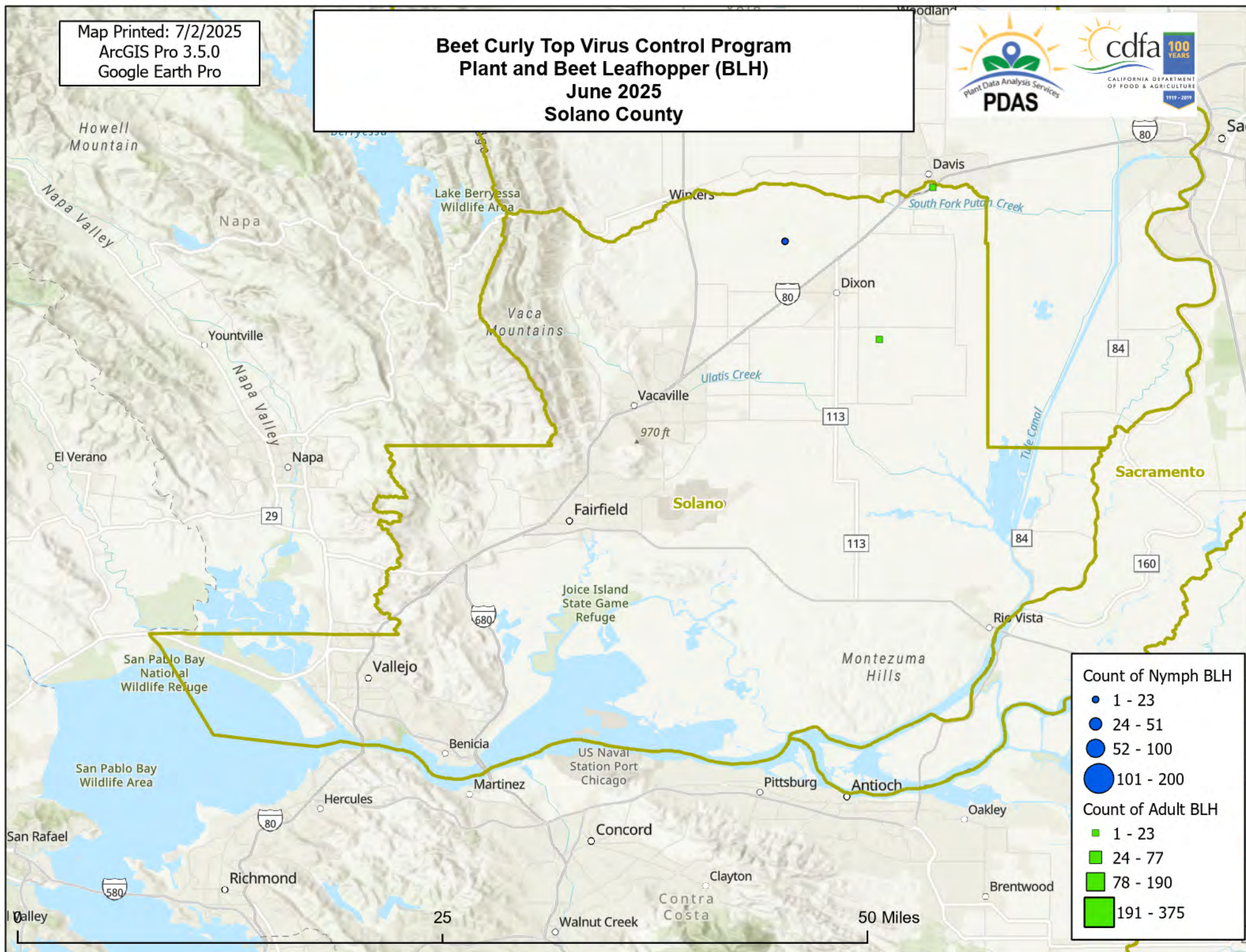
# Beet Curly Top Virus Control Program Plant and Beet Leafhopper (BLH) June 2025 Butte County





Map Printed: 7/2/2025  
ArcGIS Pro 3.5.0  
Google Earth Pro

# Beet Curly Top Virus Control Program Plant and Beet Leafhopper (BLH) June 2025 Solano County



## Count of Nymph BLH

- 1 - 23
- 24 - 51
- 52 - 100
- 101 - 200

## Count of Adult BLH

- 1 - 23
- 24 - 77
- 78 - 190
- 191 - 375