

Beet Curly Top Virus Control Program

Monthly Report

California Department of Food and Agriculture
Plant Health and Pest Prevention Services
Integrated Pest Control Branch
2895 N. Larkin Ave, Suite A
Fresno, CA 93727
Phone: (559) 294-2031
Fax: (559) 294-2037



February 2025

Program Update

- In February, Beet Curly Top Virus Control Program (BCTVCP) personnel conducted beetle leafhopper (BLH) and vegetation surveys in the foothills on the westside of the San Joaquin and Sacramento Valleys in Fresno, Kern, Kings, Yolo, Sutter, Glenn, Merced, Stanislaus, Butte, Sacramento, San Joaquin, Madera, and Colusa counties.
- BLH counts remained very low or not present in all survey areas statewide (0-2 BLH per sweep). There has been an increase in nymph activity in the hillsides, but it remains isolated.
- Sporadic rain events have facilitated some additional germination of host plant vegetation in the hillsides, but annual grasses account for the highest percentages of vegetation in the hillsides limiting BLH population growth.
- Host plant vegetation in the hillsides is experiencing advance stages of die off in the 75-95% range. Filaree, peppergrass, and plantago are commonly observed with stunted growth and lack of abundance. The current rate of die-off in some areas will reduce nymph populations prior to migration.
- Valley floor survey has expanded monitoring due to the dry hillside conditions. Commonly observed host plant vegetation is Mallow, Mustard, and London Rocket.
- The Program would like to remind growers and PCA's that any fallow fields or weedy areas adjacent to susceptible crops should be inspected for BLH prior to disking or mowing. The Program can be available for BLH surveys and, if needed, control of fallow fields and/or roadsides where BLH counts reach the control thresholds.
- Please visit the Program's webpage to view Program reports and alerts. https://www.cdfa.ca.gov/plant/ipc/curlytopvirus/ctv_hp.htm
- The BCTVCP has deployed a Beet Leafhopper Sighting Report that industry can use to report BLH or CTV incidence in the field. This report is available using the following web browser link: <https://arcg.is/O9LyK> or by downloading the ArcGIS Survey123 app from the Google Play Store or Apple App Store and using the QR code below. A user guide for the BLH Sighting Report is available on the BCTVCP webpage.



- For program inquiries or questions regarding this report, please contact Kendra Tapia at kendra.tapia@cdfa.ca.gov or (916) 823-1169.

2025 Beet Curly Top Virus 3-Year Average BLH Counts

February County Average BLH Counts				
<u>County</u>	<u>2022</u>	<u>2023</u>	<u>2024</u>	<u>2025</u>
Fresno	1.3	0.3	2.0	0.4
Kings	0.1	0.1	1.6	0.6
Kern	0.3	0.1	1.5	1.2
Madera	-	-	0	0.01
Merced	-	0	0.04	0
Butte	-	-	0	0
Colusa	-	-	0	0.1
Glenn	-	0.8	0.01	0
Sacramento	-	-	0	0.08
San Joaquin	-	-	0.7	0.05
Stanislaus	-	-	0.2	0.02
Sutter	-	-	0.02	0
Solano	-	-	0	0
Yolo	-	-	0	0.01
San Benito	1.1	-	-	-

2025 Beet Curly Top Virus Sample Results

January 2025- BCTV Sample Results by County														
	Fresno	Kings	Kern	Merced	Madera	Glenn	Yolo	Colusa	Sutter	Butte	Solano	Sacramento	Stanislaus	San Joaquin
Positive BLH	-	1	-	-	-	-	-	-	-	-	-	-	-	-
Negative BLH	2	2	-	-	-	-	-	-	-	-	-	-	-	-
Positive Host Plant	1	-	-	-	-	-	-	-	-	-	-	-	-	-
Negative Host Plant	5	4	-	-	-	3	7	3	4	4	3	2	-	7

February 2025- BCTV Sample Results by County														
	Fresno	Kings	Kern	Merced	Madera	Glenn	Yolo	Colusa	Sutter	Butte	Solano	Sacramento	Stanislaus	San Joaquin
Positive BLH	6	3	1	-	-	-	-	-	-	-	-	-	-	-
Negative BLH	7	2	5	-	-	-	-	-	-	-	-	-	-	-
														-
Positive Host Plant	-	-	-	-	-	-	1	-	-	-	-	-	-	-
Negative Host Plant	72	21	27	12	10	10	6	4	6	2	10	2	9	7

County Reports

Fresno County

- BLH population surveys were conducted in the overwintering foothills as well as in fallow fields and roadsides within five miles of the foothills.
- Overall counts remained low throughout survey areas, averaging 0-1 BLH per sweep set.
- Host plant vegetation surveyed included Mallow, Filaree, Plantago, Mustards, Russian Thistle, Peppergrass, Shepherd's Purse, and London Rocket.
- A map identifying the location of the BLH counts is provided at the end of the report.

Fresno County BLH Survey		
<u>Location</u>	<u>Date</u>	<u>Average # of BLH per sweep set</u>
Big C	2/3/2025	0.5
Gyp Pitts	2/3/2025	0.2
Levis	2/4/2025	0.2
North of Panoche Creek	2/10/2025	0.8
Domegine	2/11/2025	0.1
W Manning Ave	2/12/2025	0.4
Staircase	2/18/2025	0.3
W Cerini Ave	2/18/2025	0.2
W Clarkson Ave	2/18/2025	0.2
Big C	2/19/2025	0.3
Chevron	2/19/2025	0.1
Coalinga Nose	2/19/2025	1.1
Gyp Pitts	2/20/2025	0.03
Jacalitos	2/20/2025	2.3
Los Gatos	2/20/2025	1.4
South Kamm	2/20/2025	0.2
North Tip	2/24/2025	0.5
Tumey Hills	2/24/2025	0.3
Panoche Rd	2/24/2025	0.4
Coalinga	2/24/2025	1.0
Jacalitos	2/25/2025	0.1
Los Gatos	2/25/2025	2.1
North of Panoche Creek	2/25/2025	0.2
Tumey Hills	2/25/2025	0.3
Big C	2/26/2025	4.0
Chevron	2/26/2025	0.1
Coalinga Nose	2/26/2025	2.2
Domegine	2/26/2025	0.2
North Chevron	2/26/2025	0.1
Coalinga	2/26/2025	0.3
S El Dorado Ave	2/26/2025	0.4
Jensen Ave	2/27/2025	0.2
Firebaugh	2/27/2025	0.3
S Russell Ave	2/27/2025	1.0
Jacalitos	2/27/2025	1.3

Kern County

- BLH population surveys were conducted in the overwintering foothills as well as in fallow fields and roadsides within five miles of the foothills.
- Overall counts remained low throughout survey areas, averaging 0-1 BLH per sweep set.
- Host plant vegetation surveyed included Filaree, Plantago, Peppergrass, and Mallow.
- A map identifying the location of the BLH counts is provided at the end of the report.

Kern County BLH Survey		
<u>Location</u>	<u>Date</u>	<u>Average # of BLH per sweep set</u>
Hovey Hills	2/3/2025	1.0
Kitty Care	2/3/2025	1.5
Pentland	2/3/2025	0.5
Buena Vista Hills	2/4/2025	0.6
Elk Hills	2/11/2025	0.2
Gardner Field	2/11/2025	1.0
South Lake	2/11/2025	0.1
Triple 5's	2/12/2025	3.7
36 Hills	2/18/2025	1.5
Western Mineral	2/18/2025	2.5
McKittrick West	2/19/2025	1.6
Buena Vista Hills	2/20/2025	0.3
Midway South Flats	2/20/2025	0.1
West Buena Vista Hills	2/20/2025	1.4
Hovey Hills	2/24/2025	0.6
Valley Acres Flat	2/24/2025	3.4
Kitty Care	2/25/2025	1.2
Shooting Range	2/25/2025	0.1
Elk Hills	2/26/2025	0.2
Elk Hills	2/26/2025	1.9
36 Hills	2/27/2025	0.1
Triple 5's	2/27/2025	2.3

Kings County

- BLH population surveys were conducted in the overwintering foothills as well as in fallow fields and roadsides within five miles of the foothills.
- Overall counts remained low throughout survey areas, averaging 0-2 BLH per sweep set. There was one area that had some moderate levels of BLH activity (10-50 BLH per sweep set), but it remains isolated.
- Host plant vegetation surveyed included London Rocket, Filaree, Peppergrass, Shepherd's Purse, and Mallow.
- A map identifying the location of the BLH counts is provided at the end of the report.

Kings County BLH Survey		
<u>Location</u>	<u>Date</u>	<u>Average # of BLH per sweep set</u>
Nevada Ave	2/12/2025	0.2
25th Ave	2/12/2025	0.7
Kettleman Hills s/o 41	2/18/2025	0.5
Kettleman Hills n/o 41	2/19/2025	0.6
Kettleman Hills s/o 41	2/24/2025	4.7
Kettleman City	2/27/2025	0.4

Madera County

- BLH population surveys were conducted in fallow fields and roadsides within five miles of the foothills.
- Overall counts remained low throughout survey areas, averaging 0-1 BLH per sweep set.
- Host vegetation surveyed included Mallow, Filaree, Shepherd's Purse, and London Rocket.
- A map identifying the location of the BLH counts is provided at the end of the report.

Madera County BLH Survey		
<u>Location</u>	<u>Date</u>	<u>Average # of BLH per sweep set</u>
Ave 7 1/2	2/11/2025	0.2

Merced County

- BLH population surveys were conducted in fallow fields and roadsides within five miles of the foothills.
- No BLH were observed during survey in Merced County.
- Host vegetation surveyed included Mallow, Mustards, Shepherd's Purse, and Filaree.

San Joaquin County

- BLH population surveys were conducted in fallow fields and roadsides within five miles of the foothills.
- Overall counts remained low throughout the survey areas, averaging 0-1 BLH per sweep set.
- Host vegetation surveyed included Mallow, Filaree, and Mustards.
- A map identifying BLH counts is provided at the end of the report.

San Joaquin County BLH Survey		
<u>Location</u>	<u>Date</u>	<u>Average # of BLH per sweep set</u>
Tracy Hills	2/12/2025	0.4
W Woodbridge Rd	2/27/2025	0.4

Colusa County

- BLH population surveys were conducted in fallow fields and roadsides within five miles of the foothills.
- Overall counts remained low throughout the survey areas, averaging 0-2 BLH per sweep set.
- Host vegetation surveyed included Mallow, Mustards, and Filaree.
- A map identifying BLH counts is provided at the end of the report.

Colusa County BLH Survey		
<u>Location</u>	<u>Date</u>	<u>Average # of BLH per sweep set</u>
Leesville Rd	2/25/2025	1.2

Yolo County

- BLH population surveys were conducted in fallow fields and roadsides within five miles of the foothills.
- Overall counts remained very low throughout the survey areas, averaging 0-1 BLH per sweep set.
- Host vegetation surveyed included Mallow, Filaree, and Mustards.
- A map identifying BLH counts is provided at the end of the report.

Yolo County BLH Survey		
<u>Location</u>	<u>Date</u>	<u>Average # of BLH per sweep set</u>
Woodland	2/27/2025	0.2

Sutter County

- BLH population surveys were conducted in fallow fields and roadsides within five miles of the foothills.
- No BLH were observed during survey in Sutter County.
- Host vegetation surveyed included Mallow, Filaree, and Mustards.

Stanislaus County

- BLH population surveys were conducted in fallow fields and roadsides within five miles of the foothills.
- Overall counts remained very low throughout the survey areas, averaging 0-1 BLH per sweep set.
- Host vegetation surveyed included Mustards, Filaree, and Mallow.
- A map identifying BLH counts is provided at the end of the report.

Stanislaus County BLH Survey		
<u>Location</u>	<u>Date</u>	<u>Average # of BLH per sweep set</u>
Vernalis	2/3/2025	0.2

Glenn County

- BLH population surveys were conducted in fallow fields and roadsides within five miles of the foothills.
- No BLH were observed during survey in Glenn County.
- Host vegetation surveyed included Mustards, Filaree, and Mallow.

Butte County

- BLH population surveys were conducted in fallow fields and roadsides within five miles of the foothills.
- No BLH were observed during survey in Butte County.
- Host vegetation surveyed included Filaree.

Sacramento County

- BLH population surveys were conducted in fallow fields and roadsides within five miles of the foothills.
- Overall counts remained very low throughout the survey areas, averaging 0-1 BLH per sweep set.
- Host vegetation surveyed included Filaree and Mallow.
- A map identifying BLH counts is provided at the end of the report.

Sacramento County BLH Survey		
<u>Location</u>	<u>Date</u>	<u>Average # of BLH per sweep set</u>
Ryde	2/26/2025	0.4

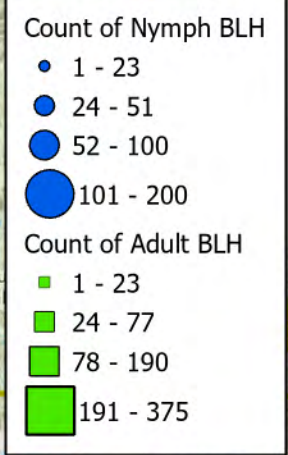
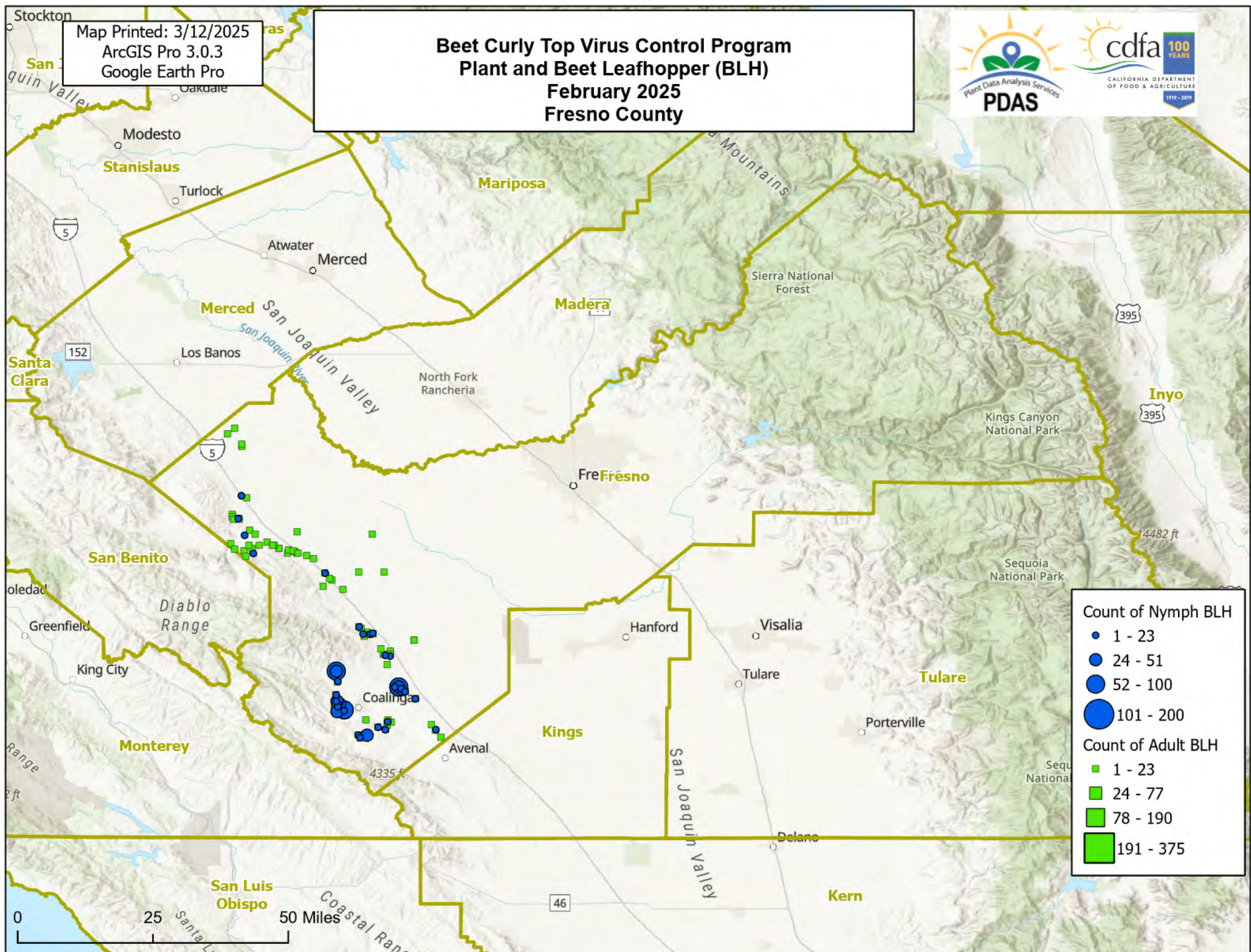
Solano County

- BLH population surveys were conducted in fallow fields and roadsides within five miles of the foothills.
- No BLH were observed during survey in Solano County.
- Host vegetation surveyed included Mallow, Mustards, and Filaree.

To subscribe to the BCTV monthly report, updates, and alerts, please use the link below:
www.cdfa.ca.gov/subscriptions/

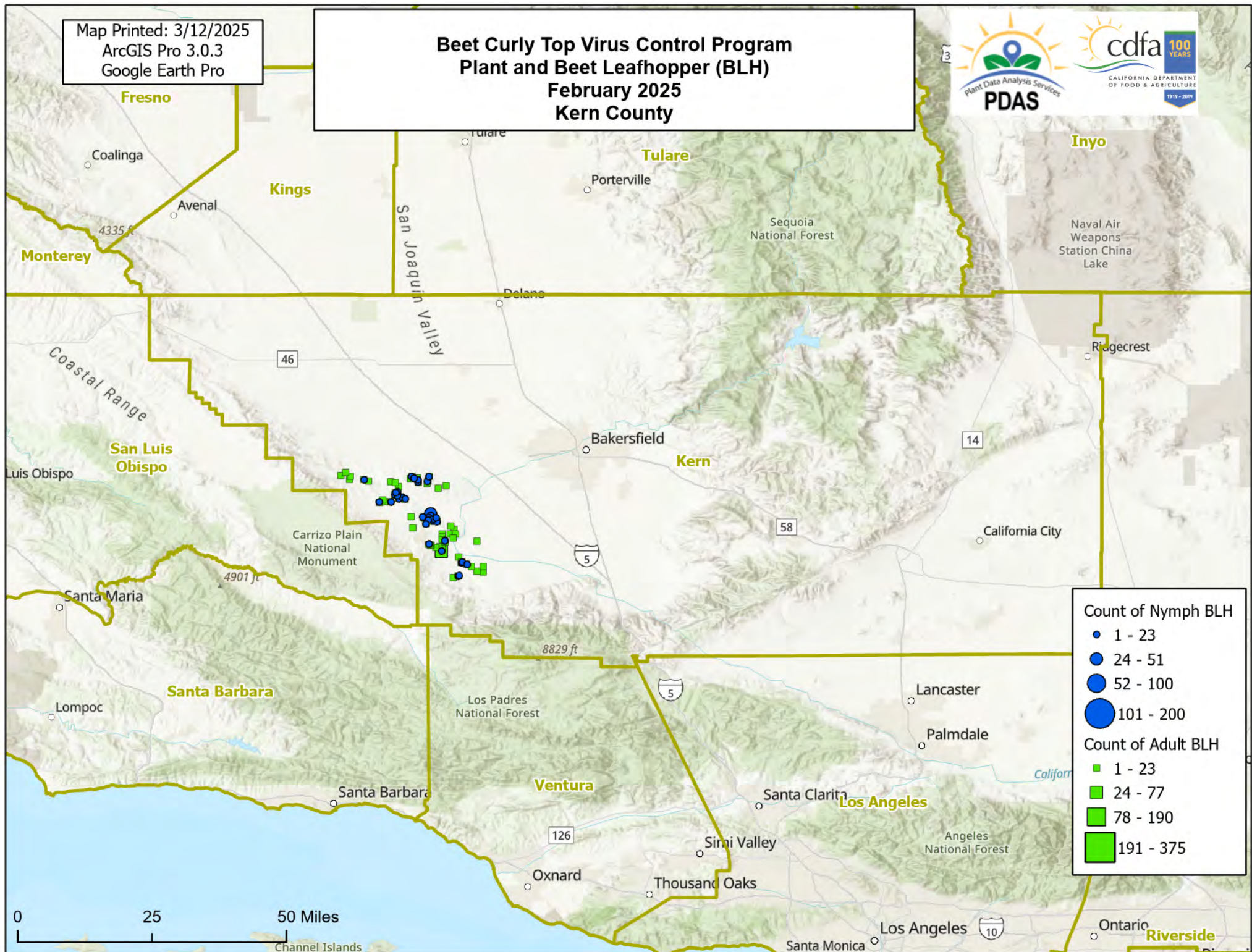
Map Printed: 3/12/2025
ArcGIS Pro 3.0.3
Google Earth Pro

Beet Curly Top Virus Control Program Plant and Beet Leafhopper (BLH) February 2025 Fresno County



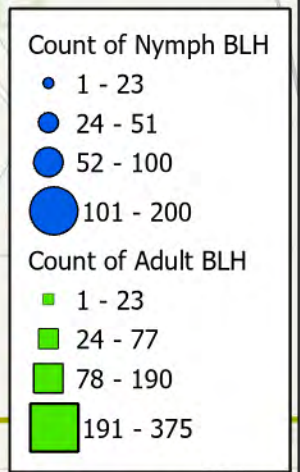
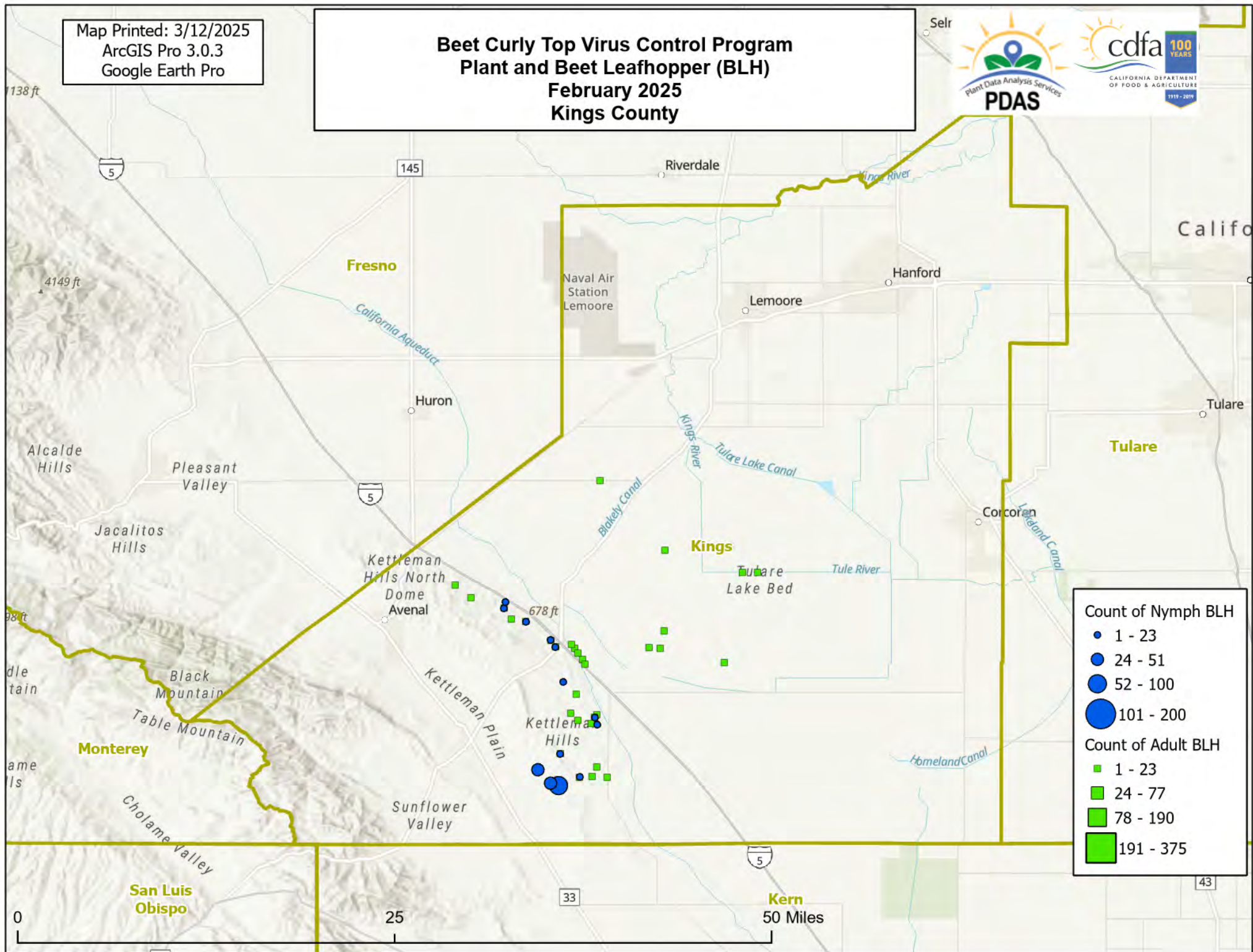
Map Printed: 3/12/2025
ArcGIS Pro 3.0.3
Google Earth Pro

Beet Curly Top Virus Control Program Plant and Beet Leafhopper (BLH) February 2025 Kern County



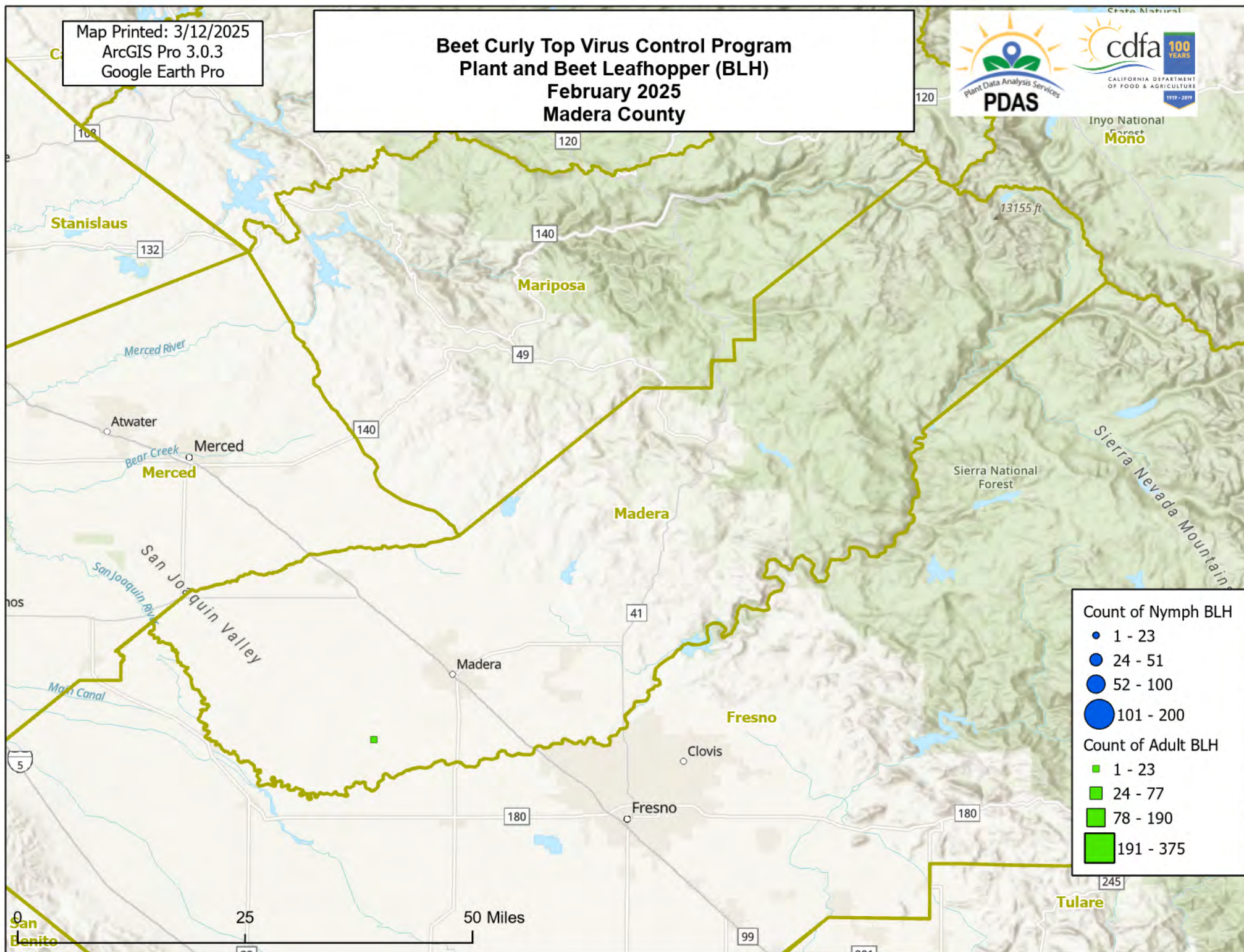
Map Printed: 3/12/2025
ArcGIS Pro 3.0.3
Google Earth Pro

Beet Curly Top Virus Control Program Plant and Beet Leafhopper (BLH) February 2025 Kings County



Map Printed: 3/12/2025
ArcGIS Pro 3.0.3
Google Earth Pro

Beet Curly Top Virus Control Program Plant and Beet Leafhopper (BLH) February 2025 Madera County



Count of Nymph BLH

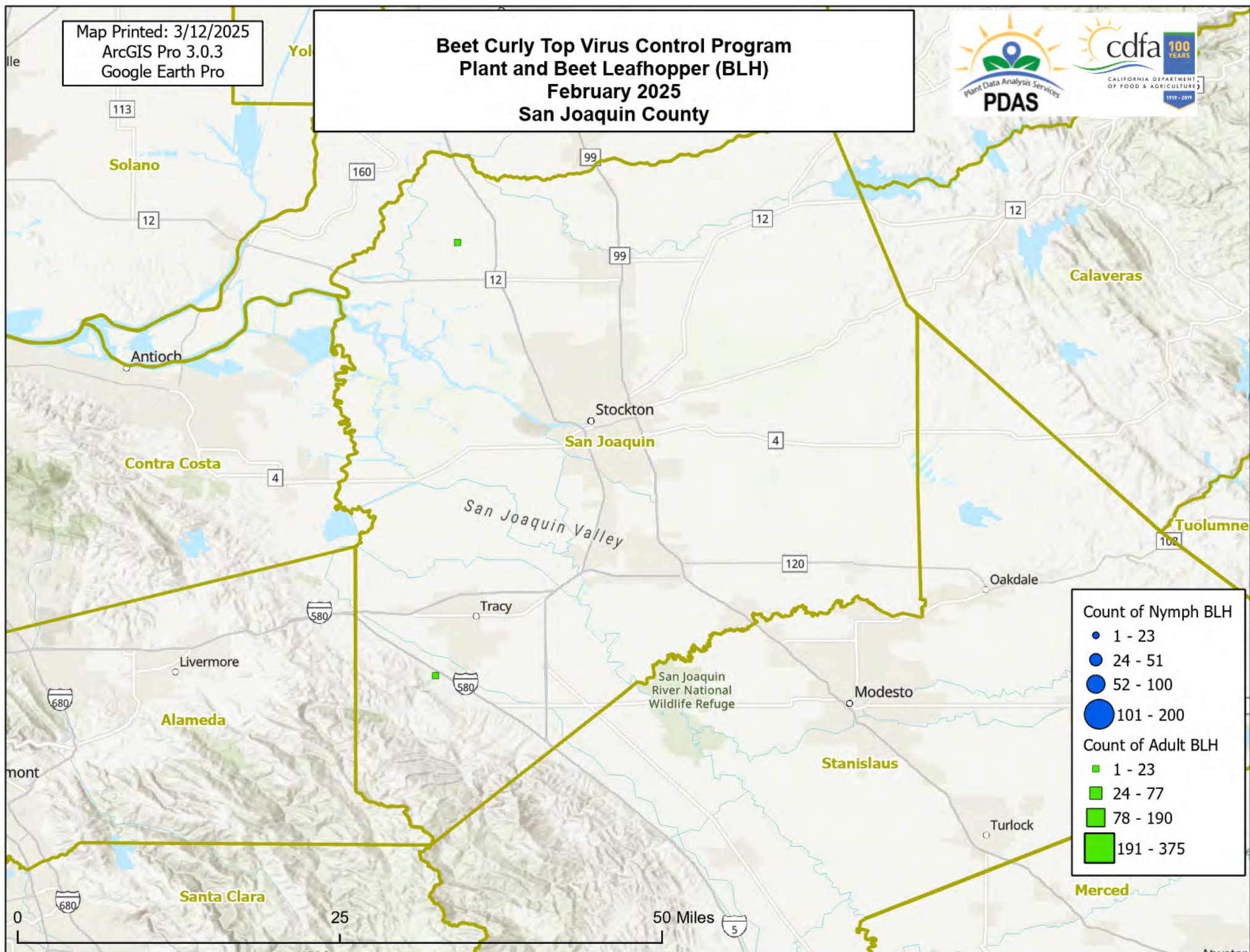
- 1 - 23
- 24 - 51
- 52 - 100
- 101 - 200

Count of Adult BLH

- 1 - 23
- 24 - 77
- 78 - 190
- 191 - 375

Map Printed: 3/12/2025
ArcGIS Pro 3.0.3
Google Earth Pro

Beet Curly Top Virus Control Program Plant and Beet Leafhopper (BLH) February 2025 San Joaquin County



Count of Nymph BLH

- 1 - 23
- 24 - 51
- 52 - 100
- 101 - 200

Count of Adult BLH

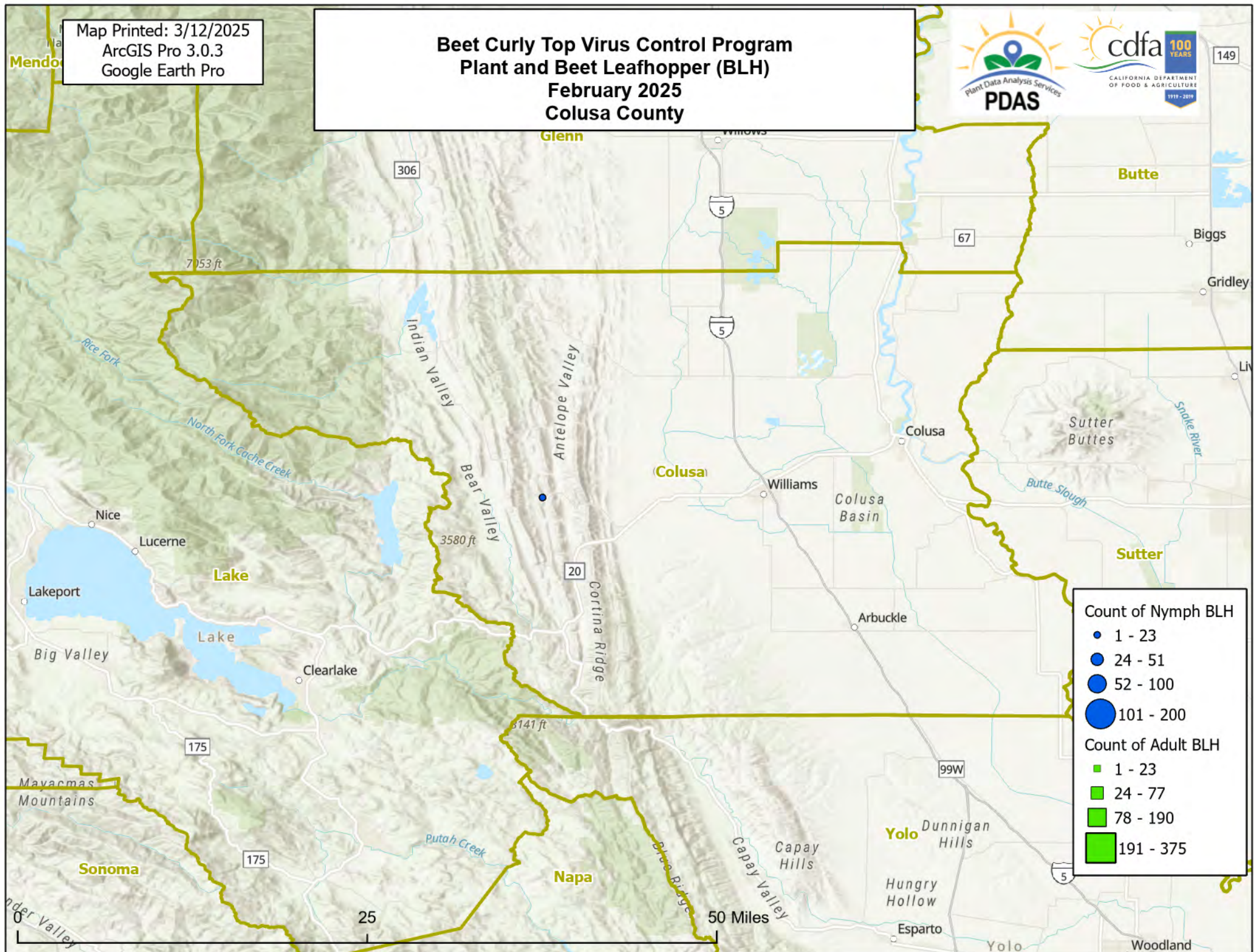
- 1 - 23
- 24 - 77
- 78 - 190
- 191 - 375

Map Printed: 3/12/2025
ArcGIS Pro 3.0.3
Google Earth Pro

Beet Curly Top Virus Control Program Plant and Beet Leafhopper (BLH) February 2025 Colusa County

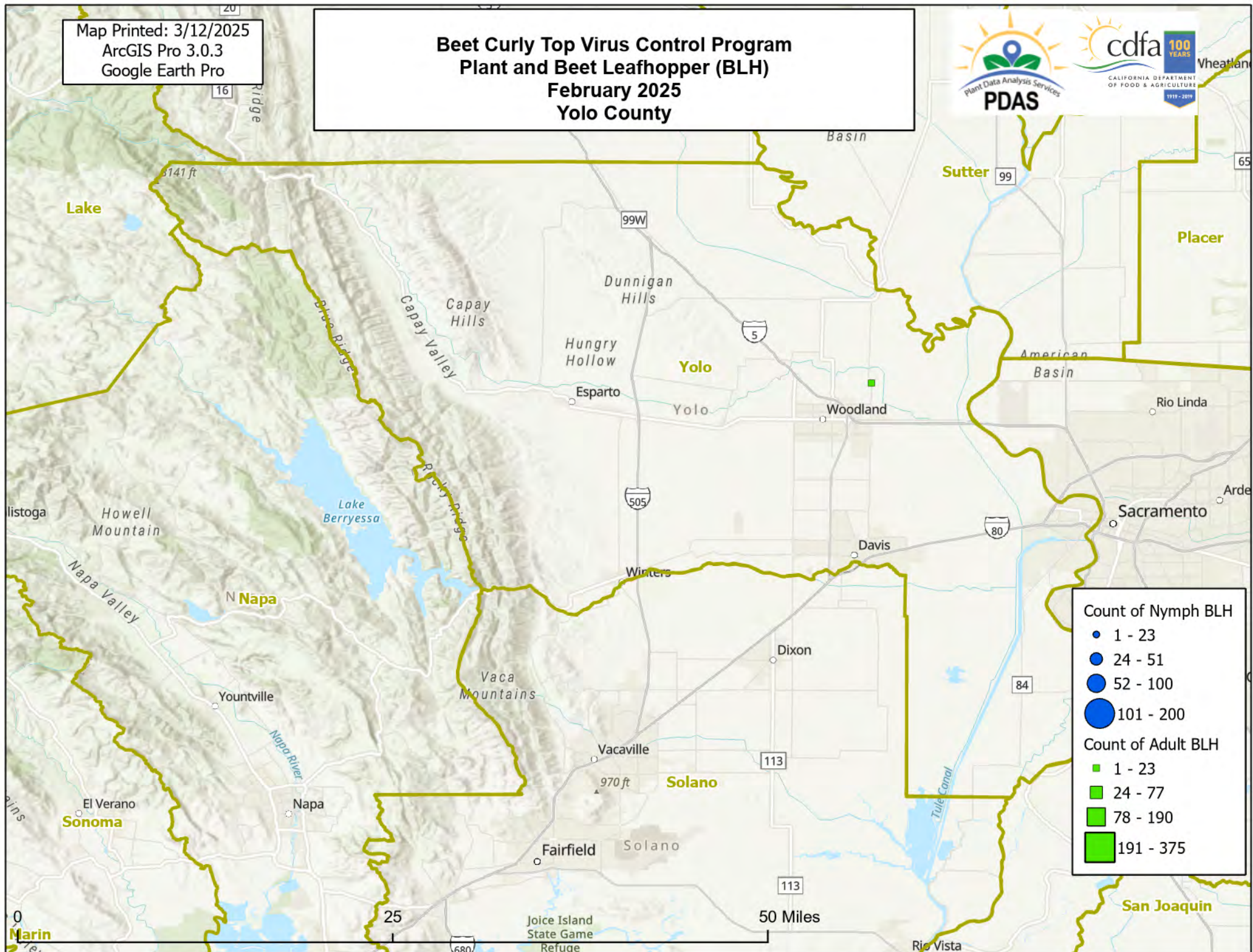


149



Map Printed: 3/12/2025
ArcGIS Pro 3.0.3
Google Earth Pro

Beet Curly Top Virus Control Program Plant and Beet Leafhopper (BLH) February 2025 Yolo County



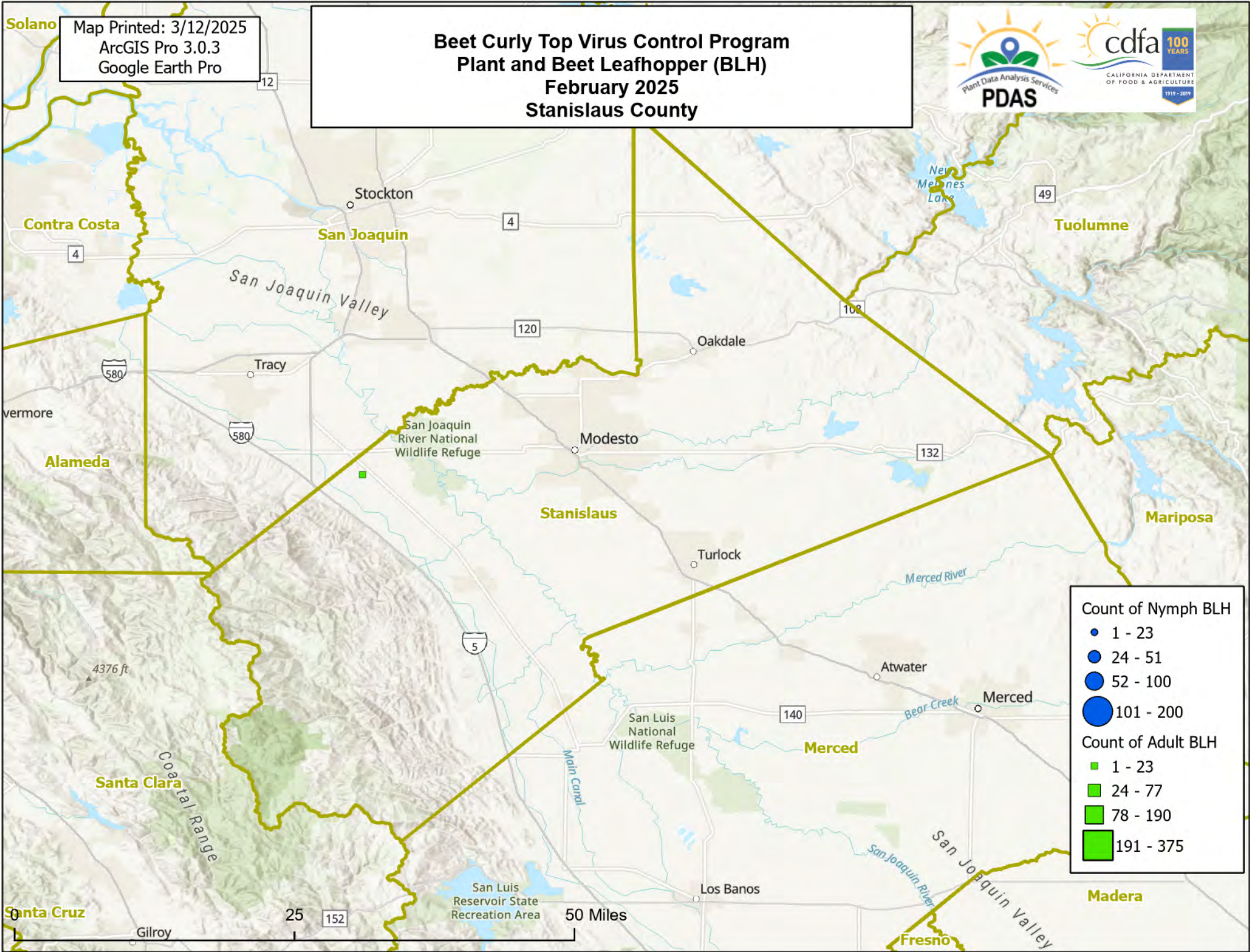
Count of Nymph BLH

- 1 - 23
- 24 - 51
- 52 - 100
- 101 - 200

Count of Adult BLH

- 1 - 23
- 24 - 77
- 78 - 190
- 191 - 375

**Beet Curly Top Virus Control Program
Plant and Beet Leafhopper (BLH)
February 2025
Stanislaus County**



Map Printed: 3/12/2025
ArcGIS Pro 3.0.3
Google Earth Pro

Beet Curly Top Virus Control Program Plant and Beet Leafhopper (BLH) February 2025 Sacramento County

