

Beet Curly Top Virus Control Program

Monthly Report

California Department of Food and Agriculture
Plant Health and Pest Prevention Services
Integrated Pest Control Branch
2895 N. Larkin Ave, Suite A
Fresno, CA 93727
Phone: (559) 294-2031
Fax: (559) 294-2037



December 2025

Program Update

- In December, Beet Curly Top Virus Control Program (BCTVCP) personnel conducted beetle leafhopper (BLH) and vegetation surveys in the foothills on the westside of the San Joaquin and Sacramento Valleys in Butte, Colusa, Fresno, Glenn, Kern, Kings, Madera, Merced, Solano, Sutter, and Yolo counties.
- BLH counts remained low in all survey areas statewide (0-1 BLH per sweep set). Rain and storm events in December limited the Program's ability to conduct surveys in traditional beetle leafhopper (BLH) overwintering areas due to muddy and washed-out access roads.
- Program staff began surveying in the hillsides. Staff continue to survey roadsides and fallow fields in the 3-5 mile buffer zone from the hillsides.
- Commonly observed host vegetation is Russian Thistle, Mallow, Filaree, Mustards, Plantago, London Rocket, Shepherd's Purse, and Horehound.
- The Program would like to remind growers and PCA's that any fallow fields or weedy areas adjacent to susceptible crops should be inspected for BLH prior to disking or mowing. The Program can be available for BLH surveys and, if needed, control of fallow fields and/or roadsides where BLH counts reach the threshold triggers for control.
- Please visit the Program's webpage to view Program reports and alerts. https://www.cdfa.ca.gov/plant/ipc/curlytopvirus/ctv_hp.htm
- The BCTVCP has deployed a Beet Leafhopper Sighting Report that industry can use to report BLH or CTV incidence in the field. This report is available using the following web browser link: <https://arcg.is/O9LyK> or by downloading the ArcGIS Survey123 app from the Google Play Store or Apple App Store and using the QR code below. A user guide for the BLH Sighting Report is available on the BCTVCP webpage.



- For program inquiries or questions regarding this report, please contact Kendra Tapia at kendra.tapia@cdfa.ca.gov or (916) 823-1169.

2025 Beet Curly Top Virus 3-Year Average BLH Counts

December County Average BLH Counts				
<u>County</u>	<u>2022</u>	<u>2023</u>	<u>2024</u>	<u>2025</u>
Fresno	-	1.6	0.3	0.06
Kings	-	1.5	-	0.6
Kern	-	-	-	0.02
Madera	-	-	0.02	0.01
Merced	-	1.4	0.6	0
Butte	-	0.01	0.05	0.1
Colusa	-	-	0.2	0.1
Glenn	-	0.2	0.08	0.1
Sacramento	-	0.1	-	0
San Joaquin	-	0.2	0.6	0
Stanislaus	-	1.0	-	-
Sutter	-	0.3	0.3	0.05
Solano	-	0.04	0.1	0
Yolo	-	0.5	0.2	0.8

2025 Beet Curly Top Virus Sample Results

January 2025- BCTV Sample Results by County														
	Fresno	Kings	Kern	Merced	Madera	Glenn	Yolo	Colusa	Sutter	Butte	Solano	Sacramento	Stanislaus	San Joaquin
Positive BLH	-	1	-	-	-	-	-	-	-	-	-	-	-	-
Negative BLH	2	2	-	-	-	-	-	-	-	-	-	-	-	-
Positive Host Plant	1	-	-	-	-	-	-	-	-	-	-	-	-	-
Negative Host Plant	5	4	-	-	-	3	7	3	4	4	3	2	-	7

February 2025- BCTV Sample Results by County														
	Fresno	Kings	Kern	Merced	Madera	Glenn	Yolo	Colusa	Sutter	Butte	Solano	Sacramento	Stanislaus	San Joaquin
Positive BLH	6	3	1	-	-	-	-	-	-	-	-	-	-	-
Negative BLH	7	2	5	-	-	-	-	-	-	-	-	-	-	-
														-
Positive Host Plant	-	-	-	-	-	-	1	-	-	-	-	-	-	-
Negative Host Plant	72	21	27	12	10	10	6	4	6	2	10	2	9	7

[illegible]

April 2025- BCTV Sample Results by County														
	Fresno	Kings	Kern	Merced	Madera	Glenn	Yolo	Colusa	Sutter	Butte	Solano	Sacramento	Stanislaus	San Joaquin
Positive BLH	7	8	8	-	-	-	-	-	-	-	-	-	-	-
Negative BLH	2	1	-	-	-	-	-	-	-	-	-	-	1	-
Positive Host Plant	3	3	16	-	-	-	-	-	-	-	-	-	-	-
Negative Host Plant	27	14	81	2	-	7	6	6	6	5	6	4	7	8
Positive Tomato Plants	-	-	-	-	-	-	-	-	-	-	-	-	-	-
Negative Tomato Plants	-	-	-	-	-	-	2	3	5	-	2	-	-	-

May 2025- BCTV Sample Results by County																	
	Fresno	Kings	Kern	Merced	Madera	Glenn	Yolo	Colusa	Sutter	Butte	Solano	Sacramento	Stanislaus	San Joaquin	Imperial	Monterey	Riverside
Positive BLH	9	-	6	1	-	-	-	-	-	-	-	-	-	-	1	1	-
Negative BLH	-	-	-	-	-	-	-	-	-	-	-	-	1	-	-	-	2
Positive Host Plant	5	-	7	-	-	-	-	-	-	-	-	-	-	-	-	-	-
Negative Host Plant	9	-	24	1	1	2	3	2	5	2	4	-	3	6	5	2	4
Positive Tomato Plants	-	-	34	-	-	-	2	-	-	-	-	-	-	1	-	-	-
Negative Tomato Plants	14	3	23	-	-	3	14	7	14	-	6	-	8	2	1	-	-

June 2025- BCTV Sample Results by County															
	Fresno	Kings	Kern	Merced	Madera	Glenn	Yolo	Colusa	Sutter	Butte	Solano	Sacramento	Stanislaus	San Joaquin	Tulare
Positive BLH	-	-	5	-	1	-	-	-	-	-	-	-	1	-	-
Negative BLH	-	-	-	-	-	-	-	-	-	-	-	-	-	-	-
Positive Host Plant	4	-	11	-	1	-	-	-	-	-	-	-	1	-	-
Negative Host Plant	5	-	29	1	1	3	3	3	2	-	3	-	1	1	-
Positive Tomato Plants	40	13	38	15	1	-	-	1	-	-	-	-	10	9	-
Negative Tomato Plants	22	9	19	11	3		29	12	9	-	17	-	5	4	1

July 2025- BCTV Sample Results by County															
	Fresno	Kings	Kern	Merced	Madera	Glenn	Yolo	Colusa	Sutter	Butte	Solano	Sacramento	Stanislaus	San Joaquin	Tehama
Positive BLH	4	-	3	-	5	-	-	-	-	-	-	-	-	-	-
Negative BLH	2	-	-	-	-	-	-	-	-	-	-	-	-	-	-
Positive Host Plant	17	1	25	-	5	-	-	1	-	1	-	-	1	-	-
Negative Host Plant	13	6	23	6	9	1	5	-	2	2	-	-	2	1	2
Positive Tomato Plants	13	6	5	14	-	-	1	4	-	-	1	1	3	1	-
Negative Tomato Plants	3	1	3	5	-	2	16	12	3	-	4	1	-	9	3

August 2025- BCTV Sample Results by County															
	Fresno	Kings	Kern	Merced	Madera	Glenn	Yolo	Colusa	Sutter	Butte	Solano	Sacramento	Stanislaus	San Joaquin	Tehama
Positive BLH	-	-	-	1	2	-	-	-	-	-	-	-	1	-	-
Negative BLH	-	-	1	-	-	-	-	-	-	-	-	-	-	-	-
Positive Host Plant	3	-	19	2	1	-	-	-	-	-	-	-	8	-	-
Negative Host Plant	6	2	32	4	2	8	1	7	5	3	-	-	3	1	-
Positive Tomato Plants	2	-	-	-	-	-	-	-	1	-	-	-	-	4	-
Negative Tomato Plants	-	4	-	-	-	-	5	5	8	-	-	-	-	12	-

September 2025- BCTV Sample Results by County															
	Fresno	Kings	Kern	Merced	Madera	Glenn	Yolo	Colusa	Sutter	Butte	Solano	Sacramento	Stanislaus	San Joaquin	Tehama
Positive BLH	-	-	1	3	5	-	-	-	-	-	-	-	3	-	-
Negative BLH	-	-	-	1	-	-	-	-	-	-	-	-	-	-	-
Positive Host Plant	-	-	20	1	5	-	-	-	-	-	-	-	8	-	-
Negative Host Plant	5	-	39	1	1	1	6	15	8	-	11	4	4	6	-
Positive Tomato Plants	-	-	-	-	-	-	-	-	-	-	-	-	-	-	-
Negative Tomato Plants	1	-	-	-	-	-	3	-	2	-	-	1	-	4	-

October 2025- BCTV Sample Results by County

[illegible]

November 2025- BCTV Sample Results by County

[illegible]

December 2025- BCTV Sample Results by County															
	Fresno	Kings	Kern	Merced	Madera	Glenn	Yolo	Colusa	Sutter	Butte	Solano	Sacramento	Stanislaus	San Joaquin	Tehama
Positive BLH	-	-	-	-	-	-	-	-	-	-	-	-	-	-	-
Negative BLH	-	-	-	-	-	-	-	-	-	-	-	-	-	-	-
Positive Host Plant	-	-	-	-	-	-	-	-	-	-	-	-	-	-	-
Negative Host Plant	-	-	6	4	5	3	5	2	-	-	-	-	-	4	-
Positive Tomato Plants	-	-	-	-	-	-	-	-	-	-	-	-	-	-	-
Negative Tomato Plants	-	-	-	-	-	-	-	-	-	-	-	-	-	-	-

County Reports

Fresno County

- BLH population surveys were conducted in the overwintering foothills as well as in fallow fields and roadsides within five miles of the foothills.
- Overall counts remained low throughout survey areas, averaging 0-1 BLH per sweep set.
- Host plant vegetation surveyed included Filaree and Plantago.
- A map identifying the location of the BLH counts is provided at the end of the report.

Fresno County BLH Survey		
<u>Location</u>	<u>Date</u>	<u>Average # of BLH per sweep set</u>
Fresno Zone 05	12/1-12/31	0.1
Fresno Zone 07	12/1-12/31	0
Fresno Zone 09	12/1-12/31	0
Field 12	12/1-12/31	0.3
Field 4	12/1-12/31	0.02
Field 10	12/1-12/31	0.02

Kern County

- BLH population surveys were conducted in the overwintering foothills as well as in fallow fields and roadsides within five miles of the foothills.
- Overall counts remained low throughout survey areas, averaging 0-1 BLH per sweep set.
- Host plant vegetation surveyed included Filaree and Plantago.
- A map identifying the location of the BLH counts is provided at the end of the report.

Kern County BLH Survey		
<u>Location</u>	<u>Date</u>	<u>Average # of BLH per sweep set</u>
Kern Zone 04	12/1-12/31	0.01
Field 37	12/1-12/31	0.03
Field 47	12/1-12/31	0.03
Field 43	12/1-12/31	0.08
Field 48	12/1-12/31	0.02

Kings County

- BLH population surveys were conducted in the overwintering foothills as well as in fallow fields and roadsides within five miles of the foothills.
- Overall counts remained low throughout survey areas, averaging 0-1 BLH per sweep set.
- Host plant vegetation surveyed included Mallow and Filaree.
- A map identifying the location of the BLH counts is provided at the end of the report.

Kings County BLH Survey		
<u>Location</u>	<u>Date</u>	<u>Average # of BLH per sweep set</u>
Kings Zone 02	12/1-12/31	0
Kings Zone 03	12/1-12/31	0.6
Field 26	12/1-12/31	1.6
Field 25	12/1-12/31	0.4

Madera County

- BLH population surveys were conducted in fallow fields and roadsides within five miles of the foothills.
- Overall counts remained low throughout the survey areas, averaging 0-1 BLH per sweep set.
- Host vegetation surveyed included Filaree, Mallow, Mustards, and Russian Thistle.
- A map identifying BLH counts is provided at the end of the report.

Madera County BLH Survey		
<u>Location</u>	<u>Date</u>	<u>Average # of BLH per sweep set</u>
Madera Zone 01	12/1-12/31	0.01

Merced County

- BLH population surveys were conducted in fallow fields and roadsides within five miles of the foothills.
- No BLH was observed during survey in Merced County.
- Host vegetation surveyed included Mustards, Filaree, Mallow, London Rocket, Shepherd's Purse, Bassia, and Russian Thistle.

Colusa County

- BLH population surveys were conducted in fallow fields and roadsides within five miles of the foothills.
- Overall counts remained low throughout the survey areas, averaging 0-1 BLH per sweep set.
- Host vegetation surveyed included Mallow, Mustards, Filaree, Lamb's Quarter, and Russian Thistle.
- A map identifying BLH counts is provided at the end of the report.

Colusa County BLH Survey		
<u>Location</u>	<u>Date</u>	<u>Average # of BLH per sweep set</u>
Colusa Zone 01	12/1-12/31	0.1

Yolo County

- BLH population surveys were conducted in fallow fields and roadsides within five miles of the foothills.

- Overall counts remained very low throughout the survey areas, averaging 0-1 BLH per sweep set.
- Host vegetation surveyed included Mallow and Mustards.
- A map identifying BLH counts is provided at the end of the report.

Yolo County BLH Survey		
<u>Location</u>	<u>Date</u>	<u>Average # of BLH per sweep set</u>
Yolo Zone 01	12/1-12/31	0.8

Sutter County

- BLH population surveys were conducted in fallow fields and roadsides within five miles of the foothills.
- Overall counts remained very low throughout the survey areas, averaging 0-1 BLH per sweep set.
- Host vegetation surveyed included Mallow, Mustards, Russian Thistle, and Filaree.
- A map identifying BLH counts is provided at the end of the report.

Sutter County BLH Survey		
<u>Location</u>	<u>Date</u>	<u>Average # of BLH per sweep set</u>
Sutter Zone 01	12/1-12/31	0.05

Glenn County

- BLH population surveys were conducted in fallow fields and roadsides within five miles of the foothills.
- Overall counts remained very low throughout the survey areas, averaging 0-1 BLH per sweep set.
- Host vegetation surveyed included Russian Thistle, Filaree, and Mallow.
- A map identifying BLH counts is provided at the end of the report.

Glenn County BLH Survey		
<u>Location</u>	<u>Date</u>	<u>Average # of BLH per sweep set</u>
Glenn Zone 01	12/1-12/31	0.1

Butte County

- BLH population surveys were conducted in fallow fields and roadsides within five miles of the foothills.
- Overall counts remained very low throughout the survey areas, averaging 0-1 BLH per sweep set.
- Host vegetation surveyed included Russian Plantago and Mallow.
- A map identifying BLH counts is provided at the end of the report.

Butte County BLH Survey		
<u>Location</u>	<u>Date</u>	<u>Average # of BLH per sweep set</u>
Butte Zone 01	12/1-12/31	0.1

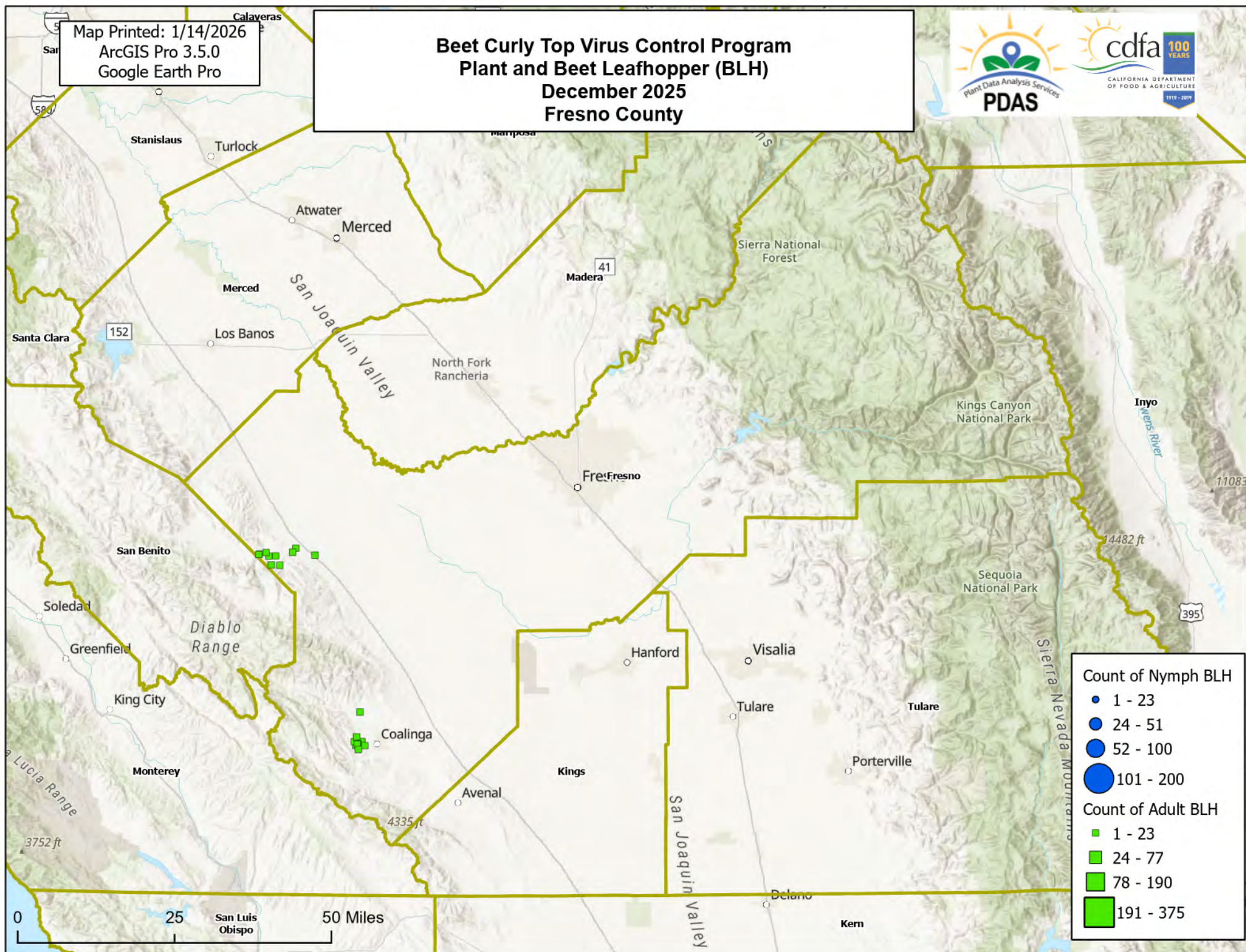
Solano County

- BLH population surveys were conducted in fallow fields and roadsides within five miles of the foothills.
- No BLH were observed during survey in Solano County.
- Host vegetation surveyed included Mallow.

To subscribe to the BCTV monthly report, updates, and alerts, please use the link below:
www.cdfa.ca.gov/subscriptions/

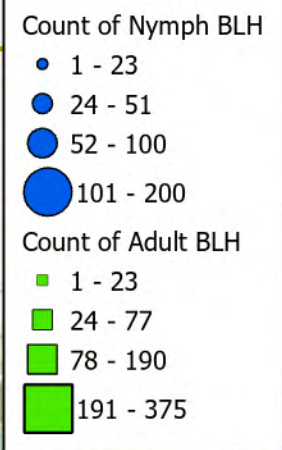
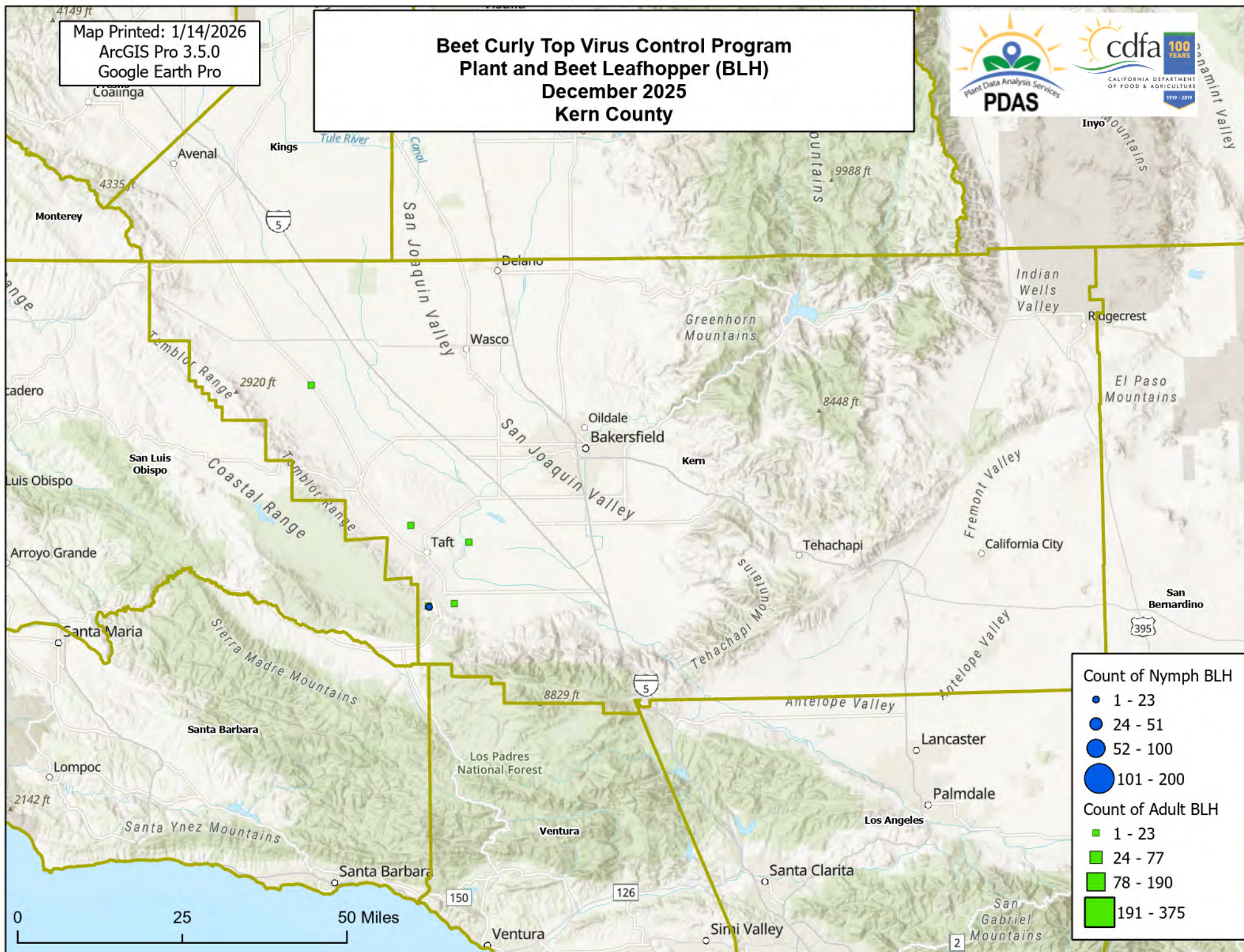
Map Printed: 1/14/2026
ArcGIS Pro 3.5.0
Google Earth Pro

Beet Curly Top Virus Control Program Plant and Beet Leafhopper (BLH) December 2025 Fresno County



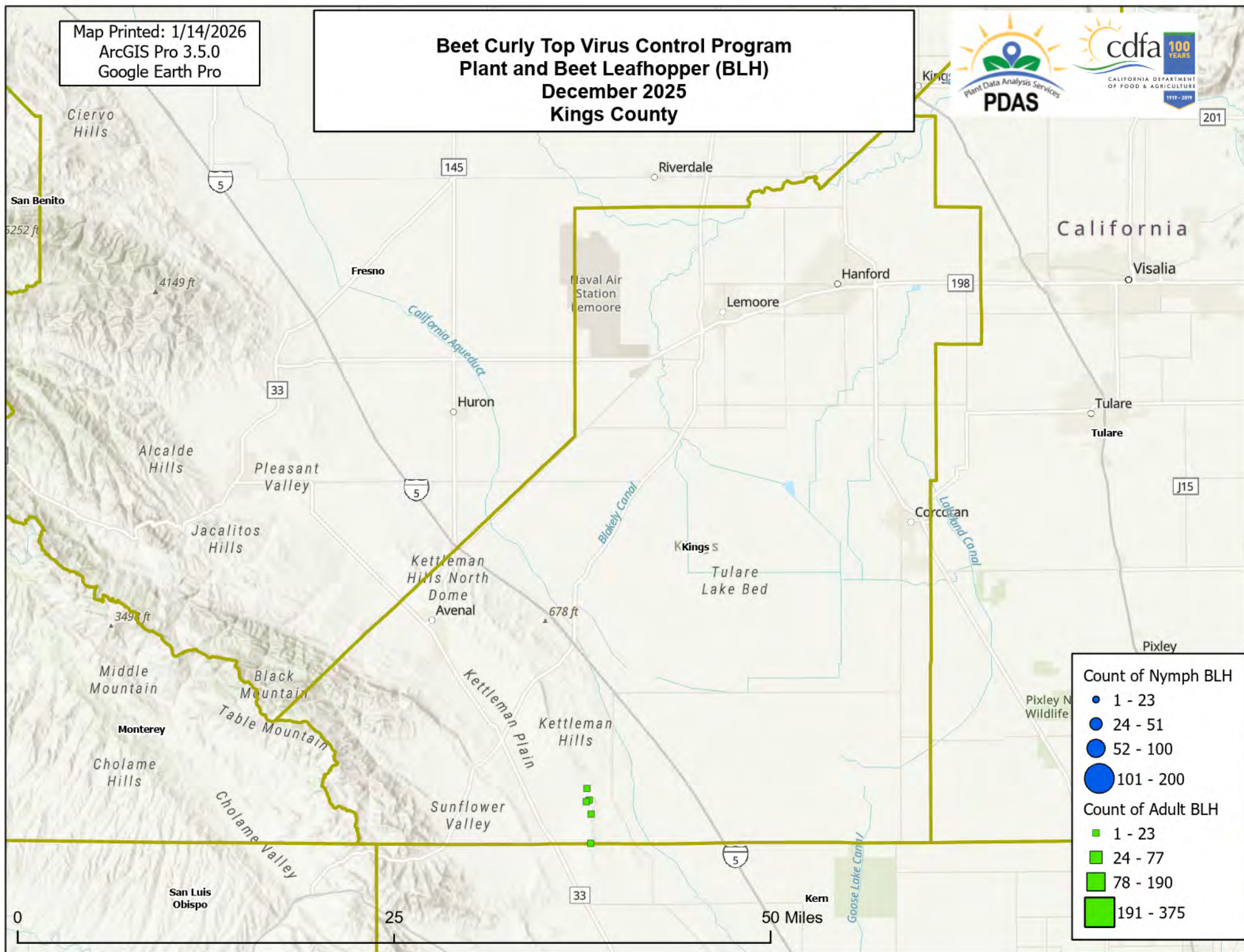
Map Printed: 1/14/2026
ArcGIS Pro 3.5.0
Google Earth Pro

Beet Curly Top Virus Control Program Plant and Beet Leafhopper (BLH) December 2025 Kern County



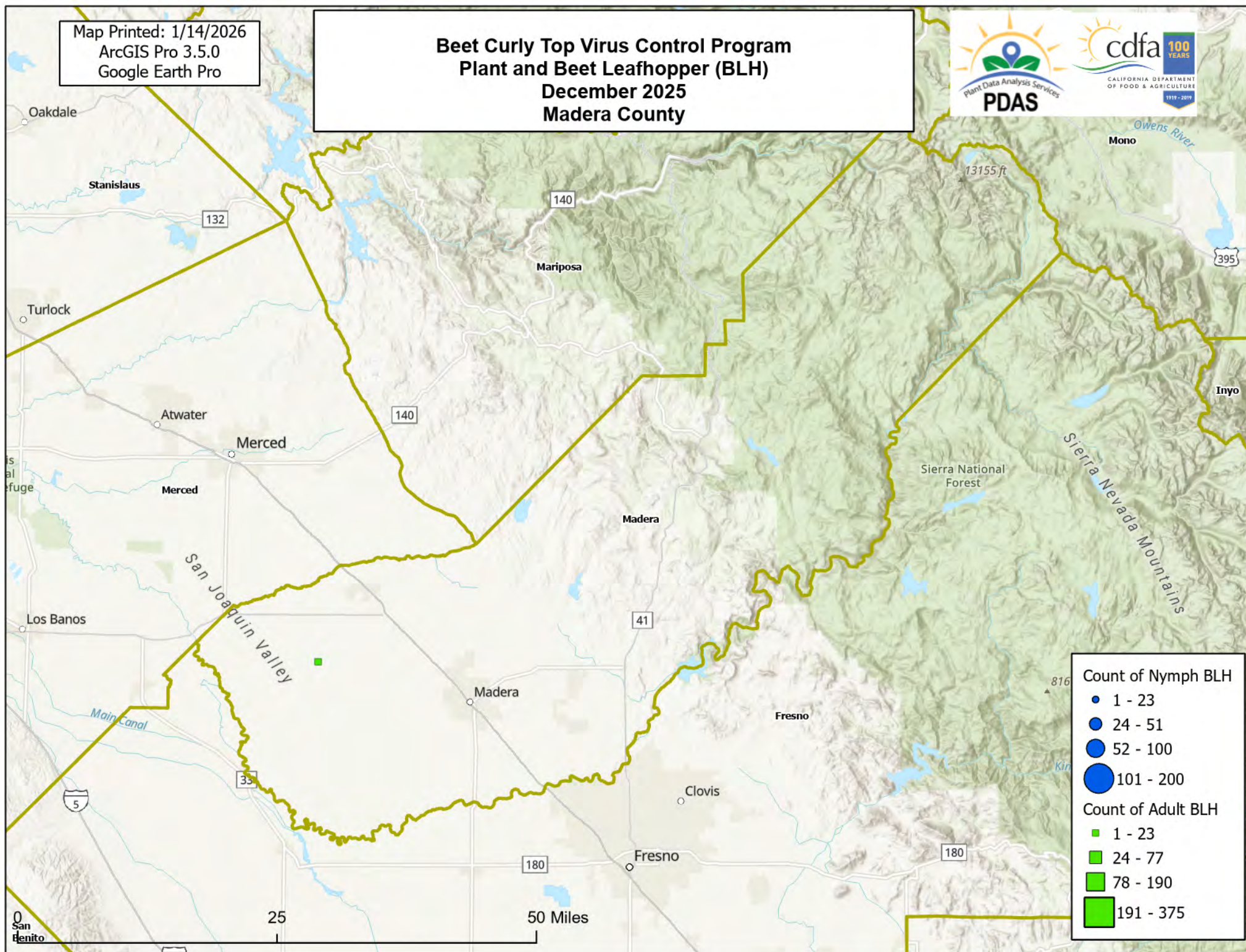
Map Printed: 1/14/2026
ArcGIS Pro 3.5.0
Google Earth Pro

Beet Curly Top Virus Control Program Plant and Beet Leafhopper (BLH) December 2025 Kings County



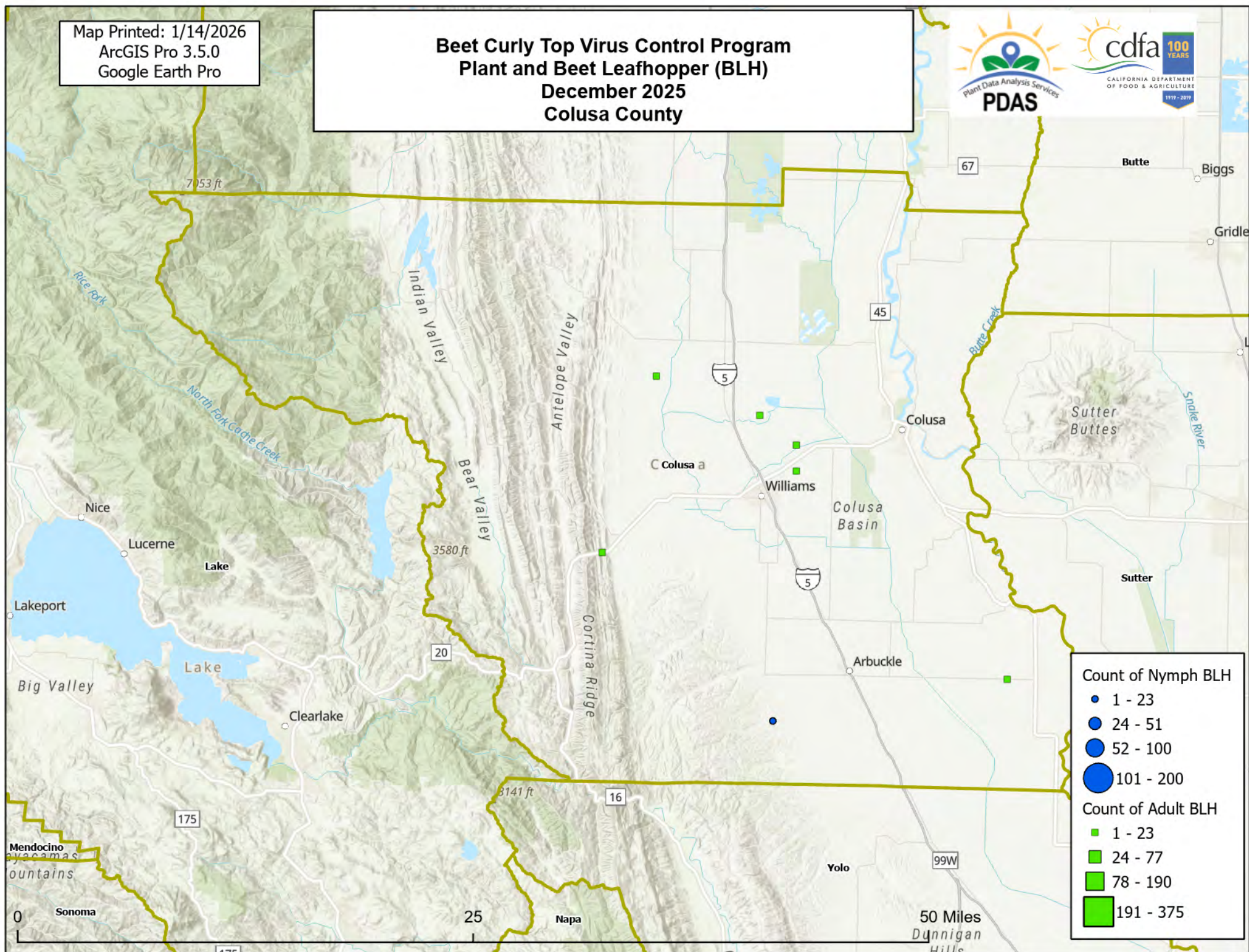
Map Printed: 1/14/2026
ArcGIS Pro 3.5.0
Google Earth Pro

Beet Curly Top Virus Control Program Plant and Beet Leafhopper (BLH) December 2025 Madera County



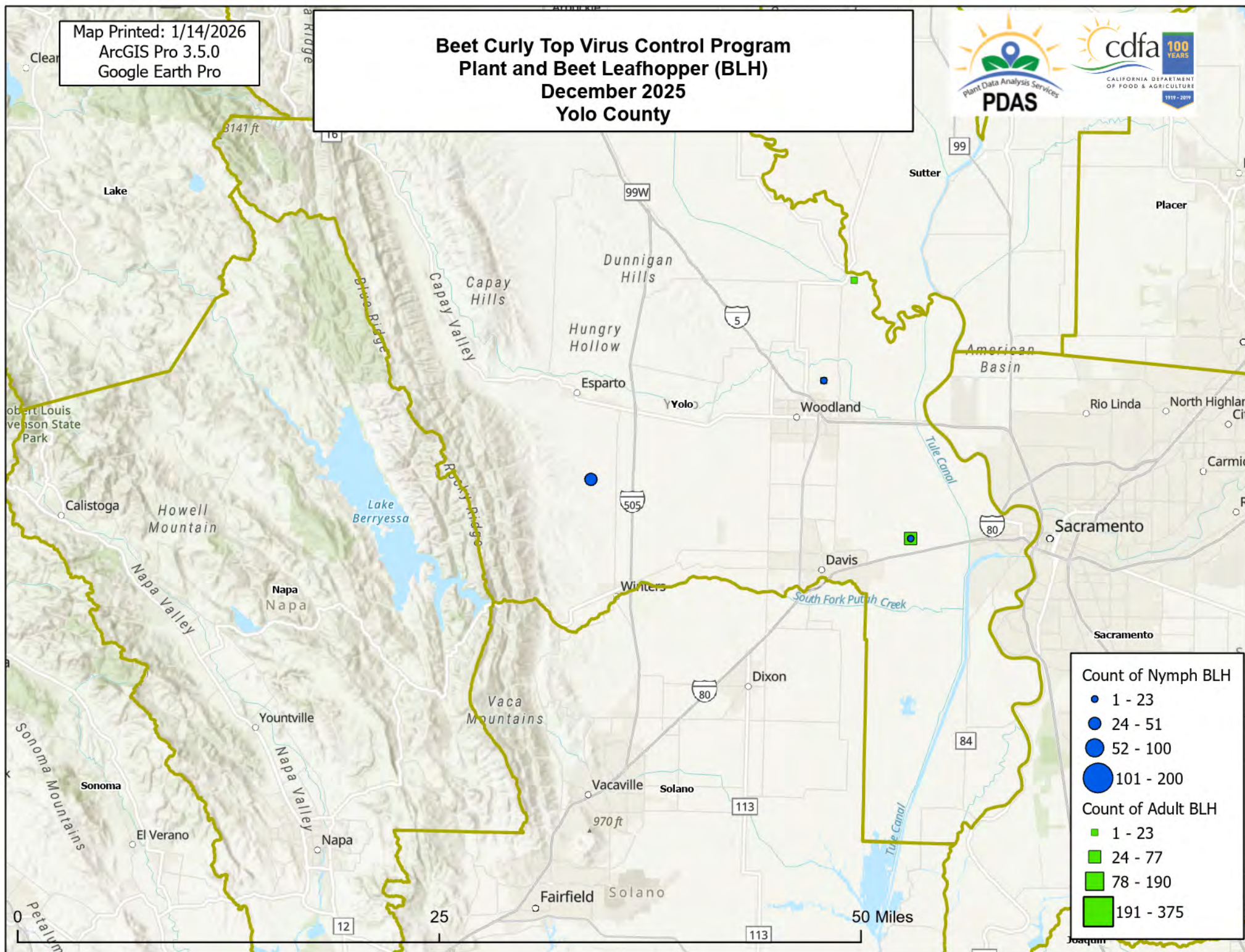
Map Printed: 1/14/2026
ArcGIS Pro 3.5.0
Google Earth Pro

Beet Curly Top Virus Control Program Plant and Beet Leafhopper (BLH) December 2025 Colusa County



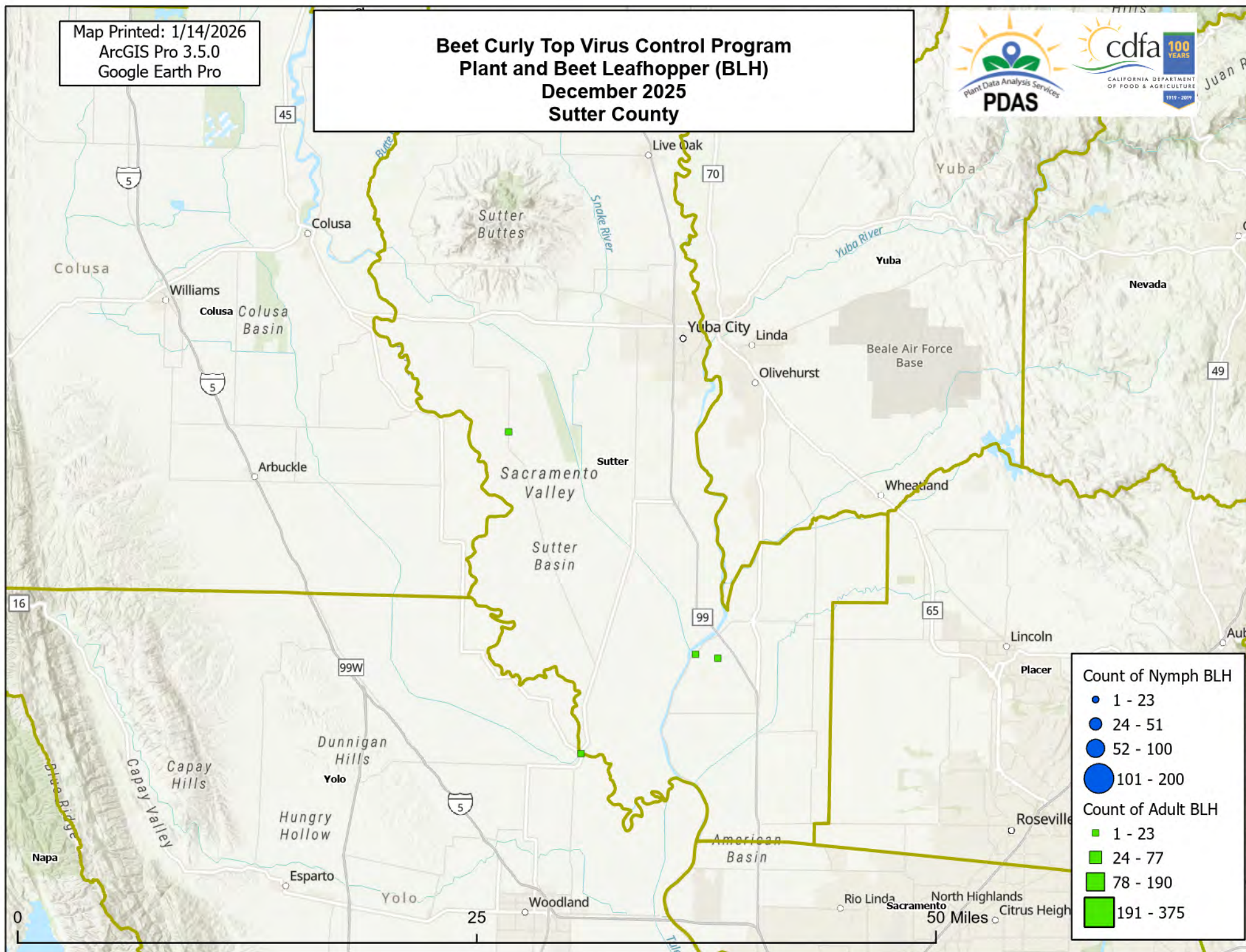
Map Printed: 1/14/2026
ArcGIS Pro 3.5.0
Google Earth Pro

Beet Curly Top Virus Control Program Plant and Beet Leafhopper (BLH) December 2025 Yolo County



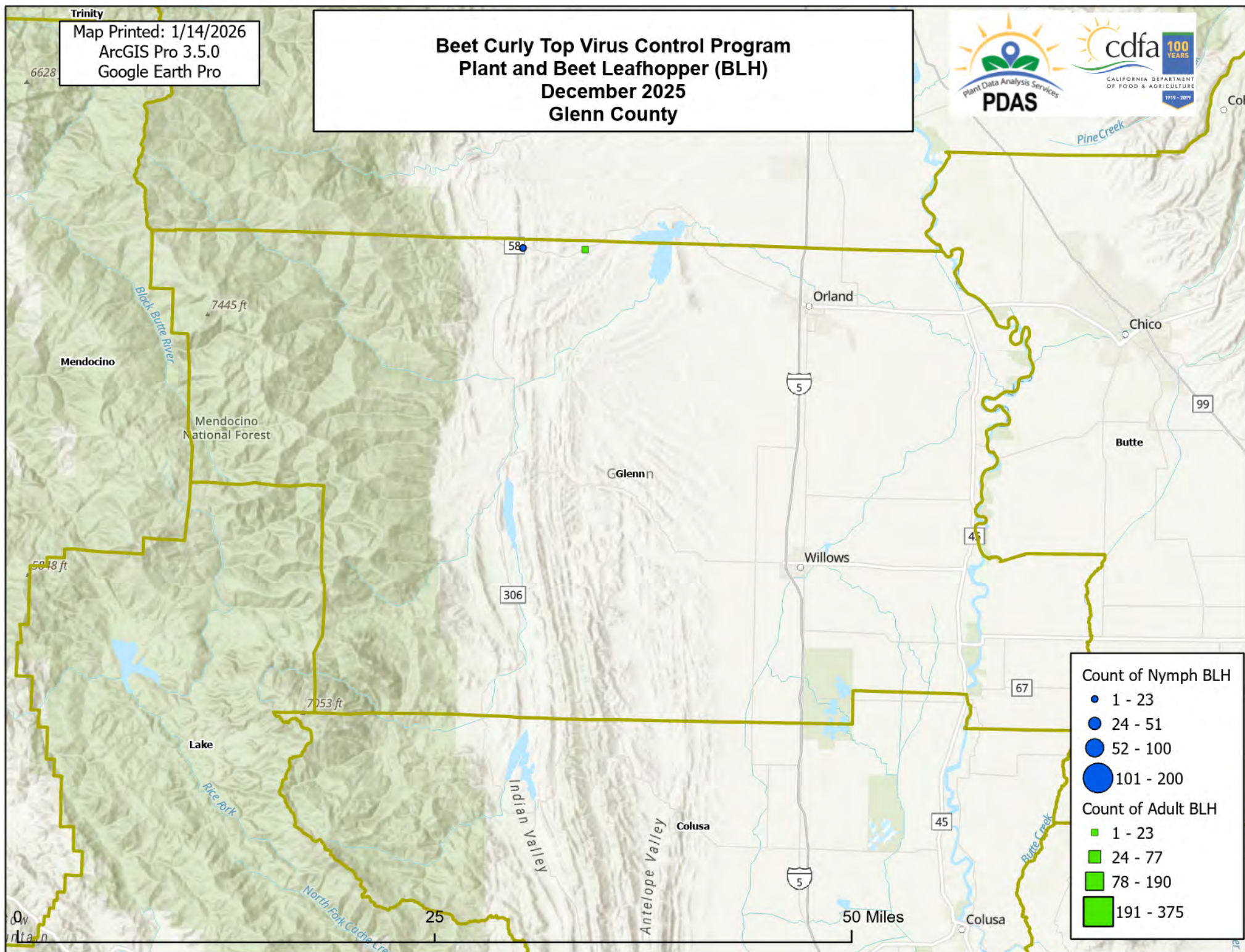
Map Printed: 1/14/2026
ArcGIS Pro 3.5.0
Google Earth Pro

Beet Curly Top Virus Control Program Plant and Beet Leafhopper (BLH) December 2025 Sutter County



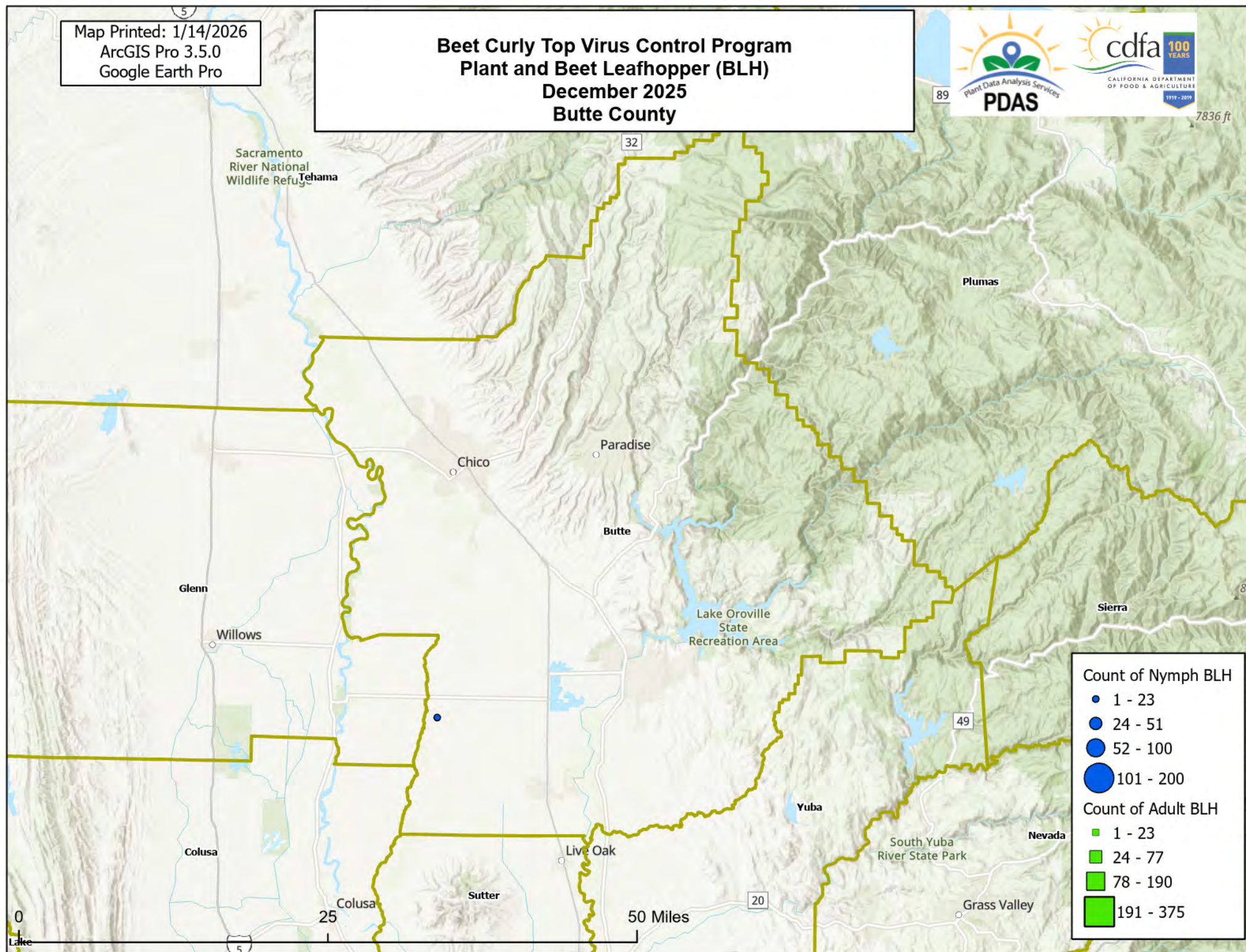
Map Printed: 1/14/2026
ArcGIS Pro 3.5.0
Google Earth Pro

Beet Curly Top Virus Control Program Plant and Beet Leafhopper (BLH) December 2025 Glenn County

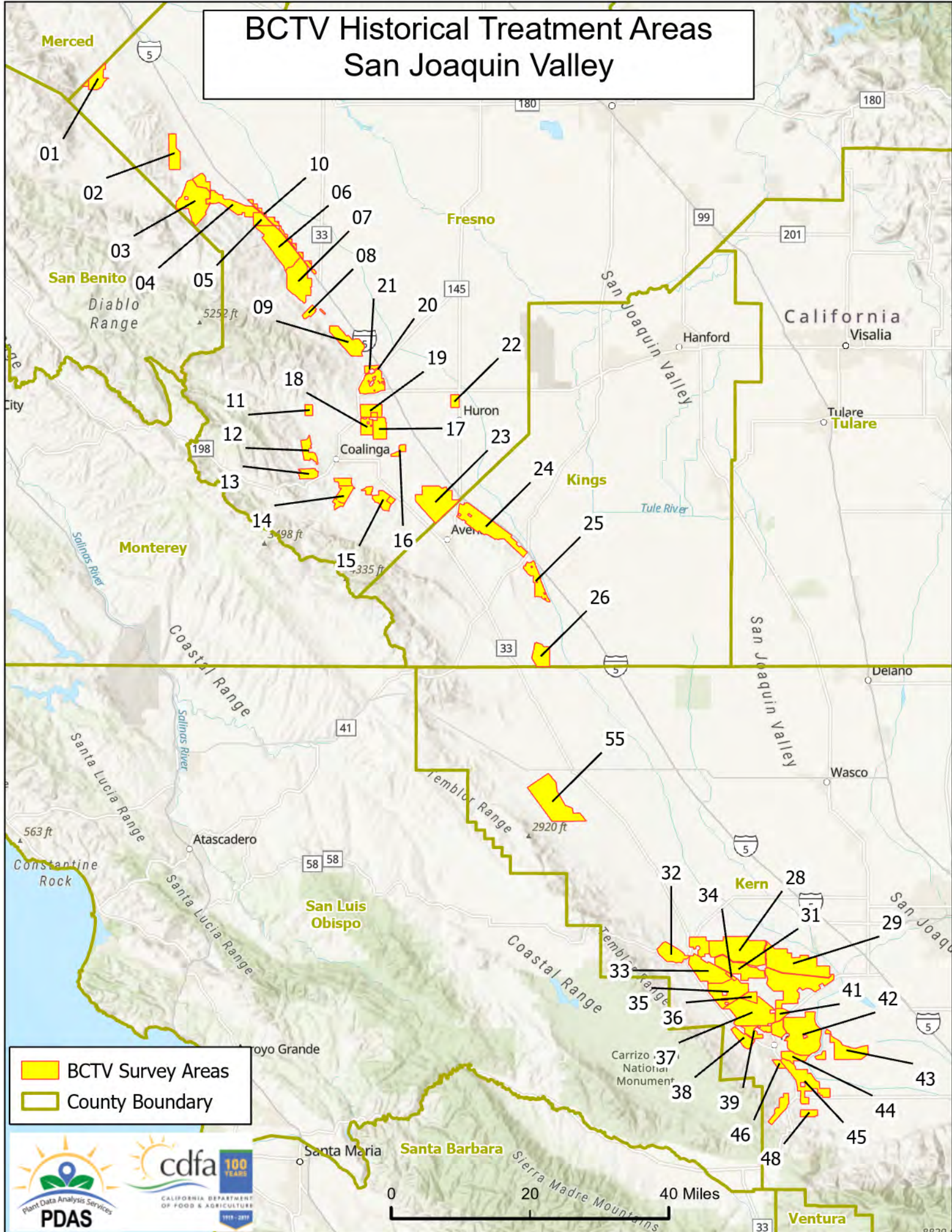


Map Printed: 1/14/2026
ArcGIS Pro 3.5.0
Google Earth Pro

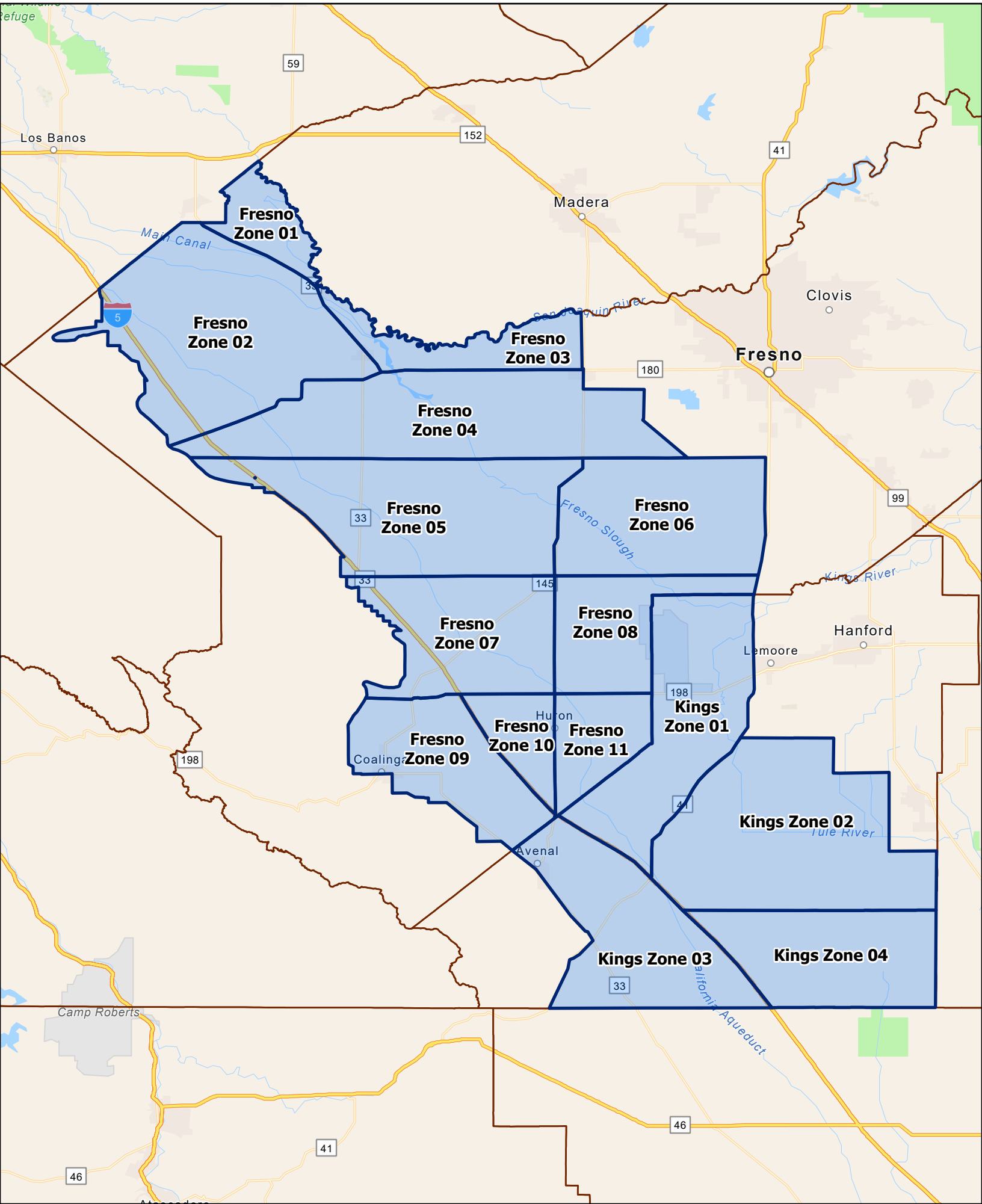
Beet Curly Top Virus Control Program Plant and Beet Leafhopper (BLH) December 2025 Butte County



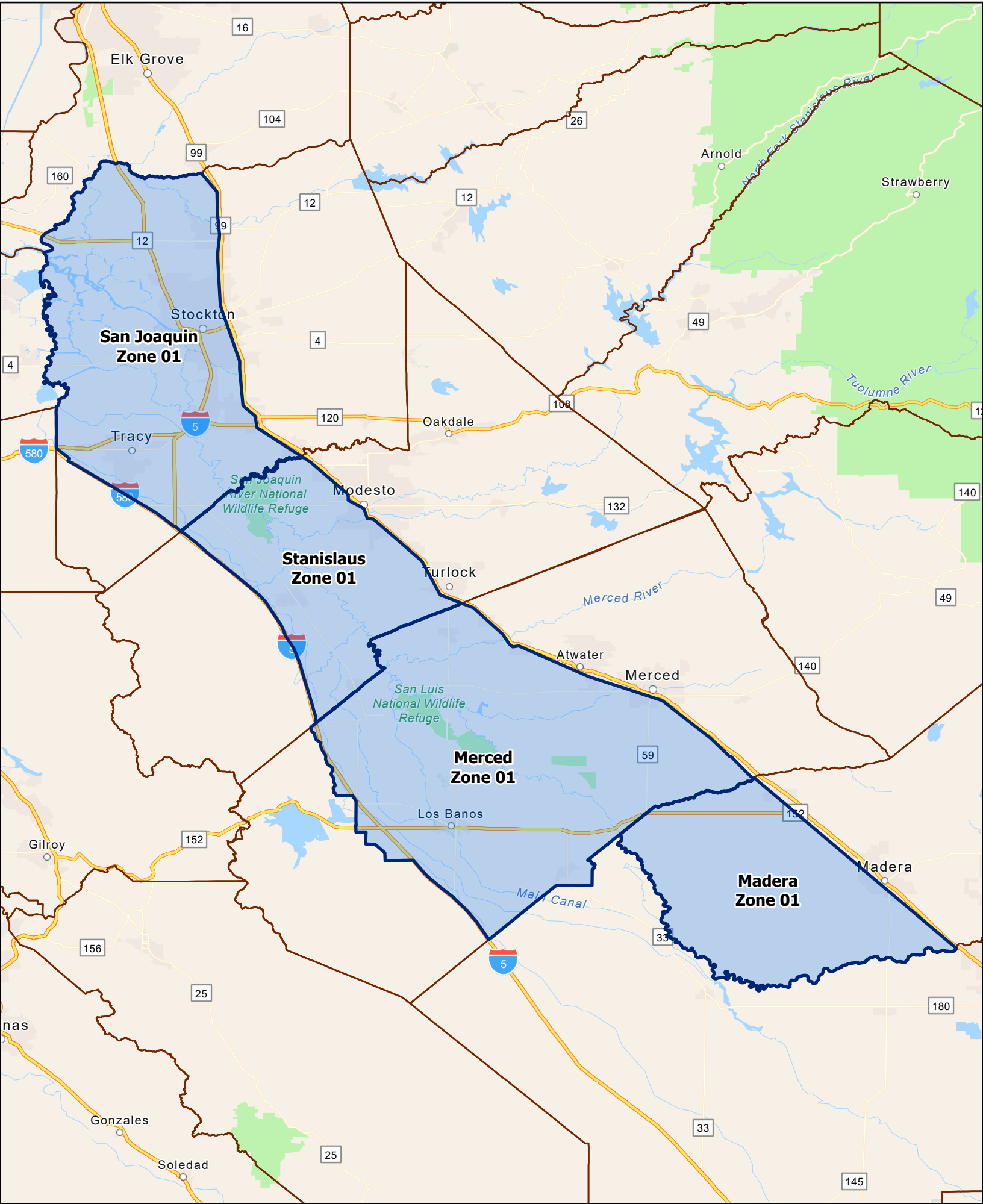
BCTV Historical Treatment Areas San Joaquin Valley



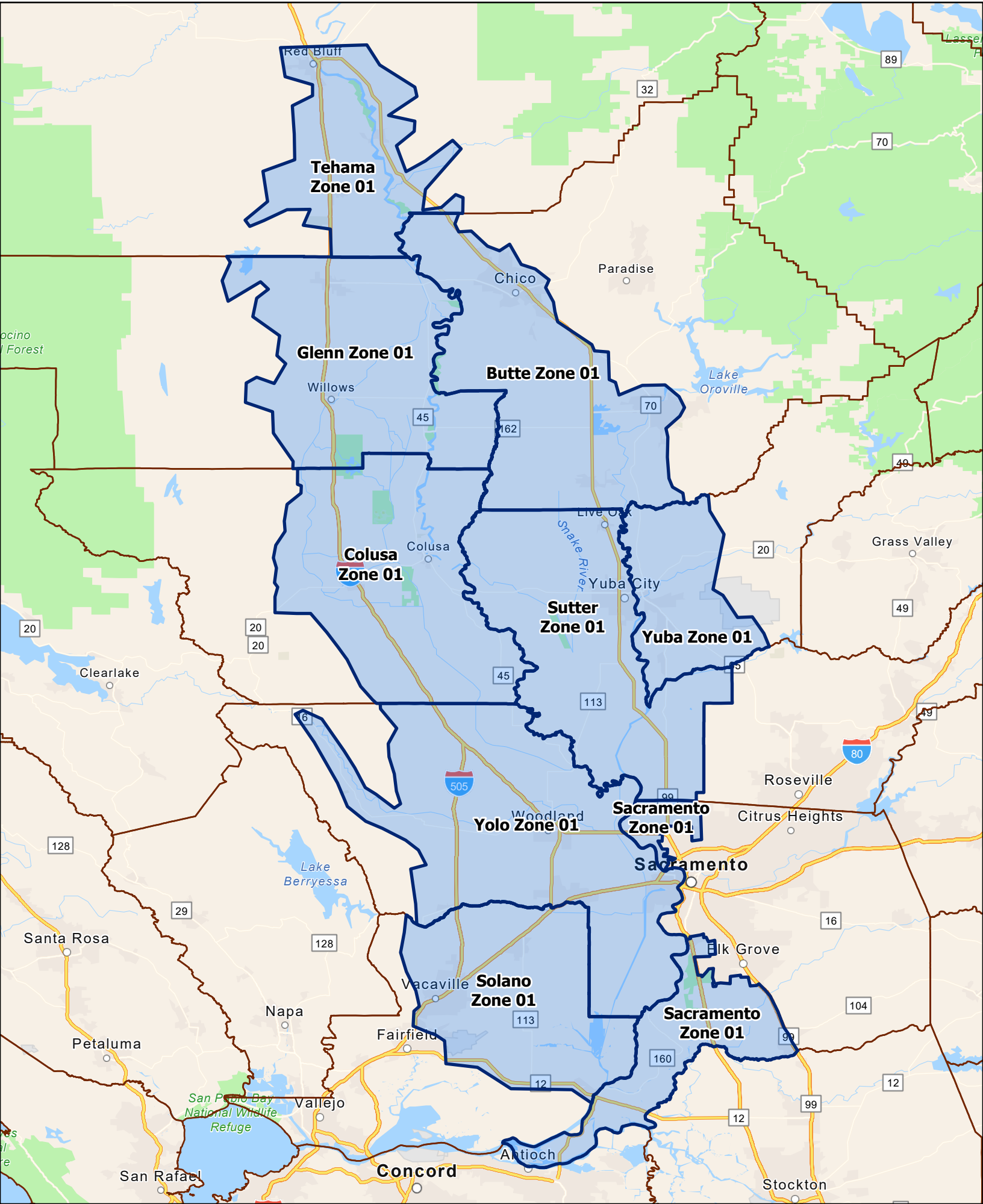
CTV Control Program Survey Zones Fresno & Kings Counties



CTV Control Program Survey Zones
Madera, Merced, Stanislaus & San Joaquin Counties



CTV Control Program Survey Zones Sacramento Valley



CTV Control Program Survey Zones Kern County

