

Beet Curly Top Virus Control Program

Monthly Report

California Department of Food and Agriculture
Plant Health and Pest Prevention Services
Integrated Pest Control Branch
2895 N. Larkin Ave, Suite A
Fresno, CA 93727
Phone: (559) 294-2031
Fax: (559) 294-2037



August 2025

Program Update

- In August, Beet Curly Top Virus Control Program (BCTVCP) personnel conducted beetle leafhopper (BLH) and vegetation surveys in the foothills on the westside of the San Joaquin and Sacramento Valleys in Fresno, Kern, Kings, Yolo, Sutter, Glenn, Merced, Stanislaus, Butte, Sacramento, San Joaquin, Madera, and Colusa counties.
- BLH counts remained low in all survey areas statewide (0-1 BLH per sweep set). There has been a few hot spots in Madera, Merced, and Glenn County but remain under 2 BLH per sweep.
- Commonly observed host vegetation is Russian Thistle, Bassia, Mallow, Salt Bush, Lamb's Quarter, Bindweed, Pig Weed, Pepper Grass, Purslane, and Kochia. Host vegetation will be continuously monitored for BLH populations.
- Fallow fields and roadsides are being mapped for further monitoring and potential treatment for Fall.
- Commodity surveys are wrapping up in the Sacramento Valley with minimal damage remaining under 0-2%. There has been some late plantings of Melon in Fresno County that are being surveyed with no damage observed.
- The Program would like to remind growers and PCA's that any fallow fields or weedy areas adjacent to susceptible crops should be inspected for BLH prior to disking or mowing. The Program can be available for BLH surveys and, if needed, control of fallow fields and/or roadsides where BLH counts reach the control thresholds.
- Please visit the Program's webpage to view Program reports and alerts. https://www.cdffa.ca.gov/plant/ipc/curlytopvirus/ctv_hp.htm
- The BCTVCP has deployed a Beet Leafhopper Sighting Report that industry can use to report BLH or CTV incidence in the field. This report is available using the following web browser link: <https://arcg.is/O9LyK> or by downloading the ArcGIS Survey123 app from the Google Play Store or Apple App Store and using the QR code below. A user guide for the BLH Sighting Report is available on the BCTVCP webpage.



- For program inquiries or questions regarding this report, please contact Kendra Tapia at kendra.tapia@cdfa.ca.gov or (916) 823-1169.

2025 Beet Curly Top Virus 3-Year Average BLH Counts

August County Average BLH Counts				
<u>County</u>	<u>2022</u>	<u>2023</u>	<u>2024</u>	<u>2025</u>
Fresno	2.4	0.8	0.03	0.02
Kings	0.1	0.1	0.04	0.1
Kern	0.1	0.2	0.08	0.04
Madera	-	0.3	0.1	0.2
Merced	0	0.01	0.2	0.1
Butte	-	0.05	-	0.03
Colusa	-	0.03	0.2	0.07
Glenn	-	0.09	0.2	0.1
Sacramento	-	0.09	0.8	-
San Joaquin	-	-	0.4	0.2
Stanislaus	-	0.1	0.2	0.07
Sutter	-	0.1	0.2	0.2
Solano	-	0.04	0.2	-
Yolo	-	0.05	0.3	0.03
Tulare	-	-	-	-
Monterey	-	-	-	-
Tehama	-	-	-	-

April 2025- BCTV Sample Results by County

	Fresno	Kings	Kern	Merced	Madera	Glenn	Yolo	Colusa	Sutter	Butte	Solano	Sacramento	Stanislaus	San Joaquin
Positive BLH	7	8	8	-	-	-	-	-	-	-	-	-	-	-
Negative BLH	2	1	-	-	-	-	-	-	-	-	-	-	1	-
Positive Host Plant	3	3	16	-	-	-	-	-	-	-	-	-	-	-
Negative Host Plant	27	14	81	2	-	7	6	6	6	5	6	4	7	8
Positive Tomato Plants	-	-	-	-	-	-	-	-	-	-	-	-	-	-
Negative Tomato Plants	-	-	-	-	-	-	2	3	5	-	2	-	-	-

May 2025- BCTV Sample Results by County

	Fresno	Kings	Kern	Merced	Madera	Glenn	Yolo	Colusa	Sutter	Butte	Solano	Sacramento	Stanislaus	San Joaquin	Imperial	Monterey	Riverside
Positive BLH	9	-	6	1	-	-	-	-	-	-	-	-	-	-	1	1	-
Negative BLH	-	-	-	-	-	-	-	-	-	-	-	-	1	-	-	-	2
Positive Host Plant	5	-	7	-	-	-	-	-	-	-	-	-	-	-	-	-	-
Negative Host Plant	9	-	24	1	1	2	3	2	5	2	4	-	3	6	5	2	4
Positive Tomato Plants	-	-	34	-	-	-	2	-	-	-	-	-	-	1	-	-	-
Negative Tomato Plants	14	3	23	-	-	3	14	7	14	-	6	-	8	2	1	-	-

June 2025- BCTV Sample Results by County

	Fresno	Kings	Kern	Merced	Madera	Glenn	Yolo	Colusa	Sutter	Butte	Solano	Sacramento	Stanislaus	San Joaquin	Tulare
Positive BLH	-	-	4	-	1	-	-	-	-	-	-	-	1	-	-
Negative BLH	-	-	-	-	-	-	-	-	-	-	-	-	-	-	-
Positive Host Plant	4	-	11	-	1	-	-	-	-	-	-	-	1	-	-
Negative Host Plant	5	-	28	1	1	3	3	2	2	-	3	-	1	1	-
Positive Tomato Plants	39	13	38	15	1	-	-	1	-	-	-	-	10	9	-
Negative Tomato Plants	22	9	19	11	3	-	29	12	8	-	17	-	4	4	1

County Reports

Fresno County

- BLH population surveys were conducted in the overwintering foothills as well as in fallow fields and roadsides within five miles of the foothills.
- Overall counts remained low throughout survey areas, averaging 0-1 BLH per sweep set.
- Host plant vegetation surveyed included Lamb's Quarter, Russian Thistle, Salt Bush, and Bassia.
- A map identifying the location of the BLH counts is provided at the end of the report.

Fresno County BLH Survey		
<u>Location</u>	<u>Date</u>	<u>Average # of BLH per sweep set</u>
Fresno Zone 02	8/1-8/31	0.03
Fresno Zone 04	8/1-8/31	0.01
Fresno Zone 05	8/1-8/31	0.01
Fresno Zone 07	8/1-8/31	0.01
Fresno Zone 08	8/1-8/31	0.3
Fresno Zone 09	8/1-8/31	0.1
Fresno Zone 11	8/1-8/31	0.02

Kern County

- BLH population surveys were conducted in the overwintering foothills as well as in fallow fields and roadsides within five miles of the foothills.
- Overall counts remained low throughout survey areas, averaging 0-1 BLH per sweep set.
- Host plant vegetation surveyed included Russian Thistle, Bassia, Lamb's Quarter, Goosefoot, and Pig Weed.
- A map identifying the location of the BLH counts is provided at the end of the report.

Kern County BLH Survey		
<u>Location</u>	<u>Date</u>	<u>Average # of BLH per sweep set</u>
Kern Zone 01	8/1-8/31	0.02
Kern Zone 02	8/1-8/31	0.03
Kern Zone 04	8/1-8/31	0.02
Kern Zone 05	8/1-8/31	0.04
Kern Zone 09	8/1-8/31	0.2

Kern Zone 10	8/1-8/31	0.1
Kern Zone 11	8/1-8/31	0.06

Kings County

- BLH population surveys were conducted in the overwintering foothills as well as in fallow fields and roadsides within five miles of the foothills.
- Overall counts remained low throughout survey areas, averaging 0-1 BLH per sweep set.
- Host plant vegetation surveyed included Russian Thistle, Salt Bush, Ragweed, and Bassia.
- A map identifying the location of the BLH counts is provided at the end of the report.

Kings County BLH Survey		
<u>Location</u>	<u>Date</u>	<u>Average # of BLH per sweep set</u>
Kings Zone 01	8/1-8/31	0.1
Kings Zone 02	8/1-8/31	0.04
Kings Zone 03	8/1-8/31	0.2

Madera County

- BLH population surveys were conducted in fallow fields and roadsides within five miles of the foothills.
- Overall counts remained low throughout the survey areas, averaging 0-1 BLH per sweep set.
- Host vegetation surveyed included Mallow, Lamb's Quarter, Salt Bush, Bassia, Pig Weed, and Russian Thistle.
- A map identifying BLH counts is provided at the end of the report.

Madera County BLH Survey		
<u>Location</u>	<u>Date</u>	<u>Average # of BLH per sweep set</u>
Madera Zone 01	8/1-8/31	0.2

Merced County

- BLH population surveys were conducted in fallow fields and roadsides within five miles of the foothills.
- Overall counts remained low throughout the survey areas, averaging 0-1 BLH per sweep set.

- Host vegetation surveyed included Bassia, Pig Weed, Kochia, Salt Bush, Mallow, Lamb's Quarter, and Russian Thistle.
- A map identifying BLH counts is provided at the end of the report.

Merced County BLH Survey		
<u>Location</u>	<u>Date</u>	<u>Average # of BLH per sweep set</u>
Merced Zone 01	8/1-8/31	0.1

San Joaquin County

- BLH population surveys were conducted in fallow fields and roadsides within five miles of the foothills.
- Overall counts remained low throughout the survey areas, averaging 0-1 BLH per sweep set.
- Host vegetation surveyed included Mallow and Purslane.
- A map identifying BLH counts is provided at the end of the report.

San Joaquin County BLH Survey		
<u>Location</u>	<u>Date</u>	<u>Average # of BLH per sweep set</u>
San Joaquin Zone 01	8/1-8/31	0.2

Colusa County

- BLH population surveys were conducted in fallow fields and roadsides within five miles of the foothills.
- Overall counts remained low throughout the survey areas, averaging 0-1 BLH per sweep set.
- Host vegetation surveyed included Mallow, Russian Thistle, and Pig Weed.
- A map identifying BLH counts is provided at the end of the report.

Colusa County BLH Survey		
<u>Location</u>	<u>Date</u>	<u>Average # of BLH per sweep set</u>
Colusa Zone 01	8/1-8/31	0.07

Yolo County

- BLH population surveys were conducted in fallow fields and roadsides within five miles of the foothills.
- Overall counts remained very low throughout the survey areas, averaging 0-1 BLH per sweep set.

- Host vegetation surveyed included Mallow and Russian Thistle.
- A map identifying BLH counts is provided at the end of the report.

Yolo County BLH Survey		
<u>Location</u>	<u>Date</u>	<u>Average # of BLH per sweep set</u>
Yolo Zone 01	8/1-8/31	0.03

Sutter County

- BLH population surveys were conducted in fallow fields and roadsides within five miles of the foothills.
- Overall counts remained very low throughout the survey areas, averaging 0-1 BLH per sweep set.
- Host vegetation surveyed included Mallow and Russian Thistle.
- A map identifying BLH counts is provided at the end of the report.

Sutter County BLH Survey		
<u>Location</u>	<u>Date</u>	<u>Average # of BLH per sweep set</u>
Sutter Zone 01	8/1-8/31	0.2

Stanislaus County

- BLH population surveys were conducted in fallow fields and roadsides within five miles of the foothills.
- Overall counts remained very low throughout the survey areas, averaging 0-1 BLH per sweep set.
- Host vegetation surveyed included Pig Weed, Bassia, Russian Thistle, Lamb's Quarter, Salt Bush, Mustards, and Mallow.
- A map identifying BLH counts is provided at the end of the report.

Stanislaus County BLH Survey		
<u>Location</u>	<u>Date</u>	<u>Average # of BLH per sweep set</u>
Stanislaus Zone 01	8/1-8/31	0.07

Glenn County

- BLH population surveys were conducted in fallow fields and roadsides within five miles of the foothills.
- Overall counts remained very low throughout the survey areas, averaging 0-1 BLH per sweep set.

- Host vegetation surveyed included Russian Thistle, Pig Weed, and Mallow.
- A map identifying BLH counts is provided at the end of the report.

Glenn County BLH Survey		
<u>Location</u>	<u>Date</u>	<u>Average # of BLH per sweep set</u>
Glenn Zone 01	8/1-8/31	0.1

Butte County

- BLH population surveys were conducted in fallow fields and roadsides within five miles of the foothills.
- Overall counts remained very low throughout the survey areas, averaging 0-1 BLH per sweep set.
- Host vegetation surveyed included Russian Thistle, Bindweed, Pig Weed, and Mallow.
- A map identifying BLH counts is provided at the end of the report.

Butte County BLH Survey		
<u>Location</u>	<u>Date</u>	<u>Average # of BLH per sweep set</u>
Butte Zone 01	8/1-8/31	0.03

Sacramento County

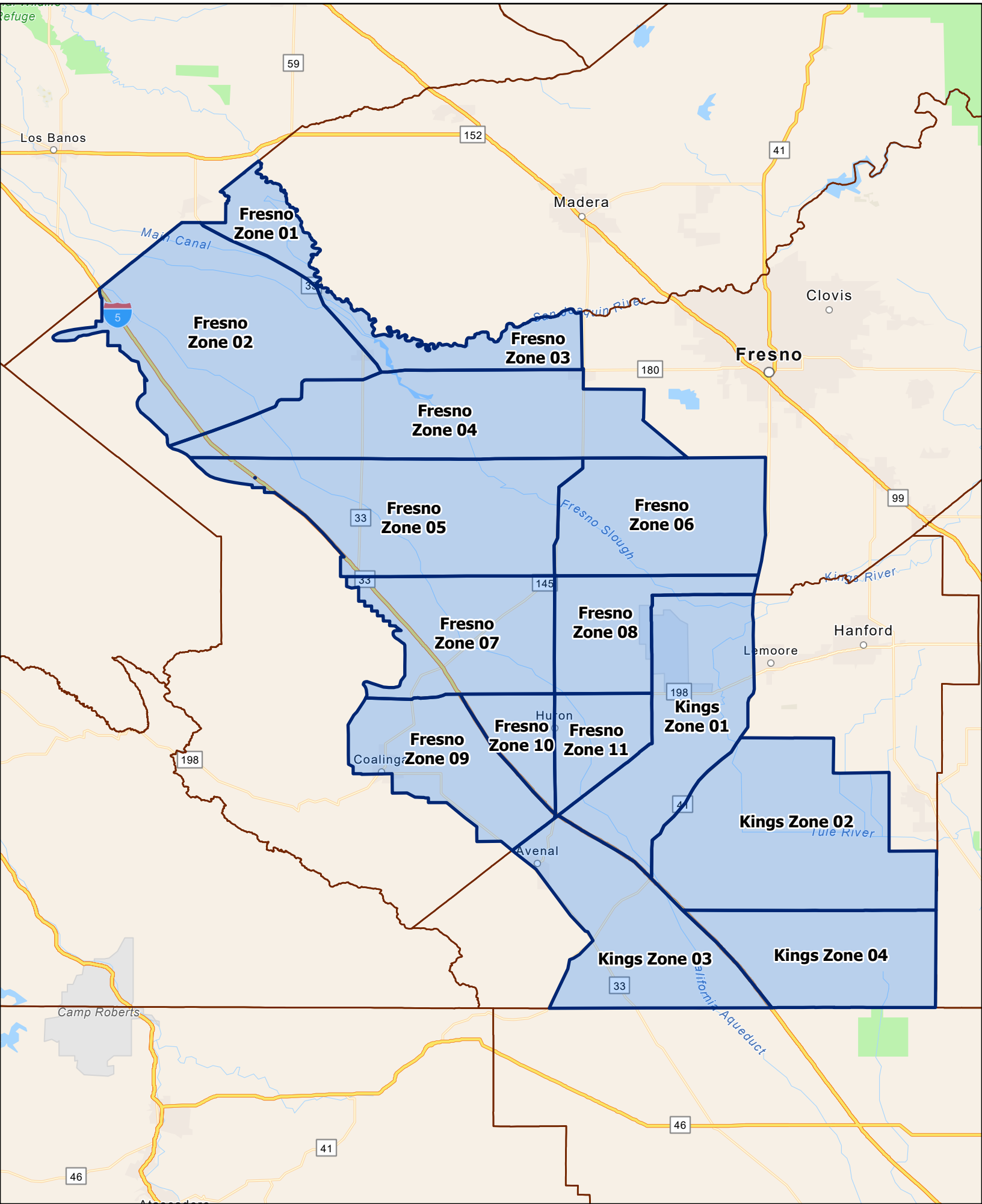
- BLH population surveys were conducted in fallow fields and roadsides within five miles of the foothills.
- No BLH were observed during survey in Sacramento County.

Solano County

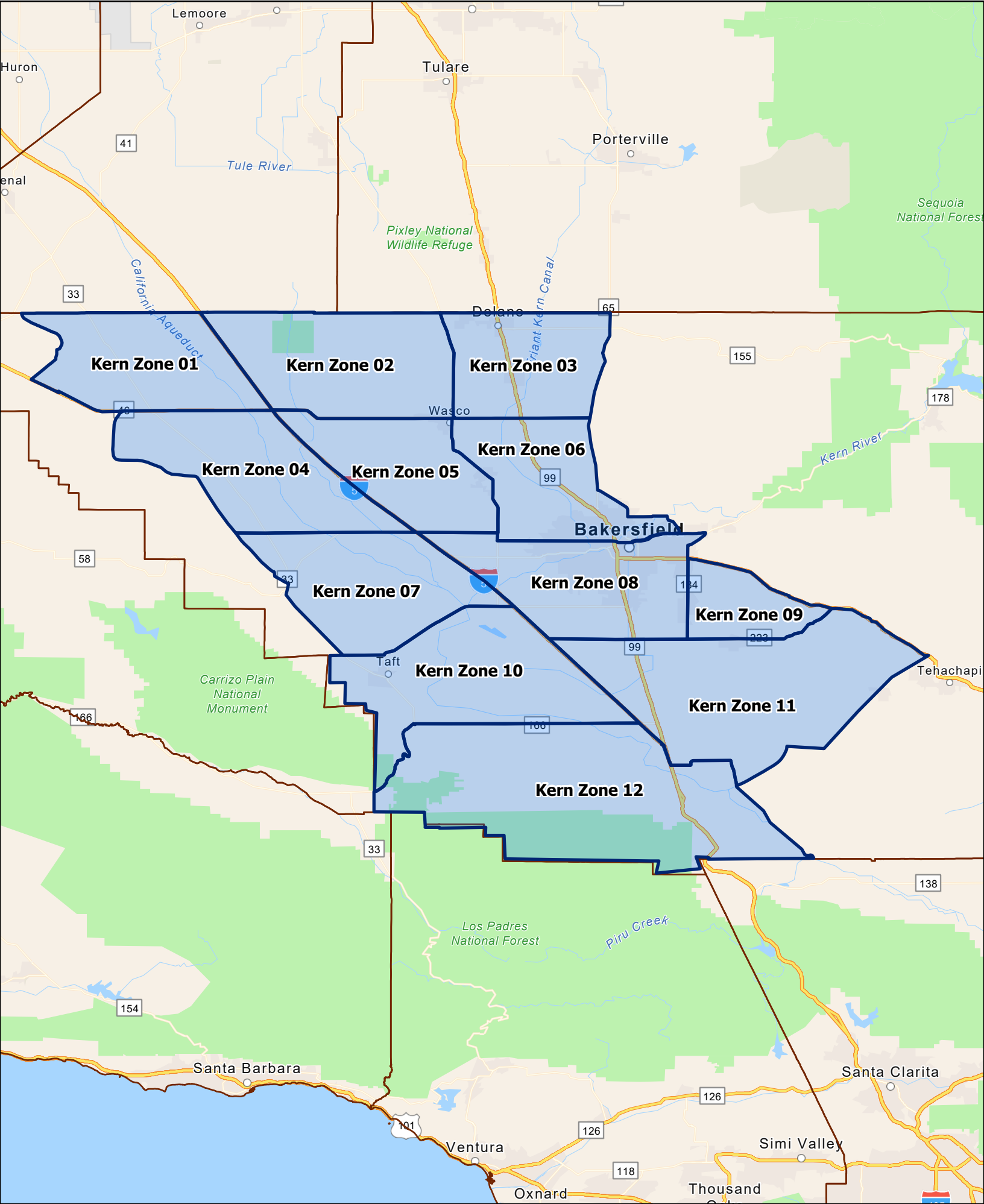
- BLH population surveys were conducted in fallow fields and roadsides within five miles of the foothills.
- No BLH were observed during survey in Solano County.

To subscribe to the BCTV monthly report, updates, and alerts, please use the link below:
www.cdfa.ca.gov/subscriptions/

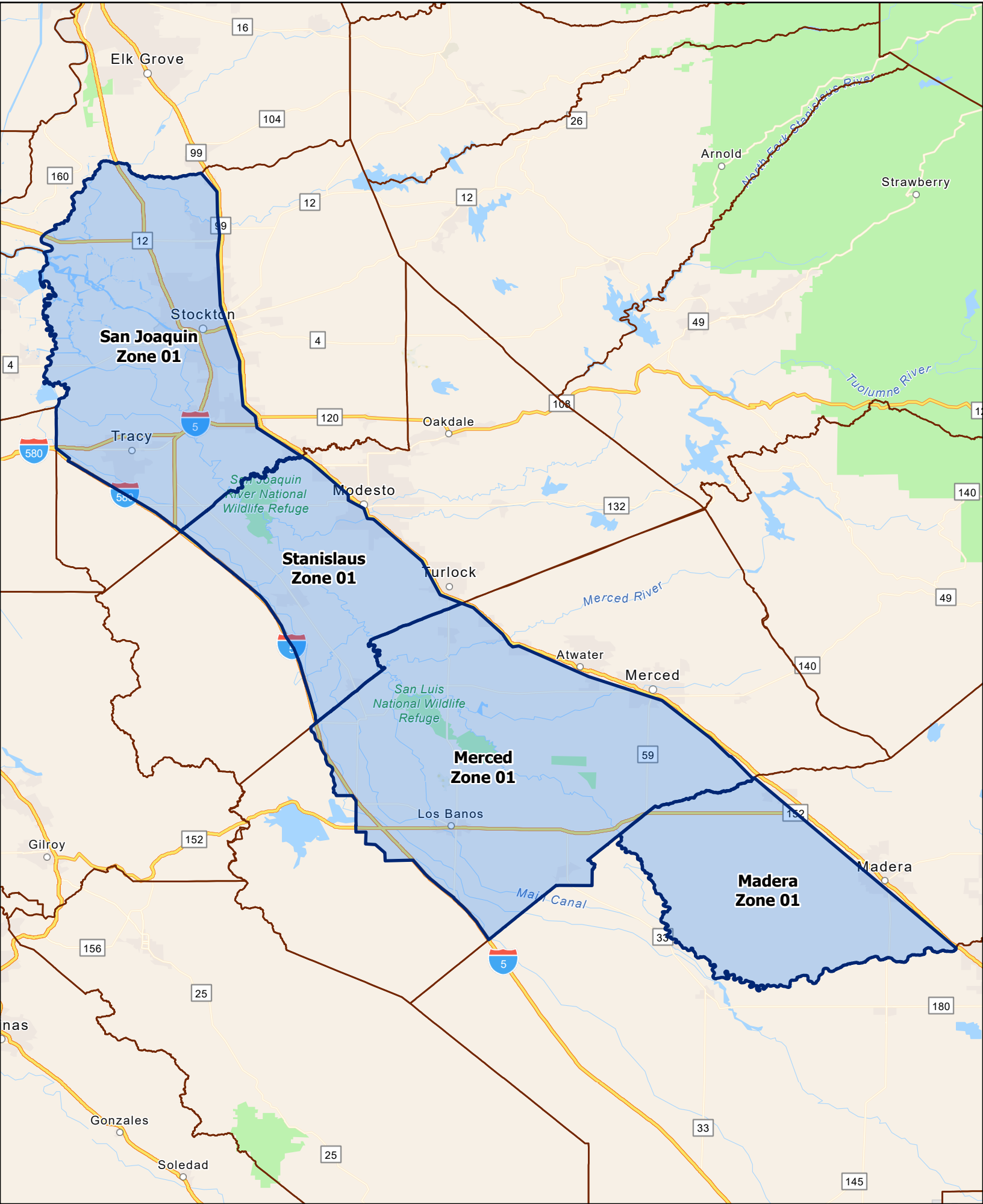
CTV Control Program Survey Zones Fresno & Kings Counties



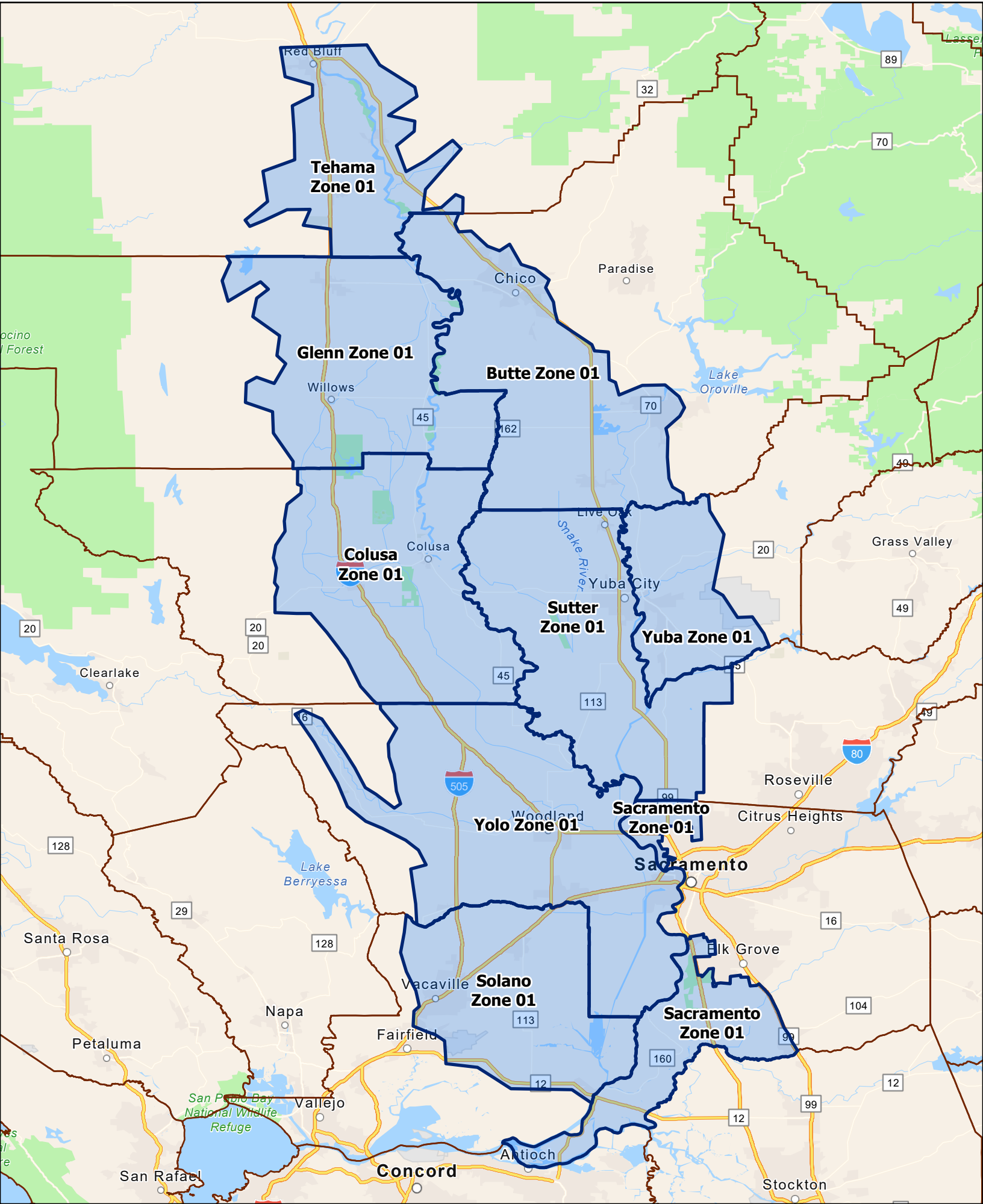
CTV Control Program Survey Zones Kern County



CTV Control Program Survey Zones Madera, Merced, Stanislaus & San Joaquin Counties

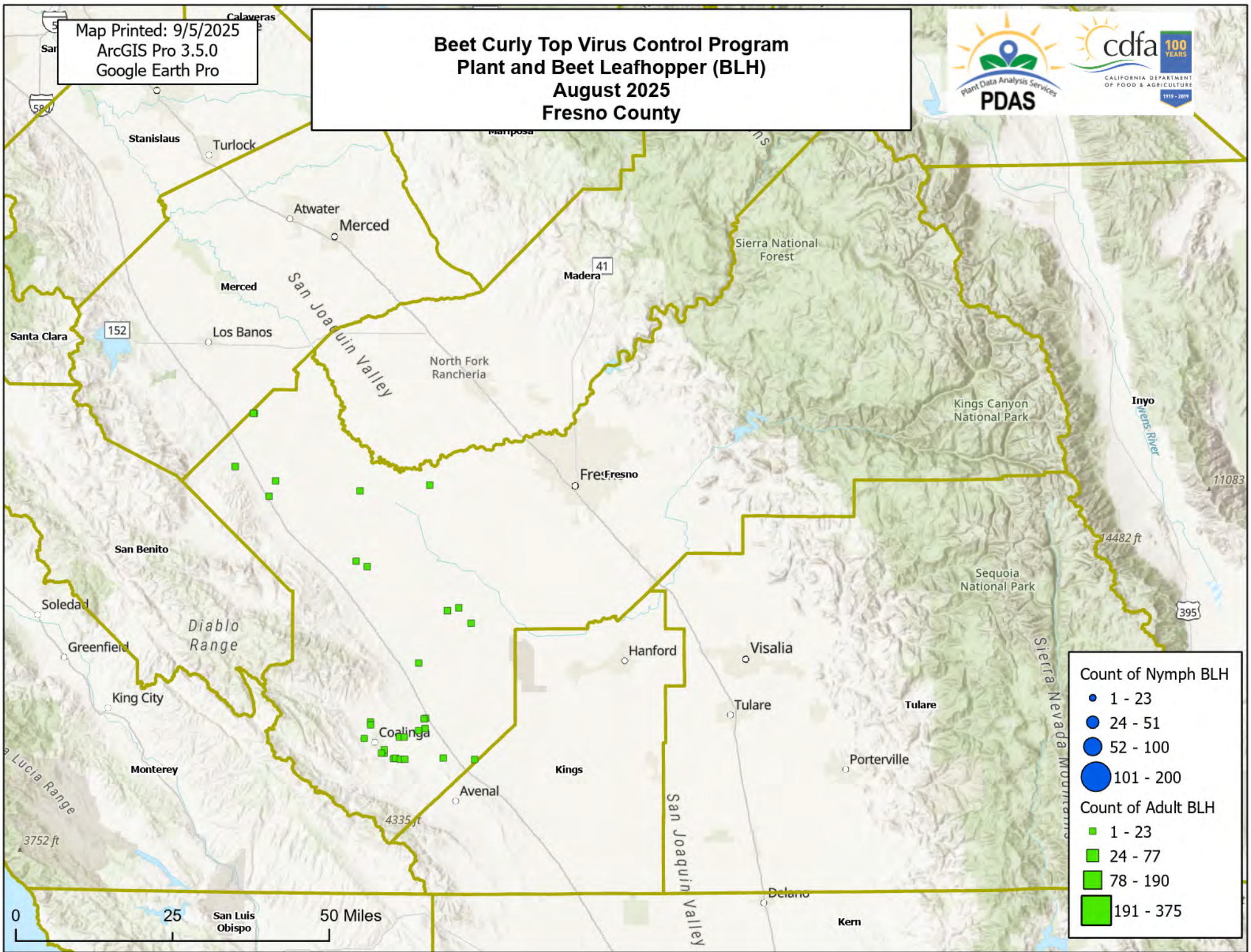


CTV Control Program Survey Zones Sacramento Valley



Map Printed: 9/5/2025
ArcGIS Pro 3.5.0
Google Earth Pro

Beet Curly Top Virus Control Program Plant and Beet Leafhopper (BLH) August 2025 Fresno County



Count of Nymph BLH

- 1 - 23
- 24 - 51
- 52 - 100
- 101 - 200

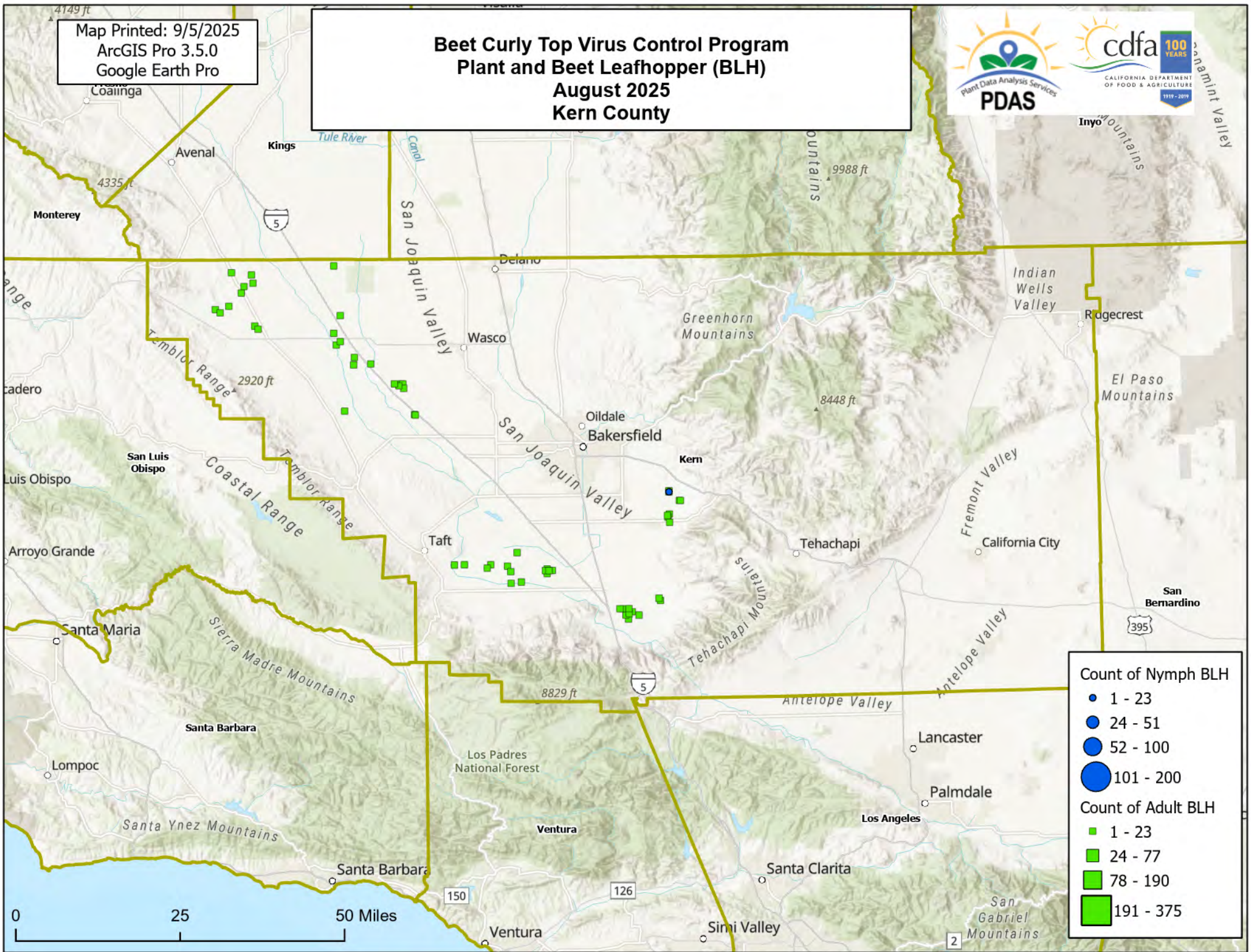
Count of Adult BLH

- 1 - 23
- 24 - 77
- 78 - 190
- 191 - 375

0 25 50 Miles
San Luis Obispo

Map Printed: 9/5/2025
ArcGIS Pro 3.5.0
Google Earth Pro

Beet Curly Top Virus Control Program Plant and Beet Leafhopper (BLH) August 2025 Kern County



Count of Nymph BLH

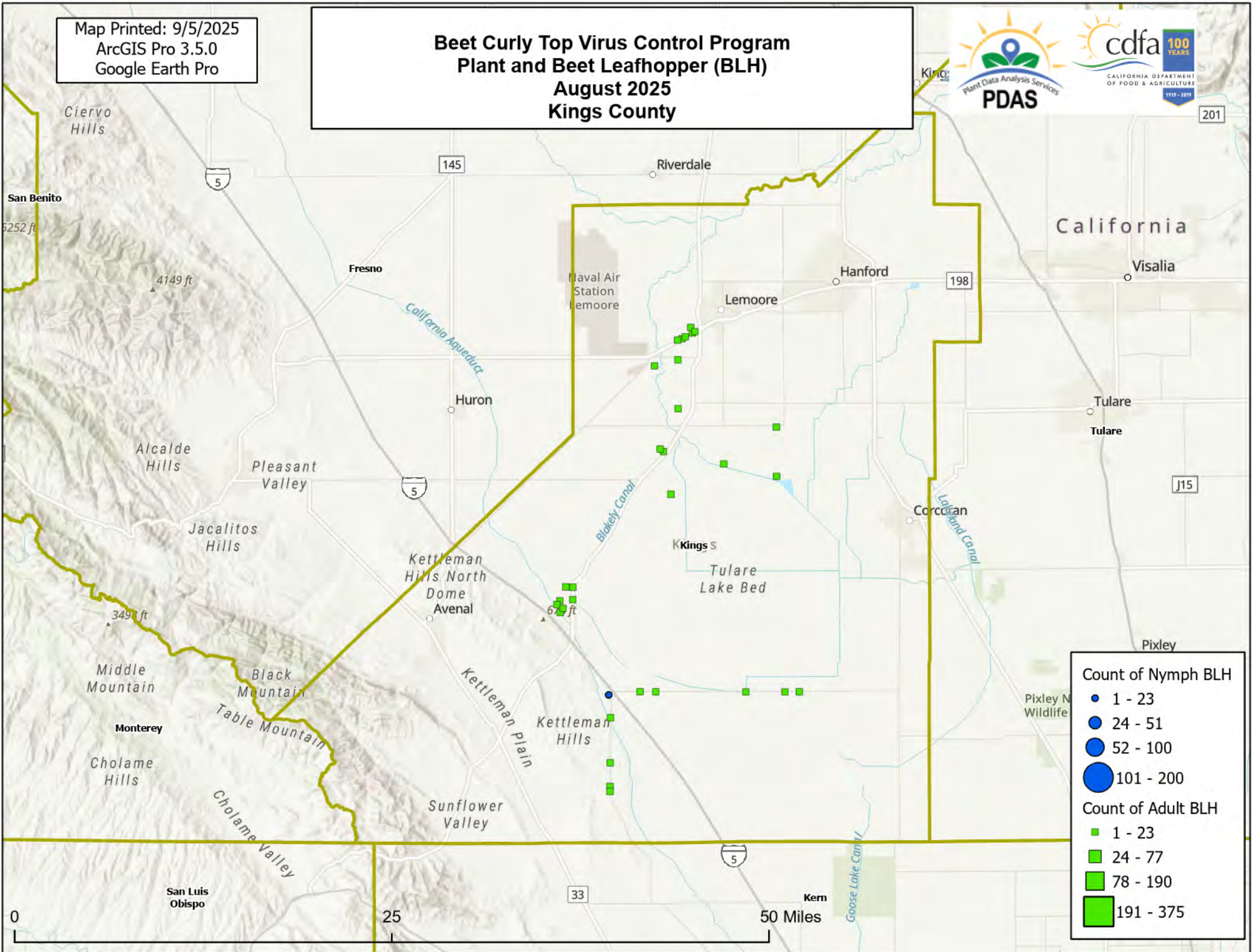
- 1 - 23
- 24 - 51
- 52 - 100
- 101 - 200

Count of Adult BLH

- 1 - 23
- 24 - 77
- 78 - 190
- 191 - 375

Map Printed: 9/5/2025
ArcGIS Pro 3.5.0
Google Earth Pro

Beet Curly Top Virus Control Program Plant and Beet Leafhopper (BLH) August 2025 Kings County



Count of Nymph BLH

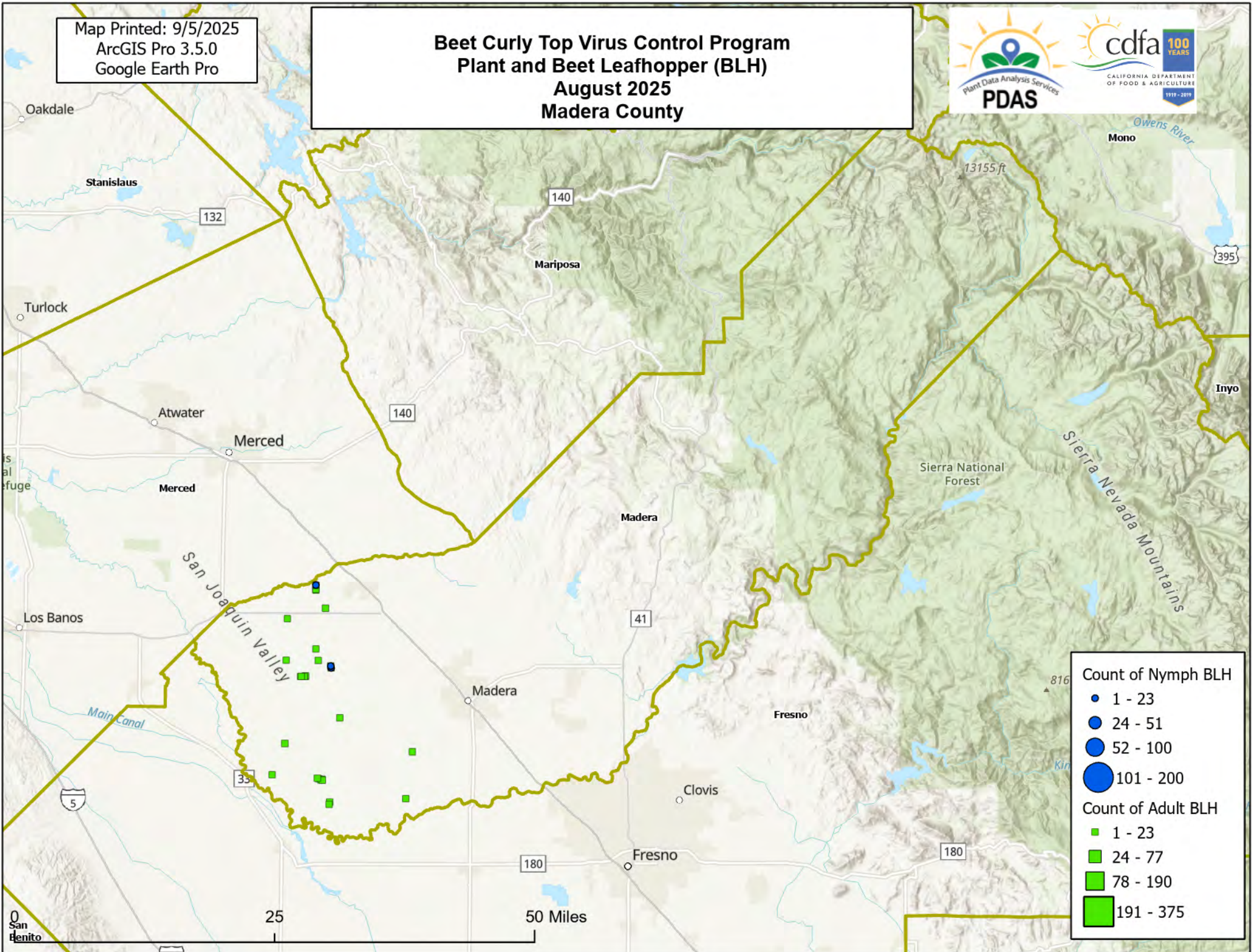
- 1 - 23
- 24 - 51
- 52 - 100
- 101 - 200

Count of Adult BLH

- 1 - 23
- 24 - 77
- 78 - 190
- 191 - 375

Map Printed: 9/5/2025
ArcGIS Pro 3.5.0
Google Earth Pro

Beet Curly Top Virus Control Program Plant and Beet Leafhopper (BLH) August 2025 Madera County



Count of Nymph BLH

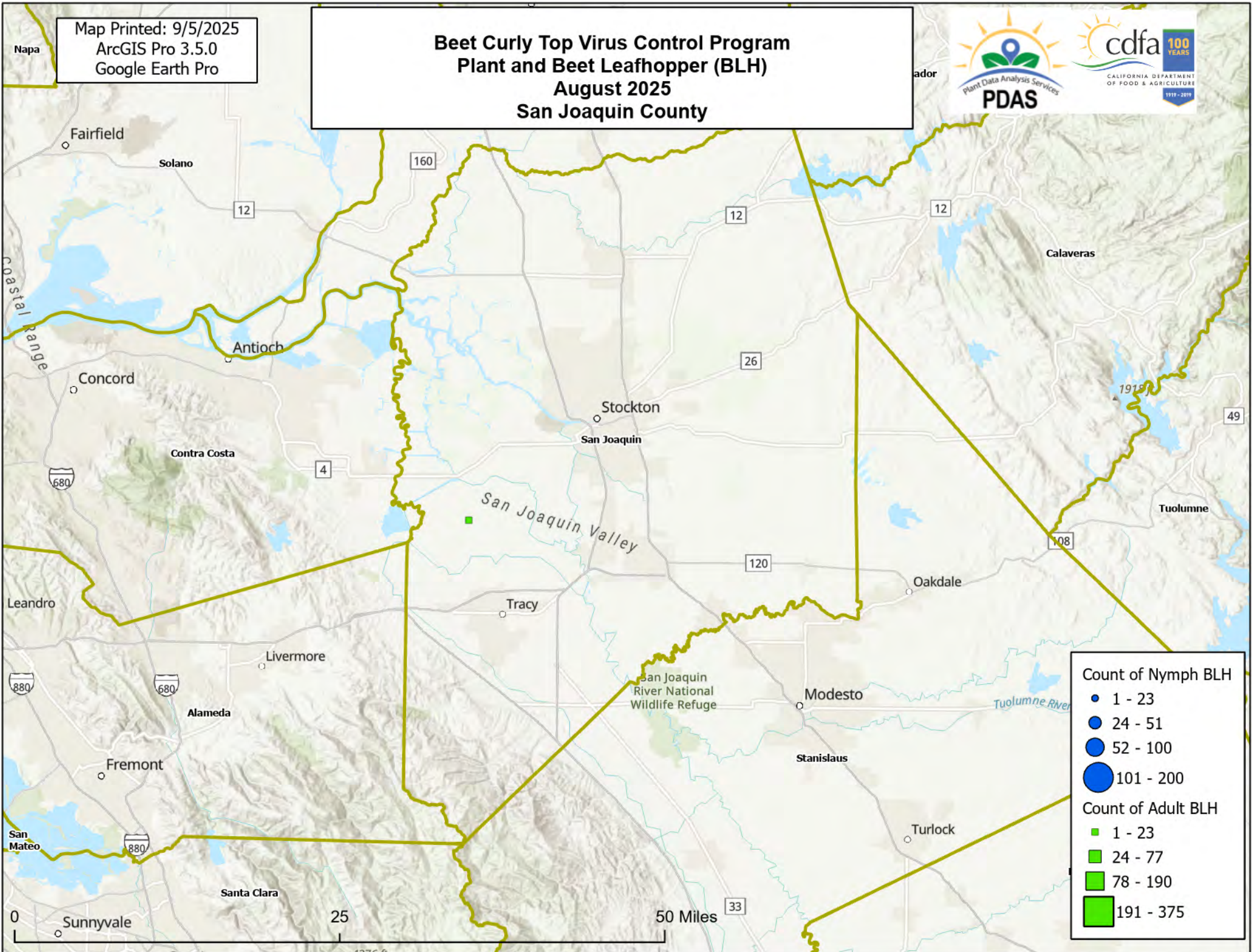
- 1 - 23
- 24 - 51
- 52 - 100
- 101 - 200

Count of Adult BLH

- 1 - 23
- 24 - 77
- 78 - 190
- 191 - 375

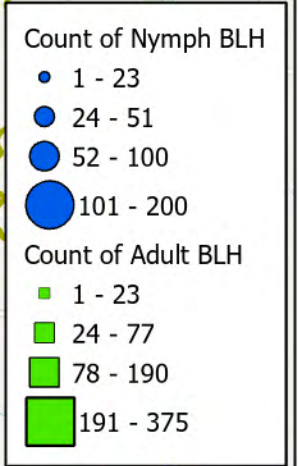
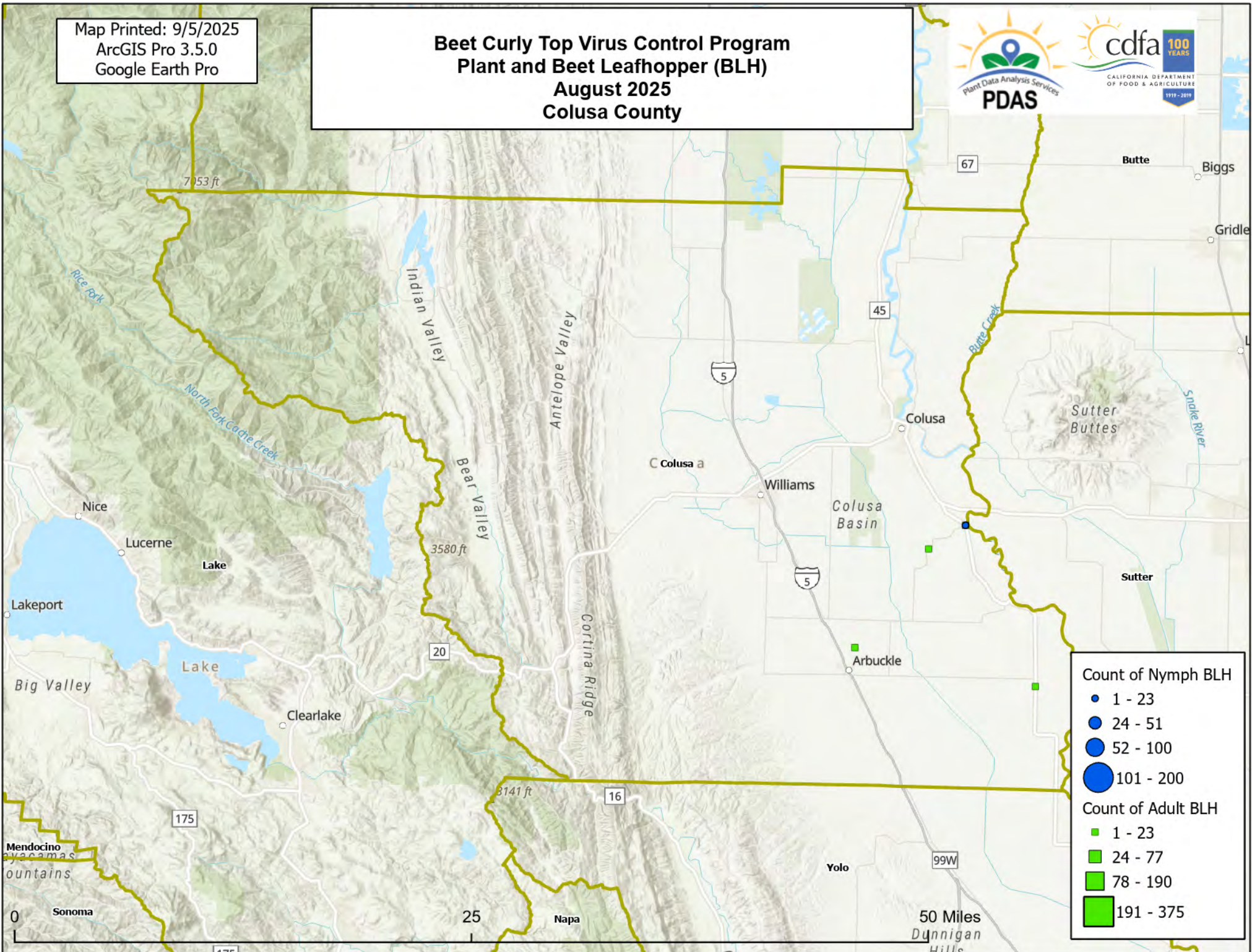
Map Printed: 9/5/2025
ArcGIS Pro 3.5.0
Google Earth Pro

Beet Curly Top Virus Control Program Plant and Beet Leafhopper (BLH) August 2025 San Joaquin County



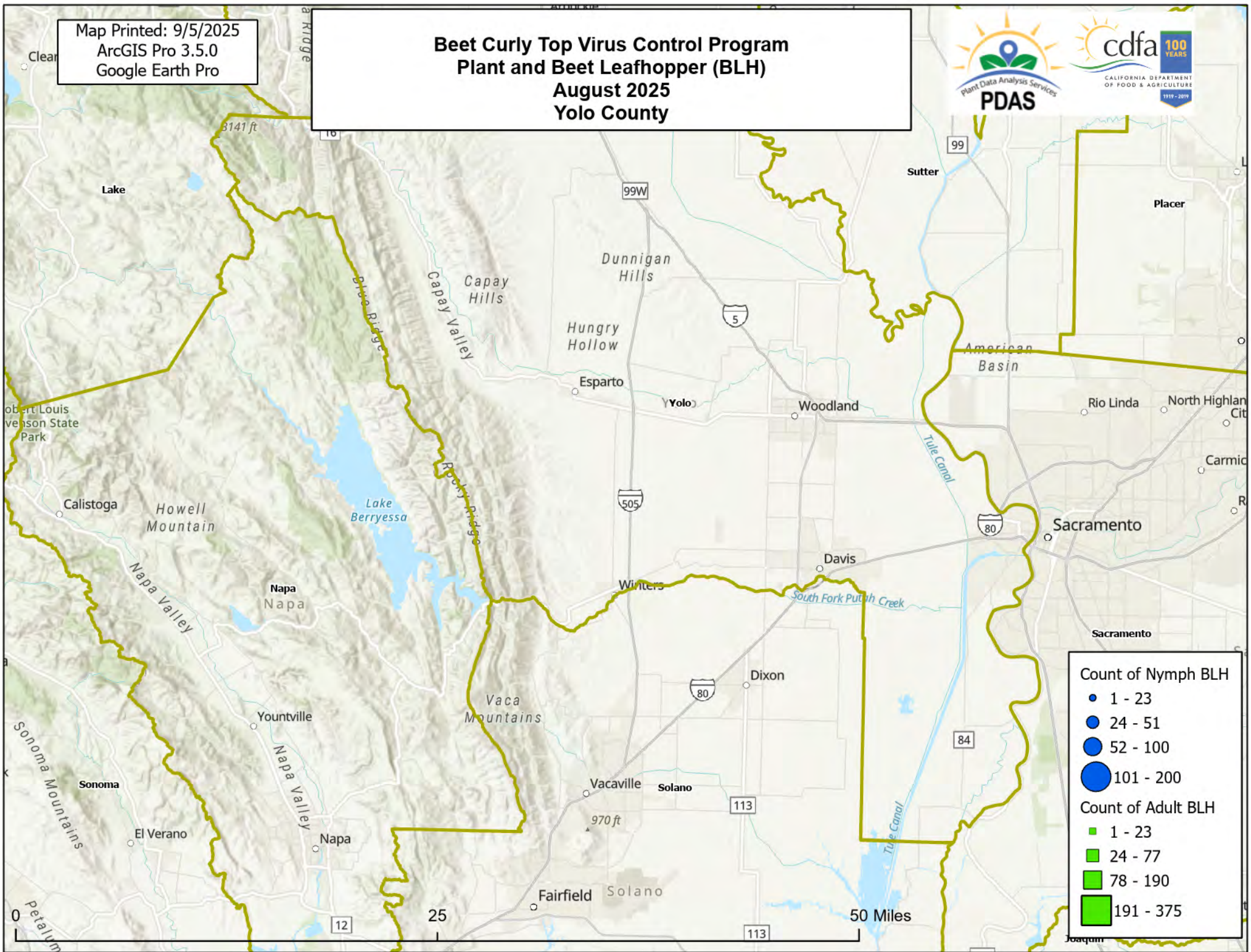
Map Printed: 9/5/2025
ArcGIS Pro 3.5.0
Google Earth Pro

Beet Curly Top Virus Control Program Plant and Beet Leafhopper (BLH) August 2025 Colusa County



Map Printed: 9/5/2025
ArcGIS Pro 3.5.0
Google Earth Pro

Beet Curly Top Virus Control Program Plant and Beet Leafhopper (BLH) August 2025 Yolo County



Count of Nymph BLH

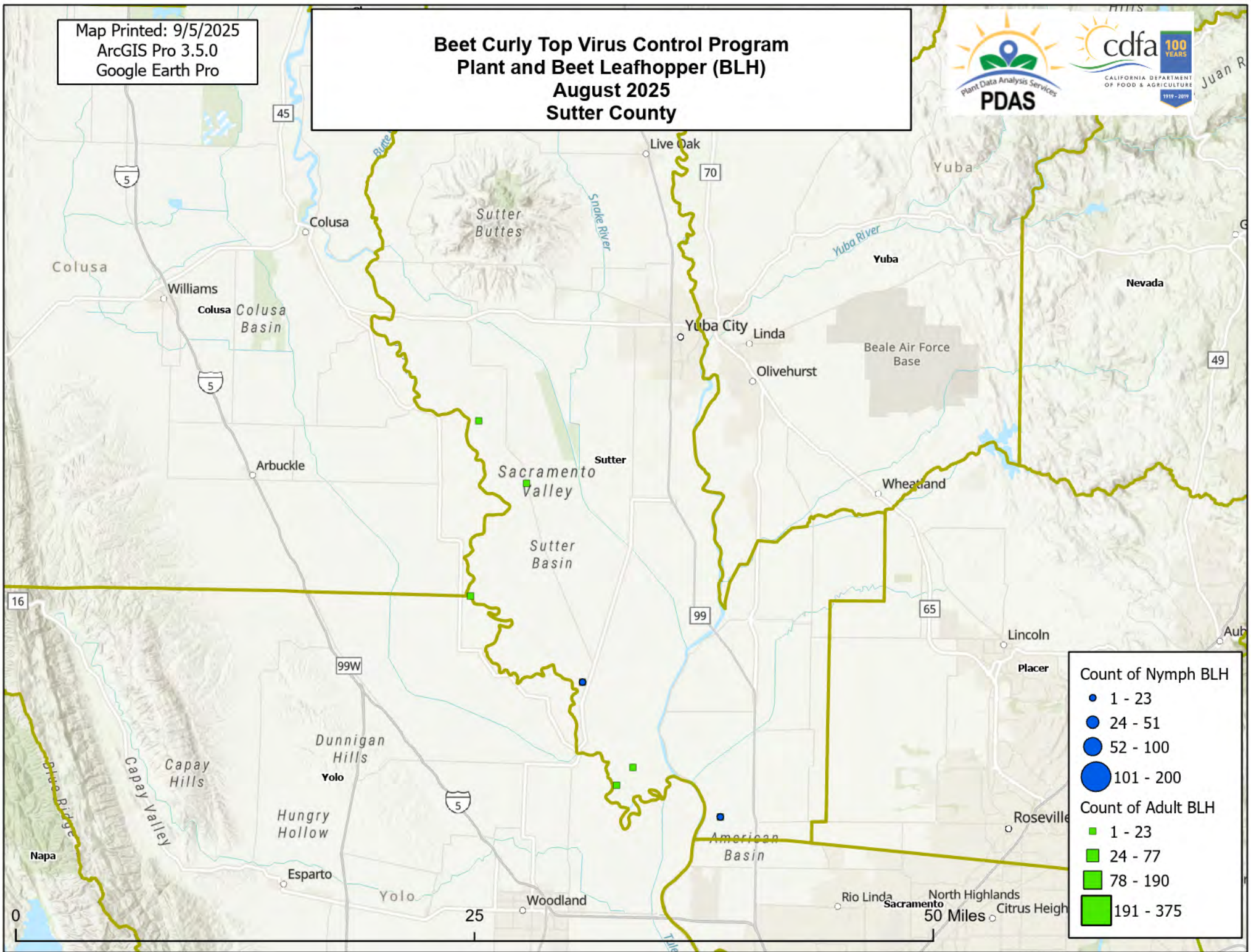
- 1 - 23
- 24 - 51
- 52 - 100
- 101 - 200

Count of Adult BLH

- 1 - 23
- 24 - 77
- 78 - 190
- 191 - 375

Map Printed: 9/5/2025
ArcGIS Pro 3.5.0
Google Earth Pro

Beet Curly Top Virus Control Program Plant and Beet Leafhopper (BLH) August 2025 Sutter County



Count of Nymph BLH

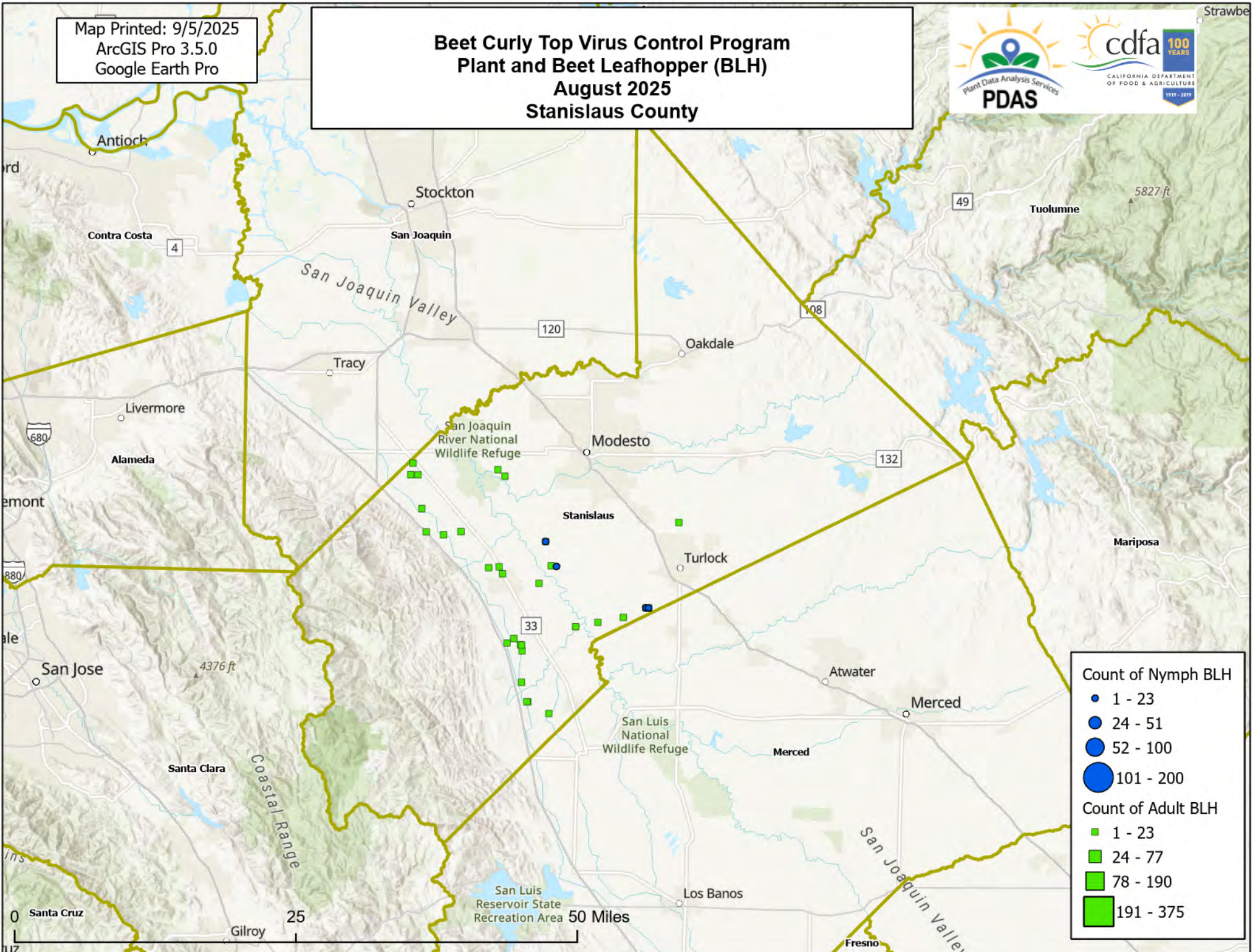
- 1 - 23
- 24 - 51
- 52 - 100
- 101 - 200

Count of Adult BLH

- 1 - 23
- 24 - 77
- 78 - 190
- 191 - 375

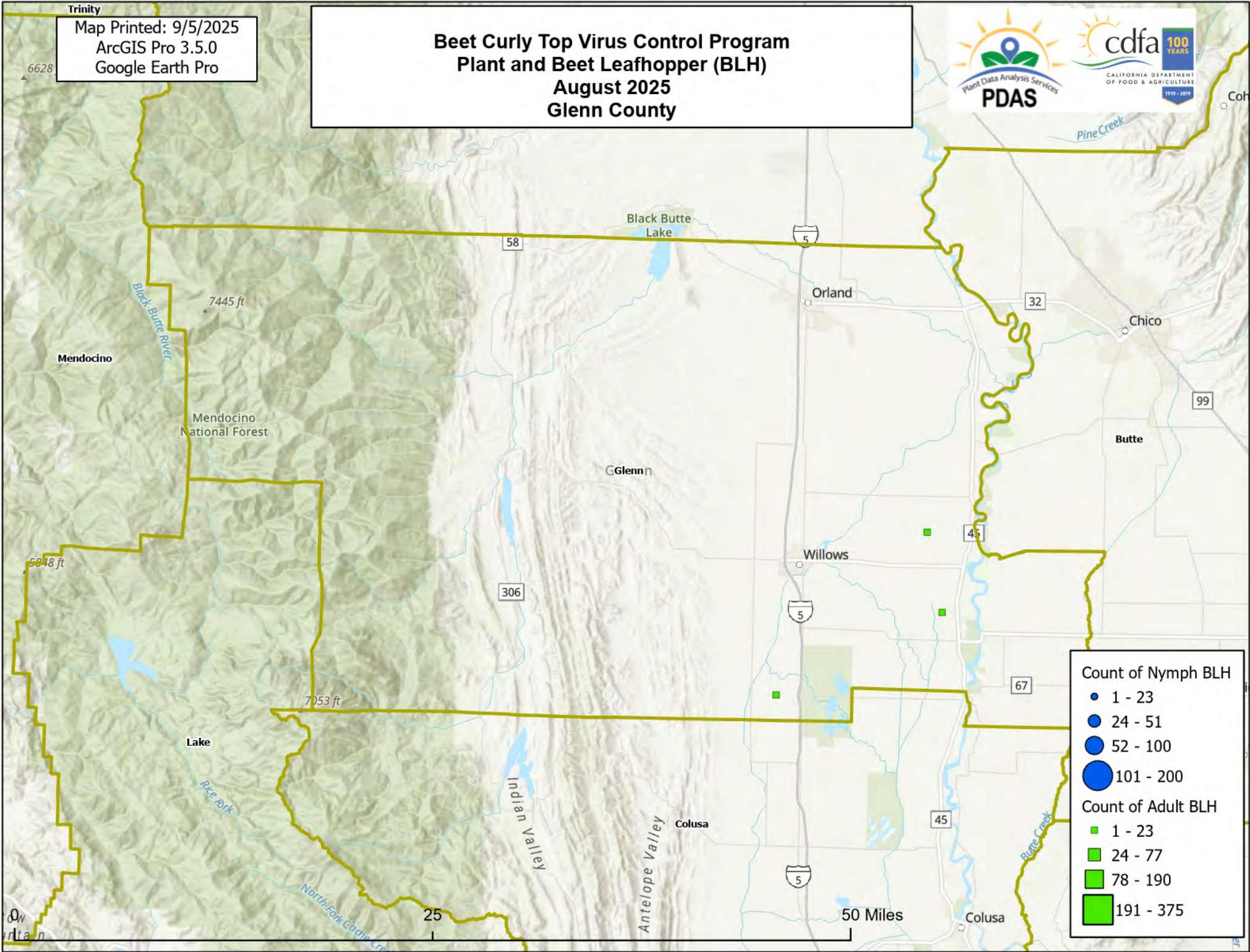
Map Printed: 9/5/2025
ArcGIS Pro 3.5.0
Google Earth Pro

Beet Curly Top Virus Control Program Plant and Beet Leafhopper (BLH) August 2025 Stanislaus County



Trinity
Map Printed: 9/5/2025
ArcGIS Pro 3.5.0
Google Earth Pro

Beet Curly Top Virus Control Program Plant and Beet Leafhopper (BLH) August 2025 Glenn County



Count of Nymph BLH

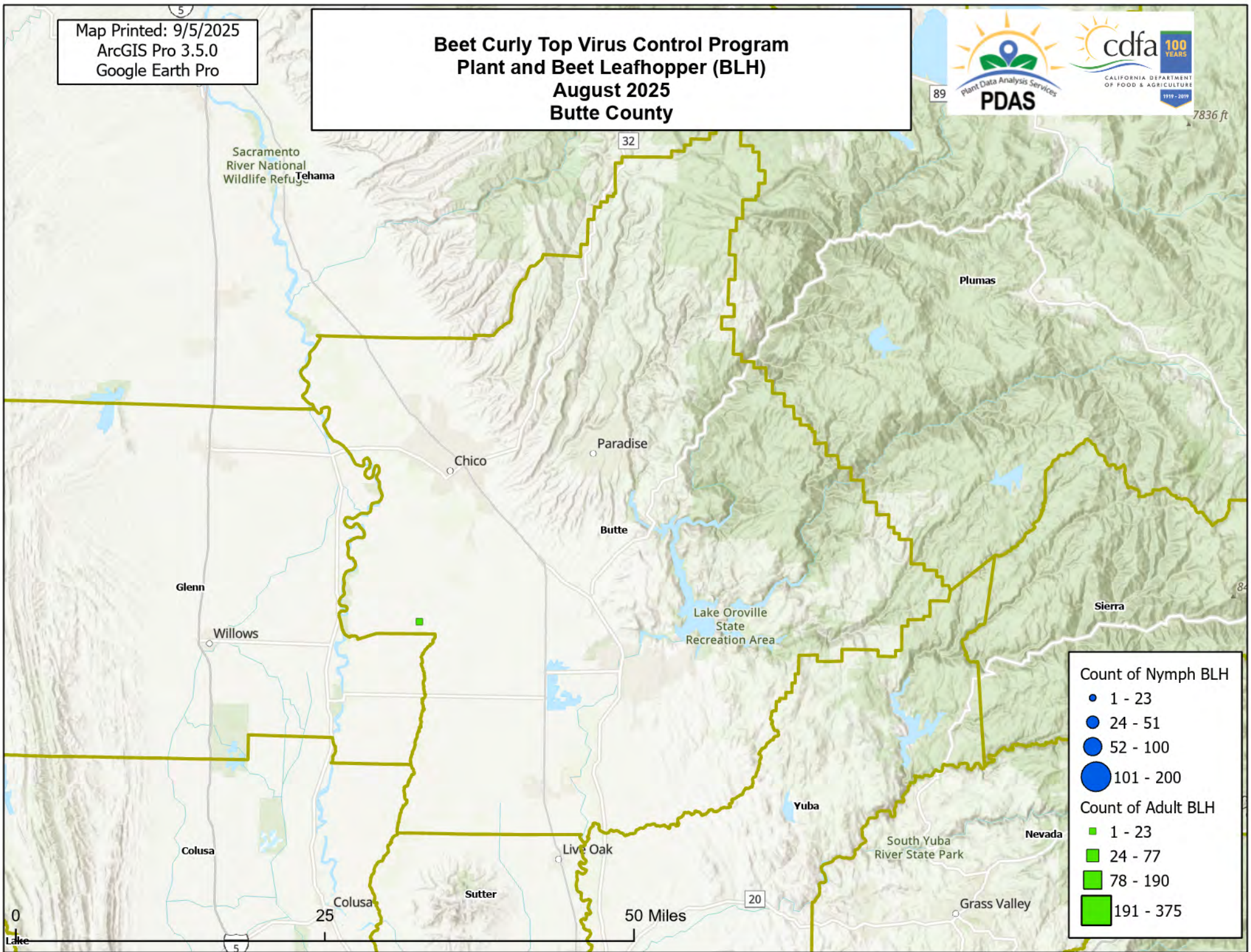
- 1 - 23
- 24 - 51
- 52 - 100
- 101 - 200

Count of Adult BLH

- 1 - 23
- 24 - 77
- 78 - 190
- 191 - 375

Map Printed: 9/5/2025
ArcGIS Pro 3.5.0
Google Earth Pro

Beet Curly Top Virus Control Program Plant and Beet Leafhopper (BLH) August 2025 Butte County



Count of Nymph BLH

- 1 - 23
- 24 - 51
- 52 - 100
- 101 - 200

Count of Adult BLH

- 1 - 23
- 24 - 77
- 78 - 190
- 191 - 375