

Beet Curly Top Virus Control Program

Monthly Report

California Department of Food and Agriculture
Plant Health and Pest Prevention Services
Integrated Pest Control Branch
2895 N. Larkin Ave, Suite A
Fresno, CA 93727
Phone: (559) 294-2031
Fax: (559) 294-2037



December 2024

Program Update

- In December, Beet Curly Top Virus Control Program (BCTVCP) personnel conducted beetle leafhopper (BLH) and vegetation surveys in the foothills on the westside of the San Joaquin and Sacramento Valleys in Fresno, Kern, Kings, Yolo, Sutter, Glenn, Merced, Stanislaus, Butte, Sacramento, San Joaquin, Madera, and Colusa counties.
- BLH counts remained very low or not present in all survey areas statewide (0-1 BLH per sweep).
- Program staff have started Hillside survey. Hillside vegetation is developing slowly due to limited rainfall. Lack of vegetation reduces areas for BLH to overwinter in the hillsides.
- Host vegetation remains under an inch with signs of die off. Filaree is the primary host plant observed in the hillsides along with Peppergrass.
- The Program would like to remind growers and PCA's that any fallow fields or weedy areas adjacent to susceptible crops should be inspected for BLH prior to disking or mowing. The Program can be available for BLH surveys and, if needed, control of fallow fields and/or roadsides where BLH counts reach the control thresholds.
- Please visit the Program's webpage to view Program reports and alerts. https://www.cdfa.ca.gov/plant/ipc/curlytopvirus/ctv_hp.htm
- The BCTVCP has deployed a Beet Leafhopper Sighting Report that industry can use to report BLH or CTV incidence in the field. This report is available using the following web browser link: <https://arcg.is/O9LyK> or by downloading the ArcGIS Survey123 app from the Google Play Store or Apple App Store and using the QR code below. A user guide for the BLH Sighting Report is available on the BCTVCP webpage.



- For program inquiries or questions regarding this report, please contact Kendra Tapia at kendra.tapia@cdfa.ca.gov or (916) 823-1169.

2024 Beet Curly Top Virus Sample Results

January 2024- BCTV Sample Results by County														
	Fresno	Kings	Kern	Merced	Madera	Glenn	Yolo	Colusa	Sutter	Butte	Solano	Sacramento	Stanislaus	San Joaquin
Positive BLH	5	5	1	1	-	-	-	-	-	-	-	-	-	-
Negative BLH	20	10	1	-	-	-	3	3	-	-	-	1	-	-
Positive Host Plant	-	1	1	1	-	-	-	-	-	-	-	-	-	-
Negative Host Plant	62	29	34	10	-	-	9	2	-	-	-	-	6	-

February 2024- BCTV Sample Results by County														
	Fresno	Kings	Kern	Merced	Madera	Glenn	Yolo	Colusa	Sutter	Butte	Solano	Sacramento	Stanislaus	San Joaquin
Positive BLH	6	-	10	-	-	-	-	-	-	-	-	-	-	-
Negative BLH	40	23	43	-	-	-	-	-	5	-	-	-	1	3
Positive Host Plant	3	-	1	-	-	-	-	-	-	-	-	-	-	-
Negative Host Plant	140	46	159	11	2	18	2	5	55	4	11	-	24	9

March 2024- BCTV Sample Results by County														
	Fresno	Kings	Kern	Merced	Madera	Glenn	Yolo	Colusa	Sutter	Butte	Solano	Sacramento	Stanislaus	San Joaquin
Positive BLH	9	3	3	-	-	-	-	-	-	-	-	-	-	-
Negative BLH	62	4	9	-	-	-	-	-	-	-	-	-	-	2
Positive Host Plant	8	7	6	-	-	-	-	-	-	-	-	-	-	-
Negative Host Plant	288	53	158	21	34	5	17	-	26	-	15	13	70	36

April 2024- BCTV Sample Results by County														
	Fresno	Kings	Kern	Merced	Madera	Glenn	Yolo	Colusa	Sutter	Butte	Solano	Sacramento	Stanislaus	San Joaquin
Positive BLH	13	10	3	-	-	2	-	-	-	-	-	-	-	-
Negative BLH	22	10	4	-	-	3	2	7	2	5	-	1	6	3
Positive Host Plant	4	2	5	3	-	-	-	-	-	1	-	-	-	-
Negative Host Plant	223	96	151	40	53	5	8	15	5	11	16	8	74	15

May 2024- BCTV Sample Results by County																
	Fresno	Kings	Kern	Merced	Madera	Glenn	Yolo	Colusa	Sutter	Butte	Solano	Sacramento	Stanislaus	San Joaquin	Imperial	Monterey
Positive BLH	6	6	5	-	-	-	-	-	-	-	-	-	-	-	15	-
Negative BLH	8	2	3	-	1	-	-	4	6	5	2	-	-	7	-	-
Positive Host Plant	11	3	18	-	-	-	-	2	-	-	1	-	-	-	12	
Negative Host Plant	83	35	144	33	36	4	9	9	11	7	8	1	-	11	14	11
Positive Commodity Plants	27	-	10	2	-	-	1	-	-	-	-	-	-	-	-	-
Negative Commodity Plants	42	13	15	-	-	-	1	-	-	-	-	-	-	-	4	-

June 2024- BCTV Sample Results by County															
	Fresno	Kings	Kern	Merced	Madera	Glenn	Yolo	Colusa	Sutter	Butte	Solano	Sacramento	Stanislaus	San Joaquin	Tehama
Positive BLH	3	-	-	-	-	-	-	-	-	-	-	1	-	-	1
Negative BLH	-	-	2	-	-	-	-	-	-	-	-	-	-	-	9
Positive Host Plant	-	-	12	-	-	-	-	-	-	-	-	-	-	-	-
Negative Host Plant	5	-	124	1	3	-	-	-	-	-	-	4	4	-	14
Positive Commodity Plants	7	6	49	1	-	-	1	-	-	-	-	-	1	-	1
Negative Commodity Plants	24	7	31	4	2	-	5	11	6	-	-	1	6	5	5

July 2024- BCTV Sample Results by County

	Fresno	Kings	Kern	Merced	Madera	Glenn	Yolo	Colusa	Sutter	Butte	Solano	Sacramento	Stanislaus	San Joaquin	Tehama
Positive BLH	-	-	-	-	-	-	-	-	-	-	-	-	-	-	-
Negative BLH	-	-	-	-	-	-	-	-	-	-	-	-	-	-	-
Positive Host Plant	1	-	52	-	-	-	-	-	-	-	-	-	1	-	-
Negative Host Plant	5	-	138	-	-	-	-	-	-	-	-	-	1	-	-
Positive Commodity Plants	-	-	3	-	-	-	-	-	-	-	-	-	-	-	-
Negative Commodity Plants	-	-	5	7	-	-	-	-	-	-	-	-	-	-	-

August 2024- BCTV Sample Results by County

	Fresno	Kings	Kern	Merced	Madera	Glenn	Yolo	Colusa	Sutter	Butte	Solano	Sacramento	Stanislaus	San Joaquin	Tehama
Positive BLH	2	-	1	-	-	-	-	-	-	-	-	-	-	-	-
Negative BLH	3	-	3	-	-	-	-	-	-	-	-	-	-	-	-
Positive Host Plant	12	4	100	4	2	-	-	-	-	-	-	-	5	1	-
Negative Host Plant	27	11	209	4	-	10	2	2	5	-	1	3	6	2	-
Positive Commodity Plants	-	-	-	-	-	1	-	-	-	-	-	-		1	-
Negative Commodity Plants	-	-	-	-	-	16	3	29	5	-	25	14	-	12	-

September 2024- BCTV Sample Results by County

	Fresno	Kings	Kern	Merced	Madera	Glenn	Yolo	Colusa	Sutter	Butte	Solano	Sacramento	Stanislaus	San Joaquin	Yuba
Positive BLH	4	-	1	-	-	-	-	-	-	-	-	-	-	-	-
Negative BLH	2	2	-	-	-	-	-	-	-	-	-	-	-	-	-
Positive Host Plant	4	1	73	5	2	1	-	-	-	-	-	-	3	-	-
Negative Host Plant	5	2	158	5	2	3	14	18	7	13	4	13	5	18	1
Positive Commodity Plants	-	-	-	-	-	-	-	-	1	-	-	-		-	-
Negative Commodity Plants	-	-	-	-	-	-	6	5	6	3	7	17	-	25	-

October 2024- BCTV Sample Results by County

	Fresno	Kings	Kern	Merced	Madera	Glenn	Yolo	Colusa	Sutter	Butte	Solano	Sacramento	Stanislaus	San Joaquin	Yuba
Positive BLH	9	1	-	1	-	-	-	-	-	-	-	-	1	-	-
Negative BLH	7	3	2	1	-	-	-	-	-	-	-	-	1	-	-
Positive Host Plant	8	3	10	5	2	1	-	-	2	-	-	-	1	1	-
Negative Host Plant	18	3	95	4	1	14	24	20	59	20	33	12	8	16	-
Positive Commodity Plants	-	-	-	-	-	-	-	-	-	-	-	-		-	-
Negative Commodity Plants	-	-	-	1	-	-	2	1	3	2	2	-	1	4	-

November 2024- BCTV Sample Results by County

	Fresno	Kings	Kern	Merced	Madera	Glenn	Yolo	Colusa	Sutter	Butte	Solano	Sacramento	Stanislaus	San Joaquin
Positive BLH	-	-	-	-	-	-	-	-	-	-	-	-	-	-
Negative BLH	-	-	-	-	-	-	-	-	-	-	-	-	-	-
Positive Host Plant	-	-	-	-	-	-	-	-	-	-	-	-	-	2
Negative Host Plant	-	-	4	-	-	8	18	2	18	3	9	9	-	9
Positive Commodity Plants	-	-	-	-	-	-	-	-	-	-	-	-		-
Negative Commodity Plants	-	-	-	-	-	-	-	-	-	1	-	-	-	-

December 2024- BCTV Sample Results by County

[illegible]

County Reports

Fresno County

- BLH population surveys were conducted in the overwintering foothills as well as in fallow fields and roadsides within five miles of the foothills.
- Overall counts remained low throughout survey areas, averaging 0-1 BLH per sweep set.
- Host plant vegetation surveyed included Russian Thistle, Filaree, and London Rocket.
- A map identifying the location of the BLH counts is provided at the end of the report.

Fresno County BLH Survey		
<u>Location</u>	<u>Date</u>	<u>Average # of BLH per sweep set</u>
Coalinga Nose	12/16/2024	0.8
E/o Coalinga Nose	12/16/2024	1.2

Kern County

- BLH population surveys were conducted in the overwintering foothills as well as in fallow fields and roadsides within five miles of the foothills.
- No BLH were observed during survey in Kern County.

Kings County

- BLH population surveys were conducted in the overwintering foothills as well as in fallow fields and roadsides within five miles of the foothills.
- No BLH were observed during survey in Kings County.

Madera County

- BLH population surveys were conducted in fallow fields and roadsides within five miles of the foothills.
- Overall counts remained low throughout the survey areas, averaging 0-1 BLH per sweep set.
- Host vegetation surveyed included Mallow, Filaree, Mustards, and Russian

Thistle.

- A map identifying BLH counts is provided at the end of the report.

Madera County BLH Survey		
<u>Location</u>	<u>Date</u>	<u>Average # of BLH per sweep set</u>
Ave 14	12/15/2024	0.1

Merced County

- BLH population surveys were conducted in fallow fields and roadsides within five miles of the foothills.
- Overall counts remained low throughout the survey areas, averaging 0-1 BLH per sweep set.
- Host vegetation surveyed included Mallow.
- A map identifying BLH counts is provided at the end of the report.

Merced County BLH Survey		
<u>Location</u>	<u>Date</u>	<u>Average # of BLH per sweep set</u>
S Whitworth Rd	12/15/2024	0.6

San Joaquin County

- BLH population surveys were conducted in fallow fields and roadsides within five miles of the foothills.
- Overall counts remained low throughout the survey areas, averaging 0-1 BLH per sweep set.
- Host vegetation surveyed included Mallow, Filaree, Mustards, Bindweed, and Russian Thistle.
- A map identifying BLH counts is provided at the end of the report.

San Joaquin County BLH Survey		
<u>Location</u>	<u>Date</u>	<u>Average # of BLH per sweep set</u>
Terminus	12/2/2024	0.6
Kile Rd	12/2/2024	0.2
W Linne Rd	12/3/2024	0.6
W Valpico Rd	12/3/2024	0.2
S Roberts Rd	12/4/2024	2.8

Howard Rd	12/4/2024	0.4
W Lower Jones Rd	12/4/2024	0.2
W Bacon Island d	12/4/2024	0.2
Howard Rd	12/15/2024	0.3

Colusa County

- BLH population surveys were conducted in fallow fields and roadsides within five miles of the foothills.
- Overall counts remained low throughout the survey areas, averaging 0-1 BLH per sweep set.
- Host vegetation surveyed included Mallow, Mustards, Filaree and Bindweed.
- A map identifying BLH counts is provided at the end of the report.

Colusa County BLH Survey		
<u>Location</u>	<u>Date</u>	<u>Average # of BLH per sweep set</u>
Maxwell Sites Rd	12/3/2024	0.6
Hershey	12/3/2024	0.4

Yolo County

- BLH population surveys were conducted in fallow fields and roadsides within five miles of the foothills.
- Overall counts remained very low throughout the survey areas, averaging 0-1 BLH per sweep set.
- Host vegetation surveyed included Mallow, Russian Thistle, Filaree, and Mustards.
- A map identifying BLH counts is provided at the end of the report.

Yolo County BLH Survey		
<u>Location</u>	<u>Date</u>	<u>Average # of BLH per sweep set</u>
County Rd 87B	12/2/2024	1.6
County Rd 95A	12/3/2024	0.4
County Rd 95	12/16/2024	0.2
County Rd 29	12/16/2024	0.2
County Rd 29	12/16/2024	0.2

Sutter County

- BLH population surveys were conducted in fallow fields and roadsides within five miles of the foothills.
- Overall counts remained very low throughout the survey areas, averaging 0-1 BLH per sweep set.
- Host vegetation surveyed included Mallow and Mustards.
- A map identifying BLH counts is provided at the end of the report.

Sutter County BLH Survey		
<u>Location</u>	<u>Date</u>	<u>Average # of BLH per sweep set</u>
S George Washington Blvd	12/10/2024	1.0

Stanislaus County

- BLH population surveys were conducted in fallow fields and roadsides within five miles of the foothills.
- No BLH were observed during survey in Stanislaus County.

Glenn County

- BLH population surveys were conducted in fallow fields and roadsides within five miles of the foothills.
- Overall counts remained very low throughout the survey areas, averaging 0-1 BLH per sweep set.
- Host vegetation surveyed included Mallow, Mustards, Filaree, and Russian Thistle.
- A map identifying BLH counts is provided at the end of the report.

Glenn County BLH Survey		
<u>Location</u>	<u>Date</u>	<u>Average # of BLH per sweep set</u>
Hwy 162	12/8/2024	0.4

Butte County

- BLH population surveys were conducted in fallow fields and roadsides within five miles of the foothills.
- Overall counts remained very low throughout the survey areas, averaging 0-1 BLH per sweep set.
- Host vegetation surveyed included Mustards, Filaree, and Bindweed.
- A map identifying BLH counts is provided at the end of the report.

Butte County BLH Survey		
<u>Location</u>	<u>Date</u>	<u>Average # of BLH per sweep set</u>
Wickman Rd	12/9/2024	0.2

Sacramento County

- BLH population surveys were conducted in fallow fields and roadsides within five miles of the foothills.
- No BLH were observed during survey in Sacramento County.

Solano County

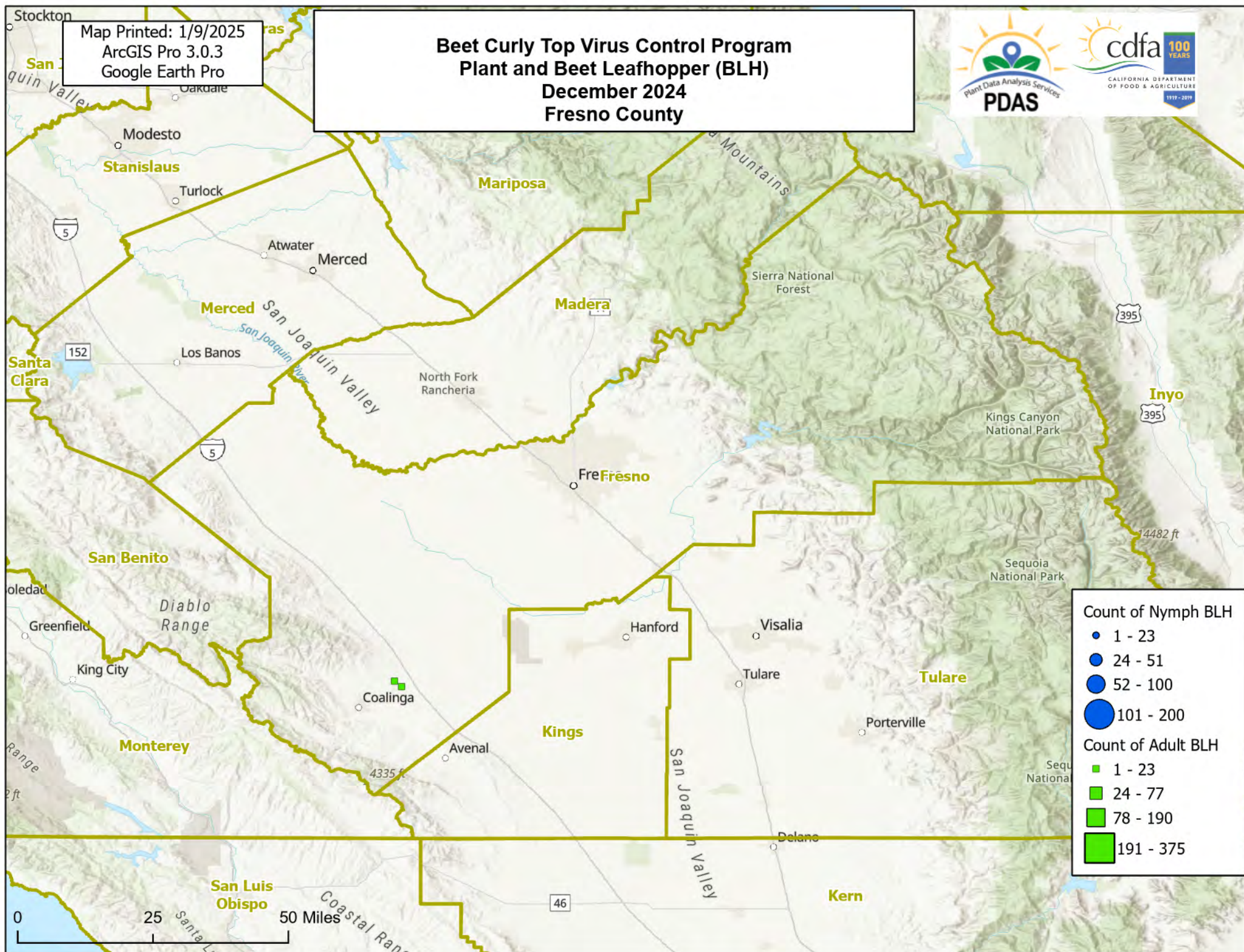
- BLH population surveys were conducted in fallow fields and roadsides within five miles of the foothills.
- Overall counts remained very low throughout the survey areas, averaging 0-1 BLH per sweep set.
- Host vegetation surveyed included Mallow, Mustards, Filaree, and Plantain.
- A map identifying BLH counts is provided at the end of the report.

Solano County BLH Survey		
<u>Location</u>	<u>Date</u>	<u>Average # of BLH per sweep set</u>
Currey Rd	12/9/2024	1.0

To subscribe to the BCTV monthly report, updates, and alerts, please use the link below:
www.cdfa.ca.gov/subscriptions/

Map Printed: 1/9/2025
ArcGIS Pro 3.0.3
Google Earth Pro

Beet Curly Top Virus Control Program Plant and Beet Leafhopper (BLH) December 2024 Fresno County



Count of Nymph BLH

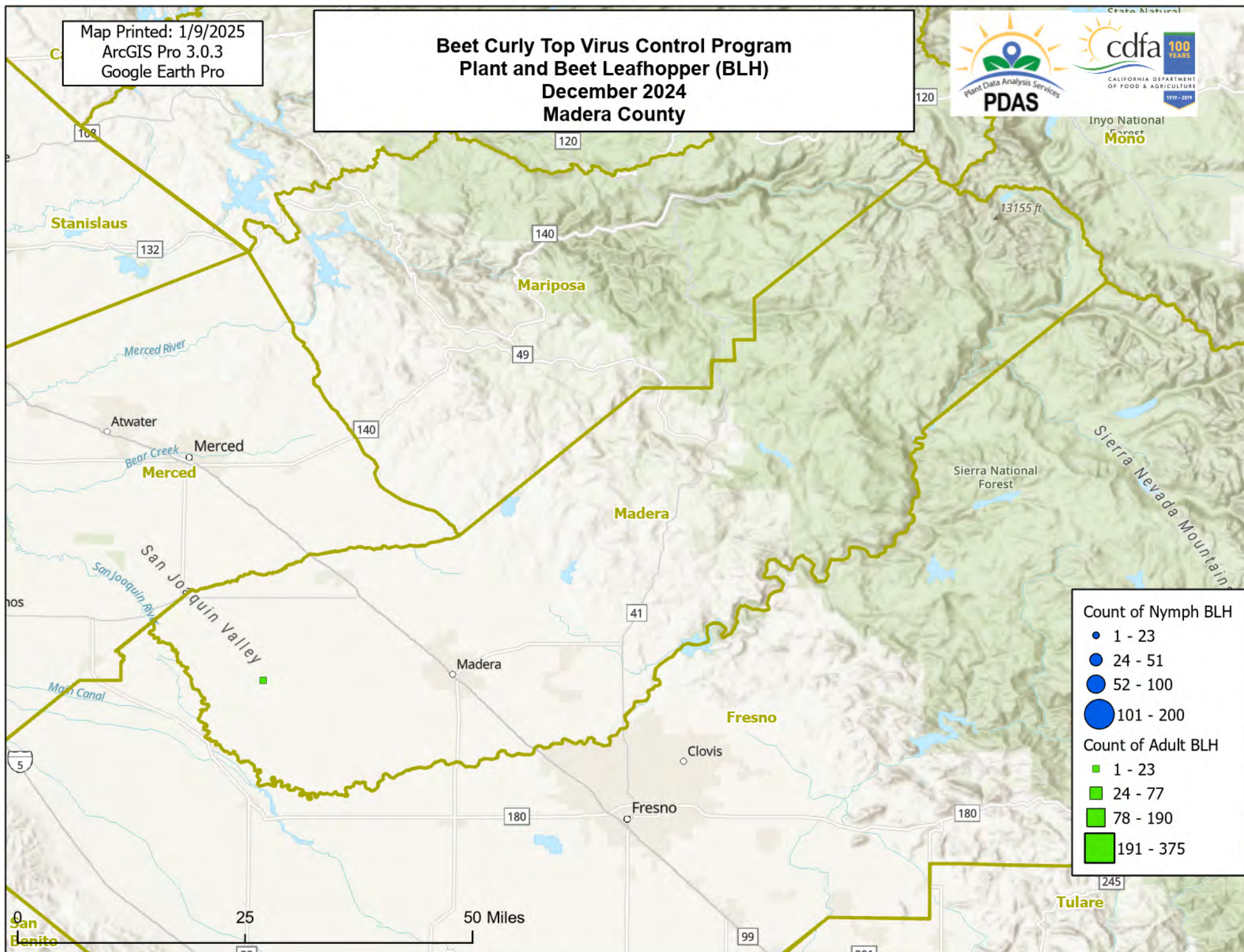
- 1 - 23
- 24 - 51
- 52 - 100
- 101 - 200

Count of Adult BLH

- 1 - 23
- 24 - 77
- 78 - 190
- 191 - 375

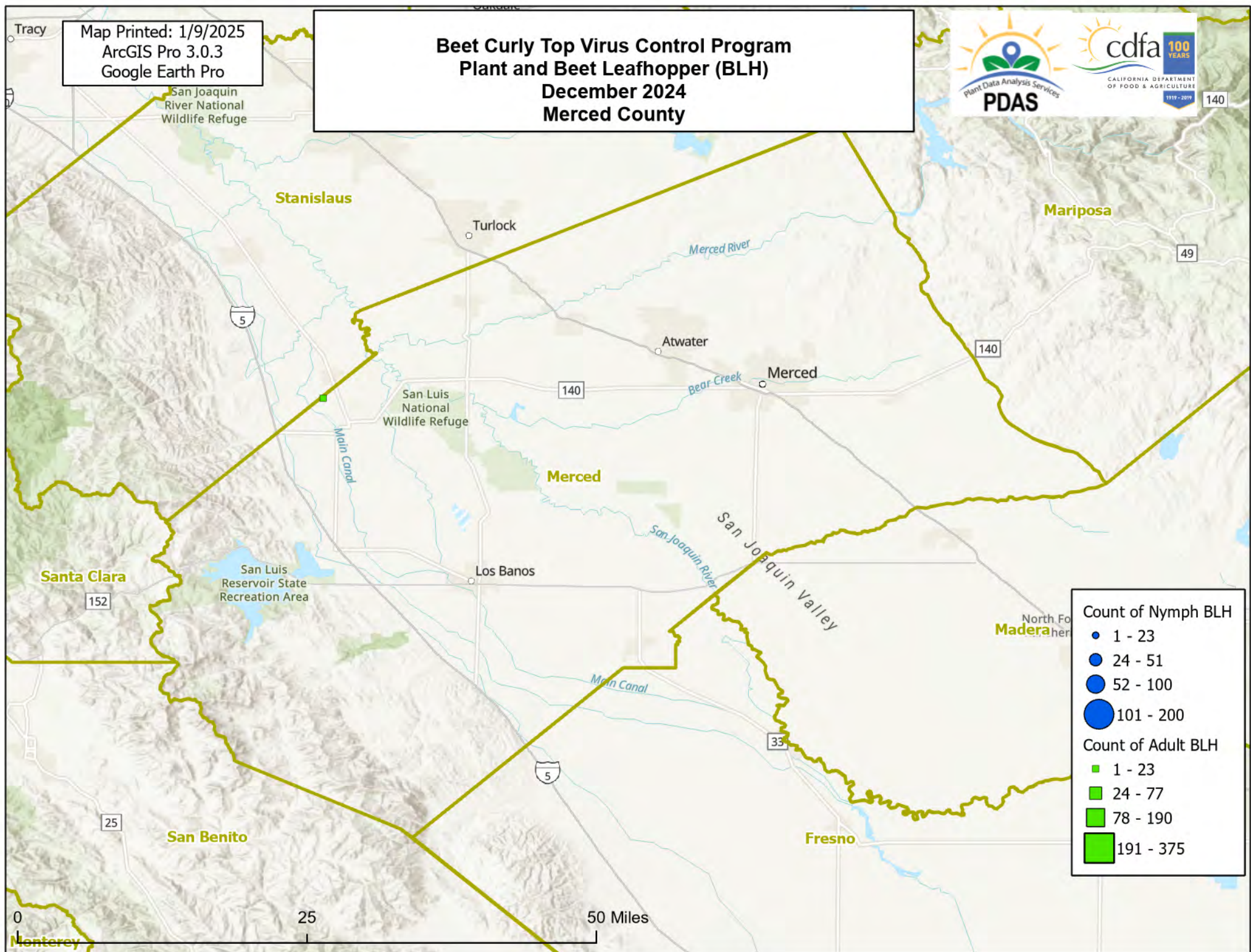
Map Printed: 1/9/2025
ArcGIS Pro 3.0.3
Google Earth Pro

Beet Curly Top Virus Control Program Plant and Beet Leafhopper (BLH) December 2024 Madera County



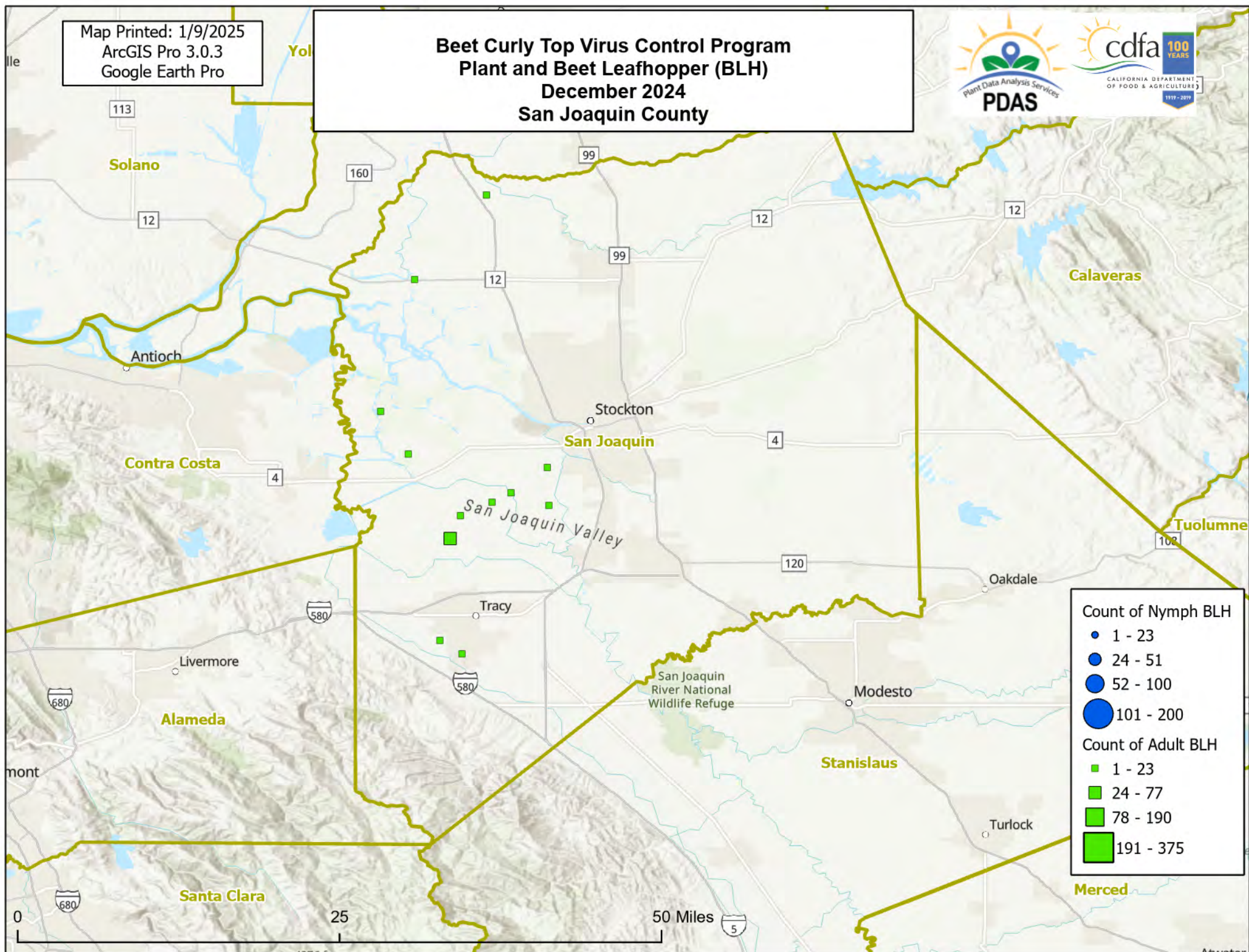
Map Printed: 1/9/2025
ArcGIS Pro 3.0.3
Google Earth Pro

Beet Curly Top Virus Control Program Plant and Beet Leafhopper (BLH) December 2024 Merced County



Map Printed: 1/9/2025
ArcGIS Pro 3.0.3
Google Earth Pro

Beet Curly Top Virus Control Program Plant and Beet Leafhopper (BLH) December 2024 San Joaquin County

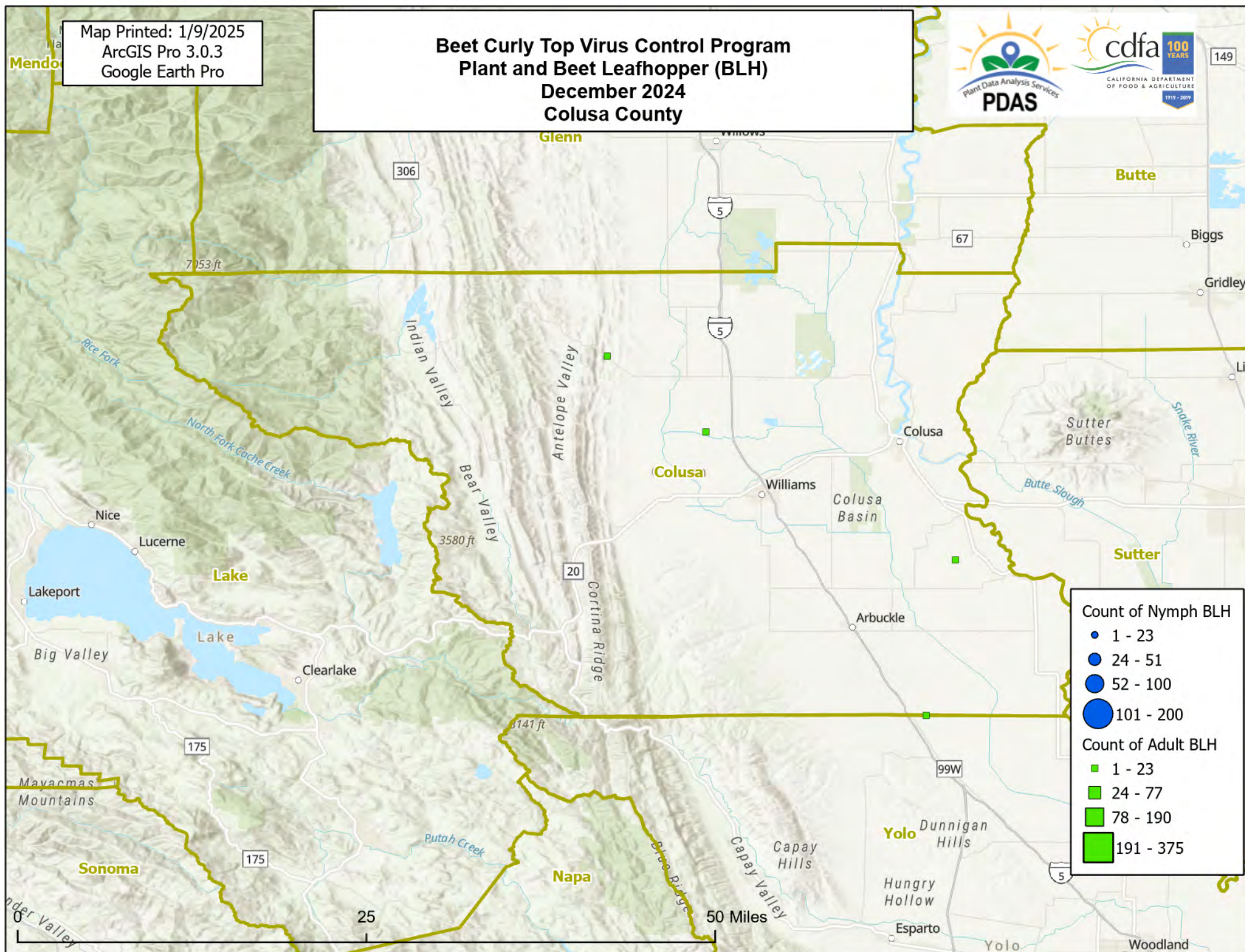


Map Printed: 1/9/2025
ArcGIS Pro 3.0.3
Google Earth Pro

Beet Curly Top Virus Control Program Plant and Beet Leafhopper (BLH) December 2024 Colusa County

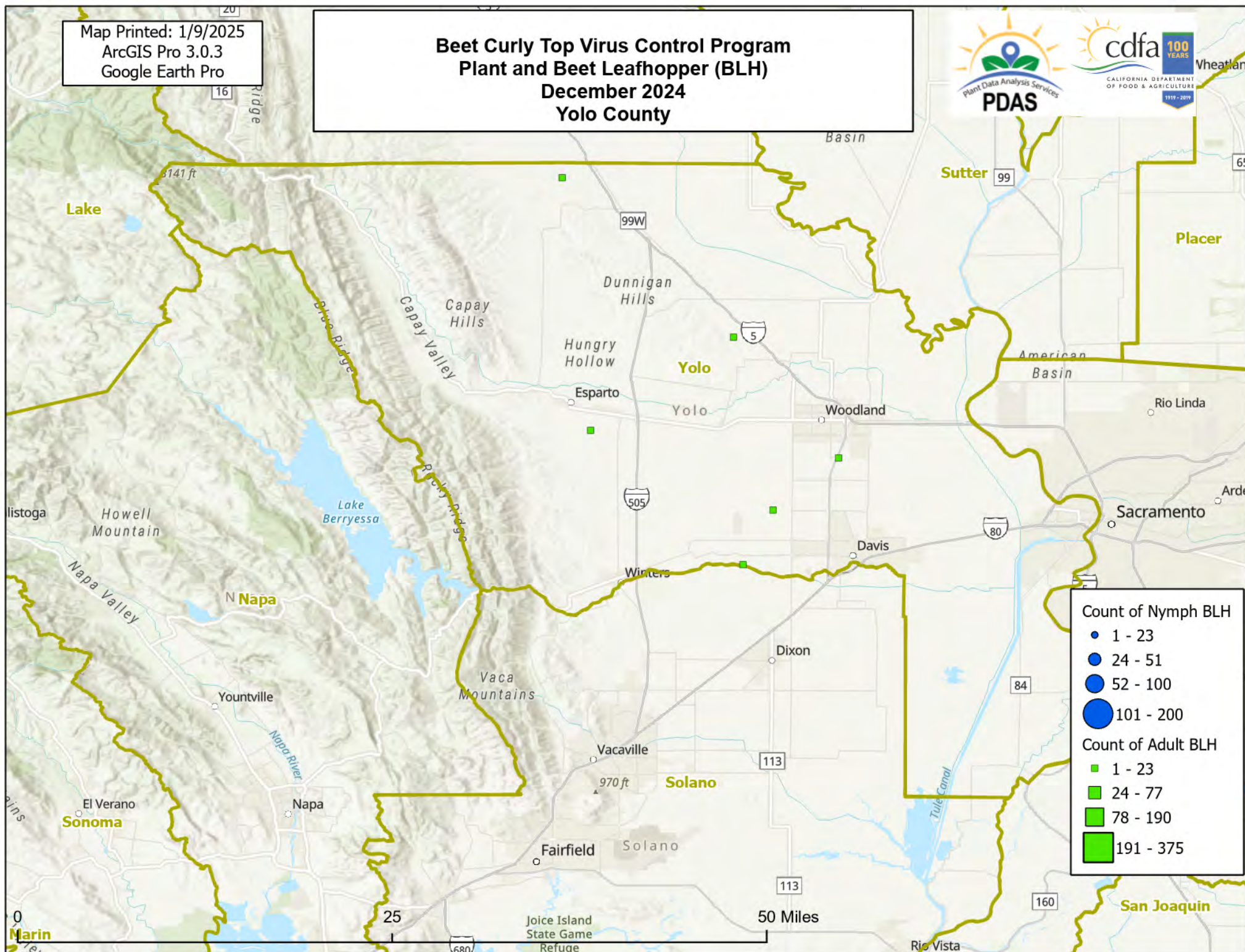
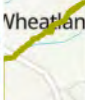


149



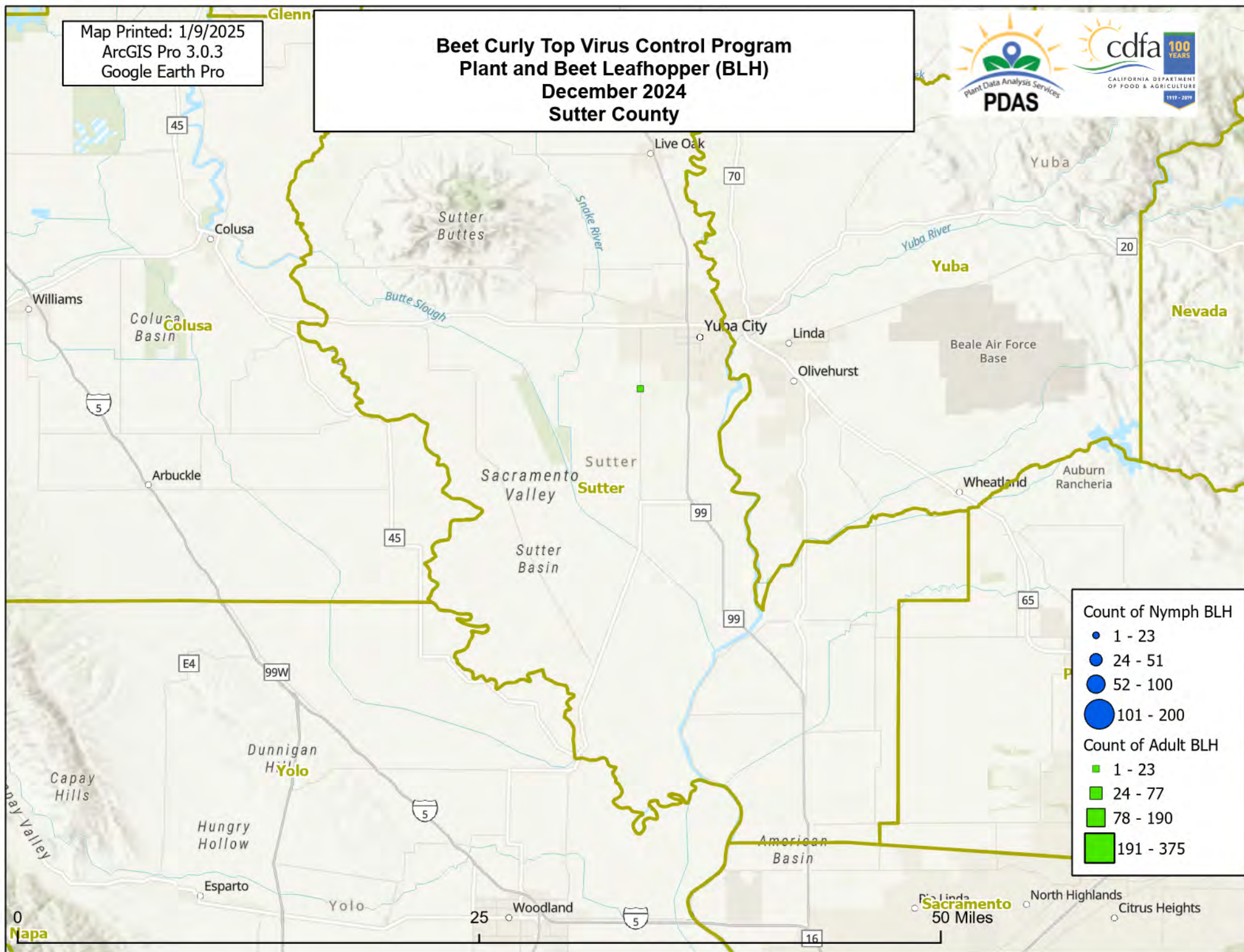
Map Printed: 1/9/2025
ArcGIS Pro 3.0.3
Google Earth Pro

Beet Curly Top Virus Control Program Plant and Beet Leafhopper (BLH) December 2024 Yolo County



Map Printed: 1/9/2025
ArcGIS Pro 3.0.3
Google Earth Pro

Beet Curly Top Virus Control Program Plant and Beet Leafhopper (BLH) December 2024 Sutter County



Map Printed: 1/9/2025
ArcGIS Pro 3.0.3
Google Earth Pro

Beet Curly Top Virus Control Program Plant and Beet Leafhopper (BLH) December 2024 Glenn County



Deer C

Tehama

Mendocino

Mendocino National Forest

Glenn

Butte

Chico

Willows

45

Lake

Coastal Range

Colusa

5

Colusa

Count of Nymph BLH

- 1 - 23
- 24 - 51
- 52 - 100
- 101 - 200

Count of Adult BLH

- 1 - 23
- 24 - 77
- 78 - 190
- 191 - 375

25

50 Miles

20

20

Map Printed: 1/9/2025
ArcGIS Pro 3.0.3
Google Earth Pro

Beet Curly Top Virus Control Program Plant and Beet Leafhopper (BLH) December 2024 Butte County



National

Sacramento
River National
Wildlife Refuge

Tehama

Deer Creek

32

70

Plumas

Paradise

Chico

Butte

Lake Oroville
State
Recreation Area

Middle Fork Feather River

Glenn

Willows

45

162

70

Colusa

Colusa

25

Sutter

Live Oak

Yuba

South Yuba
River State Park

Grass Valley

Placer

Count of Nymph BLH

- 1 - 23
- 24 - 51
- 52 - 100
- 101 - 200

Count of Adult BLH

- 1 - 23
- 24 - 77
- 78 - 190
- 191 - 375

0

50 Miles

5

20

Map Printed: 1/9/2025
ArcGIS Pro 3.0.3
Google Earth Pro

Beet Curly Top Virus Control Program Plant and Beet Leafhopper (BLH) December 2024 Solano County

