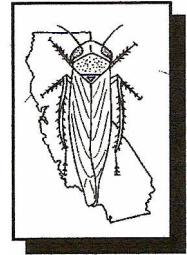


Beet Curly Top Virus Control Program

Monthly Report

California Department of Food and Agriculture
Plant Health and Pest Prevention Services
Integrated Pest Control Branch
2895 N. Larkin Ave, Suite A
Fresno, CA 93727
Phone: (559) 294-2031
Fax: (559) 294-2037



February 2023

Program Update

- In February, Beet Curly Top Virus Control Program (BCTVCP) personnel monitored vegetation development in the foothills on the westside of the San Joaquin and Sacramento Valleys in Fresno, Glenn, Kern, Kings, and Merced Counties.
- February was cold and rainy, leading to further development of winter grasses in many BLH overwintering areas. Areas of ideal BLH host vegetation were limited throughout February.
- BLH counts remained very low or not present in most survey areas (0-1 BLH per sweep), and no nymphs were observed in any of the survey areas in February. Additionally, non-target insect activity was very low throughout all survey areas.
- Please visit the Program's webpage to view Program reports and alerts. https://www.cdfa.ca.gov/plant/ipc/curlytopvirus/ctv_hp.htm
- The BCTVCP has deployed a Beet Leafhopper Sighting Report that industry can use to report BLH or CTV incidence in the field. This report is available using the following web browser link: <https://arcg.is/O9LyK> or by downloading the ArcGIS Survey123 app from the Google Play Store or Apple App Store and using the QR code below. A user guide for the BLH Sighting Report is available on the BCTVCP webpage.



- For program inquiries or questions regarding this report, please contact Lauren Murphy at lauren.murphy@cdfa.ca.gov or (559) 907-4460.

2023 Beet Curly Top Virus Sample Results

January 2023 - BCTV Sample Results by County	
	<u>Fresno</u>
Positive BLH	1
Negative BLH	2
Positive Host Plant	0
Negative Host Plant	3

February 2023 - BCTV Sample Results by County					
	<u>Fresno</u>	<u>Kings</u>	<u>Kern</u>	<u>Merced</u>	<u>Glenn</u>
Positive BLH	6	1	-	-	-
Negative BLH	0	0	-	-	-
Awaiting Results BLH	1	0	3	-	1
Positive Host Plant	1	0	-	0	-
Negative Host Plant	20	4	-	2	-
Awaiting Results Host Plant	27	6	-	0	5

County Reports

Fresno County

- BLH population surveys were conducted in the overwintering foothills as well as in fallow fields and roadsides within five miles of the foothills.
- Overall counts remained very low. However, there was an area in the foothills, located northwest of Panoche Junction, that had average counts of 7-9 BLH per set.
- Maps identifying locations of BLH counts are provided at the end of this report.

Fresno County BLH Surveys		
<u>Location</u>	<u>Date</u>	<u>Average # BLH per 10 sweeps</u>
Domegine	1-Feb	0.11 BLH
Big C	2-Feb	0.03 BLH
Fallow Fields near Panoche Creek	6-Feb	0.36 BLH
North of Panoche Creek	7-Feb	1.10 BLH
Gypsum Pits	8-Feb	0.20 BLH
Jacalitos	8-Feb	0.02 BLH
Los Gatos	8-Feb	0.20 BLH
Zapato	9-Feb	0.18 BLH
Fallow Fields near Five Points	13-Feb	0.03 BLH
Fallow Fields near Coalinga	13-Feb	0.02 BLH
Tumey Hills	14-Feb	0.02 BLH
Cantua Creek	15-Feb	0 BLH
South of Kamm	15-Feb	0.10 BLH
North of Kamm	15-Feb	0.67 BLH
Warthan	15-Feb	0 BLH
Coalinga Nose	15-Feb	0 BLH
Fallow Fields near Coalinga	21-Feb	0 BLH
Staircase	21-Feb	0.10 BLH
Fallow Fields near Oro Loma	22-Feb	0 BLH
Big C	22-Feb	0 BLH
Los Gatos	22-Feb	0 BLH

Glenn County

- BLH population surveys were conducted in fallow fields and roadsides containing BLH host vegetation, primarily filaree, mallow, and London rocket.
- Overall counts remained very low throughout the survey areas, averaging 0-1 BLH per sweep set.

Glenn County BLH Surveys		
<u>Location</u>	<u>Date</u>	<u>Average # BLH per 10 sweeps</u>
Williams	22-Feb	1.6 BLH
Willows	23-Feb	0 BLH

Kern County

- BLH population surveys were conducted in the overwintering foothills as well as in fallow fields and roadsides within five miles of the foothills.
- Overall counts remained very low throughout the survey areas, averaging 0-1 BLH per sweep set.
- Maps identifying locations of BLH counts are provided at the end of this report.

Kern County BLH Surveys		
<u>Location</u>	<u>Date</u>	<u>Average # BLH per 10 sweeps</u>
36 Hills	1-Feb	0.10 BLH
Triple 5's	1-Feb	0 BLH
West Buena Vista Hills	1-Feb	0 BLH
West Buena Vista Hills	6-Feb	0 BLH
South Lake	7-Feb	0 BLH
Elk Hills	7-Feb	0 BLH
Elk Hills	13-Feb	0.05 BLH
Triple 5's	14-Feb	0 BLH
Shooting Range	14-Feb	0 BLH
Valley Acre Flats	14-Feb	0 BLH
Elk Horn	21-Feb	0.13 BLH
Western Mineral	21-Feb	1.70 BLH

Kings County

- BLH population surveys were conducted in the overwintering foothills as well as in fallow fields and roadsides within five miles of the foothills.
- Overall counts remained very low throughout the survey areas, averaging 0-1 BLH per sweep set.
- Maps identifying locations of BLH counts are provided at the end of this report.

Kings County BLH Surveys		
<u>Location</u>	<u>Date</u>	<u>Average # BLH per 10 sweeps</u>
Kettleman Hills north of Hwy 41	6-Feb	0.13 BLH
North Tip of Kettleman Hills	6-Feb	0 BLH
Kettleman Hills north of Hwy 41	7-Feb	0.15 BLH
Fallow Fields along Utica Ave	13-Feb	0 BLH
Kettleman Hills south of Hwy 41	14-Feb	0 BLH
Fallow Field west of Hwy 33	14-Feb	0 BLH

Merced County

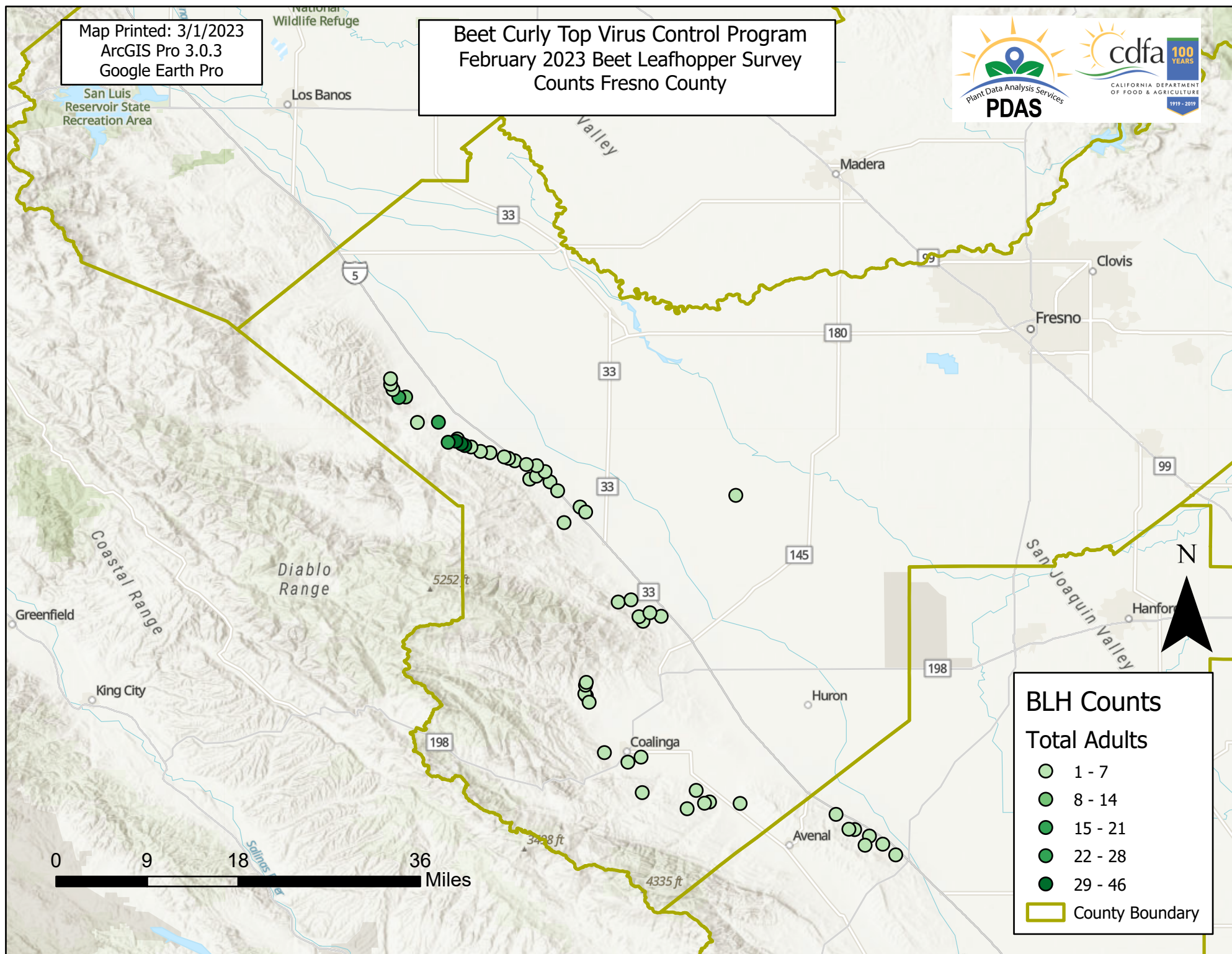
- BLH population surveys were conducted on February 1st in roadsides within five miles of the foothills.
- Host vegetation surveyed included filaree and emerging peppergrass.
- No BLH were observed during surveys in Merced County.

To subscribe to the BCTV monthly report, updates, and alerts, please use the link below:

www.cdfa.ca.gov/subscriptions/

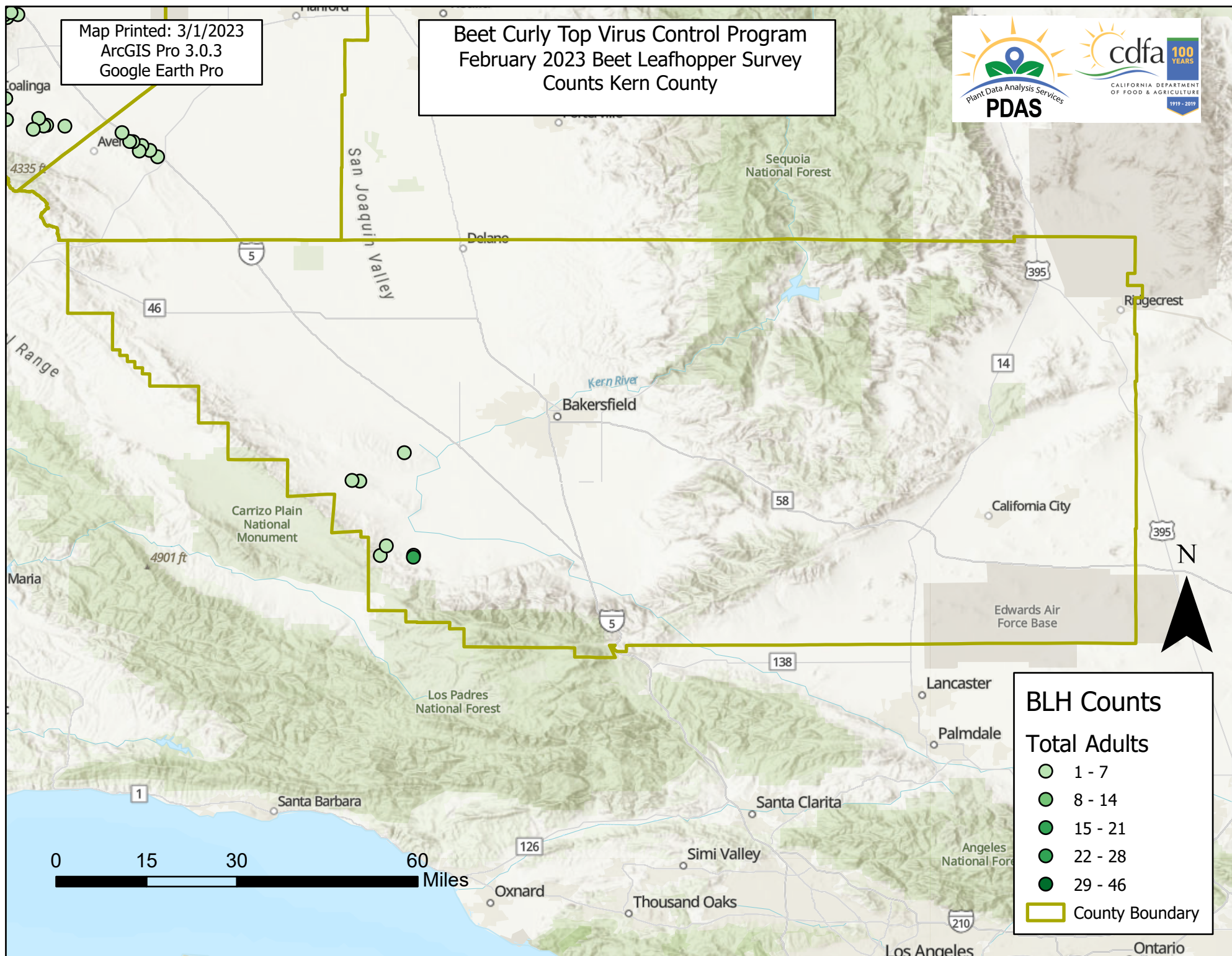
Map Printed: 3/1/2023
ArcGIS Pro 3.0.3
Google Earth Pro

Beet Curly Top Virus Control Program February 2023 Beet Leafhopper Survey Counts Fresno County



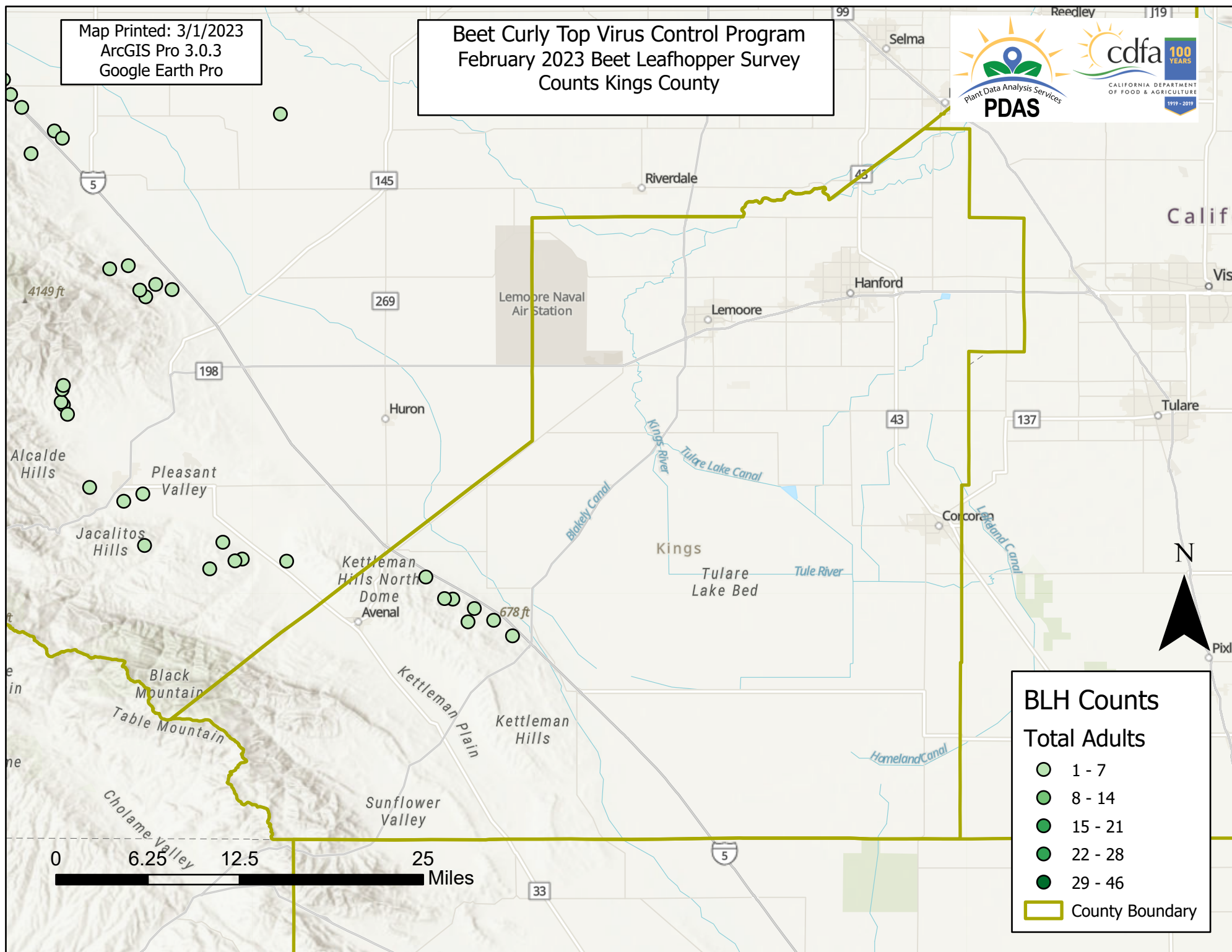
Map Printed: 3/1/2023
ArcGIS Pro 3.0.3
Google Earth Pro

Beet Curly Top Virus Control Program February 2023 Beet Leafhopper Survey Counts Kern County



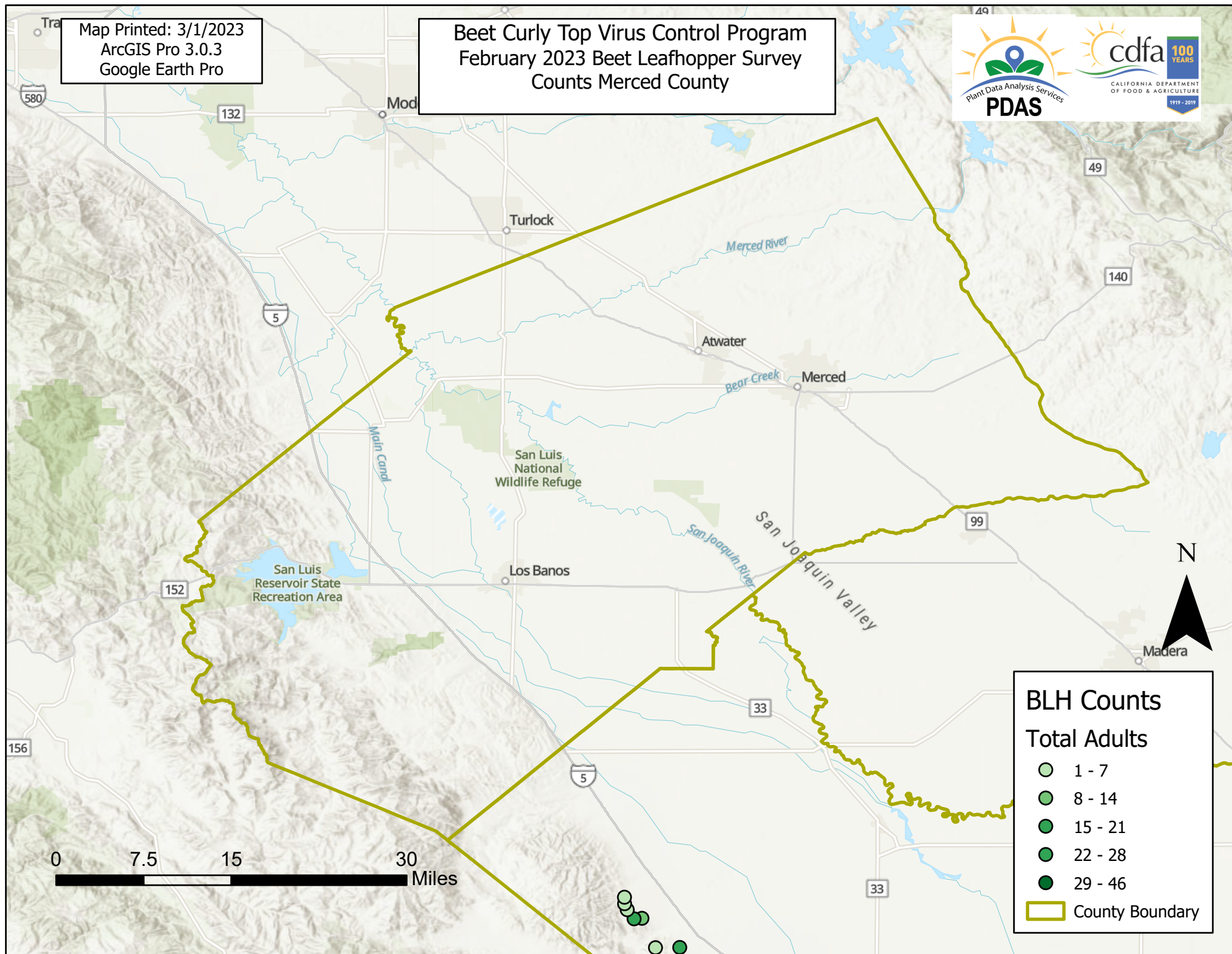
Map Printed: 3/1/2023
ArcGIS Pro 3.0.3
Google Earth Pro

Beet Curly Top Virus Control Program February 2023 Beet Leafhopper Survey Counts Kings County



Map Printed: 3/1/2023
ArcGIS Pro 3.0.3
Google Earth Pro

Beet Curly Top Virus Control Program February 2023 Beet Leafhopper Survey Counts Merced County



BLH Counts

Total Adults

- 1 - 7
- 8 - 14
- 15 - 21
- 22 - 28
- 29 - 46

County Boundary