

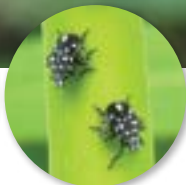
# Keep Spotted Lanternfly Out of California



LIFE STAGES OF THE SPOTTED LANTERNFLY  
(*Lycorma delicatula*)



**Egg Mass**  
Year-round



**Early Nymph**  
Spring - Summer



**Late Nymph**  
Summer - Fall



**Adult**  
Summer - Winter

## SPOT THE SPOTTED LANTERNFLY?

**CDFA Pest Hotline:**  
**1-800-491-1899**

**Report online:**  
[cdfa.ca.gov/plant/reportapest/](https://cdfa.ca.gov/plant/reportapest/)



*Snag it. Snap it. Report it.*



CALIFORNIA DEPARTMENT OF  
FOOD & AGRICULTURE