

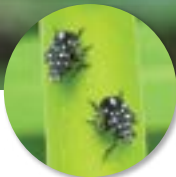
Keep Spotted Lanternfly Out of California



LIFE STAGES OF THE SPOTTED LANTERNFLY
(*Lycorma delicatula*)



Egg Mass
Year-round



Early Nymph
Spring - Summer



Late Nymph
Summer - Fall



Adult
Summer - Winter

SPOT THE SPOTTED LANTERNFLY?

CDFA Pest Hotline:

1-800-491-1899

Report online:

cdfa.ca.gov/plant/reportapest/



Snag it. Snap it. Report it.



CALIFORNIA DEPARTMENT OF
FOOD & AGRICULTURE