



QUARTERLY FEED UPDATE

Issue 10 | Spring 2022

In This Issue

2021 Feed Sampling
Summary

Webpage Updates

Annual CGFA
Convention

Human Food By-
Product Diversion
Outreach Visits

Avian Influenza
Update

Upcoming Public
Meetings

Update on Human
Food By-Product
Regulations

Calendar

April 30, 2022
2022 Quarter 1
Tonnage Tax Due

May 30, 2022
Memorial Day

2021 Feed Sampling Summary

The Commercial Feed Regulatory Program (CFRP) has finalized its 2021 sampling data. Amid continued challenges to everyday operations due to the pandemic and inspector vacancies, CFRP inspectors collected a total of 672 commercial feed samples in 2021. Of the 672 total samples, 617 were obtained as part of CFRP's routine sampling plan. The remaining 55 samples were obtained for investigative purposes, including mixer studies, flush verifications, Safe Animal Feed Education (SAFE) Program research, complaints, etc. CFRP met its sampling plan goal of obtaining 70% of samples for food safety reasons and 30% for label compliance. Food safety analyses performed include selenium concentration, mycotoxin screens, heavy metal screens, medicated feed, and vitamin/mineral nutrient concentration.

2021 Sample Types	Number	Percentage
Food Safety	473	70%
Label Compliance	199	30%
Total	672	100%
Violative Samples	162	26%*

**of official samples only*

2021 Food Safety Analyses



- Heavy Metal Screens, 8%
- Mycotoxin Screens, 25%
- Selenium, 27%
- Medicated Feed, 22%
- Other Vitamins/Minerals, 18%

See **Sampling** on page 2

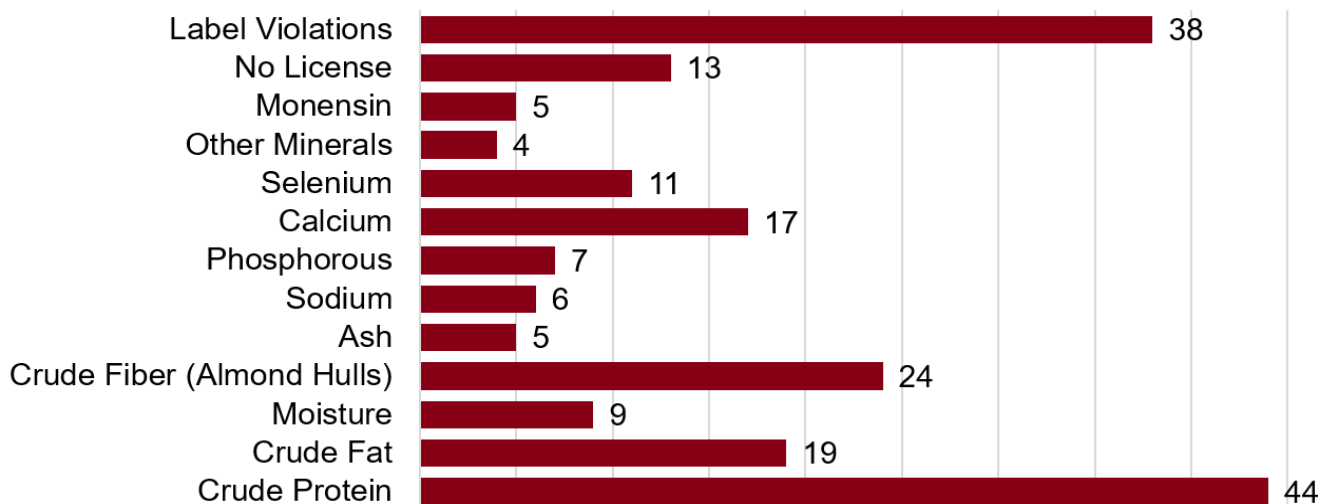
QUARTERLY FEED UPDATE

Issue 10 | Spring 2022

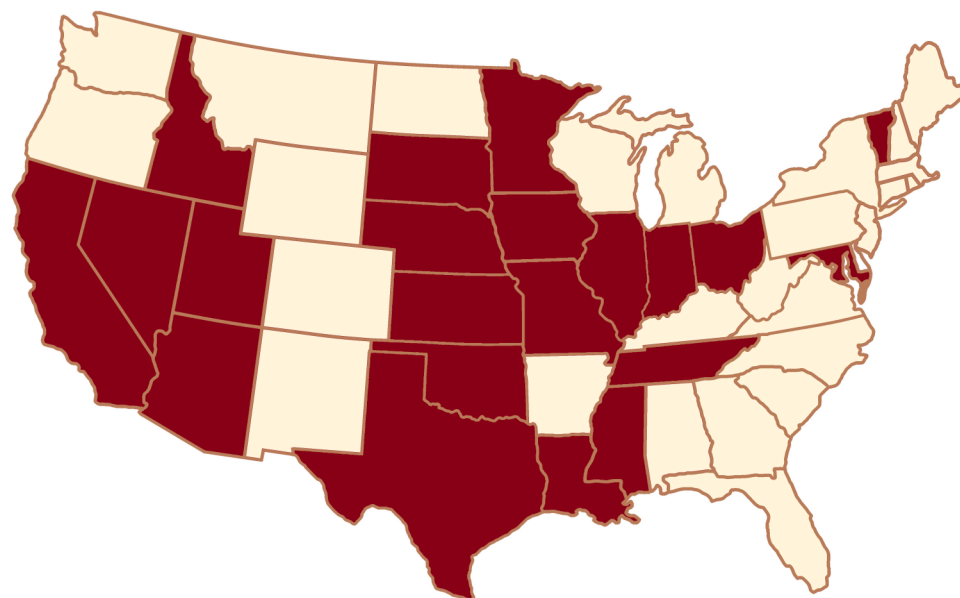
Sampling, from page 1

There were 162 samples with one or more associated violations (26% of official samples obtained), with crude protein and label violations being the most prevalent issues. There were 202 individual violations issued, with some samples receiving multiple violations. Common label violations included California Code of Regulations Title 3, Sections 2694, 2701, and 2697 and Food and Agricultural Code Sections 14991 and 14992.

2021 Violation Types



2021 Sample Origins



Arizona	Nevada
California	Ohio
Idaho	Oklahoma
Illinois	South Dakota
Indiana	Tennessee
Iowa	Texas
Kansas	Utah
Louisiana	Vermont
Maryland	
Minnesota	<u>International:</u>
Mississippi	Canada
Missouri	Mexico
Nebraska	Taiwan

QUARTERLY FEED UPDATE

Issue 10 | Spring 2022

Webpage Updates

The Commercial Feed Regulatory Program (CFRP), Safe Animal Feed Education (SAFE) Program, and Livestock Drug Program are currently revamping all webpages.

Updates to the [CFRP webpage](#) include:

- Updated layout and streamlined organization
- Easy access to the ExtraView Database
- Archive of [Quarterly Feed Update Newsletters](#) and [Notices to Industry](#)
- Easy to find contact information for all CFRP staff

The [SAFE webpage](#) has been updated with new and revised educational resources, including:

- [Medicated Feed Label Guide](#)
- [How to Start a Food Safety Plan](#)
- [Hazard Analysis Rubric](#)

Additional updates will be made to the SAFE and Livestock Drug Program webpages in the coming weeks.



A preview of the new and improved CFRP webpage.

Annual CGFA Convention

The California Grain and Feed Association (CGFA) will host its 98th annual convention on April 26-29, 2022, in Indian Wells, California.

Jenna Leal, manager of the Commercial Feed Regulatory Program (CFRP), will give a presentation on April 27 about CFRP's continued feed safety research and ongoing efforts to incentivize human food by-product diversion to livestock feed.

For more information about the convention, please visit <http://www.cgfa.org/convention/>.



QUARTERLY FEED UPDATE

Issue 10 | Spring 2022

Human Food By-Product Diversion Outreach Visits

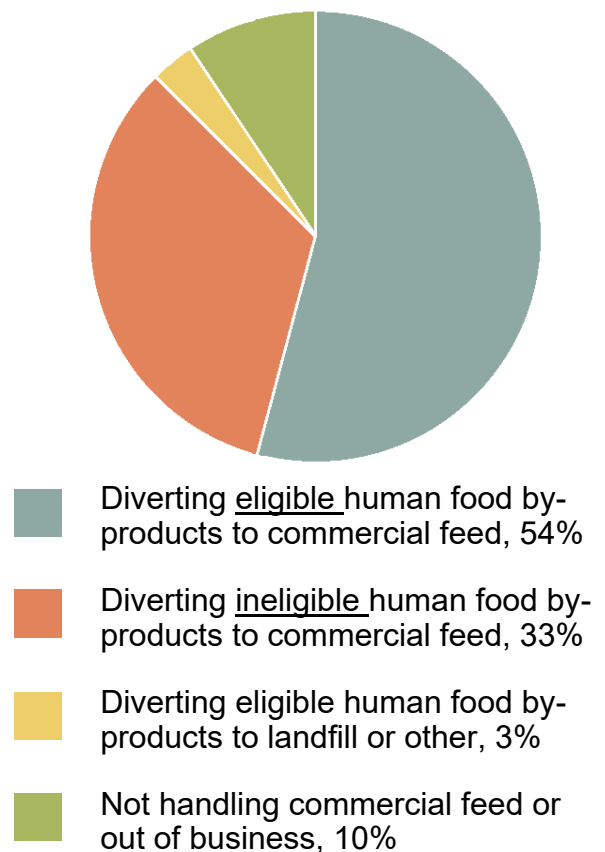
The Safe Animal Feed Education (SAFE) Program collaborated with Commercial Feed Regulatory Program (CFRP) field staff to complete an initial phase of outreach at commercial feed licensees previously identified as diverting human food by-products to commercial feed. Of the 96 firms visited, 84 firms were found to be diverting human food by-products to commercial feed. Three firms were diverting human food by-products to landfills or industries other than commercial feed. The remaining nine firms were either not handling any commercial feed or out of business.

Of the 84 firms diverting human food by-products to commercial feed, 52 firms were found to be diverting human food by-products that may be eligible for CFRP's proposed tonnage tax incentives. The most common eligible human food by-products surveyed include cull fruits and vegetables, whey/dairy by-products (liquid), wet fruit/vegetable pomace/pulp, wet food processing waste, brewer's wet grains, recovered retail food and dried bakery product.

The remaining 32 firms were found to be diverting human food by-products that would not be eligible for CFRP's proposed tonnage tax incentives. The most common ineligible human food by-products surveyed include dried milk products, grape pomace, and grain by-products such as rice bran and wheat millrun.

In the future, CFRP hopes to conduct outreach to encourage more facilities to become licensed with the program and begin diverting safe and wholesome by-products to commercial feed. Learn more about human food by-product diversion to commercial feed by visiting our [Human Food Waste Diversion webpage](#).

**Human Food By Products
Surveyed in CFRP Visits**



QUARTERLY FEED UPDATE

Issue 10 | Spring 2022

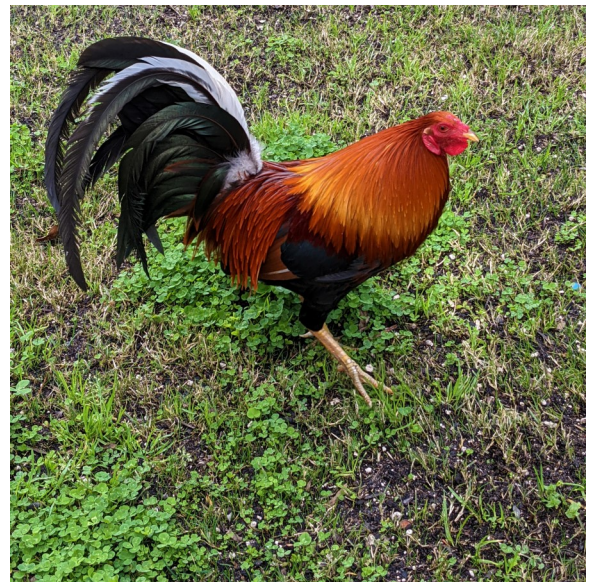
Avian Influenza Update

In an effort to prevent highly pathogenic avian influenza from entering California, State Veterinarian Dr. Annette Jones has imposed a [quarantine and additional entry requirements](#) on all live poultry, hatching eggs, and poultry products entering California from [areas with confirmed outbreaks](#). The Animal Health Branch has created an [infographic](#) summarizing quarantine and permit requirements.

Avian influenza, commonly called bird flu, is a disease found in some populations of wild waterfowl that can infect chickens, turkeys, pheasants, quail, ducks, geese, and guinea fowl, as well as a wide variety of other domesticated and wild birds. When avian influenza is introduced into domestic avian populations, it can spread quickly through domestic bird-to-bird contact or through contact with contaminated people, feed or equipment.

For more information, please visit the Animal Health Branch's [Avian Influenza webpage](#).

**To report sick or dead birds,
call the Sick Bird Hotline:
866-922-BIRD (2473)**



Upcoming Public Meetings

The Feed Inspection Advisory Board (FIAB) meets several times each year to make recommendations on all matters pertaining to the Commercial Feed Regulatory Program (CFRP), including inspection, enforcement, budget, fees, and regulations. The Technical Advisory Subcommittee (TASC) advises the FIAB on feed/food safety issues and research projects funded by the Safe Animal Feed Education (SAFE) Program. All FIAB and TASC meetings are public meetings; upcoming meeting dates are listed below. An agenda and meeting materials will be posted to the Inspection Services Division's [meetings webpage](#) 10 days prior to the scheduled meeting date.

April 13, 2022 - Feed Inspection Advisory Board Meeting

QUARTERLY FEED UPDATE

Issue 10 | Spring 2022

Update on Human Food By-Product Regulations

The Commercial Feed Regulatory Program (CFRP) is excited to announce changes to Title 3 of the California Code of Regulations (3 CCR) became effective March 29, 2022. CFRP collaborated with the feed industry to develop incentives for firms diverting eligible human food by-products to commercial feed. Diversion helps ensure safe and suitable by-products do not go to waste in landfills and are instead upcycled to provide a healthy and nutritious diet for California livestock. Diversion is also an important way the feed industry helps contribute to greenhouse gas reduction efforts.

An overview of the incentives is provided to the right; the full text of the regulations and a copy of the final statement of reasons is available on the Inspection Services [Division's regulations webpage](#). CFRP will be releasing additional outreach materials about the new incentives in the coming weeks.

3 CCR Section 2750(e):

Reduced Tonnage Tax

\$0 tax on the first 1,000 tons of eligible human food by-products,
\$0.05/ton on eligible human food by-products over 1,000 tons

3 CCR Section 2751(c):

Reduced License Fee

\$100 for firms solely diverting eligible human food by-products

3 CCR Section 2804:

Eligible Human Food By-Products

Wet Food Processing Waste,
Restaurant Food Waste,
Recovered Retail Food,
Cull Fruit or Vegetables, Wet Apple Pomace,
Wet Beet Pulp, Brewers Wet Grains,
Condensed Whey-Product, Whey,
Condensed Whey Permeate,
Condensed Delactosed Whey Permeate,
Dairy Food By-Products, Wet Citrus Pulp,
Cereal Food Fines, and Dried Bakery Product

Join our Email Lists

Join the Commercial Feed Regulatory Program (CFRP) and Safe Animal Feed Education (SAFE) Program email lists to stay current with industry updates and receive the Quarterly Feed Update delivered to your inbox. Sign up by visiting <https://www.cdfa.ca.gov/subscriptions/> or emailing feed_lvstk@cdfa.ca.gov and safe@cdfa.ca.gov

CONTACT US



CALIFORNIA DEPARTMENT OF FOOD AND AGRICULTURE
Feed, Fertilizer, and Livestock Drugs Regulatory Services Branch
Commercial Feed Regulatory Program
1220 N Street, Sacramento, CA 95814
Phone: (916) 900-5022 | Fax: (916) 900-5349
ffldrs@cdfa.ca.gov | <http://www.cdfa.ca.gov/is/ffldrs/>

PROGRAM MANAGEMENT

Jenna Leal, Program Manager
Jenna.Leal@cdfa.ca.gov
(916) 900-5022

Mike Davidson, Field Supervisor
Mike.Davidson@cdfa.ca.gov
(209) 649-3682

Rachelle Kennedy, Program Supervisor
Rachelle.Kennedy@cdfa.ca.gov
(916) 900-5022

PROGRAM STAFF

Ted Bert, Compliance Officer
Theodore.Bert@cdfa.ca.gov
(559) 246-0753

Valerie Brott, Lab Coordinator
Valerie.Brott@cdfa.ca.gov
(916) 900-5022

KC Gutenberger, SAFE Program
KC.Gutenberger@cdfa.ca.gov
(916) 214-6725

Ashley James, AUS/Contracts
Ashley.James@cdfa.ca.gov
(916) 900-5022

Erika Lewis-Ortega, Admin/Regulations
Erika.Lewis@cdfa.ca.gov
(916) 900-5022

Cathryn McCandless, SAFE Program
Cathryn.McCandless@cdfa.ca.gov
(916) 539-3395

Samantha Moran-Defty, Admin/Contracts
Samantha.Moran@cdfa.ca.gov
(530) 632-4618

Timothy Valles, Licensing/Tonnage
Timothy.Valles@cdfa.ca.gov
(916) 900-5022

For VFD submission questions, please email
cdfa.isd_aus_vfd@cdfa.ca.gov

FIELD STAFF

NORTHERN CALIFORNIA

Lindsey Smith, Environmental Scientist
Lindsey.Smith@cdfa.ca.gov
(916) 594-4649

SOUTHERN SACRAMENTO VALLEY

Jessica Lugo, Environmental Scientist
Jessica.Lugo@cdfa.ca.gov
(916) 214-6931

Cyril Huisman, Special Investigator
Cyril.Huisman@cdfa.ca.gov
(209) 649-3751

NORTHERN SAN JOAQUIN VALLEY

Killeen Sanders, Special Investigator
Killeen.Sanders@cdfa.ca.gov
(209) 403-2481

SOUTHERN SAN JOAQUIN VALLEY

Chris Hansen, Special Investigator
Chris.Hansen@cdfa.ca.gov
(559) 647-5721

Alejandro Ramirez, Environmental Scientist
Alejandro.Ramirez@cdfa.ca.gov
(559) 246-2180

Amber Hayter, Environmental Scientist
Amber.Hayter@cdfa.ca.gov
(916) 720-1349

SOUTHERN CALIFORNIA

Kelly Mammen, Environmental Scientist
Kelly.Mammen@cdfa.ca.gov
(760) 218-7826

Shelly King, Special Investigator
Shelly.King@cdfa.ca.gov
(714) 412-1217

[VIEW FIELD STAFF TERRITORY MAP](#)