

InAlliance

Building a More Livable Workable World



Overview

- ❖ Happy National Disability Employment Awareness Month!
- ❖ A little about InAlliance
- ❖ Employment Services
- ❖ Stories from Courtney and John

National Disability Employment Awareness Month

- What is it
- Brief History
- This year's theme

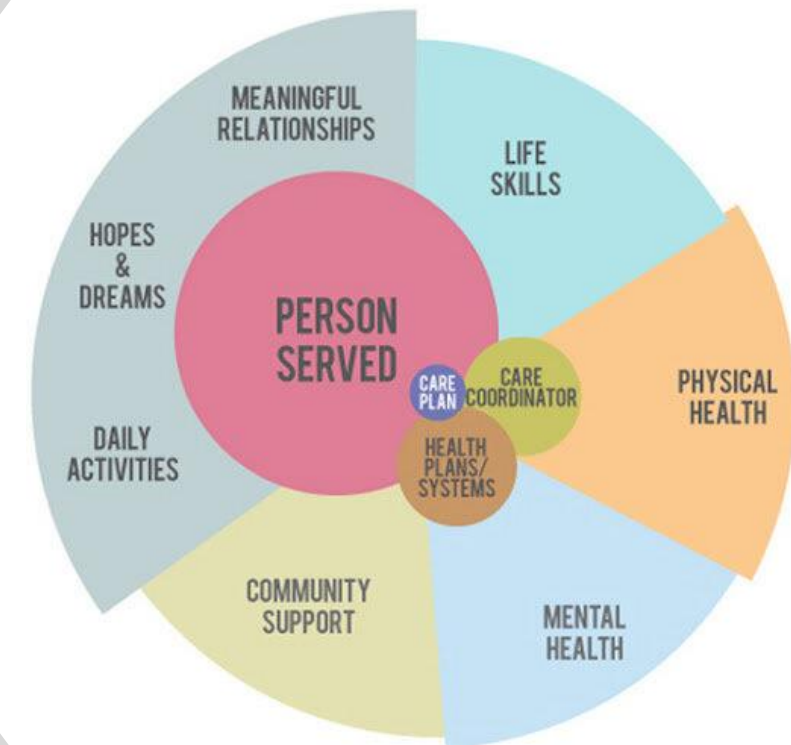


Mission Statement

InAlliance supports the belief that people with developmental disabilities have an absolute right and responsibility to participate fully and equally in society to maximize their quality of life.

A little about InAlliance

Person-Centered Approach



Who Where & How

We Serve:

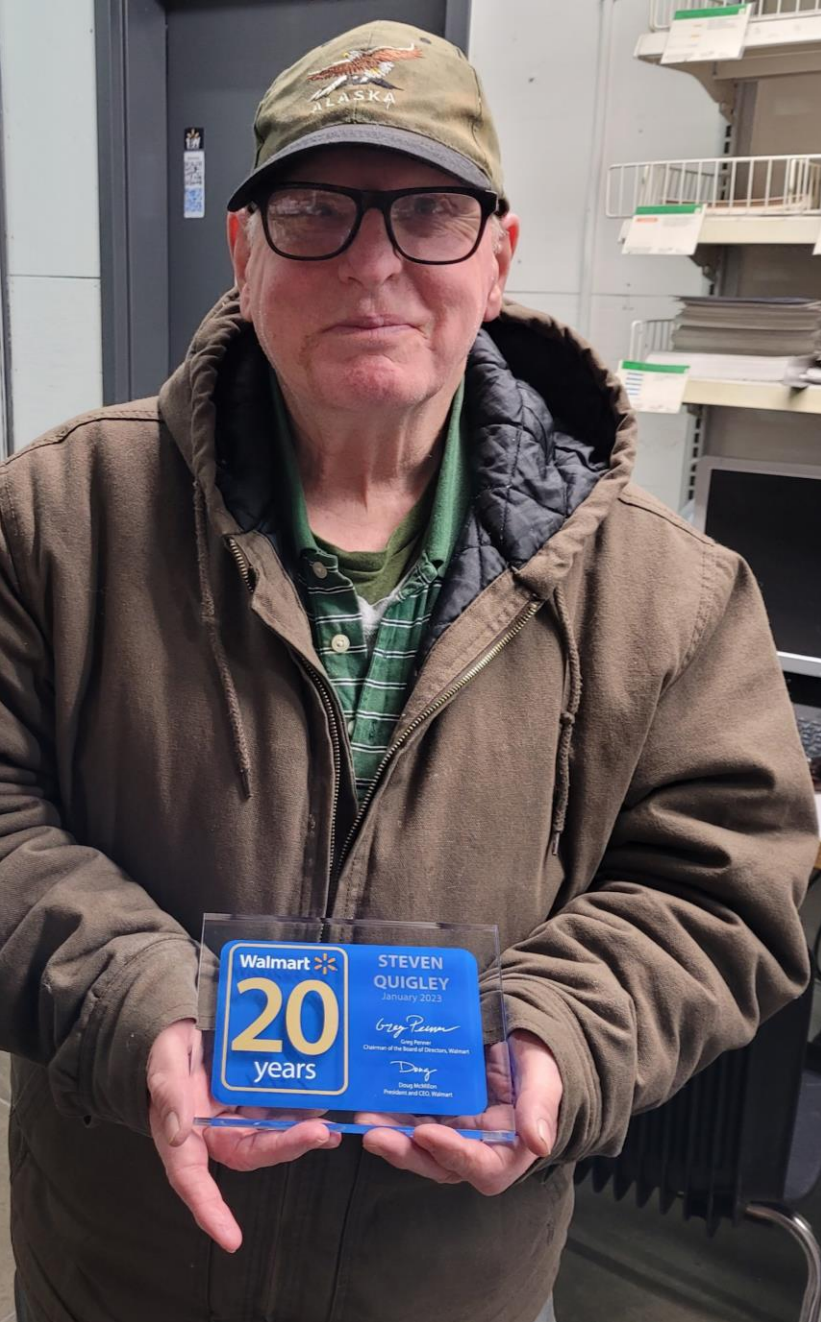
- Over 350 Adults
- Community-based
- 3 Offices
- In 7 Counties
- With over 250 DSPs

We are Funded by:

- Alta California Regional Center
- Department of Rehabilitation



Evolution from Seclusion...



To Inclusion !





Community Living Services

Independent Living Services

Supported Living Services

Day and Employment Services



Community Training Program

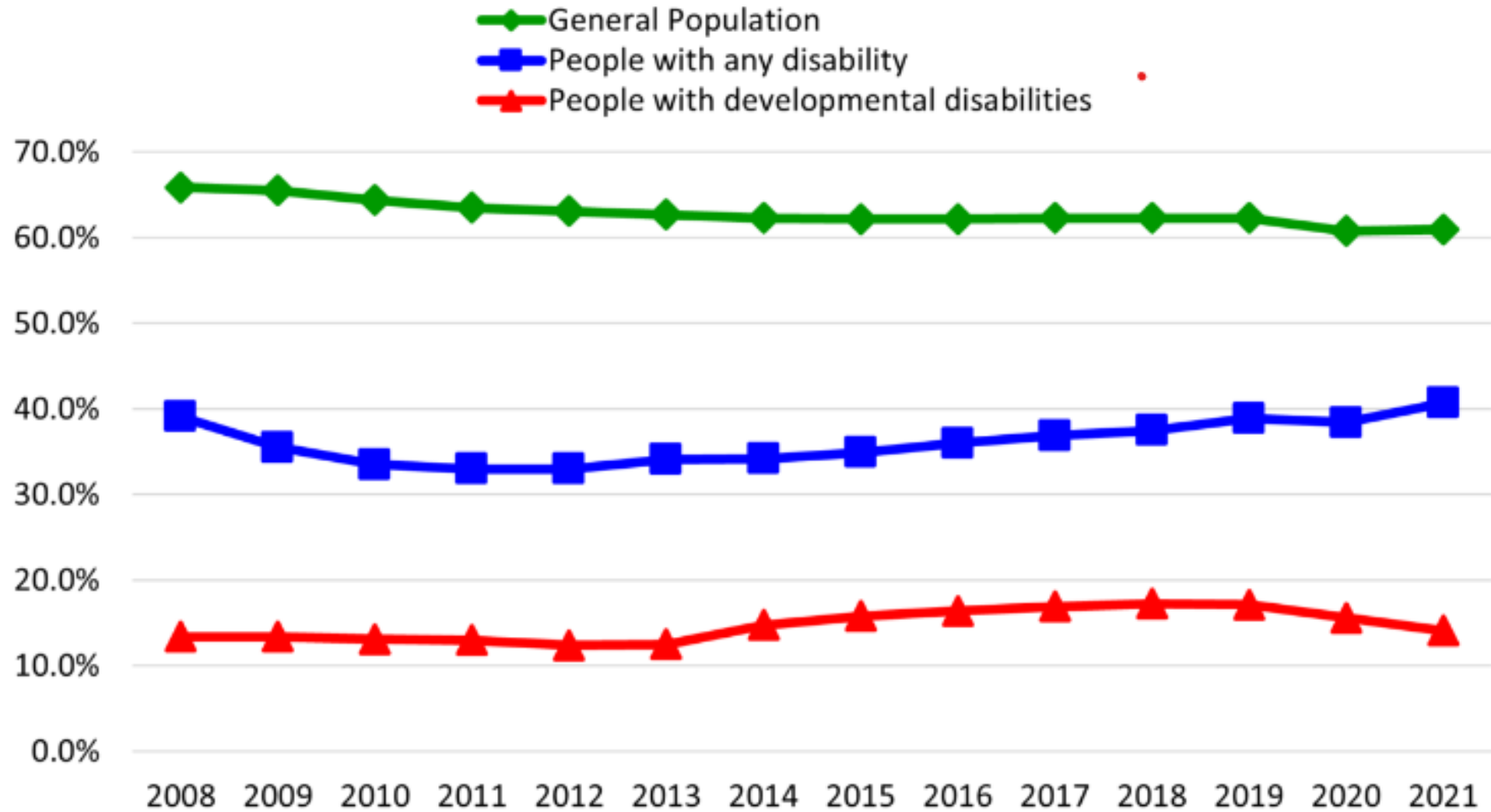


Work and Life Skills



Supported Employment


California Employment Rate





Employment Support Services

- Supported Employment
- Individualized Placement Supports
- Customized Employment



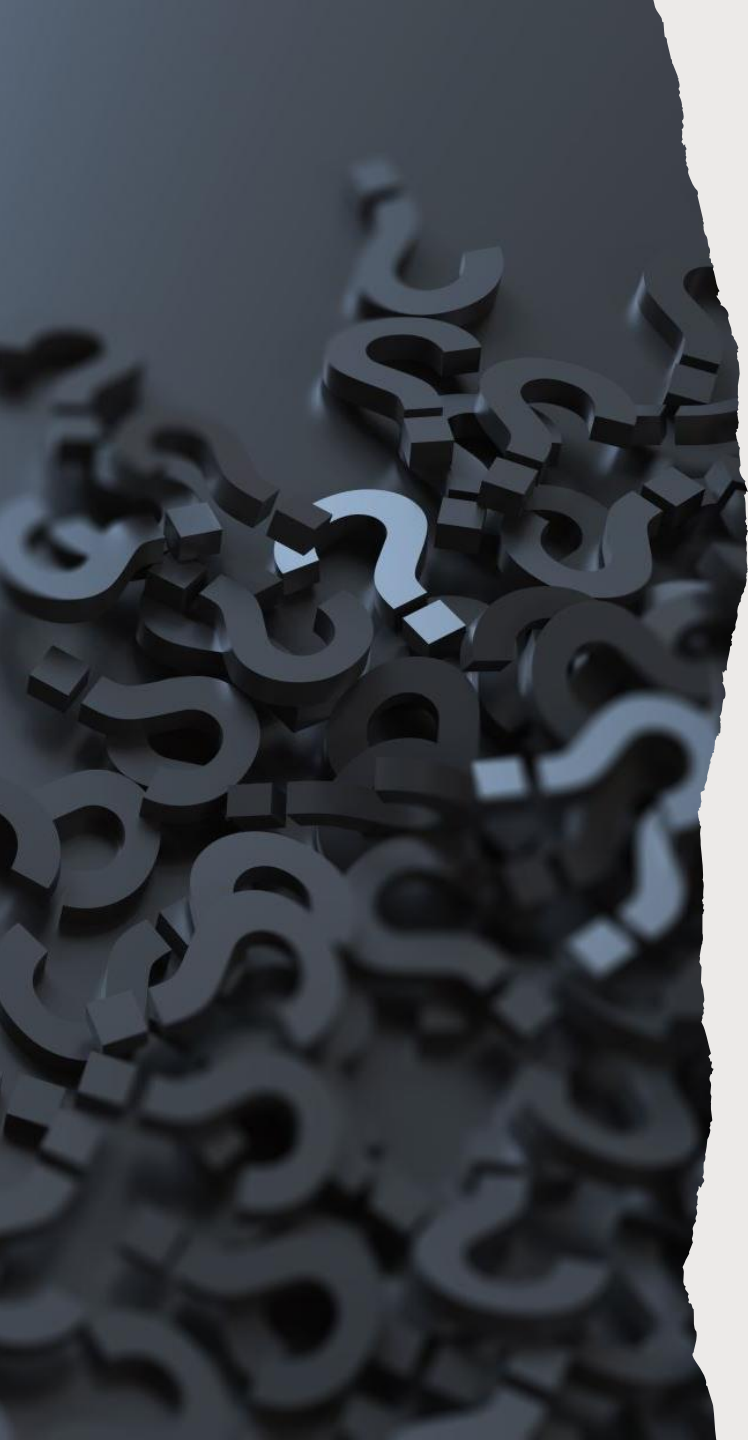
Let's see how this all
works...

Meet Courtney



Meet John





Questions?