

72

Percentage of calcium in the California food supply coming from dairy products

1914

Year the first tanker truck for transporting fluid milk was introduced

Percentage of whole milk that is water

88

1

California's rank in the U.S. in the production of milk, butter, nonfat dry milk, whey protein concentrate, and Mozzarella cheese

Number of gallons of milk consumed annually by each person living in California

25



2,136,779,281

Pounds of total cheese produced in California in 2005

\$13.93

Average dollars per hundredweight paid to California dairy producers for milk produced in 2005

6

Number of miles away that cows can smell an object, made possible by their acute sense of smell

California Dairy

Statistics & Trends

43

Number of slices of pizza consumed every second in California

Percentage of households that purchase milk

99

48

Percentage of milk produced in California used to make cheese

Average dairy herd size in California for 2005

860

Cash receipts (in billions) from farm marketings of dairy products in California 2005

2005

\$5.2

Year the first cheese plant in the U.S. was established, in Oneida County, New York

1851

349

Approximate number of squirts from a cows' udder in one gallon of milk

Every 5° degree rise in temperature (above 35-40°) shortens milk shelf-life by 50% because of bacteria growth

5

This publication was prepared in the
Division of Marketing Services, Dairy Marketing Branch, by:

Dairy Statistics Unit Staff:

Candace Gates, Research Manager
Karen Dapper, Research Program Specialist

In Cooperation With:

Dairy Marketing Branch's Economics, Manufacturing Cost,
and Cost of Production Units
Milk Pooling Branch

and the

U.S. Department of Agriculture
Washington, D.C.

Mike Johanns, Secretary

National Agricultural Statistics Service

Ron Bosecker, Administrator

Vic Tolomeo, California Statistician

The California Statistics 2005 Annual is a joint effort of the California Department of Food and Agriculture (CDFA) and the United States Department of Agriculture (USDA). Like the previous 61 issues, it contains a summary of statistical data that was originally published by CDFA and USDA, primarily in the Dairy Information Bulletin. This publication would not be possible without the cooperation of the individuals and firms engaged in the production, manufacture, and distribution of milk and dairy products. Both corrections of errors and revisions based on receipt of more complete information are the basis of all changes from previously published data.



California Department of Food and Agriculture

A.G. Kawamura, Secretary
Dairy Marketing Branch

1220 N Street, Sacramento, CA 95814
(916) 341-5988 / www.cdfa.ca.gov/dairy

Dairy Statistics & Trends 2005

Dairy Industry 2004

California Dairy Landscape.....	4
Facts, Ranking, & Highlights.....	6
California Leading Agricultural Commodities 2003.....	7
Cows, Production, Receipts, California and U.S.....	8
U.S. Cows, Production, Milk Per Cow, Table/Maps.....	9

Commercial Milk Production

Commercial Milk Production, Overview.....	11
Top Counties Profile and Map.....	12
California Counties: Cows, Dairies, Cows Per Dairy.....	13
Bulk Milk Production, Fat & SNF Test, by Year/Month.....	14
Bulk Milk Production, Fat & SNF Test, by County.....	15
Production of All Milk, by County, by Month.....	16
Production of Market Milk, by County, by Month.....	18
Production of Manufacturing Milk, by County, by Month.....	20

Pooled Milk Utilization

Pooled Milk Utilization.....	22
Pooled Milk and Net Milk Available in California.....	24
Quota in California, Quota Transfers.....	25

Sales of Class 1 Market Milk Products

Sales of Market Milk Products, Overview.....	26
Sales of Class 1 Market Milk Products, by Month.....	27
Fluid Milk Container Survey, October 2004.....	28
Class 1 Sales, by Marketing Areas, Flavored Milk Graph.....	30

Manufacture of Dairy Products

Production of Dairy Products, Overview.....	31
Class 2 Production.....	32
California Dairy Processing Plant Locations.....	34
Class 3 Production.....	35
Class 4a Production.....	36
Class 4b Production.....	37

Pricing/Costs/Other Information

Pricing/Costs Overview.....	38
Minimum Class 1 Prices.....	39
A.C. Nielsen 50-U.S. City Retail Price Averages.....	40
Minimum Class 2 Prices.....	42
Minimum Class 3 Prices.....	43
Minimum Class 4a/4b Prices.....	44
Quota, Base, Overbase Prices.....	45
Average Prices Paid Producers.....	46
U.S. Mailbox Prices.....	47
Production Cost Summary.....	48
Manufacturing Cost Summary.....	49
Classification of Dairy Products, Historic Timeline.....	50
Key Department Contacts.....	55



California's Dairy Landscape



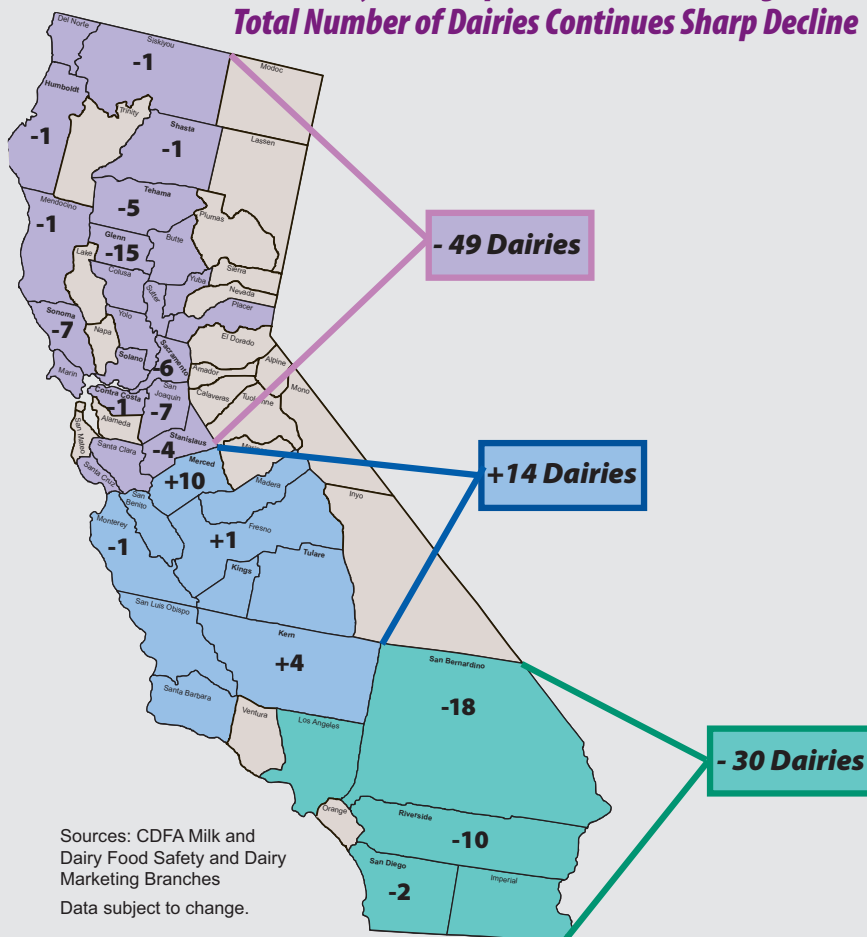
California dairy product and milk production continued to soar in 2005. The year started with heavy rains and winter weather conditions in the southern part of the State, but milk production continued to roll forward with a record-setting 11 months of three billion or more pounds of production in 2005. On-farm milk production in 2005 was steady and on the increase throughout the year. Compared to 2004, California's average milk production per cow increased from 21,005 to 21,385 lbs. per cow and the total number of cows increased by 33,043 cows: all contributing to higher milk production. Across the state, 37 counties contributed to the state's total milk production, with a handful of counties continuing to be responsible for the bulk of the production. Tulare, Merced, Stanislaus, Kings, and Kern counties accounted for 67 percent of the state's market milk production.

The shift of California's dairy landscape continued in 2005, with dairies relocating or shutting down at an increasing rate. In 2005 (compared to 2004), the northern California and southern California areas recorded a net loss of **79** dairies - while the mid-section valley area of California only showed a net gain of **14** dairies. These totals equate to **65** California dairies either shutting down or moving to areas out

of state. San Bernardino and Riverside counties continued to lose dairies, accounting for **28** of the dairies either shutting down, moving north to the Valley region, or moving to other states. The northern California region recorded a loss of **49** dairies (with no counties reporting new dairy operations), compared to a loss

of only **20** dairies in 2004. Over the past few years, the Valley region (blue shaded area) consistently recorded the largest increases in dairy operations, for example, in 2004, this area gained **36** dairies (compared to 2003). This shift of dairy operations relocating to the Valley region over the last few years appears to be changing, with more dairies either

California's Dairy Landscape Continued to Change in 2005 ... Total Number of Dairies Continues Sharp Decline



Sources: CDFA Milk and Dairy Food Safety and Dairy Marketing Branches
Data subject to change.

ceasing to operate or moving out of state in 2005.

Utilization in 2005 continued to reflect recent production trends with the production of butter, nonfat powder and cheese continuing to play major roles in how plants converted the increasing milk supply into dairy products. Class 4a (butter and powder) and Class 4b (cheese) accounted for 77 percent of all milk available on a total solids basis. Class 4b (cheese) led all classes in utilization with over 48 percent of all milk solids being used to produce cheese.

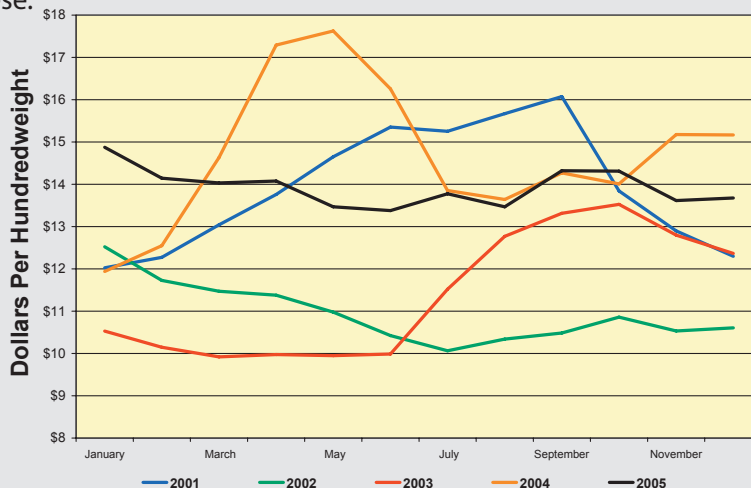
Mozzarella, Cheddar, and Jack cheeses accounted for 85 percent of all cheese produced in California. The utilization of milk into Class 1 (fluid

milk) products continued to decrease, averaging 14.7 percent for the entire year. Class 1 (milk used for fluid purposes) sales continued to decline, down 0.2 percent from 2004. Overall, sales of reduced-fat and skim milks showed increases, while lowfat and half-and-half showed slight decreases. Sales of whole milk were significantly down from 2004, at -3.5 percent.

The federal Milk Income Loss Contract (MILC) program came to an end October 31, 2005, with a proposed renewal of the program at a lower rate per hundredweight on the docket for the President's signature in early 2006. In the summer of 2005, with both cow numbers and production per cow on the rise, the Cooperatives Working Together (CWT) program tried to

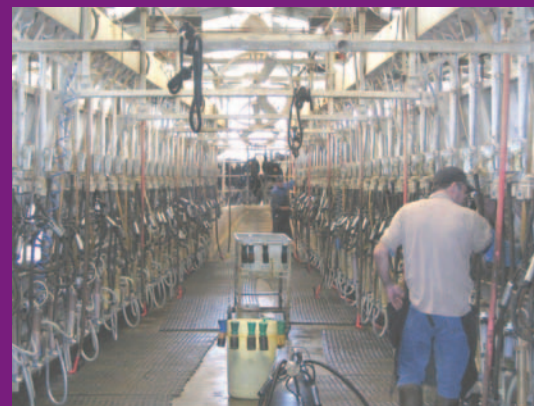
impact the surging increase in milk production across the U.S. with another round of herd retirements and continued acceptance of dairy product export bids. Across the U.S., the latest round of the herd retirement program removed 64,050 cows to yield an estimated 1.2 billion pound reduction in milk production. In the first two years of export activities, CWT helped move more than 10 million pounds of cheese out of the domestic market. The goal is to export a volume of cheese and butter that represents

Average Prices Paid to Producers January-December 2003, 2004, 2005



nearly one billion pounds of milk equivalent on a butterfat basis.

The 12-month average growth in milk production for 2005 was 3.0 percent, with the last five-years averaging an overall 3.1 percent milk production growth. The 12-month average price paid to producers was \$13.93 (low: \$13.35, high: \$14.86) per hundredweight, down five percent from the higher average prices paid to producers in 2004. Inconsistent consumer demand, strong world prices, and continued lack of surplus dairy products all contributed to volatile commodity prices, not necessarily causing large spikes or dips in prices, but influencing up and down prices on a daily basis. Near the end of 2005 and early 2006, the steady increase in milk production





Dairy Landscape, Facts, Highlights

throughout the year was starting to create more milk on the market than demand for dairy products, and commodity prices began to decline.

Energy availability was plentiful but in most instances more costly; fuel costs soared after Hurricane Katrina and are now lower but remain volatile; and environmental concerns continue to affect both dairy producers and processors. In addition, USDA held a hearing in early 2006 focusing on changes to the make allowances in their Class III (cheese) and IV (butter, powder) pricing formulas. Changes in these allowances will also affect the federal Class I and II prices. Changes in the federal pricing formula allowances will affect the competitiveness of California milk and dairy products prices. All of these factors will continue to play a major role in the California dairy industry in 2006.

Hearings and Related Issues

In early February, the Department held a public hearing to consider changes to the economic pricing formulas for milk used to make Class 4a and 4b products. The hearing focused on adjustments to manufacturing cost allowances, f.o.b. California price adjusters, and the whey pricing component in the Class 4b formula.

The hearing decision brought about a number of changes to the Class 4a and 4b formulas, and the whey protein pricing component was left unchanged.

A second hearing was held to consider the Class 1 (milk used for fluid purposes) economic pricing formula. This hearing brought forth much discussion on the likes and differences between California's Class 1 price and the Class I price paid to producers regulated by the federal milk marketing orders. No changes to the California Class 1 pricing formula were made as a result of this hearing.

Another hearing was granted to take place in early 2006. This hearing will consider proposed changes to the milk movement incentives provided for in California, namely transportation allowances and transportation credits. The hearing will review proposals submitted to address the competitiveness of milk movement costs in light of the structural changes in the dairy industry. Transportation allowances are used to encourage milk to move from supply regions to higher use plants that are typically located near



urban centers. Transportation credits serve a similar function, but are used to encourage milk to move from receiving plants located in supply areas to the higher use plants.

Facts, Highlights, Rankings

California has been the leading state in agricultural production for over 50 years and the sales of milk and cream continue to be an important agricultural commodity for California, generating \$5.2 billion in 2005.

- California ranked first in milk production in the U.S., followed by Wisconsin, New York, Pennsylvania, and Idaho.
- California continues to lead the nation in the production of butter, nonfat dry milk, ice cream, Mozzarella cheese, and whey protein concentrate.
- California produces one out of every five glasses of milk and one out of every five pounds of cheese in the U.S.
- Approximately 19 percent of all dairy cows in the U.S. live in California.
- California's total milk production was 37.6 billion pounds, 21 percent of the nation's total milk production.

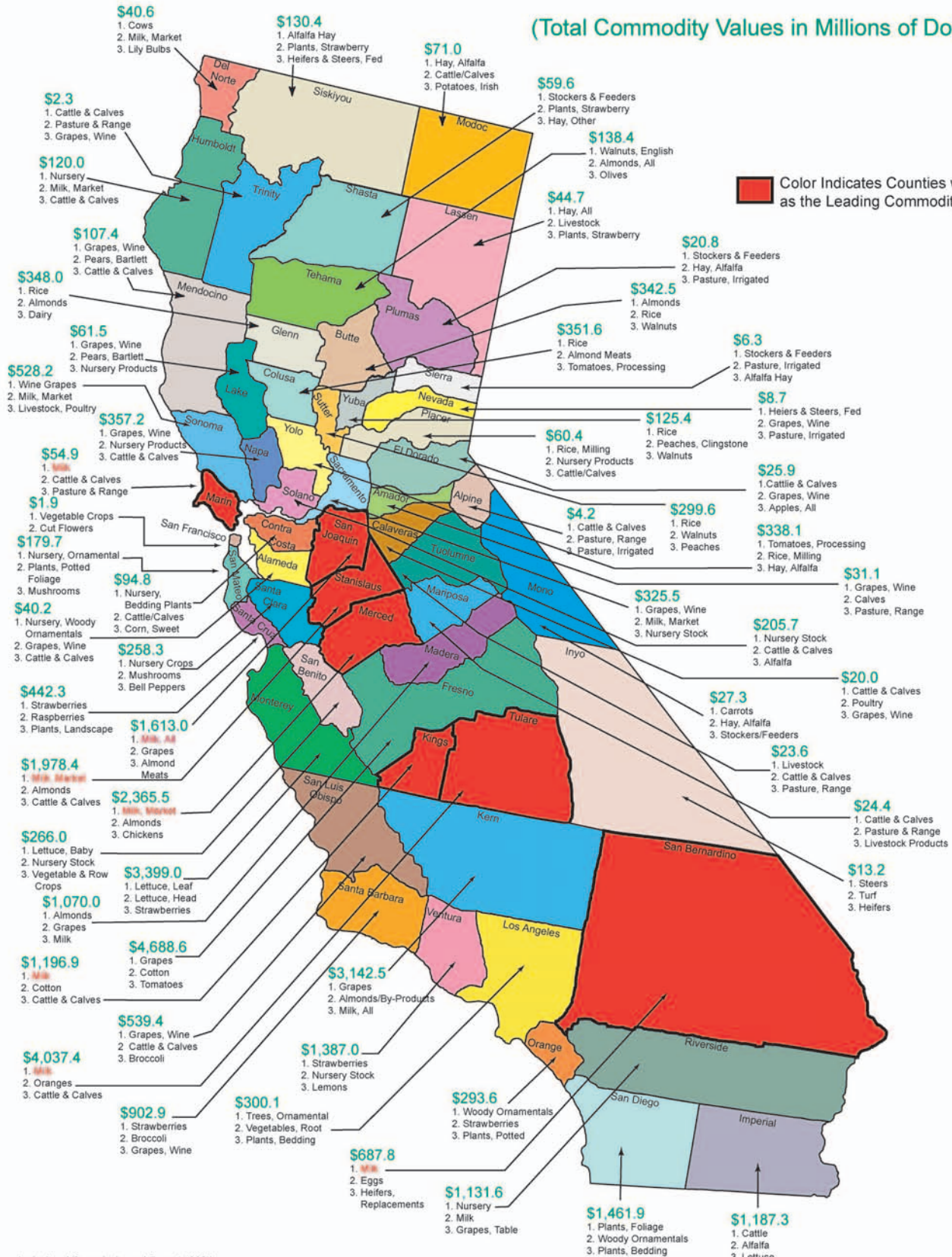


Leading Agricultural Commodities

California's Leading Agricultural Commodities by County, for the Year 2004

(Total Commodity Values in Millions of Dollars)

Color Indicates Counties with MILK as the Leading Commodity



Source: Agricultural Commissioners' Reports 2004, California Agricultural Statistics Service



CALIFORNIA COWS, PRODUCTION, RECEIPTS



**California Estimated Number of Milk Cows on Farms,
Average Production Per Milk Cow, Total Production on Farms, and
Cash Receipts from Farm Marketing of Dairy Products, 2000-2005 ^{1/}**

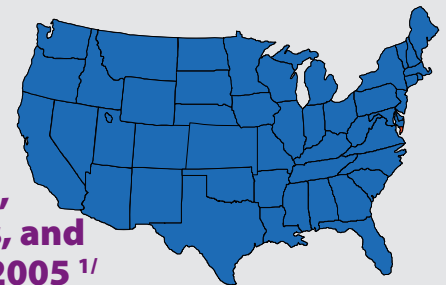
Year	Milk Cows & Heifers That Have Calved, On Farms		Average Production Per Milk Cow		Total Production On Farms		Cash Receipts From Farm Marketings Of Dairy Products ^{2/}
	Jan. 1 Total	Annual Average	Milk	Milk Fat Test	Milk	Milk Fat Test	
	<i>Thousands</i>		<i>Pounds</i>	<i>Percent</i>	<i>Million Pounds</i>	<i>Percent</i>	<i>Thousand Dollars</i>
2000	1,490	1,526	21,149	3.68	32,273	3.68	3,703,920
2001	1,560	1,589	20,913	3.68	33,217	3.68	4,631,864
2002	1,624	1,648	21,277	3.69	35,026	3.69	3,835,347
2003	1,681	1,688	20,993	3.67	35,437	3.67	4,039,818
2004	1,741	1,725	21,139	3.67	36,465	3.67	5,351,273
2005 ^{3/}	1,760	1,755	21,404	3.66	37,564	3.66	5,226,738

^{1/} USDA/NASS data.

^{2/} All milk and cream.

^{3/} Figures for 2005 are preliminary.

UNITED STATES COWS, PRODUCTION, RECEIPTS



**United States, Estimated Number of Milk Cows on Farms,
Average Production Per Milk Cow, Total Production on Farms, and
Cash Receipts from Farm Marketing of Dairy Products, 2000-2005 ^{1/}**

Year	Milk Cows & Heifers That Have Calved, On Farms		Average Production Per Milk Cow		Total Production On Farms		Cash Receipts From Farm Marketings Of Dairy Products ^{2/}
	Jan. 1 Total	Annual Average	Milk	Milk Fat Test	Milk	Milk Fat Test	
	<i>Thousands</i>		<i>Pounds</i>	<i>Percent</i>	<i>Million Pounds</i>	<i>Percent</i>	<i>Thousand Dollars</i>
2000	9,190	9,206	18,201	3.68	167,559	3.68	20,621,983
2001	9,183	9,114	18,159	3.67	165,497	3.67	24,709,749
2002	9,117	9,139	18,571	3.67	170,063	3.68	20,582,238
2003	8,994	9,083	18,749	3.67	170,312	3.67	21,238,737
2004	9,010	9,010	18,957	3.67	170,805	3.67	27,367,858
2005 ^{3/}	9,034	9,041	19,576	N/A	176,989	N/A	N/A

^{1/} USDA/NASS data.

^{2/} All milk and cream.

^{3/} Figures for 2005 are preliminary.

N/A – Unavailable at time of release.

Tables are derived from USDA/NASS statistics.

Total milk production figures on all farms includes all milk produced on the farm.



Cows, Production, Receipts, by State

**Total Production on Farms, Estimated Number of Milk Cows on Farms,
Average Production Per Milk Cow, Number of Dairies, by State, 2005 ^{1/2/}**

State	Total Production on Farms Milk	% Change from 2004	Milk cows on farms ^{2/}	Average production per milk cow Milk	Number of Licensed Dairies	Rank in United States Milk Production	Percent of United States Milk Production
	<i>Million Pounds</i>		<i>Thousands</i>	<i>Pounds</i>			<i>Percent</i>
Alabama	224	-8.6	16	14,000	90	43	0.1
Alaska	14	-7.5	1	12,273	10	50	0.0
Arizona	3,742	2.6	163	22,957	140	13	2.1
Arkansas	297	-8.0	22	13,500	210	40	0.2
California	37,564	3.0	1,755	21,404	1,970	1	21.2
Colorado	2,348	7.5	104	22,577	170	16	1.3
Connecticut	384	-2.0	20	19,200	170	36	0.2
Delaware	131	2.8	7	17,716	90	46	0.1
Florida	2,271	0.8	137	16,577	180	19	1.3
Georgia	1,398	-1.3	81	17,259	320	25	0.8
Hawaii	70	-13.5	5	12,889	5	48	0.0
Idaho	10,161	11.7	455	22,332	725	5	5.7
Illinois	1,958	-1.0	104	18,827	1,155	20	1.1
Indiana	3,166	4.6	156	20,295	1,830	14	1.8
Iowa	4,020	4.4	194	20,722	2,370	12	2.3
Kansas	2,276	2.7	111	20,505	460	18	1.3
Kentucky	1,371	-3.6	106	12,934	1,335	26	0.8
Louisiana	433	-9.6	35	12,371	280	35	0.2
Maine	595	-2.8	33	18,030	370	32	0.3
Maryland	1,161	-0.1	72	16,125	655	28	0.7
Massachusetts	290	-2.0	17	17,059	200	41	0.2
Michigan	6,735	6.4	311	21,656	2,590	8	3.8
Minnesota	8,195	1.1	453	18,091	5,530	6	4.6
Mississippi	381	0.5	25	15,240	230	37	0.2
Missouri	1,875	1.5	117	16,026	1,780	21	1.1
Montana	372	6.9	19	19,579	120	38	0.2
Nebraska	1,077	2.7	60	17,950	405	30	0.6
Nevada	542	6.5	25	21,680	30	33	0.3
New Hampshire	302	-0.3	16	18,875	140	39	0.2
New Jersey	192	-4.0	12	16,000	120	45	0.1
New Mexico	6,951	3.2	328	21,192	170	7	3.9
New York	12,078	3.7	648	18,639	6,430	3	6.8
North Carolina	1,005	-0.1	54	18,611	365	31	0.6
North Dakota	527	0.2	33	15,970	360	34	0.3
Ohio	4,743	4.0	270	17,567	3,610	11	2.7
Oklahoma	1,236	-2.1	75	16,480	380	27	0.7
Oregon	2,284	0.6	121	18,876	330	17	1.3
Pennsylvania	10,503	4.4	561	18,722	8,700	4	5.9
Rhode Island	19	-4.6	1	18,700	20	49	0.0
South Carolina	290	1.0	18	16,111	110	42	0.2
South Dakota	1,437	6.7	81	17,741	650	24	0.8
Tennessee	1,102	-4.6	70	15,743	710	29	0.6
Texas	6,442	7.2	320	20,131	780	9	3.6
Utah	1,661	3.2	88	18,875	345	23	0.9
Vermont	2,641	1.8	143	18,469	1,230	15	1.5
Virginia	1,784	3.1	105	16,990	815	22	1.0
Washington	5,608	3.5	241	23,270	610	10	3.2
West Virginia	194	0.0	13	14,923	130	44	0.1
Wisconsin	22,866	3.5	1,236	18,500	15,100	2	12.9
Wyoming	74	17.2	5	14,860	30	47	0.0
United States ^{3/}	176,989	3.5	9,041	19,576	64,555		

^{1/} USDA/NASS data.

^{2/} Average number during year, heifers that have not freshened excluded.

^{3/} State totals may not add to U.S. totals because of rounding.

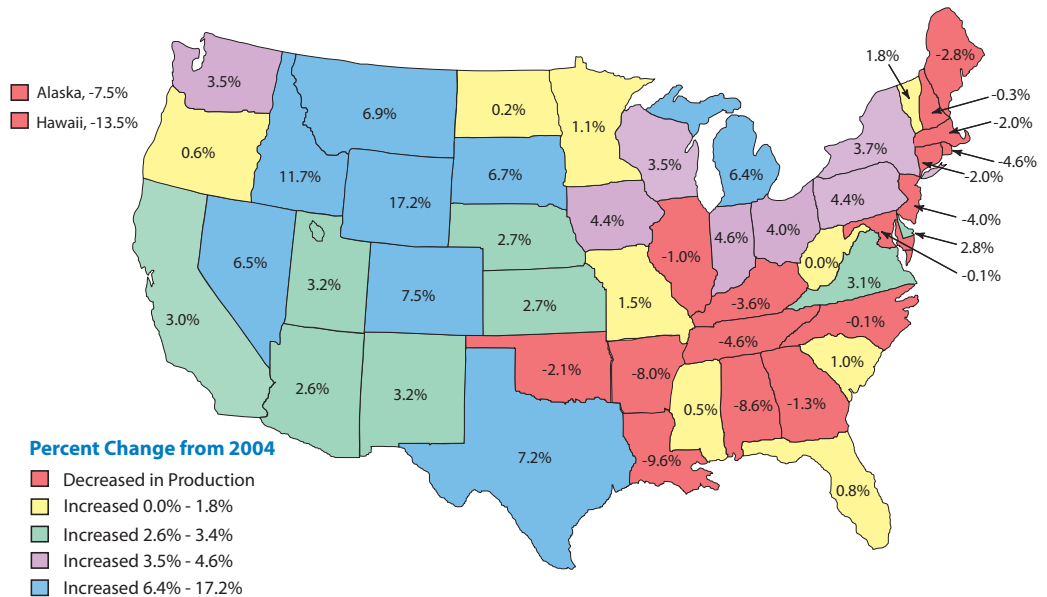




Milk Production, Milk Per Cow, by State

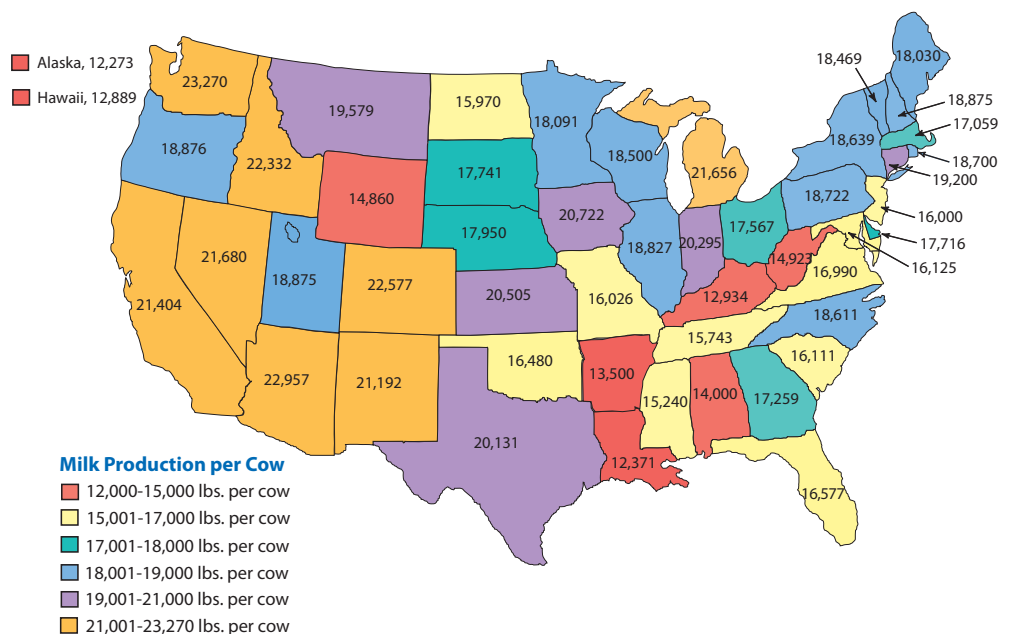
U.S. Milk Production, 2005 Percent Change from 2004

- For the second year in a row, Wyoming recorded the strongest increase in milk production (up 17.2%), while the largest decline in milk production was experienced by Hawaii (down 13.5%).
- California continues to lead the nation in total milk production at 37.6 billion pounds, an increase of 3.0% over 2004.
- U.S. milk production for 2005 recorded an overall 3.5% increase compared to 2004.
- Decreases in production (red shaded areas) were experienced from Oklahoma to the east, no Western area states.



Milk Production Per Cow, 2005

- Only six states recorded a decrease in milk per cow, compared to 2004 data (compared to the previous year when 15 states recorded decreases in milk per cow).
- Washington recorded the most milk produced per cow at 23,270 pounds; while Alaska recorded the least milk produced per cow at 12,273 pounds.
- The majority of the highest milk produced per cow totals (over 21,000 pounds per cow) were recorded in the Western area states, with the exception of Michigan.



Commercial Milk Production

California total milk production increased 3.0 percent in 2005 to 37.5 billion pounds (last five-year average of 3.1 percent). The majority of the milk, 97.5 percent, was market grade (Grade A), with the remaining 2.5 percent manufacturing grade (Grade B). A portion of the manufacturing grade milk was produced by traditionally market grade dairies that, for regulatory reasons, opted to operate as manufacturing grade facilities.

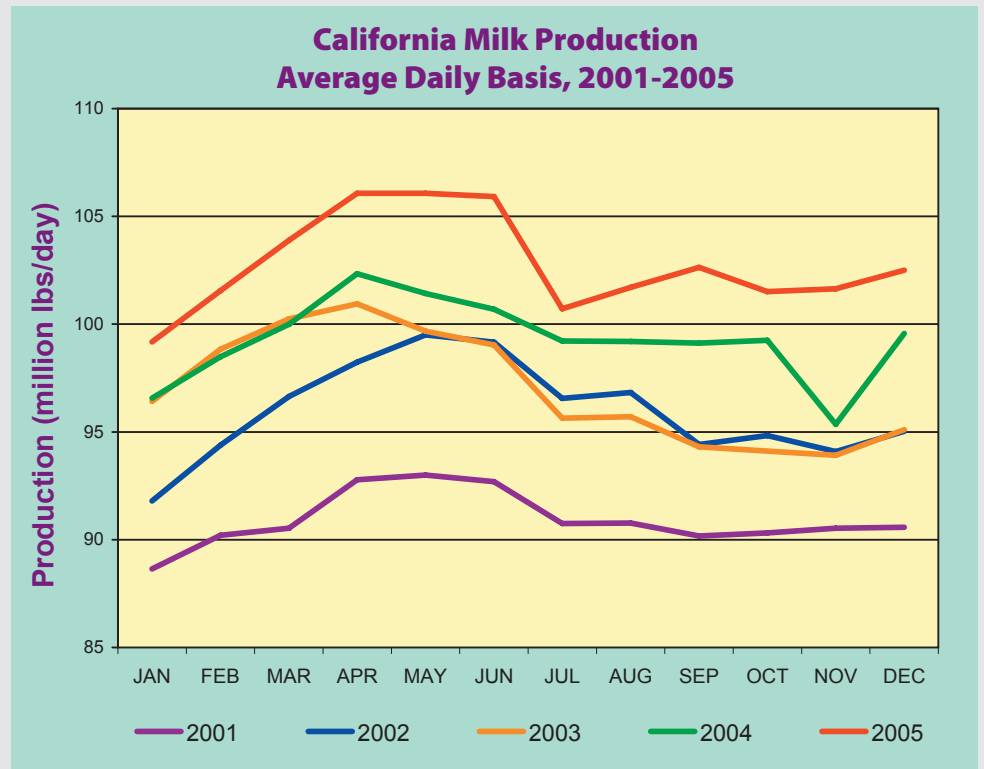
The 30 milk-producing counties of the northern California region accounted for 89 percent of the market milk and 90 percent of the manufacturing milk produced commercially during 2005.

The five leading counties in total milk production for 2005, in ranking order, were: Tulare (26 percent), Merced (14 percent); Stanislaus (10 percent); Kings (9 percent); and Kern (8 percent). These five counties accounted for 67 percent of California's total market milk production.

The five leading counties in manufacturing milk production, in ranking order, were: Tulare (23 percent); Merced (13 percent); Humboldt (9 percent); Madera (8 percent); and Riverside (8 percent). These five counties accounted for 61 percent of California's total manufacturing milk production.



The following chart represents the production of milk, in millions of pounds per day, on a monthly basis, January 2001 through December 2005.





Top Counties Profile

Top 10 Milk Producing Counties in 2005



Market Milk (Grade A)

County (by rank)	Pounds of Milk Produced in 2004 (in thousand pounds)	% Change from 2004
Tulare	9,632,714	4.36%
Merced	4,966,388	-0.37%
Stanislaus	3,835,654	2.40%
Kings	3,225,096	4.77%
Kern	2,976,408	16.38%
San Bernardino	2,395,609	-12.64%
Fresno	2,362,547	10.97%
San Joaquin	2,223,457	2.14%
Madera	1,351,212	2.18%
Riverside	1,202,152	-11.27%

Manufacturing Milk (Grade B)

County (by rank)	Pounds of Milk Produced in 2004 (in thousand pounds)	% Change from 2004
Tulare	209,657	27.94%
Merced	118,985	295.93%
Humboldt	87,037	0.21%
Madera	73,391	187.84%
Riverside	69,286	8.22%





Cows, Dairies, Cows Per Dairy, by County

Number of Milk Cows and Heifers that have Calved on Farms, Number of Dairies, and Average Number of Cows per Dairy in California, by County and Region, 2004 and 2005

County and Region ^{1/}	2004			2005		
	Number Cows	Number Dairies ^{2/}	Average Number Cows/Dairy	Number Cows ^{5/}	Number Dairies ^{2/}	Average Number Cows/Dairy
Butte	661	3	220	529	3	176
Contra Costa ^{3/}					1	
Del Norte	3,047	10	305	3,238	10	324
Fresno	95,577	117	817	112,600	118	954
Glenn	18,404	60	266	17,696	45	393
Humboldt	16,138	92	175	16,147	91	177
Kern	121,147	51	2,375	138,281	55	2,514
Kings ^{4/}	149,484	165	986	155,238	165	941
Madera	63,934	57	1,020	67,173	57	1,178
Marin	10,265	29	354	10,127	29	349
Mendocino ^{3/}		2			1	
Merced	237,854	317	750	239,786	327	733
Monterey	1,607	4	402	1,402	3	467
Placer ^{3/}		1			1	
Sacramento	17,764	48	370	17,228	42	410
San Benito	842	3	281	837	3	279
San Joaquin	103,619	148	700	105,393	141	747
Santa Clara ^{3/}		2			2	
Santa Cruz ^{3/}		1			1	
Shasta ^{3/}	105	3	35		2	
Siskiyou	1,606	5	321	1,425	4	356
Solano	4,068	5	814	4,083	5	817
Sonoma	30,660	82	374	29,590	75	395
Stanislaus	178,420	311	574	183,762	307	599
Sutter ^{3/}		1			1	
Tehama	4,514	23	196	5,426	18	301
Tulare	442,853	334	1,326	451,093	334	1,351
Yolo	2,043	3	681	2,044	3	681
Yuba	3,278	4	820	3,328	4	832
Northern California	1,511,201	1,882	810	1,569,693	1,848	849
Imperial	4,528	3	1,509	5,108	3	1,703
Los Angeles ^{3/}		2			2	
Riverside	67,573	55	1,229	59,973	45	1,333
San Bernardino	131,675	154	855	114,171	136	839
San Diego	5,397	8	675	4,392	6	732
San Luis Obispo ^{3/}		1			1	
Santa Barbara ^{3/}		2			2	
Southern California	213,416	225	949	187,968	195	964
STATE TOTALS	1,724,617	2,107	825	1,757,661	2,043	860

^{1/} Counties omitted have no reported milk production.

^{2/} Number of dairies source is Milk and Dairy Food Safety Branch.

^{3/} Not published, but included in total.

^{4/} Kings County cow numbers for 2004 have been revised from 162,656 down to 149,484

^{5/} Cow numbers for 2005 increased by 33,044 from the previous year.





C A L I F O R N I A COMMERCIAL PRODUCTION OF BULK MILK

Commercial Production of Bulk Milk, Average Milk Fat and Solids-Not-Fat Test in California, by Year, 2001-2005 ^{1/}

Year and Month	Bulk Milk			Average Milk Fat Test			Average Solids-not-Fat Test			Total Bulk Milk Change From Prior Year
	Market	Manufacturing	Total ^{2/}	Market	Manufacturing	Total	Market	Manufacturing	Total	
	<i>Thousand Pounds</i>			<i>Percent</i>			<i>Percent</i>			<i>Percent</i>
2001	32,849,558	333,834	33,183,392	3.68	3.99	3.68	8.76	8.94	8.76	3.0
2002	34,693,734	332,607	35,026,341	3.67	3.99	3.67	8.71	8.91	8.71	5.6
2003	35,076,224	317,145	35,393,369	3.67	3.98	3.67	8.75	8.91	8.75	1.0
2004	35,867,690	560,274	36,427,964	3.67	3.87	3.67	8.78	8.89	8.79	2.9
2005	36,604,017	917,432	37,521,449	3.66	4.01	3.67	8.79	8.97	8.80	3.0
2002										
January	2,822,643	22,974	2,845,616	3.84	4.17	3.84	8.81	8.97	8.81	3.5
February	2,620,921	21,827	2,642,748	3.79	4.07	3.79	8.79	8.96	8.80	4.6
March	2,970,602	25,504	2,996,107	3.72	3.94	3.72	8.79	8.92	8.79	6.8
April	2,915,169	31,910	2,947,079	3.66	3.87	3.66	8.75	8.90	8.75	5.9
May	3,055,054	29,291	3,084,345	3.62	3.90	3.63	8.75	8.93	8.75	7.0
June	2,939,250	35,613	2,974,863	3.57	3.83	3.58	8.71	8.84	8.71	7.0
July	2,961,605	31,649	2,993,255	3.55	3.87	3.56	8.68	8.85	8.68	6.4
August	2,972,336	29,336	3,001,672	3.58	3.97	3.58	8.70	8.88	8.70	6.7
September	2,804,397	28,052	2,832,449	3.64	4.02	3.64	8.71	8.90	8.71	4.7
October	2,910,994	28,629	2,939,623	3.70	4.08	3.70	8.75	8.92	8.76	5.0
November	2,796,223	26,348	2,822,571	3.78	4.16	3.78	8.80	8.97	8.80	3.9
December	2,924,539	21,473	2,946,012	3.80	4.24	3.80	8.79	8.98	8.80	4.9
2003										
January	2,966,537	22,299	2,988,837	3.78	4.19	3.78	8.75	8.91	8.76	5.0
February	2,748,948	18,592	2,767,540	3.74	4.13	3.74	8.74	8.95	8.74	4.7
March	3,082,279	25,387	3,107,666	3.71	3.98	3.72	8.73	8.86	8.73	3.7
April	3,004,747	23,649	3,028,396	3.68	3.98	3.68	8.74	8.93	8.74	2.8
May	3,064,138	25,685	3,089,822	3.64	3.94	3.64	8.71	8.93	8.72	0.2
June	2,943,488	27,615	2,971,103	3.55	3.84	3.55	8.68	8.86	8.68	-0.1
July	2,940,225	24,436	2,964,661	3.54	3.88	3.55	8.64	8.80	8.64	-1.0
August	2,940,130	26,590	2,966,719	3.54	3.82	3.55	8.69	8.83	8.69	-1.2
September	2,801,449	27,727	2,829,176	3.61	3.97	3.61	8.75	8.91	8.75	-0.1
October	2,884,783	32,548	2,917,331	3.66	3.97	3.66	8.80	8.95	8.80	-0.8
November	2,787,383	29,930	2,817,313	3.75	4.07	3.76	8.87	9.01	8.87	-0.2
December	2,915,604	32,687	2,948,290	3.79	4.08	3.79	8.86	8.97	8.86	0.1
2004										
January	2,950,802	42,630	2,993,431	3.79	3.93	3.79	8.82	8.91	8.82	0.2
February	2,815,405	40,640	2,856,045	3.75	3.86	3.76	8.80	8.88	8.80	3.2
March	3,058,918	40,834	3,099,753	3.68	3.87	3.68	8.75	8.87	8.75	-0.3
April	3,027,406	42,638	3,070,044	3.62	3.82	3.62	8.75	8.86	8.75	1.4
May	3,092,397	51,614	3,144,011	3.58	3.75	3.58	8.75	8.88	8.75	1.8
June	2,970,852	49,844	3,020,696	3.57	3.78	3.57	8.73	8.92	8.74	1.7
July	3,025,342	50,580	3,075,921	3.55	3.75	3.56	8.71	8.83	8.72	3.8
August	3,025,168	50,070	3,075,238	3.59	3.78	3.59	8.74	8.84	8.74	3.7
September	2,922,488	51,143	2,973,631	3.64	3.87	3.65	8.78	8.84	8.78	5.1
October	3,029,064	47,684	3,076,748	3.71	3.98	3.71	8.83	8.93	8.83	5.5
November	2,911,008	44,921	2,955,929	3.78	4.05	3.78	8.89	8.98	8.89	4.9
December	3,038,840	47,676	3,086,517	3.80	4.02	3.80	8.87	8.96	8.87	4.7
2005										
January	3,009,153	66,979	3,076,131	3.80	4.15	3.81	8.84	9.00	8.84	2.8
February	2,772,773	72,159	2,844,932	3.73	4.03	3.74	8.80	8.96	8.81	-0.4
March	3,137,521	85,781	3,223,302	3.66	3.95	3.67	8.78	8.99	8.79	4.0
April	3,104,824	78,716	3,183,540	3.64	3.96	3.64	8.80	8.96	8.81	3.7
May	3,205,403	82,698	3,288,101	3.59	3.91	3.60	8.74	8.91	8.75	4.6
June	3,097,458	80,131	3,177,589	3.56	3.90	3.57	8.74	8.89	8.74	5.2
July	3,040,691	81,472	3,122,163	3.56	3.90	3.57	8.67	8.85	8.68	1.5
August	3,076,182	76,815	3,152,998	3.55	3.89	3.55	8.72	8.92	8.72	2.5
September	3,004,339	74,665	3,079,004	3.63	4.01	3.64	8.81	8.99	8.82	3.5
October	3,070,945	75,845	3,146,790	3.71	4.10	3.72	8.86	9.05	8.87	2.3
November	2,979,879	69,379	3,049,258	3.74	4.19	3.75	8.88	9.11	8.89	3.2
December	3,104,848	72,793	3,177,642	3.77	4.21	3.78	8.89	9.10	8.89	3.0

^{1/} Includes total milk sold. Excludes milk used on ranch which are included in USDA figures

^{2/} Monthly totals may not add up to annual totals due to rounding.





Commercial Production of Bulk Milk, by County

Commercial Production of Bulk Milk, Average Milk Fat, and Solids-Not-Fat Test in California, by County and Region, 2005 ^{1/}

County and Region ^{2/}	Bulk Milk			Average Milk Fat Test ^{3/}			Average Solids-not-Fat Test ^{3/}			State Rank
	Market	Manufacturing	Total	Market	Manufacturing	Total	Market	Manufacturing	Total	
	Thousand Pounds			Percent			Percent			
Butte	10,735	483	11,218	4.10	3.76	4.09	9.08	8.42	9.05	31
Colusa ^{4/}										37
Contra Costa ^{4/}										34
Del Norte	40,975	13,649	54,624	3.82	4.70	4.04	8.79	9.36	8.93	21
Fresno	2,362,547	27,750	2,390,297	3.62	3.75	3.62	8.81	8.87	8.81	7
Glenn	343,852	31,453	375,305	3.68	3.73	3.68	8.77	8.81	8.77	12
Humboldt	197,400	87,037	284,436	4.01	4.46	4.15	8.88	9.12	8.96	14
Kern	2,976,408	16,743	2,993,151	3.63	3.60	3.63	8.75	8.88	8.75	5
Kings	3,225,096	68,435	3,293,531	3.66	3.93	3.67	8.78	8.93	8.78	4
Madera	1,351,212	73,391	1,424,603	3.63	4.41	3.67	8.80	9.28	8.82	9
Marin	212,485	283	212,768	3.63	3.55	3.63	8.83	8.76	8.83	15
Mendocino ^{4/}										27
Merced	4,966,388	118,985	5,085,373	3.69	4.39	3.70	8.84	9.11	8.84	2
Monterey	29,535	200	29,734	3.77	3.78	3.77	8.83	8.75	8.83	26
Placer ^{4/}										29
Sacramento	359,367	6,005	365,372	3.77	3.76	3.77	8.77	8.78	8.77	13
San Benito	17,539	215	17,754	3.52	3.35	3.52	8.82	8.93	8.82	28
San Joaquin	2,223,457	11,705	2,235,163	3.68	3.75	3.68	8.79	8.83	8.79	8
Santa Clara ^{4/}										32
Santa Cruz ^{4/}										36
Shasta ^{4/}										35
Siskiyou	30,219	0	30,219	3.72		3.72	8.80		8.80	25
Solano	86,547	51	86,598	3.63	3.81	3.63	8.81	8.82	8.81	19
Sonoma	620,586	1,135	621,721	3.72	3.59	3.72	8.85	8.82	8.85	11
Stanislaus	3,835,654	61,558	3,897,212	3.67	3.97	3.67	8.81	8.98	8.81	3
Sutter ^{4/}										30
Tehama	56,099	58,981	115,080	3.82	4.19	4.01	8.84	9.09	8.97	16
Tulare	9,632,714	209,657	9,842,371	3.67	3.77	3.68	8.79	8.84	8.79	1
Yolo	10,317	33,032	43,348	3.87	3.92	3.91	8.76	8.91	8.88	23
Yuba	69,932	649	70,582	3.88	4.79	3.89	8.88	9.41	8.89	20
Northern California	32,723,627	823,199	33,546,826	3.67	4.06	3.68	8.80	9.00	8.80	
Imperial	95,816	0	95,816	4.06		4.06	8.92		8.92	17
Los Angeles ^{4/}										24
Riverside	1,202,152	69,286	1,271,438	3.61	3.52	3.60	8.76	8.77	8.76	10
San Bernardino	2,395,609	24,851	2,420,459	3.56	3.65	3.56	8.75	8.80	8.75	6
San Diego	93,014	96	93,111	3.37	3.37	3.37	8.75	8.76	8.75	18
San Luis Obispo ^{4/}										33
Santa Barbara ^{4/}										22
Southern California	3,880,389	94,233	3,974,623	3.58	3.56	3.58	8.76	8.78	8.76	
STATE TOTALS	36,604,017	917,432	37,521,449	3.66	4.01	3.67	8.79	8.97	8.80	

^{1/} Includes total milk sold. Excludes milk used on ranch.

^{2/} Counties omitted have no reported milk production.

^{3/} Tests were computed from unrounded data.

^{4/} Not published, but included in total.



**Commercial Milk Production, by County, by Month****Commercial Production of All Milk in California,
by Counties and Regions, 2005 ^{1/}**

County and Region ^{2/}	January	February	March	April	May	June
	<i>Pounds</i>					
Butte	967,821	905,416	1,050,663	1,016,676	1,014,865	958,691
Colusa ^{3/}						
Contra Costa ^{3/}						
Del Norte	3,910,659	3,469,016	4,196,437	4,632,869	5,146,312	4,823,863
Fresno	191,092,981	173,703,956	202,669,298	201,279,339	208,490,423	202,930,855
Glenn	33,063,488	30,038,364	33,743,763	32,869,241	33,372,490	32,058,599
Humboldt	21,413,627	19,876,141	24,012,159	24,875,633	27,584,637	27,908,518
Kern	246,636,248	230,604,103	262,531,933	259,843,904	262,564,632	249,271,337
Kings	268,013,730	248,735,644	283,054,494	276,978,989	285,525,227	275,132,455
Madera	112,449,200	103,862,932	119,151,152	119,081,994	125,275,465	121,463,592
Marin	17,818,533	16,354,094	18,286,366	17,874,235	18,517,895	17,759,667
Mendocino ^{3/}						
Merced	413,138,710	383,026,163	431,339,562	424,208,224	442,168,932	430,355,577
Monterey	2,811,447	2,605,484	2,399,882	2,403,694	2,459,400	2,456,540
Placer ^{3/}						
Sacramento	32,021,878	29,181,742	32,731,199	31,681,753	33,167,641	32,948,813
San Benito	1,522,182	1,402,365	1,545,659	1,521,112	1,584,902	1,538,237
San Joaquin	183,954,910	169,467,034	194,445,664	186,802,190	195,786,266	188,273,512
Santa Clara ^{3/}						
Santa Cruz ^{3/}						
Shasta ^{3/}						
Siskiyou	2,415,267	2,224,887	2,525,240	2,480,511	2,636,059	2,623,188
Solano	7,476,839	6,646,335	7,386,402	7,259,711	7,481,933	7,152,582
Sonoma	52,433,393	48,389,325	53,172,837	51,781,140	54,000,391	51,983,770
Stanislaus	316,330,406	291,642,309	327,468,119	322,607,061	339,330,900	332,250,876
Sutter ^{3/}						
Tehama	7,969,436	8,673,748	9,774,953	9,748,532	10,210,253	9,679,759
Tulare	808,329,838	746,536,558	846,306,171	836,670,031	852,622,724	828,290,049
Yolo	3,875,322	3,534,718	3,958,637	3,797,381	3,764,129	3,410,405
Yuba	6,395,540	6,004,391	6,660,873	6,350,494	6,355,950	5,962,306
Northern California	2,739,953,557	2,532,145,289	2,874,260,500	2,831,679,577	2,925,323,511	2,834,946,745
Imperial	7,013,878	7,218,303	8,632,539	8,989,510	9,456,298	8,743,442
Los Angeles ^{3/}						
Riverside	108,492,971	98,268,951	107,598,347	107,204,430	110,427,600	108,010,229
San Bernardino	205,518,204	193,176,089	217,301,918	219,638,736	225,838,222	209,605,189
San Diego	7,976,812	7,367,125	8,148,626	8,346,562	8,750,934	8,215,438
San Luis Obispo ^{3/}						
Santa Barbara ^{3/}						
Southern California	336,177,710	312,786,769	349,041,343	351,860,420	362,777,596	342,642,279
STATE TOTALS	3,076,131,267	2,844,932,058	3,223,301,843	3,183,539,997	3,288,101,107	3,177,589,024

^{1/} Includes total milk sold. Excludes milk left on ranch.^{2/} Counties omitted have no reported milk production.^{3/} Not published, but included in total.

**Commercial Milk Production, by County, by Month****Commercial Production of All Milk in California,
by Counties and Regions, 2005^{1/} - Continued**

July	August	September	October	November	December	Total
<i>Pounds</i>						
947,779	927,372	877,760	881,000	828,425	841,604	11,218,072
5,028,931	4,855,159	5,049,703	4,803,994	4,278,814	4,427,937	54,623,694
199,853,061	202,522,450	197,772,240	204,694,623	198,319,797	206,968,259	2,390,297,282
29,959,691	30,831,524	30,026,834	30,576,309	28,638,197	30,126,070	375,304,570
27,430,819	25,965,023	23,036,694	22,814,972	20,102,348	19,415,908	284,436,479
242,766,465	246,169,751	238,870,092	247,799,856	245,568,049	260,524,825	2,993,151,195
269,210,898	275,436,183	271,413,804	279,309,259	273,093,569	287,626,842	3,293,531,094
120,762,071	123,215,831	119,982,939	122,125,193	117,691,763	119,540,485	1,424,602,617
18,322,595	18,296,048	16,878,475	17,486,600	17,040,945	18,132,335	212,767,788
429,600,332	433,613,417	420,339,372	431,158,390	416,445,665	429,978,986	5,085,373,330
2,546,713	2,517,769	2,395,114	2,410,273	2,327,482	2,400,562	29,734,360
32,566,118	32,314,932	27,580,078	27,612,369	26,417,351	27,147,929	365,371,803
1,559,533	1,437,543	1,398,618	1,454,563	1,370,785	1,418,616	17,754,115
187,303,834	191,385,586	183,863,168	186,261,188	180,269,754	187,349,409	2,235,162,515
2,734,019	2,680,594	2,531,672	2,581,592	2,368,548	2,416,971	30,218,548
7,240,373	7,504,290	7,162,509	7,139,989	6,934,225	7,212,730	86,597,918
53,268,809	53,168,226	50,813,671	51,680,744	49,727,895	51,300,615	621,720,816
335,499,739	336,637,634	321,639,261	328,172,868	317,500,785	328,132,094	3,897,212,052
9,919,190	10,251,346	10,208,865	9,864,415	9,351,968	9,427,550	115,080,015
798,025,006	810,210,245	813,290,169	835,333,742	813,719,752	853,036,717	9,842,371,002
3,188,002	3,471,552	3,497,845	3,487,929	3,484,928	3,877,552	43,348,400
5,446,145	5,564,653	5,323,086	5,427,264	5,424,611	5,666,358	70,581,671
2,788,700,257	2,824,611,032	2,759,074,570	2,828,215,874	2,745,836,008	2,862,079,261	33,546,826,181
8,051,662	6,888,432	7,228,360	7,537,822	7,729,192	8,326,636	95,816,074
106,207,847	106,169,351	105,951,291	106,042,944	101,248,112	105,815,997	1,271,438,070
203,205,203	198,844,171	190,605,781	189,494,591	180,497,656	186,733,445	2,420,459,205
7,692,731	7,942,295	7,740,810	7,199,671	6,741,676	6,987,841	93,110,521
333,462,407	328,386,615	319,929,479	318,573,839	303,421,843	315,562,258	3,974,622,558
3,122,162,664	3,152,997,647	3,079,004,049	3,146,789,713	3,049,257,851	3,177,641,519	37,521,448,739



**Market Milk Production, by County, by Month****Commercial Production of All Market Milk in California,
by Counties and Regions, 2005 ^{1/}**

County and Region ^{2/}	January	February	March	April	May	June
<i>Pounds</i>						
Butte	927,481	857,677	1,009,096	971,923	968,928	895,728
Colusa ^{3/}						
Contra Costa ^{3/}						
Del Norte	3,119,802	2,830,963	3,240,529	3,422,514	3,719,252	3,427,132
Fresno	189,134,692	171,976,574	199,355,955	199,179,714	206,133,581	200,468,710
Glenn	29,575,916	27,624,715	31,228,903	30,507,439	30,810,517	29,424,520
Humboldt	14,982,731	13,929,282	16,855,963	17,495,814	19,108,225	19,737,031
Kern	245,505,856	228,887,682	260,289,893	258,409,246	261,094,727	248,057,933
Kings	261,639,439	242,483,829	277,458,367	271,672,810	279,501,314	269,874,252
Madera	107,019,161	98,645,478	111,462,826	111,529,592	118,443,058	115,260,529
Marin	17,818,533	16,289,392	18,269,059	17,874,235	18,499,426	17,735,400
Mendocino ^{3/}						
Merced	406,193,676	373,008,569	420,292,884	415,473,914	431,395,132	420,384,706
Monterey	2,811,447	2,605,484	2,399,882	2,403,694	2,259,889	2,456,540
Placer ^{3/}						
Sacramento	31,773,241	28,975,169	32,340,216	31,174,063	32,322,252	32,368,676
San Benito	1,522,182	1,187,009	1,545,659	1,521,112	1,584,902	1,538,237
San Joaquin	183,741,242	169,253,020	189,869,844	185,994,588	193,590,885	188,133,174
Santa Clara ^{3/}						
Santa Cruz ^{3/}						
Shasta ^{3/}						
Siskiyou	2,415,267	2,224,887	2,525,240	2,480,511	2,636,059	2,623,188
Solano	7,463,290	6,646,335	7,386,402	7,259,711	7,481,933	7,152,582
Sonoma	52,354,431	48,347,913	52,998,010	51,655,058	53,751,092	51,882,440
Stanislaus	313,694,817	288,569,034	323,005,520	316,509,342	334,060,054	326,022,319
Sutter ^{3/}						
Tehama	4,878,660	4,482,512	4,585,860	4,888,618	4,987,071	4,262,693
Tulare	792,245,109	726,846,246	828,455,628	816,977,536	836,075,303	808,710,441
Yolo	919,459	841,733	943,981	905,859	904,853	842,530
Yuba	6,395,540	6,004,391	6,623,202	6,350,494	6,355,950	5,962,306
Northern California	2,681,759,754	2,467,574,501	2,797,750,037	2,760,195,782	2,851,611,947	2,762,697,442
Imperial	7,013,878	7,218,303	8,632,539	8,989,510	9,456,298	8,743,442
Los Angeles ^{3/}						
Riverside	102,320,412	92,567,384	102,163,139	101,709,482	104,712,071	101,611,567
San Bernardino	203,002,293	191,289,540	213,466,769	217,901,689	222,567,126	208,122,105
San Diego	7,880,526	7,367,125	8,148,626	8,346,562	8,750,934	8,215,438
San Luis Obispo ^{3/}						
Santa Barbara ^{3/}						
Southern California	327,392,954	305,198,653	339,770,986	344,628,425	353,790,971	334,760,533
STATE TOTALS	3,009,152,708	2,772,773,154	3,137,521,023	3,104,824,207	3,205,402,918	3,097,457,975

^{1/} Includes total milk sold. Excludes milk left on ranch.^{2/} Counties omitted have no reported milk production.^{3/} Not published, but included in total.

**Market Milk Production, by County, by Month****Commercial Production of All Market Milk in California,
by Counties and Regions, 2005^{1/} - Continued**

July	August	September	October	November	December	Total
<i>Pounds</i>						
913,551	893,751	848,395	850,154	794,674	803,882	10,735,240
3,599,199	3,503,396	3,814,013	3,585,448	3,234,108	3,478,326	40,974,682
197,443,694	200,100,732	195,717,946	202,024,315	196,256,669	204,754,884	2,362,547,466
27,691,835	28,478,709	27,651,973	27,688,897	25,907,181	27,260,962	343,851,567
19,016,532	18,040,312	15,874,752	15,668,586	13,623,165	13,067,466	197,399,859
241,280,801	244,657,285	237,785,551	246,586,386	244,495,477	259,357,306	2,976,408,143
262,958,786	269,926,054	266,658,262	273,246,307	267,898,544	281,777,659	3,225,095,623
114,663,668	116,757,937	114,212,150	116,492,081	112,588,112	114,136,988	1,351,211,580
18,254,868	18,252,796	16,841,832	17,476,095	17,040,945	18,132,335	212,484,916
418,975,851	423,381,770	410,198,459	420,382,890	406,609,572	420,090,635	4,966,388,058
2,546,713	2,517,769	2,395,114	2,410,273	2,327,482	2,400,562	29,534,849
32,268,461	31,979,853	26,814,066	27,067,190	25,312,460	26,971,317	359,366,964
1,559,533	1,437,543	1,398,618	1,454,563	1,370,785	1,418,616	17,538,759
187,038,061	191,155,860	182,295,791	185,242,463	180,008,685	187,133,485	2,223,457,098
2,734,019	2,680,594	2,531,672	2,581,592	2,368,548	2,416,971	30,218,548
7,240,373	7,504,290	7,125,063	7,139,989	6,934,225	7,212,730	86,546,923
53,220,430	53,122,643	50,748,272	51,633,530	49,606,819	51,265,162	620,585,800
329,637,795	330,691,894	316,853,323	323,352,735	312,542,892	320,713,969	3,835,653,694
4,351,151	4,766,379	4,739,240	4,872,085	4,611,748	4,673,029	56,099,046
777,594,681	795,522,690	798,444,646	818,205,413	797,455,951	836,180,749	9,632,714,393
799,137	820,444	820,963	812,788	828,800	876,238	10,316,785
5,446,145	5,564,653	5,012,008	5,126,717	5,424,611	5,666,358	69,932,375
2,714,741,265	2,757,282,158	2,693,904,710	2,759,039,239	2,682,171,805	2,794,898,536	32,723,627,176
8,051,662	6,888,432	7,228,360	7,537,822	7,729,192	8,326,636	95,816,074
100,151,033	99,865,298	99,629,614	100,275,326	96,414,944	100,731,655	1,202,151,925
201,748,963	195,661,870	187,432,545	188,593,837	179,616,424	186,205,350	2,395,608,511
7,692,731	7,942,295	7,740,810	7,199,671	6,741,676	6,987,841	93,014,235
325,949,353	318,900,261	310,434,566	311,905,467	297,707,443	309,949,821	3,880,389,433
3,040,690,618	3,076,182,419	3,004,339,276	3,070,944,706	2,979,879,248	3,104,848,357	36,604,016,609



**Manufacturing Milk Production, by County, by Month****Commercial Production of All Manufacturing Milk in California,
by Counties and Regions, 2005 ^{1/}**

County and Region ^{2/}	January	February	March	April	May	June
<i>Pounds</i>						
Butte	40,340	47,739	41,567	44,753	45,937	62,963
Colusa ^{3/}						
Contra Costa ^{3/}						
Del Norte	790,857	638,053	955,908	1,210,355	1,427,060	1,396,731
Fresno	1,958,289	1,727,382	3,313,343	2,099,625	2,356,842	2,462,145
Glenn	3,487,572	2,413,649	2,514,860	2,361,802	2,561,973	2,634,079
Humboldt	6,430,896	5,946,859	7,156,196	7,379,819	8,476,412	8,171,487
Kern	1,130,392	1,716,421	2,242,040	1,434,658	1,469,905	1,213,404
Kings	6,374,291	6,251,815	5,596,127	5,306,179	6,023,913	5,258,203
Madera	5,430,039	5,217,454	7,688,326	7,552,402	6,832,407	6,203,063
Marin		64,702	17,307		18,469	24,267
Mendocino ^{3/}						
Merced	6,945,034	10,017,594	11,046,678	8,734,310	10,773,800	9,970,871
Monterey					199,511	
Placer ^{3/}						
Sacramento	248,637	206,573	390,983	507,690	845,389	580,137
San Benito		215,356				
San Joaquin	213,668	214,014	4,575,820	807,602	2,195,381	140,338
Santa Clara ^{3/}						
Santa Cruz ^{3/}						
Solano	13,549					
Sonoma	78,962	41,412	174,827	126,082	249,299	101,330
Stanislaus	2,635,589	3,073,275	4,462,599	6,097,719	5,270,846	6,228,557
Sutter ^{3/}						
Tehama	3,090,776	4,191,236	5,189,093	4,859,914	5,223,182	5,417,066
Tulare	16,084,729	19,690,312	17,850,543	19,692,495	16,547,421	19,579,608
Yolo	2,955,863	2,692,985	3,014,656	2,891,522	2,859,276	2,567,875
Yuba			37,671			
Northern California	58,193,803	64,570,788	76,510,463	71,483,795	73,711,564	72,249,303
Imperial						
Los Angeles ^{3/}						
Riverside	6,172,559	5,701,567	5,435,208	5,494,948	5,715,529	6,398,662
San Bernardino	2,515,911	1,886,549	3,835,149	1,737,047	3,271,096	1,483,084
San Diego	96,286					
San Luis Obispo ^{3/}						
Santa Barbara ^{3/}						
Southern California	8,784,756	7,588,116	9,270,357	7,231,995	8,986,625	7,881,746
STATE TOTALS	66,978,559	72,158,904	85,780,820	78,715,790	82,698,189	80,131,049

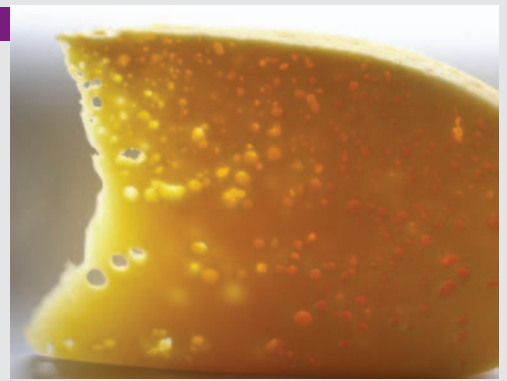
^{1/} Includes total milk sold. Excludes milk left on ranch.^{2/} Counties omitted have no reported milk production.^{3/} Not published, but included in total.

**Manufacturing Milk Production, by County, by Month****Commercial Production of All Manufacturing Milk in California
by Counties and Regions, 2005 ^{1/} - Continued**

July	August	September	October	November	December	Total
<i>Pounds</i>						
34,228	33,621	29,365	30,846	33,751	37,722	482,832
1,429,732	1,351,763	1,235,690	1,218,546	1,044,706	949,611	13,649,012
2,409,367	2,421,718	2,054,294	2,670,308	2,063,128	2,213,375	27,749,816
2,267,856	2,352,815	2,374,861	2,887,412	2,731,016	2,865,108	31,453,003
8,414,287	7,924,711	7,161,942	7,146,386	6,479,183	6,348,442	87,036,620
1,485,664	1,512,466	1,084,541	1,213,470	1,072,572	1,167,519	16,743,052
6,252,112	5,510,129	4,755,542	6,062,952	5,195,025	5,849,183	68,435,471
6,098,403	6,457,894	5,770,789	5,633,112	5,103,651	5,403,497	73,391,037
67,727	43,252	36,643	10,505			282,872
10,624,481	10,231,647	10,140,913	10,775,500	9,836,093	9,888,351	118,985,272
						199,511
297,657	335,079	766,012	545,179	1,104,891	176,612	6,004,839
						215,356
265,773	229,726	1,567,377	1,018,725	261,069	215,924	11,705,417
		37,446				50,995
48,379	45,583	65,399	47,214	121,076	35,453	1,135,016
5,861,944	5,945,740	4,785,938	4,820,133	4,957,893	7,418,125	61,558,358
5,568,039	5,484,967	5,469,625	4,992,330	4,740,220	4,754,521	58,980,969
20,430,325	14,687,555	14,845,523	17,128,329	16,263,801	16,855,968	209,656,609
2,388,865	2,651,108	2,676,882	2,675,141	2,656,128	3,001,314	33,031,615
		311,078	300,547			649,296
73,958,992	67,328,874	65,169,860	69,176,635	63,664,203	67,180,725	823,199,005
6,056,814	6,304,053	6,321,677	5,767,618	4,833,168	5,084,342	69,286,145
1,456,240	3,182,301	3,173,236	900,754	881,232	528,095	24,850,694
						96,286
7,513,054	9,486,354	9,494,913	6,668,372	5,714,400	5,612,437	94,233,125
81,472,046	76,815,228	74,664,773	75,845,007	69,378,603	72,793,162	917,432,130



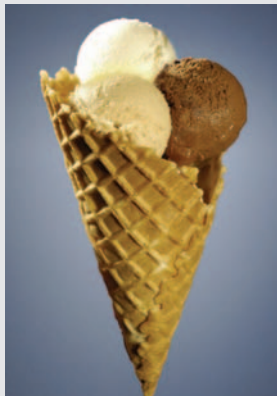
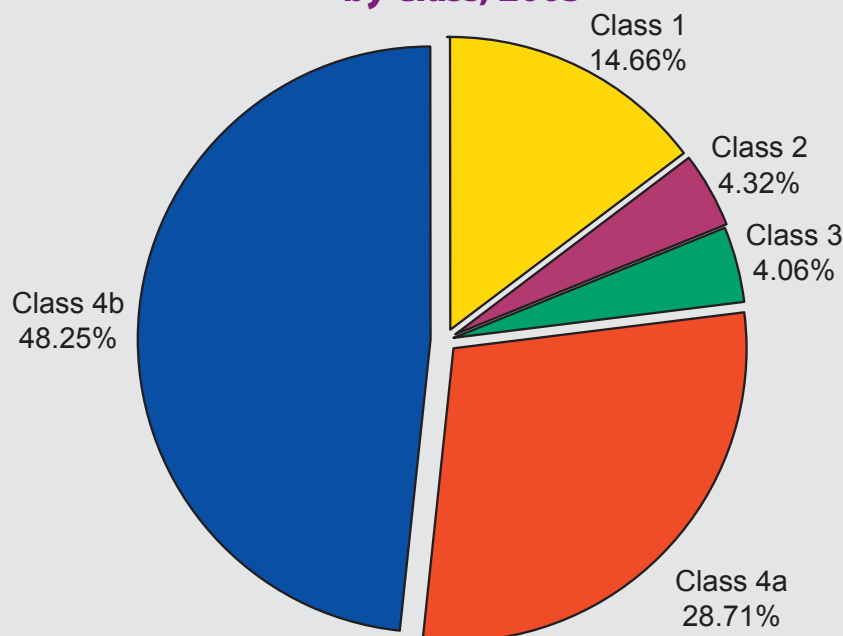
Pooled Milk Utilization



In 2005, utilization of pooled Grade A milkfat pounds increased 0.9 percent and solids-not-fat (SNF) pounds increased 1.3 percent, as compared to 2004. In addition, as compared to 2004, the breakdown of the utilization of the following classes of milk pounds on a total solids basis were as follows:
Class 1, fluid dairy products

(decreased 5.7 percent); Class 2, soft dairy products (increased 3.2 percent); Class 3, frozen dairy products (decreased 6.7 percent); Class 4a, butter and powder (decreased 1.2 percent); and Class 4b, cheese (increased 5.6 percent). In total, Class 4a and 4b accounted for 77 percent of all milk available on a total solids basis.

Utilization of Milk Produced in California, by Class, 2005





Pooled Milk Utilization

Utilization of Pooled Milk Fat, in California by Class, by Year, 2001-2005 ^{1/2/3/}

Year	Class 1	Class 2	Class 3	Class 4a	Class 4b	Fat Total	Fat \$ Value (Actual Dollars)	Quota ^{4/}	Non-Quota
<i>Thousand Pounds</i>									
2001	145,359	63,274	126,854	369,661	512,567	1,217,716	\$2,221,965,889	353,386	864,329
2002	149,627	64,262	103,043	428,231	543,425	1,288,589	\$1,514,847,606	364,584	924,005
2003	150,342	68,580	112,329	395,048	565,803	1,292,101	\$1,533,135,001	363,647	928,454
2004	130,668	73,765	108,534	412,383	568,803	1,294,154	\$2,556,173,397	323,325	958,484
2005	119,343	73,269	95,291	425,573	592,558	1,306,035	\$2,181,608,409	322,217	983,818

^{1/} Data are subject to revision.

^{2/} Includes pooled milk only. Excludes exempt, non-pool, grade B milk and bulk milk shipped out-of-California.

^{3/} Class usage has been adjusted for plant gain and inventory variance.

^{4/} Includes other source milk effective July 1, 1997 through March 31, 2004.

Utilization of Pooled Milk Solids-Not-Fat, in California by Class, by Year, 2001-2005 ^{1/2/3/}

Year	Class 1	Class 2	Class 3	Class 4a	Class 4b	SNF Total	SNF \$ Value (Actual Dollars)	Quota ^{4/}	Non-Quota
<i>Thousand Pounds</i>									
2001	617,076	110,026	88,959	805,123	1,273,808	2,894,992	\$2,401,731,486	859,272	2,035,720
2002	626,958	108,973	92,435	866,546	1,367,722	3,062,633	\$2,329,631,660	889,973	2,172,660
2003	624,665	118,706	89,012	837,916	1,415,882	3,086,180	\$2,480,019,107	888,373	2,197,857
2004	560,227	112,084	84,853	878,003	1,461,011	3,096,177	\$2,610,262,248	816,618	2,279,019
2005	531,948	118,761	85,156	850,914	1,551,017	3,137,795	\$2,774,152,749	785,516	2,352,280

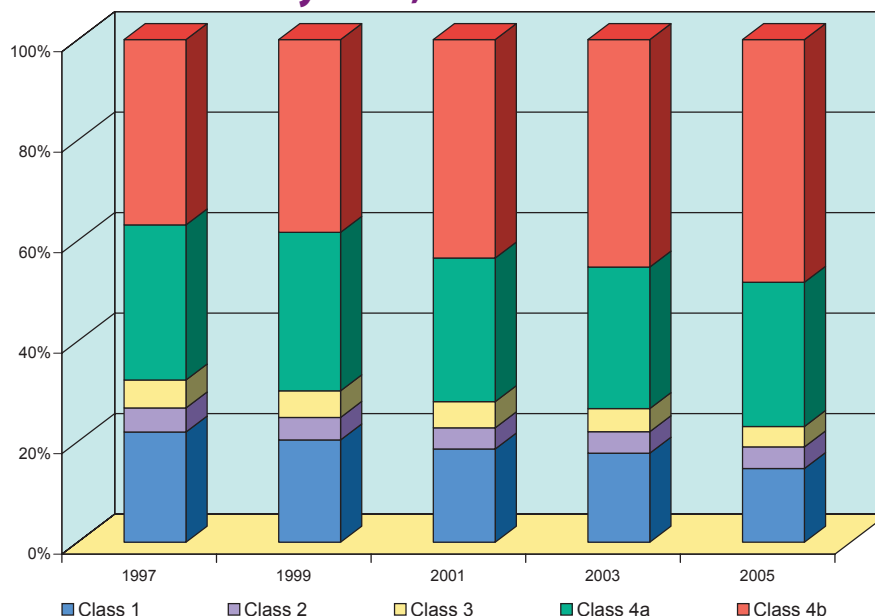
^{1/} Data are subject to revision.

^{2/} Includes pooled milk only. Excludes exempt, non-pool, grade B milk and bulk milk shipped out-of-California.

^{3/} Class usage has been adjusted for plant gain and inventory variance.

^{4/} Includes other source milk effective July 1, 1997 through March 31, 2004.

Utilization of Milk Produced in California, by Class, 1997-2005





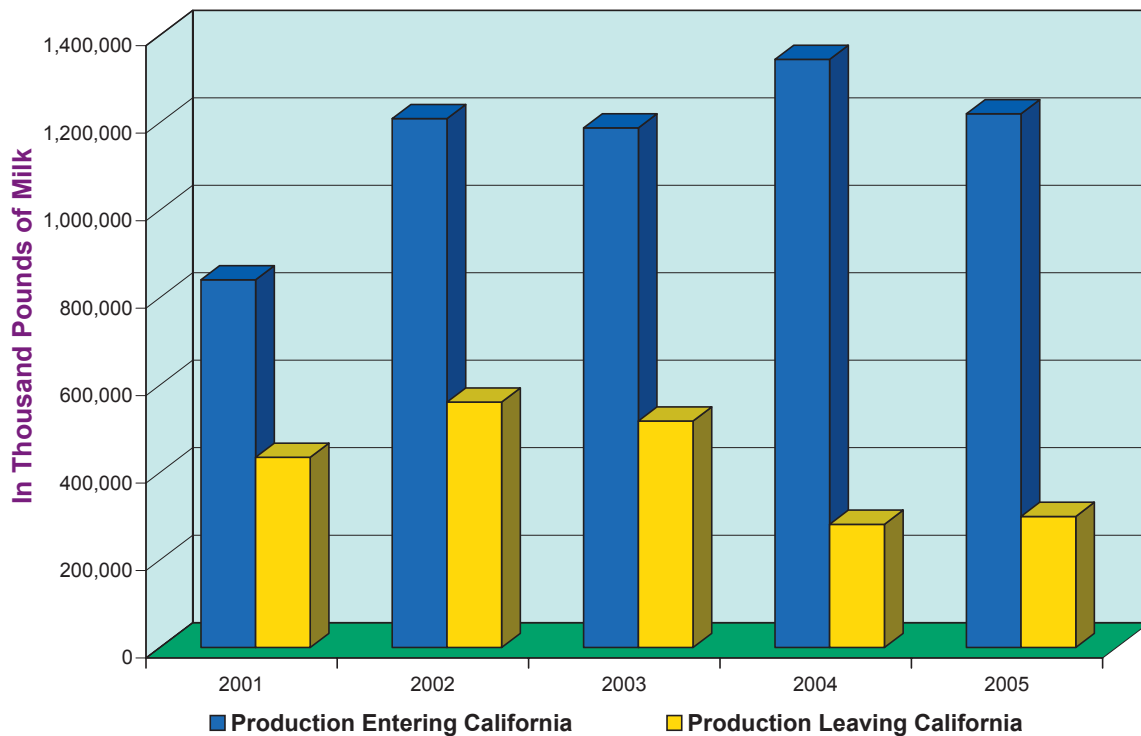
Pooled Milk & Net Milk Available

Net Milk Available in California

California Commercial Milk Production, Production Entering, Production Leaving, Net Milk Available, in Thousand Pounds, 2001-2005

Year	California Milk Production	Production Entering California	Production Leaving California	Net Milk Available in California
2001	33,183,393	840,655	434,823	33,738,766
2002	35,026,340	1,208,973	560,900	35,674,413
2003	35,393,369	1,187,717	514,266	36,066,820
2004	36,427,964	1,344,585	281,539	37,491,010
2005	37,521,450	1,220,251	299,443	38,442,258

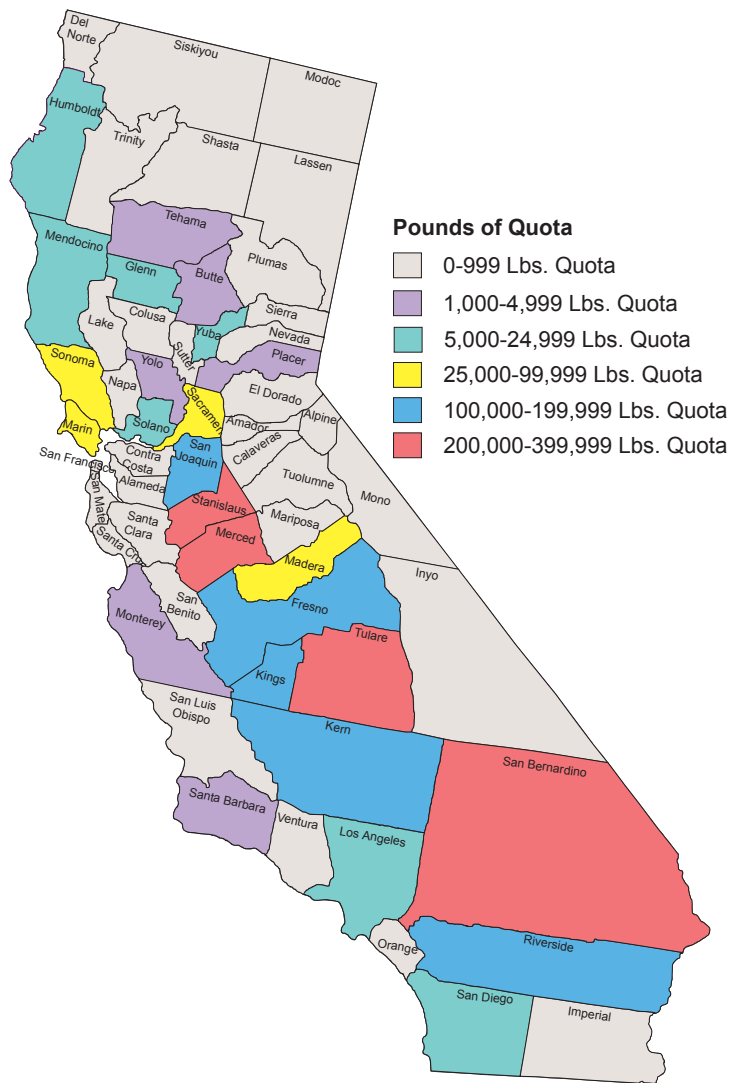
California Milk Production Entering California, Leaving California, 2001-2005





Quota in California & Quota Transfers

Where Is the Quota in California? California Pounds of Solids-Not-Fat Quota On A Daily Basis, December 2005



Quota Transfer Summary Summary of Quota Transfers and Sales, Based on Solids-Not-Fat, 2001-2005

Year	Number of Sellers	Number of Buyers	Average Price ^{1/}	SNF Transferred	Average Ratio
			(dollars)	(pounds)	
2001	58	92	\$421	54,321	2.45
2002	53	64	\$488	43,612	2.42
2003	80	103	\$455	93,151	2.46
2004	72	108	\$460	77,498	2.45
2005	65	79	\$478	60,243	2.44

^{1/} Sales without cows.



Class 1 Sales

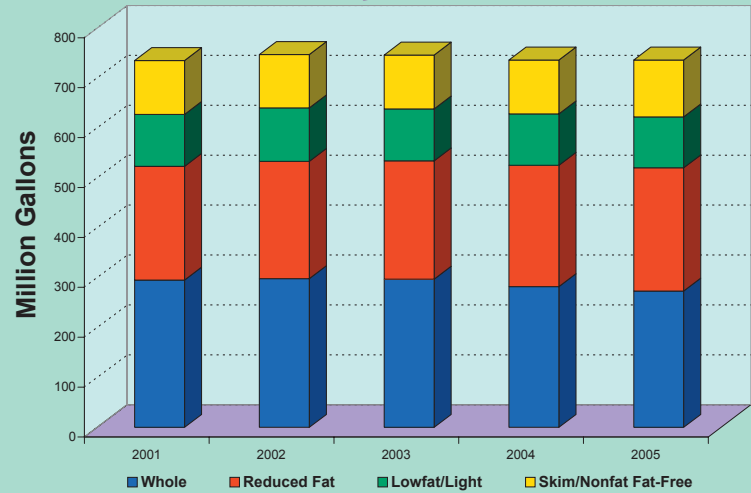


For 2005, overall Class 1 sales were down 0.2 percent, with sales of reduced fat and skim recording increased sales, while lowfat and half-and-half showed slight decreased sales, and whole milk sales were significantly down, compared to 2004 figures.

Sales of fluid Class 1 products made up 98 percent of all Class 1 sales: 36 percent whole, 33 percent reduced fat, 14 percent lowfat, and 15 percent skim. Half-and-half sales accounted for 2.3% of all Class 1 Sales.

*All sales can include Class 1 products made from non-pool milk.

**Sales of Fluid Class 1 Market Milk Products
California, 2001-2005**



California and Federal Milk Standards - The California Advantage

Milk Product	Calcium	Protein	Nonfat Solids
California Whole Milk	276 mg	7.9 g	8.70%
Federal Whole Milk	261 mg	7.5 g	8.25%
California Advantage	5%	5%	5%
California 2% Reduced Fat	317 mg	9.1 g	10%
Federal 2%	261 mg	7.5 g	8.25%
California Advantage	21%	21%	21%
California 1% Lowfat	348 mg	10 g	11%
Federal 1%	261 mg	7.5 g	8.25%
California Advantage	33%	33%	33%
California Nonfat	285 mg	8.2 g	9%
Federal Nonfat	261 mg	7.5 g	8.25%
California Advantage	9%	9%	9%

Note: These numbers reflect the minimum standards for processing milk in California and at the national level. Some manufacturers may process their milk above these minimum standards.





Class 1 Sales

Sales of Class 1 Market Milk Products in California, by Year, 2001-2005¹

Year	Whole Milk	Reduced Fat Milk	Lowfat Light Milk	Skim/Nonfat Fat-Free Milk	Subtotal Beverage Milks	Half and Half	Total Class 1 ^{2/}	Total Class 1 Milk Change From Prior Year
<i>Thousand Gallons</i>							<i>Percent</i>	
2001	294,776	227,821	103,897	107,892	734,386	13,318	747,708	0.6
2002	298,109	234,507	106,755	106,946	746,316	14,904	761,224	1.8
2003	297,489	236,836	103,869	108,250	746,444	16,644	763,094	0.2
2004	282,484	243,138	102,679	108,372	736,673	17,629	754,311	-1.2
2005	272,716	246,527	102,370	113,838	735,452	17,357	752,822	-0.2
2002								
January	24,816	19,280	8,855	8,920	61,871	1,093	62,964	-0.8
February	22,408	17,964	8,287	8,491	57,151	1,065	58,217	-0.7
March	24,978	20,049	9,165	9,318	63,510	1,174	64,685	-3.7
April	24,240	19,200	9,070	8,909	61,419	1,135	62,555	3.0
May	25,156	19,686	9,539	9,401	63,782	1,173	64,955	3.3
June	24,146	19,011	8,190	8,358	59,705	1,210	60,915	-1.1
July	25,162	19,649	7,938	7,965	60,714	1,249	61,963	3.9
August	26,027	20,406	8,531	8,281	63,246	1,270	64,517	3.8
September	24,647	19,635	9,900	9,084	63,266	1,264	64,530	4.0
October	25,859	20,198	9,583	10,006	65,646	1,362	67,009	3.4
November	24,962	19,604	8,984	9,332	62,882	1,448	64,330	3.4
December	25,707	19,824	8,713	8,879	63,122	1,461	64,584	3.6
2003								
January	25,118	19,839	9,145	9,522	63,623	1,312	64,936	3.1
February	23,026	18,340	8,363	8,871	58,599	1,300	59,900	2.9
March	25,496	20,404	9,416	9,852	65,168	1,377	66,545	2.9
April	24,391	19,360	8,578	9,016	61,345	1,341	62,686	0.2
May	25,291	20,257	9,247	9,707	64,502	1,403	65,906	1.5
June	24,314	19,368	7,965	8,402	60,049	1,387	61,436	0.9
July	24,684	19,829	7,634	7,883	60,031	1,385	61,416	-0.9
August	24,682	19,874	7,988	8,134	60,678	1,410	62,088	-3.8
September	24,502	19,714	9,197	9,477	62,890	1,520	64,411	-0.2
October	25,612	20,508	9,274	9,839	65,233	1,547	66,780	-0.3
November	24,208	19,062	8,434	8,748	60,453	1,623	62,076	-3.5
December	26,360	20,492	8,711	8,860	64,423	1,820	66,244	2.6
2004								
January	24,989	19,845	8,869	9,350	63,053	1,480	64,599	-0.5
February	22,904	18,541	8,240	8,709	58,394	1,442	59,893	0.0
March	24,369	20,684	9,334	9,802	64,188	1,587	65,840	-1.1
April	23,337	19,998	8,505	8,940	60,780	1,438	62,278	-0.7
May	22,324	19,572	8,914	9,529	60,338	1,346	61,733	-6.3
June	22,891	19,973	7,935	8,424	59,223	1,425	60,705	-1.2
July	23,364	20,727	7,592	7,976	59,659	1,387	61,107	-0.5
August	23,443	20,792	8,011	8,103	60,349	1,407	61,809	-0.5
September	23,224	20,866	9,194	9,476	62,759	1,406	64,226	-0.3
October	23,944	21,121	9,197	9,949	64,210	1,492	65,763	-1.5
November	23,387	20,331	8,723	9,287	61,729	1,637	63,433	2.2
December	24,500	20,892	8,244	8,888	62,525	1,612	64,210	-3.1
2005								
January	23,308	20,798	9,158	9,676	62,940	1,369	64,310	-0.4
February	21,143	18,926	8,343	8,934	57,347	1,261	58,609	-2.1
March	23,445	21,093	9,160	9,934	63,632	1,568	65,200	-1.0
April	22,245	20,238	8,864	9,695	61,041	1,452	62,494	0.3
May	22,301	20,341	9,009	9,767	61,418	1,443	62,863	1.8
June	22,320	20,308	7,942	8,969	59,539	1,428	60,968	0.4
July	22,576	20,463	7,418	8,148	58,604	1,369	59,974	-1.9
August	23,041	21,076	7,909	8,711	60,737	1,424	62,163	0.6
September	22,920	21,050	9,006	10,066	63,043	1,410	64,453	0.4
October	23,000	21,137	8,907	10,580	63,623	1,447	65,072	-1.1
November	22,460	20,121	8,479	9,903	60,964	1,611	62,575	-1.4
December	23,958	20,978	8,174	9,455	62,565	1,574	64,140	-0.1

^{1/} Monthly totals may not add up to annual totals due to rounding.^{2/} Miscellaneous Class 1 Products are included in the total.



Fluid Milk Sales Container Survey, October 2005

Fluid Milk Sales Container Survey for October 2005 Sales of Market Whole, Reduced Fat, Lowfat, and Skim Milks - October 2005

Reported by Number of Individual Units Sold With A Percent Comparison of Total Class 1 Sales

In October 2005, the Department requested all market milk handlers in California to supply data regarding sales of whole, reduced fat, lowfat, and skim milk, categorized by container size and composition, for the month of October 2005. The annual gathering of this data was initiated by the Department in 1951 and continued yearly until 1997, when the survey was put on hold due to a statistical database installation. Since the survey was resurrected in October 2002, the Department will continue to request the collection of this data on an annual basis for the month of October.

The attached summary has been provided for each California market milk handler in addition to being published in the Dairy Information Bulletin and 2006 Statistics Annual. The summary includes all container sizes and their characteristic, the number of units sold for each size container, and the percentage of October 2005 Class 1 sales represented by each size container. For this summary, all sales were expressed in the number of units sold in each particular container size - not in gallons of milk sold in that size container. However, the percentages are reported as an approximate percentage of the total gallons sold for each size container. For example, the half gallon plastic containers totaled 9.697 million containers sold, which represented 7.54% of the reported Class 1 sales totals for October 2005.

The top three containers reported in this survey for market milk sold in California were:

- Gallon plastic containers (70%)
- Half gallon paper containers (7.4%)
- Half gallon plastic containers (7.5%)

Container Size & Characteristic	WHOLE	2% REDUCED FAT	1% LOWFAT	SKIM	TOTAL NUMBER OF UNITS	PERCENT OF OCTOBER 2005 CLASS 1 SALES
IN NUMBER OF UNITS SOLD						PERCENT
6 Gallon						6 Gallon
Bag	20,548	13,370	8,660	3,074	45,652	0.43%
Plastic	14,104	24,159	*	*	45,403	0.42%
TOTAL 6 GALLON UNITS					91,055	0.85%
5 Gallon						5 Gallon
Bag	3,762	3,151	6,432	1,845	15,190	0.12%
Plastic	*	*	*	*	10,835	0.08%
TOTAL 5 GALLON UNITS					26,025	0.20%
3 Gallon						3 Gallon
Bag	*	388	*	204	722	0.00%
Plastic	0	0	0	0	0	0.00%
TOTAL 3 GALLON UNITS					722	0.00%
1 Gallon						1 Gallon
Glass	0	0	0	0	0	0.00%
Paper	*	*	0	*	38,236	0.06%
Plastic	19,088,184	15,987,004	4,526,108	5,280,900	44,882,196	69.83%
TOTAL 1 GALLON UNITS					44,920,432	69.89%
1/2 Gallon						1/2 Gallon
Glass	22,679	11,006	1,998	17,073	52,756	0.04%
Paper	2,098,988	2,958,083	2,039,875	2,425,646	9,522,592	7.41%
Plastic	3,308,789	3,320,536	1,359,818	1,708,347	9,697,490	7.54%
TOTAL 1/2 GALLON UNITS					19,272,838	14.99%





Fluid Milk Sales Container Survey, October 2005

Container Size & Characteristic	WHOLE	2% REDUCED FAT	1% LOWFAT	SKIM	TOTAL NUMBER OF UNITS	PERCENT OF OCTOBER 2005 CLASS 1 SALES
	IN NUMBER OF UNITS SOLD					PERCENT
Quart						Quart
Glass	17,757	11,158	0	11,935	40,850	0.02%
Paper	1,117,797	1,292,165	1,117,724	921,777	4,449,463	1.73%
Plastic	526,083	514,405	180,247	241,257	1,461,992	0.57%
TOTAL 1 QUART UNITS					5,952,305	2.32%
Pint						Pint
Paper	1,175,875	344,381	425,791	186,486	2,132,533	0.41%
Plastic	1,962,670	3,721,268	726,907	208,941	6,619,786	1.29%
TOTAL 1 PINT UNITS					8,752,319	1.70%
1/3 Quart						1/3 Quart
Paper	889,231	1,122,060	733,210	153,593	2,898,094	0.38%
Plastic	95,390	71,183	59,982	0	226,555	0.03%
TOTAL 1/3 QUART UNITS					3,124,649	0.41%
1/2 Pint						1/2 Pint
Paper	3,064,432	11,544,519	29,470,510	29,591,886	73,671,347	7.16%
Plastic	*	*	801,564	0	840,005	0.08%
TOTAL 1/2 PINT UNITS					74,511,352	7.25%
4 Oz. Pouch						4 Oz.
Paper	533,040	894,080	0	387,267	1,814,387	0.09%
Plastic	0	0	0	*	2,119,966	0.10%
TOTAL 4 OZ. UNITS					3,934,353	0.19%
8 Oz. Pouch						4 Oz.
Paper	0	0	0	0	0	0.00%
Plastic	0	*	3,364,879	11,330,187	19,021,060	1.85%
TOTAL 8 OZ. UNITS					19,021,060	1.85%
12 Oz.						4 Oz.
Paper	0	0	0	0	0	0.00%
Plastic	258,431	154,569	195,445	0	608,445	0.09%
TOTAL 12 OZ. UNITS					608,445	0.09%
14 Oz.						4 Oz.
Paper	0	0	0	0	0	0.00%
Plastic	86,648	1,422,096	0	0	1,508,744	0.26%
TOTAL 14 OZ. UNITS					1,508,744	0.26%
Other Sizes/Types of Container						Other Sizes
330 Gal Tote	10	0	0	0	10	0.01%
16 oz Plastic	764	0	0	0	764	0.00%
TOTAL OTHER SIZE UNITS					774	0.01%

* Amounts included in total, but not published for proprietary reasons

Survey data was collected from California market milk handlers at the request of the California Department of Food and Agriculture. While data is submitted from reliable sources, no representation is made as to the complete accuracy of the data reported. Data is published subject to errors, revisions, or withdrawals without notice.





Class 1 Sales, by Marketing Area

Sales of Selected Class 1 Products in California, by Marketing Area, 2001-2005

Products & Marketing Areas	SALES				
	2001	2002	2003	2004	2005
	<i>Gallons</i>				
Whole Milk					
Northern California	109,094,532	111,380,397	111,237,341	107,290,845	105,436,465
Southern California	185,682,127	186,728,249	186,252,049	175,193,332	167,280,007
State Total	294,776,659	298,108,646	297,489,390	282,484,177	272,716,472
Reduced Fat Milk					
Northern California	93,346,942	95,174,621	93,946,797	96,966,471	98,158,721
Southern California	134,473,805	139,332,305	142,889,248	146,171,325	148,368,690
State Total	227,820,747	234,506,926	236,836,045	243,137,796	246,527,411
Lowfat/Light Milk					
Northern California	51,830,532	51,043,931	48,839,352	49,894,624	49,929,130
Southern California	52,066,034	55,710,944	55,029,563	52,784,535	52,441,345
State Total	103,896,566	106,754,875	103,868,915	102,679,159	102,370,475
Skim/Nonfat/Fat Free Milk					
Northern California	42,469,526	38,933,104	40,805,552	41,395,863	44,190,050
Southern California	65,422,657	68,012,423	67,444,199	66,975,775	69,648,066
State Total	107,892,183	106,945,527	108,249,751	108,371,638	113,838,116
Beverage Milks Subtotal					
Northern California	296,741,532	296,532,053	294,829,042	295,547,803	297,714,366
Southern California	437,644,623	449,783,921	451,615,059	441,124,967	437,738,108
State Total	734,386,155	746,315,974	746,444,101	736,672,770	735,452,474
Half-and-Half					
Northern California	6,788,978	7,612,521	7,720,056	8,245,315	8,148,512
Southern California	6,528,812	7,291,485	8,923,612	9,383,838	9,208,883
State Total	13,317,790	14,904,006	16,643,668	17,629,153	17,357,395
Miscellaneous Class 1					
Northern California	3,943	3,692	5,380	7,676	9,683
Southern California	475	611	1,094	1,561	1,968
State Total	4,418	4,303	6,474	9,237	11,651
TOTAL CLASS 1					
Northern California	303,534,453	304,148,266	302,554,478	303,800,794	305,872,561
Southern California	444,173,910	457,076,017	460,539,765	450,510,366	446,948,959
STATE TOTALS	747,708,363	761,224,283	763,094,243	754,311,160	752,821,520



Manufacture of Dairy Products

California continues to lead the nation in the production of many manufactured dairy products, such as: butter, nonfat dry milk (NFDM), Mozzarella cheese, and whey protein concentrate.

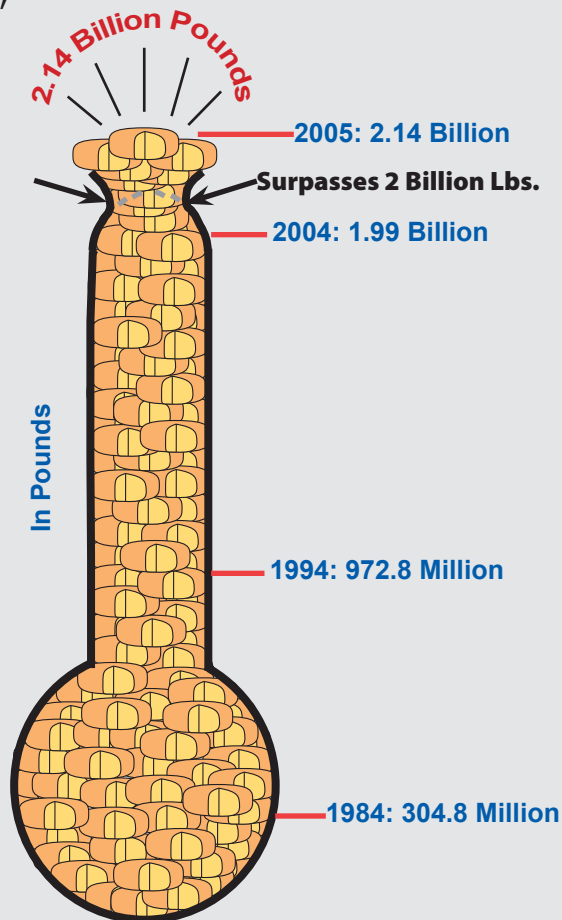
Class 2 (Soft Dairy Products):

Total cottage cheese production increased 0.5 percent to 99.9 million pounds. Yogurt production was on the increase, up 12.7 percent compared to 2004. Sour cream and sour cream dressing production increased sharply by 15.1 percent, while buttermilk showed a 7.5 percent increase in production over last year. Other cream production decreased 13.0 percent and manufacturing cream decreased 3.4 percent compared to 2004.

Class 3 (Frozen Dairy Products):

For 2005, total frozen production increased 7.2 percent to 165.1 million gallons. The shares of the total frozen product production were as follows: 79 percent ice cream, 14 percent ice milk, 4 percent sherbet, and 3 percent frozen yogurt.

California Cheese Production, 1984-2005



* All product totals can include products made from non-pool milk.



Class 4a (Butter and Nonfat Dry Milk):

Butter production was up in 2005, showing a 5.7 increase to 683 million pounds. Nonfat dry milk production showed a 31.8 decrease in production (partly attributed to increased production of Skim Milk Powders which do meet USDA definition of NFDM and are not included in NFDM totals).

Class 4b (Cheese and Whey Byproducts):

The year 2005 showed a 7.1 percent increase in total cheese production to a record 2.14 billion pounds. The shares of total cheese production were: Mozzarella at 45 percent (up 8.9 percent), Cheddar at 24 percent (down 2.9 percent), Monterey at 16 percent (up 14.3 percent), Hispanic at 5 percent (up 8.2 percent). Provolone and Parmesan cheeses accounted for 5 percent of total cheese production.





Class 2 Production

Production of Class 2 Products in California, 2001-2005

Month	2001	2002	2003	2004	2005	2001	2002	2003	2004	2005
Dry Curd Cottage Cheese						Cottage Cheese				
	<i>Pounds</i>					<i>Pounds</i>				
Jan	3,199,940	3,687,512	3,335,208	3,274,542	3,554,866	2,571,161	2,657,924	2,641,103	2,542,374	2,508,342
Feb	3,338,967	3,161,800	3,075,575	3,318,079	3,560,121	2,501,869	2,322,574	2,476,992	2,512,125	2,471,393
Mar	3,551,157	3,389,443	3,217,620	3,919,087	3,808,269	2,657,663	2,571,881	2,499,508	3,043,896	2,757,687
Apr	3,348,254	3,452,496	3,386,313	3,443,901	3,438,310	2,554,865	2,594,946	2,598,285	2,646,420	2,544,367
May	3,820,842	3,572,288	3,224,219	3,746,047	3,638,597	3,023,637	2,742,945	2,622,271	2,586,179	2,567,783
Jun	3,235,261	3,347,707	3,386,050	3,563,713	4,064,169	2,565,171	2,467,921	2,640,844	2,732,772	2,902,787
Jul	3,590,079	3,940,424	3,541,053	3,589,916	3,317,131	2,951,259	2,881,578	2,794,467	2,811,175	2,492,161
Aug	3,639,714	3,758,389	3,311,925	3,799,702	4,258,590	2,835,958	2,709,742	2,556,979	2,785,302	2,964,648
Sep	3,185,898	3,604,864	3,413,717	3,491,139	3,707,769	2,512,816	2,648,582	2,719,553	2,626,883	2,691,456
Oct	3,518,159	3,773,039	3,714,608	3,574,690	3,434,057	2,777,301	2,820,862	2,806,436	2,580,728	2,447,909
Nov	3,076,941	2,926,073	3,096,578	3,217,824	3,784,222	2,481,179	2,227,451	2,409,389	2,373,412	2,596,569
Dec	2,751,427	3,144,501	3,188,002	2,983,842	3,233,433	2,256,206	2,439,375	2,523,272	2,283,112	2,283,103
Total	40,256,639	41,758,536	39,890,868	41,922,482	43,799,534	31,689,085	31,085,781	31,289,099	31,524,378	31,228,205
Lowfat Cottage Cheese						Nonfat Cottage Cheese				
	<i>Pounds</i>					<i>Pounds</i>				
Jan	4,364,521	4,516,606	4,485,980	4,364,231	4,717,939	1,031,904	1,107,425	983,702	922,576	1,011,422
Feb	4,354,491	3,983,953	4,150,433	4,459,024	4,770,151	991,764	970,893	901,591	888,512	931,816
Mar	4,568,775	4,371,831	4,366,557	5,420,938	4,969,556	1,132,537	1,023,747	914,755	1,131,439	1,042,121
Apr	4,431,332	4,446,253	4,603,116	4,755,992	4,685,827	1,087,924	1,127,935	956,943	936,439	947,685
May	5,096,812	4,625,192	4,447,923	5,055,070	4,736,952	1,282,756	1,085,842	918,657	987,578	1,002,078
Jun	4,426,629	4,169,644	4,600,029	4,799,728	5,262,355	1,035,860	978,550	976,460	940,277	1,019,547
Jul	4,735,840	4,922,741	4,843,516	4,732,867	4,483,061	1,182,501	1,134,065	964,507	1,031,908	911,627
Aug	4,836,160	4,684,970	4,594,123	5,193,843	5,359,339	1,228,158	1,111,291	865,838	958,032	1,207,576
Sep	4,313,876	4,621,407	4,653,449	4,739,694	4,804,970	1,024,185	1,074,884	1,000,485	985,502	922,241
Oct	4,789,110	4,722,739	4,930,104	4,609,321	4,528,254	1,173,854	1,118,194	1,073,074	962,851	890,398
Nov	4,071,515	3,897,914	4,162,206	4,384,698	4,461,965	941,348	831,077	863,125	841,768	1,032,466
Dec	3,699,711	3,875,961	4,239,657	3,900,797	4,129,169	916,310	926,909	860,978	806,744	820,981
Total	53,688,772	52,839,211	54,077,093	56,416,203	56,909,538	13,029,101	12,490,812	11,280,115	11,393,626	11,739,958
Total Cottage Cheese						Buttermilk				
	<i>Pounds</i>					<i>Gallons</i>				
Jan	7,967,586	8,281,955	8,110,785	7,829,181	8,237,703	667,528	771,799	665,961	663,382	657,766
Feb	7,848,124	7,277,420	7,529,016	7,859,661	8,173,360	551,774	599,810	634,533	648,234	652,102
Mar	8,358,975	7,967,459	7,780,820	9,596,273	8,769,364	724,323	712,743	729,331	743,446	764,071
Apr	8,074,121	8,169,134	8,158,344	8,338,851	8,177,879	689,630	677,235	675,832	697,862	677,490
May	9,403,205	8,453,979	7,988,851	8,628,827	8,306,813	718,919	701,411	686,520	709,338	702,197
Jun	8,027,660	7,616,115	8,217,333	8,472,777	9,184,689	681,433	676,167	704,800	710,267	701,234
Jul	8,869,600	8,938,384	8,602,490	8,575,950	7,886,849	679,750	677,590	681,730	696,046	804,591
Aug	8,900,276	8,506,003	8,016,940	8,937,177	9,531,563	698,150	658,514	682,712	695,795	834,037
Sep	7,850,877	8,344,873	8,373,487	8,352,079	8,418,667	662,210	693,369	686,797	698,641	766,874
Oct	8,740,265	8,661,795	8,809,614	8,152,900	7,866,561	674,472	705,204	704,503	662,573	777,604
Nov	7,494,042	6,956,442	7,434,720	7,599,878	8,091,000	719,909	637,091	693,766	716,619	836,821
Dec	6,872,227	7,242,245	7,623,907	6,990,653	7,233,253	694,706	700,851	741,514	725,323	823,646
Total	98,406,958	96,415,804	96,646,307	99,334,207	99,877,701	8,162,804	8,211,784	8,287,999	8,367,526	8,998,433

Continued on Next Page





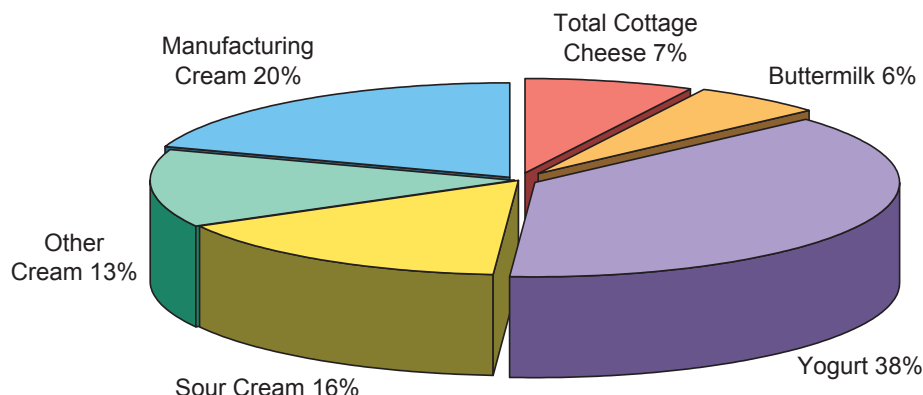
Class 2 Production - Continued

Production of Class 2 Products in California, 2001-20045- Continued

Month	2001	2002	2003	2004	2005	2001	2002	2003	2004	2005
Manufacturing Cream					Yogurt Production ^{1/}					
			Gallons			Gallons	Pounds			
Jan		2,980,214	2,849,133	3,046,390	2,258,824	2,328,900	39,114,350	42,581,317	45,144,852	41,211,042
Feb		3,155,560	2,796,450	2,680,029	2,405,028	2,176,315	38,263,765	42,579,333	34,419,189	40,246,835
Mar		3,313,169	2,811,267	2,683,164	2,458,236	2,611,364	40,603,031	44,534,967	44,248,786	45,462,036
Apr		3,256,049	2,803,150	2,733,865	2,283,734	2,590,920	37,020,508	38,116,467	39,100,026	45,142,452
May		2,994,755	2,742,515	2,513,448	2,403,060	2,837,074	41,436,644	42,207,409	38,689,384	44,285,765
Jun		3,021,227	2,496,348	2,493,813	2,007,656	2,561,124	32,306,082	35,143,715	38,134,530	44,180,416
Jul		3,164,192	2,503,758	2,521,515	1,877,805	2,614,971	36,559,231	37,457,809	35,325,538	41,745,891
Aug		2,735,954	2,559,751	2,604,023	1,897,808	2,419,673	39,904,266	42,249,947	40,504,859	48,799,214
Sep		2,632,667	2,233,019	2,475,799	1,869,688	2,589,796	41,145,630	47,238,730	38,069,391	45,579,429
Oct		2,580,866	2,448,227	2,525,320	3,454,004	2,545,236	39,497,002	39,677,041	35,434,920	41,473,322
Nov		2,619,155	2,293,280	2,130,633	3,285,666	2,033,751	33,514,057	35,519,087	34,179,401	40,459,443
Dec		2,713,761	3,179,389	2,191,616	3,357,417	2,082,314	35,118,153	32,621,419	31,050,927	33,405,741
Total	0	35,167,569	31,716,287	30,599,615	29,558,926	29,391,438	454,482,719	479,927,241	454,301,803	511,991,586
Sour Cream & Sour Cream Dressing					Other Cream					
			Gallons				Gallons			
Jan	1,591,628	1,585,155	1,769,144	1,512,230	1,696,310	1,705,122	1,046,899	1,401,636	1,521,955	1,434,818
Feb	1,343,212	1,537,993	1,455,945	1,512,212	1,764,284	1,622,424	1,134,352	1,301,676	1,762,631	1,490,106
Mar	1,651,207	1,733,171	1,692,586	1,963,642	2,004,546	1,754,682	1,183,765	1,501,759	2,066,768	1,764,562
Apr	1,675,252	1,601,188	1,744,350	1,609,397	1,773,816	1,601,893	1,308,088	1,817,613	1,971,269	1,675,638
May	1,775,985	1,852,195	1,635,354	1,651,602	2,058,141	1,677,379	1,693,132	1,635,631	1,784,896	1,700,598
Jun	2,024,357	1,704,598	1,686,374	1,783,813	2,070,682	1,685,620	1,576,077	1,652,729	1,955,841	1,544,562
Jul	1,530,427	1,685,571	1,636,223	1,487,796	1,748,981	1,618,062	1,558,507	1,828,657	1,881,642	1,434,907
Aug	1,672,888	1,683,432	1,645,375	1,765,686	2,115,922	1,713,744	1,364,650	1,582,713	1,834,544	1,681,938
Sep	1,822,643	1,559,469	1,630,292	1,554,475	1,747,548	1,526,372	1,480,830	1,692,896	1,765,626	1,635,428
Oct	2,418,035	1,805,672	1,775,309	1,746,639	1,928,282	1,828,738	1,530,672	1,862,840	1,954,841	1,705,056
Nov	2,599,834	1,879,305	1,801,789	2,289,992	2,850,813	2,442,229	1,872,439	2,125,780	2,528,052	2,019,021
Dec	1,919,962	1,892,251	1,887,113	1,829,323	2,075,275	2,239,413	1,731,974	2,128,962	2,158,274	2,093,294
Total	22,025,430	20,520,000	20,359,854	20,706,807	23,834,600	21,415,678	17,481,385	20,532,892	23,186,339	20,179,928

^{1/} Prior to 2002, figures reported in gallons.

Class 2 Products in 2005



California Dairy Processing Plant Locations

(by Product Category)



Fluid Milk Plant



Class 2 Products: Yogurt, Cottage Cheese, Buttermilk, Creams, Eggnog



Frozen Dairy Products



Dry Milk Products: Dry Whey, Whey Protein Concentrate, and Dry, Condensed, Evaporated Milks

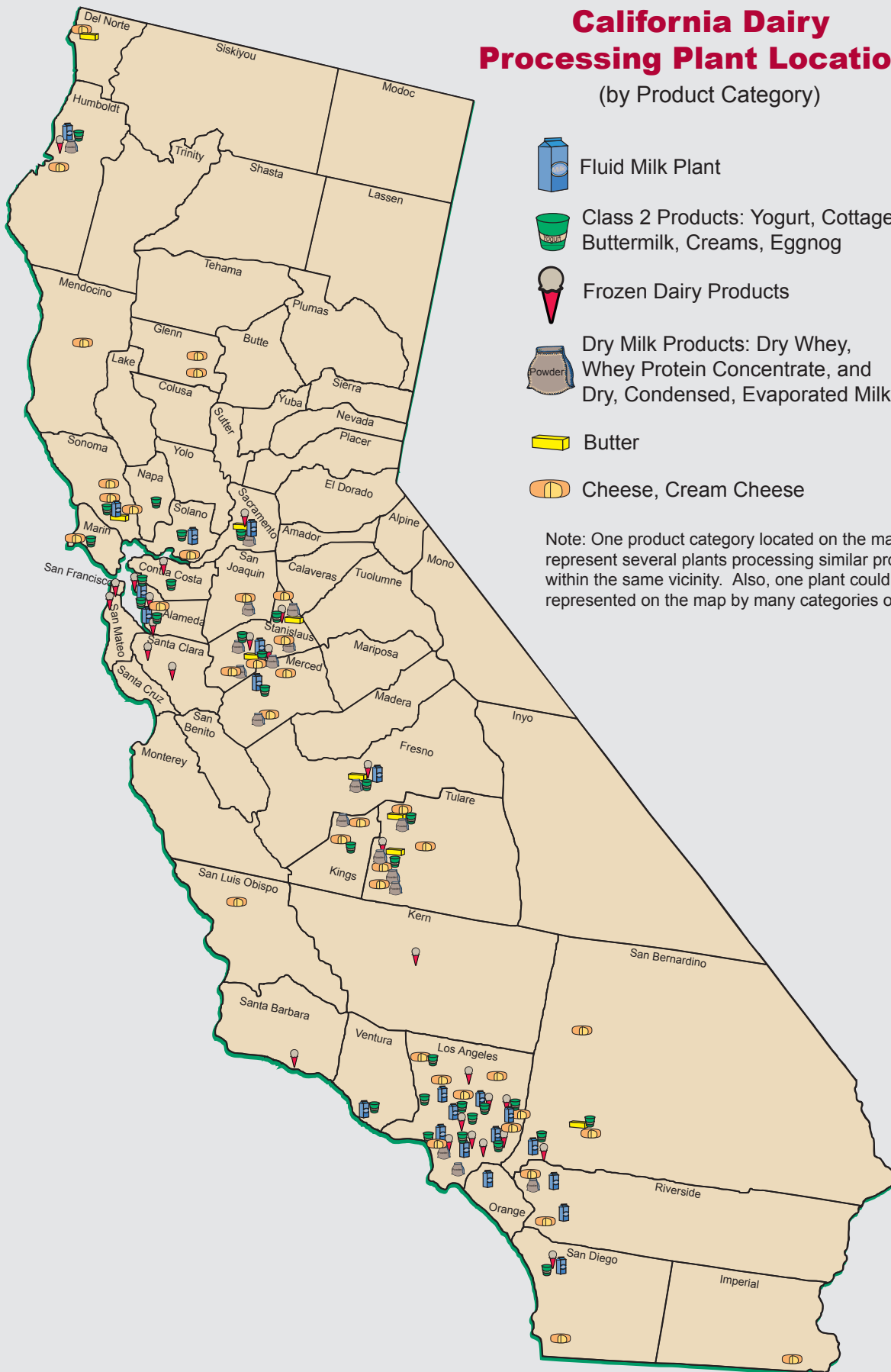


Butter



Cheese, Cream Cheese

Note: One product category located on the map may represent several plants processing similar products within the same vicinity. Also, one plant could be represented on the map by many categories of products.





Class 3 Production

Production of Class 3 Products in California, 2001-2005

Month	2001	2002	2003	2004	2005	2001	2002	2003	2004	2005
Ice Cream						Ice Milk ^{1/}				
	Gallons					Gallons				
Jan	8,178,988	8,207,325	7,830,808	6,216,956	5,978,457	2,037,135	2,426,217	2,255,752	1,899,195	1,443,580
Feb	8,838,827	9,375,092	9,092,266	8,074,961	8,032,103	2,074,568	2,343,469	2,121,337	2,164,457	1,781,536
Mar	12,156,413	12,096,037	10,697,273	11,919,064	11,607,076	2,612,607	2,880,657	2,102,387	2,556,875	2,130,684
Apr	11,448,912	11,540,287	11,236,086	10,310,028	10,902,800	2,893,399	2,684,144	2,790,182	2,432,082	1,957,578
May	12,366,647	12,801,718	11,249,690	11,634,865	11,820,532	3,019,615	2,715,434	2,876,657	2,617,310	2,262,103
Jun	13,568,068	13,204,516	13,323,661	12,040,903	14,263,631	3,293,783	3,327,584	3,156,812	2,528,381	2,293,390
Jul	11,598,900	12,466,101	11,491,340	10,017,929	12,310,430	2,968,007	3,292,316	3,160,369	2,729,662	2,259,434
Aug	12,584,928	11,642,564	11,211,824	10,835,323	15,204,138	3,001,724	2,953,478	2,875,896	2,660,236	2,241,451
Sep	10,609,713	10,507,723	10,785,922	10,914,981	12,705,775	2,361,011	2,640,847	2,911,671	2,153,555	1,816,604
Oct	9,379,516	8,832,147	9,275,876	8,922,157	10,505,448	2,319,530	2,464,073	2,418,027	1,849,254	1,977,868
Nov	7,626,568	7,624,816	8,369,462	8,101,543	9,974,988	1,892,926	1,687,546	2,007,827	1,734,899	1,717,968
Dec	6,343,752	6,673,571	6,864,096	6,713,785	7,082,226	1,809,039	2,228,472	1,921,412	1,732,232	1,308,243
Total	124,701,232	124,971,897	121,428,304	115,702,496	130,387,603	30,283,345	31,644,238	30,598,329	27,058,138	23,190,440
Sherbet						Frozen Yogurt ^{2/}				
	Gallons					Gallons				
Jan	403,203	406,891	363,983	292,652	403,180	511,477	377,432	413,184	337,960	351,229
Feb	516,680	651,662	529,839	481,385	580,292	547,368	371,634	391,819	359,842	312,738
Mar	686,401	868,935	768,724	705,881	755,176	645,355	544,826	441,186	444,318	368,864
Apr	605,809	748,753	718,800	645,220	558,220	669,605	498,690	468,096	446,438	396,517
May	773,536	748,227	708,399	684,540	607,058	677,754	533,373	504,821	460,382	368,939
Jun	778,075	950,868	869,168	961,415	788,385	662,742	591,541	546,725	465,904	451,026
Jul	797,464	758,143	693,033	627,133	691,924	685,030	552,402	486,813	377,110	412,389
Aug	674,907	821,288	585,847	646,438	970,863	658,461	699,438	437,525	494,981	400,554
Sep	591,507	631,547	476,701	604,555	900,981	470,378	493,739	430,592	461,738	414,797
Oct	466,670	626,693	547,842	459,881	358,404	494,685	417,451	394,467	287,798	359,166
Nov	398,721	259,844	286,625	403,430	298,457	417,912	342,126	353,429	304,754	342,342
Dec	260,945	357,998	206,863	175,022	252,345	290,106	294,194	277,594	206,189	199,650
Total	6,953,918	7,830,849	6,755,824	6,687,552	7,165,285	6,730,872	5,716,845	5,146,250	4,647,414	4,378,210
Total Frozen Products										
	Gallons									
Jan	11,130,803	11,417,866	10,863,727	8,746,763	8,176,446					
Feb	11,977,443	12,741,857	12,135,262	11,080,645	10,706,669					
Mar	16,100,777	16,390,455	14,009,569	15,626,139	14,861,800					
Apr	15,617,725	15,471,874	15,213,164	13,833,769	13,815,114					
May	16,837,551	16,798,753	15,339,568	15,397,097	15,058,633					
Jun	18,302,668	18,074,508	17,896,365	15,996,604	17,796,432					
Jul	16,049,402	17,068,962	15,831,555	13,751,834	15,674,177					
Aug	16,920,020	16,116,768	15,111,091	14,636,978	18,817,005					
Sep	14,032,608	14,273,856	14,604,887	14,134,828	15,838,157					
Oct	12,660,401	12,340,363	12,636,212	11,519,090	13,200,886					
Nov	10,336,128	9,914,332	11,017,343	10,544,625	12,333,755					
Dec	8,703,841	9,554,235	9,269,965	8,827,228	8,842,463					
Total	168,669,367	170,163,828	163,928,707	154,095,600	165,121,538					

^{1/} Includes Light Dairy Dessert and Nonfat Ice Cream.^{2/} Includes nonfat and reduced fat yogurts.



Class 4a/4b Production

Production of Class 4a Products in California, 2001-2005

Month	2001	2002	2003	2004	2005	2001	2002	2003	2004	2005
Butter						Nonfat Dry Milk for Human Consumption				
	<i>Pounds</i>					<i>Pounds</i>				
Jan	35,428,036	34,575,020	39,524,507	32,958,696	34,045,410	59,171,765	59,502,320	61,730,064	62,911,908	39,365,176
Feb	31,915,132	31,955,847	33,639,838	31,045,809	31,364,520	54,361,886	54,494,089	62,608,144	59,146,911	41,553,666
Mar	30,157,259	35,826,443	34,791,012	28,754,306	34,504,955	58,591,525	67,244,162	69,557,819	62,940,512	43,959,258
Apr	28,768,712	35,024,117	34,344,342	31,327,685	32,834,652	60,317,112	68,216,615	69,456,014	66,100,882	38,645,153
May	26,867,027	35,149,886	32,883,888	31,540,227	30,903,999	61,772,603	71,840,478	67,483,213	70,399,660	42,922,543
Jun	23,176,681	28,587,021	23,008,647	29,976,005	32,217,672	59,235,508	68,278,434	59,693,307	68,151,913	46,887,207
Jul	23,516,102	27,864,668	22,695,694	30,398,453	31,492,143	57,043,820	63,833,850	55,994,299	66,019,089	38,759,814
Aug	22,977,605	30,045,599	22,841,989	31,753,592	31,886,556	54,838,286	60,704,521	57,108,640	64,181,225	37,698,760
Sep	23,153,873	28,548,596	25,141,306	34,033,876	35,294,621	52,961,734	54,980,683	50,939,079	59,929,429	35,009,310
Oct	30,191,579	28,769,402	30,483,057	36,241,101	36,216,419	55,292,096	59,328,705	57,227,595	65,115,743	40,490,869
Nov	29,136,065	29,843,885	30,591,432	30,655,194	36,280,628	57,298,180	56,183,927	60,447,925	53,324,767	50,985,022
Dec	35,812,198	35,838,013	33,887,383	37,283,667	40,829,043	63,573,804	66,112,753	66,057,173	44,518,108	50,175,154
Total	341,100,269	382,028,497	363,833,095	385,968,611	407,870,618	694,458,319	750,720,537	738,303,272	742,740,147	506,451,932

Dry Buttermilk						Condensed Skim & Evaporated				
	<i>Pounds</i>					<i>Pounds</i>				
Jan	3,369,975	3,234,182	3,333,687	2,765,335	2,783,041	61,495,927	100,737,967	92,331,811	93,126,531	79,841,241
Feb	2,817,800	2,680,133	3,019,985	2,529,740	2,388,937	51,687,923	95,276,956	85,743,632	88,961,542	69,135,566
Mar	2,807,682	3,183,103	2,804,469	2,264,019	2,633,229	54,549,196	114,319,566	106,459,184	126,452,840	92,018,049
Apr	2,694,206	3,232,022	3,141,076	2,472,322	2,748,742	75,622,568	104,096,048	110,416,044	135,166,212	90,928,272
May	2,449,384	2,954,448	2,955,085	2,488,797	2,380,685	78,494,454	114,096,820	121,391,284	111,419,357	98,691,476
Jun	2,021,307	2,442,383	2,113,979	2,348,327	2,305,127	85,097,873	116,028,741	117,085,064	77,443,231	94,465,800
Jul	2,120,537	2,501,576	1,873,013	2,402,384	2,459,263	82,654,592	118,445,073	120,330,993	83,357,040	96,188,516
Aug	1,949,814	2,490,142	1,977,990	2,372,633	2,209,467	112,931,060	123,955,988	126,924,497	87,712,555	101,399,559
Sep	1,917,112	2,218,416	1,911,146	2,458,319	2,770,524	102,113,991	111,265,648	123,876,744	83,852,756	95,332,534
Oct	2,546,939	2,483,883	2,547,904	2,486,073	2,856,311	107,774,421	111,829,811	124,928,764	79,286,157	97,952,590
Nov	2,630,648	2,290,158	2,329,159	2,489,350	2,857,722	109,070,665	117,487,929	107,183,728	77,040,517	88,052,647
Dec	2,937,073	3,084,189	3,165,432	2,984,288	3,286,566	98,294,987	105,773,819	97,103,228	69,848,390	81,844,673
Total	30,262,477	32,794,635	31,172,925	30,061,587	31,679,614	1,019,787,657	1,333,314,366	1,333,774,973	1,113,667,128	1,085,850,923

Class 4b Production

Whey Protein Concentrate						Dry Whey				
	<i>Pounds</i>					<i>Pounds</i>				
Jan	8,190,261	7,460,450	10,533,521	10,984,322	9,489,661	11,461,449	12,099,935	12,688,455	9,610,338	8,671,410
Feb	7,348,862	7,448,481	9,671,641	9,215,720	8,534,779	10,939,836	10,506,795	11,019,153	9,159,882	8,952,569
Mar	8,389,632	7,563,080	9,437,340	9,628,836	9,634,434	12,128,308	13,195,396	11,708,223	9,074,380	9,361,189
Apr	7,901,300	7,931,290	10,219,822	10,284,379	10,805,015	11,807,113	11,706,131	8,978,847	10,977,687	10,264,480
May	8,010,683	7,990,085	10,084,098	10,066,934	8,785,523	10,696,216	12,639,907	9,816,089	9,314,681	10,497,231
Jun	7,999,466	8,140,750	9,166,048	9,698,222	9,723,162	11,099,275	12,838,590	10,589,029	9,205,123	10,033,074
Jul	7,948,456	8,849,847	9,612,127	10,447,163	10,018,074	10,268,603	11,641,747	9,745,289	9,978,013	9,968,362
Aug	7,934,003	9,091,394	10,030,360	9,237,671	8,686,060	10,344,147	12,466,556	8,290,558	11,526,875	10,799,895
Sep	7,544,681	8,540,712	10,021,768	9,770,009	10,829,655	9,975,140	13,284,773	9,309,363	10,491,413	10,140,739
Oct	7,518,212	9,526,660	9,205,126	9,686,104	11,292,407	10,003,164	13,991,157	10,370,988	9,441,830	10,400,200
Nov	7,287,739	9,457,730	8,910,963	9,556,228	10,070,683	10,897,849	13,279,544	10,269,285	9,347,184	12,050,010
Dec	7,739,714	10,589,306	10,102,902	10,040,027	11,539,697	10,929,206	13,228,953	11,192,319	10,201,677	8,077,107
Total	93,813,009	102,589,785	116,995,716	118,615,615	119,409,150	130,550,306	150,879,484	123,977,598	118,329,083	119,216,266





Class 4b Production

Production of Class 4b Products in California, 2001-2005

Month	2001	2002	2003	2004	2005	2001	2002	2003	2004	2005
Monterey Jack Cheese					Cheddar Cheese					
	<i>Pounds</i>					<i>Pounds</i>				
Jan	13,705,536	17,646,585	18,744,265	23,645,344	25,586,498	44,192,538	46,678,458	48,766,405	47,149,028	47,382,324
Feb	13,502,935	15,502,465	18,235,431	22,746,477	22,595,503	39,926,151	42,863,614	42,121,033	43,940,944	43,097,647
Mar	14,619,936	17,467,780	23,311,289	25,654,134	27,591,069	43,658,377	49,300,637	44,983,742	44,063,698	46,316,541
Apr	14,769,748	17,052,277	21,917,485	21,223,316	27,952,247	44,987,437	47,292,894	43,401,005	50,615,324	45,900,799
May	13,533,662	18,682,452	20,944,238	22,904,777	30,283,577	48,854,309	49,491,155	47,706,166	47,780,102	46,373,809
Jun	14,635,489	18,797,095	21,766,513	23,262,366	28,231,850	51,780,507	46,795,952	44,094,721	43,304,356	45,070,934
Jul	15,275,671	21,273,206	23,463,798	23,383,176	27,971,863	45,035,417	43,710,138	42,230,827	44,251,785	41,135,299
Aug	14,935,867	19,317,717	20,934,198	25,198,498	29,892,900	45,060,098	45,754,271	45,504,347	40,425,579	40,322,325
Sep	14,031,902	18,783,551	22,839,170	24,348,566	26,611,124	47,221,774	50,666,001	40,389,613	41,813,575	41,423,154
Oct	16,405,129	20,836,157	24,901,648	26,380,514	28,675,401	48,700,008	44,548,815	40,292,906	43,791,071	41,661,625
Nov	17,814,406	19,052,089	24,790,032	24,809,744	28,461,066	43,916,076	45,610,493	39,256,133	44,344,402	41,799,744
Dec	18,150,493	19,564,436	24,066,080	27,099,827	28,226,696	48,723,394	48,856,156	44,969,125	46,838,113	42,138,738
Total	181,380,774	223,975,810	265,914,147	290,656,739	332,079,794	552,056,086	561,568,584	523,716,023	538,317,977	522,622,939
Mozzarella Cheese					Provolone					
	<i>Pounds</i>					<i>Pounds</i>				
Jan	64,743,124	59,848,340	58,891,793	75,671,480	78,150,386		2,044,831	2,389,377	3,128,627	3,808,418
Feb	57,609,194	53,604,829	55,734,297	69,622,559	72,856,962		2,242,504	2,255,682	3,345,860	2,830,258
Mar	63,598,491	55,161,184	61,059,007	77,206,437	80,615,960		2,282,507	2,307,582	3,251,024	4,394,996
Apr	62,035,905	54,956,085	63,829,008	74,941,169	77,272,304		2,557,263	2,891,151	2,964,404	4,197,523
May	62,048,195	57,601,860	67,335,329	74,139,223	81,377,256		2,669,372	2,256,059	3,440,189	3,253,517
Jun	55,698,229	55,606,235	67,869,544	70,508,653	81,657,451		1,865,729	2,248,490	3,023,537	3,878,051
Jul	62,695,476	58,269,158	69,751,638	69,669,967	78,451,632		2,008,928	2,856,881	3,745,321	4,544,945
Aug	60,913,765	61,285,978	71,753,795	69,572,542	79,776,228		2,616,567	3,050,819	3,749,264	4,849,157
Sep	56,836,778	59,209,520	67,117,700	70,818,589	79,801,245		2,192,338	3,030,109	3,320,029	5,499,892
Oct	57,306,010	60,384,803	68,837,243	73,900,938	81,932,711		2,266,272	3,021,170	3,207,249	4,380,929
Nov	60,216,843	61,962,365	67,502,922	80,233,782	85,434,436		2,458,007	2,399,143	4,017,121	4,084,652
Dec	63,086,363	59,860,658	72,298,113	81,487,618	89,567,958		2,455,335	2,723,768	3,659,710	3,362,571
Total	726,788,373	697,751,015	791,980,389	887,772,957	966,894,529	0	27,659,653	31,430,231	40,852,335	49,084,909
Hispanic Cheese					Other Cheese ^{1/}					
	<i>Pounds</i>					<i>Pounds</i>				
Jan	5,673,376	6,880,962	6,204,845	6,605,563	7,294,458	7,777,997	5,756,716	6,256,861	5,616,841	11,419,371
Feb	5,337,832	6,047,172	5,953,047	7,427,612	7,599,143	7,674,454	6,460,304	5,585,948	6,486,085	7,554,066
Mar	5,986,459	6,302,742	6,940,761	7,827,739	8,533,100	9,279,072	7,219,126	5,928,362	8,458,422	7,727,624
Apr	5,688,053	6,901,859	7,159,100	7,592,470	8,159,988	10,356,551	7,782,800	5,801,644	6,496,983	12,712,512
May	5,844,176	6,723,962	7,093,065	6,674,170	8,181,357	8,337,520	6,981,611	6,027,555	6,155,512	12,119,340
Jun	5,729,566	6,028,650	6,504,447	7,545,345	8,092,426	8,500,903	6,115,960	7,698,549	7,231,939	11,088,830
Jul	6,151,207	6,656,387	7,383,293	7,559,174	7,811,211	9,383,625	6,858,697	7,666,639	6,684,389	9,289,618
Aug	6,483,978	6,784,594	6,875,512	7,488,268	8,432,484	10,574,306	6,771,151	6,106,607	6,047,900	7,522,519
Sep	5,853,309	6,644,162	7,285,681	7,646,121	8,392,191	10,950,986	5,115,141	6,207,452	6,385,665	6,167,666
Oct	6,435,499	7,050,888	7,150,377	7,613,686	8,087,630	11,217,367	5,414,238	5,669,571	5,689,725	6,951,448
Nov	5,963,576	6,253,106	6,485,912	7,455,611	7,881,606	10,935,960	4,990,233	7,853,539	10,316,473	6,912,732
Dec	5,485,929	6,394,936	7,269,658	7,640,484	7,883,410	7,369,972	5,584,816	6,712,973	14,080,774	6,983,118
Total	70,632,960	78,669,420	82,305,698	89,076,243	96,349,004	112,358,713	75,050,793	77,515,700	89,650,708	106,448,844
Parmesan					Total Cheese					
	<i>Pounds</i>					<i>Pounds</i>				
Jan		5,826,798	5,482,365	5,779,664	6,025,440	136,092,571	144,682,690	146,735,911	167,596,547	179,666,895
Feb		4,975,457	5,361,852	5,008,808	5,489,035	124,050,566	131,696,345	135,247,290	156,093,586	162,022,614
Mar		6,335,879	5,337,234	4,320,265	6,216,775	137,142,335	144,069,855	149,867,977	170,781,719	181,396,065
Apr		5,728,291	5,220,315	5,028,059	6,088,742	137,837,694	142,271,469	150,219,708	168,861,725	182,284,115
May		5,501,621	4,805,708	3,991,843	5,838,020	138,617,862	147,652,033	156,168,120	165,085,816	187,426,876
Jun		5,883,261	5,306,563	5,459,827	3,232,560	136,344,694	141,092,882	155,488,827	160,336,023	181,252,102
Jul		4,235,437	5,119,155	6,065,934	5,493,881	138,541,396	143,011,951	158,472,231	161,359,746	174,698,449
Aug		4,315,545	3,281,083	4,709,247	5,956,001	137,968,014	146,845,823	157,506,361	157,191,298	176,751,614
Sep		180,056	4,990,304	5,972,468	6,254,355	134,894,749	142,790,769	151,860,029	160,305,013	174,149,627
Oct		4,234,777	5,314,819	6,359,724	4,414,268	140,064,013	144,735,950	155,187,734	166,942,907	176,104,012
Nov		5,497,210	2,886,878	2,774,083	3,565,127	138,846,861	145,823,503	151,174,559	173,951,216	178,219,888
Dec		5,872,665	5,710,980	3,506,219	4,644,533	142,816,151	148,589,002	163,750,697	184,312,745	182,807,024
Total	0	58,586,997	58,817,256	58,976,141	63,218,737	1,643,216,906	1,723,262,272	1,831,679,444	1,992,818,341	2,136,779,281

^{1/} Other cheese includes all cheeses not included in the cheese categories listed above.

Pricing / Costs

California saw increases in both total milk production and commercial milk production in 2005. The record high prices experienced in May and June of 2004 were not repeated in 2005, however, Class 1 prices remained steady in the \$14-16 range, well above the lower 2002 levels. Milk production in California and across most of the U.S. continued to grow at a steady rate, compared to previous years. The twelve-month average price paid to producers for 2005 was \$13.93 per hundredweight, a 5 percent drop from 2004, but a 22 percent and 27 percent increase compared to 2003 and 2002, respectively.

Wholesale prices for butter, nonfat dry milk (NFDM), whey powder, and Cheddar cheese form the basis for California's regulated milk prices. The overall average per pound commodity prices when compared to 2004: butter averaged 26¢ lower; cheese averaged 15¢ lower; nonfat dry milk averaged 9.5¢ higher; and Western dry whey averaged 7.7¢ higher.

Traditionally, milk prices follow seasonal patterns. Prices are usually highest in the Fall, peaking with the holiday use of butter. Cheese sales typically remain strong through Super Bowl Sunday in late January. Milk prices normally decline as demand tapers off in mid-winter and the seasonal milk production flush occurs in the Spring.



The year 2005 followed the typical year-long patterns, with fluctuating commodity prices.

Selected Monthly Commodity Prices Used in the Calculation of California Class 4a & 4b Prices, 2005

Month	Chicago Mercantile Exchange		Dairy Market News	California Manufacturing Plants
	Grade AA Butter	Block Cheddar Cheese	Western Dry Whey	Nonfat Dry Milk
<i>Dollars Per Pound</i>				
January	1.5725	1.5766	0.2584	0.8801
February	1.6071	1.5299	0.2625	0.8865
March	1.5543	1.5204	0.2700	0.8946
April	1.5179	1.5733	0.2769	0.9007
May	1.4025	1.4745	0.2859	0.9109
June	1.4923	1.4921	0.2945	0.9048
July	1.6402	1.5239	0.3054	0.9201
August	1.6665	1.4195	0.3100	0.9374
September	1.7098	1.5384	0.3173	0.9500
October	1.6427	1.4849	0.3219	0.9682
November	1.4627	1.3808	0.3280	0.9724
December	1.3648	1.4304	0.3384	0.9743





Minimum Class 1 Prices

Minimum Prices in California for Market Milk Used to Produce Class 1 Products, by Marketing Area, 2001-2005

Year & Month	Northern California				Southern California				Wtd. Avg. Basis ^{2/}
	Fat	SNF	Fluid	Equivalent	Fat	SNF	Fluid	Equivalent	
	<i>Dollars Per Pound</i>		<i>Per Cwt. ^{1/}</i>		<i>Dollars Per Pound</i>		<i>Per Cwt. ^{1/}</i>		<i>Per Cwt. ^{1/}</i>
2001									
Jan	2.0100	0.8375	0.0231	16.35	2.0100	0.8375	0.0262	16.62	16.48
Feb	1.2800	0.8380	0.0231	13.80	1.2800	0.8380	0.0262	14.07	13.93
Mar	1.4610	0.8374	0.0231	14.43	1.4610	0.8374	0.0262	14.70	14.56
Apr	1.6835	0.8344	0.0230	15.17	1.6835	0.8344	0.0261	15.44	15.30
May	1.8960	0.8350	0.0230	15.92	1.8960	0.8350	0.0261	16.19	16.05
Jun	2.1050	0.8359	0.0231	16.66	2.1050	0.8359	0.0262	16.94	16.80
Jul	2.2002	0.8373	0.0231	17.01	2.2002	0.8373	0.0262	17.29	17.15
Aug	2.2416	0.8279	0.0228	17.05	2.2416	0.8279	0.0259	17.32	17.18
Sep	2.2680	0.8249	0.0227	17.11	2.2680	0.8249	0.0258	17.38	17.24
Oct	2.5285	0.7999	0.0219	17.73	2.5285	0.7999	0.0250	18.01	17.87
Nov	1.8415	0.8710	0.0242	16.14	1.8415	0.8710	0.0273	16.42	16.28
Dec	1.4310	0.7748	0.0211	13.61	1.4310	0.7748	0.0242	13.88	13.74
2002									
Jan	1.4250	0.7693	0.0209	13.51	1.4250	0.7683	0.0209	13.78	13.64
Feb	1.4980	0.7615	0.0207	13.69	1.4980	0.7615	0.0238	13.96	13.82
Mar	1.3950	0.7566	0.0206	13.27	1.3950	0.7566	0.0237	13.54	13.40
Apr	1.3920	0.7568	0.0206	13.26	1.3920	0.7568	0.0237	13.54	13.39
May	1.3290	0.7552	0.0205	13.02	1.3290	0.7552	0.0236	13.30	13.16
Jun	1.1654	0.7581	0.0206	12.49	1.1654	0.7581	0.0237	12.76	12.62
Jul	1.1792	0.7562	0.0206	12.51	1.1792	0.7562	0.0237	12.79	12.65
Aug	1.1237	0.7565	0.0206	12.32	1.1237	0.7565	0.0237	12.60	12.46
Sep	1.1234	0.7568	0.0206	12.33	1.1234	0.7568	0.0237	12.60	12.46
Oct	1.0202	0.7575	0.0206	11.97	1.0202	0.7575	0.0237	12.24	12.10
Nov	1.0772	0.8472	0.0234	13.20	1.0772	0.8472	0.0265	13.47	13.33
Dec	1.1072	0.7622	0.0208	12.33	1.1072	0.7622	0.0239	12.60	12.46
2003									
Jan	1.2165	0.7570	0.0206	12.65	1.2165	0.7570	0.0237	12.93	12.79
Feb	1.2292	0.6962	0.0187	12.00	1.2292	0.6962	0.0218	12.27	12.13
Mar	1.1525	0.7101	0.0191	11.89	1.1525	0.7101	0.0222	12.17	12.02
Apr	1.1692	0.6823	0.0183	11.63	1.1692	0.6823	0.0214	11.91	11.77
May	1.1929	0.6829	0.0183	11.72	1.1929	0.6829	0.0214	12.00	11.85
Jun	1.1897	0.6895	0.0185	11.79	1.1897	0.6895	0.0216	12.06	11.92
Jul	1.2052	0.6821	0.0183	11.76	1.2052	0.6821	0.0214	12.03	11.89
Aug	1.2531	0.9036	0.0252	14.46	1.2531	0.9036	0.0283	14.73	14.59
Sep	1.3447	1.0221	0.0289	16.14	1.3447	1.0221	0.0320	16.41	16.27
Oct	1.2577	1.0544	0.0299	16.20	1.2577	1.0544	0.0330	16.47	16.33
Nov	1.3034	1.0413	0.0295	16.21	1.3034	1.0413	0.0326	16.48	16.34
Dec	1.3167	0.9412	0.0264	15.11	1.3167	0.9412	0.0295	15.39	15.25
2004									
Jan	1.3887	0.8115	0.0223	13.88	1.3887	0.8115	0.0254	14.15	14.01
Feb	1.5003	0.7303	0.0198	13.34	1.5003	0.7303	0.0229	13.62	13.47
Mar	1.7705	0.6826	0.0183	13.74	1.7705	0.6826	0.0214	14.01	13.87
Apr	2.3132	0.6945	0.0187	15.78	2.3132	0.6945	0.0218	16.05	15.91
May	2.3887	1.1510	0.0329	21.26	2.3887	1.1510	0.0360	21.53	21.39
Jun	2.4605	1.1963	0.0344	22.04	2.4605	1.1963	0.0375	22.31	22.17
Jul	2.1167	0.9799	0.0276	18.36	2.1167	0.9799	0.0307	18.63	18.49
Aug	2.1345	0.7091	0.0191	15.32	2.1345	0.7091	0.0222	15.59	15.45
Sep	1.7929	0.8417	0.0233	15.64	1.7929	0.8417	0.0264	15.92	15.78
Oct	1.9187	0.8349	0.0231	16.01	1.9187	0.8349	0.0262	16.28	16.14
Nov	1.9717	0.7889	0.0216	15.66	1.9717	0.7889	0.0247	15.93	15.79
Dec	1.9099	0.8464	0.0234	16.10	1.9099	0.8464	0.0265	16.38	16.23
2005									
Jan	2.2367	0.9488	0.0266	18.42	2.2367	0.9488	0.0297	18.69	18.55
Feb	1.7667	0.8129	0.0224	15.22	1.7667	0.8129	0.0255	15.49	15.35
Mar	1.8070	0.8760	0.0243	16.08	1.8070	0.8760	0.0274	16.35	16.21
Apr	1.7313	0.8699	0.0241	15.74	1.7313	0.8699	0.0272	16.02	15.88
May	1.7527	0.9182	0.0257	16.38	1.7527	0.9182	0.0288	16.65	16.51
Jun	1.5437	0.8408	0.0232	14.75	1.5437	0.8408	0.0263	15.03	14.89
Jul	1.6052	0.8596	0.0238	15.19	1.6052	0.8596	0.0269	15.46	15.32
Aug	1.9011	0.8256	0.0228	15.84	1.9011	0.8256	0.0259	16.11	15.97
Sep	1.8605	0.7839	0.0215	15.22	1.8605	0.7839	0.0246	15.49	15.35
Oct	1.9247	0.7938	0.0218	15.56	1.9247	0.7938	0.0249	15.83	15.69
Nov	1.8649	0.8091	0.0222	15.52	1.8649	0.8091	0.0253	15.79	15.65
Dec	1.6802	0.8189	0.0226	14.99	1.6802	0.8189	0.0257	15.26	15.12

^{1/} Calculated based on 3.5 percent fat, 8.7 percent solids-not-fat, and 87.8 percent fluid carrier.

^{2/} Calculated for the State as a whole using market milk production in each marketing area for weighting.





Average Retail Prices

U.S. Retail Price Averages for Whole, Reduced Fat, Lowfat, and Skim Milk December 2003, 2004, 2005 Comparison

City	December 2003				December 2004				December 2005			
	Whole	Reduced Fat	Lowfat	Skim	Whole	Reduced Fat	Lowfat	Skim	Whole	Reduced Fat	Lowfat	Skim
<i>Weighted Average Prices in Dollars Per Gallon</i>												
Albany	2.96	2.95	2.95	2.94	3.04	2.97	2.99	2.91	2.92	2.79	2.80	2.68
Atlanta	3.15	3.26	3.21	3.28	3.12	2.98	2.85	2.96	3.36	3.28	3.19	3.25
Baltimore	3.07	3.02	2.89	2.88	3.22	3.19	3.06	2.99	3.27	3.19	3.08	3.00
Birmingham	3.06	2.98	2.99	3.00	3.34	3.24	3.25	3.24	3.44	3.34	3.30	3.30
Boston	2.93	2.91	2.91	2.88	3.04	3.01	3.06	3.08	3.05	3.00	3.02	3.03
Buffalo/Rochester	2.84	2.78	2.83	2.86	2.90	2.40	2.27	2.20	2.36	2.17	1.98	1.87
Charlotte	3.16	3.18	3.25	3.22	3.58	3.60	3.71	3.67	3.60	3.63	3.72	3.70
Chicago	2.59	2.54	2.42	2.58	2.70	2.55	2.56	2.66	2.93	2.78	2.79	2.82
Cincinnati	2.31	2.22	2.21	2.19	2.48	2.33	2.25	2.23	2.49	2.40	2.42	2.39
Cleveland	2.70	2.56	2.55	2.56	2.76	2.59	2.58	2.55	2.80	2.70	2.72	2.69
Columbus	2.54	2.48	2.44	2.44	2.49	2.47	2.49	2.51	2.70	2.67	2.68	2.69
Dallas	2.45	2.45	2.46	2.45	2.99	2.98	2.97	2.94	3.24	3.22	3.21	3.11
Denver	3.31	3.17	3.11	2.99	3.35	3.21	3.01	2.92	3.51	3.41	3.24	3.03
Des Moines	2.82	2.67	2.53	2.43	3.01	2.75	2.55	2.36	3.04	2.80	2.60	2.47
Detroit	2.45	2.38	2.33	2.39	2.75	2.66	2.66	2.70	2.85	2.77	2.81	2.80
Grand Rapids	2.35	2.29	2.06	2.22	2.52	2.43	2.44	2.44	2.67	2.51	2.72	2.58
Hartford-New Haven	3.26	3.35	3.30	3.34	3.72	3.69	3.72	3.73	3.61	3.65	3.63	3.67
Houston	2.99	2.96	2.86	2.87	3.34	3.20	2.97	2.84	3.35	3.20	3.05	2.85
Indianapolis	2.36	2.31	2.28	2.29	2.55	2.43	2.37	2.38	2.72	2.63	2.59	2.61
Jacksonville	3.19	3.19	3.19	3.17	3.37	3.36	3.34	3.34	3.46	3.47	3.47	3.49
Kansas City	2.99	2.81	2.76	2.60	3.22	2.98	2.88	2.67	3.29	3.08	2.97	2.79
Las Vegas	2.93	2.77	2.66	2.60	2.68	2.44	2.32	2.25	2.92	2.53	2.50	2.48
Little Rock	2.98	2.98	2.91	2.93	3.10	3.01	2.95	2.91	3.13	3.01	2.92	2.89
Los Angeles	3.08	2.99	3.11	2.86	2.83	2.60	2.68	2.27	2.83	2.62	2.74	2.29
Louisville	2.54	2.49	2.37	2.36	2.80	2.67	2.45	2.47	2.89	2.75	2.68	2.65
Memphis	3.02	2.88	2.74	2.78	3.10	2.85	2.57	2.62	3.19	3.04	2.71	2.77
Miami	3.21	3.28	3.18	3.18	3.40	3.42	3.31	3.35	3.58	3.59	3.46	3.54
Milwaukee	2.86	2.69	2.63	2.66	3.27	2.97	2.85	2.75	3.36	3.07	2.97	2.81
Minneapolis	3.53	3.53	3.55	3.52	3.46	3.54	3.49	3.48	3.51	3.46	3.46	3.42
Nashville	3.02	2.90	2.86	2.95	3.26	3.02	2.85	2.91	3.25	3.14	3.04	3.04
New Orleans-Mobile	3.23	3.20	3.20	3.19	3.55	3.51	3.54	3.46	3.62	3.55	3.50	3.58
New York	3.16	3.05	3.11	3.06	3.43	3.23	3.36	3.32	3.42	3.35	3.29	3.27
Oklahoma City-Tulsa	2.96	2.91	2.84	2.87	3.05	2.95	2.83	2.78	3.16	3.03	2.94	2.92
Omaha	2.64	2.57	2.44	2.35	3.04	2.76	2.58	2.39	3.07	2.72	2.57	2.47
Orlando	3.22	3.22	3.22	3.21	3.32	3.32	3.32	3.32	3.51	3.51	3.50	3.50
Philadelphia	3.19	3.10	3.03	2.96	3.28	3.08	2.95	2.84	3.36	3.22	3.10	3.01
Phoenix	2.40	2.40	2.38	2.39	2.30	2.12	2.12	2.08	2.36	2.36	2.35	2.28
Pittsburgh	2.92	2.57	2.78	2.76	3.07	2.89	2.81	2.73	3.09	2.91	2.83	2.83
Portland	2.67	2.42	2.40	2.39	2.78	2.43	2.44	2.38	3.06	2.58	2.56	2.55
Raleigh-Durham	3.03	3.02	3.06	3.07	3.61	3.61	3.66	3.65	3.84	3.82	3.86	3.85
Richmond- Norfolk	3.25	3.25	3.17	3.09	3.53	3.49	3.35	3.27	3.51	3.52	3.41	3.36
Sacramento	3.24	3.06	3.28	2.62	3.00	2.88	3.06	2.31	3.03	2.95	3.03	2.42
Salt Lake City-Boise	2.46	2.37	2.26	2.54	2.34	2.27	2.07	2.13	2.54	2.43	2.31	2.41
San Antonio	3.05	3.05	2.99	3.00	3.38	3.25	2.98	2.87	3.47	3.33	3.19	3.00
San Diego	3.15	3.08	3.31	3.07	2.77	2.53	2.67	2.32	2.85	2.58	2.72	2.24
San Francisco	3.25	3.05	3.72	2.72	3.00	2.78	3.36	2.34	3.11	2.95	3.43	2.48
Seattle	3.44	2.91	2.99	3.00	3.11	2.77	2.74	2.71	3.27	2.88	2.92	2.90
St Louis	3.04	2.90	3.05	2.94	3.00	2.81	2.65	2.59	3.02	2.78	2.62	2.52
Syracuse	2.77	2.68	2.71	2.70	2.88	2.53	2.52	2.51	2.72	2.45	2.39	2.32
Tampa	3.20	3.20	3.20	3.20	3.31	3.31	3.31	3.31	3.52	3.50	3.50	3.52
Washington DC	3.09	3.00	2.91	2.90	3.27	3.13	3.04	2.99	3.30	3.22	3.12	3.06
West Texas	2.66	2.64	2.52	2.56	3.03	2.95	2.83	2.81	3.03	2.98	2.93	2.81
Total US	2.94	2.86	2.85	2.81	3.07	2.93	2.88	2.80	3.14	3.01	2.97	2.88

Source: AC Nielsen Scantrack Reports on Refrigerated Milk. The average price per gallon represents the weighted averages for specific brands of milk within the specified market. Data includes organic milk. Data subject to revision.





Average Retail Prices

Class 1 "Farm" and "Average Retail" Prices for Selected Markets, 2004-2005

Month	Year	Class 1 Farm Price 1/				Average Whole Milk Retail Price Collected by AC Nielsen 2/				
		Southern California	Phoenix	Las Vegas	Denver	Los Angeles	San Diego	Las Vegas	Phoenix	Denver
		Dollars Per Gallon								
January	2004	1.22	1.22	1.19	1.24	3.05	3.07	2.75	2.29	3.25
February		1.17	1.20	1.17	1.22	2.95	2.95	2.56	2.33	3.14
March		1.20	1.23	1.20	1.25	3.02	3.06	2.52	2.28	2.96
April		1.38	1.38	1.35	1.39	3.07	3.09	2.70	2.32	3.06
May		1.85	1.89	1.86	1.91	3.38	3.40	3.06	2.86	3.58
June		1.92	2.02	1.99	2.04	3.53	3.51	3.16	3.12	3.59
July		1.60	1.75	1.72	1.76	3.31	3.26	3.05	3.09	3.80
August		1.34	1.46	1.43	1.48	3.05	2.99	2.85	2.61	3.37
September		1.37	1.40	1.37	1.42	2.91	2.76	2.73	2.49	3.42
October		1.40	1.47	1.44	1.49	2.84	2.77	2.68	2.42	3.29
November		1.37	1.43	1.40	1.45	2.81	2.76	2.66	2.41	3.38
December		1.41	1.44	1.41	1.46	2.83	2.77	2.68	2.30	3.35
January	2005	1.61	1.63	1.60	1.65	3.01	2.94	2.85	2.52	3.42
February		1.33	1.39	1.36	1.41	2.87	2.82	2.81	2.52	3.16
March		1.41	1.53	1.50	1.55	2.87	2.79	2.89	2.40	3.30
April		1.38	1.42	1.39	1.43	2.86	2.78	2.90	2.44	3.27
May		1.43	1.47	1.44	1.49	2.89	2.81	2.88	2.52	3.36
June		1.29	1.37	1.34	1.39	2.83	2.76	2.89	2.46	3.24
July		1.33	1.40	1.37	1.41	2.76	2.75	2.85	2.45	3.29
August		1.39	1.44	1.41	1.46	2.80	2.79	2.86	2.44	3.30
September		1.33	1.38	1.35	1.40	2.79	2.78	2.88	2.47	3.35
October		1.36	1.43	1.40	1.45	2.80	2.79	2.88	2.48	3.38
November		1.36	1.45	1.42	1.47	2.82	2.84	2.91	2.51	3.34
December		1.31	1.37	1.34	1.39	2.83	2.84	2.95	2.29	3.24

Month	Year	Class 1 Farm Price 1/				Average Whole Milk Retail Price Collected by AC Nielsen 2				
		Northern California	Salt Lake City 3/	Boise 3/	Pacific Northwest	Sacramento	San Francisco	Salt Lake City/Boise	Portland	Seattle
		Dollars Per Gallon								
January	2004	1.19	1.18	1.16	1.18	3.18	3.17	2.39	2.91	3.28
February		1.15	1.16	1.13	1.16	3.13	3.16	2.31	3.01	3.46
March		1.18	1.19	1.16	1.19	3.09	3.15	2.31	2.86	3.24
April		1.36			1.34	3.25	3.33	2.49	2.72	3.21
May		1.83			1.85	3.67	3.76	2.94	3.11	3.68
June		1.90			1.98	3.86	3.90	3.12	3.37	3.83
July		1.58			1.71	3.60	3.59	3.02	3.33	3.89
August		1.32			1.42	3.19	3.10	2.76	3.14	3.94
September		1.35			1.36	3.11	2.99	2.52	3.16	3.60
October		1.38			1.43	3.13	3.00	2.62	3.13	3.54
November		1.35			1.39	2.99	2.97	2.53	2.96	3.27
December		1.38			1.40	3.00	3.00	2.34	2.78	3.11
January	2005	1.58			1.60	3.23	3.26	2.58	2.70	3.33
February		1.31			1.35	3.02	3.05	2.78	2.81	2.99
March		1.38			1.49	3.05	3.10	2.59	2.82	3.15
April		1.35			1.38	3.05	3.06	2.63	2.97	3.14
May		1.41			1.44	3.08	3.16	2.70	3.04	3.16
June		1.27			1.33	2.98	3.05	2.55	3.04	3.17
July		1.31			1.36	2.94	3.03	2.54	3.01	3.12
August		1.36			1.41	2.99	3.11	2.51	3.04	3.23
September		1.31			1.34	2.97	3.11	2.54	3.09	3.25
October		1.34			1.39	2.99	3.13	2.59	3.05	3.14
November		1.33			1.42	3.01	3.14	2.57	3.11	3.28
December		1.29			1.33	3.04	3.10	2.66	3.08	3.08

1/ Class 1 farm prices depicted are minimum producer f.o.b. plant prices. They do not include either haul, deductions, or any over-order charges such as quality bonuses, service charges, premiums, etc.

2/ The Department has contracted with AC Nielsen to provide the retail price survey data on a monthly basis. Data subject to revision.

3/ As of April 1, 2004, the Western Milk Marketing Order was terminated.

Source: Dairy Marketing Class 1 Price Letter – Selected Issues; AC Nielsen Scantrack Reports on Refrigerated Milk; Dairy Market News





Minimum Class 2 Prices

Minimum Prices in California for Market Milk Used to Produce Class 2 Products, by Marketing Area, 2001-2005

Year & Month	Northern California			Southern California		
	Fat	SNF	Equivalent	Fat	SNF	Equivalent
	Dollars Per Pound		Per Cwt. ^{1/}	Dollars Per Pound		Per Cwt. ^{1/}
2001						
Jan	1.4785	0.9263	13.23	1.4808	0.9521	13.47
Feb	1.4844	0.9261	13.25	1.4867	0.9519	13.48
Mar	1.4844	0.9261	13.25	1.4867	0.9519	13.48
Apr	1.5980	0.9229	13.62	1.6003	0.9487	13.85
May	1.5980	0.9229	13.62	1.6003	0.9487	13.85
Jun	2.0551	0.9240	15.23	2.0574	0.9498	15.46
Jul	2.0551	0.9240	15.23	2.0574	0.9498	15.46
Aug	2.1872	0.8957	15.45	2.1895	0.9215	15.68
Sep	2.1872	0.8957	15.45	2.1895	0.9215	15.68
Oct	2.3854	0.8531	15.77	2.3877	0.8789	16.00
Nov	2.3854	0.8531	15.77	2.3877	0.8789	16.00
Dec	1.5582	0.8460	12.81	1.5605	0.8718	13.05
2002						
Jan	1.5582	0.8460	12.81	1.5605	0.8718	13.05
Feb	1.4460	0.8143	12.14	1.4483	0.8401	12.38
Mar	1.4460	0.8143	12.14	1.4483	0.8401	12.38
Apr	1.3620	0.7983	11.71	1.3643	0.8241	11.94
May	1.3620	0.7983	11.71	1.3643	0.8241	11.94
Jun	1.2190	0.7993	11.22	1.2213	0.8251	11.45
Jul	1.2190	0.7993	11.22	1.2213	0.8251	11.45
Aug	1.1102	0.7983	10.83	1.1125	0.8241	11.06
Sep	1.1102	0.7983	10.83	1.1125	0.8241	11.06
Oct	1.0431	0.8001	10.61	1.0454	0.8259	10.84
Nov	1.0431	0.8001	10.61	1.0454	0.8259	10.84
Dec	1.1036	0.8068	10.88	1.1059	0.8326	11.11
2003						
Jan	1.1036	0.8068	10.88	1.1059	0.8326	11.11
Feb	1.1950	0.7353	10.58	1.1973	0.7611	10.81
Mar	1.1950	0.7353	10.58	1.1973	0.7611	10.81
Apr	1.1454	0.7031	10.13	1.1477	0.7289	10.36
May	1.1454	0.7031	10.13	1.1477	0.7289	10.36
Jun	1.1542	0.7187	10.29	1.1565	0.7445	10.52
Jul	1.1542	0.7187	10.29	1.1565	0.7445	10.52
Aug	1.2221	0.7199	10.54	1.2244	0.7457	10.77
Sep	1.2221	0.7199	10.54	1.2244	0.7457	10.77
Oct	1.2551	0.7197	10.65	1.2574	0.7455	10.89
Nov	1.2551	0.7197	10.65	1.2574	0.7455	10.89
Dec	1.2755	0.7245	10.77	1.2778	0.7503	11.00
2004						
Jan	1.2755	0.7245	10.77	1.2778	0.7503	11.00
Feb	1.4478	0.7211	11.34	1.4501	0.7469	11.57
Mar	1.4478	0.7211	11.34	1.4501	0.7469	11.57
Apr	2.1171	0.7199	13.67	2.1194	0.7457	13.91
May	2.1171	0.7199	13.67	2.1194	0.7457	13.91
Jun	2.4265	0.7339	14.88	2.4288	0.7597	15.11
Jul	2.4265	0.7339	14.88	2.4288	0.7597	15.11
Aug	2.0646	0.7517	13.77	2.0669	0.7775	14.00
Sep	2.0646	0.7517	13.77	2.0669	0.7775	14.00
Oct	1.8258	0.7619	13.02	1.8281	0.7877	13.25
Nov	1.8258	0.7619	13.02	1.8281	0.7877	13.25
Dec	1.9711	0.7649	13.55	1.9734	0.7907	13.79
2005						
Jan	1.9711	0.7649	13.55	1.9734	0.7907	13.79
Feb	1.8517	0.7904	13.36	1.8540	0.8162	13.59
Mar	1.8517	0.7904	13.36	1.8540	0.8162	13.59
Apr	1.7427	0.8078	13.13	1.7450	0.8336	13.36
May	1.7427	0.8078	13.13	1.7450	0.8336	13.36
Jun	1.5750	0.8210	12.66	1.5773	0.8468	12.89
Jul	1.5750	0.8210	12.66	1.5773	0.8468	12.89
Aug	1.7022	0.8277	13.16	1.7045	0.8535	13.39
Sep	1.7022	0.8277	13.16	1.7045	0.8535	13.39
Oct	1.8485	0.8589	13.94	1.8508	0.8847	14.17
Nov	1.8485	0.8589	13.94	1.8508	0.8847	14.17
Dec	1.6859	0.8855	13.60	1.6882	0.9113	13.84

^{1/} Calculated on 3.5 percent fat and 8.7 percent solids-not-fat.





Minimum Class 3 Prices

Minimum Prices in California for Market Milk Used to Produce Class 3 Products, by Marketing Area, 2001-2005

Year & Month	Northern California			Southern California		
	Fat	SNF	Equivalent	Fat	SNF	Equivalent
	Dollars Per Pound		Per Cwt. ^{1/}	Dollars Per Pound		Per Cwt. ^{1/}
2001						
Jan	1.4785	0.9206	13.18	1.4808	0.9206	13.19
Feb	1.4844	0.9204	13.20	1.4867	0.9204	13.21
Mar	1.4844	0.9204	13.20	1.4867	0.9204	13.21
Apr	1.5980	0.9172	13.57	1.6003	0.9172	13.58
May	1.5980	0.9172	13.57	1.6003	0.9172	13.58
Jun	2.0551	0.9183	15.18	2.0574	0.9183	15.19
Jul	2.0551	0.9183	15.18	2.0574	0.9183	15.19
Aug	2.1872	0.8900	15.40	2.1895	0.8900	15.41
Sep	2.1872	0.8900	15.40	2.1895	0.8900	15.41
Oct	2.3854	0.8474	15.72	2.3877	0.8474	15.73
Nov	2.3854	0.8474	15.72	2.3877	0.8474	15.73
Dec	1.5582	0.8403	12.76	1.5605	0.8403	12.77
2002						
Jan	1.5582	0.8403	12.76	1.5605	0.8403	12.77
Feb	1.4460	0.8086	12.10	1.4483	0.8086	12.10
Mar	1.4460	0.8086	12.10	1.4483	0.8086	12.10
Apr	1.3620	0.7926	11.66	1.3643	0.7926	11.67
May	1.3620	0.7926	11.66	1.3643	0.7926	11.67
Jun	1.2190	0.7936	11.17	1.2213	0.7936	11.18
Jul	1.2190	0.7936	11.17	1.2213	0.7936	11.18
Aug	1.1102	0.7926	10.78	1.1125	0.7926	10.79
Sep	1.1102	0.7926	10.78	1.1125	0.7926	10.79
Oct	1.0431	0.7944	10.56	1.0454	0.7944	10.57
Nov	1.0431	0.7944	10.56	1.0454	0.7944	10.57
Dec	1.1036	0.8011	10.83	1.1059	0.8011	10.84
2003						
Jan	1.1036	0.8011	10.83	1.1059	0.8011	10.84
Feb	1.1950	0.7296	10.53	1.1973	0.7296	10.54
Mar	1.1950	0.7296	10.53	1.1973	0.7296	10.54
Apr	1.1454	0.6974	10.08	1.1477	0.6974	10.08
May	1.1454	0.6974	10.08	1.1477	0.6974	10.08
Jun	1.1542	0.7130	10.24	1.1565	0.7130	10.25
Jul	1.1542	0.7130	10.24	1.1565	0.7130	10.25
Aug	1.2221	0.7142	10.49	1.2244	0.7142	10.50
Sep	1.2221	0.7142	10.49	1.2244	0.7142	10.50
Oct	1.2551	0.7140	10.60	1.2574	0.7140	10.61
Nov	1.2551	0.7140	10.60	1.2574	0.7140	10.61
Dec	1.2755	0.7188	10.72	1.2778	0.7188	10.73
2004						
Jan	1.2755	0.7188	10.72	1.2778	0.7188	10.73
Feb	1.4478	0.7154	11.29	1.4501	0.7154	11.30
Mar	1.4478	0.7154	11.29	1.4501	0.7154	11.30
Apr	2.1171	0.7142	13.62	2.1194	0.7142	13.63
May	2.1171	0.7142	13.62	2.1194	0.7142	13.63
Jun	2.4265	0.7282	14.83	2.4288	0.7282	14.84
Jul	2.4265	0.7282	14.83	2.4288	0.7282	14.84
Aug	2.0646	0.7460	13.72	2.0669	0.7460	13.72
Sep	2.0646	0.7460	13.72	2.0669	0.7460	13.72
Oct	1.8258	0.7562	12.97	1.8281	0.7562	12.98
Nov	1.8258	0.7562	12.97	1.8281	0.7562	12.98
Dec	1.9711	0.7592	13.50	1.9734	0.7592	13.51
2005						
Jan	1.9711	0.7592	13.50	1.9734	0.7592	13.51
Feb	1.8517	0.7847	13.31	1.8540	0.7847	13.32
Mar	1.8517	0.7847	13.31	1.8540	0.7847	13.32
Apr	1.7427	0.8021	13.08	1.7450	0.8021	13.09
May	1.7427	0.8021	13.08	1.7450	0.8021	13.09
Jun	1.5750	0.8153	12.61	1.5773	0.8153	12.61
Jul	1.5750	0.8153	12.61	1.5773	0.8153	12.61
Aug	1.7022	0.8220	13.11	1.7045	0.8220	13.12
Sep	1.7022	0.8220	13.11	1.7045	0.8220	13.12
Oct	1.8485	0.8532	13.89	1.8508	0.8532	13.90
Nov	1.8485	0.8532	13.89	1.8508	0.8532	13.90
Dec	1.6859	0.8798	13.55	1.6882	0.8798	13.56

^{1/} Calculated on 3.5 percent fat and 8.7 percent solids-not-fat.





Minimum Class 4a/4b Prices

Minimum Prices in California for Market Milk Used to Produce Class 4a and 4b Products, by Marketing Area, 2001-2005

Month	Fat	SNF	Equivalent	Fat	SNF	Equivalent
	Class 4a			Class 4b		
	Dollars Per Pound		Per Cwt. ^{1/}	Dollars Per Pound		Per Cwt. ^{1/}
2001						
Jan	1.2827	0.8621	11.99	1.2827	0.5435	9.22
Feb	1.4512	0.8597	12.56	1.4512	0.5709	10.05
Mar	1.6709	0.8574	13.31	1.6709	0.6318	11.34
Apr	1.9566	0.8587	14.32	1.9566	0.6064	12.12
May	2.0796	0.8607	14.77	2.0796	0.7906	14.16
Jun	2.1908	0.8583	15.14	2.1908	0.8219	14.82
Jul	2.1096	0.8045	14.38	2.1096	0.8705	14.96
Aug	2.2834	0.7844	14.82	2.2834	0.8350	15.26
Sep	2.4134	0.7932	15.35	2.4134	0.8166	15.55
Oct	1.6199	0.7874	12.52	1.6199	0.7623	12.30
Nov	1.4224	0.7760	11.73	1.4224	0.6466	10.60
Dec	1.3744	0.7629	11.45	1.3744	0.7082	10.97
2002						
Jan	1.4436	0.7370	11.46	1.4436	0.7314	11.42
Feb	1.3289	0.7347	11.04	1.3289	0.6610	10.40
Mar	1.3211	0.7332	11.00	1.3211	0.6413	10.20
Apr	1.2446	0.7329	10.73	1.2446	0.7164	10.59
May	1.1051	0.7313	10.23	1.1051	0.7311	10.23
Jun	1.0774	0.7312	10.13	1.0774	0.6688	9.59
Jul	1.0548	0.7309	10.05	1.0548	0.5987	8.90
Aug	1.0238	0.7319	9.95	1.0238	0.7016	9.69
Sep	0.9742	0.7338	9.79	0.9742	0.7489	9.93
Oct	1.0508	0.7376	10.10	1.0508	0.7754	10.42
Nov	1.0681	0.7416	10.19	1.0681	0.6016	8.97
Dec	1.1603	0.6914	10.08	1.1603	0.6174	9.43
2003						
Jan	1.1414	0.6447	9.60	1.1414	0.6422	9.58
Feb	1.0801	0.6361	9.31	1.0801	0.6418	9.36
Mar	1.1224	0.6356	9.46	1.1224	0.5643	8.84
Apr	1.1118	0.6521	9.56	1.1118	0.6119	9.21
May	1.1083	0.6508	9.54	1.1083	0.6203	9.28
Jun	1.1342	0.6523	9.64	1.1342	0.6357	9.50
Jul	1.2217	0.6531	9.96	1.2217	0.9561	12.59
Aug	1.2220	0.6516	9.95	1.2220	1.1213	14.03
Sep	1.2000	0.6534	9.88	1.2000	1.1426	14.14
Oct	1.2212	0.6553	9.98	1.2212	1.1415	14.21
Nov	1.2415	0.6593	10.08	1.2415	0.9374	12.50
Dec	1.3565	0.6555	10.45	1.3565	0.7882	11.61
2004						
Jan	1.4509	0.6523	10.75	1.4509	0.6922	11.10
Feb	1.7912	0.6515	11.94	1.7912	0.6285	11.74
Mar	2.3548	0.6538	13.93	2.3548	0.8418	15.57
Apr	2.4480	0.6616	14.32	2.4480	1.3001	19.88
May	2.3167	0.6718	13.95	2.3167	1.2908	19.34
Jun	2.1010	0.6833	13.30	2.1010	1.0338	16.35
Jul	1.9399	0.6856	12.75	1.9399	0.6858	12.76
Aug	1.6774	0.6937	11.91	1.6774	0.9358	14.01
Sep	1.8860	0.6957	12.65	1.8860	0.8543	14.03
Oct	1.8253	0.6976	12.46	1.8253	0.8291	13.60
Nov	2.0287	0.6978	13.17	2.0287	0.9246	15.14
Dec	1.9264	0.7163	12.97	1.9264	0.9479	14.99
2005						
Jan	1.6888	0.7301	12.26	1.6888	0.9729	14.38
Feb	1.7303	0.7365	12.46	1.7303	0.9050	13.93
Mar	1.6669	0.7446	12.31	1.6669	0.9241	13.87
Apr	1.6001	0.7487	12.11	1.6001	1.0048	14.34
May	1.4616	0.7589	11.72	1.4616	0.9512	13.39
Jun	1.5694	0.7528	12.04	1.5694	0.9344	13.62
Jul	1.7468	0.7681	12.80	1.7468	0.9080	14.01
Aug	1.7784	0.7854	13.06	1.7784	0.7775	12.99
Sep	1.8304	0.7980	13.35	1.8304	0.8995	14.23
Oct	1.7498	0.8162	13.23	1.7498	0.8725	13.72
Nov	1.5338	0.8204	12.51	1.5338	0.8417	12.69
Dec	1.4164	0.8223	12.11	1.4164	0.9526	13.25

^{1/} Calculated based on 3.5 percent fat and 8.7 percent solids-not-fat




Quota, Base, and Overbase Prices

Pool Prices for Quota, Base, and Overbase 2001-2005

Year & Month	Quota			Base and Overbase ^{1/}		
	Fat	SNF	Equivalent	Fat	SNF	Equivalent
	<i>Dollars Per Pound</i>		<i>Per Cwt. ^{2/}</i>	<i>Dollars Per Pound</i>		<i>Per Cwt. ^{2/}</i>
2001						
Jan	1.379	0.908	12.73	1.379	0.713	11.03
Feb	1.443	0.918	13.04	1.443	0.723	11.34
Mar	1.623	0.942	13.88	1.623	0.747	12.18
Apr	1.872	0.931	14.65	1.872	0.736	12.95
May	1.968	1.013	15.70	1.968	0.818	14.00
Jun	2.158	1.023	16.46	2.158	0.828	14.76
Jul	2.107	1.031	16.35	2.107	0.836	14.65
Aug	2.265	1.008	16.70	2.265	0.813	15.00
Sep	2.359	0.999	16.95	2.359	0.804	15.25
Oct	1.796	0.968	14.71	1.796	0.773	13.01
Nov	1.585	0.933	13.67	1.585	0.738	11.97
Dec	1.400	0.923	12.93	1.400	0.728	11.23
2002						
Jan	1.458	0.928	13.18	1.458	0.733	11.48
Feb	1.361	0.892	12.53	1.361	0.697	10.83
Mar	1.346	0.880	12.37	1.346	0.685	10.67
Apr	1.275	0.913	12.41	1.275	0.718	10.71
May	1.163	0.918	12.06	1.163	0.723	10.36
Jun	1.108	0.887	11.60	1.108	0.692	9.90
Jul	1.093	0.857	11.28	1.093	0.662	9.58
Aug	1.044	0.899	11.48	1.044	0.704	9.78
Sep	1.006	0.926	11.58	1.006	0.731	9.88
Oct	1.047	0.939	11.84	1.047	0.744	10.14
Nov	1.089	0.876	11.44	1.089	0.681	9.74
Dec	1.149	0.857	11.48	1.149	0.662	9.78
2003						
Jan	1.134	0.854	11.40	1.134	0.659	9.70
Feb	1.107	0.831	11.11	1.107	0.636	9.41
Mar	1.134	0.800	10.93	1.134	0.605	9.23
Apr	1.120	0.816	11.02	1.120	0.621	9.32
May	1.121	0.819	11.05	1.121	0.624	9.35
Jun	1.139	0.826	11.17	1.139	0.631	9.47
Jul	1.205	0.977	12.72	1.205	0.782	11.02
Aug	1.224	1.112	13.96	1.224	0.917	12.26
Sep	1.214	1.160	14.34	1.214	0.965	12.64
Oct	1.227	1.167	14.45	1.227	0.972	12.75
Nov	1.247	1.057	13.56	1.247	0.862	11.86
Dec	1.345	0.963	13.09	1.345	0.768	11.39
2004						
Jan	1.426	0.887	12.71	1.426	0.692	11.01
Feb	1.722	0.838	13.32	1.722	0.643	11.62
Mar	2.115	0.923	15.44	2.115	0.728	13.74
Apr	2.375	1.139	18.23	2.375	0.944	16.53
May	2.283	1.230	18.69	2.283	1.035	16.99
Jun	2.164	1.136	17.46	2.164	0.941	15.76
Jul	2.009	0.919	15.03	2.009	0.724	13.33
Aug	1.761	0.985	14.74	1.761	0.790	13.04
Sep	1.904	0.982	15.21	1.904	0.787	13.51
Oct	1.830	0.966	14.81	1.830	0.771	13.11
Nov	2.001	1.004	15.74	2.001	0.809	14.04
Dec	1.924	1.035	15.74	1.924	0.840	14.04
2005						
Jan	1.755	1.076	15.50	1.755	0.881	13.80
Feb	1.753	1.014	14.96	1.753	0.819	13.26
Mar	1.700	1.038	14.98	1.700	0.843	13.28
Apr	1.621	1.078	15.06	1.621	0.883	13.36
May	1.522	1.065	14.60	1.522	0.870	12.90
Jun	1.575	1.039	14.56	1.575	0.844	12.86
Jul	1.711	1.034	14.99	1.711	0.839	13.29
Aug	1.777	0.969	14.65	1.777	0.774	12.95
Sep	1.815	1.024	15.26	1.815	0.829	13.56
Oct	1.774	1.018	15.07	1.774	0.823	13.37
Nov	1.597	1.007	14.35	1.597	0.812	12.65
Dec	1.463	1.067	14.41	1.463	0.872	12.71

^{1/} Base and Overbase prices have been combined. They have been the same since January 1994.^{2/} Calculated based on 3.5 percent fat and 8.7 percent solids-not-fat.



Average Prices Paid to Producers

Average Prices Paid to Producers in California For All Bulk Milk (Grade A and Grade B), By Month, 2001-2005 ^{1/2/}

Year	January	February	March	April	May	June	July	August	September	October	November	December	Annual Average
<i>Dollars Per Hundredweight</i>													
2001	12.03	12.27	13.04	13.76	14.65	15.35	15.25	15.67	16.07	13.84	12.90	12.30	13.93
2002	12.52	11.73	11.47	11.38	10.98	10.42	10.07	10.34	10.48	10.86	10.53	10.61	10.95
2003	10.53	10.15	9.92	9.97	9.95	9.99	11.52	12.77	13.31	13.52	12.80	12.37	11.40
2004	11.94	12.55	14.63	17.29	17.63	16.26	13.85	13.64	14.27	14.01	15.18	15.17	14.70
2005	14.87	14.14	14.03	14.08	13.47	13.38	13.77	13.47	14.32	14.31	13.62	13.68	13.93

^{1/} Prices are F.O.B. plant, at actual test.

^{2/} Includes in-state pool shipments and California milk shipped into Federal Milk Marketing Orders. Excludes bonuses and premiums.

Average Prices Paid to Producers in California For Market Milk (Grade A), By Month, 2001-2005 ^{1/2/}

Year	January	February	March	April	May	June	July	August	September	October	November	December	Annual Average
<i>Dollars Per Hundredweight</i>													
2001	12.03	12.28	13.04	13.76	14.64	15.34	15.25	15.66	16.06	13.85	12.90	12.30	13.93
2002	12.52	11.73	11.47	11.38	10.97	10.43	10.07	10.34	10.48	10.85	10.53	10.60	10.95
2003	10.53	10.15	9.92	9.97	9.95	9.99	11.51	12.76	13.31	13.53	12.80	12.37	11.40
2004	11.94	12.55	14.61	17.26	17.62	16.26	13.86	13.64	14.27	14.00	15.16	15.16	14.69
2005	14.86	14.12	14.01	14.06	13.46	13.35	13.75	13.44	14.29	14.29	13.60	13.65	13.91

^{1/} Prices are F.O.B. plant, at actual test.

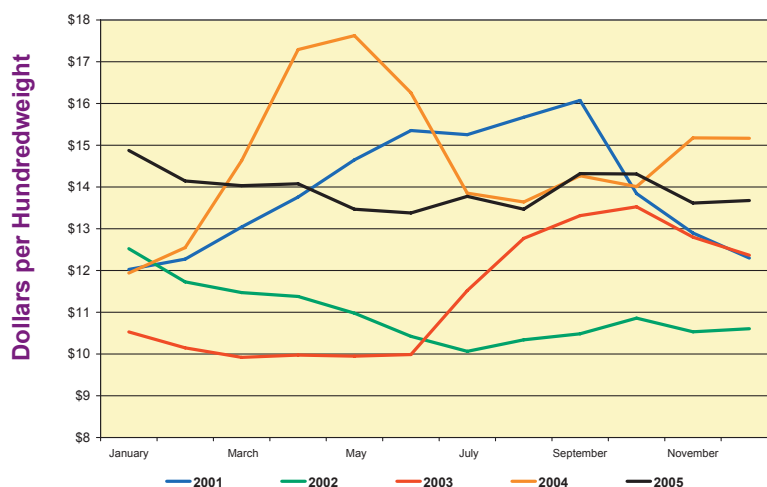
^{2/} Includes in-state pool shipments and California milk shipped into Federal Milk Marketing Orders. Excludes bonuses and premiums and exempt production.

Average Prices Paid to Producers in California For Manufacturing Milk (Grade B), By Month, 2001-2005 ^{1/2/}

Year	January	February	March	April	May	June	July	August	September	October	November	December	Annual Average
<i>Dollars Per Hundredweight</i>													
2001	11.23	11.42	13.12	13.67	15.31	15.93	15.87	16.51	17.08	13.23	12.26	12.55	14.01
2002	12.88	11.43	11.28	11.38	11.33	10.24	9.80	10.51	10.75	11.46	10.35	10.87	11.02
2003	10.89	10.47	9.80	10.23	10.37	10.29	12.93	13.65	13.95	13.34	12.42	12.18	11.71
2004	11.94	12.57	16.20	19.30	18.10	16.23	13.43	14.04	14.49	14.50	15.97	15.50	15.19
2005	15.52	14.95	14.64	14.94	13.98	14.47	14.67	14.39	15.51	15.25	14.48	14.89	14.81

^{1/} Prices are F.O.B. plant, at actual test.

Average Prices Paid to Producers, All Bulk Milk, 2001-2005



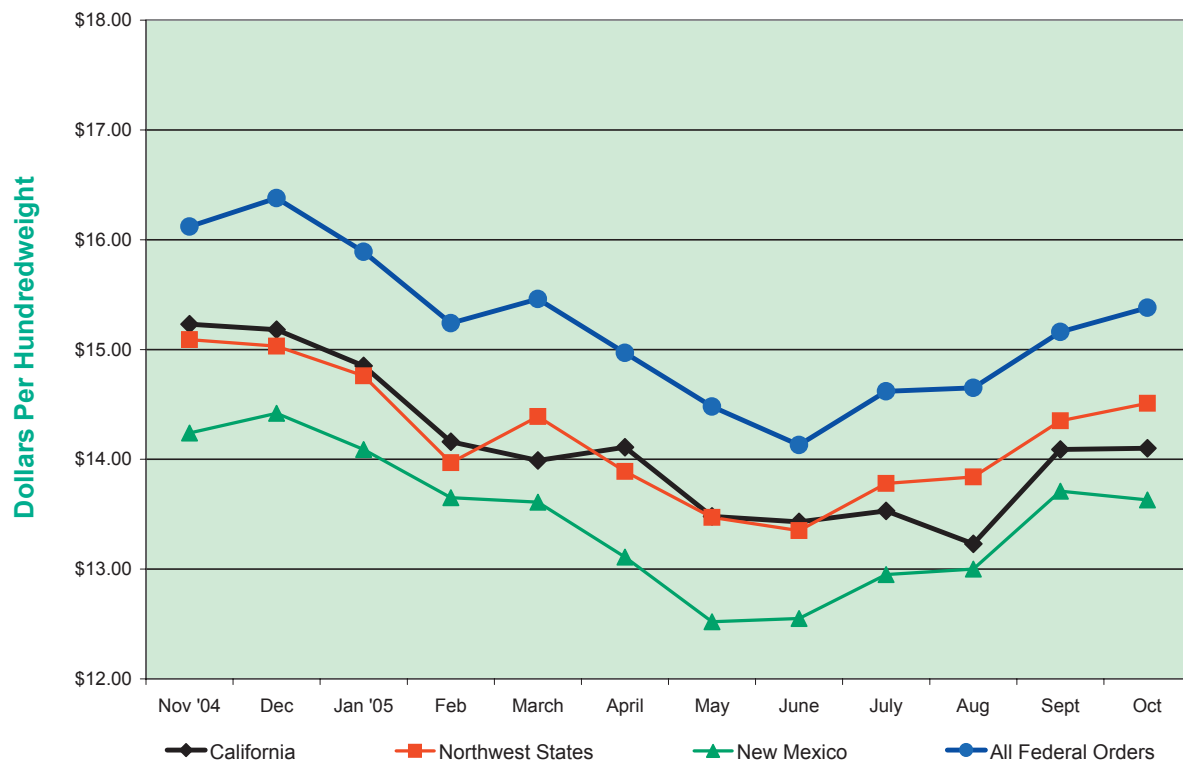


Mailbox Milk Prices

Mailbox Milk Prices for Selected Reported Areas in Federal Milk Orders and California, November 2004-October 2005

Reporting Areas	Nov '04	Dec	Jan '05	Feb	March	April	May	June	July	Aug	Sept	Oct
Dollars Per Hundredweight												
California	\$15.23	\$15.18	\$14.85	\$14.16	\$13.99	\$14.11	\$13.48	\$13.43	\$13.53	\$13.23	\$14.09	\$14.10
Northeast Fed. Milk Order	\$16.55	\$16.70	\$16.37	\$15.50	\$16.01	\$15.26	\$14.95	\$14.50	\$14.96	\$15.09	\$15.54	\$15.68
Appalachian States	\$16.06	\$16.36	\$16.57	\$15.18	\$15.97	\$14.97	\$14.59	\$13.92	\$15.00	\$15.38	\$15.34	\$15.61
Southeast States	\$16.68	\$16.80	\$17.21	\$15.61	\$16.37	\$15.25	\$15.04	\$14.49	\$15.65	\$16.59	\$16.55	\$16.61
Florida	\$18.17	\$18.10	\$18.70	\$16.87	\$17.69	\$16.72	\$16.44	\$16.40	\$17.62	\$18.60	\$18.32	\$18.02
Ohio	\$16.16	\$16.51	\$15.99	\$15.41	\$15.41	\$15.08	\$14.62	\$14.22	\$14.60	\$14.67	\$15.03	\$15.54
Indiana	\$16.20	\$16.52	\$16.11	\$15.27	\$15.69	\$15.06	\$14.66	\$14.29	\$14.61	\$14.68	\$14.91	\$15.36
Michigan	\$15.92	\$16.09	\$15.58	\$15.13	\$15.13	\$14.64	\$14.18	\$13.78	\$14.34	\$14.50	\$14.85	\$15.44
Wisconsin	\$16.65	\$17.25	\$16.00	\$15.91	\$15.77	\$15.68	\$14.98	\$14.67	\$15.06	\$14.74	\$15.46	\$15.77
Minnesota	\$16.47	\$16.60	\$15.78	\$15.61	\$15.61	\$15.41	\$14.76	\$14.47	\$14.69	\$14.57	\$15.36	\$15.46
Illinois	\$16.41	\$16.87	\$15.88	\$15.42	\$15.52	\$15.28	\$14.61	\$14.25	\$14.73	\$14.59	\$15.26	\$15.80
Iowa	\$16.19	\$16.57	\$15.92	\$15.39	\$15.41	\$15.23	\$14.64	\$14.32	\$14.64	\$15.64	\$15.15	\$15.59
Southern Missouri	\$15.57	\$15.97	\$16.01	\$14.75	\$15.44	\$14.25	\$13.97	\$13.18	\$14.24	\$14.67	\$14.90	\$15.30
Corn Belt States	\$14.93	\$15.30	\$14.98	\$14.37	\$14.42	\$14.16	\$13.61	\$13.27	\$13.62	\$13.58	\$14.11	\$14.49
Western Texas	\$15.14	\$15.55	\$15.00	\$14.42	\$14.44	\$13.90	\$13.31	\$13.26	\$13.77	\$13.92	\$14.53	\$14.47
New Mexico	\$14.24	\$14.42	\$14.09	\$13.65	\$13.61	\$13.11	\$12.52	\$12.55	\$12.95	\$13.00	\$13.71	\$13.63
Northwest States	\$15.09	\$15.03	\$14.76	\$13.97	\$14.39	\$13.89	\$13.47	\$13.35	\$13.78	\$13.84	\$14.35	\$14.51
All Federal Order Areas	\$16.12	\$16.38	\$15.89	\$15.24	\$15.46	\$14.97	\$14.48	\$14.13	\$14.62	\$14.65	\$15.16	\$15.38

Mailbox Milk Prices for Selected States and the All Federal Milk Order Prices, November 2004-October 2005

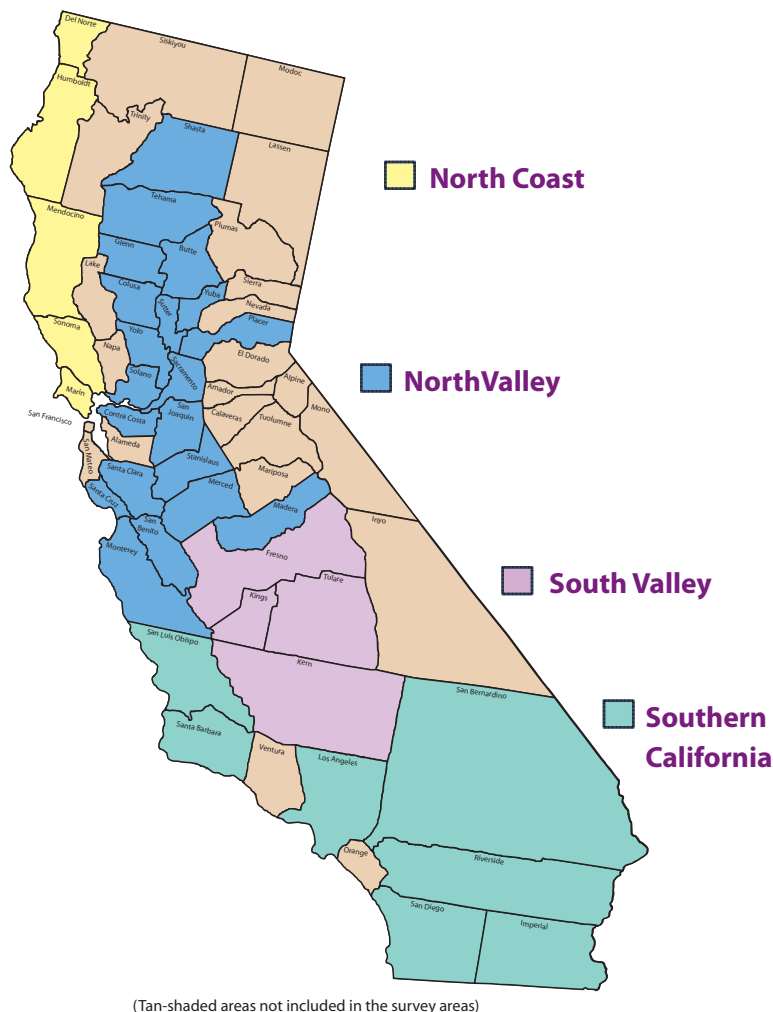


Production Cost Summary

During the hearing process, the Department considers the cost of producing market milk in establishing minimum prices for the various classes of milk. Since 1955, the Department's Cost of Production Unit has been collecting and summarizing cost data from California dairy farms. The staff reviews dairy farm financial records on-site and works with dairy managers to determine allocations of dairy expenditures to produce milk. Dairy producers find that the studies and resulting cost comparisons are a valuable tool in dairy management.

The Cost of Production Unit conducts surveys for four dairy regions (see map at right) within California (North Coast, North Valley, South Valley, and Southern California). Available data at the time this publication went to press was for the time period January-September 2005. For the first nine months of 2005, the statewide weighted average on-farm cost of milk production increased by 4.2% (3.5/8.7 fat-corrected milk, not including a return on investment or management) compared to the 2004 cost of production. This increase in cost of production can be attributed primarily to higher feed prices, primarily milk cow hay.

For more information on the cost of production in California, see the latest Cost of Production Annual.



Feed: A Look At California's Alfalfa Hay Industry in 2005

The California dairy industry experienced record high hay prices in 2005, averaging \$25-30 per ton higher than 2004. Low hay inventories, including light supplies at dairies, lower alfalfa hay acreage and production, and continued growth in dairy cow numbers were all contributing factors to these higher hay prices. The wet 2004 fall weather not only curtailed alfalfa hay planting but reduced the production of milk cow quality hay in September and October. This was a major reason for the lower alfalfa hay acres in 2005 but also a factor in lower carryover supplies. With the rain delayed start of the 2005 hay season combined with very hot July weather and army worm infestations in some areas, yields were disappointing through September. Higher input costs, including sharply higher fuel and fertilizer prices pushed hay breakeven prices higher for the hay growers. Trucking became a problem for some growers with fewer trucks available to haul hay the second half of the season, particularly after the spiking fuel prices following Hurricane Katrina.

Permanent crops have displaced many alfalfa hay acres the past three years, particularly almonds. The difference in water costs between growing almonds with drip irrigation vs. irrigating alfalfa can be substantial. Alfalfa hay acres may not surge to levels of 2002 because of the number of old alfalfa stands that were not taken out in 2005 because of record high hay prices. These older fields will most likely be rotated out in 2006.

The demand for higher test alfalfa hay has grown as dairy producers strive to increase milk production. Alfalfa hay growers should find strong demand on early cuttings in 2006 but could ease by late spring and summer. The amount of decline by the summer of 2006 will depend on alfalfa acres and production the first half of the season, available supplies of alfalfa hay in surrounding states, and profitability in the dairy industry.





Manufacturing Cost Summary/Processing Plants

The Department's Manufacturing Cost Unit collects and summarizes data from California dairy manufacturing plants. Any plant that produces Class 4a or Class 4b products may be asked to participate in the cost studies. The butter, nonfat dry milk (NFDM), and Cheddar cheese study participants typically account for

over 97 percent of these respective products manufactured in California. The Department annually reviews the cost of manufacturing milk into butter, NFDM, and Cheddar cheese with other factors. These costs are considered when establishing the manufacturing cost allowances for the minimum pricing formulas during the hearing process. The table below shows the

weighted average manufacturing costs per pound for butter (salted and unsalted), NFDM, Cheddar cheese, and skim whey powder. Costs included in this summary are packaging, processing labor, processing non-labor, general and administrative, return on investment and, for butter and Cheddar cheese, miscellaneous ingredients.

Costs include processing labor, non-labor processing, packaging, other ingredients (for butter and Cheddar cheese only), general and administrative and return on investments. All costs are unadjusted unless otherwise noted.

Weighted Average Manufacturing Costs, Butter, Nonfat Powder, Skim Whey Powder, and Cheddar Cheese 1989-2005

Date of Release		Butter		Nonfat Powder		Cheddar Cheese ¹		Skim Whey Powder	
Year	Month	Cost per Pound	Number of Plants	Cost per Pound	Number of Plants	Cost per Pound	Number of Plants	Cost per Pound	Number of Plants
1989	May	\$0.0879	11	\$0.1370	11	\$0.2251	9		
1992	July	\$0.0969	12	\$0.1443	12	\$0.2010	9		
1995	November	\$0.0928	9	\$0.1328	9	\$0.1981	8		
1996	December	\$0.0970	9	\$0.1333	9	\$0.1898	8		
1997	July	\$0.0958	8	\$0.1327	9	\$0.1840	9		
1999	February	\$0.0930	8	\$0.1277	9	\$0.1759	10		
2000	February	\$0.0957	8	\$0.1356	10	\$0.1693	9		
2001	October ²	\$0.1001	8	\$0.1590	11	\$0.1802	9		
2002	November	\$0.1208	7	\$0.1619	11	\$0.1775	9		
2002	December ³	\$0.1211	7	\$0.1512	11	\$0.1746	9		
2003	November	\$0.1235	7	\$0.1464	10	\$0.1632	9		
2004	November	\$0.1299	7	\$0.1560	10	\$0.1706	9	\$0.2675	4
2005	November	\$0.1368	8	\$0.1543	10	\$0.1769	7	\$0.2673	3

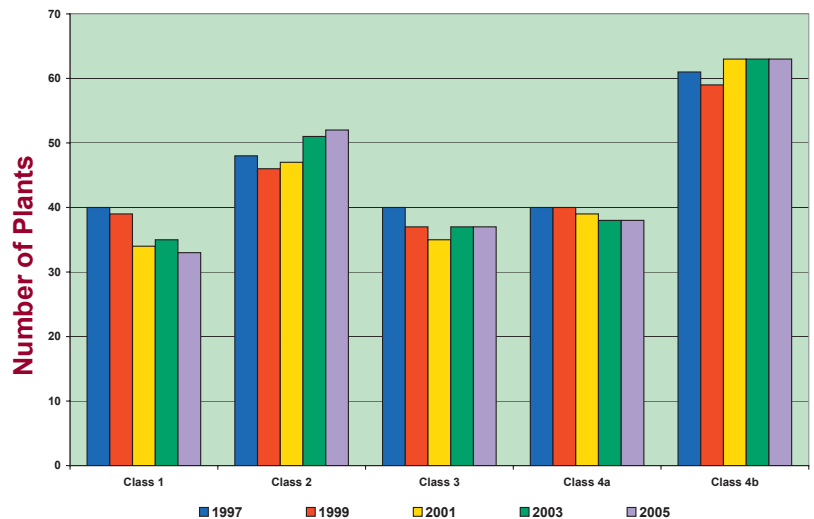
¹ For the 1996 Cheddar cheese cost study and subsequent cost studies, we have included costs associated with Cheddar cheese plants producing 500 pound barrels and 640 pound blocks. However, costs for packaging labor and packaging expenses were replaced with the average of those costs associated with 40 pound block plants.

² Includes the cost studies completed for periods between January 1998 and December 1999 and adjusted for utility costs. The utility cost adjustments were made using each plant's invoices for energy costs for August 2001.

³ Includes the cost studies for periods between July 2000 and December 2001 and adjusted for August 2002 utility invoices as well as 2002 data updating wages, payroll taxes and fringe benefits for all plants.

Categorization of California Milk Processing Plants Based Upon Classification of Processed Products

California milk processing plants are experiencing trends similar to what other dairy processing plants across the U.S. are experiencing: more milk processed at fewer dairy plants. From 1960 to 2005, the number of California processing plants decreased from about 600 to 117. In addition, dairy processing plants of the 1960's often produced a wide range of products, whereas today, plants tend to specialize in the processing of only a few dairy products. The chart depicts the historical trend for the number of milk processing plants between 1997-2005. Note that the sum of all plants for 2005 exceeds the total of 117 plants because some plants are still multi-class. Interesting that while the pounds of milk produced has steadily increased, the number of plants handling the milk production has decreased.





Classification of Dairy Products

PRODUCT DESCRIPTION

CLASSIFICATION

Acidified Half-and-Half	1
Fluid Milk Products:	
Acidophilus	1
Concentrated	1
Filled	1
Flavored	1
High Nutrient	1
Imitation	1
With Lactobacillus Acidophilus Culture	1
Lactose Reduced	1
Modified	1
Whole, Reduced Fat, Lowfat, Fat Free	1
Half-and-Half	1
Kefir and Fruit Kefir	1
Milk Drink	1
Milk Drink Mix	1
Acidified Buttermilk	2
Acidified Half-and-Half Dressing	2
Buttermilk	2
Clotted Cream	2
Condensed (Sweetened and Unsweetened)	2
Milk	2
Lowfat Milk	2
Fat Free Milk	2
Cottage Cheese:	
Acidified or directly set	2
Creamed	2
Creamed Spread	2
Lowfat	2
Fat free	2
Partially Creamed	2
Uncreamed	2
Cream	
Acidified Cream	2
Coffee Cream	2
Light Cream	2
Table Cream	2
Whipping Cream	2
Cream Dressing (Sour and Acidified Sour)	2
Dry Whey (from Cottage Cheese)	2
Egg Nog (all varieties)	2
Evaporated (Sweetened and Unsweetened):	
Cream	2
Milk	2
Lowfat Milk	2
Fat free Milk	2
Fromage Frais (Lowfat, Fat free)	2
Hoop Cheese	2
Sour Cream and Light Sour Cream	2
Sour Flavored Half-and-Half	2
Sour Half-and-Half Dressing	2
Ultra High Temperature (UHT) and	
Fluid Flavored Milk (Whole, Lowfat, Fat Free)	1
Fluid Milk (Whole, Lowfat, Fat Free)	1
Half-and-Half	1

These products are assigned to Class 2 if packaged in pre-sterilized containers to meet out-of-state requirements and sold outside California.

These products must be assigned to the classification of ultimate usage when utilized in bulk by handlers, but are assigned to Class 4a when sold to consumers.

These products are assigned to Class 4a if sold outside the U.S.

These products are assigned to the classification of ultimate usage when utilized in bulk by handlers, but are assigned to Class 4a when sold to consumers.

These products are assigned to Class 4a if sold outside the U.S.

These products are assigned to Class 2 if sold for use outside California and Class 4a if sold for use outside the 48 contiguous states.





Classification of Dairy Products, Continued

PRODUCT DESCRIPTION

CLASSIFICATION

Cream	2	These products are assigned to Class 4a if sold outside the U.S.
Dairy Spread	2	
Egg Nog	2	
Flavored Cream	2	
Flavored Drink	2	
Lowfat Milk	2	
Milk	2	
Milk Drink Mix	2	
Sour Cream	2	
Sour Flavored Half-and-Half	2	
Ultrapasteurized Half-and-Half (Hermetically)	2	These products are assigned to Class 4a if sold outside the U.S.
Whipped Cream (Cream Topping)	2	
Whipped Nonfat Yogurt Topping	2	
Yogurt (Flavored, Lowfat, Fat Free)	2	
Yogurt Drink (Lowfat, Fat Free)	2	
Yogurt Sherbet	2	
Frozen Dairy Dessert (Mix, Lowfat, Fat Free)	3	These products are assigned to Class 4a if sold outside the U.S.
Frozen Yogurt (Mix, Lowfat, Nonfat)	3	
Ice Cream and Ice Milk:		
Diabetic	3	
Dietetic	3	
Imitation	3	
Mix	3	
Nonfat	3	
Light Dairy Dessert	3	
Quiescently Frozen Confections	3	
Sherbet	3	These products are assigned to Class 4a if sold outside the U.S.
Butter	4a	
Dry Buttermilk	4a	
Nonfat Dry Milk	4a	
Whole Dry Milk	4a	
Cheese:		
Bakers	4b	
Blue	4b	
Brick	4b	
Cheddar	4b	
Colby	4b	
Cream	4b	
Full Skim	4b	
Gorgonzola	4b	
Limburger	4b	
Monterey Jack	4b	
Mozzarella	4b	These products are assigned to Class 4a if sold outside the U.S.
Muenster	4b	
Neufchatel	4b	
Parmesan	4b	
Part Skim	4b	
Provolone	4b	
Ricotta	4b	
Romano	4b	
Swiss	4b	
Dry Modified Whey	4b	
Dry Whey (from other Cheese)	4b	

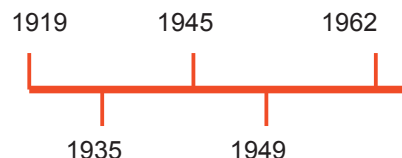




California Historic Timeline



CALIFORNIA DAIRY INDUSTRY HISTORIC TIMELINE (As Related to Government)

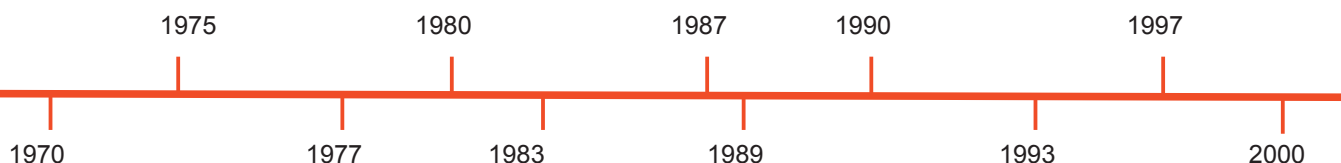


- 1919 California Department of Food and Agriculture established.
Milk and Dairy Foods Control Branch established.
- 1932 Los Angeles Milk Arbitration Board: State-sponsored voluntary agreement among producers and handlers to set producer and resale prices.
- 1933 Federal license (order) established in Southern California – immediately enjoined by federal courts.
- 1935 Young Act - Establishes minimum producer pricing. Dairy Marketing
- 1937 Desmond Act - Establishes minimum wholesale and retail pricing (repealed 1978).
Minimum producer prices extended to all classes of milk.
- 1945 Dairy Products Promotion Act - Establishes the Dairy Council of California to foster education and promotional programs.
- 1947 Unfair Practices Act - Regulates unfair dairy business practices.
Prohibits sales below cost.
- 1949 Federal Price Support for dairy industry established.
- 1955 Major Amendment of Young Act: Basis for pricing changed.
- 1962 AB 2742 - Establishes component pricing for fluid milk products.
(butterfat, solids-not-fat, and fluid carrier).
California introduces reduced fat (2-10) milk.
- 1965 Component pricing for manufactured products begins, based solely on finished product prices for butter and nonfat dry milk.
- 1967 Gonsalves Milk Pooling Act - Establishes a statewide pooling of producer revenues, using a system of quota, base and overbase.
- 1969 Gonsalves Milk Pooling Act becomes effective.
California Milk Advisory Board established.
- 1970 California Manufacturing Milk Advisory Board established.
- 1973 Quality assurance dating was extended to most dairy products.
Forward pricing for Class 2 and 3 products began.
Suspension of minimum wholesale pricing began.
- 1974 AB 1570 - Requires cottage cheese, buttermilk, and sour cream dressing be made from market grade milk.
- 1975 Minimum retail prices suspended in Zone 1 of the North-Central Valley area.
- 1977 Minimum retail and wholesale prices suspended in all areas.
Market Milk Enforcement consolidated with Dairy Marketing.
- 1978 AB 1110 - Desmond Act repealed. All original quota equalized.
Authority to establish formula pricing. Economic formula to determine Class 1 prices implemented. Established two-month pricing periods.
- 1981 Transportation credits (plant to plant)
- 1982 Transportation allowances (ranch to plant)





California Historic Timeline



- 1980 Fluid milk usage goes below 50 percent of total milk production on an annual basis.
- 1982 AB 903 - Class 4 divided into Class 4a and Class 4b.
- 1983 Dairy and Tobacco Adjustment Act of 1983 - Dairy Diversion Program: first federal use of supply control in the dairy industry.
- 1984 AB 910 - Milk Pooling statutes revised relative to issuance of new quota. Quota allocated based on Class 1 growth above historic high. Implementation of \$0.15 per hundredweight national promotion assessment.
- 1985 1985 Farm Bill - Dairy Termination Program
- 1987 SB 29 - Establishes Milk Producers Security Trust Fund.
- 1989 Class 4b prices based on cheese prices began. Two-month pricing for Classes 2 and 3 began.
- 1990 Lowfat (1-11) milk introduced.
- 1991 Fluid milk usage goes below both Class 4a and 4b usage
- 1993 SB 688 - Milk Pooling Statutes revised to temporarily provide a fixed Class 1 price differential of \$1.70, between quota and overbase, from January 1, 1994 to January 1, 1995 (became permanent in 1994), through AB 1285.
SB 72 - Authorizes dairy product cross-promotion. Yogurt reclassified from Class 1 Class 2 milk product. Quota allocation now based on Class 1 and 2 SNF growth. Cost of Production and consumer purchasing power removed from Class 1 pricing formula. Now formula only uses Commodity Reference Price.
California Milk Processors Board established.
California Dairy Advisory Committee established.
- 1996 SB 1885 - Changes accounting for restricted use market milk. Eliminates producer's ability to de-pool their milk on a monthly basis by giving up their Grade A permit (became permanent in 1998), through AB 1058.
- 1997 Changed the pool accounting for other source milk on July 1.
- 1999 California Milk Price Survey initiated as a result of SB 419, legislation passed in September 1999 (survey was discontinued when SB 419 sunset expired 12/31/2001).
- 2000 As a result of changes to both systems, pricing in California and Federal Milk Marketing Orders become much more similar.
- 2002 Introduction of Federal Milk Income Loss Contract (MILC) program to supplement price support system.
- 2003 Major amendment to transportation credits and allowances, including establishing allowances within Southern California. Eliminated processor's ability to depool their milk on a monthly basis, effective January 1, 2004
- 2004 Minor amendments to transportation credits and allowances, including establishing a North Bay receiving area.
- 2005 Amendments to manufacturing cost allowances in the Class 4a/4b pricing formulas.





Contacts for the California Dairy Industry



California Department of Food and Agriculture
1220 N Street, Sacramento, CA 95814
Homepage Website: <http://www.cdfa.ca.gov/dairy>
Email address: dairy@cdfa.ca.gov

Office of the Secretary

A.G. Kawamura, *Secretary*, 654-0433
A.J. Yates, *Undersecretary*, 654-0321
Kim Myrman, *Deputy Secretary*, 654-0321
David Nunenkamp, *Deputy Secretary*, 654-0321
Dr. Richard Breitmeyer, DVM, *State Veterinarian*,
654-0321

ANIMAL HEALTH AND FOOD SAFETY SERVICES

Dr. Annette Whiteford, DVM, *Director*, 654-0881,
Fax 653-4249

Animal Health Branch

Kenneth Thomazin, DVM, *Chief*, 654-1447, Fax 653-2215

District Veterinarians

Redding: Charles Palmer, DVM, (530) 225-2140
Modesto: David Willoughby, DVM, (209) 491-9350
Tulare: Melanie Swartz, DVM, (559) 685-3500
Ontario: David Kerr, DVM, (909) 947-4462

Environmental Programs

Alfonso Vargas, *Environmental Coordinator*, 653-0873

Livestock Identification Branch

Greg Lawley, *Chief*, 654-0889, Fax 653-5190

Regional Administrators

Northern California: John Romano (530) 347-5721
North Central California: John Romano, (209) 491-9345
South Central California: Dennis Tosti, (559) 584-4855
Southern California: Wayne Williams, (909) 923-8721

Meat & Poultry Inspection Branch

Dennis Thompson, DVM, *Chief*, 654-0504, Fax 654-2608

District Veterinarians

Sacramento: Doug Hepper, DVM, 654-0504
Fresno: Herbert Radigtsch, DVM, (559) 233-7318
Ontario: Namara Garbaba, DVM, (909) 773-0079

Area Code is (916) unless otherwise noted.

Milk & Dairy Foods Control Branch

Stephen Beam, *Chief*, 653-6681, Fax 654-7512

Licensing & Inspection Fees

Facilities, Brandi Danae, 654-0916
Personal Licenses, Karen Chavez, 654-0917

Dairy Program Coordinator

Kristen Dahl, 654-1981

Regional Administrators

Sacramento: George Salsa, (209) 466-7186
Oakland: John Macy, (510) 622-4810
Fresno: David Krall, (559) 445-5506
Ontario: Kristen Dahl (*Acting*), (909) 923-9929

MARKETING SERVICES

Kelly Krug, *Director*, 445-5055, Fax 445-2655

Dairy Marketing Branch

David K. Ikari, *Chief*, 341-5988, Fax 341-6697

California Dairy Statistics Service

Karen Dapper, 341-5988, Fax 341-6697

Economics/Pricing

Candace Gates, 341-5988, Fax 341-6697

Production Cost Unit

Mike Francesconi, 341-5988, Fax 341-6697

Manufacturing Cost Audits

Venetta Reed, 341-5988, Fax 341-6697

Enforcement & Unlawful Practices

David Ikari, 341-5988, Fax 341-6697

Milk Pooling Branch

John Lee, *Chief*, 341-5901, Fax 341-5995

Pool Operations

Don Shippelhouse, 341-5901, Fax 341-5995

Pool Audits

Nancy Hartman, Dan Roderick, Marlene Wride,
Sunday Ikenador, 341-5901, Fax 341-5995

Producer Security Assurance, Licenses/Bonds

Bob Maxie, 341-5901, Fax 341-5995

Marketing Branch

Lynn Morgan, *Chief*, 341-6005, Fax 341-6826
Dennis Manderfield, Glenn Yost





California Department of Food and Agriculture
Dairy Marketing Branch
1220 N Street
Sacramento, CA 95814
(916) 341-5988 / Fax (916) 341-6697
www.cdfa.ca.gov/dairy