



California Department of Food & Agriculture Plant Pest Diagnostics Center HLB Testing Program May 2020

Monthly Lab Totals – Fig. 1

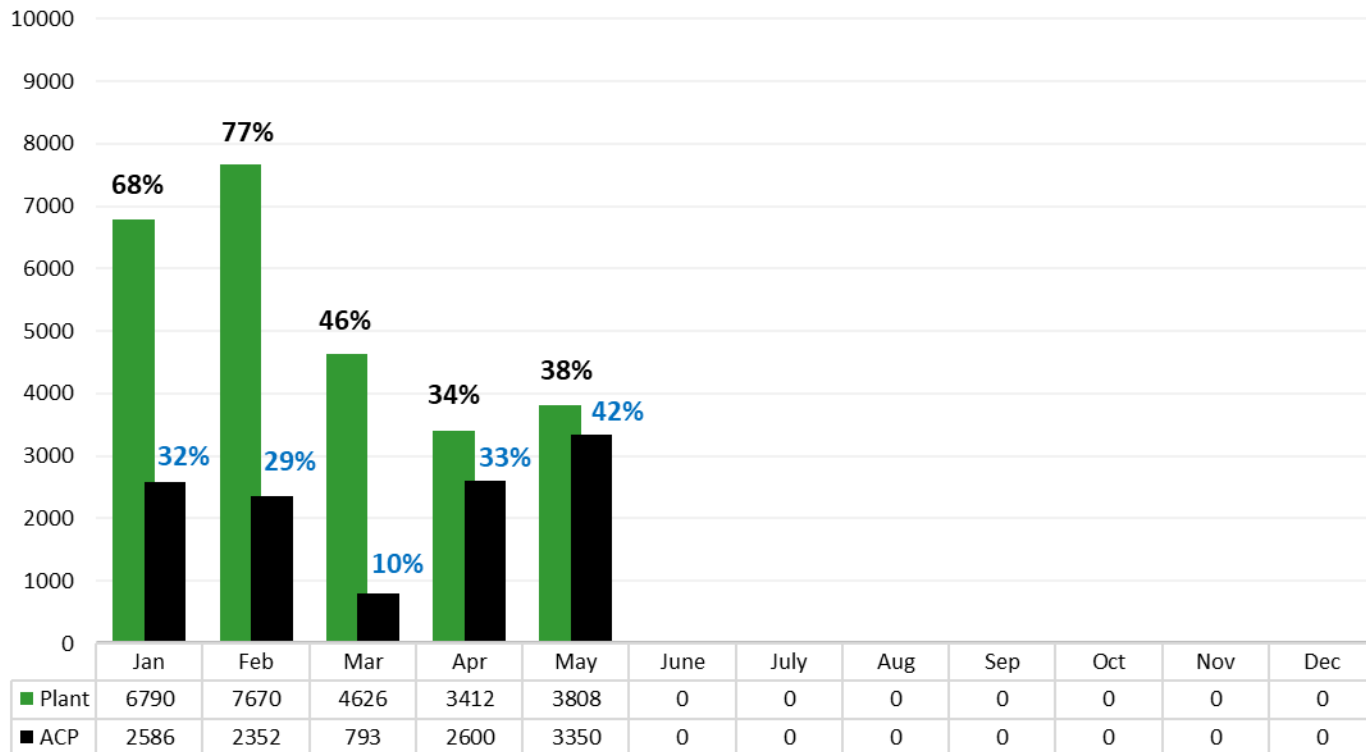
HLB Yearly Totals – Fig. 2

Tally of Positive Detections by County and City – Tables 1 and 2

Map of HLB Positive Trees – Fig. 3

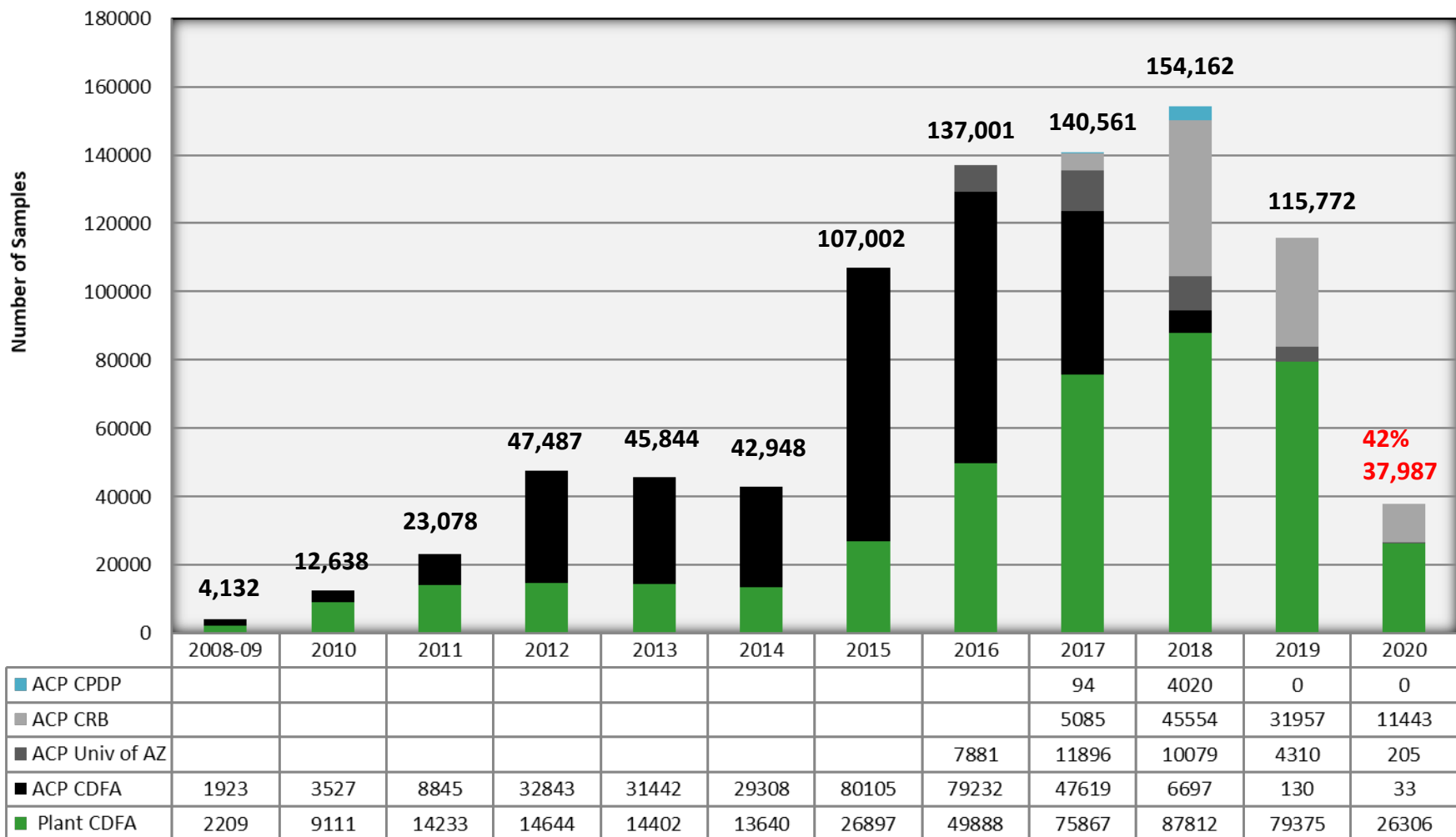
If you have any questions, please call or email me at 916-738-6710 lucita.kumagai@cdfa.ca.gov.

Fig 1. 2020 CDFA/CRB lab totals for plant and ACP samples and the % capacity use per month.



Maximum sample capacity per month: Plant 10K, ACP 8K

Fig 2. Number of samples submitted for HLB testing per year from 2008 to May 2020.



Combined total of plant and ACP samples tested from 2008 – May 2020 is 868,612.

Table 1. Tally of positive detections by county and city as of 5/20/2020

County	Sites	Trees	ACP
Orange	69.8%	73.6%	68.3%
LA	27.6%	24.5%	26.0%
Riverside	1.7%	1.4%	4.0%
San Bernardino	0.9%	0.5%	1.7%
Total	100%	100%	100%

Positives	# Sites	# Trees	# ACP samples
Orange County			
Anaheim	243	343	88
Garden Grove	312	490	56
La Habra	2	3	1
Fullerton	2	1	2
Santa Ana	199	279	30
Westminster	127	193	11
Yorba Linda	2	1	2
Orange	43	53	10
Tustin	11	14	3
Huntington Beach	6	6	0
Placentia	8	7	2
Fountain Valley	2	5	0
Total	957	1395	205
Los Angeles County			
Alhambra	1	1	0
San Gabriel	60	76	6
Cerritos	3	2	2
Hacienda Heights	2	2	1
La Puente	4	3	1
Lakewood	2	2	0
Norwalk	4	3	2
Pico Rivera	104	123	36
Rosemead	23	28	4
Whittier	103	128	18
Duarte	1	2	1
Temple City	1	1	1
Montebello	62	88	1
El Monte	3	2	1
Compton	1	1	0
Glendora	1	0	1
La Mirada	4	3	3
Total	379	465	78
Riverside County			
Riverside	7	7	3
Corona	16	19	9
Total	23	26	12
San Bernardino County			
San Bernardino	2	1	1
Montclair	4	4	0
Ontario	2	1	1
Colton	4	4	3
Total	12	10	5
Grand Total	1371	1896	300

Table 2. Tally of positive trees by city per year

Cities	2012	2015	2016	2017	2018	2019	2020	Total
Anaheim				132	109	90	12	343
Garden Grove				13	348	115	14	490
La Habra				1	0	2	0	3
Fullerton				1	0	0	0	1
Santa Ana					44	168	67	279
Westminster					15	175	3	193
Yorba Linda					1	0	0	1
Orange					31	14	8	53
Tustin					5	8	1	14
Huntington Beach						6	0	6
Placentia						7	0	7
Fountain Valley							5	5
Hacienda Heights	1	0	1	0	0	0	0	2
San Gabriel		10	17	33	10	6	0	76
Cerritos			1	1	0	0	0	2
Pico Rivera				67	35	18	3	123
Whittier				18	80	23	7	128
La Puente					0	3	0	3
Lakewood					1	1	0	2
Norwalk					1	0	2	3
Rosemead					17	11	0	28
Duarte					2	0	0	2
Temple City						1	0	1
Montebello						84	4	88
El Monte						1	1	2
Compton						1	0	1
Alhambra						1	0	1
La Mirada							3	3
Glendora								0
Riverside				3	0	4	0	7
Corona						15	4	19
Montclair						2	2	4
San Bernardino							1	1
Ontario							1	1
Colton							4	4
Total	1	10	19	269	699	756	142	1896

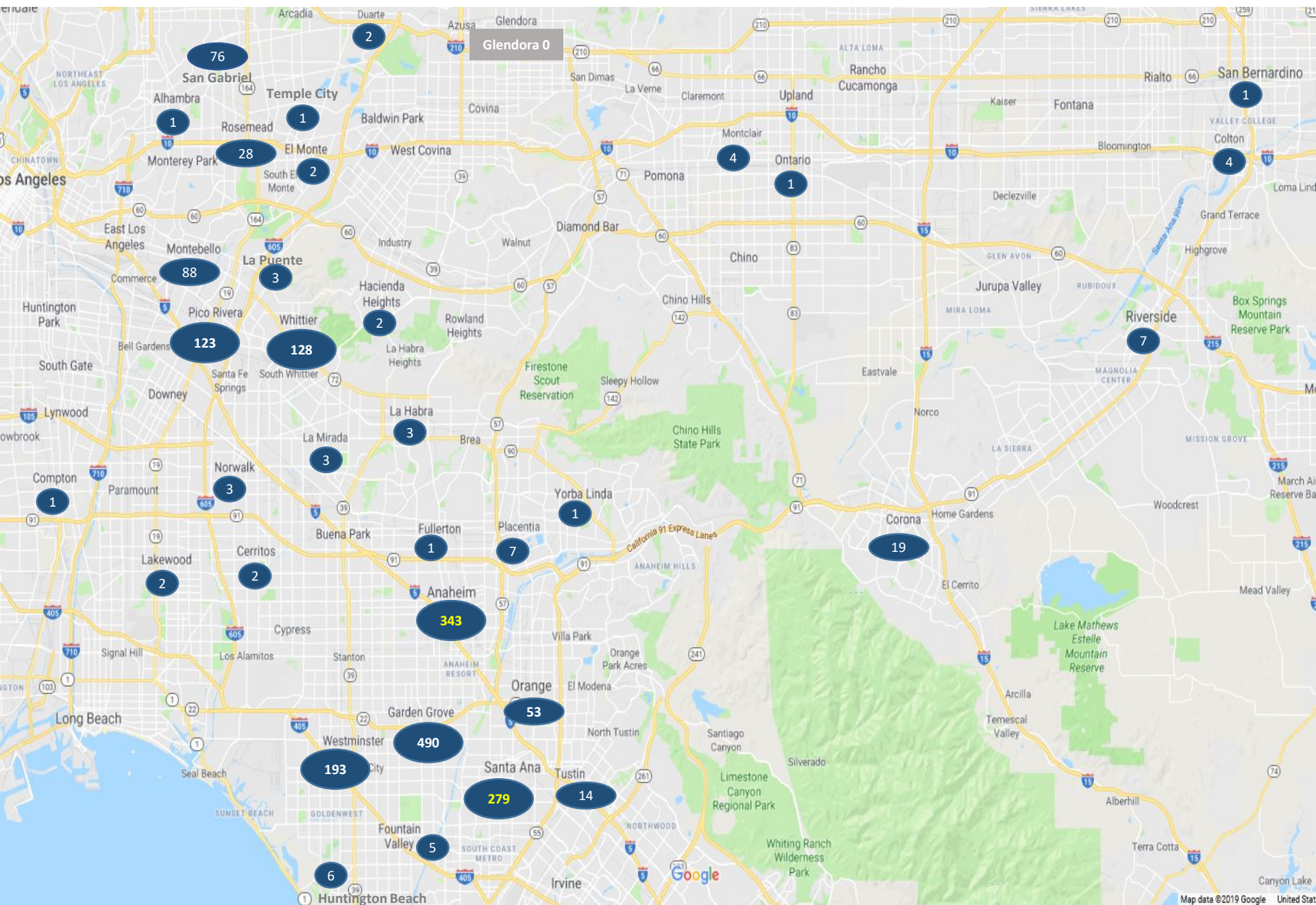
Orange

Los Angeles

Riverside

San Bernardino

Fig 3. HLB+ Trees. As of 5/20/2020, a total of **1,896 HLB+** trees have been detected and removed: **465** from Los Angeles Co, **1,395** from Orange Co, **26** from Riverside, and **10** from San Bernardino Co.





Southern District HLB Treatment Updates

June 3, 2020



HLB Delimitation Treatment Areas

HLB AREA	TREATMENT DATES	TOTAL PROPERTIES	PROPERTIES TREATED	REFUSALS/ NO CONTACT	PERCENT COMPLETE	COMMENTS
Santa Ana 37	4/20 - 5/20	458	159	1/0	61%	Residents schedule the appointment
Santa Ana 35	3/9 - 5/21	378	51	6/0	45%	
Anaheim 76	4/14 - 5/21	21	5	0/0	29%	
Anaheim 73	4/13 - 5/6	45	9	0/0	49%	
Huntington Beach 6	4/29 - 5/21	447	69	6/0	20%	
Garden Grove 47	4/08 - 5/20	232	46	0/0	25%	



HLB Delimitation Treatment Areas

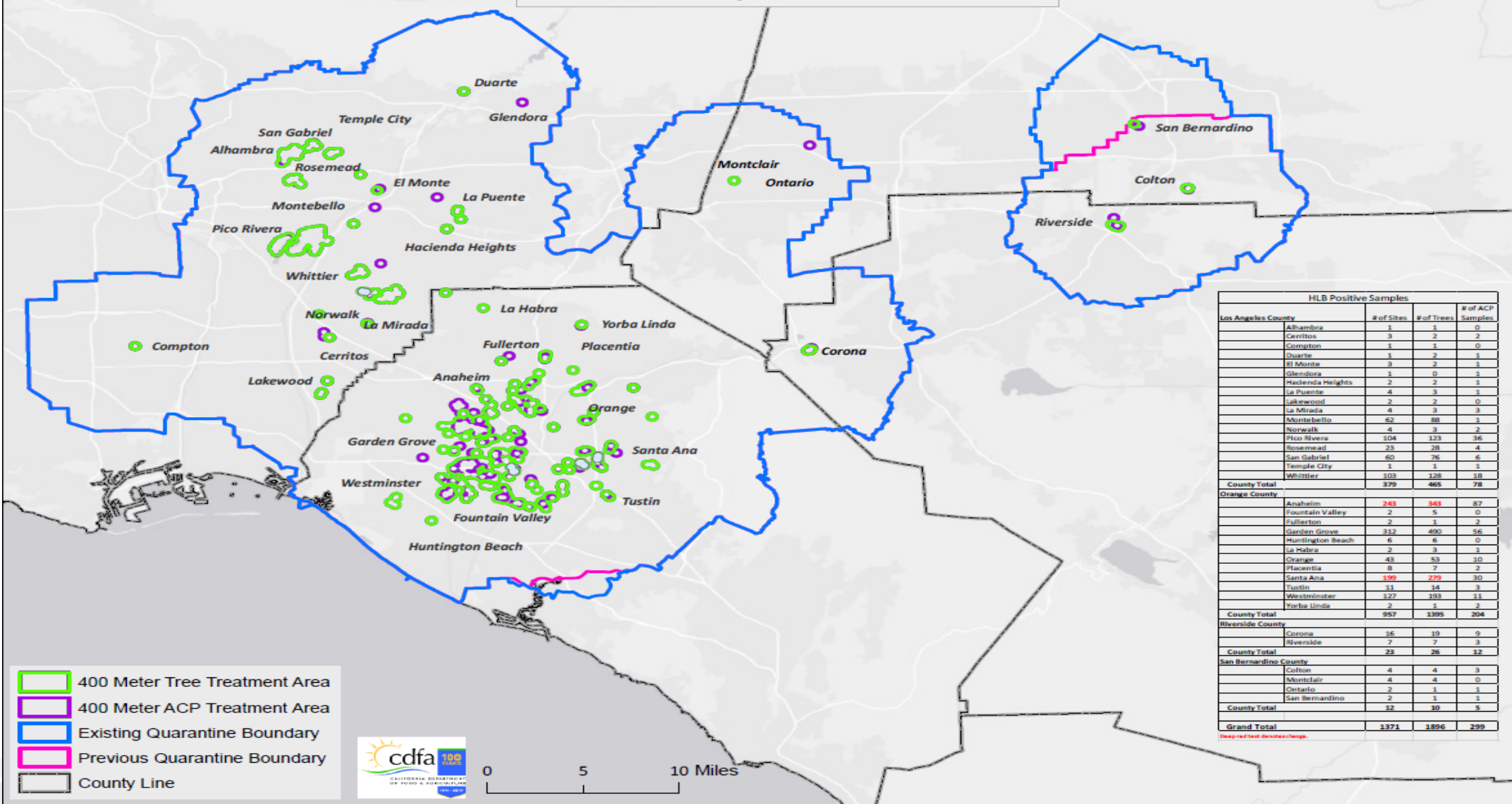
HLB AREA	TREATMENT DATES	TOTAL PROPERTIES	PROPERTIES TREATED	REFUSALS/ NO CONTACT	PERCENT COMPLETE	COMMENTS
Corona 5	4/27 - 5/14	311	20	2/279	10%	Residents schedule the appointment
San Bernardino 1	2/15 – 5/20	858	53	0/0	8%	
La Mirada 1	5/11 - 5/21	692	67	0/0	10%	
Norwalk 4	5/19 - 5/21	672	40	0/0	7%	



Public Meetings

Orange County Pending June 3, 2020	Los Angeles County May 20, 2020
Santa Ana 36, 38 - 41	Whittier
Westminster 20, 21 and Anaheim 75	El Monte and South El Monte
Garden Grove 48 - 51 & Orange 21-27	Pico Rivera
Due to COVID-19, we are conducting public meetings via webinars only.	

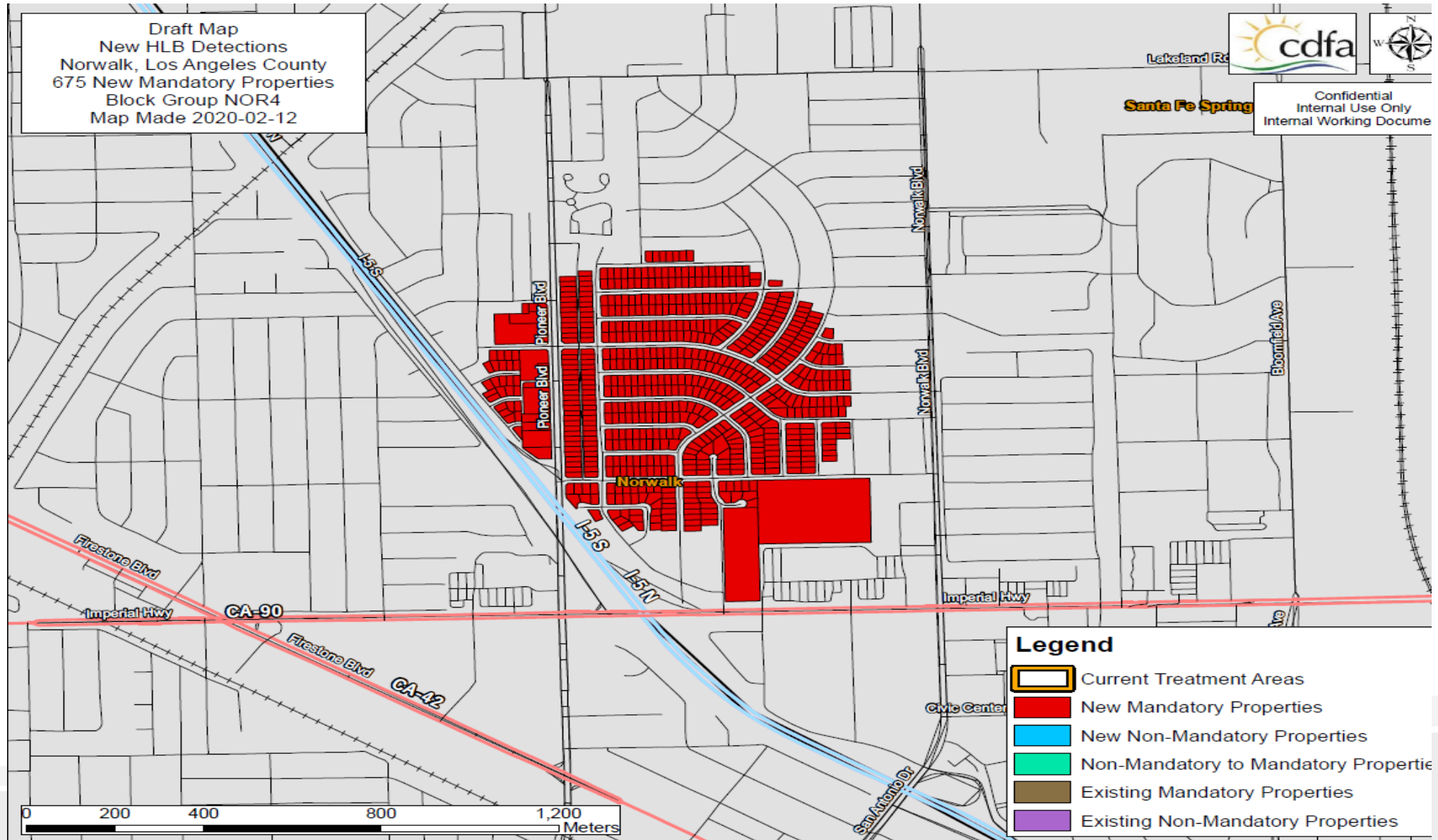
HLB Quarantine and Treatment Areas May 22, 2020



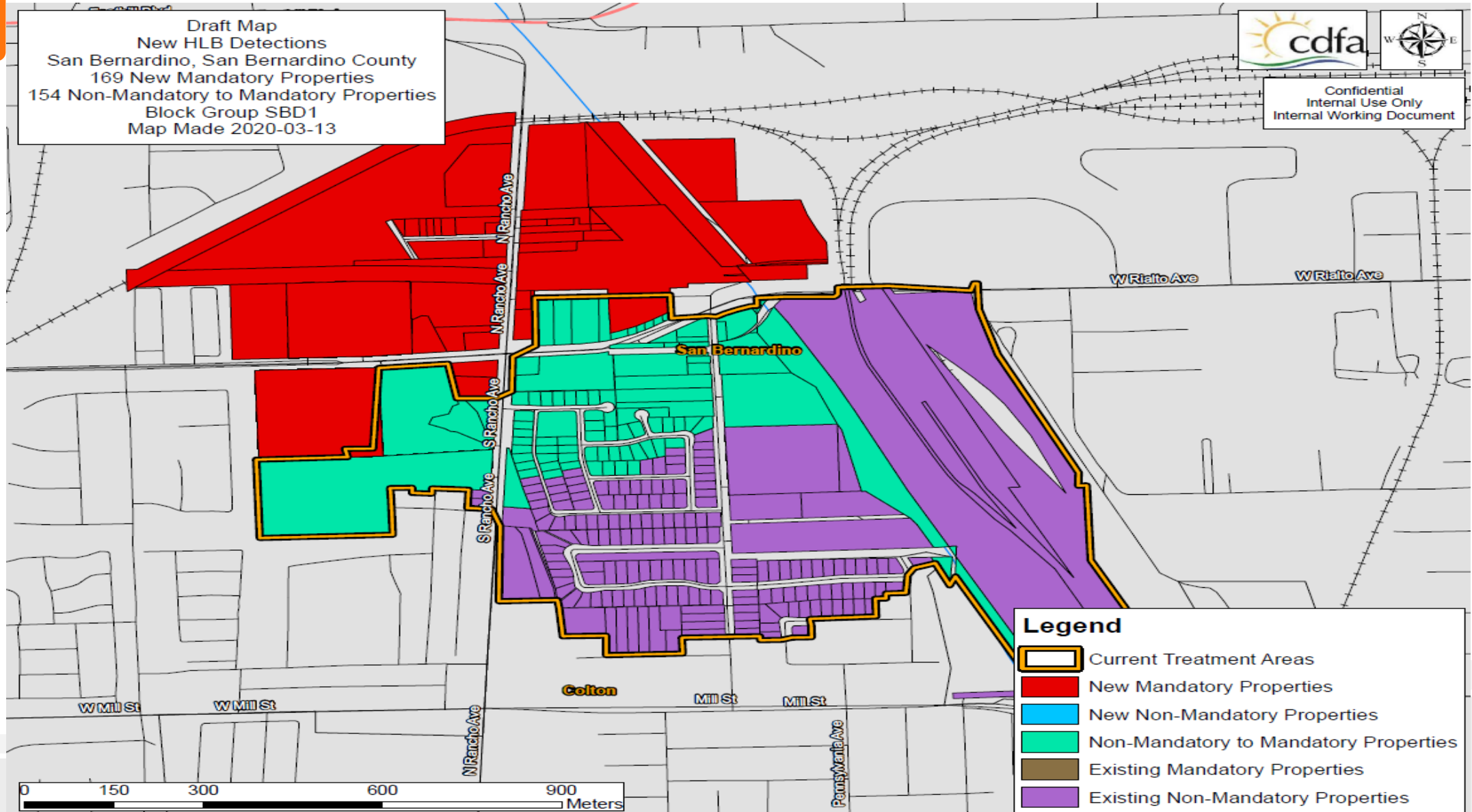
	# of Sites	# of Trees	# of ACP Samples
Los Angeles County			
Alhambra	1	1	0
Cerritos	3	2	2
Compton	1	1	0
Duarte	1	2	1
El Monte	3	2	1
Glendora	1	0	1
Hacienda Heights	2	2	1
La Puente	4	3	1
Lakewood	2	2	0
La Mirada	4	3	3
Montebello	62	88	1
Norwalk	4	3	2
Pico Rivera	104	123	36
Rosemead	23	28	4
San Gabriel	60	76	6
Temple City	1	1	1
Whittier	103	128	18
County Total	379	465	78
Orange County			
Anaheim	243	343	87
Fountain Valley	2	5	0
Fullerton	2	1	2
Garden Grove	312	490	56
Huntington Beach	6	6	0
La Habra	2	3	1
Orange	43	53	10
Placentia	8	7	2
Santa Ana	199	279	30
Tustin	11	14	3
Westminister	127	193	11
Yorba Linda	2	1	2
County Total	957	1395	204
Riverside County			
Corona	16	19	9
Riverside	7	7	3
County Total	23	26	12
San Bernardino County			
Colton	4	4	3
Montclair	4	4	0
Ontario	2	1	1
San Bernardino	2	1	1
County Total	12	10	5
Grand Total	1371	1896	299

(Deep red text denotes change)

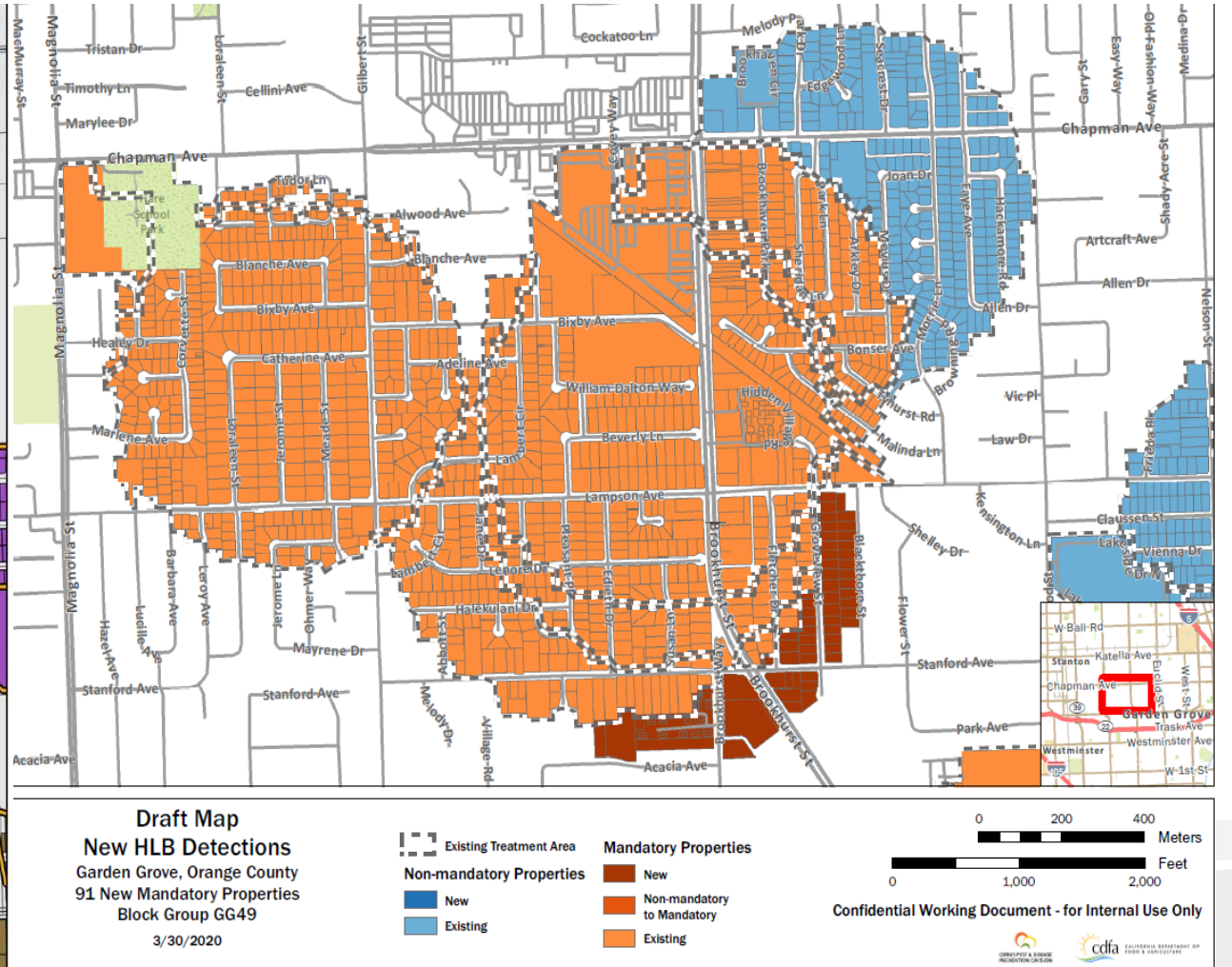
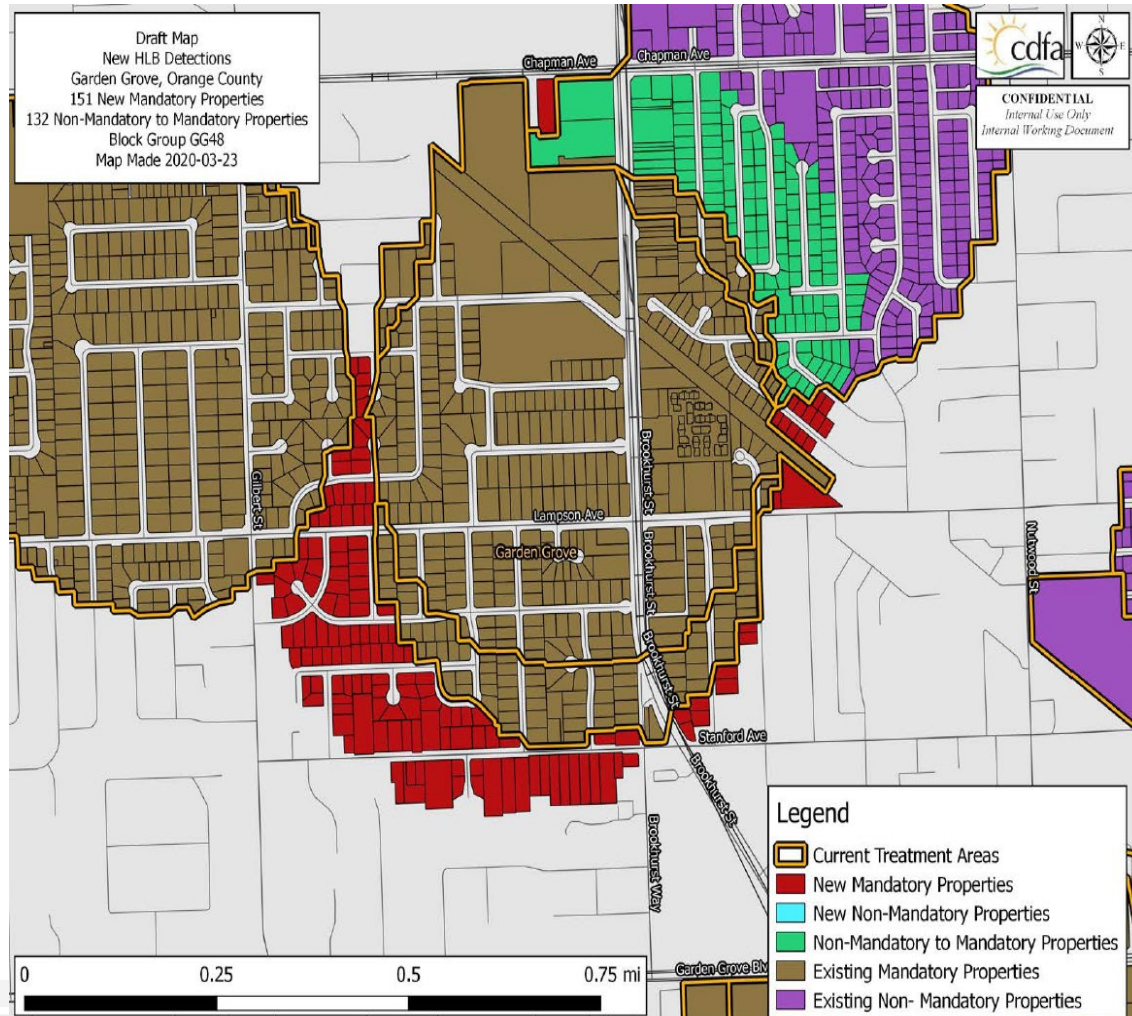
Norwalk 4



San Bernardino 1



Pending Areas- Garden Grove 48 and 49



Regulatory Working Group Update

CPDPC – OPERATIONS SUBCOMMITTEE MEETING

JUNE 3, 2020

Working Group Tasks

Evaluate mitigation requirements for HLBQ growers

Evaluate mitigation requirements for HLBQ certified producers

Evaluate ACP Bulk Citrus Regional Quarantine Zone 5

HLBQ Mitigations Requirements

Mitigations for HLBQ growers for intra-HLBQ movement

- Add grate cleaning as option

Mitigations for HLBQ growers for movement out of HLBQ

- Add grate cleaning as part of dual mitigation

Mitigations for HLBQ certified producers

- No change – must be completely free from stems and leaves

Adding Grate Cleaning

ADVANTAGES

Provides additional option for single and dual mitigations

Organic option for intra-HLBQ movement

Reduces unharvested groves

DISADVANTAGES

Effectiveness is reliant on no human error

Increased CAC inspections and cost

Increased oversight from CDFA regulatory

Mitigations for HLBQ Growers

Table 2: Movement of Citrus Grown in an HLB Quarantine Area

Shipping Fruit Grown In	Shipping to a Packer/Processor	
	Within the Same Contiguous HLB Quarantine Area	Outside of HLB Quarantine Area OR Different HLB Quarantine Area
HLB Quarantine Area	Field Cleaned by Machine OR Grate Cleaned* OR Spray & Harvest AND Transport Completely Tarped or in a Fully Enclosed Vehicle AND Complete HLB Pest Risk Mitigation Form	Wet Wash OR Field Cleaned by Machine/Grate Cleaned* and Spray & Harvest AND Transport Completely Tarped or in a Fully Enclosed Vehicle AND Complete HLB Pest Risk Mitigation Form

***Grate cleaned citrus must be pre-approved by CDFA per #2 on page 2 of this document.**

HLBQ CPs – No Stems or Leaves

ADVANTAGES

Small quantity of fruit

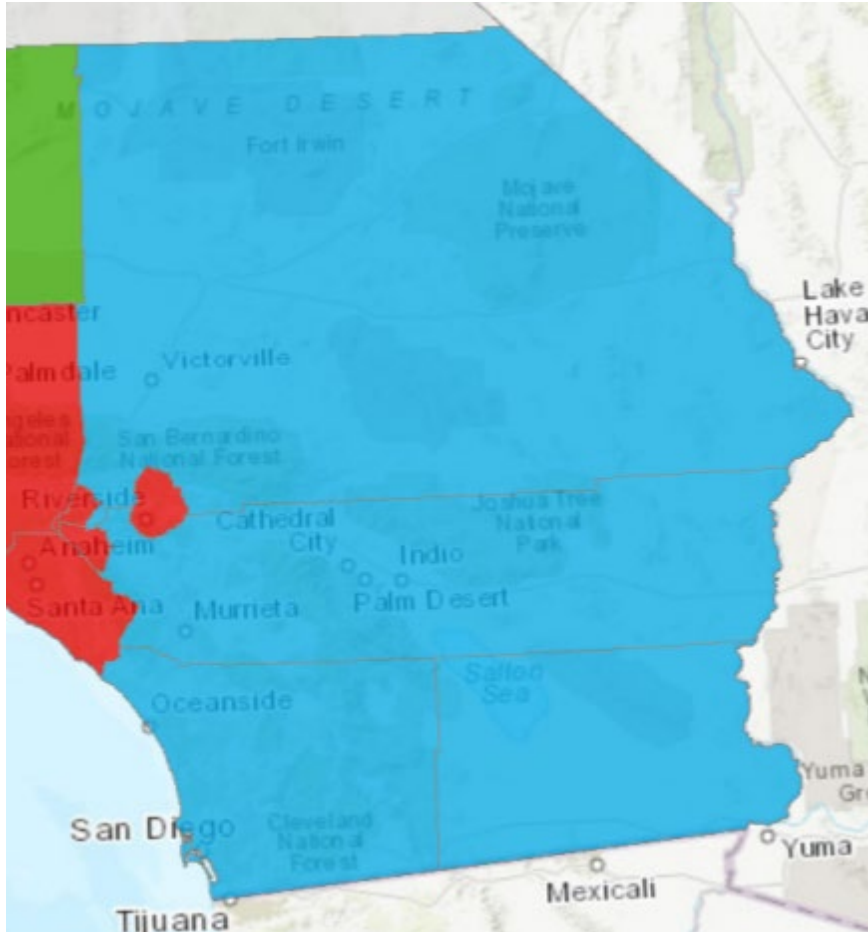
Feasible enforcement

Helps prevent non-compliant fruit movement

DISADVANTAGES

CPs can move fruit out of HLBQ without dual mitigation

Evaluating ACP Bulk Citrus Zone 5



Current Zone 5

- Imperial, Riverside, San Bernardino, and San Diego

Must use pest risk criteria

Requires CAC approval

Must follow physical boundaries (i.e. roads, rivers, or railways)

Splitting Zone 5

ADVANTAGES

Reduces unintended consequence of revoking QC 1486

Fruit moving to Imperial needs mitigation

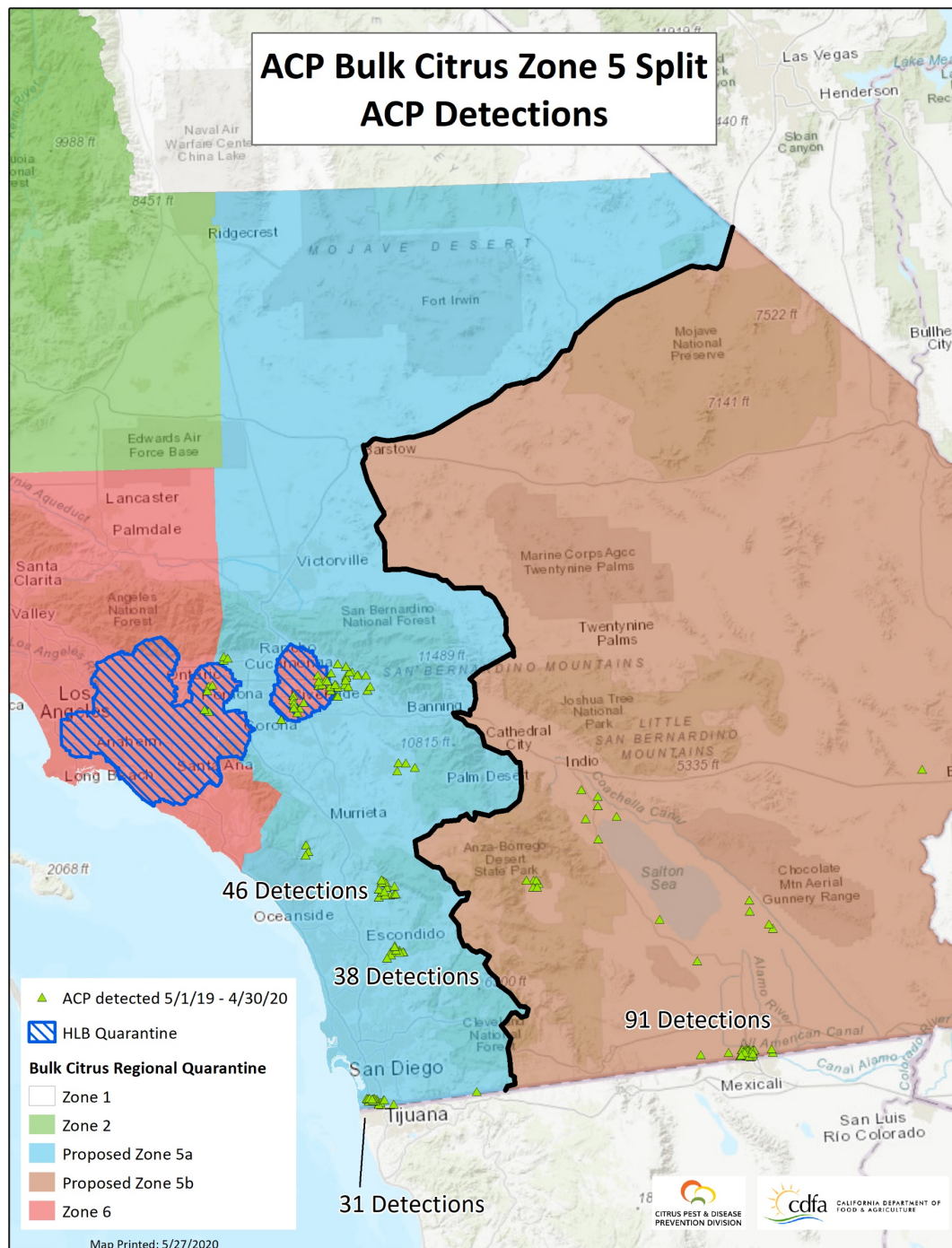
Protects desert citrus from ACP hitchhikers

DISADVANTAGES

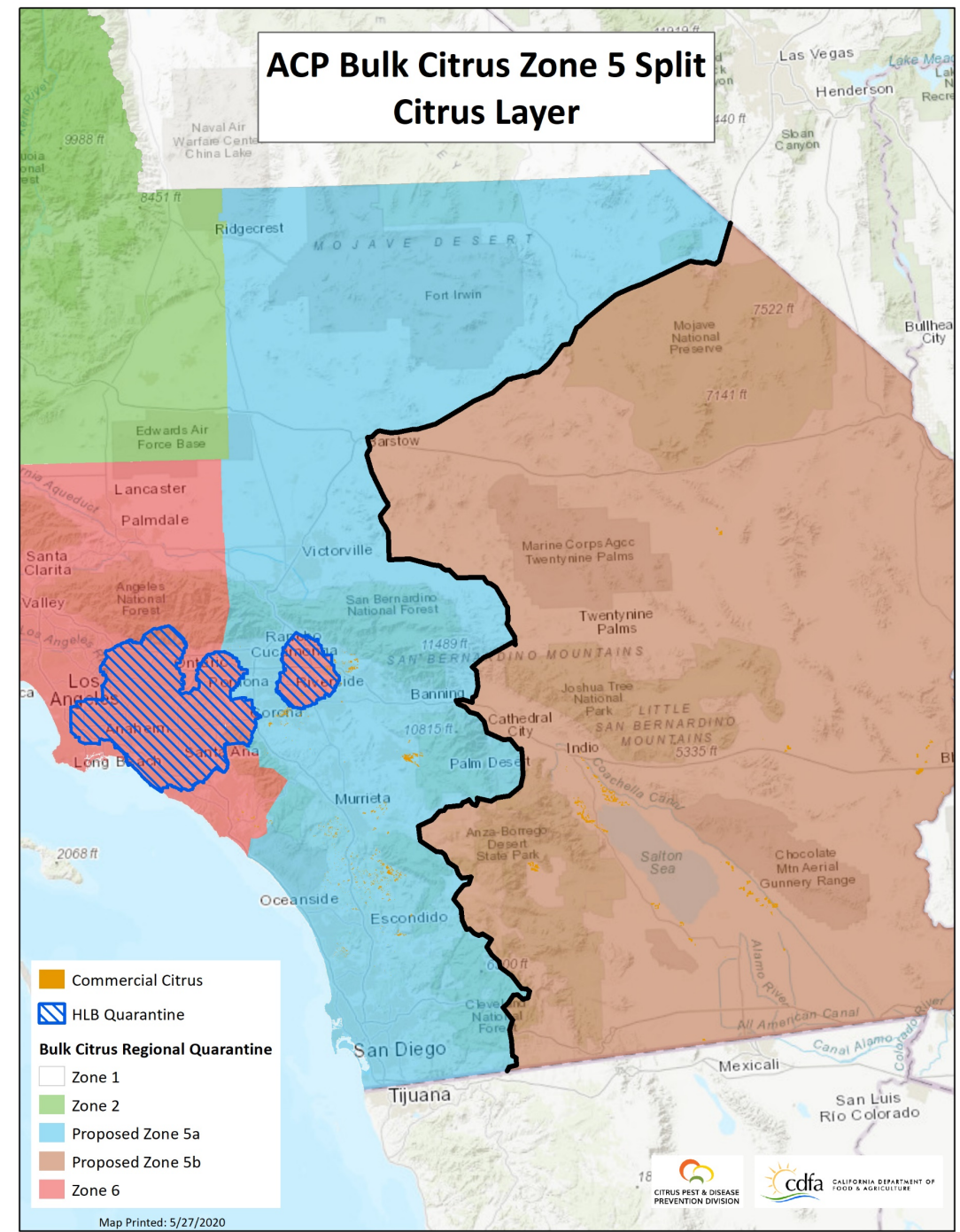
Fruit moving from Imperial County will need mitigation

Imperial growers potentially adversely impacted

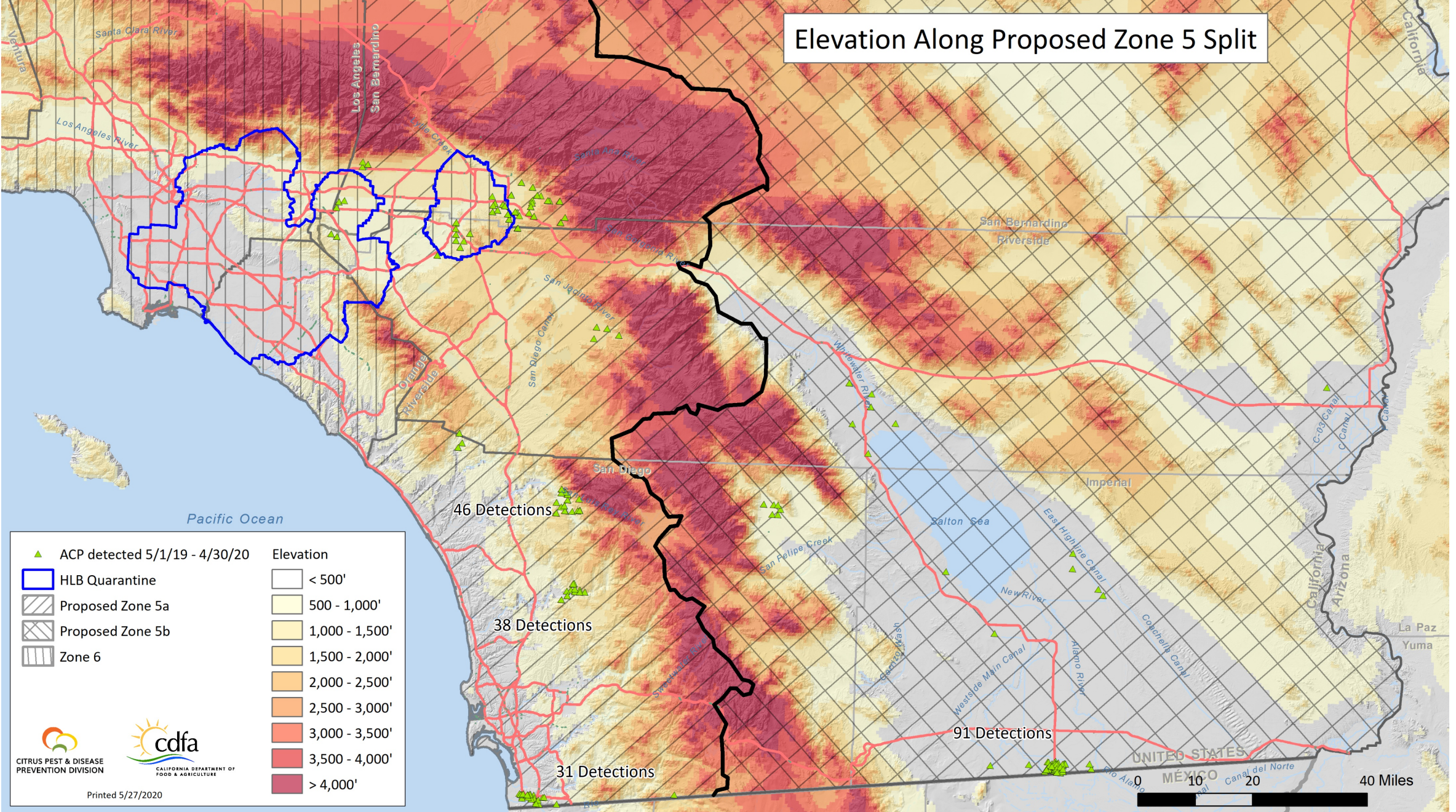
ACP Bulk Citrus Zone 5 Split ACP Detections



ACP Bulk Citrus Zone 5 Split Citrus Layer



Elevation Along Proposed Zone 5 Split



Discussion

Presented by: Keith Okasaki

Email contact: Keith.Okasaki@cdfa.ca.gov



Central District Operations Update

June 3, 2020



Central District Operations Update

- Surveys
 - 2020 Citrus Commodity

County	Acres Surveyed	Samples Submitted	Completed STR	Remaining STR
Fresno	1362*/2348	21*/24	14*/26	77
Kern	10653*/2834	23*/1	62*/13	0
Kings	10*	0	3*	0
Madera	0	0	0	19
Tulare	6026	0	8	149

*Includes work completed by PDEP in 2019

Central District Operations Update

- Risk-Based Survey Cycle 1-2020

County	STR Maps	Completed STR's	Possible Sites to Survey
Fresno	121	2	5255
Kern	84	6	2880
Kings	8	8	90
Madera	23		270
Merced	2	1	35
Monterey	1		25
San Benito	1		5
Santa Barbara	8	2	150
Tulare	120	97	4070
Ventura	48		2175

Central District Operations Update

- Trapping
 - Traps serviced by CDFA staff

County	Month	Deployed	Serviced
Fresno	May	780	509
Madera	May	517	517
San Luis Obispo	May	59	59





- County Trapping

County	Co. Ag Office Detection	Co. Ag Office Delim	CDFA Detection	CDFA Delim	Grove (serviced)	GWSS in Citrus	Area Wide	Total ACP Traps
Fresno	3039	76	781	0	1994	437	0	6327
Inyo	0	0	0	0	0	0	0	0
Kern	3889	145	0	0	2290	1047	0	7371
Kings	360	0	0	0	41	1	0	402
Madera	0	0	521	0	374	256	0	1151
Mariposa	0	0	0	0	0	0	0	0
Merced	619	0	0	0	0	0	0	619
Mono	0	0	0	0	0	0	0	0
Monterey	339	96	0	0	97	0	0	532
San Benito	410	0	0	0	0	0	0	410
San Luis Obispo	1592	271	0	59	220	0	0	2142
Santa Barbara	0	0	0	0	0	0	34	34
Tulare	3872	141	0	0	4812	3181	0	12006
Ventura	0	0	0	0	0	0	161	161
						Total Traps		31155



Central District Operations Update

- Grove Trapping

Grove Trapping				
April 2020				
County	Type	Traps Serviced	Traps with ACP PDRs	ACP Trapped
Fresno	CPDPC Grove	1994	0	0
Imperial	CPDPC AW	53	5	6
Kern	CPDPC Grove	2290	0	0
Kings	CPDPC Grove	41	0	0
Madera	CPDPC Grove	374	0	0
Monterey	CPDPC Grove	97	0	0
Orange				
Placer	CPDPC Grove	94	0	0
Riverside	CPDPC AW	117	7	25
San Benito				
San Bernardino	CPDPC AW	64	19	73
San Diego	CPDPC AW	40	23	118
San Luis Obispo	CPDPC Grove	220	0	0
Santa Barbara	CPDPC AW	34	2	5
Tulare	CPDPC Grove	4812	0	0
Ventura	CPDPC AW	161	26	285
		10,391	82	512



Central District Operations Update

- Treatment
 - Area Wide treatment- Ventura
 - Next round would start in August.
 - Beginning to prep for treatment
 - Ventura PMA's 15, 16, 18-22, 27, 29, 32, and 42 have reached 90% or more participation.
 - Santa Barbara PMA's 4, 5, 6, 7 and 12 are reported to be at 90% or more participation.



Northern California Treatment and Trapping Update

Citrus Pest and Disease Prevention Committee

Operations Subcommittee Meeting

June 3, 2020



CITRUS PEST & DISEASE
PREVENTION DIVISION
CALIFORNIA DEPARTMENT OF FOOD AND AGRICULTURE



CALIFORNIA DEPARTMENT OF
FOOD & AGRICULTURE



Northern California Treatment and Trapping Update

Treatment

- No active treatment areas.
- No new detections.

Trapping

- Delimitation - 423 traps in San Jose (end October 2020).
- Detection - removal of winter ACP traps.

Statewide GL Coordinator Update for the 6/3/20 OPs Meeting

Staffing

We are still waiting for the final decision on the GL positions how they might be affected by AB5, Gig Worker Law. CDFA legal staff is reviewing the law to see if we, as contractors, meet the exemptions of the law or if a change will be required in the contract or if the positions need to be State employees. Victoria has submitted the “exemption request” to fill the vacant and soon to be vacant positions, which is required by the governor under these extraordinary economic times. So, until the final decision and the approval of the exemption, SD GL will remain unfilled and the Statewide Coordinator contract, which ends June 30, neither will be advertised.

Fresno County Sylvie Robillard

No trap detections for Asian citrus psyllid in 2020. Sylvie continues with her normal liaison activities.

Northern Tulare County – Teri Blaser

As of this date, t

Southern Tulare County – Jessica Leslie

Currently, there have been no new ACP detections in Southern Tulare County to report. And while there have been no finds within the first year of her contract period, Jessica has spent her efforts sending out monthly updates to 336 contacts as well as keeping open communication with all of her current and newly appointed PMA Team Leaders. She has worked multiple events and meetings reaching out and educating industry workers and the public about ACP and HLB. She also continues to keep updated with the Tulare County Ag Commissioners Office on their tracking/working with abandoned and neglected citrus orchards. If there is anyone who would like to be added to her monthly update email list, please reach out to Jessica when you have the chance.

Kern County – Judy Zaninovich

Judy reports there has still not been any ACP detections in Kern County in 2020. This continues the trend which started early last year - the lowest amount of ACP detections since 2011.

Currently the Glassy-winged Sharpshooter Area-wide Management Program is working with organic growers in some areas of Kern County, such as Highway 65 and Edison, to apply

treatments in organic citrus blocks with higher populations of that pest. These treatments will also help in suppressing any un-detected ACP populations.

Judy continues to spend most of her time by: participating in important meetings, providing updates for some of these meetings, fielding grower and PCA phone calls, working with PMA Team Leaders to remain prepared to quickly suppress any future ACP detections in commercial citrus, and regularly emailing updates to approximately 400 growers, PCA's, and other interested parties.

San Luis Obispo County – Cressida Silvers

There are no new ACP finds in the county.

Santa Barbara County– Cressida Silvers

Ventura County Sandra Zwaal & Cressida Silvers

Ventura Co citrus growers have been applying the uncoordinated ACP treatments. The fall ACP areawide treatment schedule is expected to begin July. The Task Force will meet to discuss the upcoming schedule before distributing final treatment windows. Sandra and Cressida continue to update the grower file with data from CRB, CAC, PURs, Agrian, irrigated lands database.

San Bernardino County – Sandra Zwaal

The San Bernardino citrus growers are currently applying their Spring ACP areawide treatment. Peddlers are soliciting smaller growers for picks during the weekend, which may become a bigger issue since the County does not inspect during the weekends.

Riverside County – Alan Washburn

Coachella – Riverside County Citrus Pest Control District No. 2

The District's Winter ACP Area-Wide Treatment finished on Sat. Feb. 1st. Results for each zone are as follows: Zone 1 = 98%, Zone 2 = 66%, Zone 3 = 77%, and Zone 4 = 98%. Both zones 2 and 3 did not reach the 90% threshold, however out compliance for the entire valley was 92%, since zones 1 and 4 are much larger.

The District is still conducting their intensive red scale eradication sprays on about 6% of the total acreage. This is taking up the bulk of the District's time, but the sprays are winding down. These sprays will continue through mid-June.

On June 15th, the District will begin its 12-week red scale trapping program. This is a convenient time to focus on red scale as the ACP numbers fall to virtually zero during our hot dry summer.

Lastly the District will continue our intensive tree removal program of citrus trees that are in close proximity to commercial groves and are difficult and costly to treat. To date the District has removed 3,412 citrus trees at 48 different locations. A couple of locations are tentatively scheduled to have trees removed shortly.

Riverside County Pest Control District No. 3 – Hemet

Riverside County Pest Control District No. 3 – Hemet

Hemet is currently in its three-week non-coordinated area-wide treatment window. They had 99% participation in the winter. Hemet should have the same involvement as winter but unfortunately not within three weeks as standard. Due to the bulk citrus movement regulations, a lot of the growers must spray-and-move their fruit to the packing house. The board approved these treatments as an ACP treatment for compliance purposes if they were two weeks before or two weeks after the treatment window. Allowing growers to do this will affect percentages, but we still see Hemet reaching 90 percent.

The bio-control team has included hydrogels with boric acid into their project. They are hoping these will be easier than the ant bait stations.

Riverside City-Arlington Area

Citrus State Park and some other surrounding groves have recently been treated for both thrip and ACP. Along with spray-and-move treatments, there has been some acreage getting treated. There wasn't a lot of thrips pressure, as usual, so many groves still haven't been sprayed since winter. Recently, ACP populations have increased.

Imperial County – Curtis Pate

Curtis reports that ACP detection dogs have had good results locating the pest in residential areas including rural residential properties. Commercial finds/trap hits remain very low with 1-2 per trap in a handful of locations. Ground truthing these traps has failed to indicate active populations.

San Diego County – Vacant

Thanks to Enrico Ferro, the PCD and Jason Schwartz and Jasmin Lopez, SD CAC staff for helping to keep the information flowing to SD growers. They shared the new Bulk Citrus Movement changes, so that growers were able to adjust to Spray and Harvest as required as of 4/13/20. Jason reports that the CAC

Enrico reports t

Neglected/Abandoned Groves

No changes reported by the CACs. The GLs continue to work with the growers and CAC staff to address any suspected abandoned groves.

County	BOS Sup (Y/N)	Co Coun Sup (Y/N)	#Groves Report'd	#Groves Confrmd N/A	Total Acs (100 trees/ac) Confrmd	#owners contactd	#1st Letrs	#2nd Letrs	#3rd Letrs	#Heard	Hears won	#Hears lost	Groves Remvd	Total Acs Remvd	#Groves Rem'd	Acs Rem'd	#Groves Pndg	Total Acs Pndg			
Fresno																					
Kern	Y	Y	3	1	60.36	1											1	60.36			
Madera																					
SLO	Y	Y																			
Tulare	Y	Y	88	88	1148	88	44				1	1	0	66	908	9	79	13	161		
Subtotal			91	89	1208.36	89	44				1	1	0	66	908	9	79	14	221.36		
Imperial	Y	Y	1	1	6	1								1	6						
LA																					
OC																					
Coachella			48	48	34.12	48							48	34.12					Coachella is a PCD in Riverside		
Riverside	Y	Y	92		264.81	43	43	43	11				22				35				
San Brdo																					
SD	Y	Y	108	61	1693	61	39	28	24				37	774		71	919				
Sta Barb																					
Ventura	Y	Y																			
Subotal			108	110	1997.93	153	82	71	35	0	0	0	108	814.1	0	71	954	0			
Total			340	199	3206.29	242	126	71	35	1	1	0	174	1722	9	150	968	221.36			

Data Department Update

Rick Dunn

CRB Director of Data and Information Management

6/3/2020

Data Management Department Activity,

June 3, 2020

Richard Dunn - Data, Information & Management Director

UCKAC GIS Facility

- Robert Johnson continues to assist with Statewide Citrus Layer maintenance and keeping the UCANR interactive web map updated with ACP, Biocontrol, CLas+ACP, and HLB detection data. <http://ucanr.edu/acpmap>

CRB Data Department

- Director is supporting Psyllid Management Area group activities and regional ACP / HLB Task Force groups in various counties with mapping support services. Revising the Statewide Commercial Citrus Layer as information is received. Santa Barbara county completed. Ventura county is in progress. Researching modern handheld hardware and software options to replace the NOMAD data collection system.
- GIS Analyst Nancy Ying is conducting routine data scrubbing, quality control, and map production tasks.
- DATOC Coordinator Holly Deniston-Sheets is updating content on both the public and restricted DATOC websites as well as facilitating the expert panel as they address requests for analysis.
- Staff continue to support the CPDPP commercial grove trapping / sampling program. Supplying trappers with individualized GIS Trapsite and Samplesite layers updated weekly for use on their NOMADs. We produce and distribute ACP / HLB detection overview maps, PDR 800M maps, Biocontrol Workgroup activity maps, CPDPP Trapping progress maps, CPDPP Sampling progress maps, Trapping catch per day maps, Sampling close-up maps, and ArcGIS Online detection / collection heat maps, as well as monthly summary data, ACP situation data, and statistical reports.