





HLB DETECTION, DELIMITATION, AND TREE REMOVAL UPDATES

SOUTHERN DISTRICT
JUNE 9, 2021





HLB FINDS IN COLTON AND MONTCLAIR

- DETECTED FIVE (5) POSITIVE TREES IN COLTON AND TWO (2) IN MONTCLAIR
 - SAME AREA AS ORIGINAL FIND SITES
 - RECENTLY CONDUCTED RE-SURVEY AND RETREATMENTS IN THE AREA
 - ALL TREES HAVE BEEN REMOVED IN COLTON
 - PENDING TWO TREES IN MONTCLAIR
- 

HLB DELIMITATION SURVEY

| Areas | Total Properties | Properties Surveyed | No Host Properties | Refusals/No Contact | Completion |
|------------------------|------------------|---------------------|--------------------|---------------------|------------|
| Colton 1 | 153 | 141 | 45 | 3/8 | 100% |
| Pico Rivera 37 & 38 | 125 | 111 | 39 | 5/9 | 100% |
| Montclair 1-5 | 555 | 514 | 176 | 16/21 | 97% |
| Whittier 37 & 38 | 131 | 120 | 69 | 2/7 | 100% |
| Paramount 3 & 4 | 200 | 146 | 111 | 0/3 | 75% |
| Ontario 1 | 205 | 196 | 105 | 2/2 | 98% |
| Huntington Beach 3 & 4 | 514 | 130 | 61 | 7/19 | 25% |

QUADRANT SURVEY – 2021

(FIND SITE, ADJACENT, INCONCLUSIVE)

| COUNTY | Jan | Feb | Mar | April | May | June | July | Aug | Sept | Oct | Nov | Dec |
|----------------|------------|------------|------------|------------|------------|------|------|-----|------|-----|-----|-----|
| Los Angeles | 22 | 43 | 59 | 203 | 32 | | | | | | | |
| Orange | 285 | 124 | 27 | 266 | 365 | | | | | | | |
| Riverside | 25 | 70 | 123 | 361 | 0 | | | | | | | |
| San Bernardino | 0 | 0 | 0 | 25 | 379 | | | | | | | |
| San Diego | 52 | 0 | 0 | 0 | 0 | | | | | | | |
| Imperial | 0 | 0 | 118 | 0 | 0 | | | | | | | |
| Total | 384 | 237 | 209 | 855 | 776 | | | | | | | |

HLB BORDER BUFFER RISK SURVEY

| County | Cycle 3-2021 | Number of Sq. miles | | Number of Sites Surveyed | Number of Sites | | Completed Sq. miles |
|---|------------------------------|---------------------|-----------|--------------------------|-----------------|---------------|---------------------|
| | | Proposed | Completed | | Ento. Samples | Plant Samples | |
| San Diego (Tecate, Portero, San Ysidro, and San Diego) | Spring (March 23-June 21) | 26 | 14 | 155 | 40 | 51 | 54% |
| Imperial (Calexico, Holtville, and Winterhaven) | Winter (March 23-June 21) | 36 | 30 | 202 | 0 | 185 | 83% |

CITRUS COMMODITY SURVEY

(SURVEY 20% CITRUS ACREAGE EVERY YEAR FOR CITRUS PESTS)

| County | Total Area (Acres) | Surveyed Area (Acres) | Completion % |
|----------------|--------------------|-----------------------|--------------|
| Imperial | 1,573.63 | 1,210.25 | 77% |
| San Bernardino | 655.78 | 422.98 | 65% |
| Riverside | 3,388.71 | 2,087.2 | 62% |
| San Diego | 2,088.31 | 418.0 | 20% |

CRB TISSUE AND SEASONALITY SAMPLING

(YOUNG/OLD LEAVES, PEDUNCLE, BARK, AND ROOTS) MARCH 20,2021- JUNE 20, 2021

| County | Non-Positive sites (Inconclusive, ACP, Dog alert) | HLB Positive Sites |
|----------------|--|--------------------|
| Orange | 9 | 31 |
| Los Angeles | 0 | 5 |
| Riverside | 1 | 3 |
| San Bernardino | 2 | 3 |
| TOTAL | 12 | 42 |

HLB POSITIVE TREES- MAY

| | HLB Positive Trees | Trees Removed | Cumulative Pending |
|----------------|--------------------|---------------|--------------------|
| Los Angeles | 2 | 2 | 2 |
| Orange | 23 | 22 | 14 |
| San Bernardino | 7 | 5 | 2 |
| Riverside | 0 | 2 | 0 |
| TOTAL | 32 | 31 | 18 |



California Department of Food & Agriculture Plant Pest Diagnostics Center HLB Testing Program 2021

Monthly Lab Totals – Fig. 1

HLB Yearly Totals – Fig. 2

2021 Plant and ACP Samples by County – Fig. 3

Tally of Positive Detections by County and City – Tables 1-3

Tally of Positive Detections by City per Year – Tables 4

Map of HLB Positive Trees – Fig. 4

If you have any questions, please call or email me at 916-738-6710 lucita.kumagai@cdfa.ca.gov.

Fig 1. 2021 Plant and ACP sample totals per month.

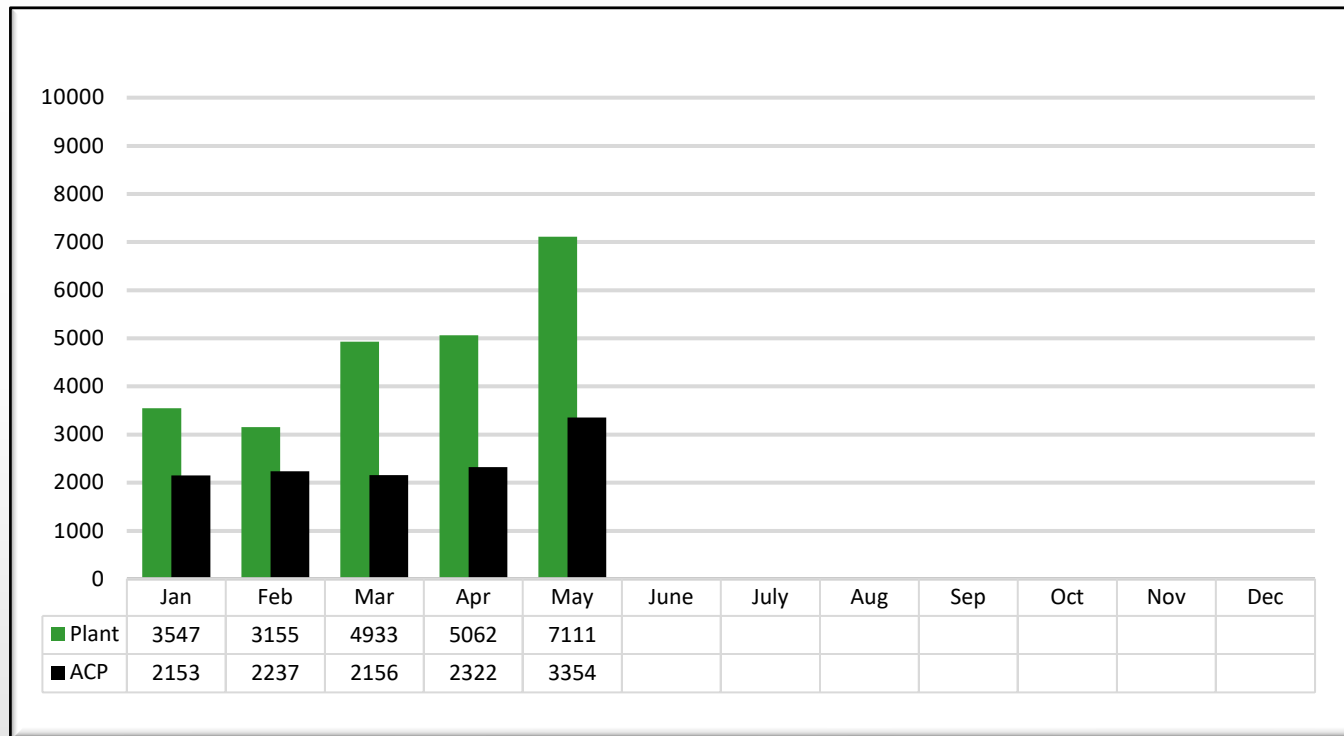
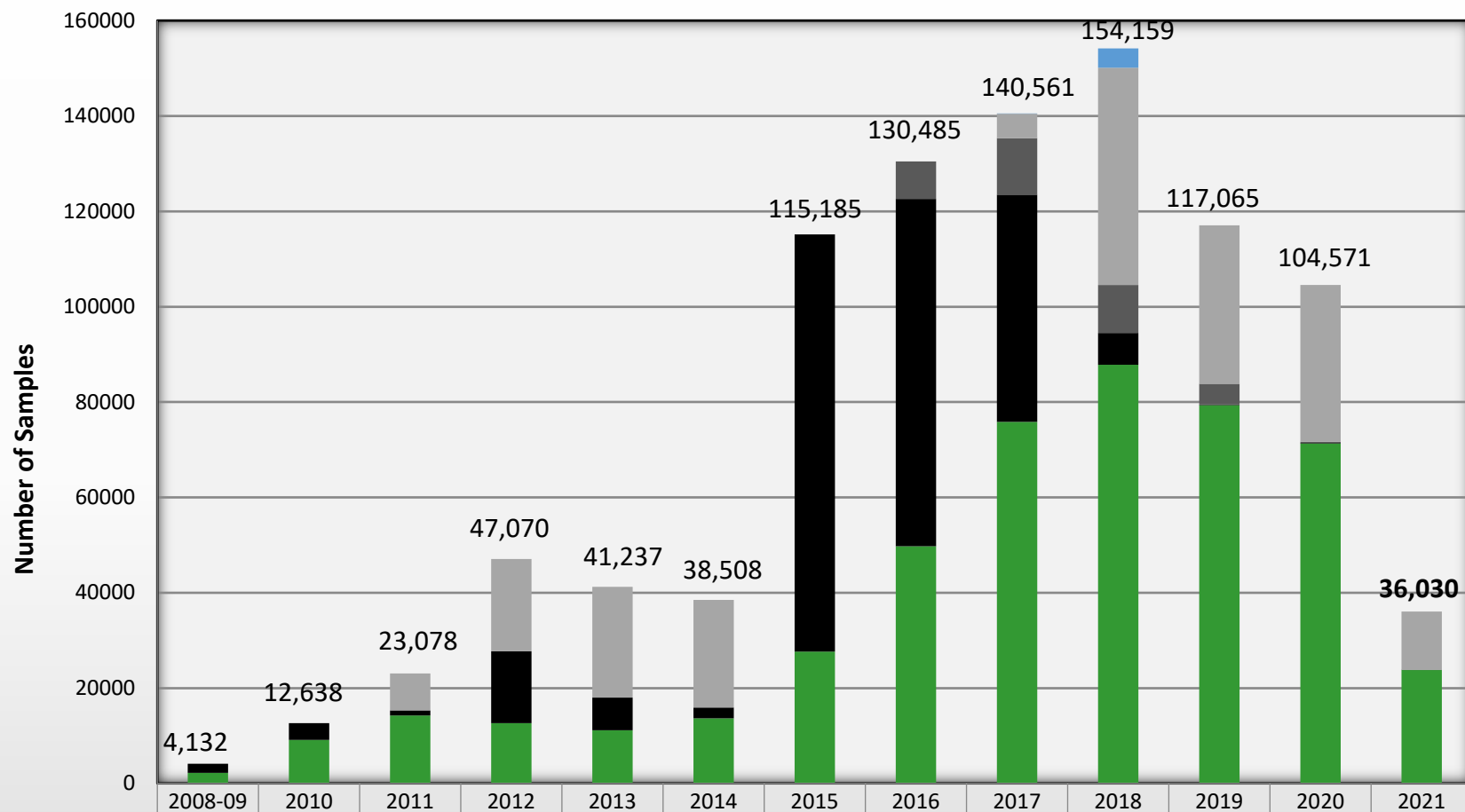


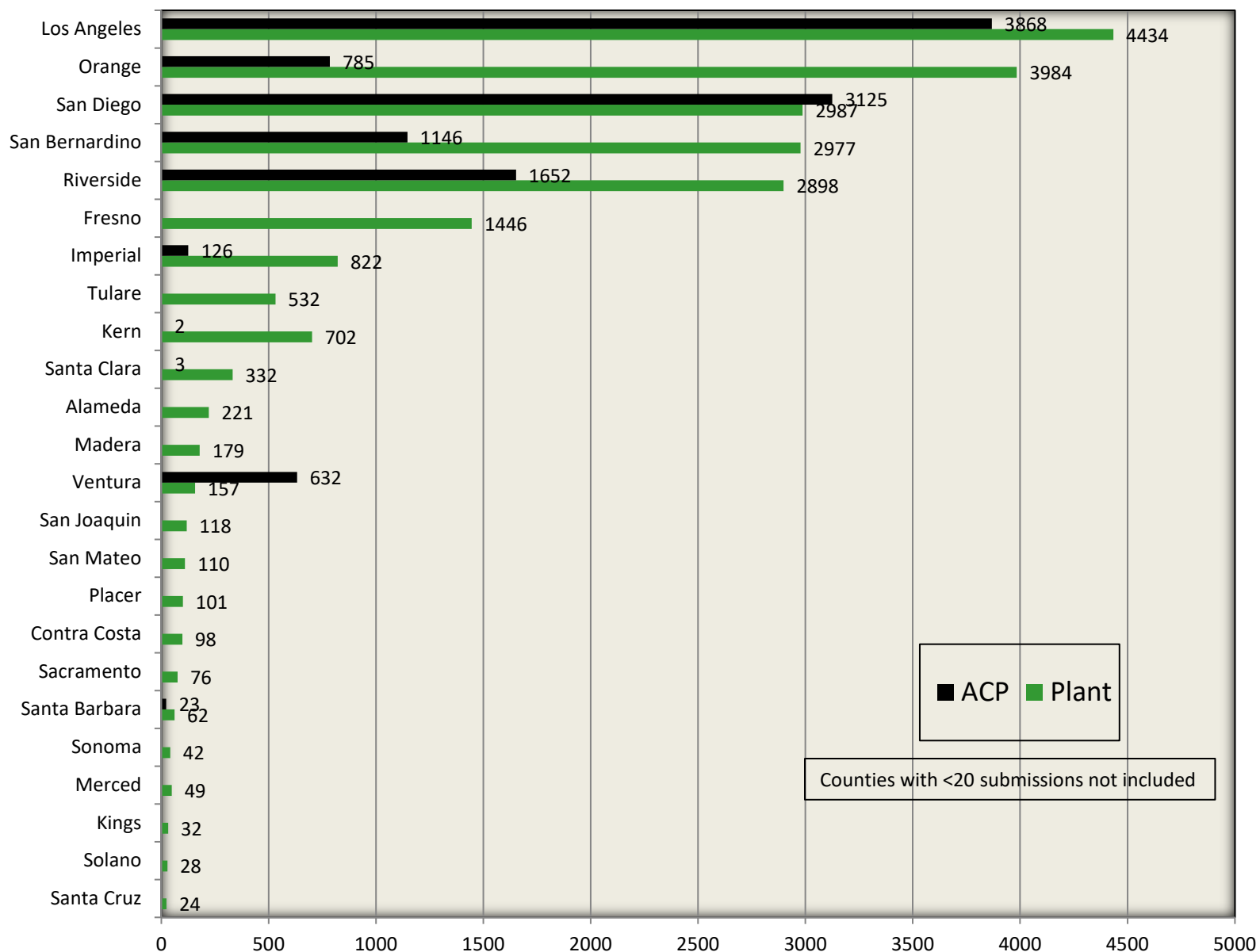
Fig 2. Number of samples submitted for HLB testing per year from 2008 to 2021.



| | | | | | | | | | | | | | |
|----------------|------|------|-------|-------|-------|-------|-------|-------|-------|-------|-------|-------|-------|
| ACP CPDP | | | | | | | | | 94 | 4020 | 0 | 0 | 0 |
| ACP CRB | | | 7740 | 19380 | 23222 | 22568 | 0 | 0 | 5085 | 45550 | 33247 | 32920 | 12211 |
| ACP Univ of AZ | | | | | | | | 7881 | 11896 | 10079 | 4310 | 205 | 0 |
| ACP CDFA | 1923 | 3527 | 1105 | 15032 | 6872 | 2300 | 87501 | 72832 | 47619 | 6698 | 133 | 130 | 11 |
| Plant CDFA | 2209 | 9111 | 14233 | 12658 | 11143 | 13640 | 27684 | 49772 | 75867 | 87812 | 79375 | 71316 | 23808 |

Combined total of plant and ACP samples tested from 2008 – 2021 is 964,719.

Fig 3. 2021 Plant and ACP Samples Submitted by County



Tables 1-3. Tally of positive detections by county and city as of 5/31/2021

| County | Sites | Trees | ACP |
|----------------|-------|-------|------|
| Orange | 72% | 75% | 67% |
| LA | 25% | 22% | 26% |
| Riverside | 3% | 2% | 4% |
| San Bernardino | 1% | 1% | 3% |
| San Diego | 0% | 0% | 0% |
| Total | 100% | 100% | 100% |

| Sample type | Trees | | ACP | |
|-------------|-------|------|-----|------|
| RS | 101 | 4% | 164 | 49% |
| HLBR | 2252 | 96% | 174 | 51% |
| Total | 2353 | 100% | 338 | 100% |

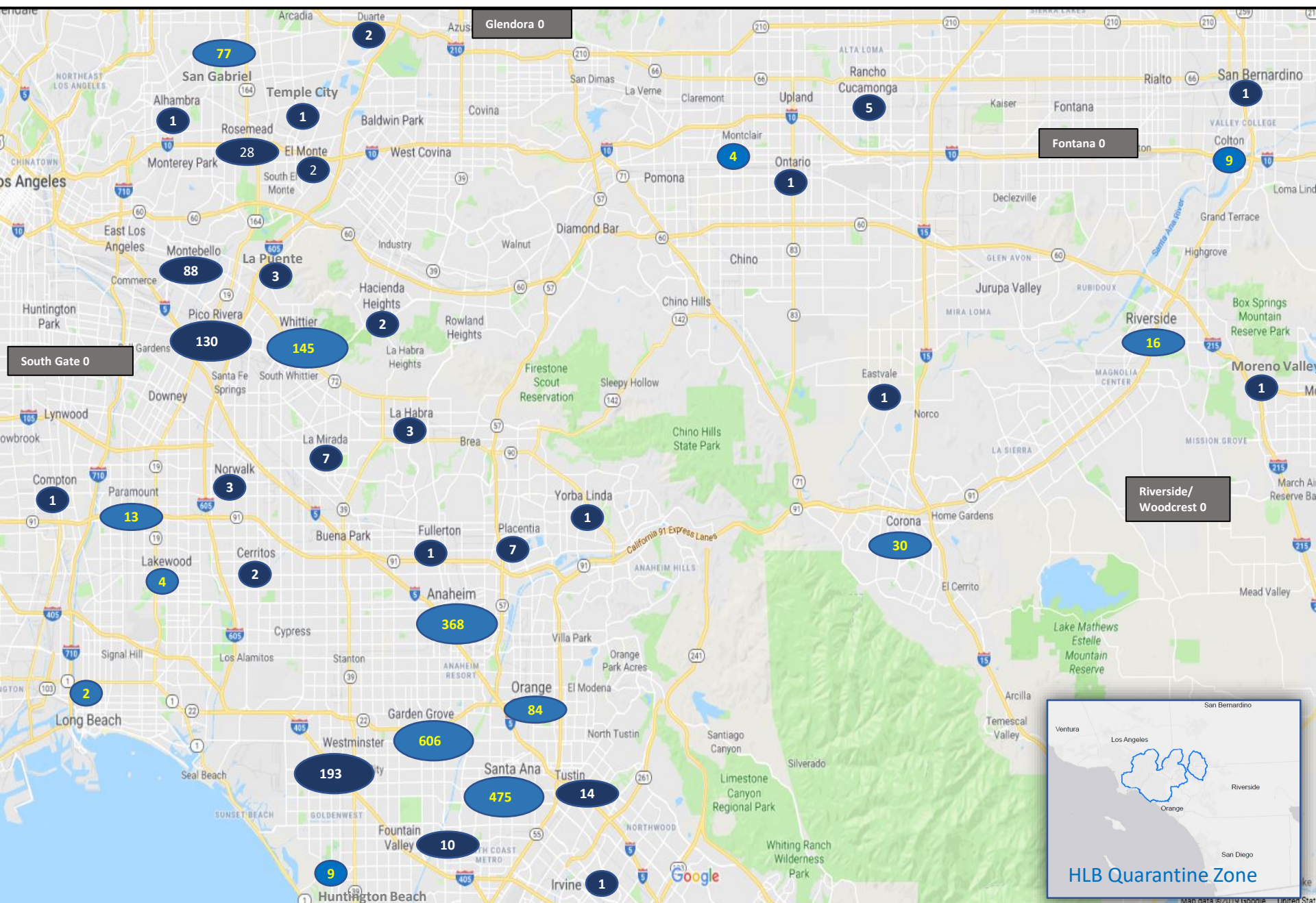
| Positives | # Sites | # Trees | # ACP |
|------------------------------|---------|---------|-------|
| Orange County | | | |
| Garden Grove | 394 | 606 | 57 |
| Santa Ana | 343 | 475 | 45 |
| Anaheim | 255 | 368 | 89 |
| Westminster | 127 | 193 | 11 |
| Orange | 66 | 84 | 10 |
| Tustin | 11 | 14 | 3 |
| Fountain Valley | 4 | 10 | 0 |
| Huntington Beach | 9 | 9 | 0 |
| Placentia | 8 | 7 | 2 |
| La Habra | 2 | 3 | 1 |
| Fullerton | 3 | 1 | 3 |
| Yorba Linda | 2 | 1 | 2 |
| Irvine | 3 | 1 | 2 |
| Total | 1227 | 1772 | 225 |
| Los Angeles County | | | |
| Whittier | 118 | 145 | 19 |
| Pico Rivera | 107 | 130 | 36 |
| Montebello | 62 | 88 | 1 |
| San Gabriel | 61 | 77 | 6 |
| Rosemead | 23 | 28 | 4 |
| Paramount | 12 | 13 | 3 |
| La Mirada | 8 | 7 | 4 |
| La Puente | 4 | 3 | 1 |
| Norwalk | 5 | 3 | 3 |
| Cerritos | 3 | 2 | 2 |
| Hacienda Heights | 2 | 2 | 1 |
| Lakewood | 3 | 4 | 0 |
| Duarte | 1 | 2 | 1 |
| El Monte | 3 | 2 | 1 |
| Alhambra | 1 | 1 | 0 |
| Temple City | 1 | 1 | 1 |
| Compton | 1 | 1 | 0 |
| Glendora | 1 | 0 | 1 |
| South Gate | 1 | 0 | 1 |
| Long Beach | 4 | 2 | 2 |
| Los Angeles | 1 | 0 | 1 |
| Total | 422 | 511 | 88 |
| Riverside County | | | |
| Corona | 25 | 30 | 10 |
| Riverside | 17 | 16 | 4 |
| Eastvale | 1 | 1 | 0 |
| Moreno Valley | 1 | 1 | 0 |
| Total | 44 | 48 | 14 |
| San Bernardino County | | | |
| Rancho Cucamonga | 2 | 5 | 2 |
| Montclair | 6 | 6 | 0 |
| Colton | 4 | 9 | 3 |
| San Bernardino | 2 | 1 | 1 |
| Ontario | 2 | 1 | 1 |
| Fontana | 1 | 0 | 3 |
| Total | 17 | 22 | 10 |
| San Diego | | | |
| Fallbrook | 1 | 0 | 1 |
| Total | 1 | 0 | 1 |
| Grand Total | 1711 | 2353 | 338 |

Table 4. Annual tally of positive trees per city as of 5/31/2021

| COUNTIES |
|----------------|
| Orange |
| Los Angeles |
| Riverside |
| San Bernardino |
| San Diego |

| Cities | 2012 | 2015 | 2016 | 2017 | 2018 | 2019 | 2020 | 2021 | Total |
|------------------|------|------|------|------|------|------|------|------|-------|
| Anaheim | | | | 132 | 109 | 90 | 21 | 16 | 368 |
| Garden Grove | | | | 13 | 348 | 115 | 116 | 14 | 606 |
| La Habra | | | | 1 | 0 | 2 | 0 | 0 | 3 |
| Fullerton | | | | 1 | 0 | 0 | 0 | 0 | 1 |
| Santa Ana | | | | | 44 | 168 | 217 | 46 | 475 |
| Westminster | | | | | 15 | 175 | 3 | 0 | 193 |
| Yorba Linda | | | | | 1 | 0 | 0 | 0 | 1 |
| Orange | | | | | 31 | 14 | 36 | 3 | 84 |
| Tustin | | | | | 5 | 8 | 1 | 0 | 14 |
| Huntington Beach | | | | | | 6 | 2 | 1 | 9 |
| Placentia | | | | | | 7 | 0 | 0 | 7 |
| Fountain Valley | | | | | | | 10 | 0 | 10 |
| Irvine | | | | | | | 1 | 0 | 1 |
| Hacienda Heights | 1 | 0 | 1 | 0 | 0 | 0 | 0 | 0 | 2 |
| San Gabriel | | 10 | 17 | 33 | 10 | 6 | 0 | 1 | 77 |
| Cerritos | | | 1 | 1 | 0 | 0 | 0 | 0 | 2 |
| Pico Rivera | | | | 67 | 35 | 18 | 10 | 0 | 130 |
| Whittier | | | | 18 | 80 | 23 | 21 | 3 | 145 |
| La Puente | | | | | 0 | 3 | 0 | 0 | 3 |
| Lakewood | | | | | 1 | 1 | 0 | 2 | 4 |
| Norwalk | | | | | 1 | 0 | 2 | 0 | 3 |
| Rosemead | | | | | 17 | 11 | 0 | 0 | 28 |
| Duarte | | | | | 2 | 0 | 0 | 0 | 2 |
| Temple City | | | | | | 1 | 0 | 0 | 1 |
| Montebello | | | | | | 84 | 4 | 0 | 88 |
| El Monte | | | | | | 1 | 1 | 0 | 2 |
| Compton | | | | | | 1 | 0 | 0 | 1 |
| Alhambra | | | | | | 1 | 0 | 0 | 1 |
| La Mirada | | | | | | | 7 | 0 | 7 |
| Paramount | | | | | | | 11 | 2 | 13 |
| Long Beach | | | | | | | | 2 | 2 |
| Glendora | | | | | | | | | 0 |
| South Gate | | | | | | | | | 0 |
| Riverside | | | | 3 | 0 | 4 | 6 | 3 | 16 |
| Corona | | | | | | 15 | 4 | 11 | 30 |
| Eastvale | | | | | | | 1 | 0 | 1 |
| Moreno Valley | | | | | | | 1 | 0 | 1 |
| Montclair | | | | | | 2 | 2 | 2 | 6 |
| San Bernardino | | | | | | | 1 | 0 | 1 |
| Ontario | | | | | | | 1 | 0 | 1 |
| Colton | | | | | | | 4 | 5 | 9 |
| Rancho Cucamonga | | | | | | | 5 | 0 | 5 |
| Fontana | | | | | | | | | 0 |
| Fallbrook | | | | | | | | | 0 |
| Total | 1 | 10 | 19 | 269 | 699 | 756 | 488 | 111 | 2353 |

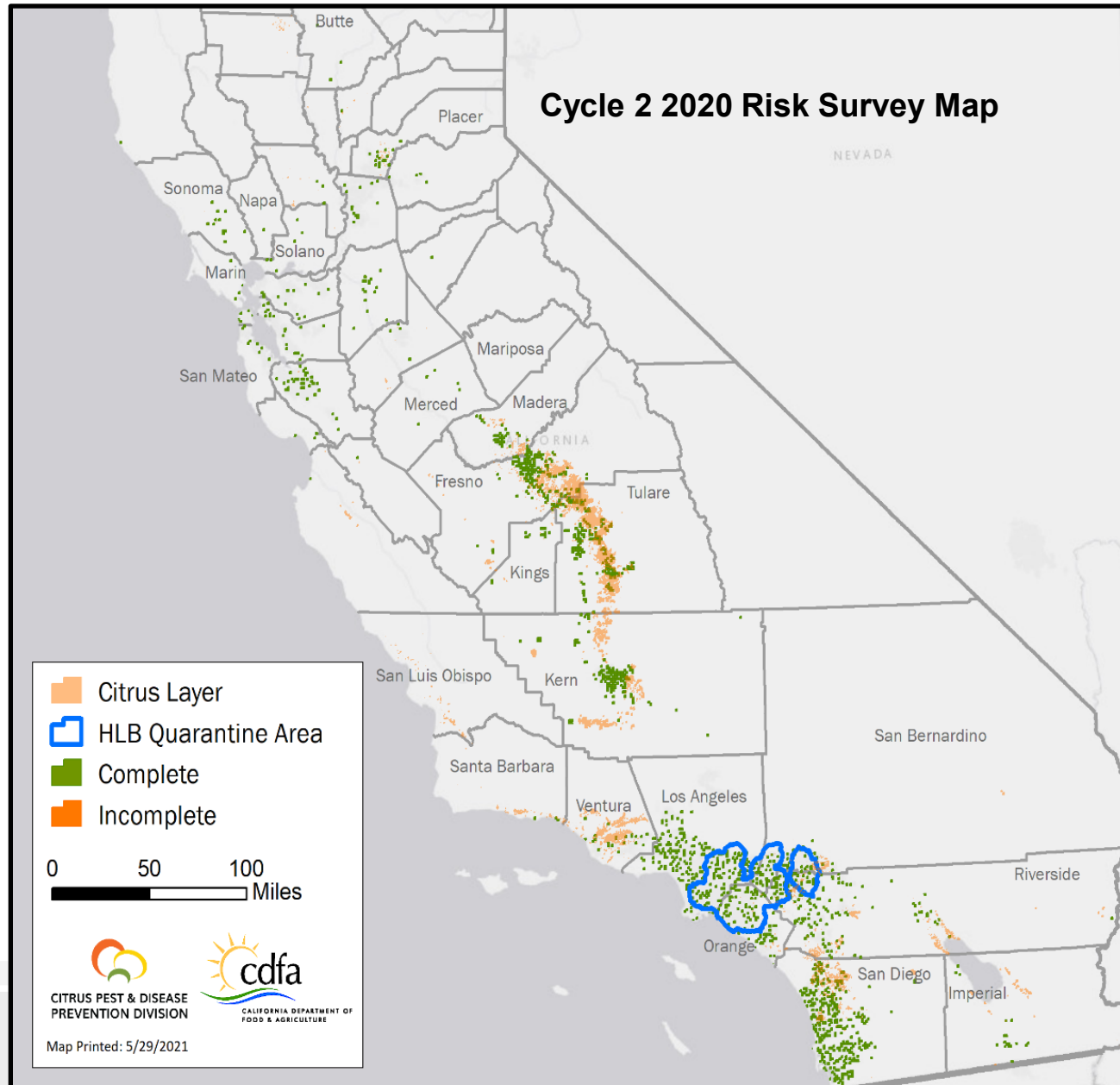
Fig 4. HLB+ Trees. As of 5/31/2021, a total of **2,353 HLB+** trees have been detected and removed: **511** from Los Angeles Co, **1,772** from Orange Co, **48** from Riverside, and **22** from San Bernardino Co. Only CLAs+ ACP was detected in Glendora, South Gate, Fontana, Fallbrook, and Riverside/Woodcrest. The areas with yellow highlighted numbers are where CLAs detections have occurred this year (2021).





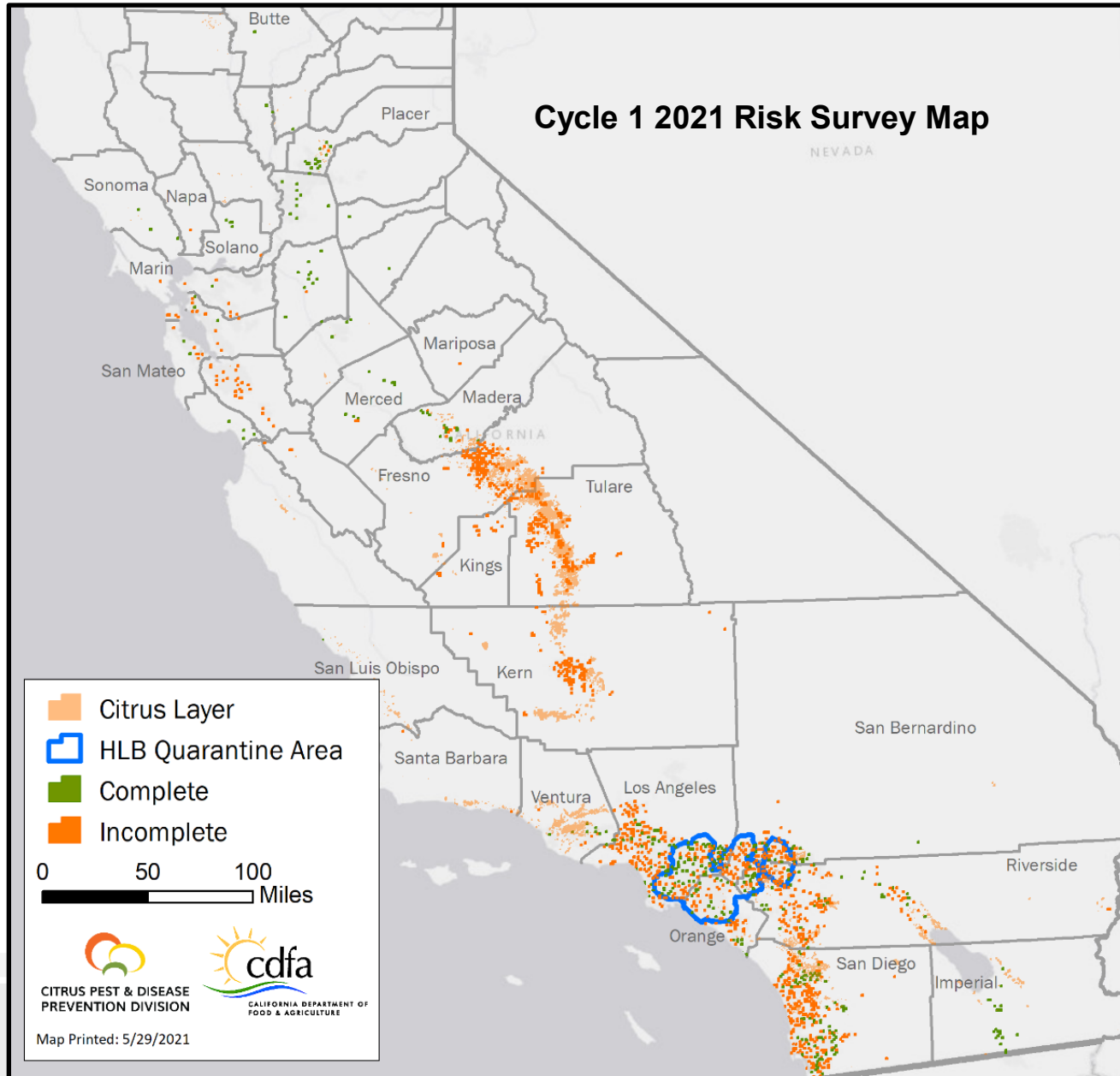
Risk Survey Update
Operations Subcommittee Meeting
June 9, 2021

Risk Survey Cycle 2 (2020 Status)







- 100% Complete
- August 2020 – May 2021
- 36 counties
- 49,000 Properties Surveyed
- 10,800 ACP Samples
- 12,500 Plant Samples
- *CLas+* ACPs Detected in Fallbrook and Rancho Cucamonga

Risk Survey Cycle 1 (2021 Status)



- Began Mid-March
- 23% Complete
- Survey Complete in 15 of 36 Allocated Counties

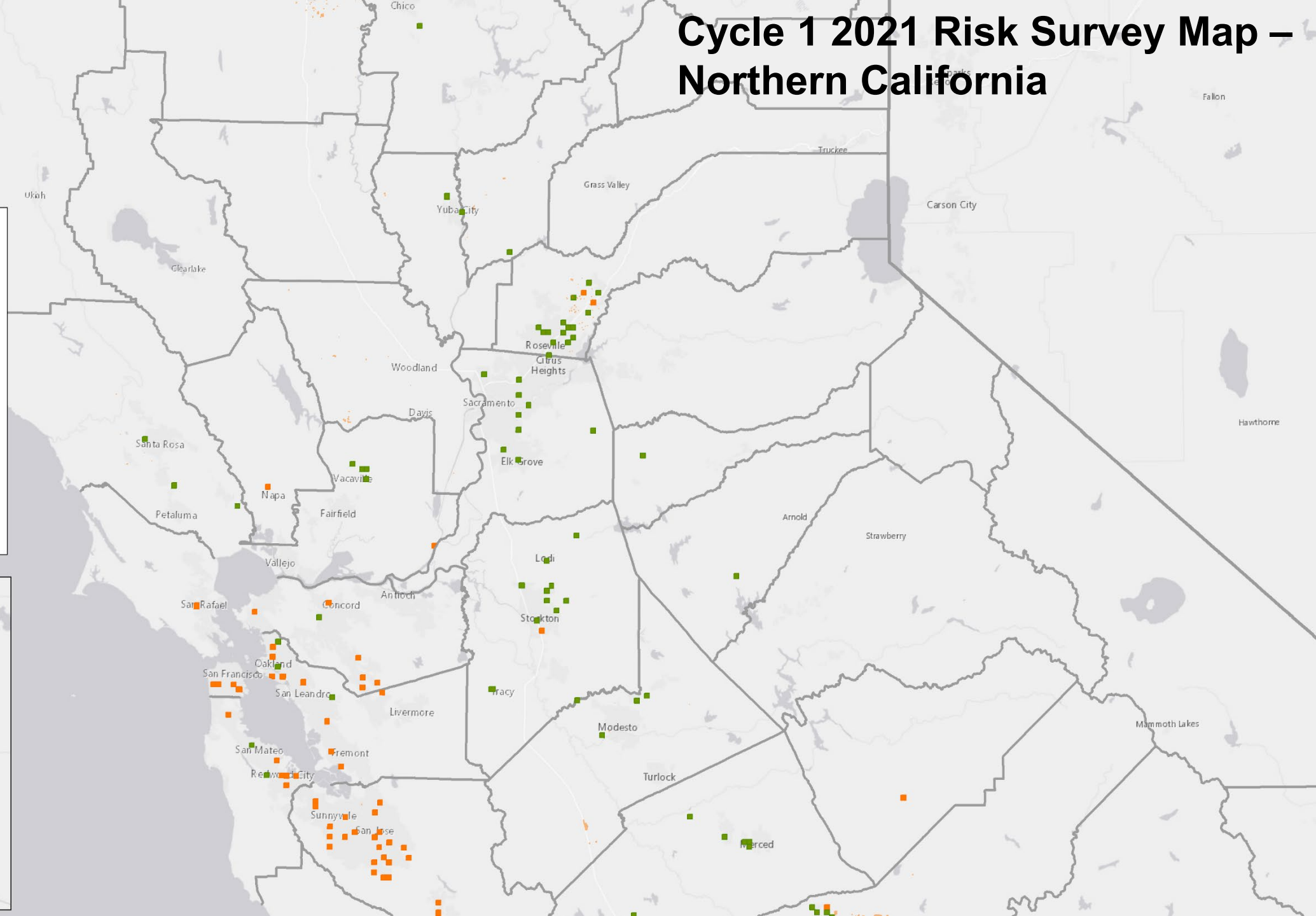
Cycle 1 2021 Risk Survey Map – Northern California

-  Citrus Layer
-  HLB Quarantine Area
-  Complete
-  Incomplete





0 20 40
Miles



Map Printed: 5/29/2021



Cycle 1 2021 Risk Survey Map – Central California

-  Citrus Layer
-  HLB Quarantine Area
-  Complete
-  Incomplete

0 20 40
Miles

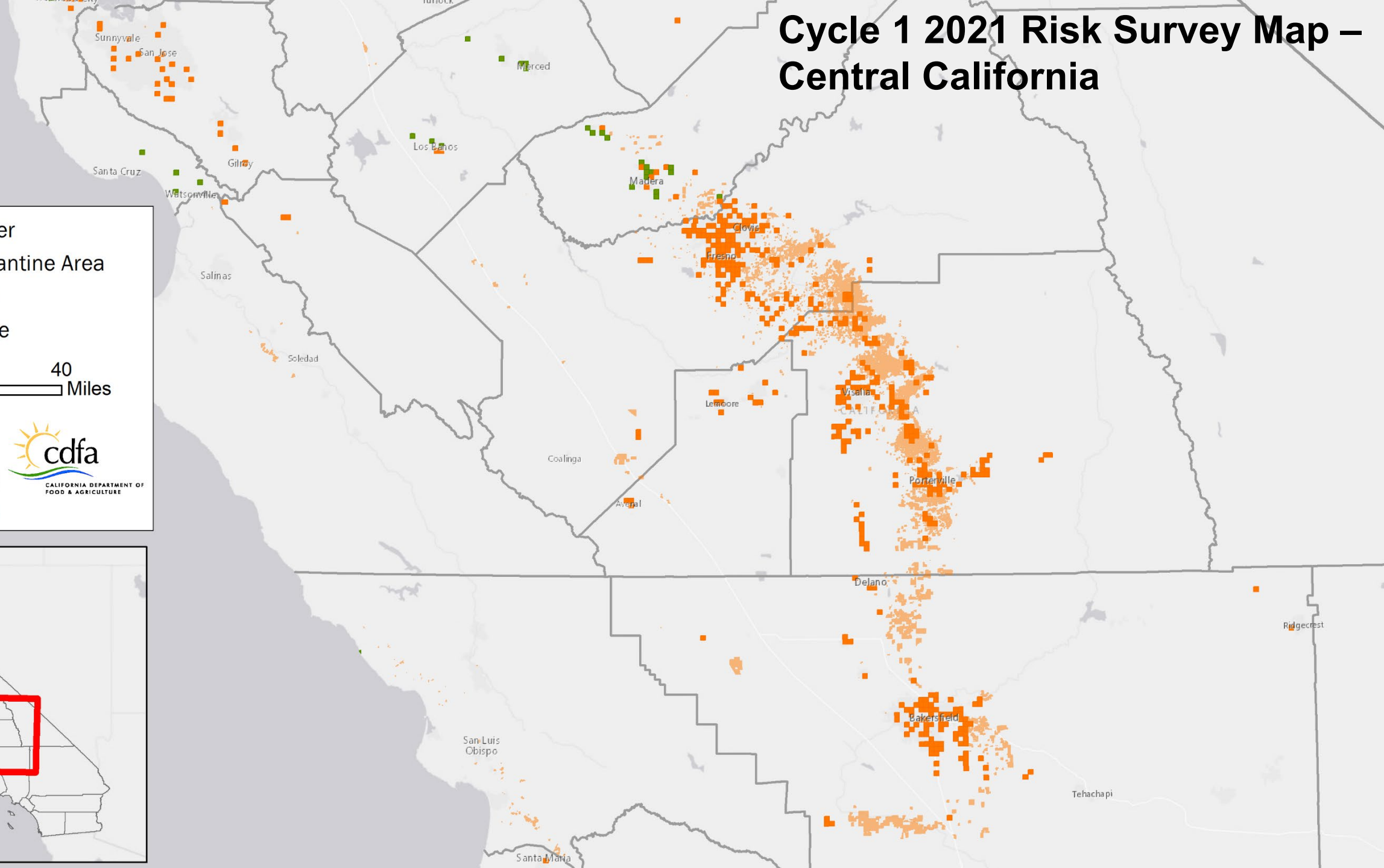


CITRUS PEST & DISEASE
PREVENTION DIVISION

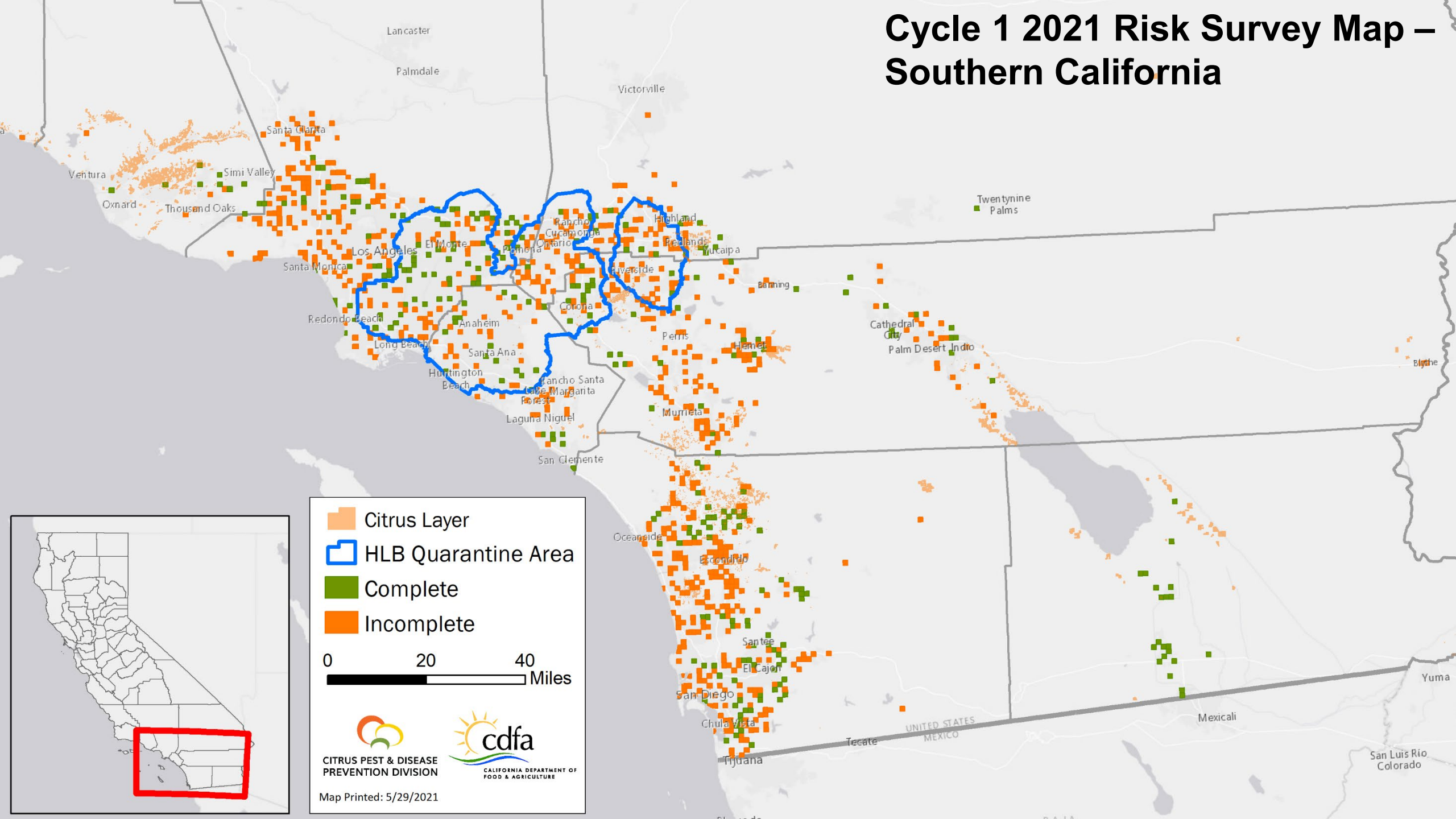


CALIFORNIA DEPARTMENT OF
FOOD & AGRICULTURE

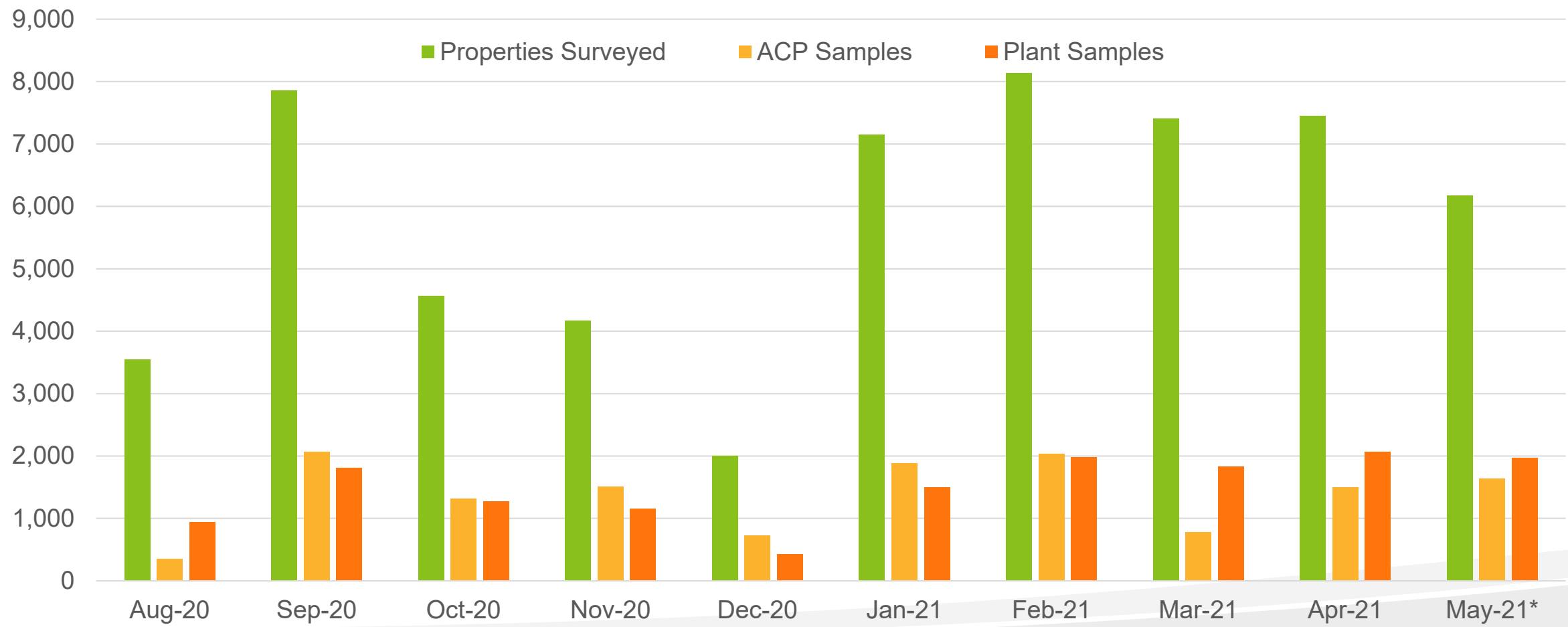
Map Printed: 5/29/2021



Cycle 1 2021 Risk Survey Map – Southern California



Statewide Risk Survey Trends (Cycle 2 of 2020 and Cycle 1 of 2021)



*Data current as of 05/28/2021

County Regulatory Activity
July 2020 - April 2021

| County | FY 2020 21 Budget Amount | Percent Expended | CAs Issued | Grower Inspections | Transporter Inspections | Packer/Processor Inspections | Fruit Seller Inspections | NOVs | NOPAs |
|----------------------|-----------------------------|---------------------|------------|-----------------------|----------------------------|---------------------------------|-----------------------------|------------|-----------|
| Fresno | \$72,795.09 | 85% | 52 | 2 | 345 | 2 | 2 | 19 | 0 |
| Imperial | \$51,394.90 | 94% | 0 | 26 | 24 | 90 | 0 | 0 | 0 |
| Kern | \$85,000.00 | 45% | 22 | 174 | 1,012 | 11 | 0 | 10 | 0 |
| Kings (*1) | \$25,743.28 | 39% | 0 | 0 | 0 | 69 | 0 | 0 | 0 |
| Los Angeles (*1) | \$264,002.73 | 70% | 24 | 0 | 0 | 309 | 37 | 0 | 0 |
| Monterey (*1) | \$11,765.25 | 74% | 1 | 78 | 0 | 0 | 0 | 0 | 0 |
| Orange (*4) | \$84,687.75 | 24% | 0 | 28 | 0 | 0 | 0 | 0 | 0 |
| Riverside (*2) | \$677,263.30 | 84% | 29 | 364 | 1,484 | 14 | 2 | 9 | 0 |
| San Bernardino (*2) | \$17,512.55 | 100% | 11 | 18 | 1 | 3 | 0 | 3 | 0 |
| San Diego (*1) | \$482,982.95 | 68% | 106 | 103 | 125 | 114 | 0 | 2 | 0 |
| San Luis Obispo (*1) | \$10,485.89 | 70% | 4 | 4 | 1 | 0 | 0 | 0 | 0 |
| Santa Barbara (*1) | \$19,904.44 | 57% | 8 | 49 | 1 | 0 | 4 | 0 | 0 |
| Tulare | \$336,871.35 | 53% | 66 | 1 | 2,670 | 0 | 0 | 250 | 75 |
| Ventura (*3) | \$123,239.50 | 40% | 14 | 5 | 51 | 1 | 0 | 0 | 0 |
| Total | \$2,263,648.98 | 68% | 337 | 852 | 5,714 | 613 | 45 | 293 | 75 |

(*#) = number of invoices missing from reporting period

SOUTHERN DISTRICT UPDATE

JUNE 9, 2021

HLB DELIMITATION TREATMENTS- I

| | Total Properties | Properties Treated | No Host Properties | Refusals/No Contact | Completion |
|----------------------------|------------------|--------------------|--------------------|---------------------|------------|
| Montclair 1-5 Retreatments | 555 | 331 | 175 | 17/32 | 100% |
| Colton 1 Retreatments | 152 | 91 | 44 | 5/12 | 100% |
| Ontario 1 Retreatments | 205 | 95 | 105 | 2/3 | 100% |
| Whittier 1-18 | 2,601 | 919 | 1,550 | 88/26 | 100% |
| La Puente 1-4 Retreatments | 805 | 344 | 390 | 18/1 | 94% |
| Glendora 1 Retreatments | 255 | 77 | 168 | 6/4 | 100% |
| La Habra 1 & 2 | 319 | 143 | 146 | 15/15 | 100% |

HLB DELIMITATION TREATMENTS- II

| | Total Properties | Properties Treated | No Host Properties | Refusals/No Contact | Completion |
|---|------------------|--------------------|--------------------|---------------------|------------|
| Santa Ana | 428 | 27 | 297 | 1/0 | 76% |
| Santa Ana Retreatments | 1,727 | 342 | 1,333 | 25/27 | 100% |
| Huntington Beach 7 | 54 | 17 | 29 | 7/1 | 100% |
| Orange | 442 | 192 | 217 | 15/10 | 98% |
| La Habra 1 & 2 | 319 | 143 | 146 | 15/15 | 100% |
| Compton 1 Retreatment | 87 | 37 | 40 | 0/1 | 100% |
| Public meetings have been scheduled for Los Angeles County on June 8 th and Orange County on June 10 th . | | | | | |

SOUTHERN DISTRICT STAFFING - UPDATE

| County | Permanent Staff | Seasonal Staff | Pending Hiring | Hiring Status |
|------------------------------|-----------------|----------------|---|--|
| Los Angeles | 29 | 15 | One PPA I | Interviews conducted in the first week of June, anticipated start July 1 st |
| Orange | 15 | 8 | Three PPA I- one pending announcement | Interviews conducted for two in the first week of June, anticipated start July 1 st |
| Riverside and San Bernardino | 17 | 15 | NONE | NONE |
| San Diego and Imperial | 16 | 7 | One PPA I | Interviews conducted in the first week of June, anticipated start July 1 st |

SOUTHERN DISTRICT STAFFING - PROJECTS

| County | Survey (Delim, Risk, Quadrant, CRB, Commodity) | Treatments (Delim, AW buffer, Border buffer, Tree removals) | Regulatory (ACP & HLB quarantine) |
|------------------------------|--|---|-----------------------------------|
| Los Angeles and Orange | 39 | 19 | 5 |
| Riverside and San Bernardino | 17 | 10 | 5 |
| San Diego and Imperial | 20 | 0 | 2 |



Central District Update

Operations Subcommittee Meeting

June 9, 2021



Central District Update

- **Trapping**

- Detection trapping for Madera and Fresno Counties is ongoing
- Delimitation trapping in Madera County; 44 traps; monthly servicing
- Kern County delimitation trapping continues; 2,757 traps; monthly servicing
- SLO County delimitation trapping, 62 traps split between CRB and CDFA; monthly servicing
- Santa Barbara and Ventura Counties AW trapping is ongoing
- County Quality Control inspections began in March and will be ongoing as time allows





Central District Update

- **Treatment**

- Kern County's last ACP detection was in March 2021
 - *Tamarixia* releases are ongoing

- **Risk Survey**

- 2020 Cycle 2 for Fresno, Tulare, Kern is complete
- Central District offices began 2021 Cycle 1

- **Citrus Commodity Survey**

- Staff began citrus commodity surveys in Ventura, Kern, Tulare, Fresno, and Madera counties



Central District Update - Projects

| Office | Citrus Commodity Staff | Risk Survey Staff | ACP Trapping Staff |
|-----------|------------------------|--|--------------------|
| Fresno | 3 | 7 | 3 |
| Visalia | 2 | 3 | 1 |
| Shafter | 2 | 3 | 1 |
| Camarillo | 2-3 | 2 (when not conducting commodity survey) | 1-2 |
| | | | |
| | | | |



Central District Update-Staffing

| County | Total Perm Staff (current) | Pending Hiring (vacancies) | Hiring Status |
|---------------------------------------|-------------------------------|--|--|
| Fresno County (Fresno) | 13 | -- | Fully staffed |
| Kern County (Shafter) | 6 | 2 PPA I 1 PPA II | PPA positions announced; applications in screening process |
| Tulare County (Visalia) | 7 | 2 PPA I | 1 expected new hire June 15; 1 PPA I will be re- announced |
| Tulare County (Visalia Regulatory) | 1 | -- | -- |
| Ventura County (Camarillo) | 4 | 1 ES 1 PPA III 3 PPA II 3 PPA I | PPA positions announced, applications in screening process |

Camarillo has majority of the vacancies (lack of office space, cost of living)



Northern District Update
Operations Subcommittee Meeting
June 9, 2021

Northern District Update - Trapping



Detection

Year-round trapping

- Placer
- San Joaquin
- Stanislaus

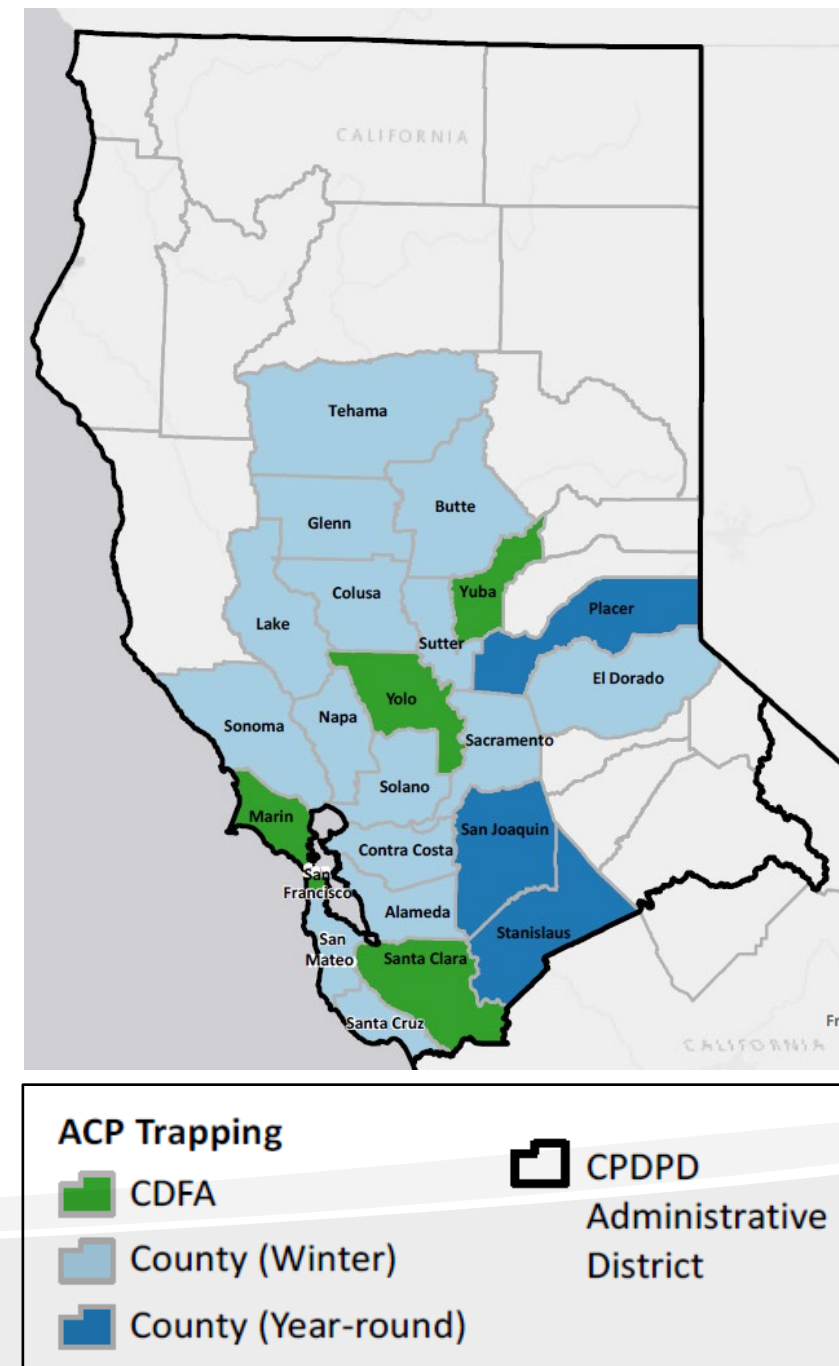
Delimitation

Contra Costa

- No additional detections

Santa Clara

- No detections in June 2021
- *Tamarixia* released monthly



Northern District Update – Risk Survey



| Completed | |
|-----------|------------|
| | |
| Butte | Solano |
| Calaveras | Sonoma |
| Marin | Stanislaus |
| Placer | Sutter |
| | |
| | |

| In Progress |
|---------------|
| |
| Contra Costa |
| Napa |
| San Francisco |
| San Mateo |
| Santa Clara |



Northern District Update - Staffing



| Field Office | Total Permanent Staff | Pending Hiring | Hiring Status |
|------------------------|-----------------------|----------------|---|
| Bay Area | 2 | 0 | N/A |
| N. California/Bay Area | 8 | 1 | Minimum qualifications under evaluation |
| Sacramento | 9 | 0 | N/A |
| Other: Data Analysis | 4 | 0 | N/A |

Statewide GL Coordinator Update for the 6/9/21 Operations Meeting

Staffing

The Riverside GL position has been filled, please welcome Tom Mullen. The RFPs are complete, and the candidates have been selected. They will all be in place on July 1st. As you will see in the notes below, Sylvie Robillard decided not to apply again for the Fresno-Madera GL position. We thank her for her service and will miss her. We await a well-qualified person to fill her shoes.

Fresno County – Sylvie Robillard

Sylvie is pleased to report there have been no ACP detections to date in 2021. It is almost three years since a psyllid has been found in commercial citrus in Fresno County.

On a personal note, I have decided not to reapply for a grower liaison contract. I would like to thank the committee for their support. I will do what I can to ensure a successful transition to the next liaison.

Northern Tulare County- Teri Blaser

Teri reports, as of this update there have not been any finds of Asian citrus psyllid in the Northern Tulare County area. Teri continues to monitor for abandoned groves on her travels through the northern part of the county. New citrus plantings are going in throughout the Northern Tulare County and Teri will contact Rick Dunn, the Citrus Research Board's Director of Data and Information Management, regarding these new plantings.

Southern Tulare County – Jessica Leslie

For the month of May 2021, there have been no new ACP finds in Southern Tulare County.

There have not been any HLB trees found in SJV as of now. Jessica has continued to send out her monthly e-mail updates to all interested parties as well as reaching out to current and prospective PMA team leaders. In her email updates she also has been including information about bloom as well as the current citrus commodity survey that is happening within Tulare County currently. If anyone who is not currently receiving her monthly e-mail updates is interested, please e-mail or call Jessica.

Kern County – Judy Zaninovich

Judy reports no new ACP detections in Kern County. So far in 2021, there has been a total of 3 ACP detections – the last one was in March. CDFA staff are continuing to make regularly scheduled releases of Tamarixia parasites in residential areas where ACP has been found in the county.

Judy also reports the Glassy-winged Sharpshooter (GWSS) Area-wide Management Program has been working with organic citrus growers in key areas of Kern County with higher populations of GWSS. Organic growers in the Highway 65 and Edison areas have been asked to apply back-to-back treatments aimed to control GWSS nymphs. These treatments will also help in suppressing any undetected ACP populations.

The San Joaquin Valley ACP/HLB Task Force will continue to closely monitor all ACP detections in Kern County and may recommend a coordinated treatment in the late summer/early fall.

San Luis Obispo County - Cressida Silver

There have been no new ACP detections in the county. Cressida assisted with biological control releases in residential areas of Nipomo.

Santa Barbara County - Cressida Silver

Final AWM participation percentages for winter were submitted to CDFA. The same PMAs that consistently reach or exceed the 90% threshold did so again. The same three PMAs that consistently fall short of the 90% threshold had 63%, 74% and 85% participation. Cressida recruited grower support for an Op Ed and for cotton trailer banners at three orchards along busy corridors in residential areas of Goleta.

Ventura County - Sandra Zwaal and Cressida Silver

In collaboration with the Ventura CAC and the CRB, both grower liaisons are preparing the annual grove and grower updates that make up the Ventura County citrus layer. The fall ACP area wide treatment schedule will be similar to the previous years' schedule and scheduled to begin July.

San Bernardino County – Sandra Zwaal

In a collaborative effort to provide both residential and commercial outreach, a booth was secured at the Redlands Farmer's Market with Nuffer, Smith, and Tucker (NST) providing outreach materials to backyard citrus growers and grower liaison Sandra Zwaal speaking directly to the commercial citrus vendors.

The fall ACP area wide treatment will begin mid-July. The annual grove and grower data updates are occurring. Sandra will collaborate with both the CAC and CRB for an updated citrus layer.

Riverside County – Vacant

Tom reports that ACP AWT compliance percentages are now completed with over 90% compliance in Coachella and over 99% compliance in Hemet. Reimbursement amounts will remain unchanged for Coachella. There is not a coordinated treatment for UCR area at this time.

Sweet Orange Scab Incident Team has finalized protocols and are awaiting USDA/CDFA approval. Surveys will begin in the coming weeks. Compliance agreements with packers, growers, and nurseries are in progress.

He is still working on mapping all areas and will have a more comprehensive detail of groves by end of June.

Coachella – Riverside County Citrus Pest Control District No. 2

The District manager has finished processing the ACP reimbursements, as well as calculating our compliance percentages from our Winter ACP area-wide treatment. Valley-wide we achieved 93% compliance. Zones 1,2, and 4 were well over 90% with Zone 3 falling just short at about 86%.

The District has finished the all of the organic red scale eradication treatments, and is about half way through the red conventional red scale eradication treatments. These sprays will continue through mid-June. Red scale trapping will begin in 2 weeks.

Lastly the District will continue our intensive tree removal program of citrus trees that are in close proximity to commercial groves and are difficult and costly to treat. To date the District has removed 3,603 citrus trees at 54 different locations. 14 trees were recently removed at 5 different locations. ACP was found at all 5 sites which was very concerning, and is strong evidence for the importance of the ACP residential buffer treatments.

Imperial County – Curtis Pate

Curtis report that there were no new trap hits, but he has found nymphs in a commercial block last week. This block has already been treated. The Canine Detection Service team is working this week in the area to give us a better idea of population pressure.

Since we have had an unusually mild spring, generating more flush and an extended bloom cycle, Curtis expects the detection dogs to generate more need to treat.

San Diego County – Sandra Zwaal

The spring ACP area wide treatment schedule completed May 31 where citrus properties within the San Diego Pest Control District (SDPCD) had mandated treatments and groves outside the SDPCD were encouraged to treat. The fall ACP area wide treatment is expected to occur July/August.

The University of California submitted a Cal Fire grant application to remove dead and dying citrus trees.

Grove information and contacts near the Fallbrook area continue to be verified and updated by grower liaison, Sandra Zwaal.

Neglected/Abandoned Groves

No changes reported by the CACs. The GLs continue to work with the growers and CAC staff to address any suspected abandoned groves.

| County | BOS Sup (Y/N) | Co Coun Sup (Y/N) | #Groves Report'd | #Groves Confrmd N/A | Total Acs (100 trees/ac) Confrmd | #owners contactd | #1st Letrs | #2nd Letrs | #3rd Letrs | #Heard | Hears won | #Hears lost | Groves Remvd | Total Acs Remvd | #Groves Rem'd | Acs Rem'd | #Groves Pndg | Total Acs Pndg | | | |
|-----------------|---------------------|----------------------------|---------------------|---------------------------|---|---------------------|---------------|---------------|---------------|----------|--------------|----------------|-----------------|-----------------------|------------------|--------------|-----------------|----------------------|---------------------------------|--|--|
| Fresno | | | | | | | | | | | | | | | | | | | | | |
| Kern | Y | Y | 3 | 1 | 60.36 | 1 | | | | | | | | | | | 1 | 60.36 | | | |
| Madera | | | | | | | | | | | | | | | | | | | | | |
| SLO | Y | Y | | | | | | | | | | | | | | | | | | | |
| Tulare | Y | Y | 88 | 88 | 1148 | 88 | 44 | | | | 1 | 1 | 0 | 66 | 908 | 9 | 79 | 13 | 161 | | |
| Subtotal | | | 91 | 89 | 1208.36 | 89 | 44 | | | 1 | 1 | 0 | 66 | 908 | 9 | 79 | 14 | 221.36 | | | |
| Imperial | Y | Y | 1 | 1 | 6 | 1 | | | | | | | | 1 | 6 | | | | | | |
| LA | | | | | | | | | | | | | | | | | | | | | |
| OC | | | | | | | | | | | | | | | | | | | | | |
| Coachella | | | 48 | 48 | 34.12 | 48 | | | | | | | 48 | 34.12 | | | | | Coachella is a PCD in Riverside | | |
| Riverside | Y | Y | 92 | | 264.81 | 43 | 43 | 43 | 11 | | | | 22 | | | | 35 | | | | |
| San Brdo | | | | | | | | | | | | | | | | | | | | | |
| SD | Y | Y | 108 | 61 | 1693 | 61 | 39 | 28 | 24 | | | | 37 | 774 | | 71 | 919 | | | | |
| Sta Barb | | | | | | | | | | | | | | | | | | | | | |
| Ventura | Y | Y | | | | | | | | | | | | | | | | | | | |
| Subotal | | | 108 | 110 | 1997.93 | 153 | 82 | 71 | 35 | 0 | 0 | 0 | 108 | 814.1 | 0 | 71 | 954 | 0 | | | |
| Total | | | 340 | 199 | 3206.29 | 242 | 126 | 71 | 35 | 1 | 1 | 0 | 174 | 1722 | 9 | 150 | 968 | 221.36 | | | |



Data Analysis and Tactical Operations Center (DATOC)

*CPDPC Operations Subcommittee Meeting
June 9, 2021*

*Neil McRoberts
Holly Deniston-Sheets
Monique Rivera
DATOC@citrusresearch.org*

Request to DATOC

- At the April Operations Subcommittee meeting, results of some residential buffer treatments around commercial groves were reviewed.
 - Compliance was variable; some areas were concerning
 - Requested DATOC review the data
 - CDFA shared data for a few areas which they thought had high refusal rates **only**

Results

| | Hemet | Ventura |
|----------------------------------|-----------|-----------|
| Total Properties | 1,275 | 463 |
| Properties included ¹ | 900 | 411 |
| Treated | 641 (71%) | 254 (62%) |
| Refusals | 232 (26%) | 134 (33%) |
| Properties bordering a grove | 100 | 29 |
| Refusals bordering a grove | 30 (30%) | 12 (41%) |
| 25+ | | 10 |

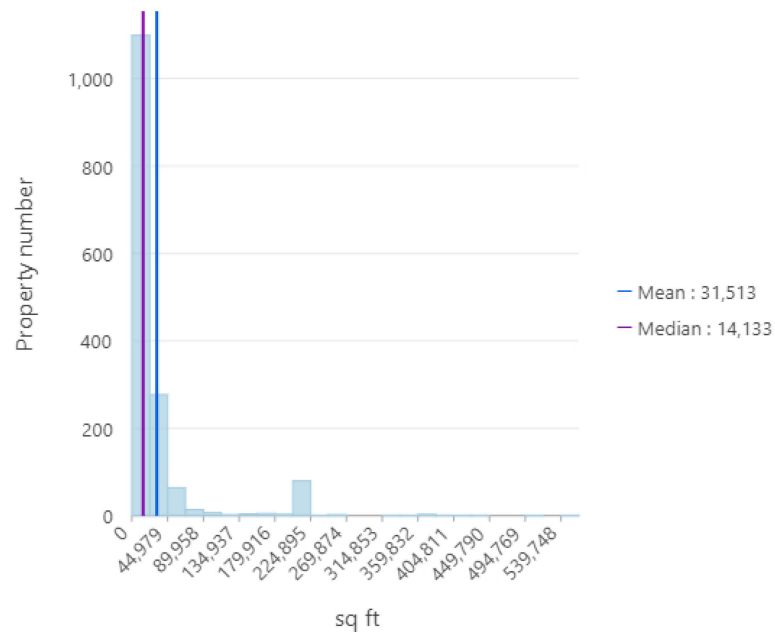
¹For the numbers in rows below, properties **without** citrus present were excluded.

Common reasons for refusal

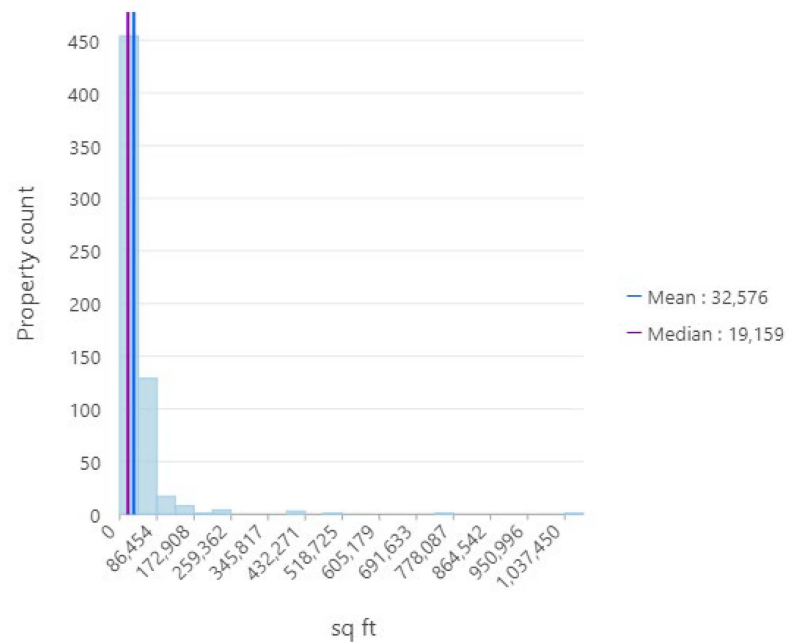
In order of most to fewest observations:

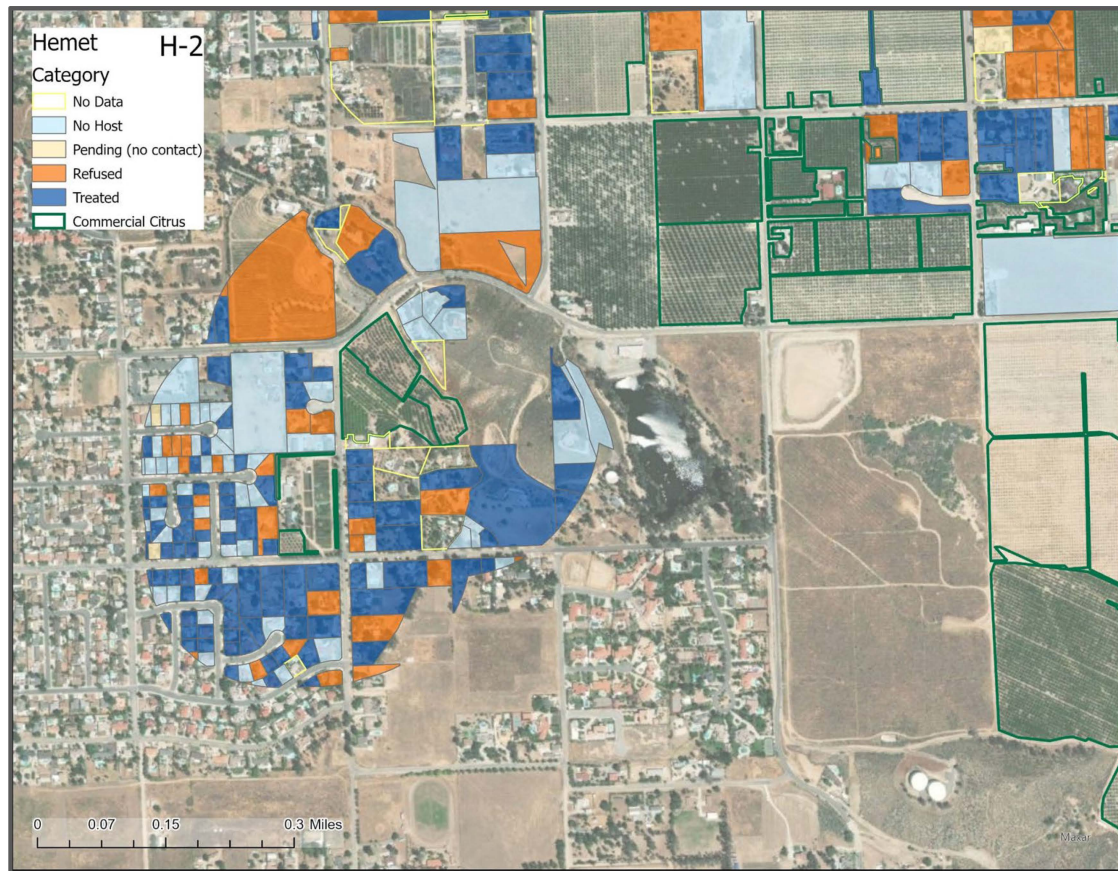
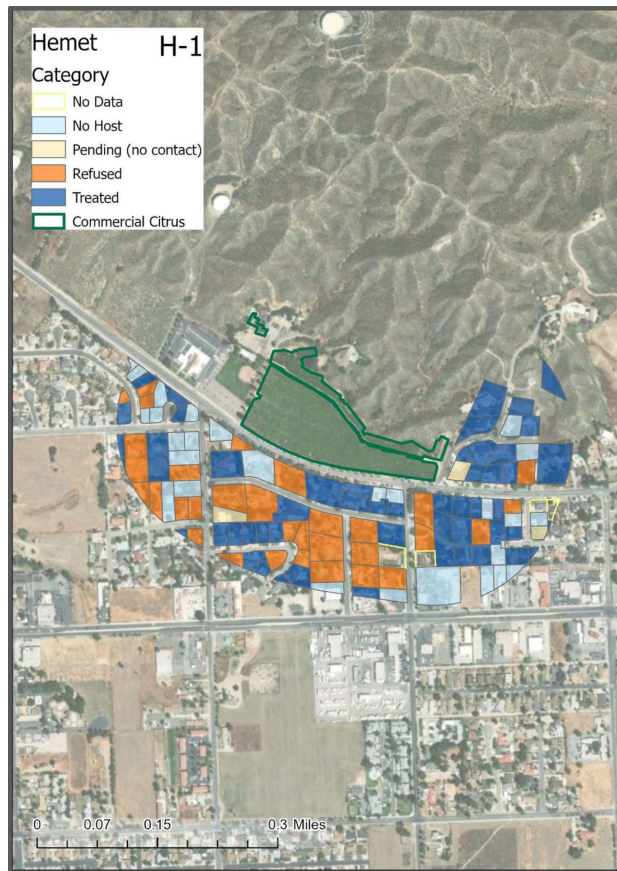
- Most frequently no reason is given
- No access (e.g. locked gates or vacant home)
- Treatment is believed harmful for trees, other organisms (e.g. bees, birds)
- Animals present on the property (e.g. dogs, chickens)
- Privacy (i.e. don't want anyone on the property)
- Concerns about chemical/pesticide use

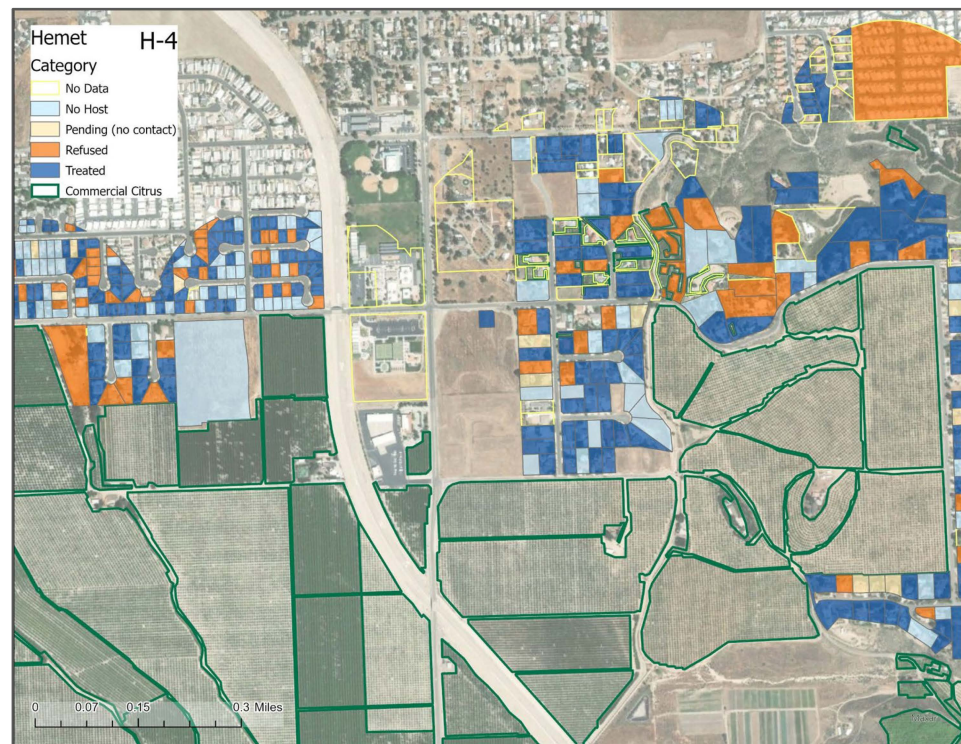
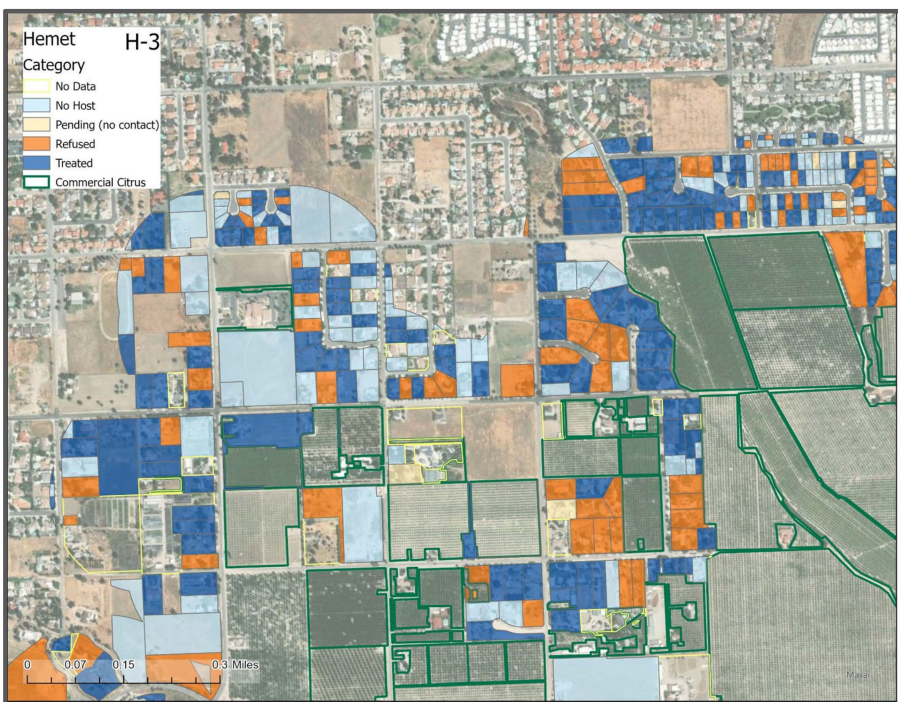
Hemet distribution of property size

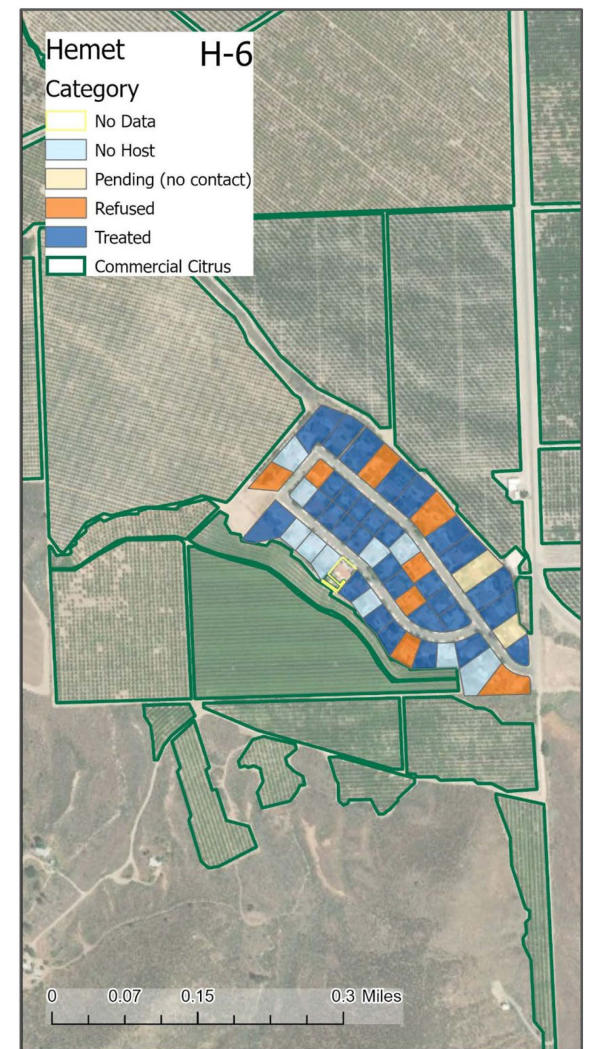
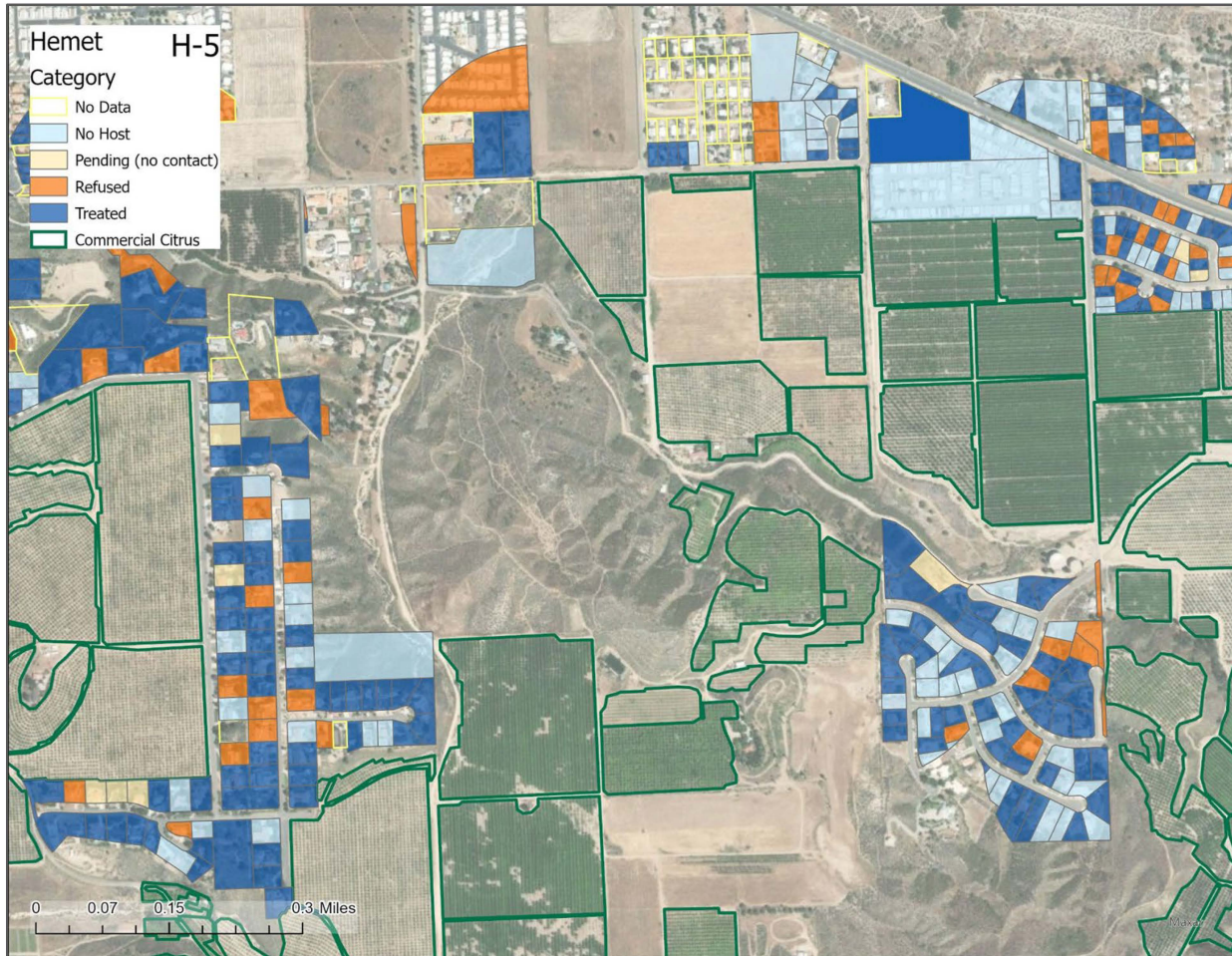


Ventura property size distribution



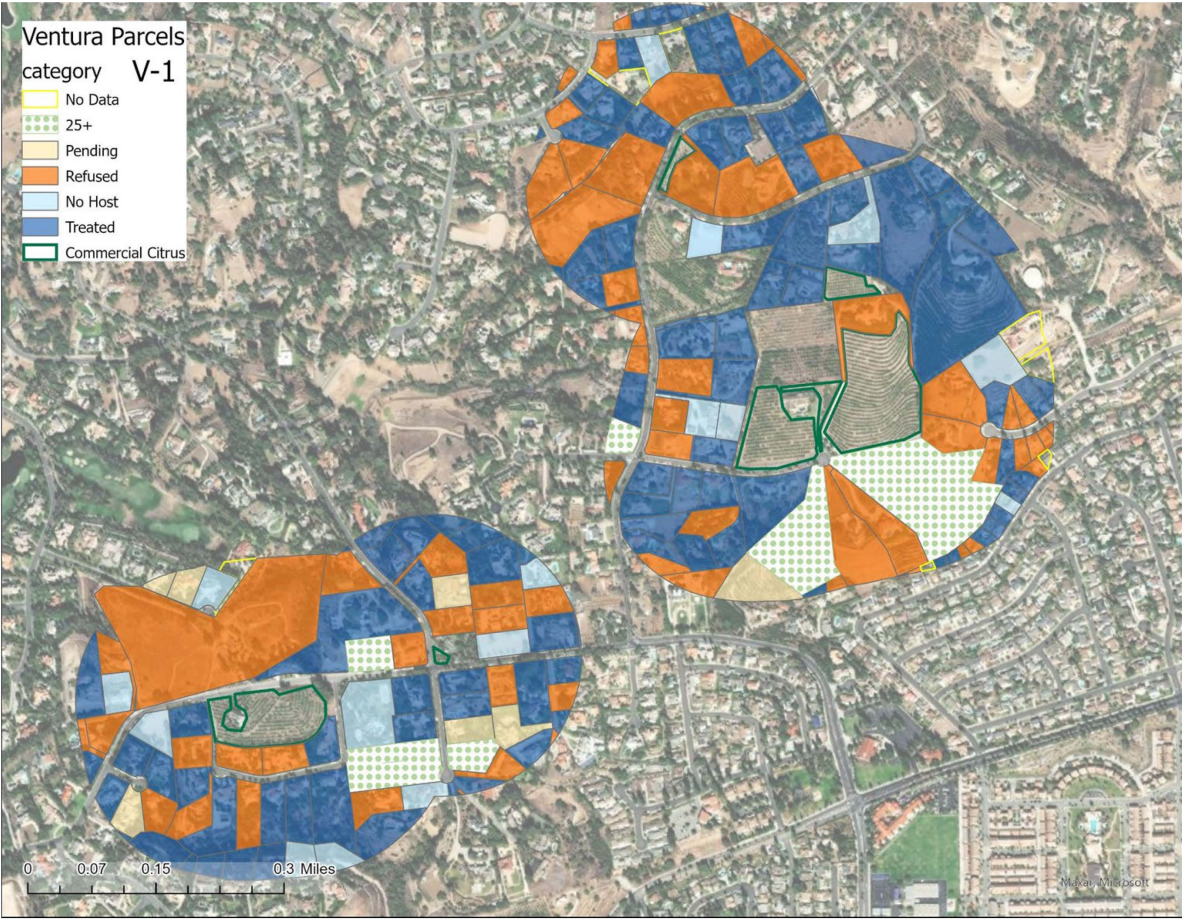






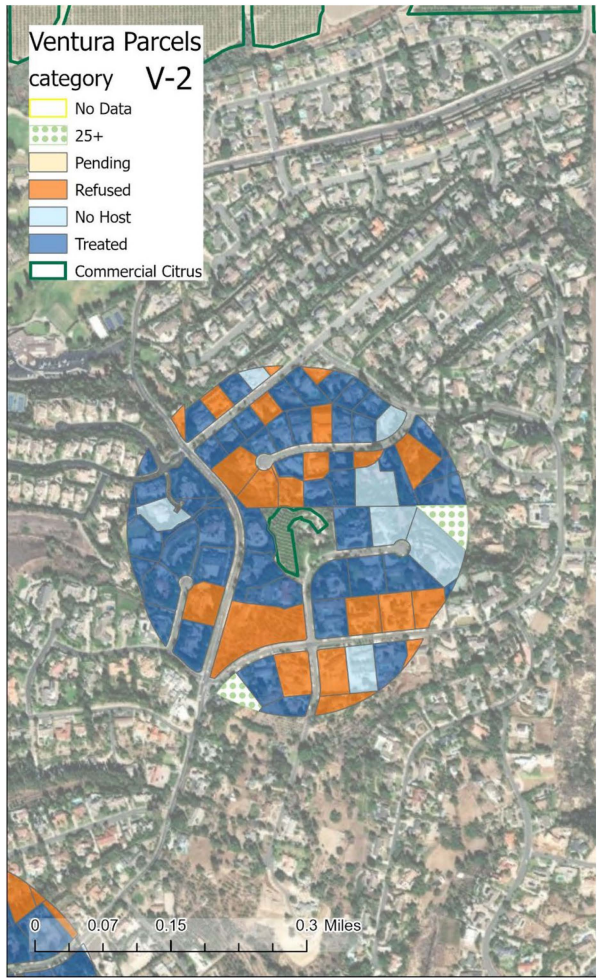
Ventura Parcels
category V-1

- No Data
- 25+
- Pending
- Refused
- No Host
- Treated
- Commercial Citrus



Ventura Parcels
category V-2

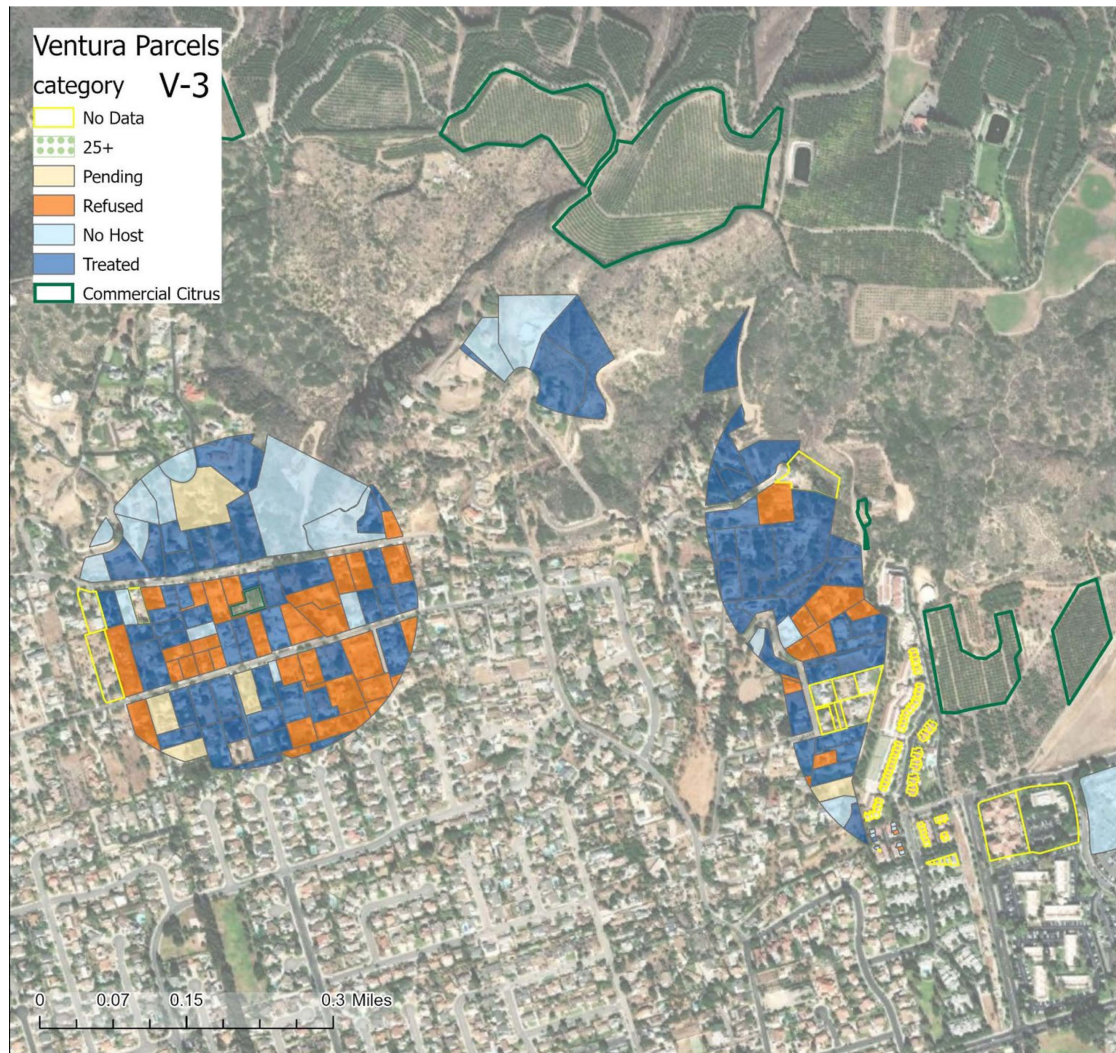
- No Data
- 25+
- Pending
- Refused
- No Host
- Treated
- Commercial Citrus



Ventura Parcels

category V-3

- No Data
- 25+
- Pending
- Refused
- No Host
- Treated
- Commercial Citrus



Budgetary considerations

Buffer treatment expenditures in 2019 - 20:

- \$667,721 (2.6% of all expenditures, 1.6% of total budget)

Buffer treatment budgeted 2020 - 21:

- \$1,619,827 (3.8% of total budget)