



HLB Detection, Delimitation, and Tree Removal Updates

Southern District

July 7, 2021



HLB find in Colton (San Bernardino County)

- Detected an HLB positive tree at a 25+ trees residential property while conducting resurvey in the area
- Remaining 39 trees have been placed on hold
- Quadrant survey on the remaining trees have been completed
- The tree is pending removal
 - All the remaining trees are medium sized, assorted varieties and in ground
 - Grower Liaison is coordinating with the owner to remove the tree and treat the remaining plants

HLB Delimitation Survey

| Areas | Total Properties | Properties Surveyed | No Host Properties | Refusals/No Contact | Completion |
|------------------|------------------|---------------------|--------------------|---------------------|------------|
| Long Beach 3 & 4 | 72 | 65 | 39 | 1/6 | 90% |
| Lakewood 3 | 472 | 287 | 251 | 4/2 | 61% |
| Los Angeles 1 | 263 | 256 | 182 | 1/5 | 86% |
| Pico Rivera 38 | 272 | 248 | 132 | 5/14 | 91% |
| Norwalk 5 | 597 | 130 | 101 | 1/2 | 22% |
| Irvine 2 | 268 | 35 | 19 | 4/1 | 13% |
| Fullerton 3 | 337 | 73 | 21 | 6/17 | 22% |

Quadrant Survey – 2021

(Find site, Adjacent, Inconclusive samples)

| County | Jan | Feb | Mar | April | May | June | July | Aug | Sept | Oct | Nov | Dec |
|----------------|------------|------------|------------|------------|------------|--------------|------|-----|------|-----|-----|-----|
| Los Angeles | 22 | 43 | 59 | 203 | 32 | 94 | | | | | | |
| Orange | 285 | 124 | 27 | 266 | 365 | 353 | | | | | | |
| Riverside | 25 | 70 | 123 | 361 | 0 | 0 | | | | | | |
| San Bernardino | 0 | 0 | 0 | 25 | 379 | 584 | | | | | | |
| San Diego | 52 | 0 | 0 | 0 | 0 | 0 | | | | | | |
| Imperial | 0 | 0 | 118 | 0 | 0 | 0 | | | | | | |
| Total | 384 | 237 | 209 | 855 | 776 | 1,031 | | | | | | |

HLB Border Buffer Risk Survey

| County | Cycle 3-2021 | Number of Sq. miles | | Number of Sites Surveyed | Number of Sites | | Completed Sq. miles |
|---|----------------------------------|---------------------|-----------|--------------------------------|------------------|------------------|------------------------|
| | | Proposed | Completed | | Ento. Samples | Plant Samples | |
| San Diego (Tecate, Portero, San Ysidro, and San Diego) | Spring (March 23- June 21) | 26 | 26 | 251 | 55 | 79 | 100% |
| Imperial (Calexico, Holtville, and Winterhaven) | Winter (March 23- June 21) | 36 | 36 | 268 | 4 | 243 | 100% |



Citrus Commodity Survey

(Survey 20% citrus acreage every year for citrus pests during Spring & Fall)

| County | Total Area (acres) | Surveyed Area (acres) | Completion % |
|----------------|--------------------|-----------------------|--------------|
| Imperial | 1,573.63 | 1,210 | 77% |
| San Bernardino | 655.78 | 555 | 85% |
| Riverside | 3,388.71 | 2,465 | 73% |
| San Diego | 2,088.31 | 1,070 | 51% |

CRB Tissue and Seasonality Sampling

(Young/old leaves, peduncle, bark, and roots) March 20, 2021 - June 20, 2021

| County | Non-Positive sites (Inconclusive, ACP, Dog alert) | HLB Positive Sites |
|----------------|---|--------------------|
| Orange | 14 | 54 |
| Los Angeles | 25 | 6 |
| Riverside | 2 | 4 |
| San Bernardino | 2 | 7 |
| TOTAL | 43 | 71 |

The last and the final segment of this survey will be conducted from June 21 thru Sept 21.

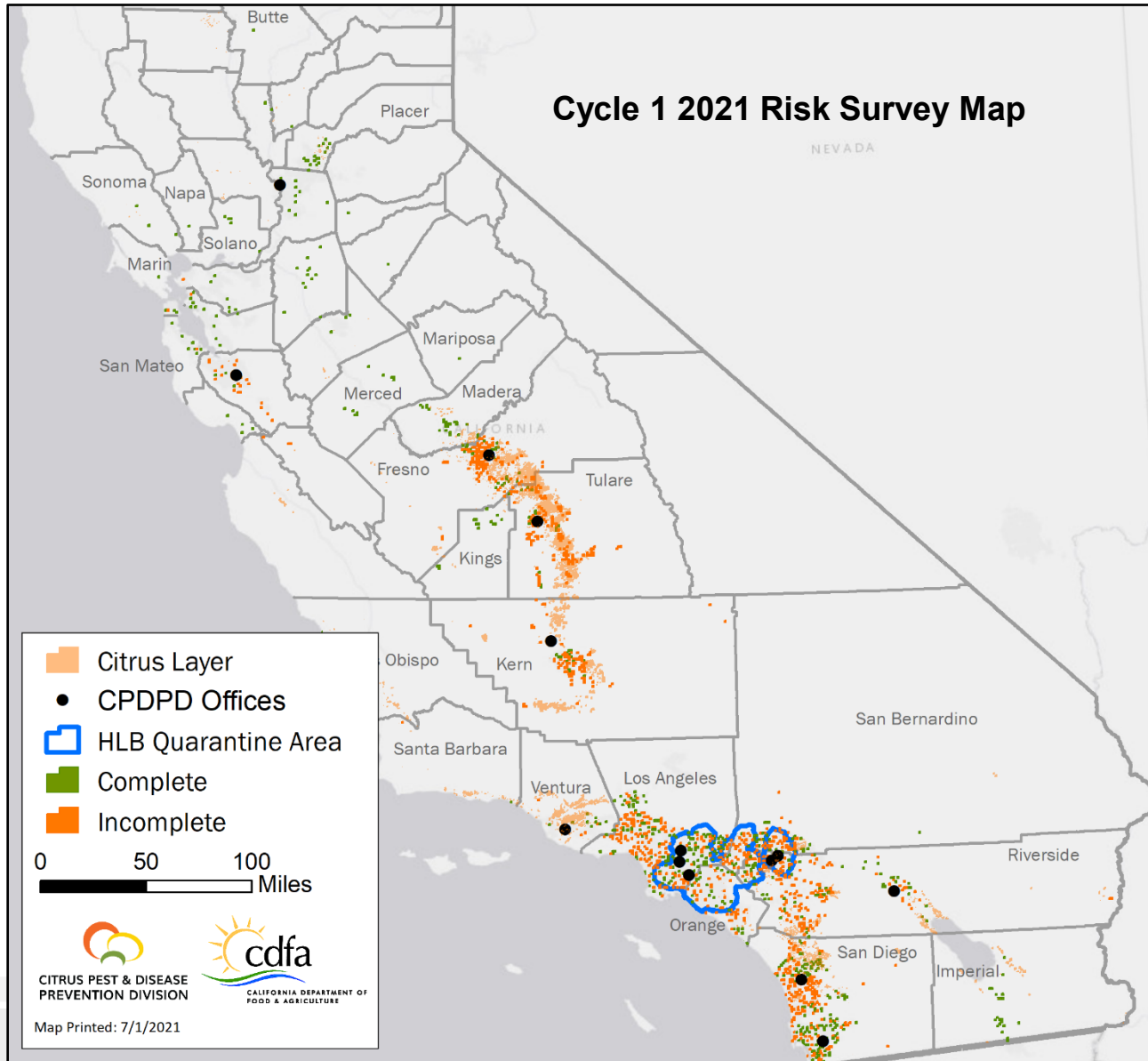
HLB Positive Trees- June

| County | HLB Positive Trees | Trees Removed | Cumulative Pending |
|----------------|--------------------|---------------|--------------------|
| Los Angeles | 13 | 6 | 9 |
| Orange | 34 | 29 | 15 |
| San Bernardino | 1 | 2 | 1 |
| Riverside | 0 | 0 | 0 |
| TOTAL | 48 | 37 | 25 |



Risk Survey Update
Operations Subcommittee Meeting
July 7, 2021

Risk Survey Cycle 1 (2021 Status)



- Began Mid-March
- 37% Complete
- Survey Complete in 22 of 36 Allocated Counties
- 17,225 Properties Visited
- 8,771 Properties Sampled
- 4,826 Entomology PDRs
- 5,115 Plant PDRs

Cycle 1 2021 Risk Survey Map – Northern California

Citrus Layer

●

Risk Survey Staff / Office

Complete

Incomplete


HLB Quarantine Area

0


20

40

Miles

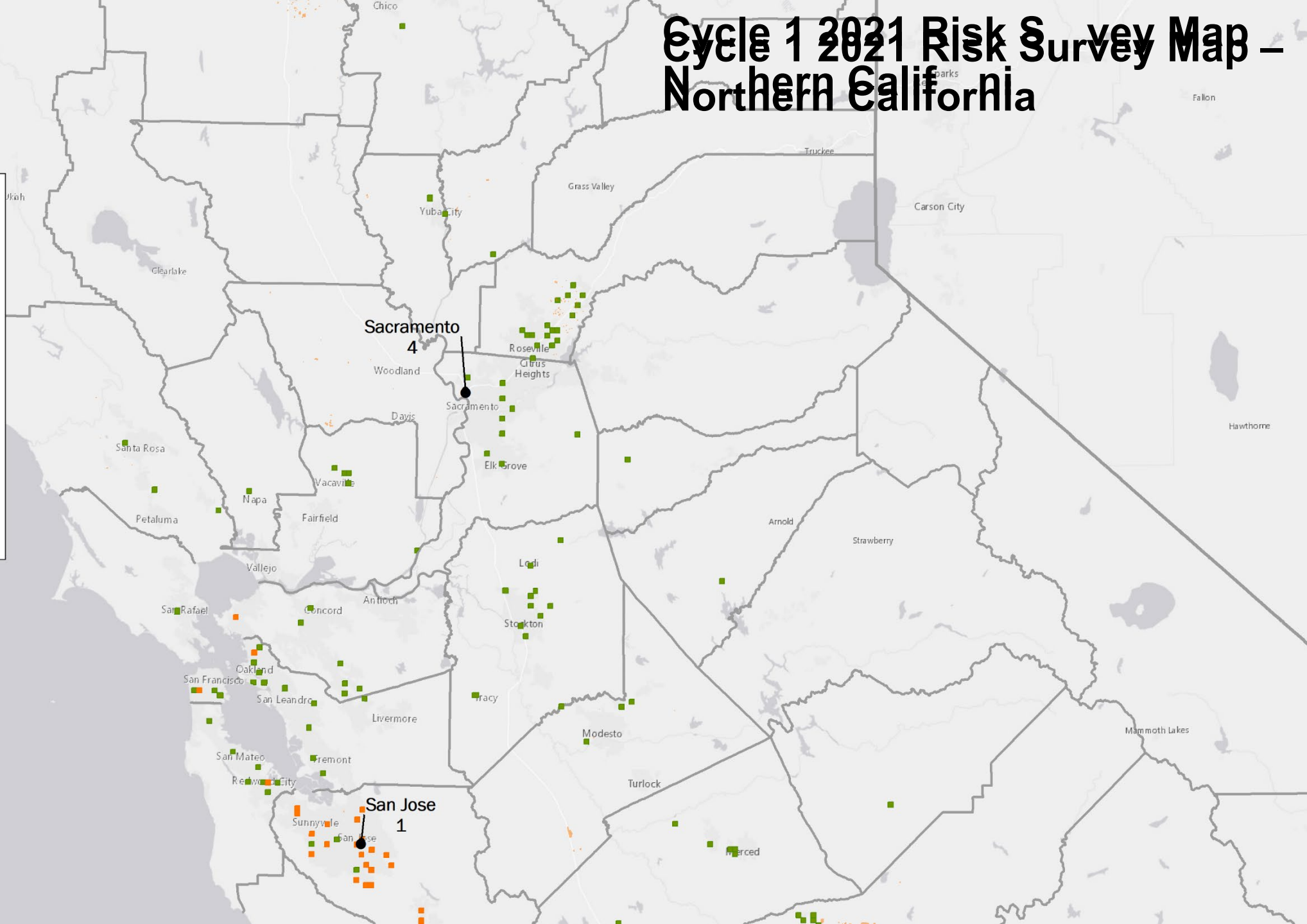


CITRUS PEST & DISEASE PREVENTION DIVISION

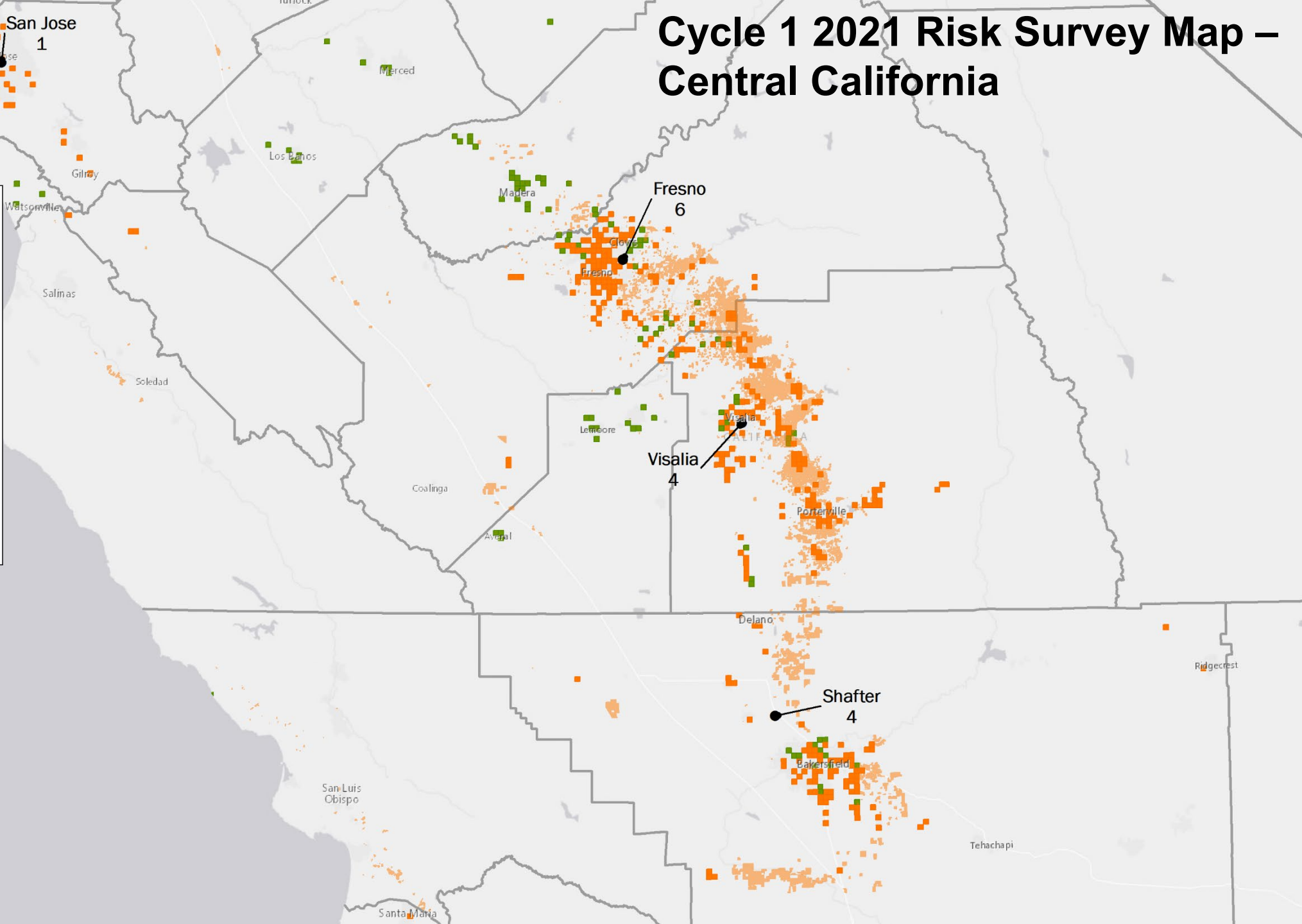
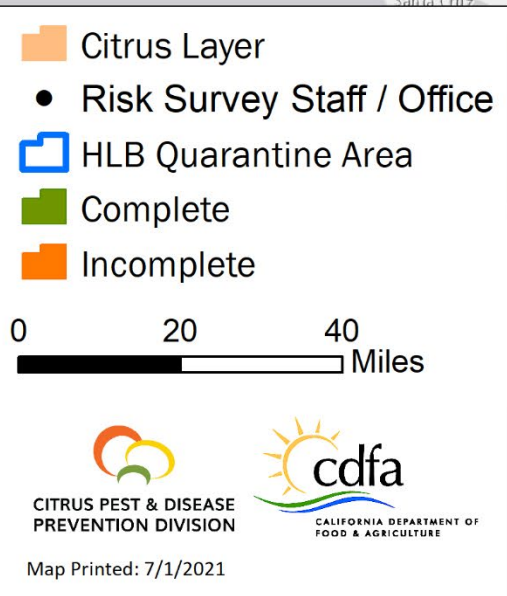


cdfa
CALIFORNIA DEPARTMENT OF FOOD & AGRICULTURE

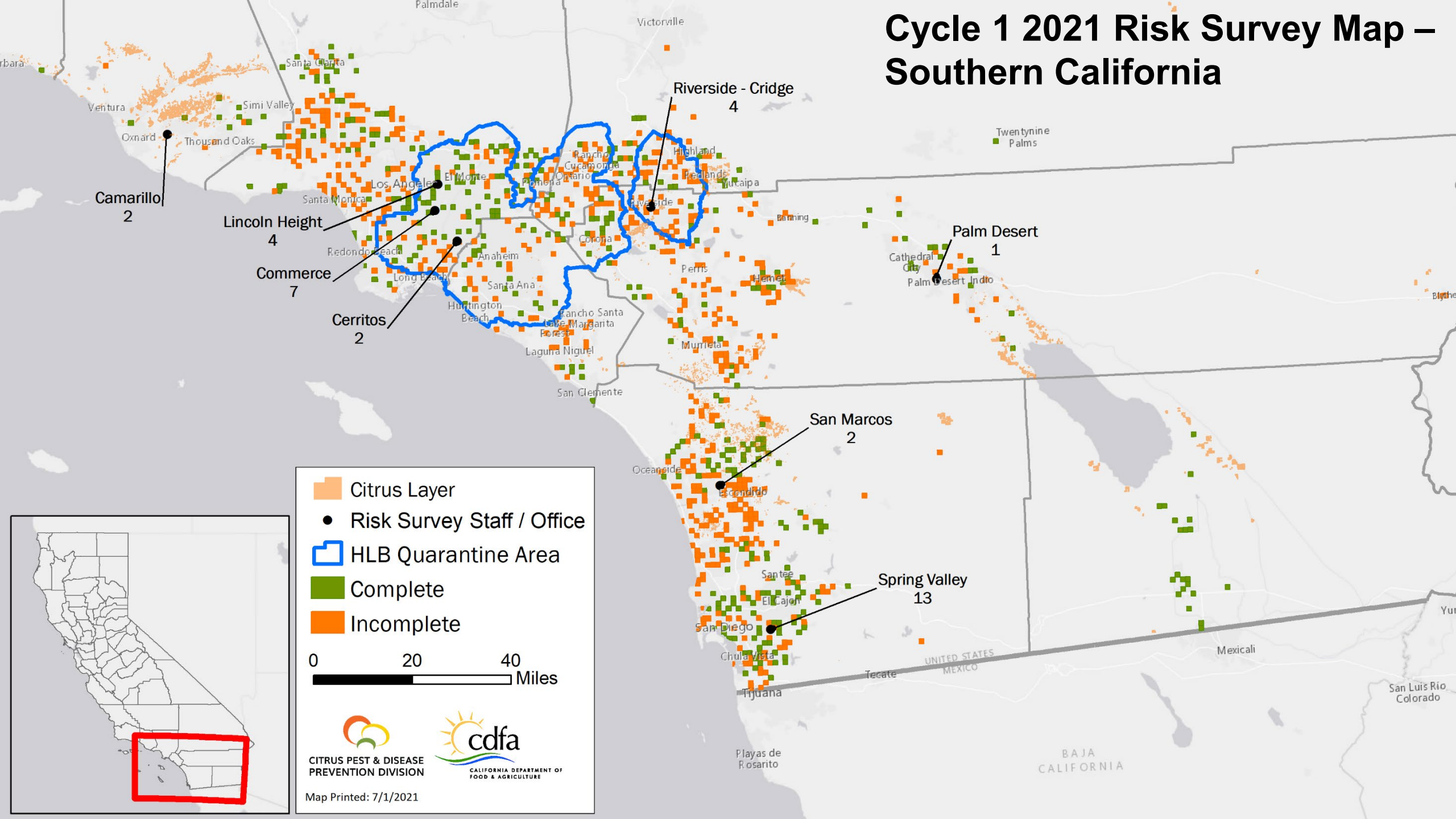
Map Printed: 7/1/2021



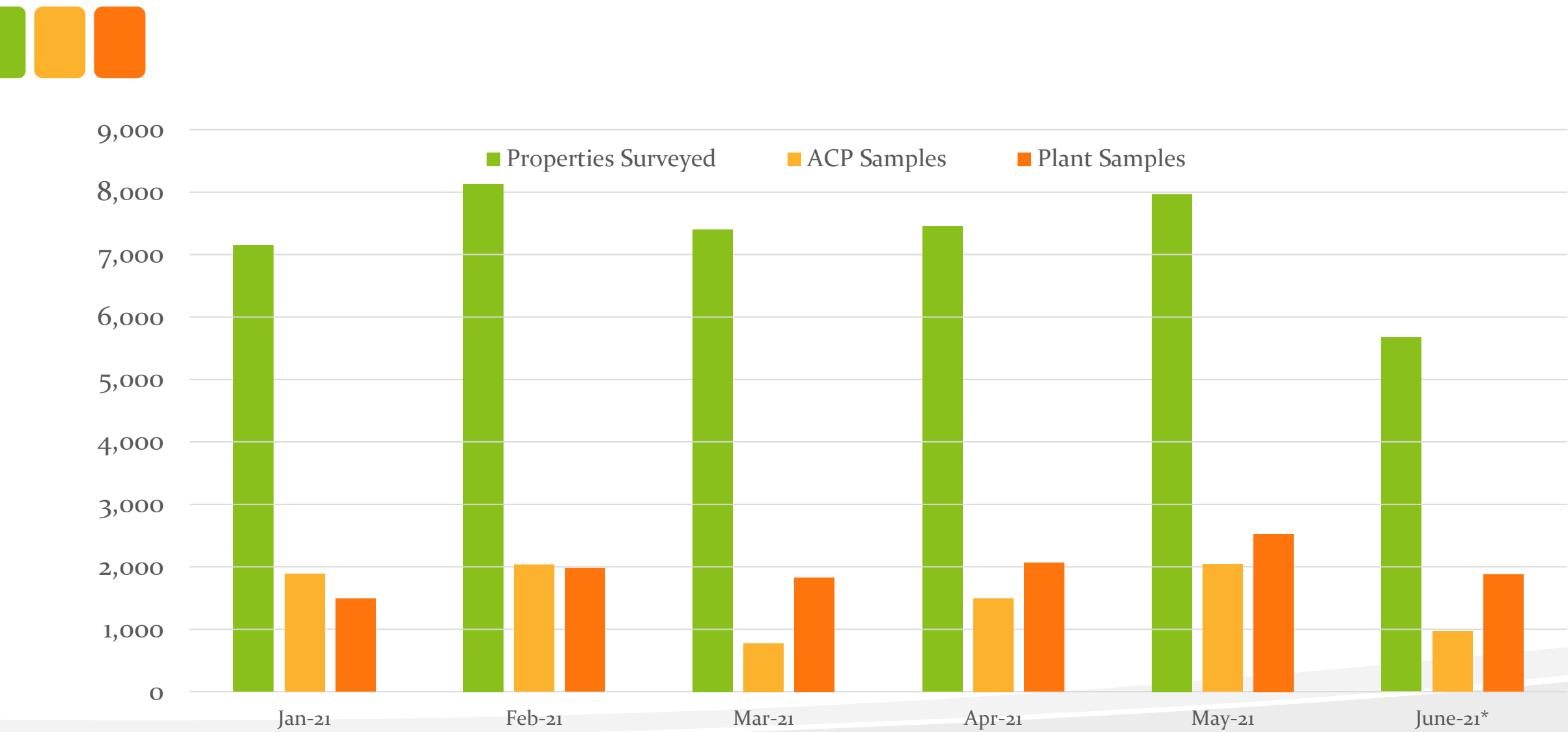
Cycle 1 2021 Risk Survey Map – Central California



Cycle 1 2021 Risk Survey Map – Southern California



Statewide Risk Survey Trends



*Data current as of 06/30/2021



Southern District Update

July 7, 2021

HLB Delimitation Treatments - I

| Area | Total Properties | Properties Treated | No Host Properties | Refusals/No Contact | Completion |
|------------------------|------------------|--------------------|--------------------|---------------------|------------|
| Santa Ana 69-73 | 832 | 446 | 317 | 16/14 | 95% |
| Santa Ana Retreatments | 1,907 | 932 | 831 | 43/86 | 99% |
| Lakewood 1 | 59 | 21 | 31 | 1/6 | 100% |
| Whittier 38 | 73 | 31 | 39 | 0/0 | 96% |

HLB Delimitation Treatments - II

| Area | Total Properties | Properties Treated | No Host Properties | Refusals/No Contact | Completion |
|---------------------------------|------------------|--------------------|--------------------|---------------------|------------|
| Los Angeles 1 | 168 | 72 | 85 | 2/3 | 96% |
| Long Beach 3 & 4 | 67 | 25 | 39 | 1/2 | 100% |
| Rosemead 1 & 2 Retreatments | 1,379 | 785 | 545 | 22/26 | 100% |
| Temple City 1-6 Retreatments | 579 | 321 | 213 | 17/26 | 100% |



Public Meetings

- Conducted a public meeting to cover new and retreatment areas in Los Angeles County on June 8
- Conducted a public meeting to cover new and retreatment areas in Orange County on June 10
- Combined two public meetings for better efficiency
 - Public meeting on July 7th will cover areas both in Los Angeles and Orange Counties

Southern District Staffing - Update

| County | Permanent Staff | Seasonal Staff | Pending Hiring | Hiring Status |
|------------------------------|-----------------|----------------|--|---|
| Los Angeles | 29 | 13 | 1 PPA I 6 seasonal | PPA I will start mid July. Waiting to be advertised |
| Orange | 12 | 8 | 1 APC (Sup) & 1 PPA III 13 seasonal | Reclassified and soon will be advertised |
| Riverside and San Bernardino | 17 | 16 | 16 seasonal | Waiting to be advertised |
| San Diego and Imperial | 17 | 6 | 5 seasonal | Waiting to be advertised |

Southern District Staffing - Projects

| County | Survey (Delim, Risk, Quadrant, CRB, Commodity) | Treatments (Delim, AW buffer, Border buffer, Tree removals) | Regulatory (ACP & HLB quarantine) |
|------------------------------|--|---|-----------------------------------|
| Los Angeles and Orange | 31 | 17 | 6 |
| Riverside and San Bernardino | 16 | 12 | 5 |
| San Diego and Imperial | 20 | 0 | 2 |



Central District Update

Operations Subcommittee Meeting

July 7, 2021

Central District Update

- **Trapping**

- Detection trapping for Madera and Fresno Counties is ongoing
- Delimitation trapping in Madera County; 44 traps; monthly servicing
- Kern County delimitation trapping continues; 2,757 traps; monthly servicing
- SLO County delimitation trapping, 62 traps split between CRB and CDFA
 - New ACP detection confirmed on 6/30 in the current delimitation
 - 1 adult on trap
 - No expansion
 - No treatment activity for CDFA; Grower treated on May 13
 - Weekly servicing will begin the week of July 6
- Santa Barbara and Ventura Counties AW trapping is ongoing
 - Prepping for area wide treatment to begin in August





Central District Update

- **Biocontrol releases**
 - Kern County's *Tamarixia* releases are ongoing
 - San Luis Obispo County's *Tamarixia* releases ongoing
- **HLB Risk Survey**
 - Central District offices working on 2021 Cycle 1
- **Citrus Commodity Survey**
 - Citrus commodity surveys in Ventura, Kern, Tulare, Fresno, and Madera counties are finished for the season
 - CC survey will begin again in the fall



Central District Update - Projects

| Office | Citrus Commodity Staff | Risk Survey Staff | ACP Trapping Staff |
|-----------|------------------------|--|--------------------|
| Fresno | 2 | 4 | 3 |
| Visalia | 2 | 3 | 1 |
| Shafter | 2 | 3 | 1 |
| Camarillo | 2-3 | 2 (when not conducting commodity survey) | 1-2 |
| | | | |
| | | | |



Central District Update-Staffing

| County | Total Perm Staff (current) | Pending Hiring (vacancies) | Hiring Status |
|---------------------------------------|-------------------------------|--|--|
| Fresno County (Fresno) | 13 | -- | Fully staffed |
| Kern County (Shafter) | 6 | 2 PPA I 1 PPA II | PPA positions announced; applications in screening process |
| Tulare County (Visalia) | 7 | 1 PPA I 1 PPA II | PPA I checking MQ's; PPA II to be announced |
| Tulare County (Visalia Regulatory) | 1 | -- | -- |
| Ventura County (Camarillo) | 4 | 1 ES 1 PPA III 3 PPA II 3 PPA I | PPA positions announced, additional screening, additional interviews |

Camarillo has majority of the vacancies (lack of office space, cost of living). Kick off meeting July 8.



Northern District Update
Operations Subcommittee Meeting
July 7, 2021

Northern District Update - Trapping



Detection

Year-round trapping

- Placer
- San Joaquin
- Stanislaus

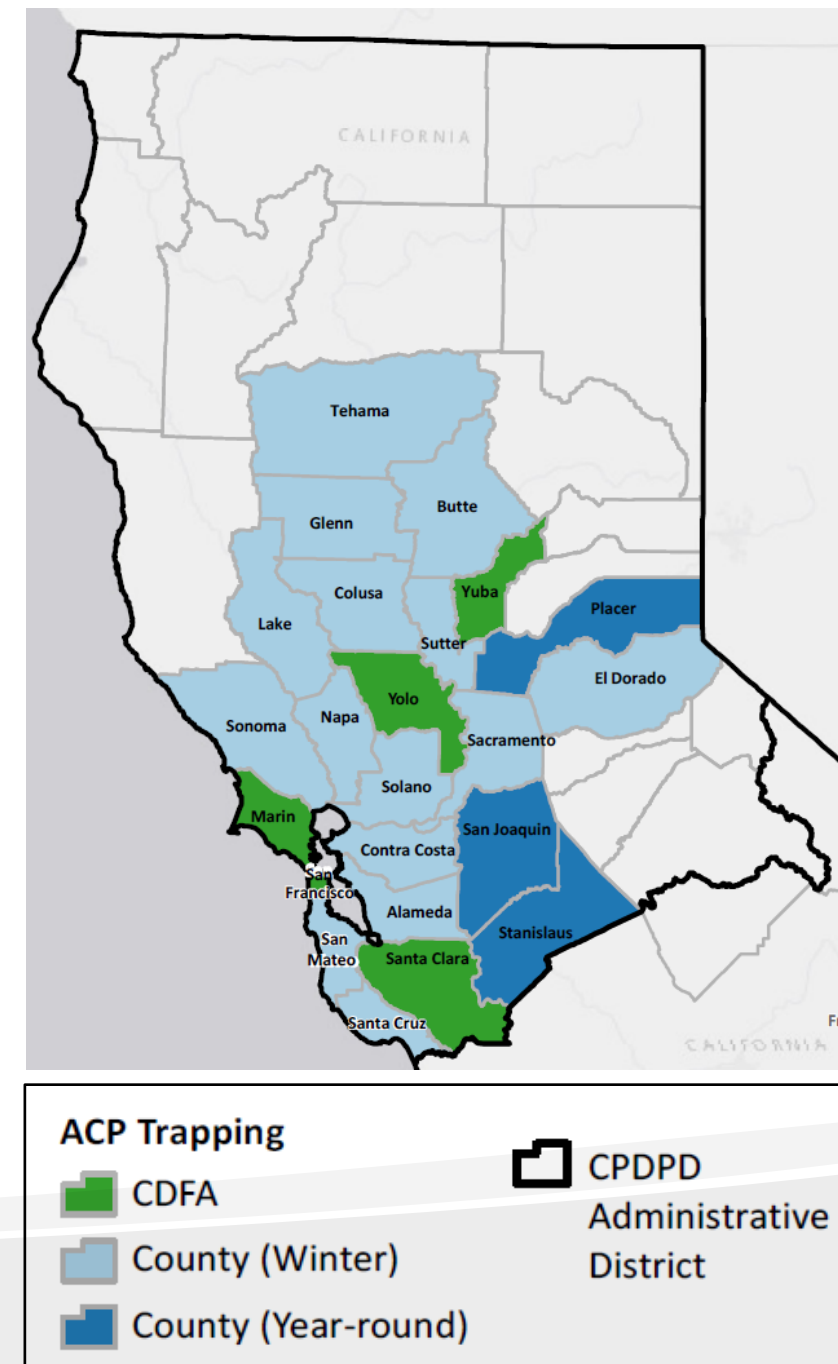
Delimitation

Contra Costa

- No additional detections

Santa Clara

- No additional detections
- *Tamarixia* released monthly



Northern District Update – Risk Survey



Completed

| | |
|---------------|-------------|
| Alameda | San Joaquin |
| Amador | San Mateo |
| Butte | Santa Cruz |
| Calaveras | Solano |
| Marin | Sonoma |
| Napa | Stanislaus |
| Placer | Sutter |
| Sacramento | Yuba |
| San Francisco | |

In Progress

Contra Costa
Santa Clara



Northern District Update - Staffing



| Field Office | Commodity Survey | Risk Survey | ACP Detection | Regulatory |
|--------------|------------------|-------------|---------------|------------|
| San Jose | 0 | 1 | 0 | 0 |
| Sacramento | 4 | 5 | 5 | 3 |

No permanent position vacancies.

Three seasonal position vacancies in San Jose.

Statewide GL Coordinator Update for the 7/7/21 Operations Meeting

Staffing

All the GL positions have been filled or renewed for the next two fiscal years. The Fresno-Madera GL position has been filled by Teri Blaser, who we all know well.

Fresno and Madera Counties – Sylvie Robillard

Sylvie is pleased to report to date in 2021 no ACP detections in either county. As a quick reminder each county had one trap detection in 2020. Neither find was near commercial citrus.

Northern Tulare County- Teri Blaser

Teri reports here have been no new finds since the February trap find in Exeter. In Teri's updates she is encouraging her growers to use ACP effective materials this fall and to monitor flushes of new growth as targets for ACP laying eggs

Southern Tulare County – Jessica Leslie

For the month of June 2021, there have been no new ACP finds in Southern Tulare County. Jessica has continued to send out her monthly e-mail updates to all interested parties as well as reaching out to current and prospective PMA team leaders. If anyone who is not currently receiving her monthly e-mail updates is interested, please e-mail or call Jessica.

Kern County – Judy Zaninovich

Judy reports no new ACP detections in Kern County. So far in 2021, there has been a total of 3 ACP detections – the last one was in March. The San Joaquin Valley ACP/HLB Task Force is continuing to closely monitor all ACP detections in Kern County and will announce soon whether to recommend growers participate in a coordinated treatment in the late summer/early fall considering the number of detections last fall and earlier this year.

Judy also reports the Glassy-winged Sharpshooter (GWSS) Area-wide Management Program worked with organic citrus growers in the late spring in key areas of Kern County with higher populations of GWSS to apply treatments. Organic growers in the Highway 65 and Edison areas mostly applied back-to-back Pyganic and oil treatments aimed to control young GWSS nymphs which should have also assisted in suppressing any un-detected ACP populations. Also, the timing of these treatments coincided with the request from the SJV Task Force that growers add an ACP-effective material to their post petal-fall treatments.

Both programs continue to work in close conjunction to help ensure their treatments will assist in lowering both ACP and GWSS vector populations whenever possible. This collaboration endeavors to get the best possible results while not over-taxing citrus growers with too many treatments in their orchards.

[San Luis Obispo County - Cressida Silver](#)

An adult ACP was trapped near the southern edge of the county, in the same block as previous detections. Cressida notified the grower. The block was treated within the previous month with an ACP-effective material, Cressida will collect the PUR to confirm dates and materials. The ranch treats regularly for regional quarantine compliance and other pests.

[Santa Barbara County - Cressida Silver](#)

A grower in Goleta wants to develop a localized program to offer interested residential neighbors no-cost removal of their unwanted citrus trees and replacement with non-citrus fruit trees. Cressida provided helpful contacts for the grower, including the Ventura RCD, which runs a similar program in Ojai. Cressida also worked with NST and Goleta growers to display citrus banners in groves bordering busy residential roads. Fall area wide treatment windows begin the first week of September.

[Ventura County - Sandra Zwaal and Cressida Silver](#)

Ventura County's fall ACP area wide treatment begins mid-July. The annual ACP area wide treatment schedule and protocols remain routine and consistent with previous years. Treatment reminders have also been distributed. An ACP Task Force meeting is scheduled for July with a Grower Workshop in August.

In collaboration with the Ventura CAC and the CRB, both grower liaisons are preparing the annual grove and grower updates that make up the Ventura Co. citrus layer. The updates are taking longer than usual due to the high number of property sales, including commercial citrus properties.

[San Bernardino County – Sandra Zwaal](#)

The first fall ACP area wide treatment begins mid-July. An in-person ACP Task Force Grower Meeting is anticipated to occur mid to late July to kick off the upcoming ACP area wide treatments. In preparation for the upcoming ACP area wide treatments, Sandra is updating the grove and grower data file and collaborating with the county and CRB for an updated citrus layer. ACP treatment reminders will also be distributed after the data is updated. San Bernardino

county property sales, including properties with more than 25 citrus trees, have soared. Collecting updated ownership data is taking longer than in the past.

Riverside County – Tom Mullen

Tom reports that he will actively encourage all growers to participate in continued coordinated treatments within Hemet and Coachella Pest Control Districts as well as attempting to coordinate a majority of growers outside of aforementioned Districts to coordinate ACP treatments as appropriate.

The District has completed all red scale treatments within the Coachella Pest District.

Sweet Orange Scab (SOS) Incident Team has finalized protocols and are still awaiting USDA/CDFA final approval.

SOS Compliance agreements with packers, growers, and nurseries are in progress. Tom has reached out to growers to encourage acknowledgment of compliance agreements. he will also follow-up regularly to encourage compliance.

Lastly the Coachella District will continue their intensive tree removal program of citrus trees that are proximate to commercial groves and are difficult and costly to treat. There have not been any new HLB positive trees detected in Riverside County this month. To date the District has removed 3,589 citrus trees at 49 different locations.

A current contact list will be forwarded by end of week.

Imperial County – Curtis Pate

Curtis reports the ACP Canine Detection Service team worked for two weeks in the area early in June. This gave them very good information on where there were ACP and where they weren't. One orchard that had a breeding population that was treated with Movento on Dr. Rivera's recommendation. This population and subsequent finds in nearby blocks are under control.

The temperatures and (lack of) ACP populations are returning to normal for this time of year.

The detection dogs are expected to return and help find ACP more in the fall.

The PCD is considering pushing the systemic AWT applications to mid-late September due to generally later developing lemon crop. This will align better with organic treatments that need daytime temps to not exceed 95 degrees.

San Diego County – Sandra Zwaal

The fall ACP area wide treatment is expected to occur in July/August. The outcome of the application submitted by the University of California for a Cal Fire grant to remove dead and dying citrus trees is expected by the end of summer.

Grove information and contacts continue to be verified and updated by Sandra.

Neglected/Abandoned Groves

No changes reported by the CACs. The GLs continue to work with the growers and CAC staff to address any suspected abandoned groves.

| County | BOS Sup (Y/N) | Co Coun Sup (Y/N) | #Groves Report'd | #Groves Confrmd N/A | Total Acs (100 trees/ac) Confrmd | #owners contactd | #1st Letrs | #2nd Letrs | #3rd Letrs | #Heard | Hears won | #Hears lost | Groves Remvd | Total Acres Remvd | #Groves Rem'd | Acres Rem'd | #Groves Pndg | Total Acres Pndg | | | |
|-----------------|---------------------|----------------------------|---------------------|---------------------------|---|---------------------|---------------|---------------|---------------|----------|--------------|----------------|-----------------|-------------------------|------------------|----------------|-----------------|------------------------|---------------|--|---------------------------------|
| Fresno | | | | | | | | | | | | | | | | | | | | | |
| Kern | Y | Y | 3 | 1 | 60.36 | 1 | | | | | | | | | | | 1 | 60.36 | | | |
| Madera | | | | | | | | | | | | | | | | | | | | | |
| SLO | Y | Y | | | | | | | | | | | | | | | | | | | |
| Tulare | Y | Y | 88 | 88 | 1148 | 88 | 44 | | | | 1 | 1 | 0 | 66 | 908 | 9 | 79 | 13 | 161 | | |
| Subtotal | | | 91 | 89 | 1208.36 | 89 | 44 | | | | 1 | 1 | 0 | 66 | 908 | 9 | 79 | 14 | 221.36 | | |
| Imperial | Y | Y | 1 | 1 | 6 | 1 | | | | | | | | 1 | 6 | | | | | | |
| LA | | | | | | | | | | | | | | | | | | | | | |
| OC | | | | | | | | | | | | | | | | | | | | | |
| Coachella | | | 48 | 48 | 34.12 | 48 | | | | | | | 48 | 34.12 | | | | | | | Coachella is a PCD in Riverside |
| Riverside | Y | Y | 92 | | 264.81 | 43 | 43 | 43 | 11 | | | | 22 | | | | 35 | | | | |
| San Brdo | | | | | | | | | | | | | | | | | | | | | |
| SD | Y | Y | 108 | 61 | 1693 | 61 | 39 | 28 | 24 | | | | 37 | 774 | | 71 | 919 | | | | |
| Sta Barb | | | | | | | | | | | | | | | | | | | | | |
| Ventura | Y | Y | | | | | | | | | | | | | | | | | | | |
| Subtotal | | | 108 | 110 | 1997.93 | 153 | 82 | 71 | 35 | 0 | 0 | 0 | 108 | 814.1 | 0 | 71 | 954 | 0 | | | |
| Total | | | 340 | 199 | 3206.29 | 242 | 126 | 71 | 35 | 1 | 1 | 0 | 174 | 1722 | 9 | 150 | 968 | 221.36 | | | |



ACP CANINE DETECTION UPDATE

CPDPC OPERATIONS COMMITTEE

JULY 7, 2021

WHERE MAN'S BEST FRIEND FINDS IT!

PEST CONTROL – AGRICULTURE – FOOD SAFETY

USDA APHIS PPQ CANINE GROUP COOPERATIVE AGREEMENT

APRIL 1, 2021 - MARCH 31, 2021

- Primary purpose of this agreement is to provide support for the ACP Detector Canine Program in California during the transition from research to commercialization.
- A secondary purpose is to determine through formal experiments if detector canines can be used to detect psyllid feeding in citrus greenhouses after breaches.
- APHIS Program Managers are Greg Parra and Donald Seaver.
- The canine performance and health data will be overseen by the USDA National Detector Dog Training Center

PROVIDING FREE INSPECTION SERVICES TO GROWERS

- Emails announcing availability of canines for inspections have been distributed by pest control district managers and grower liaisons in Imperial, San Diego, and Ventura Counties.
- This week the dogs will be going to locations that were requested by growers in San Diego County, and next week to Santa Barbara County.

Data Department Update

Rick Dunn

CRB Director of Data and Information Management

7/7/2021

Data Management Department Activity,

July 7, 2021

Richard Dunn - Data, Information & Management Director

UCKAC GIS Facility

- Robert Johnson continues to assist with Statewide Citrus Layer maintenance and keeping the UCANR interactive web map updated with ACP, Biocontrol, CLas+ACP, and HLB detection data. <http://ucanr.edu/acpmap>

CRB Data Department

- Director is supporting Psyllid Management Area group activities and regional ACP / HLB Task Force groups in various counties with mapping support services. Revising the Statewide Commercial Citrus Layer as information is received. Tulare county is in progress. Configuration of Enterprise GIS is in progress.
- GIS Analyst Nancy Ying is conducting routine data scrubbing, quality control, and map production tasks.
- DATOC Coordinator Holly Deniston-Sheets is updating content on both the public and restricted DATOC websites as well as facilitating the expert panel as they address requests for analysis.
- Staff continue to support the CPDPP commercial grove trapping / sampling program. Supplying trappers with individualized GIS Trapsite and Samplesite layers updated weekly for use on their NOMADs. We produce and distribute ACP / HLB detection overview maps, PDR 800M maps, Biocontrol Workgroup activity maps, CPDPP Trapping progress maps, CPDPP Sampling progress maps, Trapping catch per day maps, Sampling close-up maps, and ArcGIS Online detection / collection heat maps, as well as monthly summary data, ACP situation data, and statistical reports.

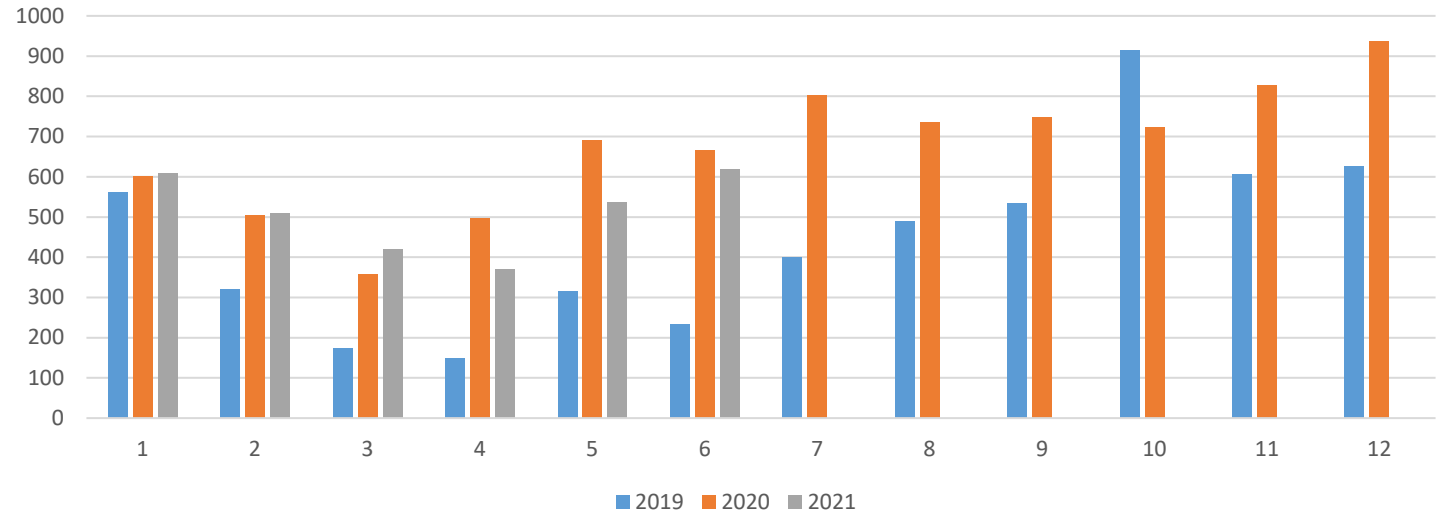
CPDPD Commercial Grove Sampling Program

- As of July 1 ,2021
- 9465 Samplesites (sentinel trees) in southern California groves are being inspected twice a year for the presence of suspect ACP
- When suspect ACP are observed, a sample is collected into alcohol and transferred to the CRB lab where it is tested for the presence of CLas
- In the first ½ of 2021 a total of 3,066 suspect ACP samples were collected containing 14,947 individual insects

- Only a single positive CLas+ACP sample has been collected by the grove sampling program to date*

*7/21/2020 near Woodcrest, Riverside county

Suspect ACP Collection Events



Suspect ACP Collected for Testing

