



Huanglongbing / Asian Citrus Psyllid Program - Proclamation of an Emergency Program Map Orange County PEP (2023-10) - Portions of Orange County - Part 1

-  Treatment Area
-  Environmental Sensitive Area:
Treatment Mitigation in Place

City or Census-Designated Place Within Treatment Area

-  Anaheim
-  Orange

0 0.25 0.5 Miles





Huanglongbing / Asian Citrus Psyllid Program - Proclamation of an Emergency Program Map Orange County PEP (2023-10) - Portions of Orange County - Part 2

-  Treatment Area
-  Environmental Sensitive Area:
Treatment Mitigation in Place

City or Census-Designated Place Within Treatment Area

 Anaheim

0 0.25 0.5 Miles


CITRUS PEST & DISEASE
PREVENTION DIVISION

 **cdfa** CALIFORNIA DEPARTMENT OF
FOOD & AGRICULTURE



Huanglongbing / Asian Citrus Psyllid Program - Proclamation of an Emergency Program Map Orange County PEP (2023-10) - Portions of Orange County - Part 3

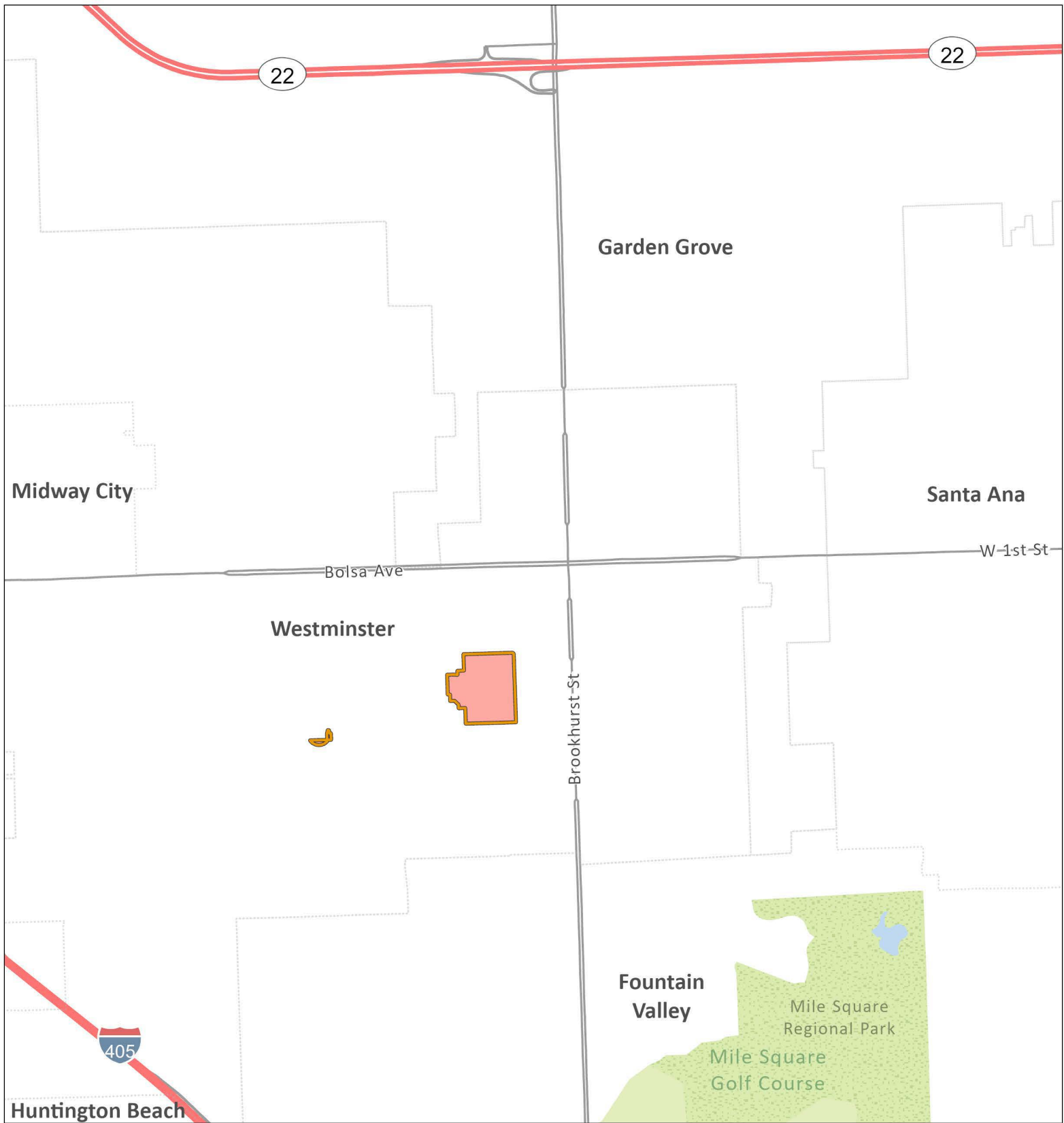
-  Treatment Area
-  Environmental Sensitive Area:
Treatment Mitigation in Place

City or Census-Designated Place Within Treatment Area

 North Tustin

0 0.5 1 Miles





Huanglongbing / Asian Citrus Psyllid Program - Proclamation of an Emergency Program Map

Orange County PEP (2023-10) - Portions of Orange County - Part 4

-  Treatment Area
-  Environmental Sensitive Area:
Treatment Mitigation in Place

City or Census-Designated Place Within Treatment Area

 Westminister

0 0.25 0.5 Miles

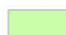




Huanglongbing / Asian Citrus Psyllid Program - Proclamation of an Emergency Program Map Orange County PEP (2023-10) - Portions of Orange County - Part 5

-  Treatment Area
-  Environmental Sensitive Area:
Treatment Mitigation in Place

City or Census-Designated Place Within Treatment Area

 Irvine

0 0.25 0.5 Miles



CITRUS PEST & DISEASE
PREVENTION DIVISION

 CALIFORNIA DEPARTMENT OF
FOOD & AGRICULTURE



Huanglongbing / Asian Citrus Psyllid Program - Proclamation of an Emergency Program Map Orange County PEP (2023-10) - Portions of Orange County - Part 6

-  Treatment Area
-  Environmental Sensitive Area:
Treatment Mitigation in Place

- City or Census-Designated Place Within Treatment Area
-  Huntington Beach

0 0.25 0.5 Miles

