

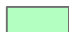
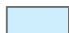


# Huanglongbing / Asian Citrus Psyllid Program - Proclamation of an Emergency Program Map Orange County (2023-07) - Portion of Orange County - Part 1



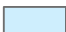
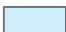
-  Treatment Area
  -  Environmental Sensitive Area: Treatment Mitigation in Place
  -  Buena Park
  -  Fullerton
- City or Census-Designated Place Within Treatment Area

0 0.25 0.5 Mi.





# Huanglongbing / Asian Citrus Psyllid Program - Proclamation of an Emergency Program Map Orange County (2023-07) - Portion of Orange County - Part 2



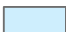
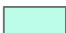
-  Treatment Area
-  Environmental Sensitive Area: Treatment Mitigation in Place
-  City or Census-Designated Place Within Treatment Area
-  Fullerton

0 0.25 0.5  
Mi.



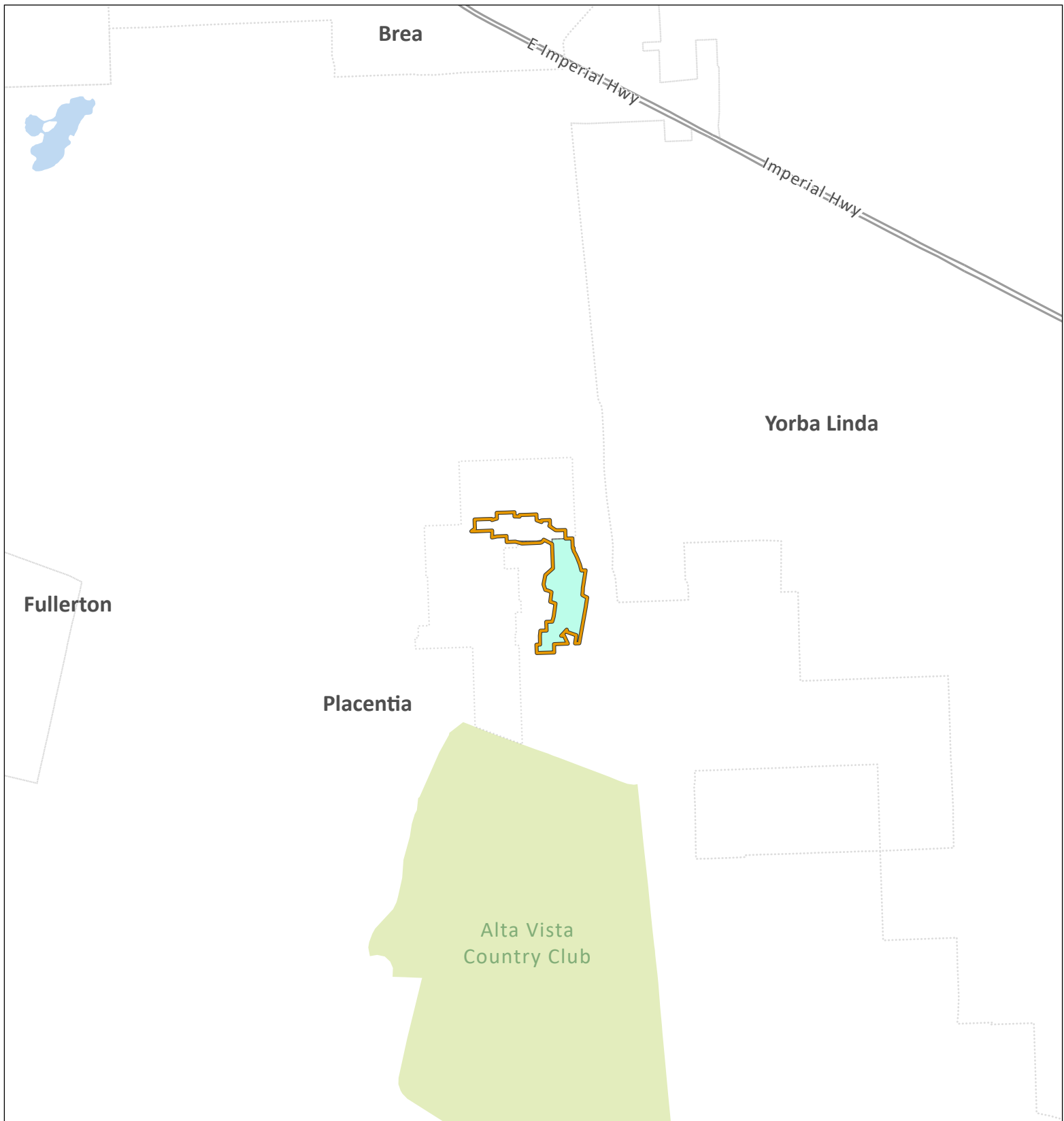


# Huanglongbing / Asian Citrus Psyllid Program - Proclamation of an Emergency Program Map Orange County (2023-07) - Portion of Orange County - Part 3

-  Treatment Area
-  Environmental Sensitive Area: Treatment Mitigation in Place
-  Fullerton
-  Placentia

0 0.25 0.5 Mi.





# Huanglongbing / Asian Citrus Psyllid Program - Proclamation of an Emergency Program Map Orange County (2023-07) - Portion of Orange County - Part 4

City or Census-Designated Place Within Treatment Area

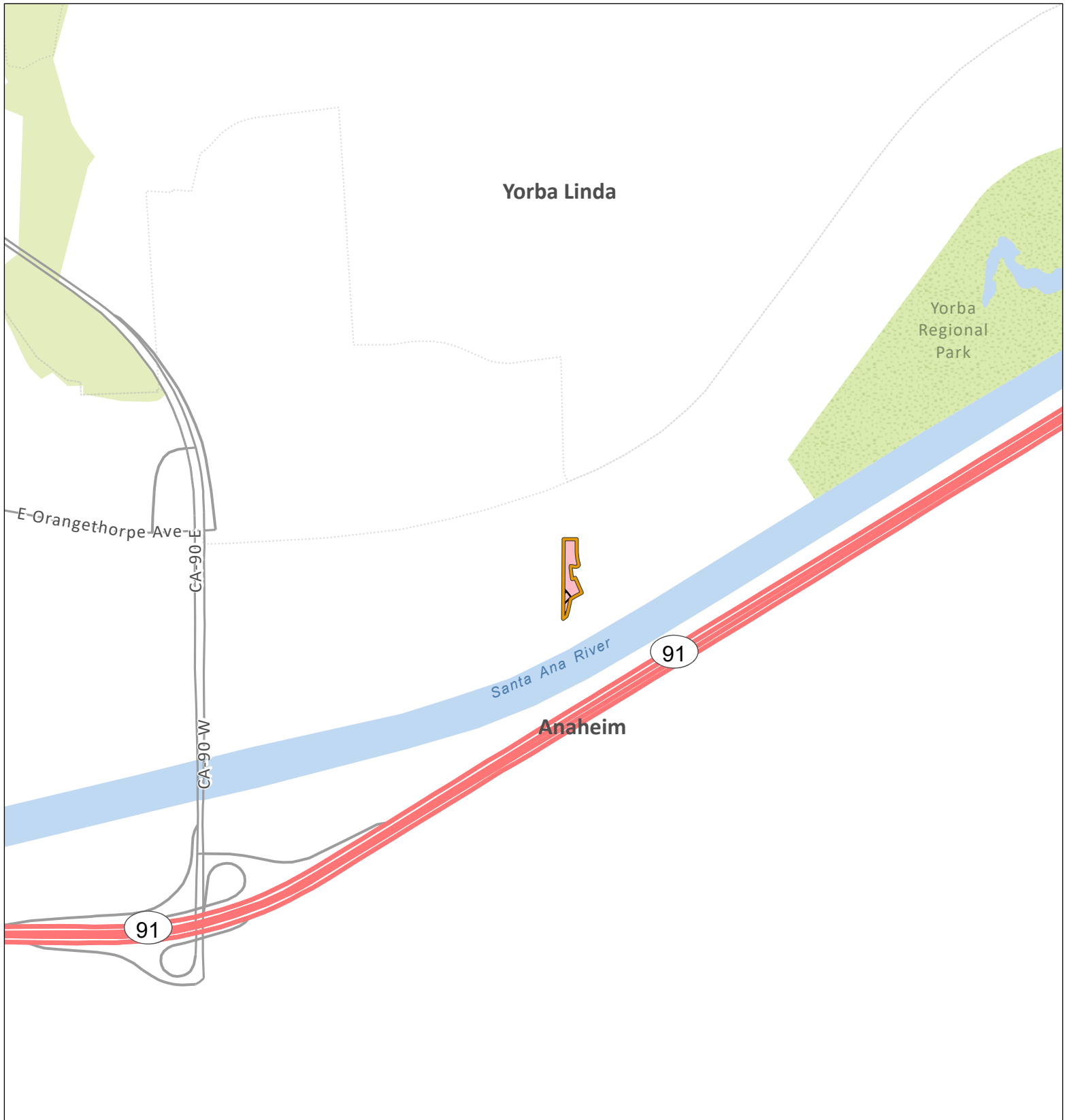
0 0.25 0.5 Mi.

 Treatment Area


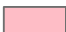

 Placentia

 Environmental Sensitive Area:  
Treatment Mitigation in Place



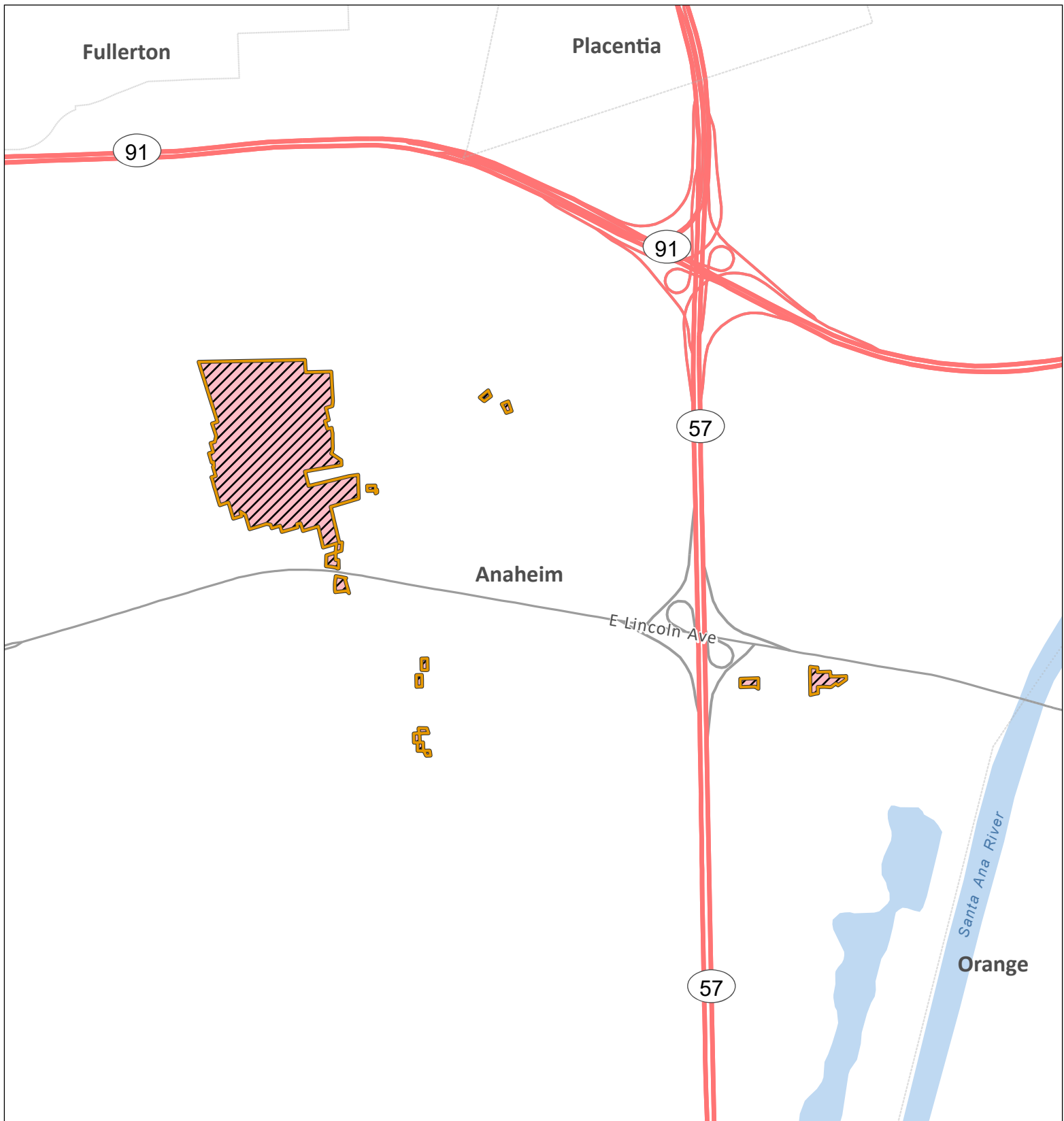


# Huanglongbing / Asian Citrus Psyllid Program - Proclamation of an Emergency Program Map Orange County (2023-07) - Portion of Orange County - Part 5

-  Treatment Area
-  Anaheim
-  Environmental Sensitive Area:  
Treatment Mitigation in Place
- City or Census-Designated Place Within Treatment Area

0 500 1,000  
Ft.





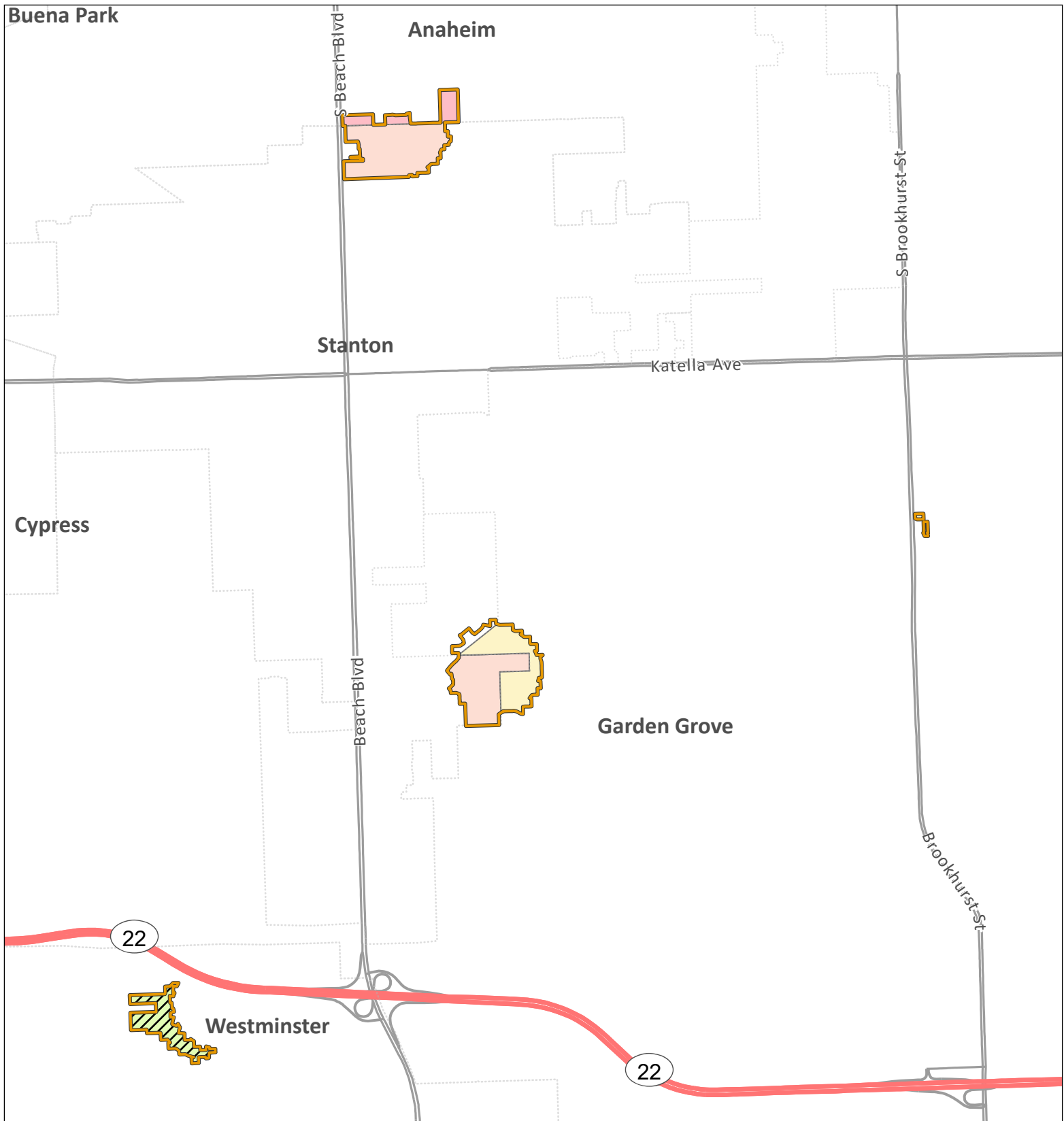
# Huanglongbing / Asian Citrus Psyllid Program - Proclamation of an Emergency Program Map Orange County (2023-07) - Portion of Orange County - Part 6

Treatment Area
  City or Census-Designated Place Within Treatment Area
  Anaheim



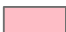
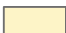

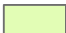
Environmental Sensitive Area:  
Treatment Mitigation in Place

0 0.25 0.5 Mi.



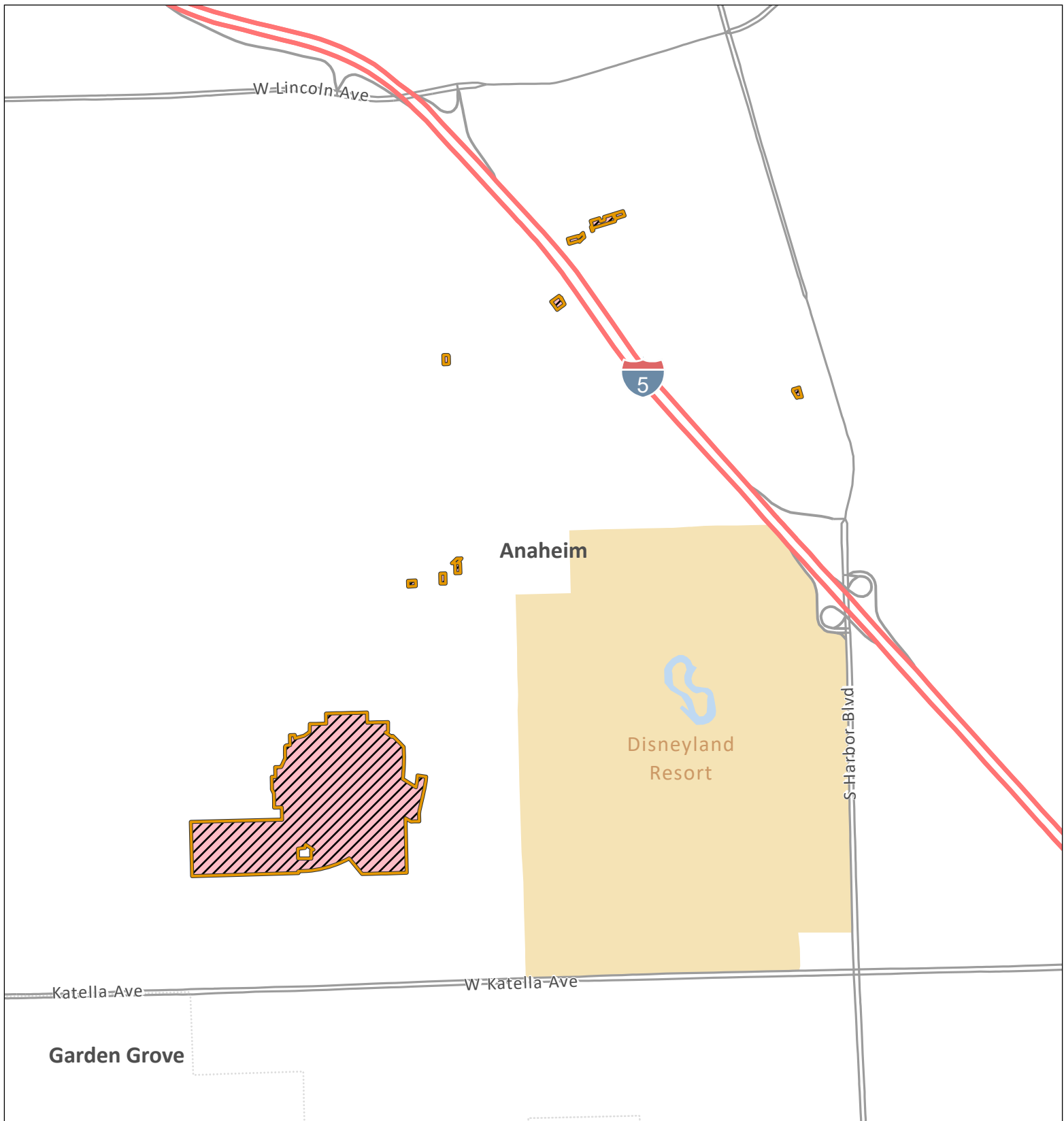


# Huanglongbing / Asian Citrus Psyllid Program - Proclamation of an Emergency Program Map Orange County (2023-07) - Portion of Orange County - Part 7

- |  |  |
|--|--|
|  Treatment Area  | City or Census-Designated Place Within Treatment Area  |
|  Environmental Sensitive Area: Treatment Mitigation in Place |  Anaheim      |
|  |  Garden Grove |
|  |  Stanton      |
|  |  Westminster  |

0 0.25 0.5  
Mi.





# Huanglongbing / Asian Citrus Psyllid Program - Proclamation of an Emergency Program Map Orange County (2023-07) - Portion of Orange County - Part 8

City or Census-Designated Place Within Treatment Area

0 0.25 0.5 Mi.

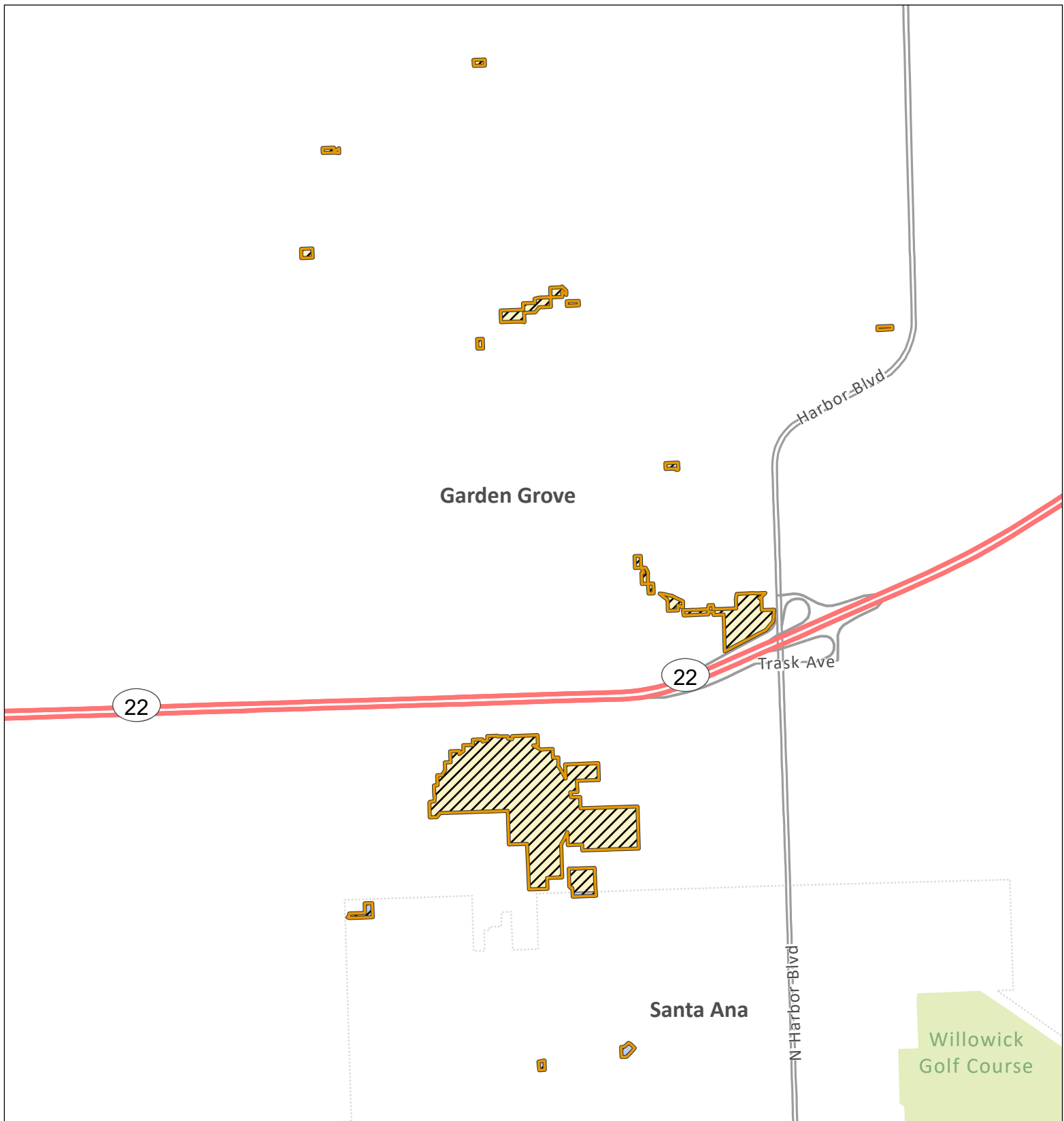
 Treatment Area

 Anaheim



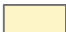

 Environmental Sensitive Area:  
Treatment Mitigation in Place





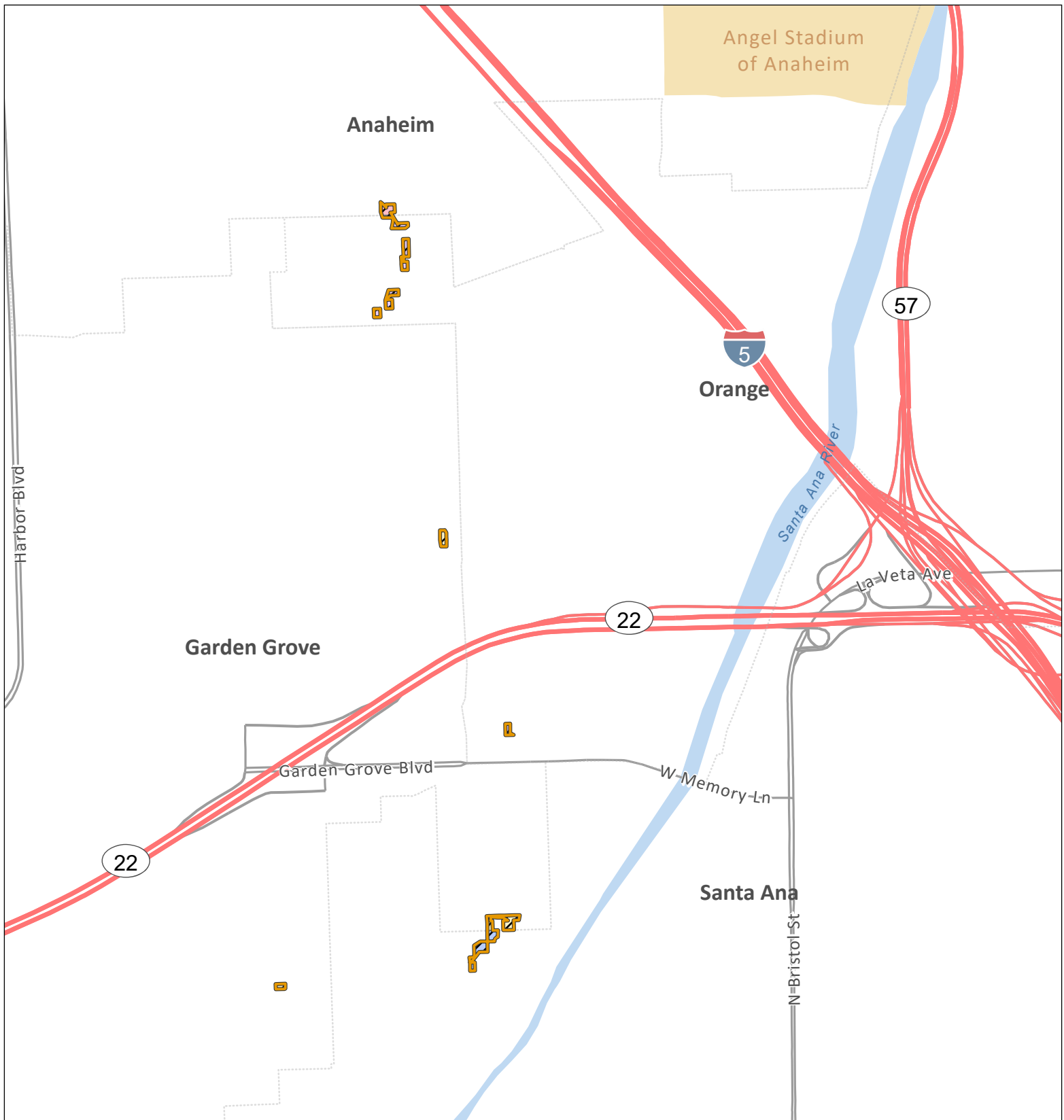


# Huanglongbing / Asian Citrus Psyllid Program - Proclamation of an Emergency Program Map Orange County (2023-07) - Portion of Orange County - Part 9

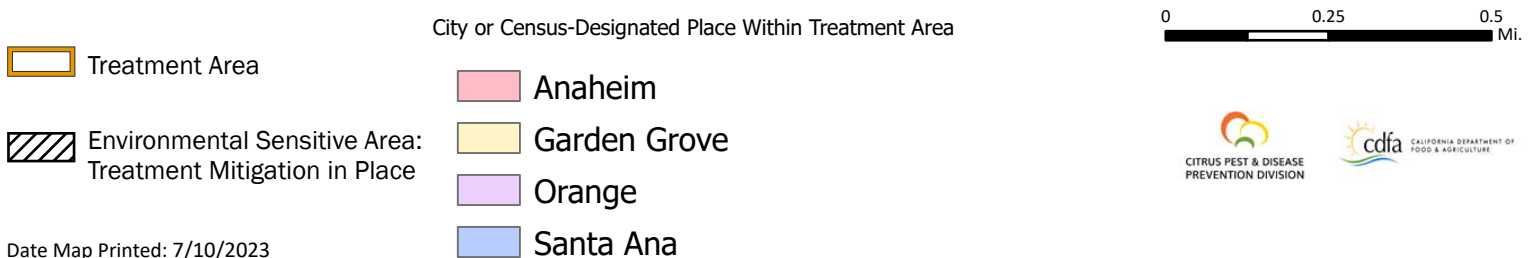
-  Treatment Area
  -  Environmental Sensitive Area: Treatment Mitigation in Place
  -  Garden Grove
  -  Santa Ana
- City or Census-Designated Place Within Treatment Area

0 0.25 0.5 Mi.





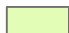



# Huanglongbing / Asian Citrus Psyllid Program - Proclamation of an Emergency Program Map Orange County (2023-07) - Portion of Orange County - Part 10



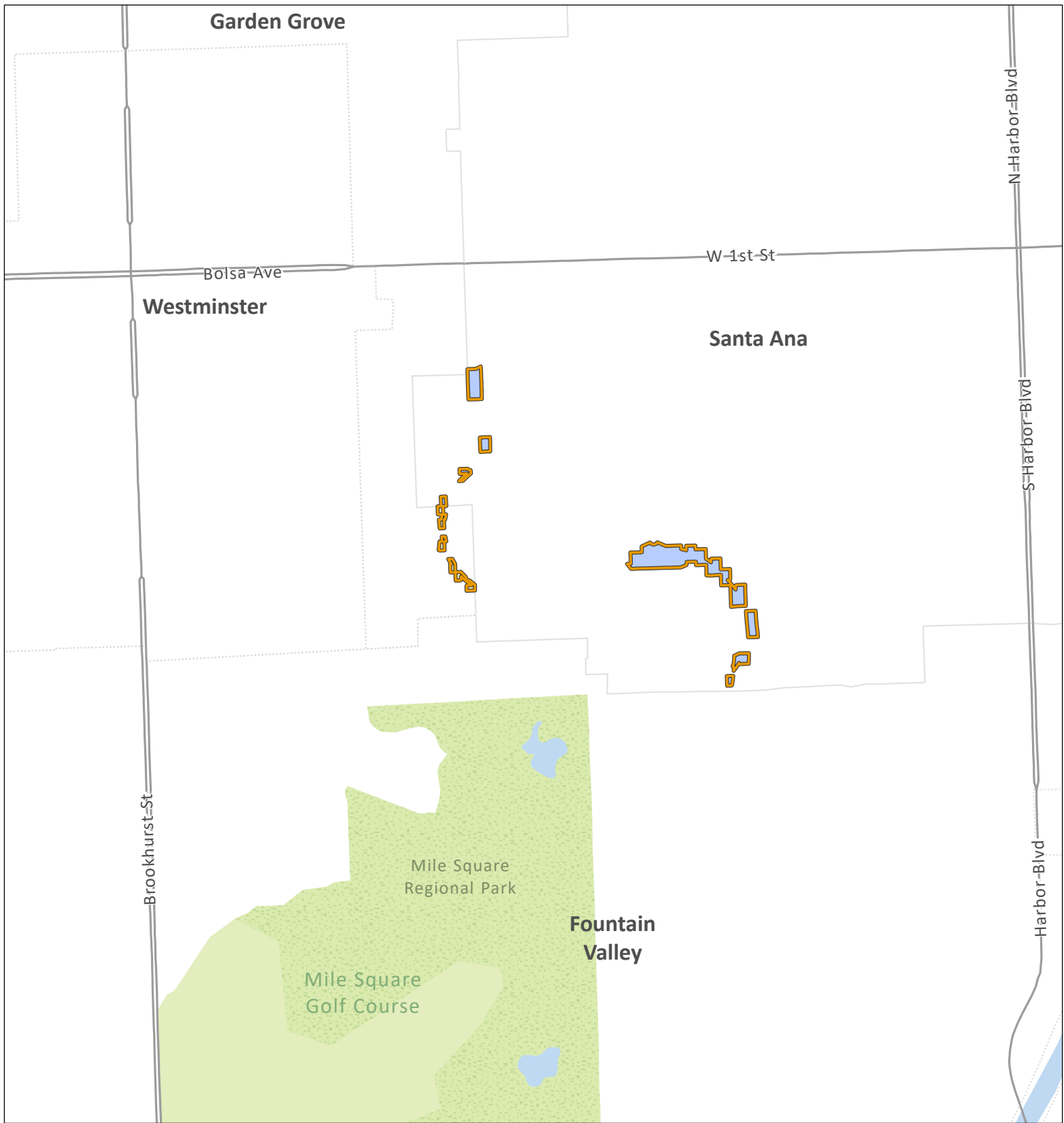


# Huanglongbing / Asian Citrus Psyllid Program - Proclamation of an Emergency Program Map Orange County (2023-07) - Portion of Orange County - Part 11



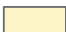

-  Treatment Area
-  Midway City
-  Westminister
-  Environmental Sensitive Area: Treatment Mitigation in Place
- City or Census-Designated Place Within Treatment Area

0 0.25 0.5 Mi.





## Huanglongbing / Asian Citrus Psyllid Program - Proclamation of an Emergency Program Map Orange County (2023-07) - Portion of Orange County - Part 12




-  Treatment Area
-  Environmental Sensitive Area:  
Treatment Mitigation in Place
- City or Census-Designated Place Within Treatment Area
-  Garden Grove
-  Santa Ana

0 0.25 0.5  
Mi.





# Huanglongbing / Asian Citrus Psyllid Program - Proclamation of an Emergency Program Map Orange County (2023-07) - Portion of Orange County - Part 13

-  Treatment Area
-  Fountain Valley
-  Environmental Sensitive Area: Treatment Mitigation in Place

0 0.25 0.5 Mi.

