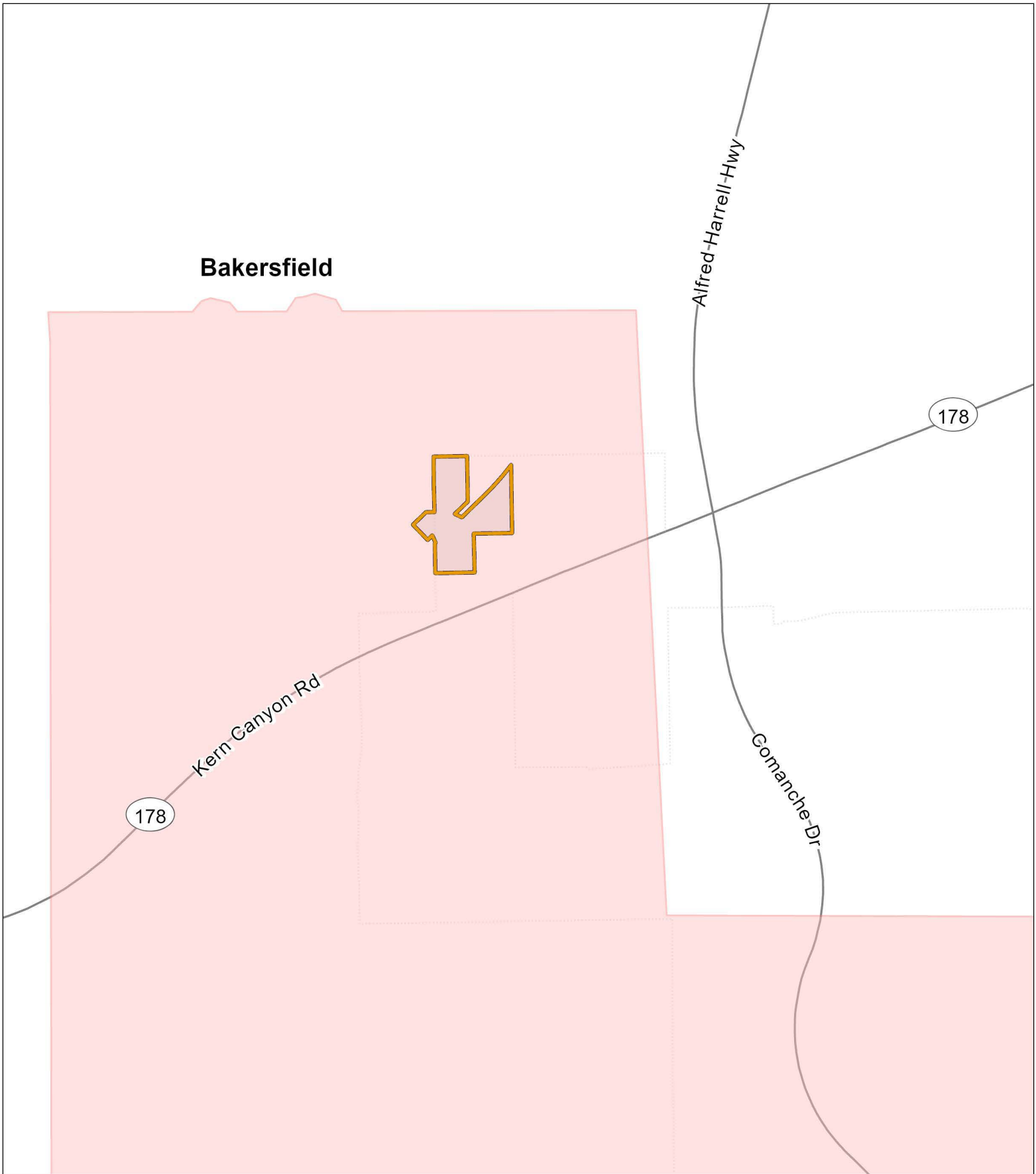
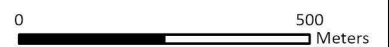


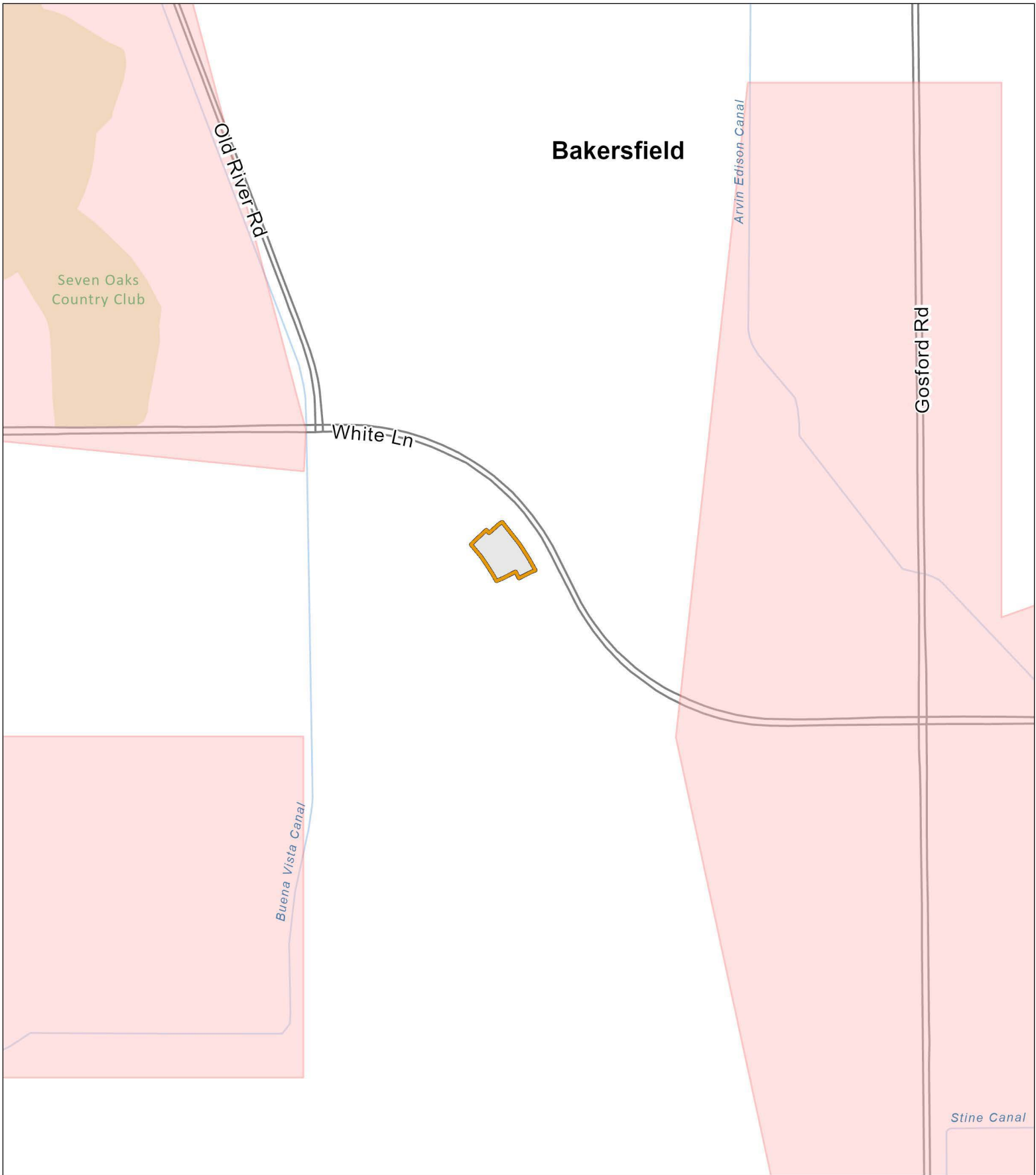
Bakersfield



Asian Citrus Psyllid Program - Proclamation of an Emergency Program Map Bakersfield - Kern County (2022-15) - Part 1

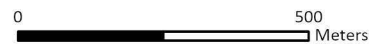
-  Treatment Area
-  Environmentally Sensitive Area: Treatment Mitigation in Place

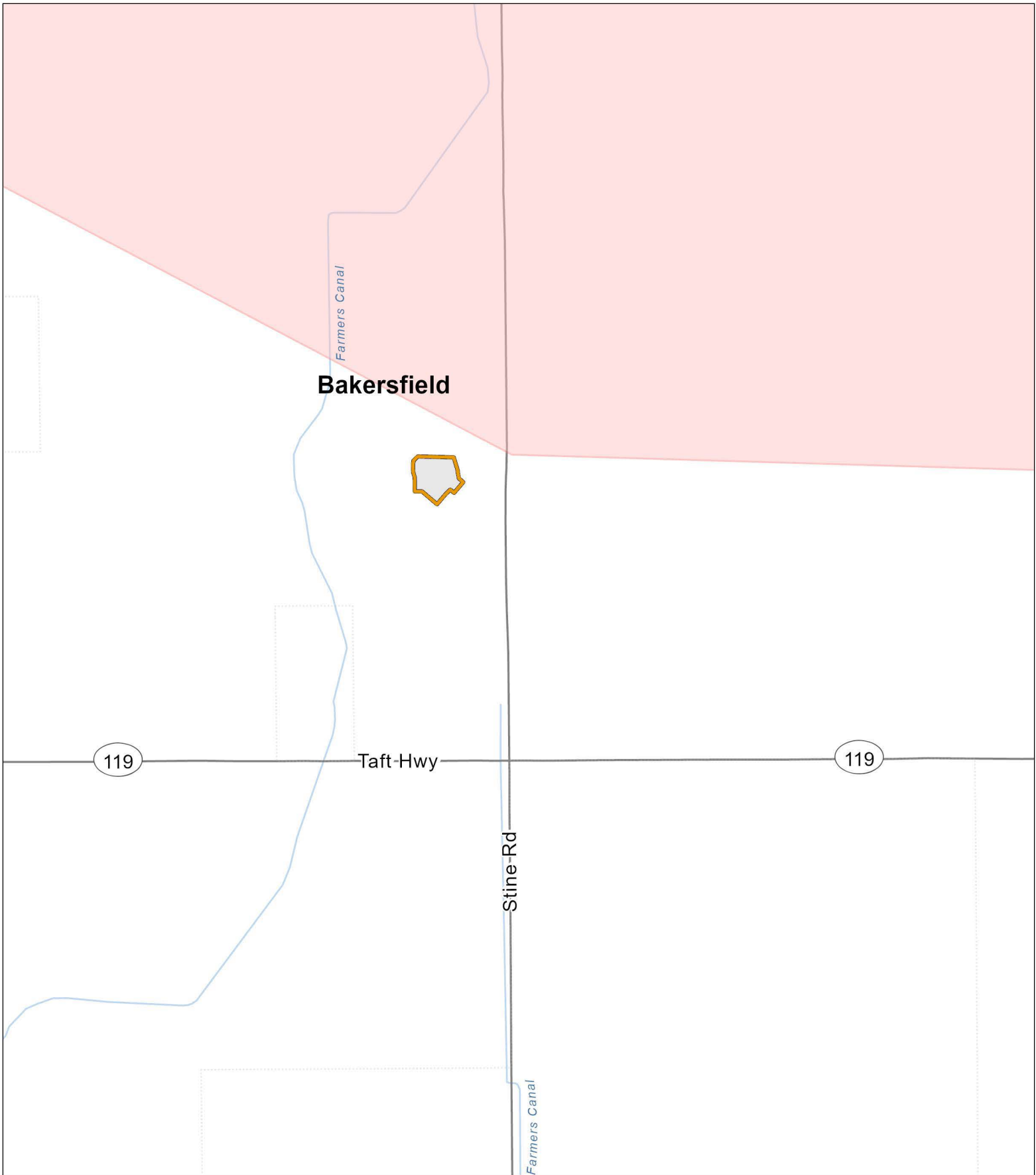




**Asian Citrus Psyllid Program - Proclamation of an Emergency Program Map
Bakersfield - Kern County (2022-15) - Part 2**

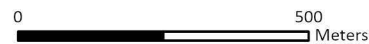
- Treatment Area
- Environmentally Sensitive Area: Treatment Mitigation in Place

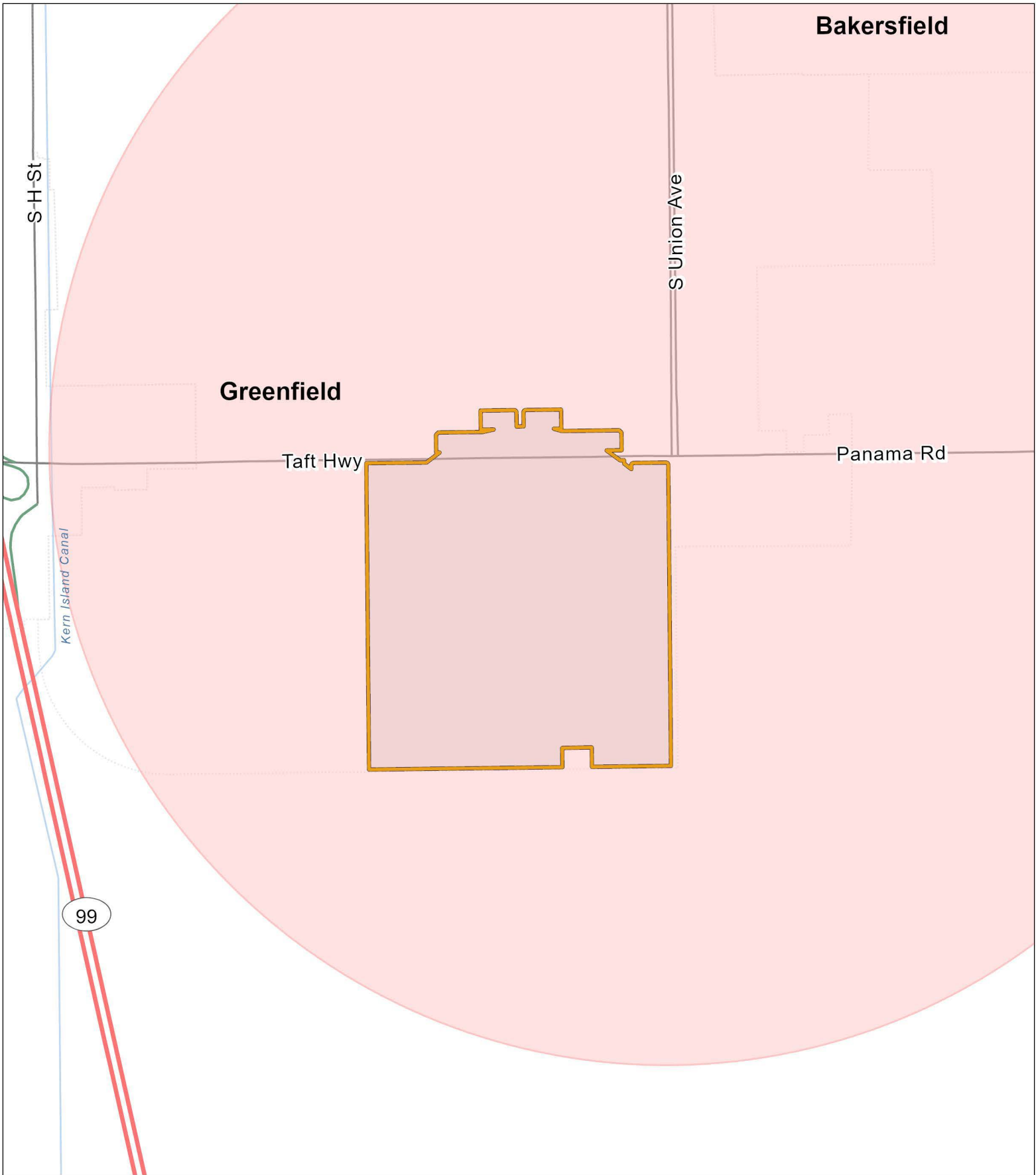




Asian Citrus Psyllid Program - Proclamation of an Emergency Program Map
 Bakersfield - Kern County (2022-15) - Part 3

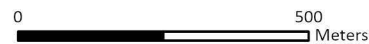
-  Treatment Area
-  Environmentally Sensitive Area: Treatment Mitigation in Place

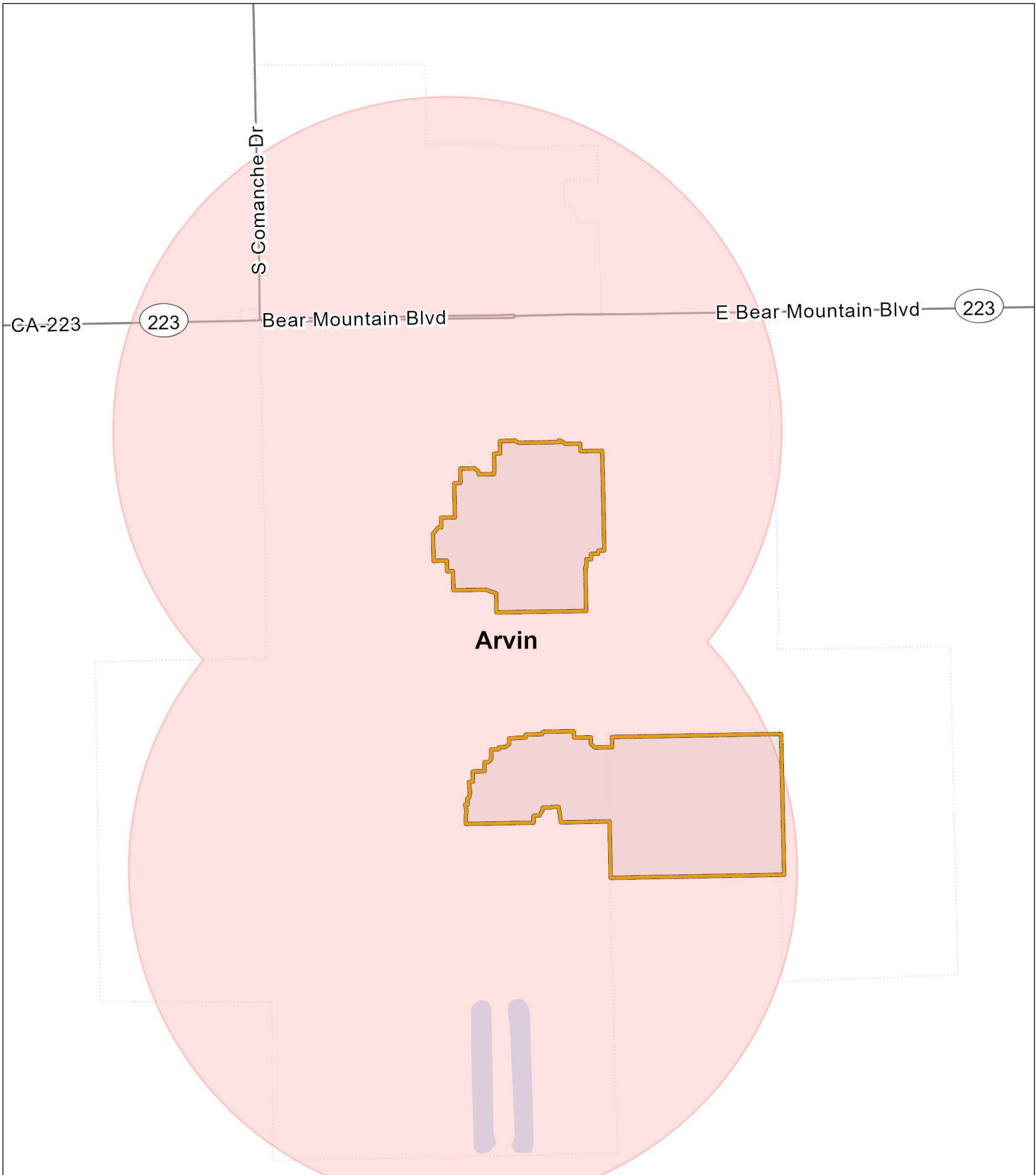




Asian Citrus Psyllid Program - Proclamation of an Emergency Program Map
 Bakersfield, Greenfield - Kern County (2022-15) - Part 4

-  Treatment Area
-  Environmentally Sensitive Area: Treatment Mitigation in Place

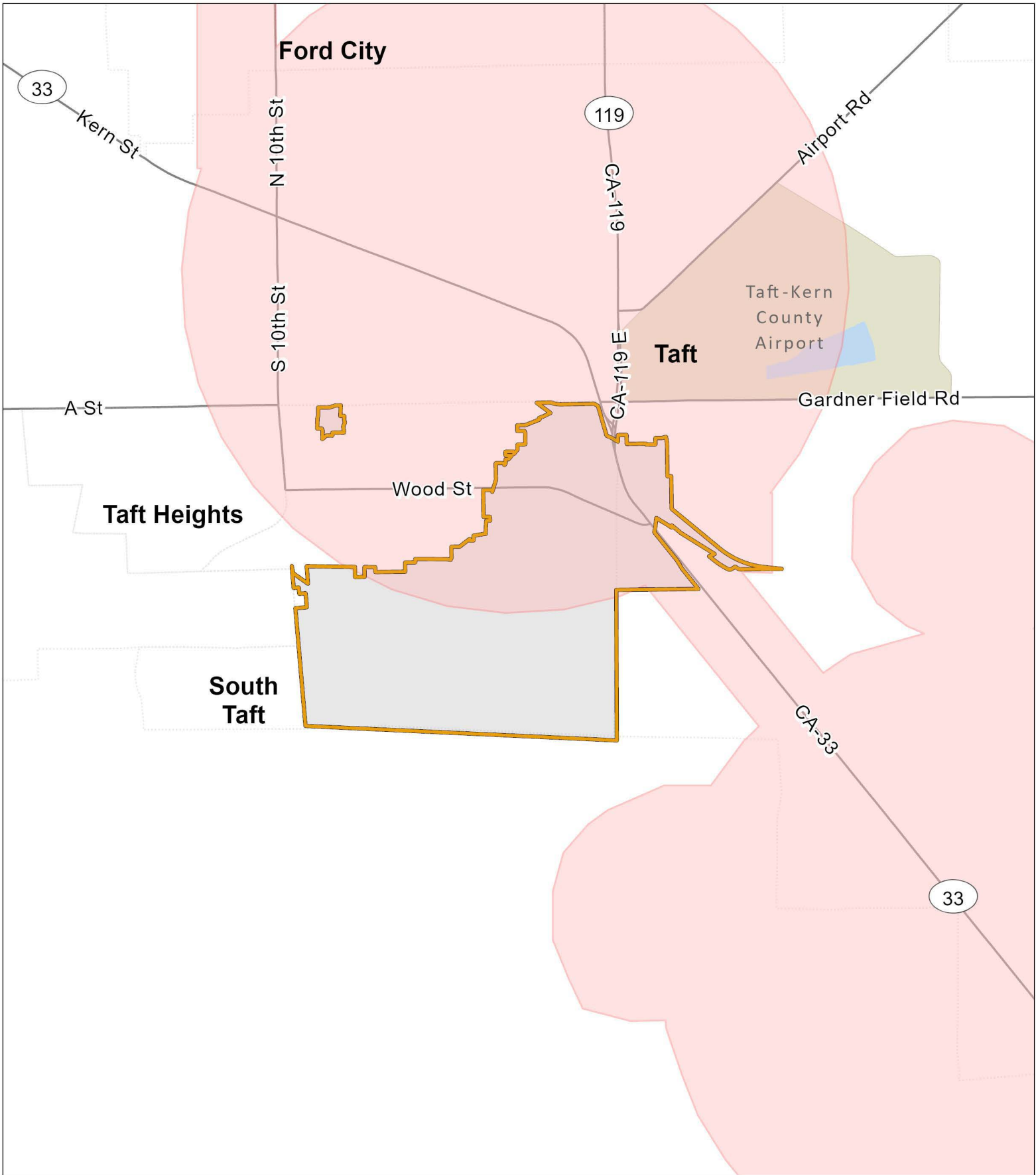




Asian Citrus Psyllid Program - Proclamation of an Emergency Program Map Arvin - Kern County (2022-15) - Part 5

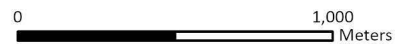
- Treatment Area
- Environmentally Sensitive Area: Treatment Mitigation in Place

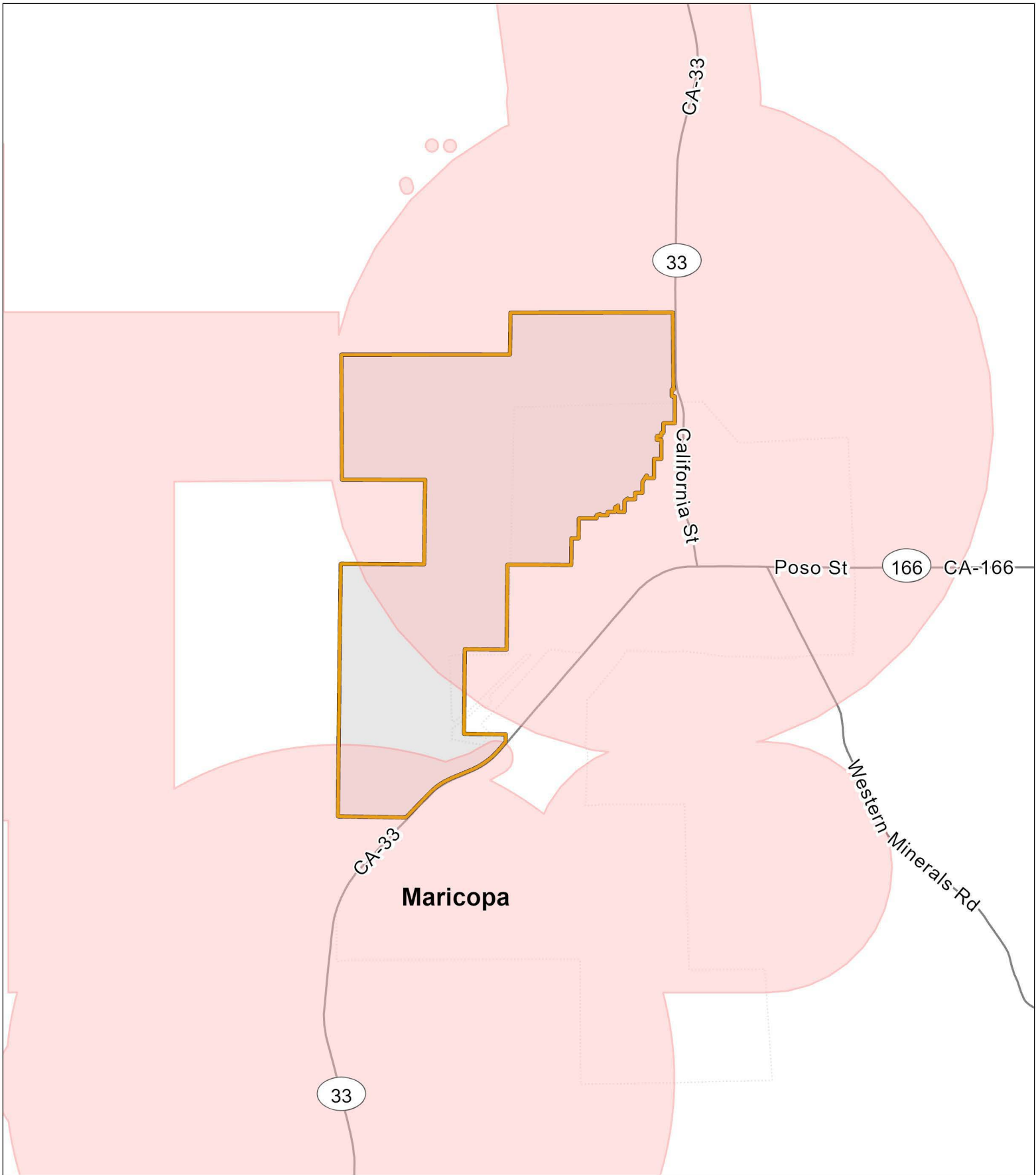
0 1,000
Meters



Asian Citrus Psyllid Program - Proclamation of an Emergency Program Map
 South Taft, Taft - Kern County (2022-15) - Part 6

-  Treatment Area
-  Environmentally Sensitive Area: Treatment Mitigation in Place





Asian Citrus Psyllid Program - Proclamation of an Emergency Program Map
 Maricopa - Kern County (2022-15) - Part 7

-  Treatment Area
-  Environmentally Sensitive Area: Treatment Mitigation in Place

