

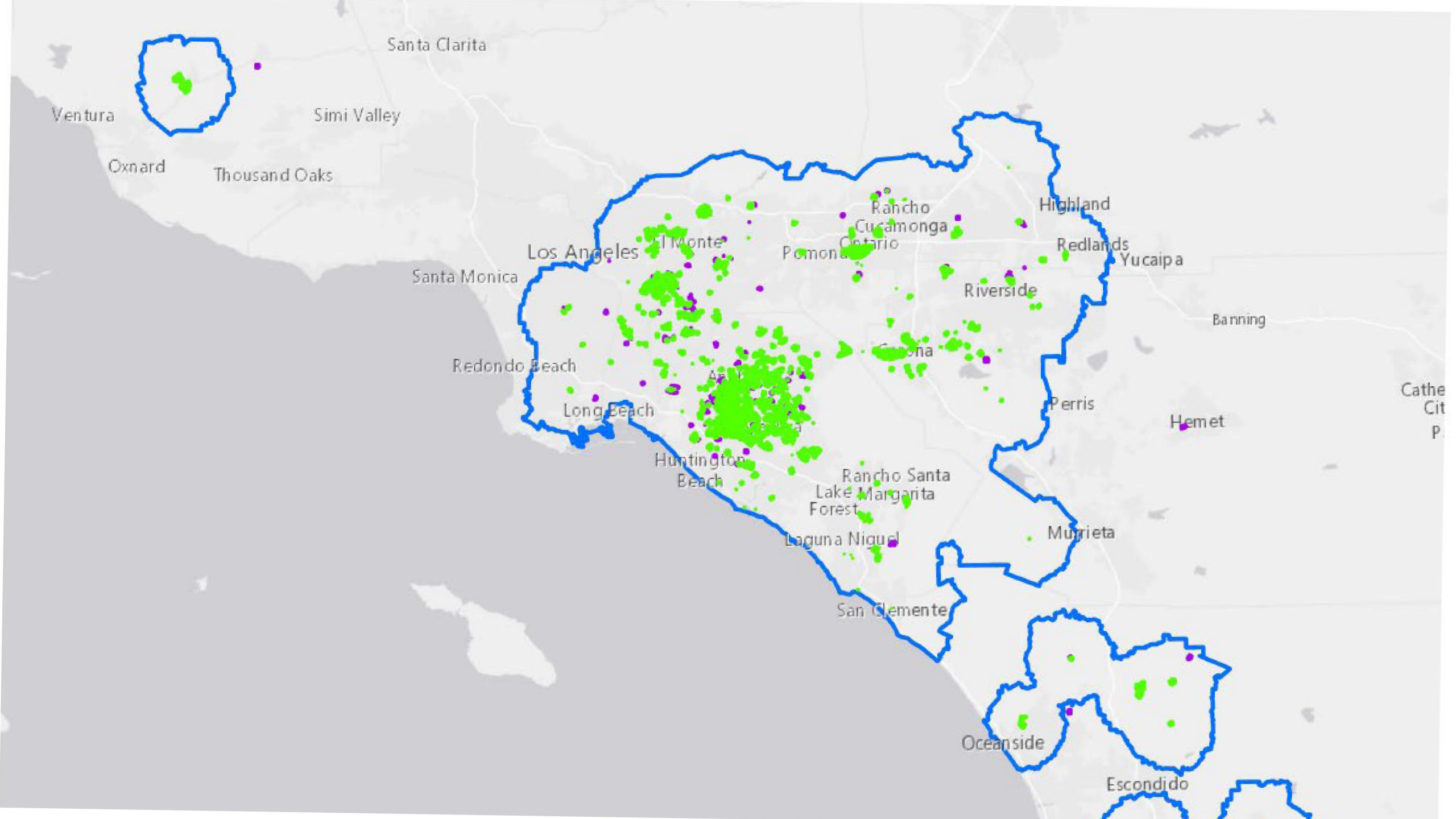
HLB Detection, Delimitation, and Tree Removal Updates

Southern District

May 20, 2026

Detection and Delimitation Survey Updates

- Detected two HLB positive trees in Pomona, Los Angeles County.
- Additional positive trees continue to be detected in Ladera Ranch and San Juan Capistrano.
- Multiple HLB-positive trees detected in Riverside, Riverside County.
 - A few of these detections are in closer proximity to commercial groves.
- Delimitation survey was completed in Ladera Ranch, Loma Linda, and Pomona.
- Multiple rounds of abatement warrants were executed in Orange, Los Angeles, and Riverside counties to survey, treat, and remove HLB-positive trees from properties that had previously refused compliance.



HLB Delimitation Survey- 250 meters

Areas	Properties Surveyed	No-Host Properties	Refusals/Pending
Riverside	359	167	6/15
Loma Linda	114	30	2/6
Ladera Ranch	94	62	6/13
San Juan Capistrano	336	331	0/0

HLB Delimitation Survey- 50 meters

Areas	Properties Surveyed	No-Host Properties	Refusals/Pending
-------	---------------------	--------------------	------------------

Delimitation Survey - Find Sites

Areas	Total Properties	Properties Surveyed	No-Host Properties	Refusals	No Contact
Anaheim	2	2	0	0	0
				0	
Santa Ana	3	3	0	0	0
Orange	6	6	0	0	0
Jurupa Valley	2	1	1	0	0
Grand Terrace	10	5	5	0	0

HLB Positive Trees (March-April)

County	Detected	Removed	Cumulative Pending
Los Angeles	4	40	0
	49	69	9
San Bernardino	2	5	9
Riverside	43	13	41
San Diego	0	0	0

Positive Trees Comparison (January-April)

County	Year 2025	Year 2026	Percentage Change %
Los Angeles	121	15	-88%
	327		
	50	4	-92%
	61		
San Diego	4	2	-50%



California Department of Food & Agriculture Plant Pest Diagnostics Center HLB Testing Program 2026

Total number of plant and ACP samples per month – Fig. 1a, Fig1b
Number of samples tested for HLB per year from 2008 –2026 – Fig. 2
Tally of positive detections by county and city – Tables 1a-1d.
Number of detections yearly from 2012-2026– Table 2

If you have any questions, please call or email me at 916-738-6710 lucita.kumagai@cdfa.ca.gov.

Fig 1a. 2026 -
Total number of plant and ACP samples submitted per month.

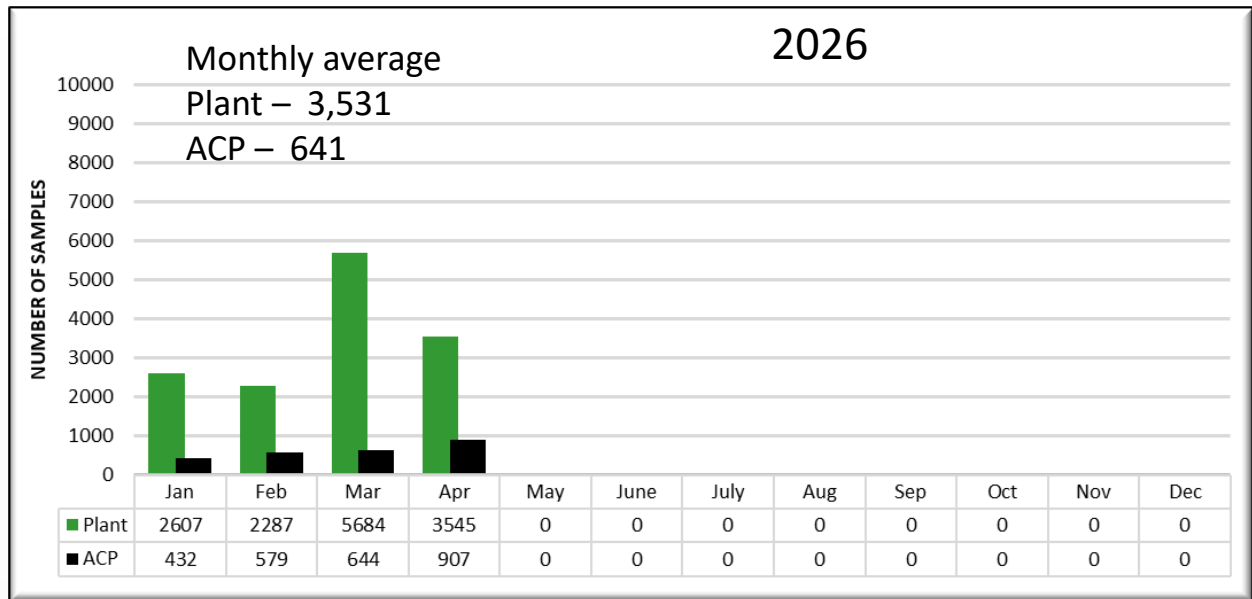


Fig 1b. 2025 -
Total number of plant and ACP samples submitted per month.

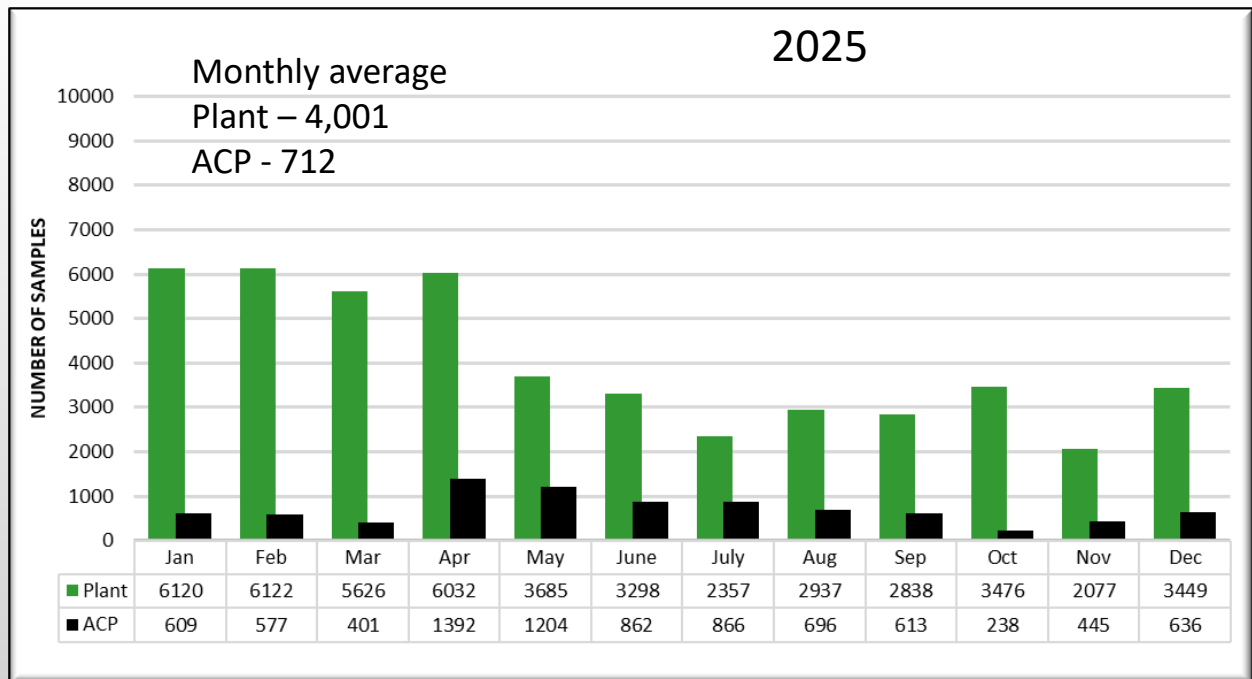
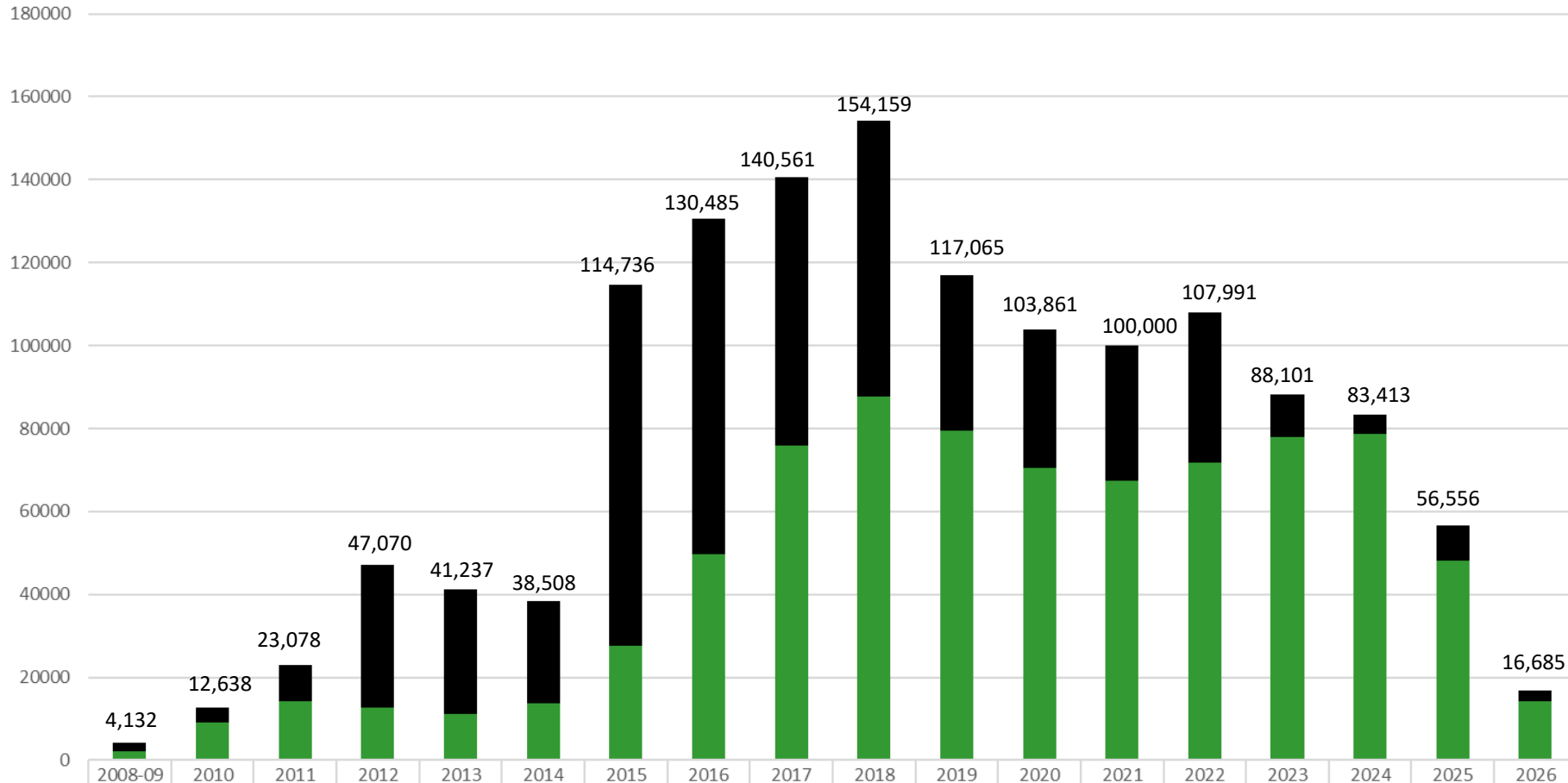


Fig 2. Number of samples tested for HLB per year from 2008 – 2026.



	2008-09	2010	2011	2012	2013	2014	2015	2016	2017	2018	2019	2020	2021	2022	2023	2024	2025	2026
■ ACP CPDP									94	4020	0	0	0	0	0	0	0	0
■ ACP AZ Univ								7881	11896	10079	4310	205	0	0	0	0	0	0
■ ACP CRB			7740	19380	23222	22568	0	0	5085	45550	33247	32920	32507	35949	10215	4794	8459	2557
■ ACP CDFA	1923	3527	1105	15032	6872	2300	87052	72832	47619	6698	133	130	29	165	39	31	80	5
■ Plant CRB													641	3172	5065	5007	4667	525
■ Plant CDFA	2209	9111	14233	12658	11143	13640	27684	49772	75867	87812	79375	70606	66822	68706	72782	73581	43350	13598

Combined total of plant and ACP samples tested from 2008 – 2026 is 1,380,276

Tables 1a-1d. Tally of positive sites, positive trees, and CLas+ ACP samples by city and county as of 5/8/2026.

2012-2026	# Sites	# Trees	# ACP samples
Grand Total	6622	10577	961

Orange			
City	# Sites	# Trees	# ACP samples
Garden Grove	767	1367	127
Santa Ana	782	1324	101
Anaheim	1083	1921	178
Westminster	371	637	23
Orange	363	557	48
Tustin	58	80	10
Fountain Valley	15	22	3
Huntington Beach	27	30	2
Placentia	93	128	15
La Habra	13	20	1
Fullerton	20	24	10
Yorba Linda	83	214	17
Irvine	172	223	5
Costa Mesa	113	159	4
Brea	35	57	1
Buena Park	10	17	2
Cypress	6	2	5
Stanton	5	6	1
Midway City	12	26	0
Los Alamitos	1	0	1
Villa Park	3	7	0
Newport Beach	4	4	0
Mission Viejo	47	57	7
Lake Forest	3	2	2
Coto De Caza	5	6	1
Rancho Santa Margarita	1	4	0
San Clemente	1	1	0
Dana Point	1	1	0
San Juan Capistrano	5	16	2
Laguna Niguel	4	4	0
Total	4103	6916	566

Los Angeles			
City	# Sites	# Trees	# ACP samples
Whittier	238	290	52
Pico Rivera	370	566	77
Montebello	82	113	2
San Gabriel	93	125	9
Rosemead	50	69	7
Paramount	28	35	5
La Mirada	53	72	6
La Puente	58	70	9
Norwalk	16	13	5
Cerritos	7	9	5
Hacienda Heights	5	5	1
Lakewood	5	6	0
Duarte	177	271	6
El Monte	73	106	8
South El Monte	22	43	4
Alhambra	6	7	0
Temple City	12	11	2
Compton	1	1	0
Glendora	1	0	1
South Gate	10	10	6
Long Beach	13	23	3
Los Angeles	8	6	2
Downey	28	35	5
Carson	4	3	1
Monrovia	45	65	1
Rowland Heights	2	0	2
Pomona	27	35	2
Artesia	7	8	0
Bellflower	6	7	0
Monterey Park	1	1	0
West Covina	2	1	1
City of Industry	1	2	0
Claremont	1	0	1
Santa Fe Springs	2	1	1
Azusa	8	16	2
Covina	2	1	1
Commerce	4	5	0
San Dimas	1	1	0
Irwindale	1	1	1
Total	1470	2033	228

Riverside			
City	# Sites	# Trees	# ACP samples
Corona	281	432	41
Riverside	131	202	32
Eastvale	2	2	0
Jurupa Valley	40	68	4
Moreno Valley	1	1	0
Norco	6	11	0
Hemet	1	0	1
Perris	2	2	0
Murrieta	1	1	2
Total	465	719	80
San Bernardino			
Rancho Cucamonga	13	28	5
Montclair	23	23	9
Colton	6	11	3
San Bernardino	3	2	1
Ontario	334	517	23
Fontana	30	48	9
Chino	23	33	4
Loma Linda	5	4	1
Grand Terrace	1	2	1
Total	438	668	56
San Diego			
Fallbrook	2	1	1
Oceanside	4	9	4
Pauma Valley	1	0	1
Vista	1	0	1
San Diego	47	75	0
Valley Center	10	24	2
Ramona	1	2	1
Total	66	111	10
Ventura			
Santa Paula	77	130	18
Fillmore	1	0	1
Total	78	130	19
Imperial			
Imperial	1	0	1
Total	1	0	1
Santa Barbara			
Santa Barbara	1	0	1
Total	1	0	1

Table 2. Positive detections reported as of 5/8/2026

Positive C Las Detections			
Year	# Sites	# Trees	# ACP samples
2012	1	1	1
2013	0	0	0
2014	0	0	0
2015	10	10	4
2016	13	20	2
2017	295	363	144
2018	422	652	55
2019	532	722	75
2020	362	475	44
2021	385	654	63
2022	884	1391	180
2023	1817	2958	215
2024	1226	2236	99
2025	578	900	46
2026	97	195	33
Total	6622	10577	961

2025 Cycle 2

Survey Complete

4

of 33 allocated counties

Property Surveyed: 13.2k

Entomology PDR: 2.5k

Plant Sample PDR: 3.3k

Multi-Pest Status

- Completed
- In Progress
- Not Started

Multi-Pest Survey Staff / Office



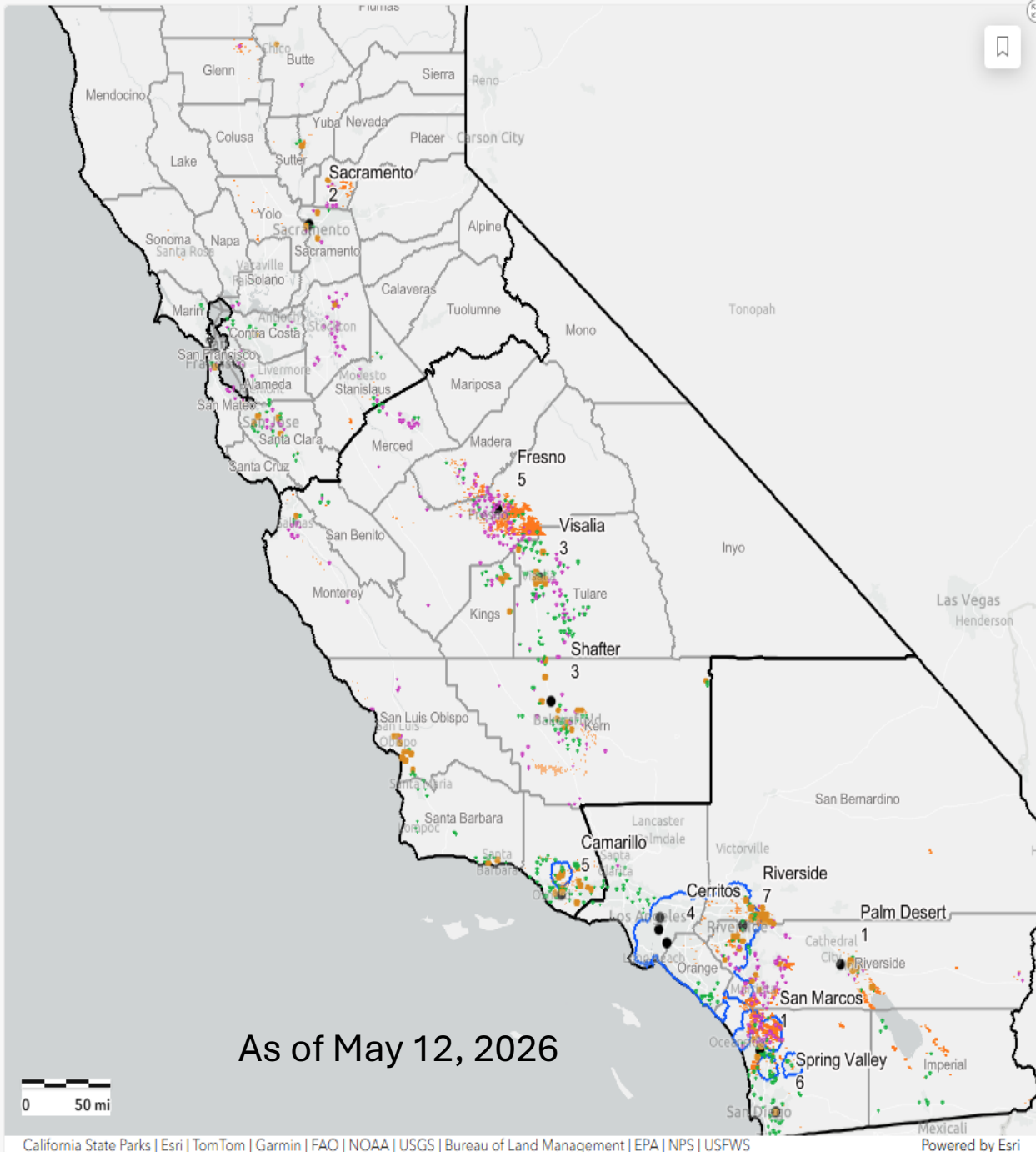
Citrus Layer



HLB Quarantine Boundary



CPDPD Administrative District



California State Parks | Esri | TomTom | Garmin | FAO | NOAA | USGS | Bureau of Land Management | EPA | NPS | USFWS

Powered by Esri

Multi-Pest Survey Status

46% Complete

Multi-Pest Survey Staff / Office

Office: **Riverside**
Number of Staff: 7

Office: **Spring Valley**
Number of Staff: 6

Office: **Camarillo**
Number of Staff: 5

Office: **Fresno**
Number of Staff: 5

Office: **Cerritos**
Number of Staff: 4

Office: **Shafter**
Number of Staff: 3

Office: **Visalia**
Number of Staff: 3

Office: **Commerce**
Number of Staff: 2

Office: **Sacramento**
Number of Staff: 2

Office: **Palm Desert**

Cycle 2, 2025 Grid Summary

Alameda County

Allocated: 11	Sites Surveyed: 84
Completed: 5	Plant PDRs: 2
Completed %: 45	ACP PDRs: 0

Butte County

Allocated: 2	Sites Surveyed: 17
Completed: 0	Plant PDRs: 0
Completed %: 0	ACP PDRs: 0

Contra Costa County

Allocated: 17	Sites Surveyed: 228
Completed: 11	Plant PDRs: 3
Completed %: 65	ACP PDRs: 0

Fresno County

Allocated: 87	Sites Surveyed: 506
Completed: 18	Plant PDRs: 15
Completed %: 21	ACP PDRs: 0

Glenn County

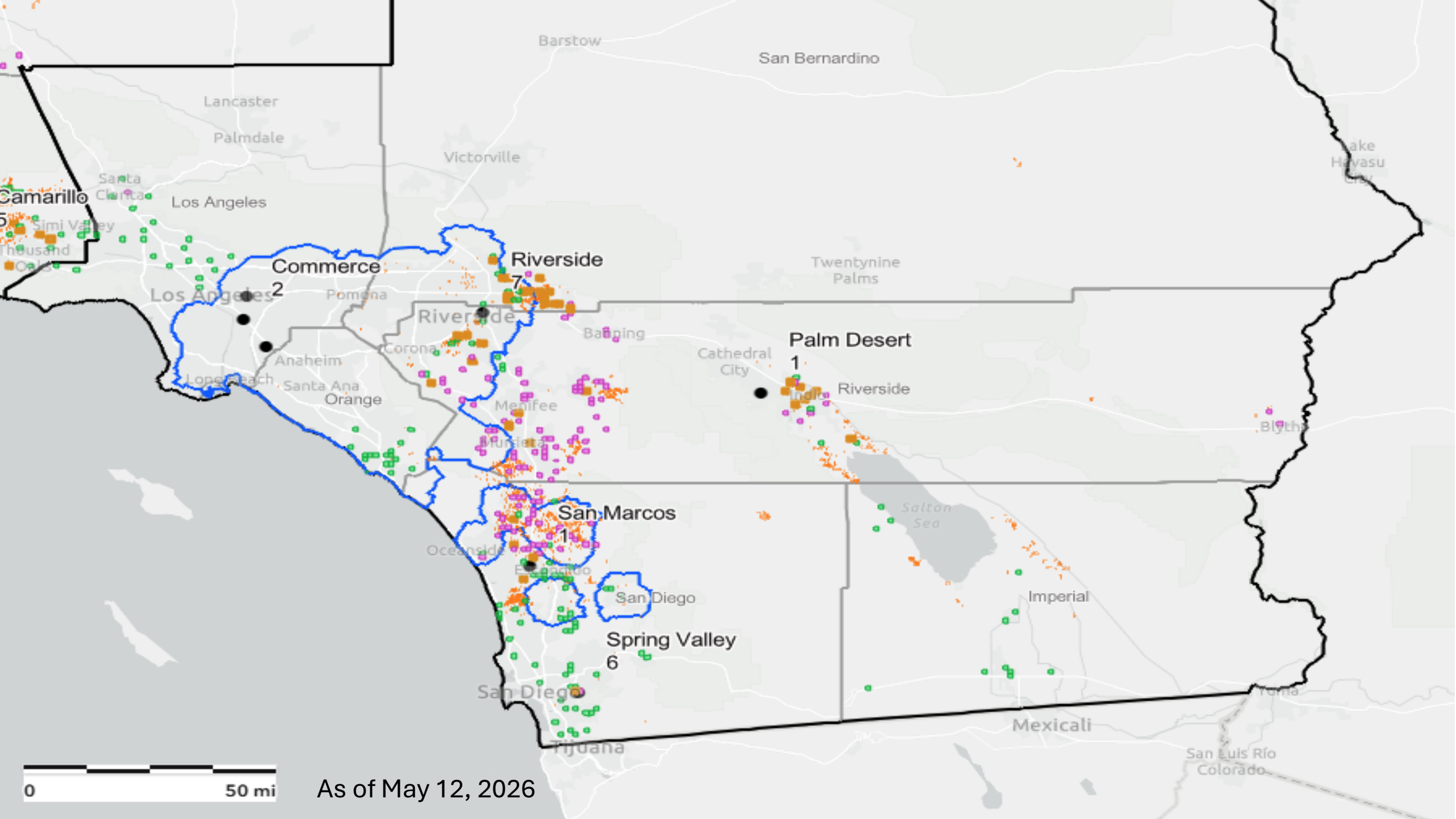
Allocated: 1	Sites Surveyed: 0
Completed: 0	Plant PDRs: 0
Completed %: 0	ACP PDRs: 0

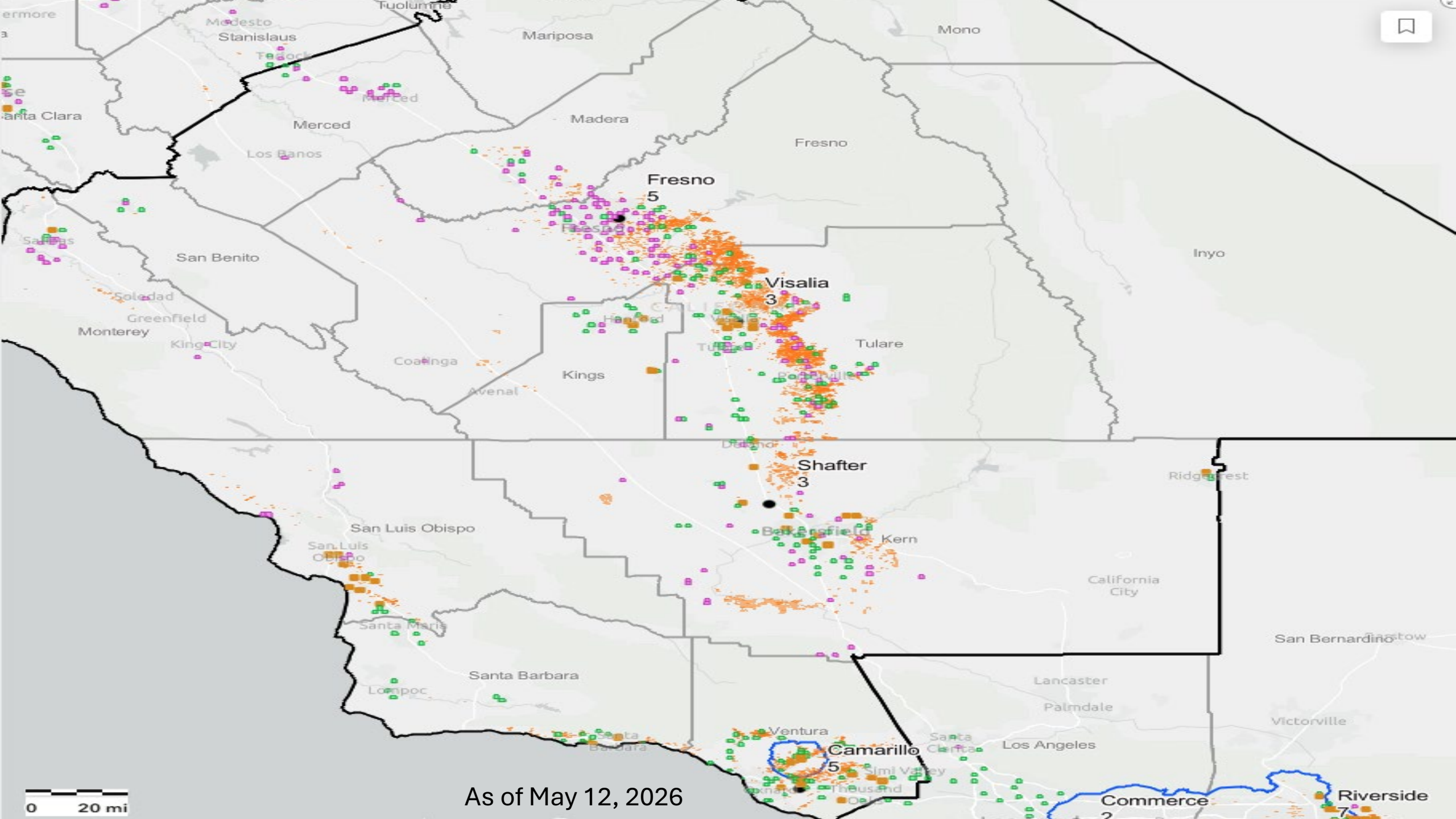
Imperial County

Allocated: 12	Sites Surveyed: 132
Completed: 12	Plant PDRs: 58
Completed %: 100	ACP PDRs: 50

Kern County

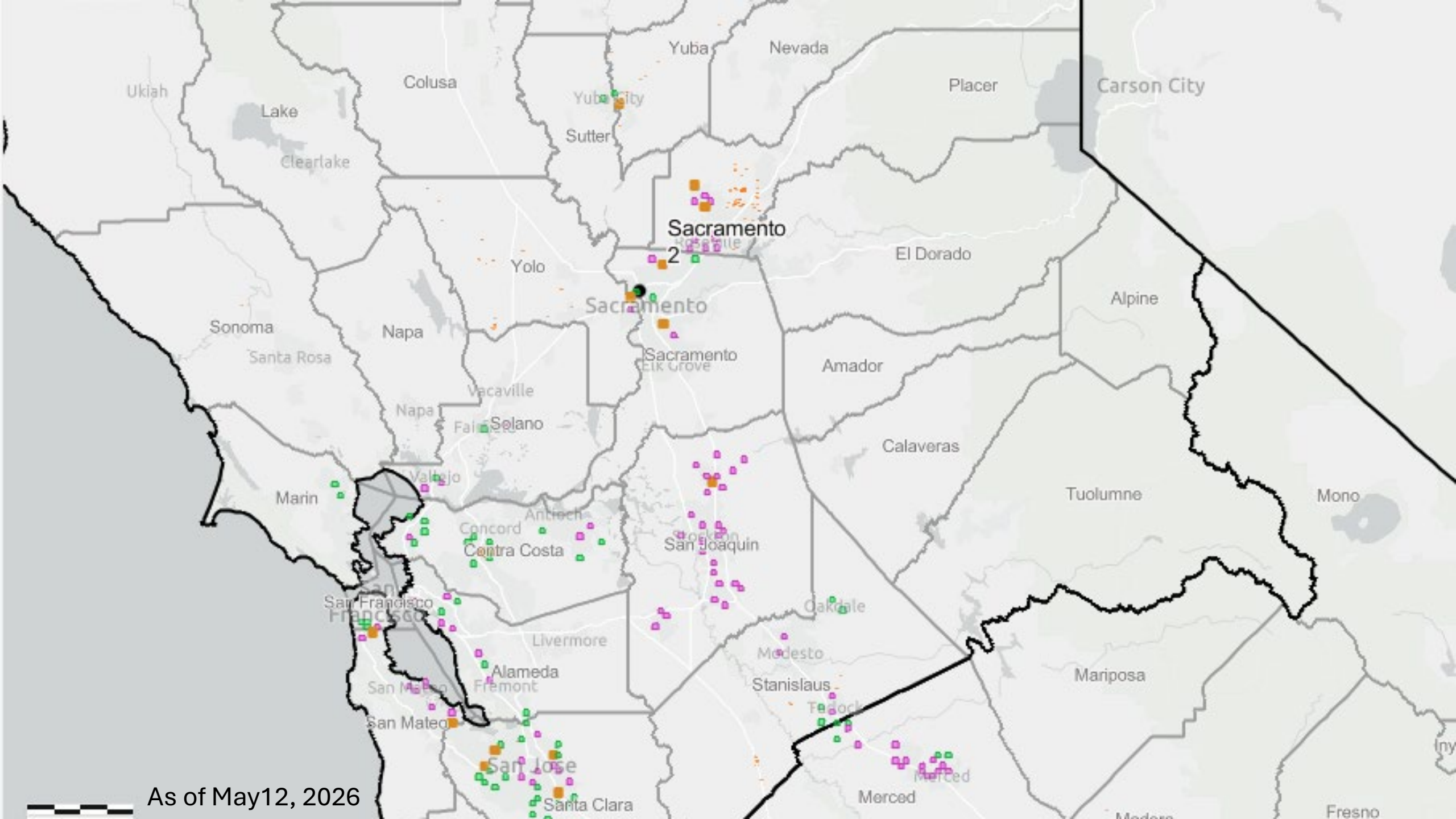
Allocated: 73	Sites Surveyed: 922
Completed: 37	Plant PDRs: 19
Completed %: 51	ACP PDRs: 0





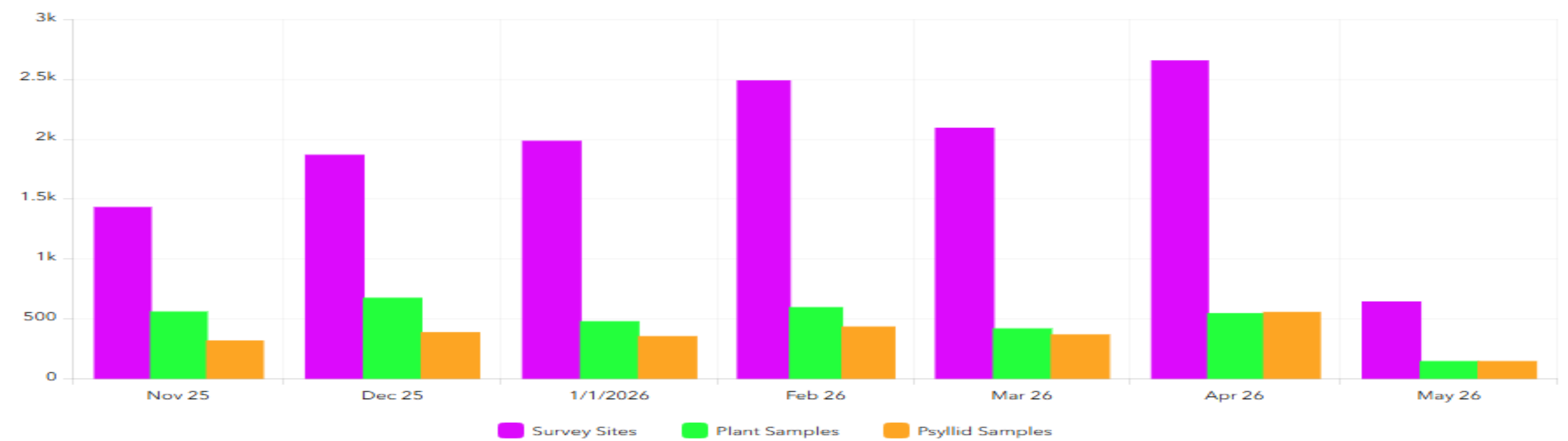
As of May 12, 2026

0 20 mi

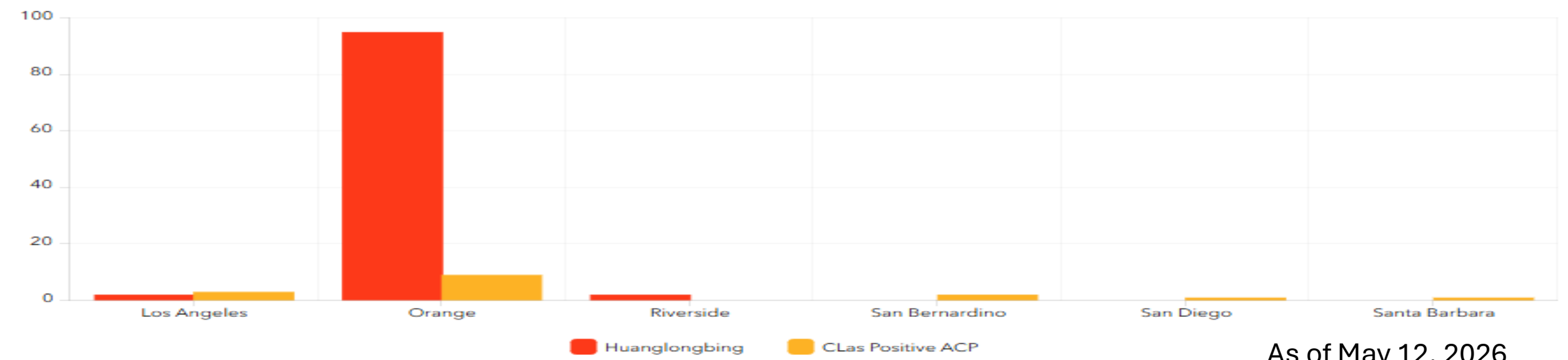


As of May 12, 2026

Multi-pest Survey Activities Last 6 Months



Detections from the Last 6 Months



As of May 12, 2026

**County Monthly Activity Report
October 2025 - February 2026**

County	FY 2025-26 Budget Amount	Percent Expended	CA's Issued	Grower Inspections	Transporter Inspections	Packer/Processor Inspections	Fruit Seller Inspections	Harvester/FLC Inspections	Regulatory Incidents	NOVs Issued	NOPAs
Fresno	\$100,000.00	63%	22	1	469	0	0	0	0	42	0
Imperial	\$40,000.00	49%	1	19	5	1	0	0	0	0	0
Kern	\$65,000.00	79%	26	4	343	8	0	4	0	0	0
Kings	\$10,023.75	53%	0	0	0	8	0	0	0	0	0
Los Angeles	\$91,769.63	66%	0	17	0	0	307	0	0	0	0
Monterey	\$14,994.63	38%	0	25	0	0	0	0	0	0	0
Orange (*5)	\$55,000.00	0%	0	0	0	0	0	0	0	0	0
Riverside (*2)	\$474,983.05	30%	9	5	137	2	20	0	0	2	0
San Bernardino	\$11,407.84	36%	14	9	2	0	22	0	0	2	0
San Diego	\$475,000.00	63%	3	53	37	35	32	0	0	3	0
San Luis Obispo	\$9,000.00	59%	0	0	0	0	1	0	0	0	0
Santa Barbara	\$11,997.81	74%	14	21	0	0	12	0	0	0	0
Tulare	\$375,000.00	59%	70	1	1,184	23	7	0	0	15	7
Ventura (*2)	\$249,888.28	8%	5	1	40	2	0	0	0	1	0
Total	\$ 1,984,064.99	46%	164	156	2,217	79	401	4	0	65	7

(*#) = number of invoices missing from reporting period

HLB Treatment Updates



Southern District May 20, 2026

Updates

- Delimitation treatments were carried out in the following areas:
 - Ladera Ranch and San Juan Capistrano in Orange County.
 - Loma Linda in San Bernardino County.
 - City of Riverside in Riverside County.
 - Pomona in Los Angeles County.
- Treated find site properties in five (5) cities.
- Public meetings were held on March 24th and April 30th to conduct treatments in four southern counties.

HLB Delimitation Treatment – 250 meters

Areas	Properties Treated	No Host Properties	Refusal/Pending
Riverside	275	209	10/16
Loma Linda	86	28	1/6
Ladera Ranch	95	75	10/5
San Juan Capistrano	7	3	0/0

HLB Delimitation Treatment- 50 meters

Areas	Properties Treated	No Host Properties	Refusal/ Pending
Pomona	13	6	2/3

Treatment– Find Site Properties

Cities	Properties Treated	No Host Properties	Refusal/ No Contact
Anaheim	2	0	0/0
Orange	1	0	0/0
Grand Terrace	5	6	0/0
Jurupa Valley	3	0	0/0
Corona	7	0	0/0

Southern District Staffing

Counties	Current	Vacancies
Los Angeles and Orange	22	2
Riverside and San Bernardino	18	1
San Diego and Imperial	12	2
TOTAL	52	5

By Activity

Counties	Survey	Treatment/Tree Removal	Regulatory
Los Angeles and Orange	14	6	2
Riverside and San Bernardino	8	5	4
San Diego and Imperial	10	0	2



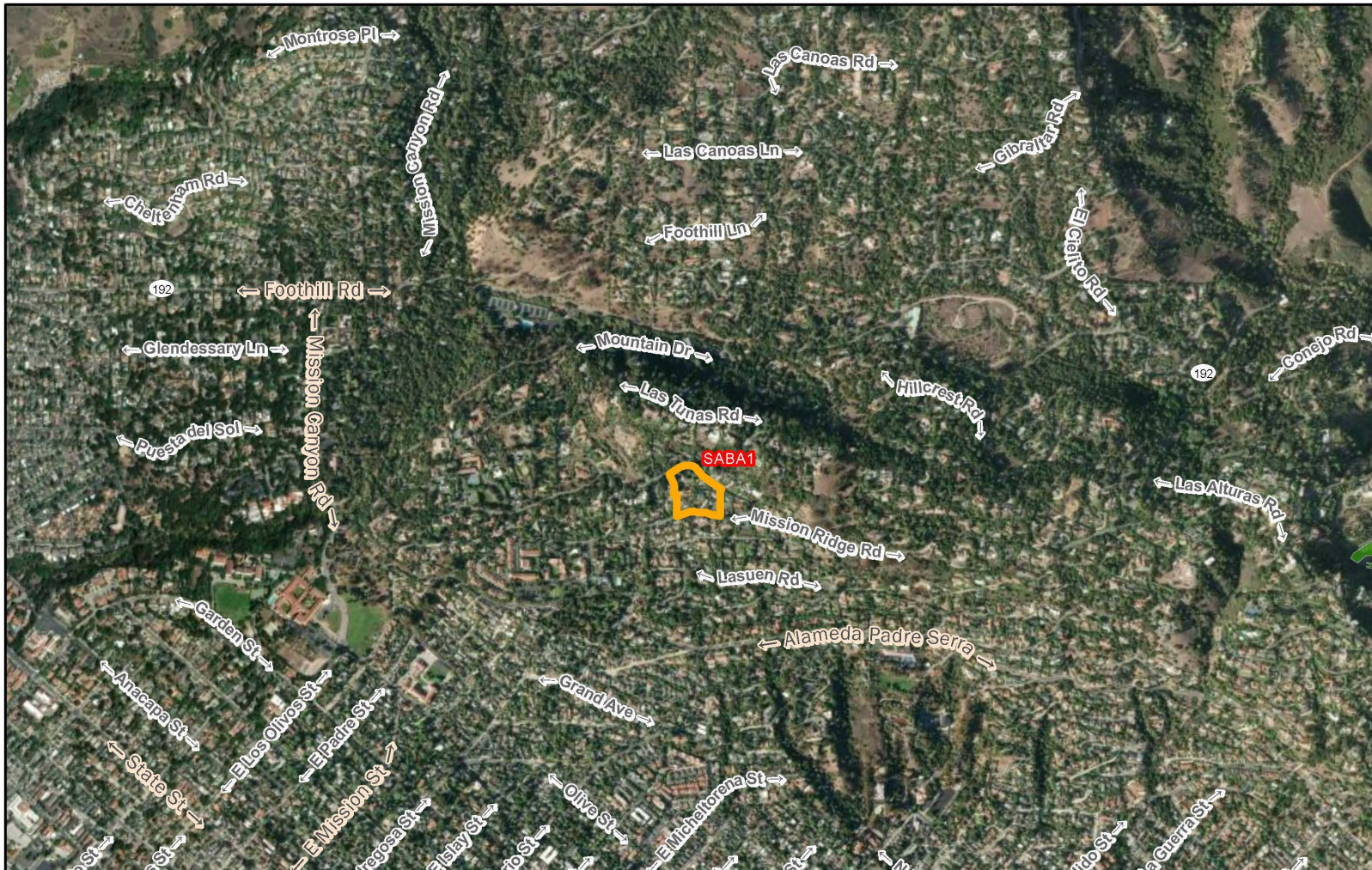
**Central District Update
Operations Subcommittee Meeting
May 20, 2026**

Central District Update

Since February, there were two adult ACP CLas + detections.

- Santa Barbara County – first detection on March 10, 2026.
 - One ACP Clas+ detection in a residential area of Santa Barbara.
 - 50m treatment boundary with a total of 7 properties. Five properties treated, two properties refused.
 - A public meeting was held on April 2, 2026.
 - Citrus staff completed treatment on April 14, 2026.
 - 59 total plant samples were submitted for testing. All plant samples were negative, however there are two resamples pending results.



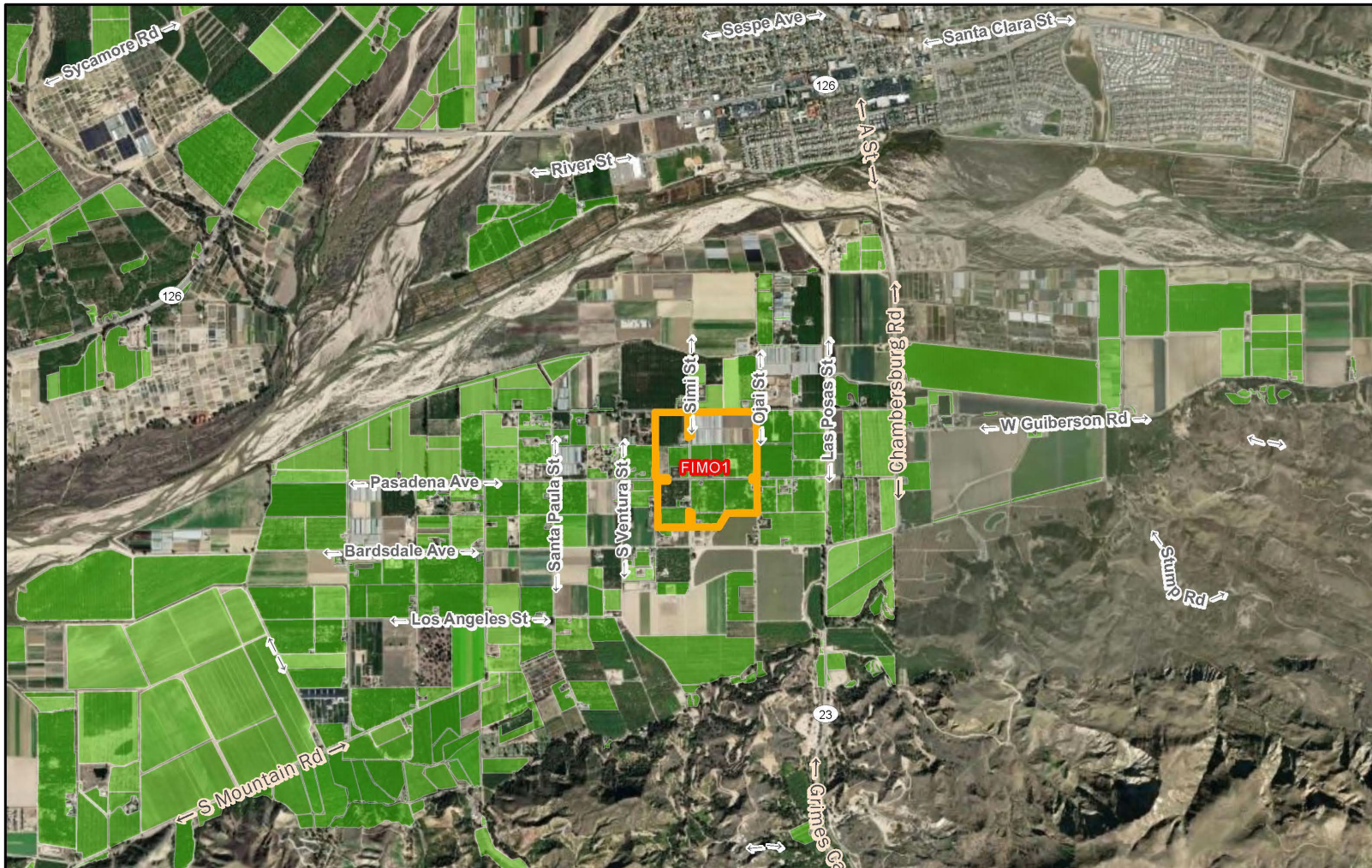


Total Properties Surveyed	Total Survey Refusals	Total Properties Treated	Total Treatment Refusals	Total HLB+ Trees	Total HLB+ Trees Removed	Total Tree Removal Refusals
7	0	5	2	0	0	0

Central District Update

- Ventura County – first detection on March 10, 2026.
 - One ACP CLas+ detection in a commercial grove in the City of Fillmore.
 - 250m treatment boundary; treatment is voluntary.
 - There are five conventional groves and two organic groves within the 250m.
 - Conventional groves have treated; organic groves have not as of May 4.
 - One no-contact after several attempts by CDFA and the county.
 - Two residential properties pending. No contact has been made after several attempts.
 - Total plant samples submitted for testing for this area was 3,184. All samples were negative for CLas.





Total Properties Surveyed	Total Survey "No Contact"	Total Properties Treated	Total Treatment Refusals	Total HLB+ Trees	Total Plant Samples (negative)	Total Tree Removal Refusals
7	1	5	0	0	3,184	0



Total Properties Surveyed	Total Survey Refusals	Total Properties Treated	Total Treatment Refusals	Total HLB+ Trees	Total HLB+ Trees Removed	Total Tree Removal Refusals
2,779	2	1,042	3	130	126	3



Central District Update

- The E-Fund for the HLB delimitation in Ventura County expires on June 30, 2026.
 - Citrus requested a time extension of one year to spend the remaining balance in State fiscal year 26-27, no change in funding amount.
 - Request to update the scope of the project to include Ventura and Santa Barbara as whole counties rather than specifying a city.
 - Approval for time extension and change in scope of project is pending E-Fund Committee approval on June 3.
- Detection and grove trapping in the valley remains status-quo.
 - Sharing grove trap location data with APCD to streamline grove trapping.
- Multi-pest (residential) risk survey.
- Citrus commodity (commercial) surveys will stop when temperatures are regularly above 85 degrees.



Central District Update - Projects

Office	Survey	Trapping	Treatment
Fresno	5	5	0
Visalia	4	3	0
Shafter	4	2	0
Camarillo	6	0	2



Central District Update - Staffing

County	Total Perm Staff (current)	Vacancies	Hiring Status
Fresno County (Fresno)	10	N/A	N/A
Kern County (Shafter)	6	N/A	N/A
Tulare County (Visalia)	7	N/A	N/A
Tulare County (Visalia Regulatory)	2	N/A	N/A
Ventura County (Camarillo)	9	N/A	N/A



**Northern District Update
Operations Subcommittee Meeting
May 20, 2026**

Northern District Update | ACP Trapping

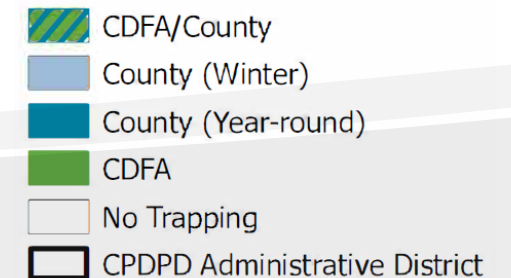
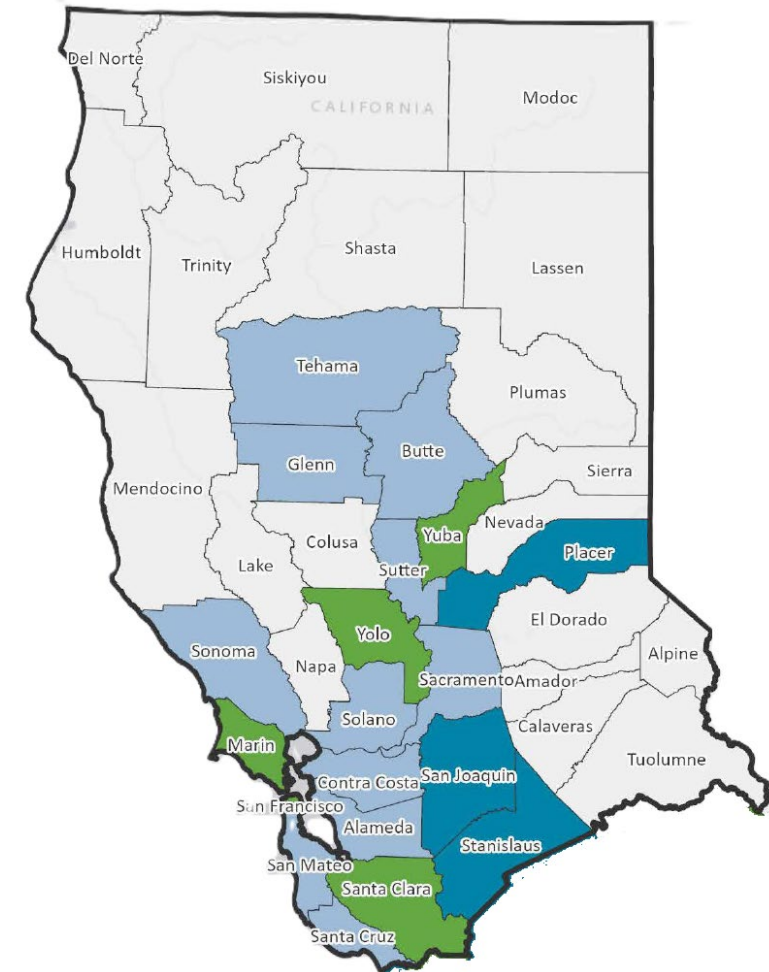
General Detection

Entity	Type	Number of Counties	Number of Traps
County	Commercial	3	145
County	Residential (YR)	3	1,351
County	Residential (W)	10	2,509
State (CDFA)	Residential (W)	6	867

New trapping agreements, that begin Oct 1 were received and are being processed

Agreements with 13 counties for trapping activities total \$758,850

Total saved compared to prior year ~\$100,000, which includes eliminating Napa County



Northern District Update | HLB Risk-Based Survey



2025 Cycle 2 Counties	
Alameda	San Joaquin
Butte	San Mateo
Contra Costa	Santa Clara
Glenn	Solano
Marin	Stanislaus
Placer	Sutter
Sacramento	Yolo
San Francisco	



Cycle 2 began November 2025 and is 46% complete

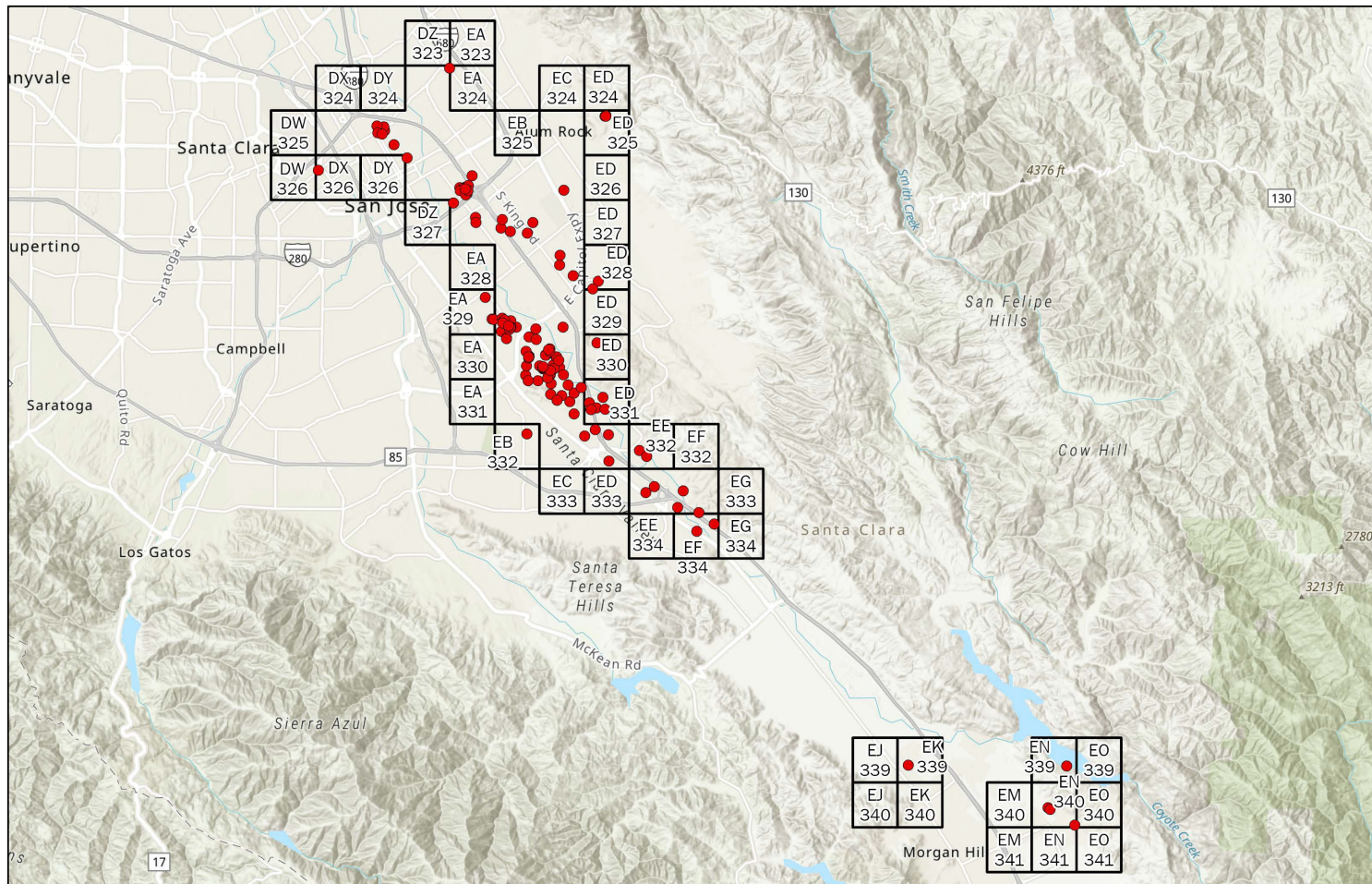


Northern District Update | Delimitation and Treatment

Santa Clara County

3 new detections in Santa Clara County since last Operations Subcommittee meeting on February 25, 2026

These detections did not result in a delimitation expansion



Santa Clara County - San Jose and Morgan Hill
Delimitation Grids

0 1.5 3
Miles

● 2023-2026 ACP Detection
□ Existing Grids (45)

CONFIDENTIAL - WORKING DOCUMENT
FOR INTERNAL USE ONLY

Northern District Update | Staffing



Activity	Staffing
Data Analysis (Statewide)	3
Regulatory	2
Trapping	5
Survey	2





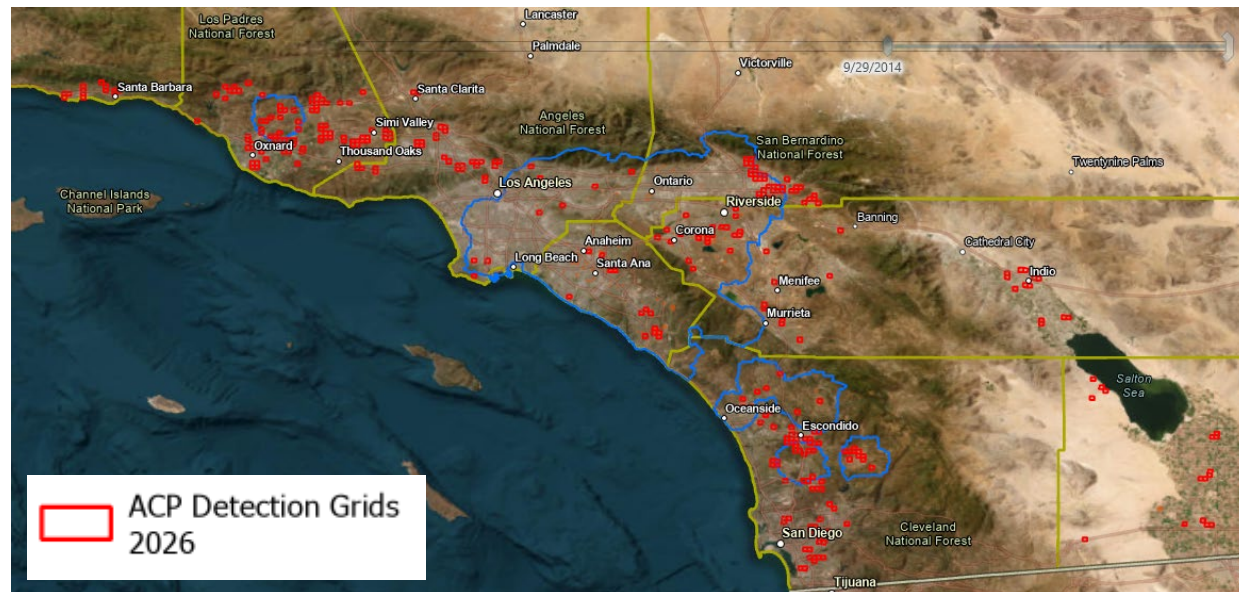
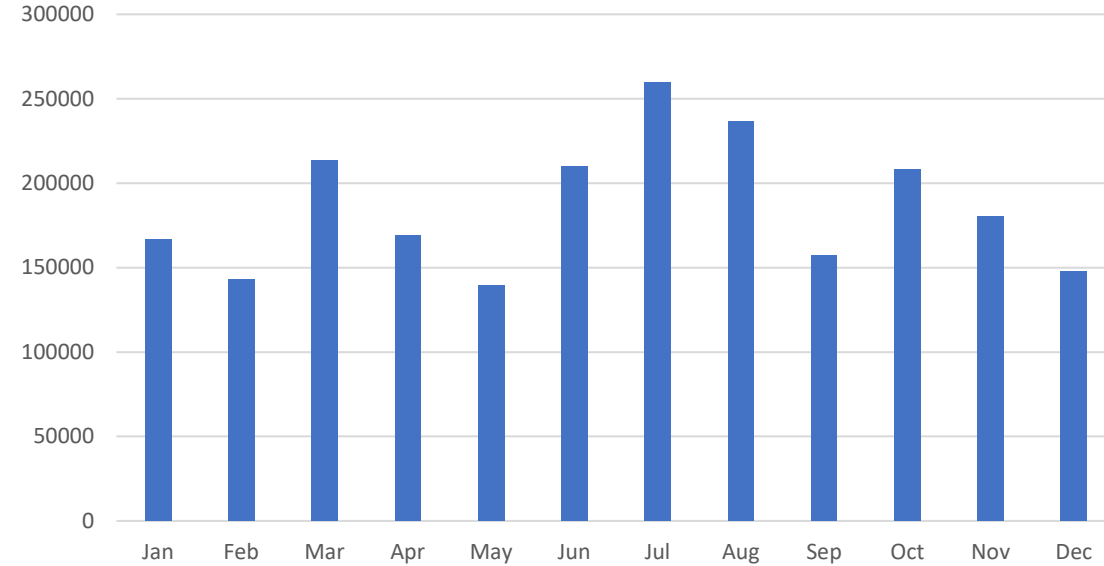
Asian Citrus Psyllid Biocontrol Release Strategy

May 20, 2026 Operations Subcommittee

Production and Releases

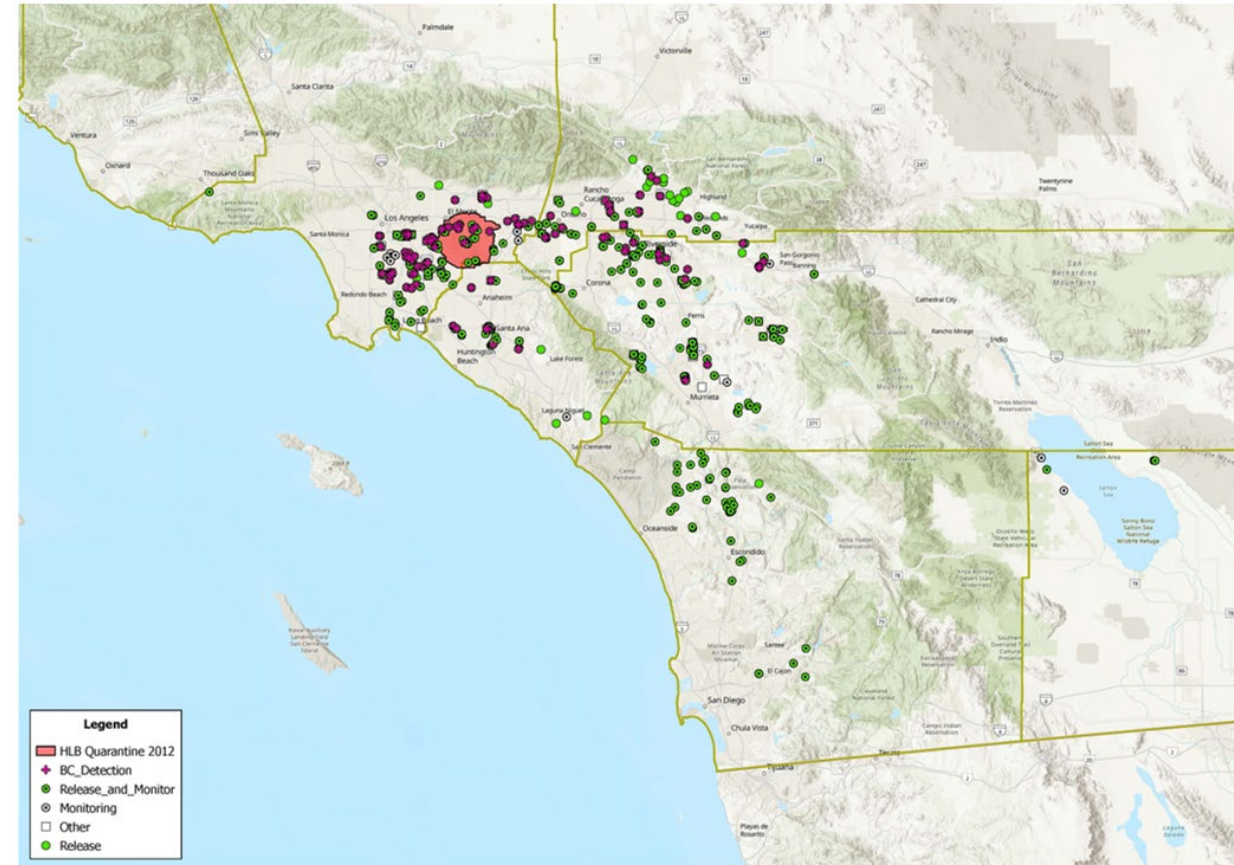
- Year-round production
 - ~2.2 million in 2025
 - ~182,000 a month
 - ~200-800 per site
- Quick release time (less than 2 weeks)
 - Increased parasitism and fitness
 - Lifespan about one month
- ACP detected in generally infested areas

Tamarixia Production 2025



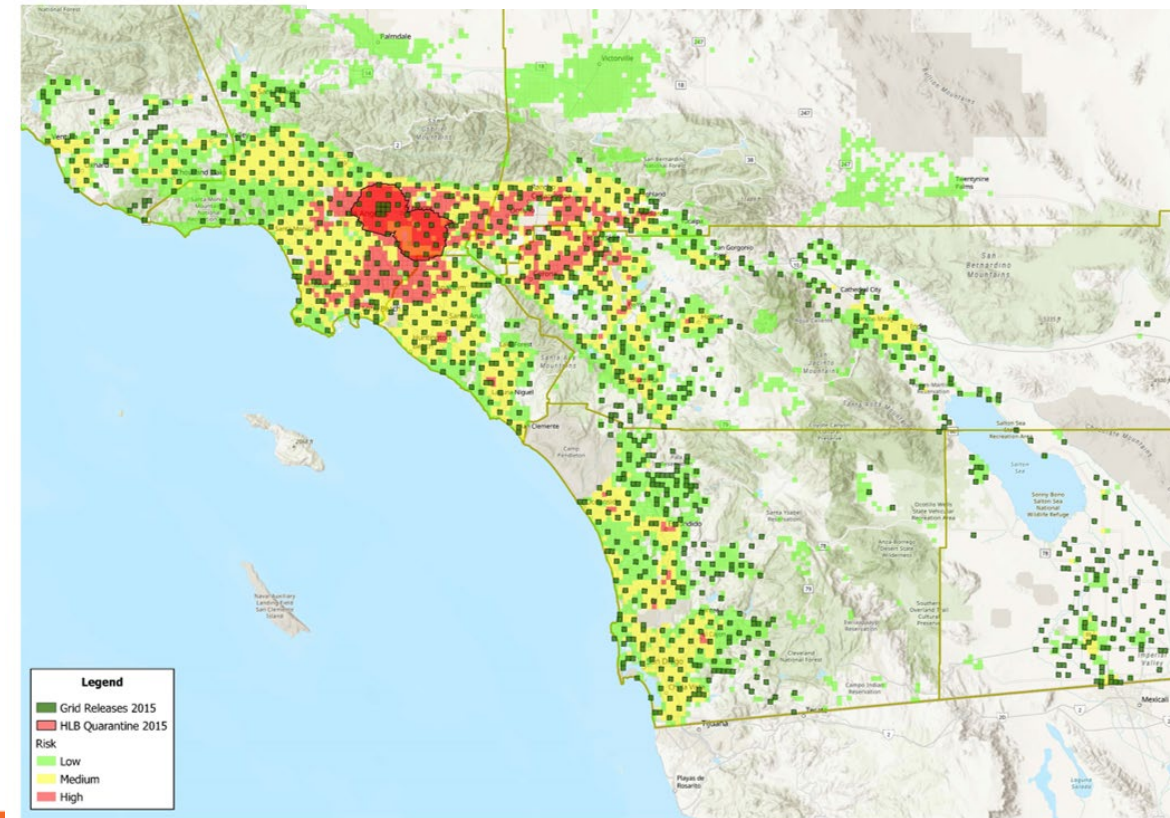
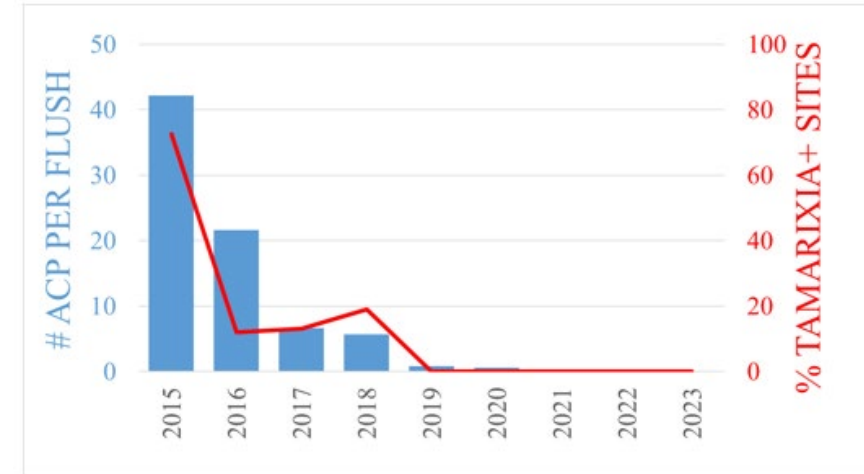
Establishment Releases 2011-2014

- High densities of ACP
- ~2.5 million TR released
- Parasitism found
 - At 111 of 572 total sites
 - 37 non-release sites
 - For up to 437 days after release
 - Up to 8 miles from a release



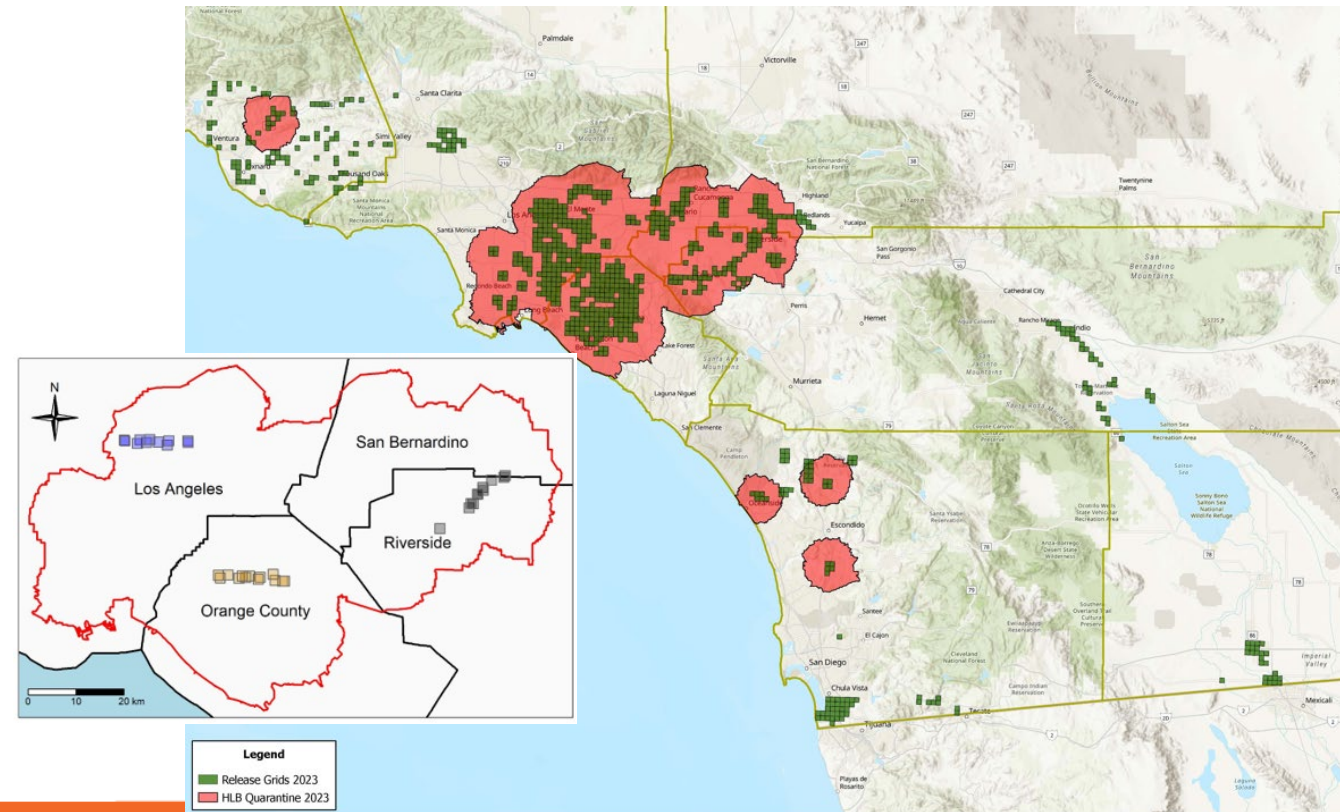
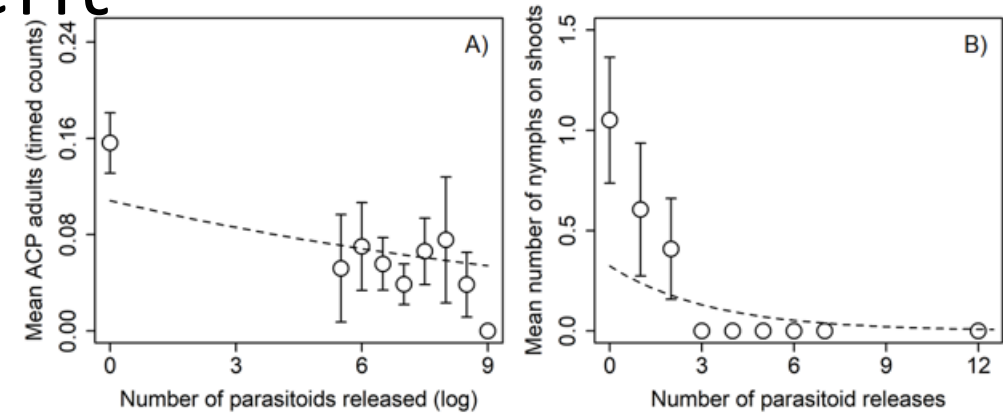
Dispersal Releases 2014-2017

- Across urban Southern California
- ~2.5 miles apart
- Release rates determined by HLB risk model
- Declines in ACP from 28 coastal, inland, and desert monitoring sites
 - 2015-2018



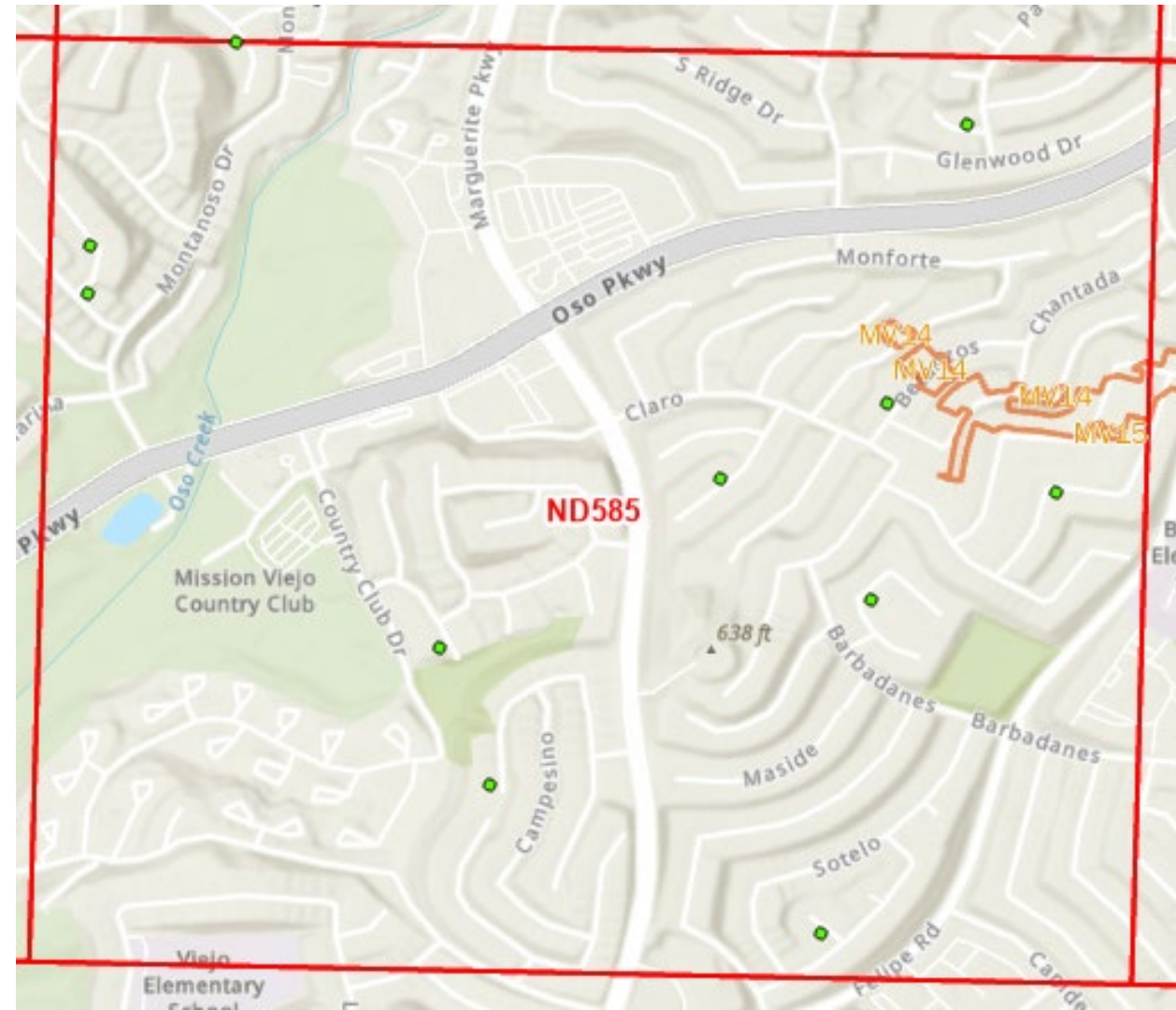
Targeted Releases 2017-Present

- High-risk areas
 - HLB Quarantine over 65%
 - Highways and US/Mexico Border
 - New ACP Finds
- Suppress potentially infected ACP
 - 30 monitoring sites in HLBQ
 - Increased release numbers or frequencies suppress ACP



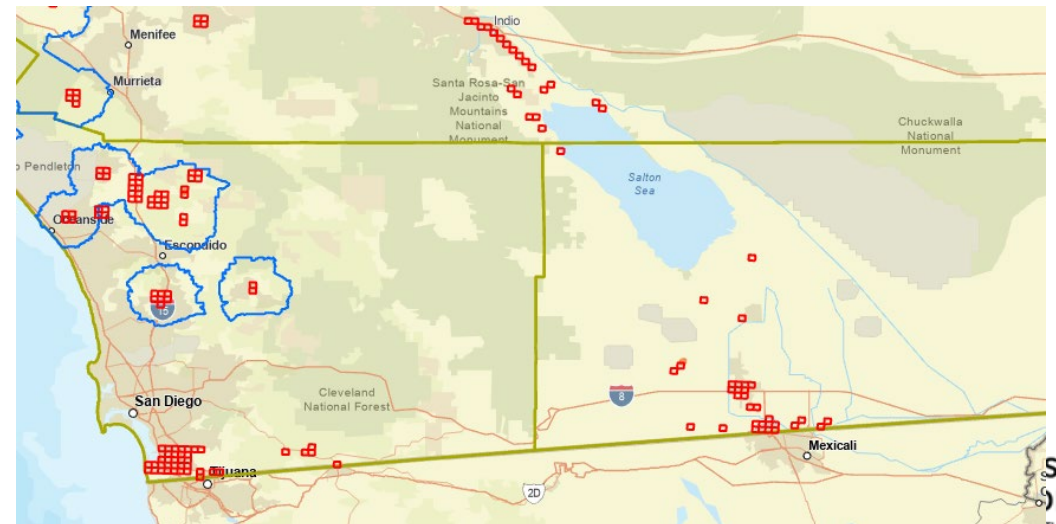
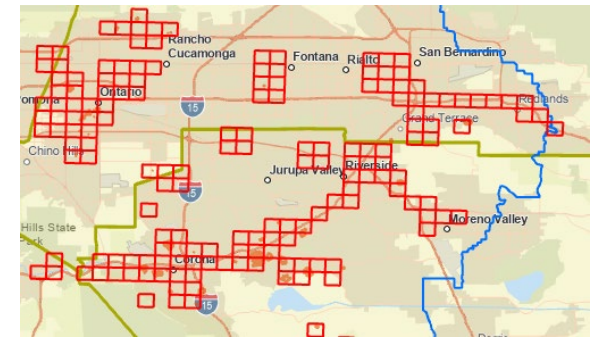
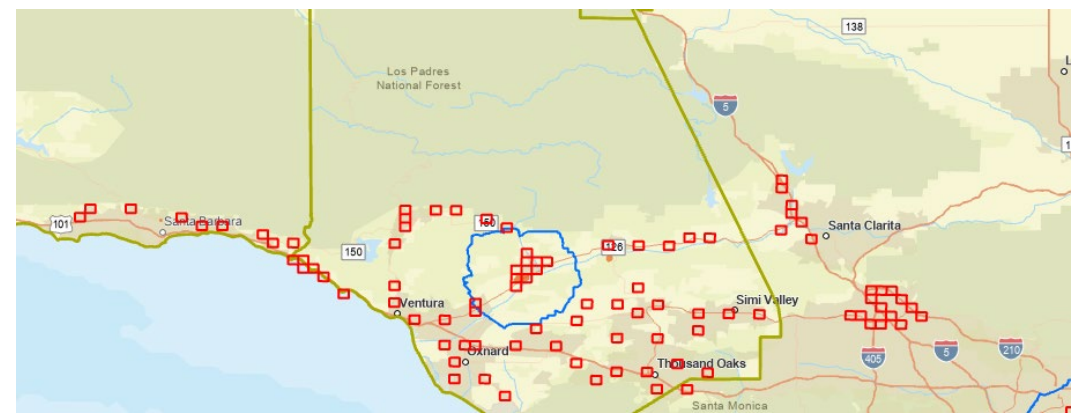
HLB Quarantine

- Releases
 - Within grids where HLB has been found and ACP are present
 - Outside of treatment area
 - Avoid treatment areas for about 6 months
 - Revisit grid
 - New sites when possible
- Delayed Treatments
 - Release around finds before treatments begin (e.g. refusals)
 - Target potentially infected psyllids as quickly as possible



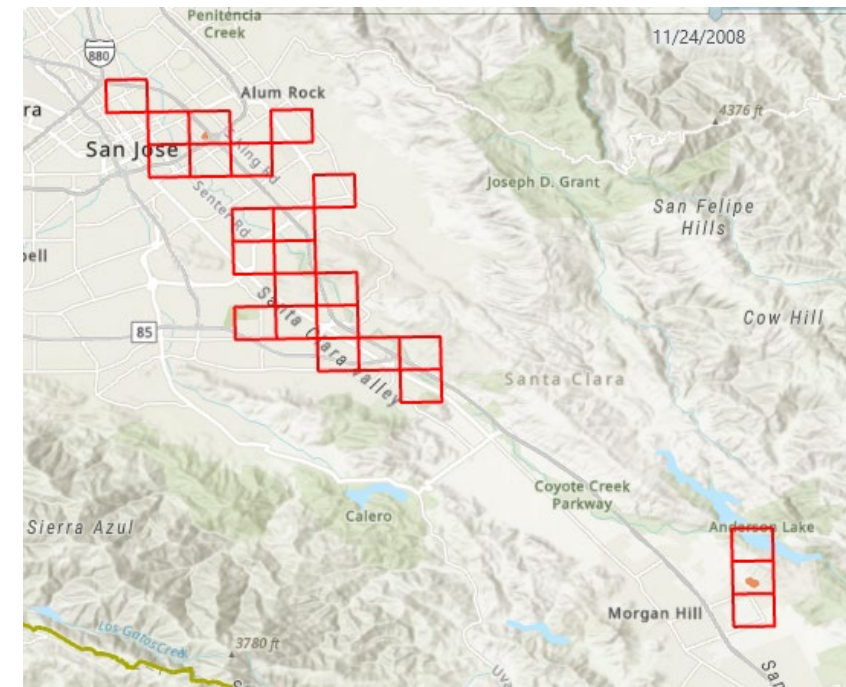
Borders and Highways

- Suppress movement of ACP
 - Mexico
 - Hitchhikers
- No chemical treatments
- Revisit grids
 - New sites when possible



Newly Infested Areas

- Santa Clara County – San Jose
 - Continuous ACP finds
 - No chemical treatment
 - Bimonthly biocontrol releases
 - At and around finds (Delim)
 - Ideally where nymphs are present
- Central/Northern
 - Where ACP are not established
 - Eradication/chemical treatment
 - Biocontrol
 - Outside of treatment areas around find





Asian Citrus Psyllid Biocontrol Update

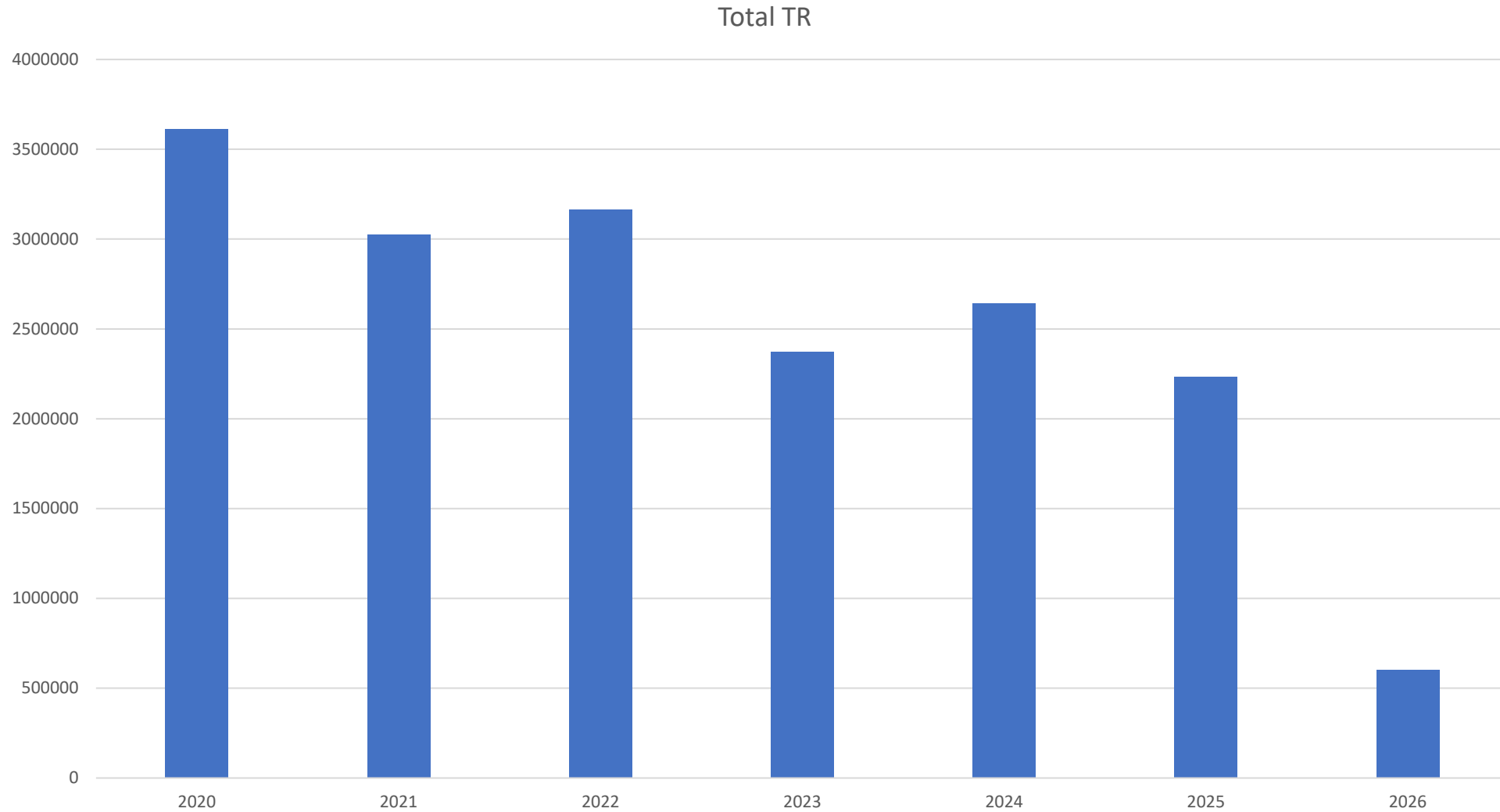
March 2026

Biological Control Agent Releases

County	Releases Previous Month Mar-26	<i>T. radiata</i> Released 2026	<i>T. radiata</i> Released 2011-2026	<i>D. aligarhensis</i> Released 2011-2026
Imperial	9500	32700	828243	10295
Los Angeles	42400	130100	9493584	107734
Orange	52600	126400	7663616	71179
Riverside	10000	95900	4691002	127739
San Bernardino	31600	71300	2768715	57252
San Diego	15900	59800	3736964	86403
Ventura	9500	38700	2862706	16830
Santa Barbara	4200	13200	520182	12012
Kern	0	19200	457264	0
Santa Clara	5000	15000	485237	0
Placer	0	0	3400	0
San Luis Obispo	0	0	147000	0
Tulare	0	0	79800	0
Fresno	0	0	47800	0
Monterey	0	0	36000	0
Madera	0	0	13800	0
Arizona	0	0	253500	0
Mexico	0	0	306000	0
Total	180700	602300	34394813	489444
			Total 2011-2025	34884257



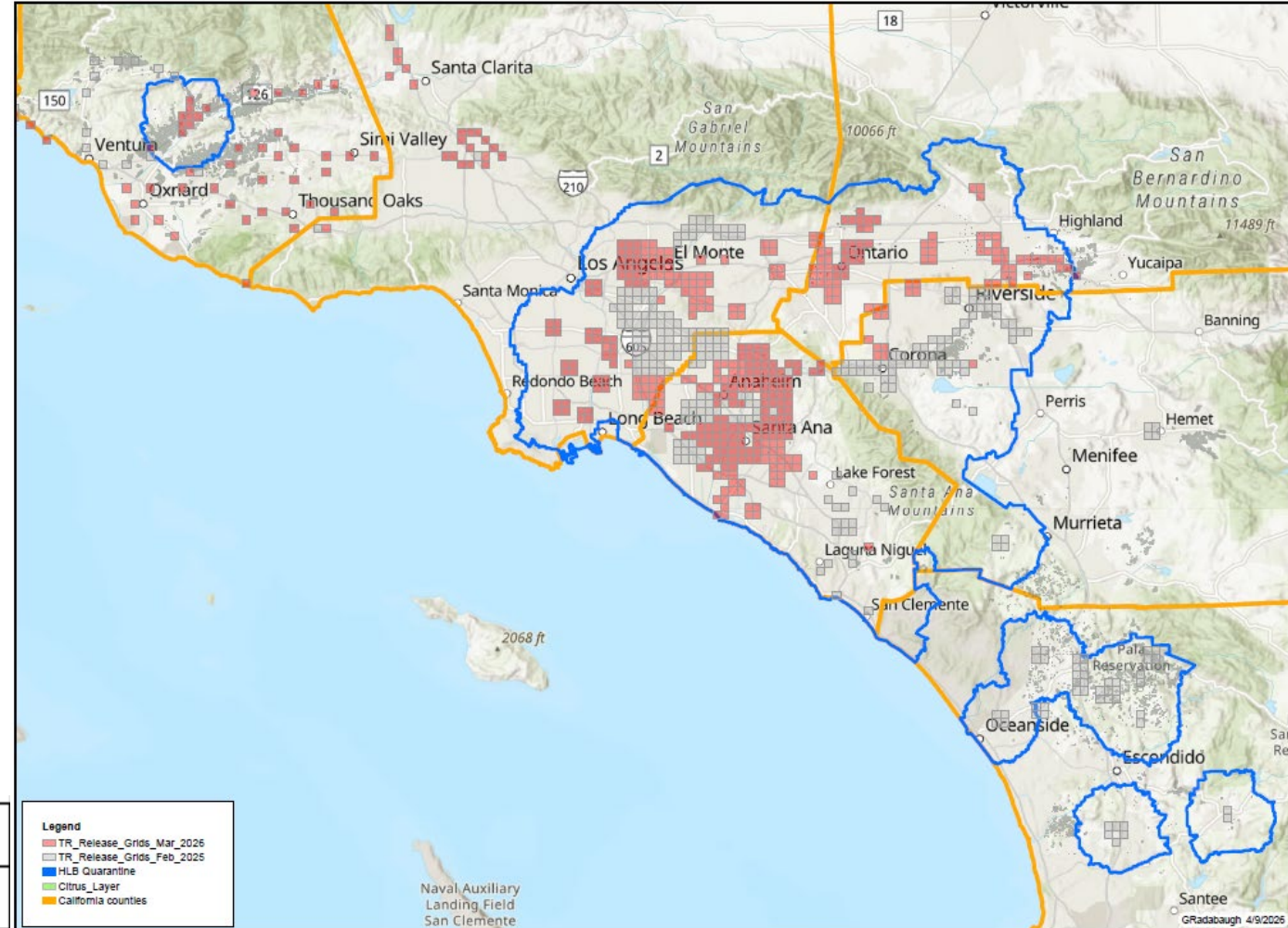
Biological Control Agent Releases



Biological Control Agent Release Areas

Releases in:

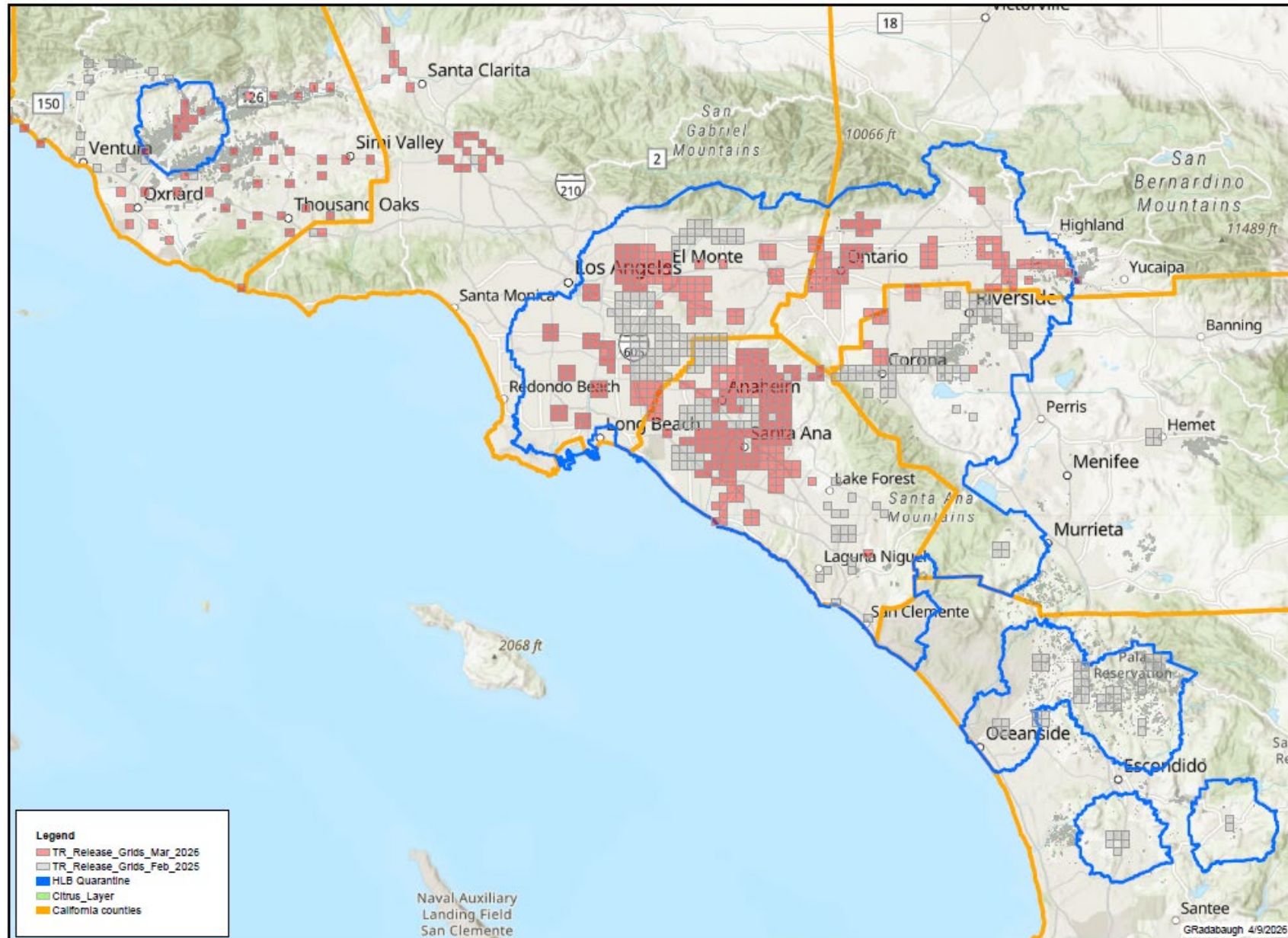
- HLB Quarantine areas
- Borders
- Trade routes
- Area-wide management
- Newly established ACP



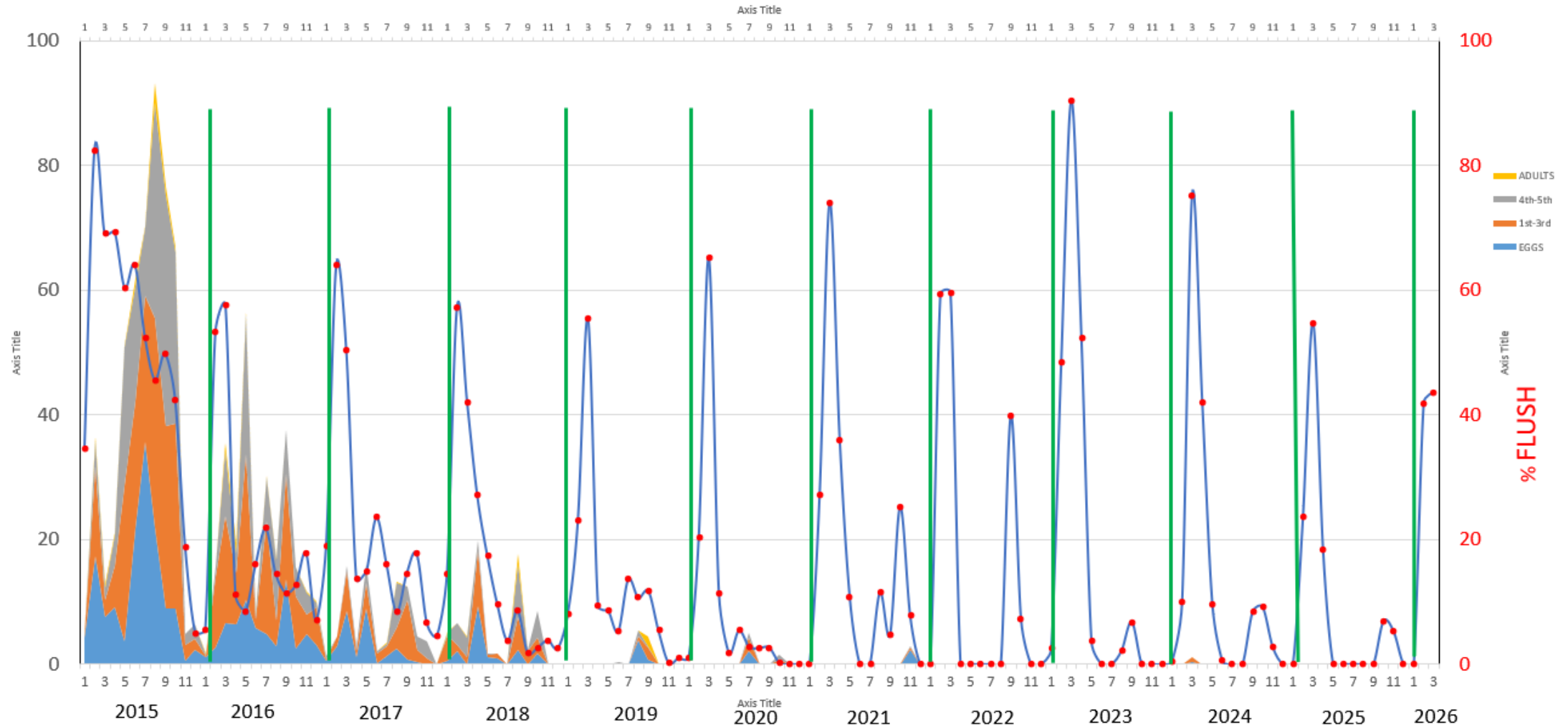
2025		
Release Type	Released	%
HLB	1,517,100	68
New ACP	61,600	3
AW, Routes and Borders	652,900	29



Releases within / around HLB Quarantine areas



Region-Wide Urban Monitoring 2015 - Present



Outreach Update

May 20, 2026



**CITRUS PEST & DISEASE
PREVENTION PROGRAM**

Invasive Plant Pest and Disease Awareness Month

Statewide Outreach Campaign - April

Highlighting CDFA's biocontrol efforts as an innovative approach to combating ACP, while raising awareness of the threats posed by the ACP and HLB among residents in key areas statewide

Target Audiences:

- Statewide messaging sharing CDFA's biocontrol efforts and general ACP/HLB awareness
- Targeted messaging on ACP and HLB prevention in residential areas near commercial citrus

Tactics:

- Press release
- Social media
- Earned media
- New biocontrol webpage
- Paid advertising

125 million+
Overall Potential Touchpoints in April

Invasive Plant Pest and Disease Awareness Month

267

Press Release
Placements

463K+

Social Media
Impressions

213

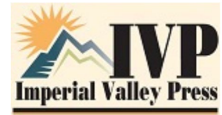
Audio News Release
Placements

12,820+

Biocontrol Webpage
Views (*Since Launch*)

1.95%

Advertising Click-
Thru Rate



Bakersfield.com



SANTA MARIA TIMES



FIMES LA

Beneficial Bugs to the Rescue: Ag Officials Release Natural Predators to Stop Invasive Pests

Stop the Asian Citrus Psyllid
Learn how Tamarixia help reduce ACP and protect citrus trees across California. Right now.

[Learn more](#)



California's Bug vs. Bug Plan
State officials highlight a "bug vs. bug" strategy to help save citrus trees.

Sponsored · Citrus Pest Prevention

Help Protect Backyard Citrus
California biocontrol efforts help reduce ACP and protect residential citrus trees.

Ad Citrus Pest Prevention [Learn more](#)

Y101 1025 KSFM 93.1
KSYX 96.5 KRTH 101 Keta 99.9

Communications Support for New and Emerging Detections

CLas+ ACP Detections in Ventura and Santa Barbara Counties

- Crisis communications management team facilitation
- Key message development on CLas+ ACP to align on situation updates
- Citrus Insider E-blast

Media Support in San Diego County

- Facilitated media interview requests on Ramona area quarantine expansion

Reactive Media Inquiries on ACP/HLB and Sweet Orange Scab

- LA and Orange counties

Two CLas+ ACP Detections Confirmed in Central Coast

03/17/26

Two adult Asian citrus psyllid (ACP) samples have been confirmed positive for Candidatus...

[Read More](#)

Coast

Detection of HLB Triggers Quarantine in Ramona Area of San Diego County

03/11/26

A new quarantine area was established on March 2 in the city of Ramona, San Diego County, following...

[Read More](#)

Southern California



Citrus tree disease expands in LA and Orange counties

Educating Target Audiences Online and at Events

Connecting with target audiences in person

- California Citrus Showcase – Industry
- California Citrus Festival in Riverside – Residential
- Riverside Insect Fair – Residential
- California Agriculture Day – Elected Officials
- Punjabi American Growers' Group Annual Workshop (Madera County) – Industry
- Distribution of print collateral at the National Travel and Adventure Show- Los Angeles, Santa Clara, Dallas, and Denver - Residential with a focus on pathways.
- Distribution of print collateral at Southern California Association of Governments Conference – Elected Officials
- Distribution of print collateral at California Contract Cities Annual conference – Elected Officials
- Distribution of print collateral at the Santa Clara County Spring Garden Fair

Social media content targeted in zip codes near CPDPD delimitation activities or near commercial citrus operations

- Supporting ag officials in the neighborhood
- Don't Move Citrus
- General ACP and HLB awareness

