

Huanglongbing (HLB) Hotspot Working Group Recommendations

R. Clark, M. Daugherty, M. Kaiser, W. Luo, N. McRoberts, K. Okasaki, S. Olkowski, D. Phong, R. Uckoo

Urban Hotspot Definition:

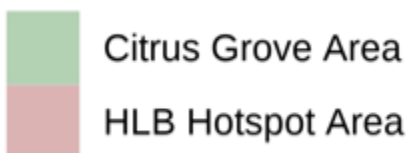
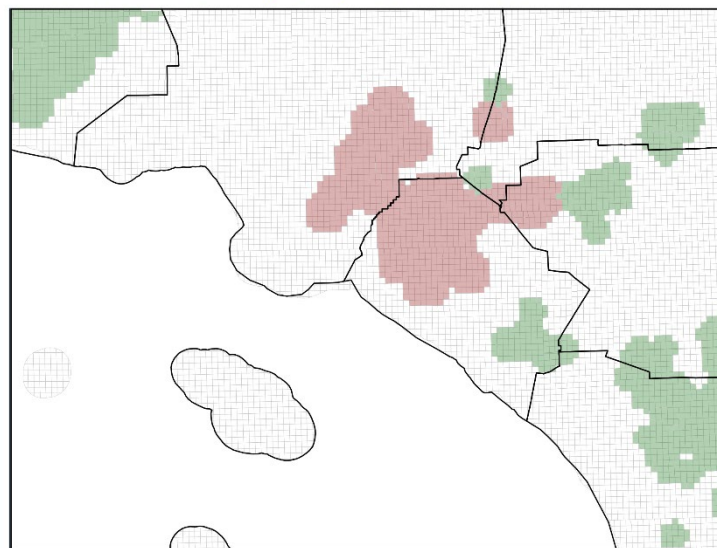
1. The threshold of apparent HLB positivity rate for a Section Township Range grid (STR) should be **3 to 5%** when averaged over the last three years. A lower threshold for regions with low commercial citrus activities and a higher threshold for regions with high commercial citrus activities.
2. An STR with **< 10 HLB detections** over a consecutive three-year period cannot be declared hotspot.
3. Any STR that is declared a hotspot should have a **halo of 3 STRs** (3-mile radius), also declared hotspots.

Agricultural and Urban Interface Definition:

4. However, no area within **3 miles of commercial citrus** should be declared hotspot. This area of 3 miles of commercial citrus is defined as the agricultural and urban interface.
5. Commercial citrus is defined as groves with 5 or more acres, or groves within one mile of other groves where the **combined acreage is 5 or more acres**.

Figure 1. Current Hotspot and Agricultural and Urban Interface Area in Southern California

Thresholds - Positivity: 3% | Positive Trees: 10



Citrus Pest and Disease Prevention Committee Regional Working Group

N. McRoberts, J. Gorden, E. Rabe, M. Klein, I. Milosavljevic, C. Boisseranc, K. Ball, J. Gless

Current California Department of Food and Agriculture Activities:

	Northern California ¹	San Joaquin Valley	Central Coast ²	Southern Coast ³	San Bernardino and West Riverside	Los Angeles and Orange	Desert ⁴	San Diego
Huanglongbing (HLB) and <i>Candidatus Liberibacter Asiaticus</i> (CLAs)+ Asian Citrus Psyllids (ACP) Detection Response	✓	✓	✓	✓	✓	✓	✓	✓
ACP Detection Response (Commercial)	✓	✓	✓	✗	✗	✗	✗	✗
ACP Detection Response (Residential)	✓	✓	✓	✗	✗	✗	✗	✗
Biocontrol (Commercial)	✗	✗	✗	✗	✗	✗	✗	✗
Biocontrol (Residential)	✓	✓	✓	✓	✓	✓	✓	✓
Commodity Survey	✓	✓	✓	✓	✓	✓	✓	✓
Grove Trapping	✓	✓	✓	✗	✗	✗	✗	✗
Residential Multi-Pest Survey	✓	✓	✓	✓	✓	✓	✓	✓
Residential Trapping	✓	✓	✓	✗	✗	✗	✗	✗

1. Northern California includes counties north of Merced, including Santa Clara.

2. Central Coast region includes Monterey, San Benito, and San Luis Obispo.
3. Southern Coast region includes Santa Barbara and Ventura.
4. Desert region includes Imperial and Riverside East.

Regional Working Group Recommendations:

Except potentially adding limited trapping in the agricultural/urban interface in Southern California, the regional working group did not recommend the addition or removal of activities beyond what CDFA is currently performing. The group, however, recommended modifications to the protocols for existing activities. Specific recommendations are provided below.

1. **Northern California:** Release biocontrol agents in residential areas where ACP breeding populations are found and around ACP detection response areas. Continue to optimize residential trapping by placing traps in higher-risk areas only.
2. **San Joaquin Valley:** Release biocontrol agents in residential areas where ACP breeding populations are found and around ACP detection response areas.
3. **Central Coast:** Release biocontrol agents in residential areas where ACP breeding populations are found and around ACP detection response areas.
4. **Southern Coast:** Dr. McRoberts, Dr. Morgan, and Dr. Milosavljevic will propose locations for sentinel trapping, preferably in the agricultural and urban interface. Consider replacing calendar-based commercial grove treatments with ACP detection response treatments.
5. **San Bernardino, West Riverside, Orange, and Los Angeles:** Perform biocontrol activities in agricultural/urban interface. Conduct residential multi-pest survey activities in non-core areas. Dr. McRoberts, Dr. Morgan, and Dr. Milosavljevic will propose locations for sentinel trapping.
6. **Desert:** Perform biocontrol and multi-pest survey activities in the agricultural/urban interface. Consider replacing calendar-based commercial grove treatments with ACP detection response treatments.
7. **San Diego:** Perform multi-pest survey activities in the agricultural/urban interface. Consider replacing calendar-based commercial grove treatments with ACP detection response treatments. Grove trapping may be considered as an activity conducted by the Pest Control District. Dr. McRoberts, Dr. Morgan, and Dr. Milosavljevic will propose locations for sentinel trapping.