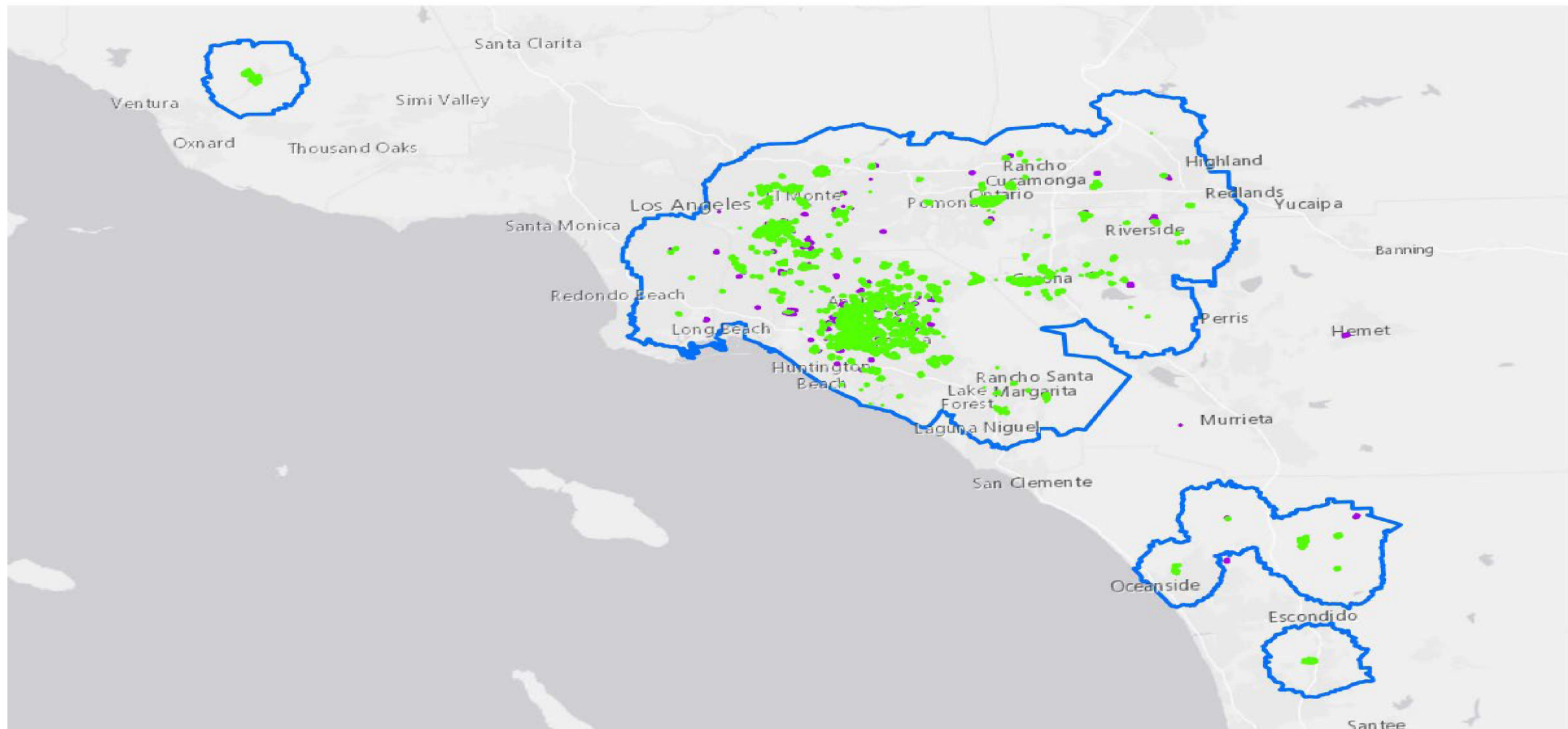


HLB Detection, Delimitation, and Tree Removal Updates





Southern District

September 11, 2025



HLB Quarantine and Treatment Area

8/18/2025

-  HLB Quarantine Area
-  HLB Treatment Area
-  Mandatory
-  Non-mandatory

0 5 10
Miles


CITRUS PEST & DISEASE
PREVENTION DIVISION


CALIFORNIA DEPARTMENT OF
FOOD & AGRICULTURE

Detection Updates

- Detection of Clas+ ACP at a residential site in Murrieta.
 - The tree was sampled as part of the multi-pest survey.
- Fewer HLB+ detections in So Cal due to re-alignment of delimitation survey.
 - 54 HLB positive trees detected in the last two (2) months.
 - Reduced amount of plant samples submitted to the lab.
- A few warrants were executed in Orange and San Diego Counties to conduct survey, treatments, and removal of HLB+ trees from the refusal properties.
 - Additional rounds of warrants in the upcoming weeks.

HLB Delimitation Survey- 250m

Areas	Total Properties	Properties Surveyed	No-Host Properties	Refusals/ Pending	Completion %
Coto De Caza (1-2)	225	202	71	5/18	100%
Riverside	250	177	66	10/63	75%

HLB Delimitation Survey- 50m

Areas	Total Properties	Properties Surveyed	No-Host Properties	Refusals/ Pending	Completion %
Rancho Santa Margarita	4	4	2	0/0	100%
Corona	21	20	13	0/1	100%

Delimitation Survey - Find Sites

Areas	Total Properties	Properties Surveyed	No-Host Properties	Refusals	No Contact
Villa Park	1	1	0	0	0
Anaheim	54	38	6	6	11
				0	
Garden Grove	7	5	1	2	1
Santa Ana	24	18	2	2	4
Brea	5	4	0	1	0
Irvine	5	4	0	0	1
Lake Forest	1	1	0	0	0
Midway City	1	1	0	0	0
Mission Viejo	6	6	0	0	0
Tustin	1	1	0	0	0

HLB Positive Trees (July- August)

County	Detected	Removed	Cumulative Pending
Los Angeles	1	53	101
Orange	34	121	183
San Bernardino	2	10	32
Riverside	17	17	43
San Diego	0	0	0
			359

Huanglongbing (HLB) Hotspot Working Group Recommendations

R. Clark, M. Daugherty, M. Kaiser, W. Luo, N. McRoberts, K. Okasaki, S. Olkowski, D. Phong, R. Uckoo

Urban Hotspot Definition:

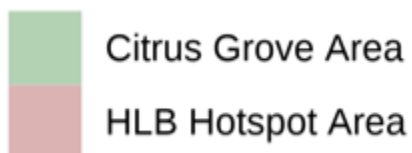
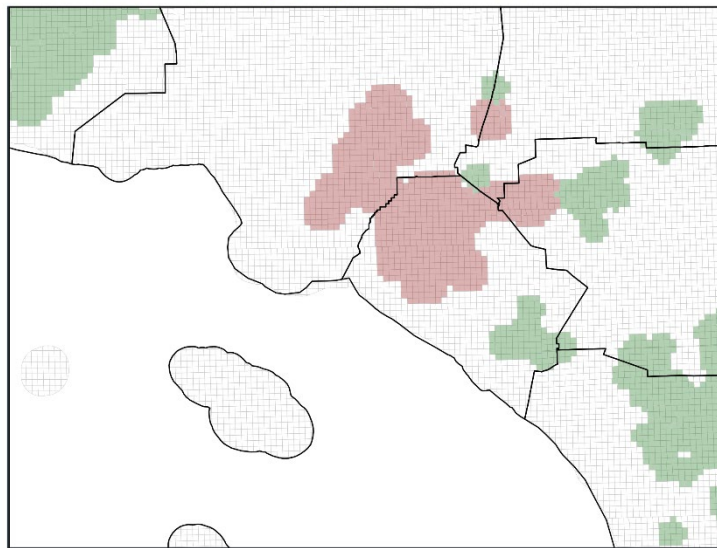
1. The threshold of apparent HLB positivity rate for a Section Township Range grid (STR) should be **3 to 5%** when averaged over the last three years. A lower threshold for regions with low commercial citrus activities and a higher threshold for regions with high commercial citrus activities.
2. An STR with **< 10 HLB detections** over a consecutive three-year period cannot be declared hotspot.
3. Any STR that is declared a hotspot should have a **halo of 3 STRs** (3-mile radius), also declared hotspots.

Agricultural and Urban Interface Definition:

4. However, no area within **3 miles of commercial citrus** should be declared hotspot. This area of 3 miles of commercial citrus is defined as the agricultural and urban interface.
5. Commercial citrus is defined as groves with 5 or more acres, or groves within one mile of other groves where the **combined acreage is 5 or more acres**.

Figure 1. Current Hotspot and Agricultural and Urban Interface Area in Southern California

Thresholds - Positivity: 3% | Positive Trees: 10





California Department of Food & Agriculture Plant Pest Diagnostics Center HLB Testing Program 2025

Total number of plant and ACP samples per month – Fig. 1a, Fig1b
Number of samples tested for HLB per year from 2008 –2025 – Fig. 2
Tally of positive detections by county and city – Tables 1a-1d.
Number of detections yearly from 2012-2025– Table 2
Tally of positive samples from risk-based and HLB response surveys – Table 3
If you have any questions, please call or email me at 916-738-6710 lucita.kumagai@cdfa.ca.gov.

Fig 1a. 2025 -
Total number
of plant and
ACP samples
submitted
per month.

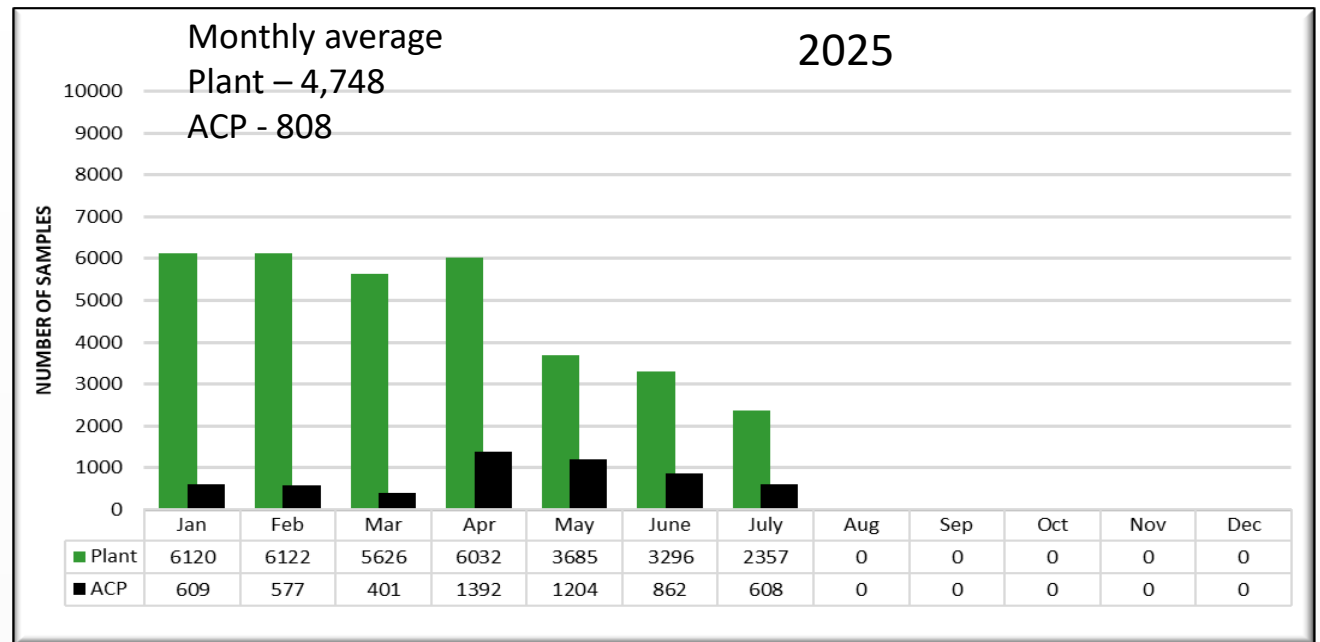


Fig 1b. 2024 -
Total number
of plant and
ACP samples
submitted
per month.

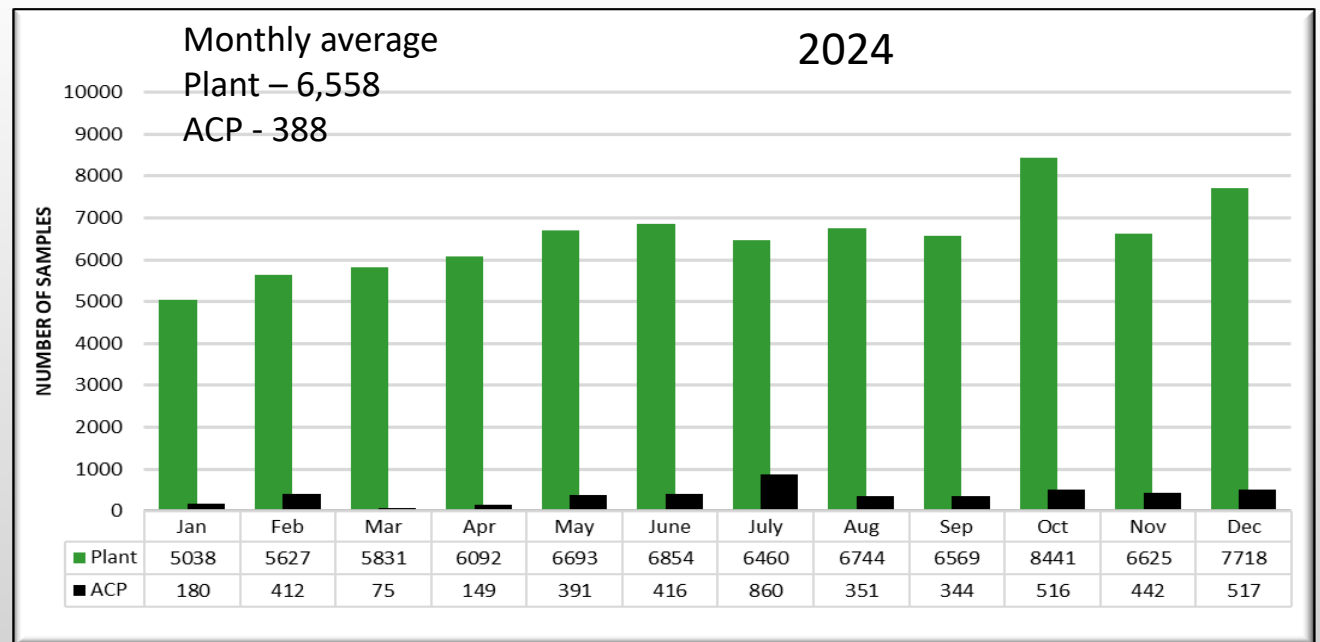
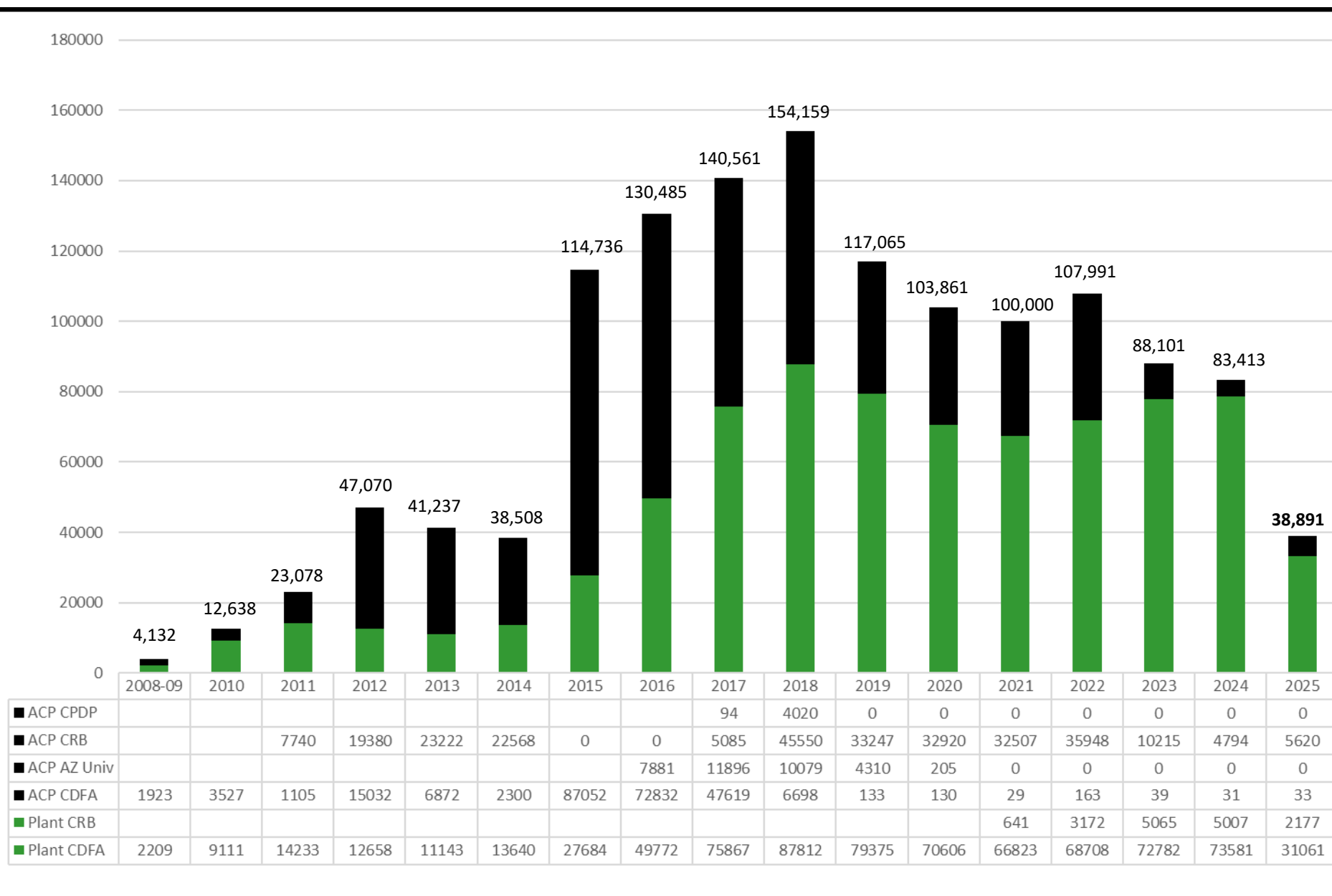


Fig 2. Number of samples tested for HLB per year from 2008 – 2025.



Combined total of plant and ACP samples tested from 2008 – 2025 is 1,345,926

Tables 1a-1d. Tally of positive sites, positive trees, and CLas+ ACP samples by city and county as of 8/07/2025.

2012-2025	# Sites	# Trees	# ACP samples
Grand Total	6425	10163	912

Orange County Positives			
City	# Sites	# Trees	# ACP samples
Garden Grove	762	1348	125
Santa Ana	761	1266	98
Anaheim	1078	1891	176
Westminster	369	634	23
Orange	347	514	46
Tustin	51	65	10
Fountain Valley	15	22	3
Huntington Beach	27	30	2
Placentia	93	128	15
La Habra	13	20	1
Fullerton	19	23	10
Yorba Linda	83	214	17
Irvine	171	218	5
Costa Mesa	113	159	4
Brea	35	57	1
Buena Park	9	16	2
Cypress	6	2	5
Stanton	5	6	1
Midway City	12	26	0
Los Alamitos	1	0	1
Villa Park	3	6	0
Newport Beach	4	4	0
Mission Viejo	39	45	5
Lake Forest	2	2	0
Coto De Caza	4	5	1
Rancho Santa Margarita	1	4	0
Total	4023	6705	551

Los Angeles County Positives			
City	# Sites	# Trees	# ACP samples
Whittier	238	290	52
Pico Rivera	367	558	74
Montebello	82	113	2
San Gabriel	93	125	9
Rosemead	50	69	7
Paramount	28	35	5
La Mirada	53	72	6
La Puente	58	70	9
Norwalk	16	13	5
Cerritos	7	9	5
Hacienda Heights	5	5	1
Lakewood	5	6	0
Duarte	177	271	6
El Monte	73	106	8
South El Monte	22	43	4
Alhambra	6	7	0
Temple City	12	11	2
Compton	1	1	0
Glendora	1	0	1
South Gate	10	10	6
Long Beach	14	23	3
Los Angeles	8	6	2
Downey	28	35	5
Carson	4	3	1
Monrovia	45	65	1
Rowland Heights	2	0	2
Pomona	11	14	2
Artesia	7	8	0
Bellflower	5	5	0
Monterey Park	1	1	0
West Covina	2	1	1
City of Industry	1	2	0
Claremont	1	0	1
Santa Fe Springs	2	1	1
Azusa	8	16	2
Covina	2	1	1
Commerce	4	5	0
San Dimas	1	1	0
Irwindale	1	1	1
Total	1451	2002	225

Riverside County Positives			
City	# Sites	# Trees	# ACP samples
Corona	278	414	39
Riverside	53	71	14
Eastvale	2	2	0
Jurupa Valley	40	68	4
Moreno Valley	1	1	0
Norco	6	11	0
Hemet	1	0	1
Perris	2	2	0
Murrieta	1	0	1
Total	384	569	59
San Bernardino County Positives			
Rancho Cucamonga	13	28	5
Montclair	23	23	9
Colton	6	11	3
San Bernardino	3	2	1
Ontario	333	515	23
Fontana	30	47	9
Chino	23	33	4
Total	431	659	54
San Diego County Positives			
Fallbrook	2	1	1
Oceanside	4	9	4
Pauma Valley	1	0	1
Vista	1	0	1
San Diego	47	75	0
Valley Center	10	24	2
Total	65	109	9
Ventura County Positives			
Santa Paula	71	119	14
Total	71	119	14

Table 2. Positive detections by year as of 8/01/2025

Positive C Las Detections by Year			
Year	# Sites	# Trees	# ACP samples
2012	1	1	1
2013	0	0	0
2014	0	0	0
2015	10	10	3
2016	13	19	3
2017	295	269	116
2018	422	699	82
2019	532	756	75
2020	362	488	44
2021	385	598	59
2022	884	1342	166
2023	1817	2965	229
2024	1226	2189	90
2025	478	827	44
Total	6425	10163	912

Table 3. Tally of positive samples from risk-based and HLB response surveys.

Sample type	Trees		ACP	
Risk-based Survey	670	7%	543	60%
HLB Response	9493	93%	369	40%
Total	10163	100%	912	100%

County Monthly Activity Report
October 2024 - June 2025

County	FY 2024-25 Budget Amount	Percent Expended	CA's Issued	Grower Inspections	Transporter Inspections	Packer/Processor Inspections	Fruit Seller Inspections	Harvester/FLC Inspections	Regulatory Incidents	NOVs Issued	NOPAs
Fresno	\$125,000.00	87%	51	0	731	0	0	0	0	26	0
Imperial	\$40,000.12	100%	3	32	29	1	0	0	0	0	0
Kern	\$70,000.00	89%	50	4	497	10	0	0	0	2	0
Kings	\$10,121.50	78%	0	0	0	62	6	0	4	0	0
Los Angeles	\$149,999.85	75%	1	60	0	0	380	0	1	0	0
Monterey	\$16,834.54	65%	0	51	0	0	0	0	0	0	0
Orange (*3)	\$55,000.00	99%	2	35	0	0	1	3	0	0	0
Riverside (*1)	\$499,966.28	55%	21	62	485	6	36	1	2	4	0
San Bernardino	\$14,520.18	62%	8	14	1	18	52	0	0	1	0
San Diego	\$500,000.00	86%	22	140	118	63	33	0	1	8	0
San Luis Obispo	\$9,279.65	62%	5	0	0	0	0	0	0	0	0
Santa Barbara	\$12,838.28	70%	10	10	5	0	31	0	0	1	0
Tulare	\$410,019.81	73%	134	1	2,057	82	18	0	0	71	2
Ventura	\$220,008.54	65%	29	3	101	20	0	1	1	1	0
Total	\$ 2,133,588.75	74%	336	412	4,024	262	557	5	9	114	2

(*#) = number of invoices missing from reporting period

Citrus Pest and Disease Prevention Committee Regional Working Group

N. McRoberts, J. Gorden, E. Rabe, M. Klein, I. Milosavljevic, C. Boisseranc, K. Ball, J. Gless

Current California Department of Food and Agriculture Activities:

	Northern California ¹	San Joaquin Valley	Central Coast ²	Southern Coast ³	San Bernardino and West Riverside	Los Angeles and Orange	Desert ⁴	San Diego
Huanglongbing (HLB) and <i>Candidatus Liberibacter Asiaticus</i> (CLAs)+ Asian Citrus Psyllids (ACP) Detection Response	✓	✓	✓	✓	✓	✓	✓	✓
ACP Detection Response (Commercial)	✓	✓	✓	✗	✗	✗	✗	✗
ACP Detection Response (Residential)	✓	✓	✓	✗	✗	✗	✗	✗
Biocontrol (Commercial)	✗	✗	✗	✗	✗	✗	✗	✗
Biocontrol (Residential)	✓	✓	✓	✓	✓	✓	✓	✓
Commodity Survey	✓	✓	✓	✓	✓	✓	✓	✓
Grove Trapping	✓	✓	✓	✗	✗	✗	✗	✗
Residential Multi-Pest Survey	✓	✓	✓	✓	✓	✓	✓	✓
Residential Trapping	✓	✓	✓	✗	✗	✗	✗	✗

1. Northern California includes counties north of Merced, including Santa Clara.

2. Central Coast region includes Monterey, San Benito, and San Luis Obispo.
3. Southern Coast region includes Santa Barbara and Ventura.
4. Desert region includes Imperial and Riverside East.

Regional Working Group Recommendations:

Except potentially adding limited trapping in the agricultural/urban interface in Southern California, the regional working group did not recommend the addition or removal of activities beyond what CDFA is currently performing. The group, however, recommended modifications to the protocols for existing activities. Specific recommendations are provided below.

1. **Northern California:** Release biocontrol agents in residential areas where breeding populations are found and around ACP detection response areas. Continue to optimize residential trapping by placing traps in higher-risk areas only.
2. **San Joaquin Valley:** Release biocontrol agents in residential areas where breeding populations are found and around ACP detection response areas.
3. **Central Coast:** Release biocontrol agents in residential areas where breeding populations are found and around ACP detection response areas.
4. **Southern Coast:** Dr. McRoberts, Dr. Morgan, and Dr. Milosavljevic will propose locations for sentinel trapping, preferably in the agricultural and urban interface. Consider replacing calendar-based commercial grove treatments with ACP detection response treatments.
5. **San Bernardino, West Riverside, Orange, and Los Angeles:** Perform biocontrol activities in agricultural/urban interface. Conduct residential multi-pest survey activities in non-core areas. Dr. McRoberts, Dr. Morgan, and Dr. Milosavljevic will propose locations for sentinel trapping.
6. **Desert:** Perform biocontrol and multi-pest survey activities in the agricultural/urban interface. Consider replacing calendar-based commercial grove treatments with ACP detection response treatments.
7. **San Diego:** Perform multi-pest survey activities in the agricultural/urban interface. Consider replacing calendar-based commercial grove treatments with ACP detection response treatments. Grove trapping may be considered as an activity conducted by the Pest Control District. Dr. McRoberts, Dr. Morgan, and Dr. Milosavljevic will propose locations for sentinel trapping.

HLB Treatment Updates



Southern District

September 11, 2025

Updates

- Delimitation treatments were conducted in the following areas:
 - Coto De Caza and Trabuco Canyon in Orange County
 - Perris and Riverside in Riverside County
 - Valley Center in San Diego County
 - Treated Find Site properties in 12 cities
- Public meetings to conduct treatments:
 - Los Angeles and Orange Counties: September 16
 - Riverside and San Bernardino Counties: Aug 12

HLB Delimitation Treatments- 250m

Areas	Total Properties	Properties Treated	No Host Properties	Refusal/ No Contact
Coto De Caza	24	12	12	0/0
Trabuco Canyon	160	104	47	7/2
Perris	2	2	0	0/0
Riverside	5	5	3	0/0
Valley Center	4	4	0	0/0

Treatments— Find Site Properties

Cities	Properties Treated	No Host Properties	Refusal/No Contact
Anaheim	11	0	0
Orange	1	0	0
Brea	2	0	0
Costa Mesa	1	0	0
Garden Grove	4	0	0
Mission Viejo	4	0	0
Westminster	1	0	0
Santa Ana	8	0	0
Chino	1	0	0
Montclair	1	0	0
Ontario	5	0	0

Southern District Staffing

Counties	Surveys	Treatments	Regulatory
Los Angeles and Orange	11	6	3
Riverside and San Bernardino	10	3	4
San Diego and Imperial	10	0	3
TOTAL	31	9	10

Counties	Permanent	Vacancies
Los Angeles and Orange	23	1
Riverside and San Bernardino	18	1
San Diego and Imperial	14	0



**Central District Update
Operations Subcommittee Meeting
September 11, 2025**

Central District Update

- Since June 26, there were two ACP detections.
 - One adult ACP was confirmed on July 2, on a trap in a commercial grove in Monterey County.
 - No residential properties within the 50m. Citrus staff did not conduct treatment.
 - Citrus staff deployed delimitation traps, servicing 69 traps each week for one month.
 - Citrus staff released *Tamarixia* on July 20 and August 20.
 - No additional ACP have been detected.
 - A total of three adult ACP were confirmed on August 14, on two county regulatory traps at a packing house in Tulare County.
 - Growers were notified.
 - Citrus staff surveyed the 400m area and some plant samples were collected.
 - No additional ACP have been observed.
 - *Tamarixia* were released on nearby residential properties on August 20.





Central District Update

- Detection and grove trapping remains status-quo.
 - No current delimitations. Monterey delimitation traps are now serviced by the county.
 - FY 2025-26 County agreements will begin October 1.
- Multi-pest (residential) risk survey is on-going.
- Citrus commodity (commercial) surveys were completed for the spring, will resume in the fall.
- The E-Fund for the HLB delimitation in Ventura County was extended for another year! Expiration date is now June 30, 2026.



Total Properties Surveyed	Total Survey Refusals	Total Properties Treated	Total Treatment Refusals	Total HLB+ Trees	Total HLB+ Trees Removed	Total Tree Removal Refusals
3,518	22	1,323	32	119	115	0



Central District Update - Projects

Office	Survey	Trapping	Treatment
Fresno	5	5	0
Visalia	4	3	1
Shafter	3	2	1
Camarillo	7	0	2



Central District Update - Staffing

County	Total Perm Staff (current)	Pending Hiring (vacancies)	Hiring Status
Fresno County (Fresno)	10	N/A	N/A
Kern County (Shafter)	6	N/A	N/A
Tulare County (Visalia)	8	N/A	N/A
Tulare County (Visalia Regulatory)	2	N/A	N/A
Ventura County (Camarillo)	9	N/A	N/A



Northern District Update
Operations Subcommittee Meeting
September 11, 2025

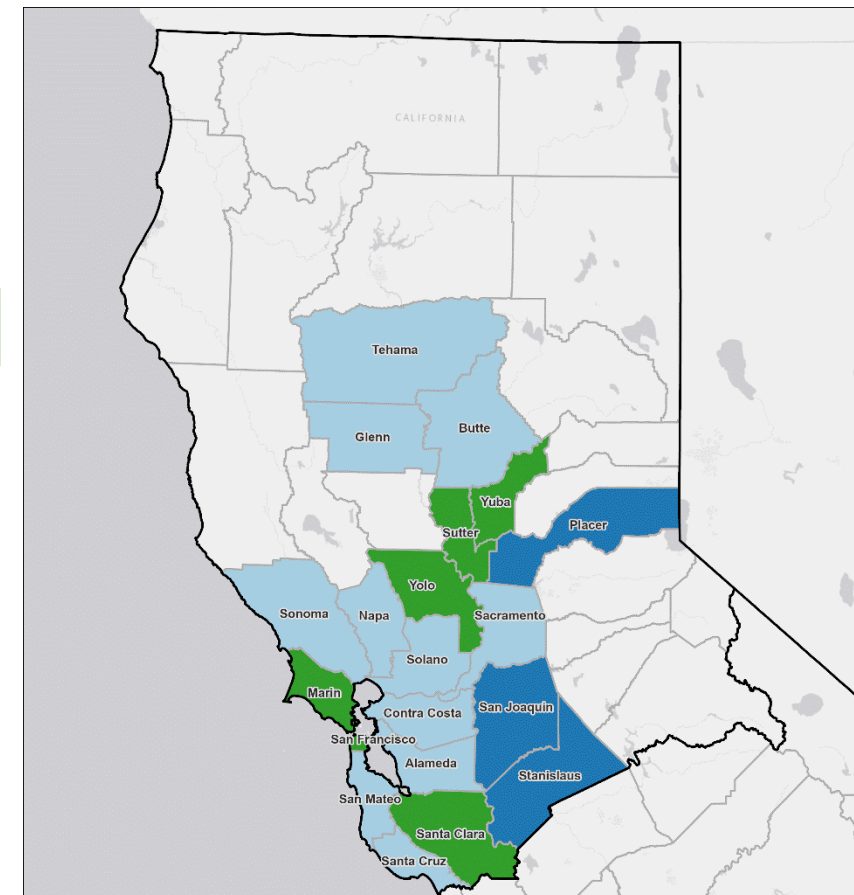
Northern District Update | ACP Trapping

General Detection

Entity	Type	Number of Counties	Number of Traps
County	Commercial	3	135
County	Residential (YR)	3	1351
County	Residential (W)	11	3090
State (CDFA)	Residential (W)	6	1378

New trapping agreements with counties will begin October 1, 2025

Agreement amounts have been reduced by a total of 20% (~\$220,000)



ACP Trapping

CDFA

County (Winter)

County (Year-round)

CPDPD Administrative District

Northern District Update | HLB Risk-Based Survey

2025 Cycle 1 Counties	
Alameda	Santa Clara
Contra Costa	*Santa Cruz
*Marin	*Solano
*Placer	*Sonoma
Sacramento	Stanislaus
San Francisco	*Tuolumne
San Joaquin	*Yolo
*San Mateo	

*Risk Survey Cycle completed

Overall, 90% of Cycle 1 is complete in Northern District



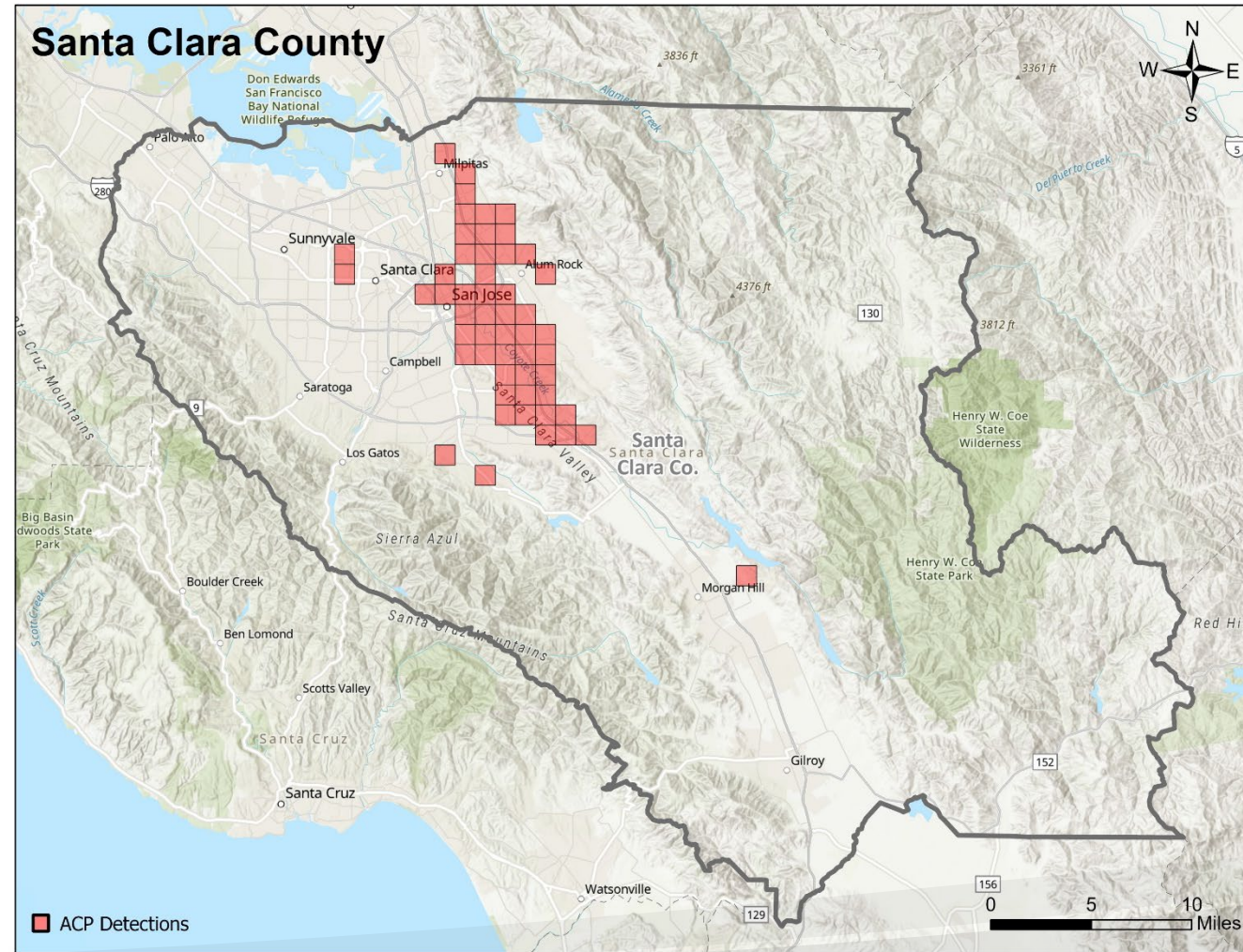
Northern District Update | Delimitation and Treatment

Santa Clara County

4 new detections since last Operations Subcommittee meeting on June 26, 2025 in San Jose

Treatment was conducted from June 24 – June 30

- 56 properties in treatment area (find site and adjacent)
- 26 properties with no hosts
- 2 no contact with homeowner/resident
- 1 refusal
- 27 total properties treated

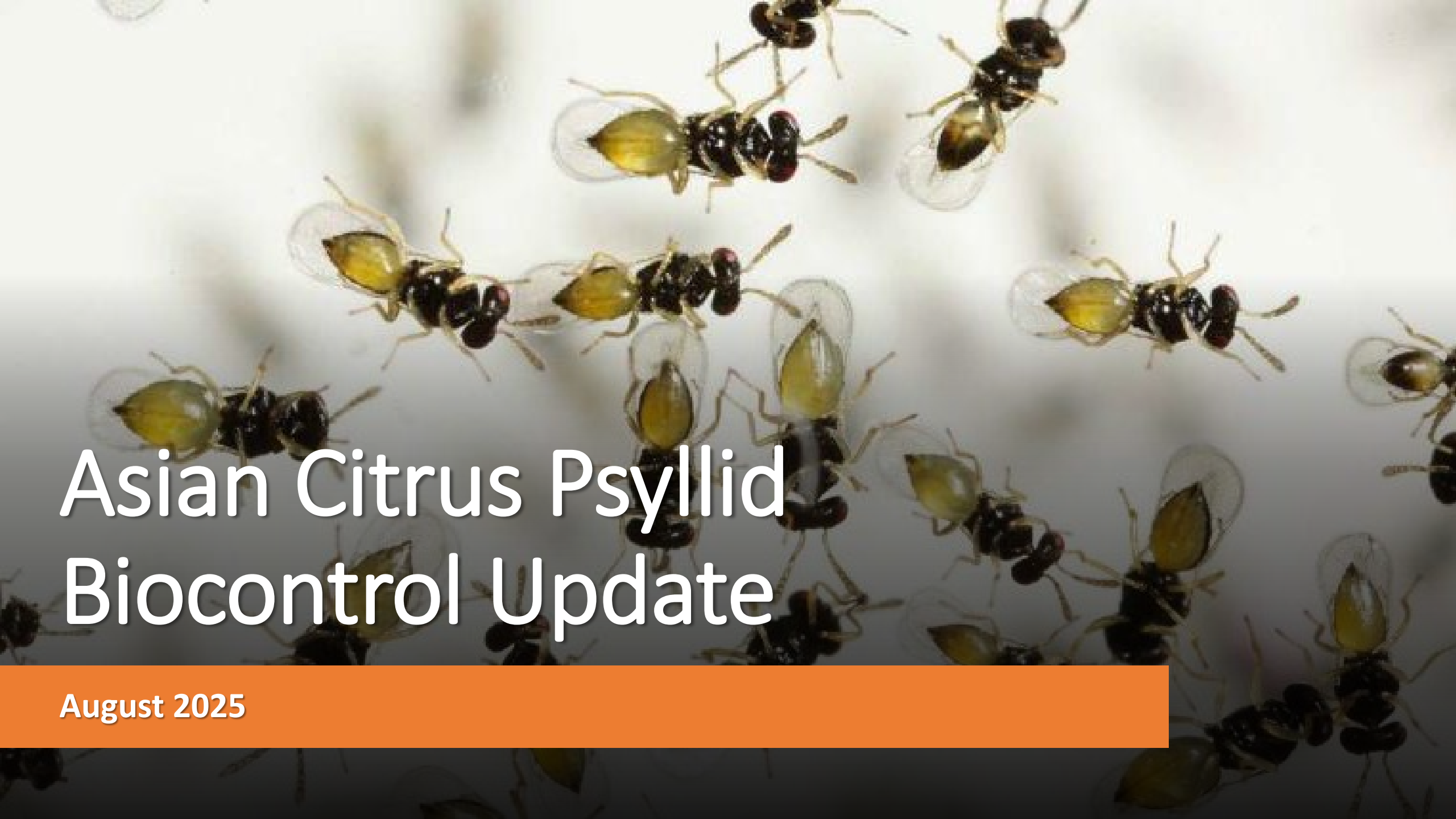


Northern District Update | Staffing



Activity	Staffing
Data Analysis (Statewide)	4
Regulatory	2
Trapping	3
Survey	5





Asian Citrus Psyllid Biocontrol Update

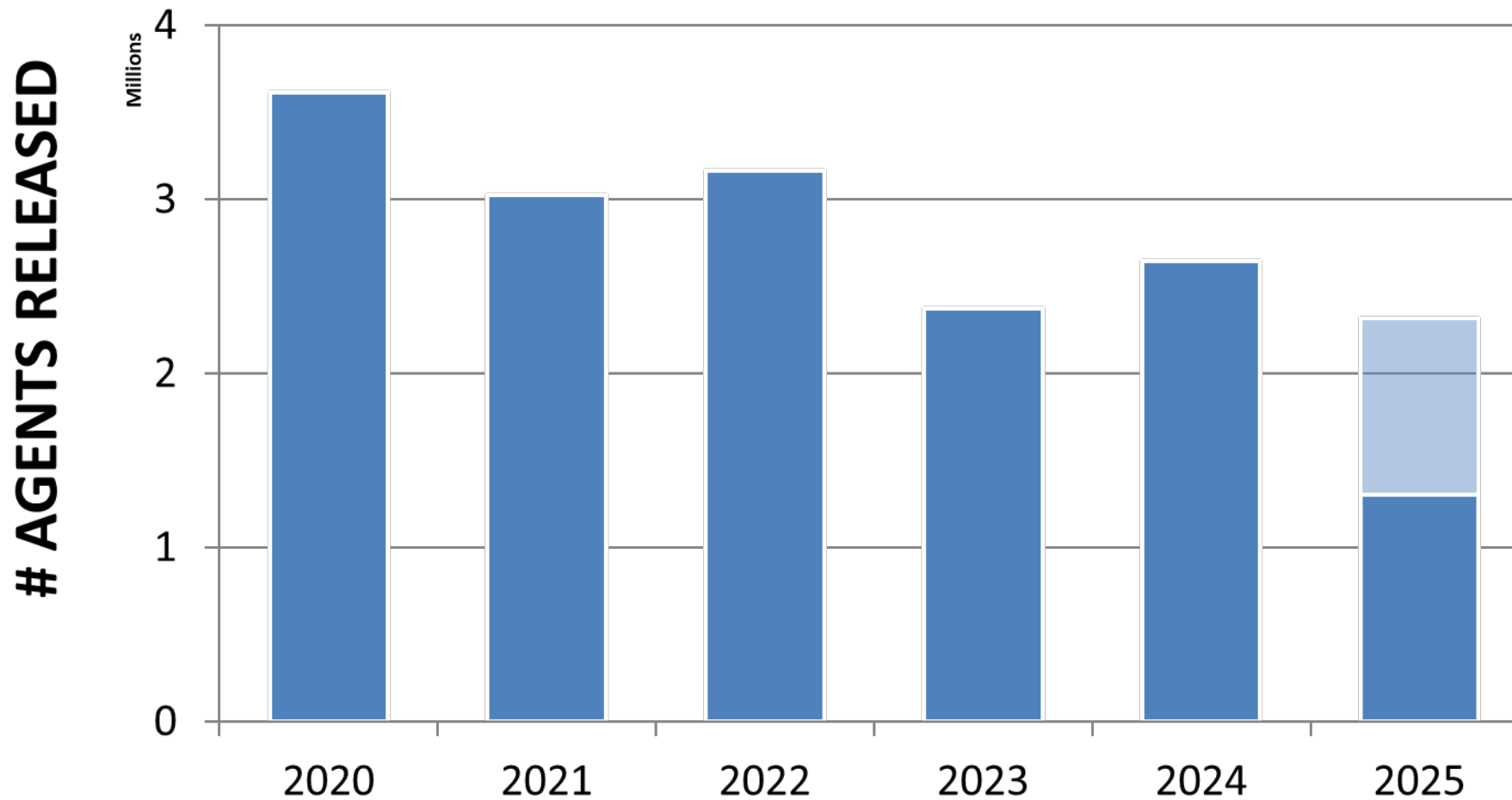
August 2025

Biological Control Agent Releases

County	Releases Previous Month	Releases, 2025	Releases 2011-2025	
	July 2025	<i>T. radiata</i> Released	<i>T. radiata</i> Released	<i>D. aligarhensis</i> Released
Imperial	8,000	43,000	756,343	10,295
Los Angeles	74,800	344,900	9,155,984	107,734
Orange	38,000	336,700	7,287,416	71,179
Riverside	58,400	136,000	4,495,702	127,739
San Bernardino	17,000	119,200	2,634,315	57,252
San Diego	21,400	119,700	3,596,964	86,403
Ventura	16,100	97,700	2,734,206	16,830
Santa Barbara	3,600	31,800	484,982	12,012
Kern	0	6,400	423,664	0
Santa Clara	4,400	58,100	421,137	0
Placer	0	0	3,400	0
San Luis Obispo	0	4,800	147,000	0
Tulare	0	0	71,800	0
Fresno	0	0	35,000	0
Monterey	0	3,400	32,400	0
Madera	0	0	5,600	0
Arizona	0	0	253,500	0
Mexico	0	0	306,000	0
TOTAL	241,700	1,301,700	32,845,413	489,444
	TOTAL (2011-2025):			33,334,857



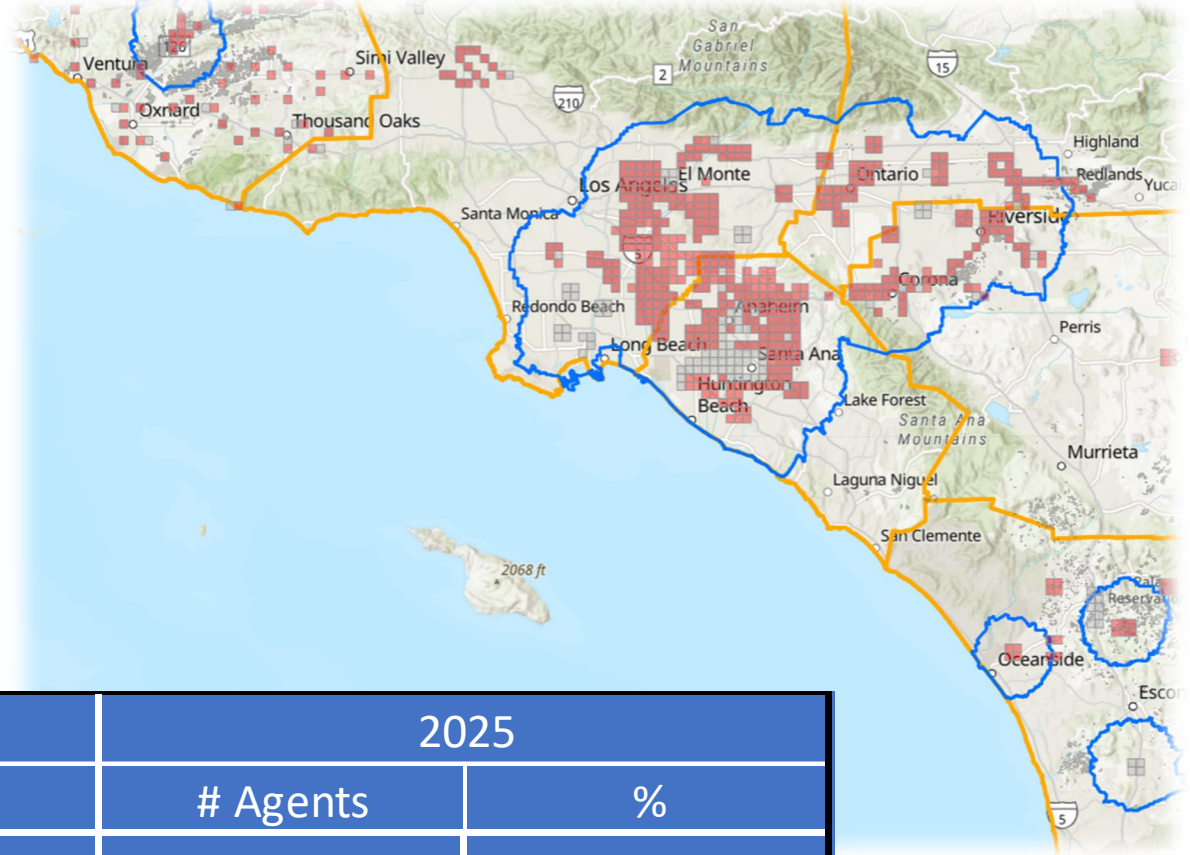
Biological Control Agent Releases



Biological Control Agent Release Areas

Releases in:

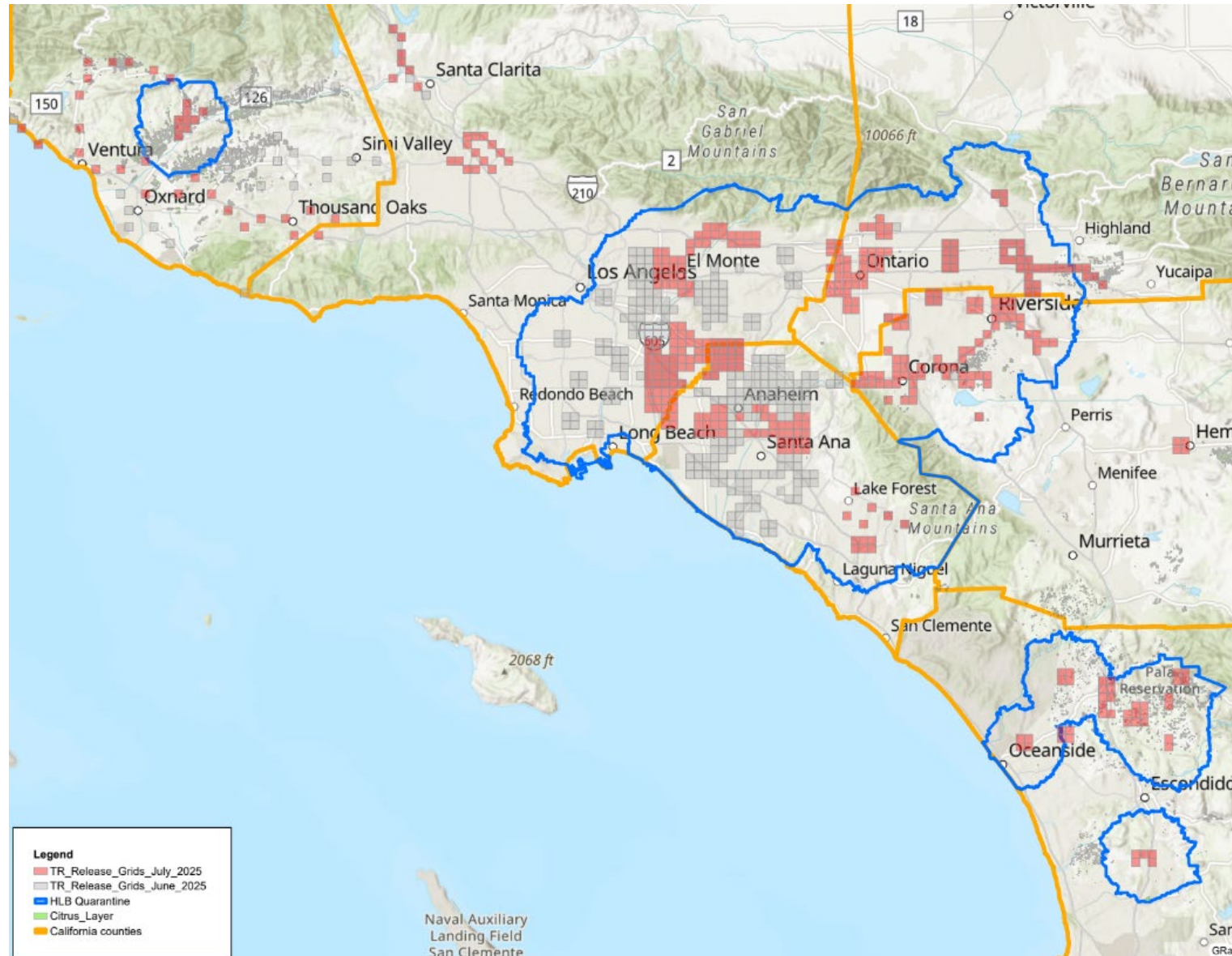
- HLB Quarantine areas
- Borders
- Trade routes
- Area-wide management
- Newly established ACP



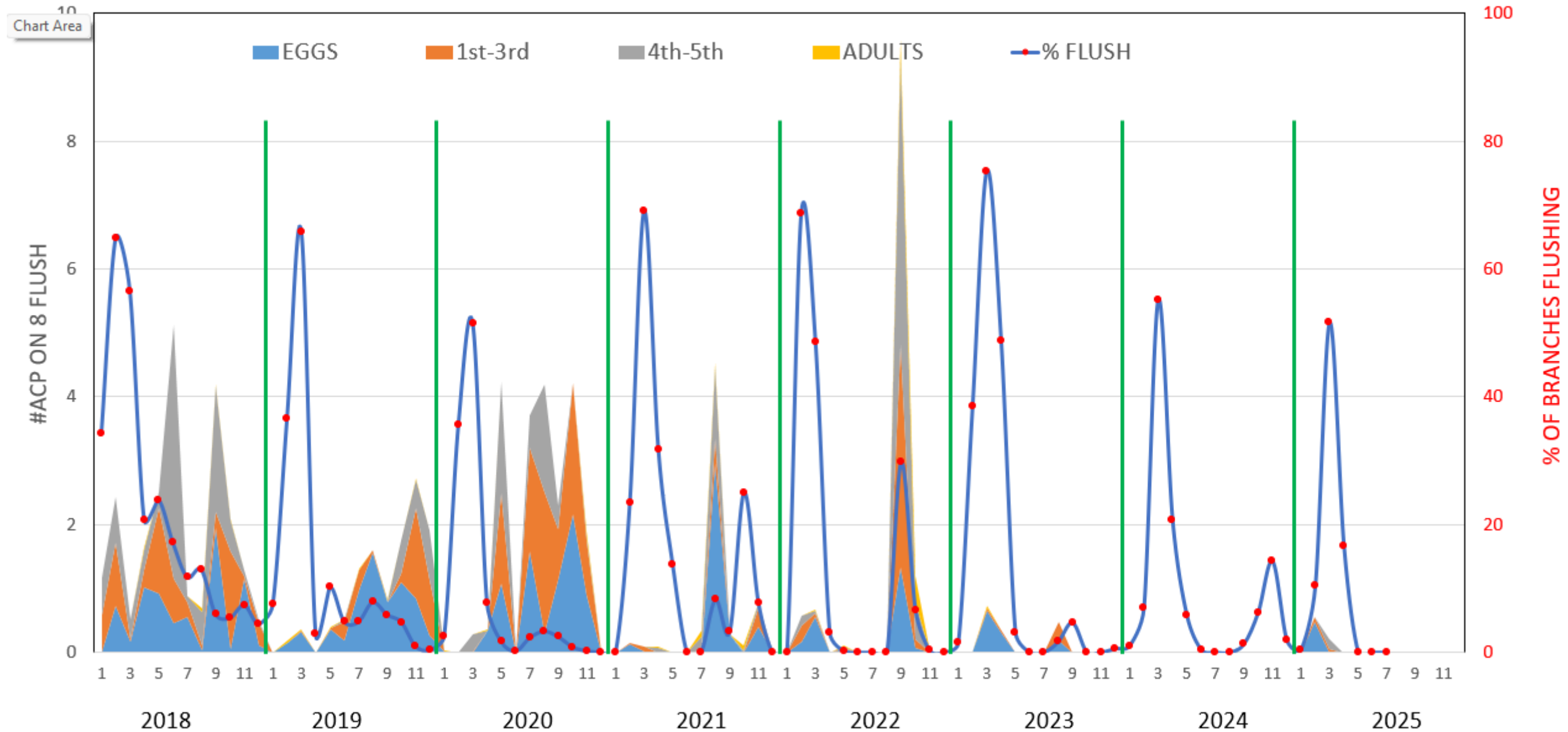
Release Type	2024		2025	
	# Agents	%	# Agents	%
Borders	57,800	2	43,000	3
HLB	2,216,860	84	1,056,500	81
New	105,200	4	72,700	6
Routes	263,800	10	129,500	10



Releases within / around HLB Quarantine areas



Region-Wide Urban Monitoring 2015 - Present



Outreach Overview & Update

Sept. 11, 2025



CITRUS PEST & DISEASE
PREVENTION PROGRAM



NST's History with the CPDPP

For more than 17 years, NST has served alongside the California citrus industry – first through work with California Citrus Research Board and later as the outreach contractor for the Citrus Pest & Disease Prevention Program.

KEY AUDIENCES



Homeowners



Citrus Industry



Elected Officials



Outreach Strategies

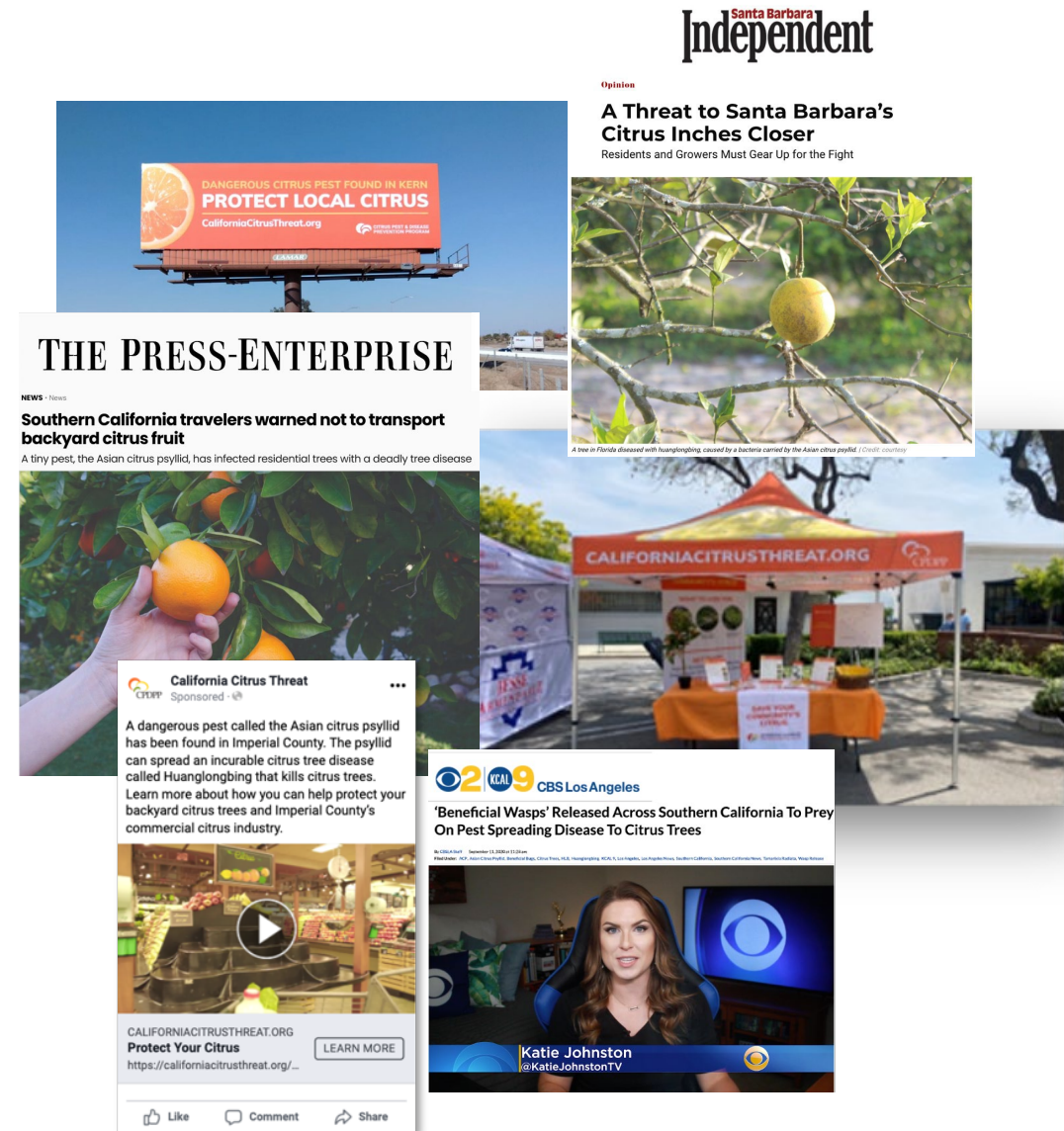
- Drive behavior change via outreach and communication by helping target audiences recognize the ACP and HLB as a problem and perceive their involvement in addressing the threat of the ACP and HLB.
- Saturate favored information-sources of target audiences and curate outreach with a regional approach.
- Forge strategic partnerships to tap into trusted third-party credibility.

Residential Outreach Overview

- Desired outcomes:
 - Homeowners in California are aware of and understand the threat of HLB to their citrus trees.
 - Homeowners know to protect their backyard citrus by:
 - Inspecting their citrus trees and reporting ACP sightings and HLB symptoms to the CDFA pest hotline.
 - Cooperating with ag officials by allowing them access to their property to inspect/treat.
 - Removing citrus trees that are unwanted or uncared for to prevent more hosts for HLB.

Residential Outreach Overview

- Tactical approach:
 - Earned media outreach.
 - Advertising and public service announcement distribution.
 - Social media and website management.
 - Influencer partnerships.
 - Community event attendance.
 - Targeted outreach via direct mail.
 - Collateral development.
 - Multicultural outreach.

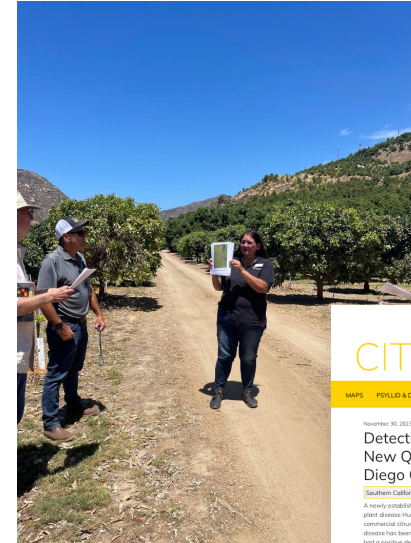


Industry Outreach Overview

- Desired outcomes:
 - The commercial citrus industry is aware of and understands the threat of HLB to California's groves.
 - The citrus industry takes action to protect commercial groves by:
 - Participating in coordinated treatments or regular treatments for the ACP.
 - Following regulations.
 - Following best management practices.

Industry Outreach Overview

- Tactical approach:
 - Trade media outreach.
 - Training workshops.
 - Website and e-newsletter management.
 - Industry material development.
 - Tradeshows and events.
 - Regional grower meetings.
 - Partnerships with trusted and influential advisers to the commercial citrus industry like PCAs, PCDs, Farm Bureaus, etc.



Elected Official Outreach Overview

- Desired outcomes:
 - Local elected and appointed officials understand the threat of HLB to backyard citrus and commercial citrus groves and are equipped with consistent messaging.
 - City and county officials agree to partner with the CPDPP to help educate their communities on the importance of working with agricultural officials and monitoring trees for signs of the ACP and HLB.
 - Officials consider CPDPP contacts as their primary resource for ACP and HLB information and updates.

Elected Official Outreach Overview

- Tactical approach:
 - Coordinate briefings and present to city officials and staff to educate and inform them on the dangers of the ACP and HLB.
 - Proactively provide presentation slides, messaging and collateral materials to officials in the HLB quarantine and neighboring jurisdictions.
 - Develop social media and newsletter content to distribute to elected officials to continue to share key messages about the ACP and HLB.
 - Recognize city and county officials who demonstrate leadership in the fight against the ACP and HLB with the Citrus Hero Award.
 - Events and tradeshow.





Other Activities

- Crisis management.
- Strategic planning.



Recent Outreach Updates



Residential Outreach Activities

Capitalizing on Peak Travel Times to Urge Caution

- Labor Day Weekend Don't Move Citrus integrated campaign:
 - Press release distribution.
 - Audio news release distribution.
 - Social media targeted ads.



CALIFORNIANS CAUTIONED AGAINST TRAVELING WITH CITRUS FRUIT OR PLANT MATERIAL OVER LABOR DAY WEEKEND

Residents Could Unknowingly Spread Deadly Citrus Pest and Disease When Traveling

Traveling for Labor Day weekend?

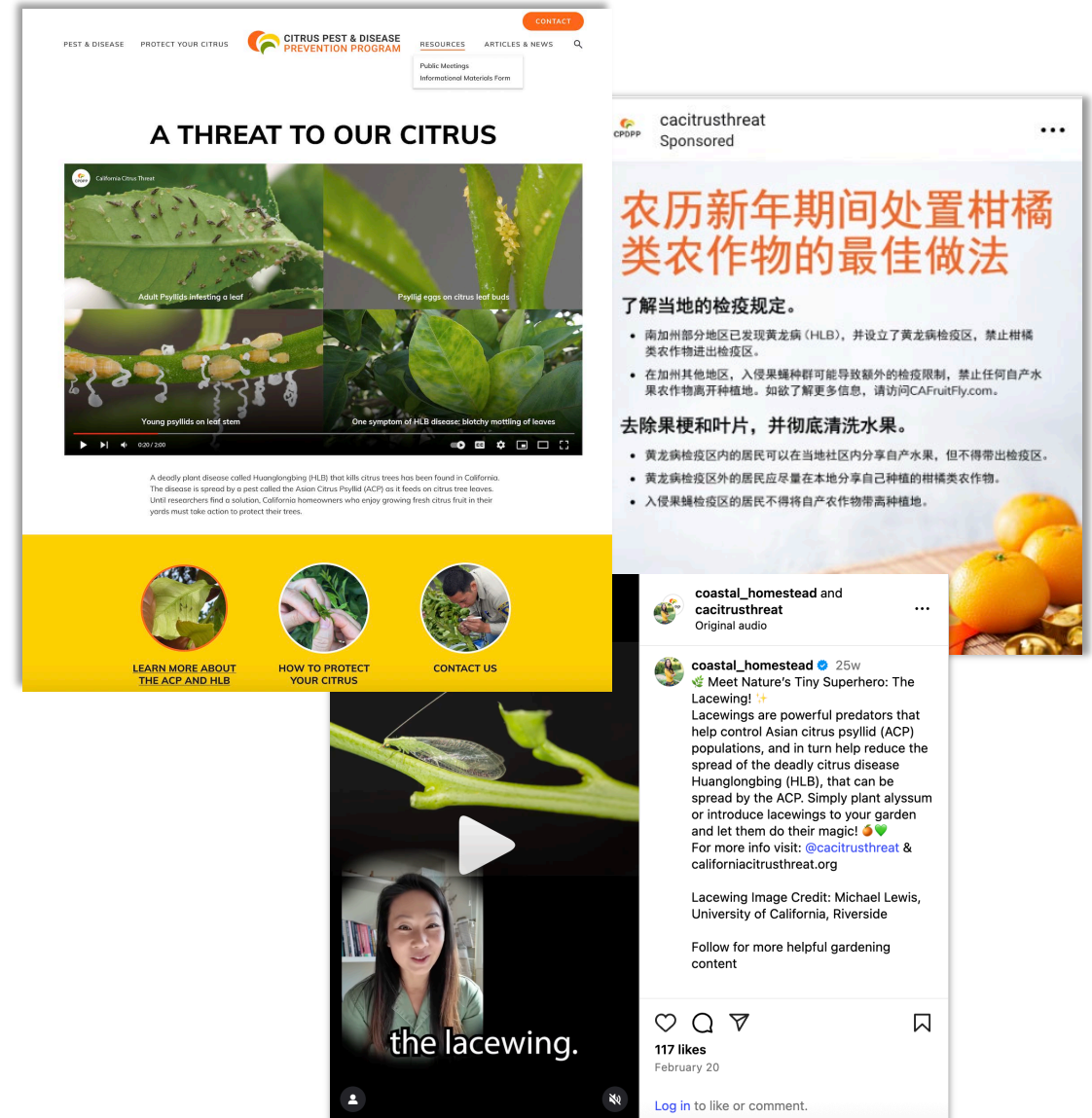
**DON'T MOVE
CITRUS.**



CaliforniaCitrusThreat.org

Reaching Residents Where They Consume Information Online

- CaliforniaCitrusThreat.org refresh:
 - Revamped functionality, design and content.
 - Collateral order form re-launch.
- Influencer series on beneficial insects.
- Lunar New Year social media ads:
 - Chinese, Vietnamese and English targeted ads.



Empowering Hyperlocal Communities and Advocates

- Statewide Master Gardener webinar:
 - Focused on the state of the ACP and HLB and regulatory best practices for residents.
 - 174 attendees.
- San Diego County Grower and Resident meeting:
 - Held in cooperation with the Mission Resource Control District.
- CDFA-led activities:
 - Nevada County Master Gardener best practices presentation:
 - 60 touch points.
 - No cost to the CPDPP.
 - Placer County Master Gardener Spring Open House:
 - 50 touch points.
 - No cost to the CPDPP.



Connecting with Residents In-Person

- Coordinated the Division's presence at:
 - Highland Citrus Harvest Festival.
 - California Citrus State Historic Park Citrus Festival.
- CDFA-led activities:
 - Ventura County Fair.
 - Secured from USDA and other program partners citrus swag and seed packs to be handed out at events.





Industry Outreach Activities

Engaging the Industry

- Keeping industry members up to date on critical information:
 - E-blasts via Citrus Insider:
 - Ventura County ACP-HLB Task Force 2025 Grower Meeting
 - April 10 and 11 San Diego County Grower Meeting – HLB Quarantine Expands in San Diego County
 - April 30 – San Diego County Grower and Resident Meeting: HLB Quarantine Updates
 - Oriental Fruit Fly Quarantine Lifted in Orange County
 - Mediterranean Fruit Fly Eradicated from Alameda County
 - Citrograph's summer edition article features an update on the Division's revised strategic plan.
 - HLB in a Grove preparedness video.
- One-on-One Industry Engagement:
 - CAPCA Spring Summit.
 - CCM Citrus Showcase.





Elected Official Outreach Activities

Keeping the ACP and HLB Top of Mind at the City and Local Level

- Coordinated Division's presence at:
 - Independent Cities Association Seminar
 - Southern California Association of Governments Regional Conference and General Assembly
 - California Contract Cities Association Annual Municipal Seminar





Upcoming Outreach Activities

- Goleta Lemon Festival.
- Fig Fest on the River.
- CAPCA Annual Conference.
- Native American Day at the Capitol.
- Farm to Fork.
- Citrograph article for the winter edition.
- Media-ready interview and b-roll package.
- California State Association of Counties Annual Meeting.
- League of Cities Conference and Expo.

PPA FY26-27 Proposal

Submitted for:

- Goal 5 Outreach and Education – \$572,590.75
- Goal 1s Plant Pest and Disease Survey – \$667,753





Thank You



CITRUS PEST & DISEASE
PREVENTION PROGRAM