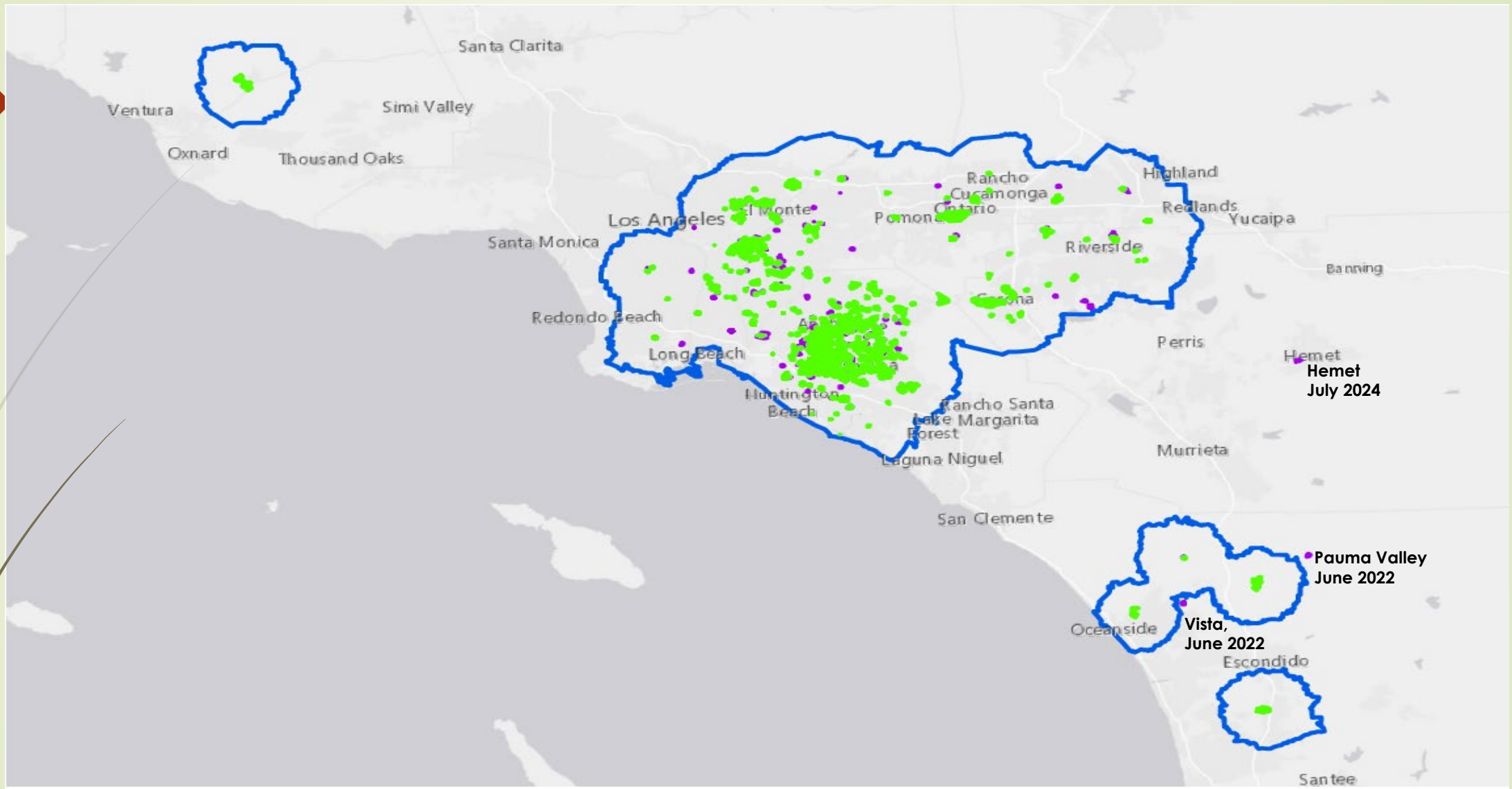








# HLB Detection, Delimitation, and Tree Removal Updates

Southern District

October 16, 2024



HLB Quarantine and  
Treatment Area  
9/27/2024

-  HLB Quarantine Area
-  HLB Treatment Area
-  Mandatory
-  Non-mandatory

0 5 10  
Miles

  
CITRUS PEST & DISEASE  
PREVENTION DIVISION

  
CALIFORNIA DEPARTMENT OF  
FOOD & AGRICULTURE

## HLB Detection Updates

- An hlb positive tree was detected at a residential property on September 9 in the city of Fallbrook, San Diego County.
  - A new 5-mile quarantine has been established that combined the existing two quarantine areas (Oceanside and Valley Center).
  - The positive mandarin tree was removed on September 17.
  - There are 43 parcels to be surveyed.
  - The delimitation survey has been completed.
  - The treatments started after the public meeting on October 2 and will continue in the area.
  - A grower meeting was held on September 25.
- A total of 676 positive trees were detected in the last three months (July, Aug, Sept).
  - 52% in Orange, 23% in Los Angeles, 10% in Riverside, 10% in San Bernardino, and 5% in San Diego.
- Multiple detections occurred in the neighborhoods of Pico Rivera, Irvine, Costa Mesa, Brea, Yorba Linda, Santa Ana, Anaheim, Orange, Duarte, Ontario, Corona, and Rancho Bernardo.

# HLB Delimitation Survey I

Areas	Total Properties	Properties Surveyed	No Host Properties	Refusals/No Contact-Pending	Completion Percentage
Duarte (2,7-18,21,27-29,33-35,38-43,48,53-57)	628	592	146	17/19	94%
Los Angeles (3)	15	15	3	1/1	100%
Brea (10-16)	71	53	24	4/18	75%
Yorba Linda (6-10)	147	129	65	12/6	88%
Irvine (36-37,42)	269	212	86	17/38	86%
Costa Mesa (20-21)	149	125	53	8/16	84%

## HLB Delimitation Survey II

Areas	Total Properties	Properties Surveyed	No Host Properties	Refusals/No Contact-Pending	Completion Percentage
Fallbrook (1-2)	43	38	6	0/5	88%
Rancho Bernardo (1-21)	926	884	467	24/5	95%
Hemet (1)	52	52	42	0/0	100%
Corona (57-71)	1,011	839	536	6/165	83%
Ontario (1,11,18,22,34,80-85)	746	541	288	16/189	73%
Riverside (11)	137	132	38	0/5	96%
Jurupa Valley (3,5)	31	31	25	0/0	100%

## HLB Positive Trees (July thru September)

County	Detected	Removed	Cumulative Pending
Los Angeles	155	104	62
Orange	349	237	259
San Bernardino	71	45	41
Riverside	69	27	66
San Diego	32	29	3
<b>TOTAL</b>	<b>676</b>	<b>442</b>	<b>431</b>



## California Department of Food & Agriculture Plant Pest Diagnostics Center HLB Testing Program 2024

Total number of plant and ACP samples per month – Fig. 1a, Fig1b

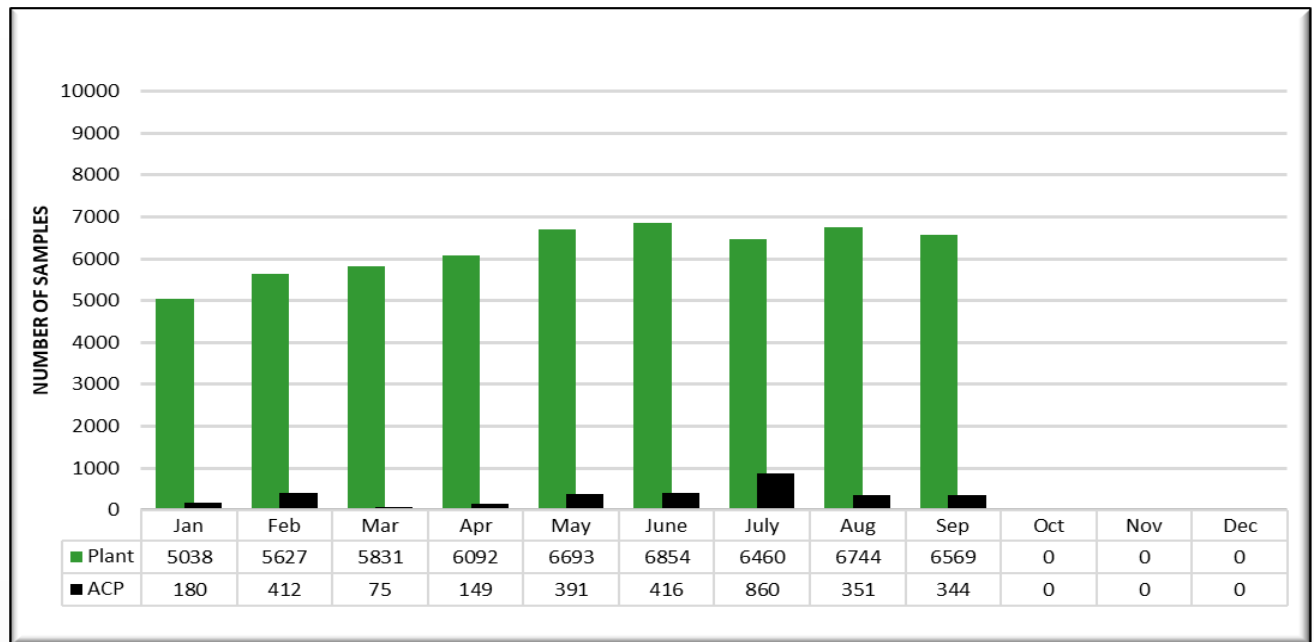
Number of samples tested for HLB per year from 2008 –2024 – Fig. 2

Tally of positive detections by county and city – Tables 1a-1d.

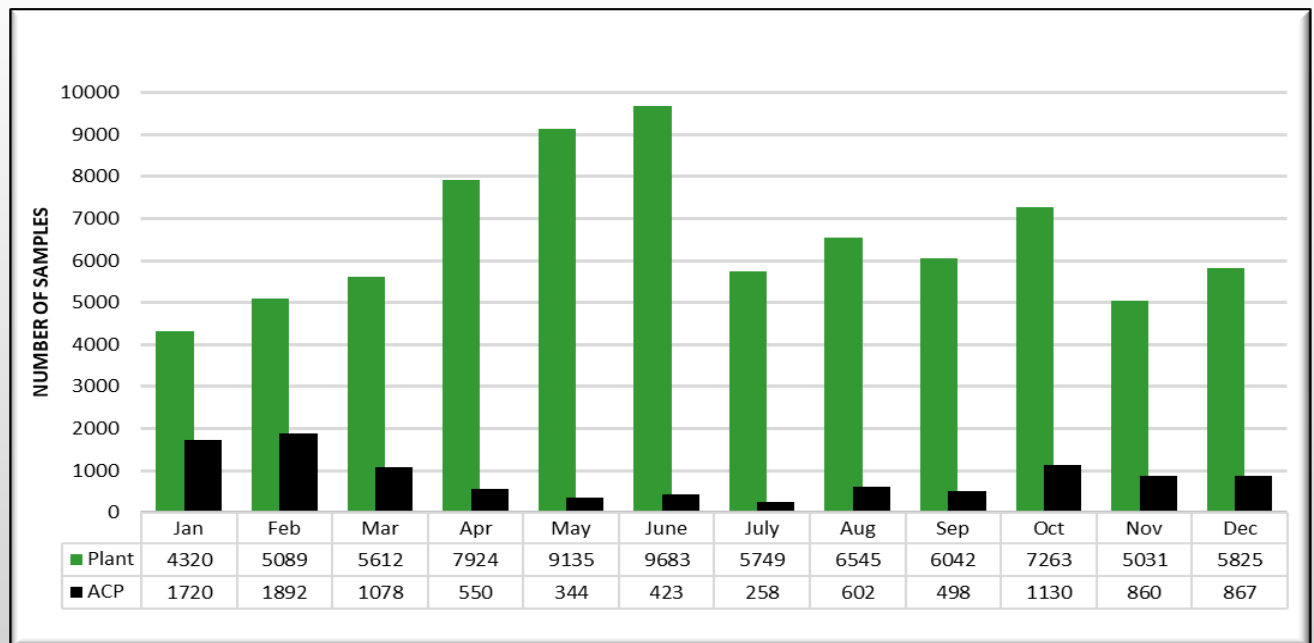
Number of detections yearly from 2012-2024– Table 2

If you have any questions, please call or email me at 916-738-6710 [lucita.kumagai@cdfa.ca.gov](mailto:lucita.kumagai@cdfa.ca.gov).

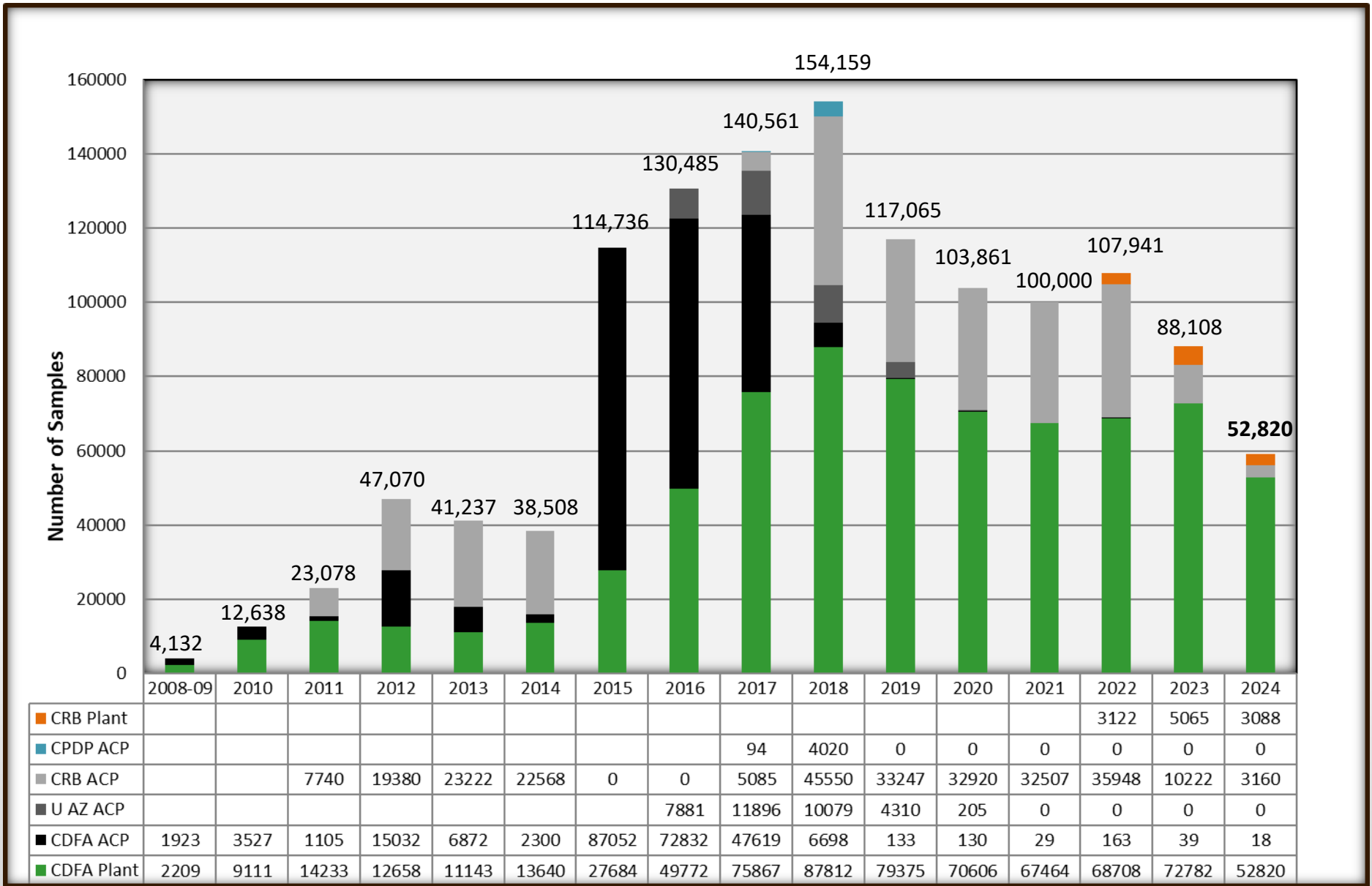
**Fig 1a. 2024 -**  
Total number  
of plant and  
ACP samples  
submitted  
per month.



**Fig 1b. 2023 -**  
Total number  
of plant and  
ACP samples  
submitted per  
month last  
year.



**Fig 2.** Number of samples tested for HLB per year from 2008 – 2024.



Combined total of plant and ACP samples tested from 2008 – 2024 is 1,282,665

# Tables 1a-1d. Tally of positive sites, positive trees, and CLas+ ACP samples by county and city as of 10/8/2024.

2012-2024	# Sites	# Trees	ACP sample
<b>Grand Total</b>	<b>5686</b>	<b>8836</b>	<b>845</b>

Orange County Positives			
City	# Sites	# Trees	# ACP samples
Garden Grove	733	1276	124
Santa Ana	728	1189	98
Anaheim	975	1696	167
Westminster	367	628	22
Orange	337	494	45
Tustin	50	64	10
Fountain Valley	15	22	3
Huntington Beach	27	30	2
Placentia	93	127	15
La Habra	7	8	1
Fullerton	19	23	10
Yorba Linda	61	68	11
Irvine	131	173	4
Costa Mesa	90	129	3
Brea	34	51	1
Buena Park	9	16	2
Cypress	5	1	5
Stanton	5	6	1
Midway City	12	26	0
Los Alamitos	1	0	1
Villa Park	2	2	0
Newport Beach	2	2	0
<b>Total</b>	<b>3703</b>	<b>6031</b>	<b>525</b>

Los Angeles County Positives			
City	# Sites	# Trees	# ACP samples
Whittier	211	256	47
Pico Rivera	236	335	66
Montebello	82	113	2
San Gabriel	90	123	8
Rosemead	50	69	7
Paramount	28	35	5
La Mirada	53	72	6
La Puente	50	60	9
Norwalk	15	12	5
Cerritos	7	9	5
Hacienda Heights	5	5	1
Lakewood	5	6	0
Duarte	166	257	7
El Monte	73	106	8
South El Monte	22	43	4
Alhambra	4	5	0
Temple City	12	11	2
Compton	1	1	0
Glendora	1	0	1
South Gate	10	10	6
Long Beach	8	9	3
Los Angeles	8	6	2
Downey	28	35	5
Carson	4	3	1
Monrovia	38	56	0
Rowland Heights	2	0	2
Pomona	10	13	2
Artesia	7	8	0
Bellflower	5	5	0
Monterey Park	1	1	0
West Covina	1	0	1
City of Industry	1	2	0
Claremont	1	0	1
Santa Fe Springs	2	1	1
Azusa	8	16	2
Covina	1	0	1
Commerce	2	2	0
San Dimas	1	1	0
<b>Total</b>	<b>1249</b>	<b>1686</b>	<b>210</b>

Riverside County Positives			
City	# Sites	# Trees	# ACP samples
Corona	226	323	35
Riverside	31	32	10
Eastvale	2	2	0
Jurupa Valley	33	53	4
Moreno Valley	1	1	0
Norco	4	9	0
Hemet	1	0	1
<b>Total</b>	<b>298</b>	<b>420</b>	<b>50</b>
San Bernardino County Positives			
Rancho Cucamonga	3	7	2
Montclair	17	13	7
Colton	6	11	3
San Bernardino	2	1	1
Ontario	253	407	22
Fontana	30	47	9
Chino	18	28	2
<b>Total</b>	<b>329</b>	<b>514</b>	<b>46</b>
San Diego County Positives			
Fallbrook	2	1	1
Oceanside	4	9	4
Pauma Valley	1	0	1
Vista	1	0	1
San Diego	46	74	0
Valley Center	5	19	2
<b>Total</b>	<b>59</b>	<b>103</b>	<b>9</b>
Ventura County Positives			
Santa Paula	48	82	5
<b>Total</b>	<b>48</b>	<b>82</b>	<b>5</b>

**Table 2.** Positive detections by year

<b>Positive Detections by Year</b>			
<b>Year</b>	<b># Sites</b>	<b># Trees</b>	<b># ACP samples</b>
2012	1	1	1
2015	10	10	3
2016	13	19	3
2017	295	269	116
2018	422	699	82
2019	532	756	75
2020	362	488	44
2021	385	598	59
2022	884	1342	166
2023	1817	2965	229
2024	965	1689	67
<b>Total</b>	<b>5686</b>	<b>8836</b>	<b>845</b>



# HLB Treatment Updates

Southern District

October 16, 2024



# Treatment Updates

- Delimitation treatments were conducted in the following areas:
  - Yorba Linda, Costa Mesa, Irvine, Brea, East Los Angeles, Montebello, Commerce, Pico Rivera, Duarte, South Gate, Corona, Ontario, and Rancho Bernardo.
- Public meetings to conduct treatments:
  - To treat delimitation areas in Riverside and San Bernardino counties: August 14, September 17, and October 22, 2024.
  - To treat delimitation areas in Los Angeles and Orange counties: August 7, September 3, and October 8, 2024.
  - To treat delimitation areas in San Diego County: August 13 and October 2, 2024.

# HLB Delimitation Treatments

Areas	Total Properties	Properties Treated	No Host Properties	Refusals/ No Contact	Completion
Corona (38,57-70)	761	331	394	13/30	95%
Ontario (1,11,29, 30-38,41,45, 77)	657	245	380	9/34	96%
Duarte (2-3, 6-10, 24-34, 38, 55)	725	419	212	46/34	93%
East Los Angeles (1)	39	11	26	0/2	100%
Brea (5-10)	41	25	15	0/1	100%
Yorba Linda (21-23)	63	42	12	7/2	86%
Costa Mesa (21-31)	459	224	201	25/9	92%
Irvine (21-37)	682	232	387	10/53	92%
Rancho Bernardo (1)	569	340	167	27/37	89%

## HLB Delimitation Treatments – FS and Adj. in LA County

Areas	Total Properties	Properties Treated	No Host Properties	Refusals/ No Contact
Commerce	14	8	0	3/3
La Puente	9	2	4	0/3
Montebello	13	3	8	2/0
Pico Rivera	135	85	43	3/5
South Gate	86	50	27	6/3
Whittier	32	9	17	4/1

# Southern District Staffing Updates

County	Permanent	Seasonal	Pending Hiring	Hiring Status
Los Angeles	23	4	One PPA II and One PPA I	Pending advertisement.
Orange	15	0	One PPA I	Pending advertisement.
Riverside and San Bernardino	16	6	One PPA I	Advertised, awaiting applications.
San Diego and Imperial	17	0		

# Staff Distribution By Activities

Counties	Delimitation and other Surveys	Treatments and Tree Removals	Regulatory
Los Angeles and Orange	24	15	3
Riverside and San Bernardino	10	8	4
San Diego and Imperial	9	4	3

# Budget Analysis- Southern District

- The contract with Imperial County to conduct the multi-pest survey in the 2-mile area along the US/MX border was executed.
  - This will allow the county to conduct the survey twice a year to determine the presence of HLB in the area.
- The Scope of Work (SOW) to retrofit six fleet vehicles into treatment trucks was completed.
  - All other documents were reviewed, finalized, and submitted to the Contracts office.
  - These trucks will be operated by CDFA staff to conduct treatments and will be significantly cost effective despite slight reduction in operational efficiency, but we will prioritize areas based on risk.
  - The current treatment agreements with the vendors will work as a safety net and for additional support, if needed.



**Central District Update  
Operations Subcommittee Meeting  
October 16, 2024**

# Central District Update

- Since July 10:
  - One adult ACP on two traps at Lindsay packing house in Tulare County confirmed on August 16 & 21.
    - Regulatory incident.
    - *Tamarixia* were released.
  - One adult ACP on packing house trap in Lemon Cove in Tulare County confirmed on September 6 & 12.
    - Four live ACP collected from nearby residential property tested negative.
    - Triggered 400-meter treatment area.
    - *Tamarixia* were released.
    - Treatment completed on September 27.



# Central District Update

- Detection, delimitation, and grove trapping remains status-quo.
- Multi-pest risk survey is on-going.
- Three county agreements will have funding reduced and one agreement defunded.
  - Agreements began October 1 – in process to amend according to the approved reductions.
- Treatment contracts will have funding reduced, except for Ventura County.
  - Will use treatment vendors only when necessary.
  - Ventura County treatment and tree removal costs billed to the E-fund through June 30, 2025.





Total Properties Surveyed	Total Survey Refusals	Total Properties Treated	Total Treatment Refusals	Total HLB+ Trees	Total HLB+ Trees Removed	Total Tree Removal Refusals
2,177	17	818	38	81	79	0



# Santa Paula, Ventura County

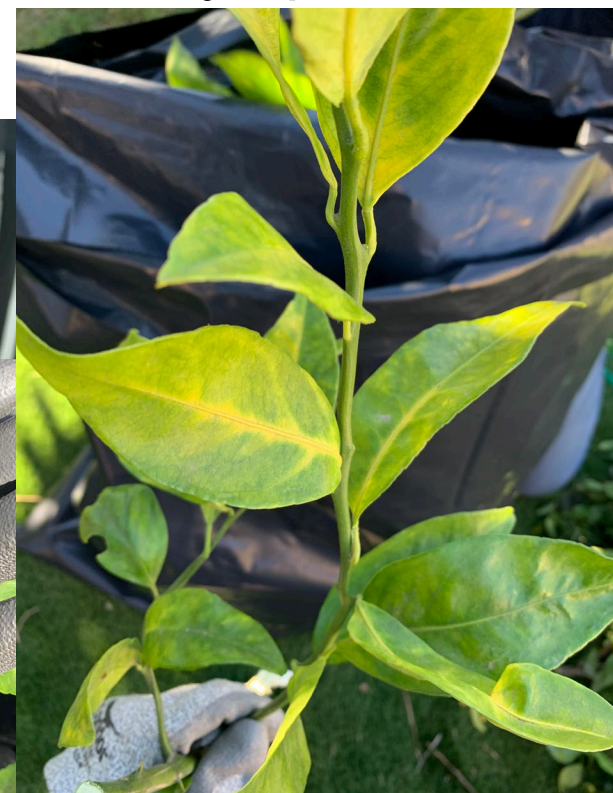


Before



After

HLB symptoms





## Central District Update - Projects

Office	Survey	Trapping	Treatment
Fresno	5	7	0
Visalia	5	4	0
Shafter	5	2	0
Camarillo	8	0	2



# Central District Update - Staffing

County	Total Perm Staff (current)	Pending Hiring (vacancies)	Hiring Status
Fresno County (Fresno)	12	N/A	1 PPA I So-Cal LT
Kern County (Shafter)	7	N/A	1 PPA I on loan to PD/EP; 1 PPA I vacancy
Tulare County (Visalia)	9	N/A	Fully Staffed
Tulare County (Visalia Regulatory)	1	N/A	Fully Staffed
Ventura County (Camarillo)	10	N/A	1 PPA I & PPA III on loan to PD/EP



Northern District Update  
Operations Subcommittee Meeting  
October 16, 2024

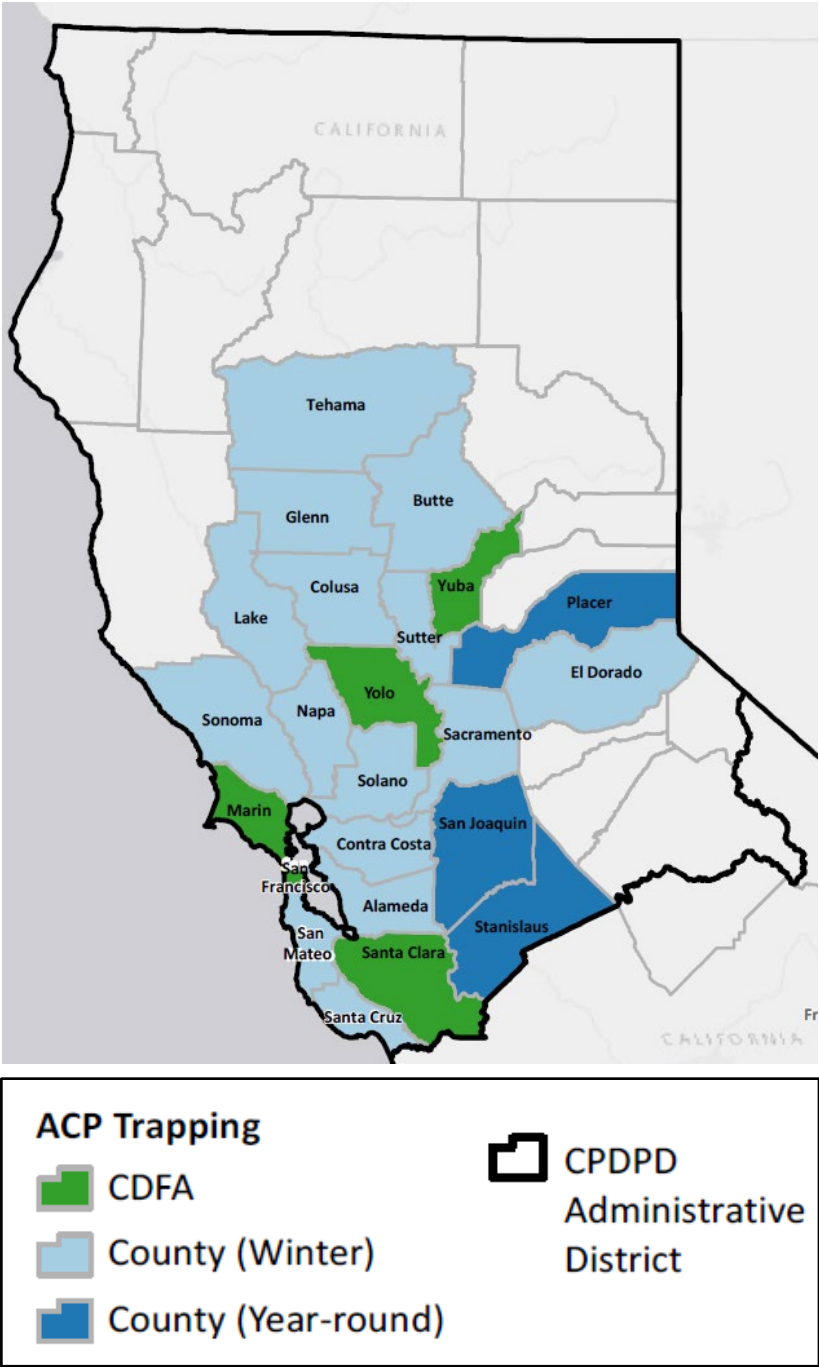
# Northern District Update | ACP Trapping



General Detection

Entity	Type	Number of Counties	Number of Traps
County	Commercial	3	135
County	Residential (YR)	3	1351
County	Residential (W)	15	5530
		12*	3090*
State (CDFA)	Residential (W)	5	1358

\*Based on winter trapping analysis, the number of traps were reduced or counties agreements were cancelled based on risk.



# Northern District Update | HLB Risk-Based Survey



2024 Cycle 2 Counties	
Alameda	San Joaquin
Butte	San Mateo
Contra Costa	Santa Clara
Glenn	Solano
Marin	Sonoma
Placer	Stanislaus
Sacramento	

Currently 85% of Cycle 1 is complete (as of 10/4/24)

Cycle 2 is anticipated to start mid-October



# Northern District Update | Staffing

Classification	Total Perm Staff (current)	Vacancies	Hiring Status
Senior Environmental Scientist (Supervisory)	3	0	
Senior Environmental Scientist (Specialist)	2	0	
Environmental Scientist	6	0	
Research Data Specialist I	1	0	
APC Supervisor	1	0	
APC Specialist	1	0	
Pest Prevention Assistant II	3	0	
Pest Prevention Assistant I	3	0	

# Northern District Update

## Santa Clara County Treatment

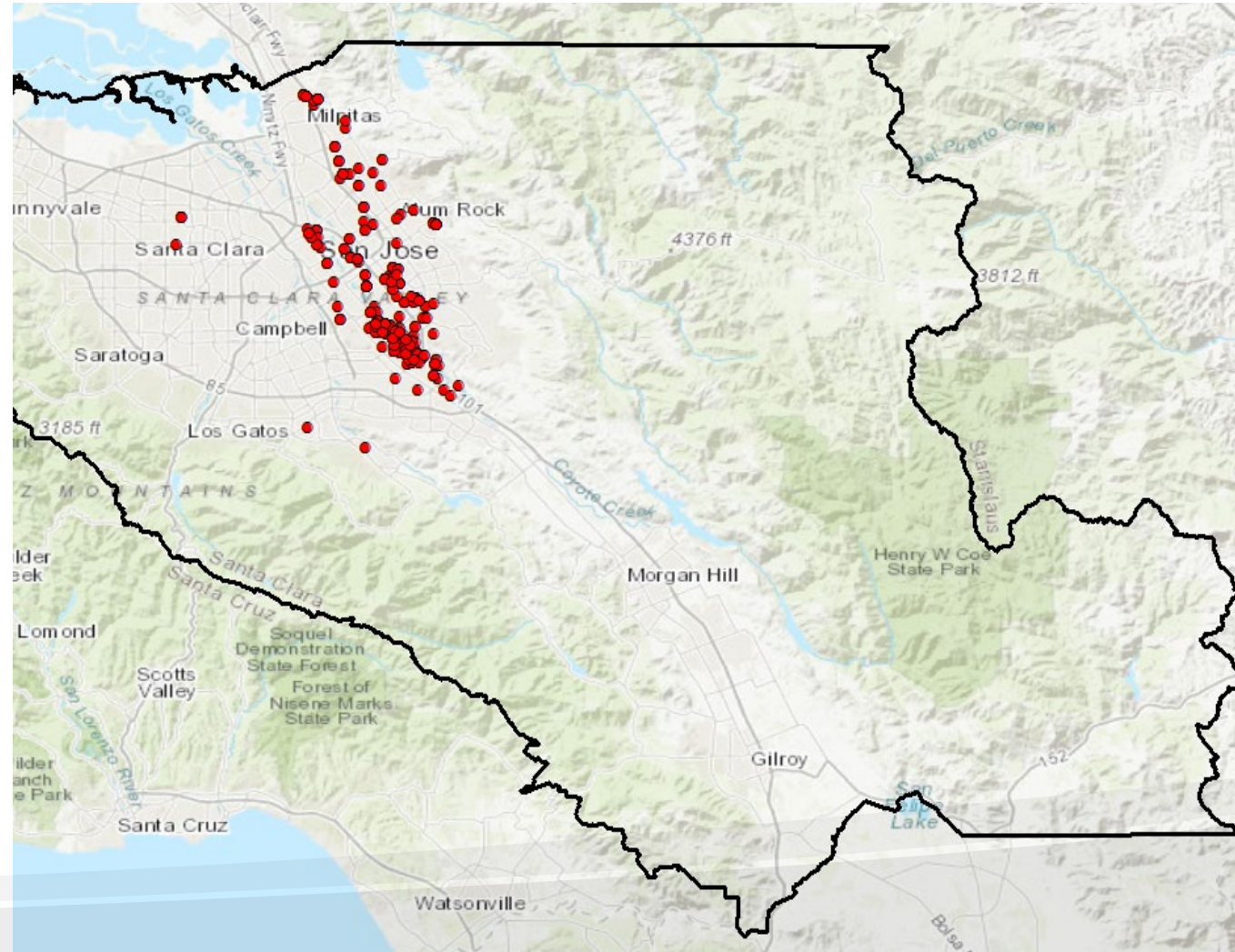
28 new detections since last Operations Subcommittee meeting on July 10, 2024, resulting in:

- 5-grid expansion (43 to 48)
- 232 more delimitation traps (720 to 952)

First round of foliar spot treatment (54 properties) completed June 2024

Second round of foliar AND systemic spot treatment in progress

New PEP added 18 additional properties



# Asian Citrus Psyllid Biocontrol Update



October  
2024



CITRUS PEST & DISEASE  
PREVENTION DIVISION  
CALIFORNIA DEPARTMENT OF FOOD AND AGRICULTURE

# Biological Control Agent Releases

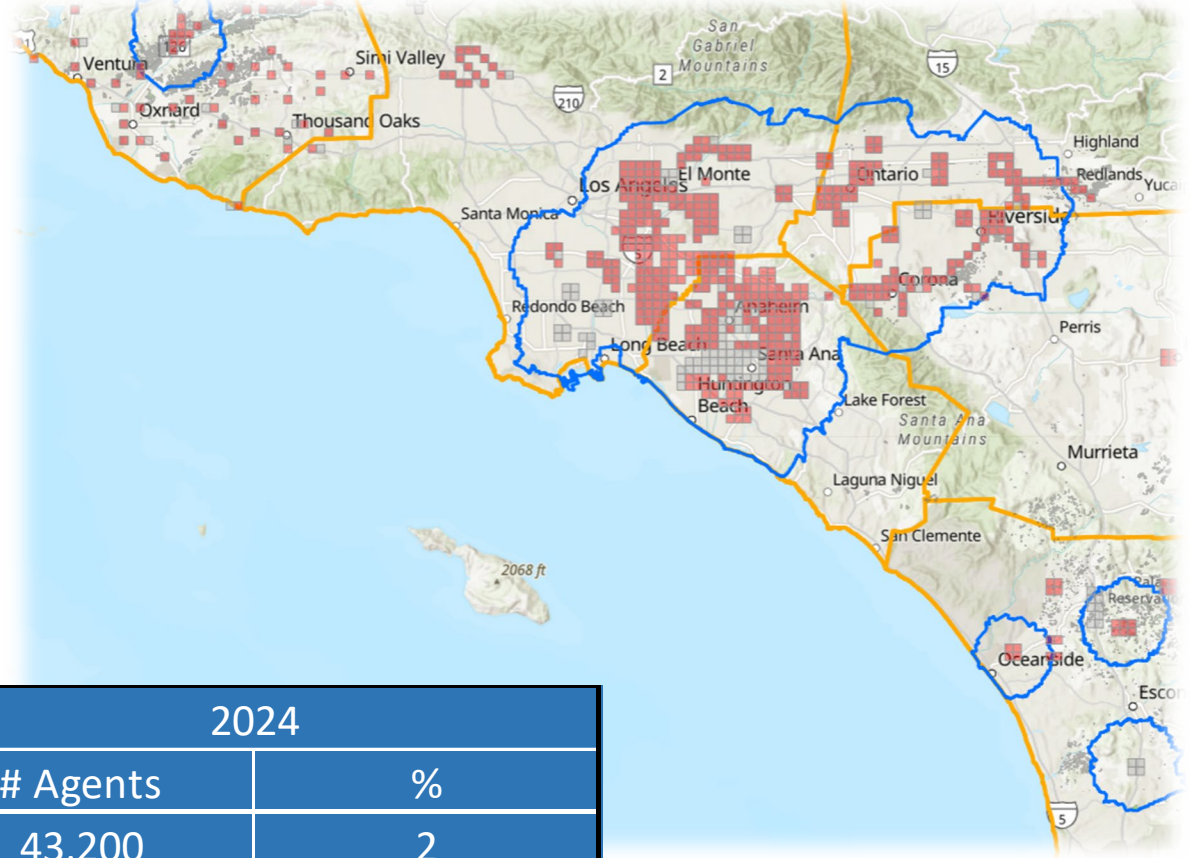
County	Releases Previous Month	Releases, 2024	Releases 2011-2024	
	September 2024	<i>T. radiata</i> Released	<i>T. radiata</i> Released	<i>D. aligarhensis</i> Released
Imperial	8,200	43,200	698,743	10,295
Los Angeles	49,400	595,700	8,626,224	107,734
Orange	39,400	485,400	6,796,716	71,179
Riverside	15,400	192,800	4,292,402	127,739
San Bernardino	18,900	186,800	2,447,515	57,252
San Diego	15,000	217,500	3,412,364	86,403
Ventura	15,300	171,200	2,590,906	16,830
Santa Barbara	6,000	38,600	444,782	12,012
Kern	0	3,200	407,664	0
Santa Clara	6,000	55,000	345,037	0
Placer	0	0	3,400	0
San Luis Obispo	3,000	3,000	142,200	0
Tulare	3,600	5,200	68,600	0
Fresno	0	8,000	35,000	0
Monterey	0	0	29,000	0
Madera	0	0	5,600	0
Arizona	0	0	253,500	0
Mexico	0	0	306,000	0
TOTAL	180,200	2,005,600	30,905,653	489,444
	TOTAL (2011-2024):			31,395,097



# Biological Control Agent Release Areas

## Releases in:

- HLB Quarantine areas
- Borders
- Trade routes
- Area-wide management
- Newly established ACP



Release Type	2023		2024	
	# Agents	%	# Agents	%
Borders	99,800	4	43,200	2
HLB	1,889,615	80	1,678,200	84
New	147,900	6	74,400	4
Routes	232,300	10	209,800	10



# Region-Wide Urban Monitoring 2015 - Present

