

## CONSENT AGENDA

### 1. Minutes approval from February 21, 2024 meeting

#### CALIFORNIA CITRUS PEST AND DISEASE PREVENTION COMMITTEE MEETING

Meeting Minutes  
Wednesday, February 21, 2024

##### **Committee Members Present:**

|                  |               |               |
|------------------|---------------|---------------|
| Craig Armstrong  | John C. Gless | Rod Radtke    |
| Franco Bernardi* | Jim Gorden    | Roger Smith   |
| Brad Carmen      | Mark McBroom  | Keith Watkins |
| Bob Felts Jr.    | Kurt Metheny  |               |

##### **Committee Members Absent:**

|              |               |              |
|--------------|---------------|--------------|
| Kevin Ball   | Jared Plumlee | Etienne Rabe |
| Aaron Dillon |               |              |

##### **California Department of Food and Agriculture (CDFA) Staff:**

|                     |                 |                |
|---------------------|-----------------|----------------|
| Carl Baum*          | Anmol Joshi*    | Raymond Niem*  |
| Ravneet Behla*      | Sarah Kraft*    | Keith Okasaki* |
| Fernando Berber     | Luci Kumagai*   | Phong, David*  |
| Kiana Dao*          | Zack McCormack* | Alisha Rios*   |
| Ariana De la Torre* | David Morgan*   | Rathkiry Siv*  |
| David Gutierrez     | Alex Muñiz*     | Nilan Watmore* |
| Victoria Hornbaker  | Deborah Nardo   | Jason Wu*      |

##### **Guests:**

|                   |                     |                   |
|-------------------|---------------------|-------------------|
| Price Adams*      | Ariana Gehrig*      | Cressida Silvers* |
| Alejandro Alaniz* | Subhas Hajeri*      | Makayla Thompson* |
| Korinne Bell*     | Jessica Leslie*     | Greta Varien      |
| Rob Clark*        | Peggy Mark*         | Helene Wright*    |
| Natalie DeAngelo* | Sarah Mellor*       | Qijun Xiang*      |
| Rick Dunn         | Ivan Milosavljevic* | Judy Zaninovich*  |
| Lisa Finke*       | Mia Neunzig*        | Sandra Zwaal*     |
| Dhiraj Gautam*    | Margaret O'Niell*   |                   |

*\*Attended the meeting virtually.*

##### **Opening Comments**

Mark McBroom called the Citrus Pest and Disease Prevention Committee (CPDPC) meeting to order at 9:01 a.m. Mark McBroom welcomed the committee, staff, and members of the public participating in person and online. There was a quorum for the meeting.

## **Public Comments**

Victoria Hornbaker requested that all presentations and read-ahead information that will be used at the full CPDPC meeting be submitted 15 days prior to each CPDPC meeting for posting with the agenda in accordance with requirements set by the Bagley-Keene Act.

## **APPROVAL OF CONSENT AGENDA ITEMS**

The consent agenda contained the following items:

1. Minutes from the November 8, 2023 Committee meeting.

**Motion:** To approve the consent agenda with the following correction, add Marcy Martin, Casey Creamer, and Ivan Milosavljevic as in attendance.

**First:** Keith Watkins

**Second:** Rod Radtke

**Motion Carries:** The motion passed unanimously.

## **FINANCE SUBCOMMITTEE REPORT**

### **Close 2022/23 Budget Expenditures and Revenue**

Bob Felts Jr. reported that there were no additional expenditures for the 2022-23 fiscal year (FY) with the year closing in Fi\$Cal at \$36,239,404 and \$8,210,350 remaining in the budget. The total expenditures for prior FY 2021-2022 closed at \$36,071,668. Bob reported that FY 2022-2023 revenue closed at \$13,022,888 at a \$0.07 per carton rate for approximately 186,000,000 cartons compared to the projected 188,000,000 cartons. The total revenue at \$0.07 for the prior FY 2021-2022 closed at \$11,000,939.

### **Review 2023/2024 Expenditures and Revenue**

Bob reported that expenditures in October 2023 were \$2,668,800, expenditures in November were \$2,980,646, and expenditures in December were \$2,980,646, bringing the year-to-date expenditures to a total of \$14,296,149. The total expenditures for the same time frame during prior FY 2022-2023 was a total of \$17,668,105. Budget cuts and reallocations have helped to reduce expenditures by approximately \$3,000,000 for FY 2023-2024. Bob reported that that FY 2023-2024 revenue received through January 2024 was \$3,656,564 for approximately 40,600,000 cartons at a \$0.09 per carton rate. Additionally, the clean citrus nursery stock program has a balance of \$255,000 and is a fee for service program.

### **FY 2023-2024 Proposed Budget Revision**

Bob presented a proposed revision to the FY 2023-2024 budget due to recent huanlongbing (HLB) detections in Ventura County and a Citrus Yellow Vein Clearing Virus (CYVCV) detection in Los Angeles County. The United States Department of Agriculture (USDA) granted the Citrus Pest and Disease Prevention Division (CPDPD) an additional \$250,000 for CYVCV operations along with an approved increase in CDFA emergency funding of \$1,627,235 for Ventura HLB response activities.

**Motion:** To revise the Committee Budget to add \$1,627,235 for HLB response in Ventura and \$250,000 for CYVCV in Los Angeles.

**First:** Bob Felts Jr.

**Second:** Jim Gorden

**Motion Carries:** The motion passed unanimously.

### **Assessment Rate Discussion**

Bob recommended leaving the assessment rate at \$0.09 per carton. Committee members agreed to keep the assessment rate at \$0.09 per carton for the remainder of FY 2023-2024 and will consider assessment rate changes at a future meeting while aggressively disencumbering unspent encumbrances when possible.

## **OPERATIONS SUBCOMMITTEE REPORT**

### **Laboratory Update**

Lucita Kumagai presented the laboratory update for the huanglongbing testing program from the Plant Pest Diagnostics Center. She reported that as of December 2023, the lab received an average of 6,500 plant samples per month and received an average of 900 Asian citrus psyllid (ACP) samples per month for a combined total of 88,108 total samples received in 2023. In January 2024, the lab received 5,038 plant samples and 180 ACP samples. As of February 16, 2024, there were 4,863 total reported HLB positive sites, 7,413 total detected HLB positive trees, and 790 total detected *Candidatus Liberibacter asiaticus* positive ACP samples. Sixty seven percent of all HLB positive trees have been detected in Orange County.

### **HLB Risk-based Survey**

David Phong presented data for 2023 Risk Survey Cycle 2. Cycle 2 2023 began in August 2023 and is 46 percent complete with 9 of the 34 allocated counties completed. 5,747 properties were visited, and 1,649 properties sampled generating 679 entomology and 1,185 plant samples.

### **CDFA Operational Update**

David Gutierrez presented the operational update including ACP and HLB delimitation survey and treatment areas for the Southern, Central, and Northern Districts.

### **Southern District**

To date in 2024, a total of 212 HLB positive trees have been detected in Southern California with the majority of detections found in Orange County. Additionally, 16 trees were detected in Valley Center, San Diego County, with 15 found on a residential parcel consisting of 25+ host trees. The resident completed treatment of all host plants on their property and all HLB positive trees were removed and disposed of. Delimitation survey and treatment of the original 250-meter detection area was completed with 205 plant samples still pending results. Five public meetings were held to conduct delimitation survey in different areas of Los Angeles, Orange, Riverside, San Bernardino, and San Diego Counties. A total of 832 trees were removed during the months of November

2023 through January 2024 with 375 cumulative trees still pending removal in these counties.

### **Central District**

On January 31, 2024, one ACP detection was confirmed on a residential property in Kern County. Treatment for this area was completed on February 13, 2024. *Tamarixia radiata* releases were conducted in Kern, Ventura, and Santa Barbara Counties near the recent detections and the Santa Paula HLB delimitation boundary. Multi-pest survey and citrus commodity survey are ongoing in these areas. On February 9, 2024, two HLB positive trees were detected in Santa Paula, Ventura County resulting in a small expansion of the delimitation boundary. A public meeting was held on February 6, 2024, with treatment of 59 properties and tree removals scheduled after the meeting, weather permitting. Following execution of a tree removal contract, 58 HLB positive trees were removed with 12 trees pending removal. Outreach letters were sent to 32 treatment refusal properties. CDFA received no responses from those properties and staff will proceed with abatement process.

### **Northern District**

There have been no new ACP detections in San Joaquin and Sonoma Counties. As a result of no new detections, 43 delimitation traps in San Joaquin County and 55 delimitation traps in Sonoma County have been converted to winter traps. Since October 11, 2023, there were 31 new ACP detections in Santa Clara County, triggering two delimitation area expansions in Los Arboles with an additional 7 new grids. There have been no new treatments since 2022. *Tamarixia* releases are ongoing in San Jose, Santa Clara County, with an average of 6,000 insects released per month.

### **CDFA Regulatory and County Agreement Update**

Keith Okasaki presented the regulatory county monthly activity report for October 2023 through December 2023. Under the new agreements that began in October 2023, counties have been reaching out to farm labor contractors regarding inspections. Regulatory staff have visited markets, swap meets, and flea markets to follow up with fruit vendors, especially around the Lunar New Year celebration when more citrus is sold. Home nurseries continue to pop up in HLB quarantine areas. Clean citrus nursery stock sampling has concluded for the year with results pending for one remaining sample.

### **Revising ACP Quarantine Movement**

Keith presented a proposal to amend or remove mitigations for moving citrus into HLB quarantine zones.

**Motion:** To remove the requirement for a mitigation to move fruit from an ACP quarantine to an HLB quarantine for packing or processing. Safeguarding the load is still required.

**First:** John C. Gless

**Second:** Kurt Metheny



**Motion Carries:** The motion passed unanimously.

### **Biocontrol Update**

Victoria Hornbaker presented the ACP biocontrol update for January 2024. As of 2022, *Tamarixia* has been produced by only CDFA and Citrus Research Board (CRB). Staff released 2,369,615 total insects in 2023 with 188,700 insects released in January 2024. Most releases occurred in HLB detection areas, along the United States/Mexico border, on citrus movement corridors, and in new ACP detection areas, like Santa Clara County.

### **Winter Trapping Analysis**

David Phong presented a recommendation to optimize CDFA's winter ACP trapping in Marin, San Francisco, Santa Clara, Yolo, and Yuba Counties by reducing trapping in low-risk grids and adopting a rotating year trapping strategy in those low-risk grids thus reducing winter trapping efforts by up to thirty percent.

**Motion:** To recommend implementing the revised winter trapping plan (by adopting a rotating year trapping strategy in low-risk grids) and to conduct additional analysis to determine if trapping can be further reduced during winter months.

**First:** Keith Watkins

**Second:** Bob Felts Jr.

**Motion Carries:** The motion passed unanimously.

### **Santa Clara Hotspot Analysis**

Dr. Ravneet Behla presented on the increase detections of ACP in Santa Clara County. ACP was first detected in Santa Clara County in 2014. In December 2022, the CPDPC approved treatment on specific nymphal sites and adjacent properties. As of December 18, 2023, there have been 609 confirmed ACP Pest Detection Reports and two active delimitation areas. Based on the location and frequency of detections, CPDPD conducted a hotspot analysis of the delimitation grids with a high frequency of ACP detections, coordinating with Santa Clara County agricultural staff to conduct visual survey with tap method, interviewing residents, and conducting regular web searches for unregulated points of sale of citrus plants. Ravneet suggested spot treatments at the find sites to suppress the ACP population.

**Motion:** To conduct recommended spending \$7,041 to conduct spot treatment for Asian citrus psyllid in Santa Clara County.

**First:** Craig Armstrong

**Second:** Jim Gorden

**Motion Carries:** The motion passed unanimously.

## **SCIENCE SUBCOMMITTEE REPORT**

### **Ethyl Formate Registration**

Keith Watkins reported that Jim Cranney is aiming for registration of ethyl formate to be completed by April 2024.

### **Risk Based Survey Working Group Recommendation**

Keith Watkins reported that the CPDPD is working to implement the recommendations proposed by the Risk-Based Survey Working Group. The working group proposed focusing residential survey efforts within 1,500 meters of commercial citrus greater than 5 acres, which allows staff to survey all grids within this proposed area approximately every 2 years. Additionally, the group discussed Dr. Jim Adaskaveg's report that he has not been able to replicate CDFA's sweet orange scab. More follow up will ensue at future meetings. Robert Clark reported on his analysis on the location of tree removals after a positive identification and what the CT values were when they occurred. His analysis implies that "hot" areas will continue to get "hotter."

### **OUTREACH SUBCOMMITTEE REPORT**

Natalie DeAngelo introduced Makayla Thompson as the new account executive of the Nuffer, Smith, Tucker (NST) team. In response to the recent HLB detections in Valley Center, San Diego County, NST implemented the crisis communications plan. A notification on quarantine expansion was posted to Citrus Insider. NST also conducted media outreach and interviews on new HLB positive detections, including what it means for homeowners and the current state of ACP and HLB in California. These included over 37 stories placed within the San Diego market, a three-part interview with ABC 10 news, and an interview with the Valley Roadrunner. In-language ads were placed in Vietnamese and Chinese publications throughout the state, encouraging residents to celebrate the Lunar New Year with safe citrus practices. NST also partnered with online gardening influencers for content series sharing information about the Citrus Clonal Protection Program and the importance of using disease-free budwood when propagating citrus plants. NST staff also coordinated with Keith Okasaki on the development of a letter to distribute to nurseries as CDFA staff conduct inspections. The Citrus Hero Award was presented to the California Agricultural Commissioners and Sealers Association (CACASA) recognizing their partnership with CPDPD. Upcoming outreach activities include the Highland Citrus Harvest Festival, California Citrus Mutual (CCM) Citrus Showcase, food bank donations blog and infographic for elected officials, Ag Day at the Capitol, National Gardening Month outreach to Spanish publications, and California Rare Fruit Growers Associations outreach.

### **EXECUTIVE COMMITTEE REPORT**

#### **Fruit Fly Update**

Victoria Hornbaker provided an update on fruit fly quarantines. Currently there are Oriental fruit fly (OFF) quarantines in Santa Clara County, Contra Costa County, Sacramento County, and San Bernardino/Riverside County. There is also a Mediterranean fruit fly quarantine in Los Angeles County, a *Zeugodacus tau* fruit fly quarantine in Los Angeles County, and a Queensland fruit fly quarantine in Ventura County. Regarding citrus, there are citrus growers within the OFF quarantines in San

Bernardino/Riverside Counties and the Queensland fruit fly quarantine in Ventura County. CPDPD staff continue to assist with fruit fly response activities. Contracts with Cooperative Agricultural Support Services (CASS) have been amended to include 155 CASS positions, including 24 inspectors and 131 trappers, to assist with fruit fly mitigation. Victoria has been working on outreach materials and obtained an emergency contract with NST to assist in outreach. Keith Okasaki is also working with growers to expeditiously remove fruit from the mandatory fruit removal areas.

### **Officer Elections**

Victoria asked the CPDPC for nominations for the positions of Chairman, Vice Chairman, and Secretary Treasurer.

**Motion:** To recommend electing Keith Watkins as the Chairman of the Citrus Pest and Disease Prevention Committee.

**First:** Mark McBroom

**Second:** Craig Armstrong

**Motion Carries:** The motion passed with 9 yays (Craig Armstrong, Brad Carmen, Bob Felts Jr., John C. Gless, Jim Gorden, Mark McBroom, Kurt Metheny, Rod Radtke and Roger Smith), and 1 abstention (Keith Watkins).

**Motion:** To recommend electing John C. Gless as the Vice Chairman of the Citrus Pest and Disease Prevention Committee.

**First:** Jim Gorden

**Second:** Craig Armstrong

**Motion Carries:** The motion passed with 9 yays (Craig Armstrong, Brad Carmen, Bob Felts Jr., Jim Gorden, Mark McBroom, Kurt Metheny, Rod Radtke, Roger Smith, and Keith Watkins) and 1 abstention (John C. Gless).

**Motion:** To recommend electing Mark McBroom as the Secretary Treasurer of the Citrus Pest and Disease Prevention Committee.

**First:** Mark McBroom

**Second:** John C. Gless

**Motion Carries:** The motion passed with 9 yays (Craig Armstrong, Brad Carmen, Bob Felts Jr., John C. Gless, Jim Gorden, Kurt Metheny, Rod Radtke, Roger Smith, and Keith Watkins) and 1 abstention (Mark McBroom).

### **USDA Report**

Helene Wright reported that USDA continues to process cooperative agreements, including the Citrus Health Response Program funding, funding for CYVCV and for ACP/HLB outreach through the Plant Protection Act 7721 (formerly known as The Farm Bill). She also stated that a new post-harvest treatment for OFF is currently being developed.

### **Citrus Research Board (CRB) Report**

Mark McBroom reported that CRB will host a webinar at 2:00 p.m. on March 7, 2024 for a second cycle of applications for the citrus research and field trials program. He also stated that CRB will continue to support statewide CPDP activities on the citrus layer. Mark also recognized Rick Dunn for all his hard work over the years supporting the citrus program, as he is retiring from CRB in March 2024.

### **San Joaquin Valley Citrus Pest Control Districts (SJV PCD) Report**

Dr. Subhas Hajeri reported that from mid-September 2023 to Mid-December 2023 a total of 8,089 traps were placed in 2,400 trapping locations in the Central Valley. No ACP were found on the traps, but glassy winged sharpshooters were found on some of the traps. From mid-April to mid-June 2024, a total of 19,164 traps are projected for placement in 3,194 trapping locations. Significant improvements have been made to mapping.

### **OTHER ITEMS, CLOSING COMMENTS AND ADJOURNMENT**

#### **Program Environmental Impact Report (PEIR) Update**

Victoria reported that the Plant Division, Peirce's Disease Control Board and the CPDPD are meeting weekly with the PEIR contractor and making progress. The California Department of Pesticide Regulation (DPR), and the Office of Environmental Health Hazard Assessment (OEHHA) will be reviewing human health risk assessments. The California Department of Fish and Wildlife will be assisting with the environmental risk assessment.

#### **Sweet Orange Scab (SOS) Action Plan**

Victoria presented the SOS Action Plan. The SOS Action Plan will be reviewed at least quarterly so that amendments may be added to the document.

**Motion:** To recommend approving the SOS action plan.

**First:** Rod Radtke

**Second:** Craig Armstrong

**Motion Carries:** The motion passed unanimously.

#### **CYVCV Quarantine Regulation**

Keith Okasaki presented an outline of the CYVCV regulatory response for a CYVCV detection. The response would not require removal of infected trees and would include a quarantine of a half-mile radius from positive a detection.


**Motion:** To recommend moving forward with the CYVCV regulatory response rulemaking package and to have the rulemaking package reviewed by the executive committee for amendments and/or additions.

**First:** Craig Armstrong

**Second:** Jim Gorden

**Motion Carries:** The motion passed unanimously.


The meeting was adjourned at 12:30 p.m. The next meeting will be on May 8, 2024 in Visalia, California.



CPDPC  
April 2024  
Results

**CPDPC Finance Subcommittee**

*May 1, 2024*



**FY 23-24  
Expenditures**

# FY 23-24 December 2023 Expenditures

| #  | Group    | Region    | Activity      | Committee Approved 2023-24 Budget | Remaining 2023-24 Budget | December 2023 Expenditures per FI\$Cal | Year to Date Expenditures per FI\$Cal | Prior year FY22-23 Year to date Expenditures | December 2023 Encumbrance Changes | Year to Date Encumbrances |
|----|----------|-----------|---------------|-----------------------------------|--------------------------|--|---------------------------------------|--|-----------------------------------|---------------------------|
| 1  | ACP Mgmt | Central   | Survey        | \$ 3,688,353                      | \$ 2,567,753             | \$ 157,198                             | \$ 1,120,600                          | \$ 1,038,767                                 | \$ 119,056                        | \$ 300,029                |
| 2  | ACP Mgmt | Central   | Treatment     | \$ 1,881,438                      | \$ 1,788,302             | \$ 1,394                               | \$ 93,136                             | \$ 535,766                                   | \$ (119)                          | \$ 5,000                  |
| 3  | ACP Mgmt | Northern  | Survey        | \$ 1,759,845                      | \$ 901,656               | \$ 180,997                             | \$ 858,189                            | \$ 494,950                                   | \$ 429,295                        | \$ 495,437                |
| 4  | ACP Mgmt | Northern  | Treatment     | \$ 53,107                         | \$ 49,663                | \$ -                                   | \$ 3,444                              | \$ 12,674                                    | \$ -                              | \$ 381,044                |
| 5  | ACP Mgmt | Statewide | Biocontrol    | \$ 1,720,409                      | \$ 993,807               | \$ 149,799                             | \$ 726,602                            | \$ 586,394                                   | \$ (2,822)                        | \$ 1,028,639              |
| 6  | ACP Mgmt | Statewide | Survey        | \$ 1,000,000                      | \$ 210,451               | \$ 158,160                             | \$ 789,549                            | \$ 834,982                                   | \$ -                              | \$ 3,157,360              |
| 7  | ACP Mgmt | Statewide | Regulatory    | \$ 3,257,844                      | \$ 2,552,811             | \$ 179,416                             | \$ 705,033                            | \$ 775,002                                   | \$ 776,440                        | \$ 998,774                |
| 8  | HLB Det  | Southern  | Survey        | \$ 2,199,453                      | \$ 771,499               | \$ 210,880                             | \$ 1,427,954                          | \$ 882,551                                   | \$ (9,089)                        | \$ 5,368                  |
| 9  | HLB Det  | Statewide | Survey        | \$ 5,887,471                      | \$ 3,982,903             | \$ 214,687                             | \$ 1,904,569                          | \$ 2,567,244                                 | \$ (7,921)                        | \$ 7,366                  |
| 10 | HLB Det  | Statewide | Diagnostics   | \$ 3,556,269                      | \$ 2,666,176             | \$ 165,086                             | \$ 890,093                            | \$ 1,262,741                                 | \$ (27,551)                       | \$ 1,053,287              |
| 11 | HLB Erad | Southern  | Treatment     | \$ 6,179,634                      | \$ 3,271,153             | \$ 488,090                             | \$ 2,908,481                          | \$ 3,284,195                                 | \$ 684,409                        | \$ 6,856,231              |
| 12 | HLB Erad | Statewide | Regulatory    | \$ 770,273                        | \$ 483,952               | \$ 60,381                              | \$ 286,322                            | \$ 298,776                                   | \$ -                              | \$ 16,325                 |
| 13 | ACP/HLB  | Statewide | Admin*        | \$ 2,073,024                      | \$ 1,323,076             | \$ 164,453                             | \$ 749,948                            | \$ 3,520,892                                 | \$ -                              | \$ 7,458                  |
| 14 | ACP/HLB  | Statewide | Outreach      | \$ 1,552,478                      | \$ 1,319,640             | \$ (169,914)                           | \$ 232,838                            | \$ 754,684                                   | \$ 630,696                        | \$ 3,326,915              |
| 15 | ACP/HLB  | Statewide | Data Analysis | \$ 1,245,934                      | \$ 810,480               | \$ 69,145                              | \$ 435,454                            | \$ 744,675                                   | \$ (3,041)                        | \$ 203,760                |
| 16 | ACP Mgmt | Statewide | Diagnostics   | \$ 209,462                        | \$ 171,977               | \$ 17,415                              | \$ 37,485                             | \$ 73,811                                    | \$ -                              | \$ -                      |
| 17 | Indirect | Statewide | Indirect      | \$ 4,465,004                      | \$ 1,577,648             | \$ 644,459                             | \$ 2,887,356                          | \$ -   | \$ 17,004                         | \$ 108,877                |
|    |          |           |               |                                   |                          |  |                                       |  |                                   |                           |
|    |          |           | <b>Totals</b> | <b>\$41,500,000</b>               | <b>\$25,442,947</b>      | <b>\$2,691,645</b>                     | <b>\$16,057,054</b>                   | <b>\$17,668,105</b>                          | <b>\$2,606,357</b>                | <b>\$17,951,870</b>       |

\*\$55,693 will be reallocated to other budgets line items in the future.



# FY 23-24 January 2024 Expenditures

| #  | Group    | Region    | Activity      | Committee Approved 2023-24 Budget | Remaining 2023-24 Budget | January 2024 Expenditures per FI\$Cal | Year to Date Expenditures per FI\$Cal | Prior year FY22-23 Year to date Expenditures | January 2024 Encumbrance Changes | Year to Date Encumbrances |
|----|----------|-----------|---------------|-----------------------------------|--------------------------|---------------------------------------|---------------------------------------|--|----------------------------------|---------------------------|
| 1  | ACP Mgmt | Central   | Survey        | \$ 3,688,353                      | \$ 2,343,511             | \$ 224,242                            | \$ 1,344,842                          | \$ 1,183,745                                 | \$ 813,198                       | \$ 1,113,226              |
| 2  | ACP Mgmt | Central   | Treatment     | \$ 1,881,438                      | \$ 1,777,779             | \$ 10,523                             | \$ 103,659                            | \$ 648,644                                   | \$ 1,150,000                     | \$ 1,155,000              |
| 3  | ACP Mgmt | Northern  | Survey        | \$ 1,759,845                      | \$ 714,868               | \$ 186,788                            | \$ 1,044,977                          | \$ 655,113                                   | \$ 456,220                       | \$ 951,658                |
| 4  | ACP Mgmt | Northern  | Treatment     | \$ 53,107                         | \$ 48,304                | \$ 1,359                              | \$ 4,803                              | \$ 13,800                                    | \$ -                             | \$ 381,044                |
| 5  | ACP Mgmt | Statewide | Biocontrol    | \$ 1,720,409                      | \$ 840,525               | \$ 153,282                            | \$ 879,884                            | \$ 773,840                                   | \$ (171,902)                     | \$ 856,737                |
| 6  | ACP Mgmt | Statewide | Survey        | \$ 1,000,000                      | \$ 169,319               | \$ 41,132                             | \$ 830,681                            | \$ 1,129,625                                 | \$ (73,814)                      | \$ 3,083,547              |
| 7  | ACP Mgmt | Statewide | Regulatory    | \$ 3,257,844                      | \$ 2,279,447             | \$ 273,364                            | \$ 978,398                            | \$ 959,114                                   | \$ 1,524,559                     | \$ 2,523,333              |
| 8  | HLB Det  | Southern  | Survey        | \$ 2,199,453                      | \$ 547,124               | \$ 224,375                            | \$ 1,652,328                          | \$ 1,010,855                                 | \$ 127                           | \$ 5,496                  |
| 9  | HLB Det  | Statewide | Survey        | \$ 5,887,471                      | \$ 3,627,976             | \$ 354,927                            | \$ 2,259,496                          | \$ 2,876,632                                 | \$ (908)                         | \$ 6,458                  |
| 10 | HLB Det  | Statewide | Diagnostics   | \$ 3,556,269                      | \$ 2,485,817             | \$ 180,359                            | \$ 1,070,452                          | \$ 1,507,945                                 | \$ (359)                         | \$ 1,052,928              |
| 11 | HLB Erad | Southern  | Treatment     | \$ 6,179,634                      | \$ 2,641,272             | \$ 629,880                            | \$ 3,538,362                          | \$ 3,898,012                                 | \$ 28,395                        | \$ 6,884,626              |
| 12 | HLB Erad | Statewide | Regulatory    | \$ 770,273                        | \$ 413,820               | \$ 70,132                             | \$ 356,454                            | \$ 373,964                                   | \$ -                             | \$ 16,325                 |
| 13 | ACP/HLB  | Statewide | Admin*        | \$ 2,073,024                      | \$ 1,139,571             | \$ 183,505                            | \$ 933,453                            | \$ 4,105,826                                 | \$ 239                           | \$ 7,697                  |
| 14 | ACP/HLB  | Statewide | Outreach      | \$ 1,552,478                      | \$ 1,274,957             | \$ 44,683                             | \$ 277,521                            | \$ 783,762                                   | \$ (43,709)                      | \$ 3,283,206              |
| 15 | ACP/HLB  | Statewide | Data Analysis | \$ 1,245,934                      | \$ 745,354               | \$ 65,126                             | \$ 500,580                            | \$ 813,677                                   | \$ -                             | \$ 203,760                |
| 16 | ACP Mgmt | Statewide | Diagnostics   | \$ 209,462                        | \$ 157,942               | \$ 14,035                             | \$ 51,520                             | \$ 89,159                                    | \$ -                             | \$ -                      |
| 17 | Indirect | Statewide | Indirect      | \$ 4,465,004                      | \$ 1,720,048             | \$ (142,400)                          | \$ 2,744,956                          | \$ -   | \$ (6,665)                       | \$ 102,212                |
|    |          |           |               |                                   |                          |                                       |                                       |  |                                  |                           |
|    |          |           | <b>Totals</b> | <b>\$41,500,000</b>               | <b>\$22,927,634</b>      | <b>\$2,515,312</b>                    | <b>\$18,572,366</b>                   | <b>\$20,823,712</b>                          | <b>\$3,675,382</b>               | <b>\$21,627,252</b>       |

\*\$55,693 will be reallocated to other budgets line items in the future.

# FY 23-24 February 2024 Expenditures

| #  | Group    | Region    | Activity      | Committee Approved 2023-24 Budget | Remaining 2023-24 Budget | February 2024 Expenditures per FI\$Cal | Year to Date Expenditures per FI\$Cal | Prior year FY22-23 Year to date Expenditures | February 2024 Encumbrance Changes | Year to Date Encumbrances |
|----|----------|-----------|---------------|-----------------------------------|--------------------------|--|---------------------------------------|--|-----------------------------------|---------------------------|
| 1  | ACP Mgmt | Central   | Survey        | \$ 3,688,353                      | \$ 2,155,610             | \$ 187,901                             | \$ 1,532,743                          | \$ 1,431,538                                 | \$ (110,889)                      | \$ 1,002,337              |
| 2  | ACP Mgmt | Central   | Treatment     | \$ 1,881,438                      | \$ 1,763,228             | \$ 14,551                              | \$ 118,210                            | \$ 865,439                                   | \$ 250,000                        | \$ 1,405,000              |
| 3  | ACP Mgmt | Northern  | Survey        | \$ 1,759,845                      | \$ 542,875               | \$ 171,993                             | \$ 1,216,970                          | \$ 797,561                                   | \$ (130,274)                      | \$ 821,384                |
| 4  | ACP Mgmt | Northern  | Treatment     | \$ 53,107                         | \$ 47,503                | \$ 801                                 | \$ 5,604                              | \$ 21,380                                    | \$ -                              | \$ 381,044                |
| 5  | ACP Mgmt | Statewide | Biocontrol    | \$ 1,720,409                      | \$ 685,165               | \$ 155,360                             | \$ 1,035,244                          | \$ 864,566                                   | \$ (41,143)                       | \$ 815,594                |
| 6  | ACP Mgmt | Statewide | Survey        | \$ 1,000,000                      | \$ 103,891               | \$ 65,428                              | \$ 896,109                            | \$ 1,249,068                                 | \$ (65,418)                       | \$ 3,018,129              |
| 7  | ACP Mgmt | Statewide | Regulatory    | \$ 3,257,844                      | \$ 1,779,102             | \$ 500,345                             | \$ 1,478,742                          | \$ 1,216,793                                 | \$ (176,321)                      | \$ 2,347,012              |
| 8  | HLB Det  | Southern  | Survey        | \$ 2,199,453                      | \$ 306,365               | \$ 240,760                             | \$ 1,893,088                          | \$ 1,194,301                                 | \$ (539)                          | \$ 4,957                  |
| 9  | HLB Det  | Statewide | Survey        | \$ 5,887,471                      | \$ 3,240,312             | \$ 387,664                             | \$ 2,647,159                          | \$ 3,205,566                                 | \$ (496)                          | \$ 5,961                  |
| 10 | HLB Det  | Statewide | Diagnostics   | \$ 3,556,269                      | \$ 2,334,984             | \$ 150,833                             | \$ 1,221,285                          | \$ 1,679,115                                 | \$ (53,726)                       | \$ 999,202                |
| 11 | HLB Erad | Southern  | Treatment     | \$ 6,179,634                      | \$ 2,139,896             | \$ 501,376                             | \$ 4,039,737                          | \$ 4,502,575                                 | \$ (316,334)                      | \$ 6,568,292              |
| 12 | HLB Erad | Statewide | Regulatory    | \$ 770,273                        | \$ 339,315               | \$ 74,504                              | \$ 430,958                            | \$ 448,848                                   | \$ (16,325)                       | \$ 0                      |
| 13 | ACP/HLB  | Statewide | Admin*        | \$ 2,073,024                      | \$ 977,242               | \$ 162,329                             | \$ 1,095,782                          | \$ 4,519,090                                 | \$ (935)                          | \$ 6,762                  |
| 14 | ACP/HLB  | Statewide | Outreach      | \$ 1,552,478                      | \$ 1,018,894             | \$ 256,064                             | \$ 533,585                            | \$ 864,047                                   | \$ (453,459)                      | \$ 2,829,747              |
| 15 | ACP/HLB  | Statewide | Data Analysis | \$ 1,245,934                      | \$ 680,732               | \$ 64,622                              | \$ 565,203                            | \$ 911,727                                   | \$ -                              | \$ 203,760                |
| 16 | ACP Mgmt | Statewide | Diagnostics   | \$ 209,462                        | \$ 151,306               | \$ 6,636                               | \$ 58,157                             | \$ 106,454                                   | \$ -                              | \$ -                      |
| 17 | Indirect | Statewide | Indirect      | \$ 4,465,004                      | \$ 1,123,731             | \$ 596,316                             | \$ 3,341,273                          | \$ -   | \$ (411)                          | \$ 101,800                |
|    |          |           | <b>Totals</b> | <b>\$41,500,000</b>               | <b>\$19,390,152</b>      | <b>\$3,537,483</b>                     | <b>\$22,109,849</b>                   | <b>\$23,878,067</b>                          | <b>\$(1,116,270)</b>              | <b>\$20,510,982</b>       |

\*\$55,693 will be reallocated to other budgets line items in the future.

# FY 23-24 March 2024 Expenditures

| #  | Group    | Region    | Activity      | Committee Approved 2023-24 Budget | Remaining 2023-24 Budget | March 2024 Expenditures per FI\$Cal | Year to Date Expenditures per FI\$Cal | Prior year FY22-23 Year to date Expenditures | March 2024 Encumbrance Changes | Year to Date Encumbrances |
|----|----------|-----------|---------------|-----------------------------------|--------------------------|-------------------------------------|---------------------------------------|--|--------------------------------|---------------------------|
| 1  | ACP Mgmt | Central   | Survey        | \$ 3,688,353                      | \$ 1,667,660             | \$ 487,733                          | \$ 2,020,693                          | \$ 2,003,744                                 | \$ (338,197)                   | \$ 664,140                |
| 2  | ACP Mgmt | Central   | Treatment     | \$ 1,881,438                      | \$ 1,753,456             | \$ 10,031                           | \$ 127,982                            | \$ 1,027,214                                 | \$ 10,000                      | \$ 1,415,000              |
| 3  | ACP Mgmt | Northern  | Survey        | \$ 1,759,845                      | \$ 237,984               | \$ 301,280                          | \$ 1,521,861                          | \$ 996,401                                   | \$ (106,374)                   | \$ 715,011                |
| 4  | ACP Mgmt | Northern  | Treatment     | \$ 53,107                         | \$ 47,410                | \$ 42                               | \$ 5,697                              | \$ 28,143                                    | \$ -                           | \$ 381,044                |
| 5  | ACP Mgmt | Statewide | Biocontrol    | \$ 1,720,409                      | \$ 476,395               | \$ 205,187                          | \$ 1,244,014                          | \$ 1,004,529                                 | \$ (108,093)                   | \$ 707,500                |
| 6  | ACP Mgmt | Statewide | Survey        | \$ 1,000,000                      | \$ (60,852)              | \$ 164,700                          | \$ 1,060,852                          | \$ 1,513,904                                 | \$ (161,985)                   | \$ 2,856,144              |
| 7  | ACP Mgmt | Statewide | Regulatory    | \$ 3,257,844                      | \$ 1,390,569             | \$ 382,751                          | \$ 1,867,276                          | \$ 1,641,222                                 | \$ (531,588)                   | \$ 1,815,424              |
| 8  | HLB Det  | Southern  | Survey        | \$ 2,199,453                      | \$ 43,779                | \$ 236,342                          | \$ 2,155,674                          | \$ 1,376,119                                 | \$ (796)                       | \$ 4,161                  |
| 9  | HLB Det  | Statewide | Survey        | \$ 5,887,471                      | \$ 2,831,509             | \$ 398,188                          | \$ 3,055,963                          | \$ 3,535,681                                 | \$ (988)                       | \$ 4,973                  |
| 10 | HLB Det  | Statewide | Diagnostics   | \$ 3,556,269                      | \$ 2,002,676             | \$ 332,308                          | \$ 1,553,593                          | \$ 2,044,761                                 | \$ (202,858)                   | \$ 796,344                |
| 11 | HLB Erad | Southern  | Treatment     | \$ 6,179,634                      | \$ 1,741,252             | \$ 377,496                          | \$ 4,438,382                          | \$ 4,986,272                                 | \$ (267,273)                   | \$ 6,301,019              |
| 12 | HLB Erad | Statewide | Regulatory    | \$ 770,273                        | \$ 270,663               | \$ 64,436                           | \$ 499,610                            | \$ 528,027                                   | \$ -                           | \$ 0                      |
| 13 | ACP/HLB  | Statewide | Admin*        | \$ 2,073,024                      | \$ 837,627               | \$ 166,271                          | \$ 1,235,397                          | \$ 5,077,695                                 | \$ (3,867)                     | \$ 2,896                  |
| 14 | ACP/HLB  | Statewide | Outreach      | \$ 1,552,478                      | \$ 939,048               | \$ 79,952                           | \$ 613,430                            | \$ 1,184,868                                 | \$ (124,072)                   | \$ 2,705,675              |
| 15 | ACP/HLB  | Statewide | Data Analysis | \$ 1,245,934                      | \$ 452,404               | \$ 224,741                          | \$ 793,530                            | \$ 994,871                                   | \$ (160,834)                   | \$ 42,925                 |
| 16 | ACP Mgmt | Statewide | Diagnostics   | \$ 209,462                        | \$ 145,455               | \$ 5,851                            | \$ 64,007                             | \$ 124,529                                   | \$ -                           | \$ -                      |
| 17 | Indirect | Statewide | Indirect      | \$ 4,465,004                      | \$ 569,393               | \$ 606,408                          | \$ 3,895,611                          | \$ -   | \$ 18,015                      | \$ 119,815                |
|    |          |           |               |                                   |                          |                                     |                                       |  |                                |                           |
|    |          |           | <b>Totals</b> | <b>\$41,500,000</b>               | <b>\$15,346,430</b>      | <b>\$4,043,714</b>                  | <b>\$26,153,571</b>                   | <b>\$28,067,979</b>                          | <b>\$(1,978,911)</b>           | <b>\$18,532,071</b>       |

\*\$55,693 will be reallocated to other budgets line items in the future.

# FY 23-24 HLB E-Fund & LA-CYVCV Summary

| Program             | Expenditures to Date | Budget      | Remaining Balance |
|---------------------|----------------------|-------------|-------------------|
| HLB E-Fund- Ventura | \$246,508            | \$1,627,235 | \$1,380,727       |
| CYVCV- LA           | \$46,404             | \$250,000   | \$203,596         |

# FY 23-24 Revenue Summary

## Revenue Received

|  |             |
|--|-------------|
| Revenue Received To Date (October 2023 to March 2024)  | \$7,186,741 |
| Last Meeting (March 25, 2024) Revenue Received to Date | \$5,709,201 |
| Increased from last meeting to current                 | \$1,477,540 |



# FY 23-24 Carton Comparison

| FY23/24 Projected Cartons         | FY23/24 Projected Cartons (NASS)  | FY22/23 Projected Cartons (CPDPC) |
|-----------------------------------|-----------------------------------|-----------------------------------|
| 180,000,000<br>Cartons            | 180,400,000<br>Cartons            | 188,400,000<br>Cartons            |
| \$0.09/per carton<br>\$16,200,000 | \$0.09/per carton<br>\$16,236,000 | \$0.07/per carton<br>\$13,188,000 |

FY22/23 collected 186,041,257 cartons at \$0.07/ per carton, which was 98% of the projected cartons received

| Year to Date Revenue Received              | Revenue Amount | Cartons    |
|--|----------------|------------|
| Current YTD (\$0.09/per carton)            | \$7,186,741    | 79,852,677 |
| Prior Year FY22-23 YTD (\$0.07/per carton) | \$5,903,765    | 84,339,500 |

Converted assessment amounts to cartons for comparison

# FY 23-24 Clean Citrus Nursery Stock Program Summary

## Budget Summary

|   |           |
|---|-----------|
| Fund Balance  | \$255,036 |
| Revenue Received To Date (July 2023 to March 2024)        | \$23,702  |
| Expenditures to Date (July 2023 to March 2024)            | \$56,409  |
| Reimbursements Received To Date (July 2023 to March 2024) | \$28,870  |
| Net Balance   | \$251,199 |



**QUESTIONS?**



**Proposed Budget FY 2024-25**  
**July 1, 2024 - June 30, 2025**

| PC                          | Budget No. | Budget Name              | 2024-2025 Total Proposed Budget | Proposed Changes | FY 2023-24 Approved Budget | Indirect         | Total Personnel Services | Total OE&E       | Agreements        | Notes               |
|-----------------------------|------------|--------------------------|---------------------------------|------------------|----------------------------|------------------|--------------------------|------------------|-------------------|---------------------|
| 9999000536                  | 2          | Central ACP Survey       | 3,339,966                       | (348,387)        | 3,688,353                  |                  | 732,014                  | 308,618          | 2,299,334         |                     |
| 9999000935                  | 3          | ACP Central Treatment    | 1,625,803                       | (255,635)        | 1,881,438                  |                  | 875,488                  | 190,315          | 560,000           |                     |
| 9999000546                  | 4          | ACP Northern Survey      | 1,918,413                       | 158,568          | 1,759,845                  |                  | 749,313                  | 169,100          | 1,000,000         |                     |
| 9999000544                  | 5          | ACP Northern Treatment   | 77,981                          | 24,874           | 53,107                     |                  | 43,791                   | 34,190           | 0                 |                     |
| 9999000539                  | 8          | Biocontrol               | 1,711,920                       | (8,489)          | 1,720,409                  |                  | 666,582                  | 195,338          | 850,000           |                     |
| 9999000553                  | 9          | Grove Trapping           | 800,000                         | (200,000)        | 1,000,000                  |                  | 0                        | 0                | 800,000           |                     |
| 9999000114                  | 10         | ACP Regulatory           | 2,881,059                       | (376,785)        | 3,257,844                  |                  | 750,022                  | 86,978           | 2,044,059         |                     |
| 9999000558                  | 12         | HLB Southern Survey      | 2,553,349                       | 353,896          | 2,199,453                  |                  | 2,060,073                | 483,943          | 9,333             |                     |
| 9999000550                  | 13         | HLB Statewide Survey     | 5,708,476                       | (178,995)        | 5,887,471                  |                  | 4,669,478                | 881,490          | 157,508           |                     |
| 9999000164                  | 14         | HLB Diagnostics          | 3,298,801                       | (257,468)        | 3,556,269                  |                  | 1,593,151                | 905,650          | 800,000           |                     |
| 9999000113                  | 15         | HLB Southern Treatment   | 6,698,145                       | 518,511          | 6,179,634                  |                  | 3,040,643                | 627,132          | 3,030,370         |                     |
| 9999000116                  | 16         | HLB Statewide Regulatory | 859,630                         | 89,357           | 770,273                    |                  | 784,084                  | 75,546           | 0                 |                     |
| 9999000J21                  | 17         | Administration           | 2,102,629                       | 85,298           | 2,017,331                  |                  | 1,731,721                | 363,208          | 7,700             |                     |
| 9999000556                  | 18         | Outreach                 | 1,502,997                       | (49,481)         | 1,552,478                  |                  | 36,605                   | 66,392           | 1,400,000         |                     |
| 9999000549                  | 19         | Data Analysis            | 1,144,458                       | (101,476)        | 1,245,934                  |                  | 767,036                  | 105,924          | 271,498           |                     |
| 9999000163                  | 20         | ACP Diagnostics          | 168,027                         | (41,435)         | 209,462                    |                  | 143,570                  | 24,457           | 0                 |                     |
| 9999000524                  | 24         | Indirect                 | 4,236,662                       | (228,342)        | 4,465,004                  | 4,236,662        | 0                        | 0                | 0                 |                     |
| 9999000U03                  | 25         | HLB Central Survey       | 292,826                         | 292,826          | 0                          |                  | 240,097                  | 52,729           |                   | New budget program. |
| 9999000U04                  | 26         | HLB Central Treatment    | 655,958                         | 655,958          | 0                          |                  | 241,533                  | 64,425           | 350,000           | New budget program. |
| <b>Division Totals:</b>     |            |                          | <b>41,577,100</b>               | <b>132,793</b>   | <b>41,444,307</b>          | <b>4,236,662</b> | <b>19,125,201</b>        | <b>4,635,435</b> | <b>13,579,802</b> |                     |
| <b>% of Division Total:</b> |            |                          |                                 |                  |                            | <b>10.19%</b>    | <b>46.00%</b>            | <b>11.15%</b>    | <b>32.66%</b>     |                     |

**Clean Citrus Nursery Stock Program**

| PC         | #  | Budget               | 2024-2025 Total Proposed Budget | Amount Reduced | FY 2023-24 Approved Budget | Indirect | Total Personnel Services | Total OE&E | Agreements | Notes   |
|------------|----|----------------------|---------------------------------|----------------|----------------------------|----------|--------------------------|------------|------------|---|
| 9999000022 | 23 | Clean Citrus Program | 249,003                         | (6,033)        | 255,036                    | 0        | 128,503                  | 48,500     | 72,000     | 100% reimbursed through fees. Not funded using assessment, general, or federal funds. |

This program is 100% a reimbursement and has no impact to the Fund Condition Statement.

|                                       |                   |                |          |
|---------------------------------------|-------------------|----------------|----------|
| <b>Total Proposed Budget Summary*</b> | <b>Category</b>   | <b>Amount</b>  | <b>%</b> |
|                                       | Personnel         | 19,125,201     | 46.00%   |
|                                       | OE&E              | 4,635,435      | 11.15%   |
|                                       | Indirect          | 4,236,662      | 10.19%   |
|                                       | Agreement         | 13,579,802     | 32.66%   |
|                                       | <b>41,577,100</b> | <b>100.00%</b> |          |

|   |                   |                |          |
|---|-------------------|----------------|----------|
| <b>Budget Summary (Indirect Removed)*</b> | <b>Category</b>   | <b>Amount</b>  | <b>%</b> |
|   | Personnel         | 19,125,201     | 51.22%   |
|   | OE&E              | 4,635,435      | 12.41%   |
|   | Agreement         | 13,579,802     | 36.37%   |
|   | <b>37,340,438</b> | <b>100.00%</b> |          |

\*Excludes the Clean Citrus Nursery Stock Program

**Fund Condition Statement**  
**Citrus Pest and Disease Prevention Division**  
**Agriculture Fund**  
**April 30, 2024**

|  | <b>State Fiscal Year (FY)</b> |                   |                    |
|--|-------------------------------|-------------------|--------------------|
|  | 2022-23                       | 2023-24           | 2024-25            |
| <b>Resources</b>                         |                               |                   |                    |
| <u>Beginning Balance</u>                 |                               |                   |                    |
| Carry in                                 | 10,468,441                    | 1,163,840         | 4,425,666          |
| Prior Year Adjustments                   | 6,668,252                     | 8,803,992         |                    |
| Adjusted Balance:                        | 17,136,693                    | 9,967,832         | 4,425,666          |
| <br>                                     |                               |                   |                    |
| <u>Revenues</u>                          |                               |                   |                    |
| Assessments <sup>1</sup>                 | 13,511,406                    | 16,606,106        | 16,316,281         |
| <br>                                     |                               |                   |                    |
| <b>Total Resources:</b>                  | <b>30,648,099</b>             | <b>26,573,938</b> | <b>20,741,947</b>  |
| <br>                                     |                               |                   |                    |
| <b>Expenditures</b>                      |                               |                   |                    |
| Realized Costs <sup>2</sup>              | 28,222,455                    | 23,087,822        | 24,929,408         |
| Pro Rata                                 | 1,261,804                     | 1,323,953         | 1,308,280          |
| Unapplied Reimbursement <sup>3</sup>     | 0                             | (2,263,503)       |                    |
| <b>Total Expenditures:</b>               | <b>29,484,259</b>             | <b>22,148,272</b> | <b>26,237,688</b>  |
| <br>                                     |                               |                   |                    |
| <b>Fund Balance:</b>                     | <b>1,163,840</b>              | <b>4,425,666</b>  | <b>(5,495,741)</b> |
| <br>                                     |                               |                   |                    |
| Encumbrances <sup>4</sup>                | (53,067)                      | (11,280,212)      |                    |
| <br>                                     |                               |                   |                    |
| <b>Fund Balance (Less Encumbrances):</b> | <b>1,216,907</b>              | <b>15,705,878</b> | <b>(5,495,741)</b> |

**Notes:**

Fund condition statement is based on the state FY.

All figures are accurate as of the close of the FY indicated. All adjustments made post FY close are reflected in sequent years as prior year adjustments.

<sup>1</sup> Figures include revenue accruals as calculated by CDFA Financial Services. Will not tie to revenue reports presented to the Finance Subcommittee. Current year assessments estimated at 180,400,000 million cartons.

<sup>2</sup> These expenditures represent actual costs paid out of the Agriculture Fund. For the current FY, this amount represents total budget authority in the Agriculture Fund.

<sup>3</sup> Known Federal, General, and E-Fund reimbursements that will provide a credit to the Agriculture Fund at a future date. This information is added by program staff and is not yet reflected in Fi\$Cal.

<sup>4</sup> Possible, future expenditures that weren't realized at the time the FY closed.

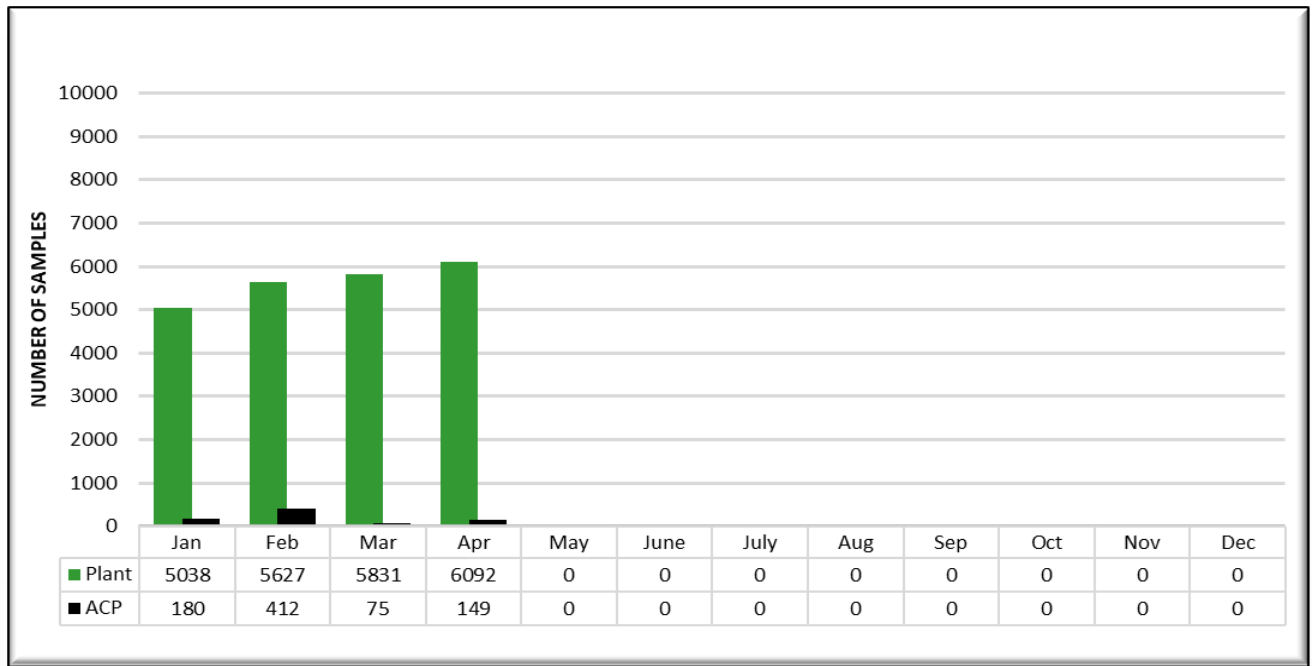
**FY 2023-24 and FY 2024-25 information provided is an estimate only. Fund condition statement will be updated to reflect actuals once the Budget Office provides a reconciled fund condition statement after FY 2023-24 closes.**



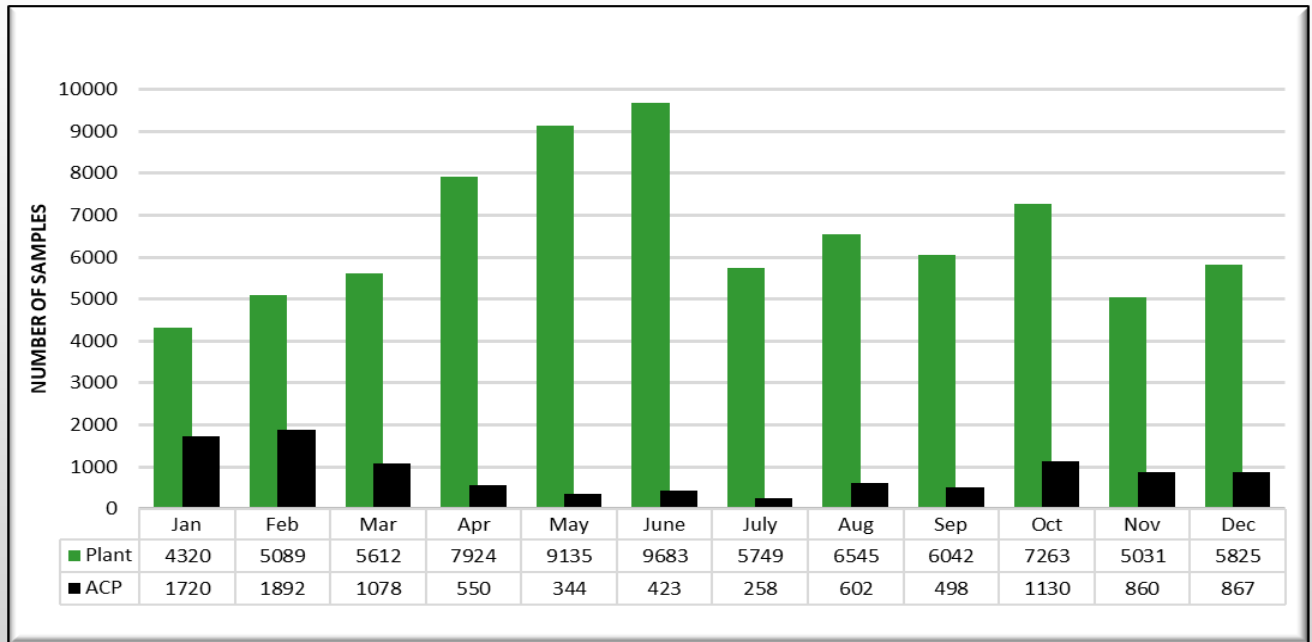
# California Department of Food & Agriculture Plant Pest Diagnostics Center HLB Testing Program 2024

Total number of plant and ACP samples per month – Fig. 1a, Fig1b  
Number of samples tested for HLB per year from 2008 –2023 – Fig. 2  
Tally of positive detections by county and city – Tables 1a-1d.  
Number of detections yearly from 2012-2024 for each county – Table 2  
Percent positives by county – Table 3  
Tally of RS and HLBR positive samples – Table 4  
If you have any questions, please call or email me at 916-738-6710 [lucita.kumagai@cdfa.ca.gov](mailto:lucita.kumagai@cdfa.ca.gov).

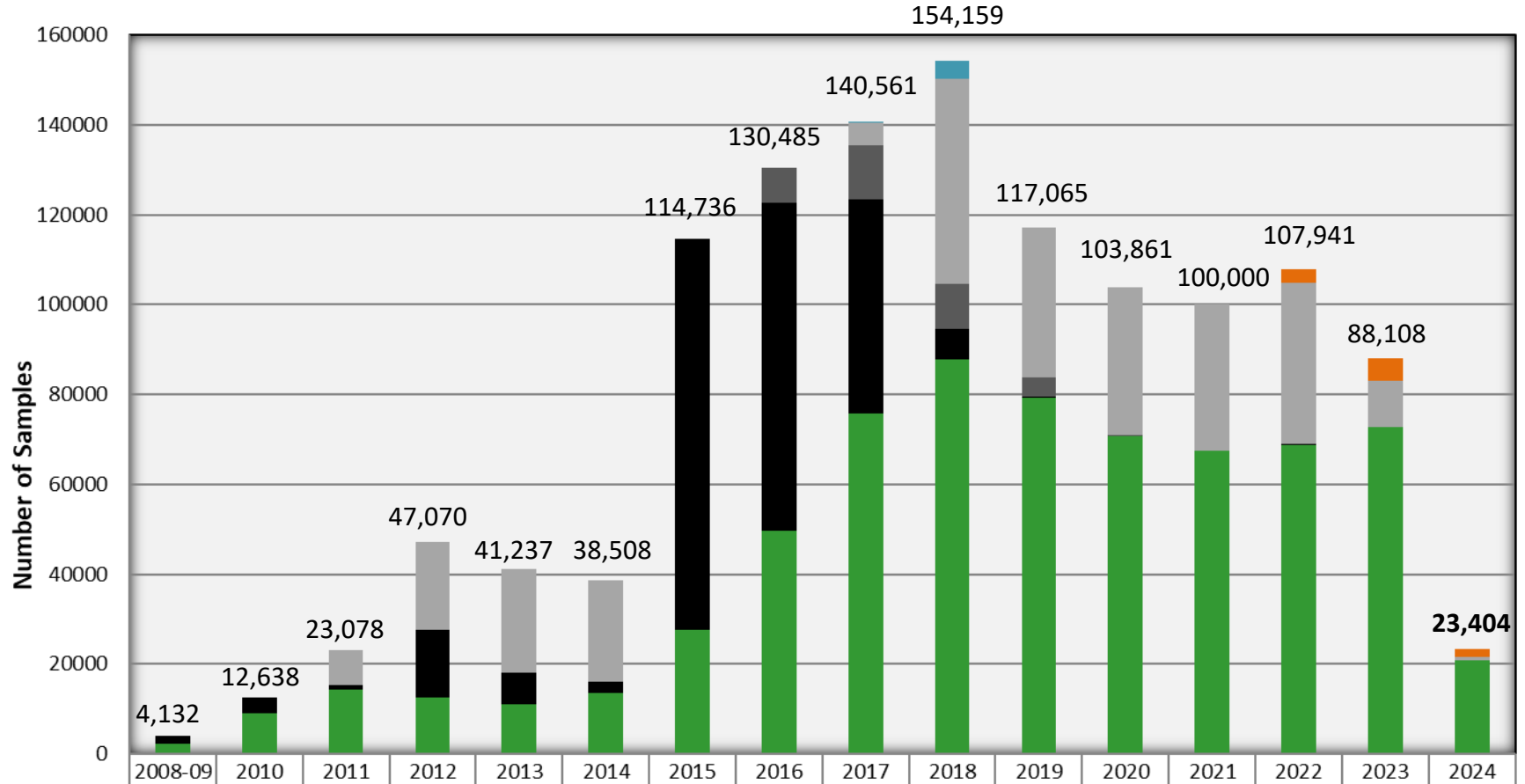
**Fig 1a. 2024 -**  
Total number of plant and ACP samples submitted per month.



**Fig 1b. 2023 -**  
Total number of plant and ACP samples submitted per month last year.



**Fig 2.** Number of samples tested for HLB per year from 2008 – 2024.



|            | 2008-09 | 2010 | 2011  | 2012  | 2013  | 2014  | 2015  | 2016  | 2017  | 2018  | 2019  | 2020  | 2021  | 2022  | 2023  | 2024  |
|------------|---------|------|-------|-------|-------|-------|-------|-------|-------|-------|-------|-------|-------|-------|-------|-------|
| CRB Plant  |         |      |       |       |       |       |       |       |       |       |       |       |       | 3122  | 5065  | 1755  |
| CPDP ACP   |         |      |       |       |       |       |       |       | 94    | 4020  | 0     | 0     | 0     | 0     | 0     | 0     |
| CRB ACP    |         |      | 7740  | 19380 | 23222 | 22568 | 0     | 0     | 5085  | 45550 | 33247 | 32920 | 32507 | 35948 | 10222 | 805   |
| U AZ ACP   |         |      |       |       |       |       |       | 7881  | 11896 | 10079 | 4310  | 205   | 0     | 0     | 0     | 0     |
| CDFA ACP   | 1923    | 3527 | 1105  | 15032 | 6872  | 2300  | 87052 | 72832 | 47619 | 6698  | 133   | 130   | 29    | 163   | 39    | 11    |
| CDFA Plant | 2209    | 9111 | 14233 | 12658 | 11143 | 13640 | 27684 | 49772 | 75867 | 87812 | 79375 | 70606 | 67464 | 68708 | 72782 | 20833 |

Combined total of plant and ACP samples tested from 2008 – 2024 is 1,246,983

Tables 1a-1d. Tally of positive sites, positive trees, and CLas+ ACP samples by city and county as of 4/26/2024.

| 2012-2024          | # Sites     | # Trees     | # ACP samples |
|--------------------|-------------|-------------|---------------|
| <b>Grand Total</b> | <b>5036</b> | <b>7729</b> | <b>795</b>    |

| <b>Orange County Positives</b> |             |             |               |
|--------------------------------|-------------|-------------|---------------|
| City                           | # Sites     | # Trees     | # ACP samples |
| Garden Grove                   | 718         | 1212        | 122           |
| Santa Ana                      | 694         | 1112        | 95            |
| Anaheim                        | 894         | 1509        | 162           |
| Westminster                    | 371         | 628         | 22            |
| Orange                         | 313         | 450         | 42            |
| Tustin                         | 52          | 64          | 10            |
| Fountain Valley                | 15          | 22          | 3             |
| Huntington Beach               | 27          | 30          | 2             |
| Placentia                      | 89          | 123         | 15            |
| La Habra                       | 5           | 6           | 1             |
| Fullerton                      | 17          | 22          | 8             |
| Yorba Linda                    | 36          | 36          | 7             |
| Irvine                         | 71          | 97          | 3             |
| Costa Mesa                     | 47          | 73          | 3             |
| Brea                           | 10          | 12          | 0             |
| Buena Park                     | 9           | 16          | 2             |
| Cypress                        | 5           | 1           | 5             |
| Stanton                        | 5           | 6           | 1             |
| Midway City                    | 8           | 15          | 0             |
| Los Alamitos                   | 1           | 0           | 1             |
| <b>Total</b>                   | <b>3387</b> | <b>5434</b> | <b>504</b>    |

| <b>Los Angeles County Positives</b> |             |             |               |
|-------------------------------------|-------------|-------------|---------------|
| City                                | # Sites     | # Trees     | # ACP samples |
| Whittier                            | 205         | 251         | 45            |
| Pico Rivera                         | 177         | 246         | 64            |
| Montebello                          | 80          | 111         | 2             |
| San Gabriel                         | 88          | 120         | 7             |
| Rosemead                            | 50          | 69          | 7             |
| Paramount                           | 29          | 35          | 5             |
| La Mirada                           | 53          | 72          | 6             |
| La Puente                           | 44          | 52          | 9             |
| Norwalk                             | 15          | 12          | 5             |
| Cerritos                            | 7           | 9           | 5             |
| Hacienda Heights                    | 5           | 5           | 1             |
| Lakewood                            | 5           | 6           | 0             |
| Duarte                              | 110         | 167         | 3             |
| El Monte                            | 74          | 106         | 8             |
| South El Monte                      | 23          | 43          | 4             |
| Alhambra                            | 3           | 4           | 0             |
| Temple City                         | 12          | 11          | 2             |
| Compton                             | 1           | 1           | 0             |
| Glendora                            | 1           | 0           | 1             |
| South Gate                          | 10          | 10          | 6             |
| Long Beach                          | 8           | 8           | 3             |
| Los Angeles                         | 7           | 6           | 1             |
| Downey                              | 28          | 35          | 5             |
| Carson                              | 4           | 3           | 1             |
| Monrovia                            | 20          | 28          | 0             |
| Rowland Heights                     | 2           | 0           | 2             |
| Pomona                              | 10          | 13          | 2             |
| Artesia                             | 7           | 8           | 0             |
| Bellflower                          | 5           | 5           | 0             |
| Monterey Park                       | 1           | 1           | 0             |
| West Covina                         | 1           | 0           | 1             |
| City of Industry                    | 1           | 2           | 0             |
| Claremont                           | 1           | 0           | 1             |
| Santa Fe Springs                    | 2           | 1           | 1             |
| Azusa                               | 8           | 16          | 2             |
| Covina                              | 1           | 0           | 1             |
| <b>Total</b>                        | <b>1098</b> | <b>1456</b> | <b>200</b>    |

| <b>Riverside County Positives</b>      |            |            |               |
|--|------------|------------|---------------|
| City                                   | # Sites    | # Trees    | # ACP samples |
| Corona                                 | 141        | 195        | 29            |
| Riverside                              | 27         | 29         | 5             |
| Eastvale                               | 2          | 2          | 0             |
| Jurupa Valley                          | 29         | 47         | 4             |
| Moreno Valley                          | 1          | 1          | 0             |
| Norco                                  | 2          | 4          | 0             |
| <b>Total</b>                           | <b>202</b> | <b>278</b> | <b>38</b>     |
| <b>San Bernardino County Positives</b> |            |            |               |
| Rancho Cucamonga                       | 3          | 7          | 2             |
| Montclair                              | 8          | 7          | 1             |
| Colton                                 | 6          | 11         | 3             |
| San Bernardino                         | 2          | 1          | 1             |
| Ontario                                | 200        | 327        | 21            |
| Fontana                                | 30         | 41         | 9             |
| Chino                                  | 18         | 28         | 2             |
| <b>Total</b>                           | <b>267</b> | <b>422</b> | <b>39</b>     |
| <b>San Diego County Positives</b>      |            |            |               |
| Fallbrook                              | 1          | 0          | 1             |
| Oceanside                              | 4          | 9          | 4             |
| Pauma Valley                           | 1          | 0          | 1             |
| Vista                                  | 1          | 0          | 1             |
| San Diego                              | 26         | 42         | 0             |
| Valley Center                          | 4          | 18         | 2             |
| <b>Total</b>                           | <b>37</b>  | <b>69</b>  | <b>9</b>      |
| <b>Ventura County Positives</b>        |            |            |               |
| Santa Paula                            | 45         | 70         | 5             |
| <b>Total</b>                           | <b>45</b>  | <b>70</b>  | <b>5</b>      |

**Table 2.** Number of positive detections by year from 2012 – 2024 for each county.

| County         | 2012     |          | 2015      |          | 2016      |          | 2017       |            | 2018       |           | 2019       |           | 2020       |           | 2021       |           | 2022        |            | 2023        |            | 2024       |           | TOTAL       |            |
|----------------|----------|----------|-----------|----------|-----------|----------|------------|------------|------------|-----------|------------|-----------|------------|-----------|------------|-----------|-------------|------------|-------------|------------|------------|-----------|-------------|------------|
|                | Plant    | ACP      | Plant     | ACP      | Plant     | ACP      | Plant      | ACP        | Plant      | ACP       | Plant      | ACP       | Plant      | ACP       | Plant      | ACP       | Plant       | ACP        | Plant       | ACP        | Plant      | ACP       | Plant       | ACP        |
| Orange         | -        | -        | -         | -        | -         | -        | 147        | 66         | 553        | 69        | 585        | 55        | 407        | 24        | 434        | 38        | 849         | 47         | 2031        | 197        | 428        | 8         | 5434        | 504        |
| Los Angeles    | 1        | 1        | 10        | 3        | 19        | 3        | 119        | 47         | 146        | 12        | 150        | 9         | 56         | 10        | 60         | 7         | 314         | 89         | 507         | 12         | 74         | 7         | 1456        | 200        |
| San Bernardino | -        | -        | -         | -        | -         | -        | -          | -          | 0          | 1         | 2          | 2         | 13         | 7         | 75         | 10        | 91          | 14         | 211         | 5          | 30         | 0         | 422         | 39         |
| Riverside      | -        | -        | -         | -        | -         | -        | 3          | 3          | 0          | 0         | 19         | 9         | 12         | 2         | 20         | 0         | 88          | 14         | 92          | 8          | 44         | 2         | 278         | 38         |
| San Diego      | -        | -        | -         | -        | -         | -        | -          | -          | -          | -         | -          | -         | 0          | 1         | 9          | 4         | 0           | 2          | 57          | 2          | 3          | 0         | 69          | 9          |
| Ventura        | -        | -        | -         | -        | -         | -        | -          | -          | -          | -         | -          | -         | -          | -         | -          | -         | -           | -          | 67          | 5          | 3          | 0         | 70          | 5          |
| <b>TOTAL</b>   | <b>1</b> | <b>1</b> | <b>10</b> | <b>3</b> | <b>19</b> | <b>3</b> | <b>269</b> | <b>116</b> | <b>699</b> | <b>82</b> | <b>756</b> | <b>75</b> | <b>488</b> | <b>44</b> | <b>598</b> | <b>59</b> | <b>1342</b> | <b>166</b> | <b>2965</b> | <b>229</b> | <b>582</b> | <b>17</b> | <b>7729</b> | <b>795</b> |

**Table 3.** Percent positive per county.

| County         | Sites       | Trees       | ACP         |
|----------------|-------------|-------------|-------------|
| Orange         | 67.3%       | 70.31%      | 63.4%       |
| LA             | 21.8%       | 18.84%      | 25.2%       |
| Riverside      | 4.0%        | 3.60%       | 4.8%        |
| San Bernardino | 5.3%        | 5.46%       | 4.9%        |
| San Diego      | 0.7%        | 0.89%       | 1.1%        |
| Ventura        | 0.9%        | 0.91%       | 0.6%        |
| <b>Total</b>   | <b>100%</b> | <b>100%</b> | <b>100%</b> |

**Table 4.** Tally of positive samples - Risk-based versus HLBR samples.

| Sample type       | Trees       |             | ACP        |             |
|-------------------|-------------|-------------|------------|-------------|
| Risk-based Survey | 508         | 7%          | 500        | 63%         |
| HLB Response      | 7221        | 93%         | 295        | 37%         |
| <b>Total</b>      | <b>7729</b> | <b>100%</b> | <b>795</b> | <b>100%</b> |



**Operational Update**

**CPDPC Meeting**


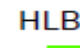


**May 8, 2024**

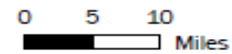




HLB Quarantine and Treatment Area

4/26/2024

-  HLB Quarantine Area
-  HLB Treatment Area
-  Mandatory
-  Non-mandatory

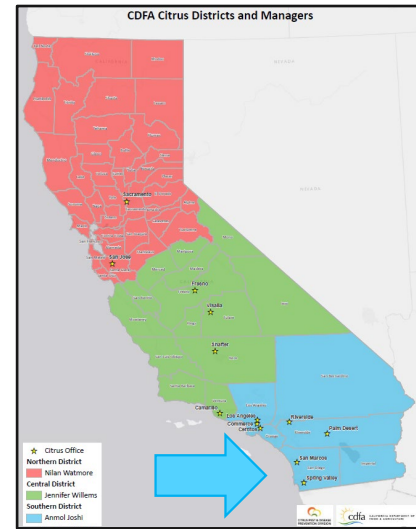


Fallbrook, Dec. 2020

Pauma Valley, June 2022

Vista, June 2022

# Southern District



## ➤ HLB Detection Updates

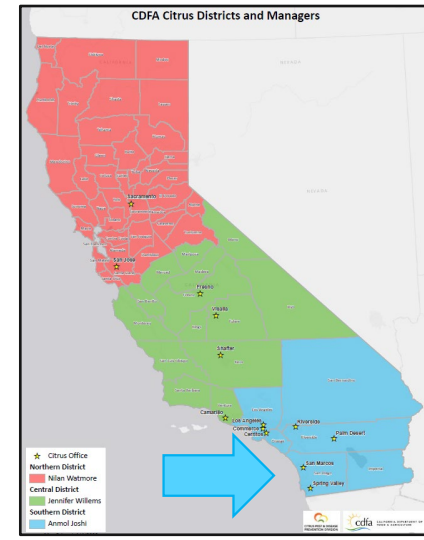
- A total of 582 positive trees were detected since January 2024.
  - Most of the detections were in the cities of Anaheim, Corona, Costa Mesa, Duarte, Garden Grove, Irvine, La Puente, Ontario, Orange, San Gabriel, and Santa Ana.
- **Valley Center, San Diego County**
  - Two additional positive trees were detected in March.
    - A total of 18 HLB positive trees were detected.
  - Both infected trees were removed.
  - Grower Liaison is working with the owners of 25+ properties to conduct treatments.
  - Delimitation survey was completed.
  - There are still six plant sample PDRs pending results.

# Southern District



## Delimitation Survey and Treatments

| County         | Areas   |
|----------------|---|
| Los Angeles    | Azusa, Duarte, Glendora, La Puente, Los Angeles, San Gabriel, and South Gate                                |
| Orange         | Anaheim, Brea, Costa Mesa, Garden Grove, Irvine, Midway City, Orange, Placentia, Santa Ana, and Yorba Linda |
| Riverside      | Corona, Jurupa Valley, and Riverside  |
| San Bernardino | Ontario   |
| San Diego      | Valley Center   |



- Six public meetings were conducted to treat delimitation areas in Los Angeles, Orange, Riverside, and San Bernardino Counties.

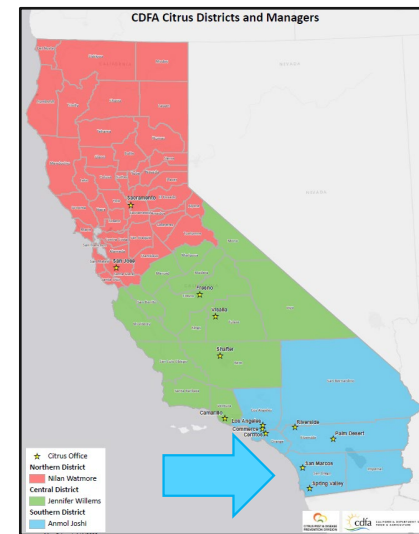
# Southern District

## HLB Positive Trees

| County         | Trees Removed (Feb-Apr) | Cumulative Pending Trees |
|----------------|-------------------------|--------------------------|
| Los Angeles    | 60                      | 9                        |
| Orange         | 366                     | 238                      |
| Riverside      | 51                      | 8                        |
| San Bernardino | 24                      | 10                       |
| San Diego      | 2                       | 0                        |
| <b>Total</b>   | <b>503</b>              | <b>265</b>               |

### Quadrant Samples – Find Site, Adjacent, Inconclusive (Feb- Apr)

|                |              |
|----------------|--------------|
| Los Angeles    | 381          |
| Orange         | 310          |
| Riverside      | 103          |
| San Bernardino | 126          |
| San Diego      | 190          |
| Imperial       | 3            |
| <b>Total</b>   | <b>1,113</b> |



# Central District



## ➤ County ACP Detections

- No ACP detections since January 31, 2024.

## ➤ Trapping Activities

- ACP delimitation, detection, grove trapping activities are on-going.

## ➤ Biocontrol

- *Tamarixia* releases in Ventura County are on-going.

## ➤ Survey Activities

- Citrus commodity surveys are on-going.
- CYVCV is on-going.





# Santa Paula, Ventura County

- There have been no new HLB+ trees reported since February 9.
- Warrant application sent to DOJ on April 26.



| Total Properties Surveyed | Total Survey Refusals | Total Properties Treated | Total Treatment Refusals | Total HLB+ Trees | Total HLB+ Trees Removed | Total Tree Removal Refusals |
|---------------------------|-----------------------|--------------------------|--------------------------|------------------|--------------------------|-----------------------------|
| 1,381                     | 17                    | 652                      | 36                       | 70               | 60                       | 9                           |

# Northern District



- **ACP Detection Trapping**
  - Ongoing trapping in Placer, San Joaquin, and Stanislaus Counties.
  - Finalizing recommendation to optimize winter trapping activities done by County Ag Commissioner staff in 15 counties.
- **ACP Delimitation Trapping**
  - Santa Clara County – 980 delimitation traps.
- **County ACP Detections**
  - Santa Clara County - 6 new detections since last committee meeting on February 21.

# Northern District



## ➤ ACP Treatment

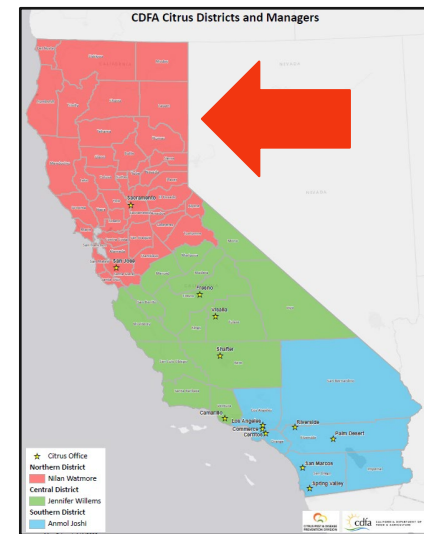
- No new treatments since December 2022.
- Completed visual hot spot survey in preparation for treatment in May.

## ➤ Biocontrol

- *Tamarixia* releases ongoing in San Jose, Santa Clara County.
- Average 6,000 releases monthly.

## ➤ HLB Risk-Based / Multi-Pest Survey

- Risk Survey 2023 Cycle 2
  - Currently at 32% of 17 counties complete through April 2024.
  - 4 of 17 counties completed.
  - Anticipated to reach 100% completion by end of May 2024.



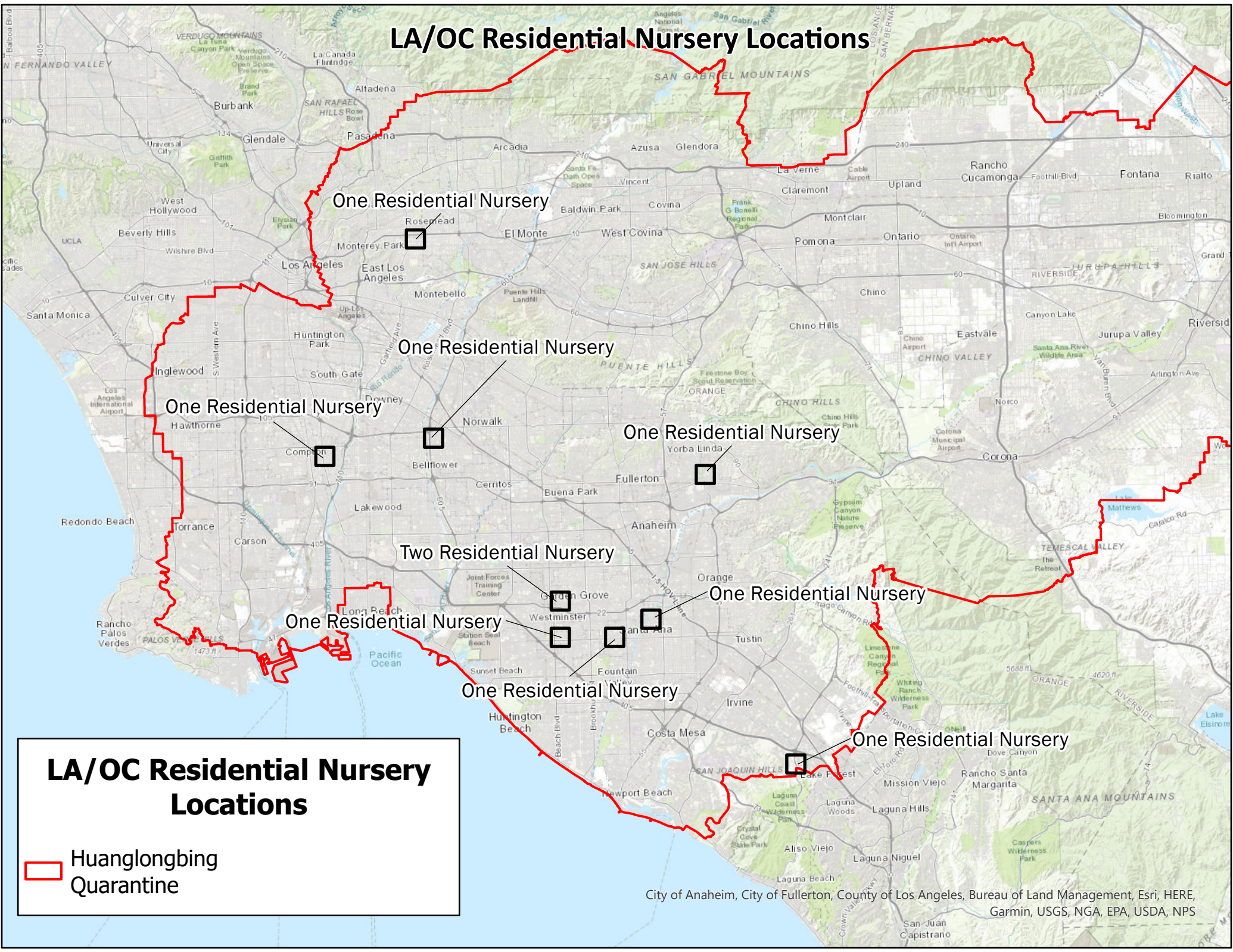


**County Monthly Activity Report  
October 2023 - Feb 2024**


| County          | FY 2023-24<br>Budget Amount | Percent<br>Expended | CA's<br>Issued | Grower<br>Inspections | Transporter<br>Inspections | Packer/Processor<br>Inspections | Fruit Seller<br>Inspections | Harvester/FLC<br>Inspections | Regulatory<br>Incidents | NOVs<br>Issued | NOPAs    |
|-----------------|-----------------------------|---------------------|----------------|-----------------------|----------------------------|---------------------------------|-----------------------------|------------------------------|-------------------------|----------------|----------|
| Fresno (*5)     | \$105,077.25                | 0%                  | 0              | 0                     | 0                          | 0                               | 0                           | 0                            | 0                       | 0              | 0        |
| Imperial        | \$57,684.66                 | 51%                 | 6              | 16                    | 12                         | 2                               | 0                           | 0                            | 0                       | 0              | 0        |
| Kern            | \$80,000.00                 | 39%                 | 99             | 9                     | 293                        | 4                               | 0                           | 1                            | 1                       | 4              | 0        |
| Kings           | \$19,602.20                 | 27%                 | 0              | 0                     | 0                          | 37                              | 0                           | 0                            | 0                       | 0              | 0        |
| Los Angeles     | \$291,633.41                | 30%                 | 2              | 18                    | 0                          | 0                               | 172                         | 0                            | 0                       | 0              | 0        |
| Monterey        | \$15,760.55                 | 29%                 | 2              | 13                    | 0                          | 0                               | 0                           | 0                            | 0                       | 0              | 0        |
| Orange (*4)     | \$88,048.50                 | 2%                  | 0              | 6                     | 0                          | 0                               | 0                           | 0                            | 0                       | 0              | 0        |
| Riverside       | \$751,593.75                | 57%                 | 11             | 71                    | 501                        | 2                               | 4                           | 0                            | 0                       | 5              | 0        |
| San Bernardino  | \$18,674.83                 | 4%                  | 0              | 1                     | 0                          | 0                               | 0                           | 0                            | 0                       | 0              | 0        |
| San Diego (*1)  | \$612,471.94                | 37%                 | 4              | 59                    | 51                         | 28                              | 43                          | 0                            | 0                       | 9              | 0        |
| San Luis Obispo | \$8,676.04                  | 60%                 | 6              | 0                     | 0                          | 0                               | 0                           | 0                            | 0                       | 0              | 0        |
| Santa Barbara   | \$12,785.73                 | 80%                 | 3              | 1                     | 3                          | 0                               | 11                          | 0                            | 0                       | 0              | 0        |
| Tulare          | \$410,044.56                | 43%                 | 144            | 0                     | 1,747                      | 6                               | 10                          | 0                            | 0                       | 33             | 2        |
| Ventura (*5)    | \$284,784.70                | 0%                  | 0              | 0                     | 0                          | 0                               | 0                           | 0                            | 0                       | 0              | 0        |
| <b>Total</b>    | <b>\$ 2,756,838.12</b>      | <b>37%</b>          | <b>277</b>     | <b>194</b>            | <b>2,607</b>               | <b>79</b>                       | <b>240</b>                  | <b>1</b>                     | <b>1</b>                | <b>51</b>      | <b>2</b> |

(\*#) = number of invoices missing from reporting period

# LA/OC Residential Nursery Locations



**LA/OC Residential Nursery Locations**

 Huanglongbing Quarantine

City of Anaheim, City of Fullerton, County of Los Angeles, Bureau of Land Management, Esri, HERE, Garmin, USGS, NGA, EPA, USDA, NPS



# Asian Citrus Psyllid Biocontrol Update



April  
2024



CITRUS PEST & DISEASE  
PREVENTION DIVISION  
CALIFORNIA DEPARTMENT OF FOOD AND AGRICULTURE

# Biological Control Agent Releases

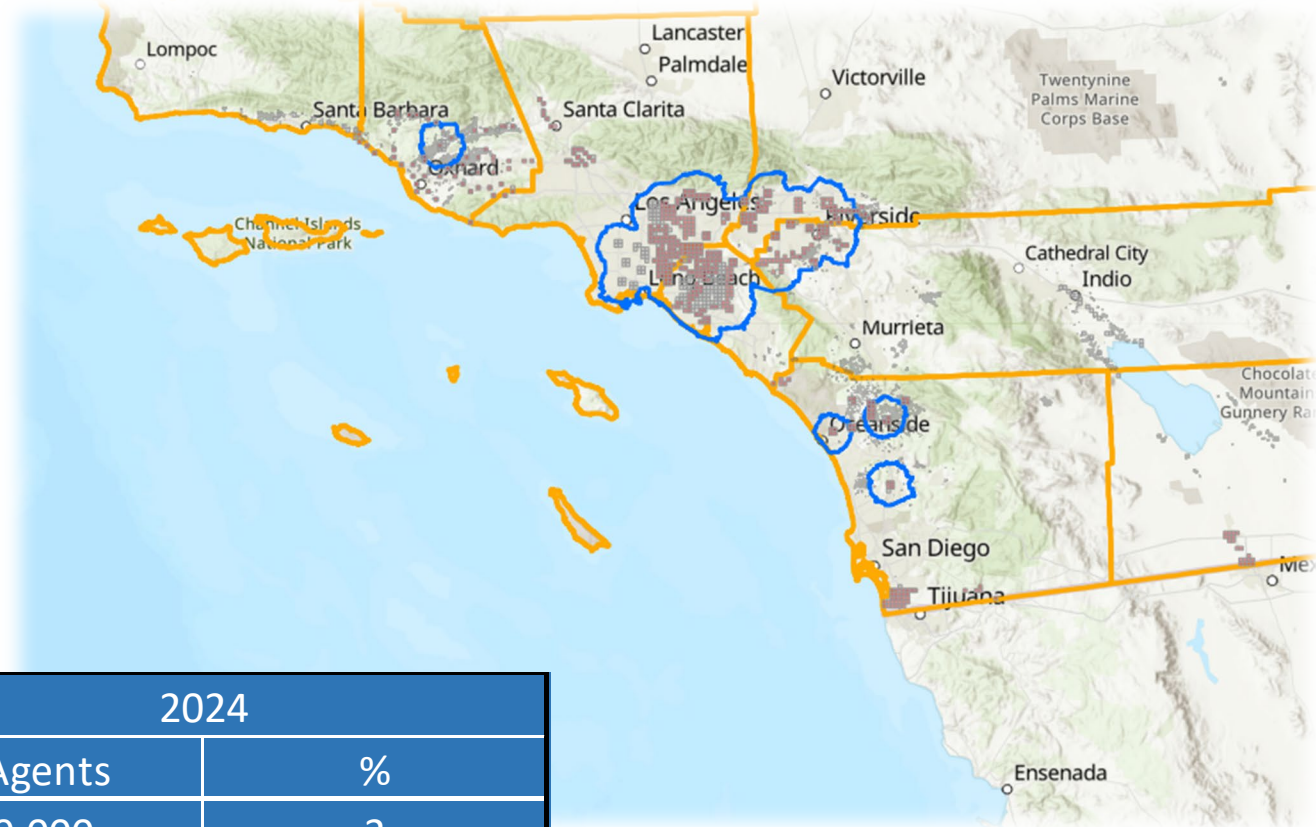
| County          | Releases Previous Month   | Releases, 2024             | Releases 2011-2023         |                                 |
|-----------------|---------------------------|----------------------------|----------------------------|---------------------------------|
|                 | April 2024                | <i>T. radiata</i> Released | <i>T. radiata</i> Released | <i>D. aligarhensis</i> Released |
| Imperial        | 8,000                     | 19,000                     | 674,543                    | 10,295                          |
| Los Angeles     | 47,600                    | 192,300                    | 8,225,624                  | 107,734                         |
| Orange          | 31,300                    | 160,600                    | 6,477,116                  | 71,179                          |
| Riverside       | 18,600                    | 57,800                     | 4,158,202                  | 127,739                         |
| San Bernardino  | 16,000                    | 53,100                     | 2,313,815                  | 57,252                          |
| San Diego       | 19,700                    | 64,700                     | 3,259,564                  | 86,403                          |
| Ventura         | 16,800                    | 60,500                     | 2,480,206                  | 16,830                          |
| Santa Barbara   | 0                         | 12,600                     | 418,782                    | 12,012                          |
| Kern            | 0                         | 3,200                      | 407,664                    | 0                               |
| Santa Clara     | 6,000                     | 22,000                     | 312,037                    | 0                               |
| Placer          | 0                         | 0                          | 3,400                      | 0                               |
| San Luis Obispo | 0                         | 0                          | 139,200                    | 0                               |
| Tulare          | 0                         | 0                          | 63,400                     | 0                               |
| Fresno          | 0                         | 0                          | 27,000                     | 0                               |
| Monterey        | 0                         | 0                          | 29,000                     | 0                               |
| Madera          | 0                         | 0                          | 5,600                      | 0                               |
| Arizona         | 0                         | 0                          | 253,500                    | 0                               |
| Mexico          | 0                         | 0                          | 306,000                    | 0                               |
| TOTAL           | 164,000                   | 645,800                    | 29,554,653                 | 489,444                         |
|                 | <b>TOTAL (2011-2021):</b> |                            |                            | <b>30,044,097</b>               |



# Biological Control Agent Release Areas

## Releases in:

- HLB Quarantine areas
- Borders
- Trade routes
- Area-wide management
- Newly established ACP

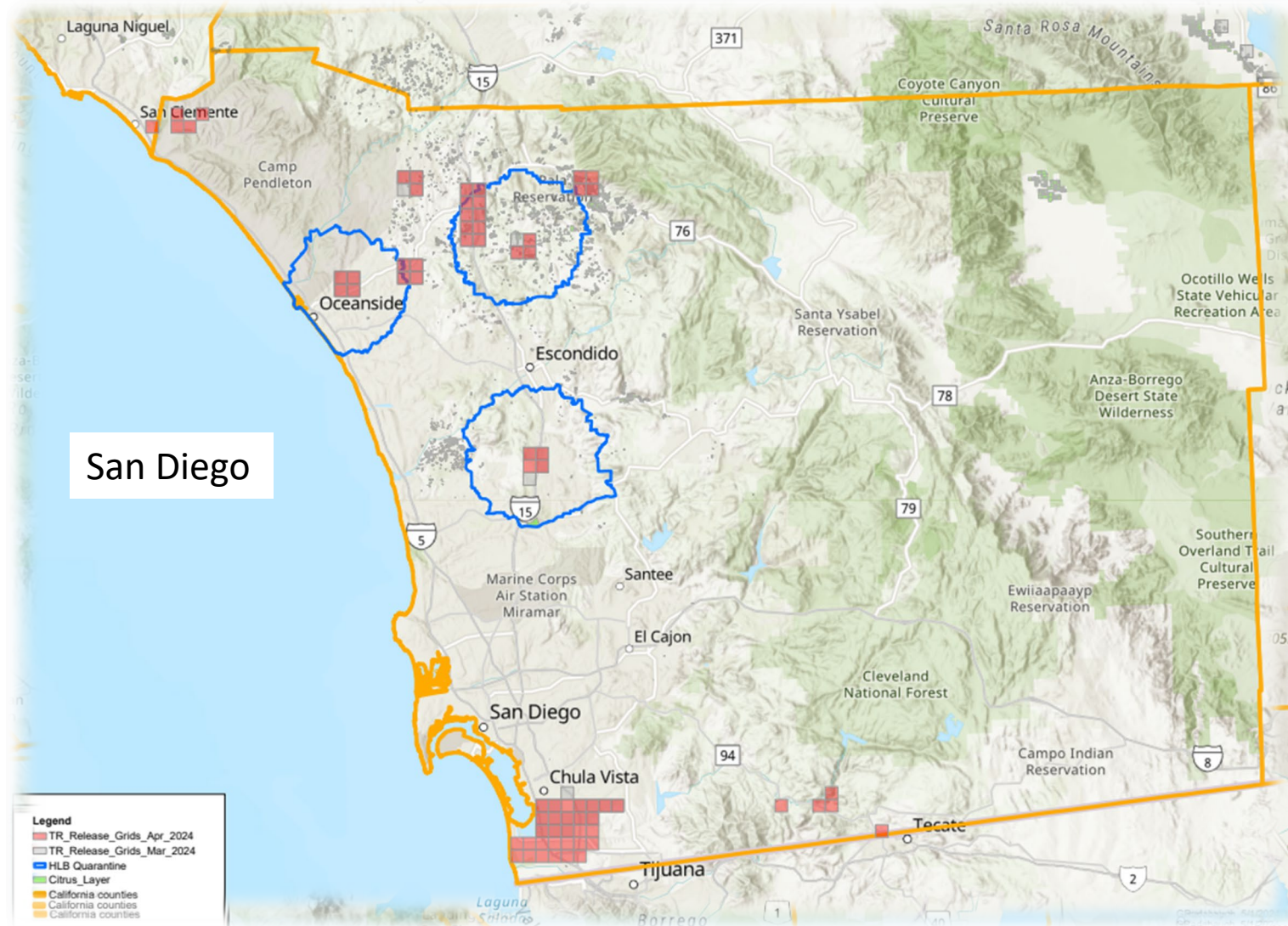


| Release Type | 2023      |    | 2024     |    |
|--------------|-----------|----|----------|----|
|              | # Agents  | %  | # Agents | %  |
| Borders      | 99,800    | 4  | 19,000   | 3  |
| HLB          | 1,889,615 | 80 | 528,500  | 82 |
| New          | 147,900   | 6  | 25,200   | 4  |
| Routes       | 232,300   | 10 | 73,100   | 11 |

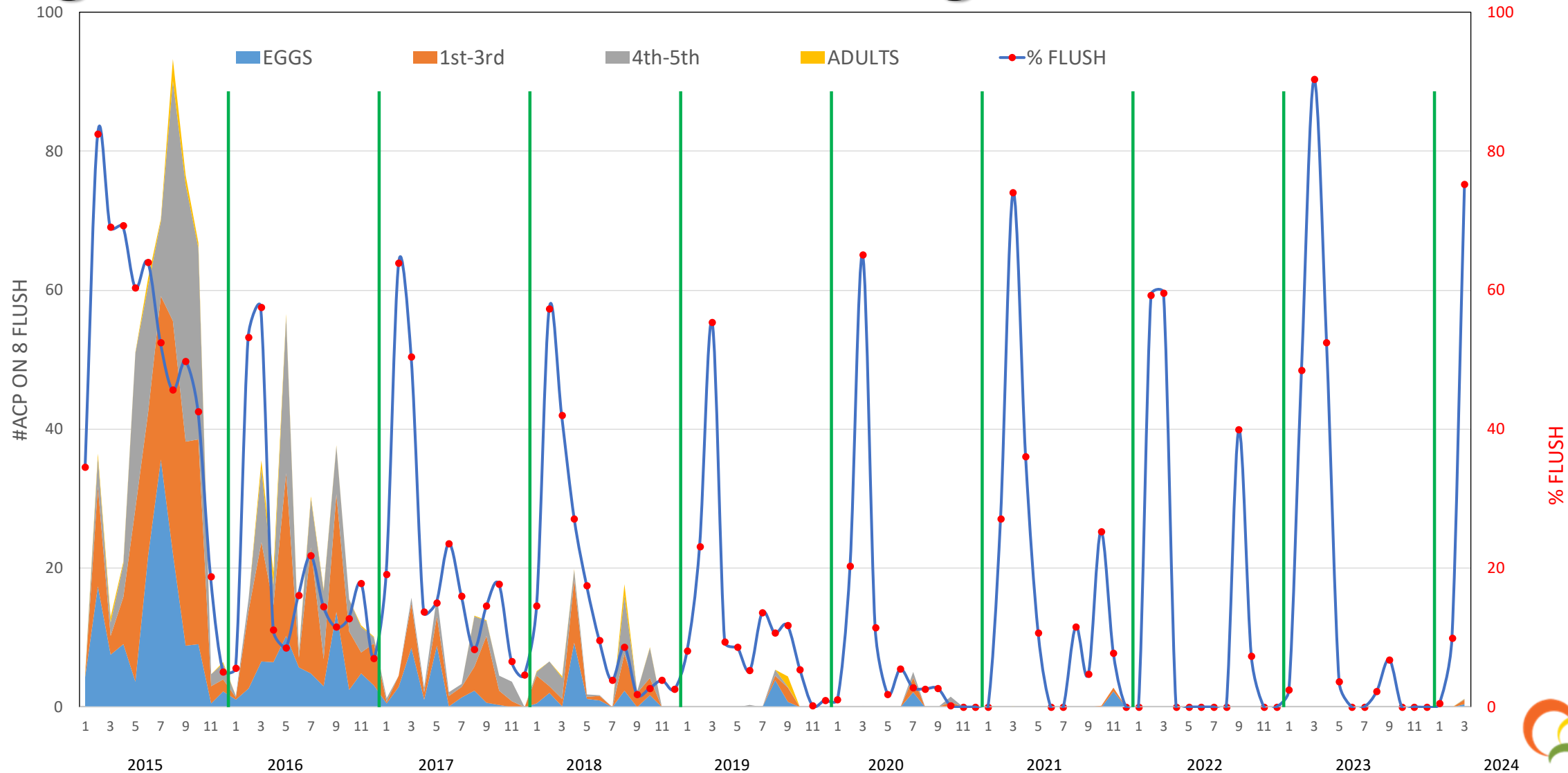




# Biological Control Agent Release Areas



# Region-Wide Urban Monitoring 2015 - Present





# Outreach Activities, April

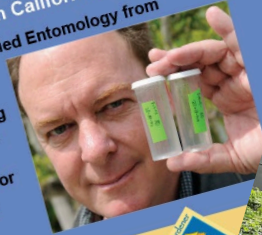
## Free Workshop Invasive Insects

Controlling the Asian Citrus Psyllid (ACP)  
By David Morgan Ph.D., Environmental Program Manager for the California Department of Food and Agriculture

Saturday, April 6, 2024 • 10 am

Learn about this invasive insect pest and the production, release, and monitoring of ACP biological control agents throughout Southern California.

Dr. Morgan holds a MS and PhD in Applied Entomology from Imperial College, London University. David started California's program to manage the Asian Citrus Psyllid using biological control agents in 2012. He is in charge of three facilities that produce biological control agents for use in the state's sustainable pest management activities.



Ask a Master Gardener First Saturdays from 9 - noon.  
Stop by the Master Gardener booth to have all your gardening questions answered.



Open Daily, 8 am to 4 pm  
4500 Glenwood Dr., Riverside, 92501  
For more information, please contact us at (951) 683-7691 ext. 207  
or llc@RCRCD.org



CITRUS PEST & DISEASE  
PREVENTION DIVISION  
CALIFORNIA DEPARTMENT OF FOOD AND AGRICULTURE

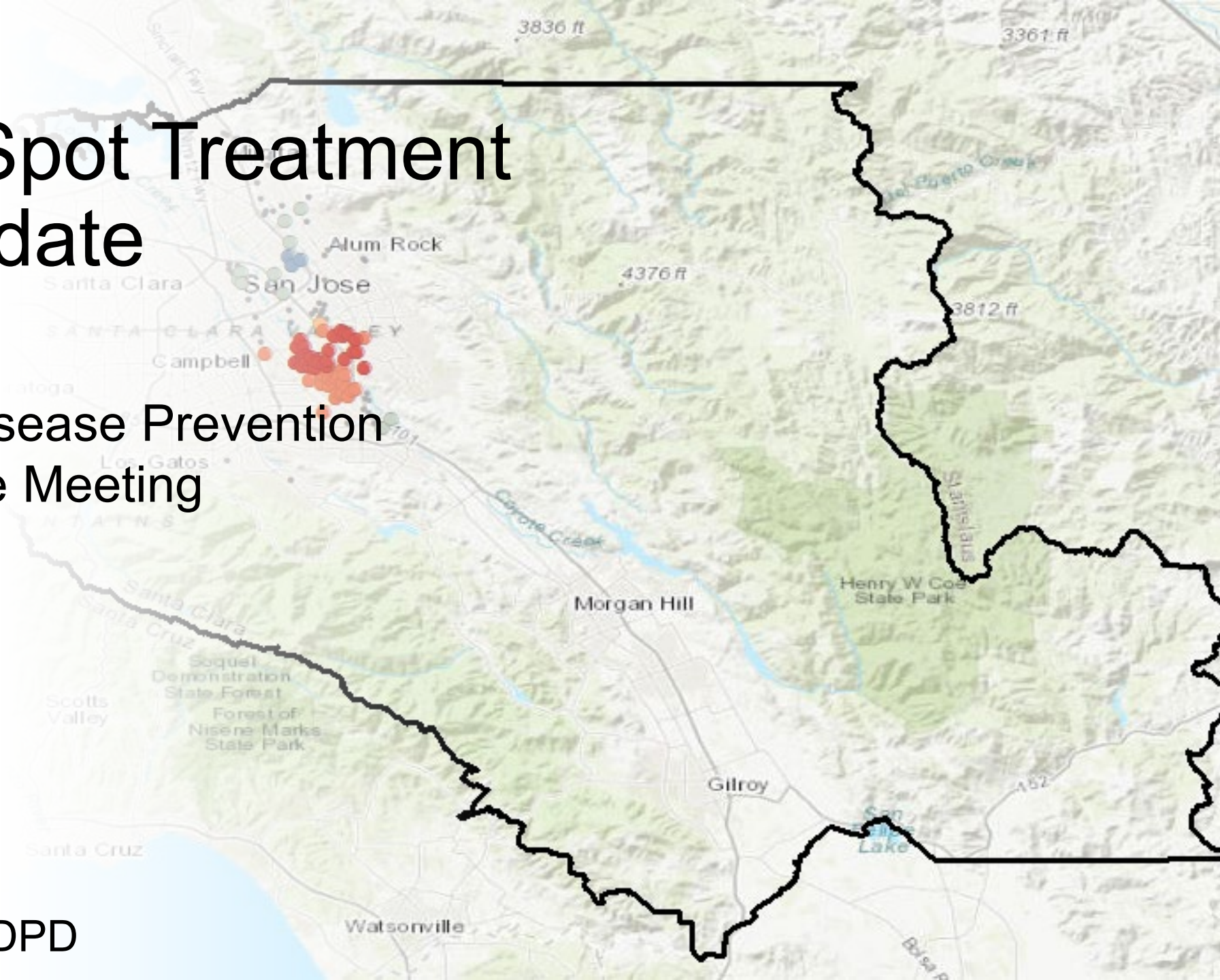


# Santa Clara Spot Treatment Update

Citrus Pest and Disease Prevention  
Committee Meeting

May 8, 2024

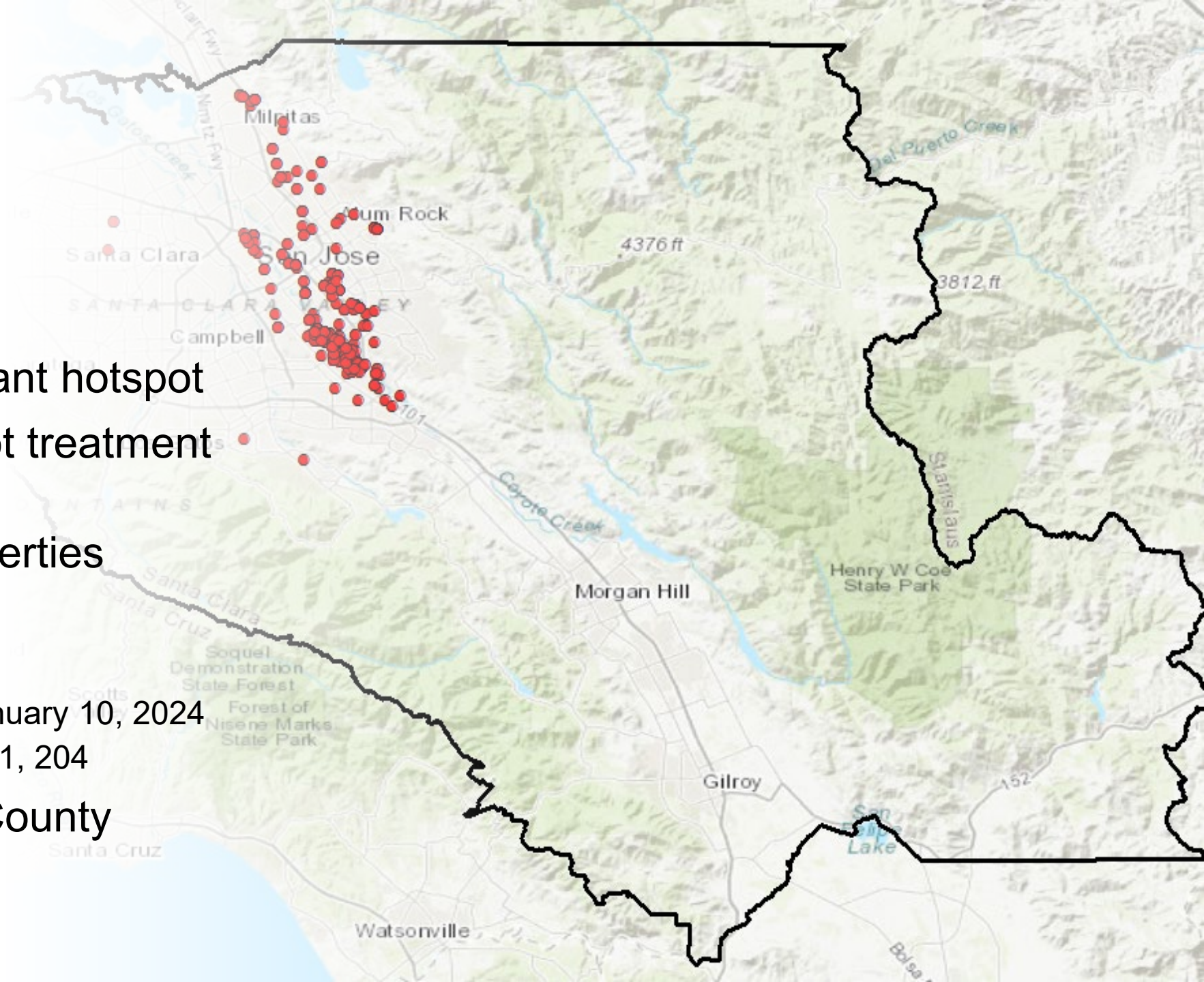
Ravneet Behla  
Program Supervisor  
Northern District, CPDPD





# Background

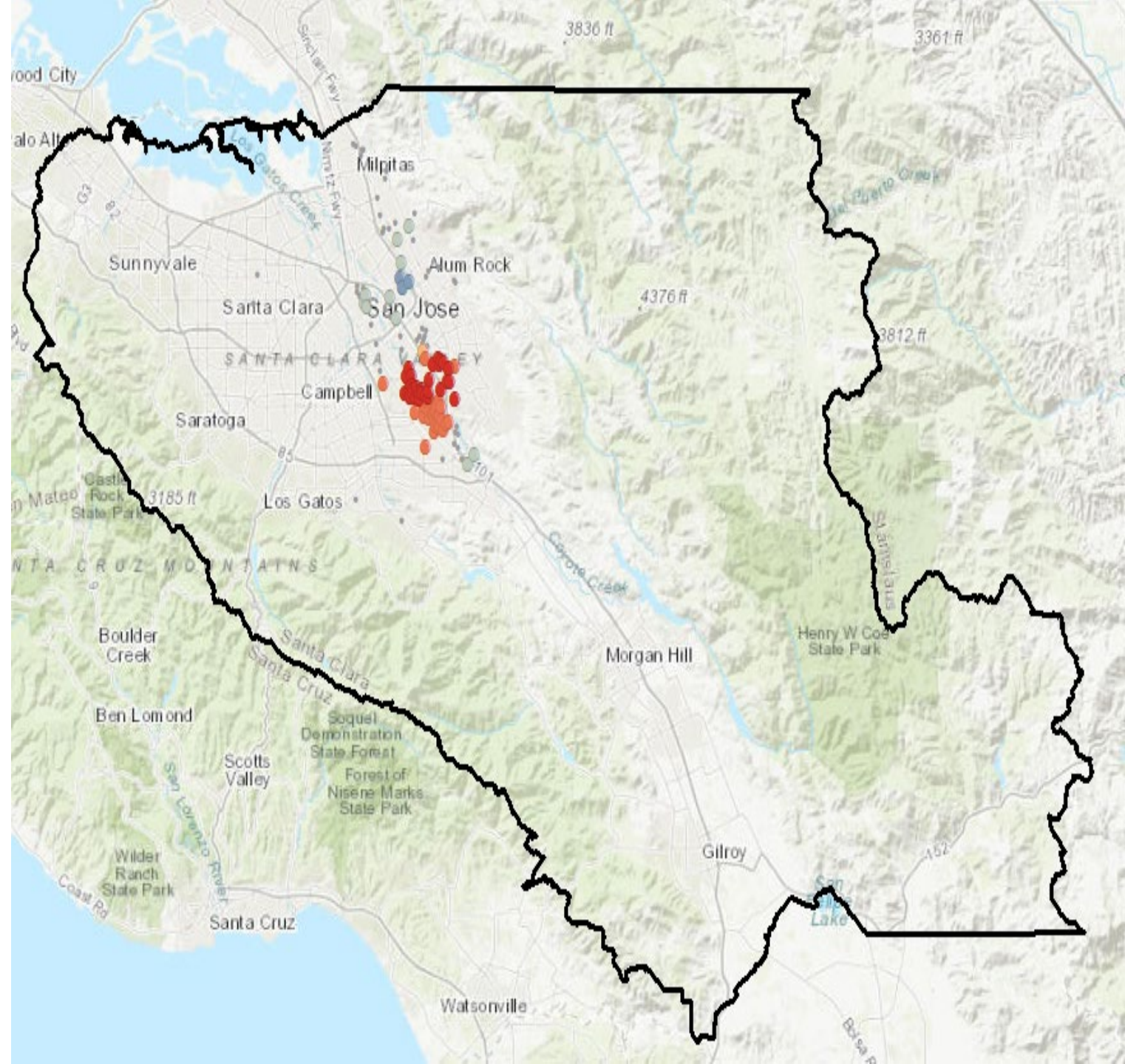
- Statistically significant hotspot
- Recommended spot treatment
  - Repeat find sites
- Maximum 180 properties
  - Budget: ~\$ 7,000
- Motions Approved
  - Ops Committee – January 10, 2024
  - CPDPC – February 21, 2024
- Coordinating with County





# Sites

- Visual Survey
  - ~140 properties
  - Complete
- PEP
  - 18 properties and adjacent
  - In process, May 2024
- Spot Treatment
  - May – June 2024





- Questions?
- Thank You!





# Outreach Update

May 8, 2024



CITRUS PEST & DISEASE  
PREVENTION PROGRAM

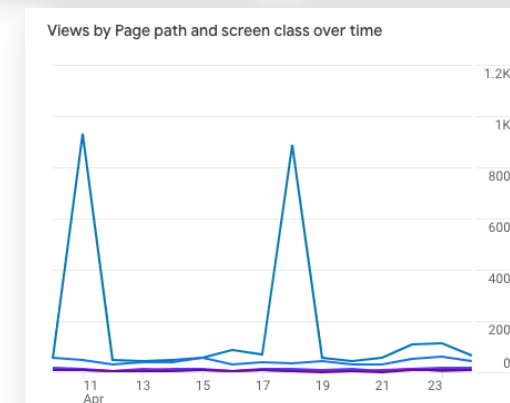
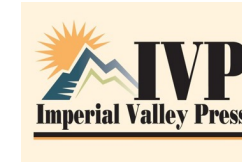




# Recent and Upcoming Outreach Activities

# Recap: Invasive Plant Pest and Disease Awareness Month

- Press release distributed to encourage residents to remain vigilant when inspecting their trees
  - 137 online postings
  - 876,600 potential audience
  - Website users increased by 16% from March to April on CaliforniaCitrusThreat.org
- Earned media outreach
- Social media advertising
- Elected official outreach
  - Distributed content and shareable social media assets to elected and appointed officials across the state
  - 19% open rate



*Spikes in website page visits during April following outreach*



# Connecting with Residents

## Hyperlocal Outreach and Media Relations

### Positioning CPDPP as a Resource for Residents

- Ongoing coordination and support for local media stories
  - CBS 8 San Diego, La Mejor and La Opinión
- Audio news release development and distribution
  - Spring gardening best practices – inspect and report
  - English and Spanish



### Engaging with Third-Party Voices

- Collaborating with UCANR on public outreach events and activities
- Outreach to California Rare Fruit Growers' chapters
  - Santa Cruz Chapter Panel Presentation
- Outreach to gardening clubs and associations
- Influencer partnerships

### Reaching Residents at Home

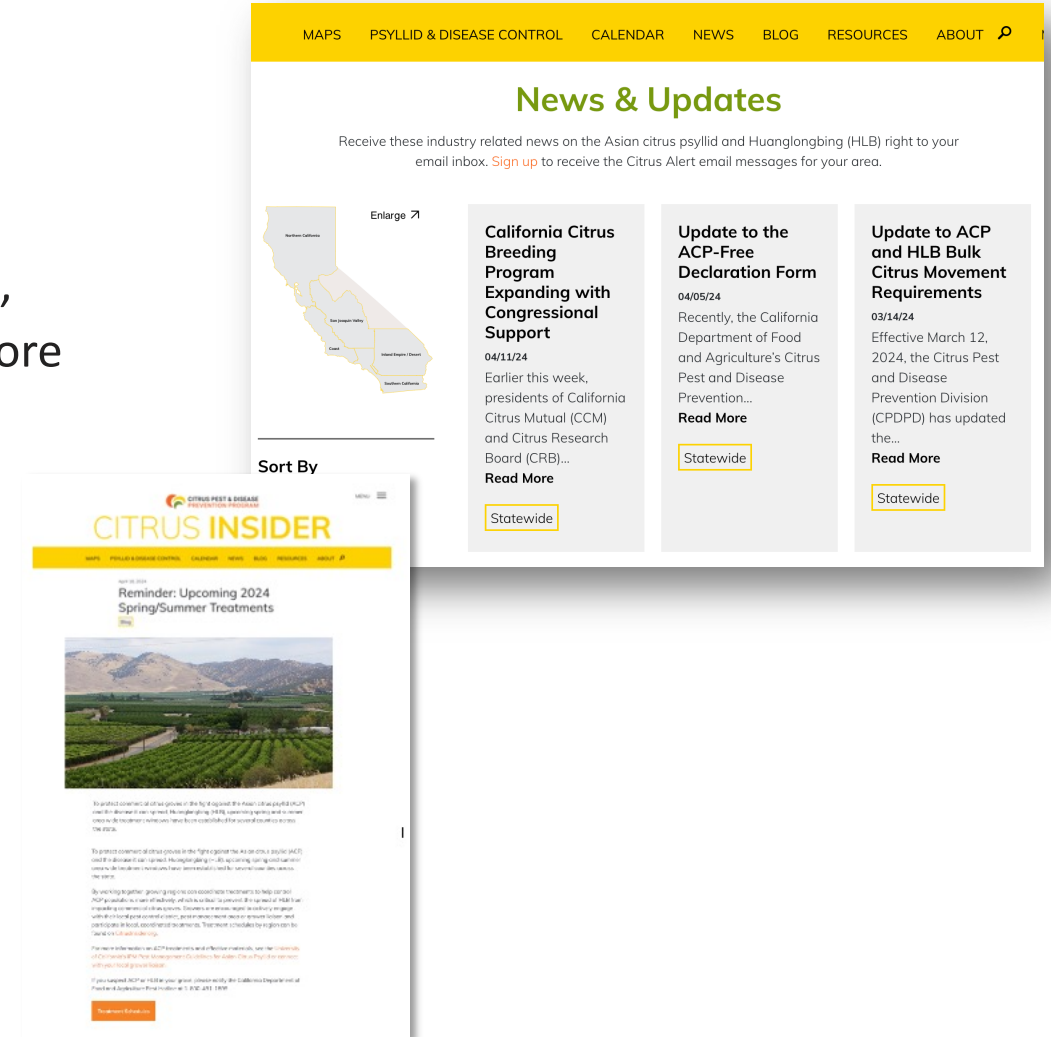
- Orange County door hanger distribution and targeted social media ads



# Industry Outreach Activities

## Citrus Insider Updates

- Website updates
  - Other Invasive Pests and Diseases webpage
    - Information and resources for Invasive fruit flies, Sweet orange scab, CYVCV, Citrus Canker and more
- News and e-blast distribution
  - Distributed four Citrus Insider e-blasts
    - Update to ACP and HLB Bulk Citrus Movement Requirements
    - Update to the ACP- Free Declaration Form
    - California Citrus Breeding Program Expanding with Congressional Support
    - Upcoming 2024 Spring/Summer Treatments
  - 50.6% open rate
- Calendar event updates
  - Grower meetings



# Industry Outreach Activities

## Engaging With Industry Members

- Nursery outreach
  - Reactive Q&A messaging development
- Industry resources and materials
  - Safeguarding citrus materials, including proper tarping techniques
- “Train-the-Trainer” workshops
  - Exploring opportunities to conduct training workshops – in English and Spanish – in the coming months for ACP scouting and best practices
- Pest Control Adviser outreach
  - Participating on a panel during a citrus breakout session at the CAPCA Annual Conference in October



**TARPING COMPLIANCE REQUIREMENTS AND BEST PRACTICES**

To prevent the spread of a dangerous pest called the Asian citrus psyllid (ACP) to commercial citrus, the movement of bulk citrus without proper tarping techniques and an ACP compliance agreement is prohibited.

**TARPING DO'S AND DON'TS**

-  All vehicles must have an on-board copy of their ACP Free Declaration form if moving to a different quarantine zone.
-  All loads of citrus must be segregated, fully enclosed or covered, whenever in transit.
-  Tarping must be down to the truck bed.

 You will receive a violation from the county agricultural commissioner's office if there is improper tarping or if the load is not fully enclosed.

  A properly tarped truck.

  A fully enclosed truck.

  Tarping must be down to the truck bed.

  The vehicle must have proper tarping or be fully enclosed.

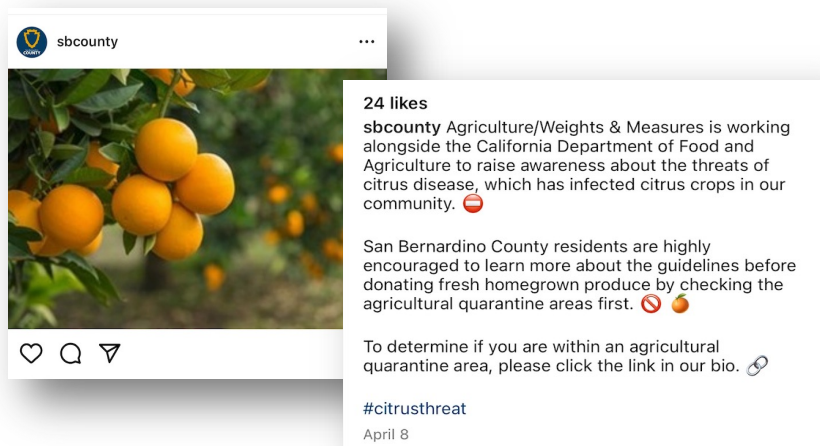
To learn more visit [CDFA.ca.gov/infocap](http://CDFA.ca.gov/infocap) or contact the CA Farm's Department of Food and Agriculture ACP program at 916 403 6846

 CDPPP

# Elected Official Outreach Activities

## Engaging with Elected Officials

- Distributed 'Guide for Donating Backyard Citrus and Fresh Produce' to local elected and appointed officials in Southern California
  - Included shareable content: blog and infographic
  - Included messaging on ACP, HLB and IFF
  - 21% open rate



### SAFELY DONATE YOUR BACKYARD CITRUS TO FOOD BANKS IN NEED OF FRESH PRODUCE

With rising food costs, food banks are struggling to meet demand, particularly for nutritious, fresh produce such as citrus, and while donations from backyard citrus trees provide a unique solution, residents are being encouraged to follow guidelines to ensure they're not donating produce that may spread harmful pests or diseases that can threaten your community's backyard fruit.

The Citrus Pest and Disease Prevention Program, administered by the California Department of Food and Agriculture, developed the following steps on how to safely donate fruit to help limit the movement of the dangerous pest called the Asian citrus psyllid (ACP), which can spread the deadly citrus tree disease, Huanglongbing (HLB), and other pests and diseases.

**Find an Organization:** There has been an increased demand for food assistance recently. Local charities and food banks most desire fresh produce during the cooler months, and your citrus can help. Reach out to your local church to find out if they are accepting food donations or visit the California Association of Food Banks' [website](#) and enter your zip code. It will provide a list of groups that will accept fruit donations. Food Forward also has [a list](#) of gleaner organizations in many areas of California. Gleaners can collect the fruit you don't need and will donate it to hunger relief efforts in the area.

**Check Local Quarantines:** HLB has been found in Los Angeles, Orange, San Bernardino, San Diego, Riverside and Ventura counties. Detections in the area have established quarantine zones that prohibit the movement of citrus, but donations can still be made if fruit is properly washed, and leaves and stems have been removed. In other areas of California, specifically in Contra Costa, Los Angeles, Riverside, Sacramento, San Bernardino, Santa Clara and Ventura counties, various [invasive fruit fly \(IFF\) detections](#) have established IFF quarantine areas that restrict any movement of fruit off the property where it's grown, and **no produce should be donated from these areas**. Click below to see active quarantine maps:

[HLB quarantine map](#) (click box titled, "Effective HLB Quarantine Boundary")

- Includes areas of Los Angeles, Orange, San Bernardino, San Diego, Riverside and Ventura counties.

[Invasive Fruit Fly quarantine maps](#)

- Includes areas of Contra Costa, Los Angeles, Riverside, Sacramento, San Bernardino, Santa Clara and Ventura counties.

**Prepare the Fruit:** If your property isn't in an active fruit fly quarantine, donated fruit should be washed thoroughly and free of leaves/stems before removing it from the property. More tips are in our fruit donation best practices [info@cpdpc.org](#). Now is an important time to come together as a community. Whether enjoying your backyard citrus at home or sharing fruit as a kind gift, we all must work together to protect our citrus, while also supporting our neighbors during times of need.

By following the steps above, Californians can safely donate fresh citrus from their backyards to local charities and community organizations in need of these items. For more information, visit [californiaCitrusThreat.org](#).

Sources:

San Diego Union-Tribune: [Hunger grows: As more San Diegans struggled to eat, donations to food nonprofits fell](#)

CITRUS PEST & DISEASE PREVENTION PROGRAM

CP-313-0224



#### Fruit Harvesting Guidance

When harvesting and donating fruit, follow this guidance to ensure harmful citrus pests and diseases such as Huanglongbing (HLB) and invasive fruit flies do not destroy your community's fruit. Quarantines have been put in place in Southern California to prohibit the movement of citrus that may contain the Asian citrus psyllid (ACP), the pest that can spread HLB, a deadly citrus disease. In other areas of California, invasive fruit fly populations have triggered additional quarantines that restrict any movement of fruit off the property where it's grown, and no produce should be donated from these areas.

#### Click below to see active quarantine maps:

[HLB quarantine map](#) (click box titled, "Effective HLB Quarantine Boundary")

- Includes areas of Los Angeles, Orange, San Bernardino, San Diego, Riverside and Ventura counties.
- [Invasive Fruit Fly quarantine maps](#)
- Includes areas of Contra Costa, Los Angeles, Riverside, Sacramento, San Bernardino, Santa Clara and Ventura counties.

#### If you are located in an invasive fruit fly quarantine:

- 🚫 Do not donate homegrown fruits and vegetables, as residents in invasive fruit fly quarantine areas are urged not to move homegrown produce from their property.

#### If you are not in an invasive fruit fly quarantine, you can safely donate citrus by taking these steps:

- 🍃 Remove all leaves, stems and branches before citrus is moved from the property.
- 🍃 Wash fruit thoroughly before moving the fruit.
- 🍃 Remove any stems, leaves or other plant debris from collection bags, clothing, tools or vehicles before leaving the property.

#### For everyone:

- 🍃 Inspect your homegrown produce and plants and report any suspected findings of pests and disease to the California Department of Food and Agriculture: 800-491-1899.

Learn more tips on preventing ACP and HLB and eradicating invasive fruit flies by visiting [CaliforniaCitrusThreat.org](#) and [CAFruitFly.com](#).

CITRUS PEST & DISEASE PREVENTION PROGRAM

CP-313-0224



# Elected Official Outreach Activities

## Upcoming Meetings and Conferences

- Southern California Association of Governments (SCAG) Annual Meeting
  - May 2-3
- California Contract Cities Association (CCCA) Municipal Seminar
  - May 16-19



**California Contract Cities Association**



# Thank You

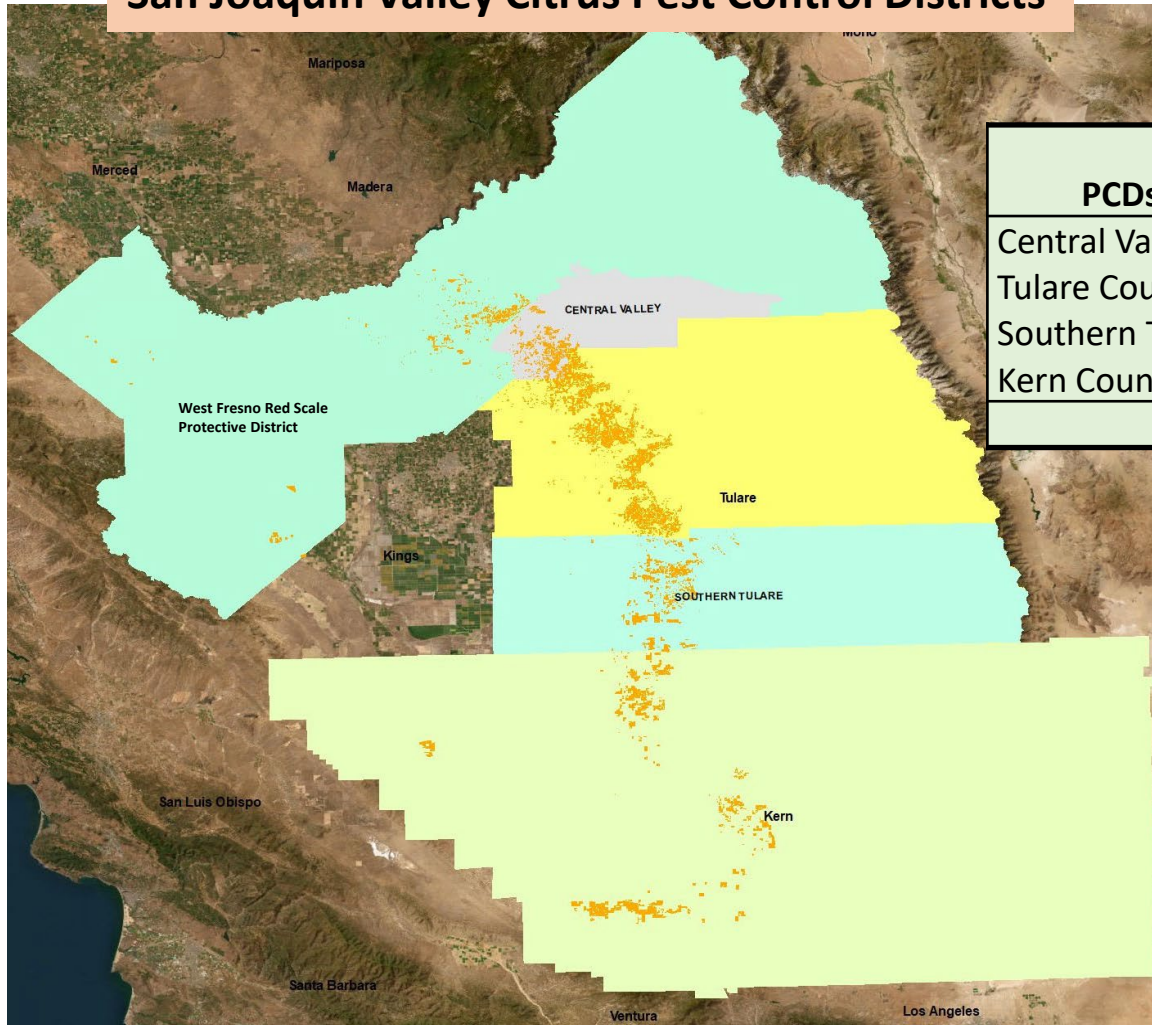


CITRUS PEST & DISEASE  
PREVENTION PROGRAM



# ACP Trapping and Multi-Pest Inspection

## San Joaquin Valley Citrus Pest Control Districts



### Trapping - Spring 2024 (24-March to 23-April)

| PCDs            | No. of Locations | Field Deployed | Lab Screened |
|-----------------|------------------|----------------|--------------|
| Central Valley  | 444              | 368            | 152          |
| Tulare County   | 947              | 1,403          | 407          |
| Southern Tulare | 470              | 586            | 278          |
| Kern County     | 1,308            | 839            | 616          |
| <b>Total</b>    | <b>3,169</b>     | <b>3,196</b>   | <b>1,453</b> |

### Multi-Pest Inspection\* Spring 2024

| # Blocks | # Trees | # Samples | # Samples Tested |
|----------|---------|-----------|------------------|
| 6        | 687     | 40        | 13               |

\*ACP, HLB, CYVCV, Fruit flies, & others



- Pest Control Business License
- QAL (Qualified Applicator License)
- Non-commercial 25+ trees