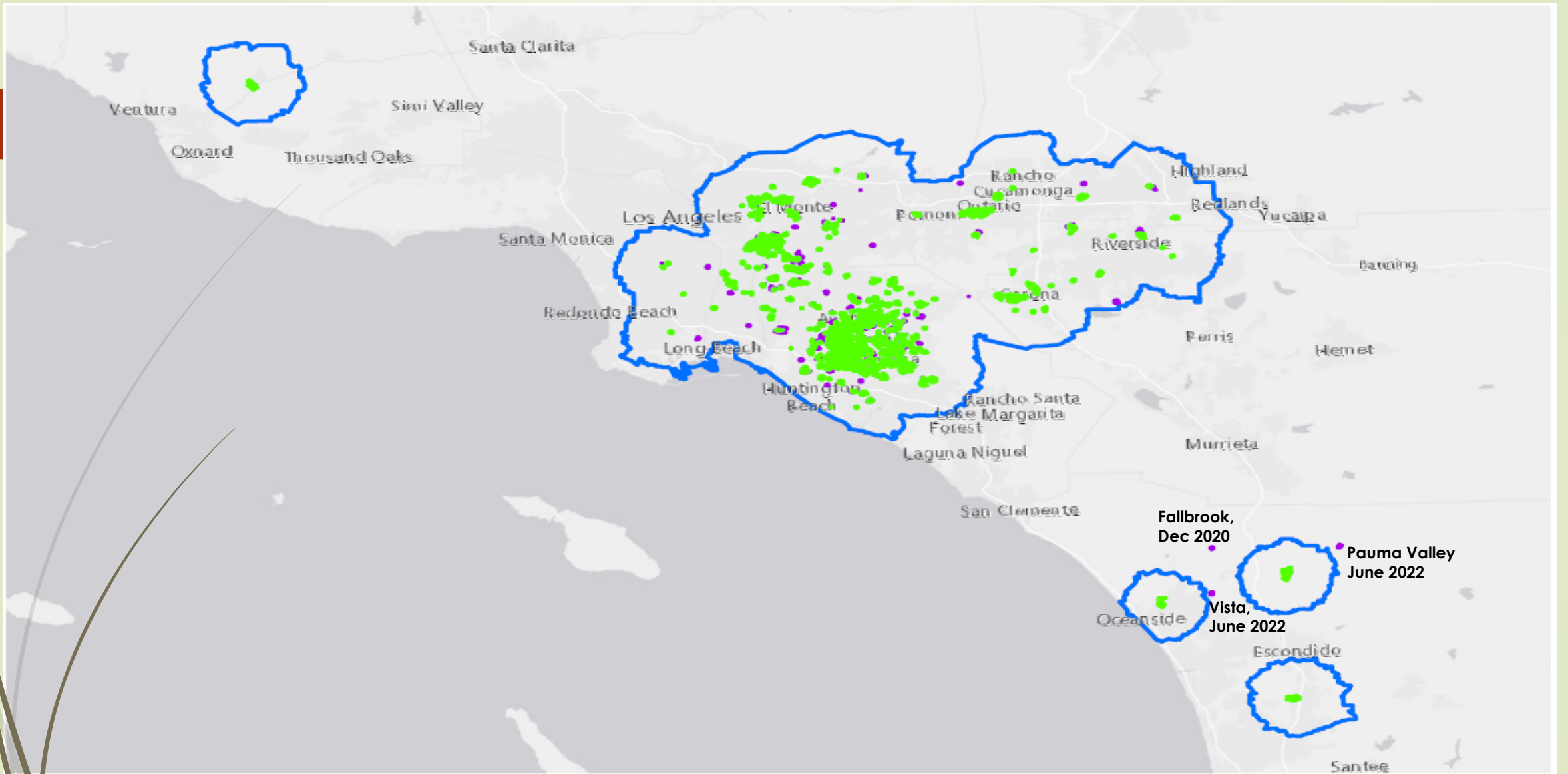




HLB Detection, Delimitation, and Tree Removal Updates


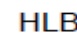


Southern District

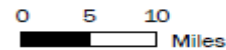
April 10, 2024



HLB Quarantine and Treatment Area

3/22/2024

-  HLB Quarantine Area
-  HLB Treatment Area
-  Mandatory
-  Non-mandatory



HLB Detection Updates

- ▶ Valley Center (VC), San Diego County.
 - ▶ Two additional positive trees were detected in March.
 - ▶ The total number of HLB positive trees detected so far in VC is 18.
 - ▶ Both infected trees were removed.
 - ▶ Eleven additional properties were added to the expanded delimitation area.
 - ▶ Majority of the properties have 25+ host trees.
 - ▶ Delimitation survey continues and is expected to complete in next two weeks.
 - ▶ There are still a few plant sample PDRs pending results.
- ▶ Multiple detections in the neighborhoods of Valley Center, Yorba Linda, Irvine, Placentia, Santa Ana, Anaheim, Costa Mesa, Orange, Azusa, Glendora, Duarte, La Puente, Jurupa Valley, Ontario, and Corona.

HLB Delimitation Survey I

Areas	Total Properties	Properties Surveyed	No Host Properties	Refusals/No Contact-Pending	Completion Percentage
Glendora (1)	40	40	29	0	100%
Azusa (1)	60	60	33	0	100%
Duarte (2,4,12-15,18,21-27,32,34,38,41-47)	211	150	42	8/53	71%
San Gabriel (1,2,9,14)	120	99	39	8/11	82%
Irvine (8-19)	1,202	646	289	0/556	54%
Yorba Linda (3-18)	1,518	977	791	0/541	64%
Placentia (15)	73	59	42	0/14	81%

HLB Delimitation Survey II

Areas	Total Properties	Properties Surveyed	No Host Properties	Refusals/No Contact-Pending	Completion Percentage
Ontario (2, 62-74)	510	261	167	4/245	51%
Valley Center (4-6)	13	8	0	0/0	62%
Riverside (11)	137	13	7	0/124	9%
Jurupa Valley (7-14)	91	30	20	1/60	33%
Corona (50-55)	623	217	121	0/406	35%

HLB Delimitation Survey (FS and Adj. LA & Orange Counties)

Areas	Properties Surveyed	No Host Properties	Refusals/No Contact-Pending
Anaheim	36	4	12
Costa Mesa	19	0	7
Santa Ana	22	4	6
Fountain Valley	2	1	2
Garden Grove	8	0	7
Midway City	4	2	2
Orange	16	4	5
Irvine	18	0	2
Yorba Linda	8	3	3
San Gabriel	9	0	0
South Gate	8	4	0
La Puente	18	4	0
Hacienda Heights	3	0	0

HLB Positive Trees (January thru March)

County	Detected	Removed	Cumulative Pending
Los Angeles	54	6	10
Orange	351	425	287
San Bernardino	21	33	13
Riverside	39	51	16
San Diego	3	3	0
TOTAL	468	518	326



California Department of Food & Agriculture Plant Pest Diagnostics Center HLB Testing Program 2024

Total number of plant and ACP samples per month – Fig. 1a, Fig1b
Number of samples tested for HLB per year from 2008 –2023 – Fig. 2
Tally of positive detections by county and city – Tables 1-3
Number of detections from 2012-2024 for each county – Fig. 3
If you have any questions, please call or email me at 916-738-6710 lucita.kumagai@cdfa.ca.gov.

Fig 1a. 2024 -
Total number of plant and ACP samples submitted per month.

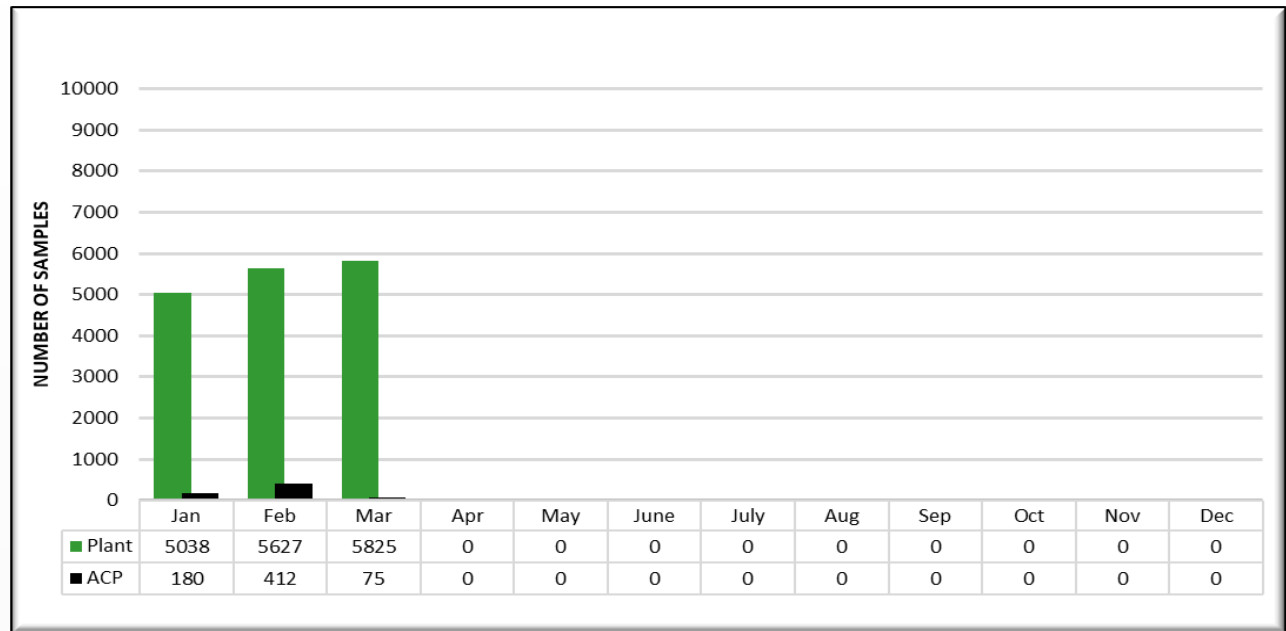


Fig 1b. 2023 -
Total number of plant and ACP samples submitted per month last year.

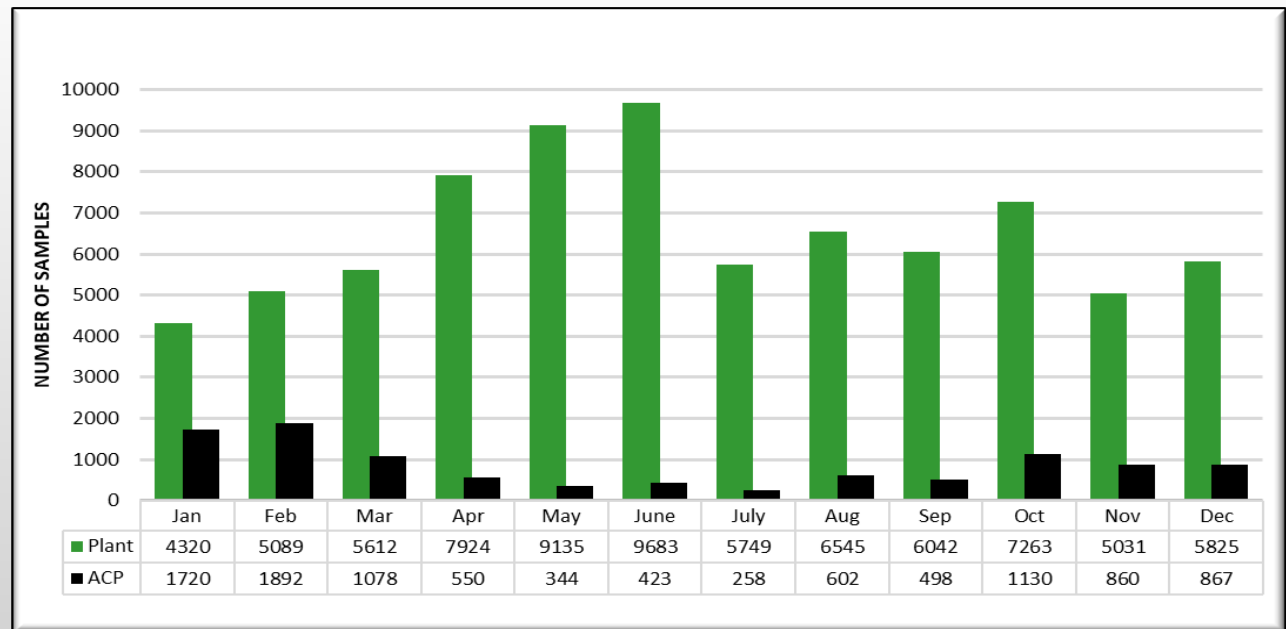
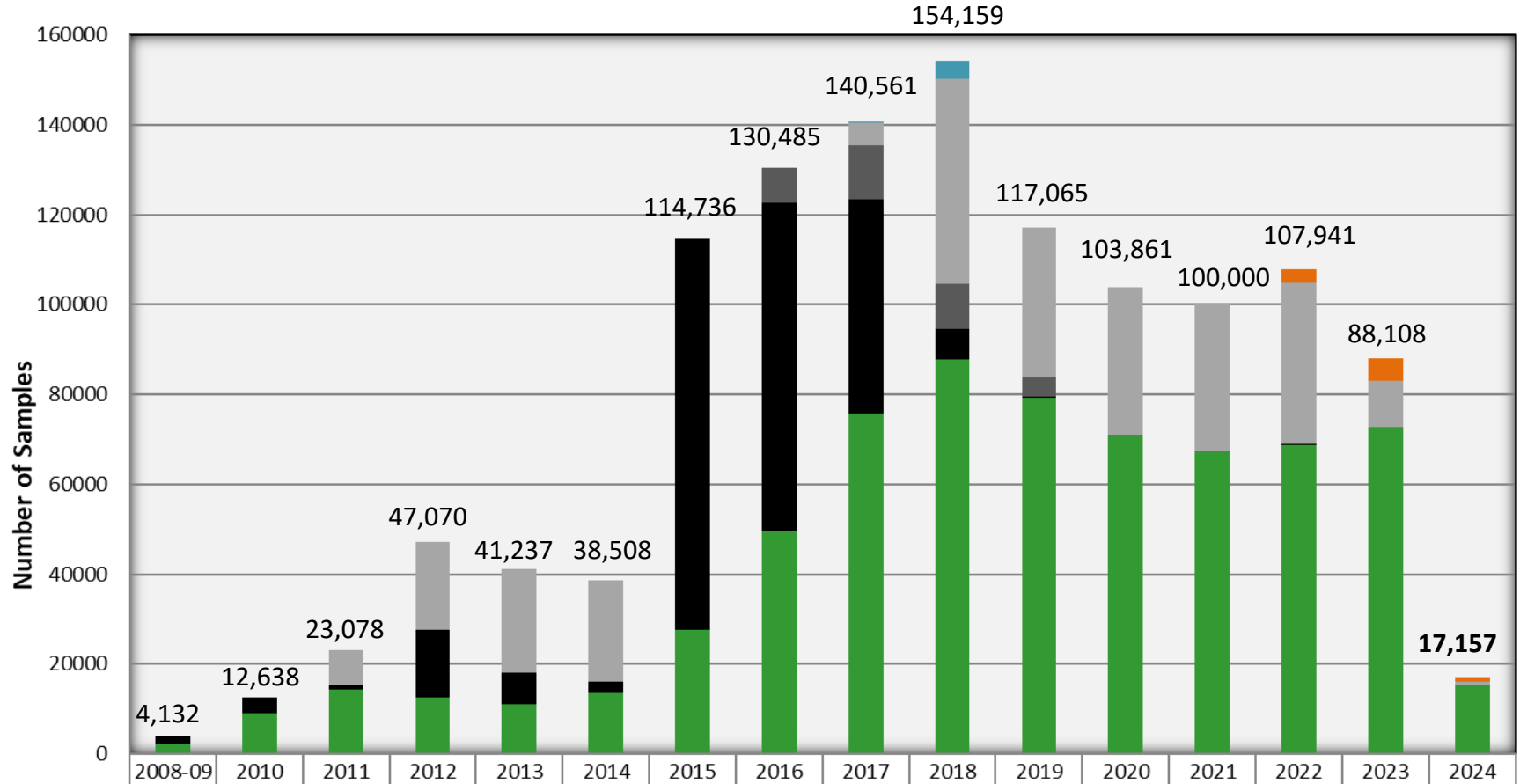


Fig 2. Number of samples tested for HLB per year from 2008 – 2024.



	2008-09	2010	2011	2012	2013	2014	2015	2016	2017	2018	2019	2020	2021	2022	2023	2024
CRB Plant														3122	5065	1164
CPDP ACP									94	4020	0	0	0	0	0	0
CRB ACP			7740	19380	23222	22568	0	0	5085	45550	33247	32920	32507	35948	10222	658
U AZ ACP								7881	11896	10079	4310	205	0	0	0	0
CDFA ACP	1923	3527	1105	15032	6872	2300	87052	72832	47619	6698	133	130	29	163	39	9
CDFA Plant	2209	9111	14233	12658	11143	13640	27684	49772	75867	87812	79375	70606	67464	68708	72782	15326

Combined total of plant and ACP samples tested from 2008 – 2024 is 1,240,736

HLB Positive Detections			
City	# Sites	# Trees	# ACP samples
Orange County			
Garden Grove	710	1194	122
Santa Ana	691	1101	95
Anaheim	890	1500	162
Westminster	370	627	22
Orange	305	437	42
Tustin	52	64	10
Fountain Valley	15	22	3
Huntington Beach	27	30	2
Placentia	89	123	15
La Habra	5	6	1
Fullerton	17	22	8
Yorba Linda	34	33	7
Irvine	71	97	3
Costa Mesa	41	60	3
Brea	6	8	0
Buena Park	9	16	2
Cypress	5	1	5
Stanton	5	6	1
Midway City	8	15	0
Los Alamitos	1	0	1
Total	3351	5362	504
Los Angeles County			
Whittier	205	251	45
Pico Rivera	177	246	64
Montebello	80	111	2
San Gabriel	87	118	7
Rosemead	50	69	7
Paramount	29	35	5
La Mirada	53	72	6
La Puente	42	47	9
Norwalk	15	12	5
Cerritos	7	9	5
Hacienda Heights	5	5	1
Lakewood	5	6	0
Duarte	107	159	3
El Monte	74	106	8
South El Monte	23	43	4
Alhambra	3	4	0
Temple City	12	11	2
Compton	1	1	0
Glendora	1	0	1
South Gate	10	10	6
Long Beach	8	8	3
Los Angeles	7	6	1
Downey	28	35	5
Carson	4	3	1
Monrovia	20	28	0
Rowland Heights	2	0	2
Pomona	10	13	2
Artesia	7	8	0
Bellflower	5	5	0
Monterey Park	1	1	0
West Covina	1	0	1
City of Industry	1	2	0
Claremont	1	0	1
Santa Fe Springs	2	1	1
Azusa	7	15	2
Covina	1	0	1
Total	1091	1440	200
Riverside County			
Corona	139	192	28
Riverside	27	29	5
Eastvale	2	2	0
Jurupa Valley	29	47	4
Moreno Valley	1	1	0
Norco	2	4	0
Total	200	275	37
San Bernardino County			
Rancho Cucamonga	3	7	2
Montclair	8	7	1
Colton	6	11	3
San Bernardino	2	1	1
Ontario	192	318	21
Fontana	30	41	9
Chino	18	28	2
Total	259	413	39
San Diego			
Fallbrook	1	0	1
Oceanside	4	9	4
Pauma Valley	1	0	1
Vista	1	0	1
San Diego	26	42	0
Valley Center	4	18	2
Total	37	69	9
Ventura			
Santa Paula	45	70	5
Total	45	70	5
Grand Total	4983	7629	794

Table 1. Tally of positive sites, positive trees, and CLas+ ACP samples.

3/29/2024

Table 2. Percent positives per county

County	Sites	Trees	ACP
Orange	67.2%	70.28%	63.5%
LA	21.9%	18.88%	25.2%
Riverside	4.0%	3.60%	4.7%
San Bernardino	5.2%	5.41%	4.9%
San Diego	0.7%	0.90%	1.1%
Ventura	0.9%	0.92%	0.6%
Total	100%	100%	100%

Table 3. Tally of positive samples from Risk-based and HLB Response surveys.

Sample type	Trees	ACP
Risk-based Survey	496	7%
HLB Response	7133	93%
Total	7629	100%

Fig 3. Number of positive detections from 2012 – 2024 for each county

County	2012		2015		2016		2017		2018		2019		2020		2021		2022		2023		3/29/2024		Total	
	Plant	ACP	Plant	ACP	Plant	ACP	Plant	ACP	Plant	ACP	Plant	ACP	Plant	ACP	Plant	ACP	Plant	ACP	Plant	ACP	Plant	ACP	Plant	ACP
Orange	-	-	-	-	-	-	147	66	553	69	585	55	407	24	434	38	849	47	2031	197	356	8	5362	504
Los Angeles	1	1	10	3	19	3	119	47	146	12	150	9	56	10	60	7	314	89	507	12	58	7	1440	200
San Bernardino	-	-	-	-	-	-	-	-	0	1	2	2	13	7	75	10	91	14	211	5	21	0	413	39
Riverside	-	-	-	-	-	-	3	3	0	0	19	9	12	2	20	0	88	14	92	8	41	1	275	37
San Diego	-	-	-	-	-	-	-	-	-	-	-	-	0	1	9	4	0	2	57	2	3	0	69	9
Ventura	-	-	-	-	-	-	-	-	-	-	-	-	-	-	-	-	-	-	67	5	3	0	70	5
TOTAL	1	1	10	3	19	3	269	116	699	82	756	75	488	44	598	59	1342	166	2965	229	482	16	7629	794

County Monthly Activity Report
October 2023 - Jan 2024

County	FY 2023-24 Budget Amount	Percent Expended	CA's Issued	Grower Inspections	Transporter Inspections	Packer/Processor Inspections	Fruit Seller Inspections	Harvester/FLC Inspections	Regulatory Incidents	NOVs Issued	NOPAs
Fresno (*4)	\$105,077.25	0%	0	0	0	0	0	0	0	0	0
Imperial	\$57,684.66	51%	6	14	12	2	0	0	0	0	0
Kern (*1)	\$80,000.00	17%	49	4	118	4	0	1	0	0	0
Kings	\$19,602.20	27%	0	0	0	28	0	0	0	0	0
Los Angeles	\$291,633.41	30%	2	18	0	0	127	0	0	0	0
Monterey	\$15,760.55	20%	2	6	0	0	0	0	0	0	0
Orange (*3)	\$88,048.50	2%	0	6	0	0	0	0	0	0	0
Riverside	\$751,593.75	32%	3	41	254	2	3	0	0	5	0
San Bernardino	\$18,674.83	2%	0	1	0	0	0	0	0	0	0
San Diego	\$612,471.94	37%	4	59	51	28	43	0	0	9	0
San Luis Obispo	\$8,676.04	60%	3	0	0	0	0	0	0	0	0
Santa Barbara	\$12,785.73	64%	3	0	1	0	3	0	0	0	0
Tulare	\$410,044.56	43%	126	0	1,264	6	7	0	2	27	2
Ventura (*4)	\$284,784.70	0%	0	0	0	0	0	0	0	0	0
Total	\$ 2,756,838.12	29%	198	149	1,700	70	183	1	2	41	2

(*#) = number of invoices missing from reporting period



HLB Treatment Updates

Southern District

April 10, 2024



Treatment Updates

- Delimitation treatments were conducted in the following areas:
 - Glendora, Azusa, Duarte, Corona, Ontario, Irvine, Costa Mesa, Brea, Yorba Linda, Orange, Garden Grove, Fountain Valley, Midway City, Santa Ana, Anaheim, Westminster, San Gabriel, El Monte, and Paramount.
- Public meetings:
 - To treat delimitation areas in Riverside and San Bernardino Counties: Jan 30, Feb 27, and Mar 19, 2024.
 - To treat delimitation areas in Los Angeles and Orange Counties: Jan 9, Feb 7, Mar 7, and April 3, 2024.

HLB Delimitation Treatments

Areas	Total Properties	Properties Treated	No Host Properties	Refusals/ No Contact	Completion
Glendora (1)	229	93	131	2/3	100%
Azusa (1)	99	27	68	0/2	100%
Corona (50)	107	59	40	5/3	100%
Ontario (1,3,7,8,10,12,61-63)	327	149	135	11/32	90%
Duarte (2,4-5,8,12-13, 15,17,35,38,44-45)	416	232	144	19/9	97%
Brea (2-3)	283	123	136	14/3	98%
Yorba Linda (5)	97	62	28	7/1	100%
Costa Mesa (8-13)	492	199	256	26/11	98%
Irvine (14-16)	264	143	100	11/10	96%

HLB Delimitation Treatments – Find Sites and Adj. in Orange County

Areas	Total Properties	Properties Treated	No Host Properties	Refusals/ No Contact
Placentia	2	0	2	0/0
Fountain Valley	6	2	4	0/0
Westminster	53	16	13	2/22
Midway City	43	26	10	1/6
Orange	176	81	80	10/1
Yorba Linda	210	67	139	2/2
Huntington Beach	8	3	5	0/0
Brea	11	7	3	1/0
Garden Grove	551	366	135	18/35
Anaheim	310	135	164	5/6

HLB Delimitation Treatments – Find Sites and Adj. in LA County

Areas	Total Properties	Properties Treated	No Host Properties	Refusals/ No Contact
San Gabriel	45	28	15	1/1
El Monte	6	1	3	1/1
Whittier	6	1	5	0/0
South Gate	20	12	7	0/1
Paramount	28	15	10	3/0

Southern District Staffing Updates

County	Permanent	Seasonal	Pending Hiring	Hiring Status
Los Angeles	27	4	-	-
Orange	14	0	Two PPA I and One PPA III	Interviews pending.
Riverside and San Bernardino	16	6	One PPA III	PPA III- Interview pending. An ES will begin effective April 16.
San Diego and Imperial	17	0	One PPA I	One PPA I advertised, awaiting applications.

Staff Distribution By Activities

Counties	Delimitation and other Surveys	Treatments and Tree Removals	Regulatory
Los Angeles and Orange	25	17	3
Riverside and San Bernardino	3	6	3
San Diego and Imperial	8	6	2



**Central District Update
Operations Subcommittee Meeting
April 10, 2024**

Central District Update

- No new ACP detections in the Central Valley.
- Detection, delimitation, and grove trapping remains status-quo.
- Multi-pest risk survey was completed.
- Citrus commodity surveys are on-going.
- CYVCV in the cities of Tulare and Visalia is on-going.
- Citrus staff continue to assist PD/EP staff on the Oriental fruit fly eradication project in San Bernardino.



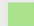
Central District Update

- There have been no new HLB+ trees reported since February 9.
- There's a total of 70 HLB+ trees.
- 58 of the 70 HLB+ trees have been removed.
- There are 45 total refusal properties (a combination of survey, treatment, and tree removal).



HLB+ Delimitation Area
Santa Paula, Ventura County

 Delimitation Area

 Commercial Citrus

0 200 400
Meters



Central District Update - Projects

Office	Survey	Trapping	Treatment
Fresno	6	6	0
Visalia	4	3	0
Shafter	6	2	0
Camarillo	5	0	3



Central District Update - Staffing

County	Total Perm Staff (current)	Pending Hiring (vacancies)	Hiring Status
Fresno County (Fresno)	12	1 APCS	New APCS starts May 1.
Kern County (Shafter)	8	1 PPA I	PPA I in process
Tulare County (Visalia)	8	1 ES 1 PPA I	New ES starts May 1. PPA I in process
Tulare County (Visalia Regulatory)	1	--	--
Ventura County (Camarillo)	9	3 PPA I	PPA I in process.

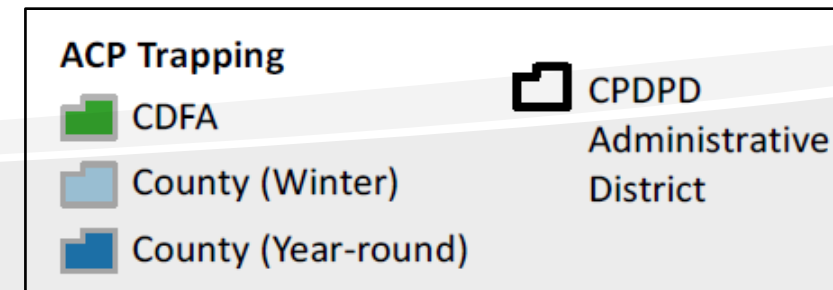
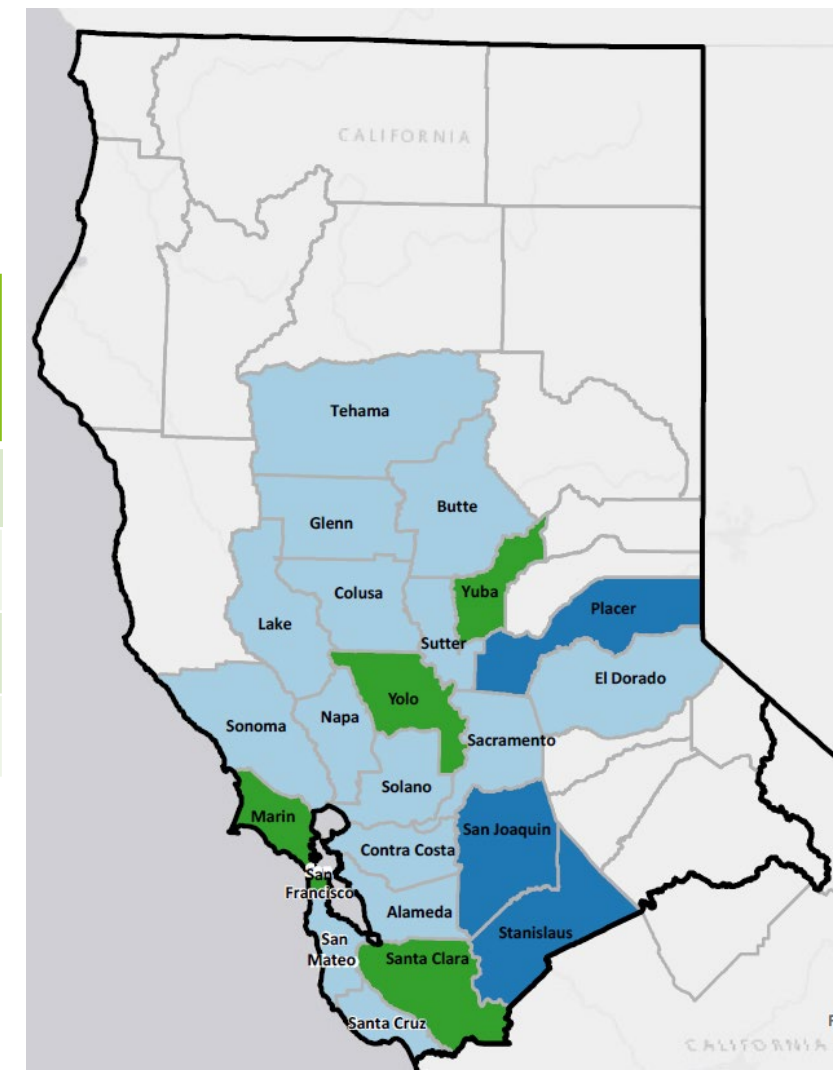


**Northern District Update
Operations Subcommittee Meeting
April 10, 2024**

Northern District Update | ACP Trapping

General Detection

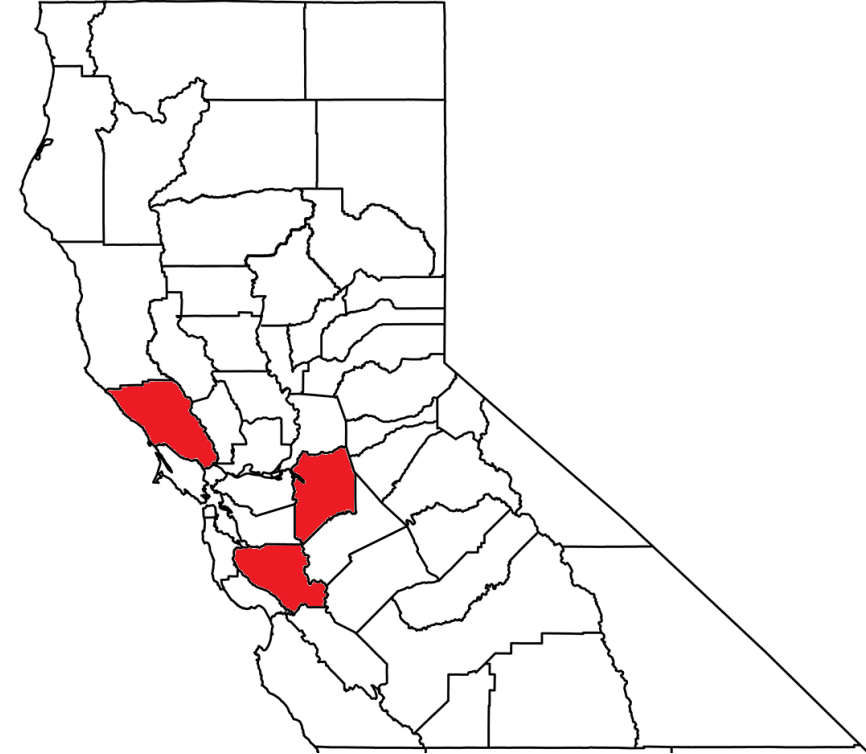
Entity	Type	Number of Counties	Number of Traps
County	Commercial	3	139
County	Residential (YR)	3	1350
County	Residential (W)	14	5473
State (CDFA)	Residential (W)	5	1358



Northern District Update | ACP Trapping

Delimitation & Treatment

- San Joaquin County
 - No detections in delimitation area for 1 year
 - 43 delimitation traps have been converted to winter traps
- Sonoma County
 - No detections in delimitation area for 1 year
 - 55 delimitation traps have been converted to winter traps
- Santa Clara County – 720 delimitation traps
 - 35 new detections since October 11, 2023
 - 11 new detections since last Operations Subcommittee meeting
 - Spot treatment anticipated between May-June



Northern District Update | Staffing

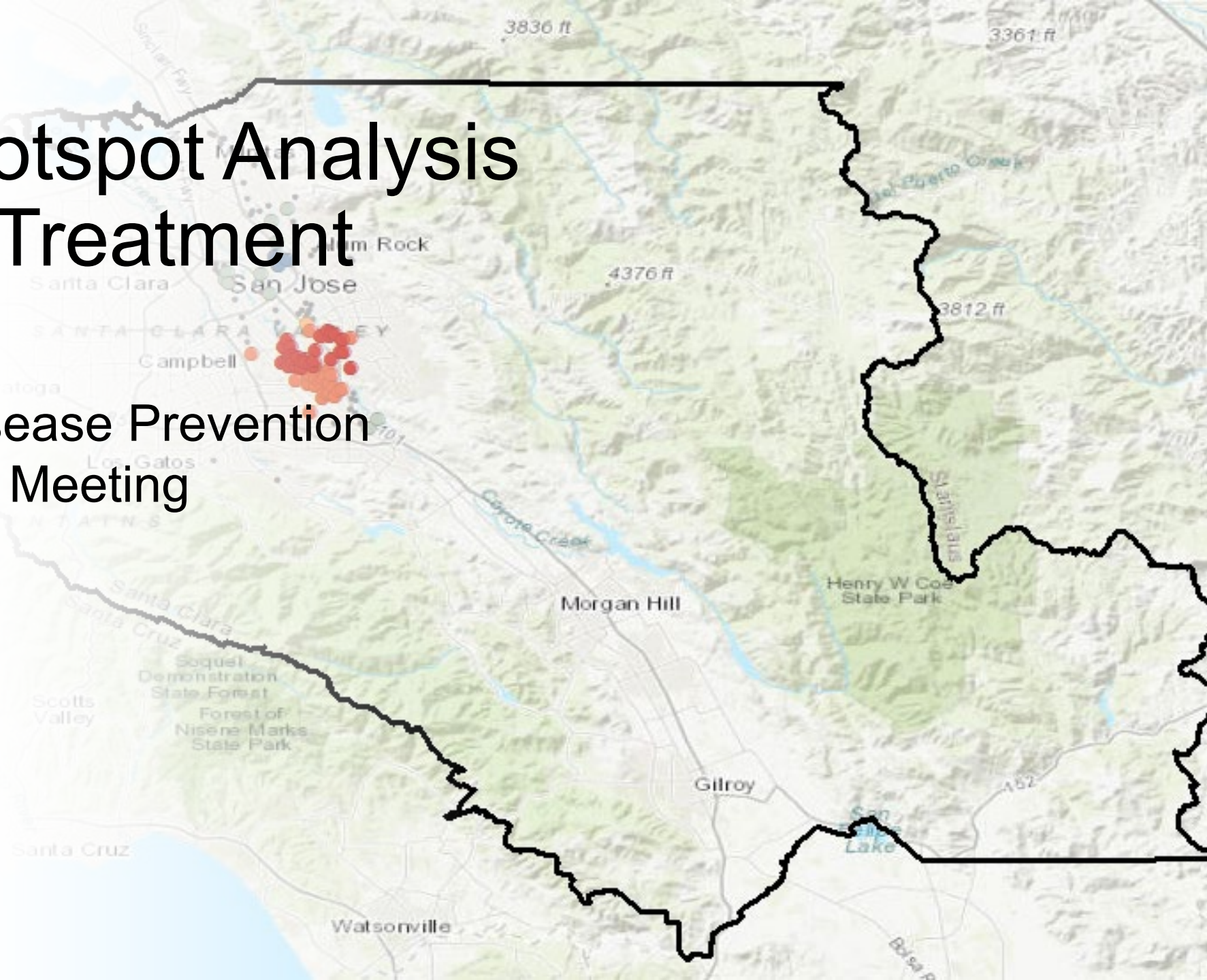
Classification	Total Perm Staff (current)	Pending Hiring (vacancies)	Hiring Status
Senior Environmental Scientist (Supervisory)	3	0	
Senior Environmental Scientist (Specialist)	2	0	
Environmental Scientist	8	2	Hiring anticipated May/June
Research Data Specialist I	1	0	
APC Supervisor	1	0	
APC Specialist	1	1	Hiring anticipated May/June
Pest Prevention Assistant II	5	0	
Pest Prevention Assistant I	3	0	

Santa Clara Hotspot Analysis and Spot Treatment

Citrus Pest and Disease Prevention
Committee Meeting

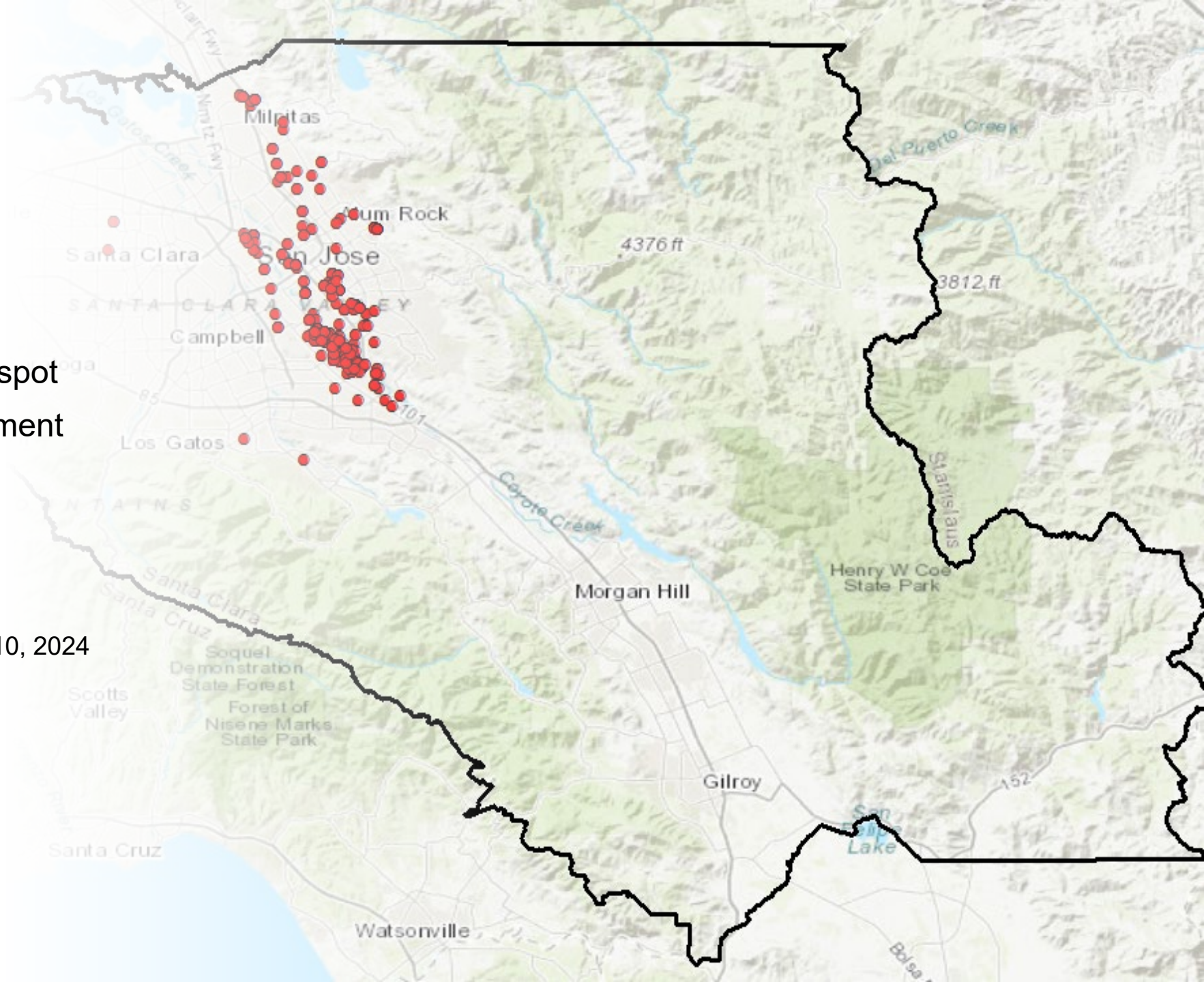
April 10, 2024

Ravneet Behla,
Program Supervisor
Northern District, CPDPD



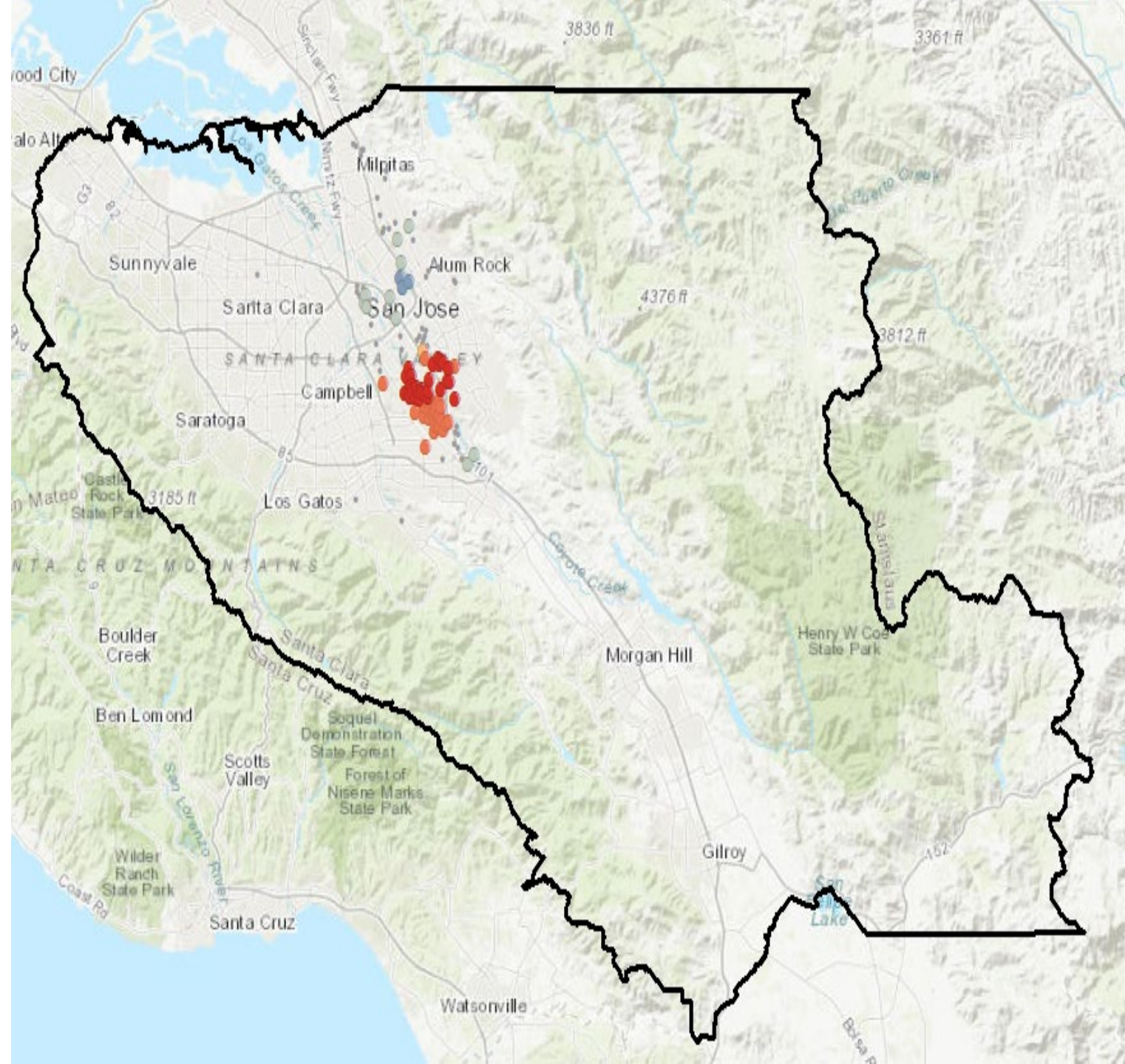
Background

- Statistically significant hotspot
- Recommended spot treatment
 - Repeat find sites
- Maximum 180 properties
 - Budget: ~\$ 7,000
- Motion Approved
 - Ops Committee – January 10, 2024
 - CPDPC – February 21, 204
- Coordinating with County



Sites

- 2024 –will be included in PEP (14 Sites)
- 2022-2023 – 70 properties
 - Visual Survey – April – May 2024
 - Find sites will be included in PEP
- Spot Treatment
 - May – June 2024



- Questions?
- Thank You!

