

New World Screwworm (NWS):

Industry Briefing

June 11, 2026

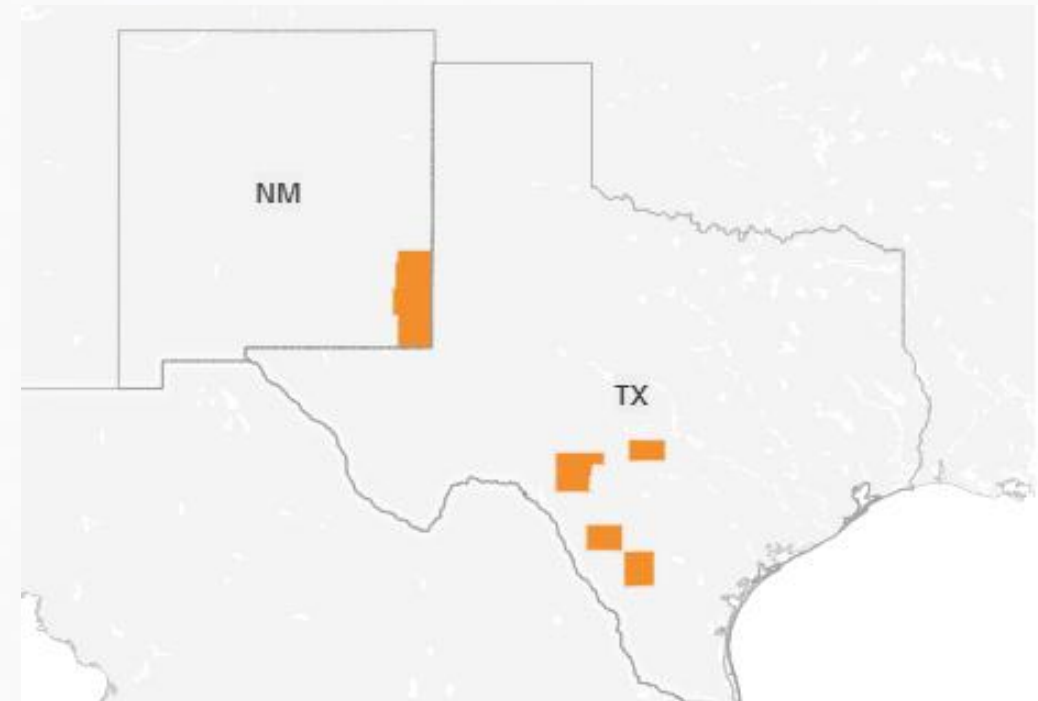


Dr. Mandy Murray, DVM, MPVM, PhD
Acting State Veterinarian & Animal Health Branch Chief



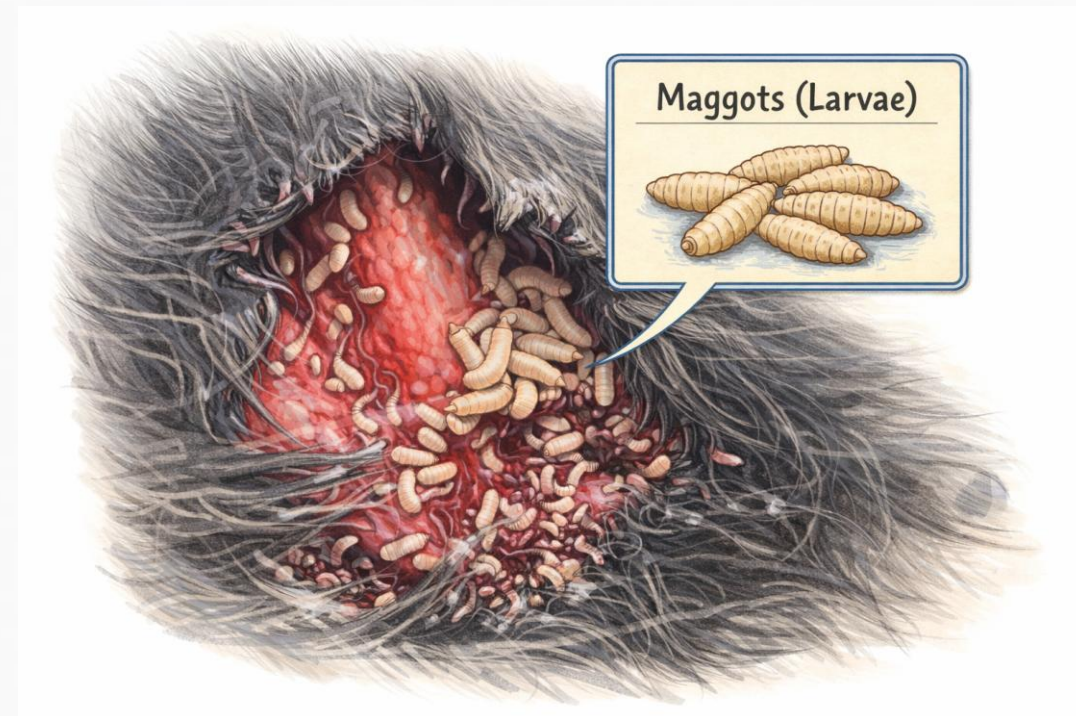
Bottom Line

1. New World Screwworm has **not** been detected in California
2. Confirmed US Detections
 - Texas: 6
 - New Mexico: 1
3. Animal movement risk increased
4. CDFA has been preparing and is in strong readiness to respond

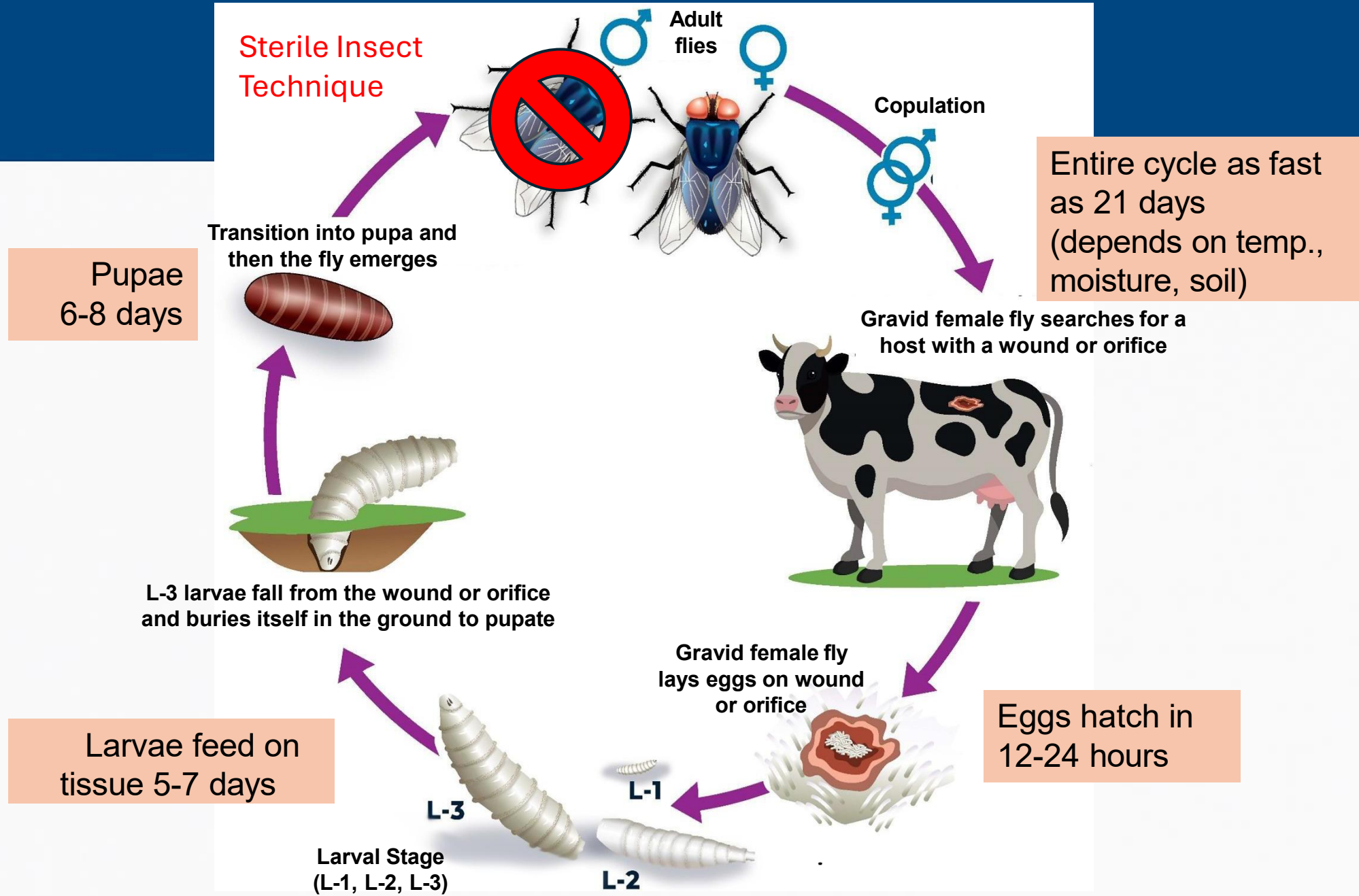


What is New World Screwworm?

- A fly that lays eggs in **wounds or body openings**.
- Eggs hatch into larvae that **burrow into living tissue**.
- Mainly affects **livestock**.
- Rarely affects **people**: can be serious if left untreated.



NWS Life Cycle



WHAT NWS IS NOT



NOT
A FOOD SAFETY
THREAT



Milk, meat, and other
food products remain
safe.



NOT
SPREAD ANIMAL-
TO-ANIMAL



Infestation occurs through
adult flies laying eggs in
wounds.



NOT
A HUMAN PANDEMIC
THREAT



Human cases are rare
and do not spread
person-to-person.



FOCUSED ON **PREVENTION. DETECTION. RESPONSE.**

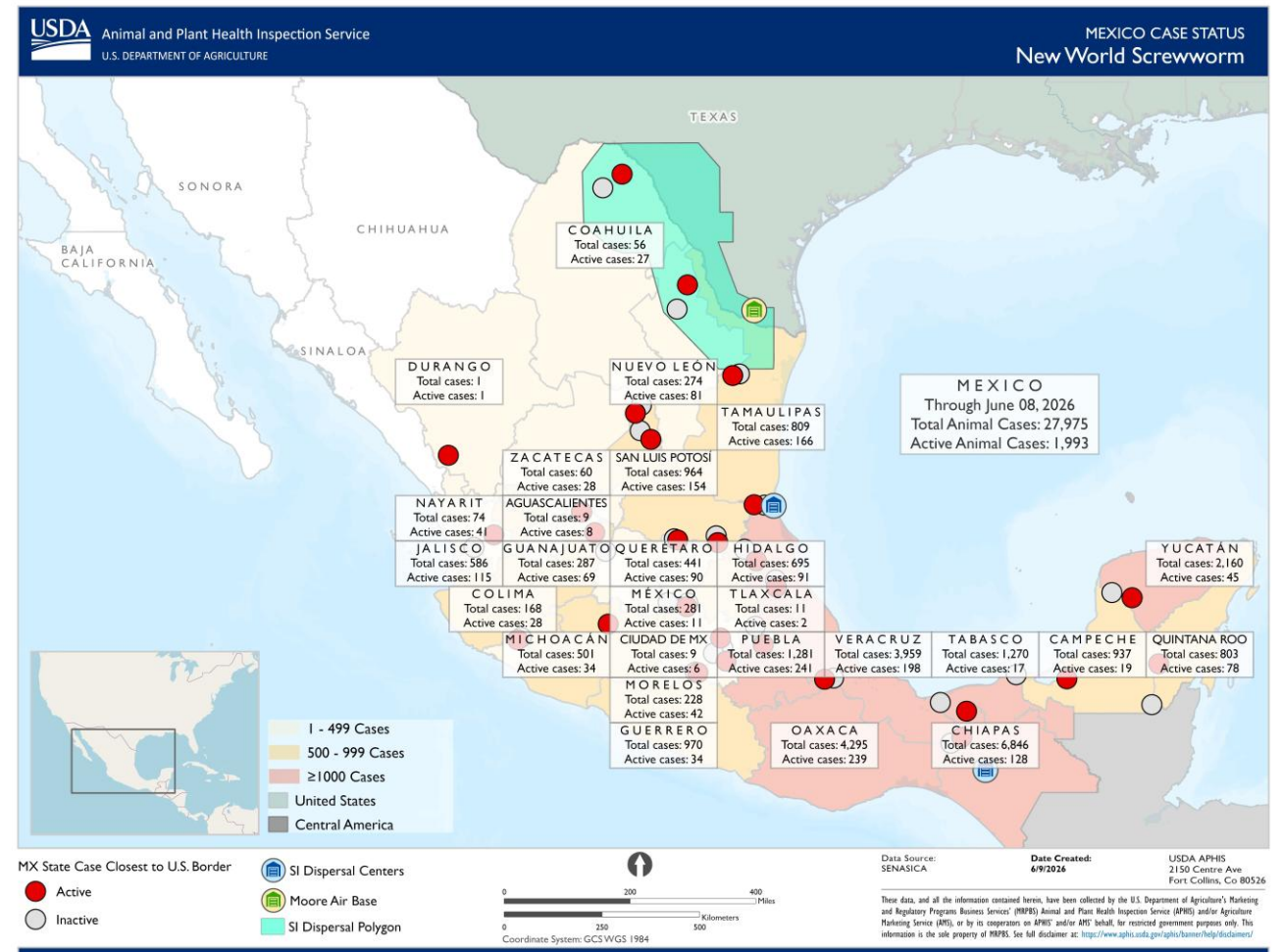
Historical

- Last large NWS outbreak in the US was in the 1960's
- Eradicated from North and Central America through the release of sterile flies
- Broke through Darien Gap and moving north since early 2020's



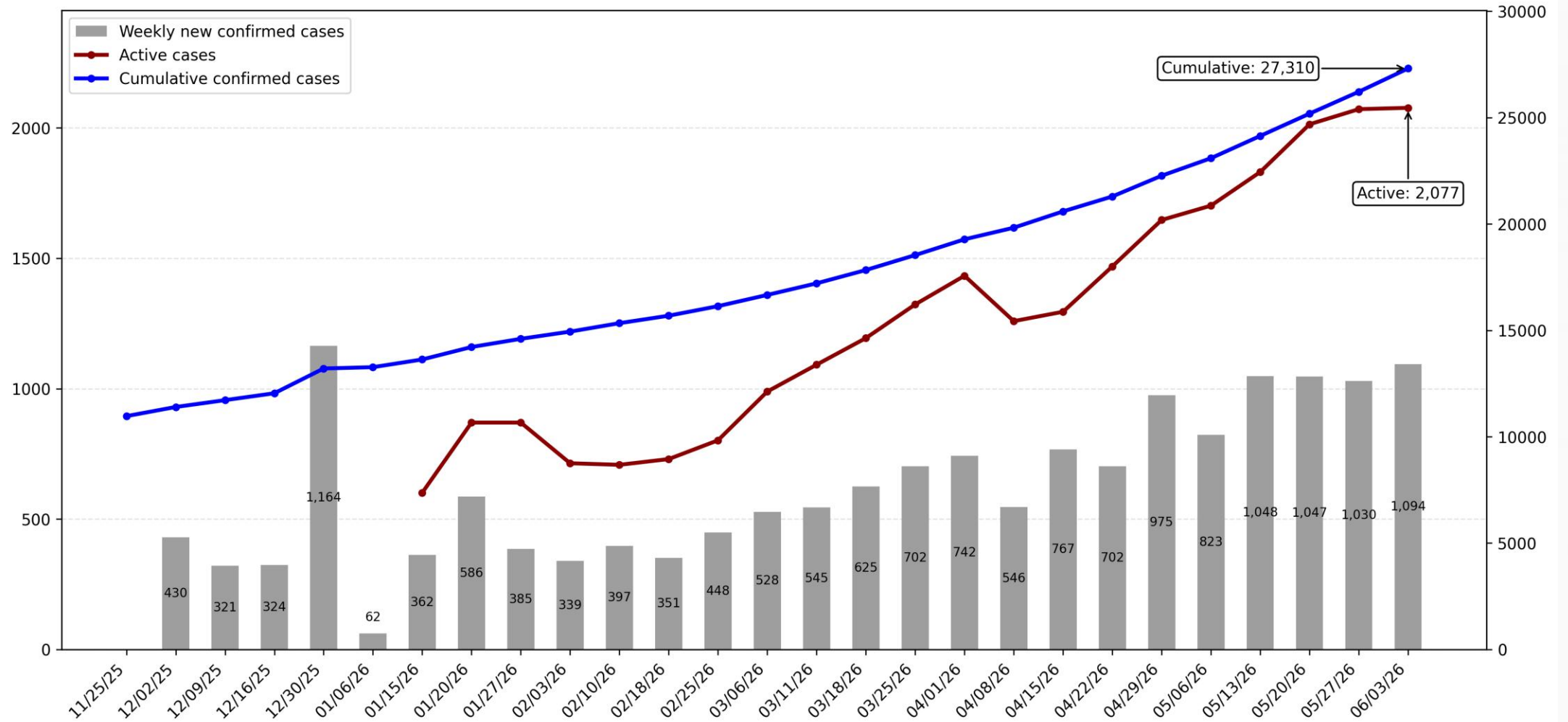
Current Situation - Mexico

- Ongoing outbreak in Central America + Mexico
- Mexican Border States (active cases)
 - Coahuila: (27)
 - Nuevo Leon: (81)
 - Tamaulipas: (166)
- Current sterile fly release 'polygon' extends north into Texas



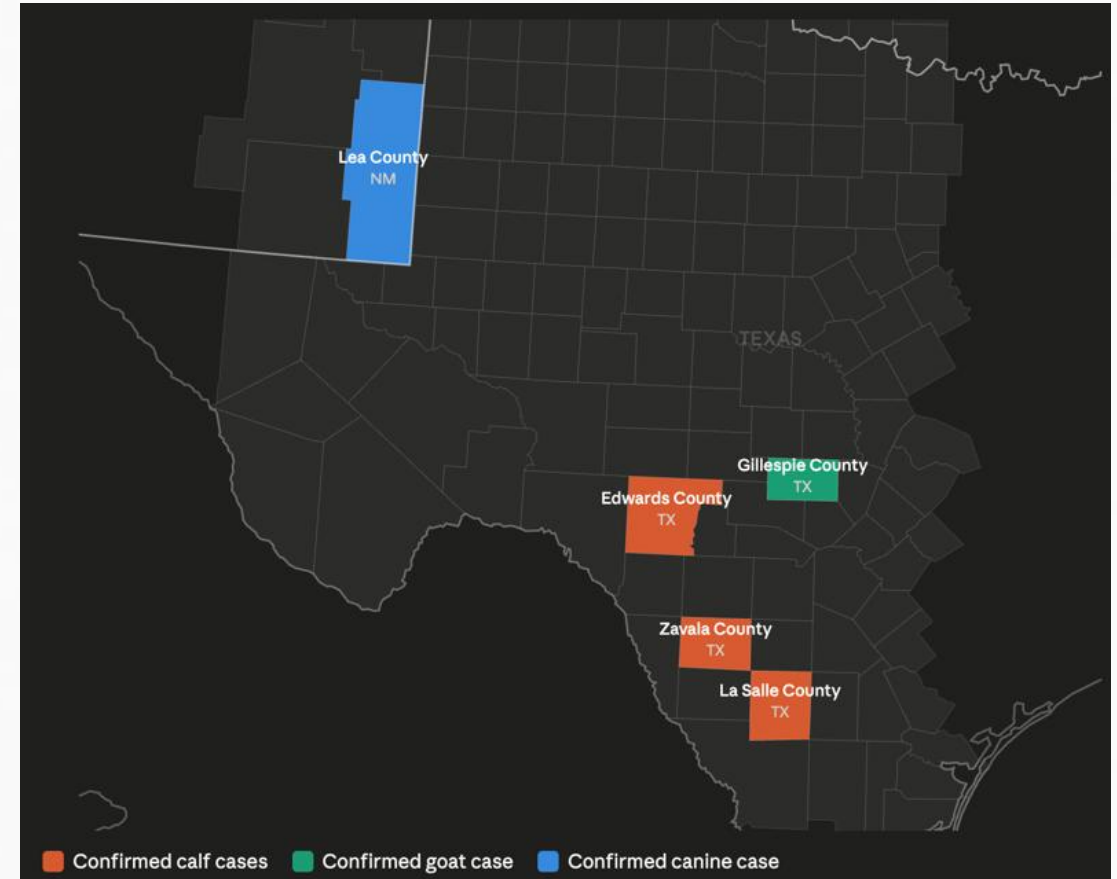
Current Situation -Mexico

Mexico New World Screwworm - Weekly New, Active and Cumulative Cases



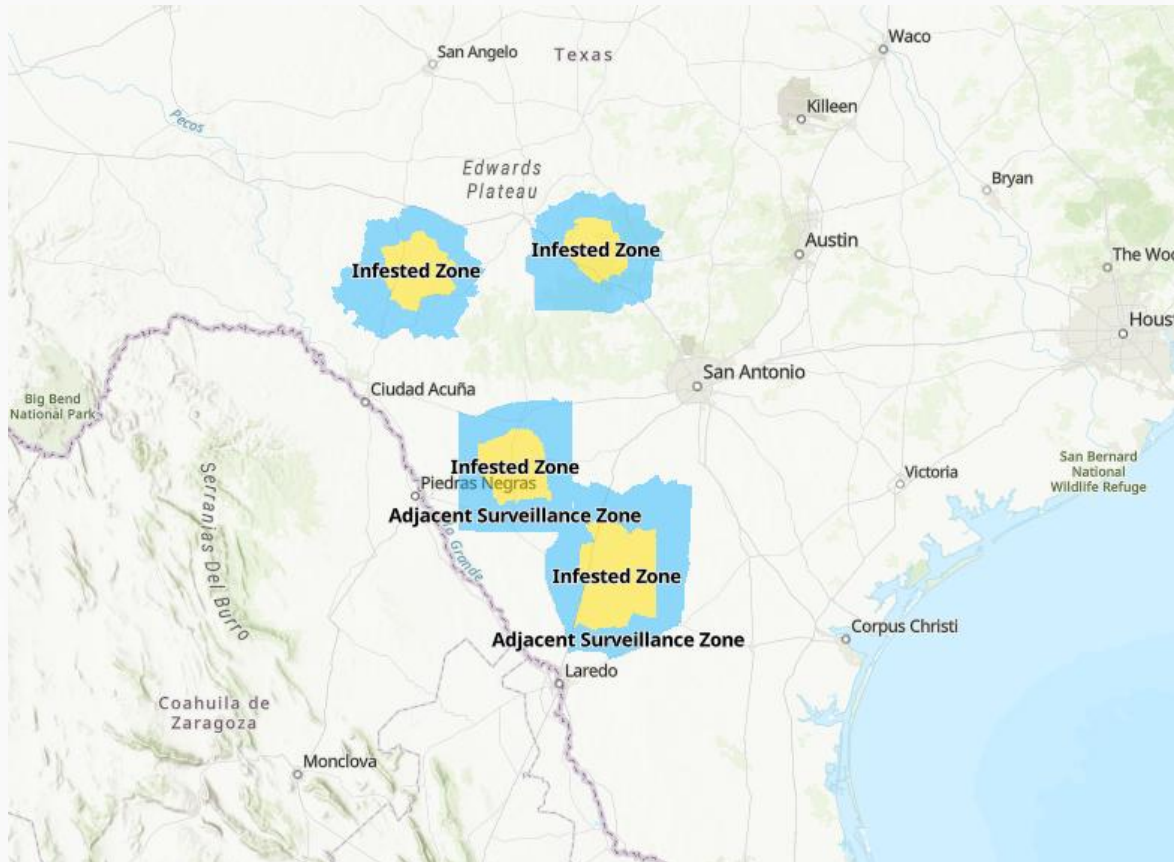
U.S Situation Update

1. U.S. Confirmed Detections: 7
2. Confirmed detections in Texas:
 - Edwards County: 1 calf
 - Gillespie County: 1 goat
 - La Salle County: 2 calves
 - Zavala County: 2 calves
3. Confirmed detection in New Mexico
 - Lea County: 1 canine

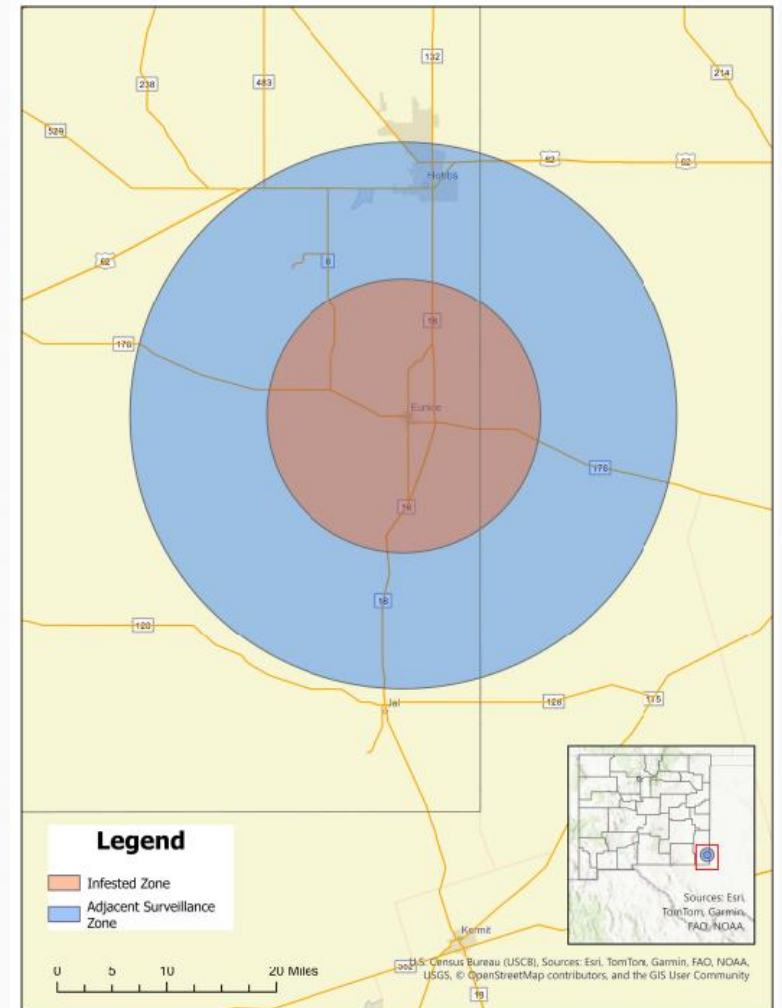


U.S Situation Update

Texas Infestation Zones:



New Mexico Infestation Zones:



National Response

- **Sterile insect** fly release activated
- Wildlife surveillance underway
- Community **outreach** operations ongoing
- USDA APHIS coordinating with Texas Animal Health Commission & New Mexico Department of Agriculture



CALIFORNIA PREPAREDNESS

Surveillance Active Since October 2025

SURVEILLANCE



2,254+

Flies Tested
at NVSL



0

Positive Detections
for NWS



SURVEILLANCE ROUNDS COMPLETED

52

Imperial County

26

San Diego County

READINESS



350+

Outreach Events
Statewide



23+

Sectors Engaged
Across California



2

Multi-State Exercises
With USDA & Border States



CALIFORNIA DEPARTMENT OF
FOOD & AGRICULTURE

NWS RISK TO CALIFORNIA

ISOLATED CASE



- ✓ Limited to one animal and one location
- ✓ Lower risk of further spread
- ✓ Rapid detection and response can stop it

VS.

ESTABLISHED POPULATION



Greater Concerns

- ✓ Ongoing infestation
- ✓ Broader impact to more animal species
- ✓ Wildlife
- ✓ Companion animals (pets and feral)
- ✓ Unhoused human populations

FLIES HAVE LOCAL RISK



Flies travel short distances and pose a local risk. They do not naturally spread long distances.



ANIMAL MOVEMENT SPREADS RISK



Animals can carry NWS long distances. Movement of infested animals is the greatest risk for spreading NWS geographically.

CALIFORNIA RISK ASSESSMENT

CALIFORNIA INFESTATION



LOW

No detections in California

ANIMAL MOVEMENT



ELEVATED

Increased risk from affected areas

PUBLIC HEALTH



LOW

Human risk remains low

FOOD SUPPLY



NO IMPACT

No impact to food supply

OPERATIONAL READINESS



STRONG READINESS

CDFA is prepared and ready to respond

WHAT WE ARE WATCHING FOR

1. TEXAS & NEW MEXICO SITUATION



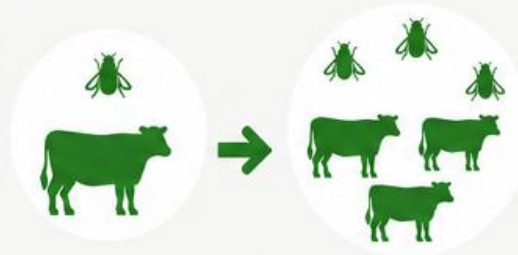
Monitoring the current NWS cases in Texas and New Mexico and the response efforts underway.



We are watching:

- Continued control and containment efforts
- Any new detections in the area

2. NEW CASES THAT WOULD CHANGE THE SITUATION



New cases in Texas or New Mexico that would change the situation from **isolated cases** to **established population**.



We are watching:

- Additional NWS detections in Texas or New Mexico
- Evidence of sustained transmission or spread

3. MOVEMENT OF CASES IN MX AND OTHER INCURSIONS INTO THE US



Tracking NWS cases in Mexico—especially moving up the West Coast—and any additional incursions into the U.S. (NM & TX).



We are watching:

- Spread of NWS northward in Mexico, especially along the West Coast
- New incursions into the U.S. beyond current areas (NM & TX)

New NWS Entry Requirements

Effective June 12, 2026, at 9:00 a.m. Pacific Time, the California Department of Food and Agriculture (CDFA) is implementing additional New World Screwworm (NWS) entry requirements for animals entering California from NWS-affected areas.

These requirements apply to livestock, poultry, camelids, equids, captive cervids, and companion animals, including dogs, cats, rabbits, pet psittacines, and domestic rodents.

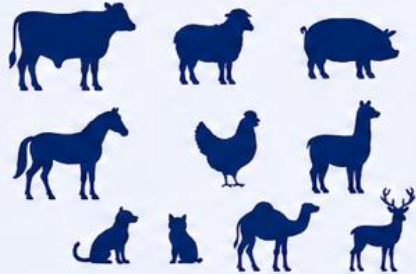
Animals known or reasonably suspected to be infested with NWS may not enter California unless specifically authorized by CDFA.

California Preparedness

Do These Requirements Apply to Me?

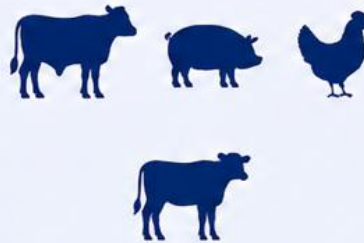
NWS movement requirements depend on where your animals originate.

From an NWS Infested Zone



- Livestock
- Dairy calves
- Equine
- Poultry
- Companion animals
- Camelids
- Captive cervids

From an NWS Surveillance Zone



- Livestock
- Poultry
- Dairy calves

From a State with an Infested Zone



- Equine
- Dogs
- Cats

From States with no Active Infested Zones



- Existing California movement requirements apply



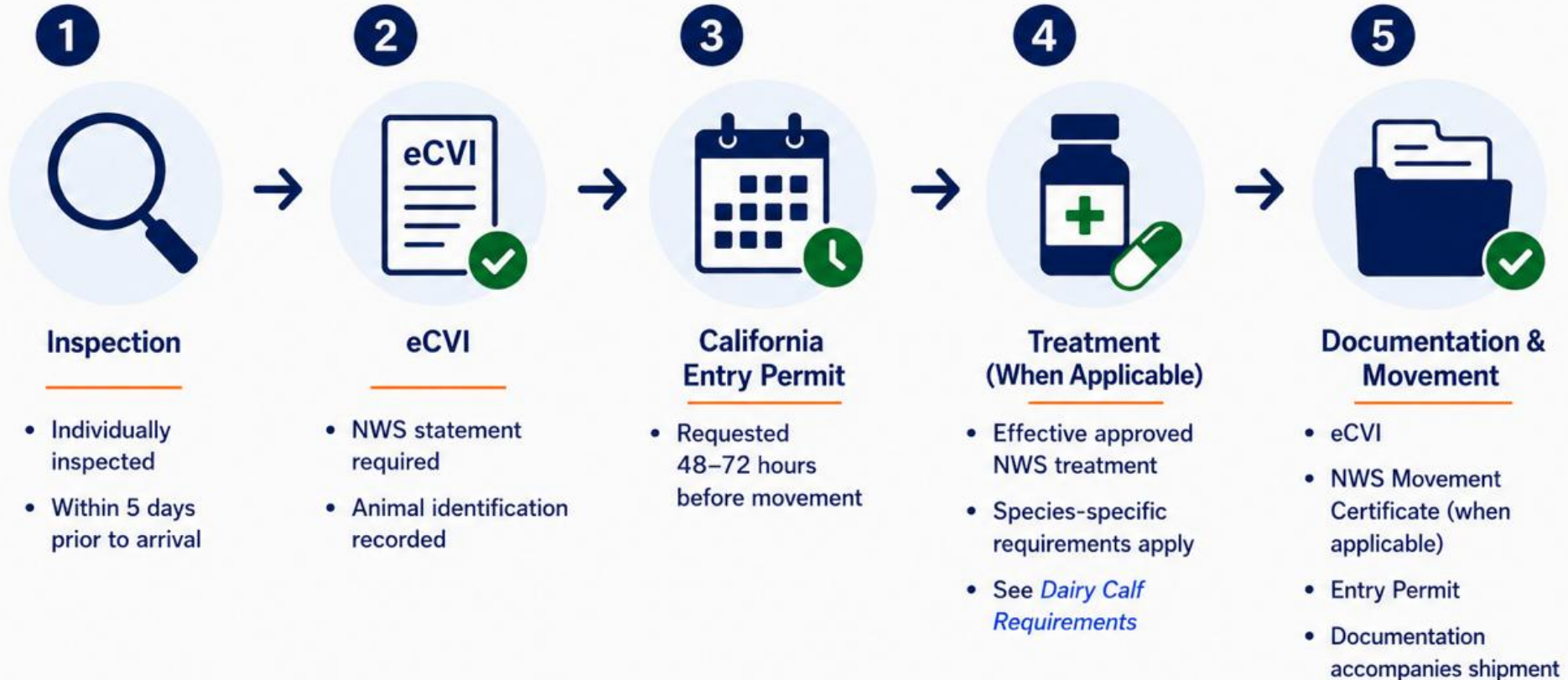
Requirements are based on where animals originate. Existing federal and California entry requirements apply in addition to origin state requirements.



Any animal known or suspected to be infested shall not enter California.

Movement from an NWS Infested Zone

Follow these steps for all warm blooded animals from an Infested Zone



Dairy calves up to 6 months of age originating from an NWS Infested Zone or NWS Surveillance Zone are subject to these requirements.



Treatment timing

Treatment must be completed within 14 days of arrival.

Movement from an NWS Surveillance Zone

Follow these steps for livestock, poultry and dairy calves.



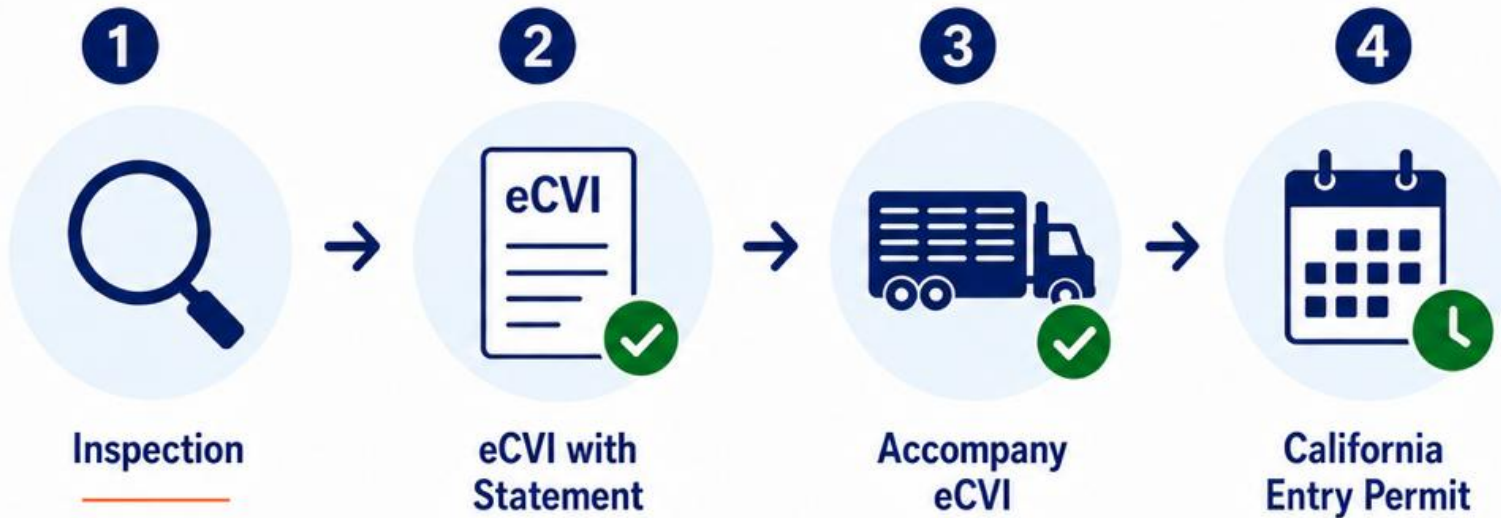
Lower Risk Movement

- Applies to livestock, poultry and dairy calves
- No routine treatment requirement
- Dairy calf requirements still apply

Movement from a State with an Infested Zone

EQUINES AND COMPANION ANIMALS ORIGINATING FROM A STATE WITH AN ACTIVE NWS INFESTED ZONE

Equines and companion animals originating from a state with an active NWS infested zone shall:



Be individually inspected by a USDA-accredited veterinarian within seven (7) days prior to arrival.

Be accompanied by an eCVI containing the statement:

"All animals were inspected and found free of evidence of New World Screwworm infestation."

Be accompanied by the eCVI while entering California.

Obtain a California Entry Permit. Submit a permit request with all required documents not less than forty-eight (48) hours and preferably at least seventy-two (72) hours prior to movement.



Active NWS Infested Zone

These requirements apply to equines and companion animals originating from a state with an active NWS infested zone.

Special Requirements for Dairy Calves

Additional safeguards are required for dairy calves due to increased risk associated with healing navels and wounds.



Inspection

Individually inspected within 5 days prior to movement.



Treatment

Treated with an approved systemic product.



Navel Care

Navel must be treated if calf is less than 3 weeks of age.



Permit & eCVI

California Entry Permit and eCVI required before movement.



These additional requirements help reduce the risk of New World Screwworm introduction.



Dairy calves up to 6 months of age originating from an NWS Infested Zone or NWS Surveillance Zone are subject to these requirements.

Exemptions & Special Situations

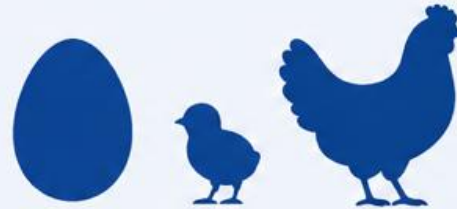
The following exemptions and special situations apply. All other requirements still apply unless noted.

Direct to Slaughter Livestock



- Treatment not required
- Inspection required
- eCVI required
- Must move directly to slaughter
- Slaughter within 72 hours of inspection

Poultry Exemptions



- Hatching eggs are exempt
- Chicks less than 5 days of age are exempt
- Must move under National Poultry Improvement Plan (NPIP) documentation (VS Form 9-3)

Small Mammals



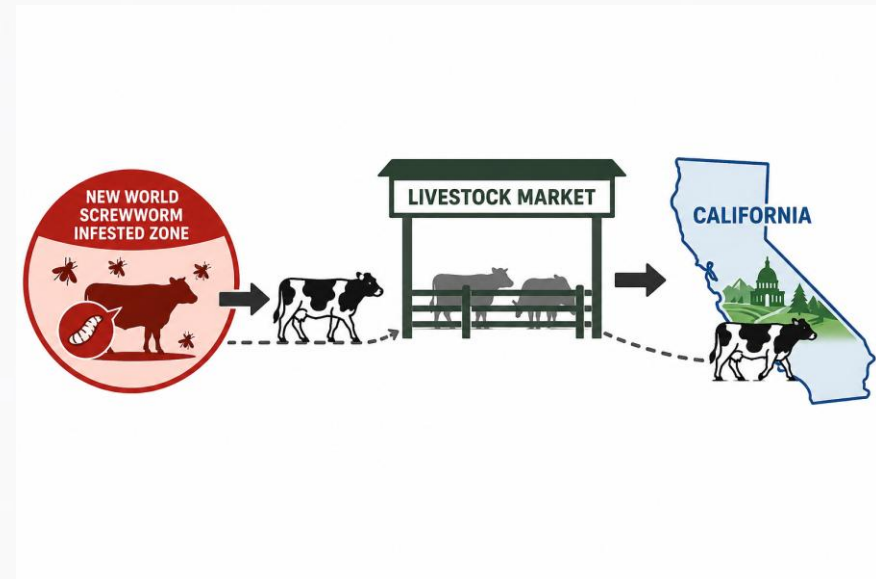
- Indoor-raised small mammals (e.g., rabbits, rodents) are exempt from systemic treatment
- Inspection, certification, and permit requirements still apply

Scenario 1: Interstate Movement of 12-month-old feeder cattle coming from Infested Zone via out-of-state market to California

Interstate Movement Requirements

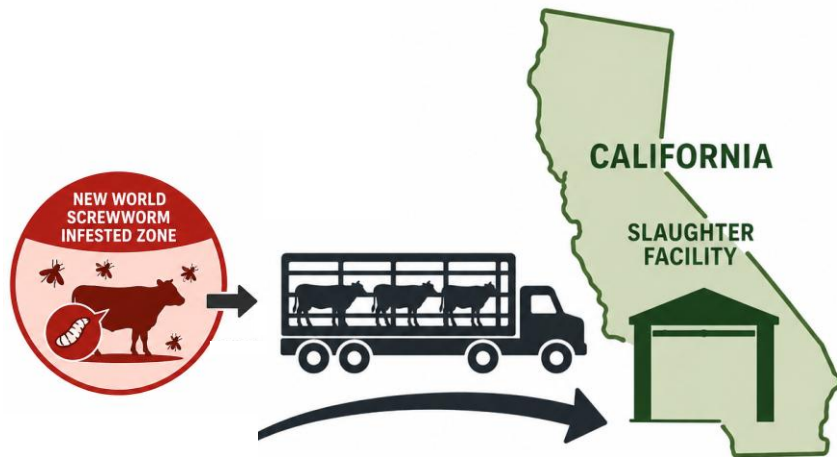


Inspection before travel	✓	Within 5 days
CVI requirements	✓	Electronic Certificate of Veterinary Inspection (eCVI) with NWS statement; official ID, NPIN, treatment info; an NWS Animal Movement Certificate, when required by the state of origin or federal animal health officials
Treatment	✓	Within 14 days of arrival
CA entry permit	✓	Requested at least 48 hours prior to movement
Inspection upon arrival	✓	
Standard interstate movement requirements also apply	✓	



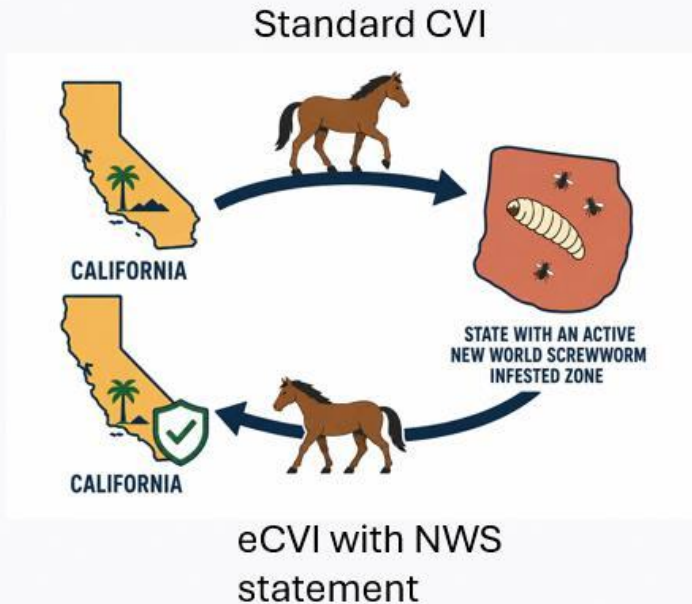
Scenario 2: Livestock interstate movement from infested zone direct to slaughter

Interstate Livestock Movement



Inspection before travel	✓	Slaughter within 3 days of original inspection - no diversions allowed
CVI requirements	✓	Electronic Certificate of Veterinary Inspection (eCVI) within 3 days; an NWS Animal Movement Certificate, when required by the state of origin or federal animal health officials; official ID, NPIN
Treatment	✗	
CA entry permit	✓	Requested at least 48 hours prior to movement
Inspection upon arrival	✓	Standard antemortem inspection at slaughter facility
Standard interstate movement requirements also apply	✓	

Scenario 3: Horse going to exhibition in state with an active Infested Zone (visiting outside the Infested Zone) and returning to California



Interstate Livestock Movement



Inspection before travel	✓	If in a state with an infested zone for more than 24 hours – inspection in state with an infested zone within 7 days of entry into CA
CVI requirements	✓	Electronic Certificate of Veterinary Inspection (eCVI) required with NWS statement if in state with an infested zone for more than 24 hours; no Extended ECVIs from GVL
Treatment	✗	
CA entry permit	✓	Requested at least 48 hours prior to movement
Inspection upon arrival	✓	
Standard interstate movement requirements also apply	✓	

Scenario 4: Intrastate Movement of Livestock from hypothetical California infested zone to slaughter via market



Intrastate Movement Requirements



Inspection before travel	✓	Must slaughter within 3 days of original inspection - no diversions allowed
CVI requirements	✗	No CVI, but must have NWS Animal Movement Certificate; NPIN; Official ID
Treatment	✗	
Permit	✓	To leave infested zone
Inspection upon arrival	✓	Standard antemortem inspection at slaughter facility

Scenario 5: Intrastate Movement of Livestock from hypothetical California infested zone to market to feedlot



Intrastate Livestock Movement



Inspection before travel	✓	Within 5 days
CVI requirements	✗	No CVI, but do need NWS Animal Movement Certificate; NPIN; Official ID
Treatment	✓	Within 14 days
Permit	✓	To leave infested zone
Inspection upon arrival	✓	

Scenario 6: International Import of Dogs and Cats from Mexico to California



International Movement Requirements



Inspection before travel	✓	Within 5 days of entry
CVI requirements	✓	Certificate of Veterinary Inspection (CVI) with NWS statement
Treatment	✓	Highly Recommended
CA entry permit	✓	Within 5 days of entry
Inspection upon arrival	✓	
Standard international movement requirements apply	✓	From USDA and CDC

If New World Screwworm Is Detected in California

Initial Response: First 24 Hours



California Containment & Eradication Strategy

Coordinated actions to prevent establishment and eliminate New World Screwworm



MOVEMENT CONTROLS



Quarantine affected premises



Managed movement permitting



Livestock market agreements



Additional premises quarantined as needed



SURVEILLANCE



Animal inspections



Trace investigations



Trap deployment and servicing



Ongoing surveillance within response zones



COORDINATION



Unified Incident Management Team



Coordination with USDA APHIS



Cal OES coordination



Local Agricultural Commissioner engagement



Industry partner collaboration



ERADICATION



Treatment of infested animals



Disposal and biosecurity measures

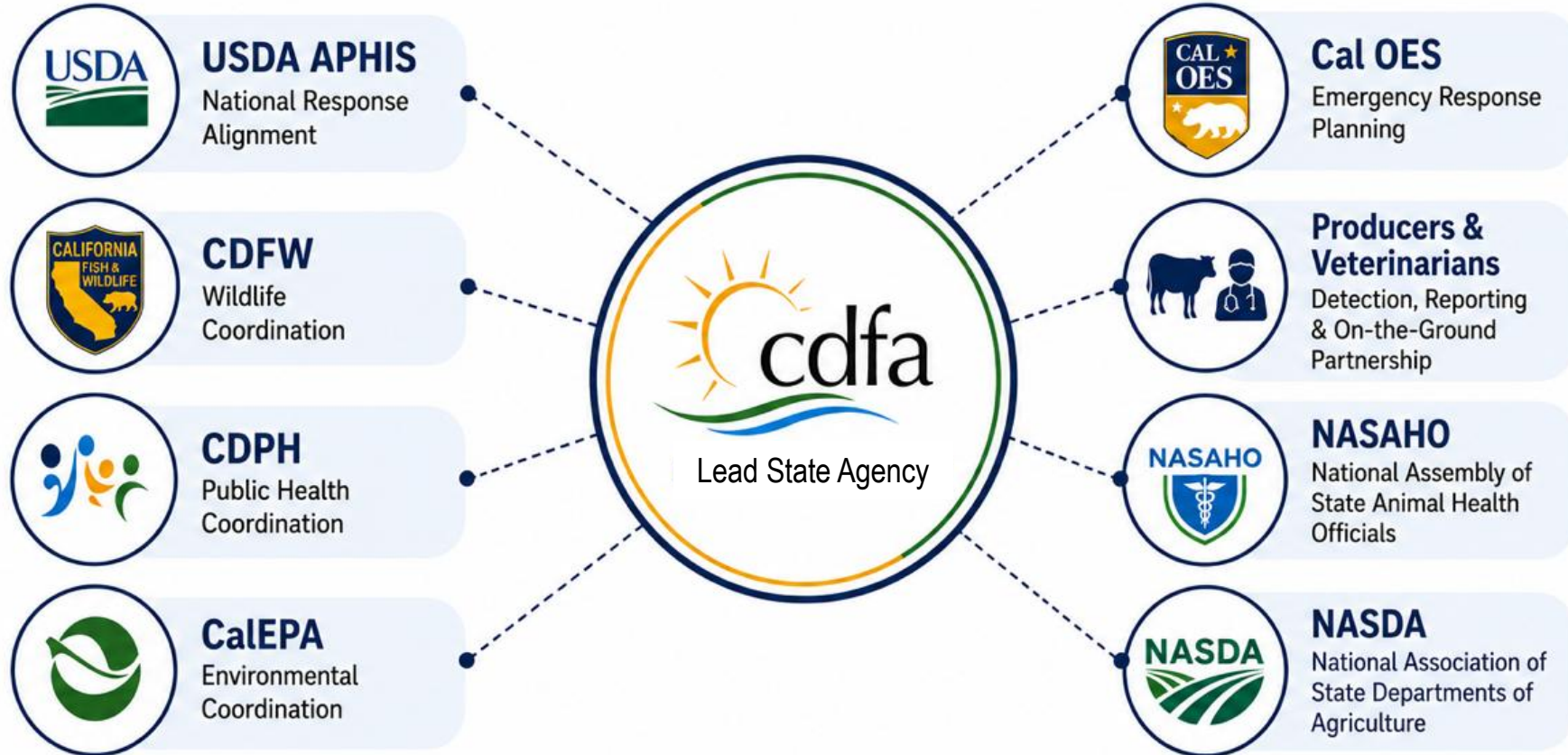


Sterile fly release



Continued monitoring until eradication achieved

CDFA's ONE TEAM APPROACH



How to Stay Informed

1. CDFA NWS Alert Box

https://www.cdfa.ca.gov/AHFSS/Animal_Health/screwworm/

2. Sign up to receive Animal Disease SMS Text Alerts

3. State websites for Infestation Zones

1. Texas:

<https://www.tahc.texas.gov/emergency/nws.html>

2. New Mexico:

<https://screwwormnm.org/>



SMS text alert



Recap

1. New World Screwworm has **not** been detected in California
2. Confirmed US Detections
 - Texas: 6
 - New Mexico: 1
3. Animal movement risk increased
4. CDFA has been preparing and is in strong readiness to respond



CDFA Screwworm Site



Requirements taken from the USDA Disposal and
Disinfection Procedures



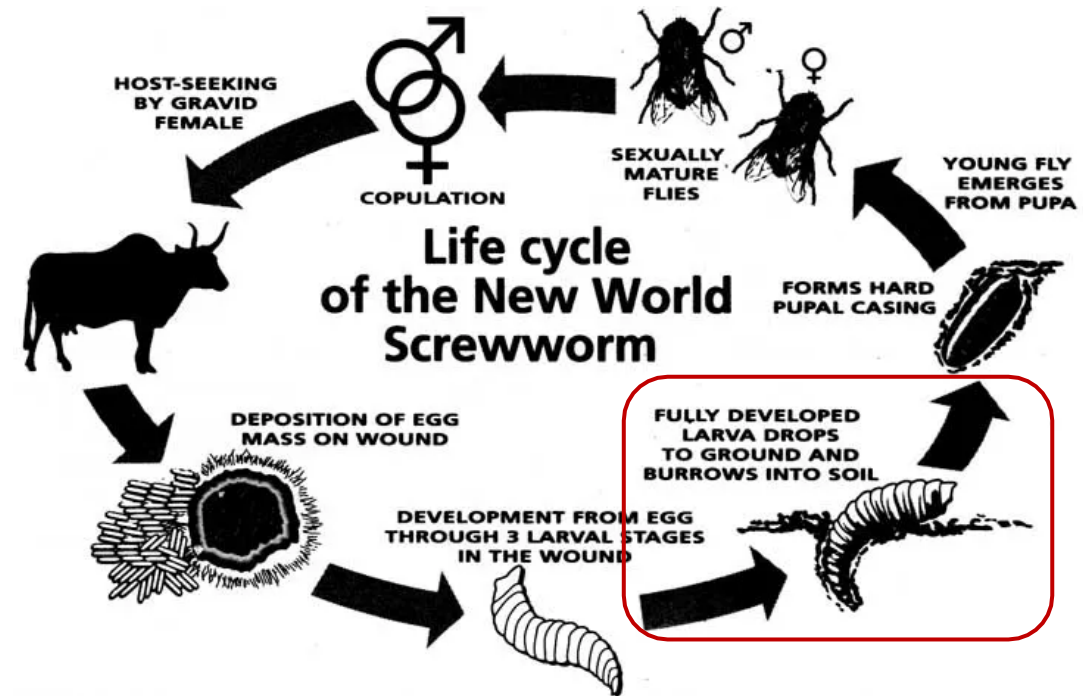
CALIFORNIA DEPARTMENT OF
FOOD & AGRICULTURE

New World Screwworm: Emergency Response Needs

Dr Nicholas Edelman, DVM CDFA AHB

NWS Infestations

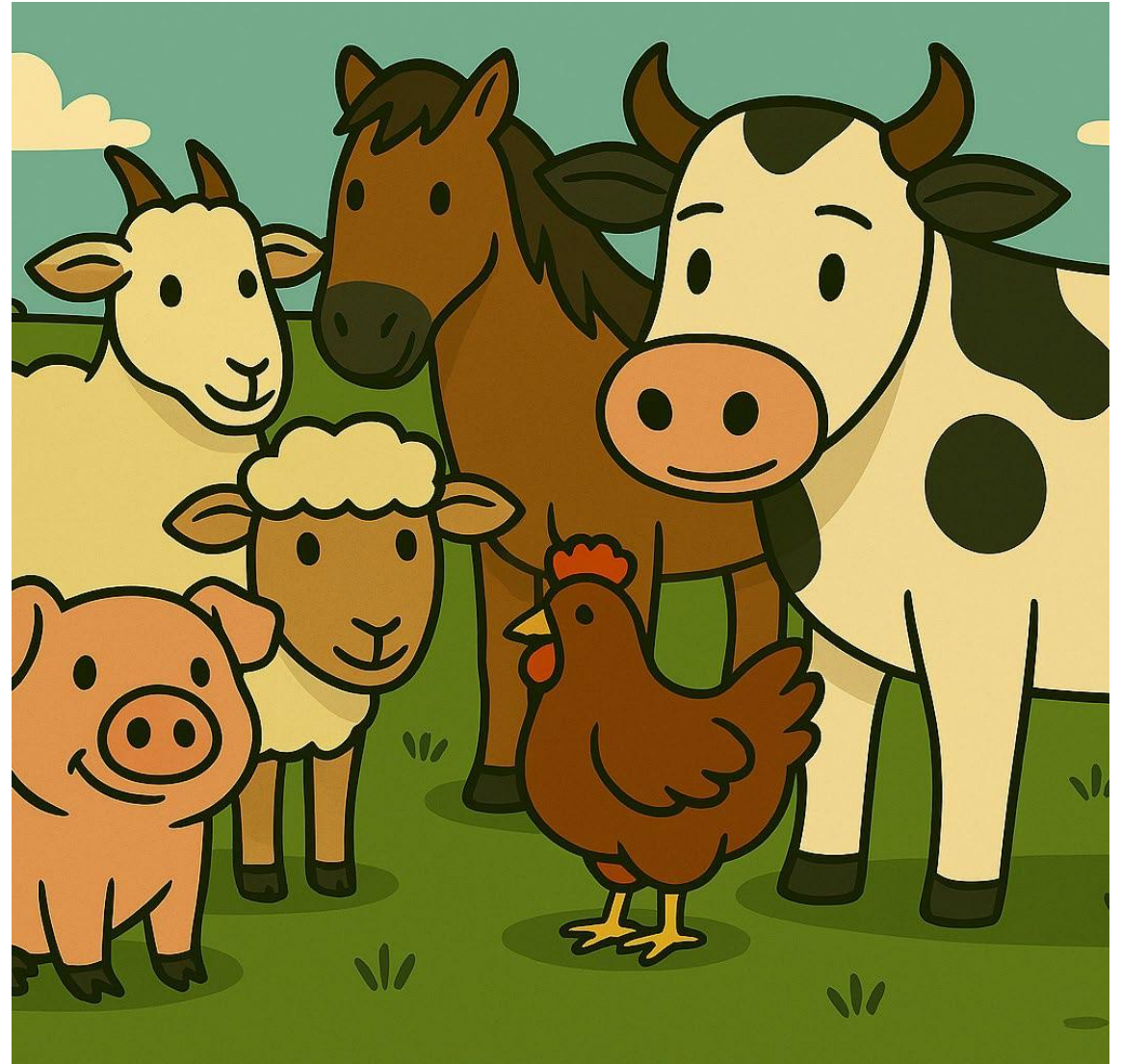
- NWS impacts all warm-blooded species
- We are not expecting large die offs of domestic animals during an NWS response. Domestic animals can recover with prompt maggot removal and treatment.



Topics

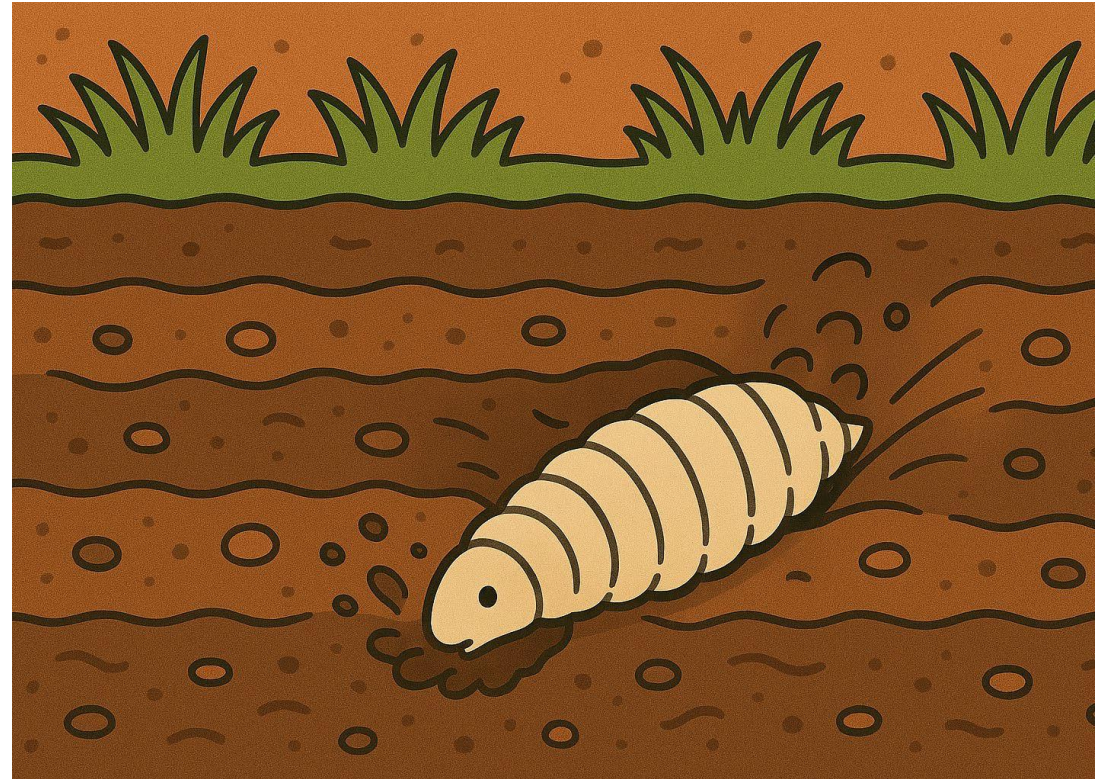
- [General Guidance: USDA Mortality Management Options](#)
- [Section 18: Emergency use of Organophosphates in California](#)
- **Other State Agency coordination needs**

For additional information regarding USDA requirements, visit the links provided on this page.



Animal Mortalities:

- New World Screwworm larvae can survive on a carcass for a few days after the death of their host.
- This requires fast response by producers.
- EPA is working on approving pesticides to prevent larvae from infiltrating into the environment to pupate.



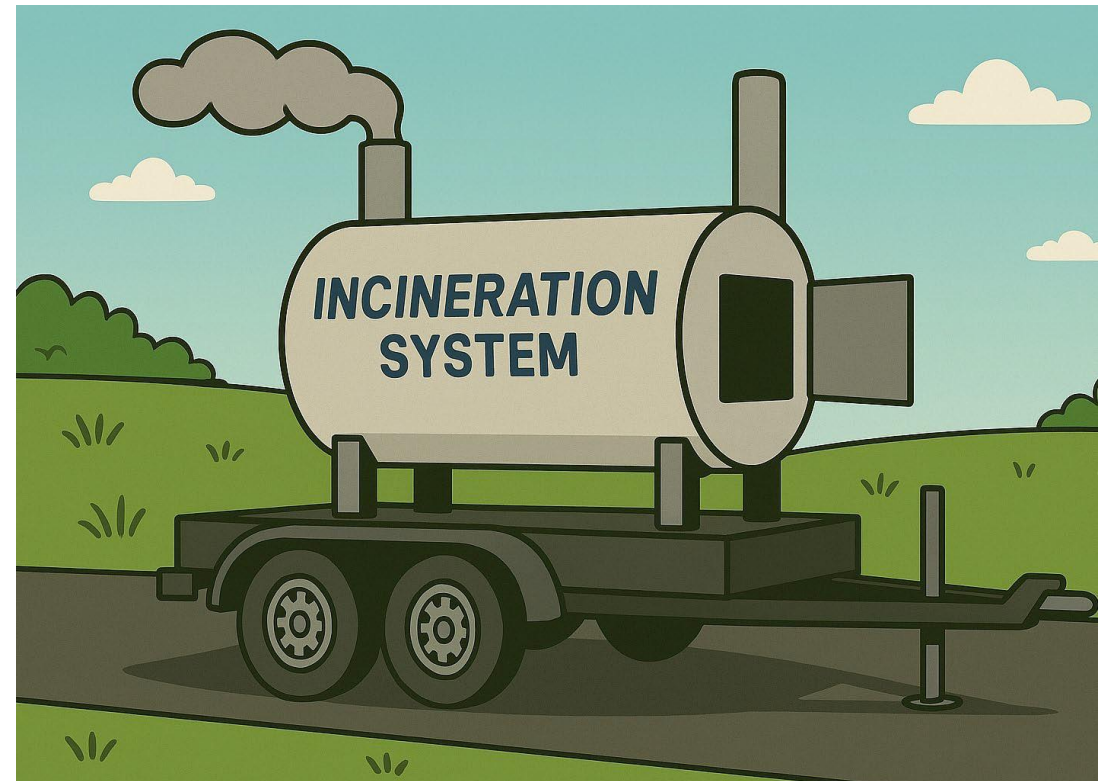
Carcass Disposal: Freezing

- Mortalities to be placed in a freezer to expose the larvae to freezing temperatures . Turning of the mortality may be needed.
- If possible, leave in freezer (<32F) for 7 days to ensure all larvae/eggs are dead.
- After 7 days, the mortalities can be bagged and transported to landfill.
- Potential centralized freezing center.



Cremation/Incineration:

- **Onsite Incineration/Cremation:**
 - CDFA will need to work with CARB & regional air boards to create a pathway for biosecure onsite methods.
- **Offsite Incineration/Cremation:**
 - Private or Commercial Creation Facilities
 - CAHFS has limited capacity to assist with incineration



Deep Burial

- We work closely with the regional and state water boards to create an approved protocol.
- This is the most expeditious and practical disposal method for NWS-infested carcasses.
- Carcasses must be covered with at least 4 feet of packed dirt (USDA suggests lime lining)



Disposal Methods to Avoid

- **Leaving on landscape to naturally decompose**
- **Landfill, even if bagged** (needs to be go through freezing protocol)
- **Rendering** (transport could spread infestation)
- **Transportation off premises** (unless bagged or otherwise fully contained for direct movement to incineration)



Disposal/Disinfestation of Animal Bedding and Waste

- Animal bedding and waste can be bagged and frozen or incinerated as well.
- Staging/holding areas it should be sprayed with a larvicidal pesticide according to label instructions.
- Facilities with dirt floors that have held infested animals must not hold new animals for three (3) biological life cycles (90 days).



Section 18: Emergency use of Organophosphates in California

- We are currently is talks with CDPR, Cal EPA, and the EPA to facilitate the use of emergency FDA approved organophosphate treatments that are not routinely allowed in California:
- These products will be supplied by USDA
 - Negasunt Powder (Coumaphos, Propoxur, & Sulfanilamide)
 - Tanidil (Coumaphos & Propoxur)



Other Potential State Agency Needs

- JIC coordination – multi-agency public affairs coordination
- State agency cooperation with field activities,
 - Checkpoints (Cal Trans; CHP)
 - Aerial dispersal of sterile flies
 - Potential air space coordination (Cal Fire/ Cal OES)
 - Potential airfield/ staging area/ cold chain/ plane loading area
 - Ground dispersal of sterile flies
 - Staging area, cold chain, loading, mapping

Next Steps



Continue monitoring this New World Screwworm outbreak



Protect California



Keep partners informed of evolving threat



Conduct Outreach



Continue multi-agency collaboration on coordination needs

Thank you!

Concerned Constituents should be directed to our website for information

https://www.cdfa.ca.gov/AHFSS/Animal_Health/screwworm/

Suspicious cases should be reported to CDFA immediately at [866-922-2473](tel:866-922-2473).

For public inquiries regarding New World Screwworm in California, please send an e-mail to NWSinfo@cdfa.ca.gov or call [866-922-2473](tel:866-922-2473).