



# California Animal Disease Traceability (ADT) Regulation Changes

Effective April 1, 2017

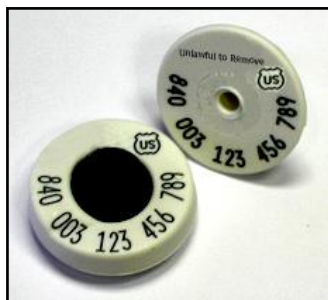
The CDFA Animal Health Branch proposed changes to ADT regulations, which mirrored the federal regulations (Title 9 Code of Federal Regulations, Part 86), included additional sections for specific California requirements, and relocated existing importation, movement and identification regulations. The regulations were approved and are effective as of April 1, 2017. Full regulation text can be found in the [California Code of Regulations](#), Division 2 of Title 3.

### OFFICIAL IDENTIFICATION (ID) OPTIONS FOR CATTLE

1. Official eartags:
  - i. National Uniform Eartagging System (NUES) tags - Silver brite and Brucellosis metal tags.
  - ii. Animal Identification Number (AIN) Tags - "840" visual or RFID tags.
  - iii. Location-based number system tags.
2. Registered brands with official brand inspection certificate (when agreed upon between CA and another state).
3. Breed registration tattoos with registration certificate (when agreed upon between CA and another state).

### THE FOLLOWING CATTLE REQUIRE OFFICIAL ID TO MOVE WITHIN CALIFORNIA

1. Dairy cattle born in CA after January 1, 2017, prior to leaving their birth premises, except those moving directly to a facility that is an approved tagging site to be tagged on arrival.
2. Dairy cattle changing ownership, except those moving directly to:
  - i. A recognized slaughtering establishment and each animal bears a USDA approved backtag.
  - ii. A facility that is an approved tagging site and tagged on arrival.
  - iii. No more than one approved livestock marketing facility that is an approved tagging site, then to a recognized slaughtering establishment to be slaughtered within 3 days after arrival, and each animal bears a USDA approved backtag.
3. Non-virgin sexually intact male cattle less than 18 months and sexually intact male cattle 18 months of age and over, except those moving:
  - i. Directly to a recognized slaughtering establishment.
  - ii. With a "Bull Slaughter Agreement" (and each animal bears a USDA approved backtag).
  - iii. Through no more than one approved livestock marketing facility that is an approved tagging site, then to a recognized slaughtering establishment to be slaughtered within 3 days after arrival, and each animal bears a USDA approved backtag.
4. Beef breed female cattle moving to a recognized slaughtering establishment, unless the animal bears a USDA approved backtag.



# Cattle Entering California

## THE FOLLOWING CATTLE REQUIRE OFFICIAL ID TO ENTER CALIFORNIA

1. All dairy cattle, of any age, including steers.
2. Sexually intact beef breed male cattle 18 months of age and over.
3. Sexually intact beef breed female cattle 6 months of age and over.
4. Cattle of any age used for rodeo, recreation, show or exhibition purposes.
5. Mexican origin cattle regardless of age or sex.
6. Cattle requiring disease testing.

### Exemptions:

- i. Moved directly from a location in CA through another state to a second location in CA.
- ii. Moved directly from the farm-of-origin to an approved tagging site and tagged on arrival.
- iii. Moved with another form of identification as agreed upon by CA and another state.
- iv. Moved with a special entry permit to be vaccinated on arrival.
- v. Moved directly to a recognized slaughtering establishment to be slaughtered within 3 days of arrival, and must:
  - ◇ Bear a USDA backtag or
  - ◇ Be from the farm-of-origin and have a USDA backtag applied at the plant.
- vi. Moved directly from farm-of-origin to no more than one approved livestock marketing facility, then moved to a recognized slaughtering establishment to be slaughtered within 3 days of arrival. A USDA backtag must be applied at the market.



## **ALL CATTLE ENTERING CALIFORNIA REQUIRE A CERTIFICATE OF VETERINARY INSPECTION (CVI) unless:**

1. Moved directly to a recognized slaughtering establishment and are accompanied by an owner shipper statement, bill of sale or a brand certificate.
2. Moved directly to an approved livestock marketing facility from the farm-of-origin and do not move interstate from the facility unless accompanied by a CVI.
3. Moved from the farm-of-origin for veterinary medical examination.
4. Moved directly from a location in CA through another state to a second location in CA.
5. Moved with a Pasture to Pasture Permit.
6. Using another form of documentation as agreed upon by CA and another state.

## THE OFFICIAL ID MUST BE RECORDED on the CVI (or alternate document), unless the cattle are:

1. Moved from an approved livestock marketing facility directly to a recognized slaughtering establishment.
2. Sexually intact beef breed under 18 months of age, all steers, or spayed heifers, **except the ID must be recorded for rodeo, recreation, exhibition or show stock.**

## STATEMENTS REQUIRED:

1. If the cattle do not require official ID, the CVI (or alternate document) must state **why** they are exempt.
2. If the cattle require official ID but it does not need to be recorded, the CVI (or alternate document) must state **"All animals bear official ID"**.

## **ALL CATTLE ENTERING CALIFORNIA REQUIRE AN INTERSTATE LIVESTOCK ENTRY PERMIT unless:**

1. Moving with a special entry permit.
2. Moving directly from a location in CA through another state to a second location in CA.

**Permits are issued prior to entry, and valid for 15 days.**

**Animal Health Branch Permit Line: (916) 900-5052**

**CDFA Animal Health Branch**  
Headquarters - (916) 900-5002  
Redding District - (530) 225-2140  
Modesto District - (209) 491-9350  
Tulare District - (559) 685-3500  
Ontario District - (909) 947-4462  
**USDA-APHIS-VS (916) 854-3950 or (877) 741-3690**

For more information on the Animal Health Branch, please visit, or scan:  
[www.cdfa.ca.gov/ahfss/animal\\_health](http://www.cdfa.ca.gov/ahfss/animal_health)

