



# Avian/Poultry Entry Requirements

## Live Poultry and Hatching Egg Entry Requirements

All poultry\* imported into California require:

A Certificate of Veterinary Inspection (CVI), also known as a health certificate, completed by a USDA Category II accredited veterinarian. The CVI must be dated within 30 days prior to shipment.

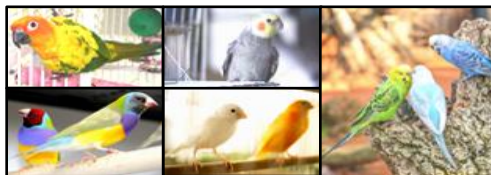
### Exemption:

*Flock of origin is rated or classified as Pullorum-Typhoid Clean or Free by the National Poultry Improvement Plan (NPIP) and the imported poultry are accompanied by a VS Form 9-3. ([3 CCR §821.4](#))*

**\*Poultry** means all chickens, turkeys, turkins, pheasants, peafowl, guinea fowl, quail, ducks, geese, swans, gallinules, doves, pigeons, grouse, partridges, francolin, tinamou, ostriches, and other ratites (including but not limited to the rhea, emu, and cassowary), and hatching or embryonated eggs.



## Psittacine and Other Pet Bird Entry Requirements



Psittacines (e.g. budgerigars, parrots, cockatiels, etc.) and other pet birds imported into California do **not** have any CVI or CDFA permit requirements.

Monk or Quaker parakeets are considered restricted species under the [California Department of Fish and Wildlife \(CDFW\) Restricted Species Laws and Regulations](#) and are **not** allowed into California. Please contact CDFW at (916) 928-5845 or (916) 928-5853 or visit their [website](#) for more information.

**Avian Disease Outbreak Alert**

**In the event of an Avian Disease Outbreak, there may be additional California entry requirements for live poultry/pet birds, poultry products, hatching eggs, and table eggs. Please visit the [Avian Health Program Website](#) for up-to-date information.**

**Animal Health Branch Permit Line:  
(916) 900-5052**

**Animal Health and Food Safety Services  
Animal Health Branch**

Headquarters - (916) 900-5002  
 Redding District - (530) 225-2140  
 Modesto District - (209) 491-9350  
 Tulare District - (559) 685-3500  
 Ontario District - (909) 947-5932

For California entry requirements of other livestock and animals, please visit the following:  
[Information About Livestock and Pet Movement](#) or [Animal Health Entry Requirement Interactive Website](#)

For more information on the Animal Health Branch please visit:  
[www.cdffa.ca.gov/ah](http://www.cdffa.ca.gov/ah)

