



The webinar will begin shortly.

Note: this webinar will be recorded.



Regulatory Alignment Study Overview

California Department of Food and Agriculture

California Environmental Protection Agency

State Water Resources Control Board

May 18, 2023

Department Introductions

- Christine Birdsong, Undersecretary





Webinar Guidelines

- Select the “Q&A” box and enter your question.
- Questions will be addressed at the end of the presentation as time allows.

Project Team Introductions



- Wendy Pratt, Managing Director
- Tommy Abeyta, Senior Manager
- Jason Chan, Manager
- Paul Marcuzzo, Manager
- Renae Peden, Manager
- Jamey Hammond, Senior Staff
- Jake Hollowed, Staff



- Mike Blankinship
- Alyssa Nagai
- Stephen Burkholder
- Michael Zadeh
- Kelly Trunnelle
- Stephen Metzger
- James Lem
- Trevor Suslow
- John Roncoroni
- Collin McVey



Project Team Introductions

- Carla Sanchez, CDFA
- Sam Blacklock, CDFA
- Brianna St. Pierre, Water Boards
- Katy Landau, CalEPA

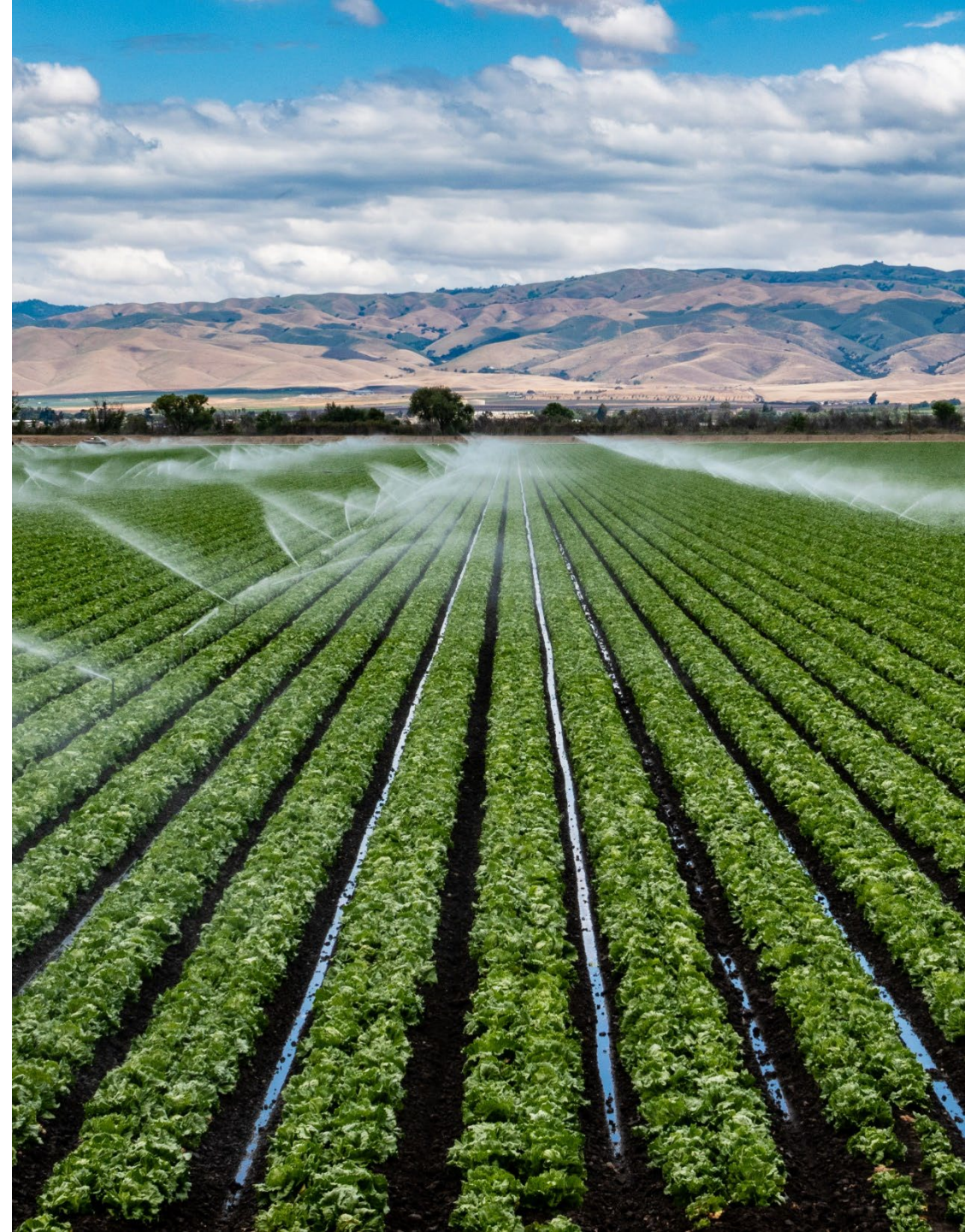


Agenda

1. Regulatory Alignment Study Background
2. Regulatory Alignment Study Objectives
3. Regulatory Alignment Study Milestones
4. Next Steps – How to stay involved?
5. Questions

Background

- Regulatory compliance pressures are an increasing concern to producers that contribute to California's \$50+ billion agricultural industry.
- In recent years, federal, state, and local regulations involving food safety, water quality, and other categories have escalated regulatory compliance burdens on California's producers of all sizes.
- Stakeholders have specified that compliance with food safety and water quality regulations are particularly challenging in terms of reporting and compliance considering the novelty of some of the associated requirements.
- Streamlining food safety and water quality regulatory reporting and compliance processes regulated by CDFA, CalEPA, and Water Boards for the agriculture sector would directly impact the resilience of these businesses and California's rural economy.



Background

- In Fiscal Year 2021-22, CDFA was allocated general funds to evaluate the alignment of regulatory reporting activities across state agencies (i.e., CDFA, CalEPA, and Water Boards) to reduce unnecessary burdens to producers in their efforts to meet regulatory compliance.
- In November 2022, CDFA contracted with Crowe to identify opportunities for regulatory alignment and improved reporting processes which would reduce the cost of reporting and compliance for producers, while ensuring environmental and public health protections.
- By 2025, Crowe will provide CDFA, CalEPA, and Water Boards with proposed implementation plans along with technological enhancement recommendations to decrease the number of touchpoints required for producers to achieve regulatory compliance and increase information sharing across agencies.

Regulatory Alignment Study Objectives



Evaluate state regulatory requirements within the areas of water quality and food safety for the agricultural community and identify environmental and public health protections.



Conduct listening sessions to gather input from the agricultural community relating to their experiences with the reporting requirements and process in these areas.



Convene the agricultural community and regulators to review and map existing regulatory pathways for water quality and food safety to identify opportunities to improve efficiency and information sharing.



Identify and prepare implementation plans for recommended process improvements to streamline reporting requirements.



Provide recommendations to CDFA, CalEPA, and the State Water Board for technological enhancement to ease the administrative burden of the agricultural community.

Recognizing the Full Spectrum of the Agricultural Community

- It is important to recognize the diversity of California's agricultural community to adequately meet the study's objectives.
- For the purposes of the study, Crowe will utilize the term "agricultural community" to account for the full spectrum of stakeholders that will likely be impacted by the study's outcomes, including but not limited to producers, farmers, ranchers, dischargers, growers, food processors, coalitions, associations, environmental groups, environmental justice groups, health advocates, and others.
- Crowe urges participation from the full spectrum of California's agricultural community to participate in the study to successfully identify comprehensive and meaningful regulatory pathways.



Regulatory Landscape & Scope of Study



Food Safety Regulatory Requirements in Scope of Study

Produce Safety Program: as it relates to covered products in the Food Safety Modernization Act (FSMA) Produce Safety Rule.

- 21 CFR Part 112:
 - Subparts A – F
 - Subpart I, K, and L – Q
 - Agricultural Water Proposed Rule (Subpart E).



Water Quality Regulatory Programs in Scope of Study

- **Irrigated Lands Regulatory Program**
 - Drinking Well Water Monitoring Program
- **Central Valley Salinity Alternatives for Long-Term Sustainability (CV-SALTS)**
- **Confined Animal Facility / Concentrated Animal Feeding Operations (CAF/CAFO) Program**
- **Stormwater Program – Industrial General Permit**
- **State and Regional Winery Programs**



Other Areas to be Explored

- **California Leafy Green Products Handler Marketing Agreement (LGMA)**
- **California Cantaloupe Advisory Board (CCAB)**
- **CDFA Fertilizer and Research Education Program**



Stakeholder Outreach & Involvement

Crowe will work with CDFR, CalEPA, and Water Boards to conduct comprehensive outreach to notify all interested stakeholders in advance on how to participate in key milestones of the study.

Key milestones include:

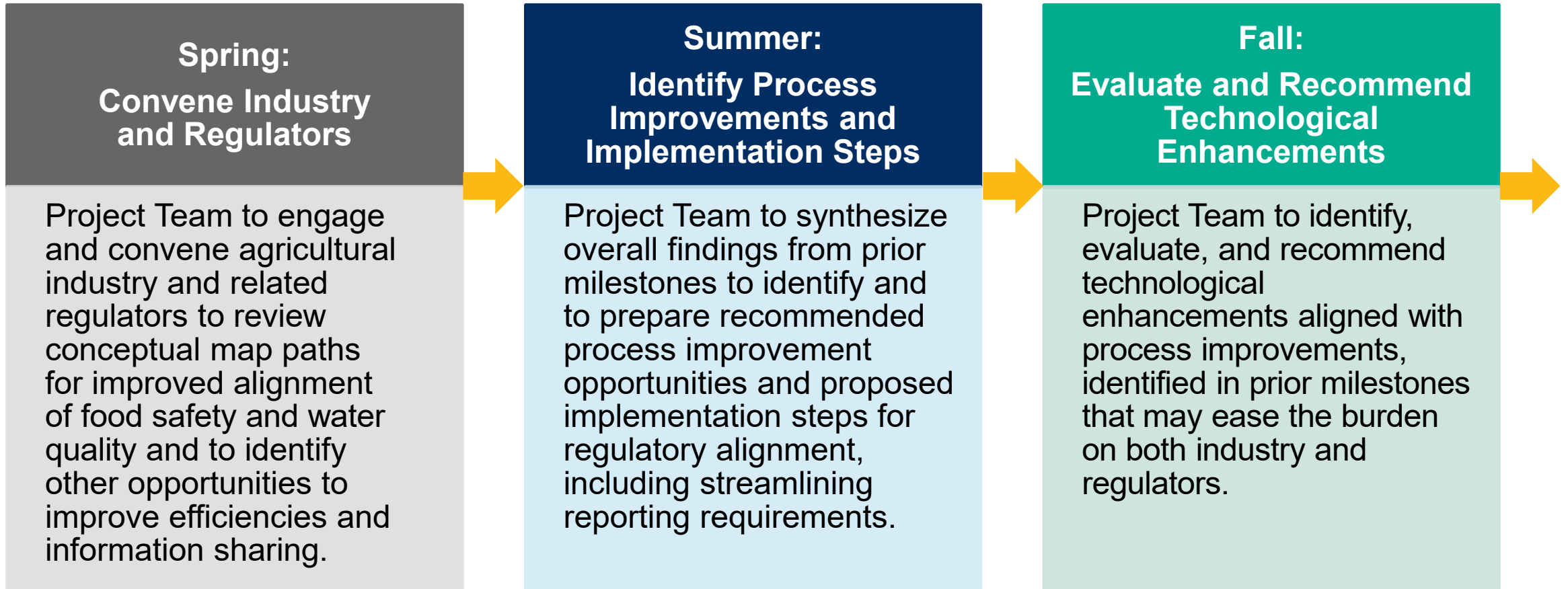
- **Spring 2023:** Informational session with stakeholders to present the study.
- **Summer 2023:** Conduct listening sessions to gather input from the agricultural community relating to their experiences with the reporting requirements and process in these areas.
- **Winter 2023 / Spring 2024:** Workshops with stakeholders, CDFR, CalEPA, Water Boards to review and provide feedback on conceptual map paths for improved alignment of water quality and food safety regulations.

Regulatory Alignment Study Milestones – 2023



Stakeholder Outreach

Regulatory Alignment Study Milestones – 2024



Stakeholder Outreach

Regulatory Alignment Study Milestones – 2025

Winter/Spring: Present Solutions and Recommended Implementation Plans

- Project Team to present final report detailing solutions and regulatory alignment recommendations resulting from the study.
- Project Team to develop a proposed implementation plan including detailed timelines, mechanisms, strategies, and actions that CDFA, CalEPA, and Water Boards can employ to implement recommended process improvements and related technological solutions (e.g., data system improvements and/or other IT systems).

How to stay involved?

- Monitor the Regulatory Alignment Study webpage for updates: <https://www.cdfa.ca.gov/RegulatoryAlignment/>
- Participate in listening sessions to be held this Summer
- Review public reports and attend public presentations
- Send feedback or questions to: RegulatoryAlignmentStudy@cdfa.ca.gov

Questions



Thank You

Wendy Pratt

Wendy.Pratt@crowe.com

Tommy Abeyta

Tommy.Abeyta@crowe.com

Regulatory Alignment Study Project Email

RegulatoryAlignmentStudy@cdfa.ca.gov