



Joint Committee on Fairs Allocation and Classification

Network of California Fairs 2002/2003 Expenditure Plan

May 2002



WILLIAM (BILL) J. LYONS, JR., SECRETARY

California Department of Food and Agriculture
Division of Fairs & Expositions



California Department of Food and Agriculture
Division of Fairs and Expositions
1010 Hurley Way, Suite 200
Sacramento, CA 95825
(916) 263-2952
www.cdfa.ca.gov/fe

May 2002

To: Members, Joint Committee on Fairs Allocation and Classification

Subject: 2002/2003 Expenditure Plan for the Network of California Fairs

Please find enclosed the 2002/2003 Expenditure Plan for the Fair & Exposition Fund and the Satellite Wagering Account. This expenditure plan will serve the interests of the State of California and your constituents, as well as deliver the maximum benefit to fairs at the local level. Fairs are assets to communities, and this plan will support their local efforts.

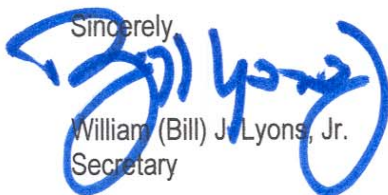
Following the resurgence of patriotism in the past year, fairs continue to play a vital role as community gathering places. Recognizing this important role, many fairs are using patriotic themes for this year's fair, such as "Red, White, and Blue for 2002", as well as providing venues to recognize the efforts of local firefighters and police. Fairs that have already taken place experienced increased attendance, and we believe this trend will last throughout this fair season, as Californians seek to reconnect with family and friends in the long-held tradition of visiting their "hometown" fair.

The attached expenditure plan will provide a portion of the funding necessary to keep our fairs serving this important role to our community. This report contains the proposed expenditure plan; overview of the network of California fairs; roles of various State organizations; letters from California fairs supporting this year's expenditure plan; and examples of successful fair projects.

We respectfully request your approval of this plan. In addition, we are requesting the Joint Committee grant the Secretary of Food and Agriculture the authority to make appropriate expenditure adjustments in the categories identified should revenue fluctuations occur.

My staff and I look forward to the opportunity to discuss this plan with you. If you would like any additional information prior to the hearing, please contact me, or Elizabeth (Liz) Houser, Director of the Division of Fairs and Expositions. Ms. Houser may be reached at (916) 263-2952, or by e-mail at ehouser@cdfa.ca.gov.

Sincerely,



William (Bill) J. Lyons, Jr.
Secretary

Enclosure

TABLE OF CONTENTS

Joint Committee on Fairs Allocation and Classification Members

2002 Secretary's Advisory Committee on Fairs' Members

Executive Summary

- Tab 1** Report on 2002/2003 Expenditure Plan
- Tab 2** Combined Revenue & Expenditure Plan (191 & 192)
- Tab 3** Fair and Exposition Fund (191)
- Tab 4** Satellite Wagering Account (192)
- Tab 5** 2002/2003 Local (Base) Allocation
- Tab 6** Listing of California Fairs
- Tab 7** Organizational Relationship
- Tab 8** Letters of Support
- Tab 9** Fair Success Stories

**JOINT COMMITTEE ON FAIRS ALLOCATION AND CLASSIFICATION
MEMBERS' FAIR REPRESENTATION**

Assembly



Dennis Cardoza, Chair (D) – District 26

Lodi Grape Festival (SJO)
Merced County Fair (35th DAA)
Merced County Spring Fair (MER)
San Joaquin County Fair (2nd DAA)
Stanislaus County Fair (38th DAA)

Capitol Office

State Capitol, Room 3160
P.O. Box 942849
Sacramento, CA 94249-0001
Phone: (916) 319-2026
Fax: (916) 319-2126



Dean Florez (D) – District 30

Big Fresno Fair (21st DAA)
Kern County Fair (15th DAA)
Kings Fair (24-A DAA)
Madera District Fair (21-A DAA)
Tulare County Fair (24th DAA)

Capitol Office

State Capitol, Room 2141
P.O. Box 942849
Sacramento, CA 94249-0001
Phone: (916) 319-2030
Fax: (916) 319-2130



Tim Leslie (R) – District 4

Amador County Fair (26th DAA)
Calaveras County Fair (39th DAA)
El Dorado County Fair (EDO)
Gold Country Fair (20th DAA)
Placer County Fair (PLA)

Capitol Office

State Capitol, Room 4164
P.O. Box 942849
Sacramento, CA 94249-0001
Phone: (916) 319-2004
Fax: (916) 319-2104



Abel Maldonado (R) – District 33

California Mid-State Fair (16th DAA)
Santa Maria Fair Park (37th DAA)
Santa Barbara Exposition & Fair (19th DAA)

Capitol Office

State Capitol, Room 4015
P.O. Box 942849
Sacramento, CA 94249-0001
Phone: (916) 319-2033
Fax: (916) 319-2133

**JOINT COMMITTEE ON FAIRS ALLOCATION AND CLASSIFICATION
MEMBERS' FAIR REPRESENTATION**

Assembly



Sarah Reyes (D) – District 31
Big Fresno Fair (21st DAA)
Tulare County Fair (24th DAA)

Capitol Office
State Capitol, Room 2117
P.O. Box 942849
Sacramento, CA 94249-0001
Phone: (916) 319-2031
Fax: (916) 319-2131



George Runner (R) – District 36
Antelope Valley Fair (50th DAA)
Los Angeles County Fair (LAN)
San Bernardino County Fair (28th DAA)
San Fernando Valley Fair (51st DAA)
Schools Involvement Fair (48th DAA)

Capitol Office
State Capitol, Room 2147
P.O. Box 942849
Sacramento, CA 94249-0001
Phone: (916) 319-2036
Fax: (916) 319-2136



Helen Thomson (D) – District 8
California State Fair (XPO)
Dixon May Fair (36th DAA)
Sacramento County Fair (52nd DAA)
Solano County Fair (SOL)
Yolo County Fair (40th DAA)

Capitol Office
State Capitol, Room 6005
P.O. Box 942849
Sacramento, CA 94249-0001
Phone: (916) 319-2008
Fax: (916) 319-2108

**JOINT COMMITTEE ON FAIRS ALLOCATION AND CLASSIFICATION
MEMBERS' FAIR REPRESENTATION**

Senate



Jim Costa (D) – District 16
Big Fresno Fair (21st DAA)
Kern County Fair (15th DAA)
Kings Fair (24-A DAA)
Madera District Fair (21-A DAA)
Tulare County Fair (24th DAA)

Capitol Office
State Capitol, Room 5100
P.O. Box 942848
Sacramento, CA 94248-0001
Phone: (916) 445-4641
Fax: (916) 327-5989



Joseph Dunn (D) – District 34
Orange County Fair (32nd DAA)

Capitol Office
State Capitol, Room 2080
P.O. Box 942848
Sacramento, CA 94248-0001
Phone: (916) 445-5831
Fax: (916) 323-2323

Maurice Johannessen (R) – District 4



Butte County Fair (BUT)
California State Fair (XPO)
Colusa County Fair (44th DAA)
Del Norte County Fair (41st DAA)
Dixon May Fair (36th DAA)
Glenn County Fair (42nd DAA)
Gold Country Fair (20th DAA)
Inter-Mountain Fair of Shasta County (SHA)
Nevada County Fair (17th DAA)
Placer County Fair (PLA)
Sacramento County Fair (52nd DAA)
Shasta District Fair (27th DAA)
Silver Dollar Fair (3rd DAA)
Siskiyou Golden Fair (10th DAA)
Solano County Fair (SOL)
Tehama District Fair (30th DAA)
Trinity County Fair (TRI)
Tulelake-Butte Valley Fair (10-A DAA)
Yolo County Fair (40th DAA)
Yuba-Sutter Fair (13th DAA)

Capitol Office
State Capitol, Room 5061
P.O. Box 942848
Sacramento, CA 94248-0001
Phone: (916) 445-3353
Fax: (916) 445-7750



Betty Karnette (D) – District 27
Antelope Valley Fair (50th DAA)
Los Angeles County Fair (LAN)
San Fernando Valley Fair (51st DAA)
Schools Involvement Fair (48th DAA)

Capitol Office
State Capitol, Room 5066
P.O. Box 942848
Sacramento, CA 94248-0001
Phone: (916) 445-6447
Fax: (916) 327-9113

**JOINT COMMITTEE ON FAIRS ALLOCATION AND CLASSIFICATION
MEMBERS' FAIR REPRESENTATION**

Senate

Rico Oller (R) – District 1



Amador County Fair (26th DAA)
Butte County Fair (BUT)
Calaveras County Fair (39th DAA)
Eastern Sierra Tri-County Fair (18th DAA)
El Dorado County Fair (EDO)
Gold Country Fair (20th DAA)
Inter-Mountain Fair of Shasta County (SHA)
Lassen County Fair (LAS)
Modoc – The Last Frontier (34th DAA)
Nevada County Fair (17th DAA)
Placer County Fair (PLA)
Plumas-Sierra County Fair (PLU)
Silver Dollar Fair (3rd DAA)
Tulelake-Butte Valley Fair (10-A DAA)
Yuba-Sutter County Fair (13th DAA)

Capitol Office

State Capitol, Room 2048
P.O. Box 942848
Sacramento, CA 94248-0001
Phone: (916) 445-5788
Fax: (916) 324-2680



Don Perata (D) – District 9

Alameda County Fair (ALA)
Contra Costa County Fair (23rd DAA)

Capitol Office

State Capitol, Room 4061
P.O. Box 942848
Sacramento, CA 94248-0001
Phone: (916) 445-6577
Fax (916) 327-1997



Charles Poochigian (R) – District 14

Big Fresno Fair (21st DAA)
Chowchilla-Madera County Fair (MAD)
Kern County Fair (15th DAA)
Lodi Grape Festival & Harvest Fair (SJO)
Madera District Fair (21-A DAA)
Mariposa County Fair (35-A DAA)
Mother Lode Fair (29th DAA)
San Joaquin County Fair (2nd DAA)
Stanislaus County Fair (38th DAA)
Tulare County Fair (24th DAA)

Capitol Office

State Capitol, Room 5087
P.O. Box 942848
Sacramento, CA 94248-0001
Phone: (916) 445-9600
Fax: (916) 327-3523

2002 SECRETARY'S ADVISORY COMMITTEE ON FAIRS

The Secretary's Advisory Committee on Fairs (SACF) advises the Secretary of the California Department of Food and Agriculture (CDFA) on issues related to the network of California fairs, the fair industry, and related public issues. The Committee is under the jurisdiction of the CDFA, is appointed by the Secretary of the CDFA, meets approximately three times per year, and may consist of up to 25 members. Members are qualified for service to the Secretary through their affiliations with California fairs, such as serving as the Chief Executive Officer (CEO), a fair Board Member, a Service Member, working in the fair industry, or an individual having interest and knowledge of a fair or agricultural environment. Additional members shall include the Chairperson and Vice Chairperson of the Joint Committee of Fairs Allocation and Classification and the former Secretary of the CDFA. Members are selected to provide a cross-representation of California fairs, industry members, and the public. The table below lists the Committee members and respective affiliation.

The Honorable Dennis Cardoza	California State Assembly
Norbert Bartosik, CEO	California State Fair
Tim Fennell, CEO	San Diego County Fair (22nd DAA)
Mona Foster	Public Member
Jim Henwood, CEO	Los Angeles County Fair
Dr. Bert Johnsen	Public Member
Bradley Randall, CEO	National Orange Show
Billie Sherwood, Board Member	Alameda County Fair
Leonard Stefanelli, Board Member	Grand National Rodeo Horse Show (1A DAA)
Ciro Toma, Board Member	Amador County Fair (26th DAA)
Steve Weaver, CEO	Sacramento County Fair (52nd DAA)
The Honorable Maurice Johannessen	California State Senate
Tom DiGrazia, CEO	Silver Dollar Fair (3rd DAA)
Tony Fiori, Service Member	Ray Cammack Shows
Roger Gibbs, CEO	Ventura County Fair at Seaside Park (31st DAA)
Dan Jacobs, CEO	Antelope Valley Fair (50th DAA)
Anthony Leo, CEO	Stanislaus County Fair (38th DAA)
Celeste Settrini	Public Member
Ruben Smith, Board Member	Orange County Fair (32nd DAA)
Tawny Tesconi, CEO	Sonoma-Marín County Fair (4th DAA)
Lori Vartanian, Service Member	Lori's Concessions



Tim Fennell, CEO and SACF Member; Secretary Lyons; and Barry Nussbaum, Board Member, celebrate the "Endless Summer" at the 2002 San Diego County Fair

EXECUTIVE SUMMARY

The following report presents the 2002/2003 Network of California Fairs Expenditure Plan to the Joint Committee on Fairs Allocation and Classification. The report also highlights fair successes during the 2002 fair season.

2002/2003 Expenditure Plan Highlights

The 2002/2003 Expenditure Plan is designed to reflect a combination of ongoing program support and new concepts reflecting industry and economic trends. The fairs are committed to developing a plan to add value to the sport of thoroughbred horse racing, which is the source of funds for the programs in this plan. The backstretch improvements the racing fairs began making to their facilities over the last two years will be completed with the funding provided in this plan. Eligibility for Millennium *FLEX* program funding will be tied to a fair's performance rating for the second year. This program has been well received by the fair industry and extremely valuable to fair management in identifying best business practices for fairs.

Backstretch and Track Improvements at Racing Fairs

The nine racing fairs are striving to meet or exceed the backstretch housing regulations as developed by the California Horse Racing Board (CHRB). The fairs are committed to making improvements to their facilities to provide a quality environment for the horsemen, trainers, grooms, stable assistants, and other employees during their short-term visits to the fair racing circuit. In addition, the race track preparation program will continue for its second season. This program provides funding for equipment, staff, and surface products to ensure the tracks on the fair circuit are prepared to a consistent level of quality. These efforts provide a safe racing surface for the horse and the jockey.

Millennium *FLEX* Program

This is the second year of the expanded Millennium *FLEX* program, which allows increased funding flexibility for fairs. Eligibility for the program continues to be based on fairs meeting key performance goals. Class I-V fairs are eligible for \$35,000 in funding, while class VI-VII fairs are eligible for \$30,000 in funding. Fairs may utilize the funds in a variety of ways including training, capital improvement, agricultural education, equipment purchases, and infrastructure improvements.

This will be the second year of the fair performance ratings. The fair industry found this program to be extremely valuable to assist them in identifying the areas in which they excel and those areas that needed improvement. Further, this



In 2001, Millennium *FLEX* funding made it possible for many fairs to purchase much needed equipment. The Mother Lode Fair used Millennium funding to purchase the Kawasaki MULE shown above.

**NETWORK OF CALIFORNIA FAIRS
2002/2003 EXPENDITURE PLAN**

program provides the ability to reward fairs that are following best business practices. The three performance levels identified last year will continue with this plan. Eligibility for Millennium *FLEX* funding is based upon receiving one of the following ratings:

- Class A – Fairs that are in full compliance with state mandates and industry standards and had a successful 2002 season. Eligible for full funding.
- Class B – Fairs that are in full compliance with state mandates and industry standards that had a challenged 2002 season. Eligible with the input and consultation from the California Department of Food and Agriculture (CDFA).
- Class C – Fairs not in compliance with state mandates and/or industry standards are not eligible.

Motorized Racing Task Force

California's fairs serve as a major host to the sport of motorized racing in the State. The newly formed California Fairs Alliance Motorized Racing Task Force under the auspices of the Western Fairs Association plans to develop a website, an industry newsletter and model standards to ensure the sport remains a viable revenue stream for the fairs.

2001/2002 Achievements

CDFA's Division of Fairs & Expositions (F&E), and the network of California fairs, achieved a number of key successes this past year. Achievements from last year's plan include:

- Every fair in the network received a performance rating of A, B or C. F&E and the fair industry were pleased that 65% of the fairs received an A rating; 27% received a B rating; and only 8% received a C rating. Of the six fairs that were rated C, four of them addressed their key performance issues and were upgraded to a B rating.
- Increased accountability of state funds that focused on full disclosure of available resources. The Western Fairs Association (WFA) and fair management have indicated they have the highest level of trust in CDFA and F&E. The industry feels that F&E's decisions are based on what's most beneficial to the industry as a whole.
- The expansion of the Millennium Flex funds in 2001/2002 increased flexibility and addressed changing financial needs of fairs. This change increased available fair funds and added the flexibility to meet ongoing changes in local funding priorities.
- F&E have been actively working with fair related businesses (carnivals, concessionaires, commercial exhibitors, services and suppliers) to develop strategic partnerships to benefit the entire fair industry. The initial achievement was the establishment of regulations that allow for multi-year contracting with concessionaires and commercial exhibitors. The next phase will include four newly established task forces that will review carnival contract procedures, identify areas that can be improved and adopt regulations to clarify the carnival bidding process for fairs and carnival owners. By encouraging fair related businesses and fair management to work cooperatively, F&E is optimistic that the quality of the fair experience will increase while building sound, strong business relationships that will provide mutual benefit to all parties.

NETWORK OF CALIFORNIA FAIRS 2002/2003 EXPENDITURE PLAN

Prepared for the Joint Committee on Fairs Allocation and Classification

INTRODUCTION

This report presents the 2002/2003 Expenditure Plan to the Joint Committee on Fairs Allocation and Classification. This publication includes an overview of the network of California fairs, the roles and responsibilities of various state, county and private organizations, and a comprehensive program list explaining the full range of programs supported by the Expenditure Plan.

Authority



The CDFA provides oversight to the network of California fairs through the application of law, development and review of policies and procedures, and supervision of fiscal administration. Furthermore, Business and Professions (B&P) Code Sections 19606.1 and 19620 authorize CDFA oversight of the Satellite Wagering Account and the Fair and Exposition Fund, respectively. B&P Code Sections 19606.1(c) and 19621(c) require the CDFA to prepare an annual expenditure plan for review and approval by the Joint Committee on Fairs Allocation and Classification.

The following table shows various types of expenditures authorized for each account.

Satellite Wagering Account (Acct. 192) (B&P Code § 19605.9(b), 19606.1, 19606.4)	Fair and Exposition Fund (Acct. 191) (B&P Code § 19620.1, 19630)
<ul style="list-style-type: none">• Health and Safety Projects• Bond Debt Service• Pari-mutuel Improvement• Supplemental Purses• Satellite Wagering Facility Construction• CDFA (F&E) Support• Live fair racing improvements and track preparation• California Construction Authority (CCA) baseline budget• Major Maintenance Program	<ul style="list-style-type: none">• Local (Base) Allocations to fairs• American Disabilities Act projects• Revenue Generating Program• Other local assistance programs as approved by the Joint Committee on Fairs• California Horse Racing Board (CHRB) Support• CDFA (F&E) Support• CDFA Fair Audits

THE DIVISION OF FAIRS & EXPOSITIONS

The Department of Food and Agriculture (CDFA), Division of Fairs & Expositions (F&E), provides fiscal and policy oversight of the network of California fairs and ensures the best use of available funding and other services.

Fair Oversight



This oversight responsibility includes the following (B&P Code Sections 19606.1 and 19620):

- Manage and monitor the solvency of the Fair and Exposition Fund and the Satellite Wagering Account.
- Distribute available state resources to the network of California fairs for local (base) allocations, health and safety repair projects, major maintenance projects, revenue generating projects, pari-mutuel facility improvement, and other fair programs.
- Create a framework for administration of the network of California fairs, allowing for maximum autonomy and local decision making authority.
- Providing incentives to fairs to seek matching funds and generate new revenue from a variety of sources.
- Support continuous improvement of fair programs to ensure California fairs remain highly relevant community institutions.
- Ensure annual fiscal audits and biennial compliance audits are performed.



We're ready to show!

F&E provides varying levels of oversight depending on the fair type. The following tables provide examples of the type of oversight provided to DAA's and non-DAA fair organizations:

Oversight of DAA's
<ul style="list-style-type: none"> • Approve annual budgets. • Conduct fiscal and compliance audits. • Review annual end-of-year statements of operations. • Survey and recommend facility maintenance and improvement projects. • Provide consultation to boards of directors and staff on State policies and procedures. • Analyze fair-related legislation. • Facilitate personnel transactions. • Approve contracts and bid packages. • Provide daily operational oversight to fairs experiencing managerial, fiscal, or operational challenges.

Oversight of non-DAA's
<ul style="list-style-type: none"> • Approve annual budgets. • Conduct or review fiscal and compliance audits. • Review annual end-of-year statements of operations. • Survey and recommend facility maintenance and improvement projects. • Provide consultation to boards of directors and staff on applicable State policies and procedures. • Approve carnival bid packages. • Review contractual agreements between the fair organization and host counties.

NETWORK OF CALIFORNIA FAIRS

Overview



B&P Code Section 19622.1 defines a state-supported fair organization as any fair that conducts an annual fair and submits an annual statement of operations to the CDFA. The generic term of “fairs” refers to District Agricultural Associations (DAA’s), county fairs, citrus fairs, and the California Exposition and State Fair.

The network of California fairs includes 80 fair organizations divided into four categories (the latter three are non-DAA organizations):

- 54 DAA’s - a state government entity
 - 2 DAA’s were deactivated during fiscal year 1997/98, leaving 52 active DAA’s
- 23 county fairs – County government or not-for-profit organizations
- 2 citrus fruit fairs – not-for-profit organizations
- The California Exposition and State Fair (Cal Expo) – a state agency



F&E staff offer support by attending the opening ceremony at the 2001 California State Fair and Exposition. (Left to right: Peggy Verissimo, Brock Wimberley, Kirk Amato, Kathy Kolb, Jeff Garthwait, and June Cady.

CALIFORNIA FAIRS



LEGEND

- Fair Site
- + Fairs with Live Racing
- Satellite Wagering Facility
- Special Event Centers
- OES Mobilization Sites

DAA= District Agricultural Association



FAIR ORGANIZATION CLASSIFICATIONS

Fair organizations are expected to operate within their annual budgets. In order to receive state funding, their budgets must first be approved by F&E.

To ensure equitable distribution of these funds, F&E established an allocation policy providing support to fair organizations within seven budget-related classification levels. The result is that the *smallest* fair organizations, those in levels I-IV, receive the largest annual allocation of horse racing revenues (\$180,000). Level I, II, III, and IV fairs have annual operating budgets of less than \$3 million. Many of these fairs are located in small communities with minimal opportunities for sponsorships or increased attendance. The fairs are truly the heart of the community and increased state support is critical to their success. For some level I fair organizations, the annual allocation represents up to 70 percent of their annual budget. The *largest* fair organizations, those in levels V-VII, receive the smallest allocation (\$35,000), representing less than one percent of their annual budget.

Local (Base) Allocations for 2002/2003 are shown in the table below.

Profile of Fair Class Levels & 2002/2003 Local (Base) Allocations

Class Level	Allocation Criteria			# of Fairs Per Class	Local (Base) Allocation	Total Allocation Per Class Level
	Operating Revenue (\$1,000's)	Fair Attendance (1,000's)	Perm/Temp Staff			
I	Up to 200	Up to 20	Up to 7	13	\$180,000	\$2,340,000
II *	200 - 450	20 - 40	7 - 10	21	150,000	3,150,000
III	450 - 1,000	40 - 80	10 - 20	19	124,000	2,356,000
IV	1,000 - 3,000	80 - 175	20 - 40	9	105,000	945,000
V	3,000 - 6,000	175 - 250	40 - 80	6	40,000	240,000
VI	6,000 - 10,000	250 - 400	80 - 120	6	35,000	210,000
VII	Over 10,000	Over 400	Over 120	3	35,000	105,000
Special Events (Supplemental allocation):						
Grand National Rodeo (1A DAA)					140,000	140,000
Great Western Livestock Show (24th DAA)					50,000	50,000
San Benito County Saddle Horse Show					50,000	50,000
Alameda County Fair / SAGE - Agricultural Roots Festival					30,000	30,000

\$9,616,000

Fairs not receiving base allocation in Fiscal Year 2002/2003:
California State Fair and Exposition
5th DAA (deactivated)

* Funding has been budgeted for possible reactivation of the 1st DAA in Oakland, currently a Class II fair.

BENEFITS OF CALIFORNIA FAIRS

Cultural anthropologists have said that for a community to remain healthy, members of the community must realize and appreciate what holds them together. The fair is a source of community pride that fosters common identity and loyalties across age and cultural boundaries. These benefits are realized through the celebration of shared values and interests, thus contributing to social stability and promoting civic unity.

Fairs provide facilities and activities for educational purposes and broad community services. Below are a few examples of valuable community activities that take place at California fairgrounds:

- Field trips
- Agriculture in the Classroom
- Head Start programs
- Pre-school programs
- Before/after school programs
- Charitable activities
- Weddings
- Cultural events
- Concerts
- Auto shows
- Livestock events
- Farmers markets

State and local government agencies use fairs to disseminate vital information regarding the protection of California's natural, industrial, and agricultural resources. These public outreach efforts offer communities a first-hand look at California agriculture and the essential role of this \$26 billion a year industry.

As an added benefit, California fairs promote awareness of California's cultural diversity. Approximately 8.6 million people attended California fairs and approximately 24.5 million people attended all fairground events held in rural, suburban, and urban settings. These fairs attract people from various ethnic and age groups, creating a diverse cultural representation.



This young boy and his sister enjoy learning how to plant seedlings at a hands-on display. Fairs offer what may well be a fair patron's first experience with agriculture.

Emergency Shelter



Fairs do not solely provide a location for cultural and social interaction. They also provide the people of California with facilities necessary for shelter and emergency evacuation space. Fairgrounds are invaluable to coordinate activities during emergencies such as earthquakes, floods, fires, and other natural or unnatural disasters. Fairgrounds have been used in many capacities during emergency situations; below are a few examples:

- Office of Emergency Services mobilization and emergency staging sites
- Evacuation centers
- California Department of Forestry fire mobilization locations
- Emergency preparedness training
- Temporary homeless shelters
- Red Cross staging locations
- Animal shelter during crisis (i.e., floods or fires)

Social/Economic Impact Study Underway



The Department of Food and Agriculture has contracted with KPMG Economic Consulting Services (KPMG) to complete a comprehensive economic and social impact study of the fair industry. The expected completion date is January 2003. The KPMG report will include the entire California fair industry. It will measure the impact of the fairs, as well as fair related businesses, such as carnivals, concessionaires, commercial exhibits, charitable organizations, entertainers, and service and supply providers. The report will include the impact each fair has on its community and the impact the entire fair network has on the State of California.

The last economic impact study was conducted in 1991. This study indicated that California fairs generate approximately \$1.6 billion annually in economic activities to benefit local businesses and government.

The new study will be a valuable tool to explain the importance of the fair industry as a major business force in California and provide a broader understanding of the social impact fairs have in each community. The Fair industry's value must be tangible and measured in order to respond to changing priorities, community needs and remain viable.



Secretary Lyons discusses the positive impact of fair related businesses on California's economy with the Ovation/Fanfare Team

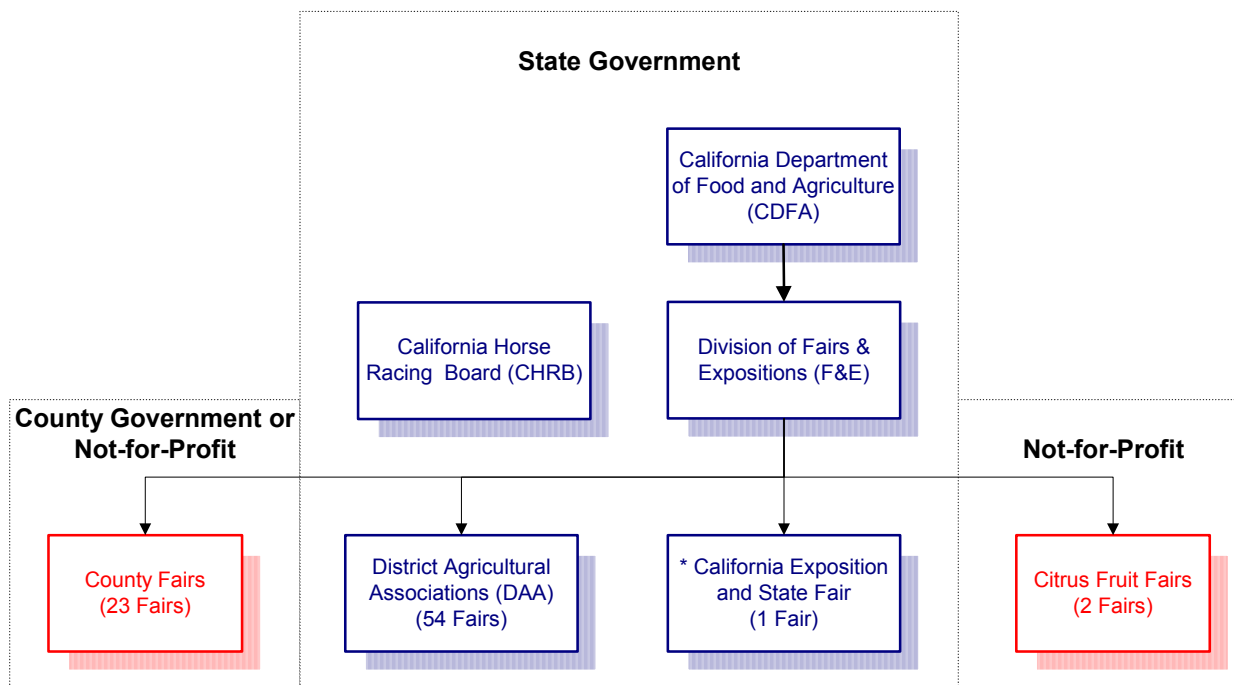
The network of California fairs positively contributes to the economy and community in more ways than just fair-time sales. The arrival of the fair in the community acts as an economic accelerator by:

- Employing approximately 810 permanent employees under the civil service system. These employees contribute to the economy and health of the state and nation by returning a portion of their earnings back to the community.
- Providing over 10,000 temporary jobs to local citizens. Examples include, senior citizens and single parents seeking to supplement their incomes, and young adults between the ages of 16 and 21 who are entering the workforce.
- Providing experience to those in need of developing basic job skills through a miniature “cycle of employment.” This experience includes seeking employment opportunities, interviewing, accepting responsibility, personal hygiene, working with others, and handling money.
- Generating an estimated **\$8 million in state sales tax revenue** from small-businesses that sell goods or services at the fairs. This tax revenue is redistributed to the local level in the form of improvements to the state’s transportation network and educational related activities.
- Generating funds that are used in the local community to support a variety of charitable activities (e.g., Rotary and Lions Clubs, Big Brothers and Big Sisters, Kiwanis, Boy Scouts and Girl Scouts, local volunteer fire departments, United Way and the Red Cross, Masons and Shriners).
- Promoting local small businesses through an opportunity to display and sell merchandise and services at local fairs.



This loving patron shows just how much she enjoys visiting the livestock barn at the 2001 California State Fair and Exposition

ORGANIZATIONAL RELATIONSHIP



State Government

- California Department of Food & Agriculture (CDFA) – A state agency responsible for the oversight of California’s agricultural industry, including the network of California fairs.
- Division of Fairs and Expositions (F&E) – Provides fiscal and policy oversight of the network of California fairs and ensures the best use of available funding and services.
- California Horse Racing Board (CHRB) – Regulates pari-mutuel wagering, to promote the horse racing and breeding industries, and to maximize State of California tax revenues. CHRB provides regulatory oversight to six privately owned race tracks, nine racing fairs, and twenty simulcast-only facilities.
- District Agricultural Association (DAA) – Holds fairs, expositions, and exhibitions to bring to light various industries, enterprises, resources, products and highlight agriculture of the state.
- California Exposition and State Fair (Cal Expo) – A state department in Sacramento responsible for holding the annual California State Fair, and exhibitions to highlight various industries, enterprises, resources, and products of the state.

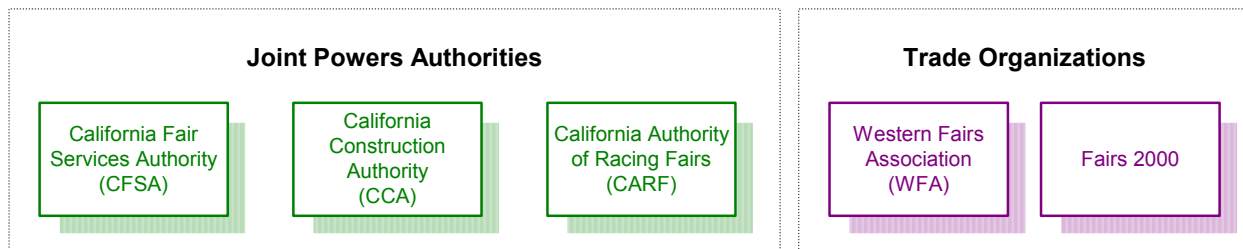
County Government or Not-for-Profit

- County Fairs – Holds fairs to highlight a county’s agricultural and natural resources.
- Citrus Fruit Fairs – Holds annual fairs to celebrate the citrus fruit harvest.

Other Organizations



In addition to the CDFA, there are other organizations involved with fair operations and industry direction. An abbreviated description of each organization's major roles are described below:



Joint Powers Authorities (JPA) – Three JPA's have been formed in California to provide specified services to the fair industry. CDFA is a party to the joint powers agreement that authorized the formation of each of the following JPA's:

- California Authority of Racing Fairs (CARF) - Provides legislative and operational support, and professional development services for its members, all of which are horse racing fairs; assists CDFA with site selection and development for satellite wagering facilities; manages the track preparation agreement; and recommends an annual Satellite Wagering Account and racing track improvement plan.
- California Construction Authority (CCA) - Provides financing, design, and construction services for health and safety improvements, satellite wagering facilities, and other projects on fairgrounds. The proceeds from revenue bonds issued by CCA may be allocated by the Secretary of CDFA to provide partial funding for such projects. With the Secretary's approval of proposed scopes of work and budgets, additional projects may be funded by the CDFA, or the fairs, and implemented by CCA.
- California Fair Service Authority (CFSA) - Administers risk-sharing pools (general liability, workers compensation, revenue protection and all-risk property) designed to protect the Fair & Exposition Fund and local fair organizations; provides safety programs, facility and carnival ride inspections; and provides purchasing, computer, employee benefits, and management services.

Trade Organizations – The following not-for-profit associations provide services to the fair industry:

- Western Fairs Association (WFA)/ California Fairs Alliance (CFA) - Sacramento based trade association representing 75 of California's 80 fairs. Services include legislative advocacy, regional meetings, training, and an annual convention. Publications include a membership directory, mini date list, quarterly *Fair Dealer* magazine and *Update* newsletter.
- Fairs 2000, Inc. – A California trade association serving the fair industry.



Secretary Lyons with
WFA President, Doug Lofstrom.

FUNDING

F&E Funding Methodology



The famous jumping frog from Calaveras County Fair.



The Division of Fairs and Expositions uses the following methodology to administer funding from the Fair and Exposition (F&E) Fund and Satellite Wagering Account. This methodology was established for use in the 2000/2001 Expenditure Plan and will continue to be used for the administration of 2002/2003 Expenditure Plan funding.

- Since the F&E Fund and Satellite Wagering Account are continuously appropriated, unencumbered reserves at fiscal year-end will be included in the total available resources in the following year's expenditure plan. Therefore, total expenditures may exceed current year revenue projections. Expenditures may also be adjusted to accommodate funding fluctuations among local assistance programs, upon approval by the Secretary of Food and Agriculture.
- Expenditure Plan program costs, such as program specific materials and supplies, that are "above and beyond" the funds available to sustain F&E's general operations (i.e., the Division's State operations budget for office and staff expenses) will be funded by the respective Expenditure Plan program budget (i.e., local assistance funds).

Revenue Source

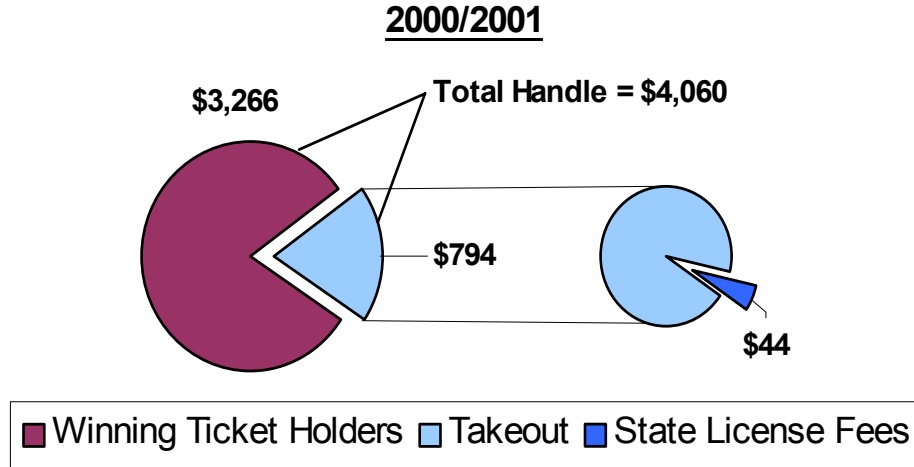


F&E is entirely dependent on horse racing revenues for funding of the Fair & Exposition (F&E) Fund and the Satellite Wagering Account. These resources are limited and must be used in an efficient manner.

California's pari-mutuel wagering system was made possible by a constitutional amendment in 1933. The expressed intent of the Horse Racing Law allows pari-mutuel wagering at horse tracks. Additionally, the law encourages agriculture and generates public revenues. A portion of those public revenues is distributed to the F&E Fund and Satellite Wagering Account to benefit the network of California fairs. F&E administers the funds to ensure these financial resources are used for the purposes intended.

Revenue Source (Con't)

The chart below depicts the source of State License Fees in 2000/2001 (in \$ Millions):

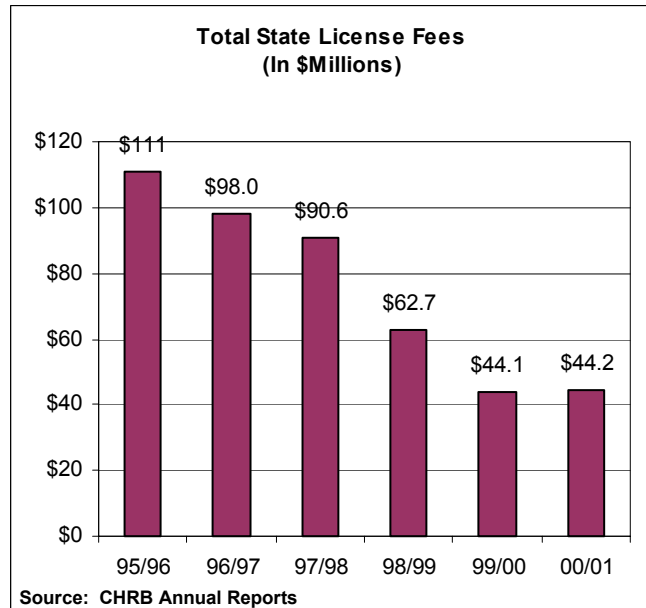


Source: CHRB, 2000/2001 Annual Report.

Fiscal Trends



The California Horse Racing Board (CHRB) records indicate that the total amount wagered on horse racing has increased steadily since Fiscal Year 1994/1995, while state license fees available to fund the fairs have declined. The charts below show the inverse correlation between the total handle to the total state license fees available to fund the Fair and Exposition Fund and the Satellite Wagering Account.



Fiscal Trends (Con't)

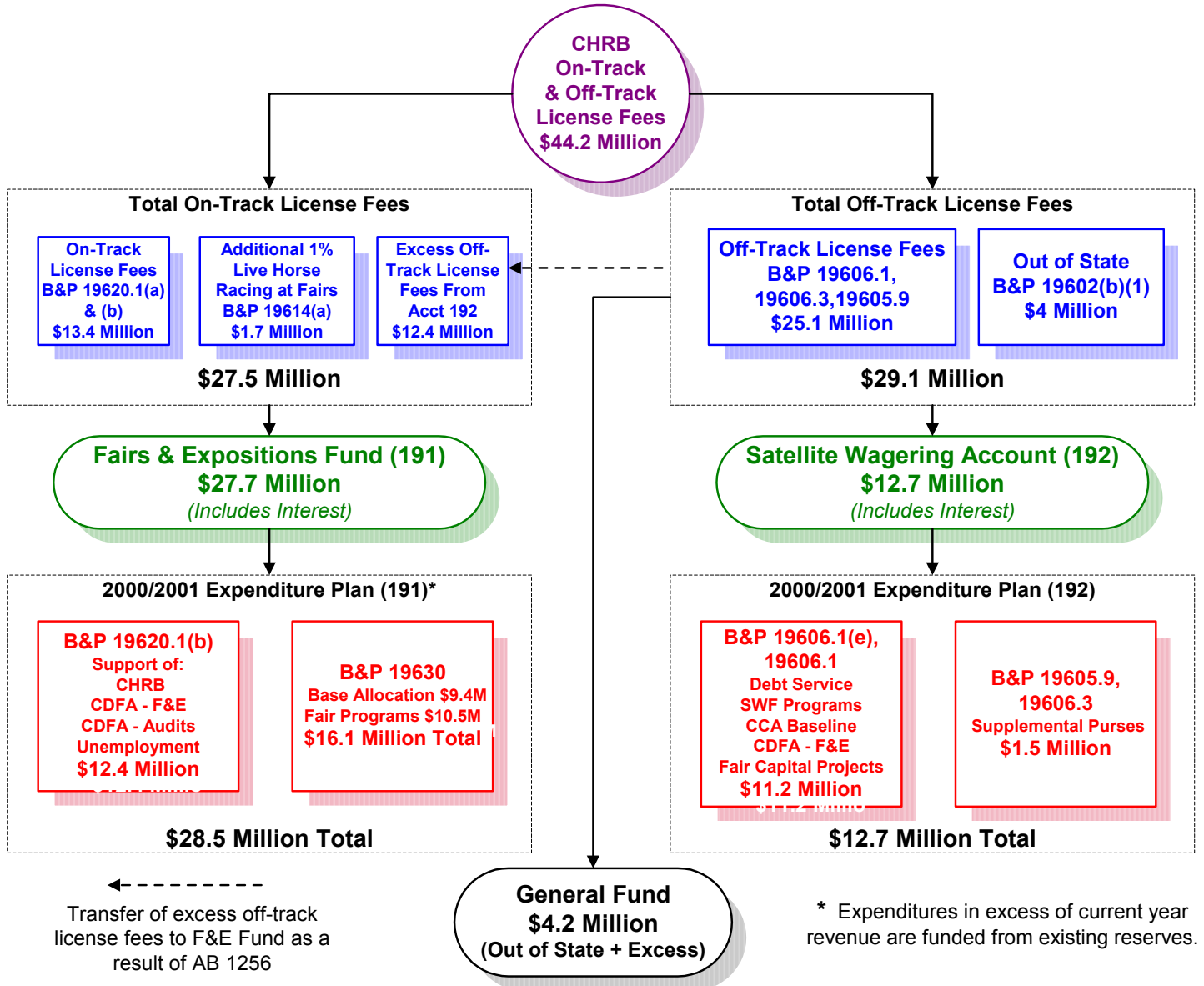
When pari-mutuel wagering in California was created through a constitutional amendment in 1933, horse racing revenues were generated solely from live racing at California tracks. State license fees generated from live horse racing revenue were designated to support the network of California fairs.

Over the last six decades, technological advances have created alternative means of horse racing wagering, such as satellite wagering and advance deposit wagering. Satellite wagering facilities appealed to the network of California fairs due to the potential increase in horse racing revenue and subsequent increase in state license fees. As a result, funding received from live track racing was used to construct numerous satellite wagering facilities throughout California. The introduction of satellite wagering in California created a second source of revenue, including out-of-state license fees, available to the horse racing industry, the network of California fairs and the General Fund by broadcasting California races to other facilities throughout the satellite wagering system.



Fairs are to horse racing, as schools are to the California State Lottery.

Funding Flowchart F&E Fund and Satellite Wagering Account



* Expenditures in excess of current year revenue are funded from existing reserves.

Note: Data based on 2002/2003 revenue and expenditure projections.

PROGRAM DESCRIPTIONS

The following table briefly describes programs recommended for funding in the 2002/2003 Network of California Fairs Expenditure Plan:

Administrative Oversight \$16,620,000	
California Horse Racing Board Support (CHRB)	Budget Act appropriation for operational support of the California Horse Racing Board (B&P Code section 19620.1(b)).
Bond Debt Service	Pays debt service on bonds issued for the construction and maintenance of fair facilities (B&P Code section 19606.1 (a)(1))
CDFA Support - Fairs and Expositions (F&E)	Budget Act appropriation for operational support of F&E (B&P Code sections 19606.1 and 19620).
Supplemental Purses	Provides appropriation to supplement purses at Northern California fairs and Los Angeles County area (B&P Code sections 19605.9 and 19606.3).
CDFA Support - Audit Program	Budget Act appropriation for annual fiscal and biennial compliance audits of all DAA's and selected county fairs. Assures individuals entrusted with public resources are accountable to the public and other levels and branches of government.
Unemployment Insurance	Budget Act appropriation to offset fairs' unemployment costs (B&P Code section 19620.1(b)).
Rural Healthcare Equity	F&E pays for additional health benefit costs incurred by DAA's for State employees living in rural areas with no available HMO's.
Local Assistance \$28,573,314	
Operational Support \$2,180,249	
California Construction Authority (CCA)	Funds the operational support of CCA, a Joint Powers Authority, which provides design, engineering, construction, research real estate and master planning services to fairs.
Property Insurance	Provides funding for the purchase of property insurance to protect fair facilities.
General Fair Programs & Funding \$17,065,065	
Local (Base) Allocation	Provides funds for discretionary use by local fair organizations with classification criteria that assign greater support to level I through IV fairs.
Millennium <i>FLEX</i>	<p>An incentive program by which fairs are eligible to receive funding based on their performance rating to be used for:</p> <ul style="list-style-type: none"> • Travel and registration expenses to attend compliance and technology training (accounting, purchasing, contracting, etc.); • Purchase of information technology upgrades and office equipment (e-mail and internet access, fax machines, photocopiers, computer hardware and software, e-commerce, e-government, etc.); • Real estate analysis, development, and planning; • Exploration of alternative financial opportunities; • Equipment Purchases; • Capital Improvement; • Agricultural Education; • Health & Arts Funding; • Backstretch improvements; • Address audit concerns; • Infrastructure improvements; • Modernization of operations.

**NETWORK OF CALIFORNIA FAIRS
2002/2003 EXPENDITURE PLAN**

General Fair Programs & Funding (Con't) \$17, 065,065	
Contingencies and Special Projects	Includes legal billings (Department of Justice & CDFA); contingent liabilities; Employee Assistance program cost for DAA's; special projects (CEO search, sexual harassment prevention, etc.); policy development (noise management, gun shows, policy manual production, etc.); loans to fairs; and funding for economic uncertainties.
Administrative and Fiscal Assistance	Provides funding for F&E to: <ul style="list-style-type: none"> • Pay outstanding debts of closed operations • Plan future fair funding concerns • Establish contingency reserve for costs associated with management oversight • Pay contingent liabilities • Fund pre-intervention assistance
Cal Expo Pro Rata Reimbursement	Reimburses Cal Expo pro-rata costs (overhead), not to exceed \$265k annually.
Fair Relations and Communication	Provides funding for F&E publications, (Fair Director's Handbook, Board of Director's Overview) and outreach efforts to benefit the network of California fairs. <ul style="list-style-type: none"> • Provides funding to pay for travel expenses for members of various fair industry related committees (i.e., Secretary's Advisory Committee on Fairs, State Rules Committee, Sheep Advisory Committee, Statewide Quality Assurance and NAAFA). • Web site enhancement to benefit the network of California fairs, gather data for use by fair organizations. • Develop ongoing relationships with fairs and local partners. • Provide outreach to national and international organizations to benefit California fairs.
CFA Motorized Racing Task Force	The California Fairs Alliance Motorized Racing Task Force formed under the auspices of the Western Fairs Association has plans to develop a website, an industry newsletter and model standards to ensure the sport of motorized racing remains a viable revenue stream for the fairs.
18 th DAA – Property Tax Reimbursement	The 18 th DAA is the only fair responsible for paying property taxes related to its ground lease with the local utility district. This one-time expenditure will subsidize the tax burden associated with the fair's ground lease with the local utility district. Future funding is dependent upon an evaluation of the fairs lease agreement options.
21 st DAA Loan Resolution	As requested by the Joint Committee on Fairs Allocation and Classification, and notwithstanding any other provision of law, this Plan reflects resolution of the 1977-1978 21 st DAA loan currently payable to the Satellite Wagering Account.
Health & Safety \$3,565,000	
Major Maintenance Program (MMP)	Provides funding for identified capital improvement projects to reduce public exposure to health and safety risks (plumbing, sewer, water supplies, electrical upgrades, etc.); including a matching fund program to begin to address the seismic retrofit issues at the Cow Palace
Emergency Fund	Provides funding for unexpected health and safety issues.

**NETWORK OF CALIFORNIA FAIRS
2002/2003 EXPENDITURE PLAN**

Health & Safety (Con't) \$3,565,000	
Livestock Quality Assurance	Provides funding to develop laboratory protocols and procedures for testing show animals' blood and urine for drugs and/or chemical residue. Provide training to fair livestock staff and show animal exhibitors.
Infrastructure \$2,300,000	
Americans with Disabilities Act (ADA)	Provides funding for infrastructure improvements intended to increase accessibility to individuals with physical limitations.
48 th DAA –Facility Construction Match	Provides matching funds for construction of a building on land donated by a local community college. This addresses an equity issue as the 48 th DAA has not received any capital improvement funds, including MMP & ADA, over the past several years since it did not have a fairground.
Training & Education \$345,000	
Professional Development & Compliance	Upon F&E approval, provides training funds for the development and delivery of seminars and workshops on emerging fair issues, such as: Maintenance Mania, Nuts & Bolts, California Fair Alliance Management Conference, Horse Racing Symposium, Financial Updates, etc. Funding will also be provided for a fair management intern program that is aimed at developing college students for positions in the fair industry.
Agricultural Education	Provides funds to promote agriculture and the fair experience through local community educational programs at fairs or schools.
Racing & Satellite Wagering Support \$3,118,000	
Race Track Preparation	Provides funds to supplement the purchase and installation of track preparation materials. Program ensures consistency in track preparation, reducing the risk of injury to horse and jockey.
Wagering Facility / Backstretch Improvements	Supports improvements to live horse racing and satellite wagering programming and facilities based upon the priorities identified in industry-wide facility surveys (backstretch, paddock, grandstand, etc.). In 2002/2003 the funding will focus on ensuring the nine racing fairs meet the California Horse Racing Board backstretch housing regulations by January 2004.

Division of Fairs & Expositions
Fair & Exposition Fund (191) and Satellite Wagering Account (192)
2002/2003 Revenue and Expenditure Plan

	(a) Budgeted 2001/2002		(b) Proposed 2002/2003		(b - a) Variance
Beginning Balance					
Fairs and Expositions (F&E)	\$6,490,110		\$319		(\$6,489,791)
Outside Entities ¹	745,485		0		(745,485)
	<u>7,235,595</u>		<u>319</u>		<u>(7,235,276)</u>
Revenues					
License Fees					
On Track (Live Racing)	13,142,000		13,407,000		265,000
1.0% Live Racing Fair Handle (B&P 19614(a))	1,806,000		1,670,000		(136,000)
Off-Track (Satellite Wagering)	24,076,000		24,938,000		862,000
SMIF Interest Revenue	<u>1,000,000</u>		<u>350,000</u>		<u>(650,000)</u>
Total Revenues	<u><u>40,024,000</u></u>		<u><u>40,365,000</u></u>		<u><u>341,000</u></u>
Fund Transfers & Other Receipts					
Loan Payments/Receipts					
21st DAA	0		3,927,565		3,927,565
Other Fairs	25,000		47,000		22,000
Transfers in					
Capital Project Savings	0		1,100,000		1,100,000
Loan Fund Interest Revenue ⁶	900,000		0		(900,000)
Transfers to Other Funds					
Retired DAA Employee Benefits ⁶	(246,000)		(246,000)		0
Total Available Resources	<u><u>\$47,938,595</u></u>		<u><u>\$45,193,884</u></u>		<u><u>(\$2,744,711)</u></u>
Expenditures					
Administrative Oversight					
California Horse Racing Board Support (CHRB)	8,152,000		8,342,000		190,000
Bond Debt Service	2,560,000		2,260,000		(300,000)
CDFA Support - Fairs & Expositions (F&E)	2,472,000		2,568,000		96,000
Supplemental Purses	1,507,000		1,507,000		0
CDFA Support - Audit Program	1,003,000		943,000		(60,000)
Unemployment Insurance	950,000		950,000		0
Rural Healthcare	0		50,000		50,000
	<u>16,644,000</u>	34.72%	<u>16,620,000</u>	36.78%	<u>(24,000)</u>
Local Assistance					
Operational Support					
California Construction Authority (CCA)	1,880,249		1,730,249		(150,000)
Property Insurance	450,000		450,000		0
	<u>2,330,249</u>	4.86%	<u>2,180,249</u>	4.82%	<u>(150,000)</u>
General Fair Programs & Funding					
Local (Base) Allocations ³	9,436,000		9,616,000		180,000
Millennium FLEX (Optional) ²	4,025,000		2,650,000		(1,375,000)
Energy Conservation & Generation (Optional) ²	500,000		0		(500,000)
Contingencies and Special Projects	750,000		271,500		(478,500)
Administrative & Fiscal Assistance	400,000		125,000		(275,000)
Cal-Expo Pro Rata Reimbursement	265,000		265,000		0
Fair Relations and Communication	75,000		75,000		0
CFA Motorized Racing Task Force	0		70,000		70,000
Economic/Social/Community Benefit Study	50,000		35,000		(15,000)
California Fairs and Arts Alliance (Optional) ²	50,000		0		(50,000)
18th DAA - Property Tax Reimbursement ⁴	0		30,000		30,000
21st DAA Loan	0		3,927,565		3,927,565
	<u>15,551,000</u>	32.44%	<u>17,065,065</u>	37.76%	<u>1,514,065</u>
Health & Safety					
MMP (Optional) ²	3,000,000		3,400,000		400,000
Emergency Fund (Optional) ²	697,000		90,000		(607,000)
Health Department Program	200,000		0		(200,000)
Livestock Quality Assurance	75,000		75,000		0
	<u>3,972,000</u>	8.29%	<u>3,565,000</u>	7.89%	<u>(407,000)</u>
Infrastructure					
ADA (Optional) ²	3,400,000		2,000,000		(1,400,000)
Revenue Generating (Optional) ²	1,250,000		0		(1,250,000)
Infrastructure Study & Database	200,000		0		(200,000)
48th DAA - Facility Construction Match ⁵	0		300,000		300,000
	<u>4,850,000</u>	10.12%	<u>2,300,000</u>	5.09%	<u>(2,550,000)</u>
Training & Education					
Professional Development & Compliance	180,000		245,000		65,000
Agricultural Education	85,000		100,000		15,000
Best Practices	25,000		0		(25,000)
	<u>290,000</u>	0.60%	<u>345,000</u>	0.76%	<u>55,000</u>
Racing & Satellite Wagering Support					
Wagering Facility/Backstretch Improvement	2,200,000		2,518,000		318,000
Satellite Wagering Facility Const. (Lancaster)	1,500,000		0		(1,500,000)
Race Track Preparation	600,000		600,000		0
	<u>4,300,000</u>	8.97%	<u>3,118,000</u>	6.90%	<u>(1,182,000)</u>
Total Expenditures	<u><u>\$47,937,249</u></u>	100.00%	<u><u>\$45,193,314</u></u>	100.00%	<u><u>(\$2,743,935)</u></u>
Ending Balance	<u><u>\$1,346</u></u>	0.00%	<u><u>\$570</u></u>	0.00%	<u><u>(\$776)</u></u>

¹ Reflects unencumbered funds from prior year expenditure plans held outside F&E.

² Programs identified as "(Optional)" are those in which fairs have the option to request funding through submission of a program application.

³ Local (Base) Allocation budget includes \$150,000 in the event the 1st DAA is reactivated.

⁴ One time expenditure. Future funding pending evaluation of current lease agreement.

⁵ One time expenditure for facility construction.

⁶ Reclassified as fund transfers (vs. revenues and expenses) for financial statement purposes. This change has no financial impact on fund balances.

**Division of Fairs & Expositions
Fair & Exposition Fund (191)
2002/2003 Revenue and Expenditure Plan**

	Actual 2000/2001	Budgeted 2001/2002	Projected 2001/2002	Proposed 2002/2003
Beginning Balance				
Fairs and Expositions (F&E)	\$6,388,852	\$5,060,959	\$3,843,000	\$204
Outside Entities ¹	0	745,485	745,485	0
	<u>6,388,852</u>	<u>5,806,444</u>	<u>4,588,485</u>	<u>204</u>
Revenues				
License Fees				
On Track (Live Racing)	14,118,305	13,142,000	13,407,000	13,407,000
1.0% Live Racing Fair Handle (B&P 19614(a))	1,740,333	1,806,000	1,669,145	1,670,000
Off-Track (Satellite Wagering)	10,886,000	11,569,000	12,382,000	12,431,000
SMIF Interest Revenue	<u>565,832</u>	<u>550,000</u>	<u>348,347</u>	<u>175,000</u>
Total Revenues	<u><u>27,310,470</u></u>	<u><u>27,067,000</u></u>	<u><u>27,806,492</u></u>	<u><u>27,683,000</u></u>
Fund Transfers & Other Receipts				
Loan Payments From Fairs	9,918	25,000	9,854	32,000
Transfers In				
Capital Project Savings	0	0	0	1,100,000
Loan Fund Interest Revenue	0	900,000	0	0
Parks & Recreation Bond Measure (AB 18) ⁸	0	0	4,015,000	0
Transfers to Other Funds				
Retired DAA Employee Benefits ⁸	(246,000)	(246,000)	(246,000)	(246,000)
50th DAA Parks & Rec Bond Measure (AB 18) ⁸	0	0	(4,015,000)	0
	<u>0</u>	<u>0</u>	<u>(4,015,000)</u>	<u>0</u>
Total Available Resources	<u><u>\$33,463,240</u></u>	<u><u>\$33,552,444</u></u>	<u><u>\$32,158,831</u></u>	<u><u>\$28,569,204</u></u>
Expenditures				
Administrative Oversight				
California Horse Racing Board Support (CHRB)	7,879,885	8,152,000	8,319,000	8,342,000
CDFA Support - Fairs and Expositions (F&E) ⁶	1,914,101	2,100,000	2,100,000	2,196,000
CDFA Support - Audit Program ⁶	0	1,003,000	1,003,000	943,000
Unemployment Insurance	950,000	950,000	950,000	950,000
CDFA Support - F&E Support Budget Augmentation	727,000	0	0	0
Rural Healthcare	0	0	0	50,000
	<u>11,470,986</u>	<u>12,205,000</u>	<u>12,372,000</u>	<u>12,481,000</u>
Local Assistance				
Operational Support				
California Construction Authority (CCA)	0	380,249	380,249	230,249
General Fair Programs & Funding				
Local (Base) Allocations ³	9,363,500	9,436,000	9,436,000	9,616,000
Millennium FLEX (Optional) ²	442,715	4,025,000	4,025,000	2,650,000
Energy Conservation & Generation (Optional) ²	0	500,000	0	0
Contingencies and Special Projects	260,530	750,000	228,255	271,500
Administrative & Fiscal Assistance	299,766	400,000	127,210	125,000
Cal-Expo Pro Rata Reimbursement	265,000	265,000	265,000	265,000
Fair Relations and Communication	9,379	75,000	53,385	75,000
CFA Motorized Racing Task Force	0	0	0	70,000
Classification & Compensation Study	0	50,000	0	0
Economic/Social/Community Benefit Study	0	50,000	433,213	35,000
California Fairs and Arts Alliance (Optional) ²	164,953	0	61,244	0
18th DAA - Property Tax Reimbursement ⁴	0	0	0	30,000
	<u>10,805,843</u>	<u>15,551,000</u>	<u>14,629,307</u>	<u>13,137,500</u>
Health & Safety				
Health Department Program	0	200,000	200,000	0
Livestock Quality Assurance	0	75,000	75,000	75,000
	<u>0</u>	<u>275,000</u>	<u>275,000</u>	<u>75,000</u>
Infrastructure				
ADA (Optional) ²	3,400,000	3,400,000	3,400,000	2,000,000
Revenue Generating (Optional) ²	1,250,000	1,250,000	1,027,000	0
Infrastructure Study & Database	100,000	200,000	200,000	0
48th DAA - Facility Construction Match ⁵	0	0	0	300,000
Capital Improvement	1,500,000	0	0	0
Deed/Title Search and Analysis	250,000	0	0	0
Equipment Exchange (Optional) ³	500,000	0	0	0
	<u>7,000,000</u>	<u>4,850,000</u>	<u>4,627,000</u>	<u>2,300,000</u>
Training & Education				
Professional Development & Compliance	134,677	180,000	180,000	245,000
Agricultural Education	0	85,000	105,000	100,000
Best Practices	0	25,000	0	0
Compliance	33,411	0	0	0
	<u>168,088</u>	<u>290,000</u>	<u>285,000</u>	<u>345,000</u>
Abatements & Accrual Adjustments ⁷	175,323	0	(409,929)	0
Total Expenditures	<u><u>29,620,240</u></u>	<u><u>33,551,249</u></u>	<u><u>32,158,627</u></u>	<u><u>28,568,749</u></u>
Ending Balance	<u><u>\$3,843,000</u></u>	<u><u>\$1,195</u></u>	<u><u>\$204</u></u>	<u><u>\$455</u></u>

¹ Reflects unencumbered funds from prior year expenditure plans held outside F&E.

² Programs identified as "(Optional)" are those in which fairs have the option to request funding through submission of a program application.

³ Local (Base) Allocation budget includes \$150,000 in the event the 1st DAA is reactivated.

⁴ One time expenditure. Future funding pending evaluation of current lease agreement.

⁵ One time expenditure for facility construction.

⁶ Actual 2000-2001 Audit Office expenses are included in "CDFA Support - Fairs and Expositions (F&E)" line item for this year only.

⁷ Reflects expense reimbursements received and prior year accrual adjustments.

⁸ Reclassified as fund transfers (vs. revenues and expenses) for financial statement purposes. This change has no financial impact on fund balances.

**Division of Fairs & Expositions
Satellite Wagering Account (192)
2002/2003 Revenue and Expenditure Plan**

	<u>Actual 2000/2001</u>	<u>Budgeted 2001/2002</u>	<u>Projected 2001/2002</u>	<u>Proposed 2002/2003</u>
Beginning Balance				
Fairs and Expositions (F&E)	\$1,056,579	\$1,429,151	\$778,000	\$115
Revenues				
License Fees				
Off-Track (Satellite Wagering)	12,664,572	12,507,000	12,644,471	12,507,000
SMIF Interest Revenue	<u>434,000</u>	<u>450,000</u>	<u>277,760</u>	<u>175,000</u>
Total Revenues	<u>13,098,572</u>	<u>12,957,000</u>	<u>12,922,231</u>	<u>12,682,000</u>
Other Receipts				
Loan Payments/Receipts				
21st DAA	0	0	0	3,927,565
Other Fairs	0	0	40,000	15,000
Total Available Resources	<u>\$14,155,151</u>	<u>\$14,386,151</u>	<u>\$13,740,231</u>	<u>\$16,624,680</u>
Expenditures				
Administrative Oversight				
Bond Debt Service	2,128,595	2,560,000	2,158,711	2,260,000
Supplemental Purses	1,430,927	1,507,000	1,429,405	1,507,000
CDFA Support - Fairs & Expositions (F&E)	<u>368,000</u>	<u>372,000</u>	<u>372,000</u>	<u>372,000</u>
	3,927,522	4,439,000	3,960,116	4,139,000
Local Assistance				
<u>Operational Support</u>				
California Construction Authority (CCA)	1,500,000	1,500,000	1,500,000	1,500,000
Property Insurance	<u>377,158</u>	<u>450,000</u>	<u>450,000</u>	<u>450,000</u>
	1,877,158	1,950,000	1,950,000	1,950,000
<u>General Fair Programs & Funding</u>				
21st DAA Loan	0	0	0	3,927,565
<u>Health & Safety</u>				
MMP (Optional) ¹	3,000,000	3,000,000	3,000,000	3,400,000
Emergency Fund	<u>500,130</u>	<u>697,000</u>	<u>697,000</u>	<u>90,000</u>
	3,500,130	3,697,000	3,697,000	3,490,000
<u>Racing & Satellite Wagering Support</u>				
Wagering Facility/Backstretch Improvement	2,486,177	2,200,000	2,200,000	2,518,000
Satellite Wagering Facility Const. (Lancaster)	1,250,000	1,500,000	1,333,000	0
Race Track Preparation	<u>600,000</u>	<u>600,000</u>	<u>600,000</u>	<u>600,000</u>
	4,336,177	4,300,000	4,133,000	3,118,000
Abatements & Accrual Adjustments ²	(263,836)	0	0	0
Total Expenditures	<u>13,377,151</u>	<u>14,386,000</u>	<u>13,740,116</u>	<u>16,624,565</u>
Ending Balance	<u>\$778,000</u>	<u>\$151</u>	<u>\$115</u>	<u>\$115</u>

¹ Programs identified as "(Optional)" are those in which fairs have the option to request funding through submission of a program application.

² Reflects expense reimbursements received and prior year accrual adjustments.

2002/2003 LOCAL (BASE) ALLOCATIONS

(By Fair Organization Name)

Class	DAA or County Abbr.	Fair Organization Name	County	Local (Base) Allocation (\$)
VI	ALA	Alameda County Fair	Alameda	\$ 35,000
II	26	Amador County Fair	Amador	150,000
V	50	Antelope Valley Fair	Los Angeles	40,000
VI	21	Big Fresno Fair	Fresno	35,000
II	BUT	Butte County Fair	Butte	150,000
II	39	Calaveras County Fair & Jumping Frog Jubilee	Calaveras	150,000
V	16	California Mid-State Fair	San Luis Obispo	40,000
III	45	California Mid-Winter Fair & Fiesta	Imperial	124,000
VII	XPO*	California State Fair & Exposition	Sacramento	0
I	MAD	Chowchilla-Madera County Fair	Madera	180,000
I	CLO	Cloverdale Citrus Fair	Sonoma	180,000
I	54	Colorado River Country Fair	Riverside	180,000
I	44	Colusa County Fair	Colusa	180,000
III	23	Contra Costa County Fair	Contra Costa	124,000
VI	01A	Cow Palace	San Francisco	35,000
I	41	Del Norte County Fair	Del Norte	180,000
II	53	Desert Empire Fair	San Bernardino	150,000
II	36	Dixon May Fair	Solano	150,000
II	18	Eastern Sierra Tri-County Fair	Inyo	150,000
III	EDO	El Dorado County Fair	El Dorado	124,000
IV	46	Farmers Fair & Festival	Riverside	105,000
II	01	Deactivated (formerly "Festival at the Lake")	Alameda	150,000
II	42	Glenn County Fair	Glenn	150,000
II	20	Gold Country Fair	Placer	150,000
III	HUM	Humboldt County Fair	Humboldt	124,000
I	SHA	Inter-Mountain Fair of Shasta County	Shasta	180,000
V	15	Kern County Fair	Kern	40,000
II	24A	Kings District Fair	Kings	150,000
II	49	Lake County Fair	Lake	150,000
II	LAS	Lassen County Fair	Lassen	150,000
III	SJO	Lodi Grape Festival & Harvest Fair	San Joaquin	124,000
VII	LAN	Los Angeles County Fair	Los Angeles	35,000
III	21A	Madera District Fair	Madera	124,000
III	MAR	Marin County Fair & Exposition	Marin	124,000
II	35A	Mariposa County Fair & Homecoming	Mariposa	150,000
I	MEN	Mendocino County Fair & Apple Show	Mendocino	180,000
III	35	Merced County Fair	Merced	124,000
II	MER	Merced County Spring Fair	Merced	150,000
I	34	Modoc - The Last Frontier Fair	Modoc	180,000
IV	07	Monterey County Fair	Monterey	105,000
II	29	Mother Lode Fair	Tuolumne	150,000
III	NAP	Napa County Fair	Napa	124,000
III	25	Napa Town & Country Fair	Napa	124,000
VI	NOS	National Orange Show	San Bernardino	35,000
III	17	Nevada County Fair	Nevada	124,000

* - Cal Expo does not receive local (base) allocation. However, they receive \$265,000 as reimbursement for Pro Rata charges.

2002/2003 LOCAL (BASE) ALLOCATIONS

(By Fair Organization Name)

Class	DAA or County Abbr.	Fair Organization Name	County	Local (Base) Allocation (\$)
VII	32	Orange County Fair	Orange	\$ 35,000
III	PLA	Placer County Fair	Placer	124,000
II	PLU	Plumas-Sierra County Fair	Plumas	150,000
III	09	Redwood Acres Fair	Humboldt	124,000
II	12	Redwood Empire Fair	Mendocino	150,000
IV	RIV	Riverside County Fair & National Date Festival	Riverside	105,000
I	52	Sacramento County Fair	Sacramento	180,000
III	MON	Salinas Valley Fair	Monterey	124,000
I	33	San Benito County Fair	San Benito	180,000
IV	28	San Bernardino County Fair	San Bernardino	105,000
VII	22	San Diego County Fair	San Diego	35,000
I	51	San Fernando Valley Fair	Los Angeles	180,000
V	02	San Joaquin County Fair	San Joaquin	40,000
IV	SMA	San Mateo County Exposition & Fair	San Mateo	105,000
IV	19	Santa Barbara Fair & Exposition	Santa Barbara	105,000
VI	SCL	Santa Clara County Fair	Santa Clara	35,000
III	14	Santa Cruz County Fair	Santa Cruz	124,000
IV	37	Santa Maria Fair Park	Santa Barbara	105,000
II	48	Schools Involvement Fair	Los Angeles	150,000
III	27	Shasta District Fair	Shasta	124,000
III	03	Silver Dollar Fair	Butte	124,000
II	10	Siskiyou Golden Fair	Siskiyou	150,000
V	SOL	Solano County Fair	Solano	40,000
VI	SON	Sonoma County Fair & Exposition	Sonoma	35,000
III	04	Sonoma-Marin Fair	Sonoma	124,000
IV	38	Stanislaus County Fair	Stanislaus	105,000
II	30	Tehama District Fair	Tehama	150,000
I	TRI	Trinity County Fair	Trinity	180,000
IV	24	Tulare County Fair	Tulare	105,000
I	10A	Tulelake-Butte Valley Fair	Siskiyou	180,000
V	31	Ventura County Fair	Ventura	40,000
II	40	Yolo County Fair	Yolo	150,000
III	13	Yuba-Sutter Fair	Sutter	124,000

Special Events (Supplemental allocation):

	ALA	Agricultural Roots Festival (ALA / SAGE)	Alameda	\$ 30,000
	01A	Grand National Rodeo	San Francisco	\$ 140,000
	24	Great Western Livestock Show	Tulare	50,000
	SBE	San Benito County Saddle Horse Show	San Benito	50,000

Total Allocations \$ 9,616,000

**NETWORK OF CALIFORNIA FAIRS
2002/2003 EXPENDITURE PLAN**

**Profile of Fair Class Levels &
2002/2003 Local (Base) Allocations**

Class Level	Allocation Criteria			# of Fairs Per Class	Local (Base) Allocation	Total Allocation Per Class Level
	Operating Revenue (\$1,000's)	Fair Attendance (1,000's)	Perm/Temp Staff			
I	Up to 200	Up to 20	Up to 7	13	\$180,000	\$2,340,000
II *	200 - 450	20 - 40	7 - 10	21	150,000	3,150,000
III	450 - 1,000	40 - 80	10 - 20	19	124,000	2,356,000
IV	1,000 - 3,000	80 - 175	20 - 40	9	105,000	945,000
V	3,000 - 6,000	175 - 250	40 - 80	6	40,000	240,000
VI	6,000 - 10,000	250 - 400	80 - 120	6	35,000	210,000
VII	Over 10,000	Over 400	Over 120	3	35,000	105,000
Special Events (Supplemental allocation):						
Grand National Rodeo (1A DAA)					140,000	140,000
Great Western Livestock Show (24th DAA)					50,000	50,000
San Benito County Saddle Horse Show					50,000	50,000
Alameda County Fair / SAGE - Agricultural Roots Festival					30,000	30,000

\$9,616,000

Fairs not receiving base allocation in Fiscal Year 2002/2003:
California State Fair and Exposition
5th DAA (deactivated)

* Funding has been budgeted for possible reactivation of the 1st DAA in Oakland, currently a Class II fair.

NETWORK OF CALIFORNIA FAIRS

(By Fair Organization Name)

Class	Org ID	Fair Organization Name	City	County
VI	ALA	Alameda County Fair	Pleasanton	Alameda
II	26	Amador County Fair	Plymouth	Amador
V	50	Antelope Valley Fair	Lancaster	Los Angeles
VI	21	Big Fresno Fair	Fresno	Fresno
II	BUT	Butte County Fair	Gridley	Butte
II	39	Calaveras County Fair & Jumping Frog Jubilee	Angels Camp	Calaveras
V	16	California Mid-State Fair	Paso Robles	San Luis Obispo
III	45	California Mid-Winter Fair & Fiesta	Imperial	Imperial
	XPO	California State Fair & Exposition	Sacramento	Sacramento
I	MAD	Chowchilla-Madera County Fair	Chowchilla	Madera
I	CLO	Cloverdale Citrus Fair	Cloverdale	Sonoma
I	54	Colorado River Country Fair	Blythe	Riverside
I	44	Colusa County Fair	Colusa	Colusa
III	23	Contra Costa County Fair	Antioch	Contra Costa
VI	01A	Cow Palace	Daly City	San Francisco
I	41	Del Norte County Fair	Crescent City	Del Norte
II	53	Desert Empire Fair	Ridgecrest	Kern
II	36	Dixon May Fair	Dixon	Solano
II	18	Eastern Sierra Tri-County Fair	Bishop	Inyo
III	EDO	El Dorado County Fair	Placerville	El Dorado
IV	46	Farmers Fair & Festival	Perris	Riverside
II	01*	Festival at the Lake	Oakland	Alameda
II	42	Glenn County Fair	Orland	Glenn
II	20	Gold Country Fair	Auburn	Placer
III	HUM	Humboldt County Fair	Ferndale	Humboldt
I	SHA	Inter-Mountain Fair of Shasta Co	McArthur	Shasta
V	15	Kern County Fair	Bakersfield	Kern
II	24A	Kings District Fair	Hanford	Kings
II	49	Lake County Fair	Lakeport	Lake
II	LAS	Lassen County Fair	Susanville	Lassen
III	SJO	Lodi Grape Festival & Harvest Fair	Lodi	San Joaquin
VII	LAN	Los Angeles County Fair	Pomona	Los Angeles
III	21A	Madera District Fair	Madera	Madera
III	MAR	Marin County Fair & Exposition	San Rafael	Marin
II	35A	Mariposa County Fair & Homecoming	Mariposa	Mariposa
I	MEN	Mendocino County Fair & Apple Show	Boonville	Mendocino
III	35	Merced County Fair	Merced	Merced
II	MER	Merced County Spring Fair	Los Banos	Merced
I	34	Modoc - The Last Frontier Fair	Cedarville	Modoc
IV	07	Monterey County Fair	Monterey	Monterey
II	29	Mother Lode Fair	Sonora	Tuolumne
III	NAP	Napa County Fair	Calistoga	Napa
III	25	Napa Town & Country Fair	Napa	Napa
VI	NOS	National Orange Show	San Bernardino	San Bernardino
III	17	Nevada County Fair	Grass Valley	Nevada
VII	32	Orange County Fair	Costa Mesa	Orange
III	PLA	Placer County Fair	Roseville	Placer
II	PLU	Plumas-Sierra County Fair	Quincy	Plumas
III	09	Redwood Acres Fair	Eureka	Humboldt

LEGEND: * = deactivated

NETWORK OF CALIFORNIA FAIRS

(By Fair Organization Name)

Class	Org ID	Fair Organization Name	City	County
II	12	Redwood Empire Fair	Ukiah	Mendocino
IV	RIV	Riverside County Fair & National Date Festival	Indio	Riverside
I	52	Sacramento County Fair	Sacramento	Sacramento
III	MON	Salinas Valley Fair	King City	Monterey
I	33	San Benito County Fair	Tres Pinos	San Benito
	SBE	San Benito County Saddle Horse Show	Tres Pinos	San Benito
IV	28	San Bernardino County Fair	Victorville	San Bernardino
VII	22	San Diego County Fair	Del Mar	San Diego
I	51	San Fernando Valley Fair	Burbank	Los Angeles
I	05*	San Francisco Fair	San Francisco	San Francisco
V	02	San Joaquin County Fair	Stockton	San Joaquin
IV	SMA	San Mateo County Exposition & Fair	San Mateo	San Mateo
IV	19	Santa Barbara Fair & Exposition	Santa Barbara	Santa Barbara
VI	SCL	Santa Clara County Fair	San Jose	Santa Clara
III	14	Santa Cruz County Fair	Watsonville	Santa Cruz
IV	37	Santa Maria Fair Park	Santa Maria	Santa Barbara
II	48	Schools Involvement Fair	Walnut	Los Angeles
III	27	Shasta District Fair	Anderson	Shasta
III	03	Silver Dollar Fair	Chico	Butte
II	10	Siskiyou Golden Fair	Yreka	Siskiyou
V	SOL	Solano County Fair	Vallejo	Solano
VI	SON	Sonoma County Fair & Exposition	Santa Rosa	Sonoma
III	04	Sonoma-Marin Fair	Petaluma	Sonoma
IV	38	Stanislaus County Fair	Turlock	Stanislaus
II	30	Tehama District Fair	Red Bluff	Tehama
I	TRI	Trinity County Fair	Hayfork	Trinity
IV	24	Tulare County Fair	Tulare	Tulare
I	10A	Tulelake-Butte Valley Fair	Tulelake	Siskiyou
V	31	Ventura County Fair	Ventura	Ventura
II	40	Yolo County Fair	Woodland	Yolo
III	13	Yuba-Sutter Fair	Yuba City	Sutter

LEGEND: * = deactivated

NETWORK OF CALIFORNIA FAIRS

(By Organization ID)

Class	Org ID	Fair Organization Name	City	County
II	01*	Festival at the Lake	Oakland	Alameda
VI	01A	Cow Palace	Daly City	San Francisco
V	02	San Joaquin County Fair	Stockton	San Joaquin
III	03	Silver Dollar Fair	Chico	Butte
III	04	Sonoma-Marin Fair	Petaluma	Sonoma
I	05*	San Francisco Fair	San Francisco	San Francisco
IV	07	Monterey County Fair	Monterey	Monterey
III	09	Redwood Acres Fair	Eureka	Humboldt
II	10	Siskiyou Golden Fair	Yreka	Siskiyou
I	10A	Tulelake-Butte Valley Fair	Tulelake	Siskiyou
II	12	Redwood Empire Fair	Ukiah	Mendocino
III	13	Yuba-Sutter Fair	Yuba City	Sutter
III	14	Santa Cruz County Fair	Watsonville	Santa Cruz
V	15	Kern County Fair	Bakersfield	Kern
V	16	California Mid-State Fair	Paso Robles	San Luis Obispo
III	17	Nevada County Fair	Grass Valley	Nevada
II	18	Eastern Sierra Tri-County Fair	Bishop	Inyo
IV	19	Santa Barbara Fair & Exposition	Santa Barbara	Santa Barbara
II	20	Gold Country Fair	Auburn	Placer
VI	21	Big Fresno Fair	Fresno	Fresno
III	21A	Madera District Fair	Madera	Madera
VII	22	San Diego County Fair	Del Mar	San Diego
III	23	Contra Costa County Fair	Antioch	Contra Costa
IV	24	Tulare County Fair	Tulare	Tulare
II	24A	Kings District Fair	Hanford	Kings
III	25	Napa Town & Country Fair	Napa	Napa
II	26	Amador County Fair	Plymouth	Amador
III	27	Shasta District Fair	Anderson	Shasta
IV	28	San Bernardino County Fair	Victorville	San Bernardino
II	29	Mother Lode Fair	Sonora	Tuolumne
II	30	Tehama District Fair	Red Bluff	Tehama
V	31	Ventura County Fair	Ventura	Ventura
VII	32	Orange County Fair	Costa Mesa	Orange
I	33	San Benito County Fair	Tres Pinos	San Benito
I	34	Modoc - The Last Frontier Fair	Cedarville	Modoc
III	35	Merced County Fair	Merced	Merced
II	35A	Mariposa County Fair & Homecoming	Mariposa	Mariposa
II	36	Dixon May Fair	Dixon	Solano
IV	37	Santa Maria Fair Park	Santa Maria	Santa Barbara
IV	38	Stanislaus County Fair	Turlock	Stanislaus
II	39	Calaveras County Fair & Jumping Frog Jubilee	Angels Camp	Calaveras
II	40	Yolo County Fair	Woodland	Yolo
I	41	Del Norte County Fair	Crescent City	Del Norte
II	42	Glenn County Fair	Orland	Glenn
I	44	Colusa County Fair	Colusa	Colusa
III	45	California Mid-Winter Fair & Fiesta	Imperial	Imperial
IV	46	Farmers Fair & Festival	Perris	Riverside
II	48	Schools Involvement Fair	Walnut	Los Angeles
II	49	Lake County Fair	Lakeport	Lake

LEGEND: * = deactivated

NETWORK OF CALIFORNIA FAIRS

(By Organization ID)

Class	Org ID	Fair Organization Name	City	County
V	50	Antelope Valley Fair	Lancaster	Los Angeles
I	51	San Fernando Valley Fair	Burbank	Los Angeles
I	52	Sacramento County Fair	Sacramento	Sacramento
II	53	Desert Empire Fair	Ridgecrest	Kern
I	54	Colorado River Country Fair	Blythe	Riverside
VI	ALA	Alameda County Fair	Pleasanton	Alameda
II	BUT	Butte County Fair	Gridley	Butte
I	CLO	Cloverdale Citrus Fair	Cloverdale	Sonoma
III	EDO	El Dorado County Fair	Placerville	El Dorado
III	HUM	Humboldt County Fair	Ferndale	Humboldt
VII	LAN	Los Angeles County Fair	Pomona	Los Angeles
II	LAS	Lassen County Fair	Susanville	Lassen
I	MAD	Chowchilla-Madera County Fair	Chowchilla	Madera
III	MAR	Marin County Fair & Exposition	San Rafael	Marin
I	MEN	Mendocino County Fair & Apple Show	Boonville	Mendocino
II	MER	Merced County Spring Fair	Los Banos	Merced
III	MON	Salinas Valley Fair	King City	Monterey
III	NAP	Napa County Fair	Calistoga	Napa
VI	NOS	National Orange Show	San Bernardino	San Bernardino
III	PLA	Placer County Fair	Roseville	Placer
II	PLU	Plumas-Sierra County Fair	Quincy	Plumas
IV	RIV	Riverside County Fair & National Date Festival	Indio	Riverside
	SBE	San Benito County Saddle Horse Show	Tres Pinos	San Benito
VI	SCL	Santa Clara County Fair	San Jose	Santa Clara
I	SHA	Inter-Mountain Fair of Shasta Co	McArthur	Shasta
III	SJO	Lodi Grape Festival & Harvest Fair	Lodi	San Joaquin
IV	SMA	San Mateo County Exposition & Fair	San Mateo	San Mateo
V	SOL	Solano County Fair	Vallejo	Solano
VI	SON	Sonoma County Fair & Exposition	Santa Rosa	Sonoma
I	TRI	Trinity County Fair	Hayfork	Trinity
	XPO	California State Fair & Exposition	Sacramento	Sacramento

LEGEND: * = deactivated

NETWORK OF CALIFORNIA FAIRS

(By Class)

Class	Org ID	Fair Organization Name	City	County
I	MAD	Chowchilla-Madera County Fair	Chowchilla	Madera
I	CLO	Cloverdale Citrus Fair	Cloverdale	Sonoma
I	54	Colorado River Country Fair	Blythe	Riverside
I	44	Colusa County Fair	Colusa	Colusa
I	41	Del Norte County Fair	Crescent City	Del Norte
I	SHA	Inter-Mountain Fair of Shasta Co	McArthur	Shasta
I	MEN	Mendocino County Fair & Apple Show	Boonville	Mendocino
I	34	Modoc - The Last Frontier Fair	Cedarville	Modoc
I	52	Sacramento County Fair	Sacramento	Sacramento
I	33	San Benito County Fair	Tres Pinos	San Benito
I	51	San Fernando Valley Fair	Burbank	Los Angeles
I	05*	San Francisco Fair	San Francisco	San Francisco
I	TRI	Trinity County Fair	Hayfork	Trinity
I	10A	Tulelake-Butte Valley Fair	Tulelake	Siskiyou
II	26	Amador County Fair	Plymouth	Amador
II	BUT	Butte County Fair	Gridley	Butte
II	39	Calaveras County Fair & Jumping Frog Jubilee	Angels Camp	Calaveras
II	53	Desert Empire Fair	Ridgecrest	Kern
II	36	Dixon May Fair	Dixon	Solano
II	18	Eastern Sierra Tri-County Fair	Bishop	Inyo
II	01*	Festival at the Lake	Oakland	Alameda
II	42	Glenn County Fair	Orland	Glenn
II	20	Gold Country Fair	Auburn	Placer
II	24A	Kings District Fair	Hanford	Kings
II	49	Lake County Fair	Lakeport	Lake
II	LAS	Lassen County Fair	Susanville	Lassen
II	35A	Mariposa County Fair & Homecoming	Mariposa	Mariposa
II	MER	Merced County Spring Fair	Los Banos	Merced
II	29	Mother Lode Fair	Sonora	Tuolumne
II	PLU	Plumas-Sierra County Fair	Quincy	Plumas
II	12	Redwood Empire Fair	Ukiah	Mendocino
II	48	Schools Involvement Fair	Walnut	Los Angeles
II	10	Siskiyou Golden Fair	Yreka	Siskiyou
II	30	Tehama District Fair	Red Bluff	Tehama
II	40	Yolo County Fair	Woodland	Yolo
III	45	California Mid-Winter Fair & Fiesta	Imperial	Imperial
III	23	Contra Costa County Fair	Antioch	Contra Costa
III	EDO	El Dorado County Fair	Placerville	El Dorado
III	HUM	Humboldt County Fair	Ferndale	Humboldt
III	SJO	Lodi Grape Festival & Harvest Fair	Lodi	San Joaquin
III	21A	Madera District Fair	Madera	Madera
III	MAR	Marin County Fair & Exposition	San Rafael	Marin
III	35	Merced County Fair	Merced	Merced
III	NAP	Napa County Fair	Calistoga	Napa
III	25	Napa Town & Country Fair	Napa	Napa
III	17	Nevada County Fair	Grass Valley	Nevada
III	PLA	Placer County Fair	Roseville	Placer
III	09	Redwood Acres Fair	Eureka	Humboldt
III	MON	Salinas Valley Fair	King City	Monterey

LEGEND: * = deactivated

NETWORK OF CALIFORNIA FAIRS

(By Class)

Class	Org ID	Fair Organization Name	City	County
III	14	Santa Cruz County Fair	Watsonville	Santa Cruz
III	27	Shasta District Fair	Anderson	Shasta
III	03	Silver Dollar Fair	Chico	Butte
III	04	Sonoma-Marin Fair	Petaluma	Sonoma
III	13	Yuba-Sutter Fair	Yuba City	Sutter
IV	46	Farmers Fair & Festival	Perris	Riverside
IV	07	Monterey County Fair	Monterey	Monterey
IV	RIV	Riverside County Fair & National Date Festival	Indio	Riverside
IV	28	San Bernardino County Fair	Victorville	San Bernardino
IV	SMA	San Mateo County Exposition & Fair	San Mateo	San Mateo
IV	19	Santa Barbara Fair & Exposition	Santa Barbara	Santa Barbara
IV	37	Santa Maria Fair Park	Santa Maria	Santa Barbara
IV	38	Stanislaus County Fair	Turlock	Stanislaus
IV	24	Tulare County Fair	Tulare	Tulare
V	50	Antelope Valley Fair	Lancaster	Los Angeles
V	16	California Mid-State Fair	Paso Robles	San Luis Obispo
V	15	Kern County Fair	Bakersfield	Kern
V	02	San Joaquin County Fair	Stockton	San Joaquin
V	SOL	Solano County Fair	Vallejo	Solano
V	31	Ventura County Fair	Ventura	Ventura
VI	ALA	Alameda County Fair	Pleasanton	Alameda
VI	21	Big Fresno Fair	Fresno	Fresno
VI	01A	Cow Palace	Daly City	San Francisco
VI	NOS	National Orange Show	San Bernardino	San Bernardino
VI	SCL	Santa Clara County Fair	San Jose	Santa Clara
VI	SON	Sonoma County Fair & Exposition	Santa Rosa	Sonoma
VII	22	San Diego County Fair	Del Mar	San Diego
VII	LAN	Los Angeles County Fair	Pomona	Los Angeles
VII	32	Orange County Fair	Costa Mesa	Orange
	SBE	San Benito County Saddle Horse Show	Tres Pinos	San Benito
	XPO	California State Fair & Exposition	Sacramento	Sacramento

LEGEND: * = deactivated

NETWORK OF CALIFORNIA FAIRS

(By County)

Class	Org ID	Fair Organization Name	City	County
VI	ALA	Alameda County Fair	Pleasanton	Alameda
II	01*	Festival at the Lake	Oakland	Alameda
II	26	Amador County Fair	Plymouth	Amador
II	BUT	Butte County Fair	Gridley	Butte
III	03	Silver Dollar Fair	Chico	Butte
II	39	Calaveras County Fair & Jumping Frog Jubilee	Angels Camp	Calaveras
I	44	Colusa County Fair	Colusa	Colusa
III	23	Contra Costa County Fair	Antioch	Contra Costa
I	41	Del Norte County Fair	Crescent City	Del Norte
III	EDO	El Dorado County Fair	Placerville	El Dorado
VI	21	Big Fresno Fair	Fresno	Fresno
II	42	Glenn County Fair	Orland	Glenn
III	HUM	Humboldt County Fair	Ferndale	Humboldt
III	09	Redwood Acres Fair	Eureka	Humboldt
III	45	California Mid-Winter Fair & Fiesta	Imperial	Imperial
II	18	Eastern Sierra Tri-County Fair	Bishop	Inyo
II	53	Desert Empire Fair	Ridgecrest	Kern
V	15	Kern County Fair	Bakersfield	Kern
II	24A	Kings District Fair	Hanford	Kings
II	49	Lake County Fair	Lakeport	Lake
II	LAS	Lassen County Fair	Susanville	Lassen
V	50	Antelope Valley Fair	Lancaster	Los Angeles
VII	LAN	Los Angeles County Fair	Pomona	Los Angeles
I	51	San Fernando Valley Fair	Burbank	Los Angeles
II	48	Schools Involvement Fair	Walnut	Los Angeles
I	MAD	Chowchilla-Madera County Fair	Chowchilla	Madera
III	21A	Madera District Fair	Madera	Madera
III	MAR	Marin County Fair & Exposition	San Rafael	Marin
II	35A	Mariposa County Fair & Homecoming	Mariposa	Mariposa
I	MEN	Mendocino County Fair & Apple Show	Boonville	Mendocino
II	12	Redwood Empire Fair	Ukiah	Mendocino
III	35	Merced County Fair	Merced	Merced
II	MER	Merced County Spring Fair	Los Banos	Merced
I	34	Modoc - The Last Frontier Fair	Cedarville	Modoc
IV	07	Monterey County Fair	Monterey	Monterey
III	MON	Salinas Valley Fair	King City	Monterey
III	NAP	Napa County Fair	Calistoga	Napa
III	25	Napa Town & Country Fair	Napa	Napa
III	17	Nevada County Fair	Grass Valley	Nevada
VII	32	Orange County Fair	Costa Mesa	Orange
II	20	Gold Country Fair	Auburn	Placer
III	PLA	Placer County Fair	Roseville	Placer
II	PLU	Plumas-Sierra County Fair	Quincy	Plumas
I	54	Colorado River Country Fair	Blythe	Riverside
IV	46	Farmers Fair & Festival	Perris	Riverside
IV	RIV	Riverside County Fair & National Date Festival	Indio	Riverside
	XPO	California State Fair & Exposition	Sacramento	Sacramento
I	52	Sacramento County Fair	Sacramento	Sacramento
I	33	San Benito County Fair	Tres Pinos	San Benito

LEGEND: * = deactivated

NETWORK OF CALIFORNIA FAIRS

(By County)

Class	Org ID	Fair Organization Name	City	County
	SBE	San Benito County Saddle Horse Show	Tres Pinos	San Benito
VI	NOS	National Orange Show	San Bernardino	San Bernardino
IV	28	San Bernardino County Fair	Victorville	San Bernardino
VII	22	San Diego County Fair	Del Mar	San Diego
VI	01A	Cow Palace	Daly City	San Francisco
I	05*	San Francisco Fair	San Francisco	San Francisco
III	SJO	Lodi Grape Festival & Harvest Fair	Lodi	San Joaquin
V	02	San Joaquin County Fair	Stockton	San Joaquin
V	16	California Mid-State Fair	Paso Robles	San Luis Obispo
IV	SMA	San Mateo County Exposition & Fair	San Mateo	San Mateo
IV	19	Santa Barbara Fair & Exposition	Santa Barbara	Santa Barbara
IV	37	Santa Maria Fair Park	Santa Maria	Santa Barbara
VI	SCL	Santa Clara County Fair	San Jose	Santa Clara
III	14	Santa Cruz County Fair	Watsonville	Santa Cruz
I	SHA	Inter-Mountain Fair of Shasta Co	McArthur	Shasta
III	27	Shasta District Fair	Anderson	Shasta
II	10	Siskiyou Golden Fair	Yreka	Siskiyou
I	10A	Tulelake-Butte Valley Fair	Tulelake	Siskiyou
II	36	Dixon May Fair	Dixon	Solano
V	SOL	Solano County Fair	Vallejo	Solano
I	CLO	Cloverdale Citrus Fair	Cloverdale	Sonoma
VI	SON	Sonoma County Fair & Exposition	Santa Rosa	Sonoma
III	04	Sonoma-Marin Fair	Petaluma	Sonoma
IV	38	Stanislaus County Fair	Turlock	Stanislaus
III	13	Yuba-Sutter Fair	Yuba City	Sutter
II	30	Tehama District Fair	Red Bluff	Tehama
I	TRI	Trinity County Fair	Hayfork	Trinity
IV	24	Tulare County Fair	Tulare	Tulare
II	29	Mother Lode Fair	Sonora	Tuolumne
V	31	Ventura County Fair	Ventura	Ventura
II	40	Yolo County Fair	Woodland	Yolo

LEGEND: * = deactivated

NETWORK OF CALIFORNIA FAIRS

(By City)

Class	Org ID	Fair Organization Name	City	County
III	27	Shasta District Fair	Anderson	Shasta
II	39	Calaveras County Fair & Jumping Frog Jubilee	Angels Camp	Calaveras
III	23	Contra Costa County Fair	Antioch	Contra Costa
II	20	Gold Country Fair	Auburn	Placer
V	15	Kern County Fair	Bakersfield	Kern
II	18	Eastern Sierra Tri-County Fair	Bishop	Inyo
I	54	Colorado River Country Fair	Blythe	Riverside
I	MEN	Mendocino County Fair & Apple Show	Boonville	Mendocino
I	51	San Fernando Valley Fair	Burbank	Los Angeles
III	NAP	Napa County Fair	Calistoga	Napa
I	34	Modoc - The Last Frontier Fair	Cedarville	Modoc
III	03	Silver Dollar Fair	Chico	Butte
I	MAD	Chowchilla-Madera County Fair	Chowchilla	Madera
I	CLO	Cloverdale Citrus Fair	Cloverdale	Sonoma
I	44	Colusa County Fair	Colusa	Colusa
VII	32	Orange County Fair	Costa Mesa	Orange
I	41	Del Norte County Fair	Crescent City	Del Norte
VI	01A	Cow Palace	Daly City	San Francisco
VII	22	San Diego County Fair	Del Mar	San Diego
II	36	Dixon May Fair	Dixon	Solano
III	09	Redwood Acres Fair	Eureka	Humboldt
III	HUM	Humboldt County Fair	Ferndale	Humboldt
VI	21	Big Fresno Fair	Fresno	Fresno
III	17	Nevada County Fair	Grass Valley	Nevada
II	BUT	Butte County Fair	Gridley	Butte
II	24A	Kings District Fair	Hanford	Kings
I	TRI	Trinity County Fair	Hayfork	Trinity
III	45	California Mid-Winter Fair & Fiesta	Imperial	Imperial
IV	RIV	Riverside County Fair & National Date Festival	Indio	Riverside
III	MON	Salinas Valley Fair	King City	Monterey
II	49	Lake County Fair	Lakeport	Lake
V	50	Antelope Valley Fair	Lancaster	Los Angeles
III	SJO	Lodi Grape Festival & Harvest Fair	Lodi	San Joaquin
II	MER	Merced County Spring Fair	Los Banos	Merced
III	21A	Madera District Fair	Madera	Madera
II	35A	Mariposa County Fair & Homecoming	Mariposa	Mariposa
I	SHA	Inter-Mountain Fair of Shasta Co	McArthur	Shasta
III	35	Merced County Fair	Merced	Merced
IV	07	Monterey County Fair	Monterey	Monterey
III	25	Napa Town & Country Fair	Napa	Napa
II	01*	Festival at the Lake	Oakland	Alameda
II	42	Glenn County Fair	Orland	Glenn
V	16	California Mid-State Fair	Paso Robles	San Luis Obispo
IV	46	Farmers Fair & Festival	Perris	Riverside
III	04	Sonoma-Marin Fair	Petaluma	Sonoma
III	EDO	El Dorado County Fair	Placerville	El Dorado
VI	ALA	Alameda County Fair	Pleasanton	Alameda
II	26	Amador County Fair	Plymouth	Amador
VII	LAN	Los Angeles County Fair	Pomona	Los Angeles

LEGEND: * = deactivated

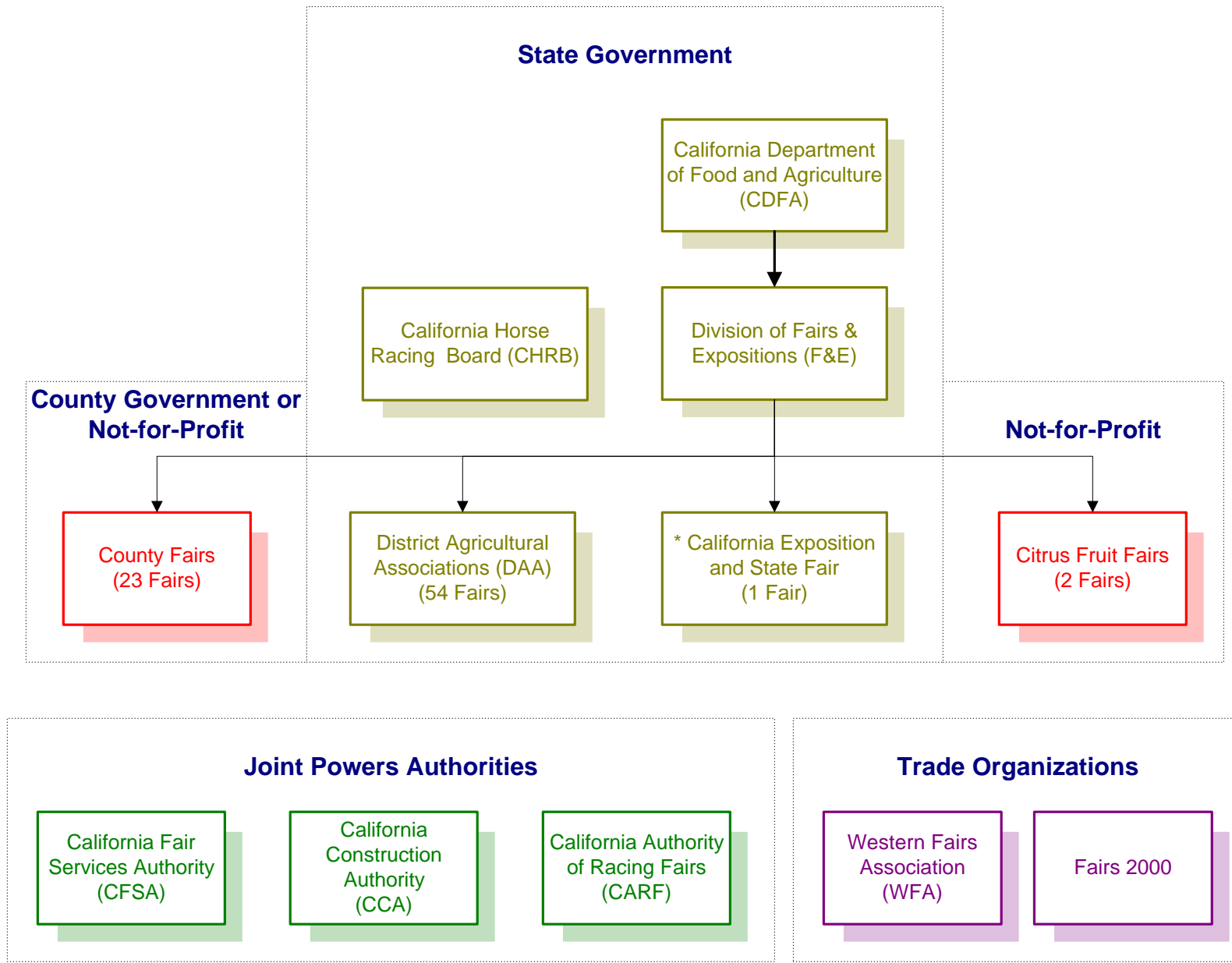
NETWORK OF CALIFORNIA FAIRS

(By City)

Class	Org ID	Fair Organization Name	City	County
II	PLU	Plumas-Sierra County Fair	Quincy	Plumas
II	30	Tehama District Fair	Red Bluff	Tehama
II	53	Desert Empire Fair	Ridgecrest	Kern
III	PLA	Placer County Fair	Roseville	Placer
	XPO	California State Fair & Exposition	Sacramento	Sacramento
I	52	Sacramento County Fair	Sacramento	Sacramento
VI	NOS	National Orange Show	San Bernardino	San Bernardino
I	05*	San Francisco Fair	San Francisco	San Francisco
VI	SCL	Santa Clara County Fair	San Jose	Santa Clara
IV	SMA	San Mateo County Exposition & Fair	San Mateo	San Mateo
III	MAR	Marin County Fair & Exposition	San Rafael	Marin
IV	19	Santa Barbara Fair & Exposition	Santa Barbara	Santa Barbara
IV	37	Santa Maria Fair Park	Santa Maria	Santa Barbara
VI	SON	Sonoma County Fair & Exposition	Santa Rosa	Sonoma
II	29	Mother Lode Fair	Sonora	Tuolumne
V	02	San Joaquin County Fair	Stockton	San Joaquin
II	LAS	Lassen County Fair	Susanville	Lassen
I	33	San Benito County Fair	Tres Pinos	San Benito
	SBE	San Benito County Saddle Horse Show	Tres Pinos	San Benito
IV	24	Tulare County Fair	Tulare	Tulare
I	10A	Tulelake-Butte Valley Fair	Tulelake	Siskiyou
IV	38	Stanislaus County Fair	Turlock	Stanislaus
II	12	Redwood Empire Fair	Ukiah	Mendocino
V	SOL	Solano County Fair	Vallejo	Solano
V	31	Ventura County Fair	Ventura	Ventura
IV	28	San Bernardino County Fair	Victorville	San Bernardino
II	48	Schools Involvement Fair	Walnut	Los Angeles
III	14	Santa Cruz County Fair	Watsonville	Santa Cruz
II	40	Yolo County Fair	Woodland	Yolo
II	10	Siskiyou Golden Fair	Yreka	Siskiyou
III	13	Yuba-Sutter Fair	Yuba City	Sutter

LEGEND: * = deactivated

Organizational Relationship



* California Exposition and State Fair is a state agency.

LETTERS OF SUPPORT

Letters in support of the 2002/2003 Expenditure Plan were received from the organizations listed below.

- Western Fairs Association (WFA)
- California Fairs Alliance (CFA)
- California Authority of Racing Fairs (CARF)
- 2nd DAA – San Joaquin County Fair
- 4th DAA – Sonoma-Marín Fair
- 7th DAA – Monterey County Fair
- 14th DAA – Santa Cruz County Fair
- 17th DAA – Nevada County Fair
- 18th DAA – Eastern Sierra Tri-County Fair
- 21st DAA – The Big Fresno Fair
- 22nd DAA – San Diego County Fair
- 27th DAA – Shasta District Fair
- 32nd DAA – Orange County Fair
- 38th DAA – Stanislaus County Fair
- 40th DAA – Yolo County Fair
- 48th DAA – Schools Involvement Fair
- 49th DAA – Lake County Fair
- Cloverdale Citrus Fair
- Lodi Grape Festival & Harvest Fair
- Los Angeles County Fair
- Trinity County Fair

**NETWORK OF CALIFORNIA FAIRS
2002/2003 EXPENDITURE PLAN**



**WESTERN FAIRS
ASSOCIATION**

1776 Tribute Road, Suite 210
Sacramento, CA 95815-4495
916 927-3100 • Fax: 916 927-6397
Voice Mail: 916 535-7835
Web Site: www.fairsnet.org
E-mail: wfa@fairsnet.org

May 1, 2002

William J. Lyons, Jr., Secretary
CA Department of Food and Agriculture
1220 N. Street, Room 409
Sacramento, CA 95814

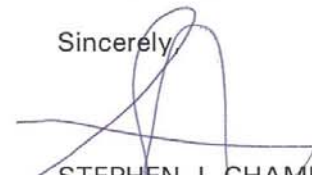
Dear Secretary Lyons:

As the Executive Director of Western Fairs Association and Secretary of the California Fairs Alliance, I want to share my support for your 2002-03 Expenditure Plan for fair funding. Fairs have a very diverse set of needs and challenges. Fair budgets range from under \$200,000 to over \$40 million and serve communities from Del Norte to Del Mar. Developing a plan that addresses these diverse demands is a difficult task and your agency has done an outstanding job.

The 2002-2003 plan provides the flexibility and local autonomy necessary to support creativity and strong business practices while insuring that the funds integrity and accountability are protected. This plan represents the third year of your administration's commitment to sound policy development and implementation and I greatly respect your efforts on behalf of our state's fairs.

I must conclude by mentioning how much your team at F & E has embraced the "open door" policy you established when you became Secretary. I believe that Director Houser and her staff are the most open, accessible and responsive in my 20 years as a fair industry executive. Thank you again for your fine work.

Sincerely,



STEPHEN J. CHAMBERS
Executive Director

SJC/emw

2002 CFA Board of Directors

Co-chairs:

Ed Scofield

CEO, Nevada County Fair

Stuart Titus

CEO, Humboldt County Fair

Members:

CASCADE AREA

Bill Long

Fair Director, Plumas-Sierra County Fair

Rebecca Weathers

CEO, Siskiyou Golden Fair

CENTRAL COASTAL AREA

Judy Hostetter

Fair Director, Salinas Valley Fair

Michele Wakeham

CEO, Monterey County Fair

MOTHER LODGE AREA

Lowell Munn

Fair Director, Mariposa County Fair

Linda Sinclair

CEO, Mariposa County Fair

NORTH COASTAL AREA

Randy Hatfield

CEO, Del Norte County Fair

Jim Mickelson

Fair Director, Sonoma-Marin Fair

SACRAMENTO VALLEY AREA

Pat Conklin

CEO, Butte County Fair & Exposition

Rebecca Barnes-Lipman

Fair Director, Solano County Fair

SAN JOAQUIN AREA

Mark Armstrong

CEO, Lodi Grape Festival

SOUTHERN AREA

Bill Blair

CEO, CA Mid-Winter Fair & Fiesta

Manny Hinojos

Fair Director, San Bernardino County Fair

Staff:

George Soares, Advocate

Kahn, Soares, & Conway
916/448-3826

Stephen J. Chambers, Secretary

E-mail: stephenc@fairsnet.org

1776 Tribute Road, Suite 210
Sacramento, CA 95815-4495
916/927-3100, Fax 916/927-6397
E-mail: wfa@fairsnet.org
Web site: www.fairsnet.org

California Fairs Alliance

May 1, 2002

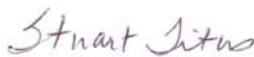
Department of Food and Agriculture
Secretary William J. Lyons
1220 N. Street #409
Sacramento, CA 95814

Dear Secretary Lyons:

On behalf of California's network of agricultural fairs, we wish to express our support for your 2002-03 Expenditure Plan for fair funds. The plan, as presented, will help support and sustain the important benefits that all Californian's receive from our states 78 fairs and 76 fair facilities.

As Co-Chairs of the California Fairs Alliance, we conducted a meeting in Sacramento on March 22 and discussed the draft plan. All California Fairs were invited and it was the strong consensus of the Alliance to support the leadership your agency has taken with fair funding over the past two budget cycles.

The partnership established in 1933 that directs horse racing license fees to support fairs continues to be an important factor in the success of our network. We commend you and your entire team for your commitment to sound policy driven expenditure plans that give all fairs equal opportunities. We look forward to sharing our support positions with the Joint Fairs Committee and thank you for your work on our behalf.



Stuart Titus
CEO, Humboldt County Fair



Ed Scofield
CEO, Nevada County Fair

cc: California Fairs
Joint Fairs Committee

Representing California's Finest Agricultural Fairs

A subsidiary of the Western Fairs Association

**NETWORK OF CALIFORNIA FAIRS
2002/2003 EXPENDITURE PLAN**



a California joint powers agency
1776 Tribute Road, Suite 150
Sacramento, California 95815
Office: 916.927.7223 • Fax: 916.263.3341
www.racingfairs.org

Member Fairs

ALAMEDA COUNTY FAIR
Pleasanton, CA
ANTELOPE VALLEY FAIR
Lancaster, CA
CALIFORNIA STATE FAIR
Sacramento, CA
DEL MAR FAIR
Del Mar, CA
EARL WARREN SHOWGROUNDS
Santa Barbara, CA
FARMERS FAIR & EXPOSITION
Perris, CA
THE BIG FRESNO FAIR
Fresno, CA
HUMBOLDT COUNTY FAIR
Ferndale, CA
KERN COUNTY FAIR
Bakersfield, CA
MONTEREY COUNTY FAIR
Monterey, CA
NATIONAL DATE FESTIVAL
Indio, CA
NATIONAL ORANGE SHOW
San Bernardino, CA
REDWOOD ACRES FAIR
Eureka, CA
SAN BERNARDINO COUNTY FAIR
Victorville, CA
SAN JOAQUIN COUNTY FAIR
Stockton, CA
SAN MATEO COUNTY FAIR
San Mateo, CA
SANTA BARBARA COUNTY FAIR
Santa Maria, CA
SHASTA DISTRICT FAIR
Anderson, CA
SOLANO COUNTY FAIR
Vallejo, CA
SONOMA COUNTY FAIR
Santa Rosa, CA
STANISLAUS COUNTY FAIR
Turlock, CA
TULARE COUNTY FAIR
Tulare, CA
VENTURA COUNTY FAIR
Ventura, CA

April 30, 2002

Mr. Bill Lyons, Secretary
California Department of Food and Agriculture
1220 N St.
Sacramento, CA 95825

Dear Secretary Lyons,

The California Authority of Racing Fairs wishes to express its support of the Expenditure Plan proposed by the Division of Fairs and Expositions for FY 2002-2003. Our organization represents twenty-three Fairs at which simulcasting is conducted and nine Fairs at which live horse racing is conducted.

The \$3 million allocation proposed in this Plan is very important to our organization and to our member Fairs. If approved, the funds will allow us to continue improving backstretch working conditions, per legislative mandate, and to continue our Race Track Safety and Maintenance Program.

We would also express our thanks for the effort that you and your staff have made to include us in your considerations. We appreciate the strong and cordial working relationship that we have with the Department of Food and Agriculture and the Division of Fairs and Expositions. Your support and encouragement means a great deal to our member Fairs.

Respectfully submitted,

Christopher Korby
Executive Director

cc: Elizabeth Houser

SAN JOAQUIN
FAIR
JUNE 12-23, 2002

May 1, 2002

William (Bill) J. Lyons, Jr., Secretary
California Department of Food & Agriculture
c/o Division of Fairs & Expositions
1010 Hurley Way, Suite 200
Sacramento, CA 95825

Dear Mr. Lyons:

The San Joaquin Fair (2nd D.A.A.) is writing in support of the 2002/03 expenditure plan to benefit the network of California fairs. It is critical that the \$40 million programmed in this plan continue to be utilized to benefit California's fairs. These funds are derived entirely from a licensing fee assessed on gaming on horse racing. With nine live racing fairs and 23 satellite wagering facilities, California's fairs play a key role in delivering the horse racing product to the citizens of the State.

As you can see from the expenditure plan, the 80 fairs in the State put these funds to good use to benefit their local communities. Without these funds, vital health and safety and infrastructure improvements would not be possible at many fairs. Our fair has utilized funds programmed in prior expenditure plans to renovate the horse racing backside which has become a high profile subject of the legislatures. Without these funds, these improvements would of had to wait or be done on a much smaller scale. The C.H.R.B. is happy with our progress and looks forward to future improvements which will bring the fair in total compliance with the law.

The San Joaquin Fair (2nd D.A.A.) is very pleased with the direction and support we have received from the Division of Fairs & Expositions and the Department of Food and Agriculture the last three years.

Sincerely,



Forrest J. White, C.E.O.



May 1, 2002

William (Bill) J. Lyons, Jr. Secretary
California Department of Food & Agriculture
c/o Division of Fairs & Expositions
1010 Hurley Way, Suite 200
Sacramento, CA 95825

Dear Secretary Lyons,

As the CEO of the Sonoma-Marin Fair, Petaluma, I express my support and applaud the efforts of your staff in developing a functional and comprehensive 2002/03 Expenditure Plan. The 80 California Fairs throughout the state provide an immeasurable benefit to the communities they serve in several areas, especially in agriculture education and youth development. Without these vital funds, derived entirely from California's horse racing revenues, the fairs could not deliver the quality product and self-esteem-building programs they offer to over 24 million fair patrons and participants annually.

A large portion of these funds goes directly to health and safety improvements that effect the infrastructure at our fair facilities. In addition, \$2 million is proposed in local funding for ADA related capital improvement projects. In the last few years, we have utilized capital improvement and ADA funds to improve the handicapped accessibility to all our public restrooms, provided ramps to allow wheelchair access to our stage area and developed sidewalks and building entrances to accommodate all our guests. Further, we have enhanced our primary electrical service throughout the majority of our facility, making it safer and more efficient.

I would also like to commend the Department of Food & Agriculture and the Division of Fairs & Expositions for maintaining the Millennium Flex Program, an expenditure line item developed last year. This program has allowed the fairs the flexibility they need to use state funds for improvements or purchases that are determined at the local level to be of the highest priority. As part of our 2001/02 Millennium Flex program funds, we were able to purchase a new forklift and start work on a Master Plan. These two projects were identified by the board and staff

175 FAIRGROUNDS DRIVE, PETALUMA, CA 94952
707-283-FAIR (3247) FAX 707-283-3250
Email: info@sonoma-marinfair.org
Website: <http://www.sonoma-marinfair.org>



**NETWORK OF CALIFORNIA FAIRS
2002/2003 EXPENDITURE PLAN**

as critical to the future of the Association, but were previously unattainable because of their cost.

Again, your vision in developing the 2002/03 Revenue and Expenditure Plan is appreciated, and I thank you for your continued interest in the future of California fairs. Should you have any questions, or would like to discuss my support of the 2002/03 Expenditure Plan in more detail, please do not hesitate to contact me.

Sincerely,



Tawny Tesconi
Chief Executive Officer



May 1, 2002

Mr. William J. Lyons, Jr., Secretary
California Department of Food & Agriculture
C/O Division of Fairs & Expositions
1010 Hurley Way, Suite 200
Sacramento, CA 95825

Dear Secretary Lyons,

On behalf of the Monterey County Fair, I am writing in support of the 2002-2003 expenditure plan which is of great benefit to the California fairs. It is critical to fairs that they receive the \$40 million programmed in this plan. Since these funds are derived entirely from a licensing fee assessed on horse racing, the expenditure plan is not a burden to the general fund. As you are well aware, there 9 live racing fairs and 23 satellite wagering facilities that generate the funds to be allocated in the expenditure plan. California's fairs have long played a historic role in delivering the horse racing product to the citizens of California. My understanding is that it is because of the California network of local community fairs that horse racing was legalized in our state.

The 80 fairs in the state that provide great benefit and service to their local communities need these funds. Without these funds, vital health and safety and infrastructure improvements would not be possible at many fairs. Our fair has utilized funds programmed in prior expenditure plans to pave walkways throughout the grounds to make the fair more accessible to Americans with disabilities or those with special needs. Other ADA improvements have included improvements to make restrooms handicap accessible, improved doors and hardware, installation of signage and ramps to our buildings and barn areas. We have used Major Maintenance funding to upgrade dangerous electrical conditions, reroof buildings that were in dire condition, and renovate the Monterey Room.

2004 Fairground Road, Monterey, California 93940
831-372-5863 FAX 831-372-8248

**NETWORK OF CALIFORNIA FAIRS
2002/2003 EXPENDITURE PLAN**

The Monterey County Fair is very pleased with direction and support we have received from the Division of Fairs & Expositions and Department of Food and Agriculture both historically and in the recent past. This fair was virtually insolvent seven years ago. The Division of Fairs and Expositions worked with the staff and Board of Directors to return this fair to fiscal health. We now enjoy a substantial reserve balance and paid in full a loan that we received from the State.

Both you and Liz Houser made me feel very comfortable as a new CEO at the Monterey County Fair. I received a warm welcome and orientation from Liz and her staff. The fiscal oversight of the Division and the flexibility of the Millennium Flex funding lend tremendous support to the success of California fairs.

Very truly yours,



Michele Wakeham
CEO/Manager

2004 Fairground Road, Monterey, California 93940
831-372-5863 FAX 831-372-8248

**NETWORK OF CALIFORNIA FAIRS
2002/2003 EXPENDITURE PLAN**



May 1, 2002

William (Bill) J. Lyons, Secretary
California Department of Food & Agriculture
C/o Division of Fairs and Expositions
1010 Hurley Way, Suite 200
Sacramento, CA 95825

Dear Secretary Lyons:

The Santa Cruz County Fair is writing in support of the 2002/2003 expenditure plan to benefit the network of California Fairs. It is critical that the \$40 million programmed in this plan continue to be utilized to benefit California's Fairs. These funds are derived entirely from a licensing fee assessed on gaming on horse racing. With nine live racing fairs and twenty-three satellite wagering facilities, California's Fairs play a key role in delivering the horseracing product to the citizens of our State.

As you can see from the expenditure plan, the eighty fairs in the State put these funds to good use to benefit their local communities. Without these funds, vital health and safety, and infrastructure improvements would not be possible at many fairs. Our fair in just the past year has utilized funds programmed in prior expenditure plans to finally hook the fairgrounds sewer lines up to public service; upgrade a large portion of outdated and dangerous high voltage electrical lines; upgrade all of our exhibit building restrooms to comply with ADA standards; and re-roof our largest exhibit hall. As you can see, all of these projects have a major impact on our ability to keep our Fairgrounds safe, and accessible to our community.

The Santa Cruz County Fair is very pleased with the direction and support we have received from the Division of Fairs and Expositions and the Department of Food and Agriculture the past two years. As a relatively new CEO, and with several recently appointed Directors, the support and guidance offered by these agencies are essential to the productivity, functionality and spirit of the 14th District Agriculture Association.

I very much appreciate the support and efforts you provide to the California Fairs.

Sincerely,

A handwritten signature in blue ink that reads "Judith Panick". The signature is fluid and cursive.

Judith Panick
Chief Executive Officer

Copy: 14th DAA Board of Directors

14TH DISTRICT AGRICULTURAL ASSOCIATION

2601 East Lake Avenue • Watsonville, CA 95076 • voice: 831-724-5671 • fax: 831-761-5827 • www.santacruzcountyfair.com

**NETWORK OF CALIFORNIA FAIRS
2002/2003 EXPENDITURE PLAN**



17TH DISTRICT AGRICULTURAL ASSOCIATION
P.O. Box 2687
GRASS VALLEY, CA 95945
(530) 273-6217 • FAX (530) 273-1146
ncfair@oro.net
www.nevadacountyfair.com

May 1, 2002

William J. Lyons, Jr., Secretary
California Department of Food & Agriculture
C/o Division of Fairs & Expositions
1010 Hurley Way, Suite 200
Sacramento, CA 95825

The Nevada County Fair is writing in support of the 2002/03 expenditure plan to benefit the network of California Fairs. It is critical that the \$40, million programmed in this plan continue to be utilized to benefit California's fairs.

As you can see, from the expenditure plan, the 80 fairs in the State put these funds to good use to benefit their local communities. The Nevada County Fair strives to see that any money derived from the F&E fund is utilized for capital improvement, major maintenance, equipment or revenue generating projects. In recent years the Fair has completed a community partnership which converted our main exhibit building into a classical concert hall, while still allowing us to continue to use the building for traditional fair events. This project was a \$1.2 million project that not only enhanced our bond with our community, but also raised our revenues by \$35,000 in the first year. We have also upgraded our electrical system by installing new underground lines that eliminated aging utility poles, and prevents down lines during snowstorms. We have expanded and upgraded our computer system in order to make our operation more efficient, and included new maintenance equipment making operations safer and again more efficient. Currently the fair is replacing it's large arena to insure the safety of spectators during events such as the Draft Horse Classic; as well as, creating a new drainage system to meet State requirements on water safety.

The Nevada County Fair is very pleased with the direction and support we have received from the Division of Fairs & Expositions and the Department of Food & Agriculture. In the three years of this administration, there has been a strong effort to work closely with the fairs, and to see that funds make it to the local level where they are best utilized by each individual fair.

I would like to offer a personal thanks to Secretary Lyons, and Director Houser for their support of the Nevada County Fair.

Sincerely


Edward C. Scofield, CEO

"California's Most Beautiful Fairgrounds"



William (Bill) Lyons, Jr., Secretary
California Department of Food & Agriculture
C/O Division of Food & Agriculture
1010 Hurley Way, Suite 200
Sacramento, Ca 95825

May 3, 2002

Dear Secretary Lyons:

The Eastern Sierra Tri-County Fairgrounds/ 18th District Agricultural Association is writing to you today to express our support of the proposed 2002-2003 expenditure plan. We believe that it is critical that the \$40 million programmed in this plan continue to be utilized to benefit California's Fairs. These funds are derived entirely from a licensing fee assessed on gaming on horse racing. With 9 live racing fairs and 23 satellite wagering facilities, California's Fairs play a key role in delivering the horse racing product to the citizens of the State.

As you can see from the proposed expenditure plan, the 80 fairs in the State utilize these funds to benefit their local communities. Without these funds, vital health and safety and infrastructure improvements would not be possible at many fairs. Our fair has utilized funds programmed in prior expenditure plans to make substantial improvements in our facility. Significant safety improvements have been made in our buildings, barns and grounds. Additionally, the funds have allowed the 18th District Agricultural Association to continue projects related to ADA compliance, allowing us to better serve disabled patrons. Over the past several years, the 18th DAA has spent in excess of \$500,000 on facility improvements which would not have been possible without the money received from the F&E Fund. The Eastern Sierra Tri-County Fairgrounds is very important to the residents of Inyo, Mono and Alpine Counties. Each year, the fairgrounds hosts hundreds of social gatherings, business meetings, service club functions, youth events, sports and other affairs. We are quite proud to say that the Eastern Sierra Tri-County Fairgrounds plays an important role to the economic and social well being of our communities.

The Eastern Sierra Tri-County Fairgrounds is very pleased with the direction and continuing support we have received from the Division of Fairs and Expositions and the Department of Food and Agriculture. Once again, thank you for your continuing support of California's Fairs.

Sincerely,

Jim Tatum, CEO
Eastern Sierra Tri-County Fairgrounds
18th District Agricultural Association

Sierra Street & Fair Drive · P.O. Box 608 · Bishop · CA · 93515
(760) 873-3588 · Fax (760) 873-8874 · Email: tricity@qnet.com
www.tricityfair.com

**NETWORK OF CALIFORNIA FAIRS
2002/2003 EXPENDITURE PLAN**



May 8, 2002

**Mr. William (Bill) J. Lyons, Jr., Secretary
California Department of Food & Agriculture
c/o Division of Fairs & Expositions
1010 Hurley Way, Suite 200
Sacramento, CA 95825**

Dear Secretary Lyons,

The 21st District Agricultural Association (dba. The Big Fresno Fair), is writing in support of the 2002/03 expenditure plan to benefit the network of California fairs. It is critical that the \$40 million programmed in this plan continue to be utilized to benefit California's fairs. These funds are derived entirely from a licensing fee assessed on gaming on horse racing. With 9 live racing fairs and 23 satellite wagering facilities, California's fairs play a key role in delivering the horse racing product to the citizens of this State.

As you can see from the expenditure plan, the 80 fairs in the State put these funds to good use to benefit our local communities. Without these funds, vital health and safety and infrastructure improvements would not be possible at many fairs. Our fair has utilized funds programmed in prior expenditure plans to complete major maintenance plans which have included a complete renovation of an antiquated 4160 electrical system into a 12 KVA system which will provide power to our fair for decades to come. Further, the 21st DAA has reroofed 80% of the buildings on our grounds, repaved/resealed nearly 20 acres of asphalt, made the entrance doors to our exhibit buildings ADA compliant, added 260 trees and 1,500 oleanders to our grounds. Also, we are thrilled to have completed, prior to the 2001 Fair, a \$2 million, 3.5 acre renovation of our fairgrounds which was inclusive of the demolition of a 35,000 square foot building, a complete revamp of the water, sewer, storm, and power infrastructure, water features, grass, trees, colored concrete walkways, and a bandstand/gazebo-type centerpiece which now showcases our community stage during fairtime. This is the largest enhancement our fairgrounds has seen in the last sixty years. None of this could have been possible without the assistance and commitment of the Department of Fairs & Expositions and the California Construction Authority.

The 21st DAA is very pleased with the direction and support we have received from the Division of Fairs & Expositions and the Department of Food & Agriculture over the last three years. Without their support and direction, the 21st DAA could never have achieved the successes we have seen over the last three years and plan to continue to improve on these in the future.

Respectfully,

Scott J. Anderson
Chief Executive Officer

1121 S. Chance Avenue Fresno, California 93702-3707 559 650-3247 FAX 559 650-3226 www.fresnofair.com

••••• 21st DISTRICT AGRICULTURAL ASSOCIATION •••••

An Equal Opportunity Employer

**NETWORK OF CALIFORNIA FAIRS
2002/2003 EXPENDITURE PLAN**



22ND DISTRICT AGRICULTURAL ASSOCIATION
State of California

May 1, 2002

William (Bill) J. Lyons, Jr., Secretary
California Department of Food & Agriculture
c/o Division of Fairs & Expositions
1010 Hurley Way, Suite 200
Sacramento, CA 95825

Dear Secretary Lyons,

I'm writing on behalf of the Del Mar Fairgrounds in support of the 2002/03 expenditure plan to benefit the network of California fairs. It's crucial that the \$40 million programmed for this plan continue to be allocated to benefit California's fairs. These funds are derived entirely from a licensing fee assessed on gaming on horse racing. With 9 live racing fairs and 23 satellite wagering facilities, California fairs play a key role in delivering the horse racing product, creating much-needed jobs and stimulating the local economy.

The 80 fairs in the State put these funds to good use to benefit their local communities, and without these funds, vital health and safety and infrastructure improvements would not be possible at many fairs. Recently our fairgrounds has utilized funds to renovate a portion of our main track, improving the safety of the surface for the betterment of racing at Del Mar (\$305,000); backstretch health and safety improvements including additional housing for horse racing and fairtime carnival employees (\$125,000); and replacement of fire alarm systems, much needed for the safety of both backstretch employees and 2,400 equines housed on our grounds during the live horse race meet (\$175,000).

The Del Mar Fairgrounds is very pleased with the direction and support we have received from the Division of Fairs & Expositions and the Department of Food & Agriculture. With their help, the Del Mar Fairgrounds continues to contribute more than \$300 million annually in economic activity to the local community.

Sincerely,

Timothy J. Fennell
CEO/General Manager

TJF:mlh

2260 Jimmy Durante Boulevard • Del Mar, California 92014-2216
TELEPHONE: 858/755-1161 • FAX: 858/755-7820
<http://www.delmarfair.com/dmfinfo>



May 1, 2002

Mr. William (Bill) J. Lyons, Jr., Secretary
California Department of Food & Agriculture
C/O Division of Fairs & Expositions
1010 Hurley Way, Suite 200
Sacramento, CA 95825

Dear Secretary Lyons:

The Shasta District Fair is writing in support of the 2002/03 expenditure plan to benefit the network of California fairs. It is critical that the \$40 million programmed in this plan continue to be utilized to benefit California fairs. These funds are derived entirely from a licensing fee assessed on gaming on horse racing. With 9 live racing fairs and 23 satellite wagering facilities, California's fairs play a key role in delivering the horse racing product to the citizens of the State.

As you can see from the expenditure plan, the 80 fairs in the State put these funds to good use to benefit their local communities. Without these funds, vital health and safety and infrastructure improvements would not be possible at many fairs. The Shasta District Fair has utilized funds programmed in prior expenditure plans to bring the facility up to ADA Standards; improve our electrical distribution system, install energy saving lights, swamp coolers and most importantly improved the safety and comfort for our customers. With our limited budget and the economic condition of Shasta County, these improvements would not be possible without this funding.

The Shasta District Fair is pleased with the direction and support we have received from the Division of Fairs and Exposition and the Department of Food & Agricultural over the past 3 years.

Again, programmed funding is essential for the continued success of the smaller fairs and would highly encourage support of the 2002/03 expenditure plan.

Please feel free to give me a call if you have any questions and thank you for your continued support of the fair industry.

Sincerely,

Trish Sciarani
CEO

SPONSORED BY THE 27TH DISTRICT AGRICULTURAL ASSOCIATION

Post Office Box 605 • Anderson, CA 96007 • Telephone 530/378-6789 • Fax 530/378-6788
1890 Briggs Street • www.shastadistrictfair.com • E-mail: events@shastadistrictfair.com



**NETWORK OF CALIFORNIA FAIRS
2002/2003 EXPENDITURE PLAN**



Orange County Fair & Exposition Center

32nd District Agricultural Association
88 Fair Drive
Costa Mesa, California 92626-6598
(714) 708-3247 - Voice
(714) 641-1783 - Fax

May 2, 2002

William (Bill) Lyons, Jr., Secretary
California Department of Food & Agriculture
C/o Division of Fairs & Expositions
1010 Hurley Way, Suite 200
Sacramento, CA 95825

Dear Secretary Lyons:

On behalf of the 32nd District Agricultural Association board of directors, I'd like to endorse the 2002 – 2003 Fairs & Expositions Expenditure plan. The plan is one that equitably distributes funds to communities throughout the State and supports the community building activities that take place on local fairgrounds.

The \$40 million allocated to the Fairs and Expositions fund, derived entirely from a licensing fee assessed on gaming on horse racing, provides much needed support to local fairs. This translates into community-based programs that provide desired services, educational opportunities, support of local commerce and provides infrastructure for community improvement and enhancements. In many communities the local fair is the foundation for civic advancement and community pride. In total, the dollars given to local fairs through the Fairs and Expositions fund have a profound effect on the health and well being of a community.

The Division of Fairs and Expositions, supported by the Department of Food and Agriculture, has worked diligently to improve the ability of fairs to better serve their communities. Through effective allocation plans, funds have been directed to programs that provide the most benefit. In addition, there has been an emphasis by the Division and the Department to provide the necessary training and tools for fairs to give stability, security and a sense of unity to local communities. This has proven to be invaluable in this time of national stress and uncertainty.

Through the leadership of the Division of Fairs and Expositions and the Department of Food and Agriculture, the allocation of funds in the proposed 2002 – 2003 expenditure plan, fairs will be able to provide a service to the State and nation that is both profound and responsive to the needs of local communities.

We urge legislative support of the 2002 – 2003 Division of Fairs and Expositions Expenditure plan.

Sincerely,
ORANGE COUNTY FAIR &
EXPOSITION CENTER

A handwritten signature in dark ink, appearing to read "Becky Bailey-Findley". The signature is fluid and cursive, with a long horizontal stroke at the end.

Becky Bailey-Findley
Chief Executive Officer

**NETWORK OF CALIFORNIA FAIRS
2002/2003 EXPENDITURE PLAN**



May 2, 2002

William (Bill) J. Lyons, Jr., Secretary
California Department of Food & Agriculture
C/o Division of Fairs & Expositions
1010 Hurley Way, Suite 200
Sacramento, CA 95825

Dear Bill Lyons,

The 38th District Agricultural Association, otherwise known as the Stanislaus County Fair is writing in support of the 2002/03 expenditure plan to benefit the network of California fairs. It is critical that the \$40 million programmed in this plan continue to be utilized to benefit California's fairs. These funds are derived entirely from a licensing fee assessed on gaming and horse racing. With 9 live racing fairs and 23 satellite wagering facilities, California's fairs play a key role in delivering the horseracing product to the citizens of the State.

As you can see from the expenditure plan, the 80 fairs in the State put these funds to good use to benefit their local communities. Without these funds, vital health, safety and infrastructure improvements would not be possible at many fairs. Like most fairs our facilities were built in the 40's and 50's, therefore the need for specialized maintenance and improvements has been desperately needed not only to preserve the health and safety of the general public but also to attempt to maintain and preserve the fairs interim rental revenue.

Our fair has utilized funds programmed in prior expenditure plans to make several improvements to the grounds and facilities. Examples of the type of improvements the Stanislaus County Fair has made in just the past three years include: replacement of three major electrical panels, major upgrades to community operated concession stands, major sidewalk improvements, handicap seating in the grandstand, arena renovation to include new bucking chutes, sound and speaker systems, complete ADA renovation of three restrooms, new cooling systems for all major exhibit buildings, exterior painting of all major buildings, new asphalt roadway, major landscaping and equipment as well as administrative upgrades such as a phone system and several computers.

The Stanislaus County Fair is very pleased with the direction and support we have received from the Division of Fairs & Expositions (F&E) and the Department of Food & Agriculture (CDFA). The recent development of the new Millennium Flex Program has given local fairs the autonomy to budget improvements and customize programs relative to the communities we serve. We are most appreciative of the wisdom and leadership exhibited by both CDFA and F&E that brought about the creation and implementation of the new Millennium Flex Program (performance rated fairs). No doubt the Millennium Flex Program will have a positive affect on the fair industry as a whole for years to come.

Sincerely,


Mary Hemminger
Deputy Manager
38th District Agricultural Association

"Promoting Agriculture, Education, Entertainment, and Technology"

900 North Broadway • Turlock, CA 95380
209-668-1333 • Fax 209-668-0410
www.stancofair.com

State of California

40th District Agricultural Association

May 1, 2002

William (Bill) J. Lyons, Jr., Secretary
California Department of Food and Agriculture
C/O Division of Fairs & Expositions
1010 Hurley Way, Suite, 200
Sacramento, Ca 95825

Dear Secretary Lyons:

The Yolo County Fair is writing in support of the 2002/03 expenditure plan to benefit the network of California fairs. It is critical that the \$40 million programmed in this plan continue to be utilized to benefit California's fairs. These funds are derived entirely from a licensing fee assessed on gaming on horse racing. With 9 live racing fairs and 23 satellite wagering facilities, California's fairs play a key role in delivering the horse racing product to the citizens of the State.

As you can see from the expenditure plan, the 80 fairs in the State put these funds to good use to benefit their local communities. Without these funds, vital health and safety and infrastructure improvements would not be possible at many fairs. Our fair has utilized these funds to replace existing restrooms, re-roof buildings and build a new office. With the support of Divisions & Expositions our fair would continue to apply these funds to provide a much-needed, 50-unit RV Park for the community and other projects that are essential to our community.

The Yolo County Fair is very pleased with the direction and support we have received from the division of Fairs & Expositions and the department of Food & Agriculture the last 2 years. The aid and guidance that Elizabeth Houser has provided is outstanding.

Sincerely,



Lonny Wunder
CEO

LW:ljm

CC: Senator Maurice Johannessen
Assemblywoman Helen Thomson



Mission

To promote an understanding of, and appreciation for, the role of agriculture in contemporary society through classroom education, community events and distribution of information through a public information program.

SCHOOLS' INVOLVEMENT PROGRAM
State of California • 48th District Agricultural Association

May 3, 2002

William (Bill) J. Lyons, Jr., Secretary
California Dept. of Food and Agriculture
C/o Division of Fairs & Expositions
1010 Hurley Way, Suite 200
Sacramento, CA 95825

Dear Secretary Lyons:

The Schools' Involvement Fair of the 48th District Agricultural Association is writing in support of the 2002/2003 expenditure plan to benefit the network of California fairs. It is critical that the \$40 million programmed in this plan continue to be used to support California's fairs. These funds are derived entirely from a licensing fee assessed on gaming on horse racing. The nine live racing fairs and 23 satellite wagering facilities at California's fairs play a key role in delivering the horse racing product to California citizens.

As you can see from the expenditure plan, the 80 fairs in California use these funds to benefit their local communities. Without these funds, vital health and safety and infrastructure improvements would not be possible at many fairs. Although we have no fairgrounds, these funds have given us the opportunity to bring agriculture's message to the urban and suburban population in the San Gabriel Valley and local communities. Children who would otherwise not have the opportunity to learn about the importance of agriculture in their lives, have been able to do so through school gardens, hydroponics and/or hatching chicks and trout in the classroom with projects obtained from our program. Community residents have had the chance to see how public education in California is teaching their children important lessons.



Mission

To promote an understanding of, and appreciation for, the role of agriculture in contemporary society through classroom education, community events and distribution of information through a public information program.

SCHOOLS' INVOLVEMENT PROGRAM
State of California • 48th District Agricultural Association

Secretary William (Bill) J. Lyons, Jr.

May 3, 2002

The Schools' Involvement Fair is very pleased with the direction and support we have received from the Division of Fairs and Expositions and the Department of Food and Agriculture in the last few years. They have been responsive to our requests, provided information and training to me and to members of our staff and have worked with us to provide assistance when needed. The Millennium Flex Fund has enabled us to send staff to conferences and training programs and improve technology in our office.

The 2002/2003 expenditure plan has my unqualified support. If I can provide any additional information about the importance of the expenditure plan to our fair, or answer any other questions, please let me know.

Sincerely,

A handwritten signature in black ink that reads "Joan Smith". The signature is fluid and cursive.

Joan Smith
Manager/CEO



May 1, 2002

William (Bill) J. Lyons, Jr., Secretary
California Department of Food & Agriculture
C/o Division of Fairs & Expositions
1010 Hurley Way, Suite 200
Sacramento, CA 95825

Dear Secretary Lyons:

As the Chief Executive Officer of the Lake County Fair, I am writing to express my support for the 2002/03 expenditure plan which will benefit the network of California fairs. The \$40 million in this plan is critical to the continued success of California's fairs. California's fairs play a key role in generating these funds, which are derived entirely from a licensing fee assessed on gaming on horse racing. 9 live racing fairs and 23 satellite wagering facilities deliver the horseracing product to the citizens of the State.

The 80 fairs in the State put these funds to good use to benefit their local communities, as you can see from the expenditure plan. The Lake County Fair has utilized funds programmed in prior expenditure plans to meet disabled access requirements for our patrons; to protect our patrons and employees by replacing aging electrical supply and sewer removal systems with modern systems; to protect the assets of the State by repairing or replacing the roofs on fair buildings; and to provide for the future comfort of our patrons by adding heating and air conditioning to our buildings. These health, safety and infrastructure improvements would not be possible either here or at many fairs without these funds.

Additionally, as the co-chairman of the California Fairs Alliance's Motorized Racing Task Force, and as a past president of the board of the California Fair's Services Authority which provides fairs with insurance, I am pleased to note the planned expenditure for an updated study of motorized racing sound generation and curfews. This information will protect the more than 30 fairs which host motorized racing, including Lake County Fair, by determining safe noise levels for our patrons and employees.

During the past several years, the Division of Fairs & Expositions and the Department of Food & Agriculture have shown an understanding of the real needs of fairs so that the Lake County Fair and others can provide the quality facilities and services the residents of California deserve.

Sincerely,

A handwritten signature in blue ink, appearing to read "Richard Persons".

Richard Persons
Chief Executive Officer

401 Martin Street • P.O. Box 70 • Lakeport, CA 95453 • (707) 263-6181 • FAX (707) 263-7706

49th District Agricultural Association • www.lakecountyfair.com



**NETWORK OF CALIFORNIA FAIRS
2002/2003 EXPENDITURE PLAN**

(707) 894-3992
FAX (707) 894-9553
1 Citrus Fair Drive
Cloverdale, CA 95425

ANNUALLY SINCE 1892



Members
Redwood Empire Ass'n.
American Camellia Society
Western Fairs Ass'n.

A NON-PROFIT ORGANIZATION

May 1, 2002

William (Bill) J. Lyons, Jr., Secretary
California Department of Food and Agriculture
C/o Division of Fairs and Expositions
1010 Hurley Way, Suite 200
Sacramento, CA 95825

Dear Secretary Lyons, Jr.:

The Cloverdale Citrus Fair is writing in support of the 2002/03 expenditure plan to benefit the network of California fairs. It is critical that the \$40 million programmed in this plan continue to be utilized to benefit California's fairs. These funds are derived entirely from a licensing fee assessed on gaming on horse racing. With 9 live racing fairs and 23 satellite wagering facilities, California's fairs play a key role in delivering the horse racing product to the citizens of the state.

As you can see from the expenditure plan, the 80 fairs in the State put these funds to good use to benefit their local communities. Without these funds, vital health and safety and infrastructure improvements would not be possible at many fairs. Our fair has utilized funds programmed in prior expenditure plans to bring the facility up to Cal-Osha standards, repair health and safety issues, receive training, and build better facilities to showcase agriculture and our diverse community during our fair.

The Cloverdale Citrus Fair is very pleased with the direction and support we have received from the Division of Fairs and Expositions and the Department of Food and Agriculture the past three years. I feel they have offered strong leadership and set industry standards that benefit all.

Thank you for taking the time to read our letter in support of the 2002/03 expenditure plan for the California Fair system.

Sincerely,

Bonnie Wlodarczyk
Bonnie Wlodarczyk, CEO
Cloverdale Citrus Fair



Where the Vineyards meet the Redwoods





LODI GRAPE FESTIVAL & HARVEST FAIR

May 1, 2002

William (Bill) J. Lyons, Jr., Secretary
California Department of Food & Agriculture
C/o Division of Fairs & Expositions
1010 Hurley Way Suite 200
Sacramento, CA 95825

Dear Secretary Lyons:

The Lodi Grape Festival & Harvest Fair (San Joaquin County Fair) is writing in support of the 2002/03 expenditure plan to benefit the network of California fairs. It is critical that the \$40 million programmed in this plan continue to be utilized to benefit California's fairs.

The funds received from the expenditure plan have been greatly appreciated by the Lodi Grape Festival. We have used these funds to upgrade and expand electrical systems, make ADA-mandated renovations, replace antiquated equipment, and build new facilities. These projects have created jobs for our community and have allowed us to produce events and implement programs that draw people not only from all over California but from surrounding states as well. This, in turn, helps us fulfill our mission to promote the agriculture of San Joaquin County and to market and operate the fairgrounds as a public events center year-round to the benefit of the community.

The Lodi Grape Festival is extremely pleased with the guidance and support we have received from the Division of Fairs and Expositions and Department of Food and Agriculture over the years, and the continuation of that support is vital to the success of all California fairs. The expenditure plan encourages fairs to be responsible and creative in using their funds to complete projects that will increase future revenue sources.

Sincerely,

Mark A. Armstrong
General Manager

MAA:mms

FAIRPLEX

May 1, 2002

William (Bill) J. Lyons, Jr., Secretary
California Department of Food & Agriculture
C/o Division of Fairs & Expositions
1010 Hurley Way, Suite 200
Sacramento, CA 95825

Dear Secretary Lyons:

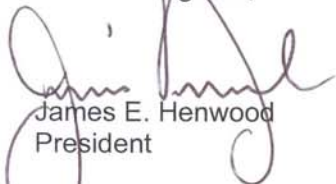
The Los Angeles County Fair Association is writing in support of the 2002/03 expenditure plan to benefit the network of California fairs. It is critical that the \$40 million programmed in this plan continue to be utilized to benefit California's fairs. These funds are derived entirely from a licensing fee assessed on gaming on horse racing. With 9 live racing fairs and 23 satellite wagering facilities, California's fairs play a key role in delivering the horse racing product to the citizens of the State.

As you can see from the expenditure plan, the 80 fairs in the State put these funds to good use to benefit (social and economic) their local communities. Without these funds, vital health and safety and infrastructure improvements would not be possible at many fairs. Our fair has utilized funds programmed in prior expenditure plans to:

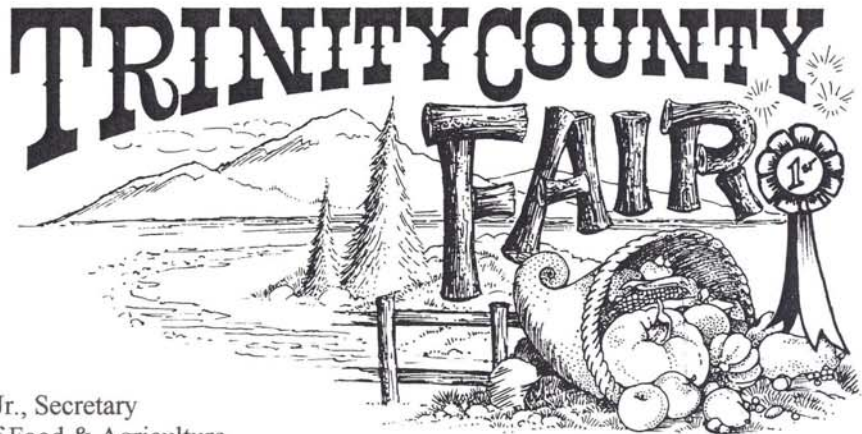
- A Community of Angels, a valuable partnership of the Fair and L.A. Arts Community.
- Building renovations, including ADA compliance and other code requirements
- Supplement Fair's educational content (90,000 school children) and numerous community outreach programs
- Impact of 9/11 on L. A. County Fair and greater community of Los Angeles

The Los Angeles County Fair Association is very pleased with the direction and support we have received from the Division of Fairs & Expositions and the Department of Food & Agriculture the last few years. Their collective focus, guidance and support has been invaluable in our stewardship of the L. A. County Fair.

Warmest regards,



James E. Henwood
President
:ky



May 1, 2002

William (Bill) J. Lyons, Jr., Secretary
California Department of Food & Agriculture
C/o Division of Fairs & Expositions
1010 Hurley Way, Suite 200
Sacramento, CA 95825

Dear Secretary Lyons,

The Trinity County Fair is writing in support of the 2002/03 expenditure plan to benefit the network of California fairs. It is critical that the \$40 million programmed in this plan continue to be utilized to benefit California's fairs. These funds are derived entirely from a licensing fee assessed on gaming on horse racing. With 9 live racing fairs and 23 satellite wagering facilities, California's fairs play a key role in delivering the horse racing product to the citizens of the State.

As you can see from the expenditure plan, the 80 fairs in the State put these funds to good use to benefit their local communities. Without these funds, vital health and safety and infrastructure improvements would not be possible at many fairs. Our fair has utilized funds programmed in prior expenditure plans to purchase much needed computer equipment and programs, provide training for staff, purchase new sound systems and radios, provide director training, complete many Major Maintenance and ADA projects, and make emergency repairs. Being one of the smaller fairs, our sources for generating revenue on our own is very limited, and without these programs we would be unable to make the necessary upgrades to our equipment and facility. We rely on state funding and its loss would be devastating for small fairs like us.

The Trinity County Fair is very pleased with the direction and support we have received from the Division of Fairs & Expositions and the Department of Food & Agriculture the last few years. The management at CDFA and F&E have worked hard to better understand the needs of fairs, and make improvements in their programs to meet those needs.

Sincerely,


Jerry Fulton
CEO

FAIR SUCCESS STORIES

There are a number of successes that the California fair industry achieved throughout the year due to the resourcefulness of dedicated staff. F&E requested fairs share a few of their successes for inclusion in this year's expenditure plan. The highlights of a few of the network of California fairs success stories follow:

Nevada County Fair

If you think you heard music coming from the mountains, you were right! The Nevada County Fair, in conjunction with the local non-profit organization "Music in the Mountains", has remodeled the Main Exhibit Hall creating a home for the performing arts in its community. The project has also included the construction of a 3,500 square foot addition to the Main Exhibit Hall. The Nevada County Fair was able to fund its portion of project cost via the Revenue Generating Program.

The multipurpose Main Exhibit Hall now features classical music and will be used as a performance hall in the immediate future. The facility has also been enhanced for high profile interim events that will generate additional revenue from conventions, trade shows and mid-week meetings. Current events, which include auctions, gun shows, art shows, the annual Nevada County Fair, Draft Horse Classic and the Country Christmas Fair, have all been reinvigorated by the remodeling and expansion. With the completion of this project, Music in the Mountains, has agreed to sign a lease agreement that will generate additional revenues to the Fair. It is expected that the partnership established between the Fair and Music in the Mountains will last many years beyond the original ten-year agreement.



Nevada County Fair's newly remodeled Main Exhibit Hall is a wonderful addition to the Fair's interim facility space. The photos above show the Hall, from the rear (left) and front (right), during use of the facility for a Music in the Mountains performance.

Strategic Partnering with Fair Related Businesses

The network of California fairs are served by a group of small, privately owned businesses, commonly referred to as “fair related businesses.” These fair related businesses provide critical programming to the fair event and are a strategic partner to the success of the event. These businesses include concessionaires who provide unique fair food and novelties, and commercial exhibitors.

One of the challenges facing many of these businesses was the difficulty they had in obtaining financing to upgrade their concession trailers and displays. New and improved trailers and displays enable vendors to more easily meet current health, safety and electrical codes; provide more energy efficient operations while enhancing the overall appearance of the fairgrounds. These businesses identified the ability to enter into longer-term concessionaire agreements with fairs, beyond their current one-year standard, as critical to securing financing to make ongoing improvements. The California Department of Food and Agriculture, Division of Fairs and Expositions (F&E) agreed to explore options to address this need with the fair related businesses and the fairs.



Country Fair Cinnamon Rolls owners, Eldon & Janis Dale and family, discuss the benefits of multi-year contracting to fair-related businesses with Fairs and Expositions Director, Liz Houser, at the 2002 WFA Convention.



In 2001, F&E began working with a group of fair managers, concessionaires, commercial exhibitors, and other knowledgeable parties to explore alternatives to the current practice of one-year agreements. The group agreed there was merit in allowing fair management the option to enter into longer-term agreements, and that the adoption of formal regulations would be the appropriate vehicle to achieve this goal. The result of this team effort were regulations which were approved and formally adopted in the California Code of Regulations (Title 3, Div. 7, Ch. 2, Art. 1, Sect. §7010), effective January 19, 2002. These regulations cover the maximum length of these contracts, termination clauses, performance measures and evaluation criteria.

These regulations, which allow multi-year vendor contracts, will benefit many small businesses and fairs by enabling vendors to purchase new equipment and plan for future business needs.

AgroBaja – Mexicali, Baja California, Mexico

April 11 – 13, 2002

At the request of Secretary Lyons, The Division of Fairs & Expositions joined a delegation of California Fair industry leaders to the Agro-Baja Trade and Farmer's Show in Mexicali on April 11, 12 & 13th, 2002.

This learning exchange program offered an exciting opportunity for both California fairs, Agro-Baja staff and the agricultural community of Baja California to experience different cultures, share ideas, foster the promotion of agriculture, develop new relationships and strengthen both of our State's programs.

Our participation in the event included the premier of the Spanish language version of the traveling agricultural education exhibit "Quest for Food". Fair CEO's and F&E staffed the booth. Handouts included a pamphlet briefly outlining the role of California's agricultural fairs, and information on CDFA's pest prevention programs (including Pierce's disease and the medfly). The children who attended the event were given California Ag is # 1 necklaces and the chance to be "agricultor po el dia" (farmer for a day) by planting flowers in a hands-on agricultural activity.

California Fair CEO's attended a presentation and toured the "Fiesta Del Sol" fairgrounds in Mexicali. This visit provided an opportunity to better understand how event is managed and the types of activities that appeal to this market area.

Through this initial interaction with agricultural communities of Baja California, our fairs bridged the border through strategically aligned efforts; shared ideas on similar issues, challenges and opportunities with an emphasis on cultural outreach to California's Hispanic community; networked with organizations and events that embrace tradition, showcased industry and production of events in multi-cultural urban settings; and attracted new guests to fairs located in close proximity to the shared Border.



At the 2002 Agro-Baja Trade and Farmer's Show in Mexicali, CDFA's "Quest for Food" display was very popular with patrons.

A Fair and Its Vision

For 119 years the Big Fresno Fair's north grounds have been a series of buildings surrounded by walkways. During the annual fair this area resembled a maze with crowded paths that caused people to bump into each other. This angered fairgoers, and in some cases caused fights. A team solution was proposed by the Board of Directors, along with insight from the CEO and staff.

The Wine and Roses Building was one of the oldest buildings on the grounds. Without air conditioning or heating, this building was rarely rented for interim events. During fair it housed the Floriculture Department, which always appeared to be spread out and entries low because of the building's enormous size. The fair team proposed to tear down the Wine and Roses Building and create a "park-like" setting complete with grass, trees, fountains and an old fashioned bandstand, a few things that the Big Fresno Fair has never had!

This was the largest capital improvement project ever undertaken at the Big Fresno Fair. The Wine and Roses Building was torn down following the 2000 fair. The Big Fresno Fair had less than one year to make its "park-like" dream a reality. The fair moved trees and opened up more than 3 acres of fairgrounds. Construction continued right up until fair opening day on October 3, 2001. The Pavilion had been completed! An area that once held an old wooden building was now an area surrounded by brushed colored concrete walkways, grass, shrubs, trees, and sloping grass burms that rolled down to an impressive red and white old-fashioned bandstand in the middle. The bandstand is used as a community stage and the grass area provides seating for families to watch the entertainment.



It was a heart-warming experience for management, staff and the Board of Directors to watch families sitting on the grass in the evenings, being entertained at the Pavilion as their children rolled down the hills and chased each other in laughter with the glow of the carnival in the background. It has been 6 months since the close of the 2001 Big Fresno Fair and the fair continues to receive compliments about the Pavilion and surrounding area. The Big Fresno Fair has truly become a place where the community wants to be. The Pavilion project was just the first step in a multi-year plan to improve facilities, expand the fair's vision and enhance community pride.

Fair Achieves a “Mother Lode” of Success

The Mother Lode Fair located within the city limits of the beautiful foothill town of Sonora is one of California’s keepsakes. Fifty-four thousand people make Tuolumne County their home; nearly 30,000 of them attend the annual fair.

This 2002 the Mother Lode Fair embarked on three exciting projects for success:
1) Livestock Electrical Project; 2) the EEM Grant and Trees for the Millennium; and
3) Ag Education and “Read to Win.”

The Livestock Electrical Project is funded through the Major Maintenance Program. The Mother Lode Fair was awarded \$100,000 for phase I of the Livestock Electrical Project. This project upgrades and brings the electrical service up to code in the livestock area. The livestock area is used regularly throughout the year with a weekly “Open Air Market,” dog obedience classes, monthly gymkhanas, annual rodeos, rabbit shows and monster truck shows with added heavy use during the four days of fair. Completion of this electrical work will allow the fair to meet the demand for power in the livestock area while safeguarding visitors and participants.

The Mother Lode Fair is the recipient of two tree grants for 2002, “Trees for the Millennium” through the Department of Forestry and Fire Protection and a “Environmental Enhancement and Mitigation” grant through the California Transportation Commission. With the awarding of these grants, the fair was able to engage the services of a landscape architect to plan the placement of two hundred and forty-four trees, thirteen hundred and seventy ground cover, scrubs and vines and install a complete irrigation system. The benefit from the tree grants will have a substantial aesthetic impact on the Mother Lode Fair’s twenty-acre fairgrounds.



Above, donated trees line the Mother Lode Fair property.

“Ag Education” is the Mother Lode Fair’s way to contribute to California’s rich agricultural base. The fair annually provides county school classrooms learning material on “Ag” products or resources. This year the fair is saluting the American Quarter Horse and recognizing the importance of water, “Make Every Drop Count.” This year the fair is providing a “saw-horse” figure, the history of the American Quarter Horse, two videos, literature on the anatomy and conformation of the American Quarter Horse, color books and bumper stickers. County school classrooms will be given “Water Facts and Fun” activity book, a map of California waterways, a poster of the water cycle and water drop stickers. Forty-five classrooms are participating and will provide the fair with completed horse or water projects for display at this year’s fair. “Read to Win” is a reading incentive program to reward students for reading for pleasure. Each student K-sixth grade will be given a free ticket to the opening day of the fair for reading three hundred minutes. This ticket includes all carnival rides. This is the third year that the fair has offered the “Read to Win” program. The first year, 2000 the fair gave 498 “Read to Win” tickets, last year the number nearly doubled with 962 and this year we expect to have around 2000 “Read to Win” winners.

CALIFORNIA FAIRS



LEGEND

- Fair Site
- + Fairs with Live Racing
- Satellite Wagering Facility
- Special Event Centers
- OES Mobilization Sites

DAA= District Agricultural Association

