



ANIMAL CARE PROGRAM

HSC 25990-25994 (ALSO KNOWN AS PROPOSITION 12 INITIATIVE)

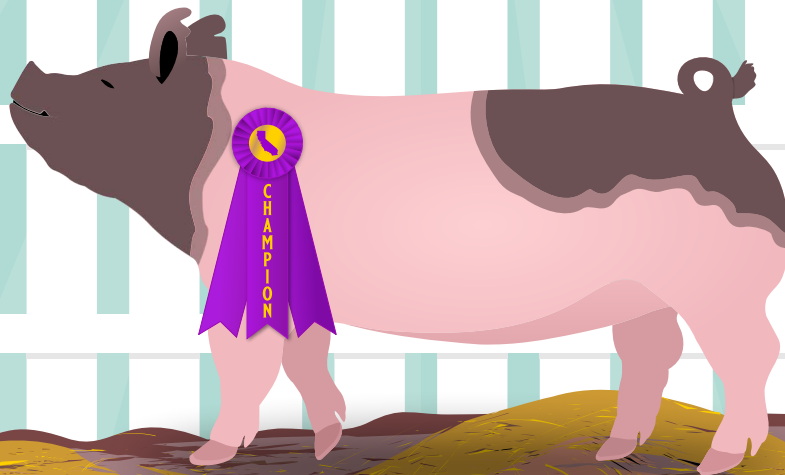
FREQUENTLY ASKED QUESTIONS

FAQ'S FOR

CALIFORNIA FAIR
& EXHIBITIONS

STAKEHOLDERS

2022





ANIMAL CARE PROGRAM

HSC 25990-25994 (ALSO KNOWN AS PROPOSITION 12 INITIATIVE)

FREQUENTLY ASKED QUESTIONS

FAQ's: Prop 12 FAQs for California Fair and Exhibitions Stakeholders

What is Prop 12?

- ♥ Ballot initiative passed in 2018 which set minimum confinement standards for California farms¹ raising egg-laying hens, breeding pigs and veal calves.
- ♥ The law also made it illegal to sell products from these farm animals in California that were not raised according to the minimum space requirements, regardless of if the animal was raised in California or out-of-state ([Prop 12 Health and Safety Code](#)).

Which farm animals are included under Prop 12?

- ♥ Egg-laying hen means any female domesticated chicken, turkey, duck, goose, or guineafowl kept for the purpose of egg production.
- ♥ Breeding pig means any female pig of the porcine species kept for the purpose of commercial breeding who is six months or older or pregnant.
- ♥ Veal calf means any calf of the bovine species kept for the purpose of producing the food product described as veal.

Which products from these animals are included under Prop 12?

- ♥ Shell eggs or liquid eggs means a whole egg of an egg-laying hen in its shell form or means eggs of an egg-laying hen broken from the shells.
- ♥ Whole pork meat means any uncooked cut of pork, including bacon, ham, chop, ribs, riblet, loin, shank, leg, roast, brisket, steak, sirloin, or cutlet, that is comprised entirely of pork meat of a breeding pig, or immediate offspring of a breeding pig.
- ♥ Whole veal meat means any uncooked cut of veal, including chop, ribs, riblet, loin, shank, leg, roast, brisket, steak, sirloin, or cutlet, that is comprised entirely of veal meat of a calf raised for veal.

What are the minimum confinement standards for these farm animals?

- ♥ All of these farm animals must be confined in a manner that allows the animal to lie down, stand up, fully extend limbs, and turn around freely. Additionally,
- ♥ Egg-laying hen: Must have access to enrichments like purchases, nests and scratch areas and the minimum amount of usable floorspace per hen required by the 2017 edition of the United Egg Producers' Guidelines for Cage-Free Housing system ([UEP 2017 Guidance](#))
- ♥ Breeding pig: minimum of 24 square feet of usable floorspace per breeding pig with an allowance for the use of farrowing crates (HSC Section 25992 (f)).
- ♥ Veal calf: minimum of 43 square feet of usable floorspace per calf.

¹ "Farm" means the land, building, support facilities, and other equipment that are wholly or partially used for the commercial production of animals or animal products used for food or fiber.



ANIMAL CARE PROGRAM

HSC 25990-25994 (ALSO KNOWN AS PROPOSITION 12 INITIATIVE)

FREQUENTLY ASKED QUESTIONS

FAQ's: Prop 12 FAQs for California Fair and Exhibitions Stakeholders

What are the exceptions to Prop 12 related to California fairs and exhibitions?

- ♥ Prop 12 minimum confinement standards are not required during state or county fair exhibitions.
- ♥ 4-H and other youth programs for exhibition are exempt from the minimum confinement standards.

If I am buying a youth program market pig from a breeder for the 2022 fair season, do I need certification that the breeding pig (dam of the market pig) is housed in compliance with Prop 12?

- ♥ To maximize the eventual market potential for a youth program market pig, a best practice is to request written certification from the seller stating that the breeding pig (the dam) was kept in Prop 12 compliant housing.
- ♥ All farms located in California that are raising animals included in Prop 12 for commercial sale must be compliant with minimum confinement standards. *This is the responsibility of the farm owner or operator* and applies to breeder operations in California regardless of who buys the pigs.
- ♥ If products from fair animals might be sold in California commerce, buyers of the pig or buyers of downstream products (processors, retailers) may require written certification that the market pig came from a breeding pig that was confined in compliance with Prop 12 minimum standards, even if the breeder is out of state.

What should I do as a fair CEO or Junior Livestock Auction Committee that manages livestock auction?

- ♥ Reach out to your processor to find out what documentation related to Prop 12 they need for market pigs and veal calves processed for resale.
- ♥ Work with participants and processors to: streamline the collection of written certification; establish certification for all entrants and process as a lot; explore processing options not subject to Prop 12 like custom harvest or sponsored donation of products to non-profit organizations; etc.

To learn more and to sign up for Prop 12 updates, scan or click the below QR code, or visit <https://www.cdffa.ca.gov/ahfss/Prop12.html>

You can follow us on social media by scanning the below QR codes or by clicking on each individual QR code with your cursor. Email questions to: AnimalCare@cdffa.ca.gov



ANIMAL CARE PROGRAM

HSC 25990-25994 (ALSO KNOWN AS PROPOSITION 12 INITIATIVE)



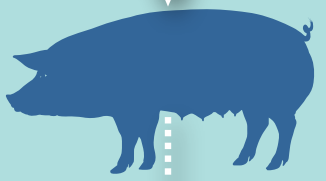
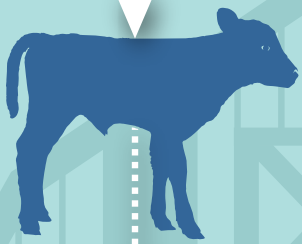
Commercial sale of all **Proposition 12** defined covered products must not be from covered animals **confined in a cruel manner*** even when covered products originate from covered animals raised outside of California

*Cruel manner is defined as confining animals in space smaller than described above or in a manner that prevents the animal from lying down, standing up, fully extending the animal's limbs, or turning around freely.



JANUARY 1, 2020

JANUARY 1, 2022



Egg-laying hens require a minimum of 144 square inches of floor space per hen.

Calves raised for veal require a minimum of 43 square feet of floor space per calf.

Egg-laying hens included require cage-free housing outlined in United Egg Producers 2017 Guidelines.

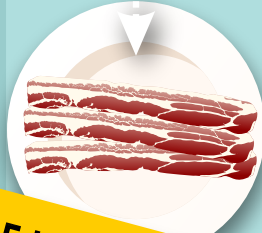
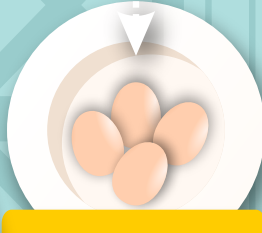
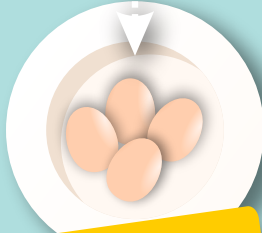
Breeding pigs require a minimum of 24 square feet of floor space per pig.

FOOD PRODUCTS INCLUDE

FOOD PRODUCTS INCLUDE

FOOD PRODUCTS INCLUDE

FOOD PRODUCTS INCLUDE



**SHELL EGGS
LIQUID EGGS**

**WHOLE UNCOOKED VEAL
UNCOOKED VEAL CUTS**

**SHELL EGGS
LIQUID EGGS**

**WHOLE UNCOOKED PORK
UNCOOKED PORK CUTS**