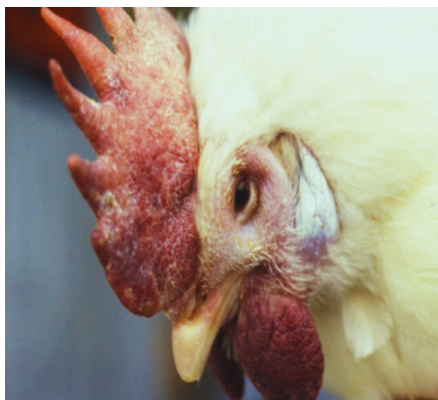


**A VISUAL GUIDE:**

APRIL 2023

## COMMON CLINICAL SIGNS OF HIGHLY PATHOGENIC AVIAN INFLUENZA AND VIRULENT NEWCASTLE DISEASE IN POULTRY



COMB, WATTLE AND EYELID  
SWELLING



DISCOLORATION OF COMB,  
WATTLE AND LEGS



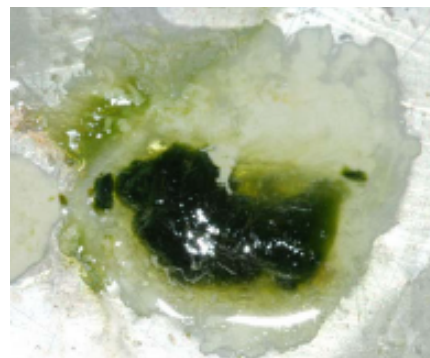
DIFFICULTY BREATHING,  
COUGHING OR SNEEZING



EXCESSIVE DISCHARGE  
OF FLUIDS



TWISTING OF HEAD AND  
NECK (TORTICOLLIS)





GREEN WATERY DIARRHEA

**Other possible signs:** Decreased egg production, decrease in water and/or food consumption, wing and leg paralysis, incoordination, hock/leg swelling, and lack of energy. High mortality (deaths) can be expected, even sudden death without symptoms.

The clinical signs of Virulent Newcastle Disease and Highly Pathogenic Influenza are similar; **if you are concerned your flock may have one of these illnesses, please get in touch with our Sick Bird Hotline at: 1-866-922-BIRD (2473)**

For more information, visit us at:  
**[cdfa.ca.gov/go/AvianHealth](https://cdfa.ca.gov/go/AvianHealth)**

Follow us on social media:

 California Avian Health Education Network  
 CAHENSocal

