



## Guidelines for Veterinary Practitioners and Shelter Veterinarians Collecting Samples for virulent Newcastle Disease (vND)

Veterinarians need to practice **strict** biosecurity between avian patients to assure that there is no opportunity for disease transmission between patients.

Healthy bird sampling is **not** recommended. Please evaluate risk and contact the sick bird hotline to coordinate shipment of your samples. Please call the sick bird hotline when submitting samples or carcasses of sick birds: **866-922-2473**

Swab samples are the preferred method for diagnosing vND. Please do not collect blood samples. When submitting a carcass that is suspicious for vND, it will be swabbed and the carcass will be destroyed. If vND is negative, a second bird, if available, may be submitted for necropsy. If necropsies are requested by the vND incident, carcasses must be sent to the **San Bernardino CAHFS laboratory**.

All swabs for vND must be mailed to UC Davis laboratory. Please **DO NOT SEND** any samples to the San Bernardino, Tulare, or Turlock CAHFS laboratories.

### Items needed for sampling:

- Clean clothing or coveralls that can be washed and disinfected after **each** sample collection. If using disposable products, place in trash bag, disinfect outside of bag and dispose of appropriately
- Disposable gloves
- Goggles, or other eye protection
- Disinfectant. Remove organic waste first, then disinfect according to manufacturer directions.
  - Lysol\*
  - Virkon\* (prepared as directed per manufacturer directions)
  - Bleach 5.25-6% concentration diluted with water (i.e. 1 part bleach to 9 parts water)
  - Hand sanitizer- use before and after handling each bird; have available at entrances of avian isolation areas of **both** pet birds and poultry locations, if applicable. Use when entering room, before applying gloves, and when doffing PPE.
- Foot baths, designated boots that are easily cleaned after each use, or disposable shoe covers must be used in isolation areas, if applicable.
  - Dry foot bath option: Bleach powder called Traffic C.O.P made by PSP LLC\*. Remove organic matter daily and fully change every two weeks according to manufacturer directions.
  - Wet foot bath option: Virkon; solution of bleach water (see above under Disinfectants). Fully change solution daily to every two days.

### Sample collection:

- There can **only** be 5 swab samples collected into one media tube.
  - Different species **must** be collected in **different** tubes.
  - Different samples (oropharyngeal vs cloacal) **must** be collected in **different** tubes, unless otherwise specified (pigeons and doves, see below).
- Collect oropharyngeal swabs for every poultry species **except** domestic waterfowl.
- Collect cloacal swabs only from domestic waterfowl species (ducks, geese, swan, etc).
- For backyard doves and pigeons: Oropharyngeal and cloacal swabs from individual pigeons can be pooled. Collect oropharyngeal samples before cloacal samples.

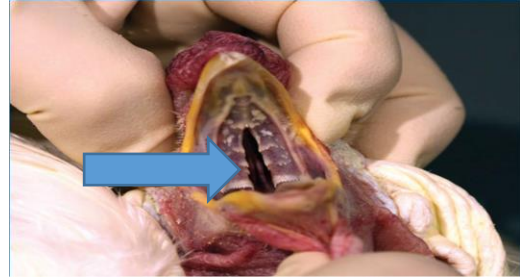
\*Disclaimer: Trade names used do not constitute a guarantee, warranty, or endorsement of the products, nor criticize similar products not named. CDFA bears no responsibility for liability resulting from the use of these products.



CALIFORNIA DEPARTMENT OF  
FOOD & AGRICULTURE  
Karen Ross, Secretary



- **Oropharyngeal swabs:**
  - Open the beak to expose the oropharyngeal cavity.
  - Swab the back of the throat, inside the choanal slit, move swab around 4 to 5 times to collect as much mucus as possible.
  - Do **not** insert swab too deeply.
  
- **Cloacal swabs:**
  - Lift the tail to visualize the vent.
  - Carefully insert the swab into the vent. Do **not** insert swab too deeply. Rotate swab about 4 to 5 times.
- After swabbing, stir the swab vigorously in the tube for 5 seconds.
- Bring swab to the top of the tube and roll all the contents of the swab out against the inside of the tube.
- **Do not leave swabs inside the tube.**
- Use **only** 5 swabs per tube.
- Tightly close the tubes and ensure that they are free of any organic material.



#### Labels and Laboratory Submission Form:

- Label tubes clearly with a waterproof marker
- Make sure the species and owner name closely match on the tubes and the laboratory submission form
- Enter the additional data for that tube on the form.
  - The premises owner and animal owner (if different)
  - The phone number and physical address of owner,
  - The total number of birds in the flock,
  - Complete the brief clinical history and if birds are showing any clinical signs of disease
  - Make sure to fill the form in its entirety

#### Mail Lab Samples:

- Keep media tubes cool after samples are collected. The tubes can be refrigerated if not be mailed immediately. **Do not freeze.**
- Place the tubes into a quart-size Ziploc bag and seal. Spray with disinfectant on the outside of the bag.
- Place the disinfected bag of tubes inside a gallon size Ziploc bag and the submission form in a separate Ziploc bag.
- Place the disinfected bag of tubes with an ice pack and the bag with the submission form into the shipping box provided
- Ship swab samples to the UC Davis laboratory using the provided Fed Ex First overnight shipping label. Please send all samples **only** to UC Davis laboratory.

\*Disclaimer: Trade names used do not constitute a guarantee, warranty, or endorsement of the products, nor criticize similar products not named. CDFA bears no responsibility for liability resulting from the use of these products.