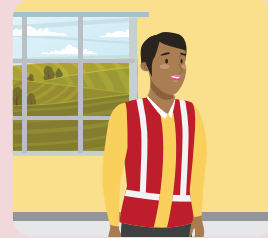


INCIDENT MANAGEMENT TEAM

The Incident Management Team (IMT) for a Foreign Animal Disease (FAD) response is typically a team of state animal health officials and/or USDA Veterinary Services personnel organized using the principles of the Incident Command System (ICS). The ICS is a scalable mechanism to efficiently manage resources and effectively control the disease. The IMT may also include other entities such as assisting and cooperating agencies.

INCIDENT COMMAND POST

The Incident Command Post (ICP) is a physical location (e.g. in a building or tent) where the responders work and/or gather to manage the disease response and is also the center for management of on-scene and tactical operations.



INCIDENT COMMANDER

The Incident Commander (IC) is responsible for overall incident management.

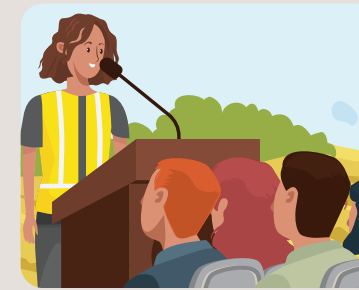
THE COMMAND STAFF

Assigned to carry out staff functions needed to support the Incident Commander. These functions include interagency liaison, incident safety, and public information.



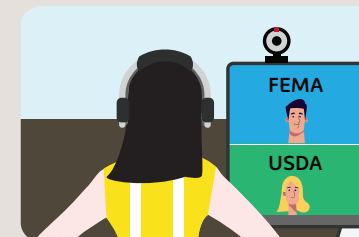
SAFETY OFFICER

Performs safety inspections, identifies hazardous situations, develops emergency and safety protocols, monitors incident operations, and advises the Incident Commander (IC) on all matters relating to operational safety, including the health and safety of incident personnel.



PUBLIC INFORMATION OFFICER

Develops all the public messaging and messaging strategies, and keeps the public and press informed to prevent the spread of misinformation and to meet incident-related information needs.



LIAISON OFFICER

Serves as a point of contact for communicating with agency representatives from cooperating agencies and stakeholder groups.

The Incident Action Plan (IAP) is a written plan that sets forth the incident objectives and reflects the tactics necessary to manage an incident during an operational period.

THE GENERAL STAFF

Responsible for the functional aspects of the Incident Command structure.



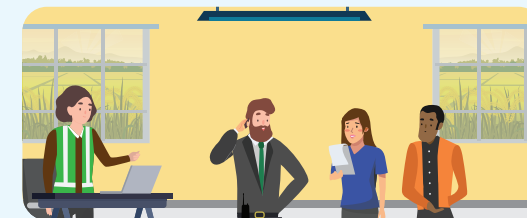
PLANNING SECTION CHIEF

Develops and directs the preparation of the **Incident Action Plan (IAP)**, collects and evaluates information, maintains resource status, performs strategic planning, and documents incident records.



LOGISTICS SECTION CHIEF

Develops and directs the provision of all facilities, transportation, communications, supplies, equipment maintenance, food, and medical services for incident personnel.



OPERATION SECTION CHIEF

Manages all field personnel; develops and directs tactics to carry out the objectives outlined in the IAP.



FINANCE SECTION CHIEF

Provides accounting, contracting, procurement, time recording, and cost analyses, monitors costs, and processes indemnity claims associated with incident operations.