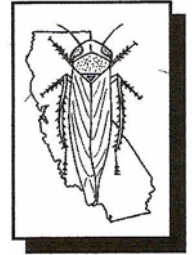


BEET CURLY TOP VIRUS MONTHLY REPORT



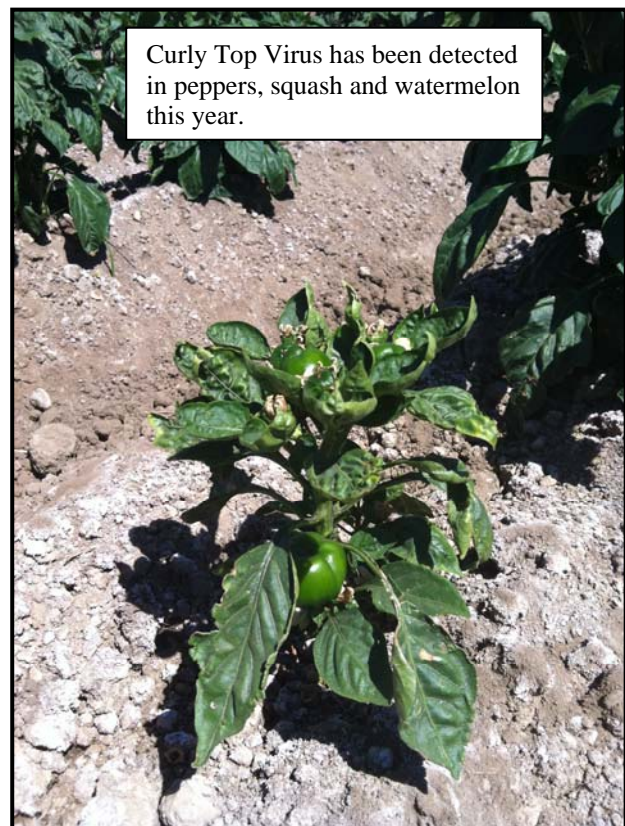
CURLY TOP VIRUS CONTROL PROGRAM

2895 N. Larkin, Suite A
Fresno, CA 93727
PHONE: (559) 294-2031
FAX: (559) 294-2037

Monthly Report for June, 2013

Beet Curly Top Virus Control Program (BCTVCP) personnel continued to survey/ identify roadsides and fallow fields that may be mapped for Russian thistle for the fall treatment campaign. Submission of samples to Dr. Gilbertson continued. The samples of peppers, squash, and watermelon that were submitted came back positive for curly top virus.

The program received notice of Curly Top virus infection in tomatoes in the Tracy area of the San Joaquin Valley. A curly top field meeting with Brenna Aegerter (U.C. Cooperative Extension-San Joaquin County), Chuck Rivera (California Tomato Research Institute) and the Beet Curly Top Virus Control Program (BCTVCP), was held to help PCA's and growers. The meeting covered virus and beet leafhopper identification, habitat and management. Plant and insect samples were available for review. Historically, the beet leafhoppers are not found that far north due to wetter/greener habitat conditions. The meeting was a good way to reach out to PCA's and growers that don't normally have such high curly top virus infection incidence.



The Beet Curly Top Virus Control Program board chairman, Earl Perez, called for a special board meeting. The meeting was held on June 27, 2013. Several growers also attended the meeting. The board members, growers present, and CDFA staff concluded and agreed upon the following items:

- The BCTV program will continue to submit plant and insect samples for virus screening to the University of California, Davis Laboratory.
- The BCTV program will increase ground treatments as well as continue to work on acquiring the Interstate 5/State Route permits with Cal-Trans in order to treat BLH host plants that occur both on the shoulder and median of specific roadways.
- The program does not anticipate a limit on the amount of acres that will be treated for the fall treatment campaign.

- The BCTV program will extend the survey areas to include the Northern San Joaquin Valley, beginning with the 2014 spring survey.

Fresno County

Additional roadside treatments were conducted in Firebaugh and in Three Rocks, on fallow fields with large amounts of *Bassia* and high numbers of beet leafhoppers. 240 acres were treated by ground rig in June. Crews will continue to monitor fallow fields with large numbers of BLH and host plants, should further ground treatment be necessary. Several meetings with Cal-Trans have taken place and the process for obtaining a permit to spray medians along Interstate 5 and other State Routes is in progress.

Kern County and Kings County

Fallow fields and host plant surveys were conducted. Those areas were mapped and mapping will continue as summer progresses and the BCTV program prepares for the fall treatment campaign.

Sacramento Valley

Surveys were conducted in various areas of the Sacramento Valley. Many of the samples submitted were positive for curly top virus. BLH counts were very low with an average of 0-2 adults per 10 sweeps. Visual surveys in tomato fields in the area did not result in detections, although there was curly top present based upon laboratory tests.

Salinas Valley

Surveys were conducted in various areas of the Salinas Valley. BLH counts were on average, 1-3 per 10 sweeps.

Below is the BCTVCP spring treatment campaign summary:

- 38,950 total acres treated aerially (map attached)
- 2,060 total acres treated by ground-rig
- Average mortality rate, post treatment, was 95%
- The program treated all surveyed areas with high BLH counts

2013 Spring Aerial Treatment Campaign Map

