

Virulent Newcastle Disease

Virulent Newcastle disease (VND) is a nearly always fatal respiratory infection in poultry. VND is highly contagious, and birds die within days of being infected. **There is no cure.**



Southern California Quarantine

(Larger map on reverse side)

- All commercial/independent/small poultry businesses must receive prior written permission from CDFA before movements into, within, or out of this region of poultry, poultry products, poultry associated materials.
 - All exhibitions of poultry (including racing pigeons) or non-poultry species are prohibited.
 - No live poultry shall leave any live bird market, pet store, feed store or other retail establishment without prior written permission from CDFA.
 - Shipping, transporting, or receiving live poultry or poultry hatching eggs out of or into the regional quarantine area is prohibited.
 - If you are under a 120-day residential quarantine, or any residential quarantine, all quarantines must remain in place until they are released via your receipt of a letter from CDFA.
- **The quarantine mandates the reporting of sick birds and prohibits owners of all poultry, poultry products, and associated materials, from moving birds** in all of Los Angeles County, and large areas of San Bernardino and Riverside counties.
 - **Poultry species include:** All chickens, turkeys, turkins, pheasants, peafowl, guinea fowl, quail, ducks, geese, swans, gallinules, doves, pigeons, grouse, partridges, francolin, tinamou, ostriches, and other ratites (including but not limited to the rhea, emu, and cassowary), and hatching or embryo-nated eggs.
 - All poultry species (see list, above) must be isolated from all non-poultry species.
 - Movement of any non-poultry species is prohibited if poultry are located on the same property.

To report sick or dead birds, call:

Sick Bird Hotline

(866) 922-2473



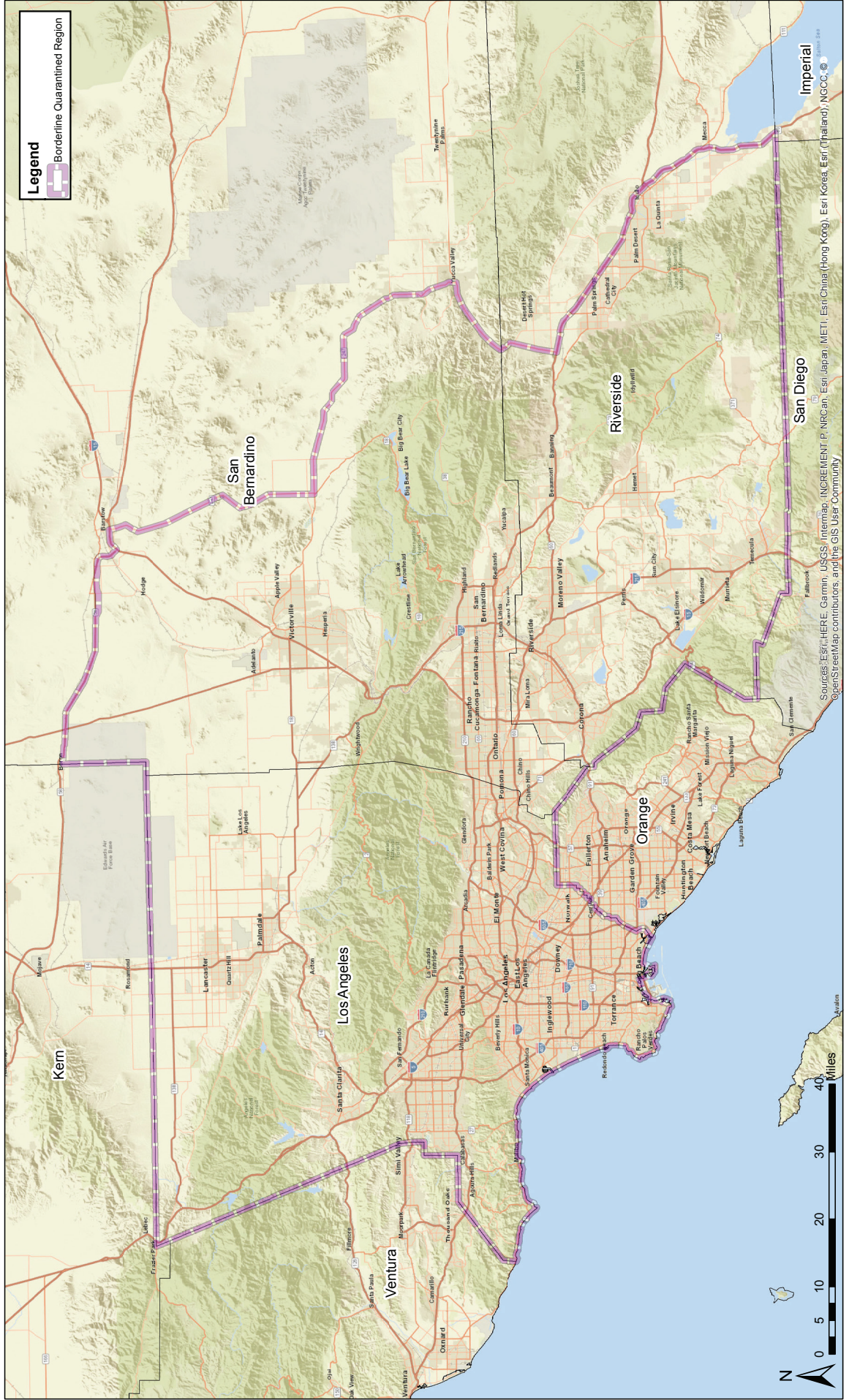
Virulent Newcastle Disease (VND) Southern California Quarantine



VND 2018-19

Quarantined Region

Date: 2/14/2019



Sources: ESRI, HERE, Garmin, USGS, Intermap, INCREMENT P, NRCan, Esri Japan, Esri Korea, Esri (Thailand), NGCC, © OpenStreetMap contributors, and the GIS User Community