

CDFA OUTREACH PROGRAM

- Meat, Poultry and Egg Safety Branch
- 2800 Gateway Oaks Drive
- Sacramento, CA 95833
- Phone (916)900-5004 Fax (916)900-5334

CDFA OUTREACH

- Inedible food material
- CalRecycle regulated material vs CDFA regulated material
- Flow of packing house waste from retail stores
- Point source separation
- Carcass Disposal at Landfills
- CDFA licensed Renderers

INEDIBLE FOOD MATERIALS WHAT ARE THEY?

- ***Packinghouse Waste****



- ***Food Material***



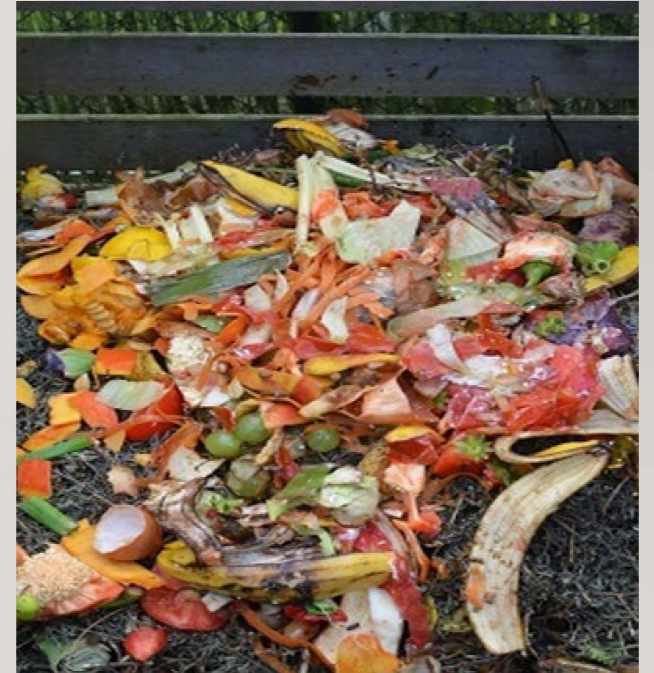
- ***Plate Waste (Post Consumer
Meat and Fat Waste)***



WHAT CALRECYCLE REGULATES

<https://www2.calrecycle.ca.gov/swfacilities>

- *The disposal of “Food Material “ Waste*
- *“Food Material” is Defined as:*
- means a waste material of plant or animal origin that results from the preparation or processing of food for animal or human consumption and that is **separated** from the municipal **solid waste stream**.
- Food material does not include **“packinghouse waste”**
- CalRecycle Anaerobic Digestion permitting requirement
<https://www.calrecycle.ca.gov/SWFacilities/Permitting/FacilityType/InVessel/>



WHAT CDFA MPES REGULATES

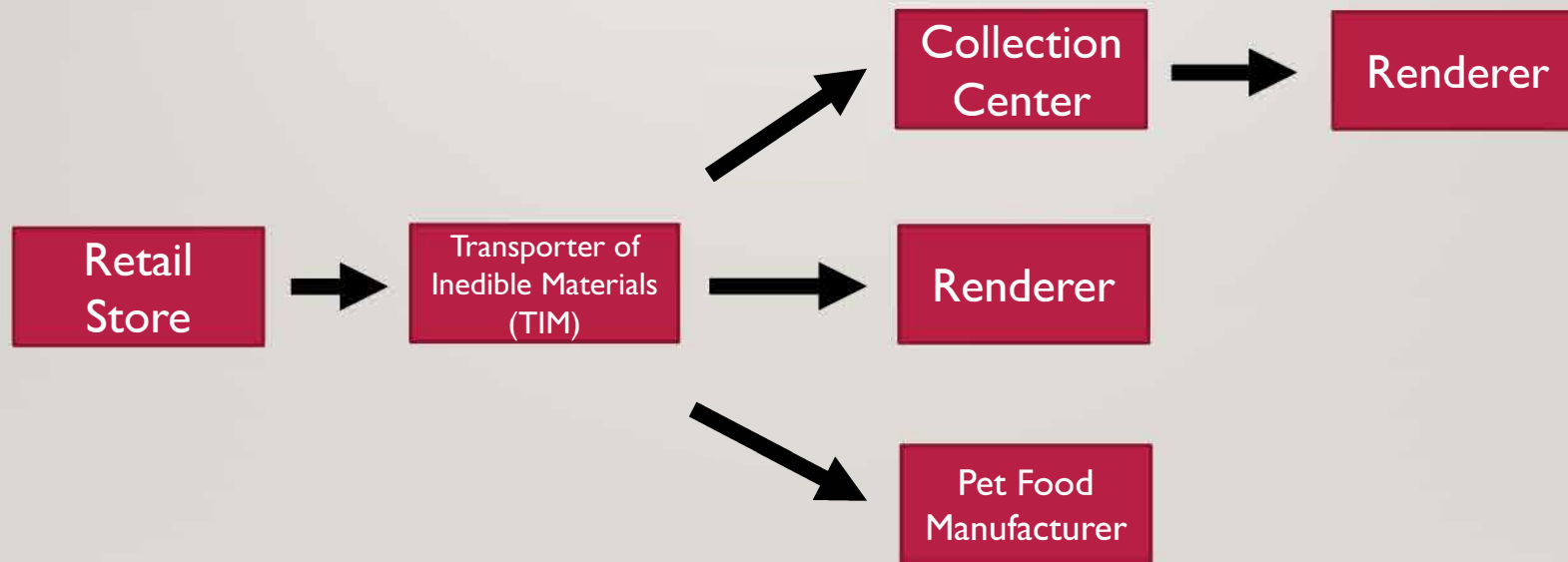
<https://www.cdfa.ca.gov/AHFSS/MPES/>

- *CDFA MPES Regulates and Enforces the disposal of “Packinghouse Waste”*
- *Commonly referred to as “inedible meat scraps” or “inedible material/products”*
- *“Packinghouse Waste” is Defined as:*

Meat scraps, fat, bones, organs, and other animal materials including fish, from slaughterhouses, butcher shops, meat and poultry processing plants, retail stores and other commercial facilities that dispose of animal materials.”



FLOW OF PACKINGHOUSE WASTE FROM RETAIL STORES



- TIMs, Collection Centers, Renderers, and Pet Food Manufacturers must be registered with CDFA

POINT SOURCE SEPARATION OF INEDIBLE PRODUCTS OF ANIMALS

- 3 CCR § 1180.48 Disposal of Parts or Products of Animals Not Intended for Use as Human Food.
- Any parts or products of animals disposed of by inspected establishments, **retail stores**, custom slaughterers and custom processors and which are not intended for use as human food shall be **disposed of through licensed renderers, licensed pet food processors, licensed collection centers** or other method approved by the Director
- Note: Separated product should be free from packaging

SEPARATED INEDIBLE MEAT SCRAPS

- Identified by the wording Inedible or identified by distinct in color

(In Store)

INEDIBLE NOT DENATURED



INEDIBLE NOT DENATURED



SEPARATED INEDIBLE MEAT SCRAPS

Denatured prior to leaving the store

DENATURANT



DENATURANT



Charcoal may also be used as a denaturant

*** If you need information or have questions on denaturants, contact CDFA at 916-900-5004

CARCASS DISPOSAL AT LANDFILLS

- Primary disposal is CDFA licensed renderer or collection center
- Landfill disposal requires CDFA permit
 - CDFA form 79-122
- Landfills are required to verify permit prior to disposal
 - Permits may be issued after the fact
- Permits enable us to track progress with SBI 383

CDFA LICENSED RENDERERS

- An updated list of Renderers and general information maybe found at;
- <http://www.cdfa.ca.gov/AHFSS/MPES/>
- Or contact the Meat, Poultry and Egg Safety Branch
- 2800 Gateway Oaks Drive
- Sacramento, CA 95833
- Phone (916)900-5004 Fax (916)900-5334

CDFA LICENSED RENDERERS

Operation Name	Expiration	License	Address	City	County	ZIP
Baker Commodities	12/31/2019	RG-502	16801 W JENSEN AVE	Kerman	Fresno	93630-
Baker Commodities	12/31/2019	RG-503	4020 Bandini Blvd	Vernon	Los Angeles	90058
California Safe Soil, LLC	12/31/2019	RG-525	4700 Lang Avenue Bay C	North Highlands	Sacramento	95652
Carmel Area Wastewater Distric	12/31/2019	RG-534	26900 State Route 1	Carmel	Monterey	93922
City of Santa Rosa	12/31/2019	RG-531	4300 Llano Road	Santa Rosa	Sonoma	95407
Coast Packing Company	12/31/2019	RG-568	3275 E Vernon Ave	Vernon	Los Angeles	90058
CO-West Commodities1	12/31/2019	RG-577	2586 Shenandoah Way	San Bernardino	San Bernardino	92407
D & D Disposal DBA W.C.R.	12/31/2019	RG-548	4105 Bandini Blvd	Vernon	Los Angeles	90058
Darling Ingredients, Inc.	12/31/2019	RG-543	429 Amador St	San Francisco	San Francisco	94124
Darling International	12/31/2019	RG-524	2626 E 25th St	Los Angeles	Los Angeles	90058
Darling International	12/31/2019	RG-529	11946 CARPENTER RD	Crows Landing	Stanislaus	95313
Darling International INC.	12/31/2019	RG-528	795 W Belgravia Ave	Fresno	Fresno	93706
East Bay Municipal Utility District (EBMUD)	12/31/2019	RG-530	2020 Wake Avenue	Oakland	Alameda	94607
Foster Poultry Farms	12/31/2019	RG-573	843 DAVIS ST	Livingston	Merced	95334
Hanford Commodities, LLC.	12/31/2019	RG-522	10700 Hanford Armona Rd	Hanford	Kings	93230
Harris Ranch Beef Company	12/31/2019	RG-606	16277 S McCall Ave	Selma	Fresno	93662
Imperial Western Products	12/31/2019	RG-576	86-600 AVE 54	Coachella	Riverside	92236-
Imperial Western Products INC.	12/31/2019	RG-605	3766 E CONEJO AVE	Selma	Fresno	93662
North State Rendering Co.	12/31/2019	RG-505	15 Shippee Rd	Oroville	Butte	95965
Rio Valley Biofuels, LLC	12/31/2019	RG-321	1215 N Grove Street	Anaheim	Orange	92806
Sacramento Rendering Co.	12/31/2019	RG-544	11350 Kiefer Blvd	Sacramento	Sacramento	95829

QUESTIONS?